

V&V Reference Report

L2 ASCDS Version : 8.4.3

Observation 55536 - L2 Version 2
Chandra X-Ray Center

L2 Processing Date : Feb 7 2012

Contents

1	Front	2
2	OBI	3
2.1	OBI	3
2.1.1	Images	3
2.1.2	Bias	3
2.1.3	Parameters	4
2.1.4	Events	4
2.2	Compared Parameters	5
2.3	Star Slots	6
2.4	FID Slots	6
A	Summary	7
A.1	Status	7
A.2	Comments	7

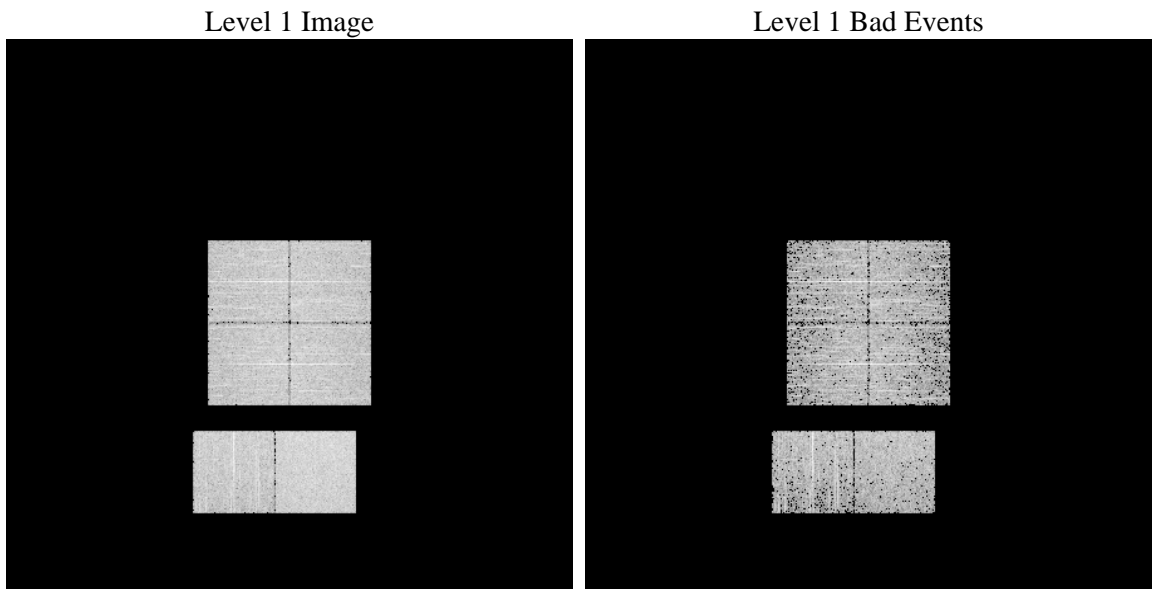
1 Front

seq_num	 	Sequence number
obs_id	55536	Observation id
title	ACIS-012367 diagnostics	Proposal title
observer	CHANDRA engineering request/realtime commanding	Principal investig
object	 	Source name
dtycle	0	
cycle	P	events from which exps? Prim/Second/Both
ra_targ	0.0	Observer's specified target RA [deg]
dec_targ	0.0	Observer's specified target Dec [deg]
ra_nom	51.994470807863	Nominal RA [deg]
dec_nom	-33.028376170394	Nominal Dec [deg]
roll_nom	227.83380738126	Nominal Roll [deg]
revision	2	Processing version of data
ontime	3292.663708508	Sum of GTIs [s]
livetime	3250.9700180268	Livetime [s]
ontime0	3292.6226685047	Sum of GTIs [s]
ontime1	3292.5816285014	Sum of GTIs [s]
ontime2	3292.5405884981	Sum of GTIs [s]
ontime3	3292.7047485113	Sum of GTIs [s]
ontime6	3292.4995484948	Sum of GTIs [s]
ontime7	3292.663708508	Sum of GTIs [s]
l2events	126905	Number of level 2 events

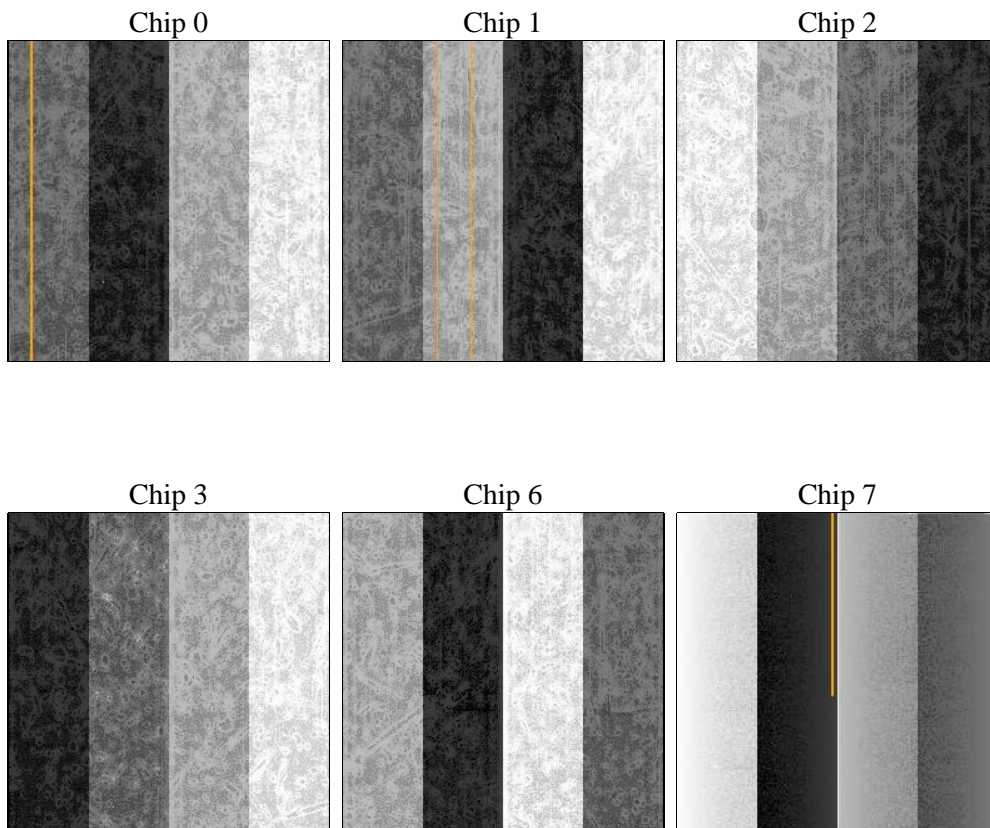
2 OBI

2.1 OBI

2.1.1 Images



2.1.2 Bias



2.1.3 Parameters

obi_num	0	Obi number	sched_exp_time	0.0	[s] Scheduled observation exposure time
ascdsver	8.4.3	Processing system revision	ontime	3292.663708508	Sum of GTIs [s]
caldbver	4.4.7	 	ontime0	3292.6226685047	Sum of GTIs [s]
date	2012-02-07T16:09:26	Date and time of file creation	ontime1	3292.5816285014	Sum of GTIs [s]
revision	2	Processing version of data	ontime2	3292.5405884981	Sum of GTIs [s]
			ontime3	3292.7047485113	Sum of GTIs [s]
			ontime6	3292.4995484948	Sum of GTIs [s]
			ontime7	3292.663708508	Sum of GTIs [s]
			l1events	258912	Number of level 1 events

2.1.4 Events

	ccd 0	ccd 1	ccd 2	ccd 3	ccd 6	ccd 7
level 1 events	41141	40675	40681	40449	42942	53024
rejected events	20633	20121	20579	19996	21778	21600
rejected %	50%	49%	50%	49%	50%	40%

	ccd 0	ccd 1	ccd 2	ccd 3	ccd 6	ccd 7
grade 0 events	10795	10698	10859	11099	11019	5537
	26%	26%	26%	27%	25%	10%
grade 1 events	53	56	74	69	57	38
	0%	0%	0%	0%	0%	0%
grade 2 events	3759	3862	3465	3681	3859	6997
	9%	9%	8%	9%	8%	13%
grade 3 events	1415	1373	1385	1440	1407	2728
	3%	3%	3%	3%	3%	5%
grade 4 events	1378	1352	1405	1387	1380	2819
	3%	3%	3%	3%	3%	5%
grade 5 events	1339	1355	1108	1441	1357	3464
	3%	3%	2%	3%	3%	6%
grade 6 events	3161	3269	2988	2846	3499	13343
	7%	8%	7%	7%	8%	25%
grade 7 events	19241	18710	19397	18486	20364	18098
	46%	45%	47%	45%	47%	34%

2.2 Compared Parameters

Parameter	Planned	Actual	Parameter	Planned	Actual
Instrument	ACIS	ACIS	Obspar format version number	7	7
Detector	ACIS-012367	ACIS-012367	Obspar file type	PREDICTED	ACTUAL
Grating	NONE	NONE	Obspar update status	NONE	UPDATED
Data mode	FAINT	FAINT	Number of optional ACIS chips dropped	0	0
Observation mode	SECONDARY	SECONDARY	On-chip summing requested	N	N
[deg] Pointing RA	0	51.99447080786268	Subarray requested	NONE	NONE
[deg] Pointing Dec	0	-33.02837617039396	Alternating exposures requested	N	N
[deg] Pointing Roll	0.0	227.8338073812582	[s] Primary exposure time	3.2	3.2
[mm] SIM focus pos	-1.429586	-1.428180813131781			
[mm] SIM defocus	0.1037507710433287	0.1051558262725154			
[mm] SIM translation stage pos	250.455976	250.466033080201			
[mm] SIM translation stage offset	0	-0.01005468664627074			
[s] Observation start time (MET)	418553762.84103	418553761.81604			
Observation start date	2011-04-07T08:56:03	2011-04-07T08:56:01			
[s] Observation end time (MET)	418559890.291348	418559889.26636			
Observation end date	2011-04-07T10:38:10	2011-04-07T10:38:09			
Read mode	TIMED	TIMED			

2.3 Star Slots

2.4 FID Slots

A Summary

A.1 Status

V&V Scientist	Beth Sundheim
V&V Date (YYYY-MM-DD)	2012.02.10
V&V Edition	1
V&V Disposition and Status	OK
V&V Charge Time	3.292663708508

A.2 Comments