

# V&V Reference Report

## L2 ASCDS Version : 8.4.4

Observation 57966 - L2 Version 2  
Chandra X-Ray Center

L2 Processing Date : May 9 2012

## Contents

<b>1</b>	<b>Front</b>	<b>2</b>
<b>2</b>	<b>OBI</b>	<b>3</b>
2.1	OBI . . . . .	3
2.1.1	Images . . . . .	3
2.1.2	Bias . . . . .	3
2.1.3	Parameters . . . . .	4
2.1.4	Events . . . . .	4
2.2	Compared Parameters . . . . .	5
2.3	Star Slots . . . . .	6
2.4	FID Slots . . . . .	6
<b>A</b>	<b>Summary</b>	<b>7</b>
A.1	Status . . . . .	7
A.2	Comments . . . . .	7

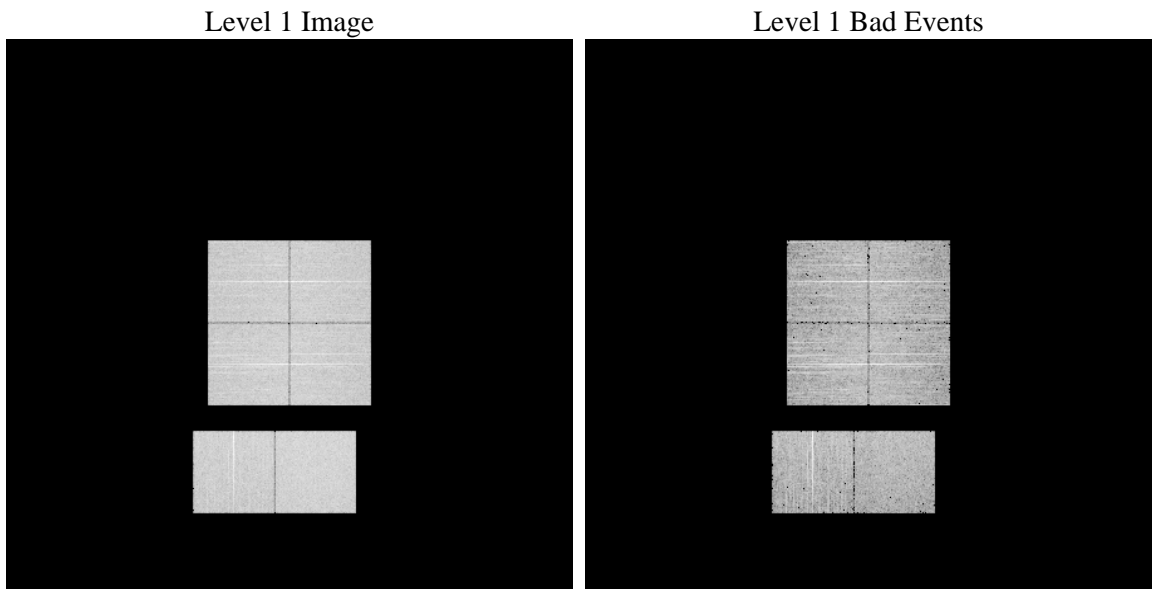
# 1 Front

seq_num	&#160	Sequence number
obs_id	57966	Observation id
title	ACIS-012367 diagnostics	Proposal title
observer	CHANDRA engineering request/realtime commanding	Principal investig
object	&#160	Source name
dtycycle	0	&#160
cycle	P	events from which exps? Prim/Second/Both
ra_targ	0.0	Observer's specified target RA [deg]
dec_targ	0.0	Observer's specified target Dec [deg]
ra_nom	21.013573030113	Nominal RA [deg]
dec_nom	-12.422030294172	Nominal Dec [deg]
roll_nom	277.17465053339	Nominal Roll [deg]
revision	2	Processing version of data
ontime	5048.4308053851	Sum of GTIs [s]
livetime	4984.5045347272	Livetime [s]
ontime0	5048.3897653818	Sum of GTIs [s]
ontime1	5048.3487253785	Sum of GTIs [s]
ontime2	5048.3076853752	Sum of GTIs [s]
ontime3	5048.4718453884	Sum of GTIs [s]
ontime6	5048.2666453719	Sum of GTIs [s]
ontime7	5048.4308053851	Sum of GTIs [s]
l2events	396149	Number of level 2 events

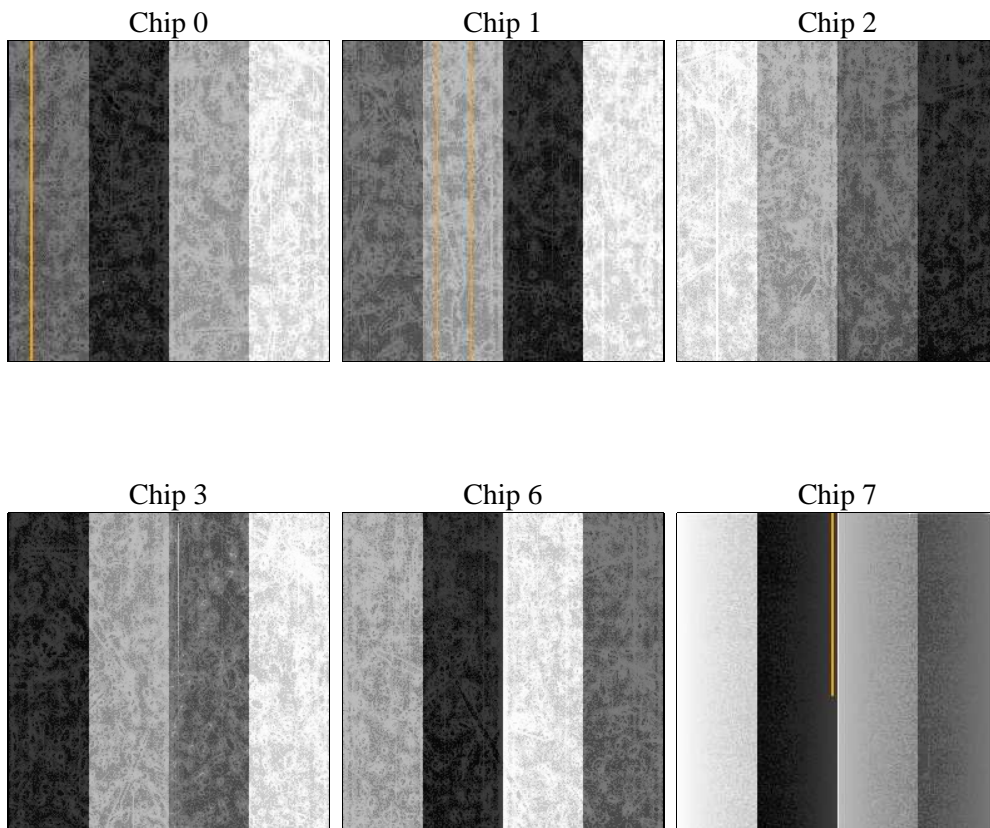
## 2 OBI

### 2.1 OBI

#### 2.1.1 Images



#### 2.1.2 Bias



### 2.1.3 Parameters

obi_num	0	Obi number	sched_exp_time	0.0	[s] Scheduled observation exposure time
ascdsver	8.4.4	Processing system revision	ontime	5048.4308053851	Sum of GTIs [s]
caldbver	4.4.9	&#160	ontime0	5048.3897653818	Sum of GTIs [s]
date	2012-05-09T21:35:21	Date and time of file creation	ontime1	5048.3487253785	Sum of GTIs [s]
revision	2	Processing version of data	ontime2	5048.3076853752	Sum of GTIs [s]
			ontime3	5048.4718453884	Sum of GTIs [s]
			ontime6	5048.2666453719	Sum of GTIs [s]
			ontime7	5048.4308053851	Sum of GTIs [s]
			l1events	677731	Number of level 1 events

### 2.1.4 Events

	ccd 0	ccd 1	ccd 2	ccd 3	ccd 6	ccd 7		ccd 0	ccd 1	ccd 2	ccd 3	ccd 6	ccd 7
level 1 events	107865	107398	112787	109917	113269	126495	grade 0 events	35195	34950	36157	36599	36116	17925
rejected events	42631	41867	46961	43492	44739	39897		32%	32%	32%	33%	31%	14%
rejected %	39%	38%	41%	39%	39%	31%	grade 1 events	255	189	284	258	238	119
								0%	0%	0%	0%	0%	0%
							grade 2 events	11612	11912	11134	11207	12173	19003
								10%	11%	9%	10%	10%	15%
							grade 3 events	4327	4344	4478	4454	4354	8203
								4%	4%	3%	4%	3%	6%
							grade 4 events	4260	4247	4445	4441	4324	8146
								3%	3%	3%	4%	3%	6%
							grade 5 events	2375	2517	2372	2567	2603	6647
								2%	2%	2%	2%	2%	5%
							grade 6 events	9840	10078	9612	9724	11563	33321
								9%	9%	8%	8%	10%	26%
							grade 7 events	40001	39161	44305	40667	41898	33131
								37%	36%	39%	36%	36%	26%

## 2.2 Compared Parameters

Parameter	Planned	Actual	Parameter	Planned	Actual
Instrument	ACIS	ACIS	Obspar format version number	7	7
Detector	ACIS-012367	ACIS-012367	Obspar file type	PREDICTED	ACTUAL
Grating	NONE	NONE	Obspar update status	NONE	UPDATED
Data mode	FAINT	FAINT	On-chip summing requested	N	N
Observation mode	SECONDARY	SECONDARY	Subarray requested	NONE	NONE
[deg] Pointing RA	0	21.01357303011343	Alternating exposures requested	N	N
[deg] Pointing Dec	0	-12.42203029417209	[s] Primary exposure time	3.2	3.2
[deg] Pointing Roll	0.0	277.1746505333917			
[mm] SIM focus pos	-0.782348	-0.6828225247311905			
[mm] SIM defocus	0	0.8505141146731063			
[mm] SIM translation stage pos	-233.592463	250.466033080201			
[mm] SIM translation stage offset	0	-0.01005468664627074			
[s] Observation start time (MET)	319387788.40229	319387787.37729			
Observation start date	2008-02-14T14:49:48	2008-02-14T14:49:47			
[s] Observation end time (MET)	319410957.503415	319410956.47841			
Observation end date	2008-02-14T21:15:58	2008-02-14T21:15:56			
Read mode	TIMED	TIMED			

**2.3 Star Slots**

**2.4 FID Slots**

# A Summary

## A.1 Status

V&V Scientist	Jen Lauer
V&V Date (YYYY-MM-DD)	2012.05.11
V&V Edition	1
V&V Disposition and Status	OK
V&V Charge Time	5.0484308053851

## A.2 Comments