

V&V Reference Report

L2 ASCDS Version : 7.6.7.1

Observation 59526 - L2 Version 002
Chandra X-Ray Center

L2 Processing Date : Mar 16 2006

Contents

1	Front	2
2	OBI	3
2.1	OBI	3
2.1.1	Images	3
2.1.2	Bias	3
2.1.3	Parameters	4
2.1.4	Events	4
2.2	Compared Parameters	5
2.3	Aspect	6
2.4	Star Slots	8
2.5	FID Slots	8
A	Summary	9
A.1	Status	9
A.2	Comments	9

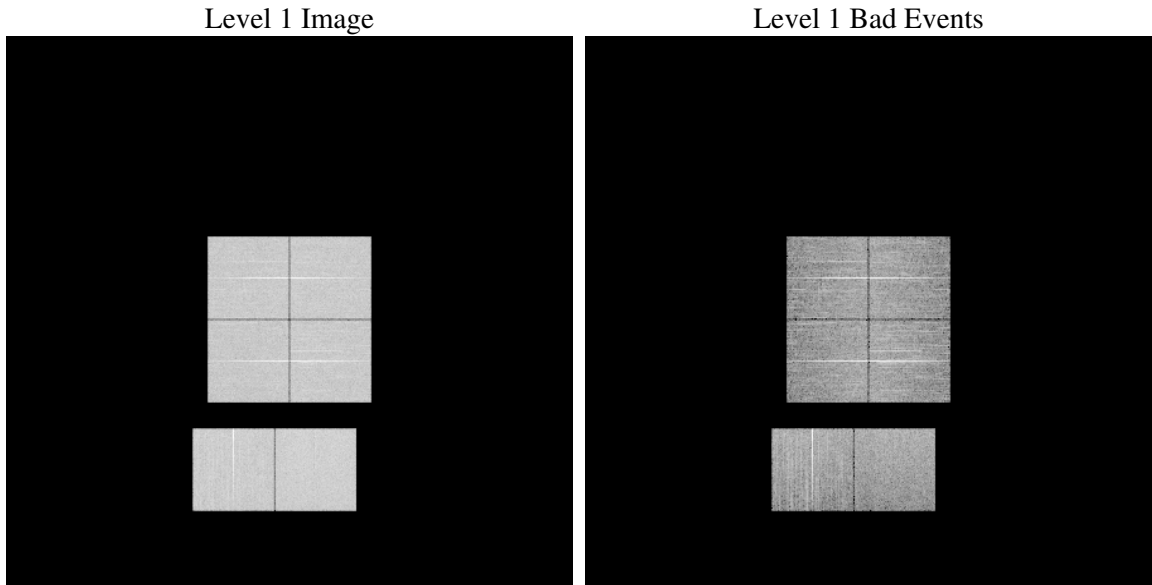
1 Front

seq_num	
obs_id	59526
title	ACIS-012367 diagnostics
observer	CHANDRA engineering request/realtime commanding
object	
dtcycle	0
cycle	P
ra_targ	0.0
dec_targ	0.0
ra_nom	280.50951340843
dec_nom	-7.0287791567503
roll_nom	244.23680610931
revision	2
ontime	8233.5999693274
livetime	8129.3411688371
ontime0	8103.9608970881
ontime1	8188.2262950242
ontime2	7744.2123535573
ontime3	7896.5383282602
ontime6	8233.5999693274
ontime7	8233.5999693274
l2events	1019602

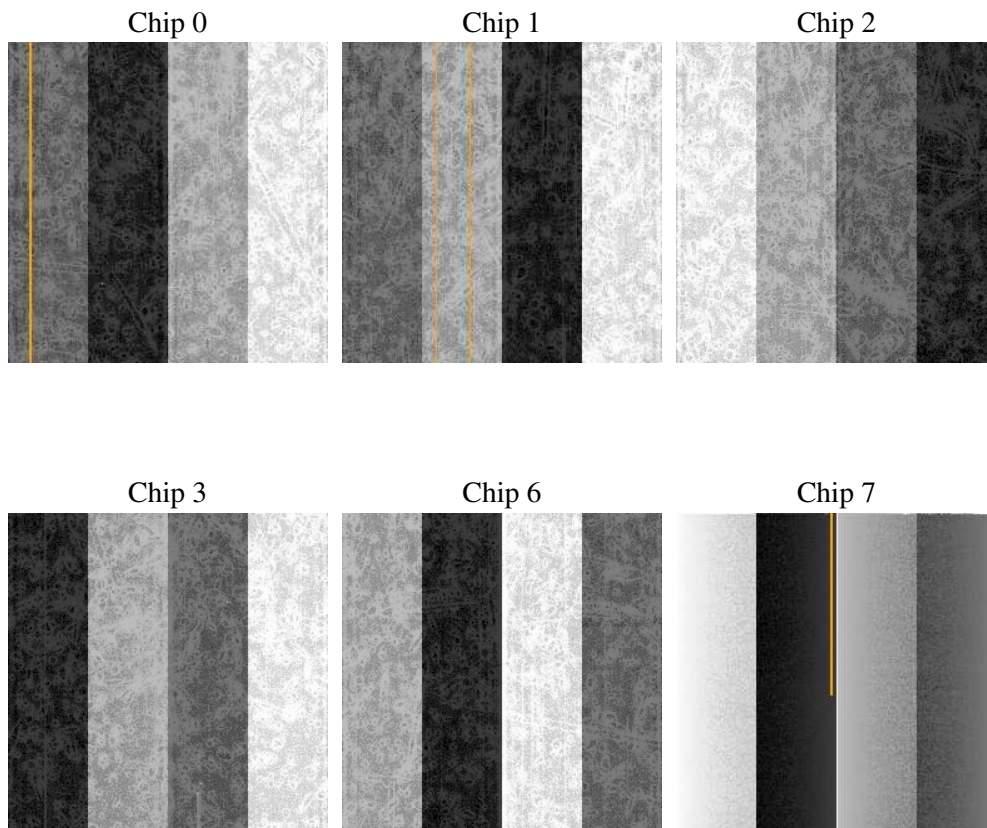
2 OBI

2.1 OBI

2.1.1 Images



2.1.2 Bias



2.1.3 Parameters

obi_num	1
ascdsver	7.6.7.1
caldbver	3.2.1
date	2006-03-16T05:52:46
revision	2

sched_exp_time	0.0
ontime	8280.7751188576
ontime0	8147.8950663507
ontime1	8235.4014445543
ontime2	7788.14652282
ontime3	7940.4724975228
ontime6	8280.7751188576
ontime7	8280.7751188576
l1events	1483084

2.1.4 Events

	ccd 0	ccd 1	ccd 2	ccd 3	ccd 6	ccd 7
level 1 events	240360	243290	231745	242902	257317	267470
rejected events	65165	66307	64382	71090	75904	67326
rejected %	27%	27%	27%	29%	29%	25%

	ccd 0	ccd 1	ccd 2	ccd 3	ccd 6	ccd 7
grade 0 events	80057	71471	79880	82749	60037	29294
	33%	29%	34%	34%	23%	10%
grade 1 events	340	306	355	364	241	100
	0%	0%	0%	0%	0%	0%
grade 2 events	48882	59600	44062	45334	73995	58438
	20%	24%	19%	18%	28%	21%
grade 3 events	9178	7913	8642	8979	6328	15040
	3%	3%	3%	3%	2%	5%
grade 4 events	8887	7931	8667	8890	6458	13402
	3%	3%	3%	3%	2%	5%
grade 5 events	3276	3398	3200	3529	3528	6505
	1%	1%	1%	1%	1%	2%
grade 6 events	29105	31013	27002	26821	35633	85020
	12%	12%	11%	11%	13%	31%
grade 7 events	60635	61658	59937	66236	71097	59671
	25%	25%	25%	27%	27%	22%

2.2 Compared Parameters

Parameter	Planned	Actual	Parameter	Planned	Actual
Instrument	ACIS	ACIS	Obspar format version number	6	6
Detector	ACIS-012367	ACIS-012367	Obspar file type	PREDICTED	ACTUAL
Grating	NONE	NONE	Obspar update status	NONE	UPDATED
Data mode	FAINT	FAINT	On-chip summing requested	N	N
Observation mode	SECONDARY	SECONDARY	Subarray requested	NONE	NONE
Pointing RA	0	280.5095134084261	Alternating exposures requested	N	N
Pointing Dec	0	-7.02877915675034	Primary exposure time	3.2	3.2
Pointing Roll	0.0	244.2368061093113			
SIM focus pos (mm)	-0.782348	-0.6828225247311905			
SIM defocus (mm)	0	0.8505141146731063			
SIM translation stage pos (mm)	-233.592463	250.4635187648994			
SIM translation stage offset (mm)	0	-0.007540371344731511			
Observation start time	239014098.809136	239014097.78412			
Observation start date	2005-07-29T08:48:19	2005-07-29T08:48:17			
Observation end time	239027032.259729	239027031.23471			
Observation end date	2005-07-29T12:23:52	2005-07-29T12:23:51			
Read mode	TIMED	TIMED			

2.3 Aspect

2.4 Star Slots

2.5 FID Slots

A Summary

A.1 Status

V&V Scientist	Jen Lauer
V&V Date (YYYY-MM-DD)	2006.03.16
V&V Edition	1
V&V Disposition and Status	OK
V&V Charge Time	8.23359996

A.2 Comments

The ACIS focal plane temperature is above calibration limits for the entire observation.