

V&V Reference Report

L2 ASCDS Version : 7.6.7

Observation 59776 - L2 Version 002
Chandra X-Ray Center

L2 Processing Date: Feb 25 2006

Contents

1	Front	2
2	OBI	3
2.1	OBI	3
2.1.1	Images	3
2.1.2	Bias	3
2.1.3	Parameters	4
2.1.4	Events	4
2.2	Compared Parameters	5
2.3	Aspect	6
2.4	Star Slots	8
2.5	FID Slots	8
A	Summary	9
A.1	Status	9
A.2	Comments	9

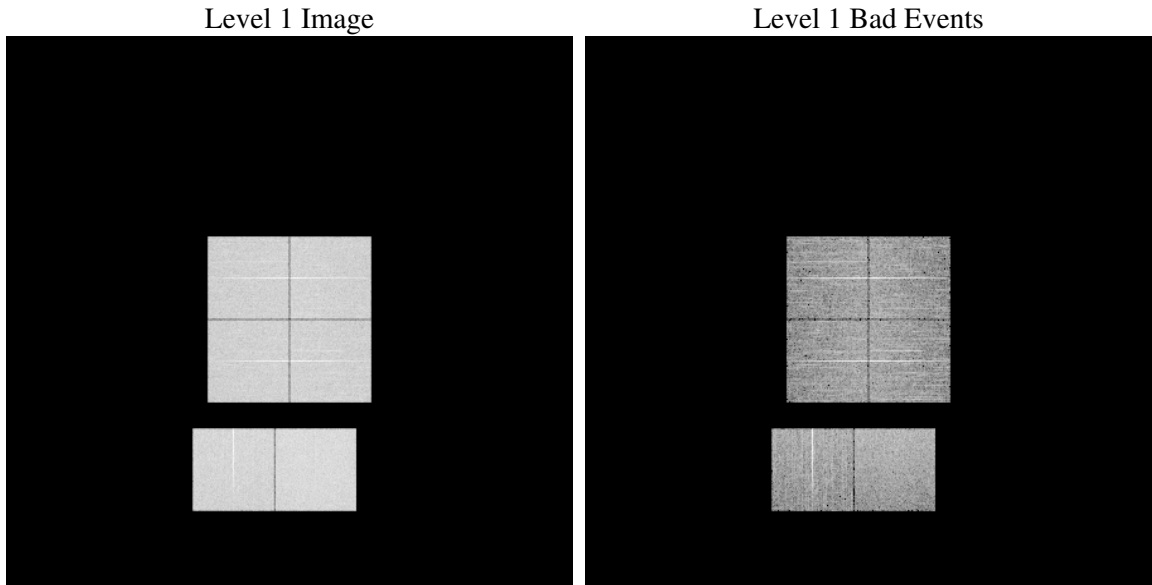
1 Front

seq_num	
obs_id	59776
title	ACIS-012367 diagnostics
observer	CHANDRA engineering request/realtime commanding
object	
dtcycle	0
cycle	P
ra_targ	0.0
dec_targ	0.0
ra_nom	168.96937835224
dec_nom	20.999325143056
roll_nom	148.51420252607
revision	2
ontime	7801.5999709368
livetime	7702.8114145452
ontime0	6881.1644876897
ontime1	7059.4180040658
ontime2	6787.1764900088
ontime3	6781.4760614336
ontime6	7270.0813014507
ontime7	7801.5999709368
l2events	1050780

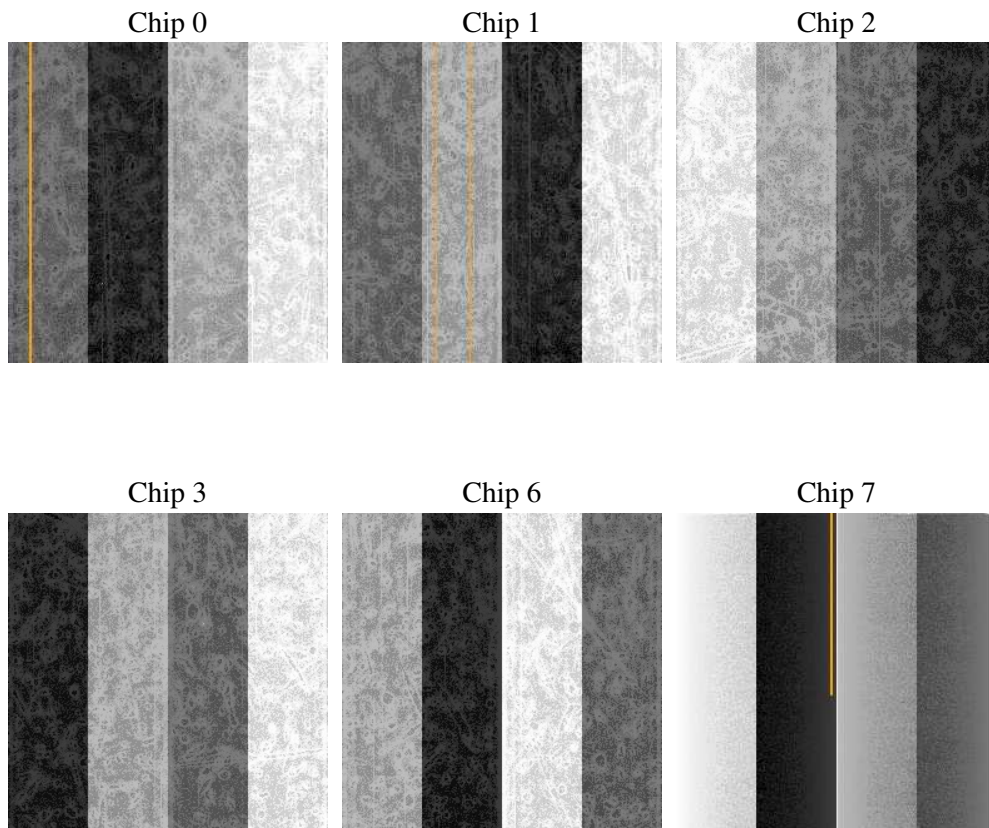
2 OBI

2.1 OBI

2.1.1 Images



2.1.2 Bias



2.1.3 Parameters

obi_num	0
ascdsver	7.6.7
caldbver	3.2.1
date	2006-02-25T18:03:32
revision	2

sched_exp_time	0.0
ontime	7804.3357033432
ontime0	6883.9002200961
ontime1	7062.1537364721
ontime2	6789.9122224152
ontime3	6783.4302613437
ontime6	7272.8170338571
ontime7	7804.3357033432
l1events	1407676

2.1.4 Events

	ccd 0	ccd 1	ccd 2	ccd 3	ccd 6	ccd 7
level 1 events	220006	225399	221809	224164	246486	269812
rejected events	46901	47383	47942	50518	53309	56994
rejected %	21%	21%	21%	22%	21%	21%

	ccd 0	ccd 1	ccd 2	ccd 3	ccd 6	ccd 7
grade 0 events	94918	97473	97736	97270	104734	36120
	43%	43%	44%	43%	42%	13%
grade 1 events	578	475	600	578	590	107
	0%	0%	0%	0%	0%	0%
grade 2 events	30471	31709	29530	29761	33501	64627
	13%	14%	13%	13%	13%	23%
grade 3 events	11157	11336	11398	11491	11896	15089
	5%	5%	5%	5%	4%	5%
grade 4 events	11260	11408	11186	11371	12167	14866
	5%	5%	5%	5%	4%	5%
grade 5 events	2947	3183	2867	3160	3532	6690
	1%	1%	1%	1%	1%	2%
grade 6 events	25367	26176	24111	23823	30966	82201
	11%	11%	10%	10%	12%	30%
grade 7 events	43308	43639	44381	46710	49100	50112
	19%	19%	20%	20%	19%	18%

2.2 Compared Parameters

Parameter	Planned	Actual	Parameter	Planned	Actual
Instrument	ACIS	ACIS	Obspar format version number	6	6
Detector	ACIS-012367	ACIS-012367	Obspar file type	PREDICTED	ACTUAL
Grating	NONE	NONE	Obspar update status	NONE	UPDATED
Data mode	FAINT	FAINT	On-chip summing requested	N	N
Observation mode	SECONDARY	SECONDARY	Subarray requested	NONE	NONE
Pointing RA	0	168.9693783522422	Alternating exposures requested	N	N
Pointing Dec	0	20.99932514305645	Primary exposure time	3.2	3.2
Pointing Roll	0.0	148.5142025260654			
SIM focus pos (mm)	-0.782348	-0.6828225247311905			
SIM defocus (mm)	0	0.8505141146731063			
SIM translation stage pos (mm)	-233.592463	250.466033080201			
SIM translation stage offset (mm)	0	-0.01005468664627074			
Observation start time	225943169.063722	225943168.03873			
Observation start date	2005-02-28T01:59:29	2005-02-28T01:59:28			
Observation end time	225956858.964342	225956857.93935			
Observation end date	2005-02-28T05:47:39	2005-02-28T05:47:37			
Read mode	TIMED	TIMED			

2.3 Aspect

2.4 Star Slots

2.5 FID Slots

A Summary

A.1 Status

V&V Scientist	Doug Morgan
V&V Date (YYYY-MM-DD)	2006.02.26
V&V Edition	1
V&V Disposition and Status	OK
V&V Charge Time	7.80159997

A.2 Comments