

# V&V Reference Report

## L2 ASCDS Version : 7.6.7.2

Observation 60206 - L2 Version 001  
Chandra X-Ray Center

L2 Processing Date : May 1 2006

## Contents

<b>1</b>	<b>Front</b>	<b>2</b>
<b>2</b>	<b>OBI</b>	<b>3</b>
2.1	OBI . . . . .	3
2.1.1	Images . . . . .	3
2.1.2	Bias . . . . .	3
2.1.3	Parameters . . . . .	4
2.1.4	Events . . . . .	4
2.2	Compared Parameters . . . . .	5
2.3	Aspect . . . . .	6
2.4	Star Slots . . . . .	8
2.5	FID Slots . . . . .	8
<b>A</b>	<b>Summary</b>	<b>9</b>
A.1	Status . . . . .	9
A.2	Comments . . . . .	9

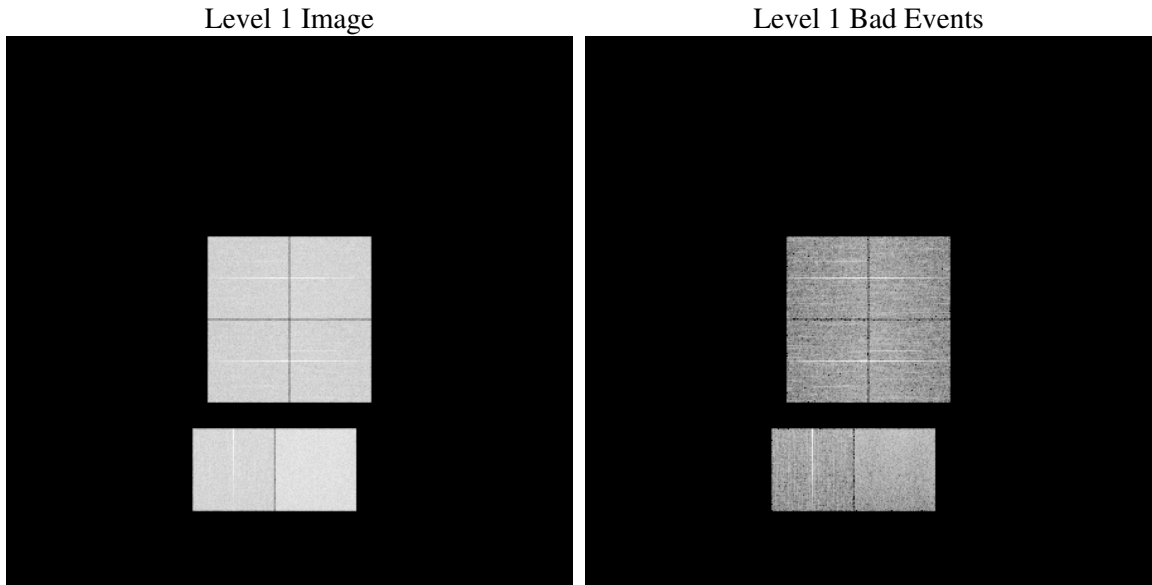
# 1 Front

seq_num	&#160
obs_id	60206
title	ACIS-012367 diagnostics
observer	CHANDRA engineering request/realtime commanding
object	&#160
dtcycle	0
cycle	P
ra_targ	0.0
dec_targ	0.0
ra_nom	250.98224961856
dec_nom	-13.022902531543
roll_nom	199.97601520036
revision	2
ontime	8191.9999694824
livetime	8088.2679332387
ontime0	6121.020267576
ontime1	6406.2253736556
ontime2	5903.8740539551
ontime3	6030.2722824812
ontime6	6477.5267400146
ontime7	8191.9999694824
l2events	1139396

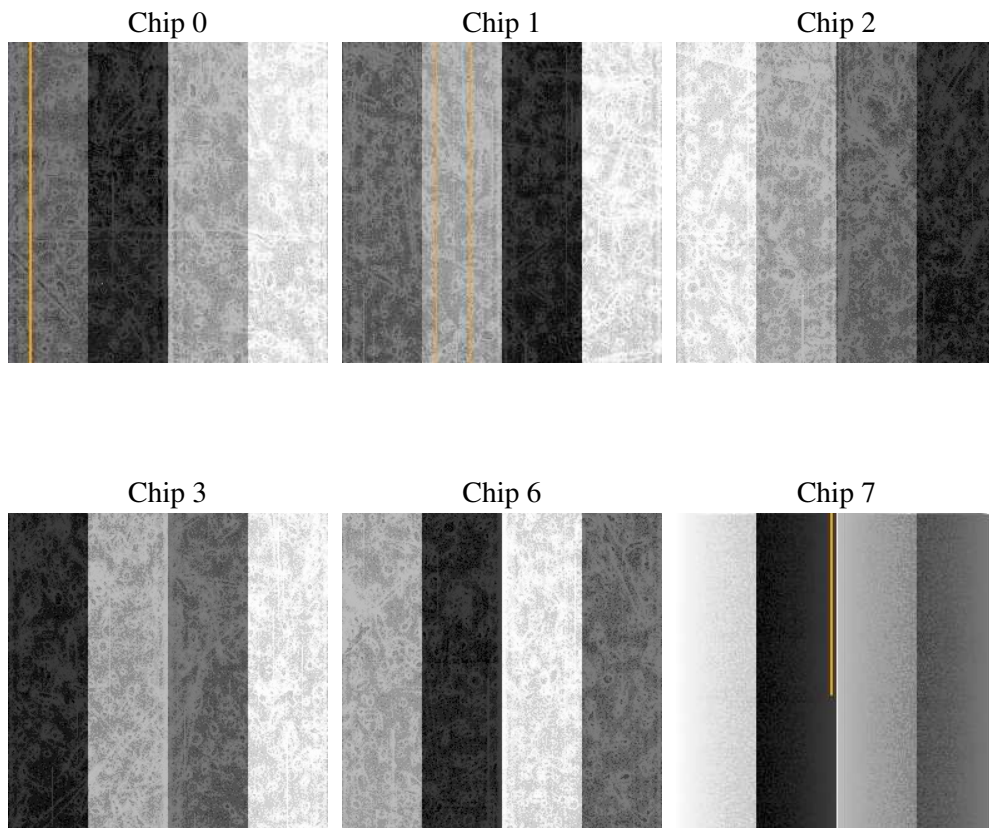
## 2 OBI

### 2.1 OBI

#### 2.1.1 Images



#### 2.1.2 Bias



### 2.1.3 Parameters

obi_num	0
ascdsver	7.6.7.2
caldbver	3.2.1
date	2006-05-01T21:12:05
revision	2

sched_exp_time	0.0
ontime	8280.7640660107
ontime0	6187.0975422263
ontime1	6472.3026682436
ontime2	5960.228397876
ontime3	6099.590557307
ontime6	6546.844984889
ontime7	8280.7640660107
l1events	1500478

### 2.1.4 Events

	ccd 0	ccd 1	ccd 2	ccd 3	ccd 6	ccd 7
level 1 events	229256	238796	224414	230853	254032	323127
rejected events	45521	46577	46848	48249	52264	65630
rejected %	19%	19%	20%	20%	20%	20%

	ccd 0	ccd 1	ccd 2	ccd 3	ccd 6	ccd 7
grade 0 events	102195	105945	101400	104508	110036	42120
	44%	44%	45%	45%	43%	13%
grade 1 events	541	517	598	663	540	105
	0%	0%	0%	0%	0%	0%
grade 2 events	32482	35332	29280	30861	36065	80924
	14%	14%	13%	13%	14%	25%
grade 3 events	11990	12385	11579	11822	12316	17588
	5%	5%	5%	5%	4%	5%
grade 4 events	11923	11911	11819	11877	12481	17448
	5%	4%	5%	5%	4%	5%
grade 5 events	2755	2815	2579	2892	3100	7265
	1%	1%	1%	1%	1%	2%
grade 6 events	27080	28600	25245	25613	33015	102139
	11%	11%	11%	11%	12%	31%
grade 7 events	40290	41291	41914	42617	46479	55538
	17%	17%	18%	18%	18%	17%

## 2.2 Compared Parameters

Parameter	Planned	Actual	Parameter	Planned	Actual
Instrument	ACIS	ACIS	Obspar format version number	6	6
Detector	ACIS-012367	ACIS-012367	Obspar file type	PREDICTED	ACTUAL
Grating	NONE	NONE	Obspar update status	NONE	UPDATED
Data mode	FAINT	FAINT	On-chip summing requested	N	N
Observation mode	SECONDARY	SECONDARY	Subarray requested	NONE	NONE
Pointing RA	0	250.9822496185616	Alternating exposures requested	N	N
Pointing Dec	0	-13.02290253154306	Primary exposure time	0.000000	3.2
Pointing Roll	0.0	199.9760152003589			
SIM focus pos (mm)	-0.782348	-0.7809083437167272			
SIM defocus (mm)	0	0.7524282956875696			
SIM translation stage pos (mm)	-233.592463	250.466033080201			
SIM translation stage offset (mm)	0	-0.01005468664627074			
Observation start time	202904556.682464	202904555.65747			
Observation start date	2004-06-06T10:22:37	2004-06-06T10:22:35			
Observation end time	202928070.183504	202928069.15851			
Observation end date	2004-06-06T16:54:30	2004-06-06T16:54:29			
Read mode	TIMED	TIMED			

## 2.3 Aspect



**2.4 Star Slots**

**2.5 FID Slots**

# A Summary

## A.1 Status

V&V Scientist	Jen Lauer
V&V Date (YYYY-MM-DD)	2006.05.02
V&V Edition	1
V&V Disposition and Status	OK
V&V Charge Time	8.19199996

## A.2 Comments

The ACIS focal plane temperature was above calibration limits for the entire observation.