

# V&V Reference Report

## L2 ASCDS Version : 8.4.5

Observation 60206 - L2 Version 3  
Chandra X-Ray Center

L2 Processing Date : Dec 3 2012

## Contents

<b>1</b>	<b>Front</b>	<b>2</b>
<b>2</b>	<b>OBI</b>	<b>3</b>
2.1	OBI . . . . .	3
2.1.1	Images . . . . .	3
2.1.2	Bias . . . . .	3
2.1.3	Parameters . . . . .	4
2.1.4	Events . . . . .	4
2.2	Compared Parameters . . . . .	5
2.3	Star Slots . . . . .	6
2.4	FID Slots . . . . .	6
<b>A</b>	<b>Summary</b>	<b>7</b>
A.1	Status . . . . .	7
A.2	Comments . . . . .	7

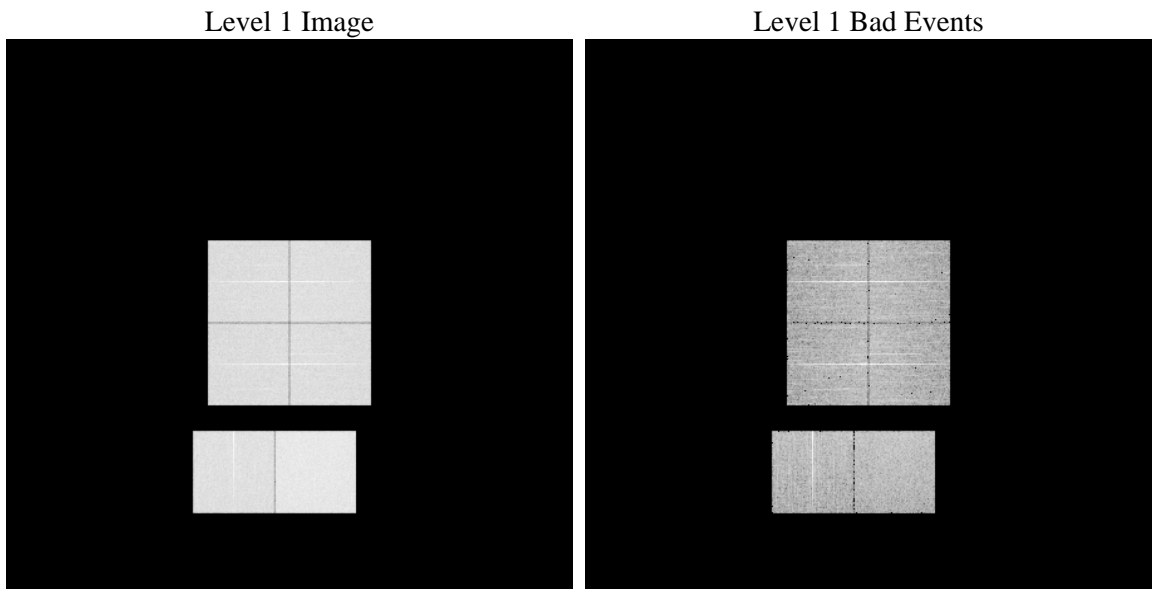
# 1 Front

seq_num	&#160	Sequence number
obs_id	60206	Observation id
title	ACIS-012367 diagnostics	Proposal title
observer	CHANDRA engineering request/realtime commanding	Principal investig
object	&#160	Source name
dtycle	0	&#160
cycle	P	events from which exps? Prim/Second/Both
ra_targ	0.0	Observer's specified target RA [deg]
dec_targ	0.0	Observer's specified target Dec [deg]
ra_nom	250.9822228114	Nominal RA [deg]
dec_nom	-13.022911990486	Nominal Dec [deg]
roll_nom	199.97600916716	Nominal Roll [deg]
revision	3	Processing version of data
ontime	8190.9895598888	Sum of GTIs [s]
livetime	8087.2703180597	Livetime [s]
ontime0	6119.9688179791	Sum of GTIs [s]
ontime1	6405.1328840554	Sum of GTIs [s]
ontime2	5902.7405243516	Sum of GTIs [s]
ontime3	6029.3029128909	Sum of GTIs [s]
ontime6	6476.3521704376	Sum of GTIs [s]
ontime7	8190.9895598888	Sum of GTIs [s]
l2events	1150977	Number of level 2 events

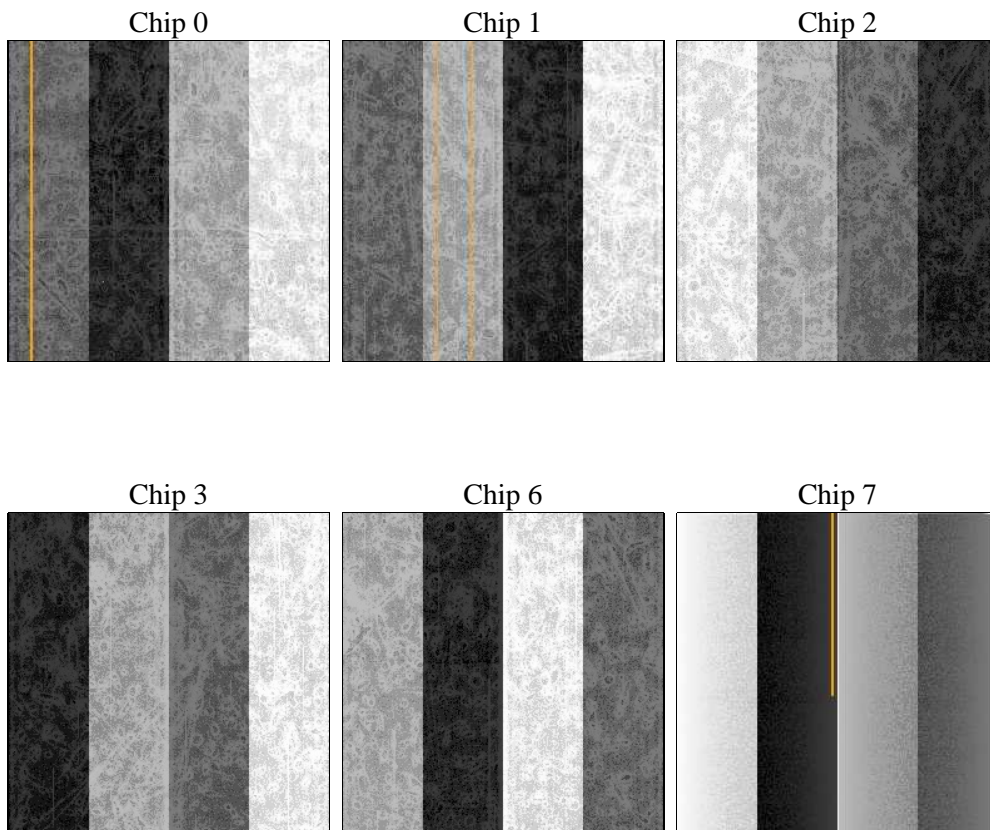
## 2 OBI

### 2.1 OBI

#### 2.1.1 Images



#### 2.1.2 Bias



### 2.1.3 Parameters

obi_num	0	Obi number	sched_exp_time	0.0	[s] Scheduled observation exposure time
ascdsver	8.4.5	Processing system revision	ontime	8190.9895598888	Sum of GTIs [s]
caldbver	4.5.2	&#160	ontime0	6119.9688179791	Sum of GTIs [s]
date	2012-12-03T04:44:41	Date and time of file creation	ontime1	6405.1328840554	Sum of GTIs [s]
revision	3	Processing version of data	ontime2	5902.7405243516	Sum of GTIs [s]
			ontime3	6029.3029128909	Sum of GTIs [s]
			ontime6	6476.3521704376	Sum of GTIs [s]
			ontime7	8190.9895598888	Sum of GTIs [s]
			l1events	1500478	Number of level 1 events

### 2.1.4 Events

	ccd 0	ccd 1	ccd 2	ccd 3	ccd 6	ccd 7		ccd 0	ccd 1	ccd 2	ccd 3	ccd 6	ccd 7
level 1 events	229256	238796	224414	230853	254032	323127	grade 0 events	102393	106256	101577	104668	110711	65303
rejected events	45574	46616	46932	48300	52271	53594		44%	44%	45%	45%	43%	20%
rejected %	19%	19%	20%	20%	20%	16%	grade 1 events	555	522	622	687	551	190
								0%	0%	0%	0%	0%	0%
							grade 2 events	32282	35022	29101	30698	35389	59658
								14%	14%	12%	13%	13%	18%
							grade 3 events	12051	12445	11640	11887	12443	26733
								5%	5%	5%	5%	4%	8%
							grade 4 events	11982	11984	11883	11945	12587	26679
								5%	5%	5%	5%	4%	8%
							grade 5 events	2757	2827	2590	2904	3120	8993
								1%	1%	1%	1%	1%	2%
							grade 6 events	26995	28517	25142	25518	32869	94096
								11%	11%	11%	11%	12%	29%
							grade 7 events	40241	41223	41859	42546	46362	41475
								17%	17%	18%	18%	18%	12%

## 2.2 Compared Parameters

Parameter	Planned	Actual	Parameter	Planned	Actual
Instrument	ACIS	ACIS	Obspar format version number	7	7
Detector	ACIS-012367	ACIS-012367	Obspar file type	PREDICTED	ACTUAL
Grating	NONE	NONE	Obspar update status	NONE	UPDATED
Data mode	FAINT	FAINT	On-chip summing requested	N	N
Observation mode	SECONDARY	SECONDARY	Subarray requested	NONE	NONE
[deg] Pointing RA	0	250.9822228114004	Alternating exposures requested	N	N
[deg] Pointing Dec	0	-13.02291199048648	[s] Primary exposure time	0.000000	3.2
[deg] Pointing Roll	0.0	199.9760091671582			
[mm] SIM focus pos	-0.782348	-0.7809083437167272			
[mm] SIM defocus	0	0.7524282956875696			
[mm] SIM translation stage pos	-233.592463	250.466033080201			
[mm] SIM translation stage offset	0	-0.01005468664627074			
[s] Observation start time (MET)	202904556.682464	202904555.65747			
Observation start date	2004-06-06T10:22:37	2004-06-06T10:22:35			
[s] Observation end time (MET)	202928070.183504	202928069.15851			
Observation end date	2004-06-06T16:54:30	2004-06-06T16:54:29			
Read mode	TIMED	TIMED			

**2.3 Star Slots**

**2.4 FID Slots**

# A Summary

## A.1 Status

V&V Scientist	Beth Sundheim
V&V Date (YYYY-MM-DD)	2012.12.17
V&V Edition	1
V&V Disposition and Status	OK
V&V Charge Time	8.1909895598888

## A.2 Comments