

V&V Reference Report

L2 ASCDS Version : 8.4.5

Observation 60806 - L2 Version 3
Chandra X-Ray Center

L2 Processing Date : Oct 24 2012

Contents

1	Front	2
2	OBI	3
2.1	OBI	3
2.1.1	Images	3
2.1.2	Bias	3
2.1.3	Parameters	4
2.1.4	Events	4
2.2	Compared Parameters	5
2.3	Star Slots	6
2.4	FID Slots	6
A	Summary	7
A.1	Status	7
A.2	Comments	7

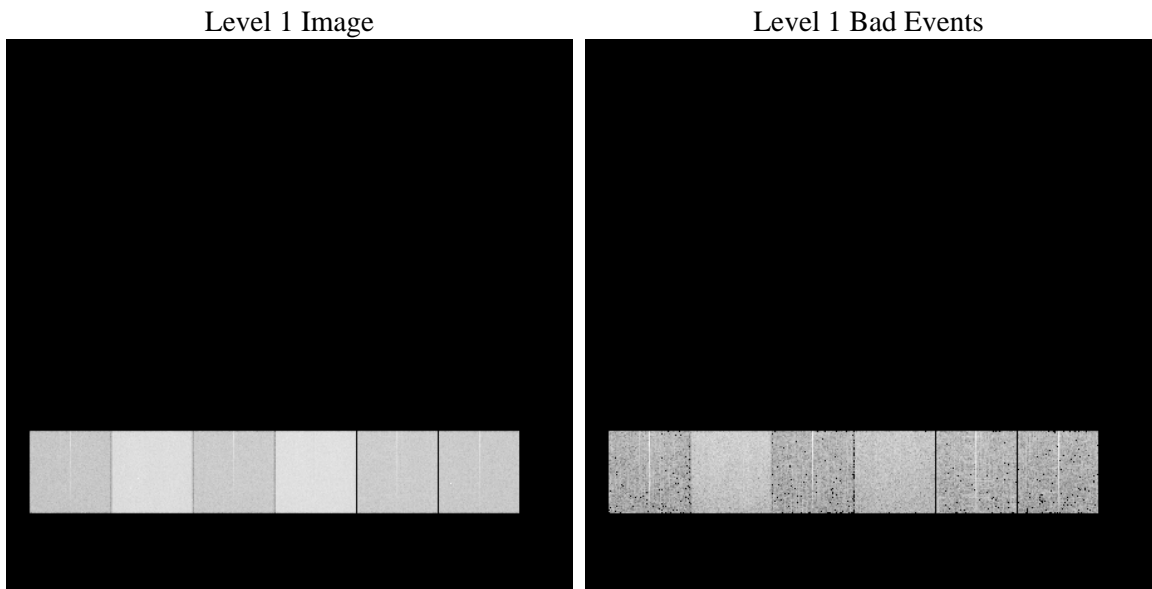
1 Front

seq_num	 	Sequence number
obs_id	60806	Observation id
title	ACIS-456789 diagnostics	Proposal title
observer	CHANDRA engineering request/realtime commanding	Principal investig
object	 	Source name
dtycle	0	
cycle	P	events from which exps? Prim/Second/Both
ra_targ	0.0	Observer's specified target RA [deg]
dec_targ	0.0	Observer's specified target Dec [deg]
ra_nom	159.7239107151	Nominal RA [deg]
dec_nom	-8.2160353359	Nominal Dec [deg]
roll_nom	292.96610495696	Nominal Roll [deg]
revision	3	Processing version of data
ontime	8463.8676692843	Sum of GTIs [s]
livetime	8356.6930805266	Livetime [s]
ontime4	3628.1989155412	Sum of GTIs [s]
ontime5	8463.826629281	Sum of GTIs [s]
ontime6	4010.6794570982	Sum of GTIs [s]
ontime7	8463.8676692843	Sum of GTIs [s]
ontime8	4068.9354990423	Sum of GTIs [s]
ontime9	3945.9826637506	Sum of GTIs [s]
l2events	1273839	Number of level 2 events

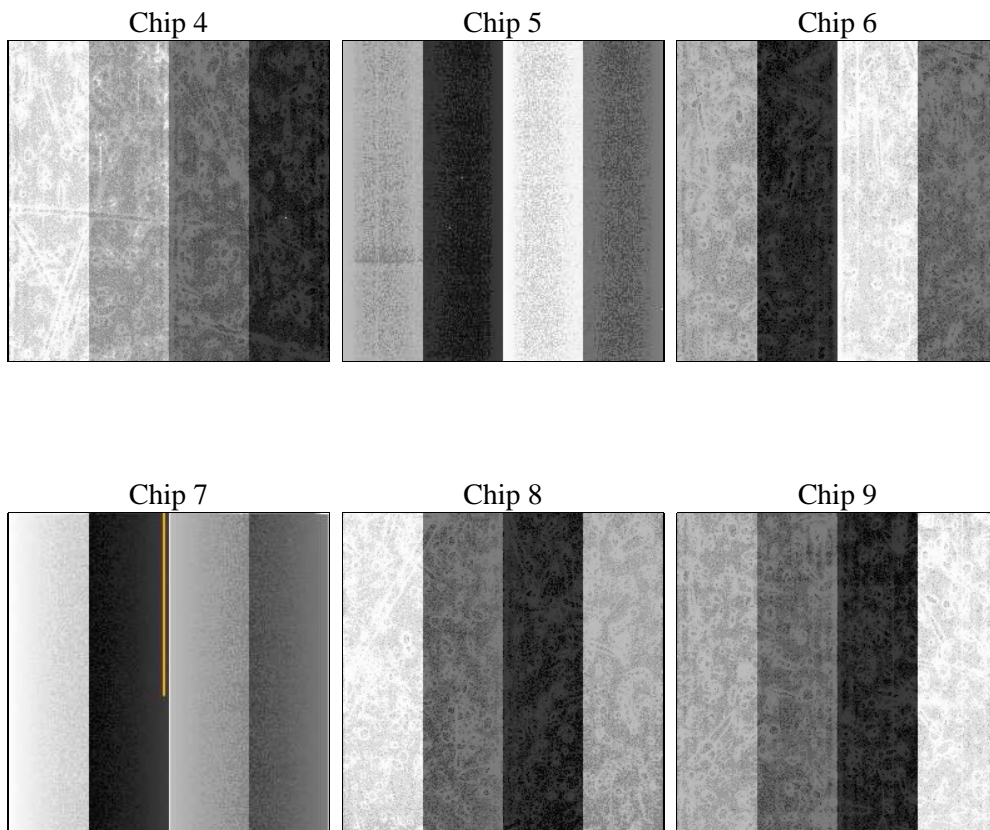
2 OBI

2.1 OBI

2.1.1 Images



2.1.2 Bias



2.1.3 Parameters

obi_num	0	Obi number	sched_exp_time	0.0	[s] Scheduled observation exposure time
ascdsver	8.4.5	Processing system revision	ontime	8463.8676692843	Sum of GTIs [s]
caldbver	4.5.2	 	ontime4	3628.1989155412	Sum of GTIs [s]
date	2012-10-24T21:50:09	Date and time of file creation	ontime5	8463.826629281	Sum of GTIs [s]
revision	3	Processing version of data	ontime6	4010.6794570982	Sum of GTIs [s]
			ontime7	8463.8676692843	Sum of GTIs [s]
			ontime8	4068.9354990423	Sum of GTIs [s]
			ontime9	3945.9826637506	Sum of GTIs [s]
			l1events	1542057	Number of level 1 events

2.1.4 Events

	ccd 4	ccd 5	ccd 6	ccd 7	ccd 8	ccd 9		ccd 4	ccd 5	ccd 6	ccd 7	ccd 8	ccd 9
level 1 events	170090	370991	198273	407849	206150	188704	grade 0 events	83676	71698	93666	90682	96527	90149
rejected events	26698	55300	26717	43678	30777	25972		49%	19%	47%	22%	46%	47%
rejected %	15%	14%	13%	10%	14%	13%	grade 1 events	558	222	423	240	490	495
								0%	0%	0%	0%	0%	0%
							grade 2 events	22834	115132	29600	80334	30497	27906
								13%	31%	14%	19%	14%	14%
							grade 3 events	9388	19411	10706	36515	11480	10443
								5%	5%	5%	8%	5%	5%
							grade 4 events	9460	19277	10594	36880	11428	10246
								5%	5%	5%	9%	5%	5%
							grade 5 events	1681	9598	1913	8351	2255	1889
								0%	2%	0%	2%	1%	1%
							grade 6 events	18158	90302	27144	119920	25568	23988
								10%	24%	13%	29%	12%	12%
							grade 7 events	24335	45351	24227	34927	27905	23588
								14%	12%	12%	8%	13%	12%

2.2 Compared Parameters

Parameter	Planned	Actual	Parameter	Planned	Actual
Instrument	ACIS	ACIS	Obspar format version number	7	7
Detector	ACIS-456789	ACIS-456789	Obspar file type	PREDICTED	ACTUAL
Grating	NONE	NONE	Obspar update status	NONE	UPDATED
Data mode	FAINT	FAINT	On-chip summing requested	N	N
Observation mode	SECONDARY	SECONDARY	Subarray requested	NONE	NONE
[deg] Pointing RA	0	159.7239107151048	Alternating exposures requested	N	N
[deg] Pointing Dec	0	-8.216035335900022	[s] Primary exposure time	0.000000	3.2
[deg] Pointing Roll	0.0	292.9661049569596			
[mm] SIM focus pos	-0.684267	-0.6828225247311905			
[mm] SIM defocus	0	0.8505141146731063			
[mm] SIM translation stage pos	-190.132523	250.466033080201			
[mm] SIM translation stage offset	0	-0.01005468664627074			
[s] Observation start time (MET)	164516794.175347	164516793.15062			
Observation start date	2003-03-20T03:06:34	2003-03-20T03:06:33			
[s] Observation end time (MET)	164542316.676425	164542315.65169			
Observation end date	2003-03-20T10:11:57	2003-03-20T10:11:55			
Read mode	TIMED	TIMED			

2.3 Star Slots

2.4 FID Slots

A Summary

A.1 Status

V&V Scientist	Beth Sundheim
V&V Date (YYYY-MM-DD)	2012.12.03
V&V Edition	1
V&V Disposition and Status	OK
V&V Charge Time	8.4638676692843

A.2 Comments