

V&V Reference Report

L2 ASCDS Version : 7.6.9

Observation 61026 - L2 Version 001
Chandra X-Ray Center

L2 Processing Date : Oct 4 2006

Contents

1	Front	2
2	OBI	3
2.1	OBI	3
2.1.1	Images	3
2.1.2	Bias	3
2.1.3	Parameters	4
2.1.4	Events	4
2.2	Compared Parameters	5
2.3	Aspect	6
2.4	Star Slots	8
2.5	FID Slots	8
A	Summary	9
A.1	Status	9
A.2	Comments	9

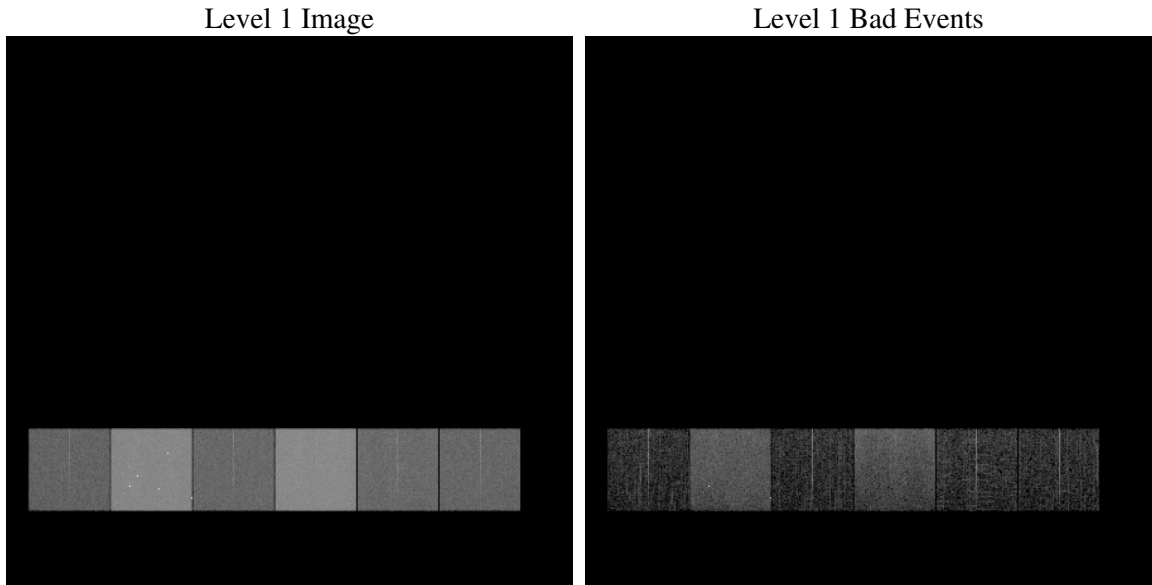
1 Front

seq_num	
obs_id	61026
title	ACIS-456789 diagnostics
observer	CHANDRA engineering request/realtime commanding
object	
dtcycle	0
cycle	P
ra_targ	0.0
dec_targ	0.0
ra_nom	348.10019113657
dec_nom	5.4713869266808
roll_nom	237.53641358794
revision	2
ontime	8169.1134929955
livetime	8065.6712590976
ontime4	2902.7518824041
ontime5	8460.7999684811
ontime6	3178.1982052326
ontime7	8169.1134929955
ontime8	3249.5833246112
ontime9	3080.8443240225
l2events	1272712

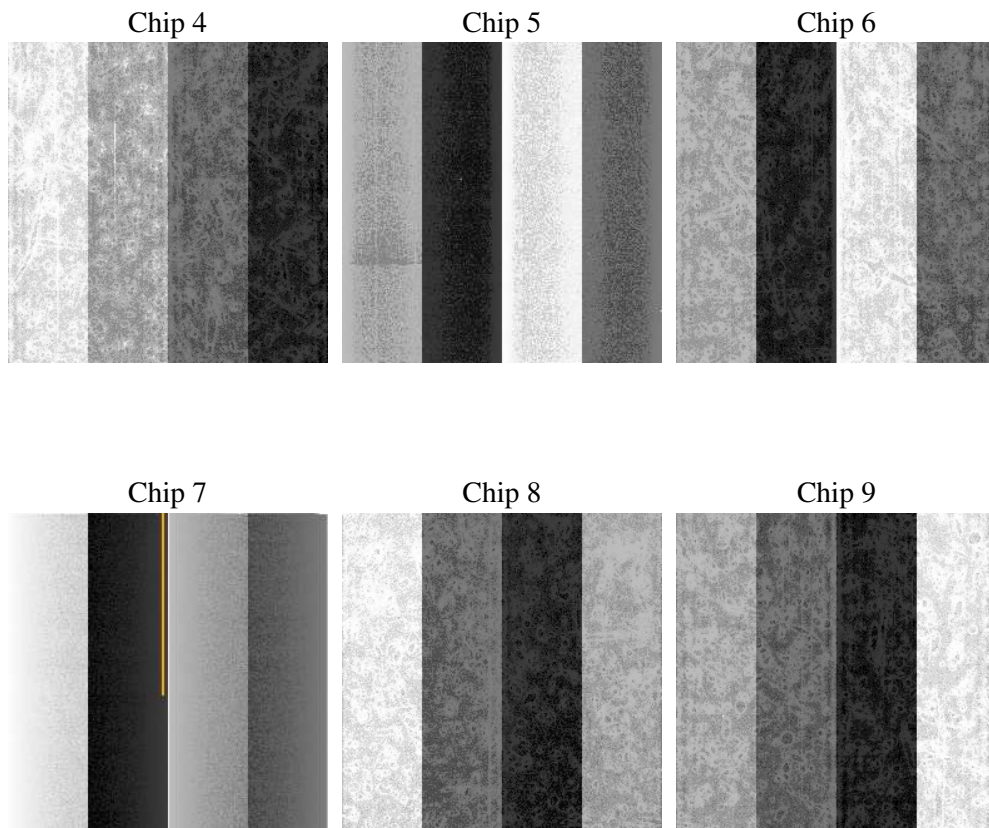
2 OBI

2.1 OBI

2.1.1 Images



2.1.2 Bias



2.1.3 Parameters

obi_num	0
ascdsver	7.6.9
caldbver	3.2.3
date	2006-10-04T20:40:44
revision	2

sched_exp_time	0.0
ontime	8170.5670144856
ontime4	2903.9686039686
ontime5	8462.2534899712
ontime6	3179.4559668005
ontime7	8170.5670144856
ontime8	3250.7590062022
ontime9	3082.2252056003
l1events	1555805

2.1.4 Events

	ccd 4	ccd 5	ccd 6	ccd 7	ccd 8	ccd 9
level 1 events	154440	425690	178592	441244	186603	169236
rejected events	22643	69604	22985	57000	25849	23246
rejected %	14%	16%	12%	12%	13%	13%

	ccd 4	ccd 5	ccd 6	ccd 7	ccd 8	ccd 9
grade 0 events	76491	45025	84964	70192	88987	80758
	49%	10%	47%	15%	47%	47%
grade 1 events	567	247	407	176	449	469
	0%	0%	0%	0%	0%	0%
grade 2 events	21104	168774	26711	115967	27674	25075
	13%	39%	14%	26%	14%	14%
grade 3 events	8715	11543	9631	28417	10312	9090
	5%	2%	5%	6%	5%	5%
grade 4 events	8512	11234	9628	28411	10317	9375
	5%	2%	5%	6%	5%	5%
grade 5 events	1393	8384	1622	7423	1884	1662
	0%	1%	0%	1%	1%	0%
grade 6 events	16975	119510	24673	141257	23464	21692
	10%	28%	13%	32%	12%	12%
grade 7 events	20683	60973	20956	49401	23516	21115
	13%	14%	11%	11%	12%	12%

2.2 Compared Parameters

Parameter	Planned	Actual	Parameter	Planned	Actual
Instrument	ACIS	ACIS	Obspar format version number	6	6
Detector	ACIS-456789	ACIS-456789	Obspar file type	PREDICTED	ACTUAL
Grating	NONE	NONE	Obspar update status	NONE	UPDATED
Data mode	FAINT	FAINT	On-chip summing requested	N	N
Observation mode	SECONDARY	SECONDARY	Subarray requested	NONE	NONE
Pointing RA	0	348.1001911365664	Alternating exposures requested	N	N
Pointing Dec	0	5.471386926680755	Primary exposure time	0.000000	3.2
Pointing Roll	0.0	237.5364135879387			
SIM focus pos (mm)	-0.684267	-0.7809083437167272			
SIM defocus (mm)	0	0.7524282956875696			
SIM translation stage pos (mm)	-190.132523	250.466033080201			
SIM translation stage offset (mm)	0	-0.01005468664627074			
Observation start time	148984507.276713	148984506.25202			
Observation start date	2002-09-21T08:35:07	2002-09-21T08:35:06			
Observation end time	149005817.027594	149005816.0029			
Observation end date	2002-09-21T14:30:17	2002-09-21T14:30:16			
Read mode	TIMED	TIMED			

2.3 Aspect

2.4 Star Slots

2.5 FID Slots

A Summary

A.1 Status

V&V Scientist	Jen Lauer
V&V Date (YYYY-MM-DD)	2006.10.05
V&V Edition	1
V&V Disposition and Status	OK
V&V Charge Time	8.16911349

A.2 Comments