

V&V Reference Report

L2 ASCDS Version : 7.6.9

Observation 61156 - L2 Version 001
Chandra X-Ray Center

L2 Processing Date : Sep 21 2006

Contents

| | | |
|----------|-------------------------------|----------|
| 1 | Front | 2 |
| 2 | OBI | 3 |
| 2.1 | OBI | 3 |
| 2.1.1 | Images | 3 |
| 2.1.2 | Bias | 3 |
| 2.1.3 | Parameters | 4 |
| 2.1.4 | Events | 4 |
| 2.2 | Compared Parameters | 5 |
| 2.3 | Aspect | 6 |
| 2.4 | Star Slots | 8 |
| 2.5 | FID Slots | 8 |
| A | Summary | 9 |
| A.1 | Status | 9 |
| A.2 | Comments | 9 |

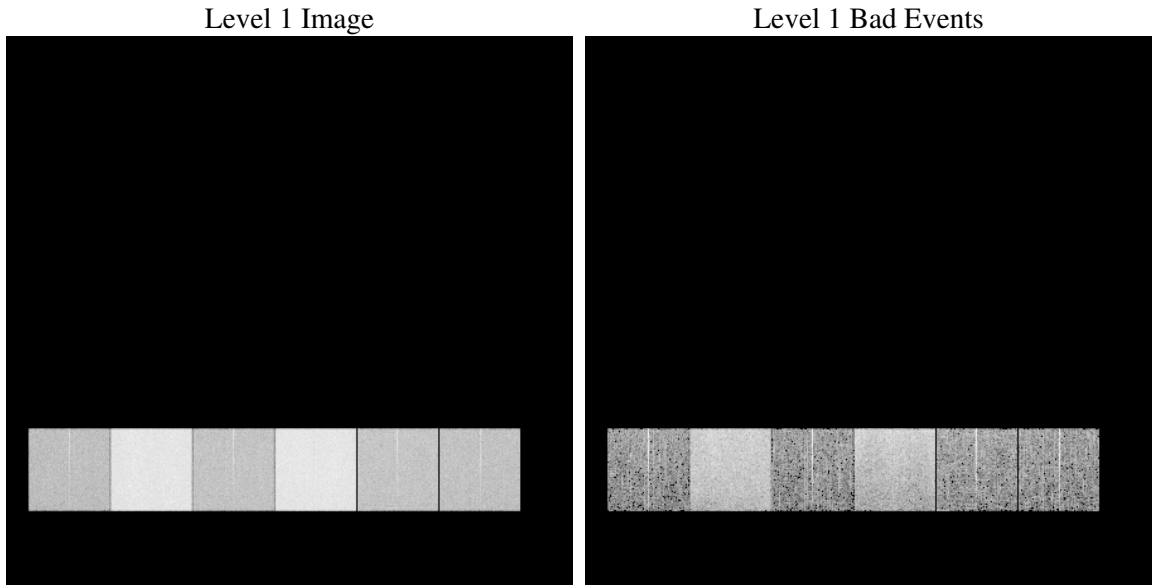
1 Front

| | |
|----------|---|
| seq_num | |
| obs_id | 61156 |
| title | ACIS-456789 diagnostics |
| observer | CHANDRA engineering request/realtime commanding |
| object | |
| dtcycle | 0 |
| cycle | P |
| ra_targ | 0.0 |
| dec_targ | 0.0 |
| ra_nom | 146.99849088724 |
| dec_nom | -23.028575867833 |
| roll_nom | 234.41680797262 |
| revision | 2 |
| ontime | 7788.896730721 |
| livetime | 7690.2690304061 |
| ontime4 | 2804.3887537718 |
| ontime5 | 8401.4785827696 |
| ontime6 | 3021.497243613 |
| ontime7 | 7788.896730721 |
| ontime8 | 3083.1587944031 |
| ontime9 | 2950.0709547997 |
| l2events | 1291712 |

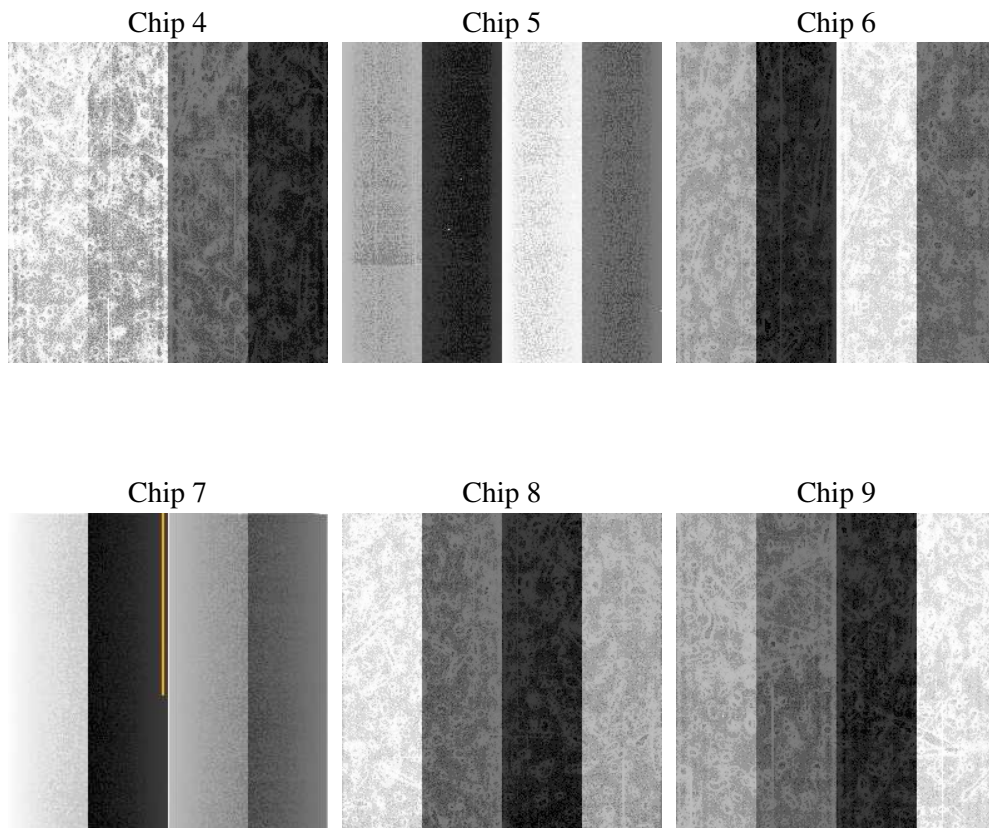
2 OBI

2.1 OBI

2.1.1 Images



2.1.2 Bias



2.1.3 Parameters

| | |
|----------|---------------------|
| obi_num | 0 |
| ascdsver | 7.6.9 |
| caldbver | 3.2.3 |
| date | 2006-09-21T11:01:45 |
| revision | 2 |

| | |
|----------------|-----------------|
| sched_exp_time | 0.0 |
| ontime | 7791.3687794209 |
| ontime4 | 2806.7376824617 |
| ontime5 | 8403.9095914662 |
| ontime6 | 3023.8872123063 |
| ontime7 | 7791.3687794209 |
| ontime8 | 3085.4666831195 |
| ontime9 | 2952.5840435028 |
| l1events | 1565587 |

2.1.4 Events

| | ccd 4 | ccd 5 | ccd 6 | ccd 7 | ccd 8 | ccd 9 |
|-----------------|--------|--------|--------|--------|--------|--------|
| level 1 events | 156724 | 433728 | 179065 | 442260 | 184716 | 169094 |
| rejected events | 23142 | 68692 | 23014 | 56429 | 25744 | 23189 |
| rejected % | 14% | 15% | 12% | 12% | 13% | 13% |

| | ccd 4 | ccd 5 | ccd 6 | ccd 7 | ccd 8 | ccd 9 |
|----------------|-------|--------|-------|--------|-------|-------|
| grade 0 events | 75422 | 42340 | 85383 | 69884 | 87840 | 79505 |
| | 48% | 9% | 47% | 15% | 47% | 47% |
| grade 1 events | 412 | 122 | 376 | 160 | 423 | 376 |
| | 0% | 0% | 0% | 0% | 0% | 0% |
| grade 2 events | 23829 | 175440 | 26920 | 116847 | 28059 | 26002 |
| | 15% | 40% | 15% | 26% | 15% | 15% |
| grade 3 events | 8248 | 12132 | 9464 | 28625 | 10055 | 9114 |
| | 5% | 2% | 5% | 6% | 5% | 5% |
| grade 4 events | 8176 | 11783 | 9700 | 28173 | 9896 | 8945 |
| | 5% | 2% | 5% | 6% | 5% | 5% |
| grade 5 events | 1406 | 7613 | 1521 | 7610 | 1914 | 1573 |
| | 0% | 1% | 0% | 1% | 1% | 0% |
| grade 6 events | 18036 | 123486 | 24737 | 142441 | 23307 | 22481 |
| | 11% | 28% | 13% | 32% | 12% | 13% |
| grade 7 events | 21195 | 60812 | 20964 | 48520 | 23222 | 21098 |
| | 13% | 14% | 11% | 10% | 12% | 12% |

2.2 Compared Parameters

| Parameter | Planned | Actual | Parameter | Planned | Actual |
|-----------------------------------|---------------------|----------------------|---------------------------------|-----------|---------|
| Instrument | ACIS | ACIS | Obspar format version number | 6 | 6 |
| Detector | ACIS-456789 | ACIS-456789 | Obspar file type | PREDICTED | ACTUAL |
| Grating | NONE | NONE | Obspar update status | NONE | UPDATED |
| Data mode | FAINT | FAINT | On-chip summing requested | N | N |
| Observation mode | SECONDARY | SECONDARY | Subarray requested | NONE | NONE |
| Pointing RA | 0 | 146.9984908872447 | Alternating exposures requested | N | N |
| Pointing Dec | 0 | -23.02857586783279 | Primary exposure time | 3.2 | 3.2 |
| Pointing Roll | 0.0 | 234.4168079726172 | | | |
| SIM focus pos (mm) | -0.684267 | -0.7809083437167272 | | | |
| SIM defocus (mm) | 0 | 0.7524282956875696 | | | |
| SIM translation stage pos (mm) | -190.132523 | 250.466033080201 | | | |
| SIM translation stage offset (mm) | 0 | -0.01005468664627074 | | | |
| Observation start time | 140985679.59749 | 140985678.57278 | | | |
| Observation start date | 2002-06-20T18:41:20 | 2002-06-20T18:41:18 | | | |
| Observation end time | 141006989.348362 | 141006988.32365 | | | |
| Observation end date | 2002-06-21T00:36:29 | 2002-06-21T00:36:28 | | | |
| Read mode | TIMED | TIMED | | | |

2.3 Aspect

2.4 Star Slots

2.5 FID Slots

A Summary

A.1 Status

| | |
|----------------------------|------------|
| V&V Scientist | Jen Lauer |
| V&V Date (YYYY-MM-DD) | 2006.09.21 |
| V&V Edition | 1 |
| V&V Disposition and Status | OK |
| V&V Charge Time | 7.78889673 |

A.2 Comments

The ACIS focal plane temperature was above calibration limits for the first 3 ksec of the observation