

V&V Reference Report

L2 ASCDS Version : 8.5

Observation 6146 - L2 Version 3
Chandra X-Ray Center

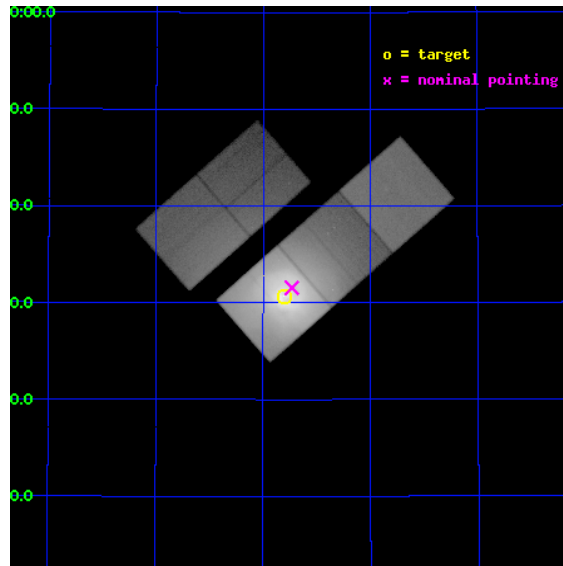
L2 Processing Date : Dec 11 2012

Contents

1	Front	2
2	OBI	3
2.1	OBI	3
2.1.1	Images	3
2.1.2	Bias	3
2.1.3	Parameters	4
2.1.4	Events	4
2.2	Compared Parameters	5
2.3	Aspect	6
2.4	Star Slots	9
2.4.1	Slot 3	9
2.4.2	Slot 4	10
2.4.3	Slot 5	11
2.4.4	Slot 6	12
2.4.5	Slot 7	13
2.5	FID Slots	14
2.5.1	Slot 0	14
2.5.2	Slot 1	15
2.5.3	Slot 2	16
A	Summary	17
A.1	Status	17
A.2	Comments	17

1 Front

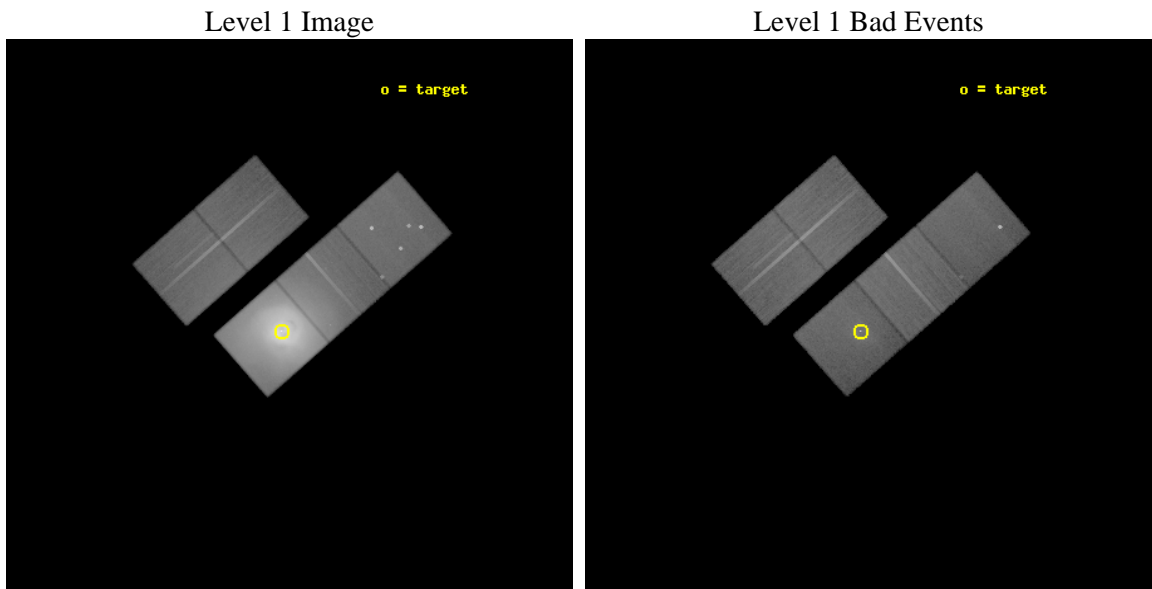
seq_num	800398	Sequence number
obs_id	6146	Observation id
title	A Megasecond Image of the Core of the Perseus Cluster	Proposal tit
observer	Professor Andrew Fabian	Principal investigator
object	Abell 426	Source name
dtycycle	0	
cycle	P	events from which exps? Prim/Second/Both
ra_targ	49.950833	Observer's specified target RA [deg]
dec_targ	41.511722	Observer's specified target Dec [deg]
ra_nom	49.93297274409	Nominal RA [deg]
dec_nom	41.525763328977	Nominal Dec [deg]
roll_nom	138.6898909215	Nominal Roll [deg]
revision	3	Processing version of data
ontime	47752.399908155	Sum of GTIs [s]
livetime	47128.47964855	Livetime [s]
ontime2	47752.399908155	Sum of GTIs [s]
ontime3	47746.117917746	Sum of GTIs [s]
ontime5	47752.399908155	Sum of GTIs [s]
ontime6	47752.399908155	Sum of GTIs [s]
ontime7	47752.399908155	Sum of GTIs [s]
l2events	4718094	Number of level 2 events



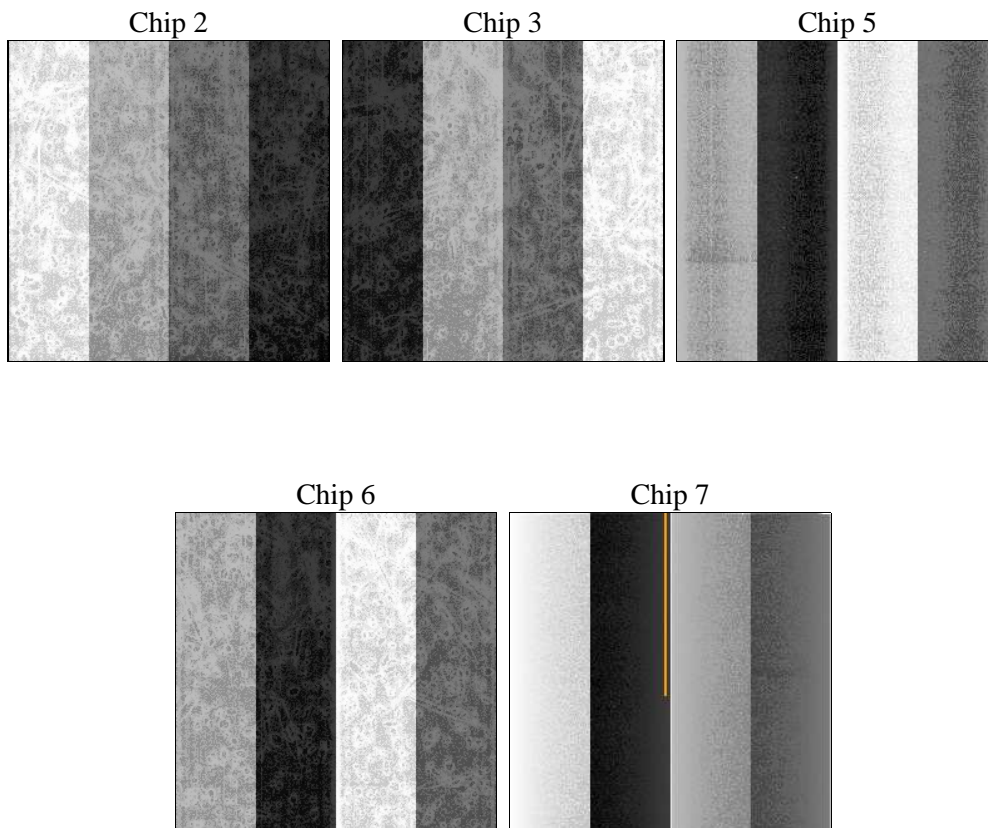
2 OBI

2.1 OBI

2.1.1 Images



2.1.2 Bias



2.1.3 Parameters

obi_num	0	Obi number	sched_exp_time	47983.190000	[s] Scheduled observation exposure time
ascdsver	8.5	Processing system revision	ontime	47752.399908155	Sum of GTIs [s]
caldbver	4.5.4	 	ontime2	47752.399908155	Sum of GTIs [s]
date	2012-12-10T13:07:28	Date and time of file creation	ontime3	47746.117917746	Sum of GTIs [s]
revision	3	Processing version of data	ontime5	47752.399908155	Sum of GTIs [s]
			ontime6	47752.399908155	Sum of GTIs [s]
			ontime7	47752.399908155	Sum of GTIs [s]
			l1events	6215691	Number of level 1 events

2.1.4 Events

	ccd 2	ccd 3	ccd 5	ccd 6	ccd 7
level 1 events	436034	490196	543745	789701	3956015
rejected events	311461	291779	232122	308658	236254
rejected %	71%	59%	42%	39%	5%

	ccd 2	ccd 3	ccd 5	ccd 6	ccd 7
grade 0 events	86855	147229	66986	372104	1018165
	19%	30%	12%	47%	25%
grade 1 events	575	886	548	1699	2935
	0%	0%	0%	0%	0%
grade 2 events	16544	23398	88473	53660	978203
	3%	4%	16%	6%	24%
grade 3 events	6547	8918	16369	17722	434931
	1%	1%	3%	2%	10%
grade 4 events	6479	8710	15341	17673	428747
	1%	1%	2%	2%	10%
grade 5 events	10719	13032	36293	14374	63238
	2%	2%	6%	1%	1%
grade 6 events	8162	10182	124498	19946	860201
	1%	2%	22%	2%	21%
grade 7 events	300153	277841	195237	292523	169595
	68%	56%	35%	37%	4%

2.2 Compared Parameters

Parameter	Planned	Actual	Parameter	Planned	Actual
Instrument	ACIS	ACIS	Obspar format version number	7	7
Detector	ACIS-23567	ACIS-23567	Obspar file type	PREDICTED	ACTUAL
Grating	NONE	NONE	Obspar update status	NONE	UPDATED
Data mode	FAINT	FAINT	Number of optional ACIS chips dropped	0	0
Observation mode	POINTING	POINTING	On-chip summing requested	N	N
[deg] Pointing RA	49.968755	49.93297274408956	Subarray requested	NONE	NONE
[deg] Pointing Dec	41.520772	41.52576332897687	Alternating exposures requested	N	N
[deg] Pointing Roll	138.509545	138.6898909215043	[s] Primary exposure time	0.000000	3.1
[mm] SIM focus pos	-0.684267	-0.6828225247311905			
[mm] SIM defocus	0	0.001444936568705701			
[mm] SIM translation stage pos	-190.132523	-190.1425803651734			
[mm] SIM translation stage offset	0	0.01005778216563158			
[s] Observation start time (MET)	214699530.184000	214699150.71981			
Observation start date	2004-10-20T22:44:26	2004-10-20T22:39:10			
[s] Observation end time (MET)	214747513.184000	214747728.03449			
Observation end date	2004-10-21T12:04:09	2004-10-21T12:08:48			
Read mode	TIMED	TIMED			

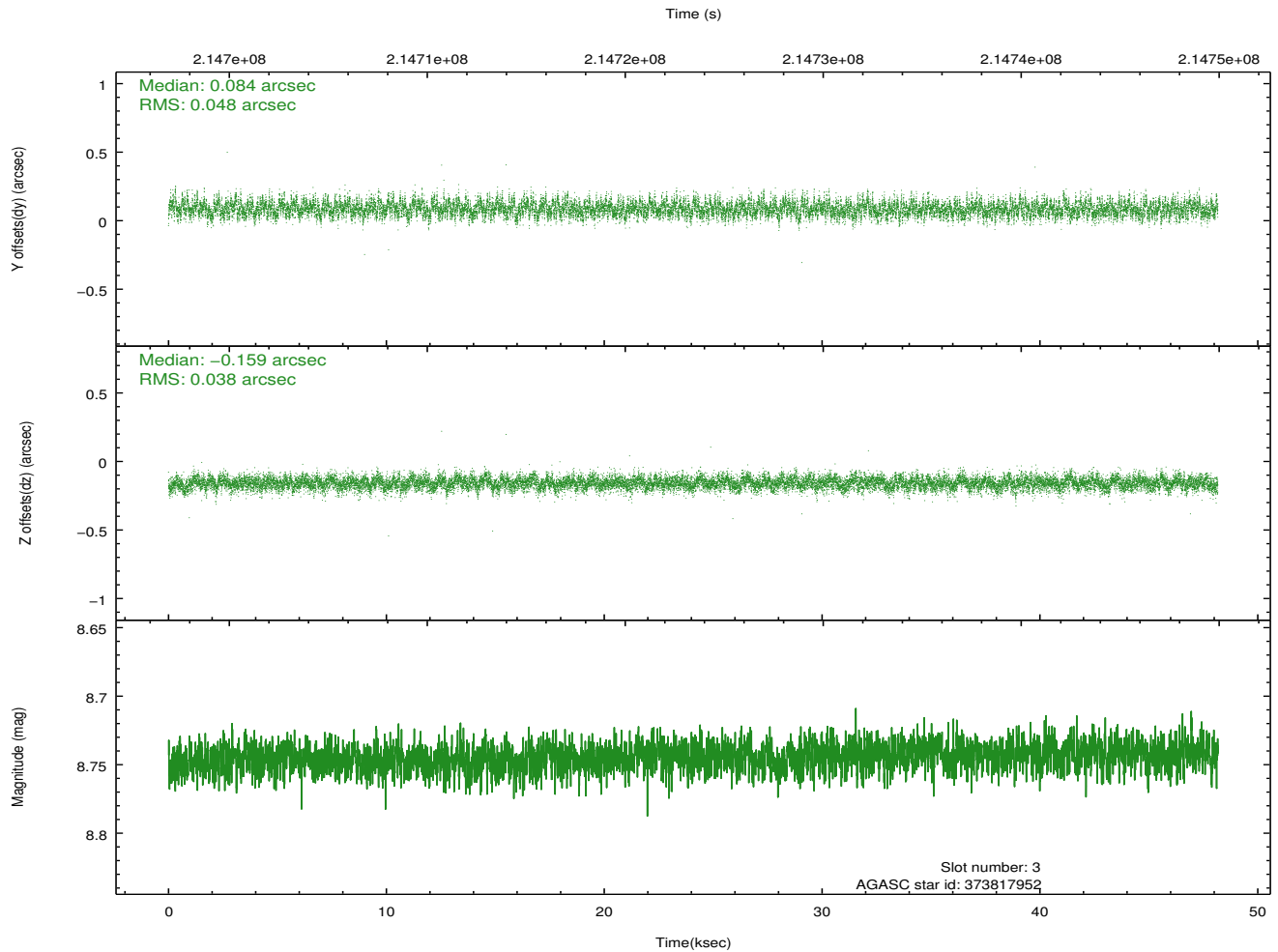
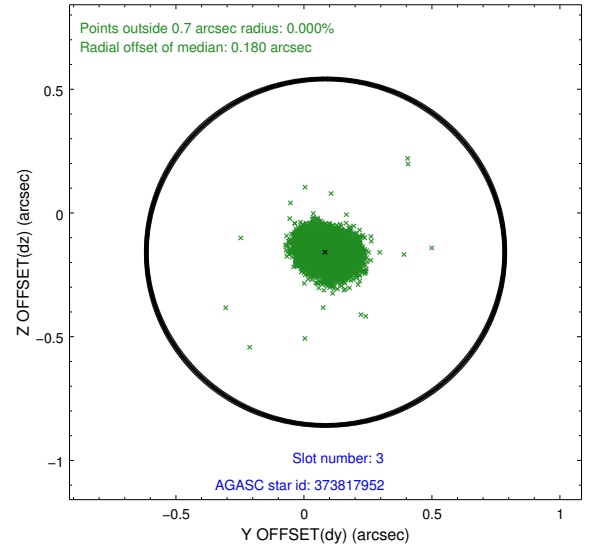
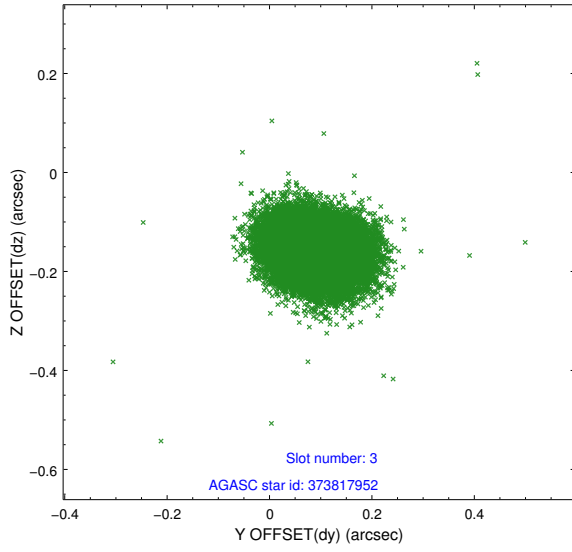
2.3 Aspect

Slot Statistics

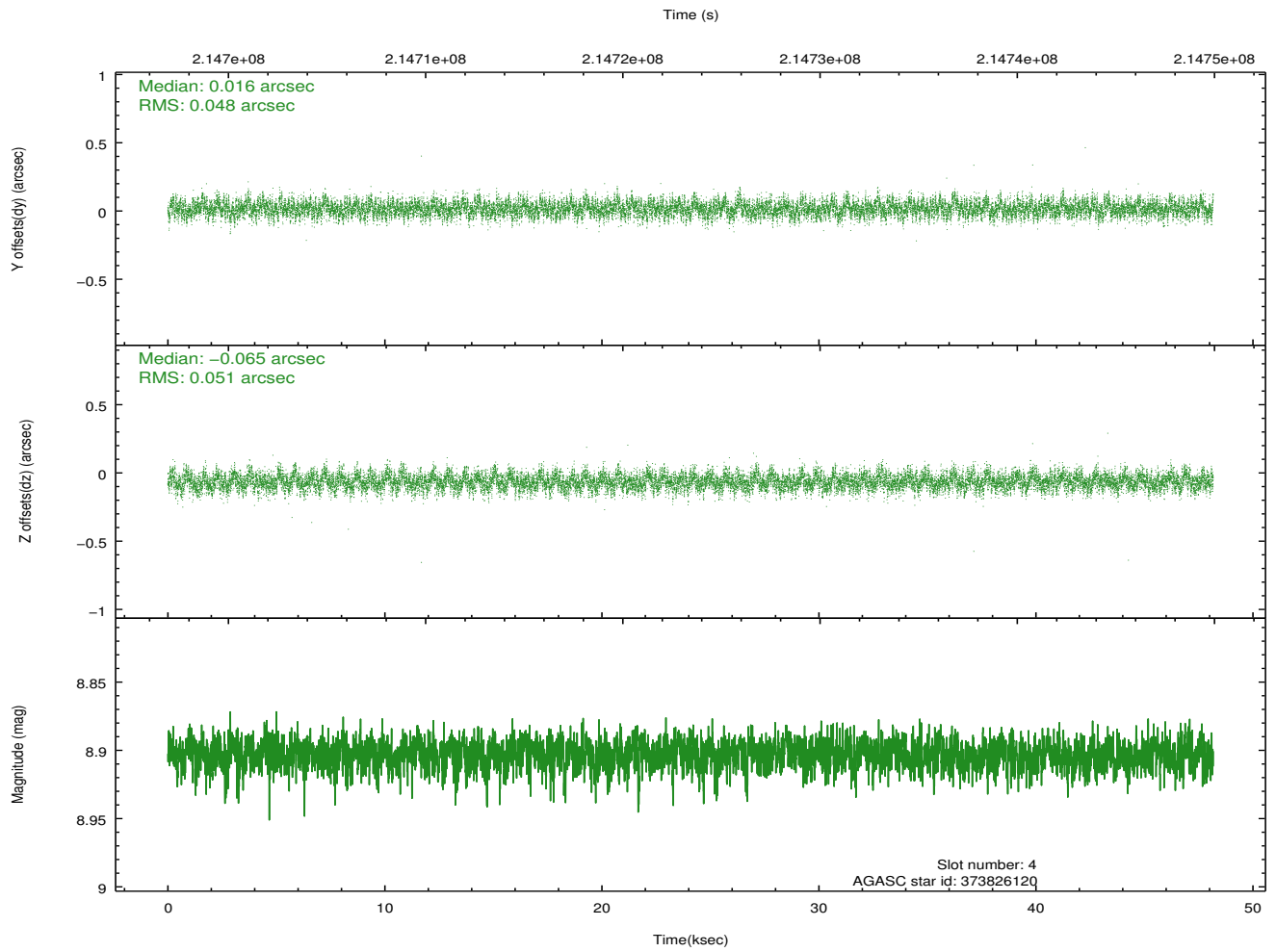
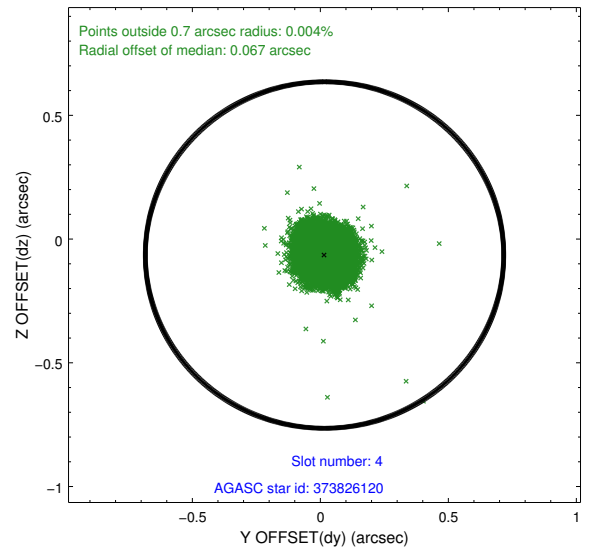
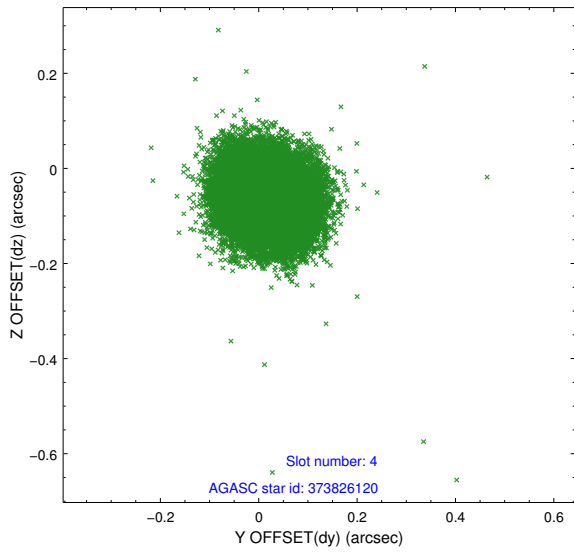
slot	status	id	mag	n_pts	med_dy	med_dz	dr1	dr2	ra	dec	mean_y	mean_z
0	FID	ACIS-S-2	7.10	11747	-0.051	-0.035	0.007	0.011	0.000000	0.000000	-759.30	-1730.60
1	FID	ACIS-S-4	7.21	11749	0.081	0.034	0.005	0.010	0.000000	0.000000	2154.10	177.99
2	FID	ACIS-S-5	7.23	11749	-0.061	0.010	0.006	0.011	0.000000	0.000000	-1812.19	171.59
3	GUIDE	373817952	8.74	23488	0.084	-0.159	0.064	0.106	49.913424	40.978510	-1180.76	1561.68
4	GUIDE	373826120	8.90	23487	0.016	-0.065	0.075	0.120	49.738165	41.186341	-329.24	1315.19
5	GUIDE	374352576	9.71	23457	0.003	0.003	0.099	0.163	48.746850	41.454001	2325.48	2347.46
6	GUIDE	374352808	8.77	23480	-0.105	0.116	0.067	0.109	49.969955	42.208621	1638.58	-1856.35
7	GUIDE	376057824	8.35	23494	-0.004	0.105	0.069	0.112	50.665569	41.926280	-425.48	-2335.46

2.4 Star Slots

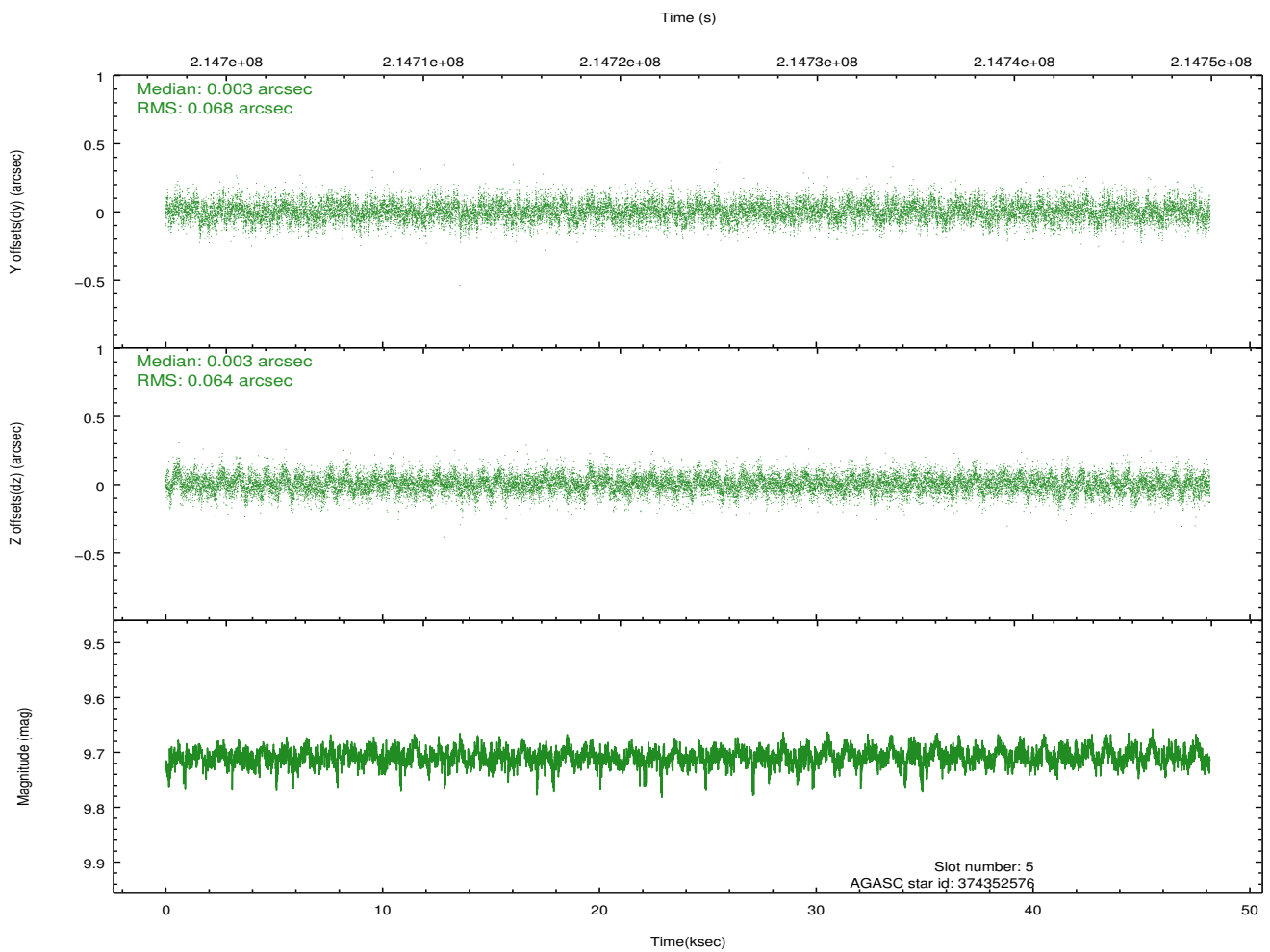
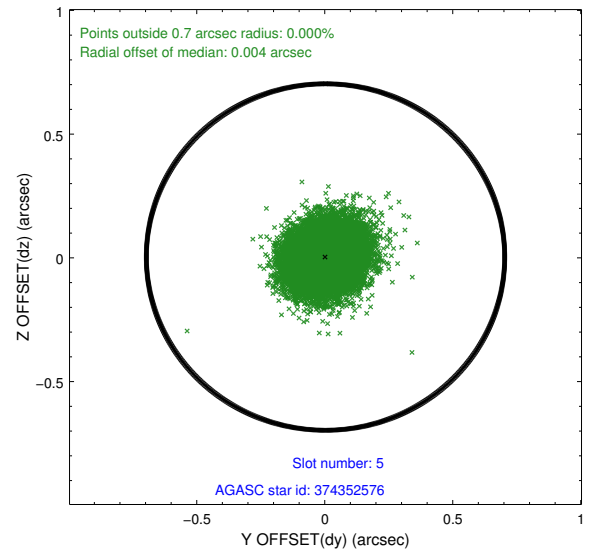
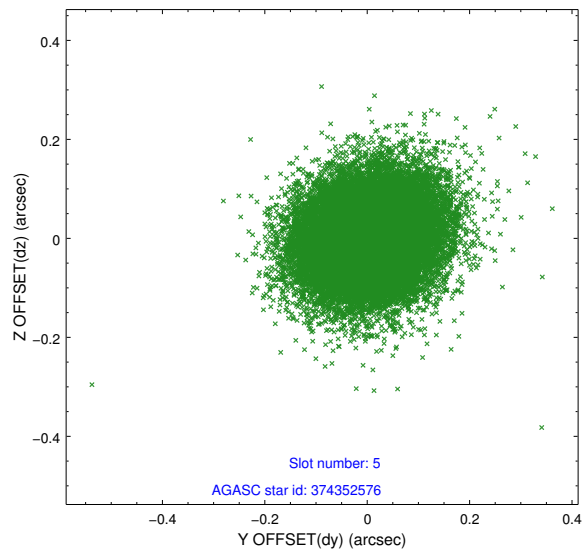
2.4.1 Slot 3



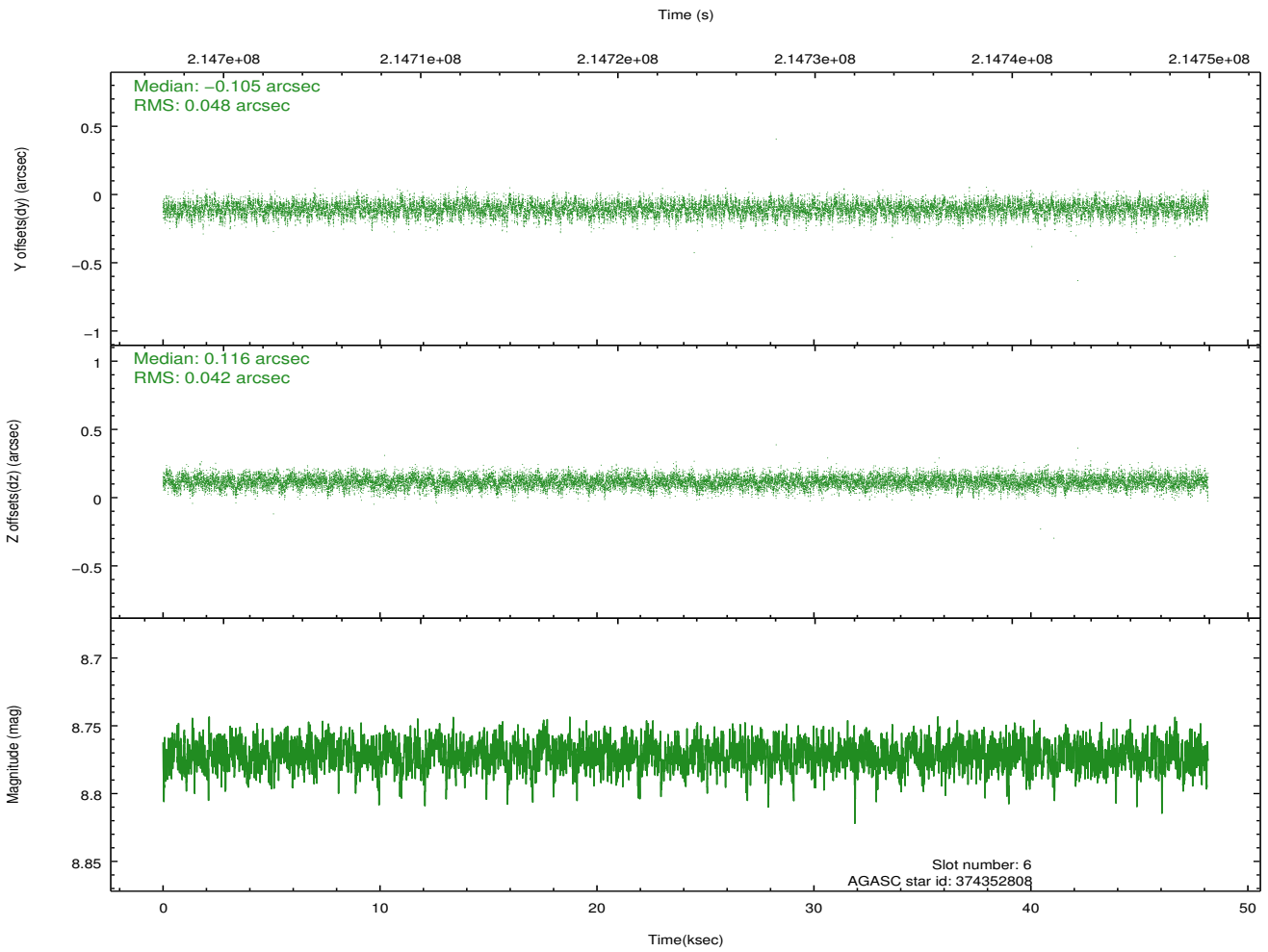
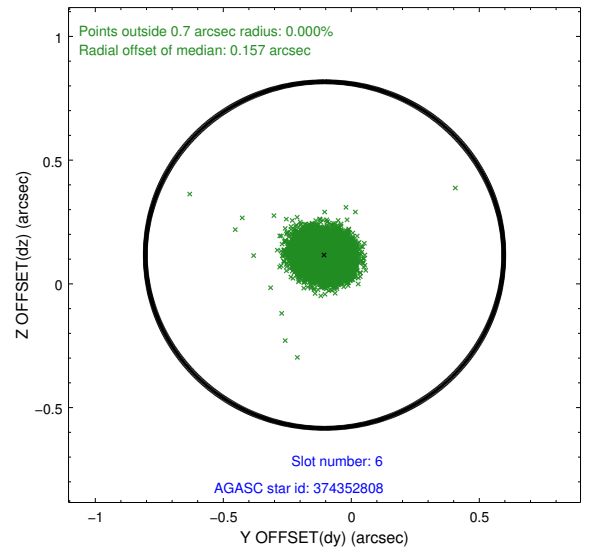
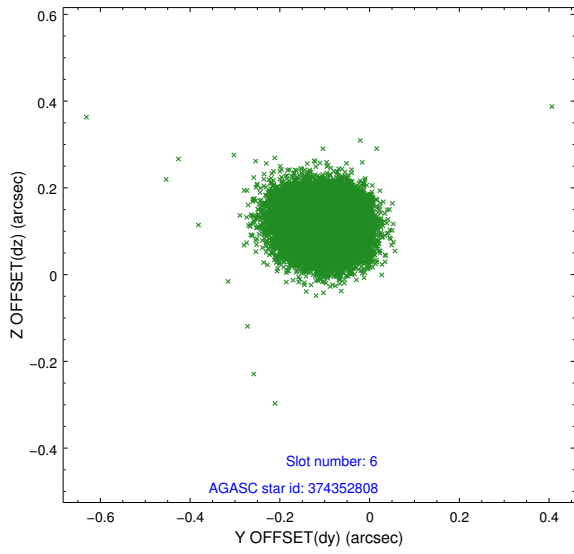
2.4.2 Slot 4



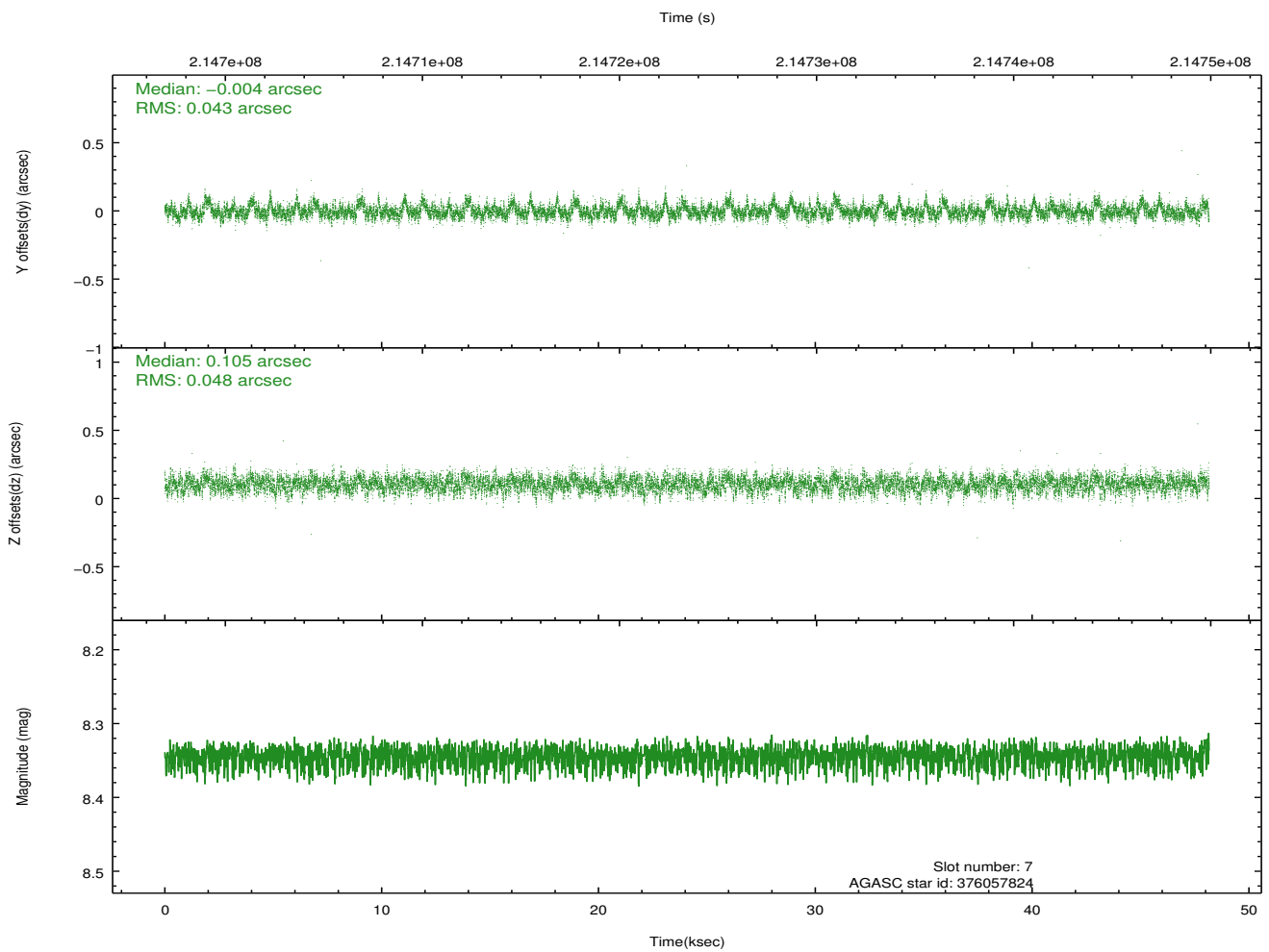
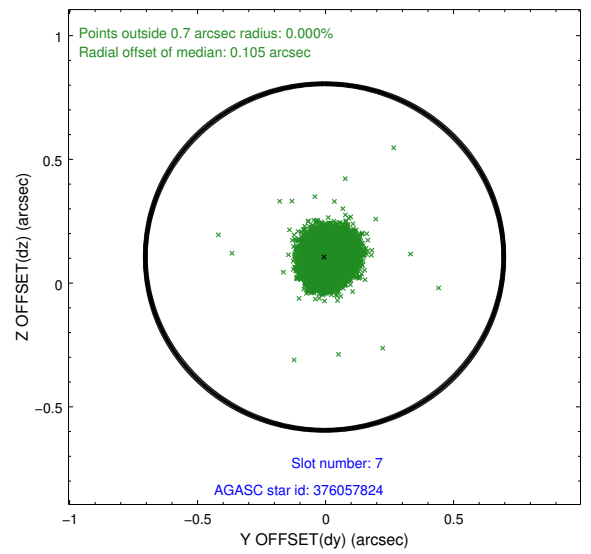
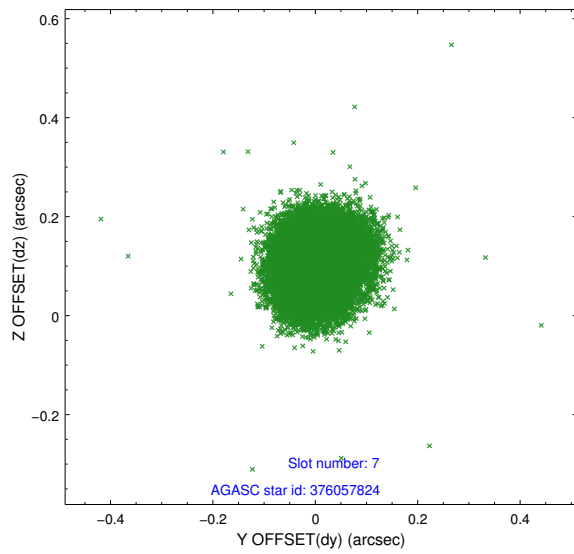
2.4.3 Slot 5



2.4.4 Slot 6

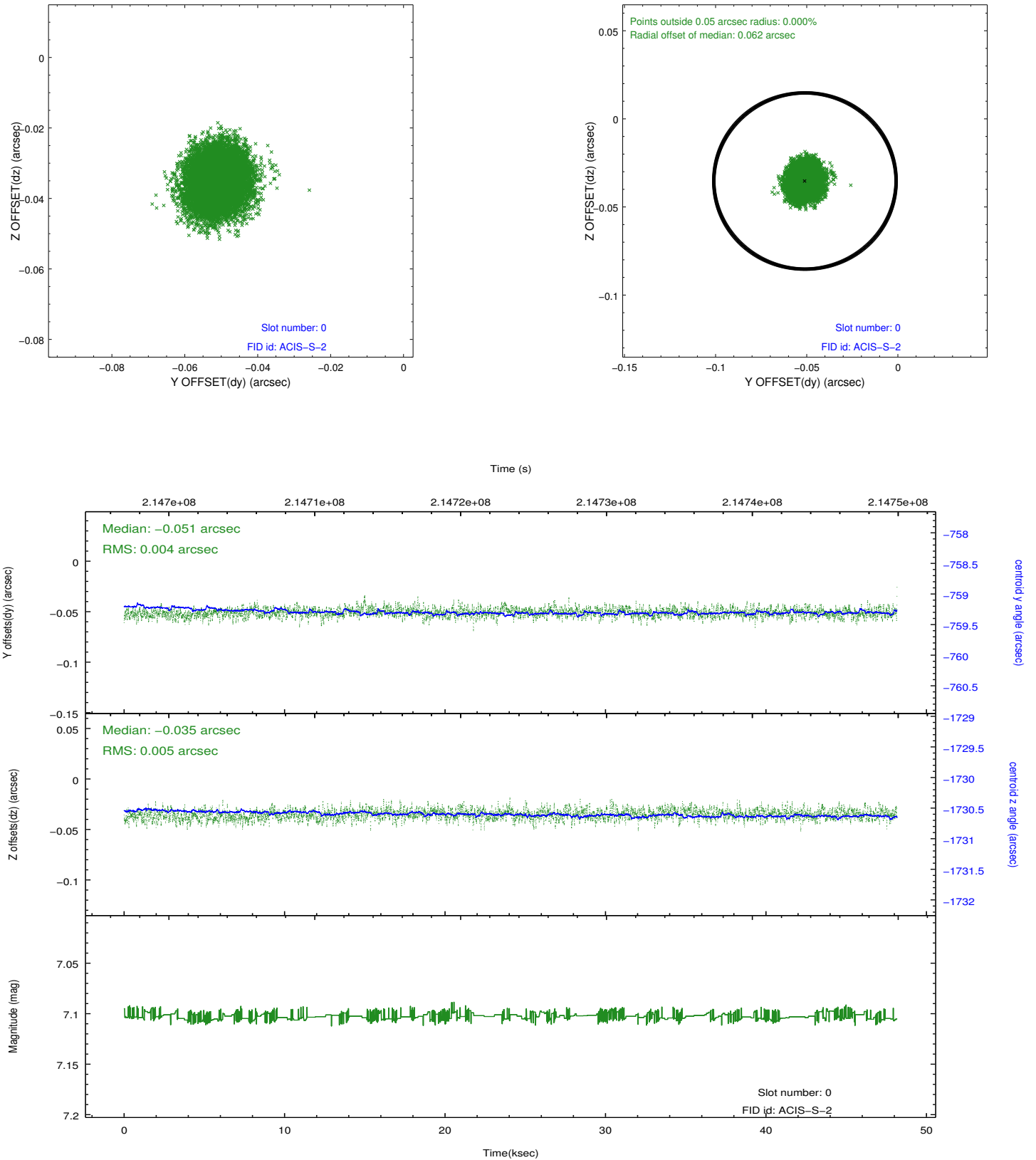


2.4.5 Slot 7

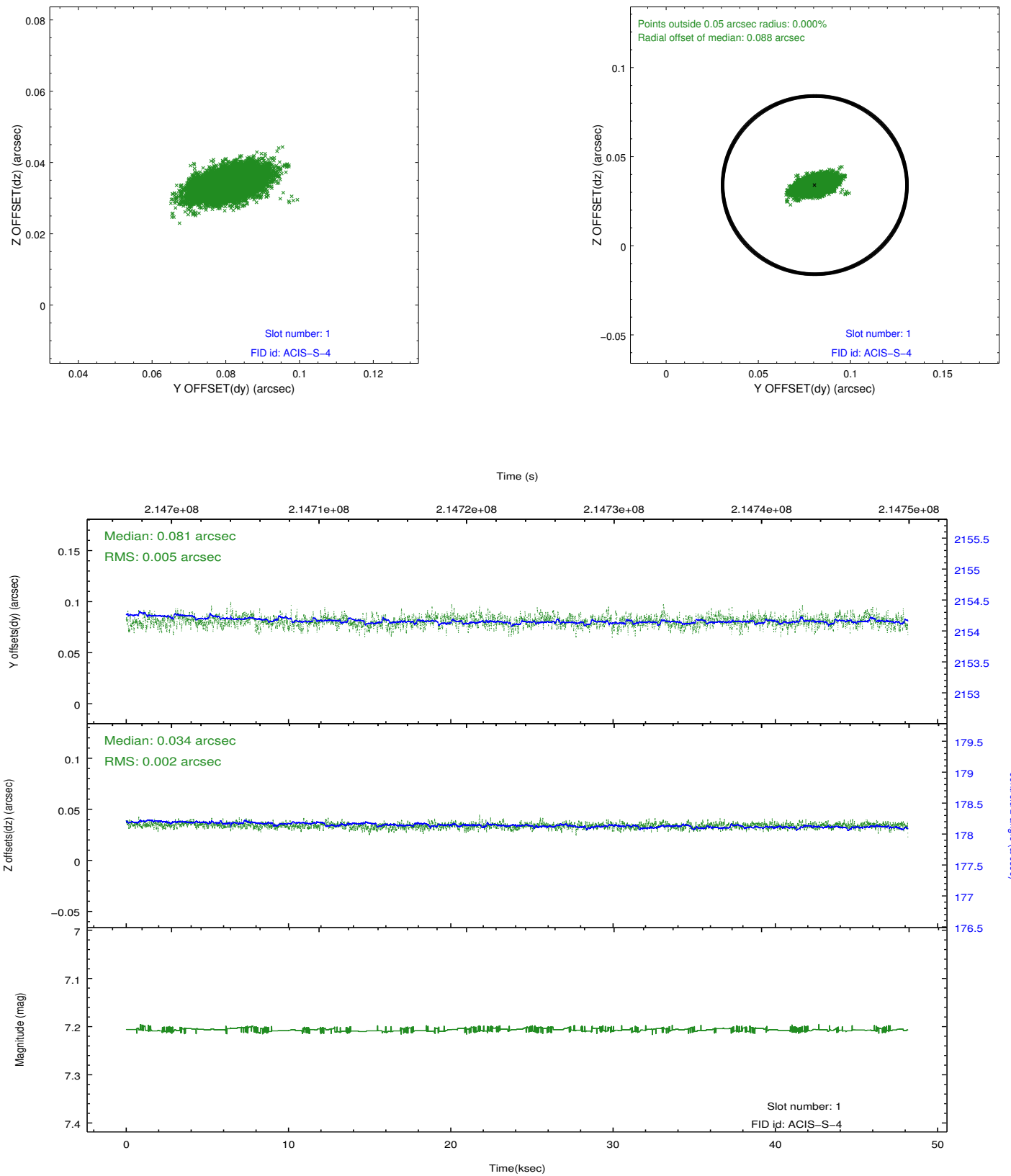


2.5 FID Slots

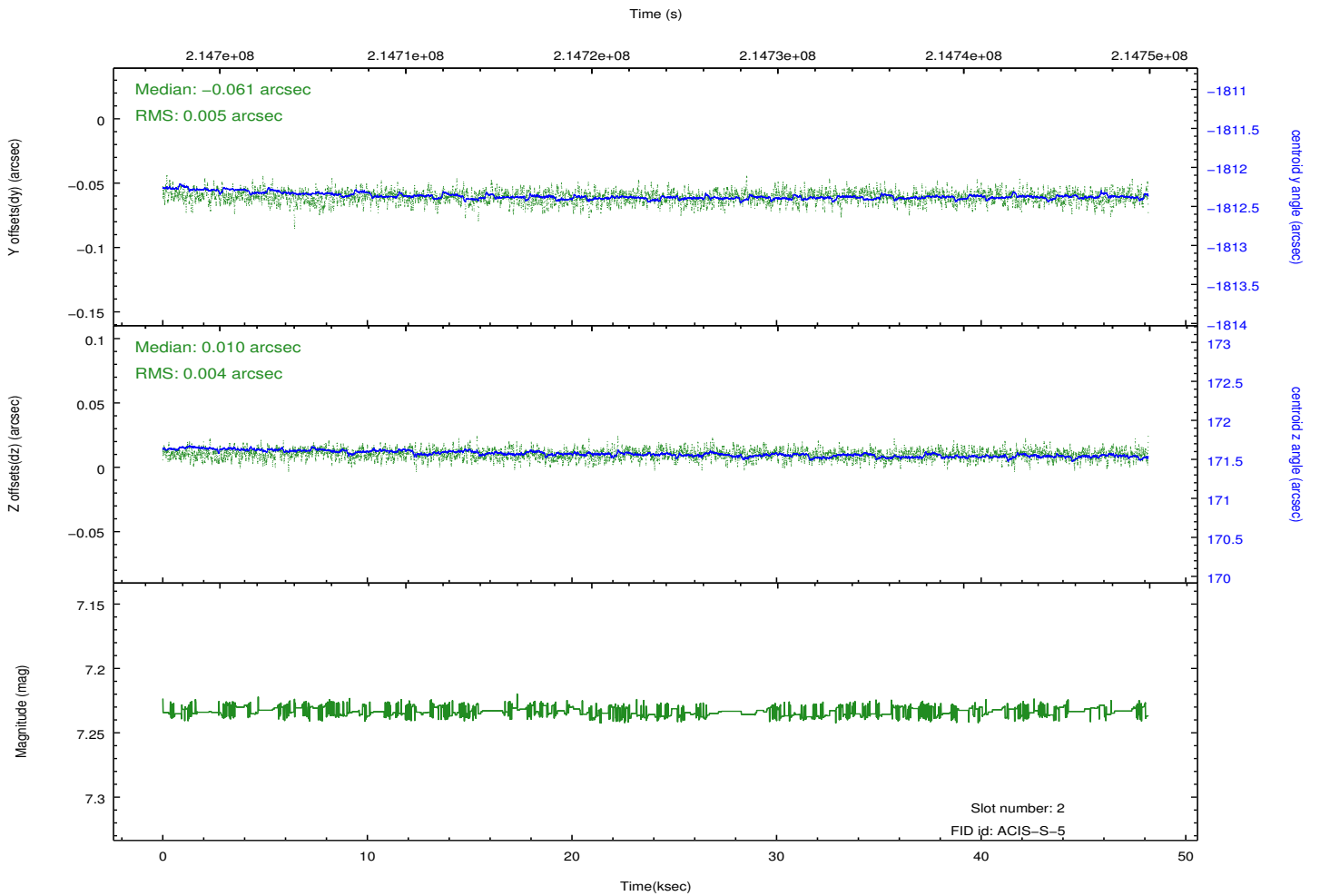
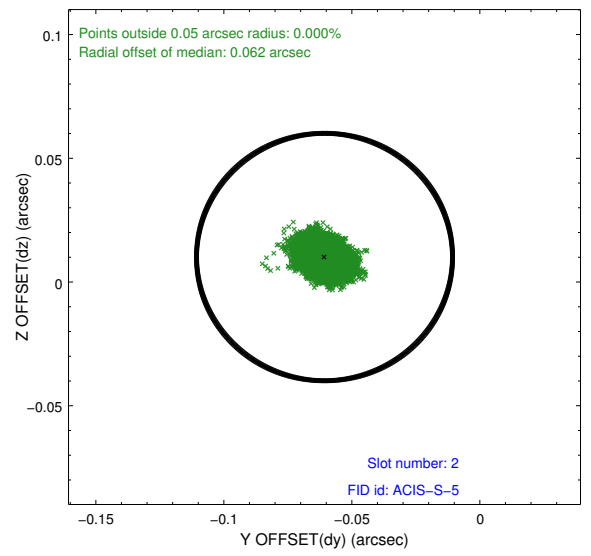
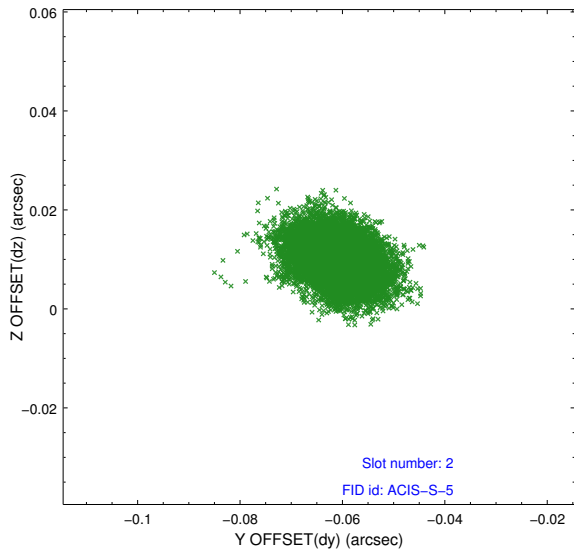
2.5.1 Slot 0



2.5.2 Slot 1



2.5.3 Slot 2



A Summary

A.1 Status

V&V Scientist	Jen Lauer
V&V Date (YYYY-MM-DD)	2013.01.03
V&V Edition	1
V&V Disposition and Status	OK
V&V Charge Time	47.752

A.2 Comments