

V&V Reference Report

L2 ASCDS Version : 7.6.9

Observation 61486 - L2 Version 001
Chandra X-Ray Center

L2 Processing Date : Dec 30 2006

Contents

1	Front	2
2	OBI	3
2.1	OBI	3
2.1.1	Images	3
2.1.2	Bias	3
2.1.3	Parameters	4
2.1.4	Events	4
2.2	Compared Parameters	5
2.3	Aspect	6
2.4	Star Slots	8
2.5	FID Slots	8
A	Summary	9
A.1	Status	9
A.2	Comments	9

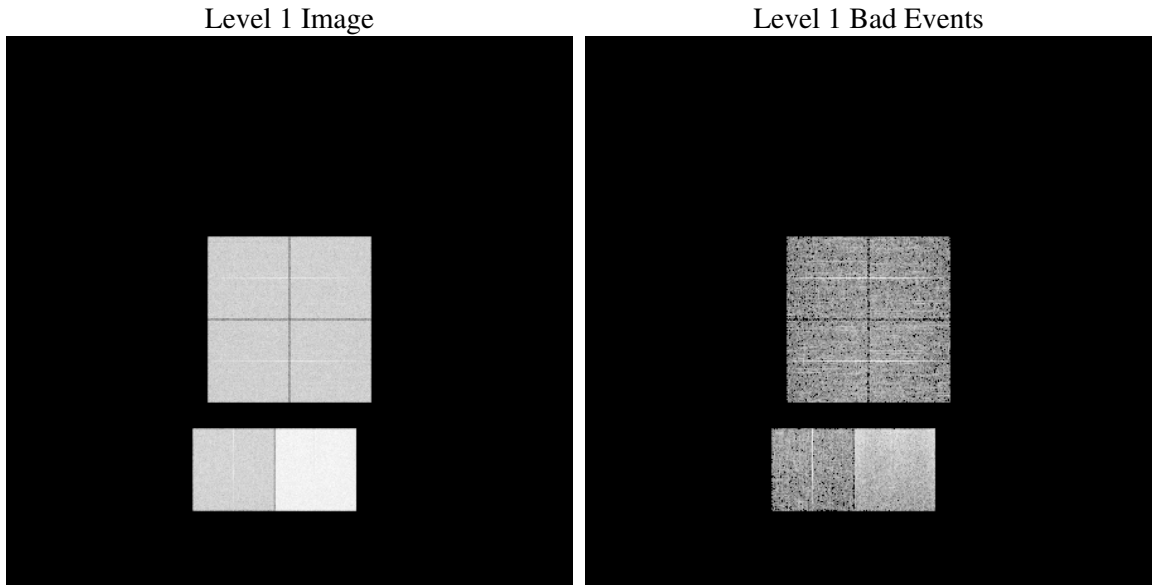
1 Front

seq_num	
obs_id	61486
title	ACIS-012367 diagnostics
observer	CHANDRA engineering request/realtime commanding
object	
dtcycle	0
cycle	P
ra_targ	0.0
dec_targ	0.0
ra_nom	46.984169739559
dec_nom	-64.972173167805
roll_nom	70.667426143756
revision	2
ontime	6912.0548033118
livetime	6824.5302034526
ontime0	2818.7374432683
ontime1	2857.6701160371
ontime2	2721.5885726064
ontime3	2721.424153477
ontime6	2909.6090054065
ontime7	6912.0548033118
l2events	1221349

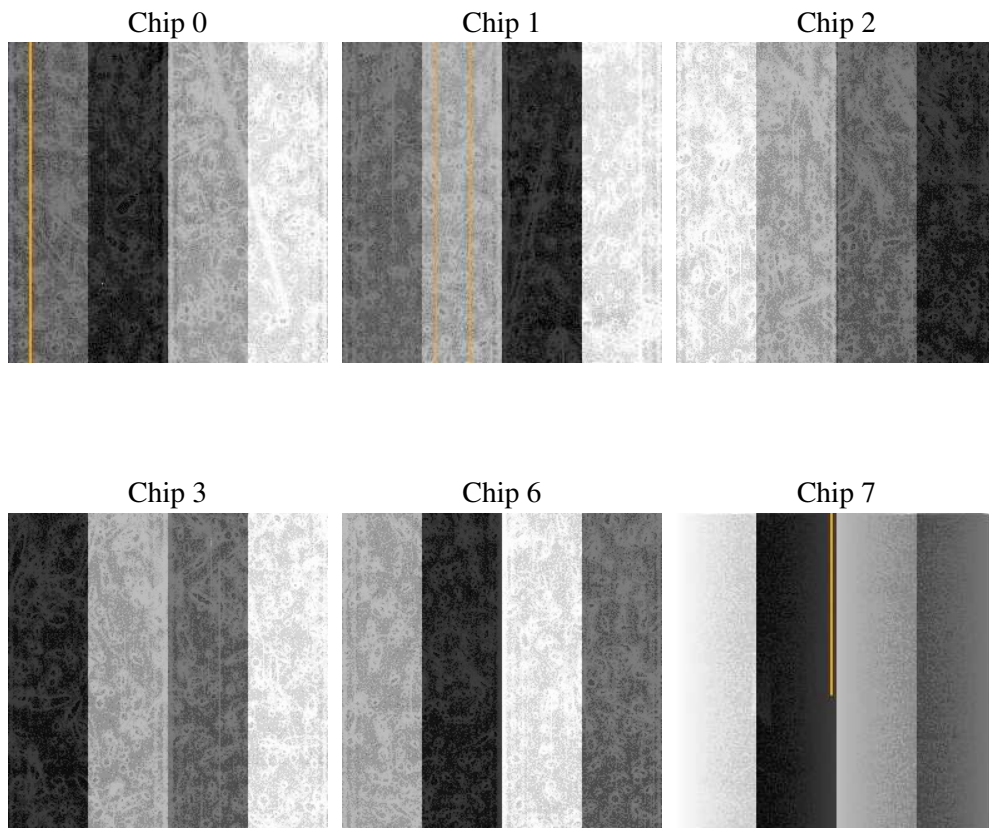
2 OBI

2.1 OBI

2.1.1 Images



2.1.2 Bias



2.1.3 Parameters

obi_num	0
ascdsver	7.6.9
caldbver	3.2.4
date	2006-12-30T22:42:06
revision	2

sched_exp_time	0.0
ontime	6913.05992347
ontime0	2819.7015234232
ontime1	2858.5931562036
ontime2	2722.4705727696
ontime3	2722.4703136384
ontime6	2910.4499655664
ontime7	6913.05992347
l1events	1423692

2.1.4 Events

	ccd 0	ccd 1	ccd 2	ccd 3	ccd 6	ccd 7
level 1 events	188306	191074	185972	187689	204793	465858
rejected events	19353	19832	20535	21739	21187	47597
rejected %	10%	10%	11%	11%	10%	10%

	ccd 0	ccd 1	ccd 2	ccd 3	ccd 6	ccd 7
grade 0 events	92581	94575	92141	92551	100289	80269
	49%	49%	49%	49%	48%	17%
grade 1 events	441	459	455	466	468	185
	0%	0%	0%	0%	0%	0%
grade 2 events	29901	30178	29245	29129	31686	123892
	15%	15%	15%	15%	15%	26%
grade 3 events	10979	10703	10339	10693	11310	32686
	5%	5%	5%	5%	5%	7%
grade 4 events	10623	10774	10374	10546	11327	31791
	5%	5%	5%	5%	5%	6%
grade 5 events	1458	1518	1391	1445	1609	6755
	0%	0%	0%	0%	0%	1%
grade 6 events	24869	25012	23338	23031	28994	149623
	13%	13%	12%	12%	14%	32%
grade 7 events	17454	17855	18689	19828	19110	40657
	9%	9%	10%	10%	9%	8%

2.2 Compared Parameters

Parameter	Planned	Actual	Parameter	Planned	Actual
Instrument	ACIS	ACIS	Obspar format version number	6	6
Detector	ACIS-012367	ACIS-012367	Obspar file type	PREDICTED	ACTUAL
Grating	NONE	NONE	Obspar update status	NONE	UPDATED
Data mode	FAINT	FAINT	On-chip summing requested	N	N
Observation mode	SECONDARY	SECONDARY	Subarray requested	NONE	NONE
Pointing RA	0	46.98416973955882	Alternating exposures requested	N	N
Pointing Dec	0	-64.97217316780531	Primary exposure time	3.2	3.2
Pointing Roll	0.0	70.66742614375622			
SIM focus pos (mm)	-0.782348	-0.6828225247311905			
SIM defocus (mm)	0	0.8505141146731063			
SIM translation stage pos (mm)	-233.592463	250.466033080201			
SIM translation stage offset (mm)	0	-0.01005468664627074			
Observation start time	115822774.978404	115822774.20991			
Observation start date	2001-09-02T12:59:35	2001-09-02T12:59:34			
Observation end time	115833844.978843	115833844.21035			
Observation end date	2001-09-02T16:04:05	2001-09-02T16:04:04			
Read mode	TIMED	TIMED			

2.3 Aspect

2.4 Star Slots

2.5 FID Slots

A Summary

A.1 Status

V&V Scientist	Beth Sundheim
V&V Date (YYYY-MM-DD)	2007.01.03
V&V Edition	1
V&V Disposition and Status	OK
V&V Charge Time	6.9120548

A.2 Comments