

V&V Reference Report

L2 ASCDS Version : 8.4.3

Observation 6236 - L2 Version 4
Chandra X-Ray Center

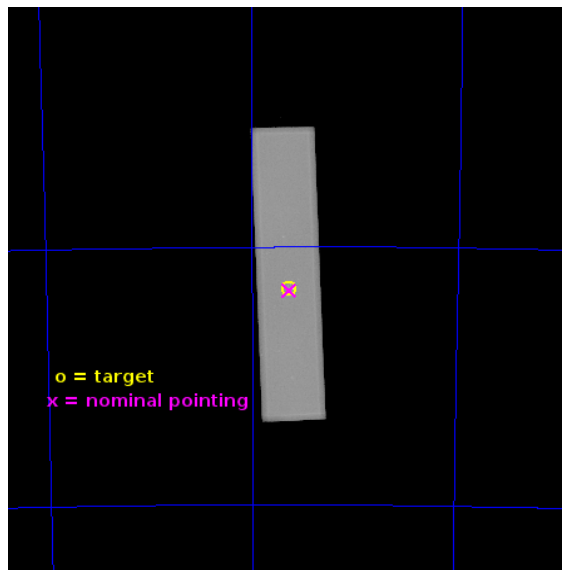
L2 Processing Date : Jun 29 2013

Contents

1	Front	2
2	OBI	3
2.1	OBI	3
2.1.1	Images	3
2.1.2	Parameters	4
2.1.3	Events	4
2.2	Compared Parameters	5
2.3	Aspect	6
2.4	Star Slots	9
2.4.1	Slot 3	9
2.4.2	Slot 4	10
2.4.3	Slot 5	11
2.4.4	Slot 6	12
2.4.5	Slot 7	13
2.5	FID Slots	14
2.5.1	Slot 0	14
2.5.2	Slot 1	15
2.5.3	Slot 2	16
A	Summary	17
A.1	Status	17
A.2	Comments	17

1 Front

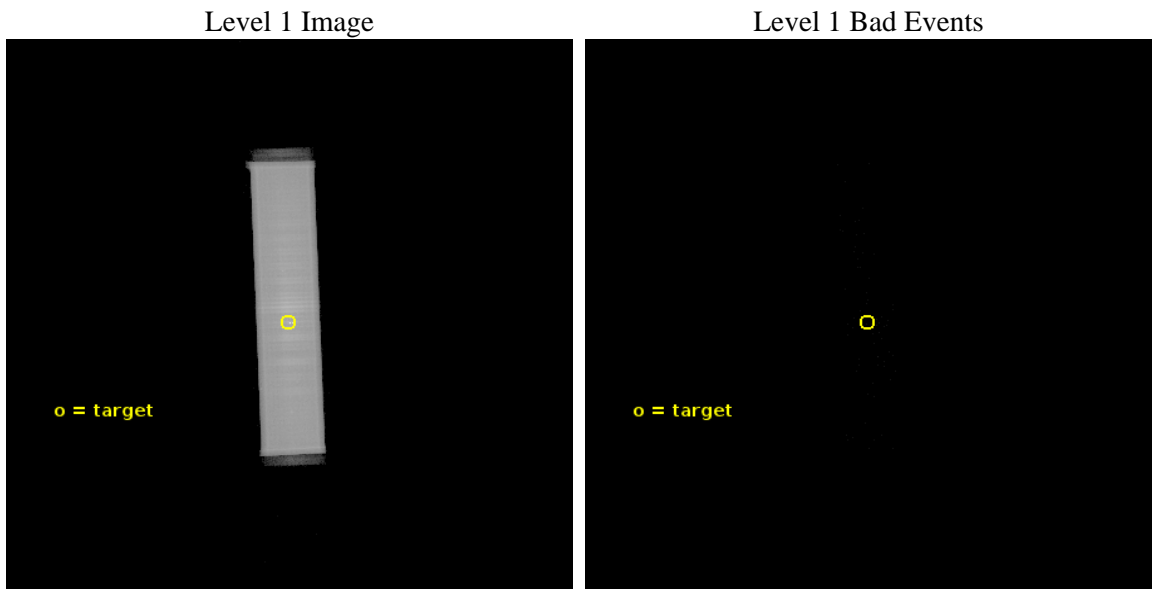
seq_num	500535	Sequence number
obs_id	6236	Observation id
title	Search for Sub-Millisecond Pulsars in 47 Tuc	Proposal title
observer	Prof. Robert Rutledge	Principal investigator
object	47 Tuc	Source name
ra_targ	6.021667	Observer's specified target RA [deg]
dec_targ	-72.080528	Observer's specified target Dec [deg]
ra_nom	6.0206087995127	Nominal RA [deg]
dec_nom	-72.085189125135	Nominal Dec [deg]
roll_nom	267.76748356081	Nominal Roll [deg]
revision	4	Processing version of data
ontime	51918.430526555	[s]
livetime	51699.270412206	Ontime multiplied by DTCOR
l2events	2240169	Number of level 2 events



2 OBI

2.1 OBI

2.1.1 Images



2.1.2 Parameters

obi_num	1	Obi number	sched_exp_time	51670.128000	[s] Scheduled observation exposure time
ascdsver	10	Processing system revision	ontime	51920.352405906	[s]
caldbver	4.5.7	 	l1events	3264914	Number of level 1 events
date	2013-06-29T04:26:31	Date and time of file creation			
revision	4	Processing version of data			

2.1.3 Events

Level 1 Events

	segment 1	segment 2	segment 3
level 1 events	3948	32609579	
rejected events	83	72276	7
rejected %	2%	2%	77%

2.2 Compared Parameters

Parameter	Planned	Actual
Instrument	HRC	HRC
Detector	HRC-S	HRC-S
Grating	NONE	NONE
Data mode	OBSERVING	OBSERVING
Observation mode	POINTING	POINTING
[deg] Pointing RA	5.973374	6.020608799512672
[deg] Pointing Dec	-72.060563	-72.08518912513524
[deg] Pointing Roll	267.655212	267.7674835608066
[mm] SIM focus pos	-1.533336	-1.526339935833849
[mm] SIM defocus	7.710433287538843e-07	0.006996703570447904
[mm] SIM translation stage pos	250.455976	250.466033080201
[mm] SIM translation stage offset	0	-0.01005468664627074
[s] Observation start time (MET)	252849136.184000	252847812.58388
Observation start date	2006-01-05T11:51:11	2006-01-05T11:30:12
[s] Observation end time (MET)	252900806.184000	252902642.39892
Observation end date	2006-01-06T02:12:21	2006-01-06T02:44:02

Parameter	Planned	Actual
Obspar format version number	7	7
Obspar file type	PREDICTED	ACTUAL
Obspar update status	NONE	UPDATED

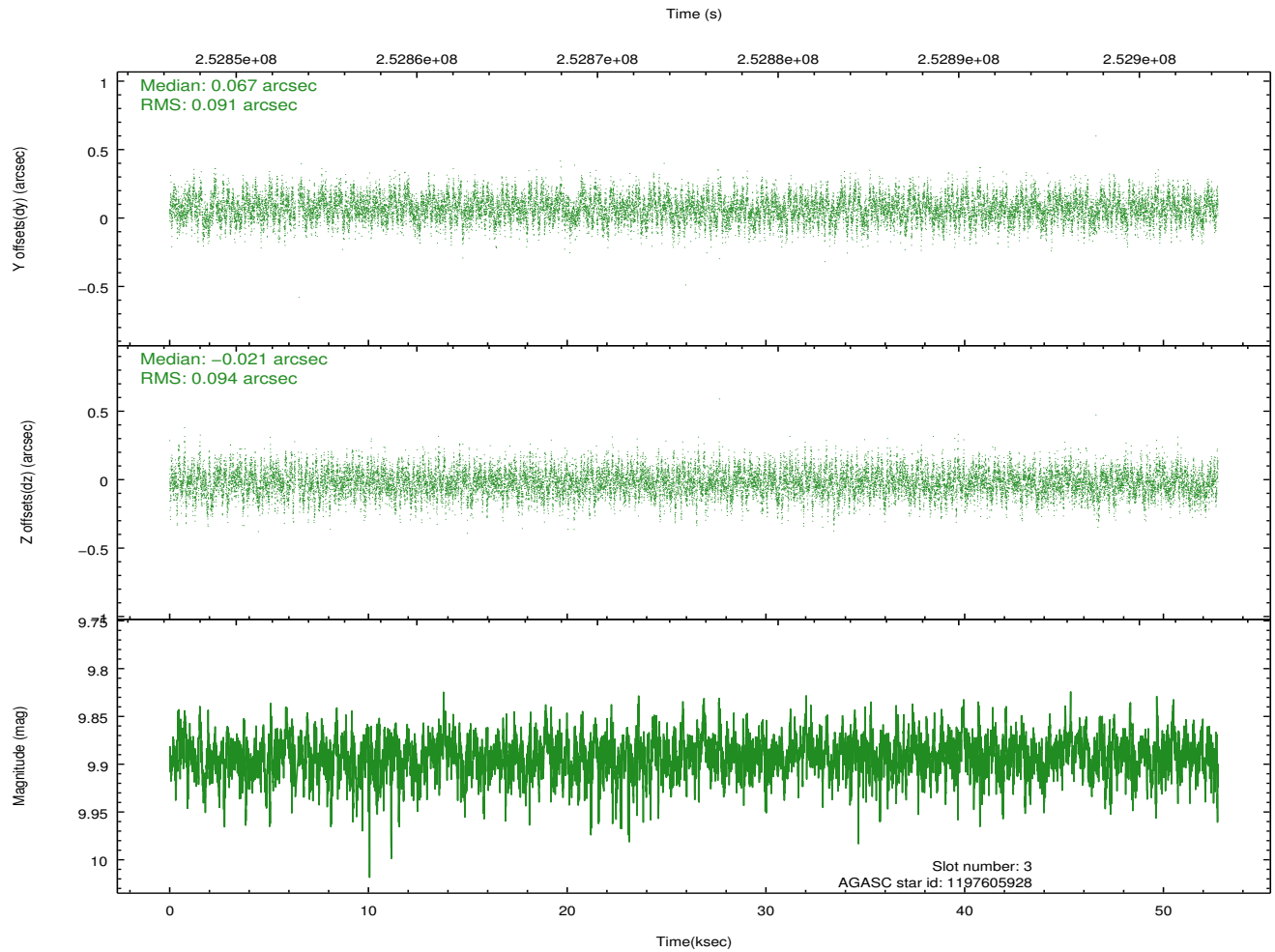
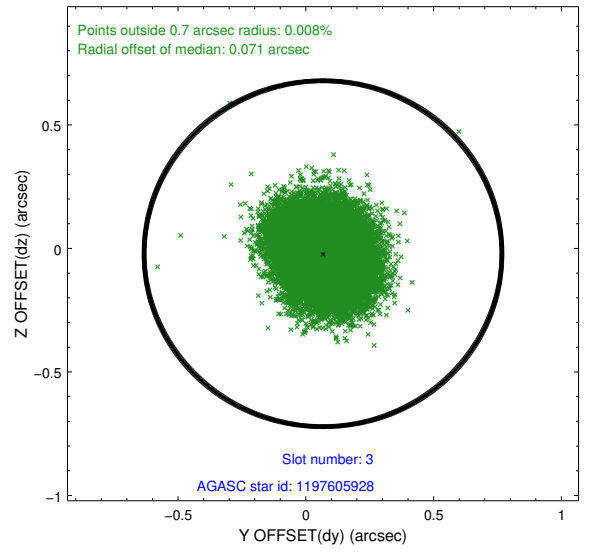
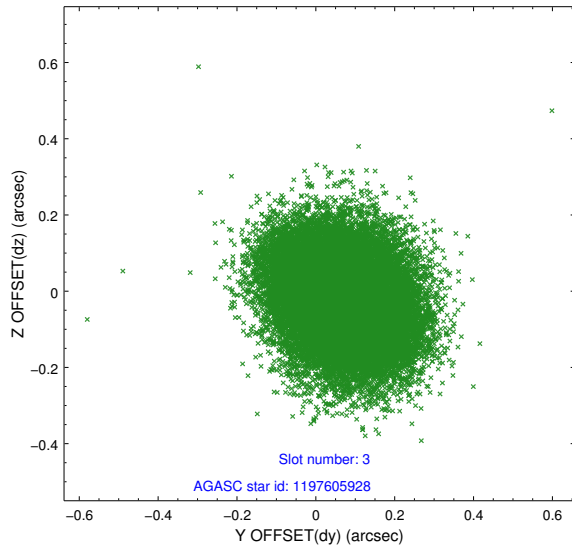
2.3 Aspect

Slot Statistics

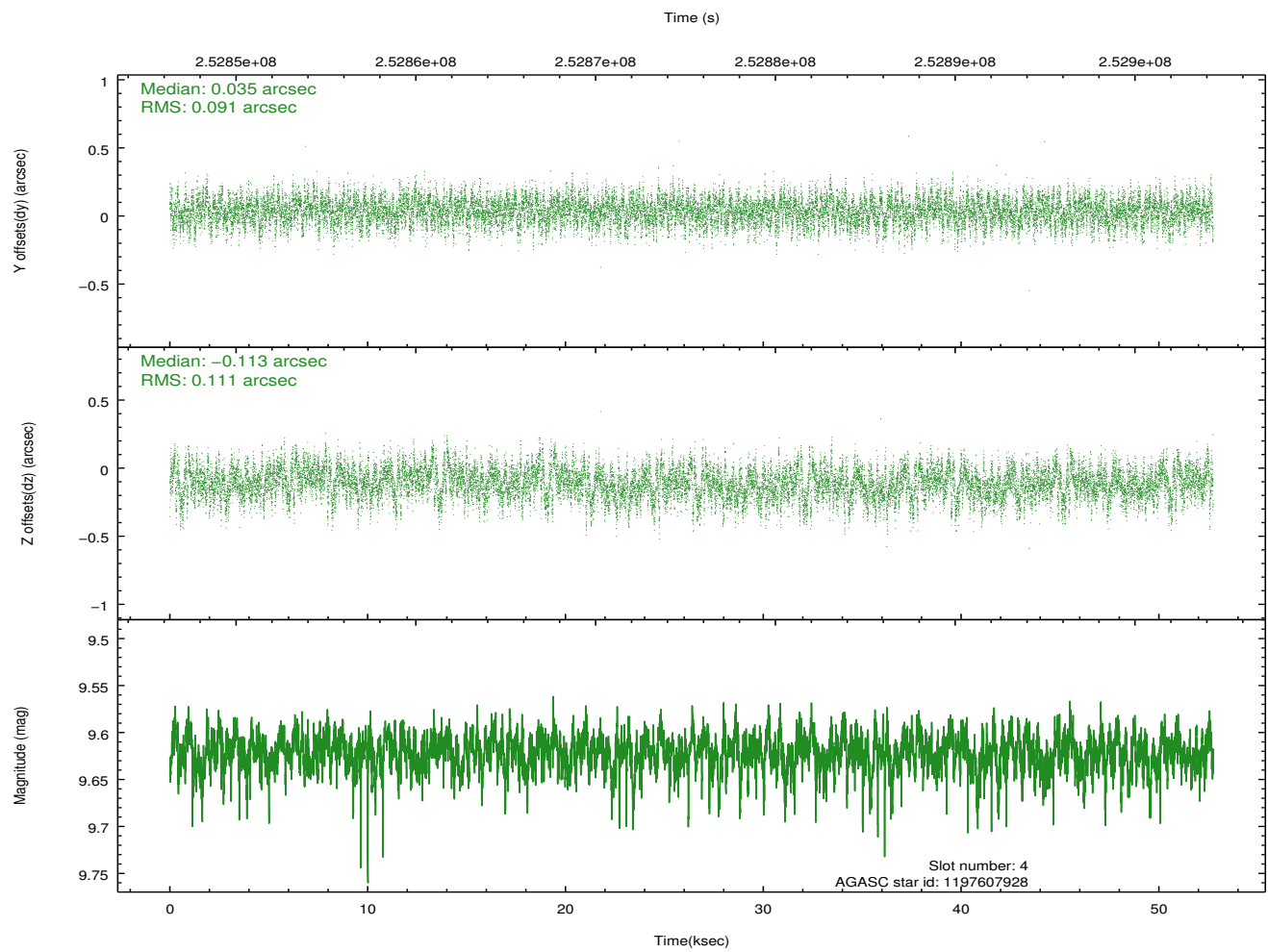
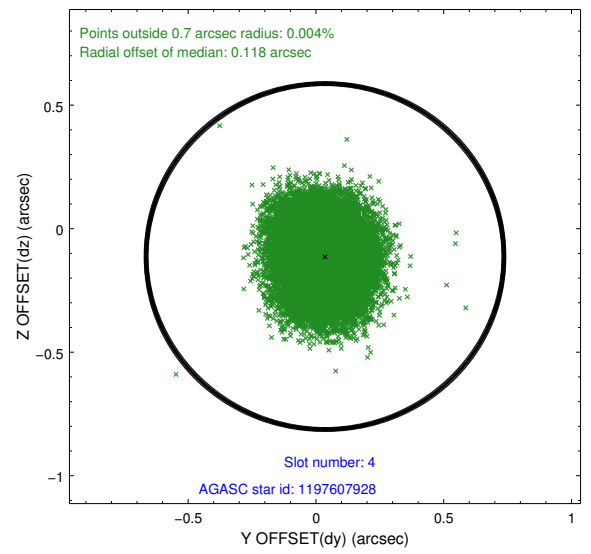
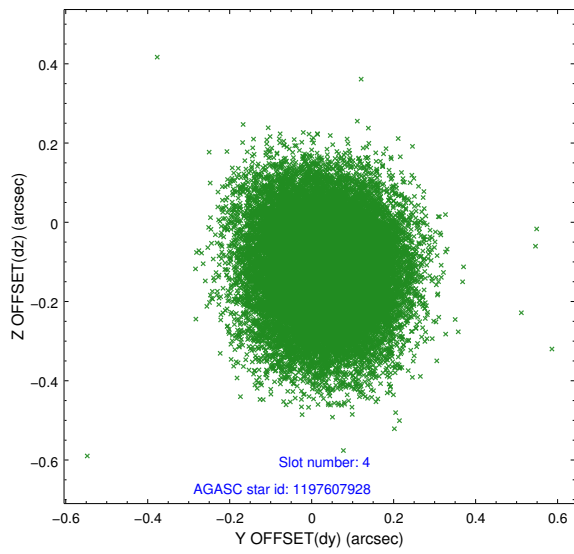
slot	status	id	mag	n_pts	med_dy	med_dz	dr1	dr2	ra	dec	mean_y	mean_z
0	FID	HRC-S-1	7.02	12865	0.136	-0.126	0.012	0.053	0.000000	0.000000	-1163.72	-461.45
1	FID	HRC-S-2	7.02	12865	0.128	-0.102	0.008	0.016	0.000000	0.000000	1235.84	-454.07
2	FID	HRC-S-3	7.03	12863	0.126	-0.074	0.013	0.051	0.000000	0.000000	-1166.37	568.10
3	GUIDE	1197605928	9.89	25601	0.067	-0.021	0.139	0.227	4.361277	-72.423732	1402.23	-1696.12
4	GUIDE	1197607928	9.62	25691	0.035	-0.113	0.153	0.248	7.837743	-72.165759	326.25	2070.47
5	GUIDE	1197621088	9.91	25705	-0.007	-0.035	0.153	0.252	3.823480	-72.180366	570.70	-2345.23
6	GUIDE	1197617752	10.26	25671	0.106	0.254	0.195	0.321	4.480632	-72.284129	892.02	-1599.57
7	GUIDE	1197625128	8.59	25673	-0.200	-0.073	0.098	0.160	3.920586	-71.426112	-2145.42	-2443.65

2.4 Star Slots

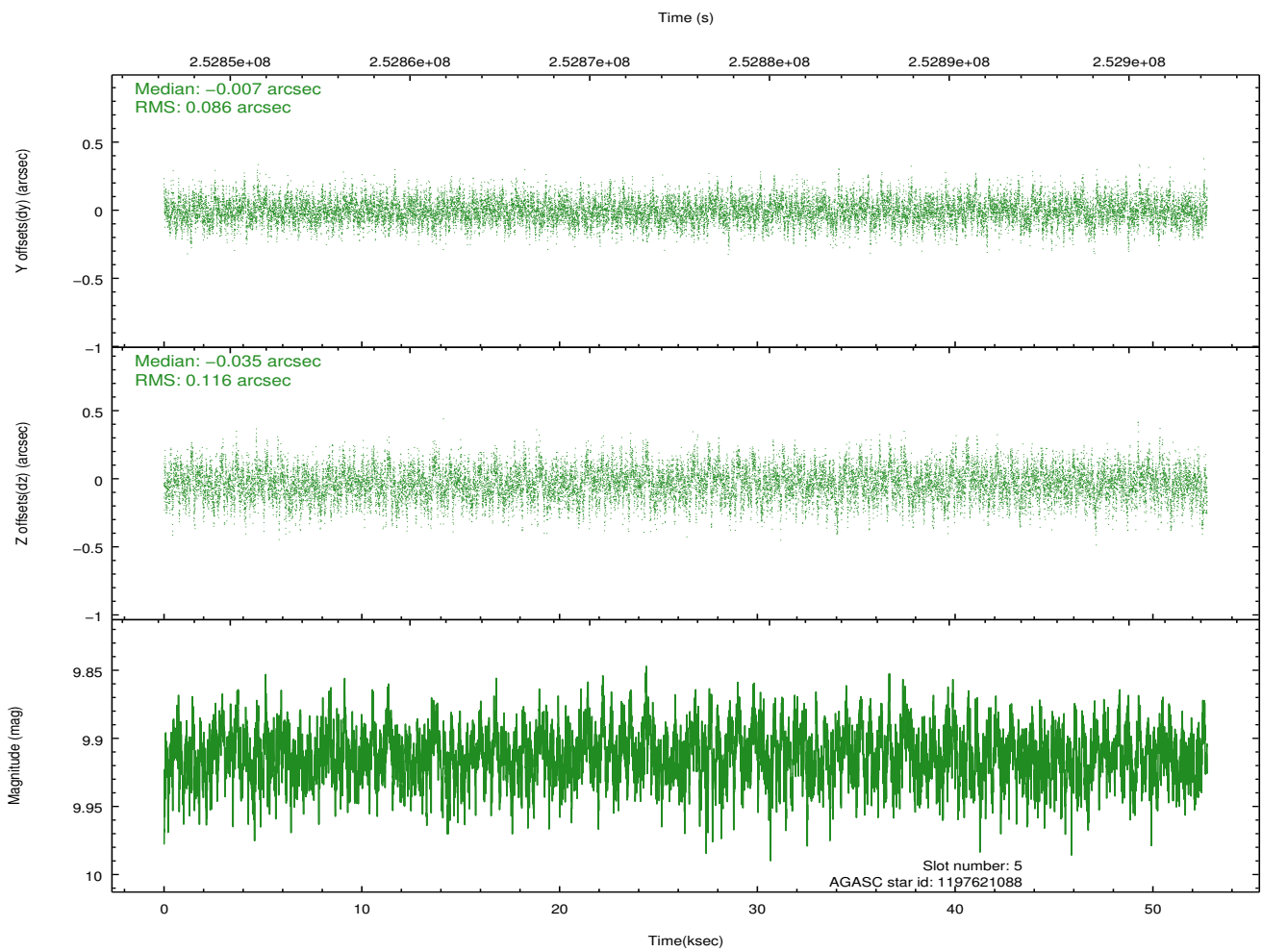
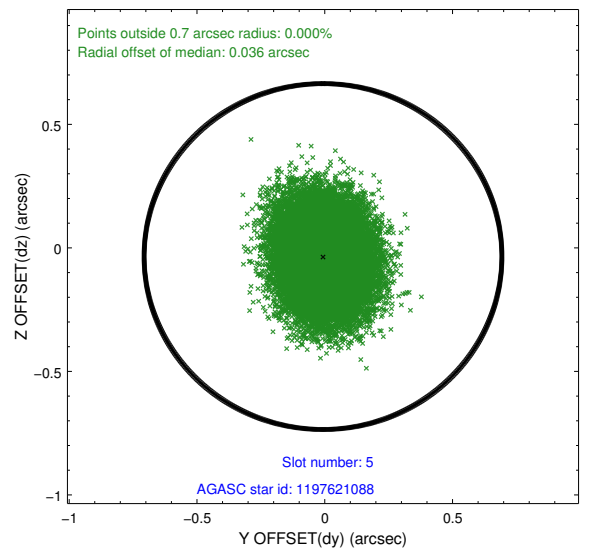
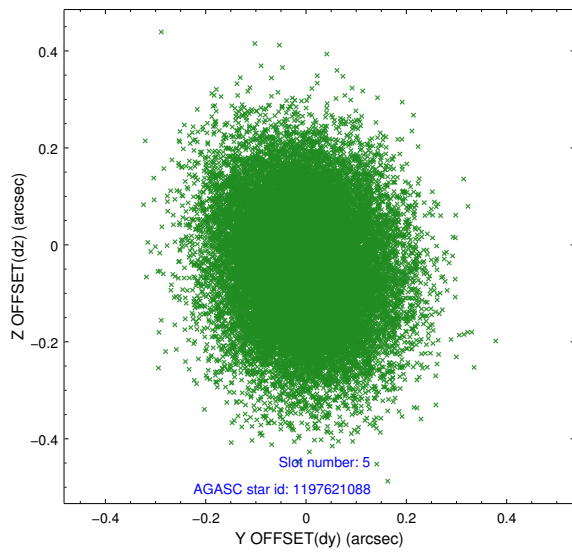
2.4.1 Slot 3



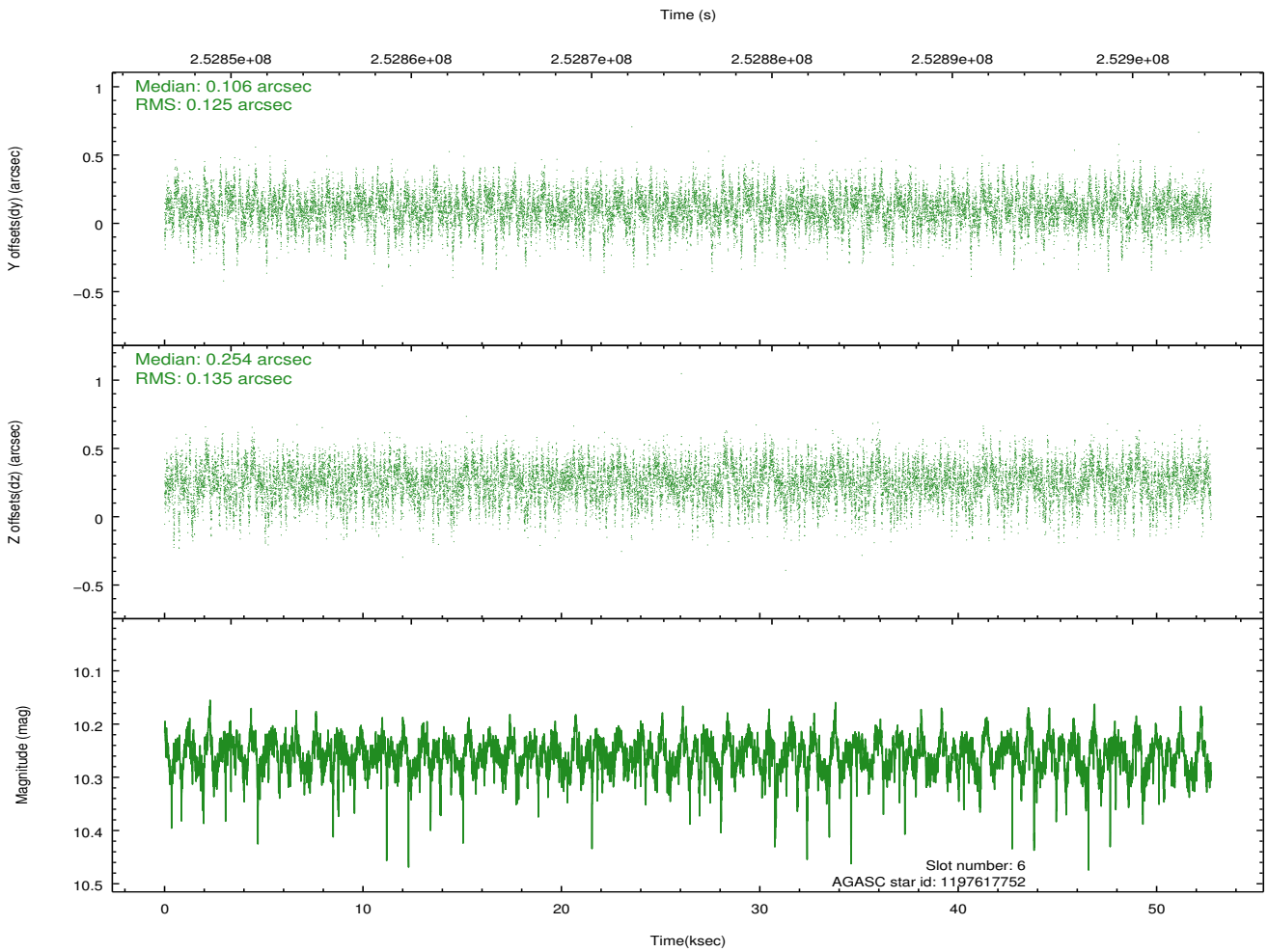
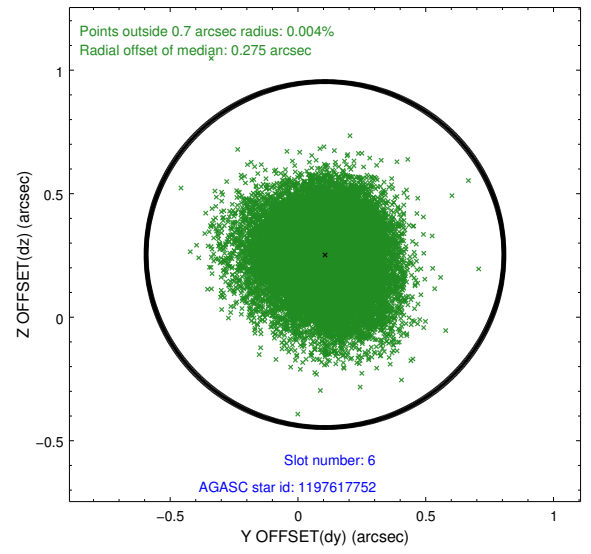
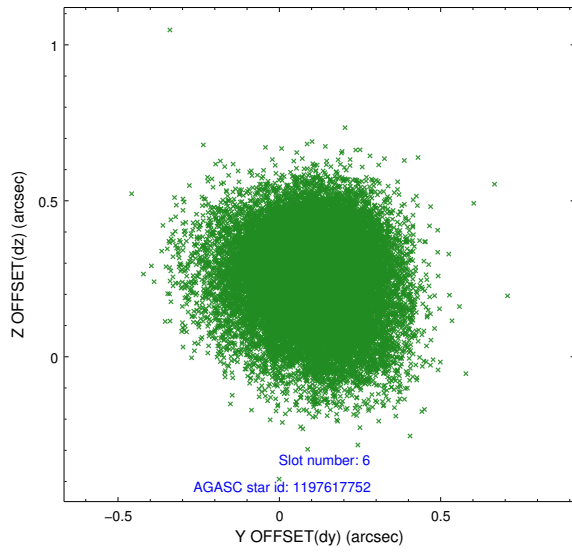
2.4.2 Slot 4



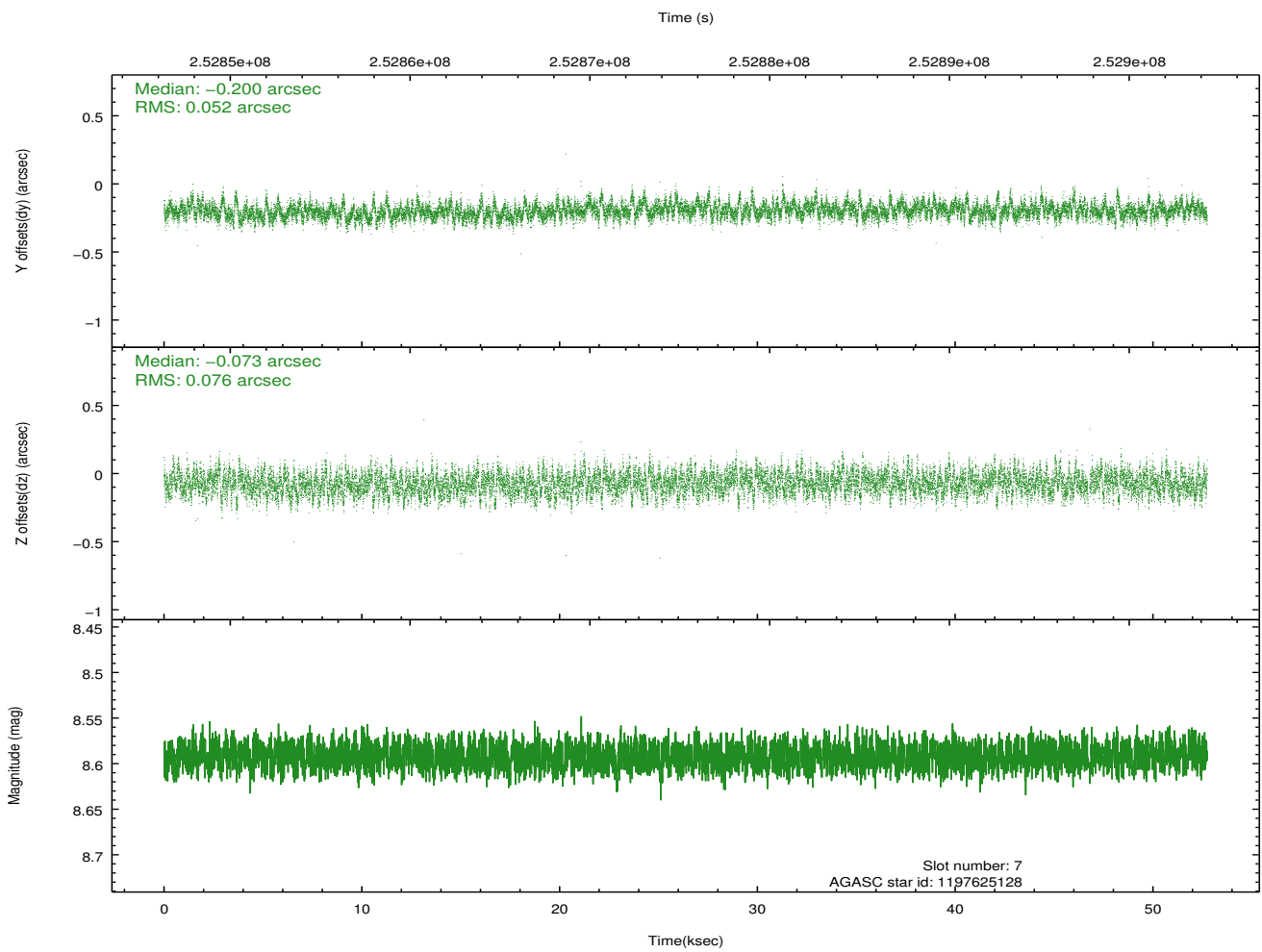
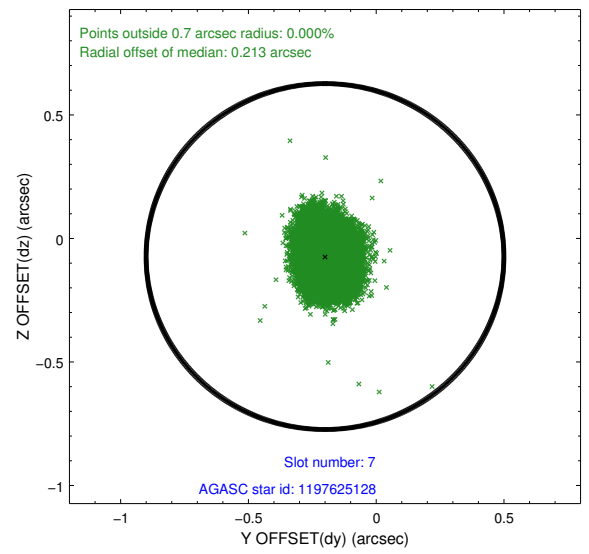
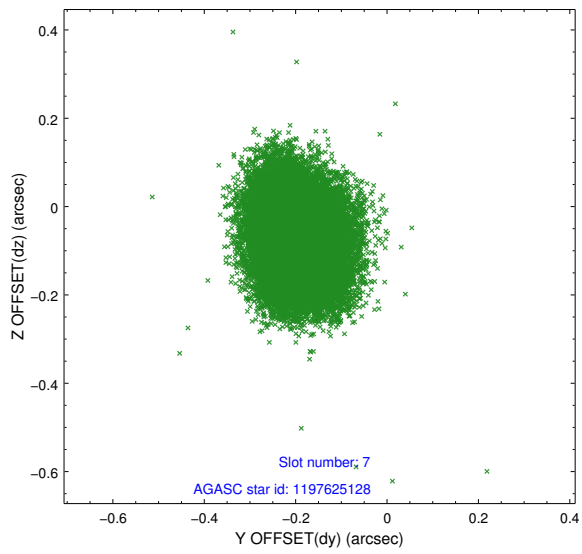
2.4.3 Slot 5



2.4.4 Slot 6

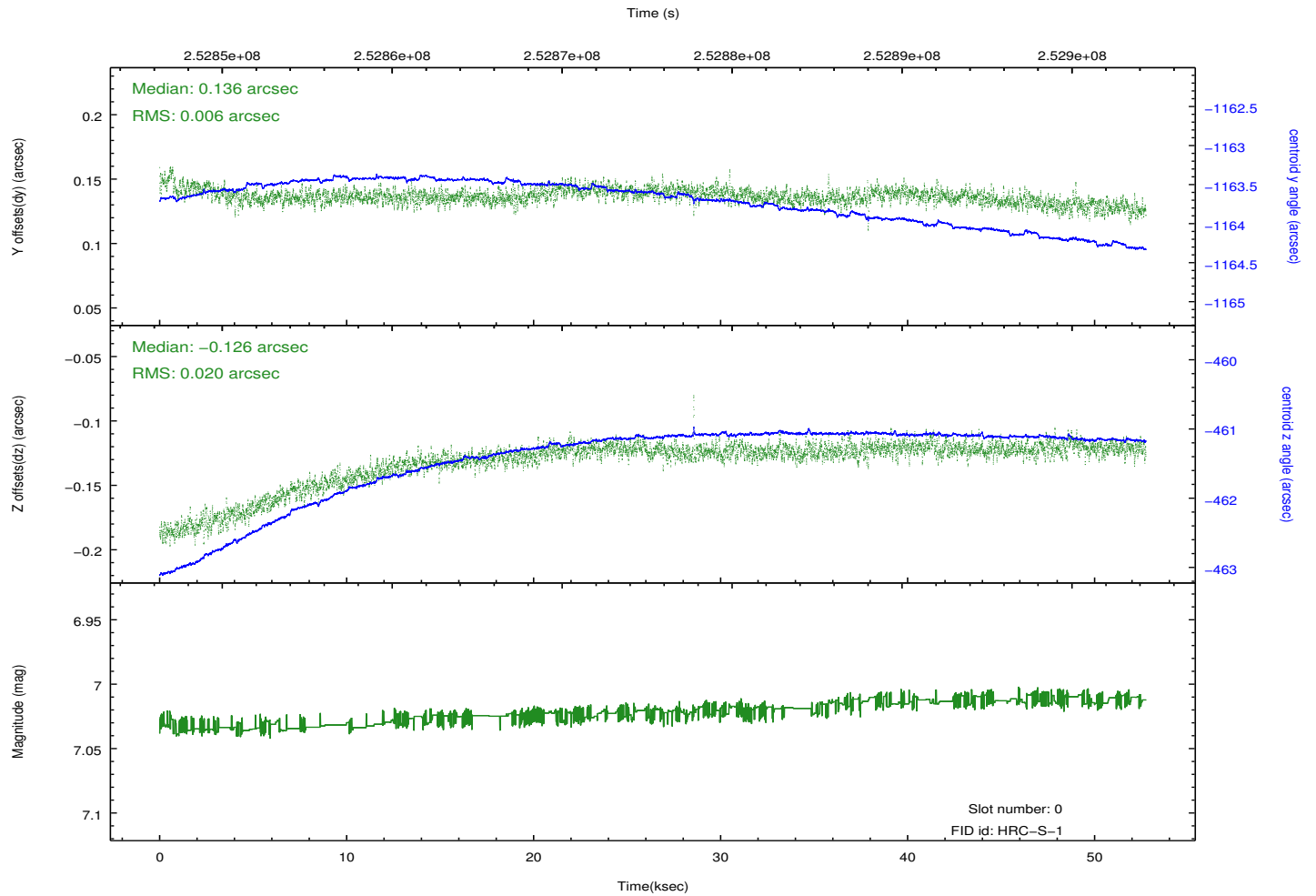
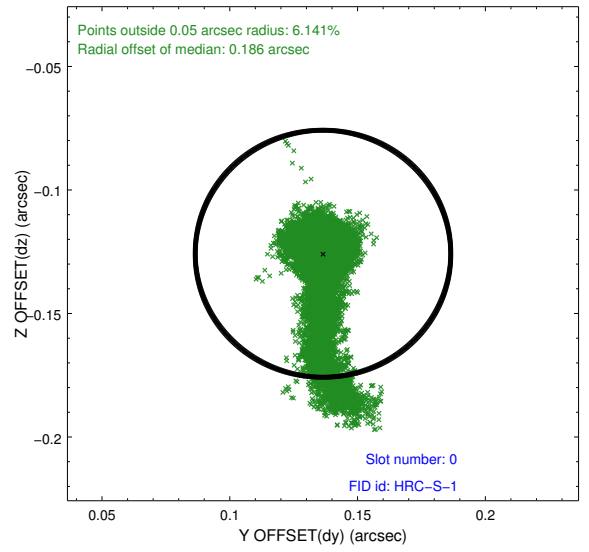
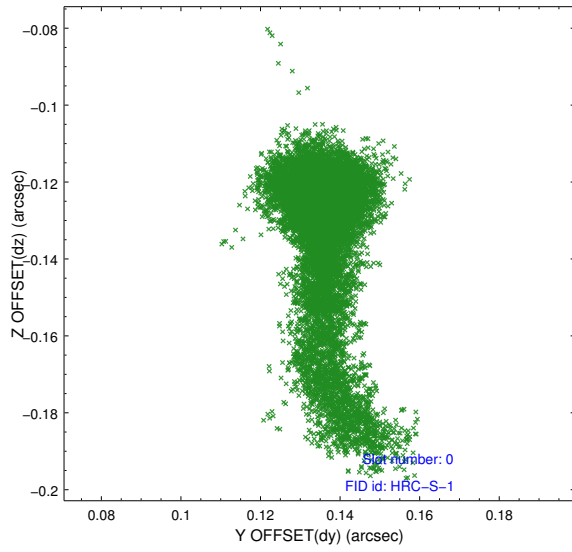


2.4.5 Slot 7

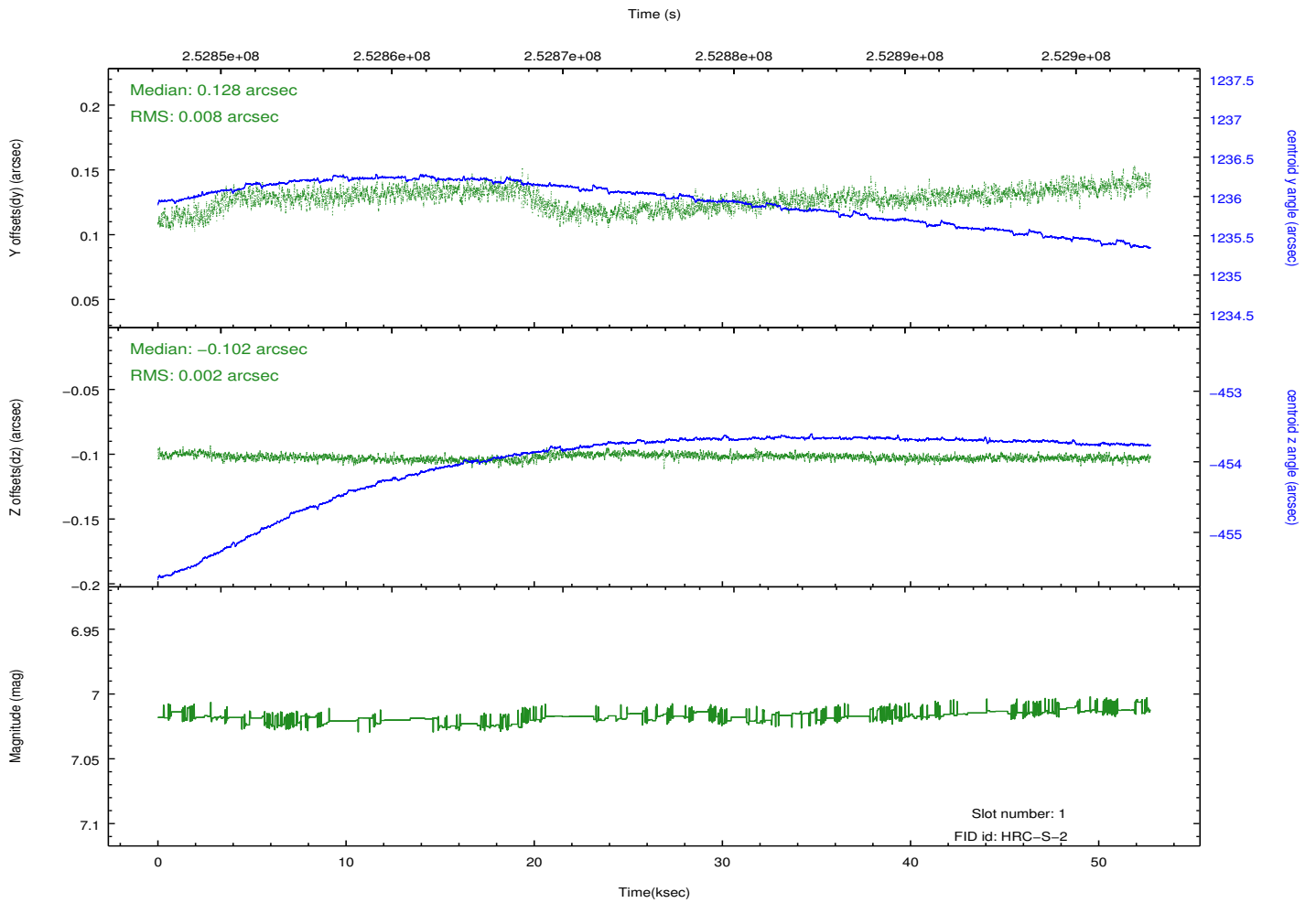
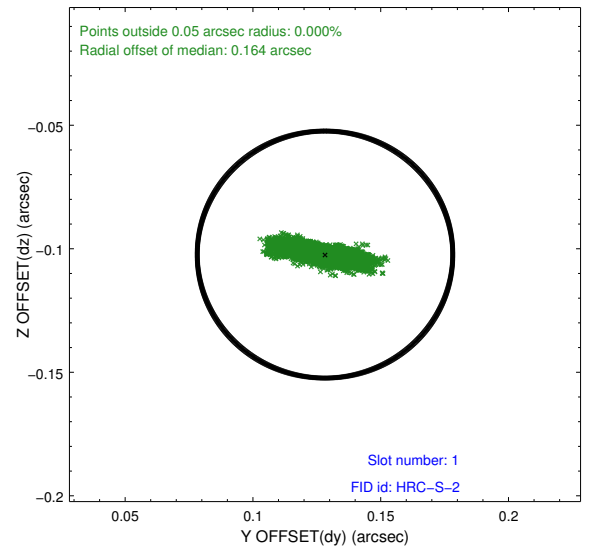
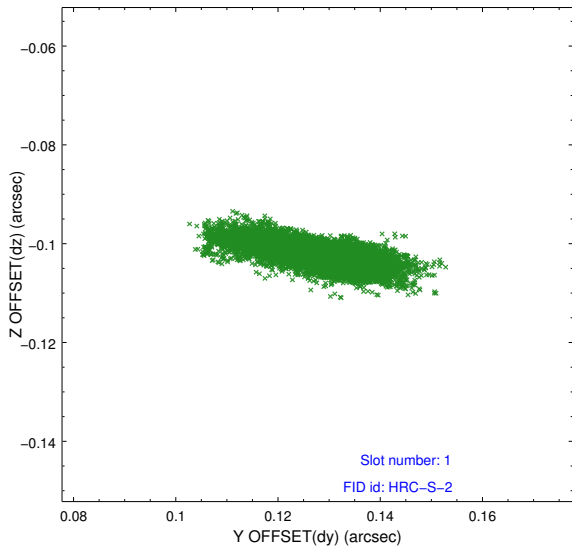


2.5 FID Slots

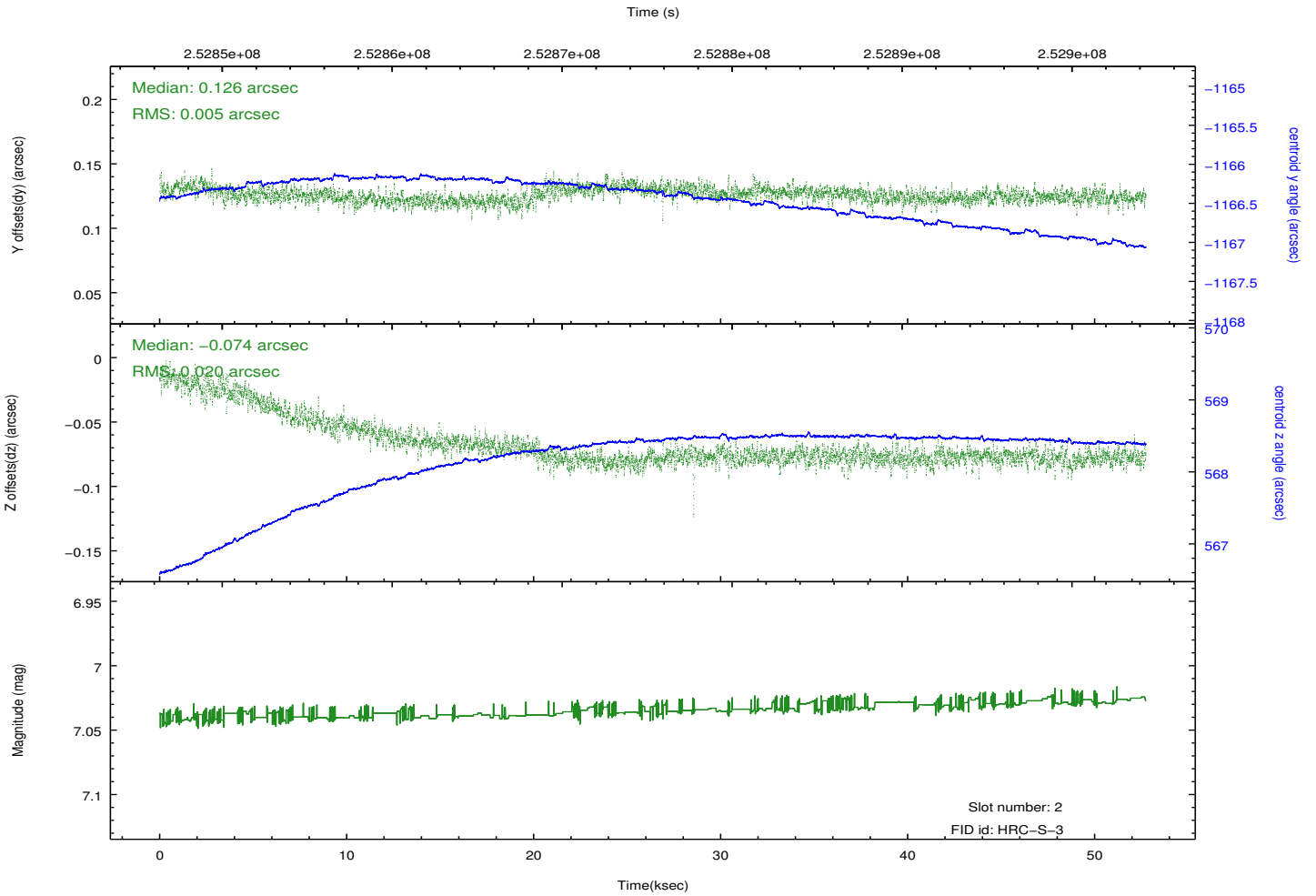
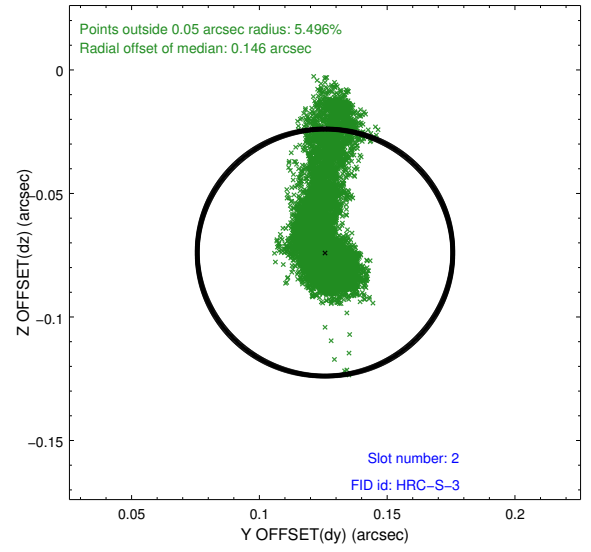
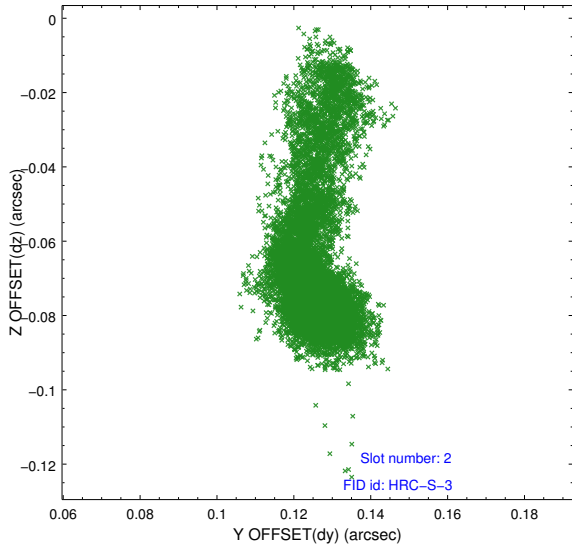
2.5.1 Slot 0



2.5.2 Slot 1



2.5.3 Slot 2



A Summary

A.1 Status

V&V Scientist	Beth Sundheim
V&V Date (YYYY-MM-DD)	2013.07.01
V&V Edition	1
V&V Disposition and Status	OK
V&V Charge Time	51.9183

A.2 Comments