

V&V Reference Report

L2 ASCDS Version : 8.2.1

Observation 62426 - L2 Version 3
Chandra X-Ray Center

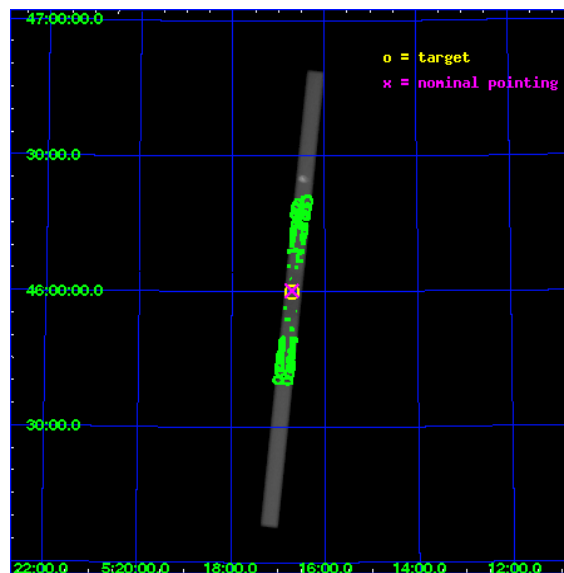
L2 Processing Date : Jan 13 2010

Contents

1	Front	2
2	OBI	3
2.1	OBI	3
2.1.1	Images	3
2.1.2	Parameters	4
2.1.3	Events	4
2.2	Compared Parameters	5
2.3	Aspect	6
2.4	Star Slots	9
2.4.1	Slot 3	9
2.4.2	Slot 4	10
2.4.3	Slot 5	11
2.4.4	Slot 6	12
2.4.5	Slot 7	13
2.5	FID Slots	14
2.5.1	Slot 0	14
2.5.2	Slot 1	15
2.5.3	Slot 2	16
3	Point Sources	17
A	Summary	18
A.1	Status	18
A.2	Comments	18

1 Front

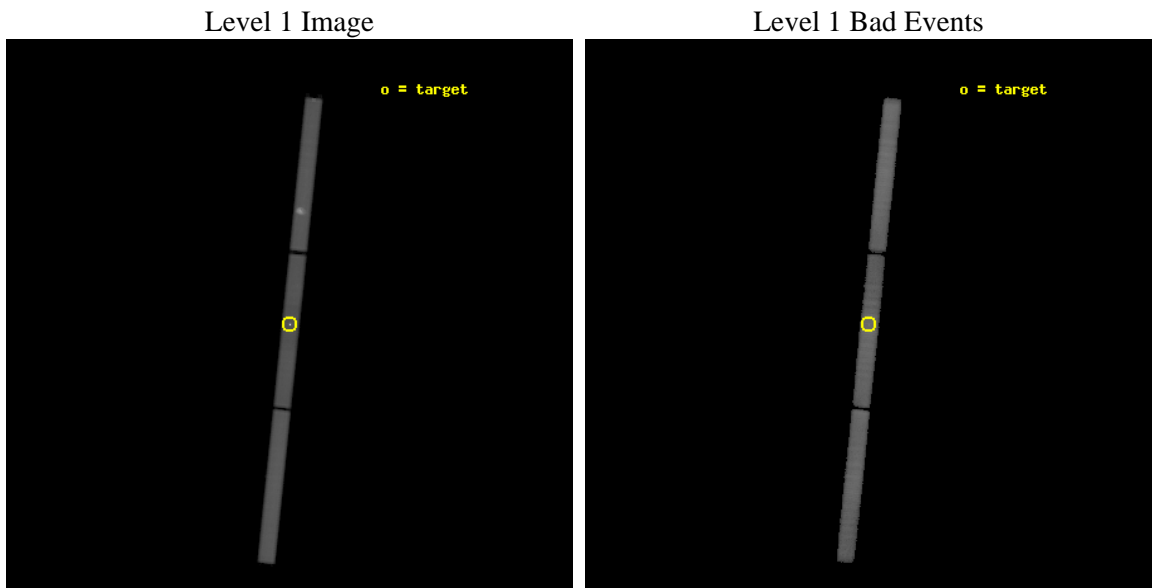
seq_num	290133	Sequence number
obs_id	62426	Observation id
title	GRATINGS CALIBRATION OBSERVATION OF AN EMISSION LINE SOURCE: CAPELLA	
observer	Dr. CXC Calibration	Principal investigator
object	CAPELLA	Source name
ra_targ	79.17625	Observer's specified target RA
dec_targ	45.997889	Observer's specified target Dec
ra_nom	79.176315397899	Nominal RA
dec_nom	46.003369374321	Nominal Dec
roll_nom	95.86729447665	Nominal Roll
revision	3	Processing version of data
ontime	25715.200921983	[s]
livetime	25201.740634638	Overtime multiplied by DTCOR
l2events	2934073	Number of level 2 events



2 OBI

2.1 OBI

2.1.1 Images



2.1.2 Parameters

obi_num	0	Obi number	sched_exp_time	85400.000000	Scheduled observation exposure time
ascdsver	8.2.1	Processing system revision	ontime	25715.200922981	[s]
caldbver	4.1.5	 	ll events	3860633	Number of level 1 events
date	2010-01-13T13:58:37	Date and time of file creation			
revision	3	Processing version of data			

2.1.3 Events

Level 1 Events

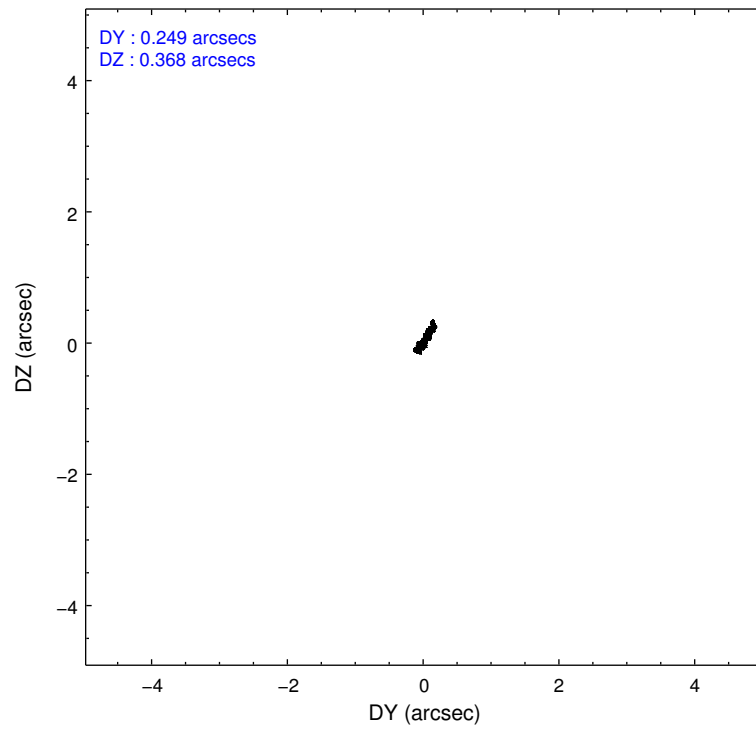
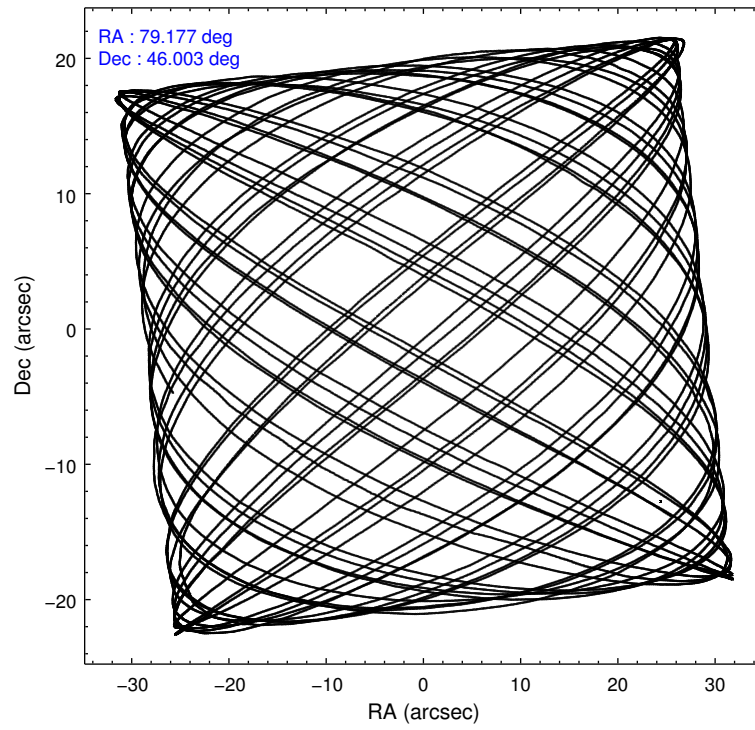
	segment 1	segment 2	segment 3
level 1 events	1241817	1382185	1236631
rejected events	204625	208589	271835
rejected %	16%	15%	21%

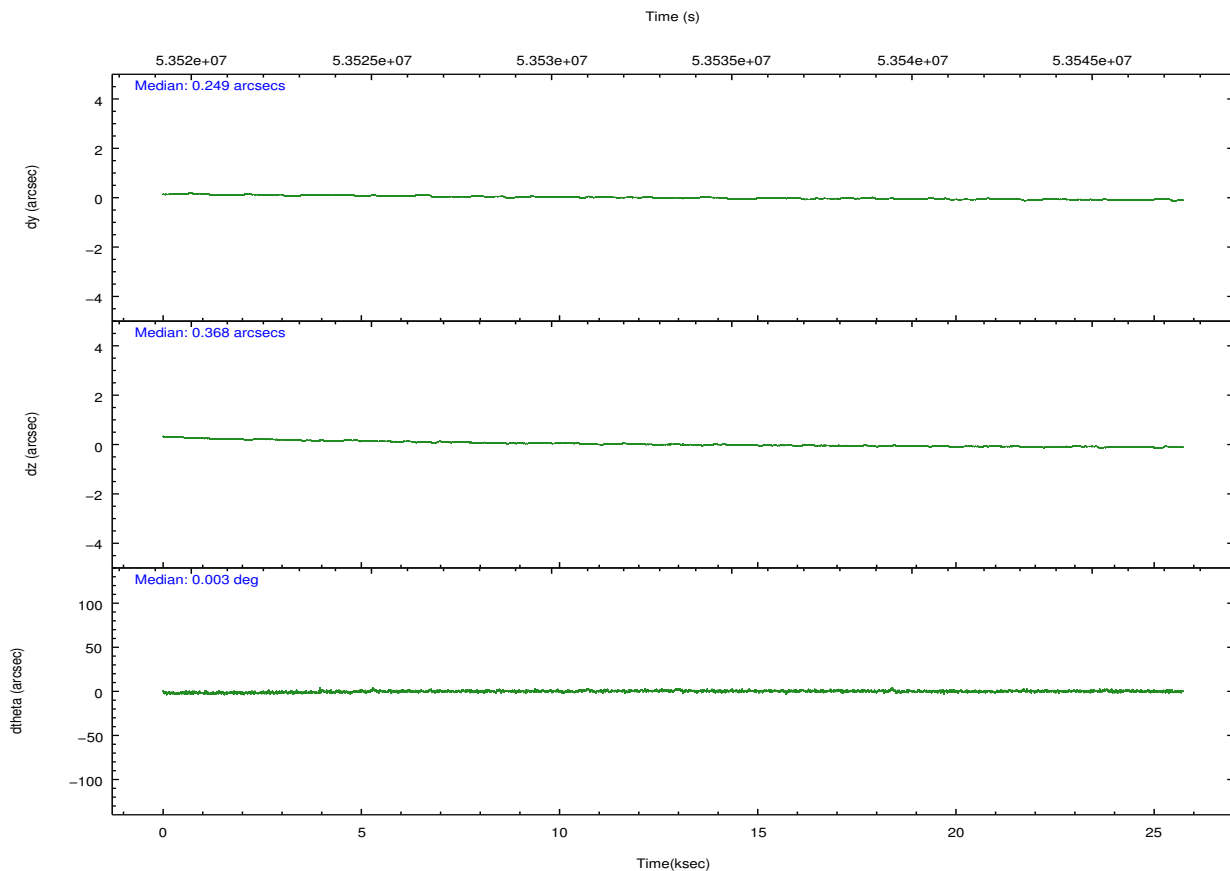
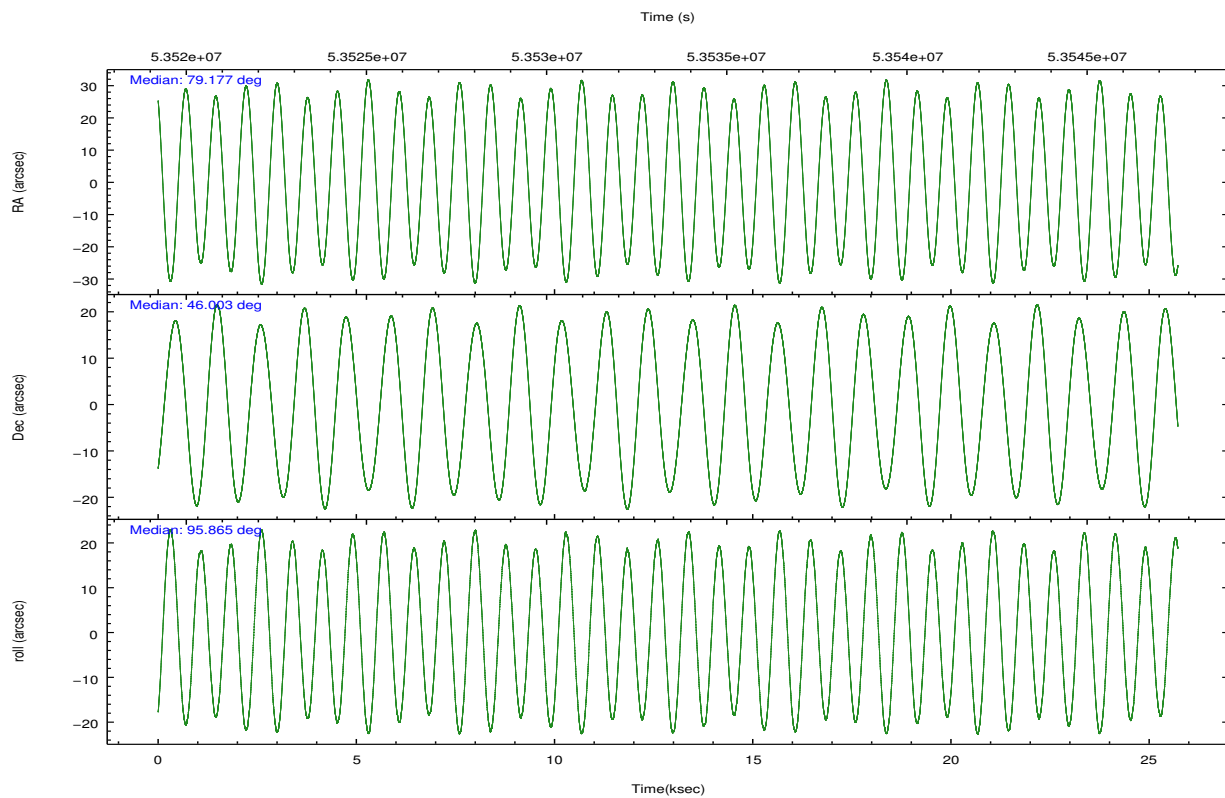
2.2 Compared Parameters

Parameter	Planned	Actual
Instrument	HRC	HRC
Detector	HRC-S	HRC-S
Grating	NONE	NONE
Data mode	OBSERVING	OBSERVING
Observation mode	POINTING	POINTING
Pointing RA	79.201486	79.17631539789851
Pointing Dec	45.980233	46.00336937432133
Pointing Roll	95.781851	95.86729447664968
SIM focus pos (mm)	-1.429586	-1.27598394818995
SIM defocus (mm)	0.1037507710433287	0.2573526912143473
SIM translation stage pos (mm)	250.455976	250.466033080201
SIM translation stage offset (mm)	0	-0.01005468664627074
Observation start time	53496064.184000	53520508.410343
Observation start date	1999-09-12T04:00:00	1999-09-12T10:48:28
Observation end time	53581464.184000	53546235.911267
Observation end date	1999-09-13T03:43:20	1999-09-12T17:57:15

Parameter	Planned	Actual
Obspar format version number	6	6
Obspar file type	PREDICTED	ACTUAL
Obspar update status	NONE	UPDATED

2.3 Aspect



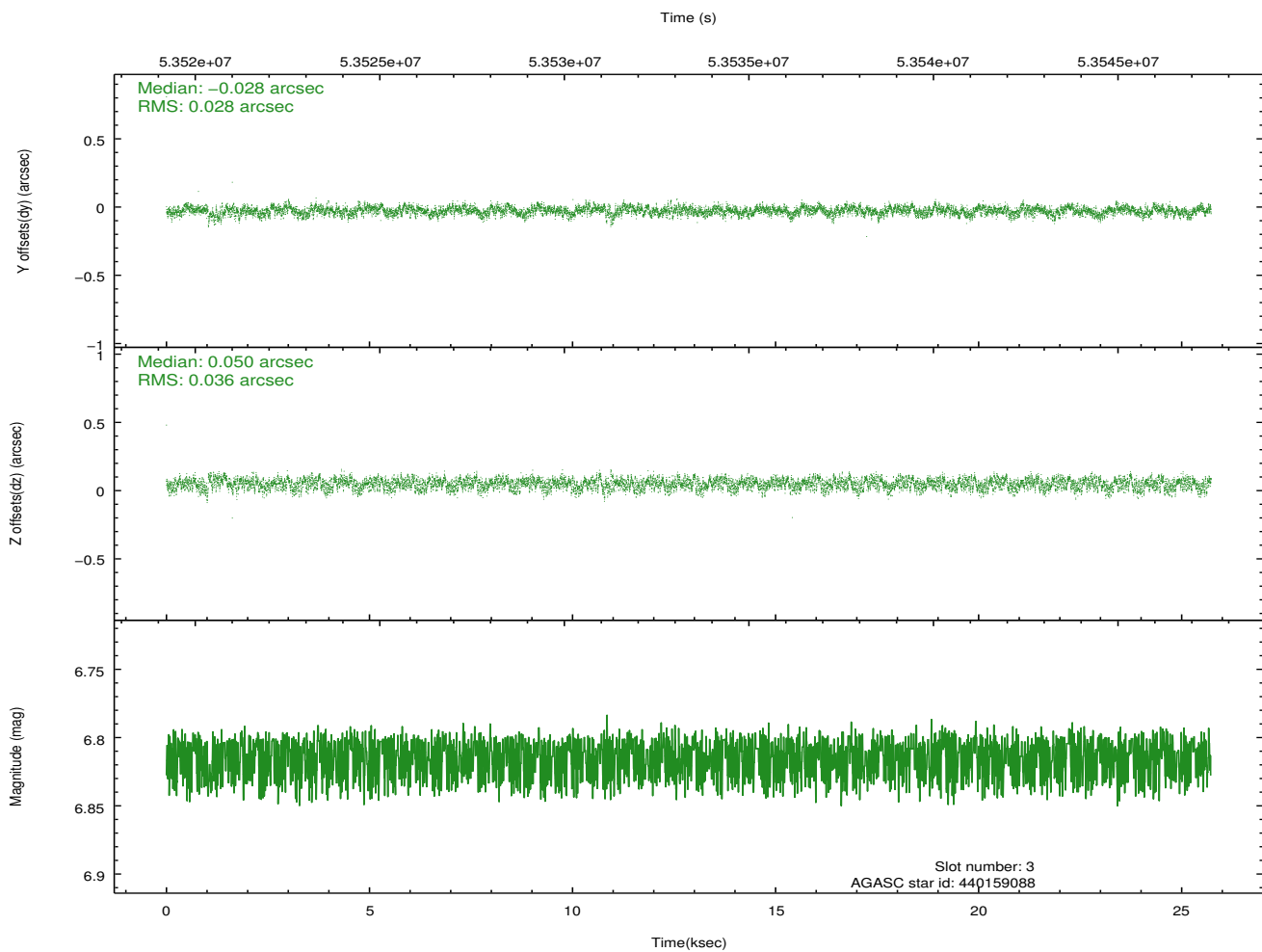
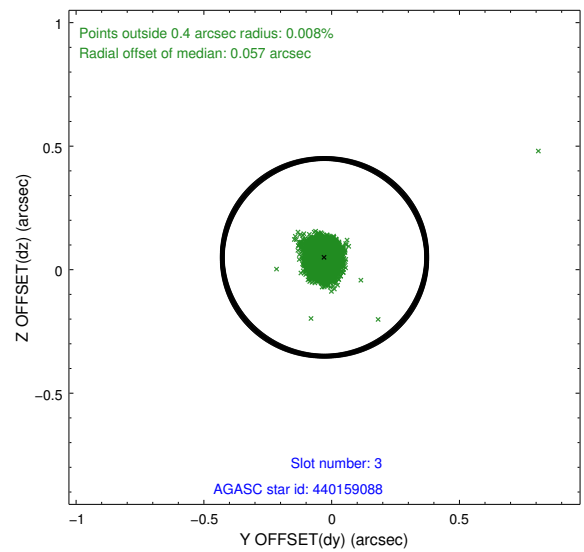
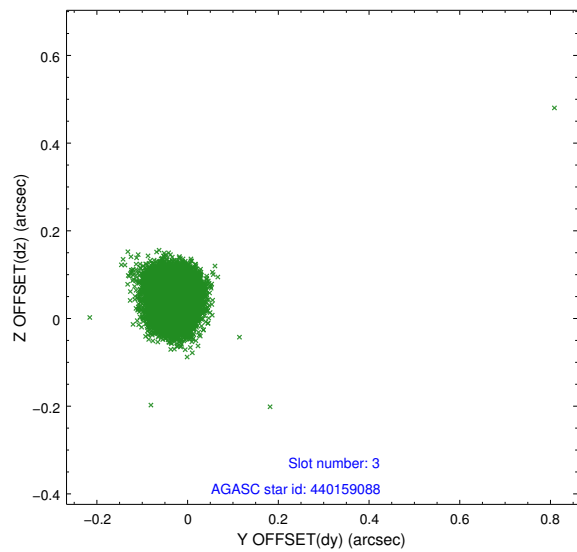


Slot Statistics

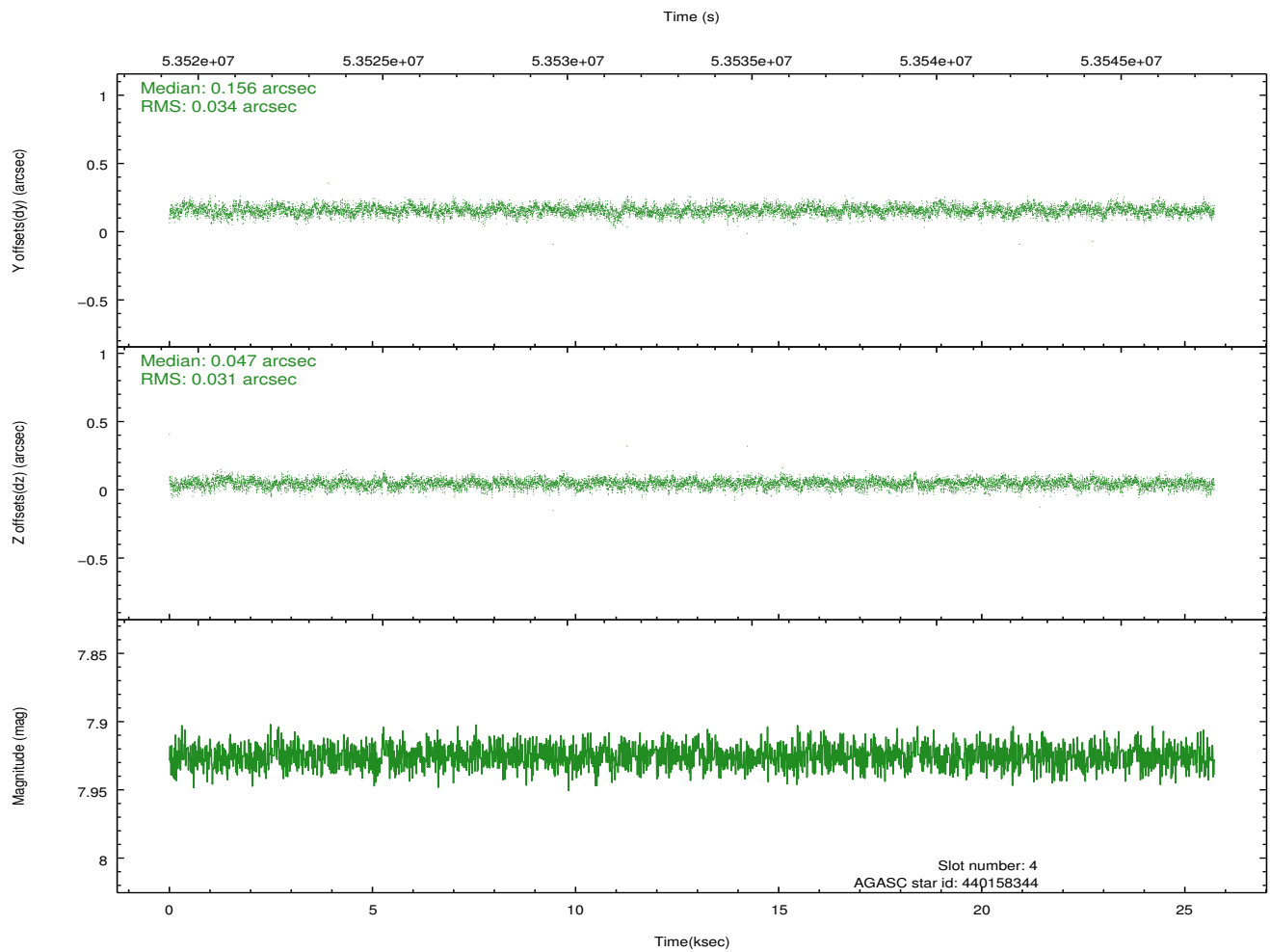
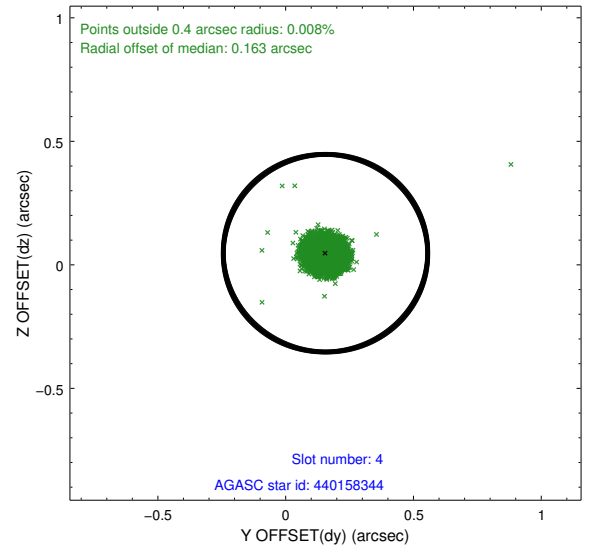
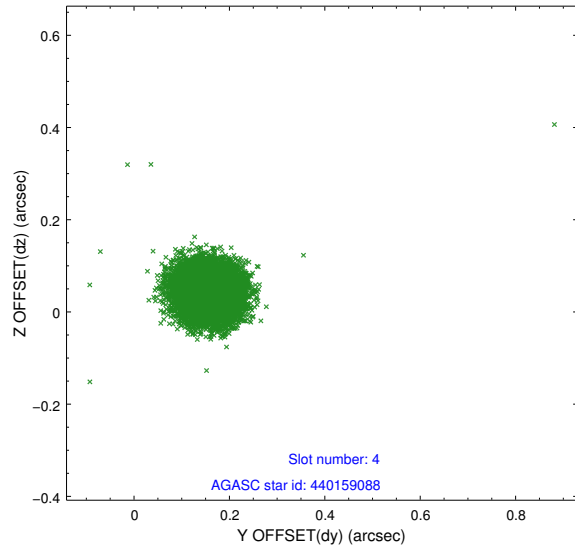
slot	status	id	mag	n_pts	med_dy	med_dz	dr1	dr2	ra	dec	mean_y	mean_z
0	FID	HRC-S-1	6.99	12550	0.153	-0.091	0.009	0.019	0.000000	0.000000	-1154.30	-448.59
1	FID	HRC-S-3	7.01	12549	0.119	-0.096	0.008	0.014	0.000000	0.000000	-1157.04	580.91
2	FID	HRC-S-4	6.99	12550	0.117	-0.110	0.007	0.014	0.000000	0.000000	1243.98	583.29
3	GUIDE	440159088	6.81	12549	-0.028	0.050	0.048	0.076	79.453034	46.128063	467.94	-677.45
4	GUIDE	440158344	7.93	12545	0.156	0.047	0.048	0.077	79.344888	45.394991	-2131.43	-147.94
5	GUIDE	440149808	8.44	12546	-0.065	-0.096	0.057	0.091	78.873930	46.405955	1608.83	654.99
6	GUIDE	438438936	8.97	12541	-0.173	-0.096	0.081	0.131	78.241026	46.550197	2295.94	2158.36
7	GUIDE	440145944	9.09	12540	0.114	0.098	0.080	0.127	80.083717	45.428844	-2186.20	-2018.12

2.4 Star Slots

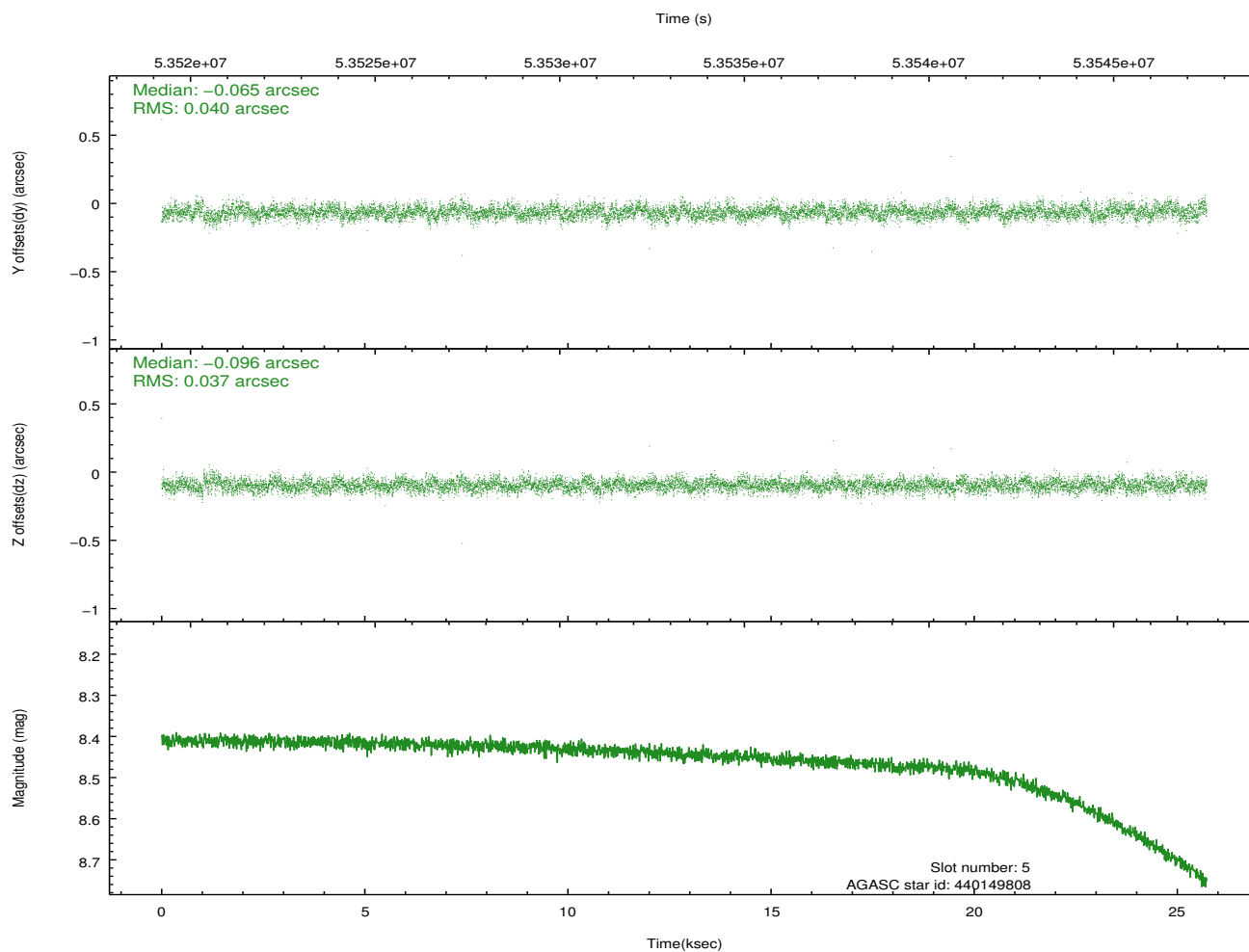
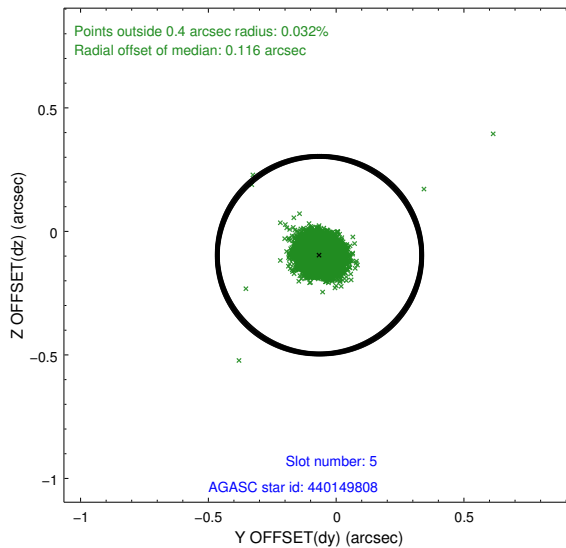
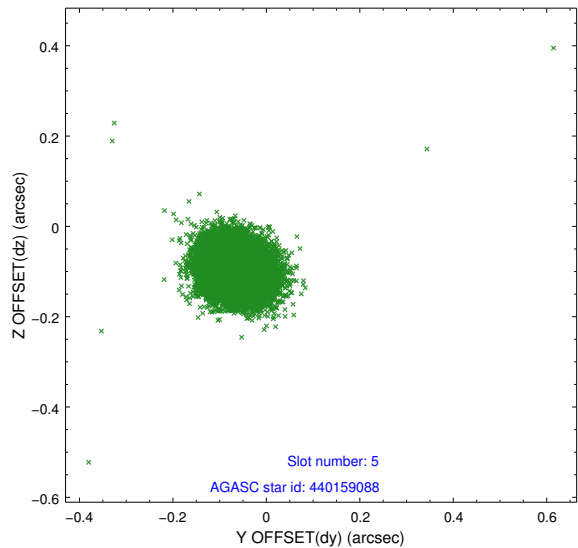
2.4.1 Slot 3



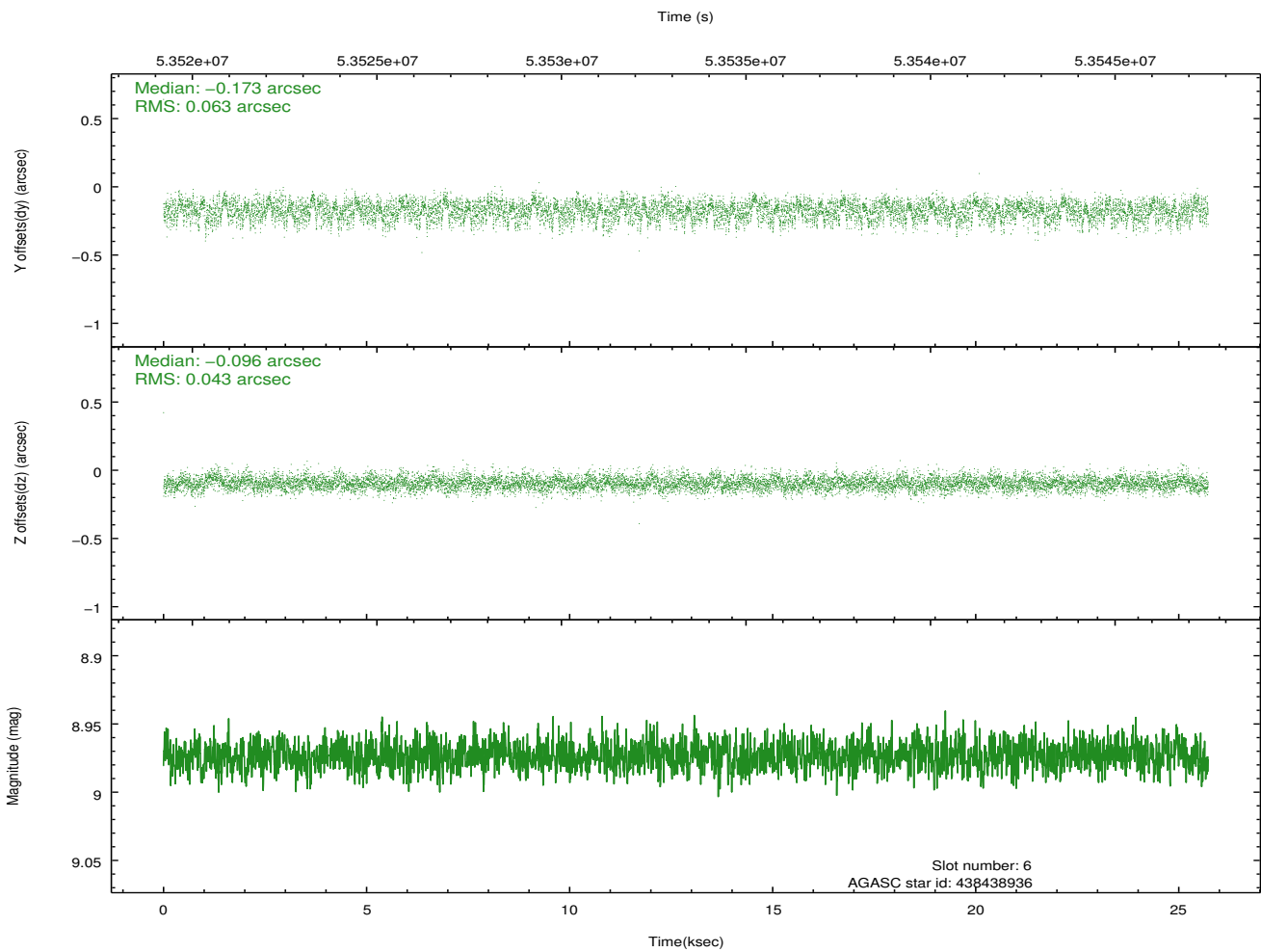
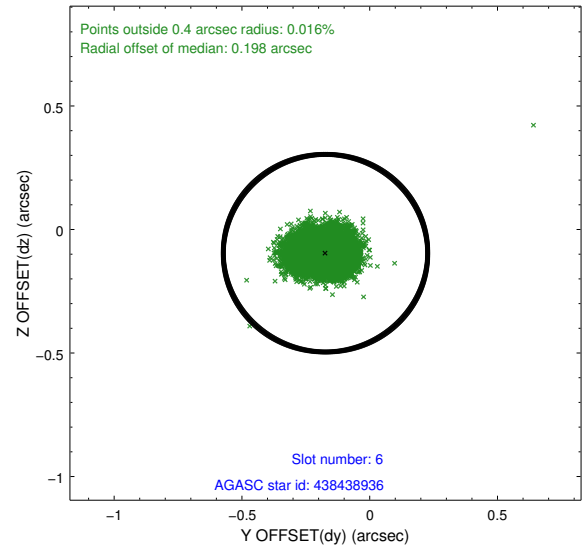
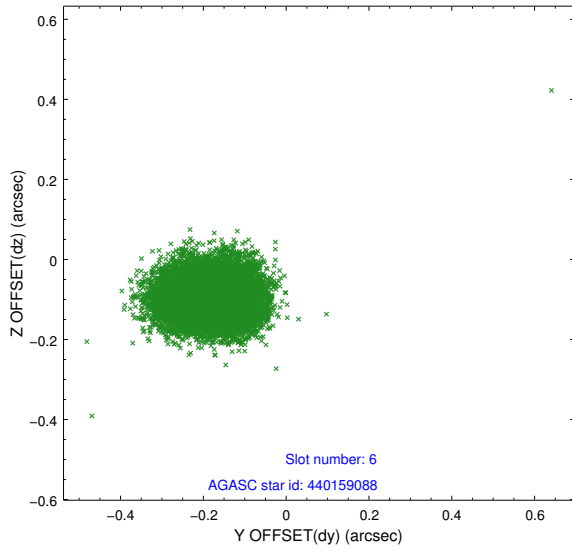
2.4.2 Slot 4



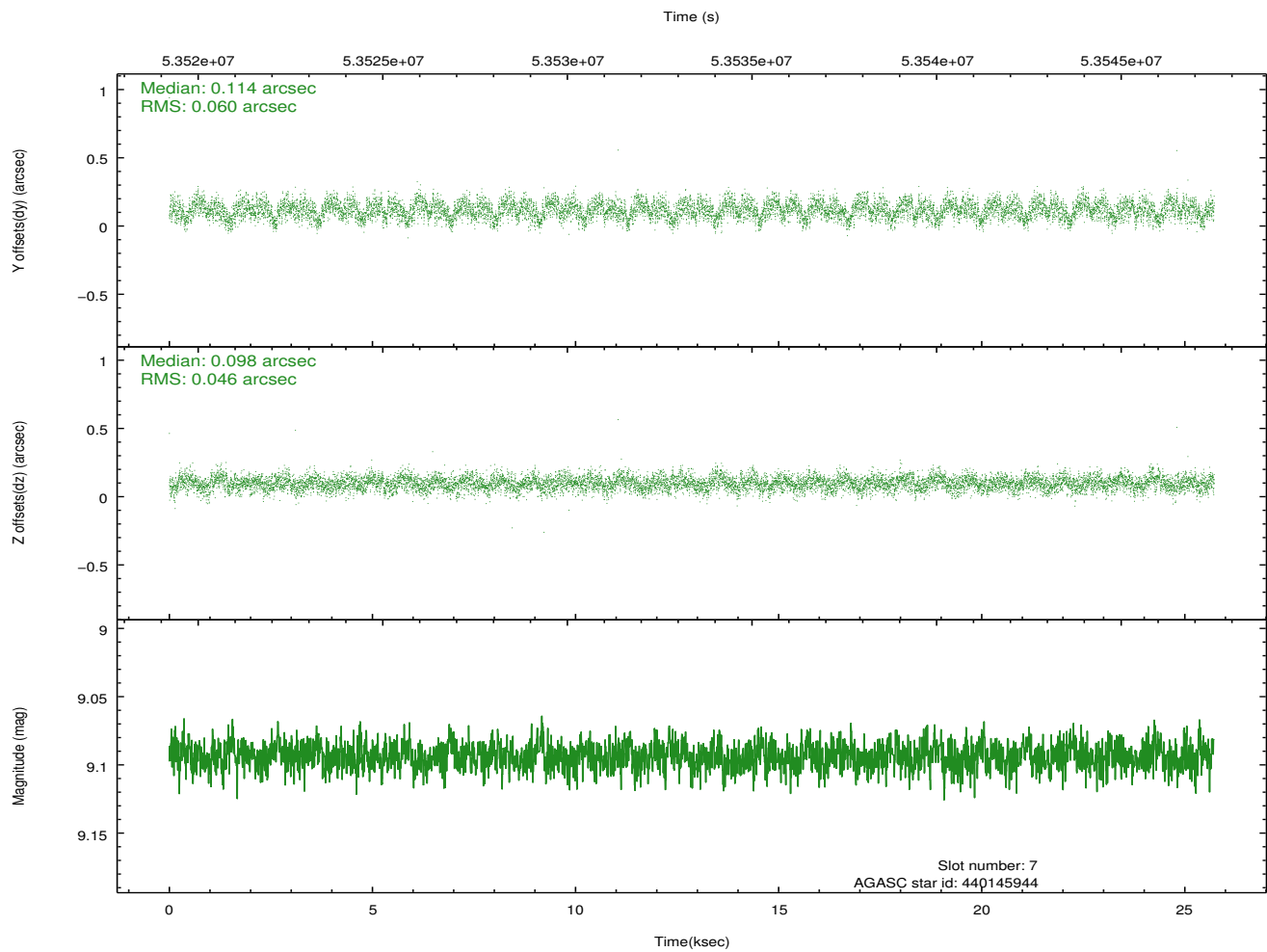
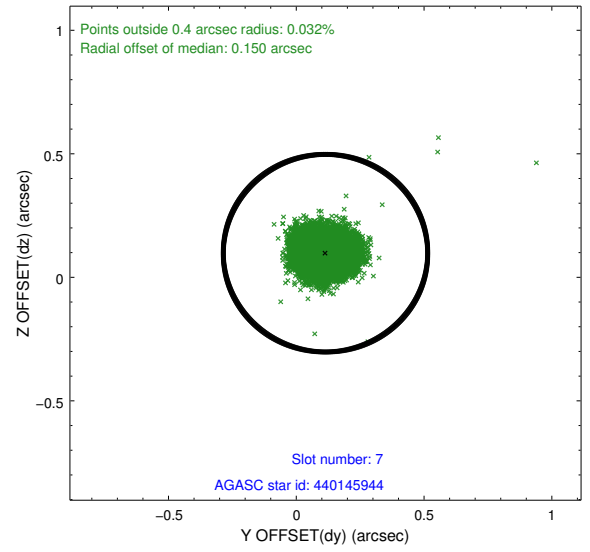
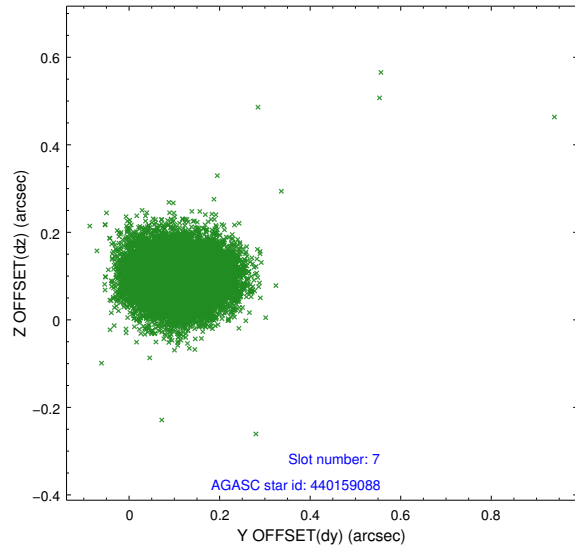
2.4.3 Slot 5



2.4.4 Slot 6

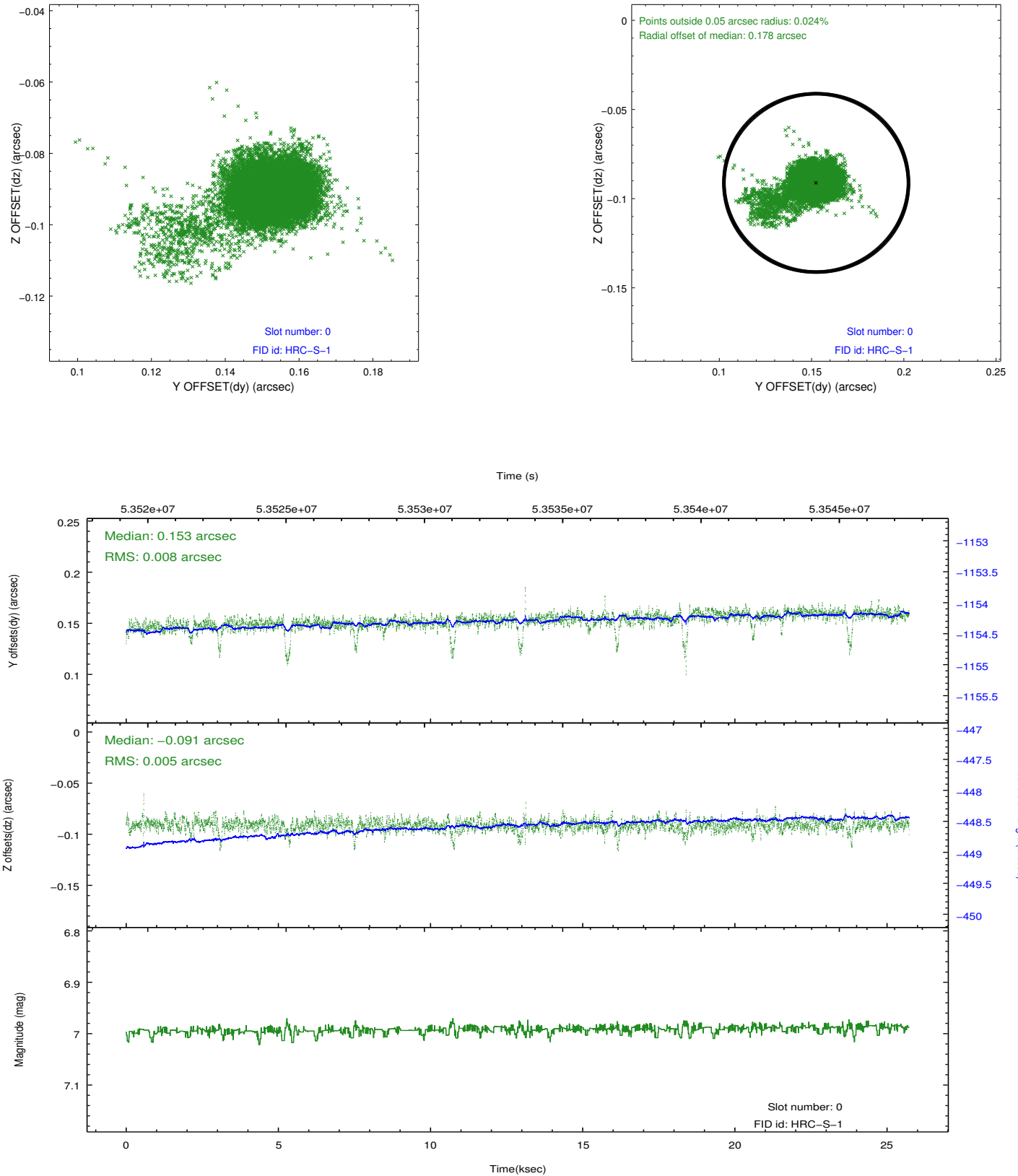


2.4.5 Slot 7

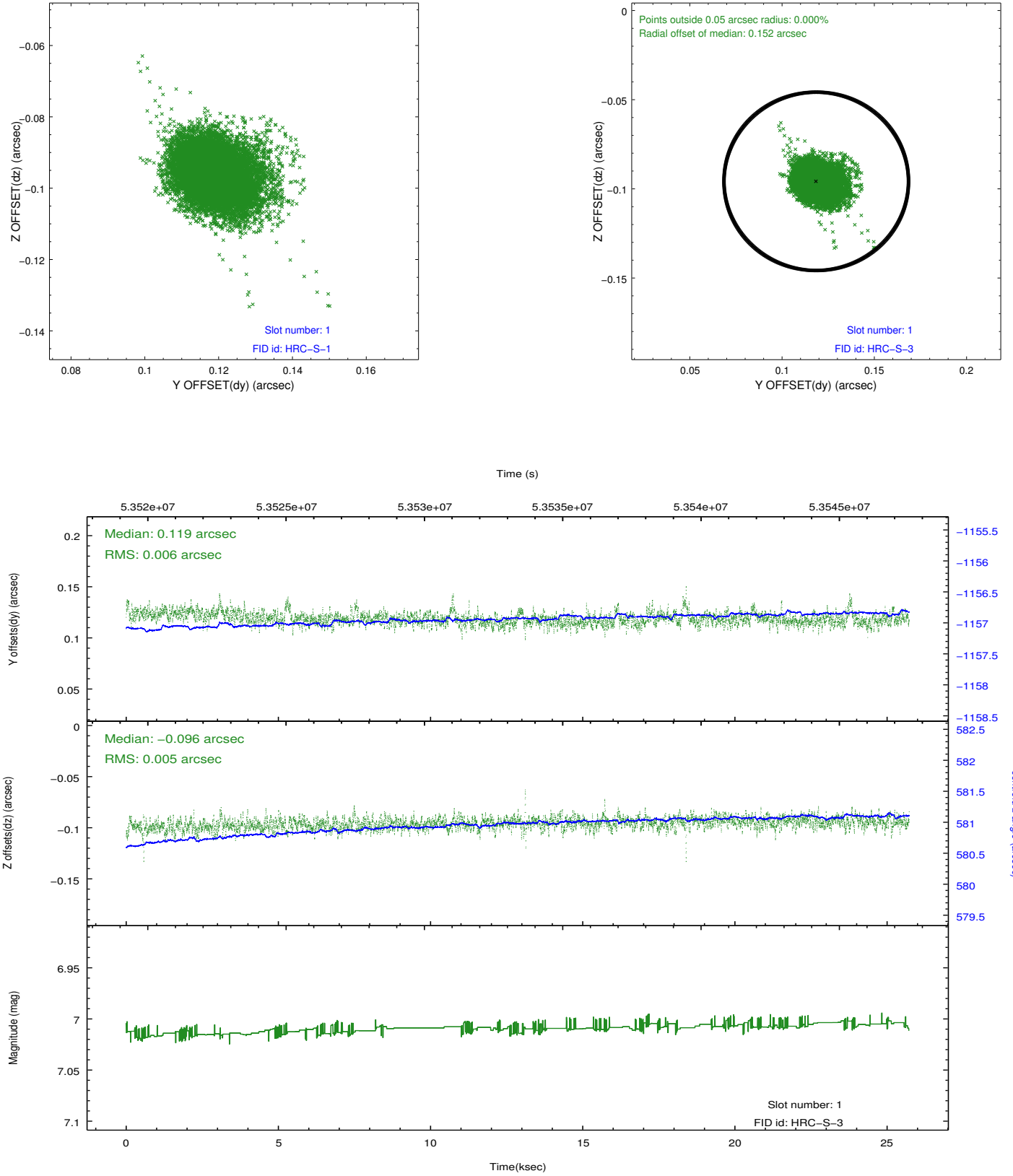


2.5 FID Slots

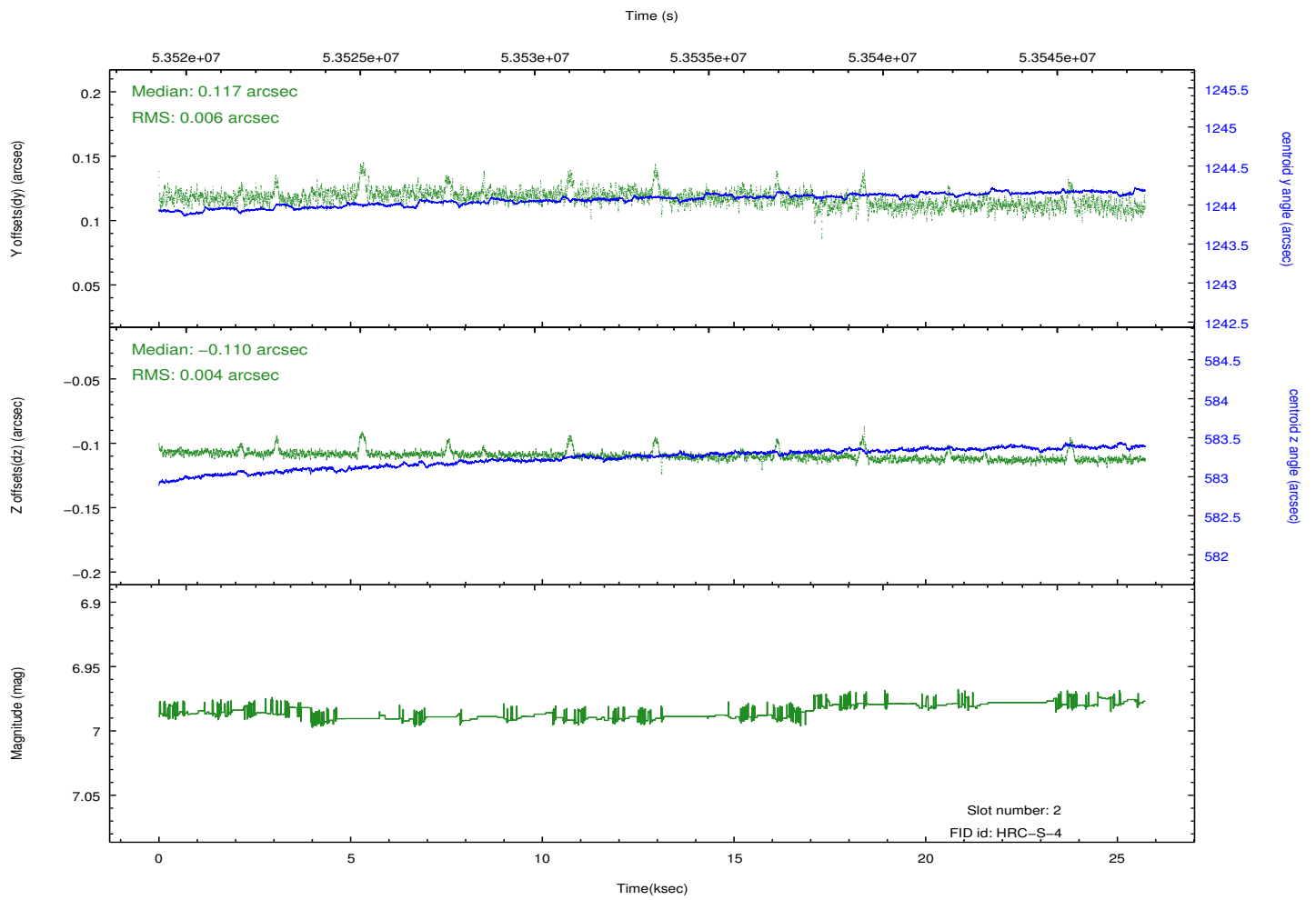
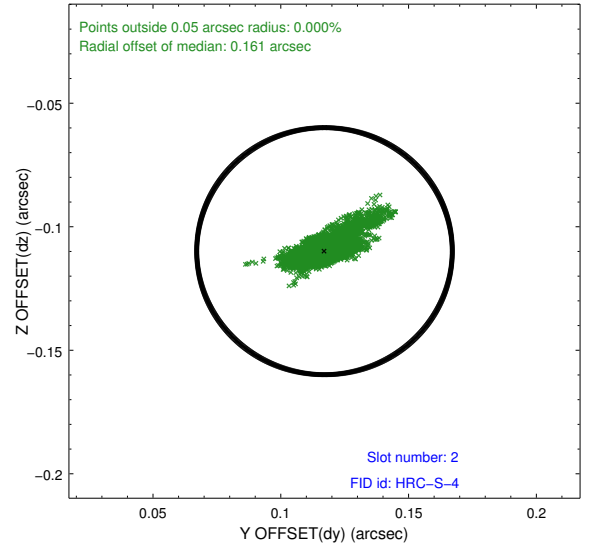
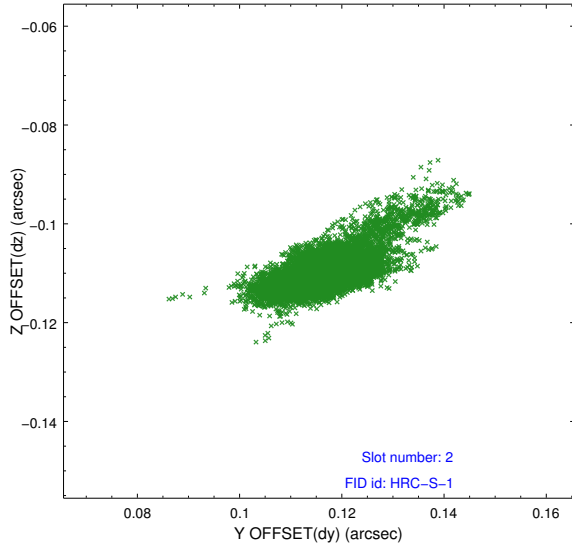
2.5.1 Slot 0



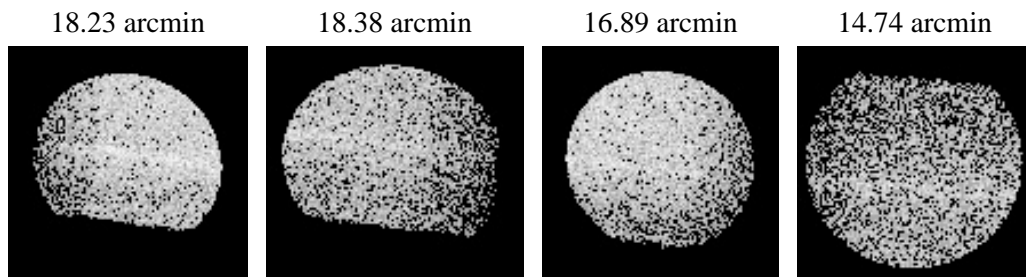
2.5.2 Slot 1



2.5.3 Slot 2



3 Point Sources



A Summary

A.1 Status

V&V Scientist	Beth Sundheim
V&V Date (YYYY-MM-DD)	2010.02.01
V&V Edition	1
V&V Disposition and Status	OK
V&V Charge Time	25.707

A.2 Comments