

# V&V Reference Report

## L2 ASCDS Version : 8.5.1.1

Observation 6266 - L2 Version 3  
Chandra X-Ray Center

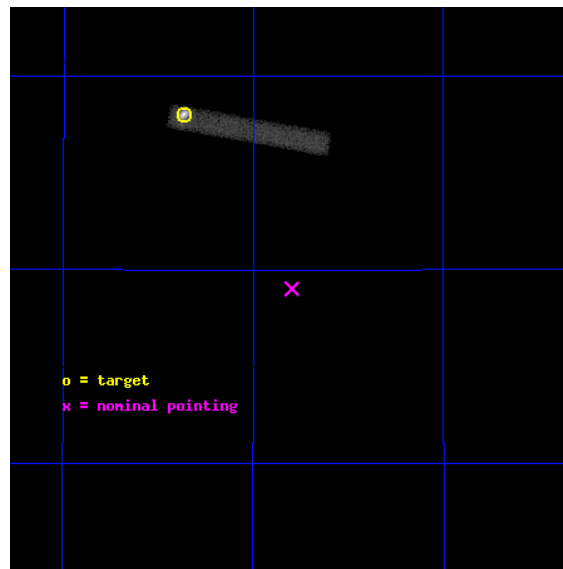
L2 Processing Date : Dec 24 2012

## Contents

<b>1</b>	<b>Front</b>	<b>2</b>
<b>2</b>	<b>OBI</b>	<b>3</b>
2.1	OBI . . . . .	3
2.1.1	Images . . . . .	3
2.1.2	Bias . . . . .	3
2.1.3	Parameters . . . . .	4
2.1.4	Events . . . . .	4
2.2	Compared Parameters . . . . .	5
2.3	Aspect . . . . .	6
2.4	Star Slots . . . . .	9
2.4.1	Slot 3 . . . . .	9
2.4.2	Slot 4 . . . . .	10
2.4.3	Slot 5 . . . . .	11
2.4.4	Slot 6 . . . . .	12
2.4.5	Slot 7 . . . . .	13
2.5	FID Slots . . . . .	14
2.5.1	Slot 0 . . . . .	14
2.5.2	Slot 1 . . . . .	15
2.5.3	Slot 2 . . . . .	16
<b>A</b>	<b>Summary</b>	<b>17</b>
A.1	Status . . . . .	17
A.2	Comments . . . . .	17

# 1 Front

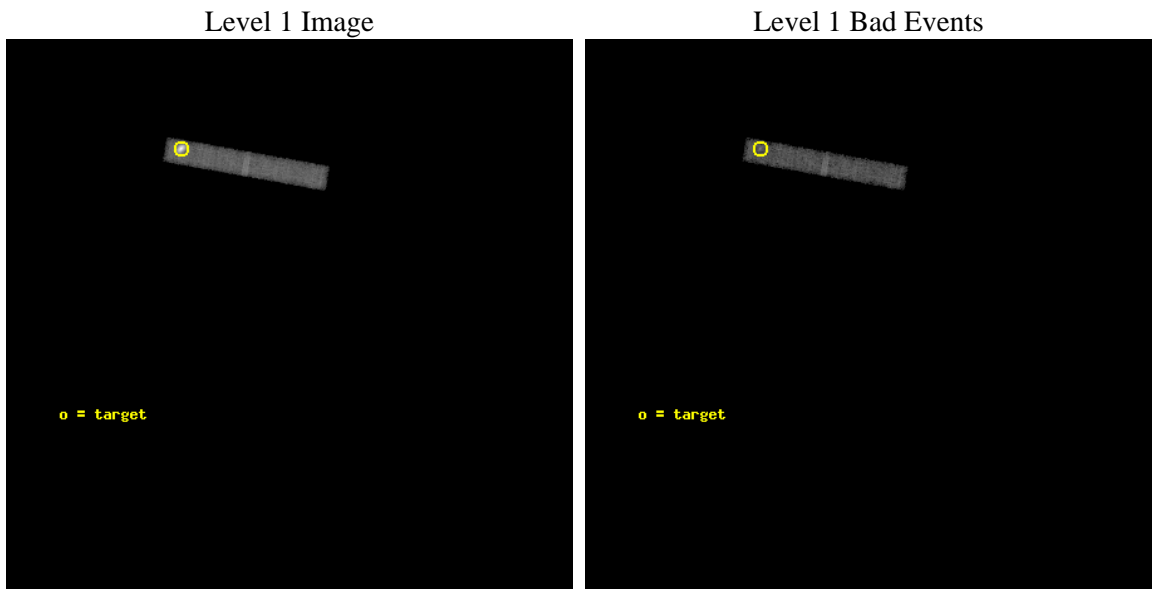
seq_num	300163	Sequence number
obs_id	6266	Observation id
title	The lightcurve and spectra of the cataclysmic variable EI UMa	Prop
observer	Dr. Peter Predehl	Principal investigator
object	EI UMa	Source name
dtcycle	0	&#160
cycle	P	events from which exps? Prim/Second/Both
ra_targ	129.591667	Observer's specified target RA [deg]
dec_targ	48.633806	Observer's specified target Dec [deg]
ra_nom	129.44913272503	Nominal RA [deg]
dec_nom	48.483817890053	Nominal Dec [deg]
roll_nom	280.19850358482	Nominal Roll [deg]
revision	3	Processing version of data
ontime	27827.159374595	Sum of GTIs [s]
livetime	25237.764714851	Livetime [s]
ontime3	27827.159374595	Sum of GTIs [s]
l2events	48633	Number of level 2 events



## 2 OBI

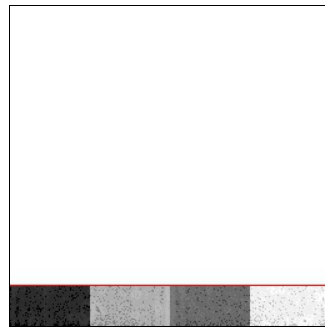
### 2.1 OBI

#### 2.1.1 Images



#### 2.1.2 Bias

Chip 3



### 2.1.3 Parameters

obi_num	0	Obi number	sched_exp_time	27657.335000	[s] Scheduled observation exposure time
ascdsver	8.5.1.1	Processing system revision	ontime	27827.159374595	Sum of GTIs [s]
caldbver	4.5.5	&#160	ontime3	27827.159374595	Sum of GTIs [s]
date	2012-12-24T12:58:52	Date and time of file creation	l1events	90963	Number of level 1 events
revision	3	Processing version of data			

### 2.1.4 Events

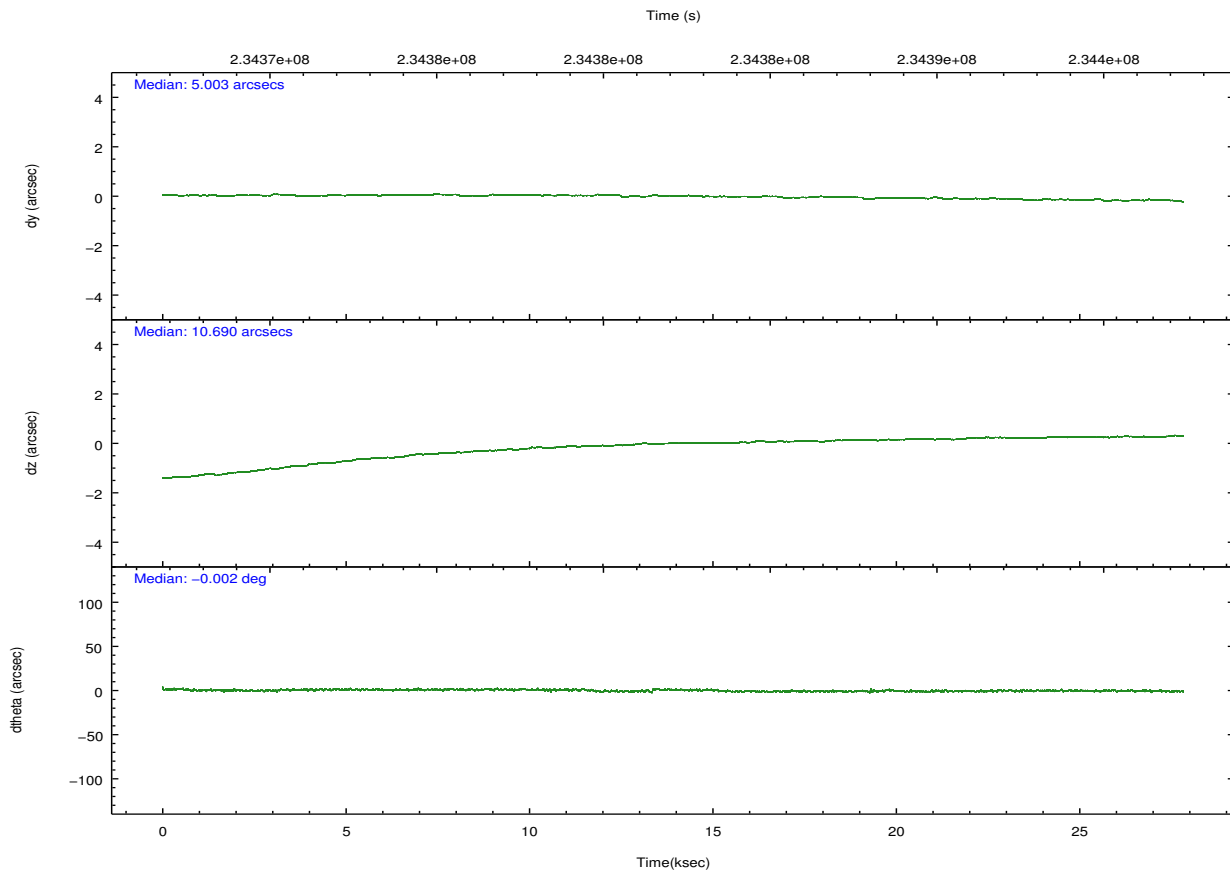
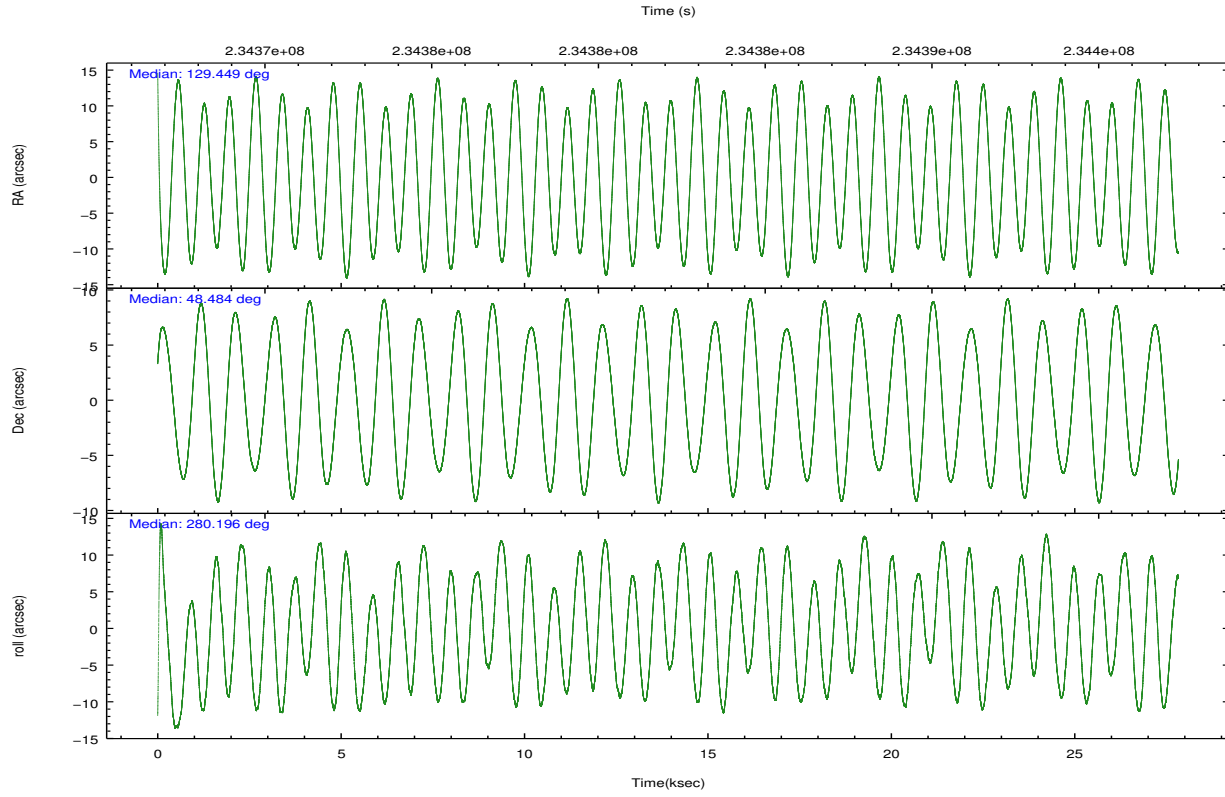
	<b>ccd 3</b>
level 1 events	90963
rejected events	41151
rejected %	45%

	<b>ccd 3</b>
grade 0 events	35836
	39%
grade 1 events	102
	0%
grade 2 events	6084
	6%
grade 3 events	2724
	2%
grade 4 events	2631
	2%
grade 5 events	1309
	1%
grade 6 events	2906
	3%
grade 7 events	39371
	43%

## 2.2 Compared Parameters

Parameter	Planned	Actual	Parameter	Planned	Actual
Instrument	ACIS	ACIS	Obspar format version number	7	7
Detector	ACIS-3	ACIS-3	Obspar file type	PREDICTED	ACTUAL
Grating	NONE	NONE	Obspar update status	NONE	UPDATED
Data mode	FAINT	FAINT	Number of optional ACIS chips dropped	0	0
Observation mode	POINTING	POINTING	On-chip summing requested	N	N
[deg] Pointing RA	129.422336	129.4491327250342	Subarray requested	CUSTOM	1/8
[deg] Pointing Dec	48.504678	48.48381789005323	Subarray start row	1	1
[deg] Pointing Roll	280.009896	280.1985035848207	Subarray row count	128	128
[mm] SIM focus pos	-0.782348	-0.7809083437167272	Alternating exposures requested	N	N
[mm] SIM defocus	0	0.001439871863259334	[s] Primary exposure time	0.000000	0.4
[mm] SIM translation stage pos	-233.592463	-233.5874344608287			
[mm] SIM translation stage offset	0	-0.005018542100998502			
[s] Observation start time (MET)	234368345.184000	234366991.00918			
Observation start date	2005-06-05T14:18:01	2005-06-05T13:56:31			
[s] Observation end time (MET)	234396002.184000	234396241.43552			
Observation end date	2005-06-05T21:58:58	2005-06-05T22:04:01			
Read mode	TIMED	TIMED			

## 2.3 Aspect

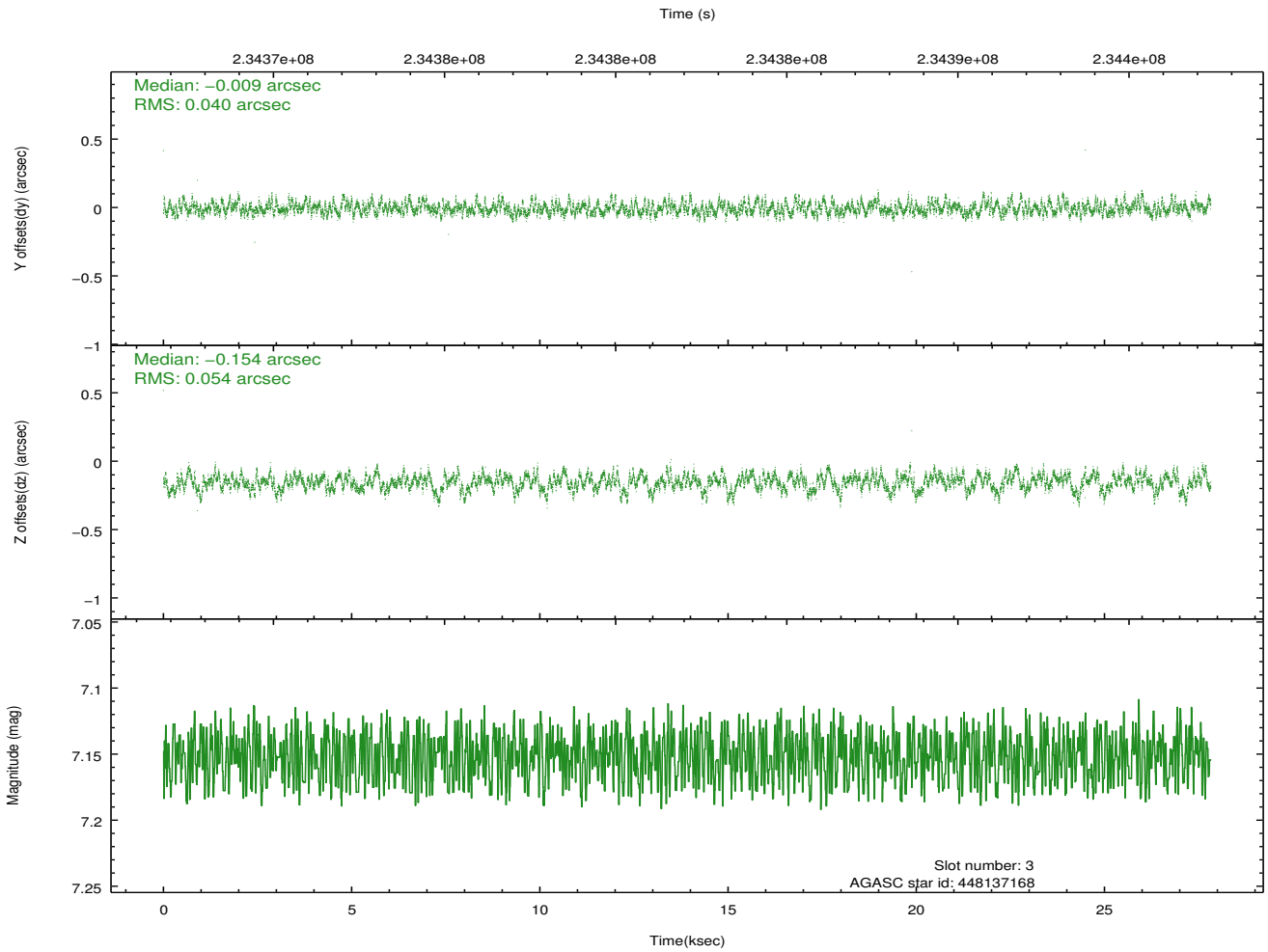
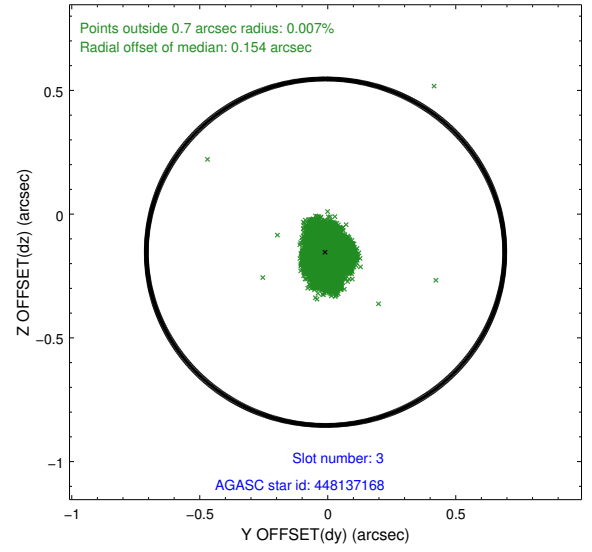
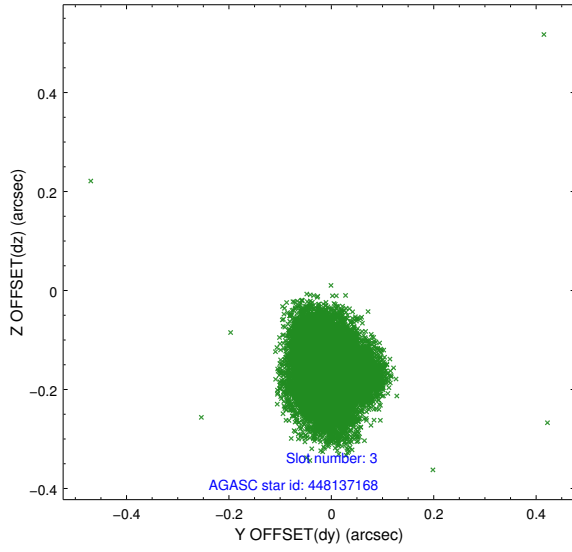


### Slot Statistics

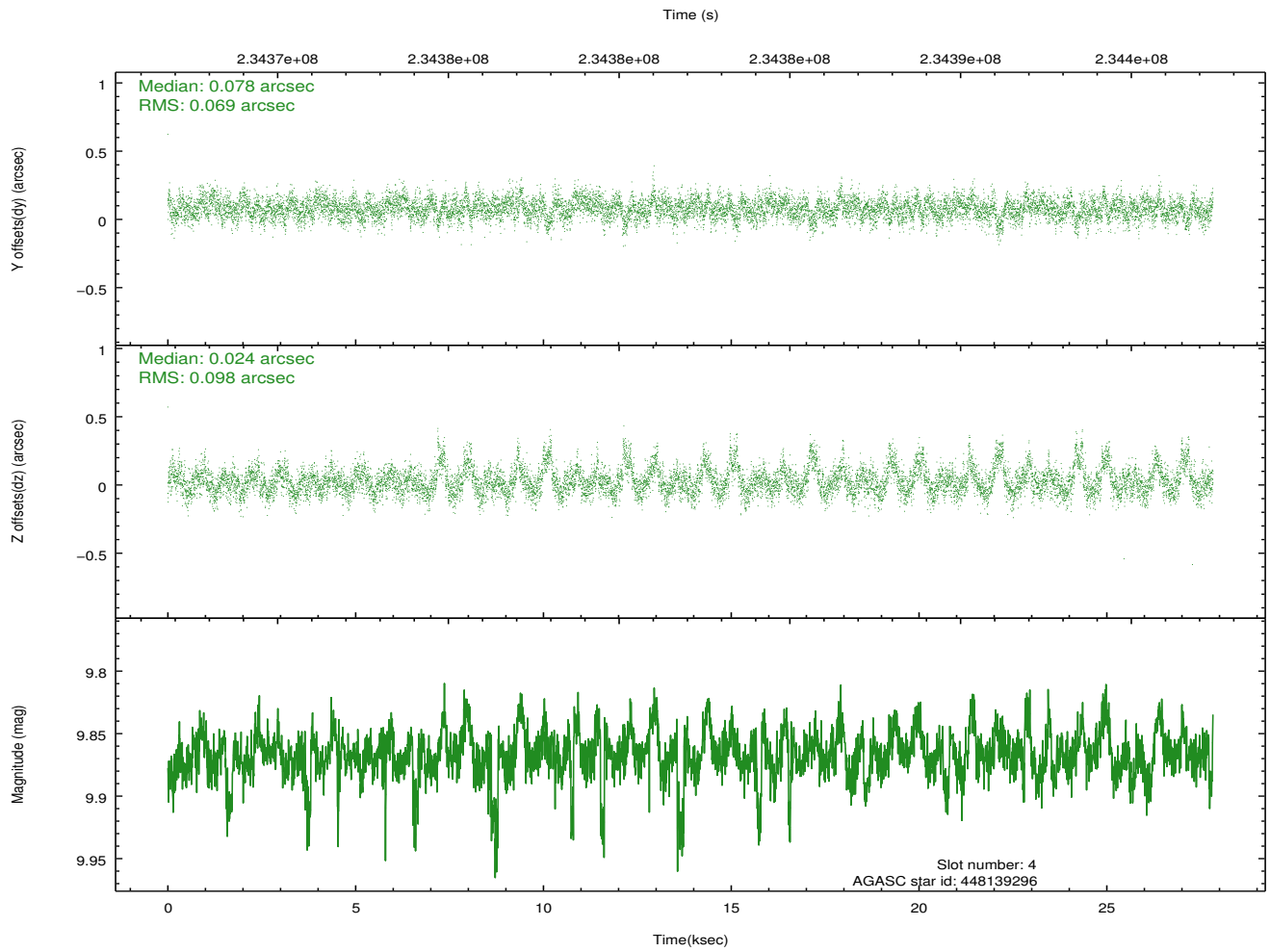
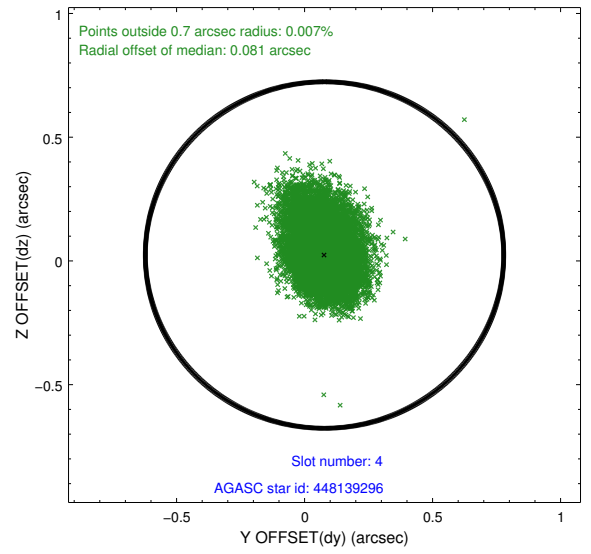
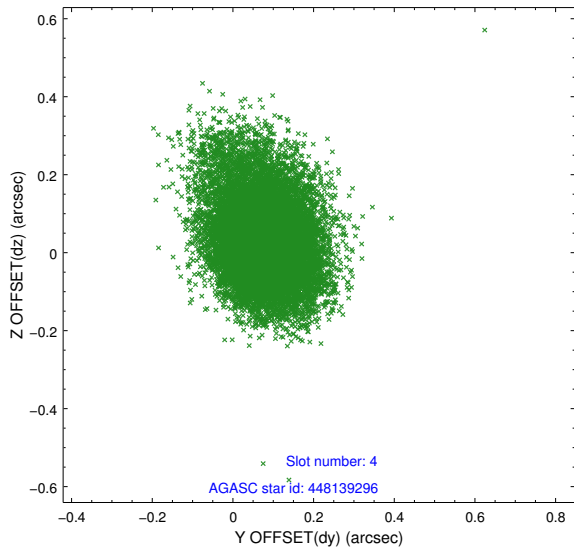
slot	status	id	mag	n_pts	med_dy	med_dz	dr1	dr2	ra	dec	mean_y	mean_z
0	FID	ACIS-I-2	7.14	6785	-0.059	-0.088	0.019	0.034	0.000000	0.000000	-759.47	-840.42
1	FID	ACIS-I-4	7.16	6786	0.111	0.063	0.010	0.024	0.000000	0.000000	2154.71	1065.86
2	FID	ACIS-I-5	7.22	6786	-0.153	0.093	0.016	0.031	0.000000	0.000000	-1813.28	1063.84
3	GUIDE	448137168	7.15	13574	-0.009	-0.154	0.072	0.113	128.722836	48.533723	-399.79	-1622.73
4	GUIDE	448139296	9.87	13563	0.078	0.024	0.121	0.220	129.077095	48.192176	962.50	-1010.95
5	GUIDE	448142144	8.42	13575	-0.082	0.050	0.063	0.106	129.164615	48.332904	501.13	-714.47
6	GUIDE	448145968	9.89	13559	0.071	0.047	0.133	0.220	130.277247	48.257599	1221.68	1865.94
7	GUIDE	448145880	9.67	13473	-0.057	0.030	0.097	0.158	129.329974	49.152000	-2332.37	191.21

## 2.4 Star Slots

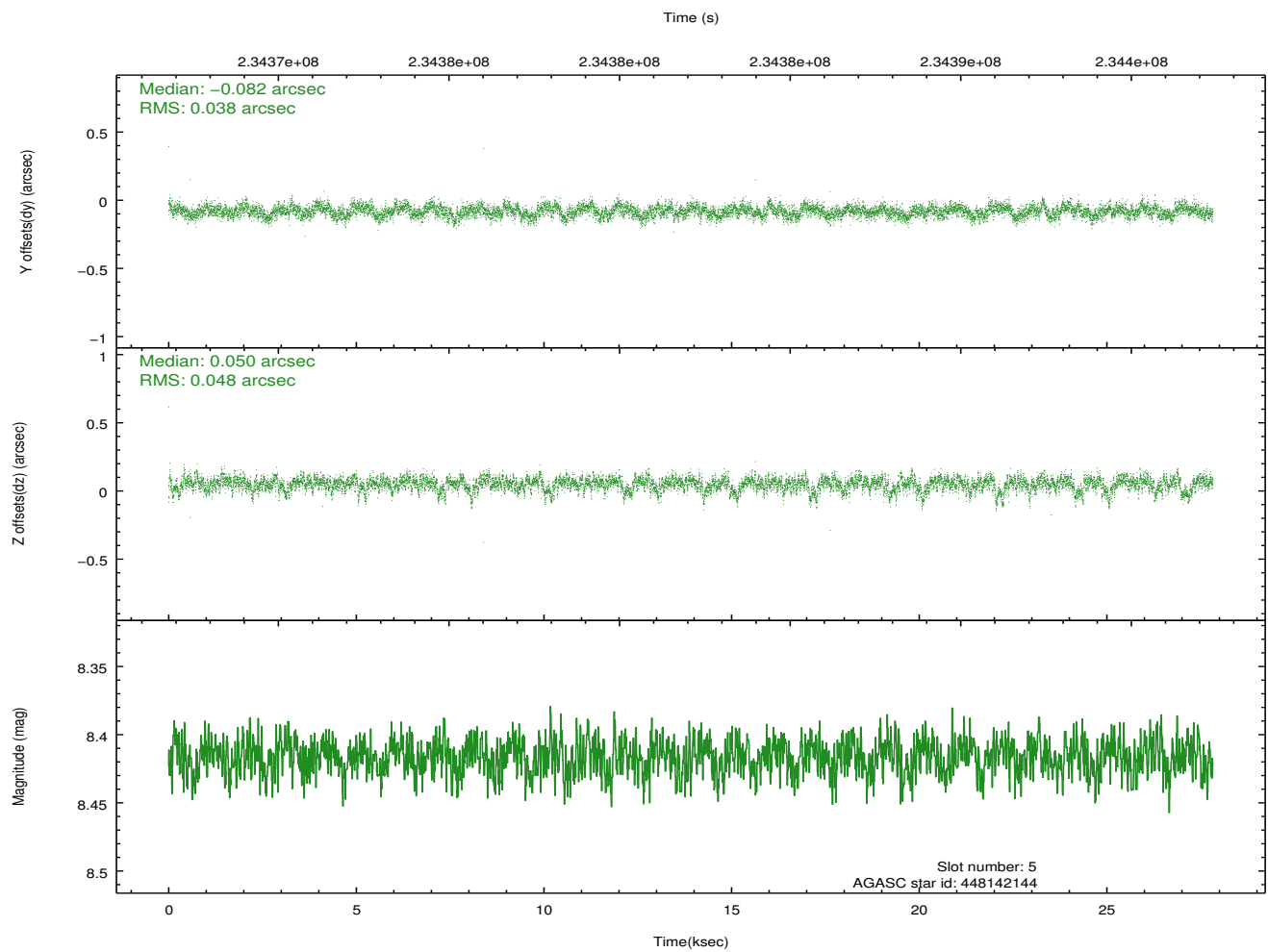
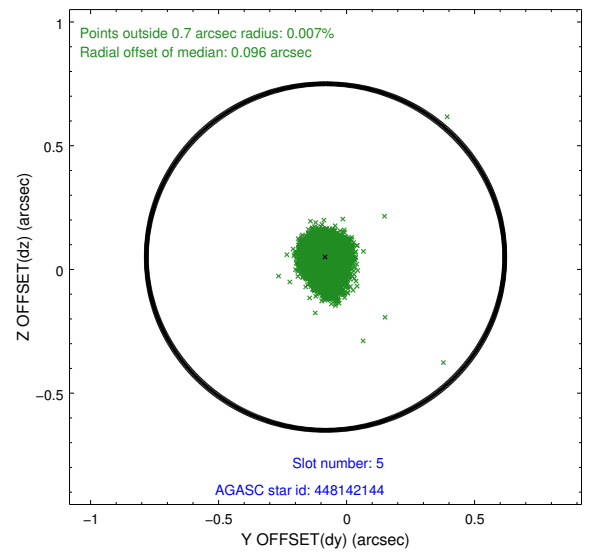
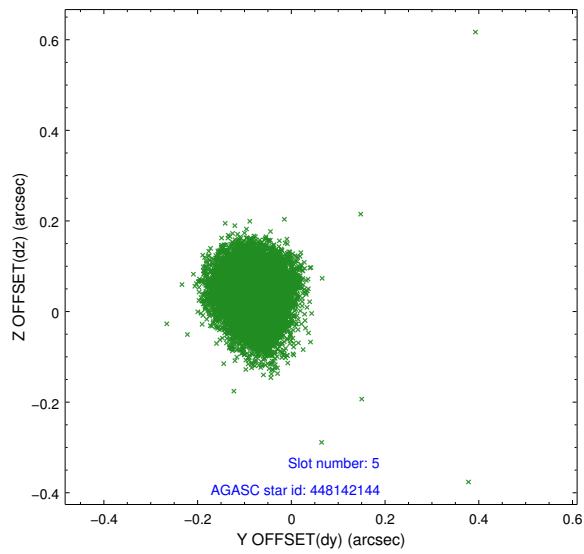
### 2.4.1 Slot 3



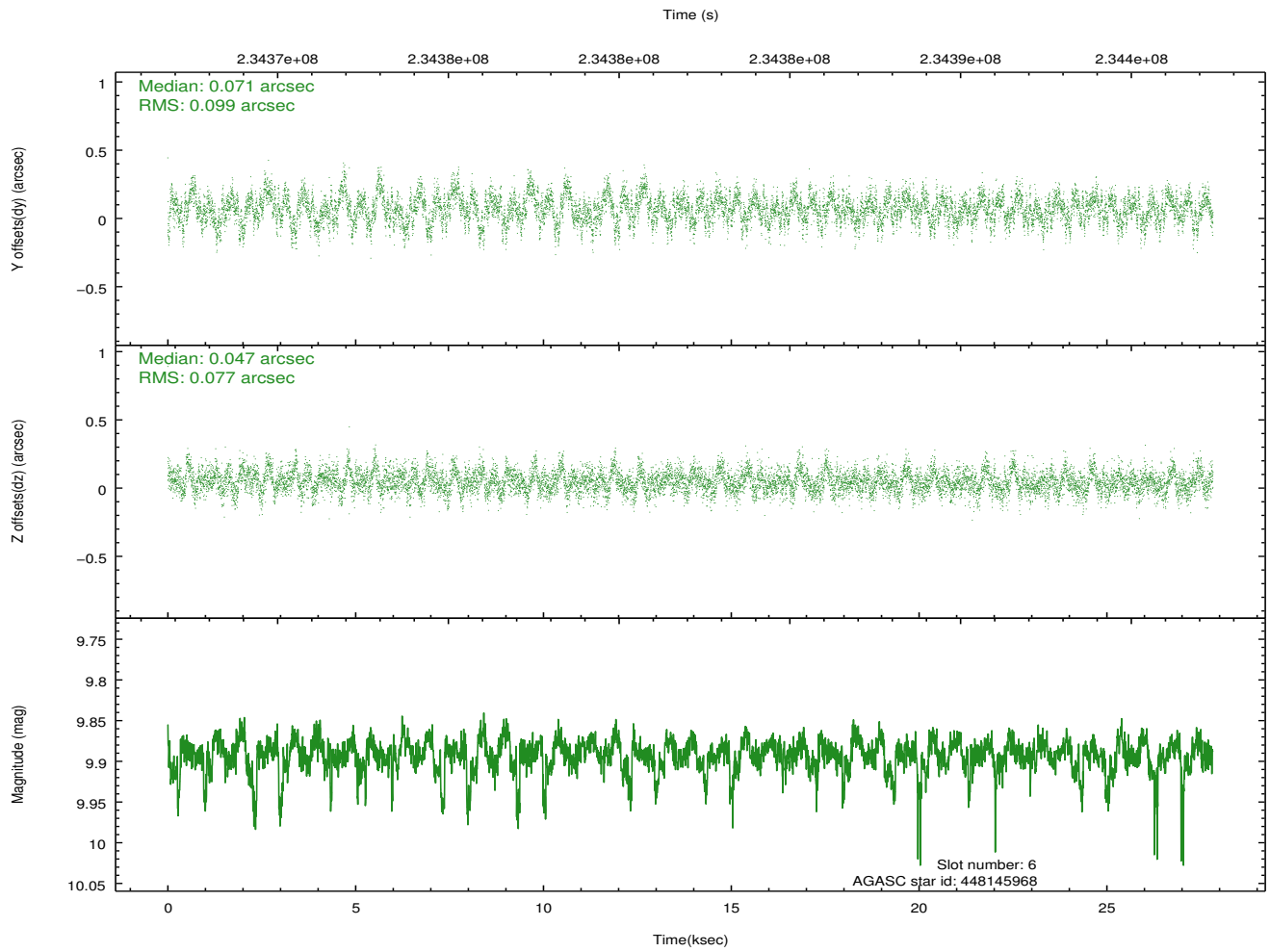
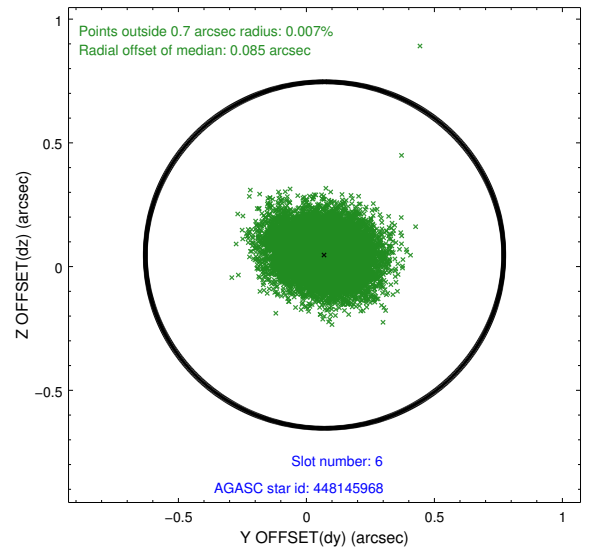
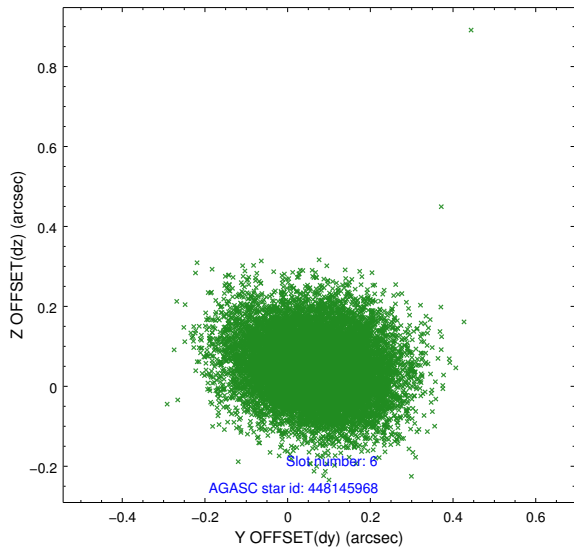
## 2.4.2 Slot 4



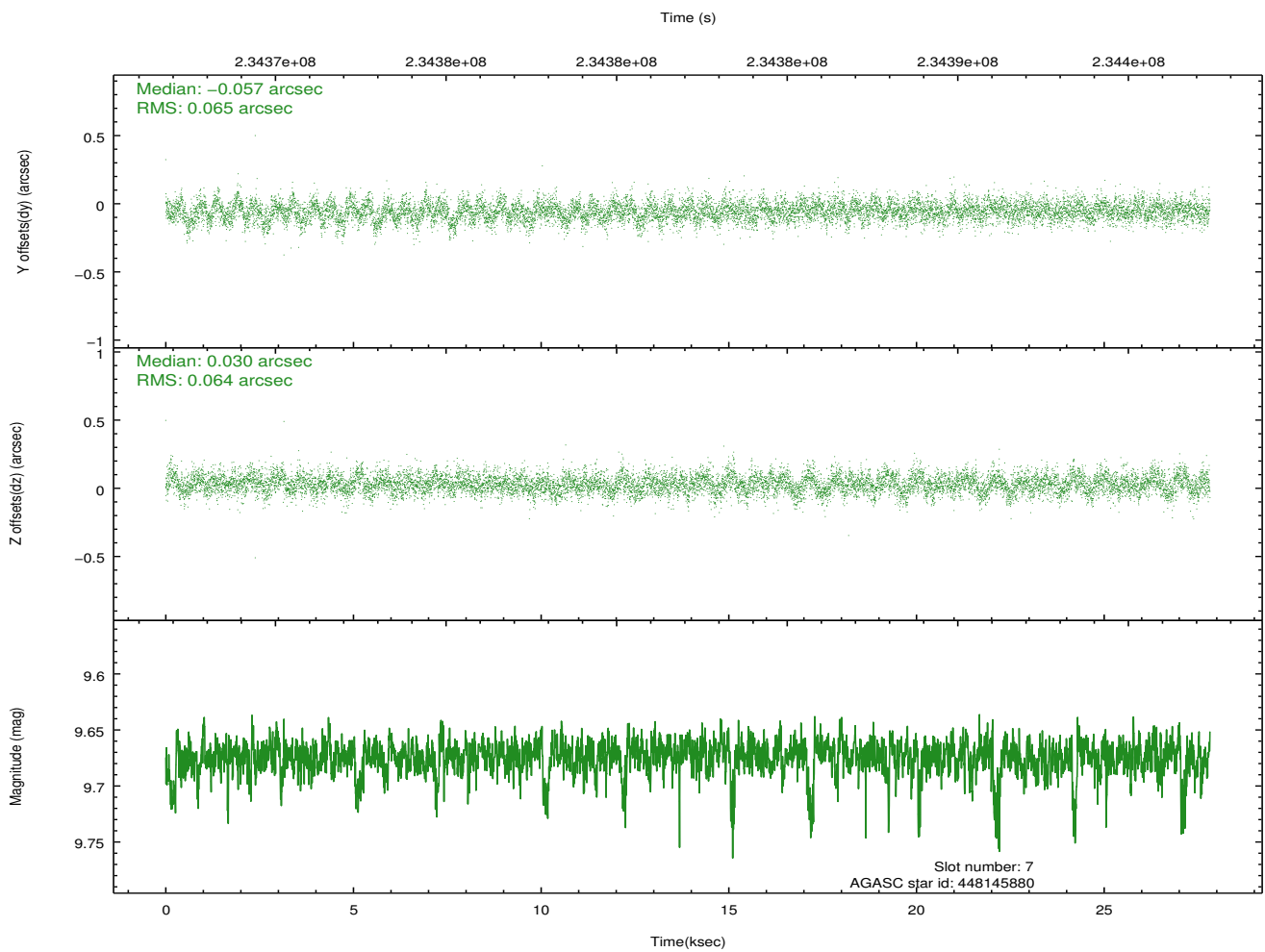
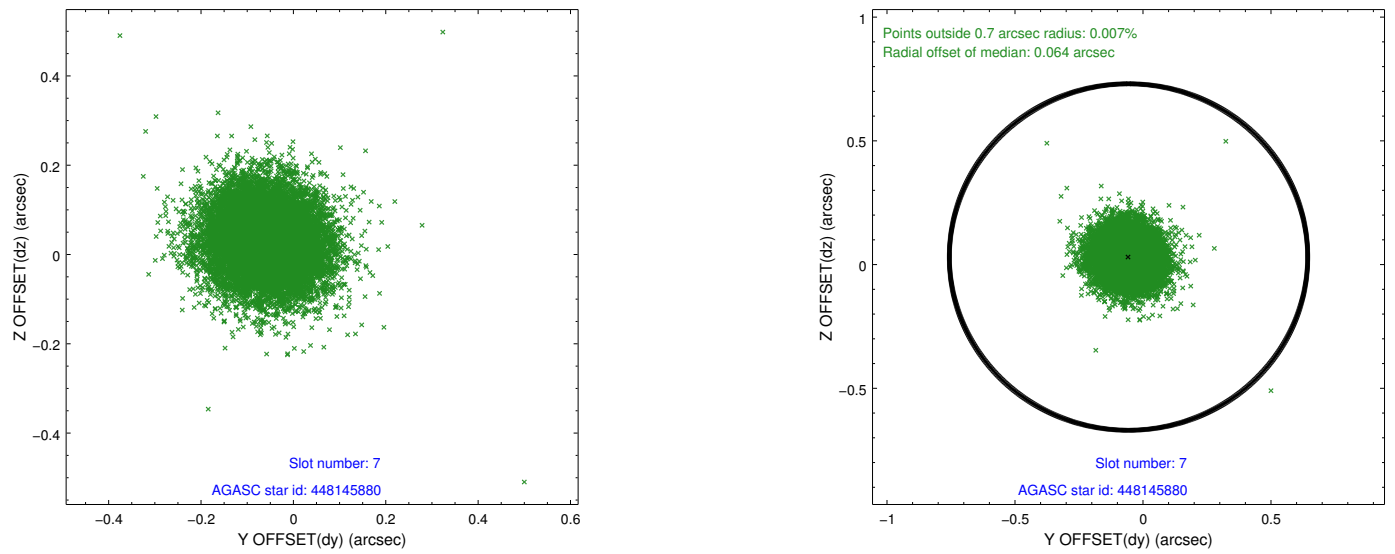
### 2.4.3 Slot 5



### 2.4.4 Slot 6

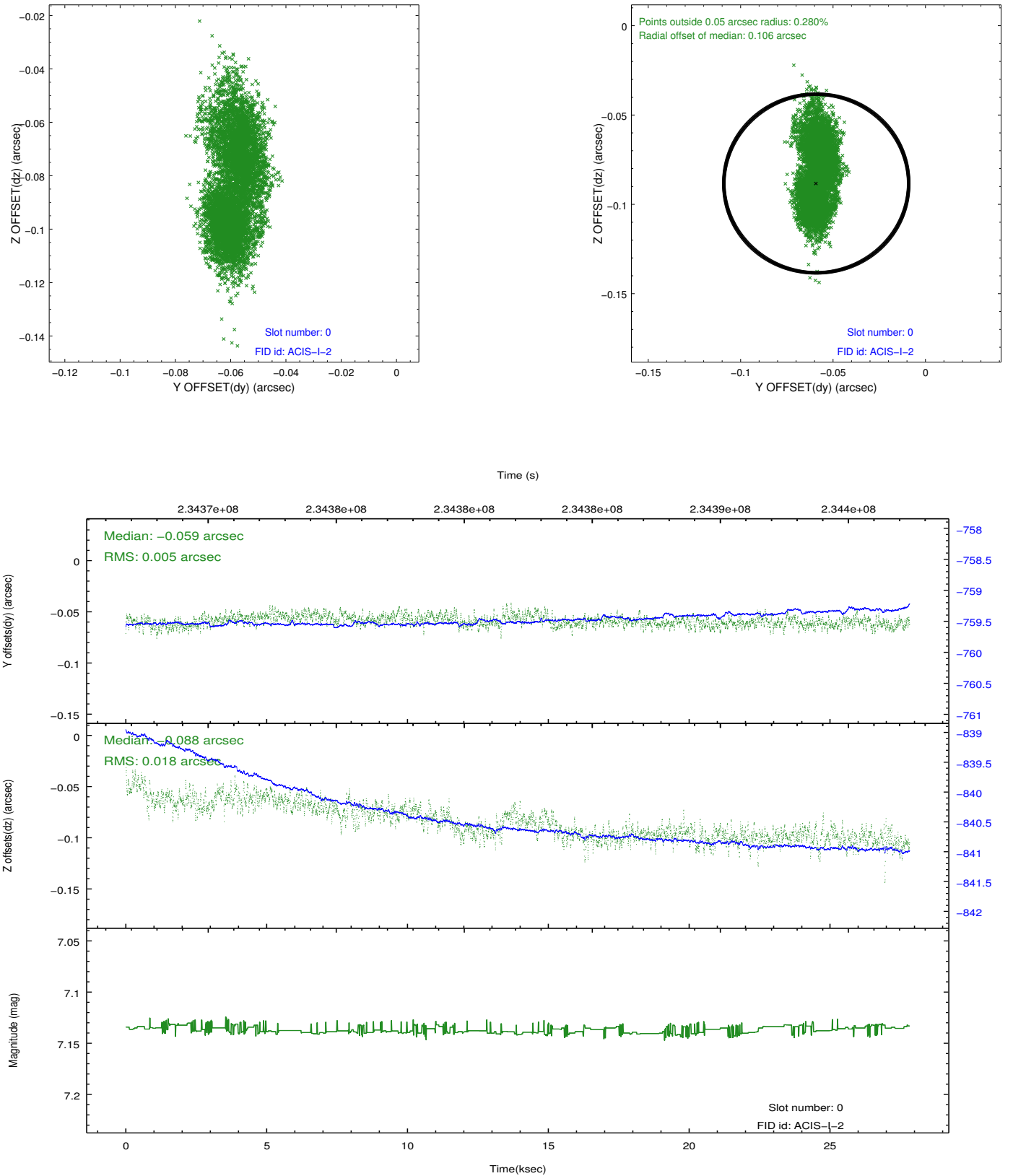


## 2.4.5 Slot 7

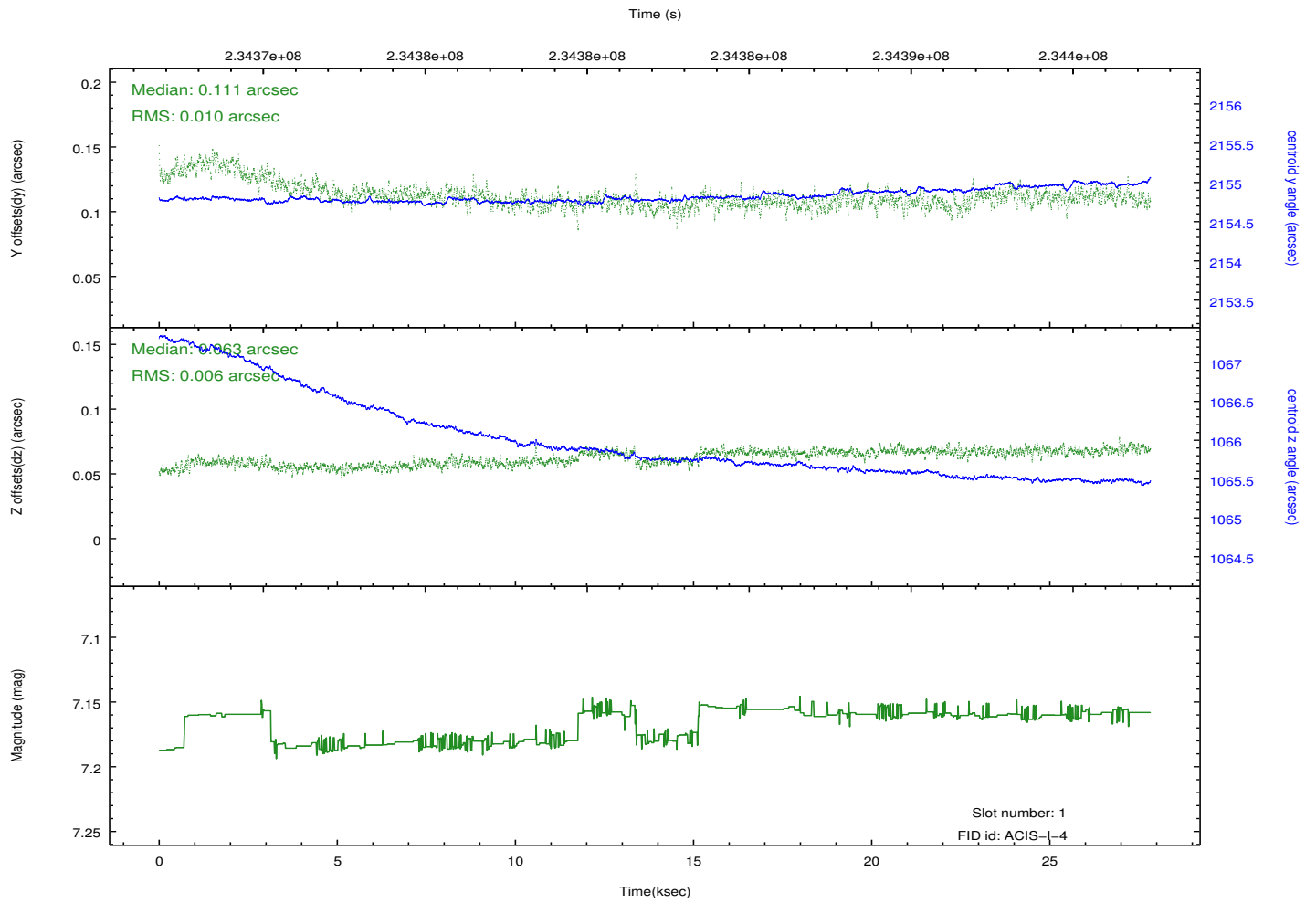
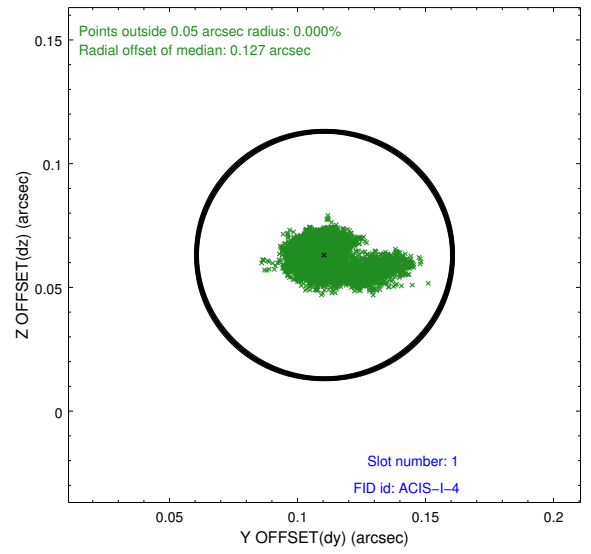
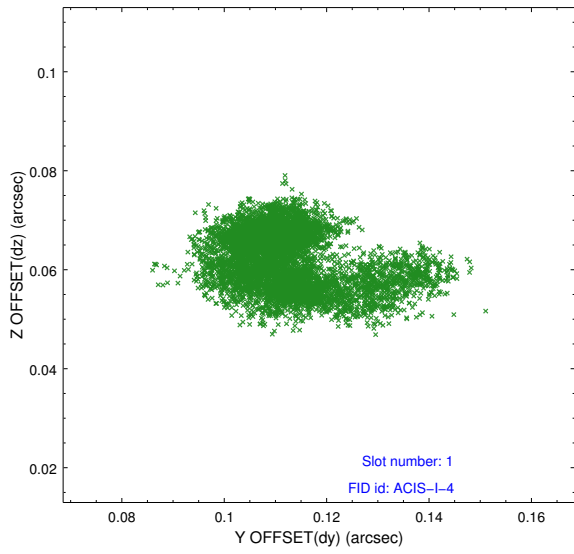


## 2.5 FID Slots

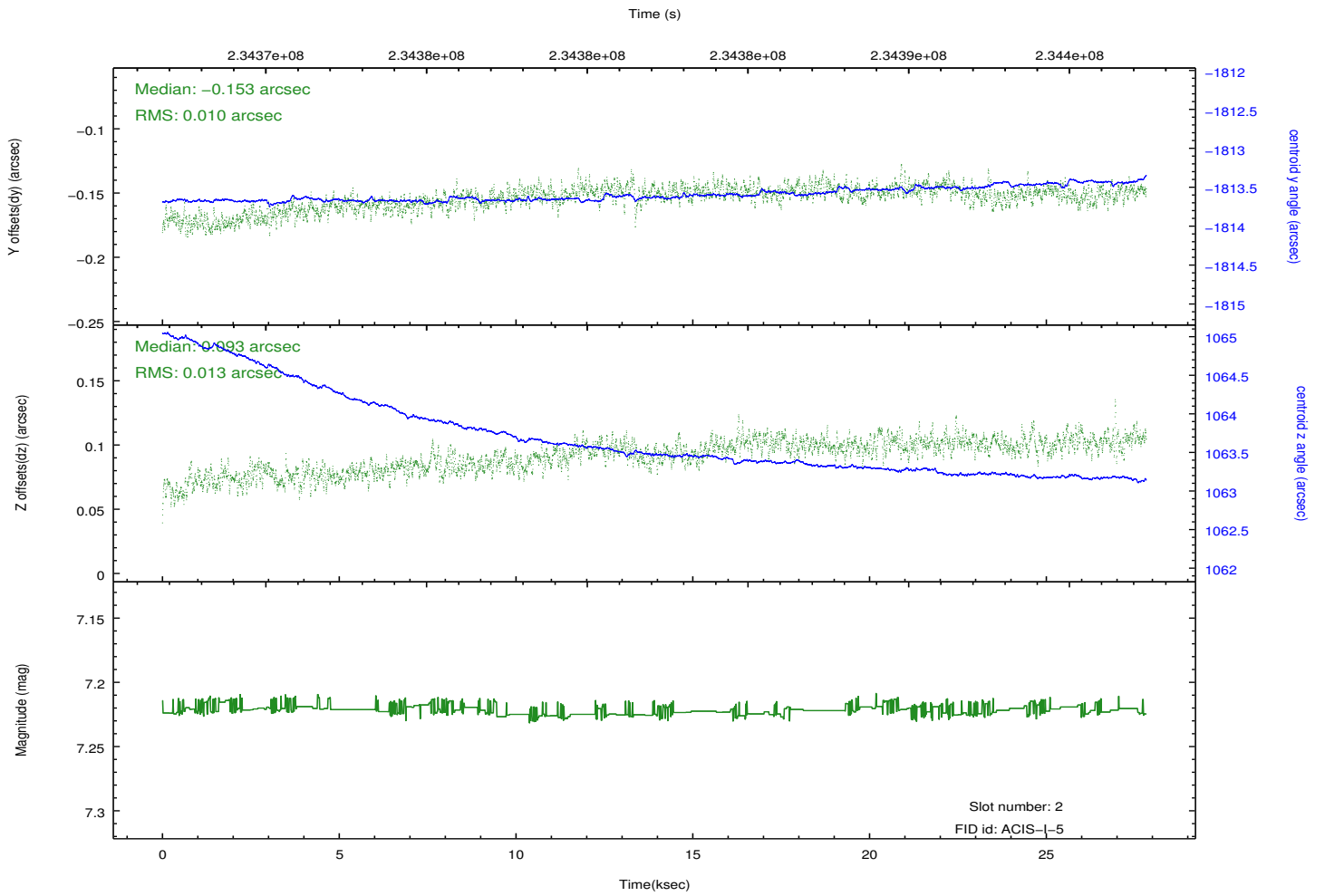
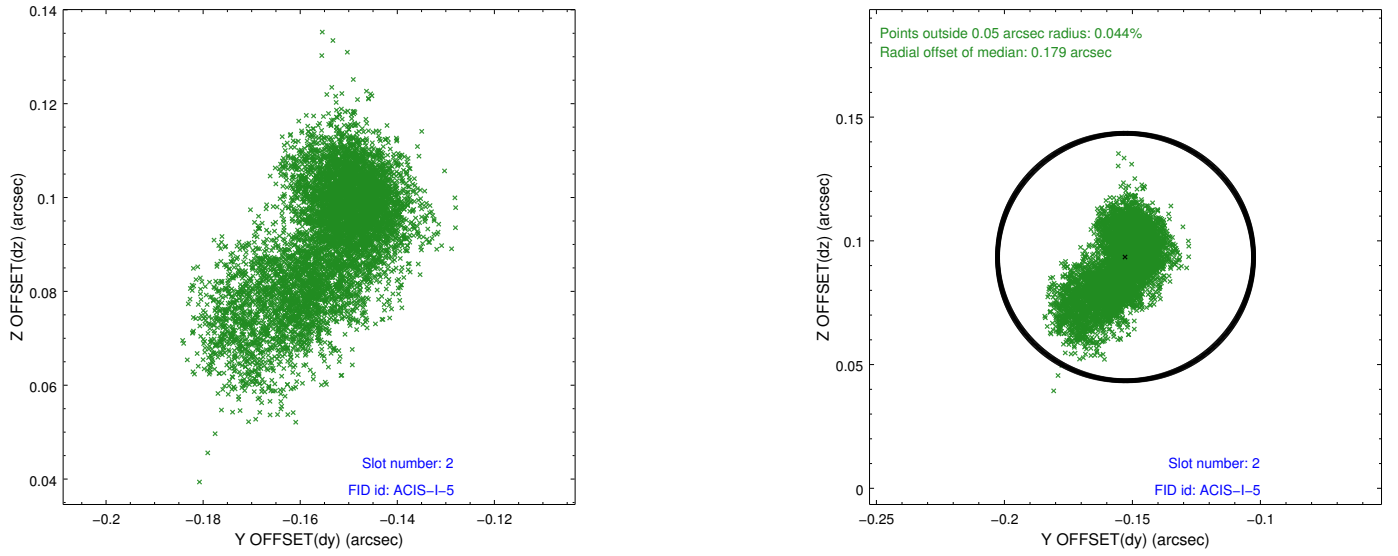
### 2.5.1 Slot 0



## 2.5.2 Slot 1



### 2.5.3 Slot 2



## A Summary

### A.1 Status

V&V Scientist	Jen Lauer
V&V Date (YYYY-MM-DD)	2013.01.16
V&V Edition	1
V&V Disposition and Status	OK
V&V Charge Time	27.82715

### A.2 Comments