

# V&V Reference Report

## L2 ASCDS Version : 8.4.3.1

Observation 6306 - L2 Version 4  
Chandra X-Ray Center

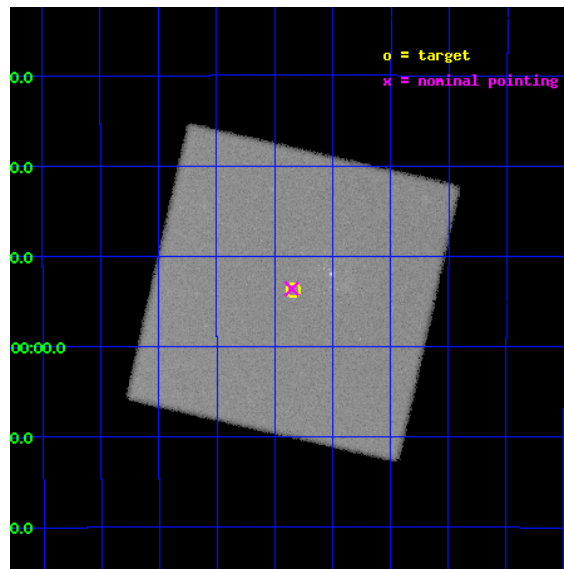
L2 Processing Date : Aug 11 2012

## Contents

<b>1</b>	<b>Front</b>	<b>2</b>
<b>2</b>	<b>OBI</b>	<b>3</b>
2.1	OBI . . . . .	3
2.1.1	Images . . . . .	3
2.1.2	Parameters . . . . .	4
2.1.3	Events . . . . .	4
2.2	Compared Parameters . . . . .	5
2.3	Aspect . . . . .	6
2.4	Star Slots . . . . .	9
2.4.1	Slot 3 . . . . .	9
2.4.2	Slot 4 . . . . .	10
2.4.3	Slot 5 . . . . .	11
2.4.4	Slot 6 . . . . .	12
2.4.5	Slot 7 . . . . .	13
2.5	FID Slots . . . . .	14
2.5.1	Slot 0 . . . . .	14
2.5.2	Slot 1 . . . . .	15
2.5.3	Slot 2 . . . . .	16
<b>A</b>	<b>Summary</b>	<b>17</b>
A.1	Status . . . . .	17
A.2	Comments . . . . .	17

# 1 Front

seq_num	600477	Sequence number
obs_id	6306	Observation id
title	ULX counterparts: the key to finding intermediate-mass black holes	&#160
observer	Dr Timothy Roberts	Principal investigator
object	M83 IXO 82	Source name
ra_targ	204.33375	Observer's specified target RA [deg]
dec_targ	-29.896111	Observer's specified target Dec [deg]
ra_nom	204.33770310734	Nominal RA [deg]
dec_nom	-29.893749873	Nominal Dec [deg]
roll_nom	57.824479252709	Nominal Roll [deg]
revision	4	Processing version of data
ontime	20178.919687599	[s]
livetime	20017.733375574	Ontime multiplied by DTCOR
l2events	878582	Number of level 2 events

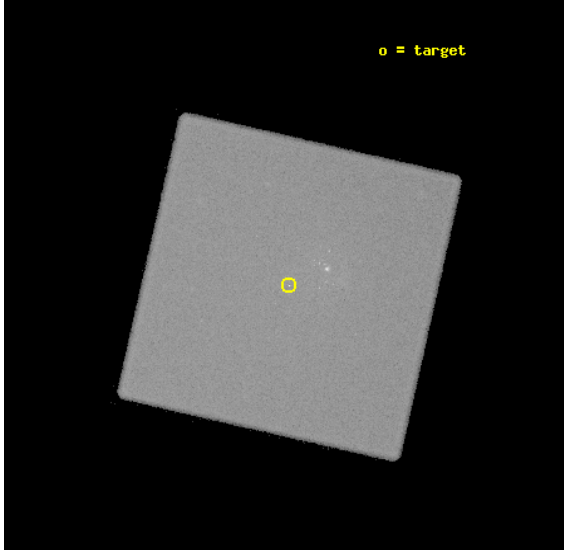


## 2 OBI

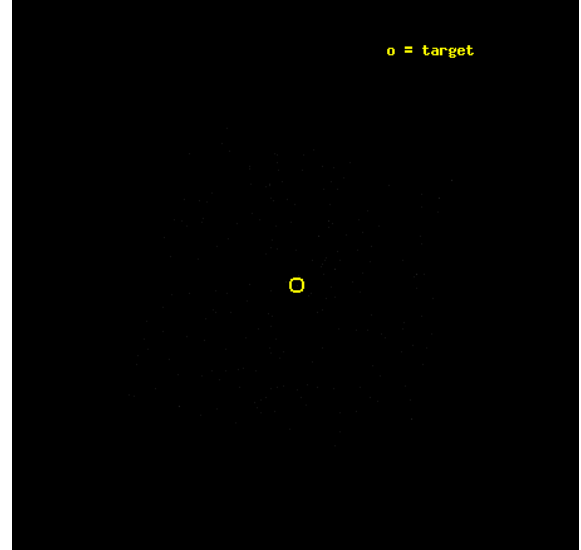
### 2.1 OBI

#### 2.1.1 Images

Level 1 Image



Level 1 Bad Events



### 2.1.2 Parameters

obi_num	0	Obi number	sched_exp_time	20000.000000	[s] Scheduled observation exposure time
ascdsver	8.4.5	Processing system revision	ontime	20178.919687599	[s]
caldbver	4.5.1.1	&#160	l1events	1411083	Number of level 1 events
date	2012-08-11T00:43:19	Date and time of file creation			
revision	4	Processing version of data			

### 2.1.3 Events

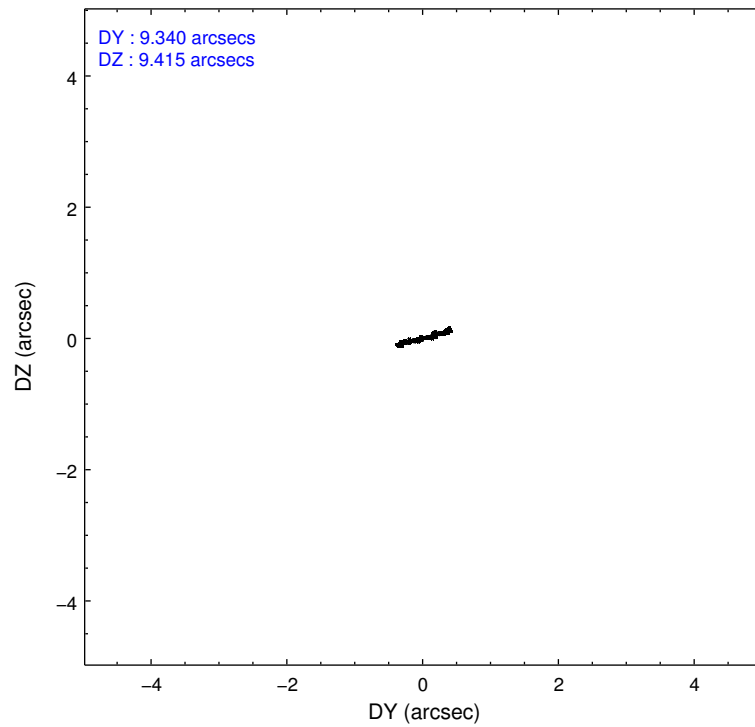
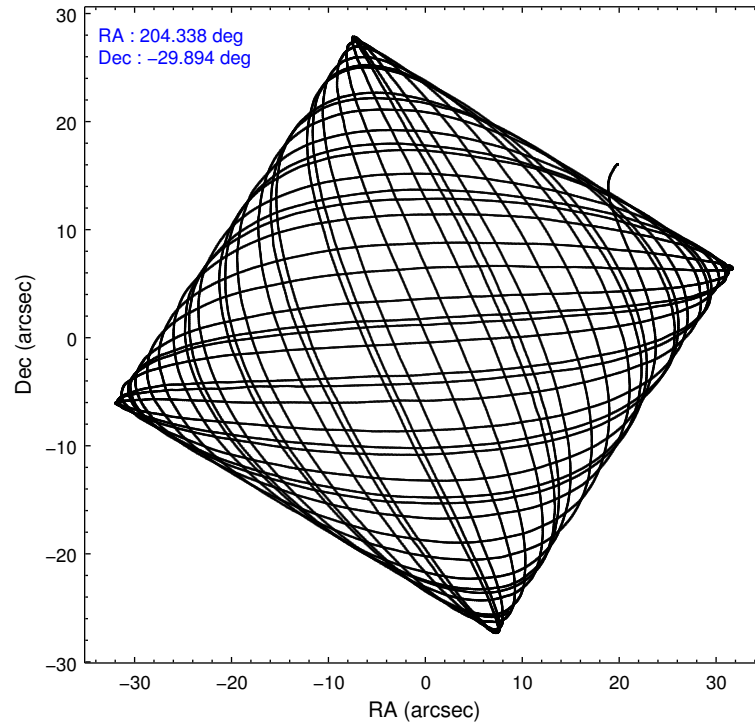
#### Level 1 Events

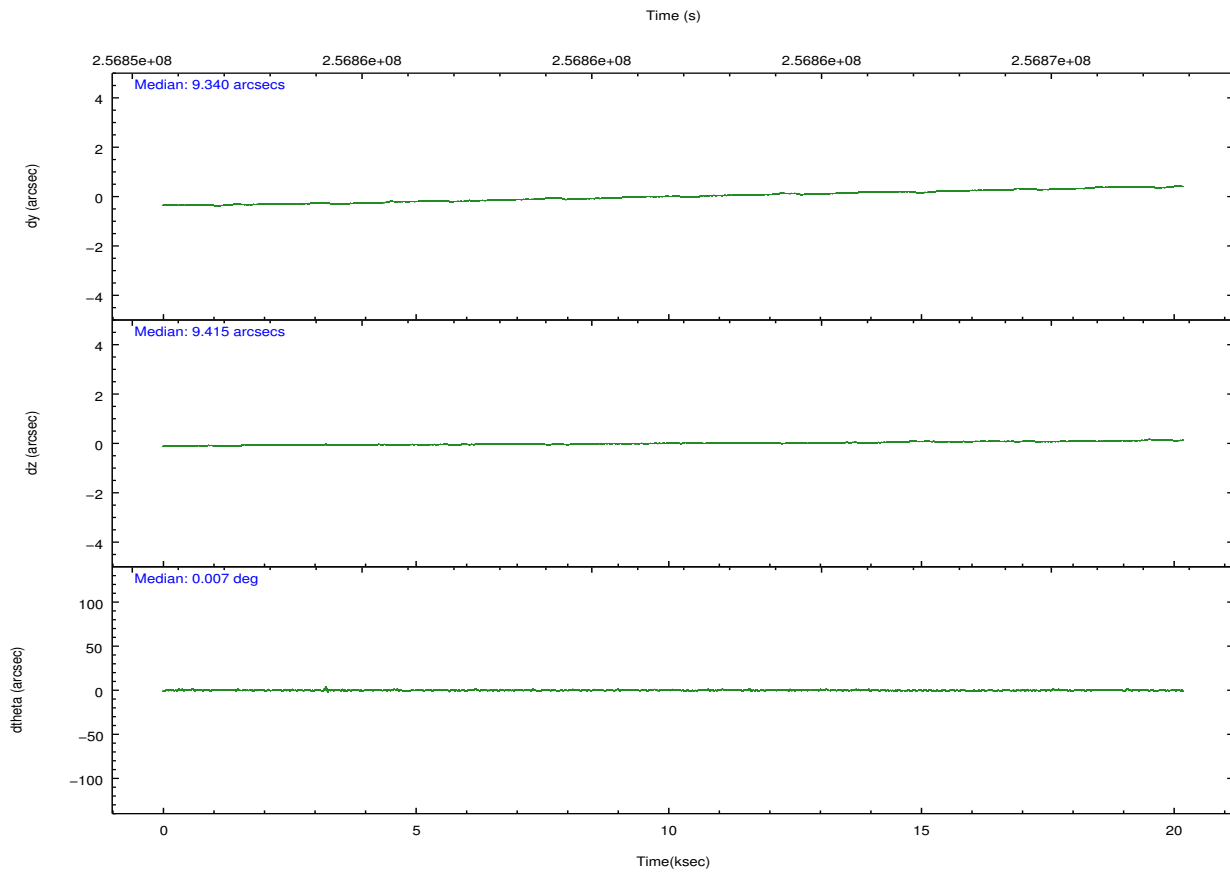
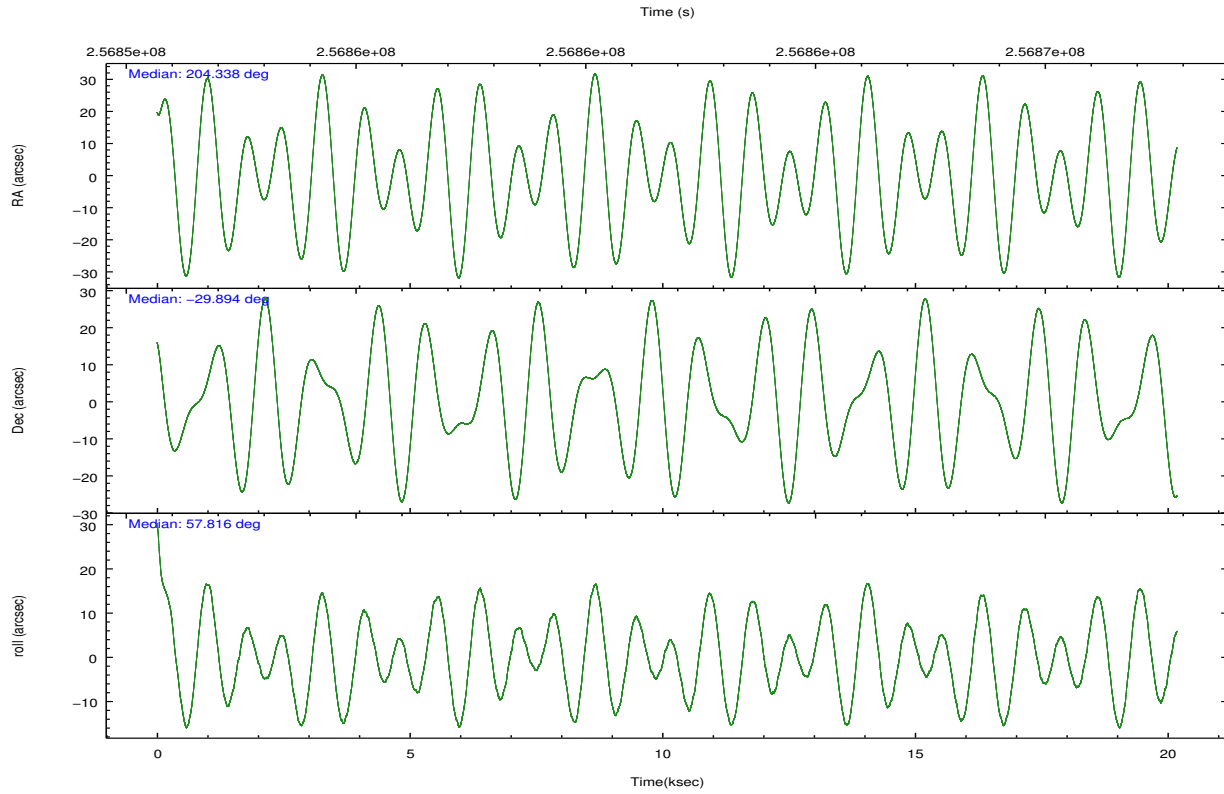
	<b>segment 0</b>
level 1 events	1411083
rejected events	104142
rejected %	7%

## 2.2 Compared Parameters

Parameter	Planned	Actual	Parameter	Planned	Actual
Instrument	HRC	HRC	Obspar format version number	7	7
Detector	HRC-I	HRC-I	Obspar file type	PREDICTED	ACTUAL
Grating	NONE	NONE	Obspar update status	NONE	UPDATED
Data mode	OBSERVING	OBSERVING			
Observation mode	POINTING	POINTING			
[deg] Pointing RA	204.337216	204.3377031073387			
[deg] Pointing Dec	-29.920815	-29.89374987300042			
[deg] Pointing Roll	57.919716	57.82447925270929			
[mm] SIM focus pos	-1.040293	-1.038866356238299			
[mm] SIM defocus	0	0.001426264420575141			
[mm] SIM translation stage pos	126.985494	126.9854943052878			
[mm] SIM translation stage offset	0	-5.413686238853188e-06			
[s] Observation start time (MET)	256851853.184000	256850146.15704			
Observation start date	2006-02-20T19:43:08	2006-02-20T19:15:46			
[s] Observation end time (MET)	256871853.184000	256872713.07058			
Observation end date	2006-02-21T01:16:28	2006-02-21T01:31:53			

## 2.3 Aspect



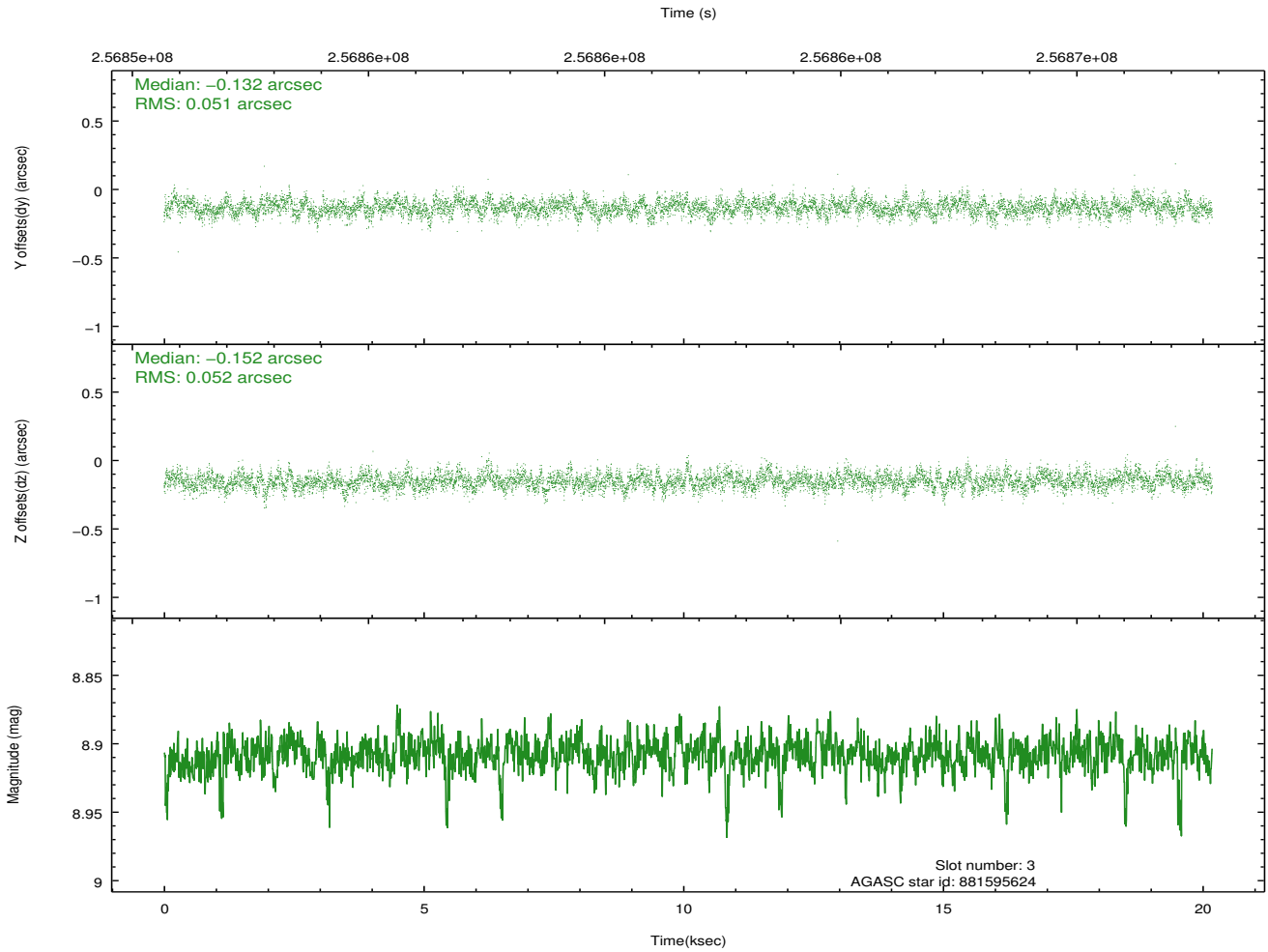
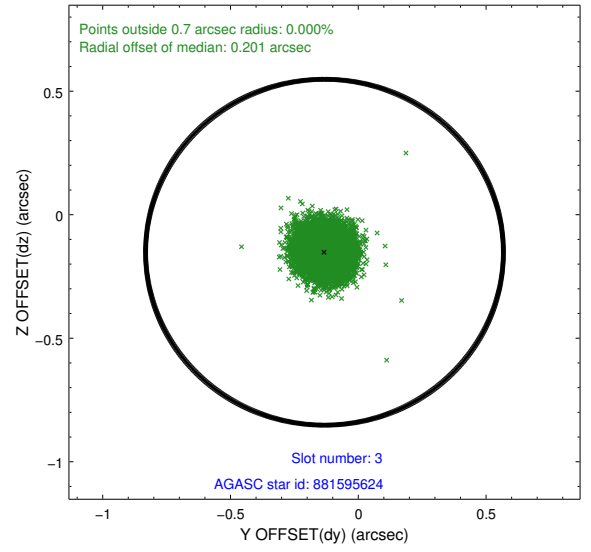
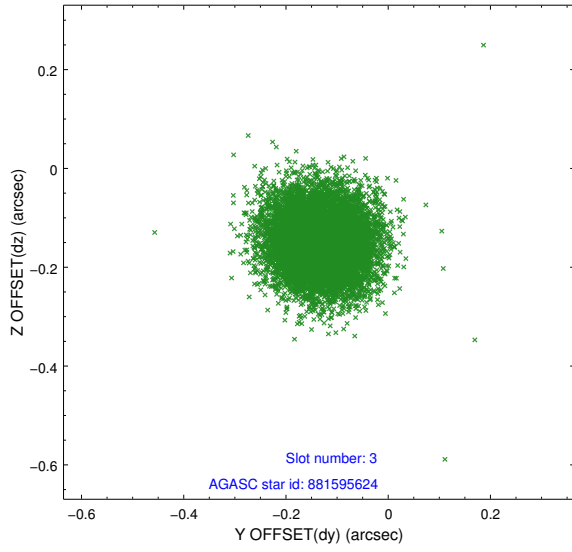


### Slot Statistics

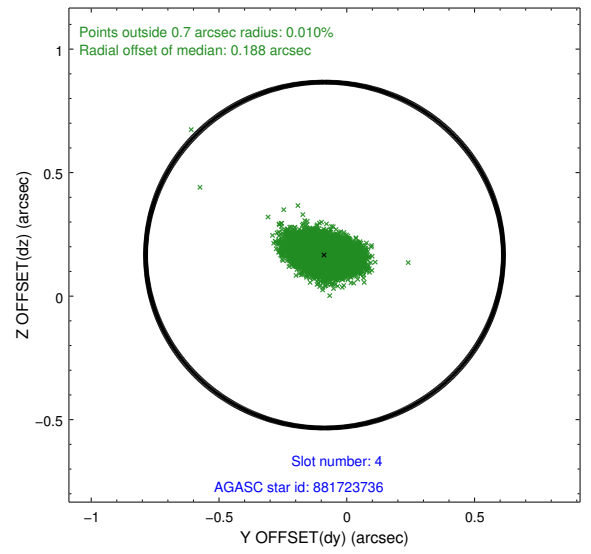
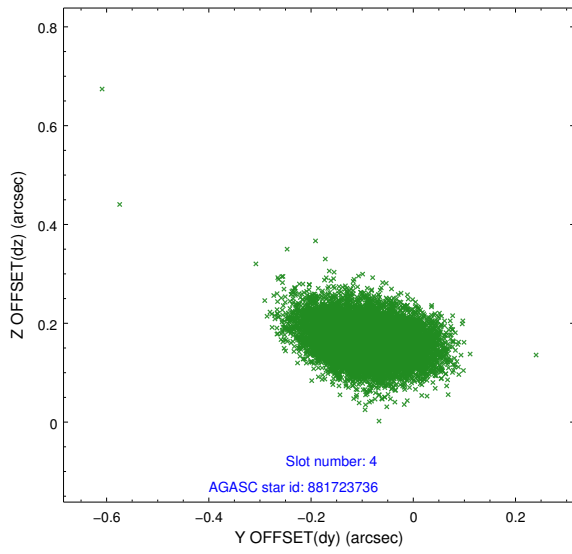
slot	status	id	mag	n_pts	med_dy	med_dz	dr1	dr2	ra	dec	mean_y	mean_z
0	FID	HRC-I-1	7.00	4922	-0.033	0.045	0.010	0.018	0.000000	0.000000	-765.00	-1297.36
1	FID	HRC-I-2	7.04	4922	0.154	-0.094	0.008	0.014	0.000000	0.000000	847.66	-1299.30
2	FID	HRC-I-3	7.10	4923	-0.002	-0.040	0.007	0.012	0.000000	0.000000	-1193.33	1006.85
3	GUIDE	881595624	8.91	9812	-0.132	-0.152	0.077	0.129	204.202876	-29.365867	1468.71	1418.28
4	GUIDE	881723736	7.81	9842	-0.087	0.166	0.080	0.134	205.257294	-29.730831	2098.09	-2079.23
5	GUIDE	952240712	8.77	9841	0.205	0.076	0.085	0.140	204.398863	-30.084893	-398.01	-476.40
6	GUIDE	952372744	7.87	9845	0.069	0.261	0.063	0.102	204.763193	-30.274505	-376.98	-1799.42
7	GUIDE	881595168	8.33	9838	-0.049	-0.351	0.087	0.140	203.920919	-29.377734	960.87	2143.56

## 2.4 Star Slots

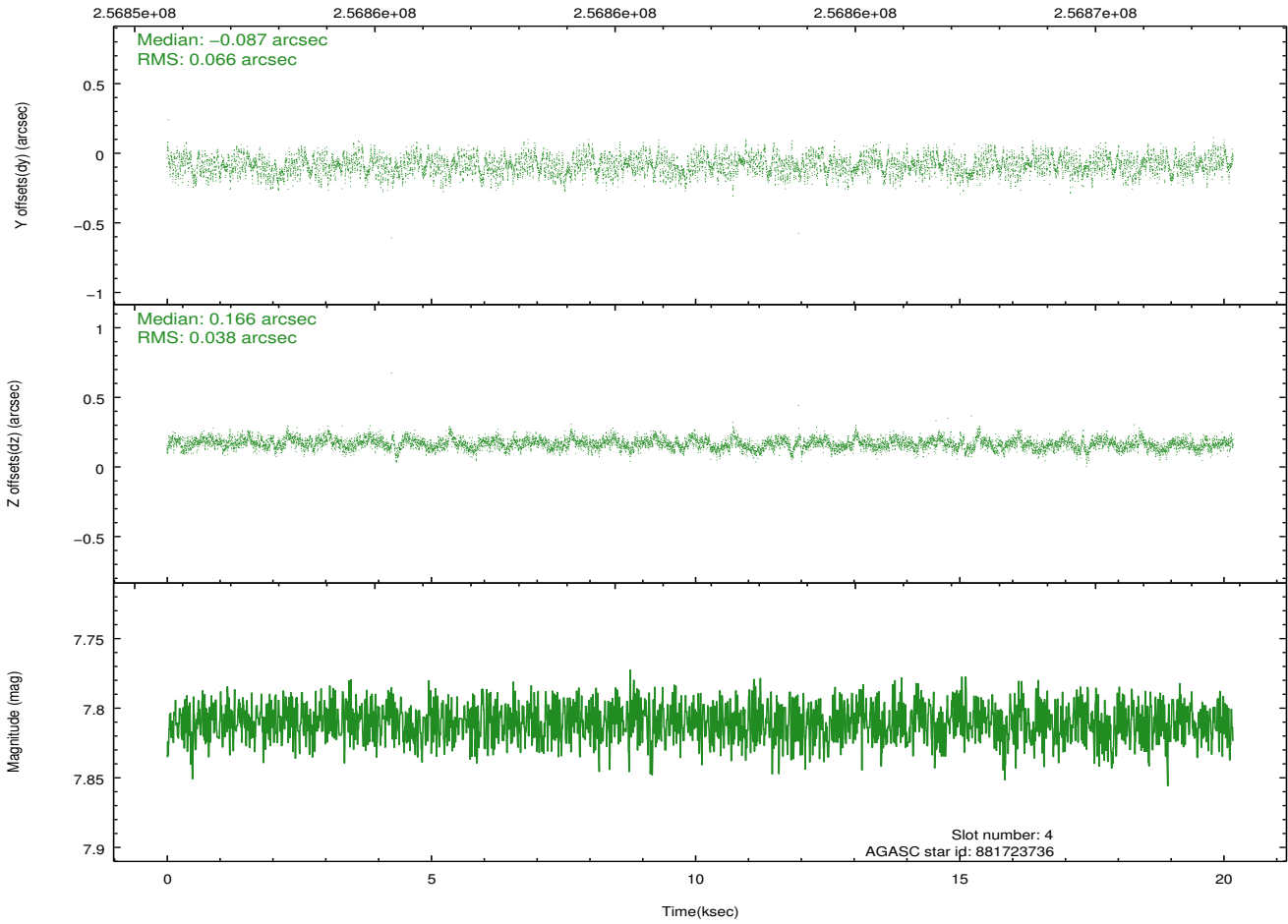
### 2.4.1 Slot 3



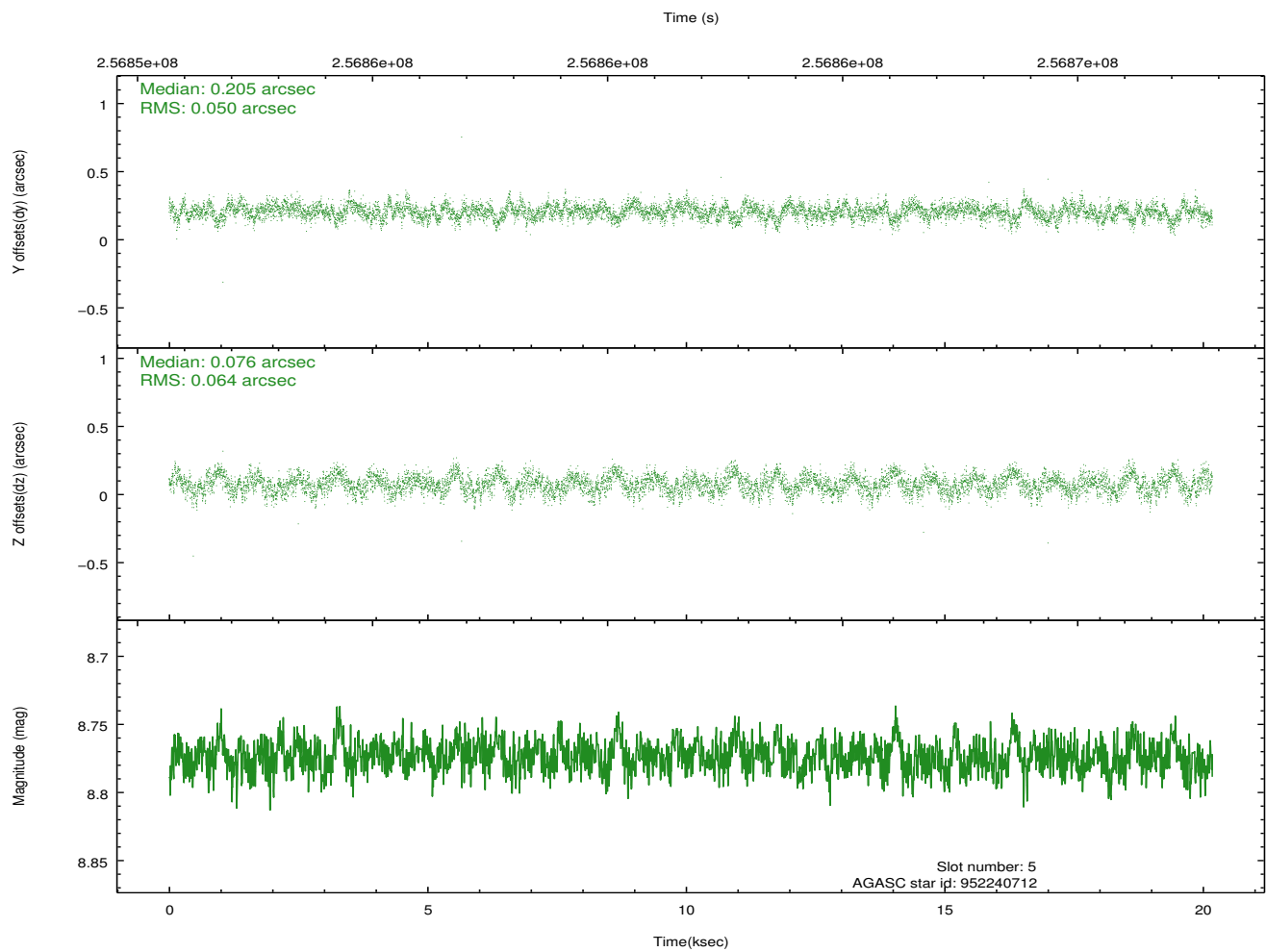
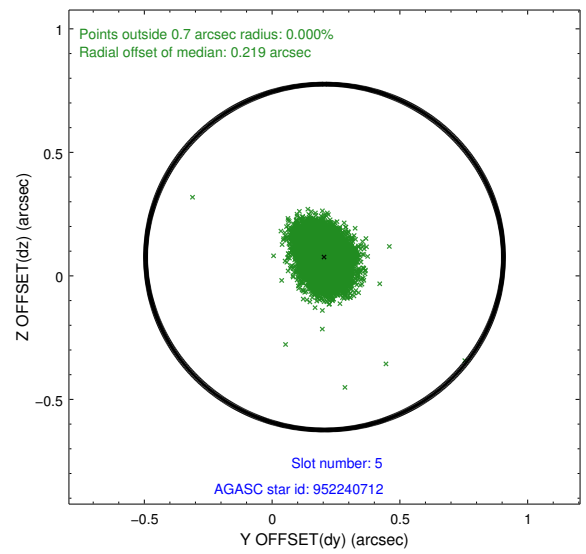
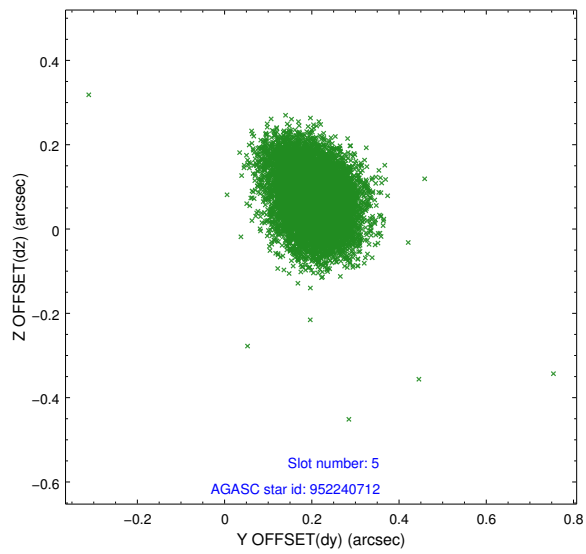
### 2.4.2 Slot 4



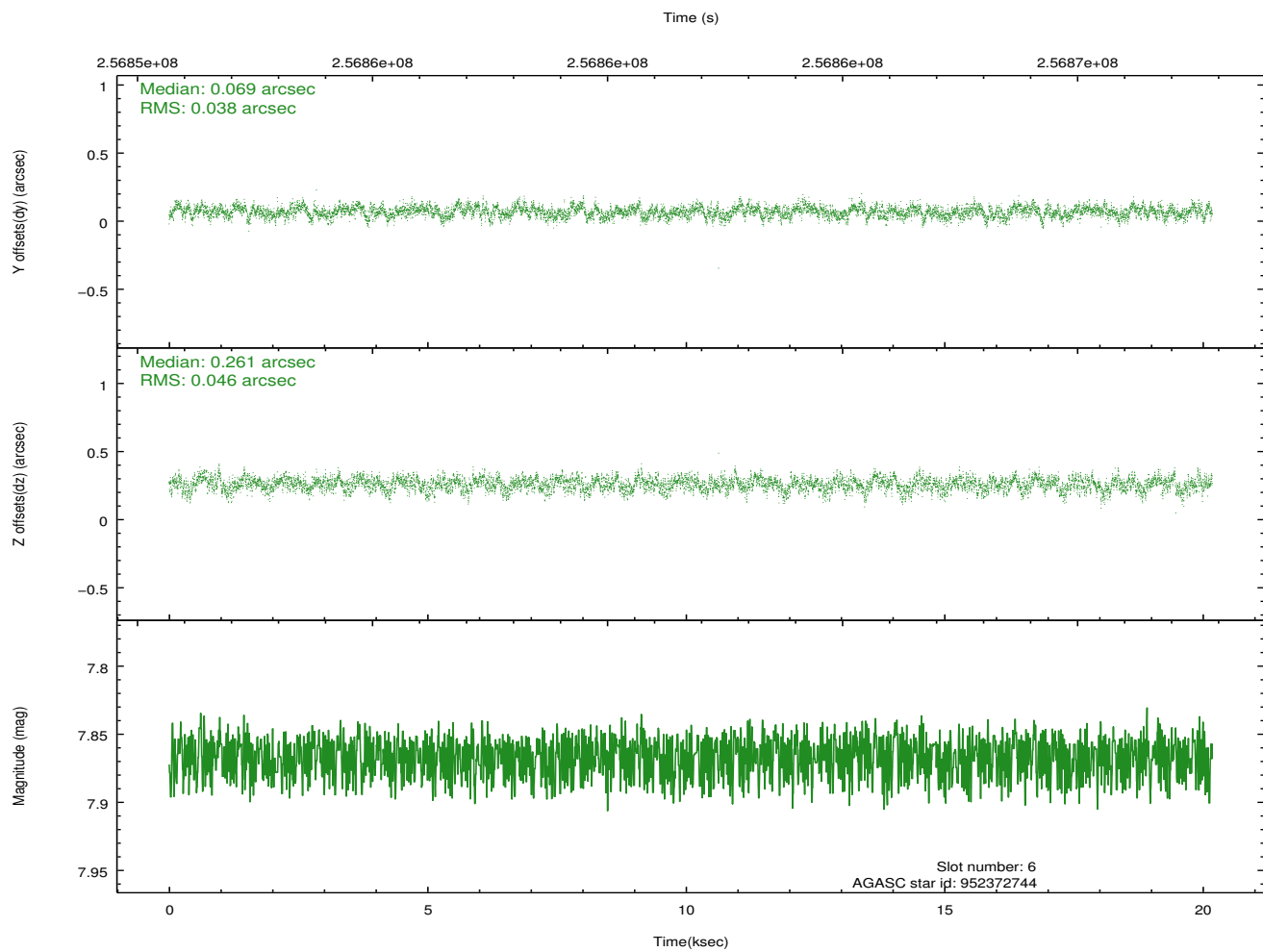
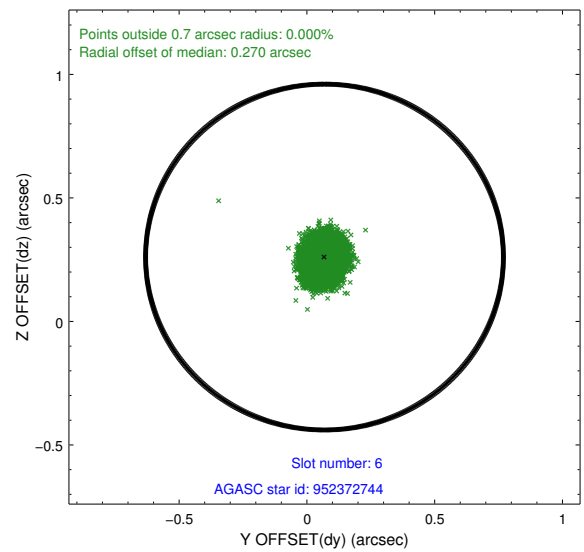
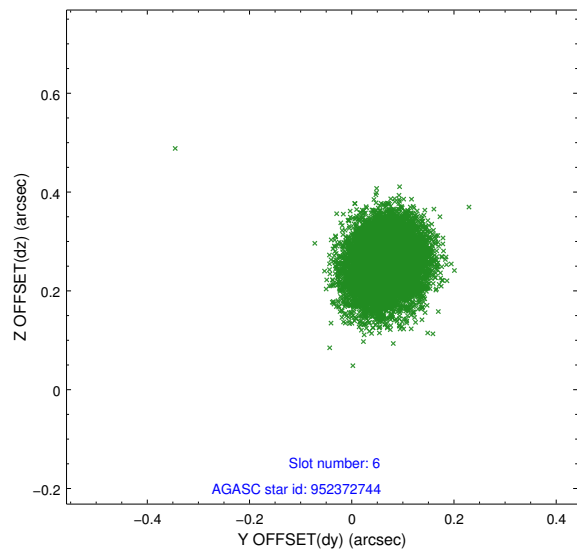
Time (s)



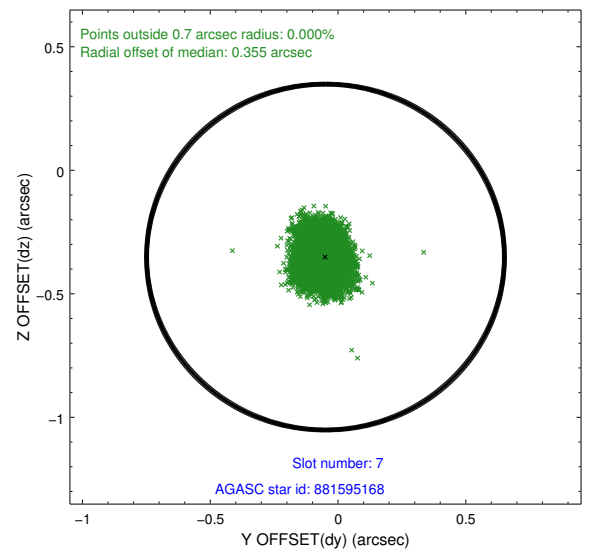
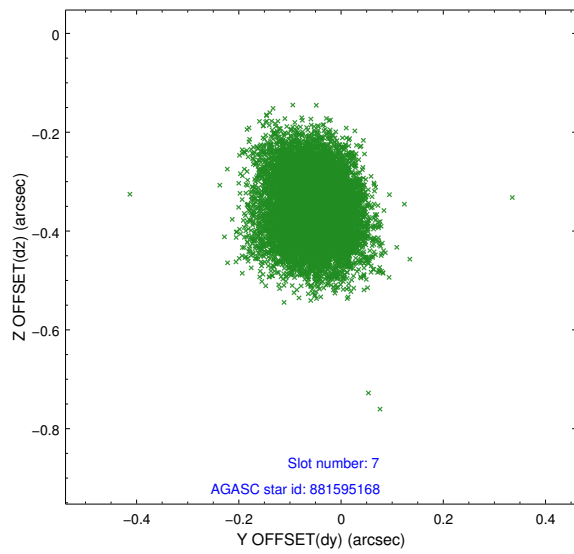
### 2.4.3 Slot 5



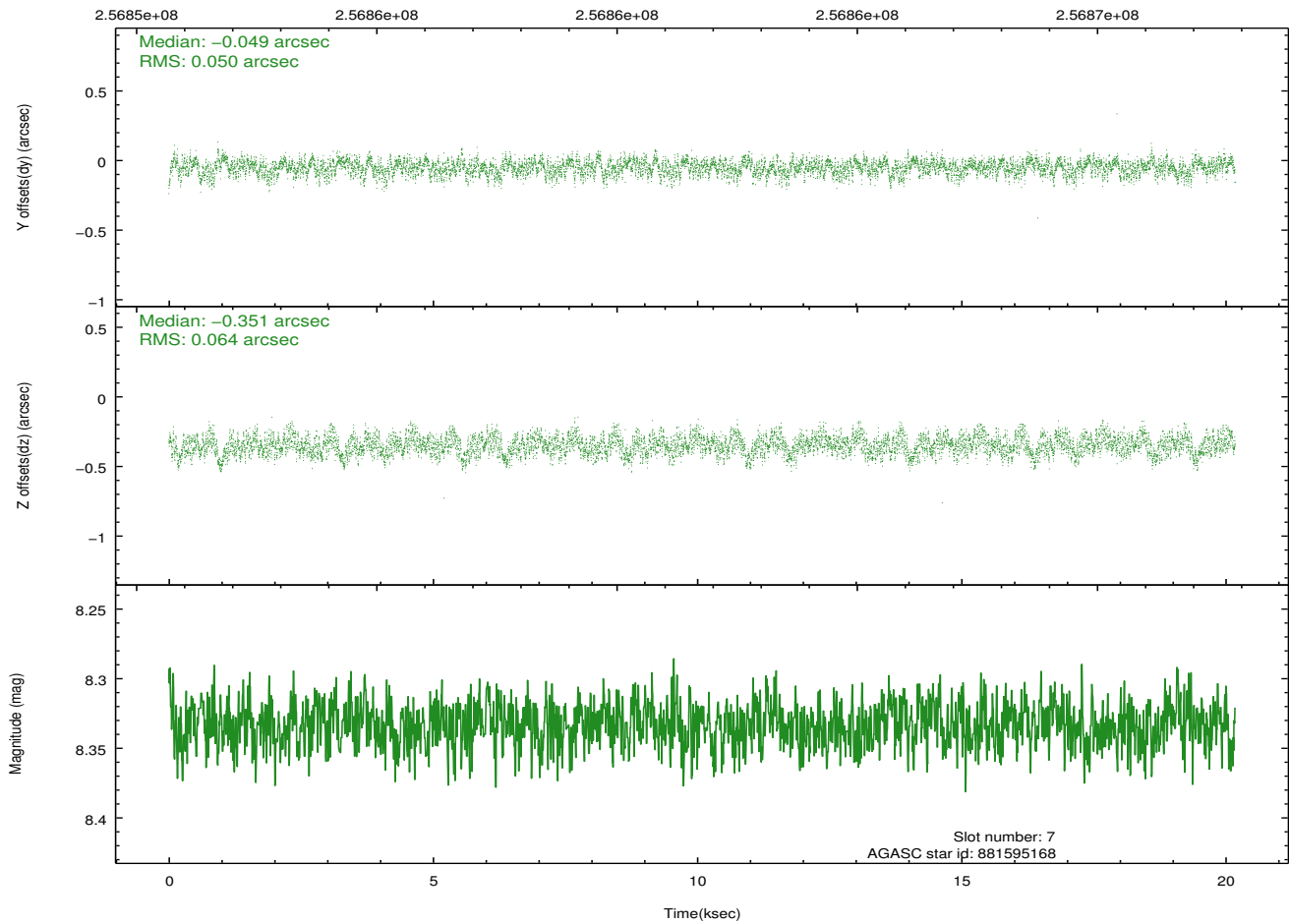
## 2.4.4 Slot 6



## 2.4.5 Slot 7

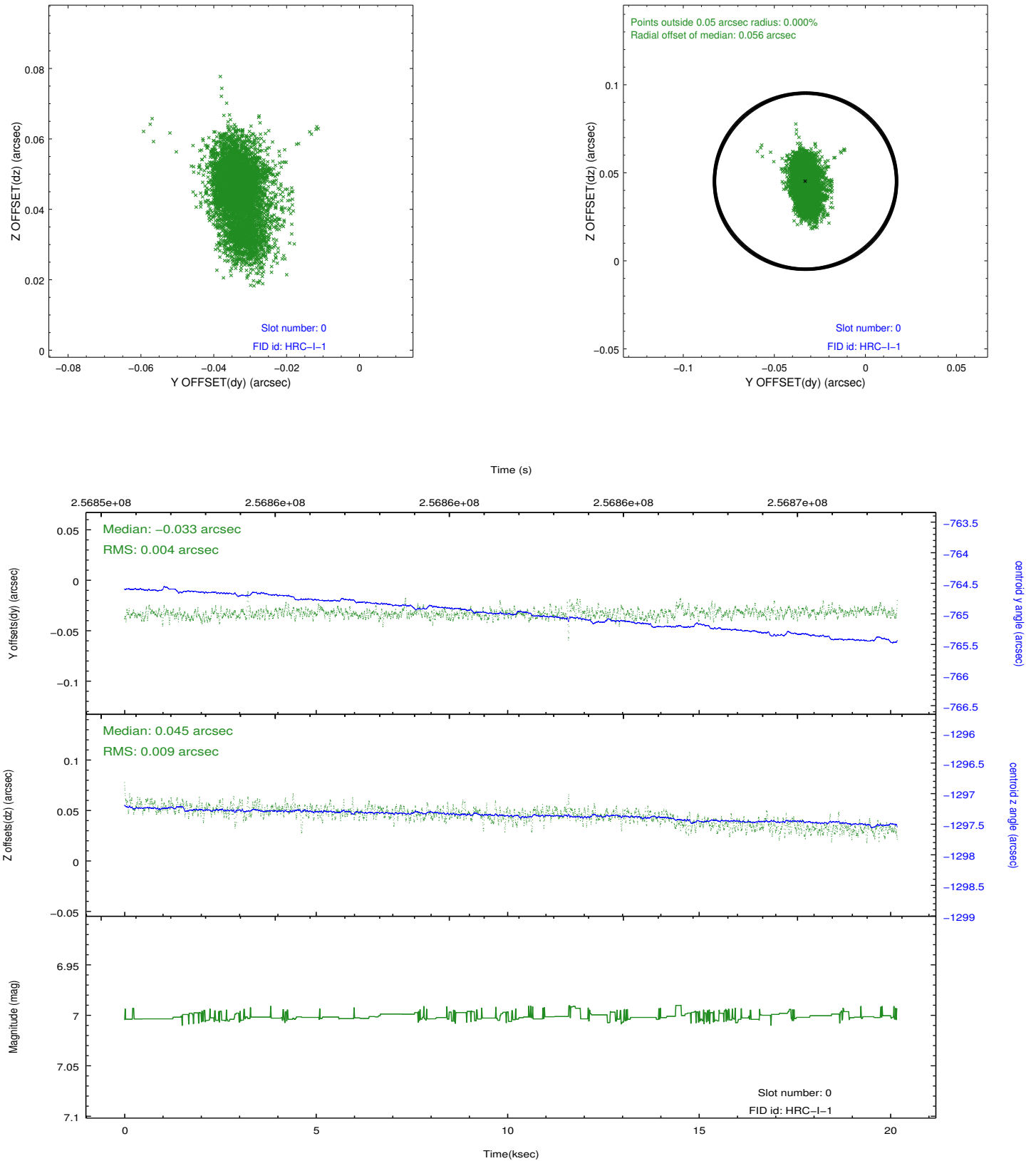


Time (s)

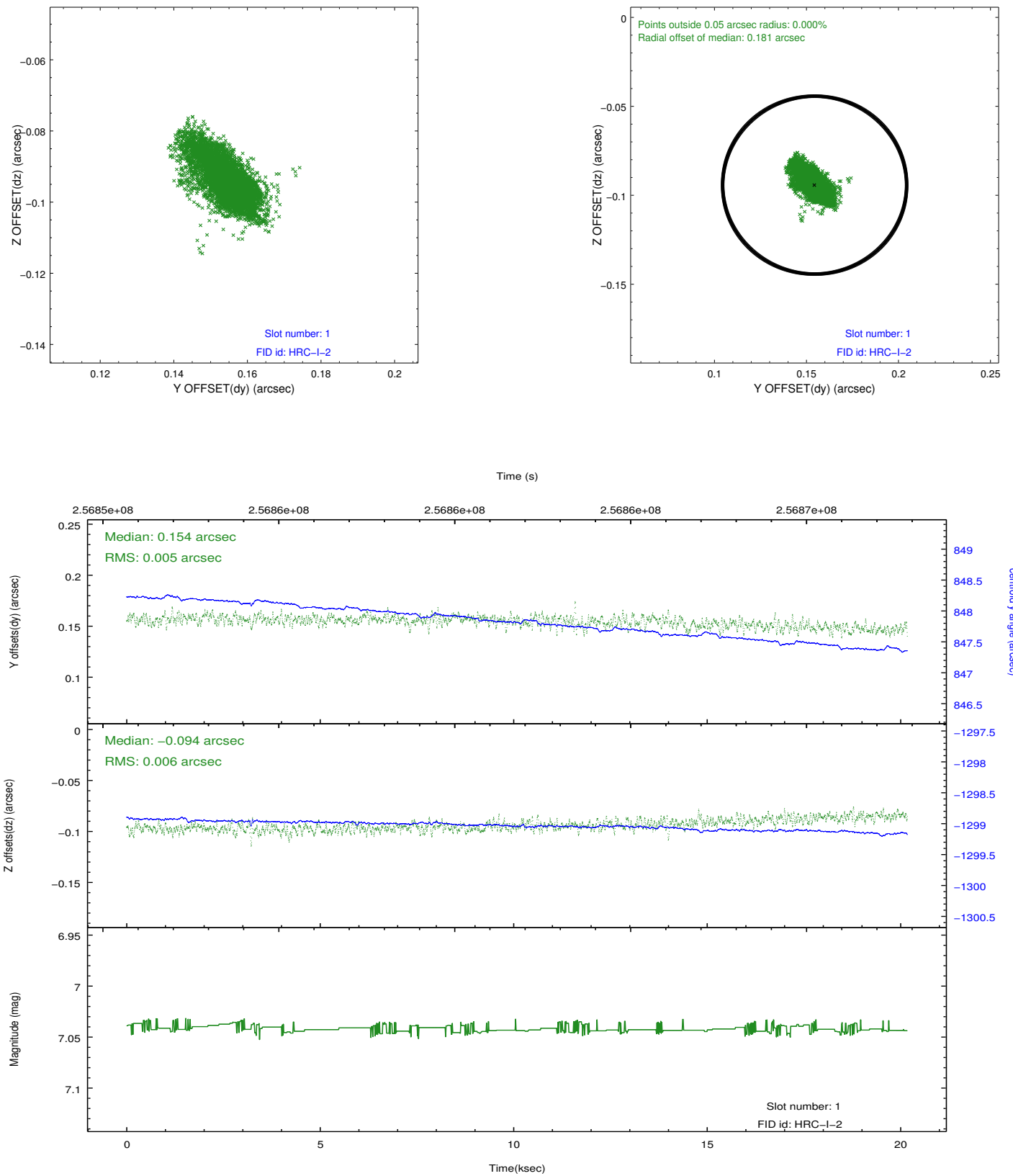


## 2.5 FID Slots

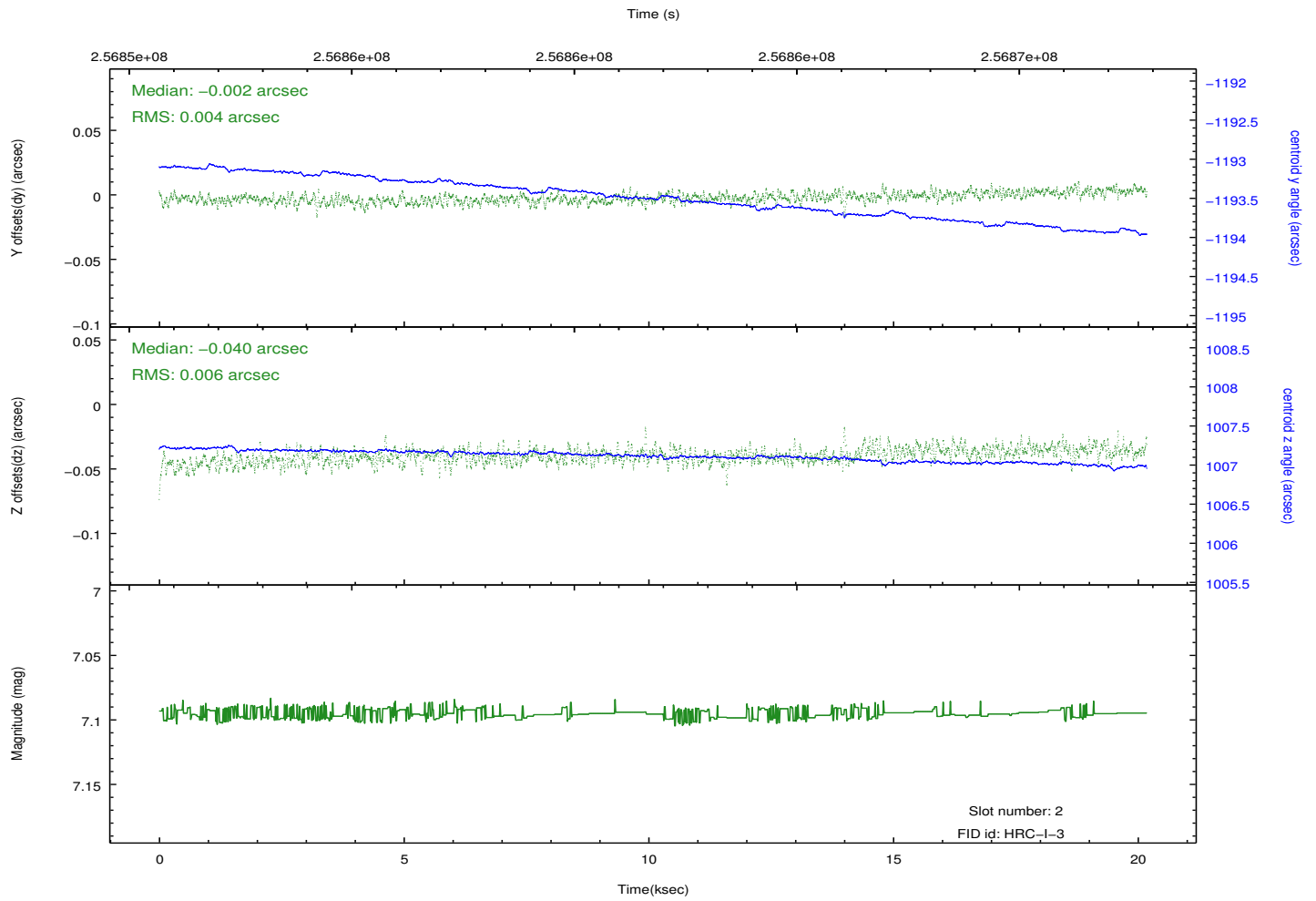
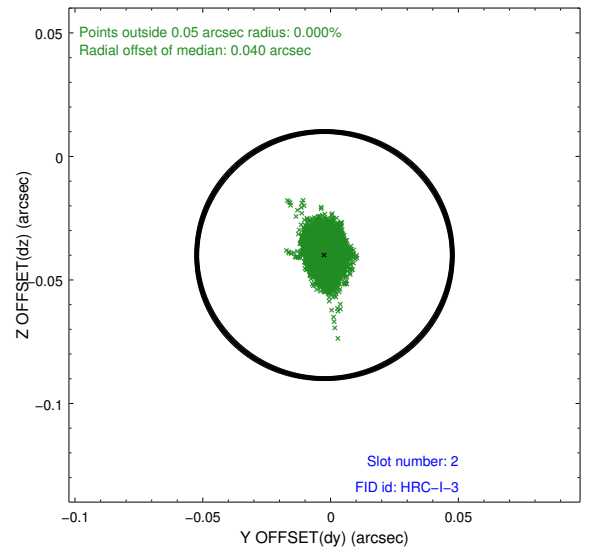
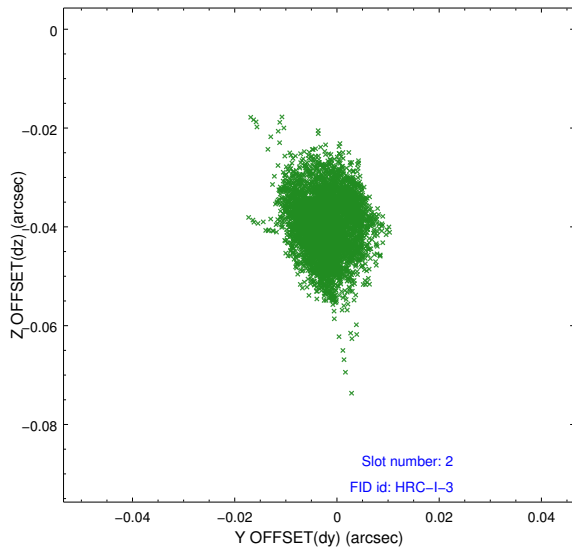
### 2.5.1 Slot 0



## 2.5.2 Slot 1



### 2.5.3 Slot 2



# A Summary

## A.1 Status

V&V Scientist	Jen Lauer
V&V Date (YYYY-MM-DD)	2012.08.12
V&V Edition	1
V&V Disposition and Status	OK
V&V Charge Time	20.1789196

## A.2 Comments

Joint proposal with HST.