

# V&V Reference Report

## L2 ASCDS Version : 8.5.1.1

Observation 6356 - L2 Version 3  
Chandra X-Ray Center

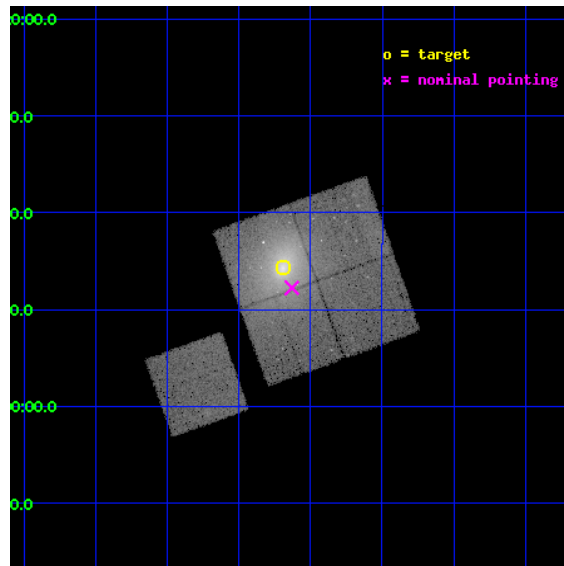
L2 Processing Date : Dec 27 2012

## Contents

<b>1</b>	<b>Front</b>	<b>2</b>
<b>2</b>	<b>OBI</b>	<b>3</b>
2.1	OBI . . . . .	3
2.1.1	Images . . . . .	3
2.1.2	Bias . . . . .	3
2.1.3	Parameters . . . . .	4
2.1.4	Events . . . . .	4
2.2	Compared Parameters . . . . .	5
2.3	Aspect . . . . .	6
2.4	Star Slots . . . . .	9
2.4.1	Slot 3 . . . . .	9
2.4.2	Slot 4 . . . . .	10
2.4.3	Slot 5 . . . . .	11
2.4.4	Slot 6 . . . . .	12
2.4.5	Slot 7 . . . . .	13
2.5	FID Slots . . . . .	14
2.5.1	Slot 0 . . . . .	14
2.5.2	Slot 1 . . . . .	15
2.5.3	Slot 2 . . . . .	16
<b>A</b>	<b>Summary</b>	<b>17</b>
A.1	Status . . . . .	17
A.2	Comments . . . . .	17

# 1 Front

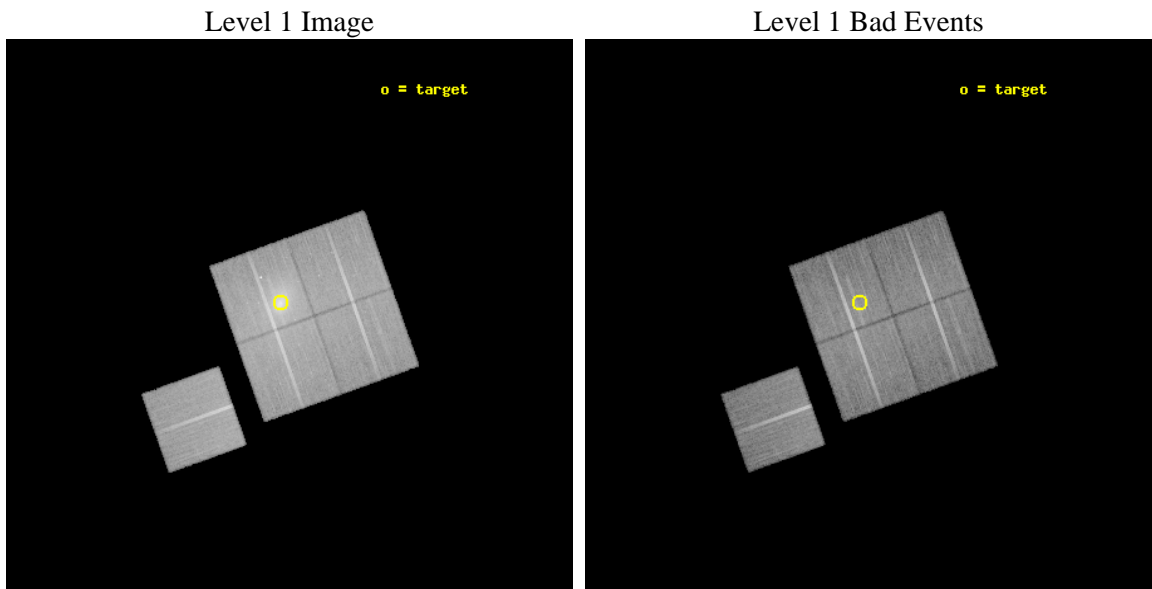
seq_num	800535	Sequence number
obs_id	6356	Observation id
title	A Deep Observation of a Radio-Quiet Cooling Flow	Proposal title
observer	Prof Megan Donahue	Principal investigator
object	Abell 1650	Source name
dtycycle	0	&#160
cycle	P	events from which exps? Prim/Second/Both
ra_targ	194.672083	Observer's specified target RA [deg]
dec_targ	-1.761389	Observer's specified target Dec [deg]
ra_nom	194.65757494371	Nominal RA [deg]
dec_nom	-1.796164263996	Nominal Dec [deg]
roll_nom	250.29918256308	Nominal Roll [deg]
revision	3	Processing version of data
ontime	37044.917978346	Sum of GTIs [s]
livetime	36560.898852887	Livetime [s]
ontime0	37051.199928731	Sum of GTIs [s]
ontime1	37048.058968484	Sum of GTIs [s]
ontime2	37038.636017889	Sum of GTIs [s]
ontime3	37044.917978346	Sum of GTIs [s]
ontime6	37048.058968484	Sum of GTIs [s]
l2events	214406	Number of level 2 events



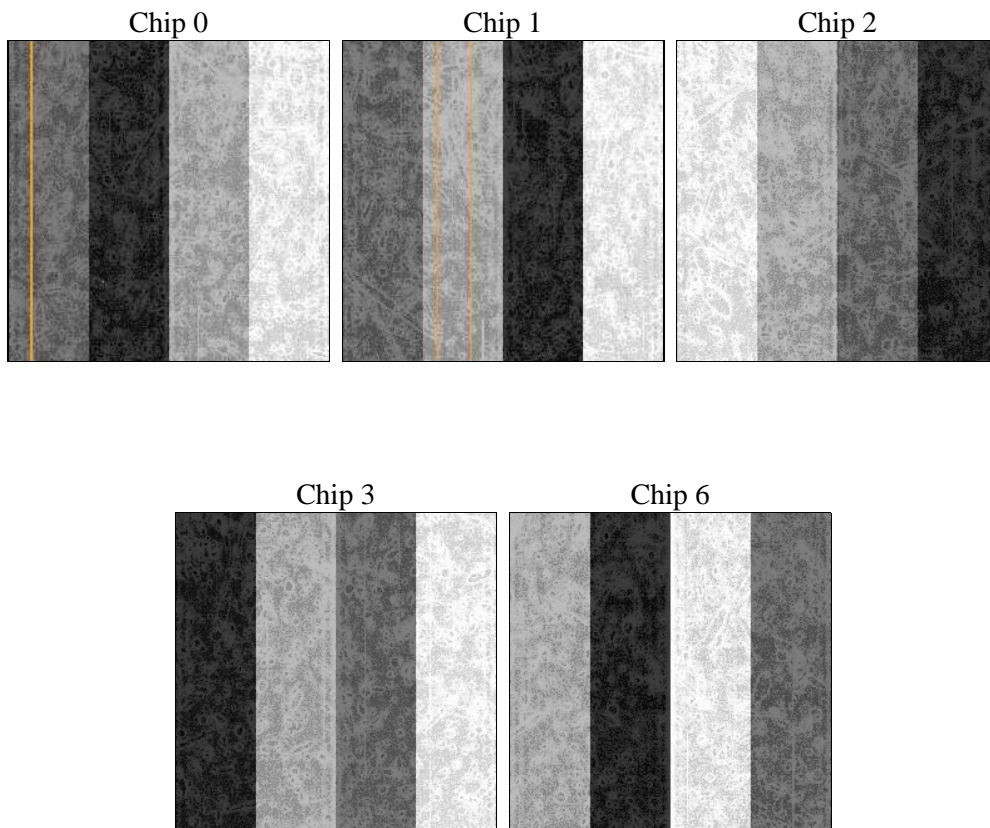
## 2 OBI

### 2.1 OBI

#### 2.1.1 Images



#### 2.1.2 Bias



### 2.1.3 Parameters

obi_num	0	Obi number	sched_exp_time	37000.000000	[s] Scheduled observation exposure time
ascdsver	8.5.1.1	Processing system revision	ontime	37044.917978346	Sum of GTIs [s]
caldbver	4.5.5	&#160	ontime0	37051.199928731	Sum of GTIs [s]
date	2012-12-27T04:32:59	Date and time of file creation	ontime1	37048.058968484	Sum of GTIs [s]
revision	3	Processing version of data	ontime2	37038.636017889	Sum of GTIs [s]
			ontime3	37044.917978346	Sum of GTIs [s]
			ontime6	37048.058968484	Sum of GTIs [s]
			l1events	1214899	Number of level 1 events

### 2.1.4 Events

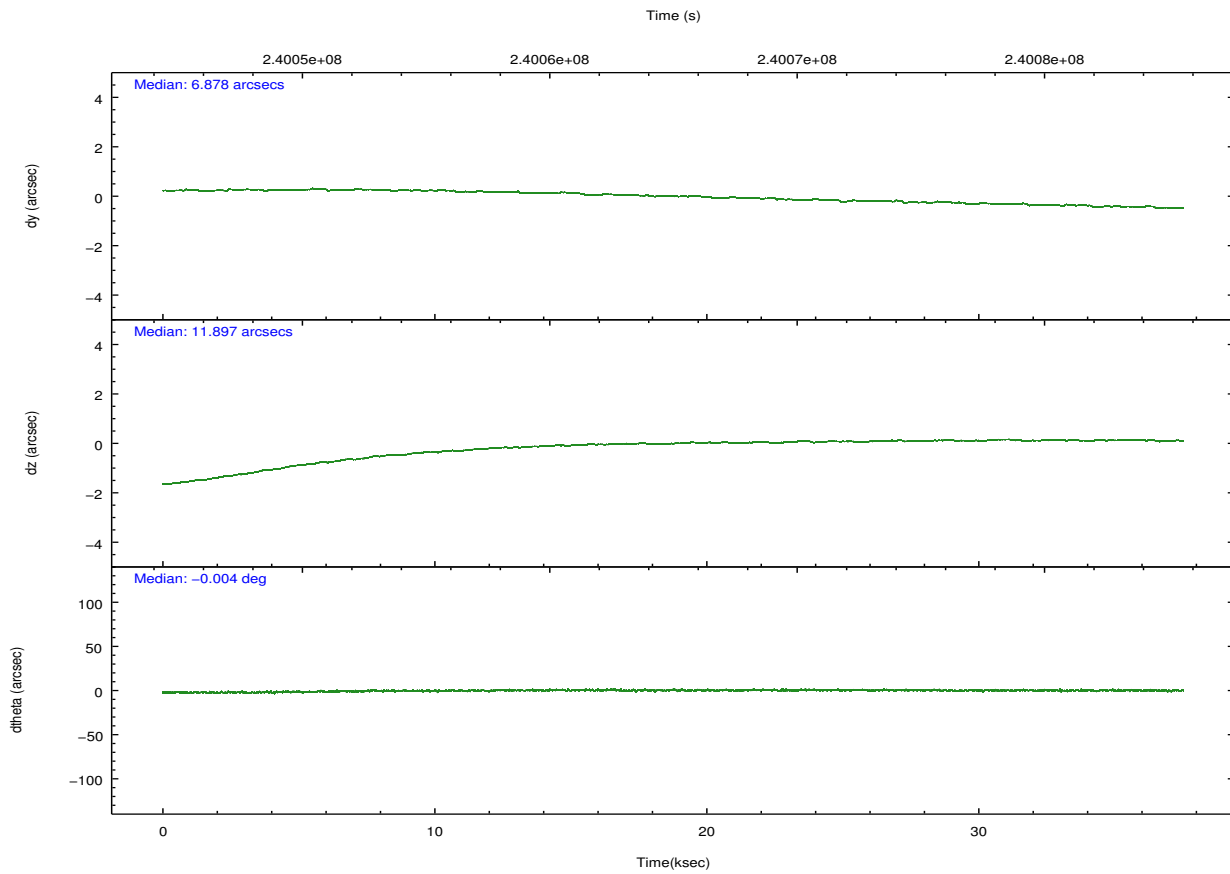
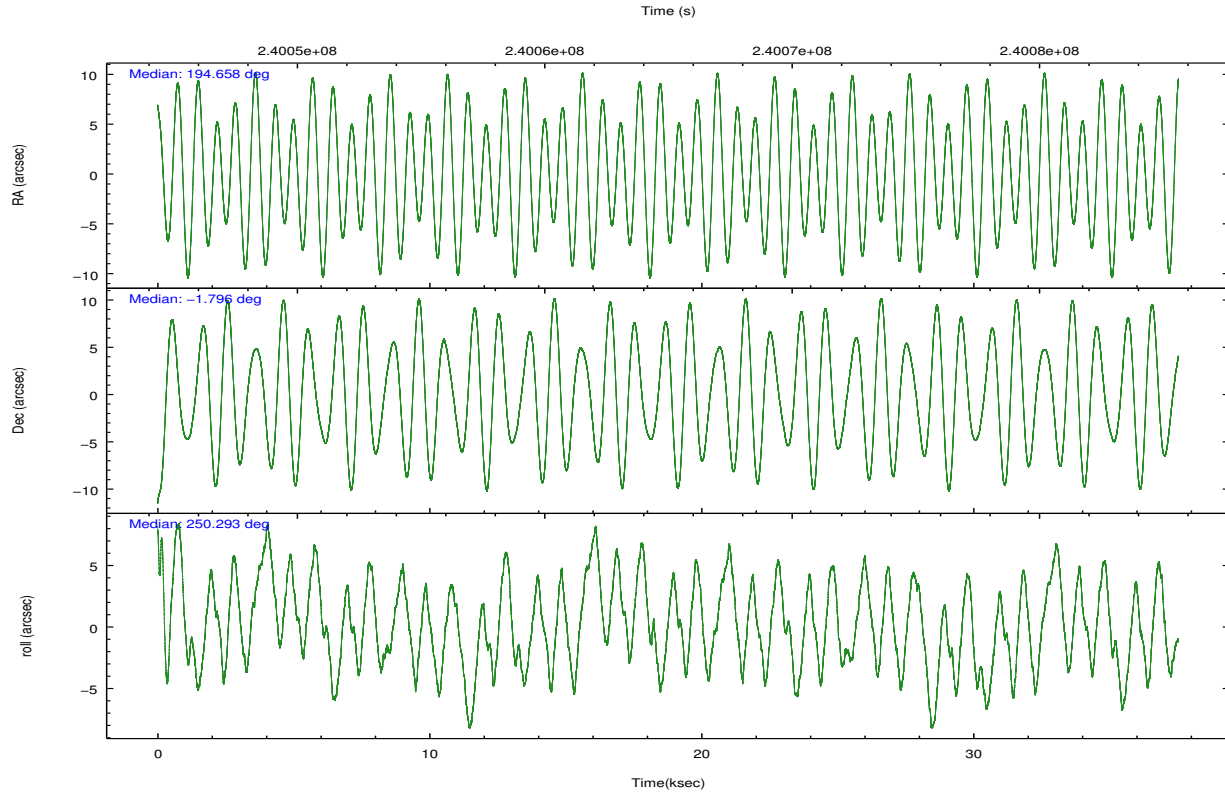
	ccd 0	ccd 1	ccd 2	ccd 3	ccd 6
level 1 events	207414	215679	243300	327559	220947
rejected events	182365	182106	209474	205887	197018
rejected %	87%	84%	86%	62%	89%

	ccd 0	ccd 1	ccd 2	ccd 3	ccd 6
grade 0 events	9819	16091	17829	90394	9008
	4%	7%	7%	27%	4%
grade 1 events	118	132	197	530	111
	0%	0%	0%	0%	0%
grade 2 events	5617	6453	6235	14042	4979
	2%	2%	2%	4%	2%
grade 3 events	2732	3056	2723	5299	2575
	1%	1%	1%	1%	1%
grade 4 events	2459	2944	2776	5414	2572
	1%	1%	1%	1%	1%
grade 5 events	7984	8758	7423	9494	8941
	3%	4%	3%	2%	4%
grade 6 events	4426	5032	4270	6544	4800
	2%	2%	1%	1%	2%
grade 7 events	174259	173213	201847	195842	187961
	84%	80%	82%	59%	85%

## 2.2 Compared Parameters

Parameter	Planned	Actual	Parameter	Planned	Actual
Instrument	ACIS	ACIS	Obspar format version number	7	7
Detector	ACIS-01236	ACIS-01236	Obspar file type	PREDICTED	ACTUAL
Grating	NONE	NONE	Obspar update status	NONE	UPDATED
Data mode	VFAINT	VFAINT	Number of optional ACIS chips dropped	0	0
Observation mode	POINTING	POINTING	On-chip summing requested	N	N
[deg] Pointing RA	194.652578	194.6575749437075	Subarray requested	NONE	NONE
[deg] Pointing Dec	-1.769220	-1.796164263996039	Alternating exposures requested	N	N
[deg] Pointing Roll	250.090336	250.2991825630751	[s] Primary exposure time	0.000000	3.1
[mm] SIM focus pos	-0.782348	-0.7809083437167272			
[mm] SIM defocus	0	0.001439871863259334			
[mm] SIM translation stage pos	-227.592463	-227.5958210972112			
[mm] SIM translation stage offset	-6	-5.996631905718488			
[s] Observation start time (MET)	240046749.184000	240045643.99387			
Observation start date	2005-08-10T07:38:05	2005-08-10T07:20:43			
[s] Observation end time (MET)	240083749.184000	240084623.20816			
Observation end date	2005-08-10T17:54:45	2005-08-10T18:10:23			
Read mode	TIMED	TIMED			

## 2.3 Aspect



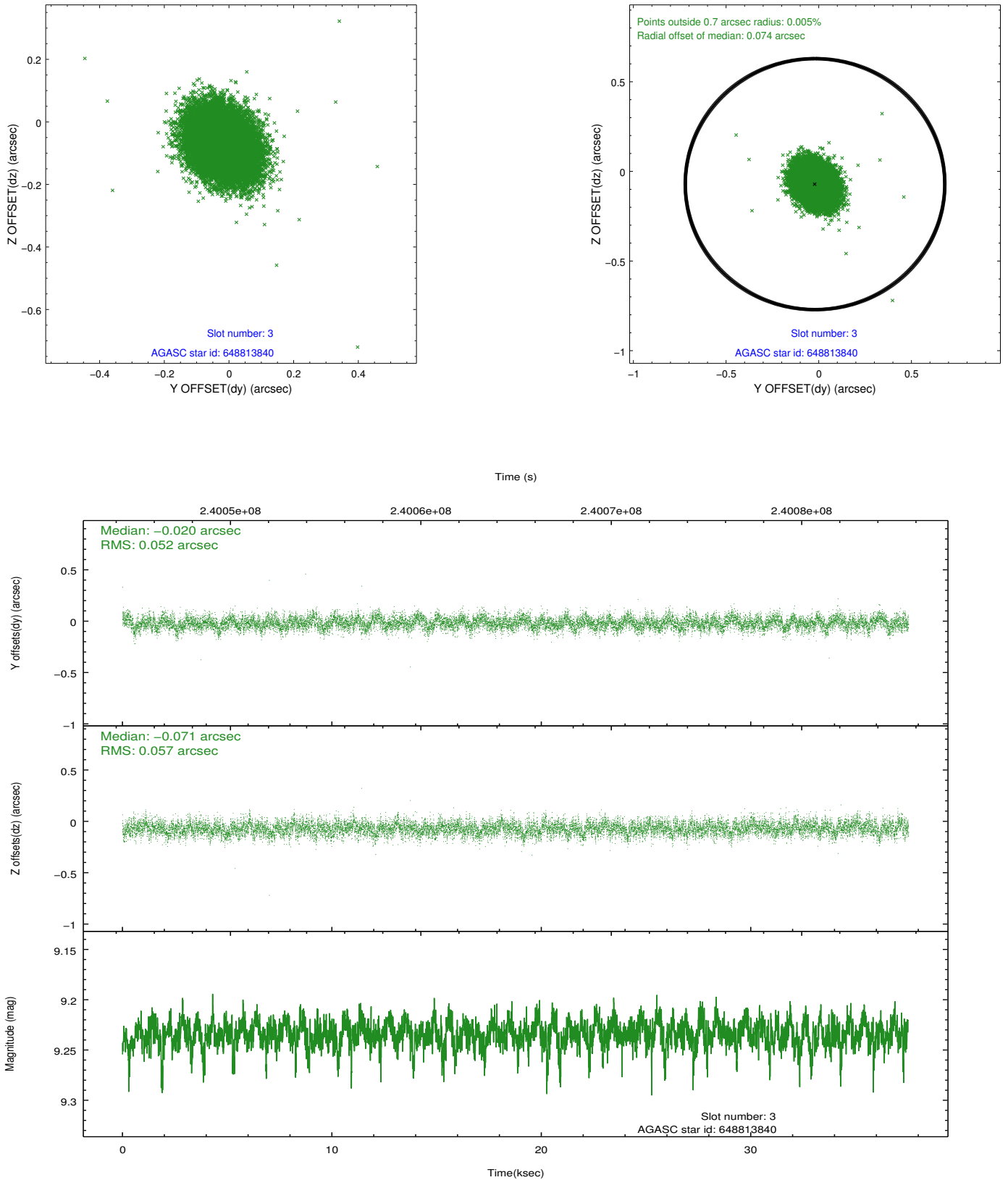
### Slot Statistics

slot	status	id	mag	n_pts	med_dy	med_dz	dr1	dr2	ra	dec	mean_y	mean_z
0	FID	ACIS-I-1	7.24	9152	0.072	-0.157	0.025	0.054	0.000000	0.000000	932.82	-958.38
1	FID	ACIS-I-4	7.15	9153	0.014	0.098	0.018	0.037	0.000000	0.000000	2152.44	942.43
2	FID	ACIS-I-5	7.21	9154	-0.186	0.130	0.016	0.027	0.000000	0.000000	-1815.45	939.49
3	GUIDE	648813840	9.23	18296	-0.020	-0.071	0.081	0.134	194.717621	-1.945504	517.51	436.75
4	GUIDE	648813864	8.82	18301	-0.153	-0.172	0.082	0.136	194.235605	-1.103465	-1741.93	-2227.34
5	GUIDE	648815736	9.93	18295	0.156	-0.103	0.140	0.227	194.100949	-2.130858	1900.67	-1422.26
6	GUIDE	648815800	9.55	18289	0.171	0.146	0.109	0.177	194.475560	-2.052849	1177.33	-250.75
7	GUIDE	649731776	10.02	18290	-0.154	0.208	0.187	0.319	195.271404	-1.336449	-2223.02	1563.91

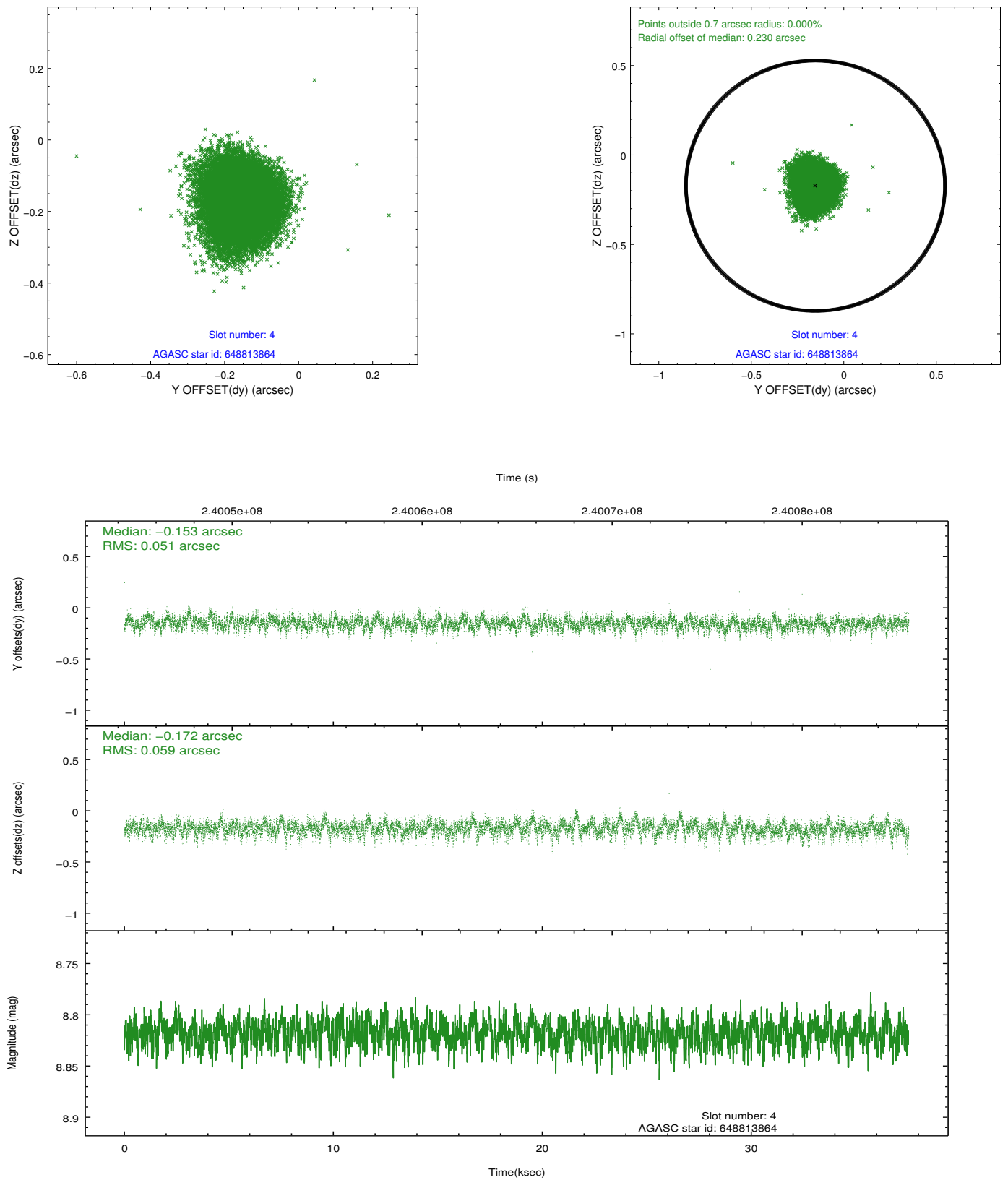
∞

## 2.4 Star Slots

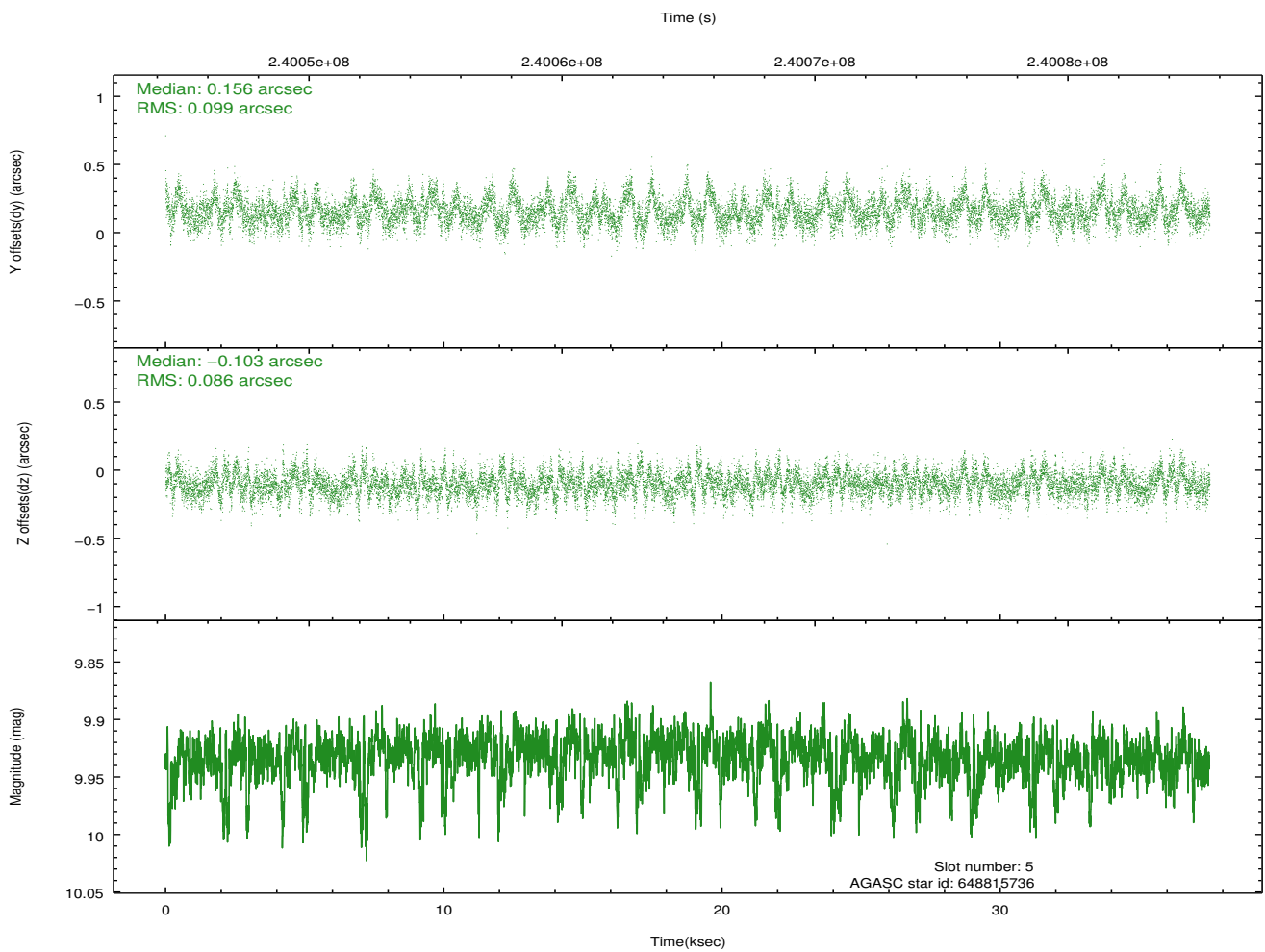
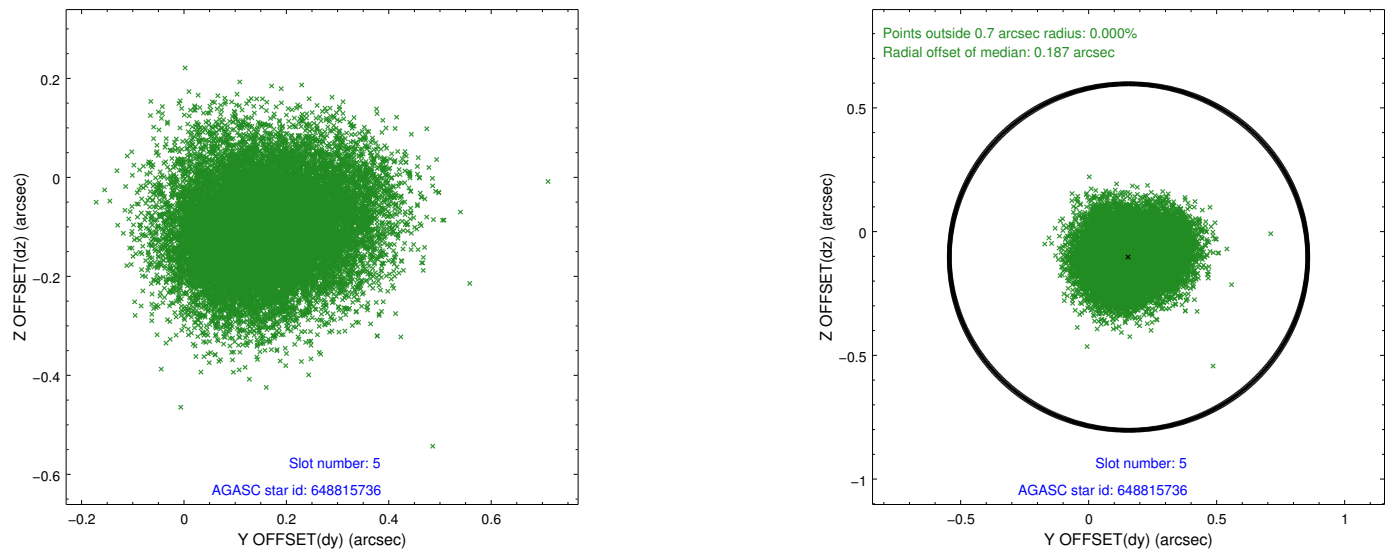
### 2.4.1 Slot 3



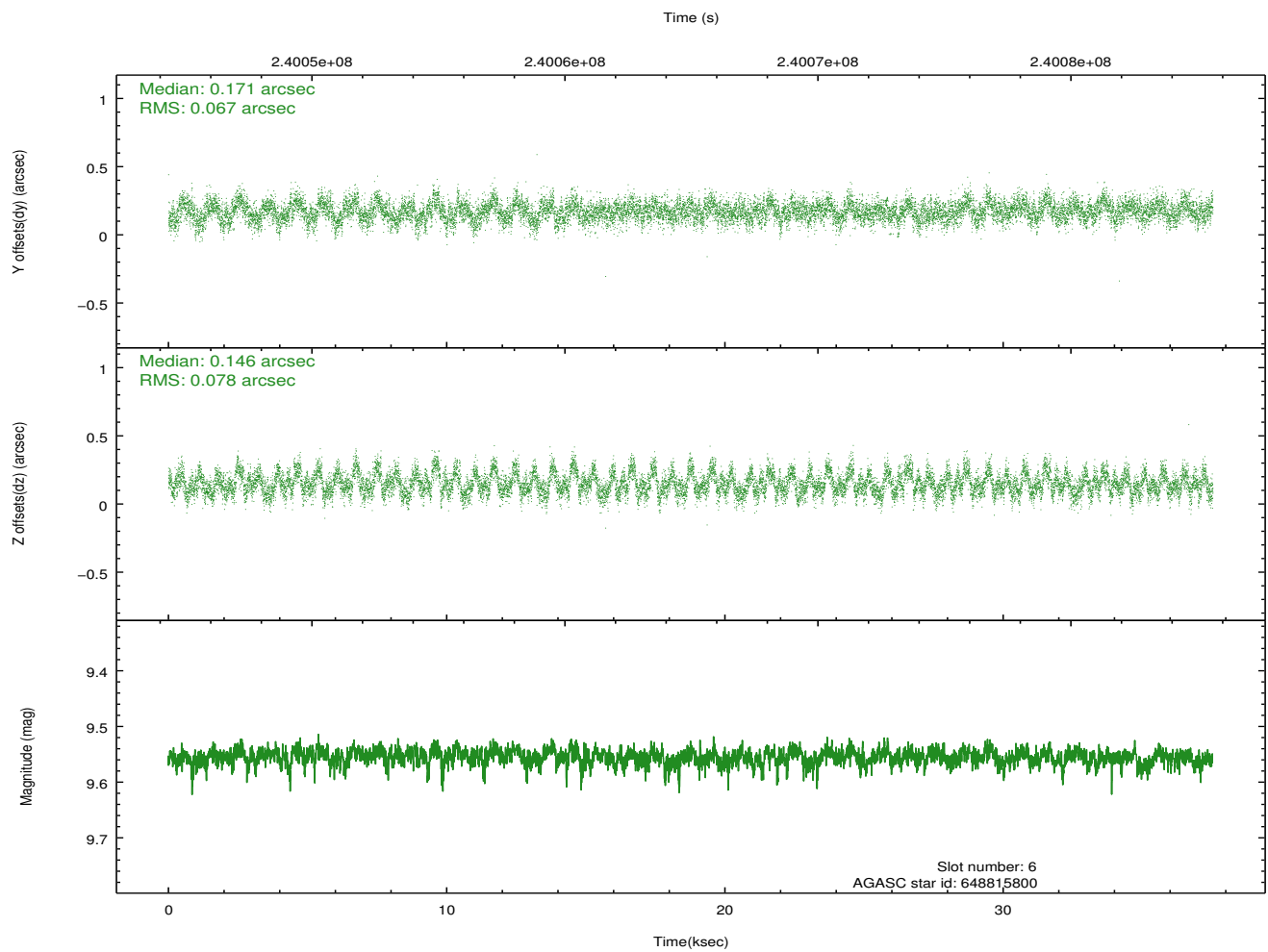
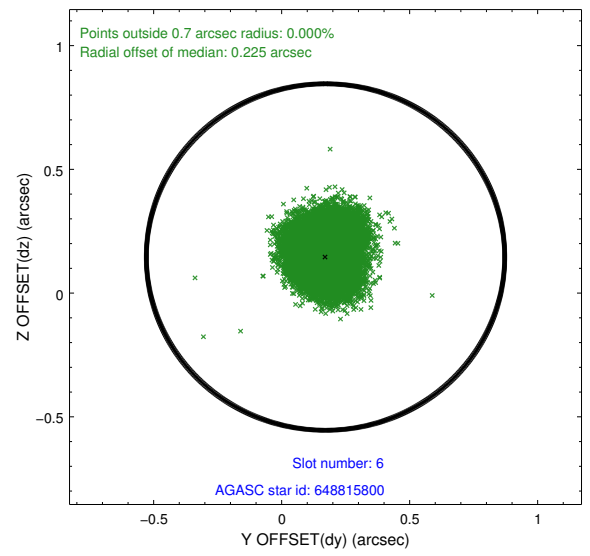
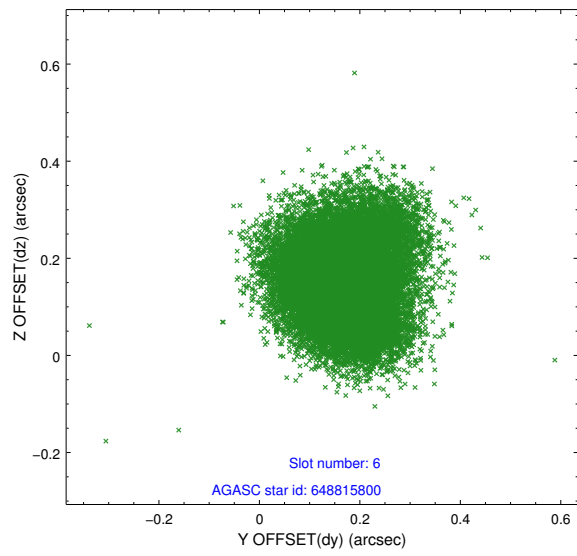
## 2.4.2 Slot 4



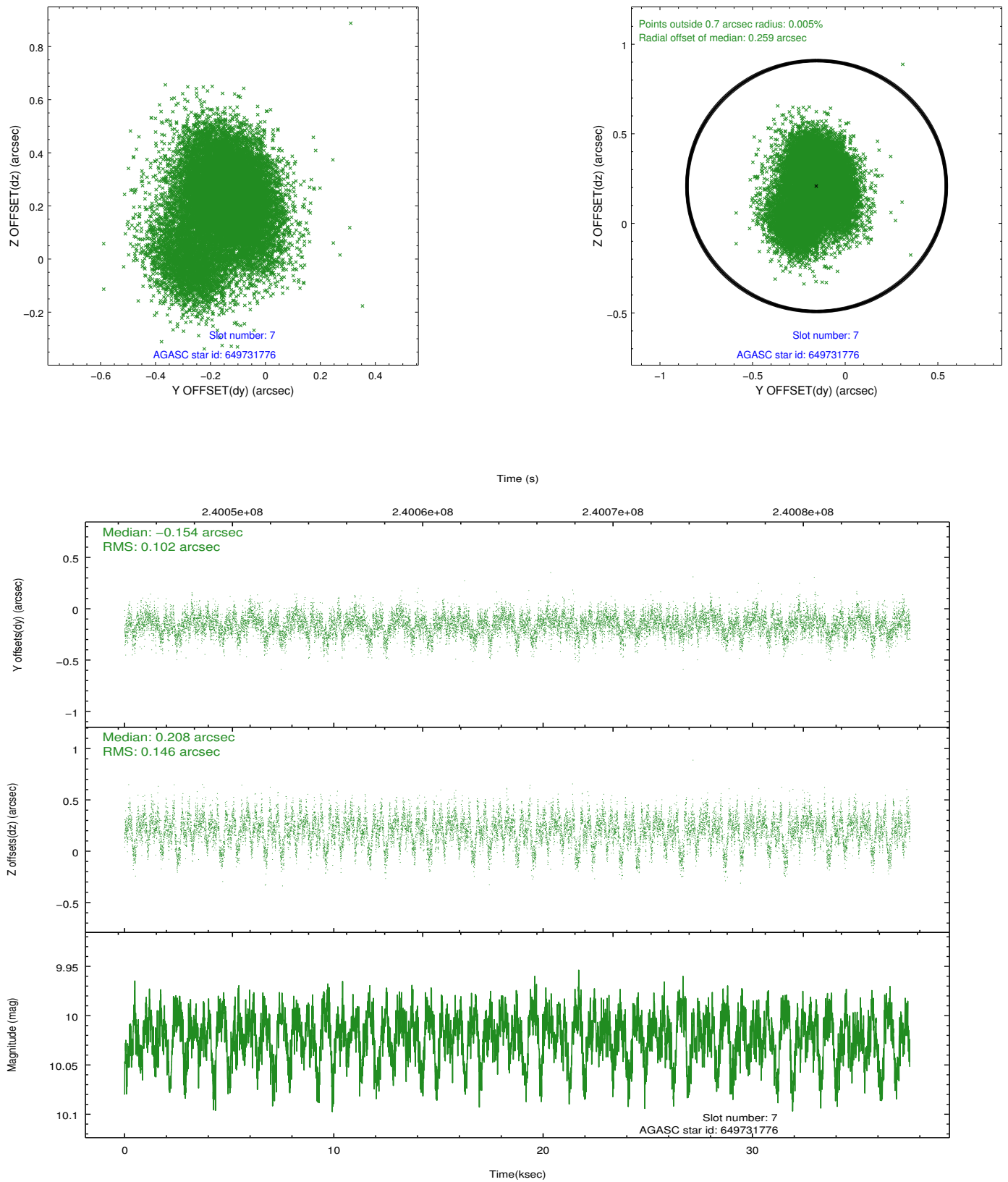
### 2.4.3 Slot 5



## 2.4.4 Slot 6

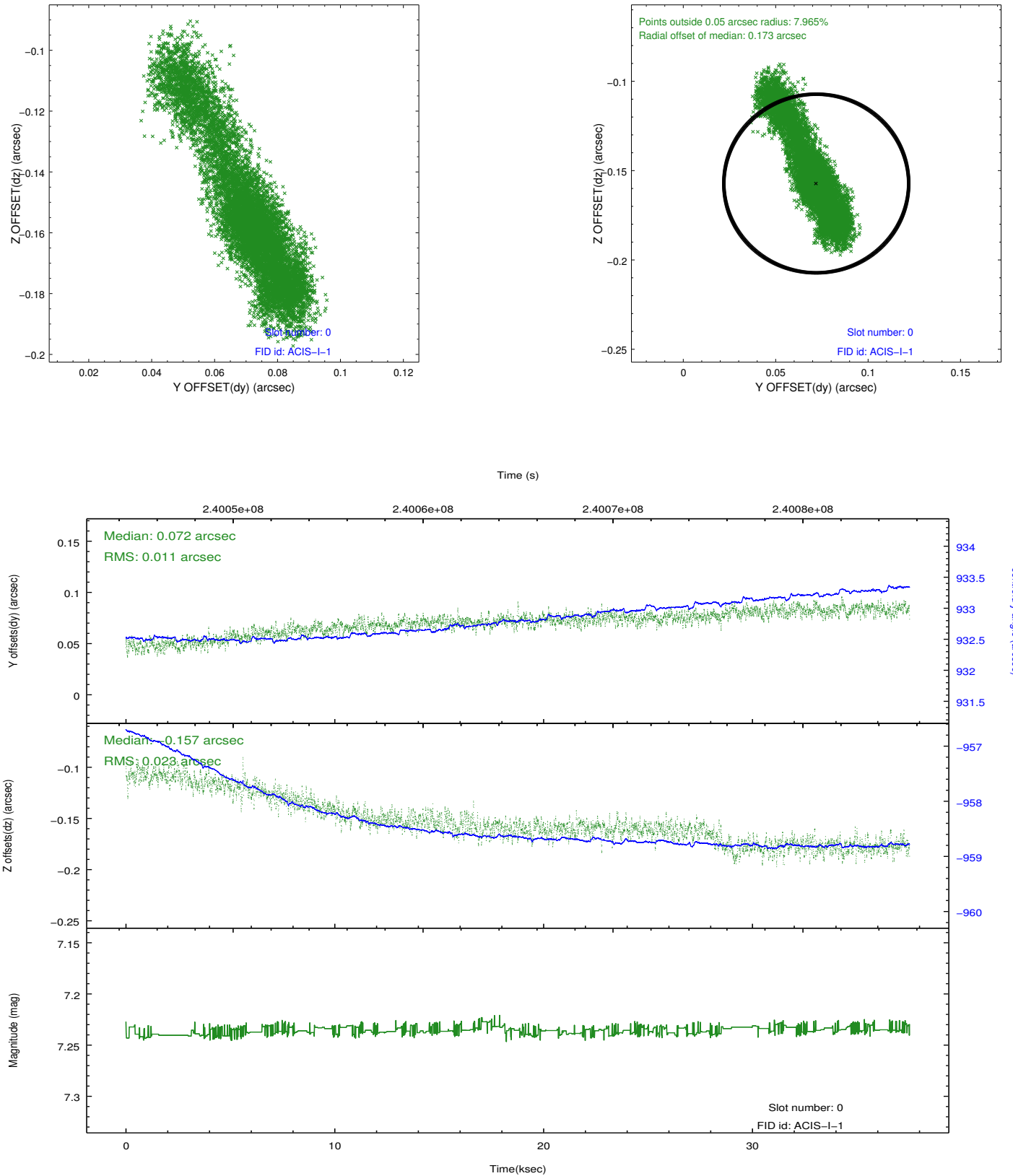


## 2.4.5 Slot 7

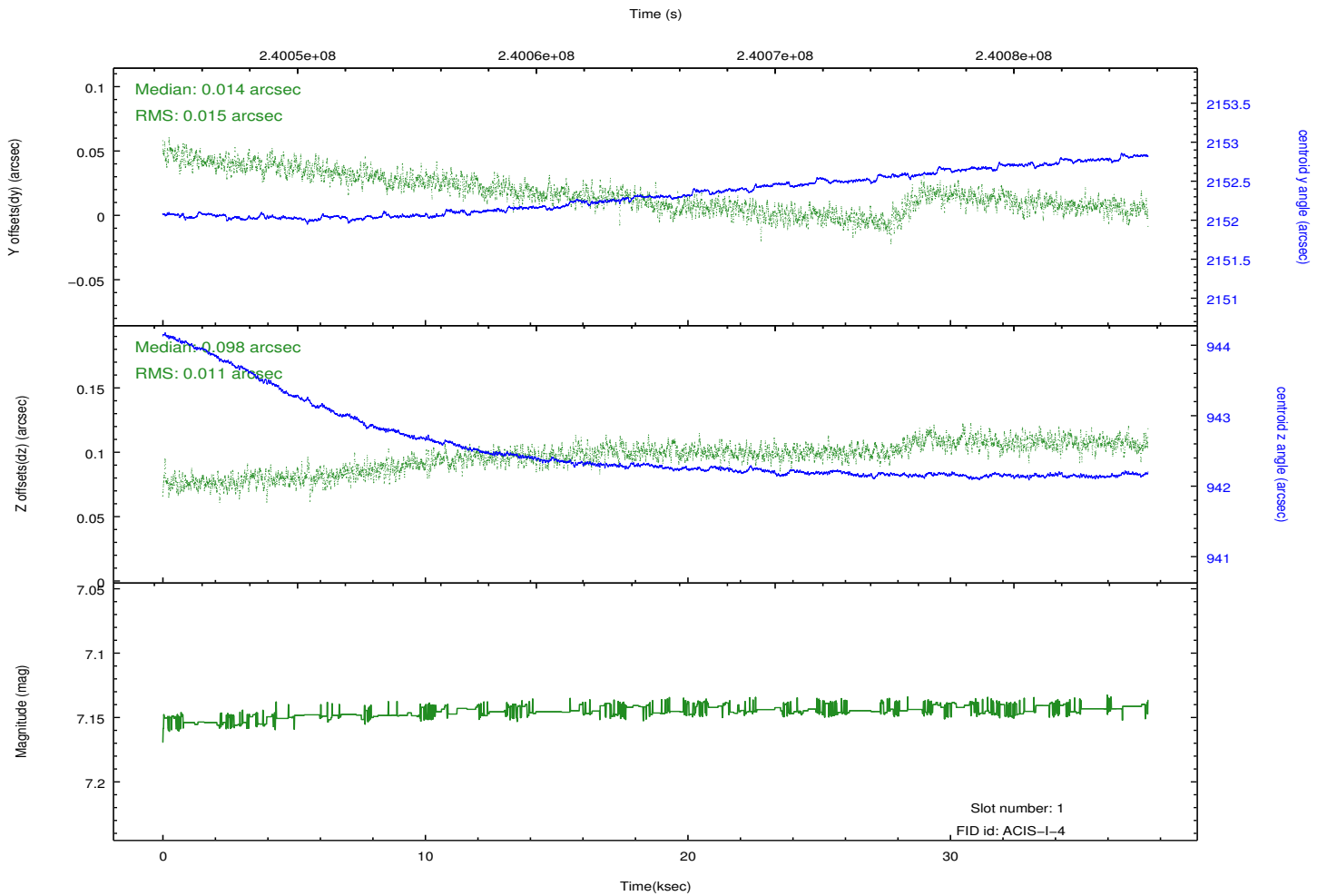
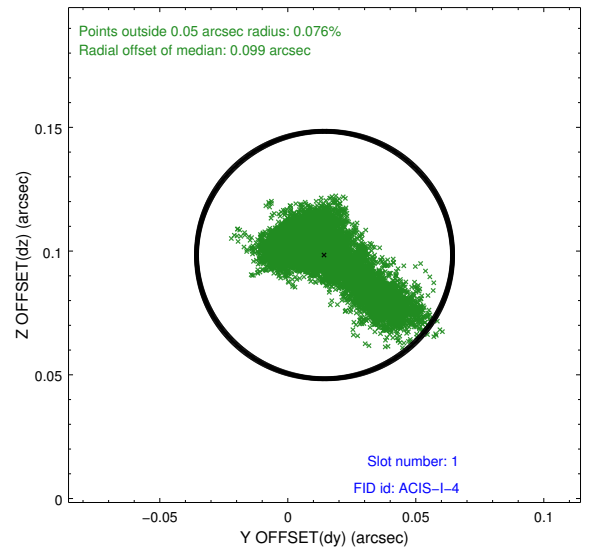
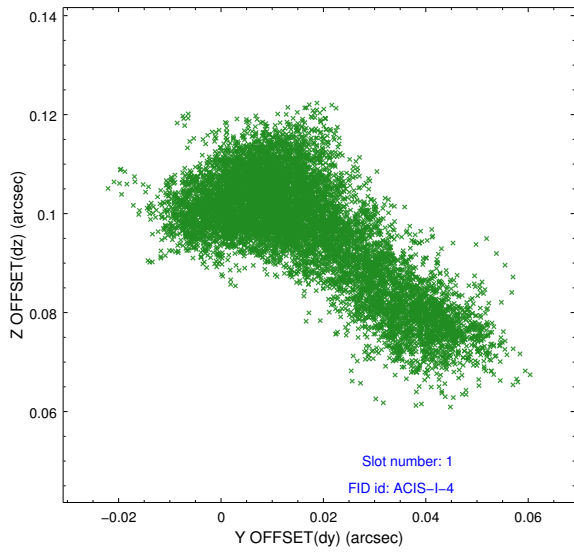


## 2.5 FID Slots

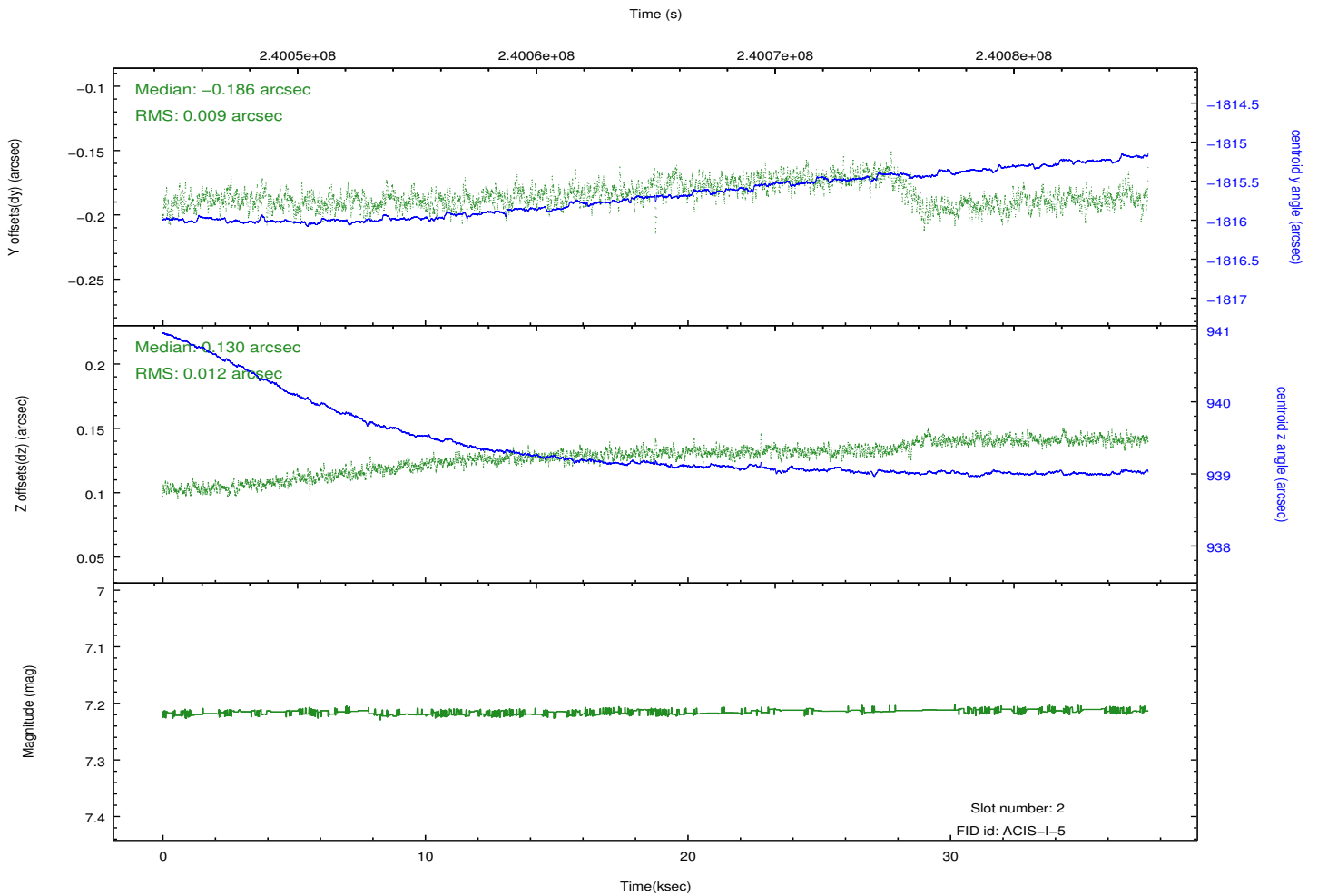
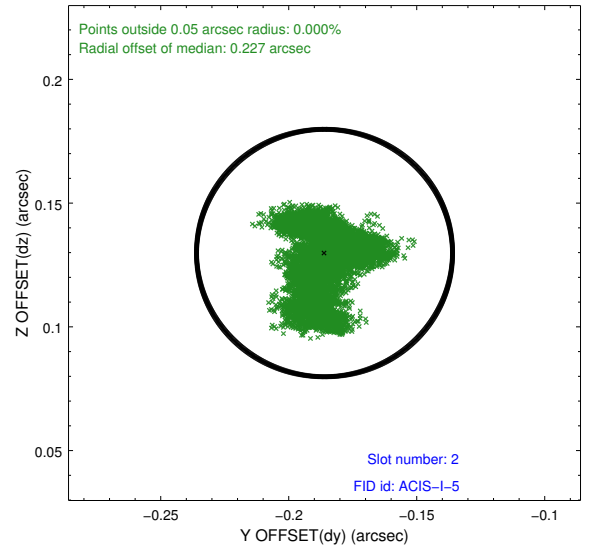
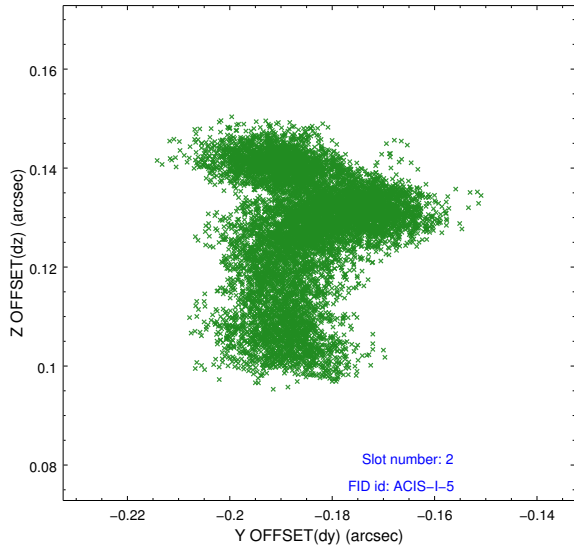
### 2.5.1 Slot 0



## 2.5.2 Slot 1



### 2.5.3 Slot 2



# A Summary

## A.1 Status

V&V Scientist	Jen Lauer
V&V Date (YYYY-MM-DD)	2013.01.24
V&V Edition	1
V&V Disposition and Status	OK
V&V Charge Time	37.0449

## A.2 Comments