

V&V Reference Report

L2 ASCDS Version : 8.4.3

Observation 6656 - L2 Version 4
Chandra X-Ray Center

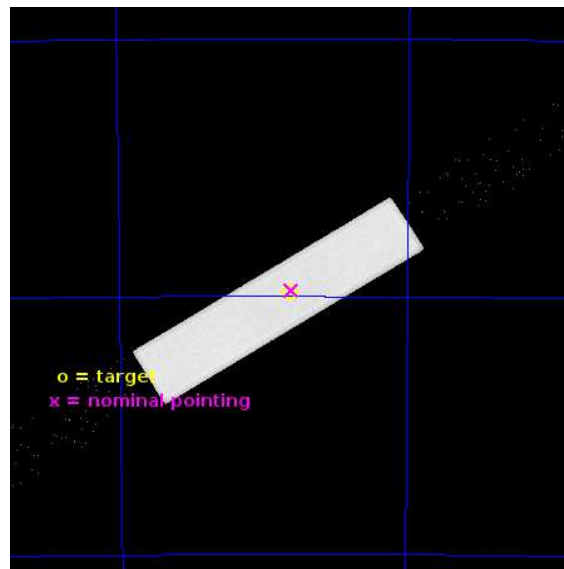
L2 Processing Date : Jun 29 2013

Contents

1	Front	2
2	OBI	3
2.1	OBI	3
2.1.1	Images	3
2.1.2	Parameters	4
2.1.3	Events	4
2.2	Compared Parameters	5
2.3	Aspect	6
2.4	Star Slots	9
2.4.1	Slot 3	9
2.4.2	Slot 4	10
2.4.3	Slot 5	11
2.4.4	Slot 6	12
2.4.5	Slot 7	13
2.5	FID Slots	14
2.5.1	Slot 0	14
2.5.2	Slot 1	15
2.5.3	Slot 2	16
A	Summary	17
A.1	Status	17
A.2	Comments	17

1 Front

seq_num	500610	Sequence number
obs_id	6656	Observation id
title	Precision X-ray timing and imaging of the young and energetic pulsar PSR J1357-6429	Proposal title
observer	Prof Mariano Mendez	Principal investigator
object	PSR J1357-6429	Source name
ra_targ	209.26	Observer's specified target RA [deg]
dec_targ	-64.491722	Observer's specified target Dec [deg]
ra_nom	209.25114023293	Nominal RA [deg]
dec_nom	-64.489120349442	Nominal Dec [deg]
roll_nom	148.05934681739	Nominal Roll [deg]
revision	4	Processing version of data
ontime	17141.075791597	[s]
livetime	17066.040924196	Ontime multiplied by DTCOR
l2events	750128	Number of level 2 events

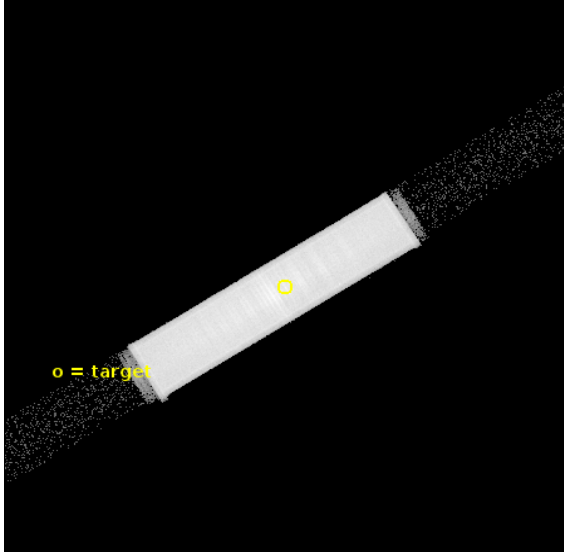


2 OBI

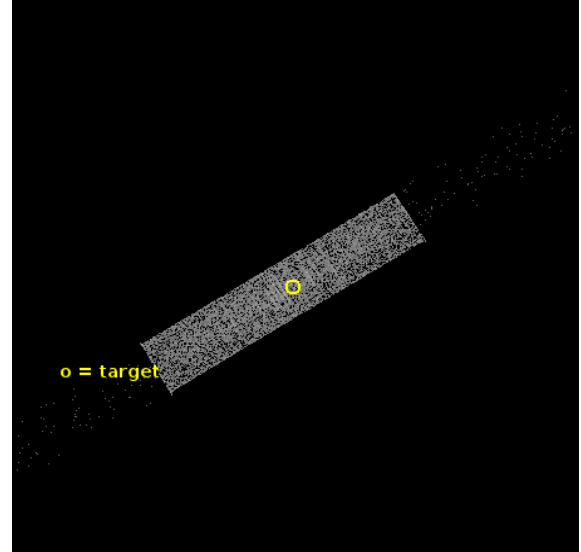
2.1 OBI

2.1.1 Images

Level 1 Image



Level 1 Bad Events



2.1.2 Parameters

obi_num	0	Obi number	sched_exp_time	17000.000000	[s] Scheduled observation exposure time
ascdsver	10	Processing system revision	ontime	17141.075791597	[s]
caldsver	4.5.7	 	l1events	1137744	Number of level 1 events
date	2013-06-29T08:02:25	Date and time of file creation			
revision	4	Processing version of data			

2.1.3 Events

Level 1 Events

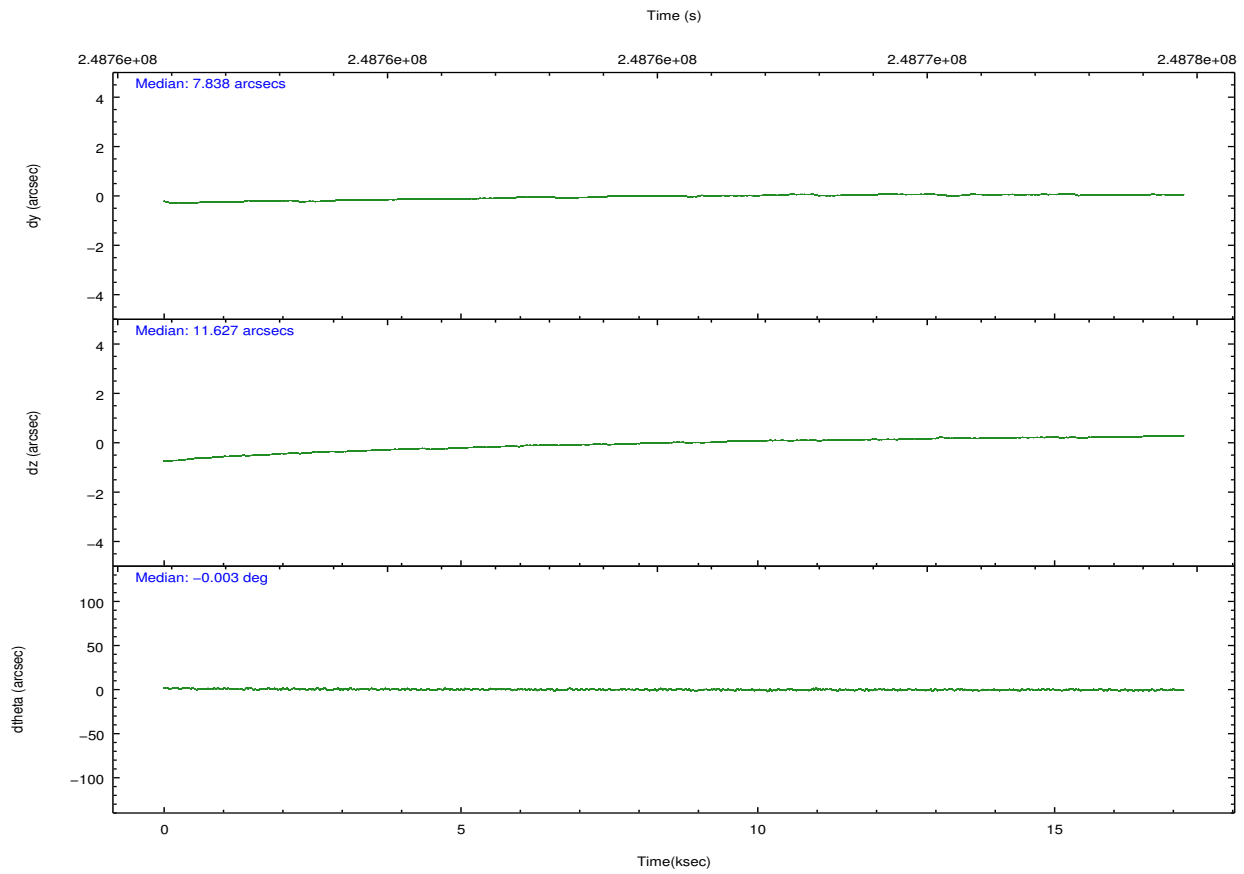
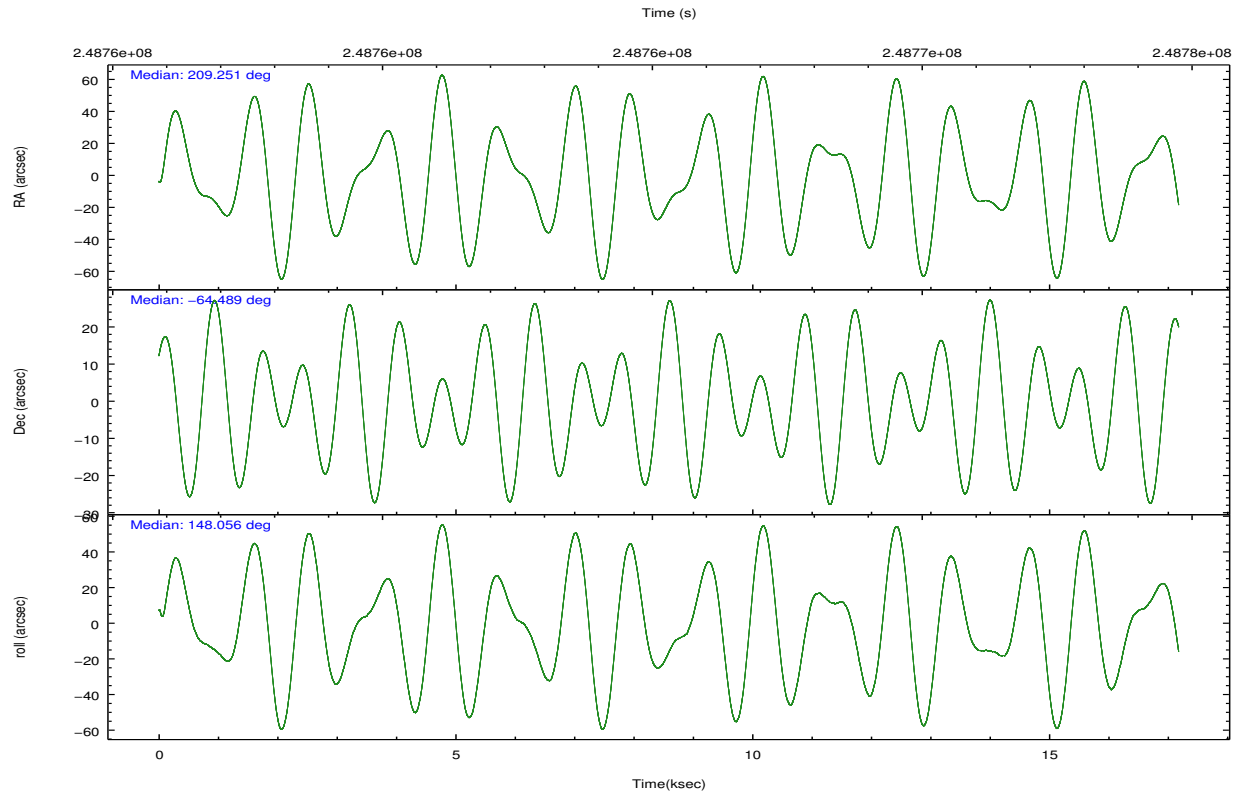
	segment 1	segment 2	segment 3
level 1 events	3029	1133126	1589
rejected events	1623	72389	1496
rejected %	53%	6%	94%

2.2 Compared Parameters

Parameter	Planned	Actual
Instrument	HRC	HRC
Detector	HRC-S	HRC-S
Grating	NONE	NONE
Data mode	OBSERVING	OBSERVING
Observation mode	POINTING	POINTING
[deg] Pointing RA	209.317345	209.2511402329259
[deg] Pointing Dec	-64.488658	-64.48912034944181
[deg] Pointing Roll	148.051752	148.0593468173912
[mm] SIM focus pos	-1.529586	-1.523540733526241
[mm] SIM defocus	0.003750771043328743	0.009795905878055677
[mm] SIM translation stage pos	250.455976	250.466033080201
[mm] SIM translation stage offset	0	-0.01005468664627074
[s] Observation start time (MET)	248756894.184000	248756063.13211
Observation start date	2005-11-19T03:07:10	2005-11-19T02:54:23
[s] Observation end time (MET)	248773894.184000	248774444.45796
Observation end date	2005-11-19T07:50:30	2005-11-19T08:00:44

Parameter	Planned	Actual
Obspar format version number	7	7
Obspar file type	PREDICTED	ACTUAL
Obspar update status	NONE	UPDATED

2.3 Aspect

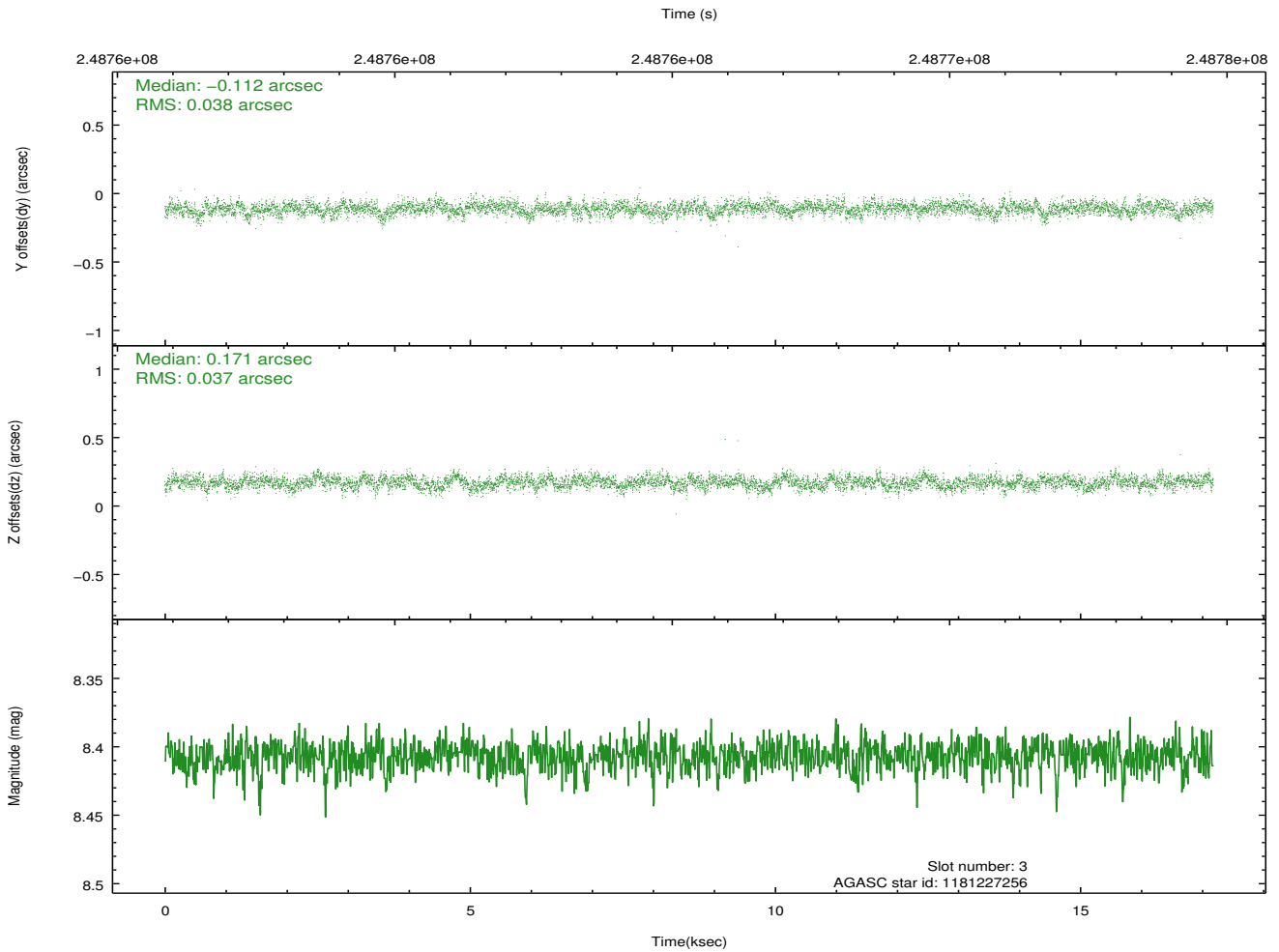
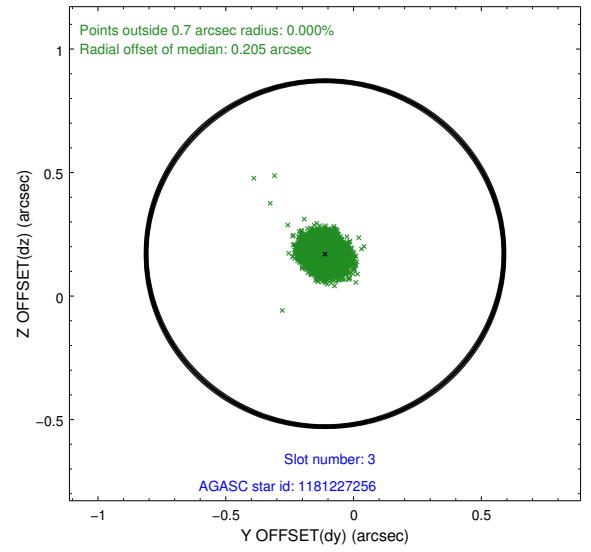
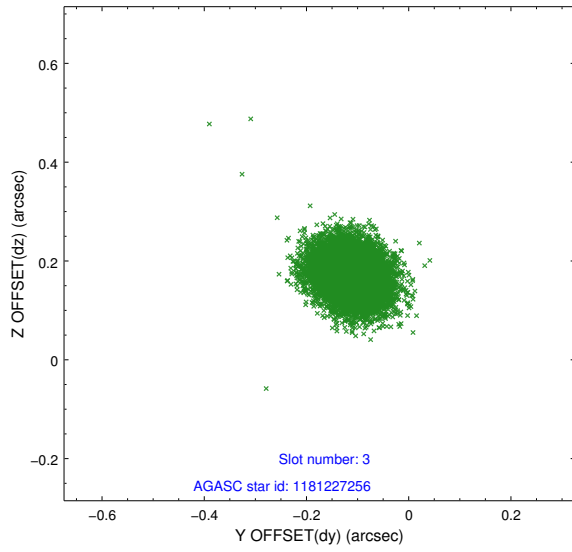


Slot Statistics

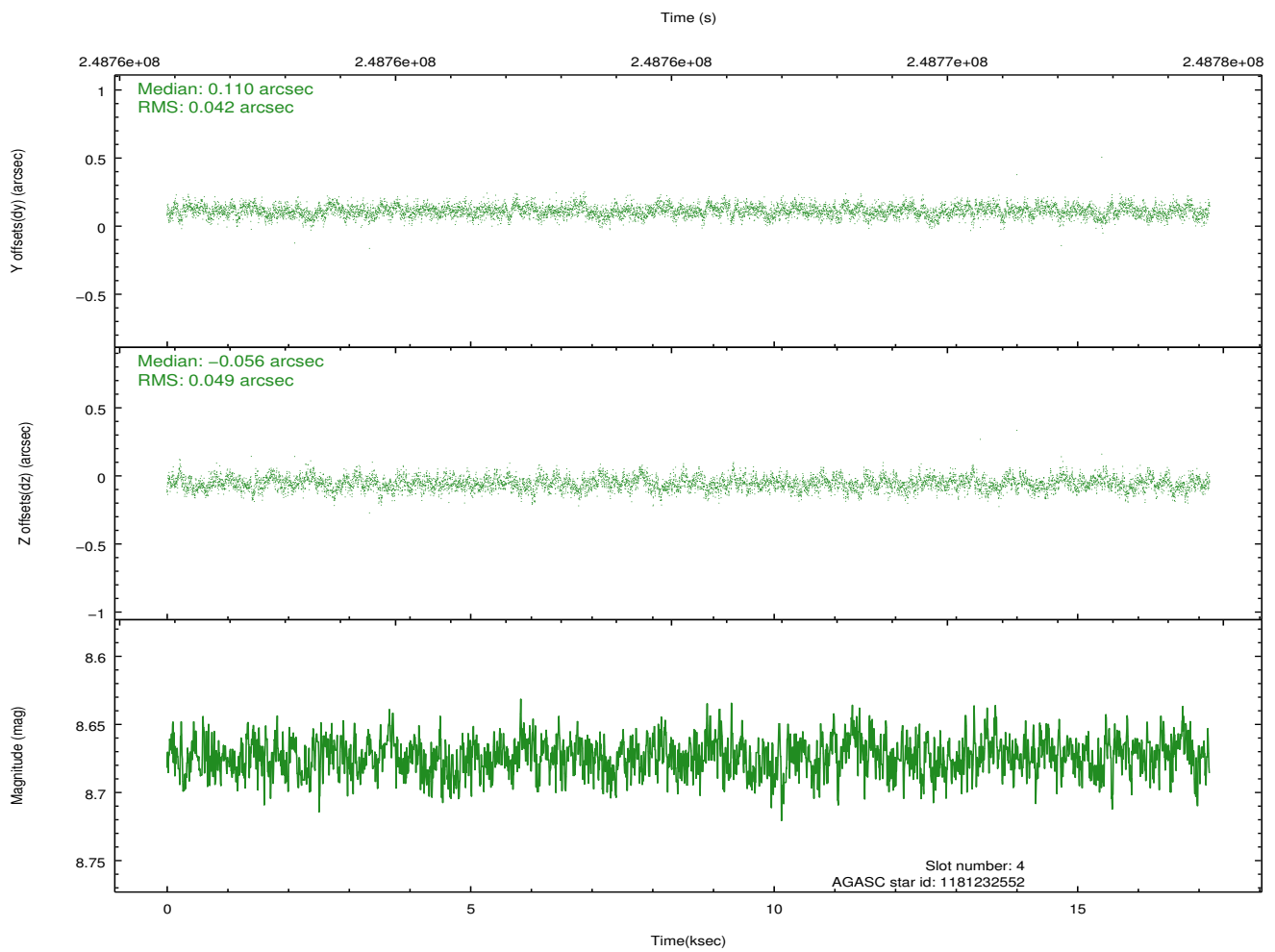
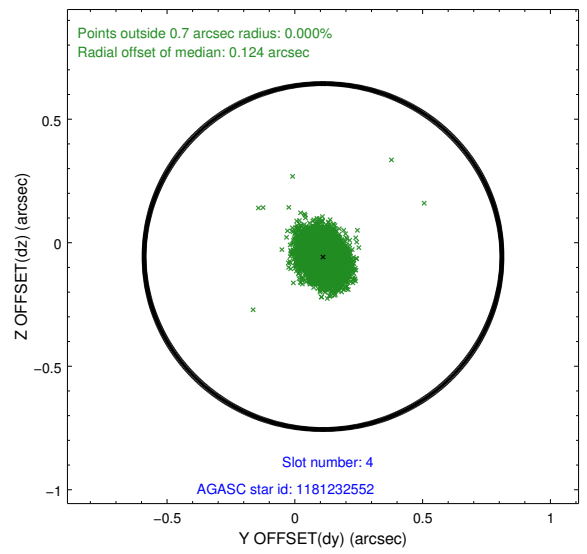
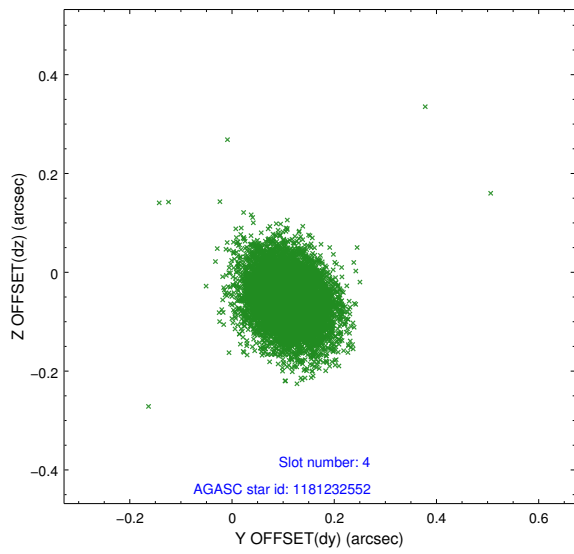
slot	status	id	mag	n_pts	med_dy	med_dz	dr1	dr2	ra	dec	mean_y	mean_z
0	FID	HRC-S-1	7.05	4189	0.139	-0.148	0.014	0.032	0.000000	0.000000	-1161.93	-460.27
1	FID	HRC-S-2	7.05	4190	0.171	-0.122	0.008	0.014	0.000000	0.000000	1237.48	-453.00
2	FID	HRC-S-3	7.06	4190	0.079	-0.033	0.017	0.036	0.000000	0.000000	-1164.42	569.26
3	GUIDE	1181227256	8.41	8380	-0.112	0.171	0.056	0.091	208.179405	-64.135660	2180.71	-118.54
4	GUIDE	1181232552	8.67	8378	0.110	-0.056	0.068	0.112	208.565497	-64.494630	974.73	641.07
5	GUIDE	1181238104	8.91	8379	0.002	-0.064	0.090	0.140	208.215848	-64.823325	786.59	1927.68
6	GUIDE	1181231456	8.25	8375	-0.020	-0.161	0.074	0.117	208.536615	-64.944484	138.24	2028.82
7	GUIDE	1181359360	8.29	8378	0.022	0.109	0.069	0.107	211.217976	-64.384352	-2333.79	-1845.75

2.4 Star Slots

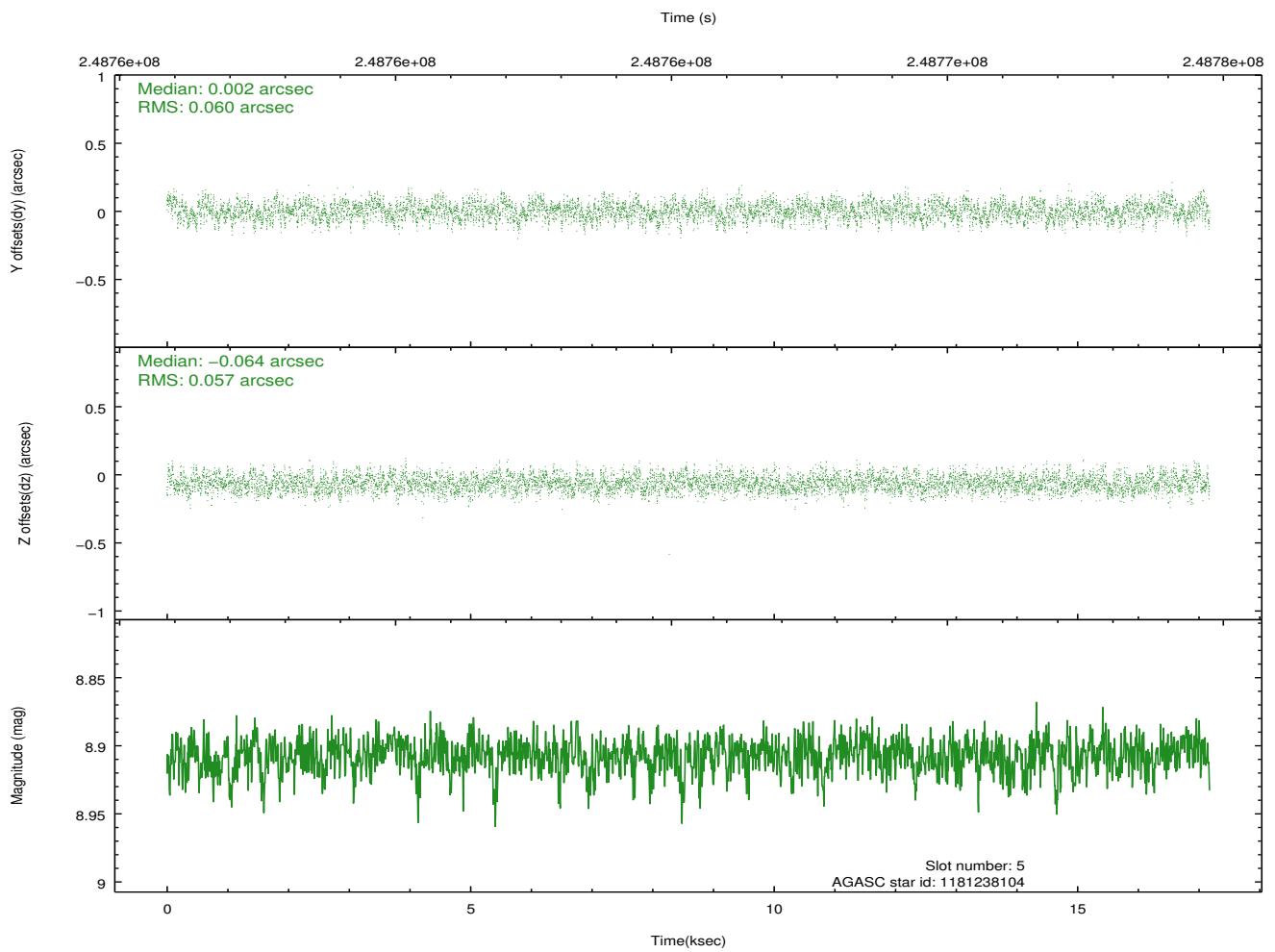
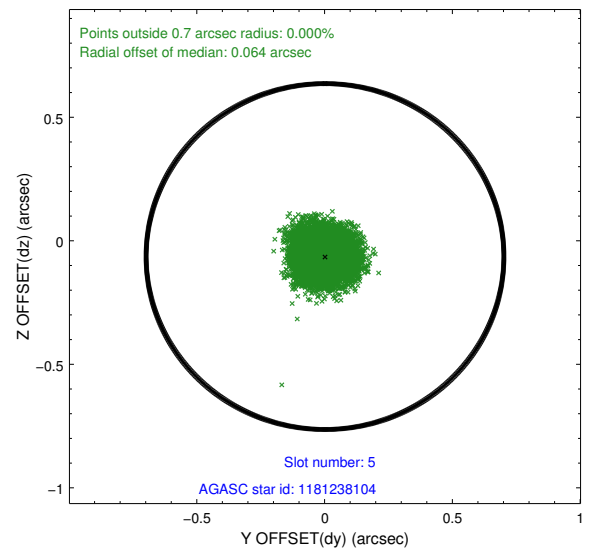
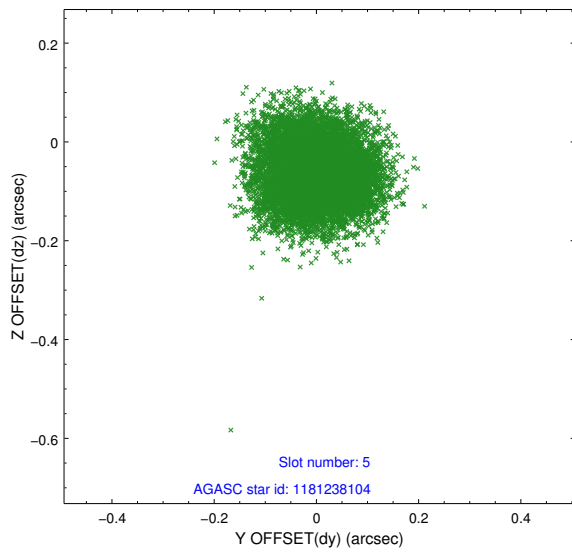
2.4.1 Slot 3



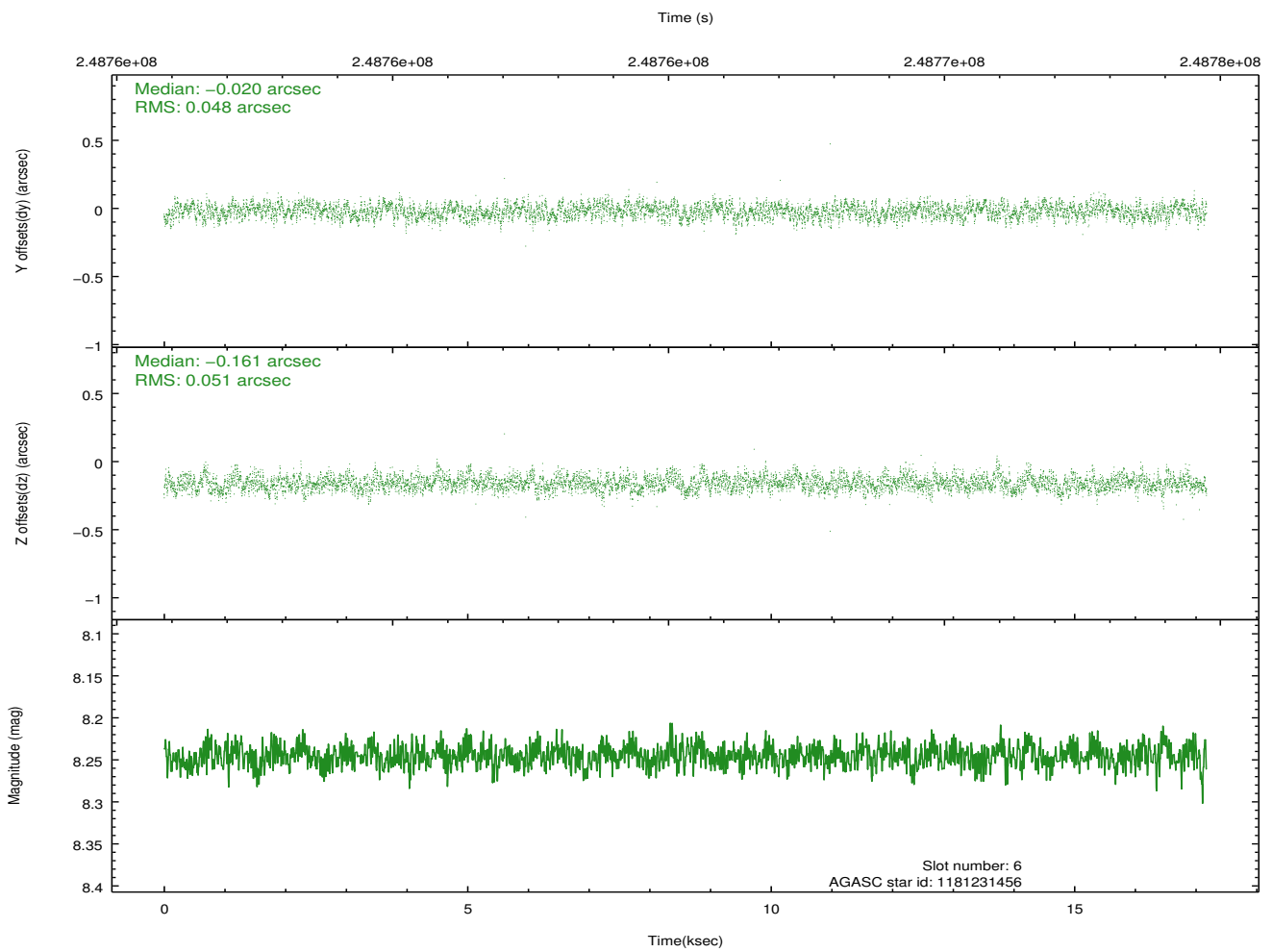
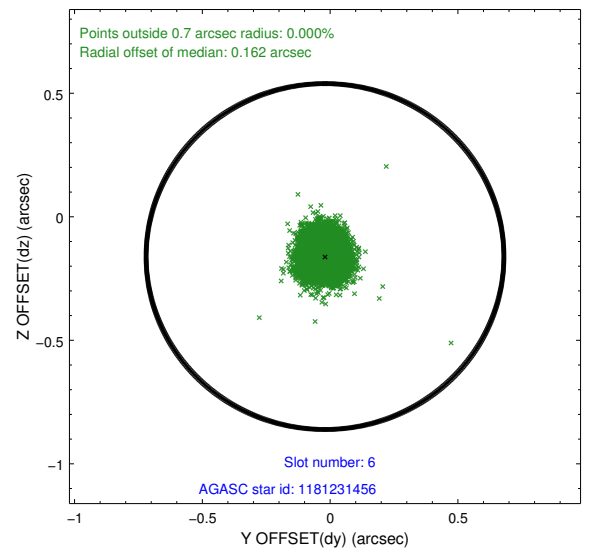
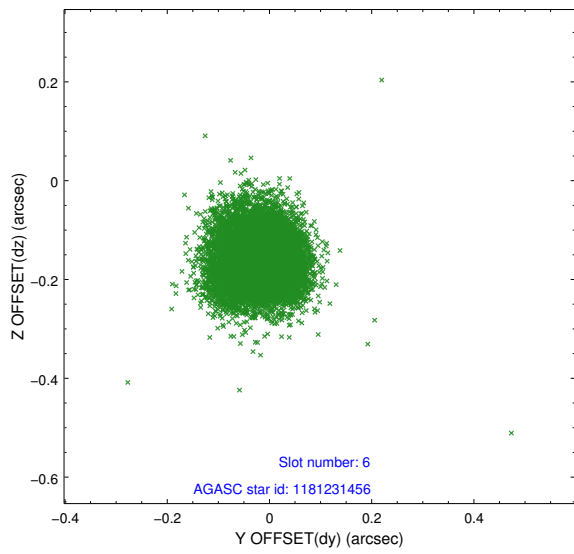
2.4.2 Slot 4



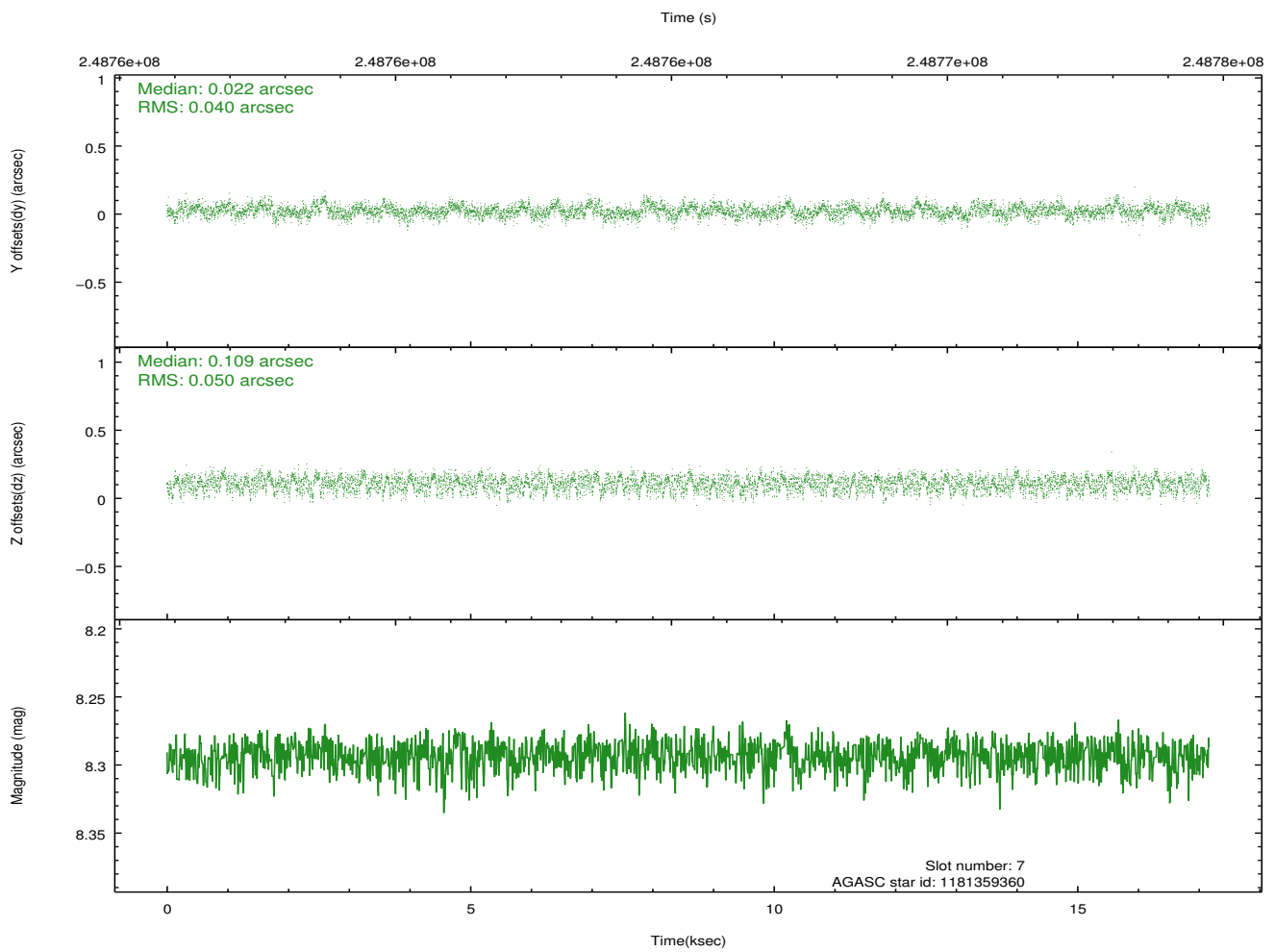
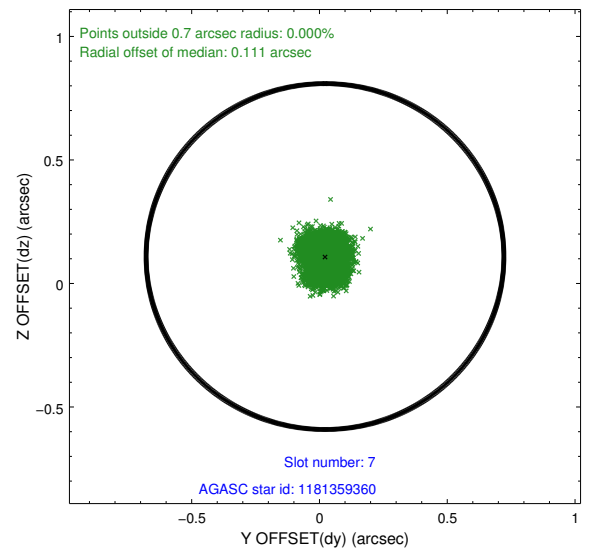
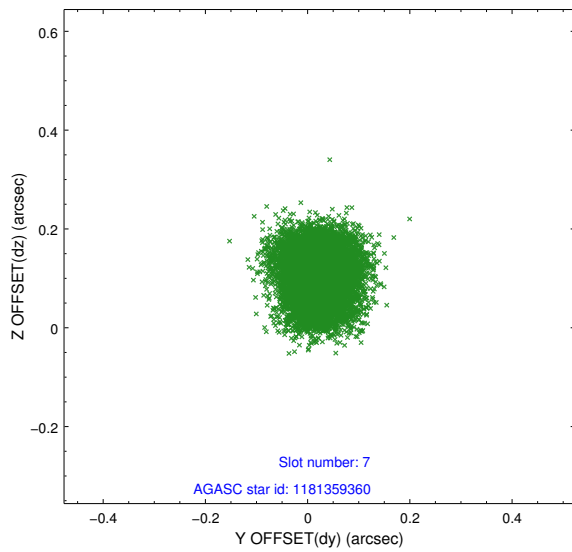
2.4.3 Slot 5



2.4.4 Slot 6

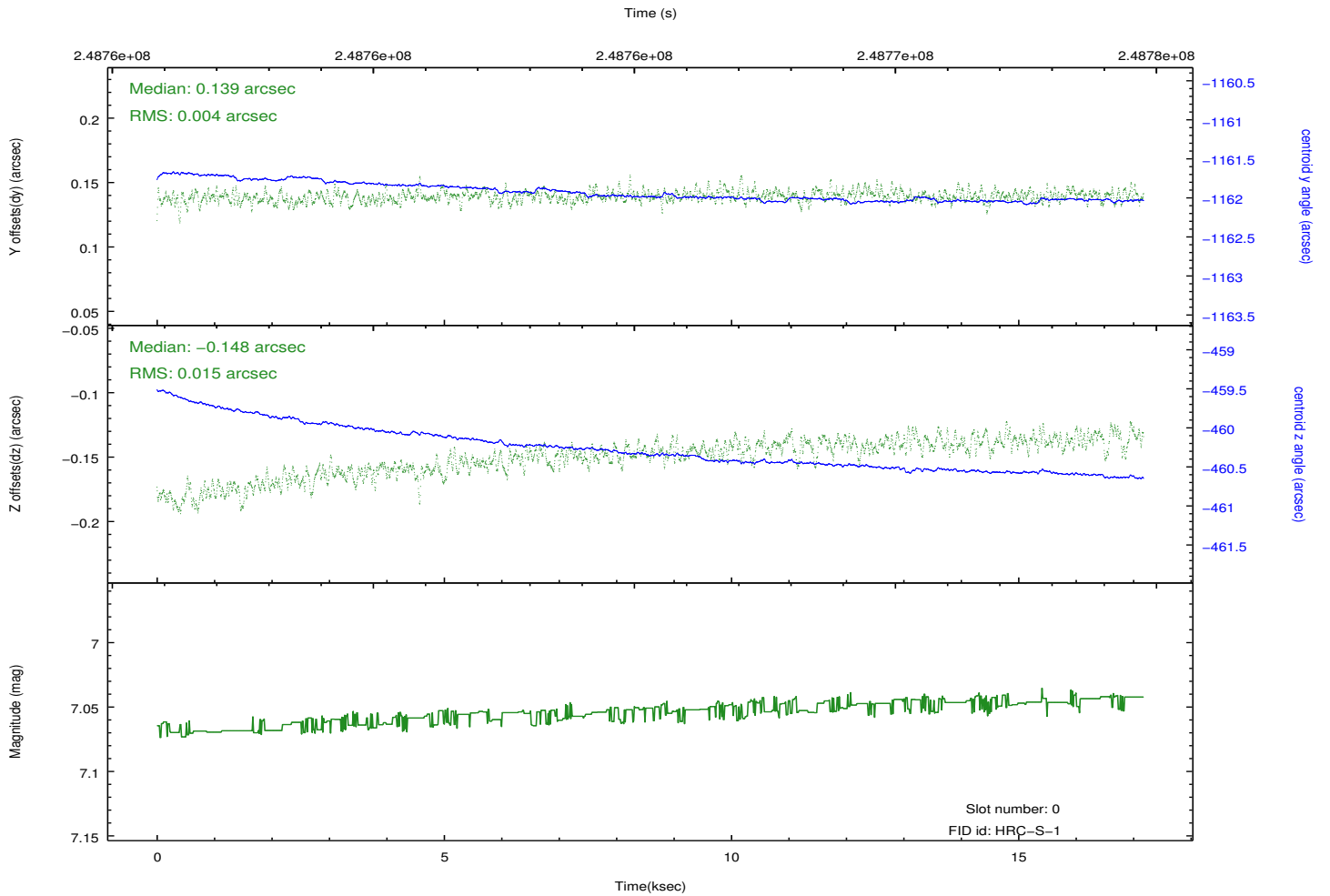
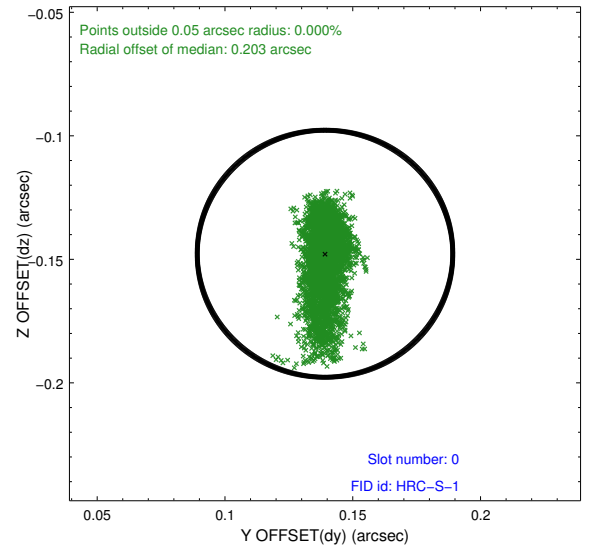
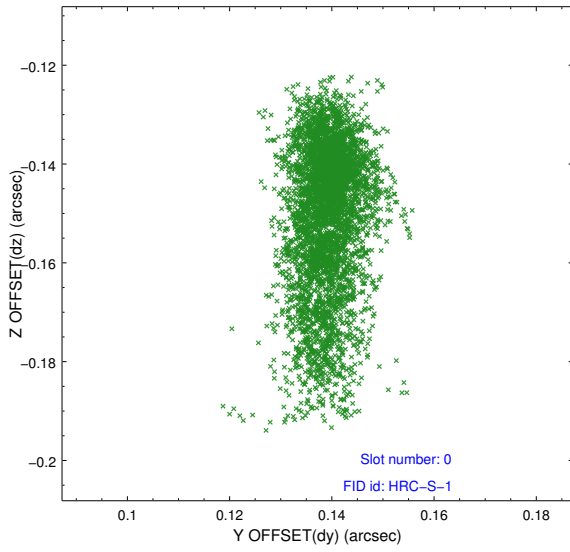


2.4.5 Slot 7

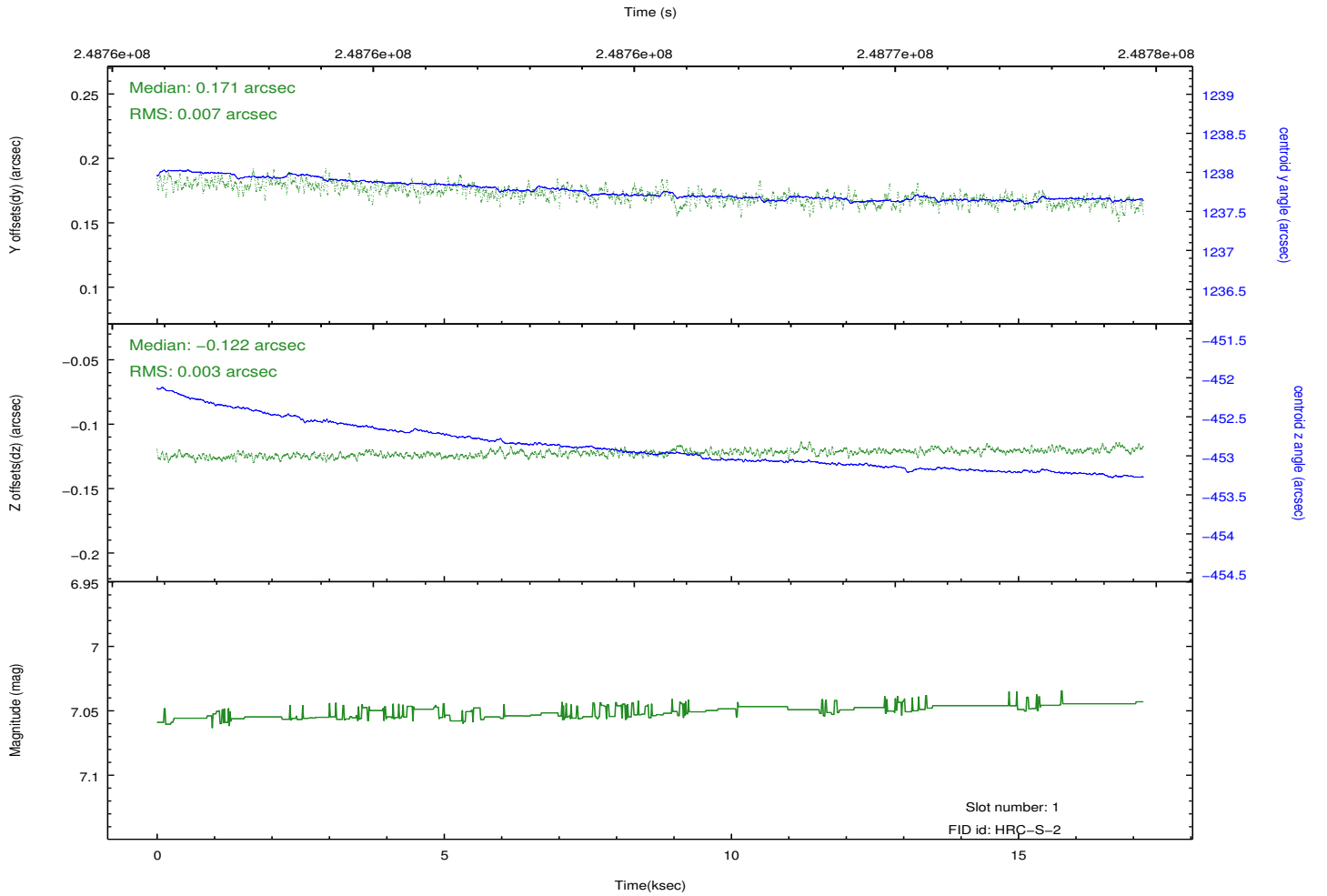
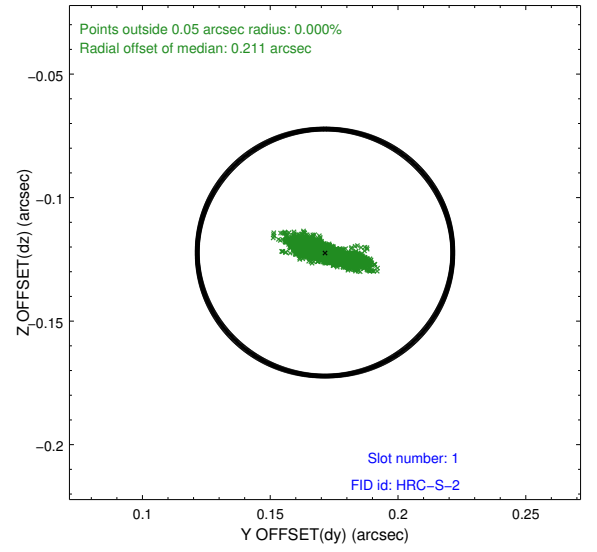
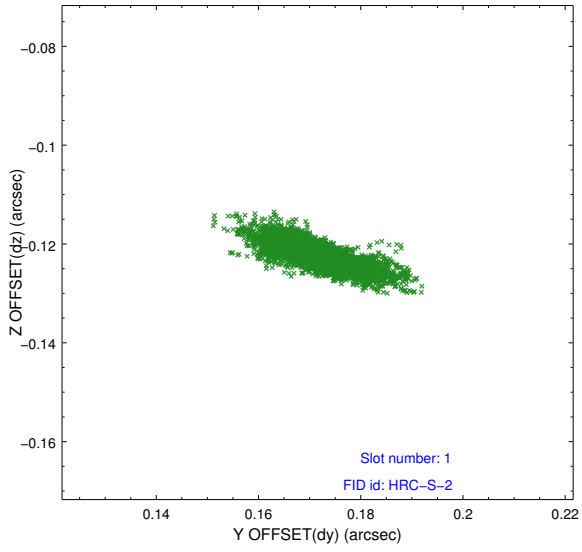


2.5 FID Slots

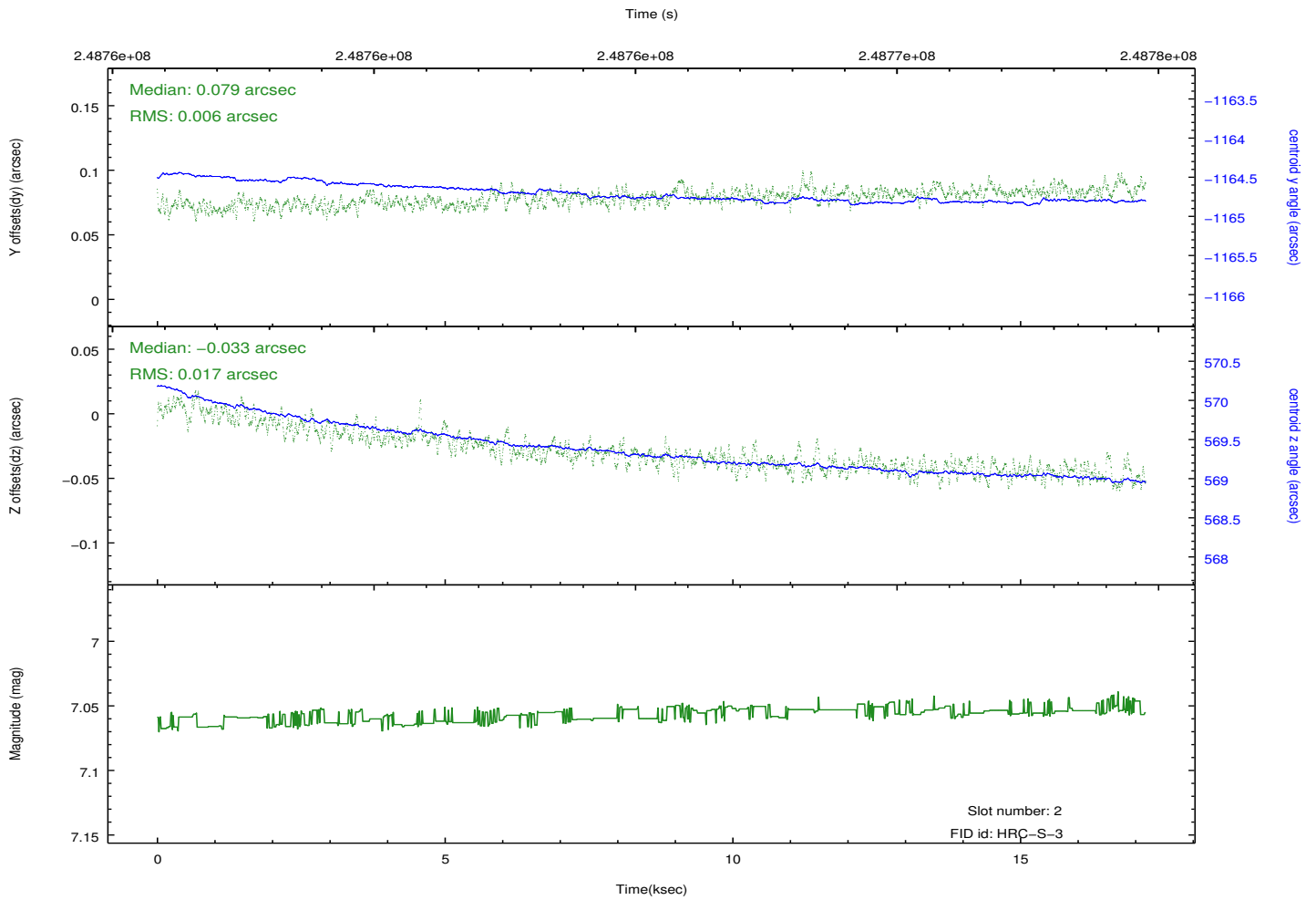
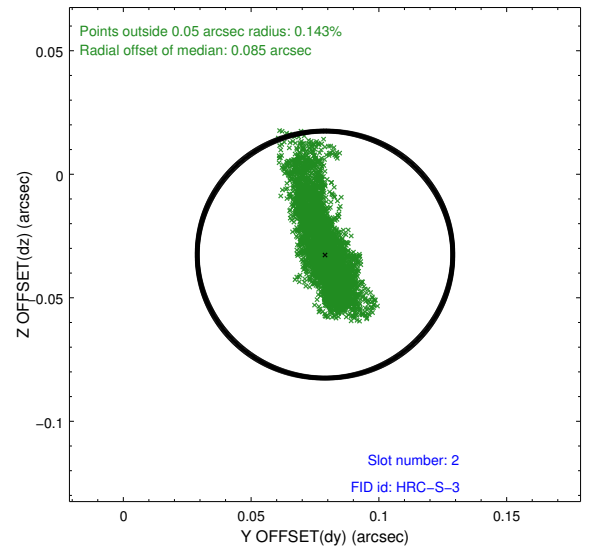
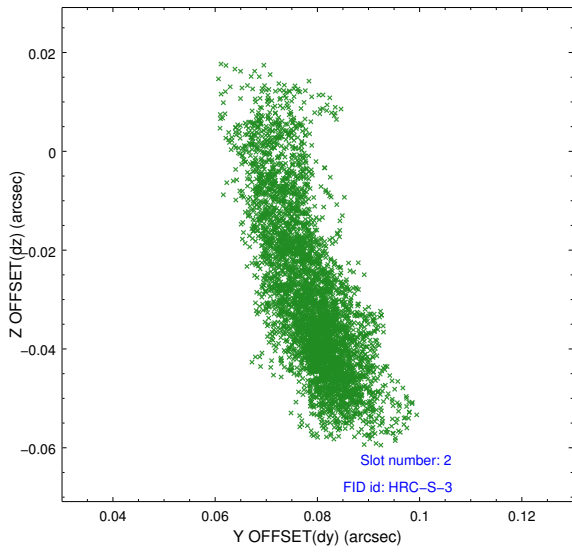
2.5.1 Slot 0



2.5.2 Slot 1



2.5.3 Slot 2



A Summary

A.1 Status

V&V Scientist	Beth Sundheim
V&V Date (YYYY-MM-DD)	2013.07.02
V&V Edition	1
V&V Disposition and Status	OK
V&V Charge Time	17.14107

A.2 Comments