

# V&V Reference Report

## L2 ASCDS Version : 8.4.3.1

Observation 6706 - L2 Version 2  
Chandra X-Ray Center

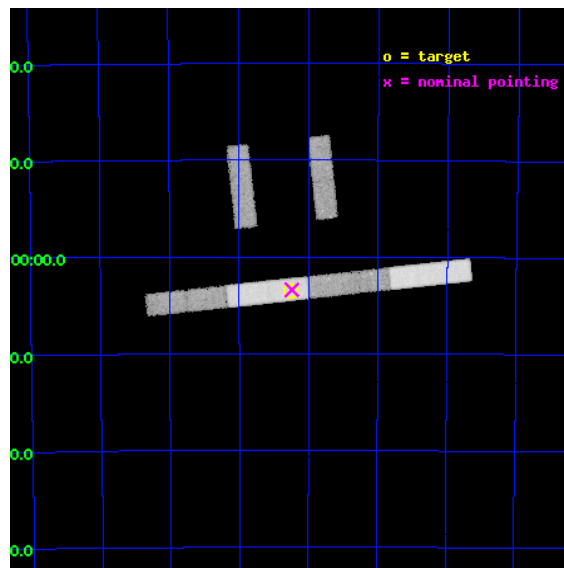
L2 Processing Date : Apr 9 2012

## Contents

<b>1</b>	<b>Front</b>	<b>2</b>
<b>2</b>	<b>OBI</b>	<b>3</b>
2.1	OBI . . . . .	3
2.1.1	Images . . . . .	3
2.1.2	Bias . . . . .	3
2.1.3	Parameters . . . . .	4
2.1.4	Events . . . . .	4
2.2	Compared Parameters . . . . .	5
2.3	Aspect . . . . .	6
2.4	Star Slots . . . . .	9
2.4.1	Slot 3 . . . . .	9
2.4.2	Slot 4 . . . . .	10
2.4.3	Slot 5 . . . . .	11
2.4.4	Slot 6 . . . . .	12
2.4.5	Slot 7 . . . . .	13
2.5	FID Slots . . . . .	14
2.5.1	Slot 0 . . . . .	14
2.5.2	Slot 1 . . . . .	15
2.5.3	Slot 2 . . . . .	16
<b>A</b>	<b>Summary</b>	<b>17</b>
A.1	Status . . . . .	17
A.2	Comments . . . . .	17

# 1 Front

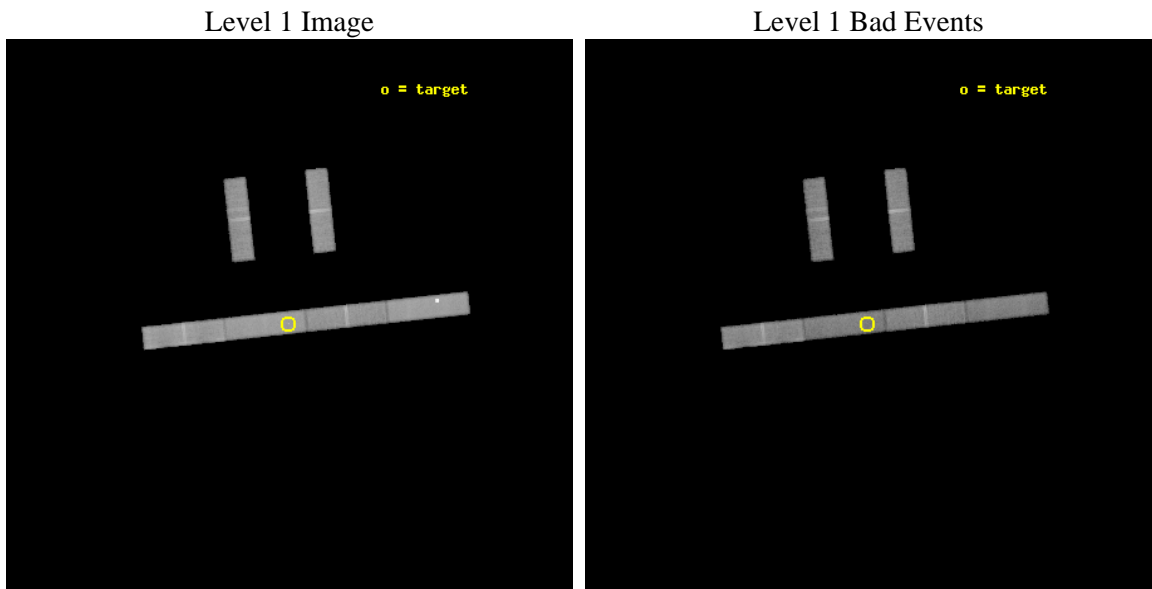
seq_num	500657	Sequence number
obs_id	6706	Observation id
title	Pulsar Wind Nebula Generation: A Spin-down Power Threshold?	Propos
observer	Dr. Eric Gotthelf	Principal investigator
object	PSR J1112-6103	Source name
dtcycle	0	&#160
cycle	P	events from which exps? Prim/Second/Both
ra_targ	168.061667	Observer's specified target RA [deg]
dec_targ	-61.058639	Observer's specified target Dec [deg]
ra_nom	168.05946426962	Nominal RA [deg]
dec_nom	-61.056839600653	Nominal Dec [deg]
roll_nom	173.81929388501	Nominal Roll [deg]
revision	2	Processing version of data
ontime	34644.500750899	Sum of GTIs [s]
livetime	33398.435485162	Livetime [s]
ontime2	34644.500750899	Sum of GTIs [s]
ontime3	34644.500750899	Sum of GTIs [s]
ontime5	34644.500750899	Sum of GTIs [s]
ontime6	34644.500750899	Sum of GTIs [s]
ontime7	34644.500750899	Sum of GTIs [s]
ontime8	34643.35973078	Sum of GTIs [s]
l2events	145549	Number of level 2 events



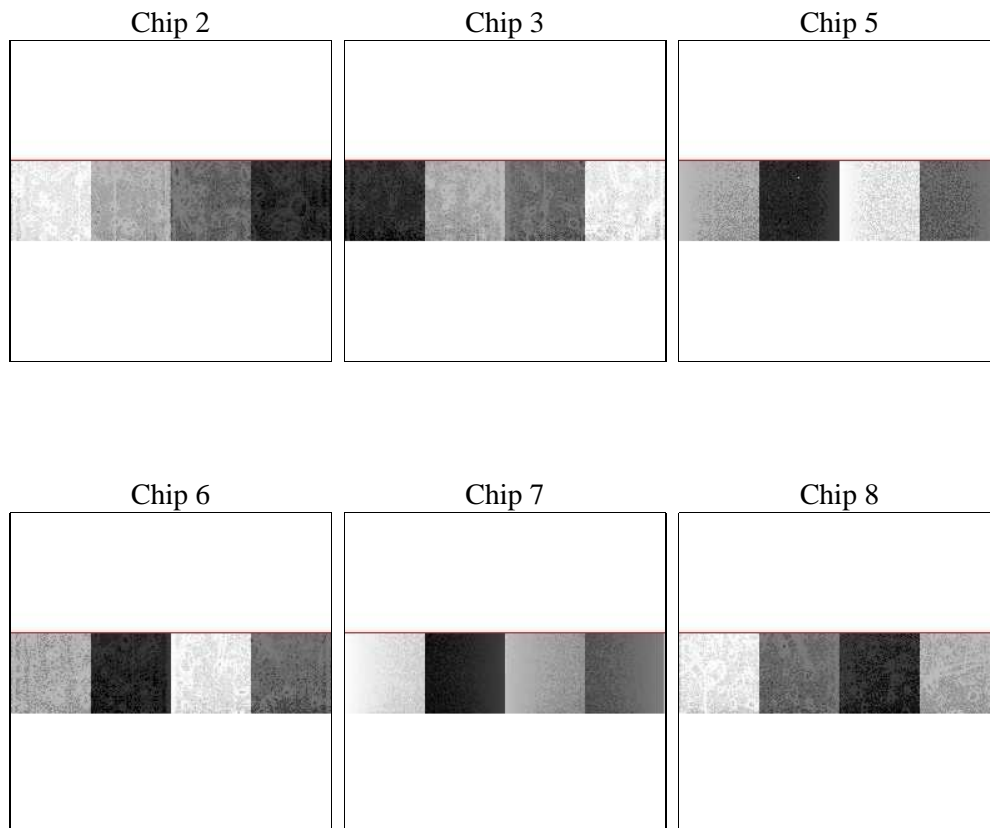
## 2 OBI

### 2.1 OBI

#### 2.1.1 Images



#### 2.1.2 Bias



### 2.1.3 Parameters

obi_num	0	Obi number	sched_exp_time	34500.000000	[s] Scheduled observation exposure time
ascdsver	8.4.3.1	Processing system revision	ontime	34644.500750899	Sum of GTIs [s]
caldsver	4.4.9	&#160	ontime2	34644.500750899	Sum of GTIs [s]
date	2012-04-09T16:36:38	Date and time of file creation	ontime3	34644.500750899	Sum of GTIs [s]
revision	2	Processing version of data	ontime5	34644.500750899	Sum of GTIs [s]
			ontime6	34644.500750899	Sum of GTIs [s]
			ontime7	34644.500750899	Sum of GTIs [s]
			ontime8	34643.35973078	Sum of GTIs [s]
			l1events	678317	Number of level 1 events

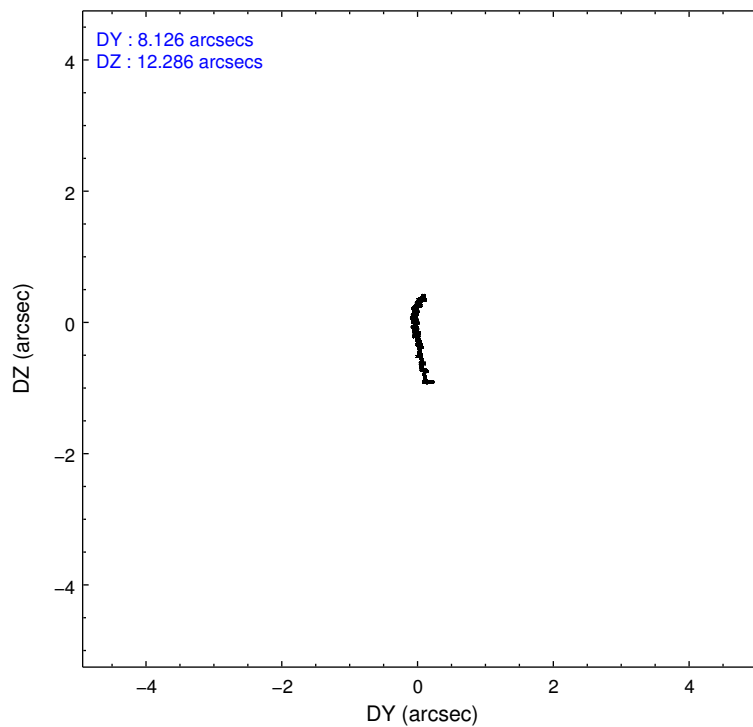
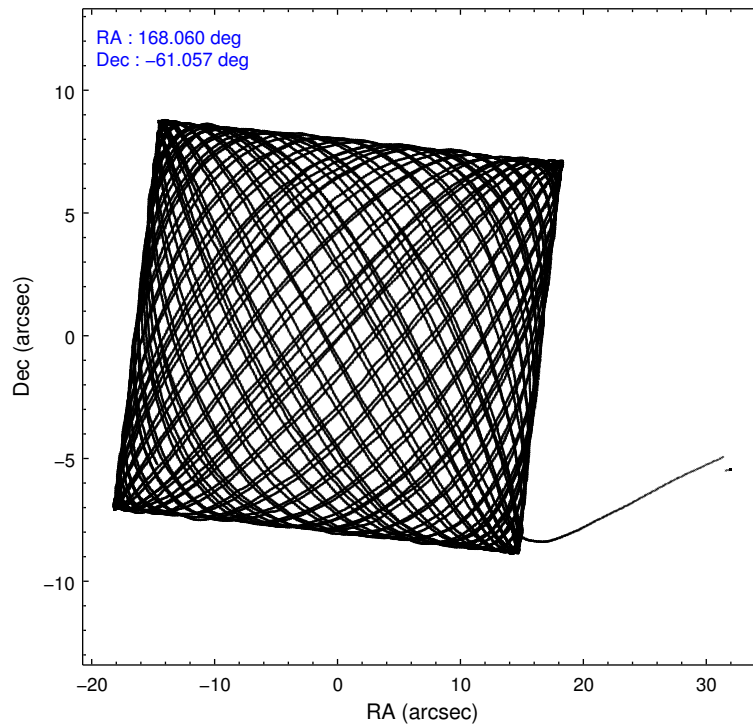
### 2.1.4 Events

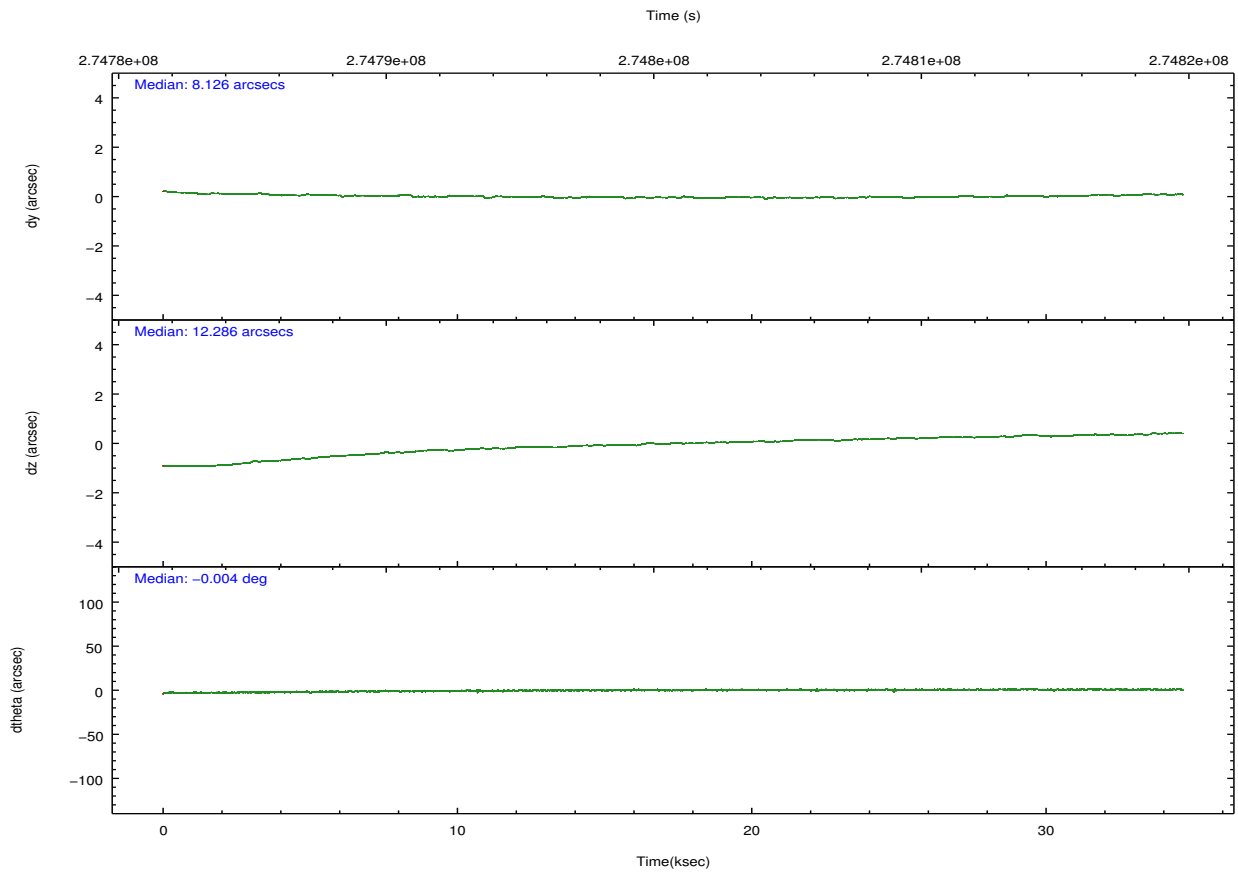
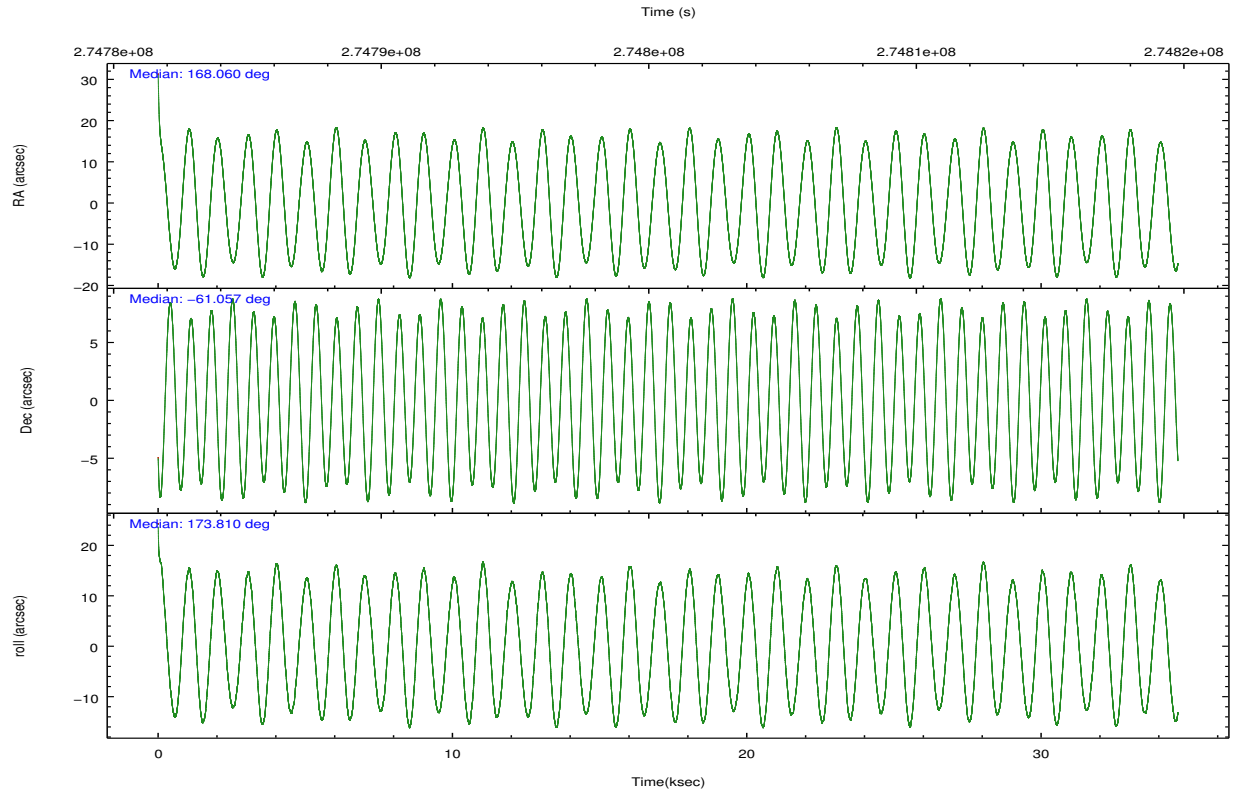
	ccd 2	ccd 3	ccd 5	ccd 6	ccd 7	ccd 8		ccd 2	ccd 3	ccd 5	ccd 6	ccd 7	ccd 8
level 1 events	102196	89613	148374	95578	118497	124059	grade 0 events	5139	4602	26888	5179	5581	7467
rejected events	90254	78720	69237	83312	66657	99075		5%	5%	18%	5%	4%	6%
rejected %	88%	87%	46%	87%	56%	79%	grade 1 events	33	43	225	36	151	61
								0%	0%	0%	0%	0%	0%
							grade 2 events	2288	1913	17896	2286	11025	5497
								2%	2%	12%	2%	9%	4%
							grade 3 events	1519	1461	3463	1525	5465	2900
								1%	1%	2%	1%	4%	2%
							grade 4 events	1502	1403	3326	1475	5329	2632
								1%	1%	2%	1%	4%	2%
							grade 5 events	3352	3639	10278	3877	10904	4909
								3%	4%	6%	4%	9%	3%
							grade 6 events	1798	1744	29544	2066	25622	7223
								1%	1%	19%	2%	21%	5%
							grade 7 events	86565	74808	56754	79134	54420	93370
								84%	83%	38%	82%	45%	75%

## 2.2 Compared Parameters

Parameter	Planned	Actual	Parameter	Planned	Actual
Instrument	ACIS	ACIS	Obspar format version number	7	7
Detector	ACIS-235678	ACIS-235678	Obspar file type	PREDICTED	ACTUAL
Grating	NONE	NONE	Obspar update status	NONE	UPDATED
Data mode	VFAINT	VFAINT	Number of optional ACIS chips dropped	0	0
Observation mode	POINTING	POINTING	On-chip summing requested	N	N
[deg] Pointing RA	168.110626	168.0594642696233	Subarray requested	CUSTOM	1/4
[deg] Pointing Dec	-61.045500	-61.05683960065313	Subarray start row	385	385
[deg] Pointing Roll	173.707436	173.8192938850052	Subarray row count	256	256
[mm] SIM focus pos	-0.684267	-0.6828225247311905	Alternating exposures requested	N	N
[mm] SIM defocus	0	0.001444936568705701	[s] Primary exposure time	0.000000	1.1
[mm] SIM translation stage pos	-190.132523	-190.1425803651734			
[mm] SIM translation stage offset	0	0.01005778216563158			
[s] Observation start time (MET)	274783541.184000	274782367.73262			
Observation start date	2006-09-16T08:44:36	2006-09-16T08:26:07			
[s] Observation end time (MET)	274818041.184000	274818858.75934			
Observation end date	2006-09-16T18:19:36	2006-09-16T18:34:18			
Read mode	TIMED	TIMED			

## 2.3 Aspect



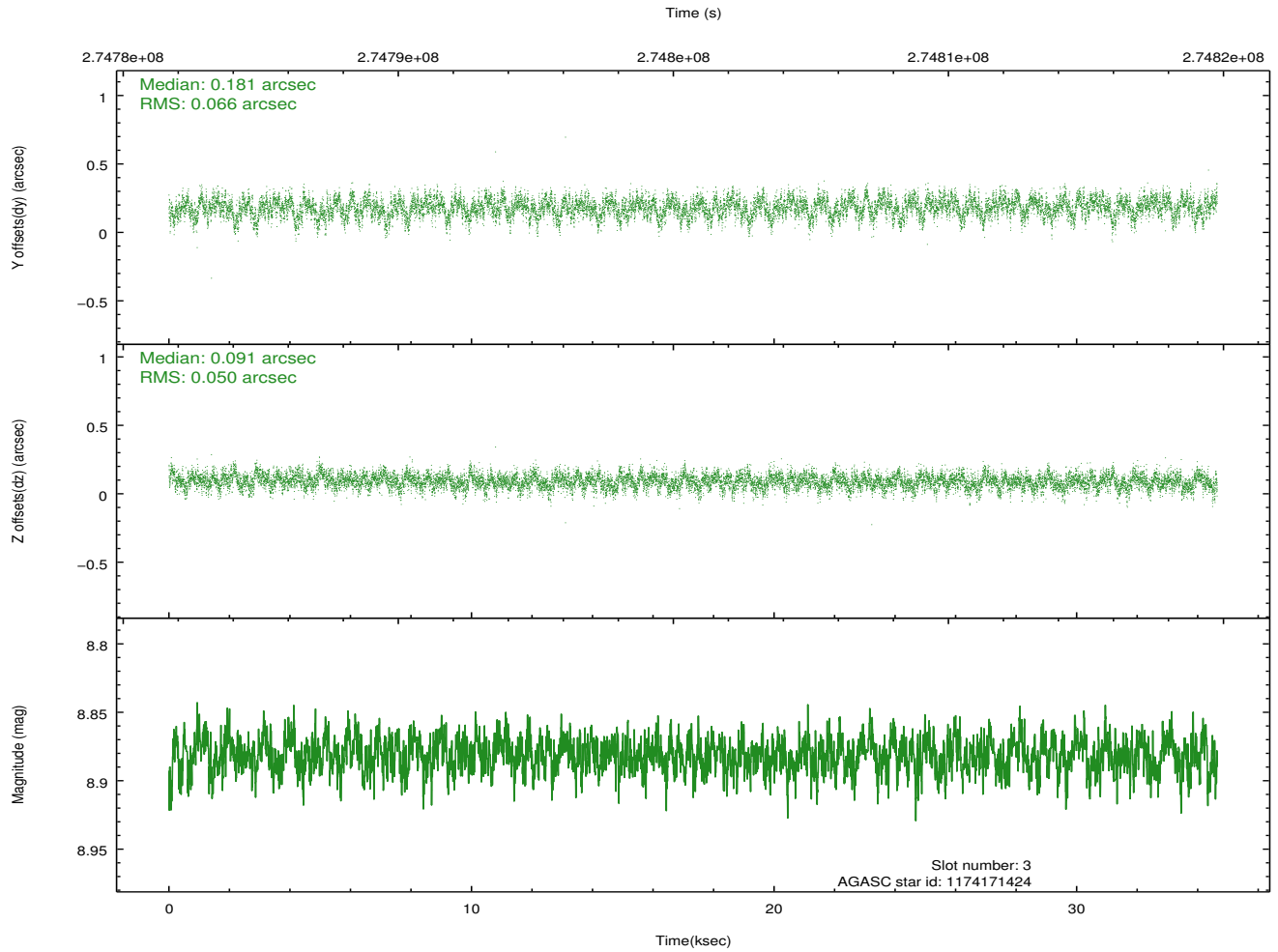
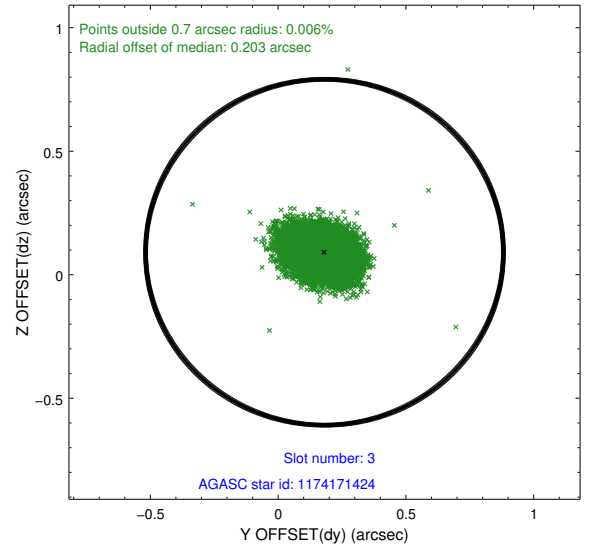
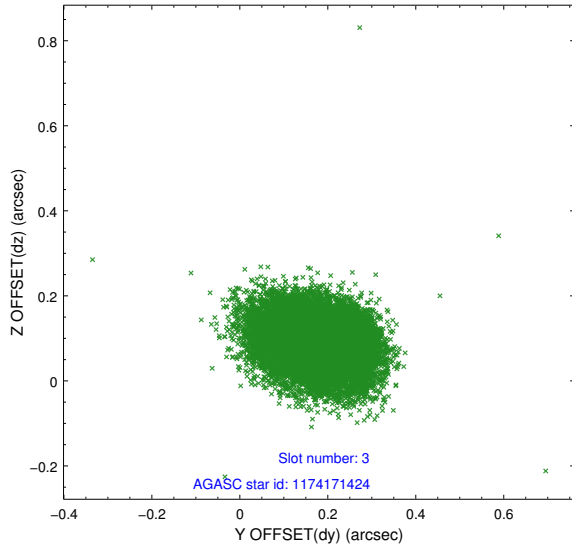


### Slot Statistics

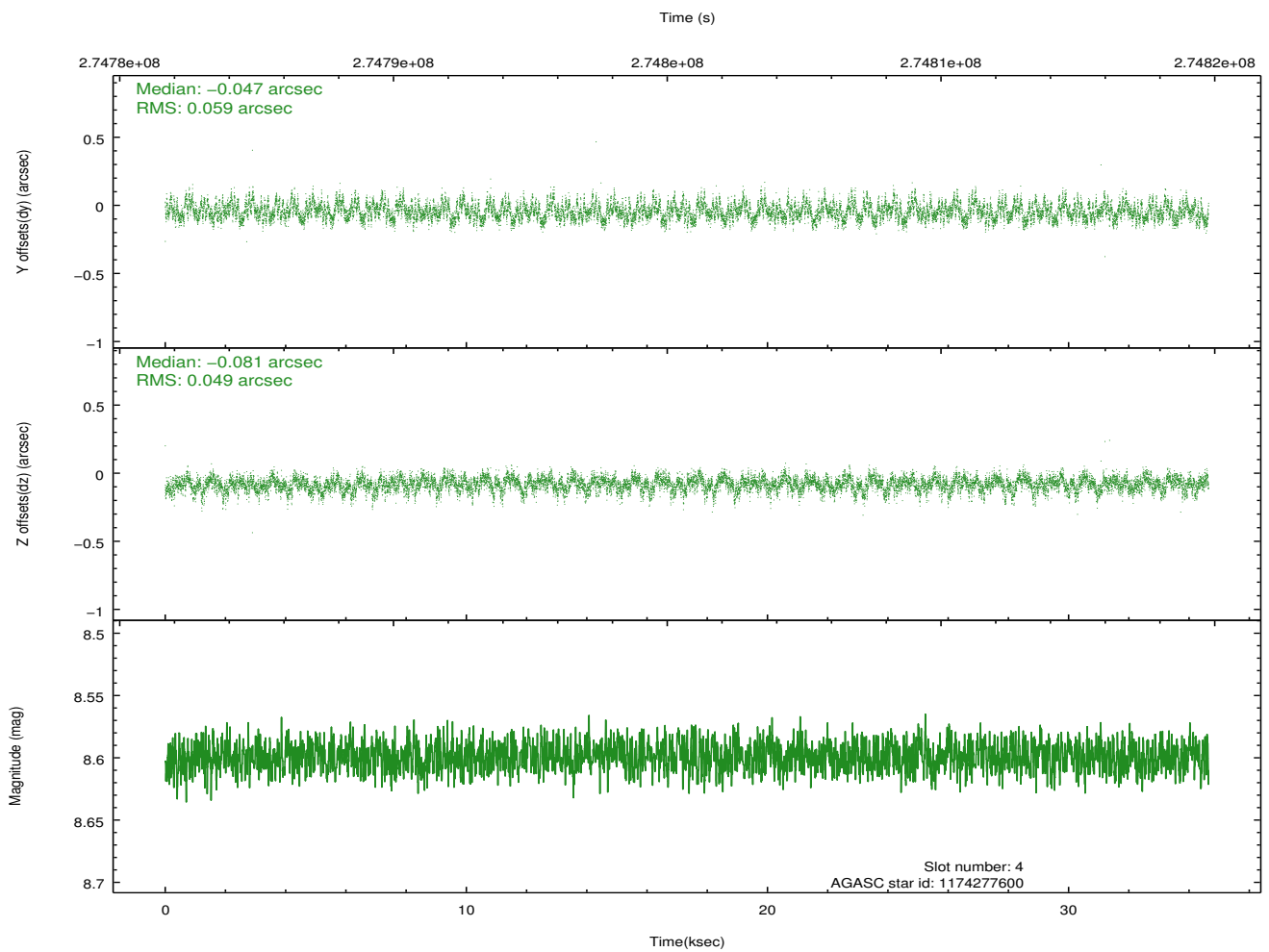
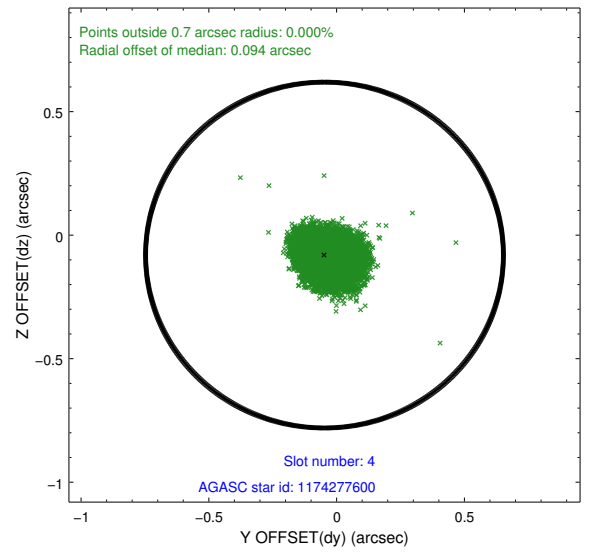
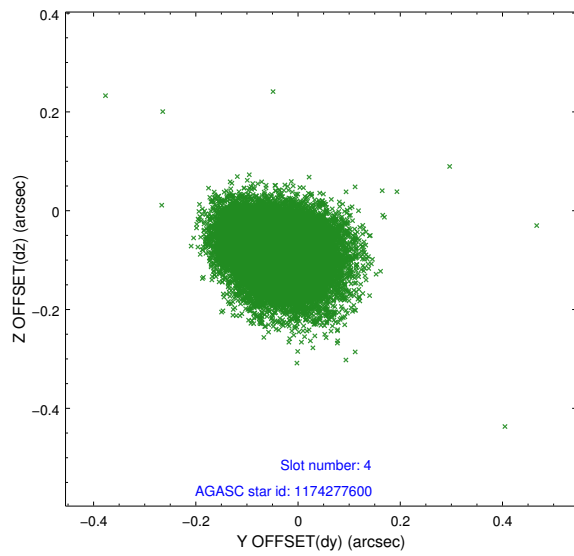
slot	status	id	mag	n_pts	med_dy	med_dz	dr1	dr2	ra	dec	mean_y	mean_z
0	FID	ACIS-S-2	7.11	8451	-0.018	-0.046	0.012	0.035	0.000000	0.000000	-760.94	-1733.49
1	FID	ACIS-S-4	7.20	8451	0.116	0.020	0.008	0.015	0.000000	0.000000	2152.45	175.01
2	FID	ACIS-S-5	7.24	8450	-0.130	0.034	0.012	0.035	0.000000	0.000000	-1813.84	168.74
3	GUIDE	1174171424	8.88	16894	0.181	0.091	0.087	0.145	166.918247	-60.663379	2239.52	-1117.30
4	GUIDE	1174277600	8.60	16895	-0.047	-0.081	0.082	0.132	168.590455	-61.587206	-1030.96	1851.20
5	GUIDE	1174286632	8.69	16892	0.047	-0.091	0.075	0.120	169.069142	-61.673672	-1876.90	2080.17
6	GUIDE	1174157408	7.98	16895	0.040	-0.036	0.065	0.107	167.115550	-61.626529	1461.12	2279.07
7	GUIDE	1174282480	7.04	16900	-0.225	0.113	0.053	0.083	168.099465	-60.378692	283.24	-2383.45

## 2.4 Star Slots

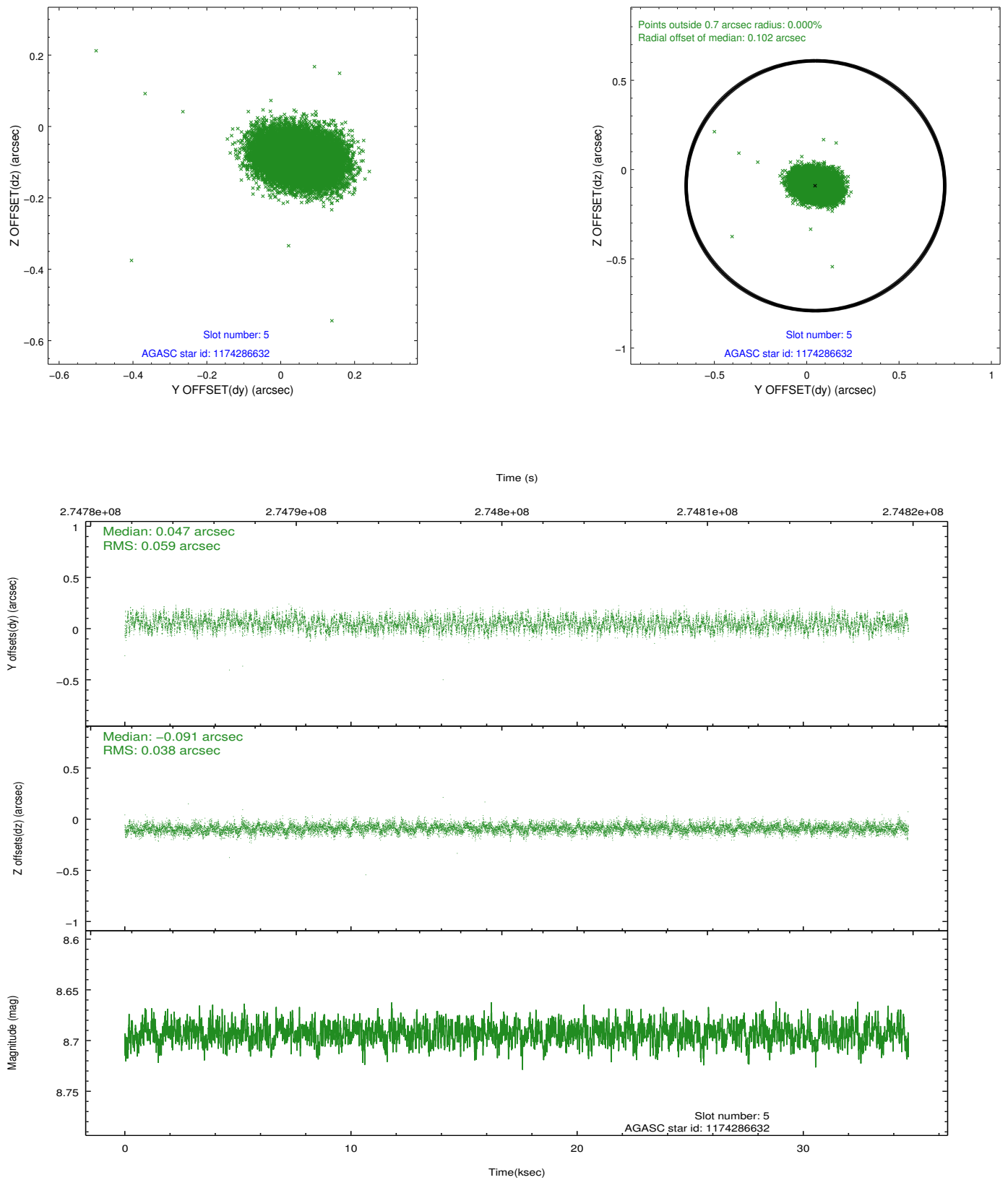
### 2.4.1 Slot 3



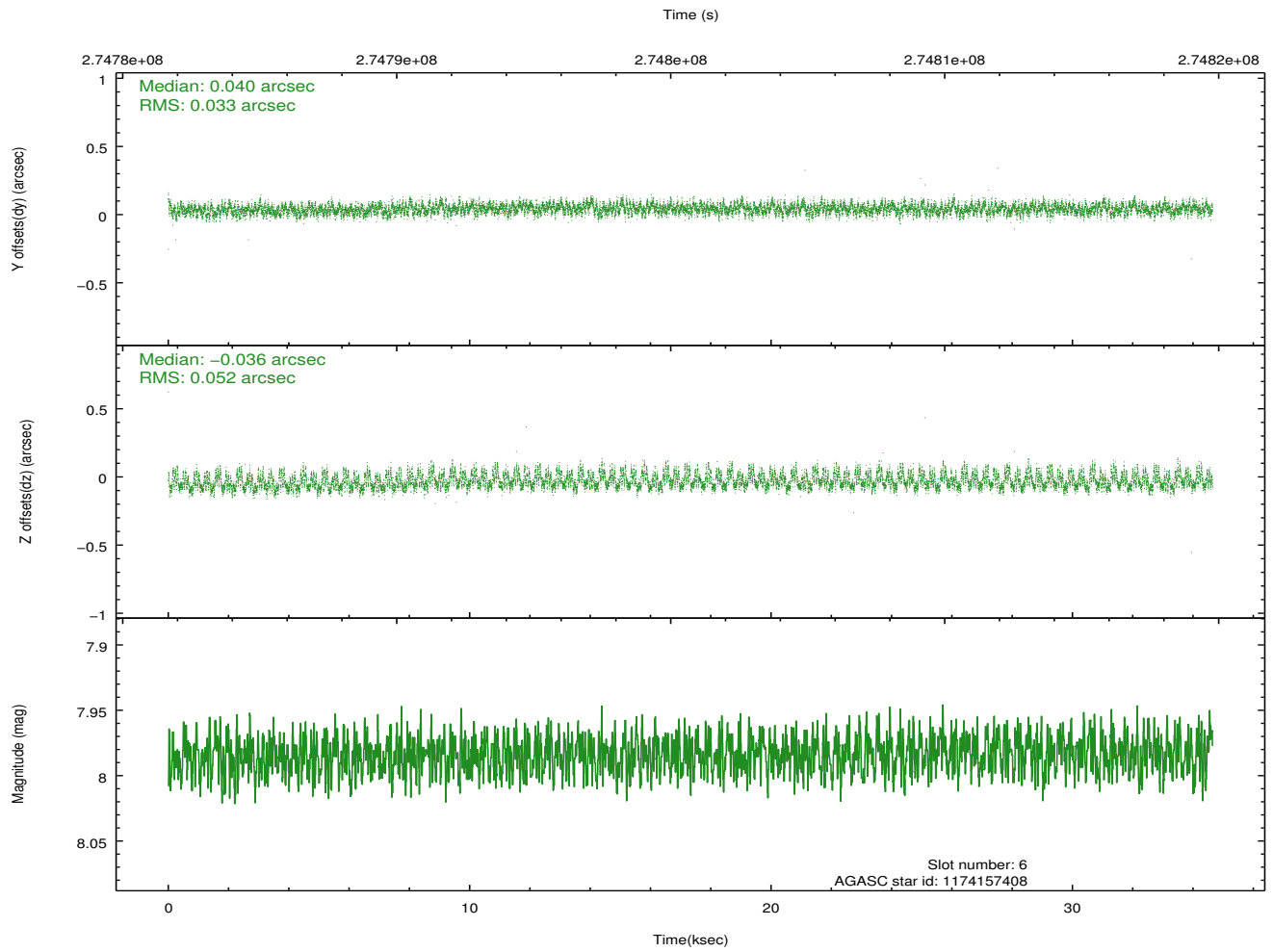
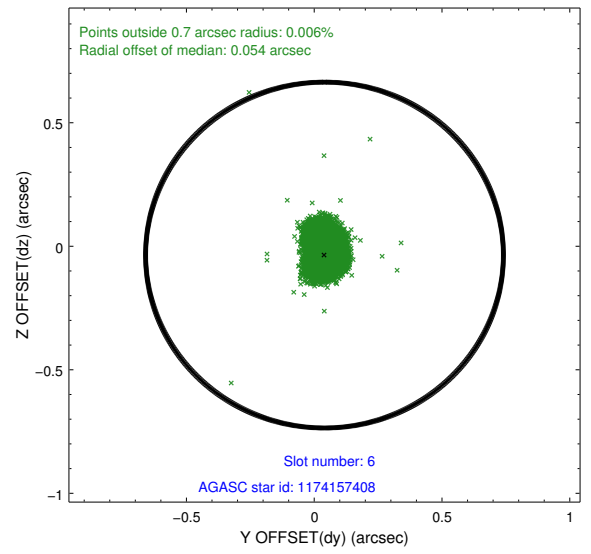
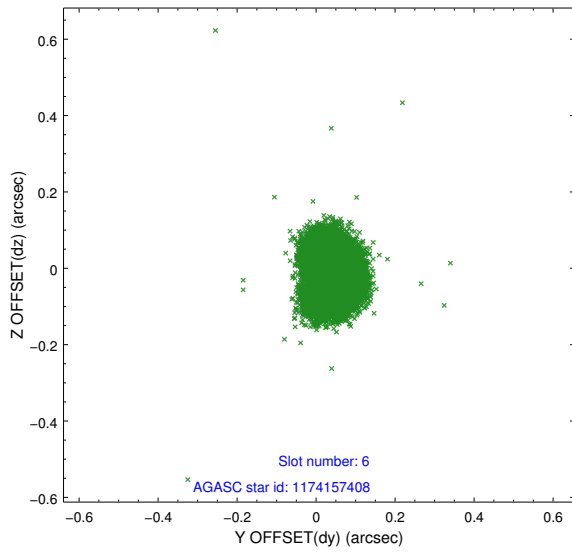
## 2.4.2 Slot 4



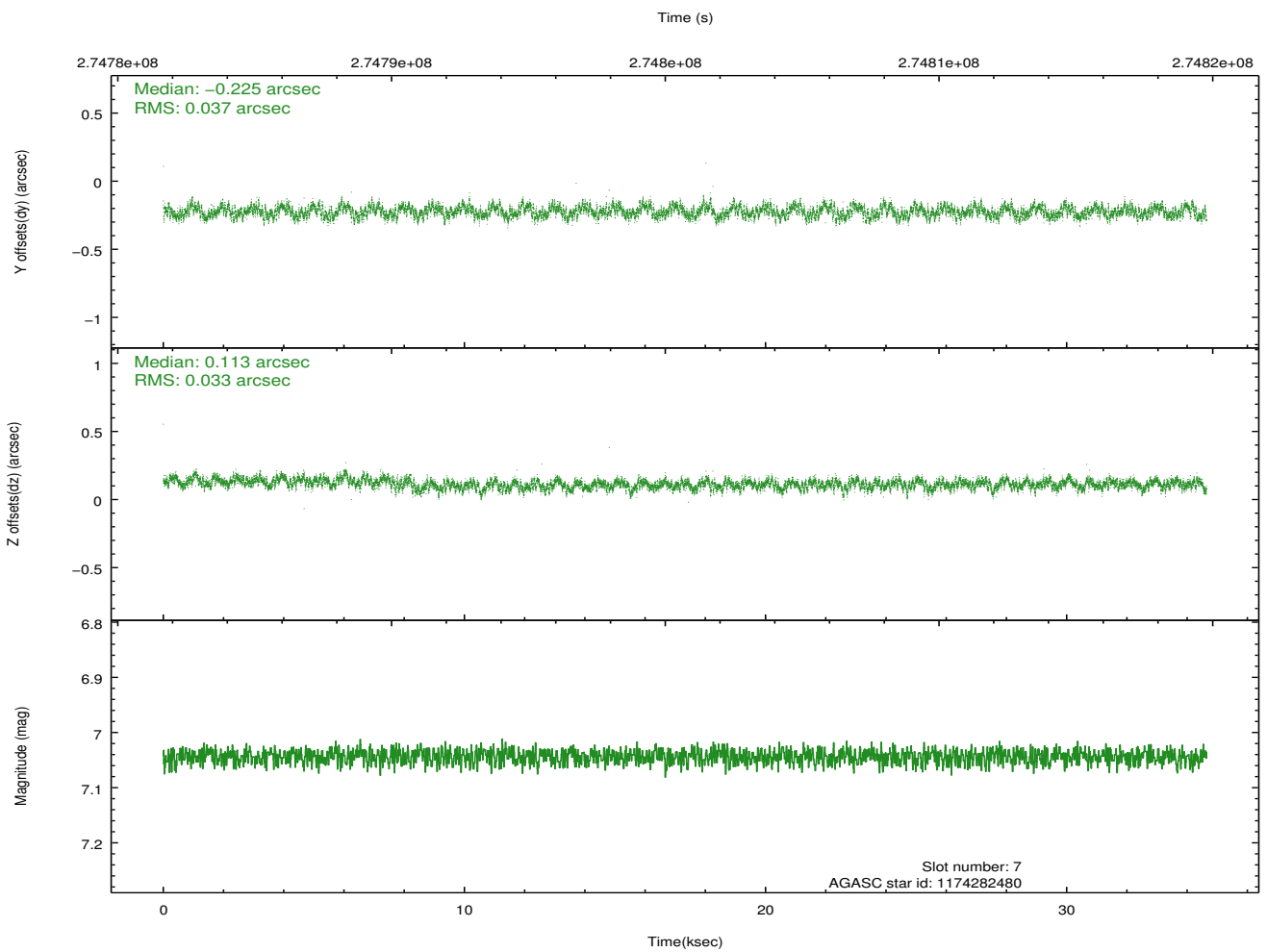
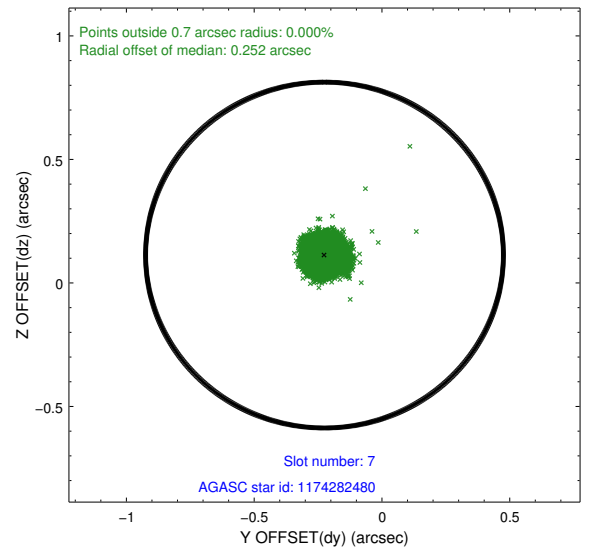
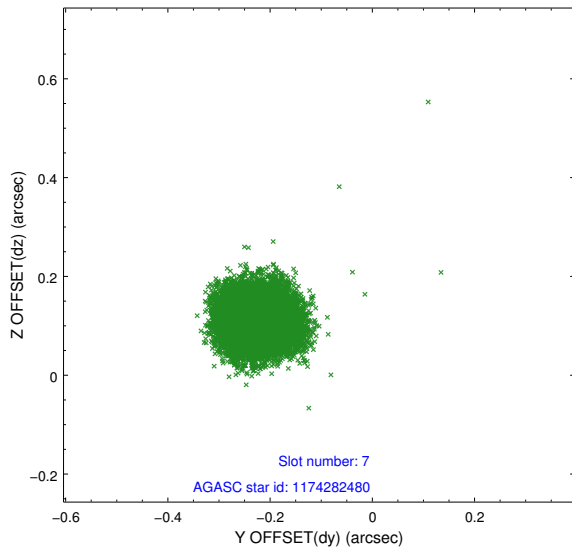
### 2.4.3 Slot 5



### 2.4.4 Slot 6

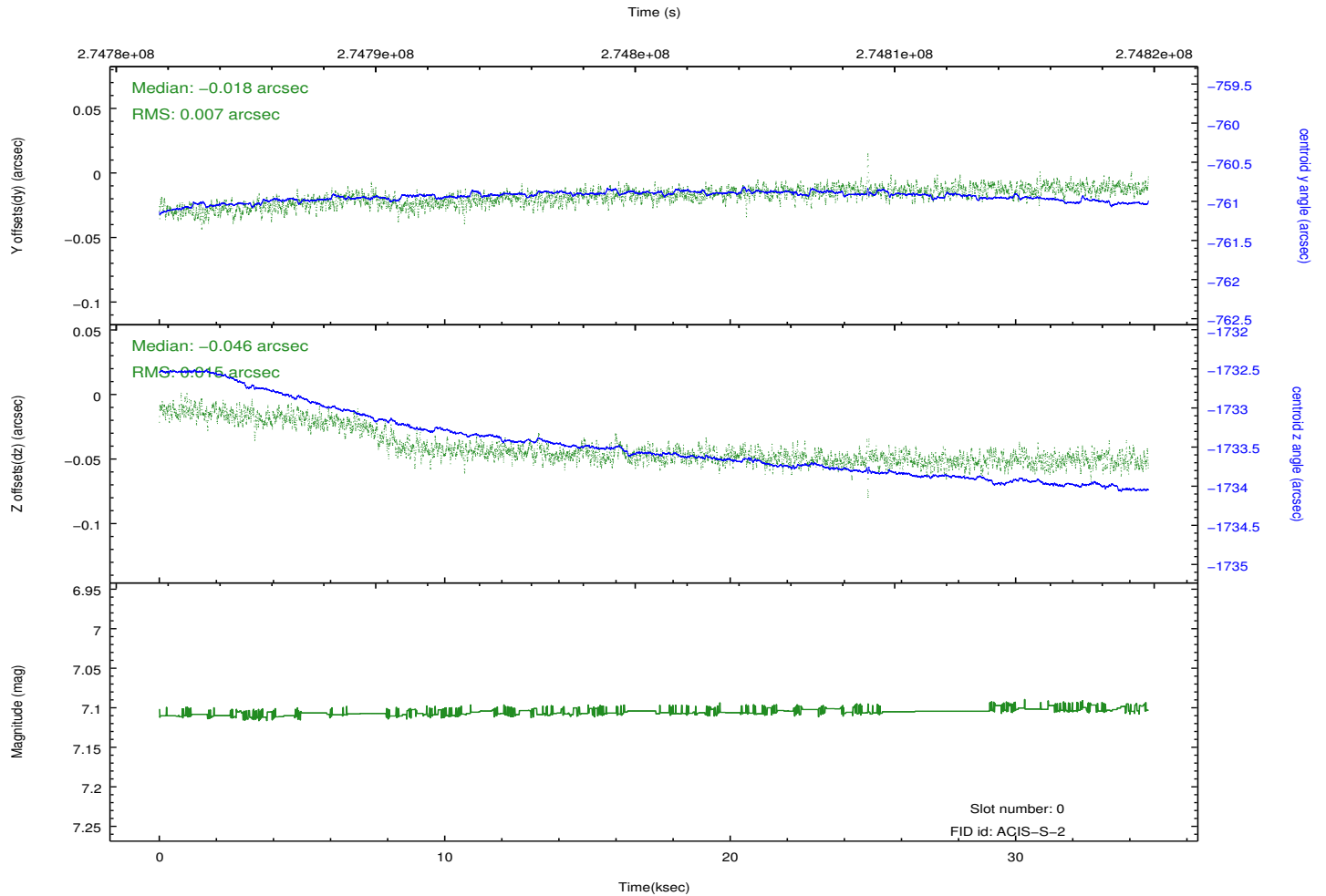
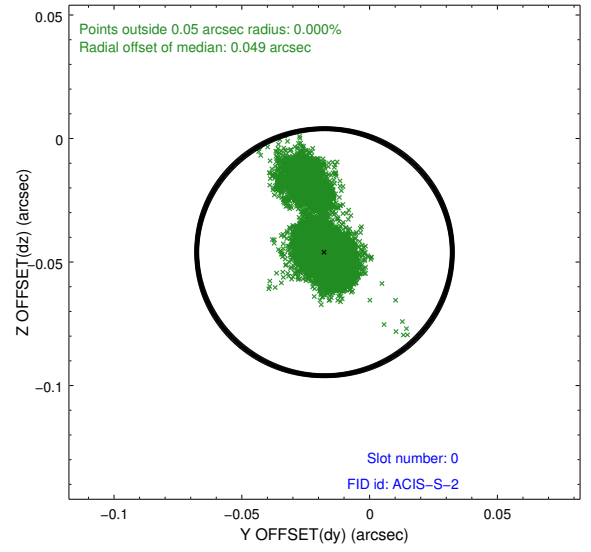
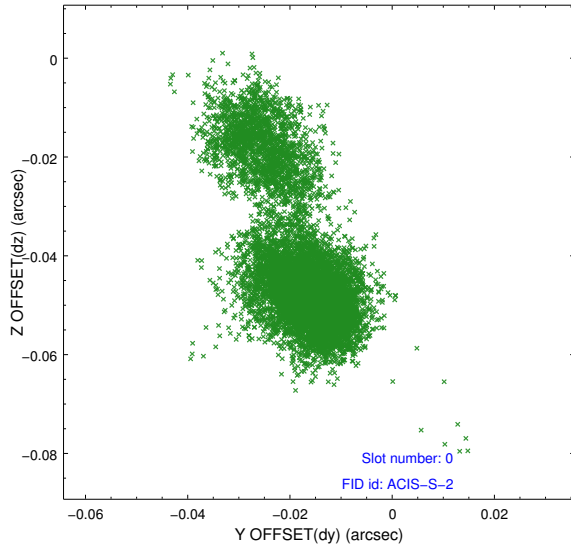


## 2.4.5 Slot 7

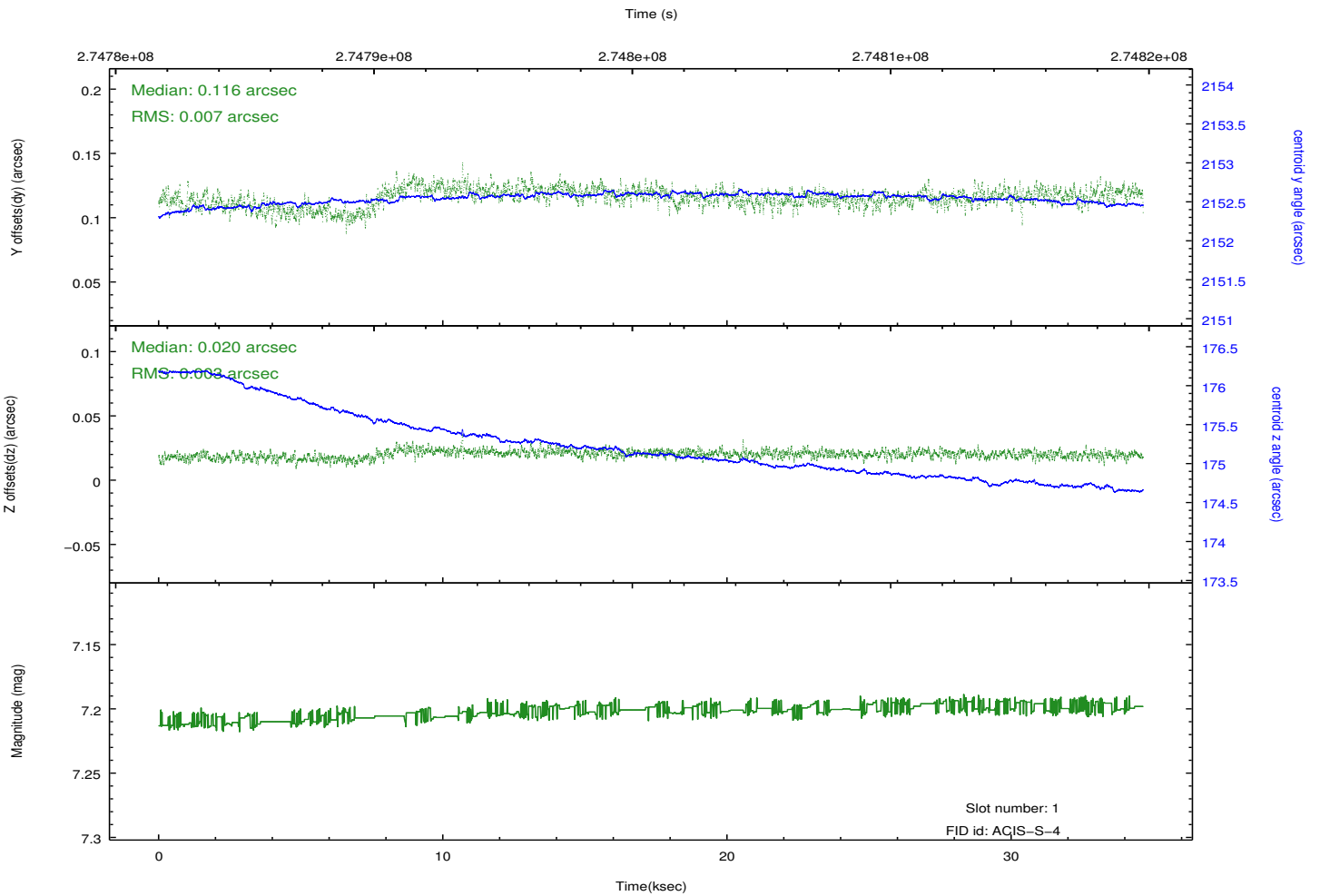
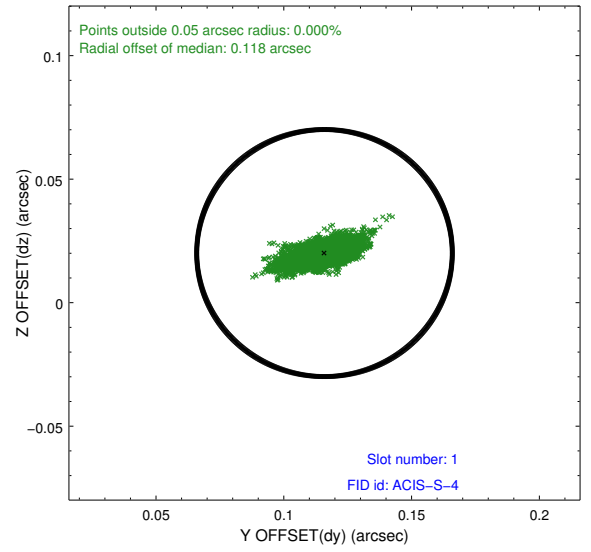
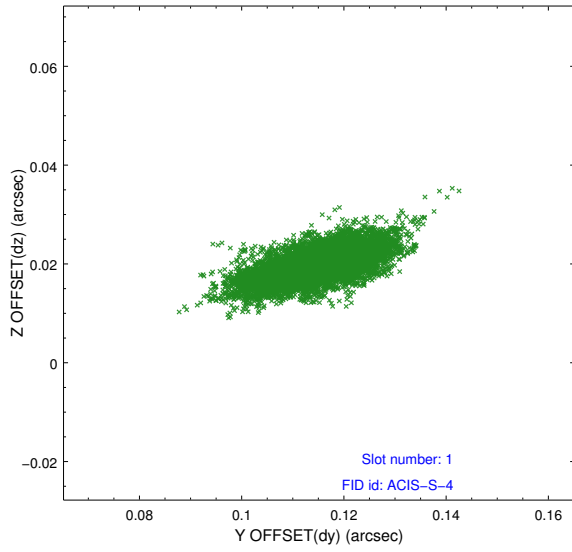


## 2.5 FID Slots

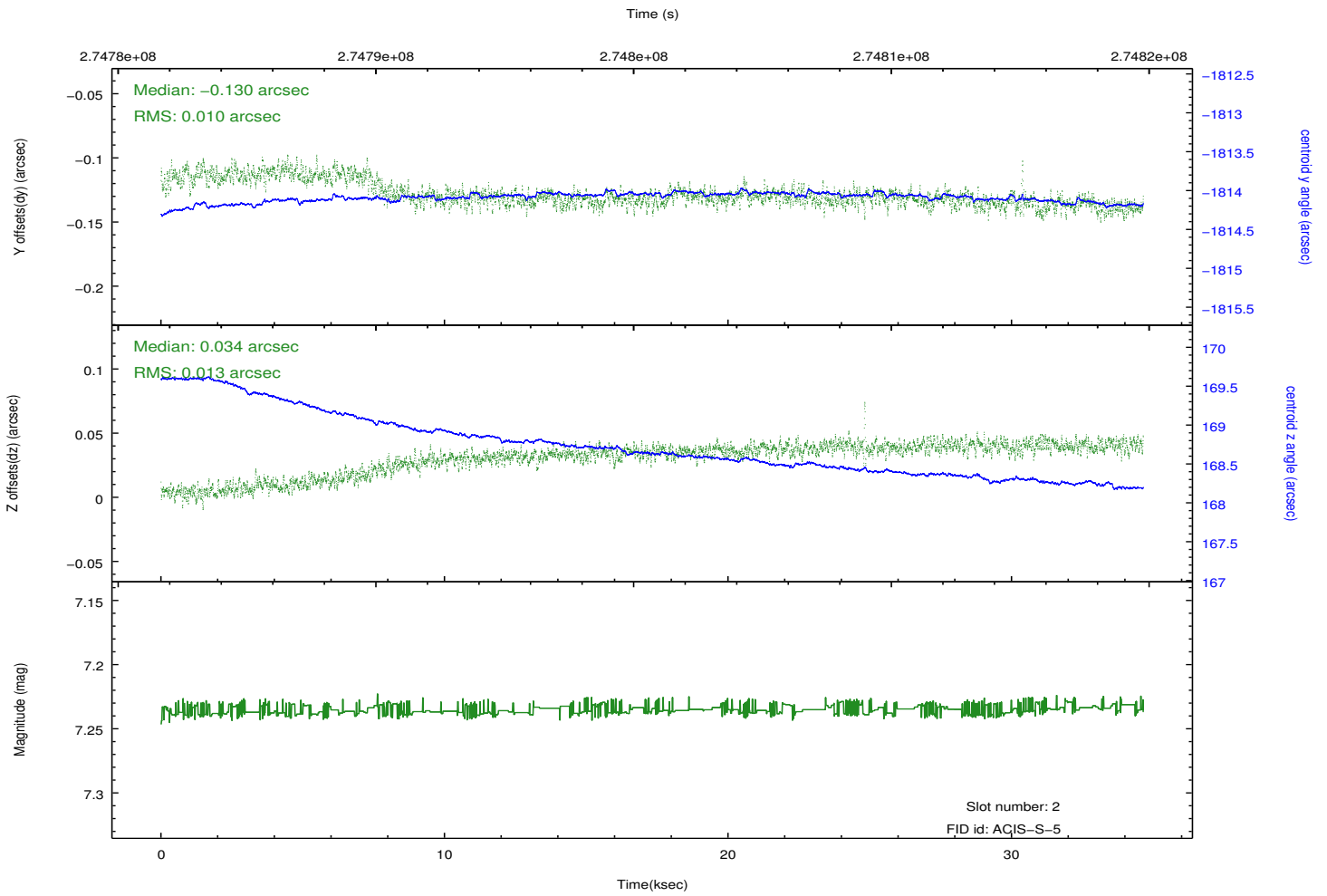
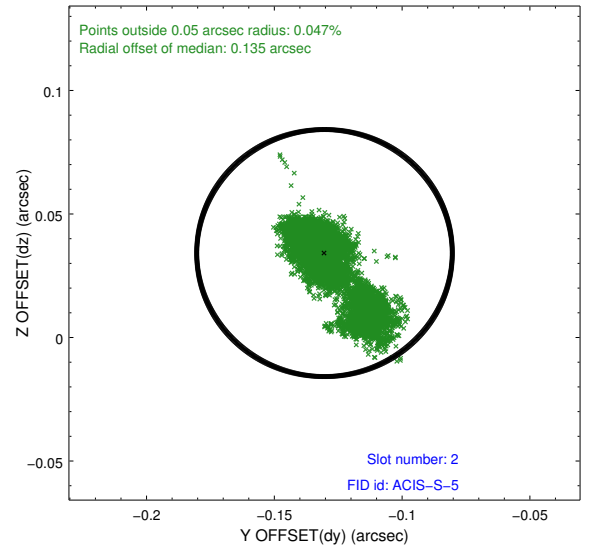
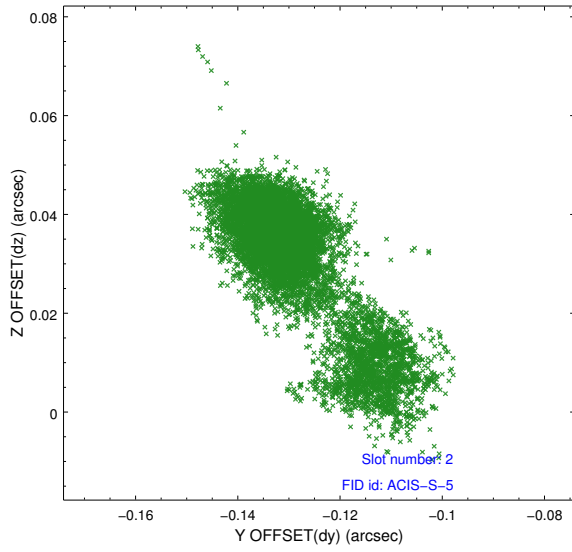
### 2.5.1 Slot 0



## 2.5.2 Slot 1



### 2.5.3 Slot 2



# A Summary

## A.1 Status

V&V Scientist	Beth Sundheim
V&V Date (YYYY-MM-DD)	2012.04.10
V&V Edition	1
V&V Disposition and Status	OK
V&V Charge Time	34.6445007

## A.2 Comments