

# V&V Reference Report

## L2 ASCDS Version : 8.4.3.1

Observation 6946 - L2 Version 2  
Chandra X-Ray Center

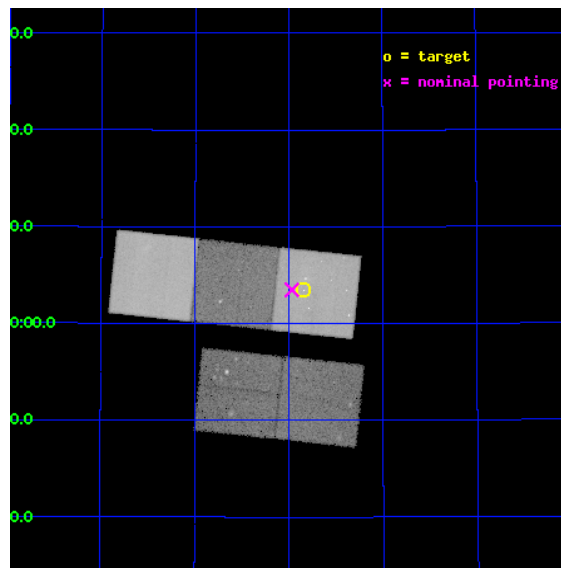
L2 Processing Date : Apr 10 2012

## Contents

<b>1</b>	<b>Front</b>	<b>2</b>
<b>2</b>	<b>OBI</b>	<b>3</b>
2.1	OBI . . . . .	3
2.1.1	Images . . . . .	3
2.1.2	Bias . . . . .	3
2.1.3	Parameters . . . . .	4
2.1.4	Events . . . . .	4
2.2	Compared Parameters . . . . .	5
2.3	Aspect . . . . .	6
2.4	Star Slots . . . . .	9
2.4.1	Slot 3 . . . . .	9
2.4.2	Slot 4 . . . . .	10
2.4.3	Slot 5 . . . . .	11
2.4.4	Slot 6 . . . . .	12
2.4.5	Slot 7 . . . . .	13
2.5	FID Slots . . . . .	14
2.5.1	Slot 0 . . . . .	14
2.5.2	Slot 1 . . . . .	15
2.5.3	Slot 2 . . . . .	16
<b>A</b>	<b>Summary</b>	<b>17</b>
A.1	Status . . . . .	17
A.2	Comments . . . . .	17

# 1 Front

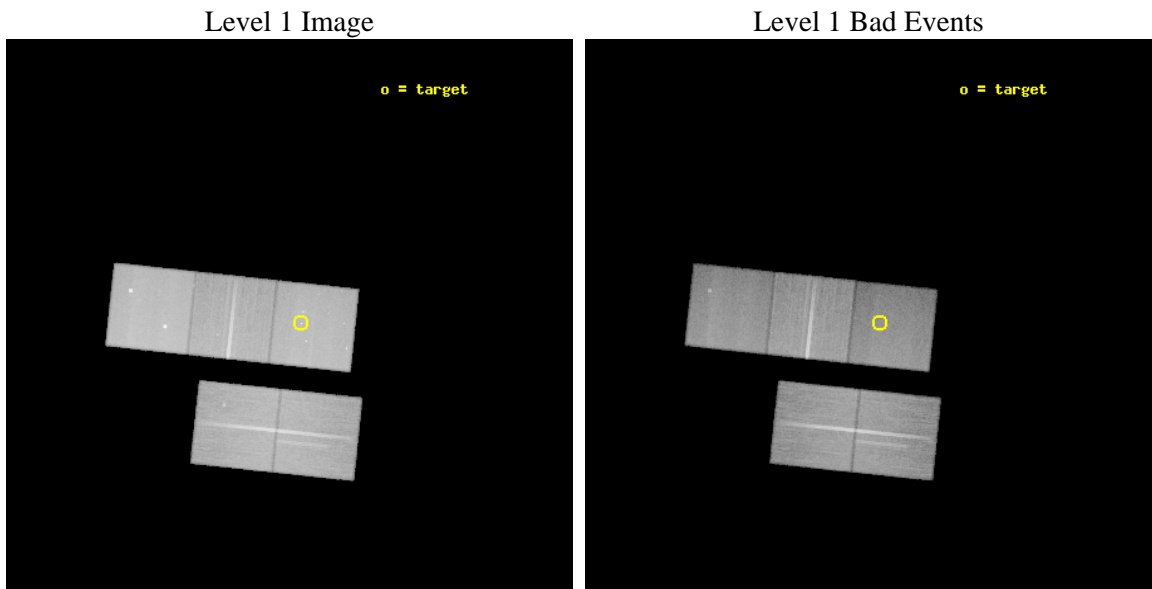
seq_num	800579	Sequence number
obs_id	6946	Observation id
title	The Cosmological Formation of Galaxy Groups	Proposal title
observer	Dr. DAVID BUOTE	Principal investigator
object	RXC J1134.8+4903	Source name
dtcycle	0	&#160
cycle	P	events from which exps? Prim/Second/Both
ra_targ	173.710417	Observer's specified target RA [deg]
dec_targ	49.057778	Observer's specified target Dec [deg]
ra_nom	173.74211134243	Nominal RA [deg]
dec_nom	49.058250788112	Nominal Dec [deg]
roll_nom	6.053991322605	Nominal Roll [deg]
revision	2	Processing version of data
ontime	47885.700368285	Sum of GTIs [s]
livetime	47260.038440034	Livetime [s]
ontime2	47876.277477324	Sum of GTIs [s]
ontime3	47879.418407798	Sum of GTIs [s]
ontime5	47885.700368285	Sum of GTIs [s]
ontime6	47882.559408009	Sum of GTIs [s]
ontime7	47885.700368285	Sum of GTIs [s]
l2events	533920	Number of level 2 events



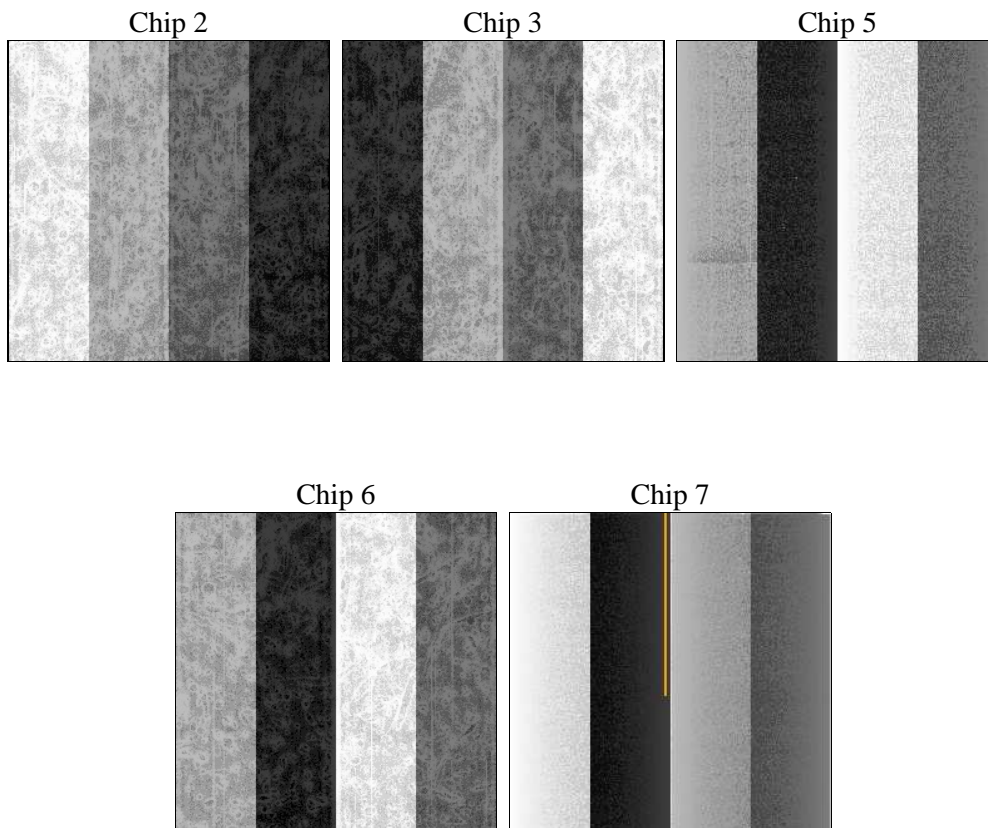
## 2 OBI

### 2.1 OBI

#### 2.1.1 Images



#### 2.1.2 Bias



### 2.1.3 Parameters

obi_num	0	Obi number	sched_exp_time	47737.000000	[s] Scheduled observation exposure time
ascdsver	8.4.3.1	Processing system revision	ontime	47885.700368285	Sum of GTIs [s]
caldbver	4.4.9	&#160	ontime2	47876.277477324	Sum of GTIs [s]
date	2012-04-10T08:53:53	Date and time of file creation	ontime3	47879.418407798	Sum of GTIs [s]
revision	2	Processing version of data	ontime5	47885.700368285	Sum of GTIs [s]
			ontime6	47882.559408009	Sum of GTIs [s]
			ontime7	47885.700368285	Sum of GTIs [s]
			l1events	2064880	Number of level 1 events

### 2.1.4 Events

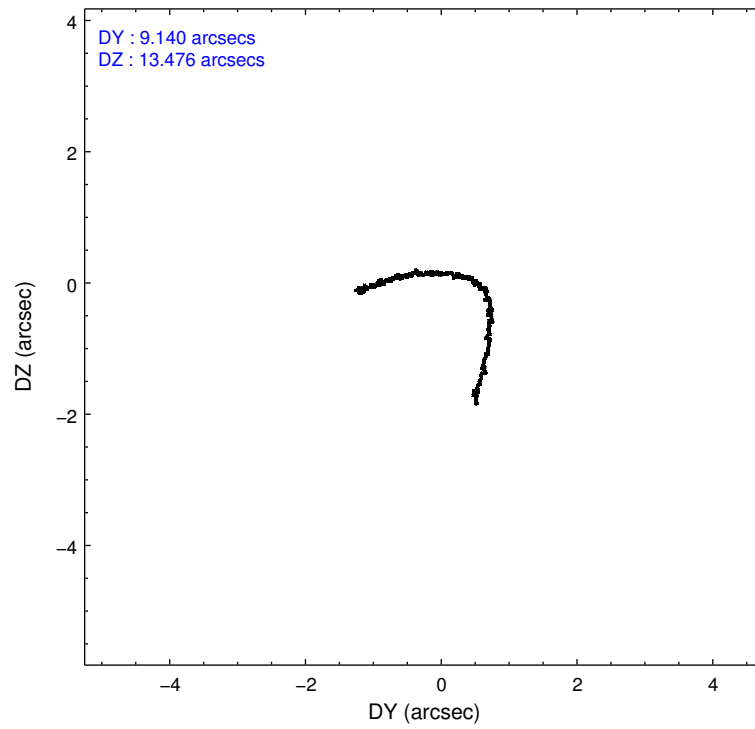
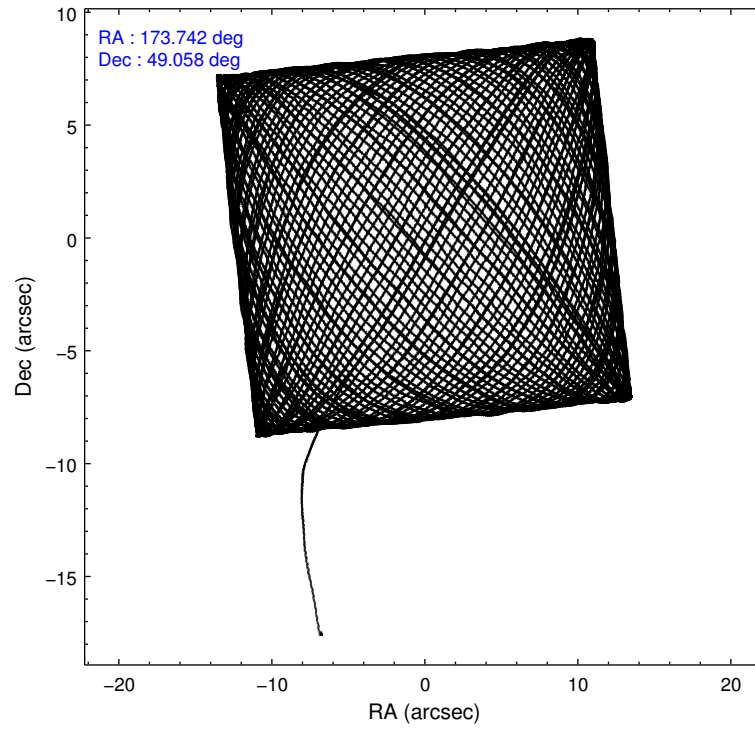
	ccd 2	ccd 3	ccd 5	ccd 6	ccd 7
level 1 events	387618	363204	503130	380448	430480
rejected events	351190	328891	255197	335927	223899
rejected %	90%	90%	50%	88%	52%

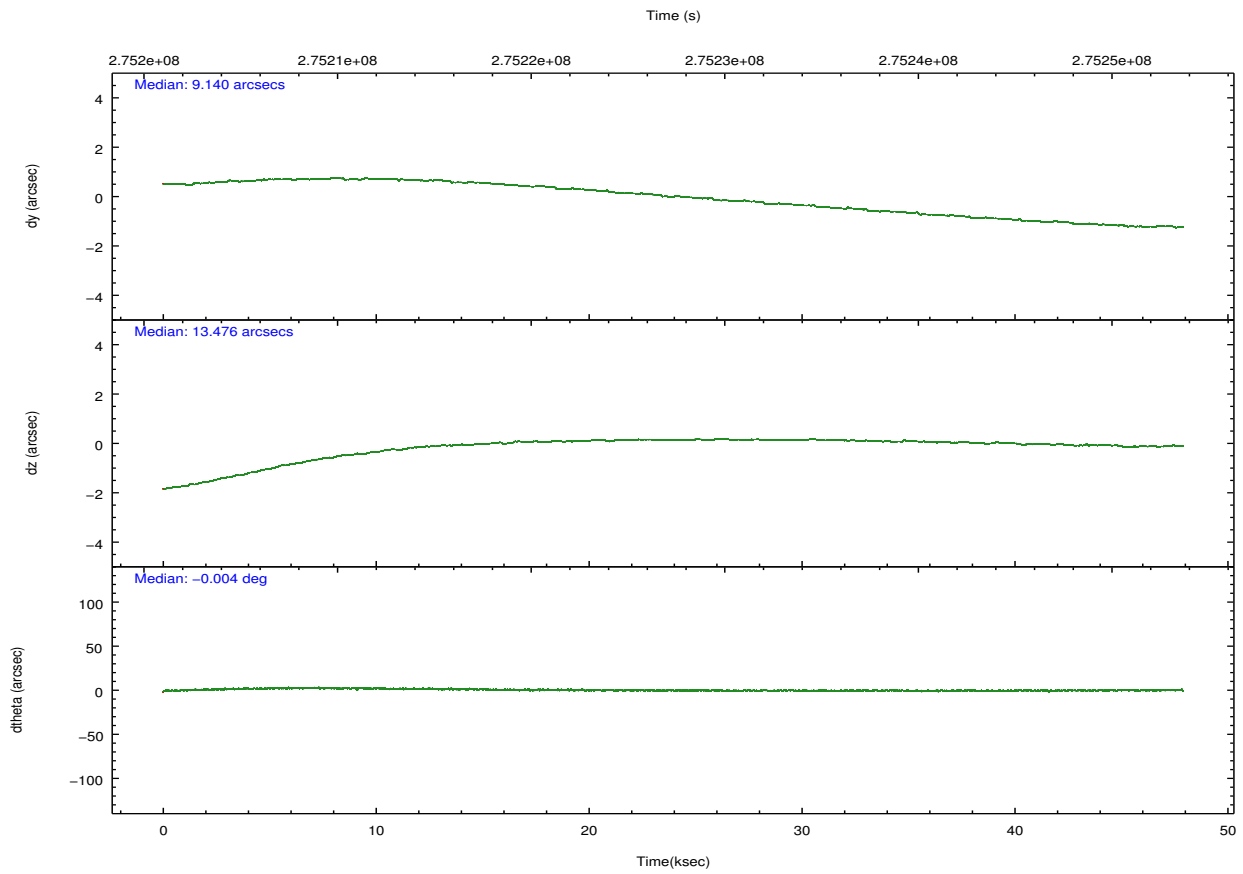
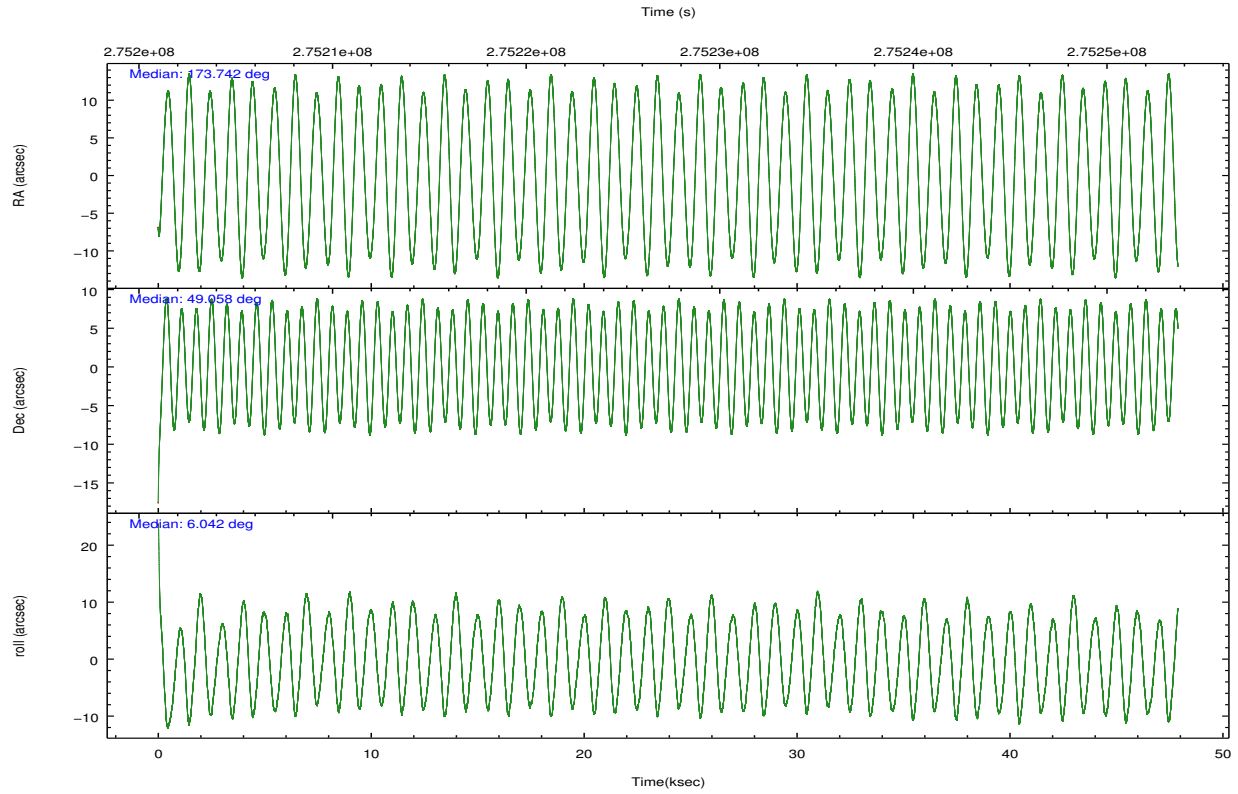
	ccd 2	ccd 3	ccd 5	ccd 6	ccd 7
grade 0 events	14001	12606	24124	18933	23611
	3%	3%	4%	4%	5%
grade 1 events	251	195	1236	204	394
	0%	0%	0%	0%	0%
grade 2 events	8375	7306	73081	9019	43645
	2%	2%	14%	2%	10%
grade 3 events	3897	3990	11036	4298	20023
	1%	1%	2%	1%	4%
grade 4 events	3961	3915	10750	4338	19638
	1%	1%	2%	1%	4%
grade 5 events	11639	14382	39719	14535	43313
	3%	3%	7%	3%	10%
grade 6 events	6468	6730	130693	8187	100892
	1%	1%	25%	2%	23%
grade 7 events	339026	314080	212491	320934	178964
	87%	86%	42%	84%	41%

## 2.2 Compared Parameters

Parameter	Planned	Actual	Parameter	Planned	Actual
Instrument	ACIS	ACIS	Obspar format version number	7	7
Detector	ACIS-23567	ACIS-23567	Obspar file type	PREDICTED	ACTUAL
Grating	NONE	NONE	Obspar update status	NONE	UPDATED
Data mode	VFAINT	VFAINT	Number of optional ACIS chips dropped	0	0
Observation mode	POINTING	POINTING	On-chip summing requested	N	N
[deg] Pointing RA	173.708842	173.7421113424326	Subarray requested	NONE	NONE
[deg] Pointing Dec	49.041912	49.05825078811171	Alternating exposures requested	N	N
[deg] Pointing Roll	5.922490	6.053991322604995	[s] Primary exposure time	0.000000	3.1
[mm] SIM focus pos	-0.684267	-0.6828225247311905			
[mm] SIM defocus	0	0.001444936568705701			
[mm] SIM translation stage pos	-190.132523	-190.1400660498719			
[mm] SIM translation stage offset	0	0.00754346686406393			
[s] Observation start time (MET)	275203542.184000	275202400.96487			
Observation start date	2006-09-21T05:24:37	2006-09-21T05:06:40			
[s] Observation end time (MET)	275251279.184000	275252178.55472			
Observation end date	2006-09-21T18:40:14	2006-09-21T18:56:18			
Read mode	TIMED	TIMED			

## 2.3 Aspect



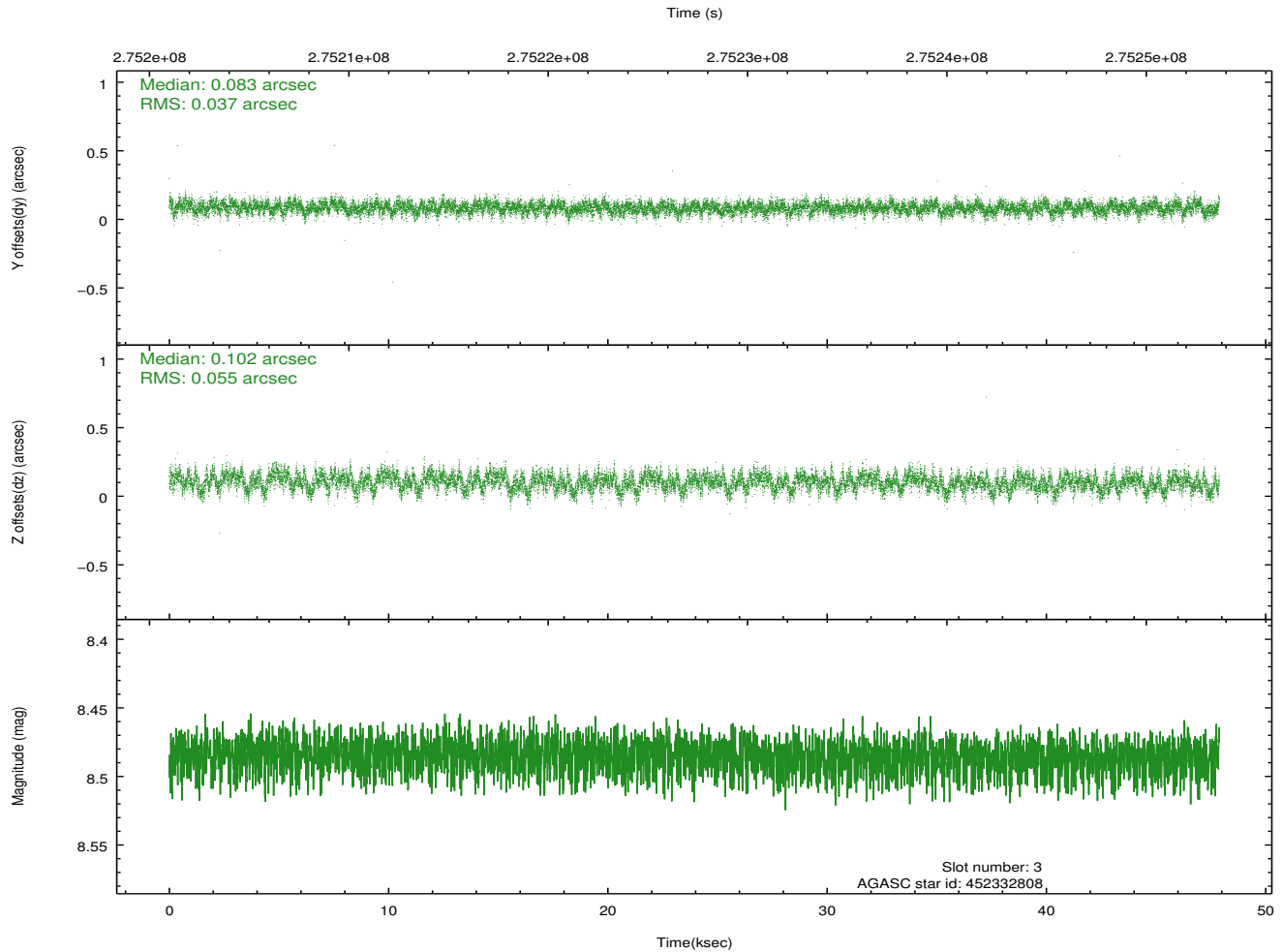
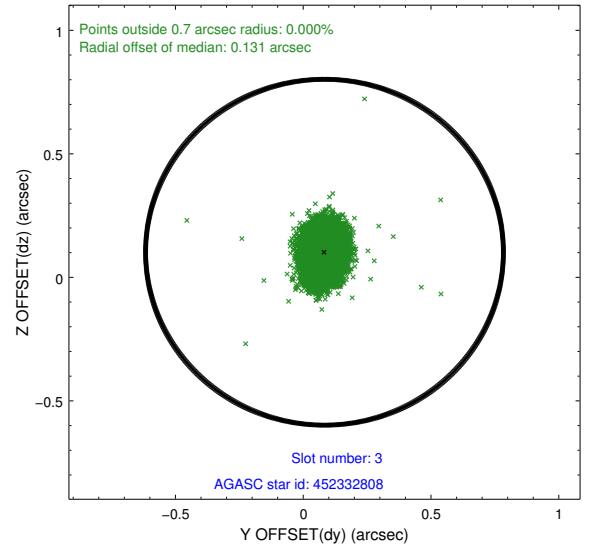
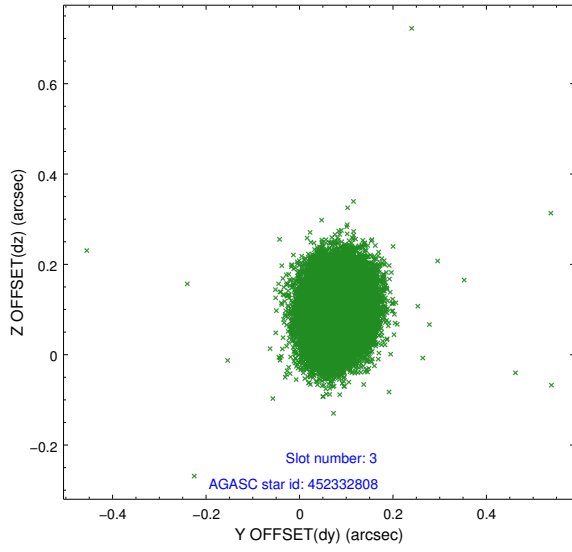


### Slot Statistics

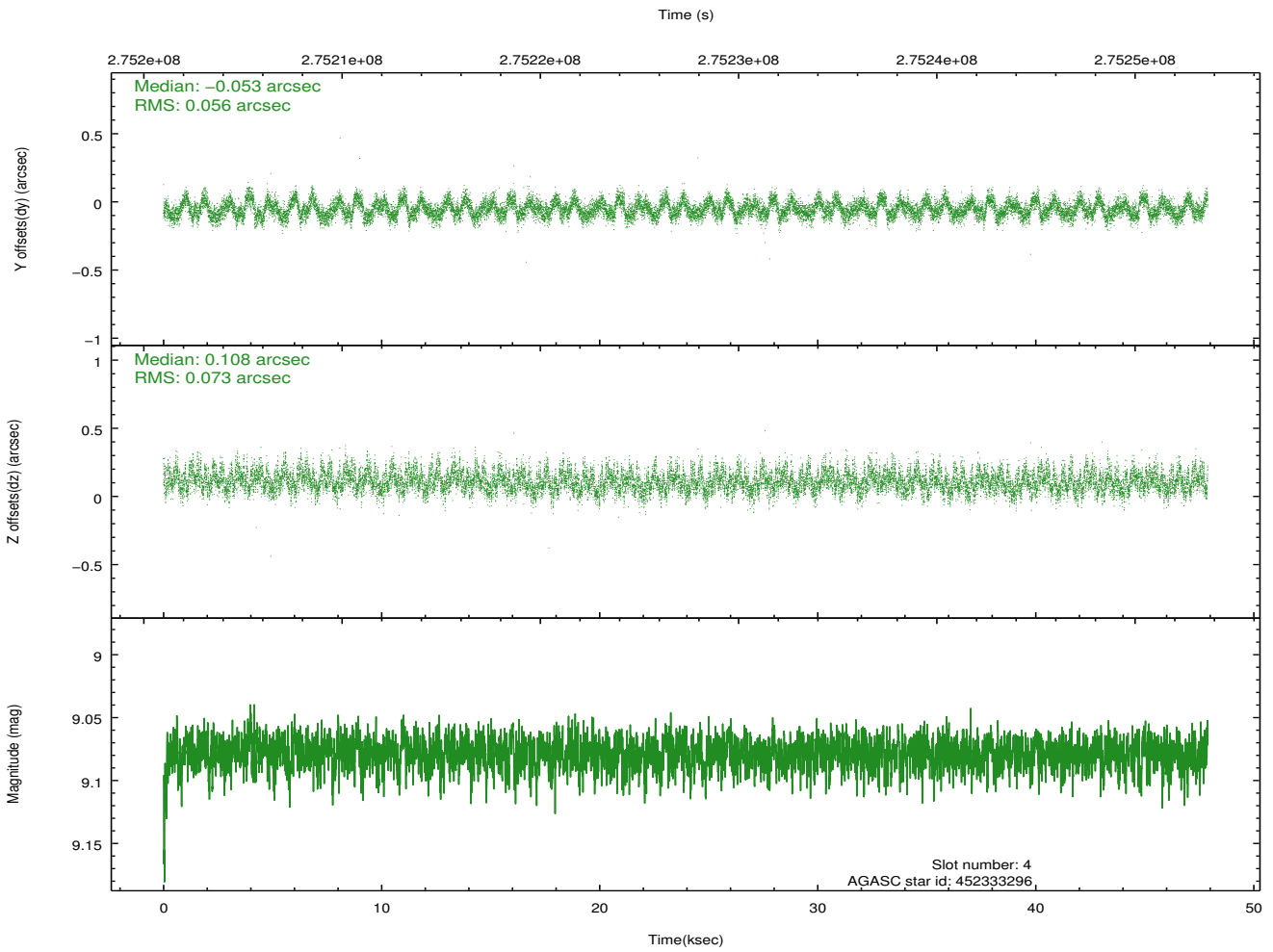
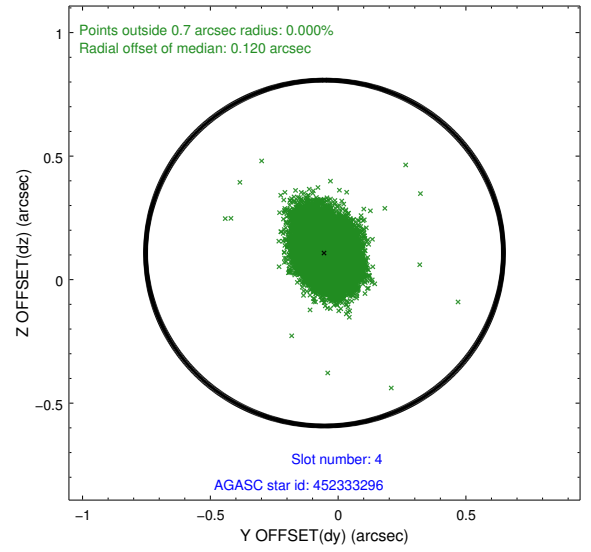
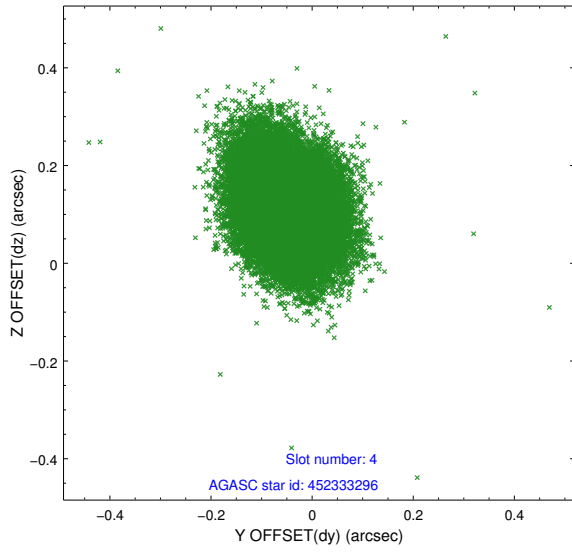
slot	status	id	mag	n_pts	med_dy	med_dz	dr1	dr2	ra	dec	mean_y	mean_z
0	FID	ACIS-S-1	7.19	11681	0.041	-0.018	0.017	0.053	0.000000	0.000000	934.17	-1730.29
1	FID	ACIS-S-4	7.20	11682	0.106	-0.004	0.026	0.044	0.000000	0.000000	2151.67	173.88
2	FID	ACIS-S-5	7.23	11681	-0.171	0.034	0.017	0.028	0.000000	0.000000	-1814.89	167.57
3	GUIDE	452332808	8.49	23352	0.083	0.102	0.069	0.114	173.643720	48.525405	-345.71	-1833.22
4	GUIDE	452333296	9.08	23340	-0.053	0.108	0.098	0.157	173.832148	48.458187	76.56	-2120.21
5	GUIDE	452336184	8.10	23357	0.075	0.088	0.074	0.123	173.530019	48.568124	-599.00	-1652.25
6	GUIDE	452608880	7.59	23359	0.241	-0.091	0.051	0.082	173.209911	49.496006	-991.43	1749.89
7	GUIDE	452738600	8.91	23345	-0.346	-0.201	0.094	0.147	174.521376	49.627496	2102.64	1912.01

## 2.4 Star Slots

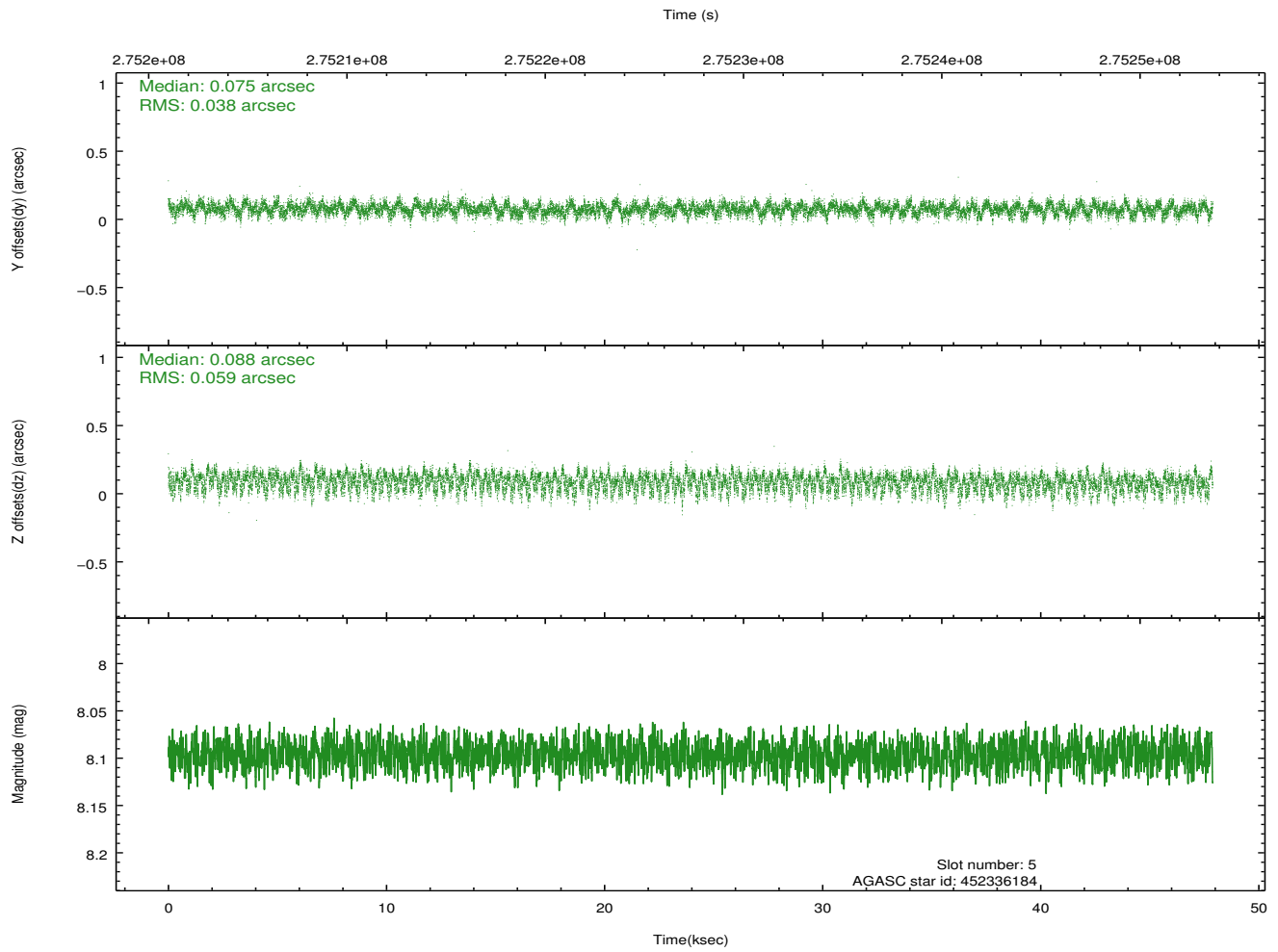
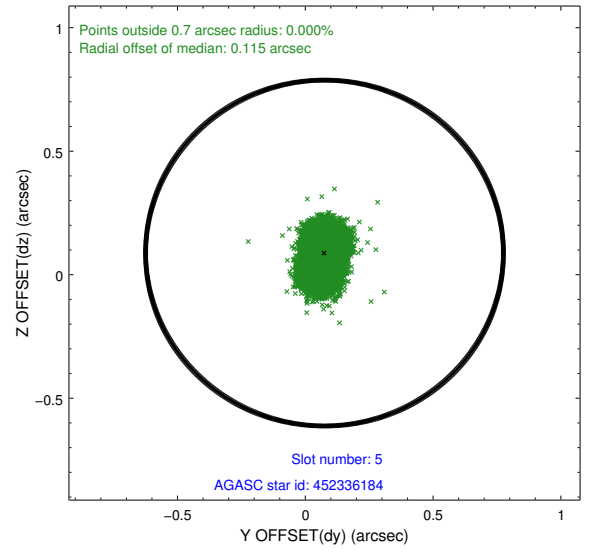
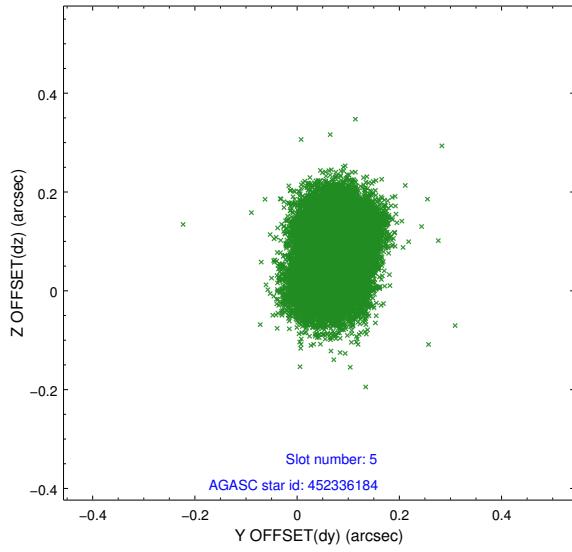
### 2.4.1 Slot 3



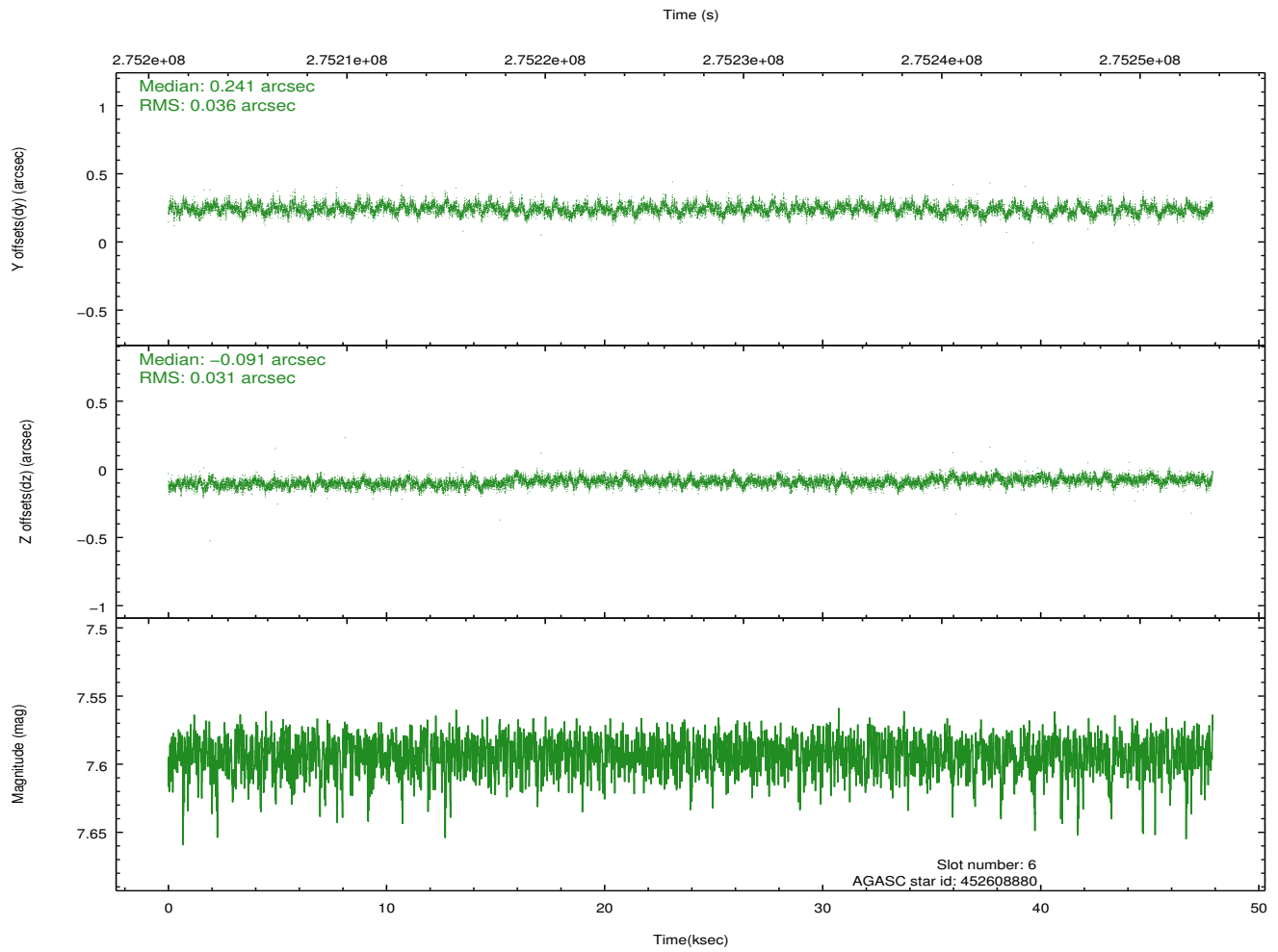
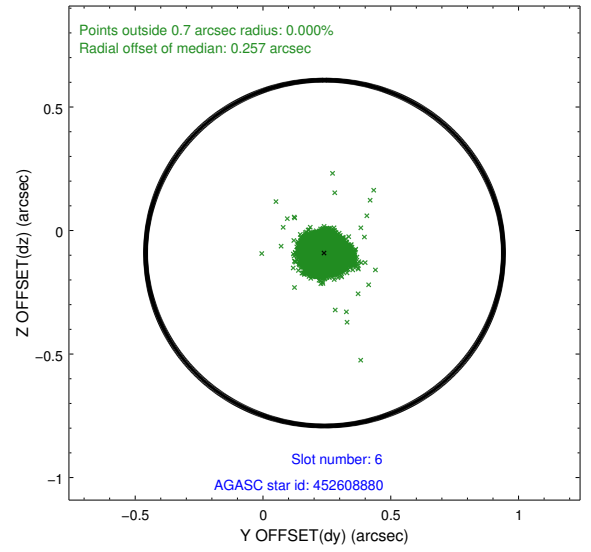
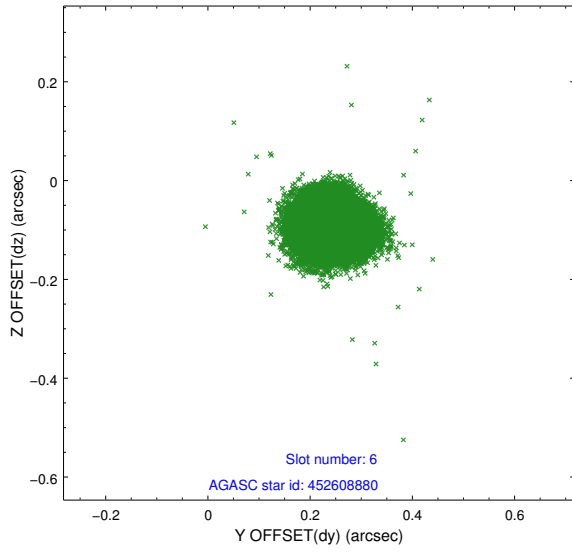
## 2.4.2 Slot 4



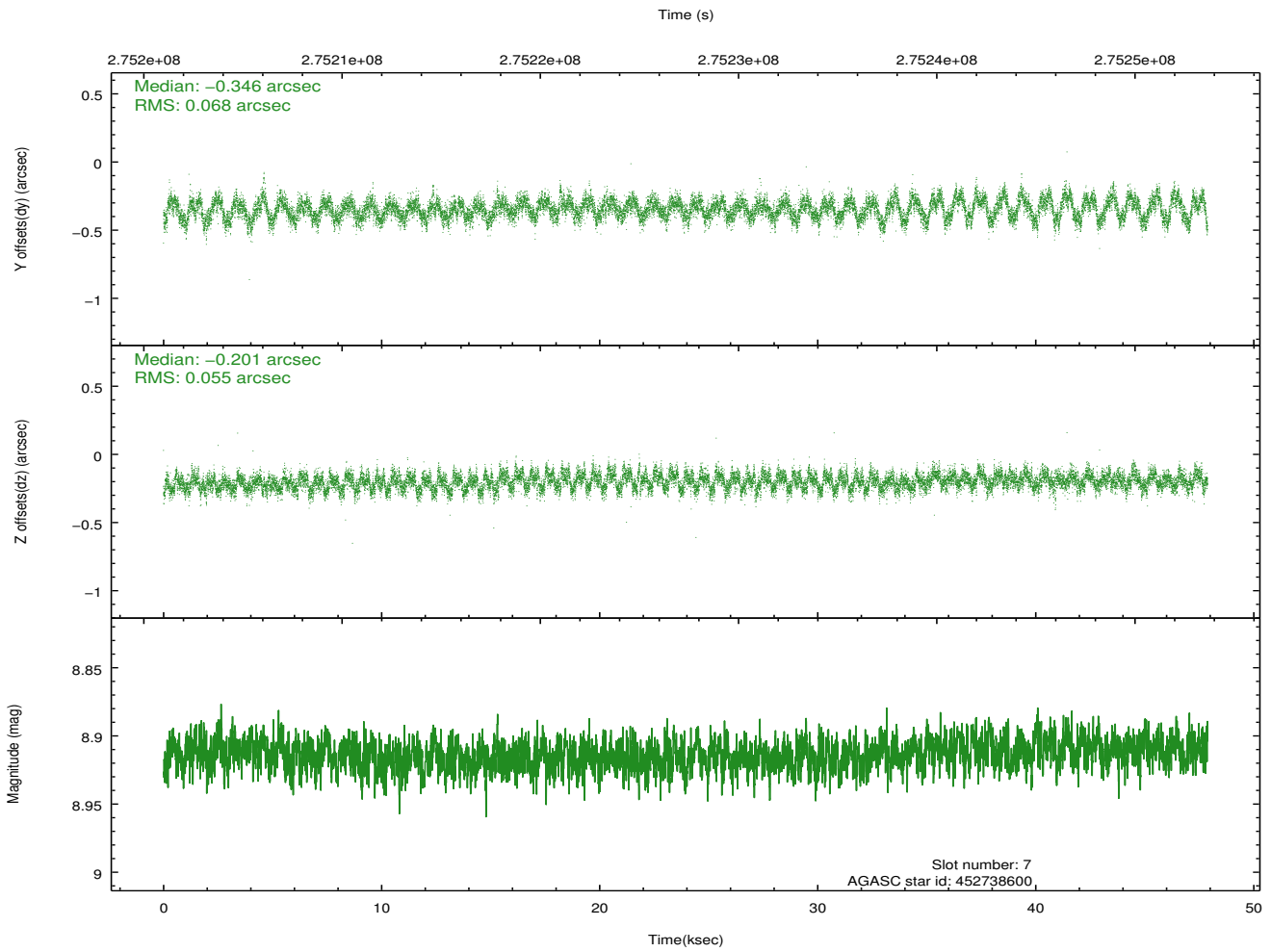
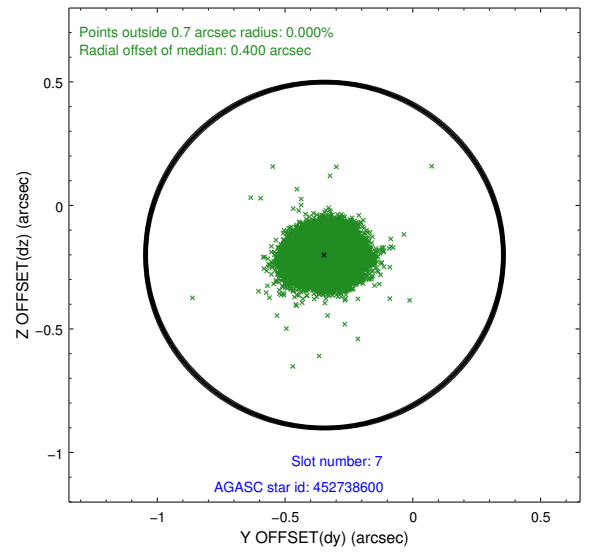
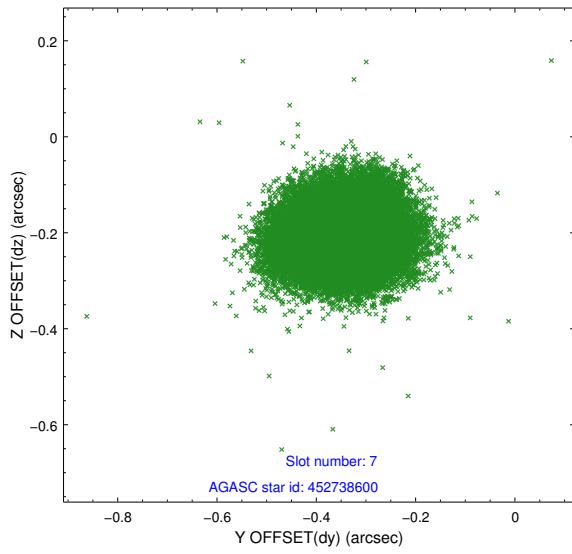
### 2.4.3 Slot 5



### 2.4.4 Slot 6

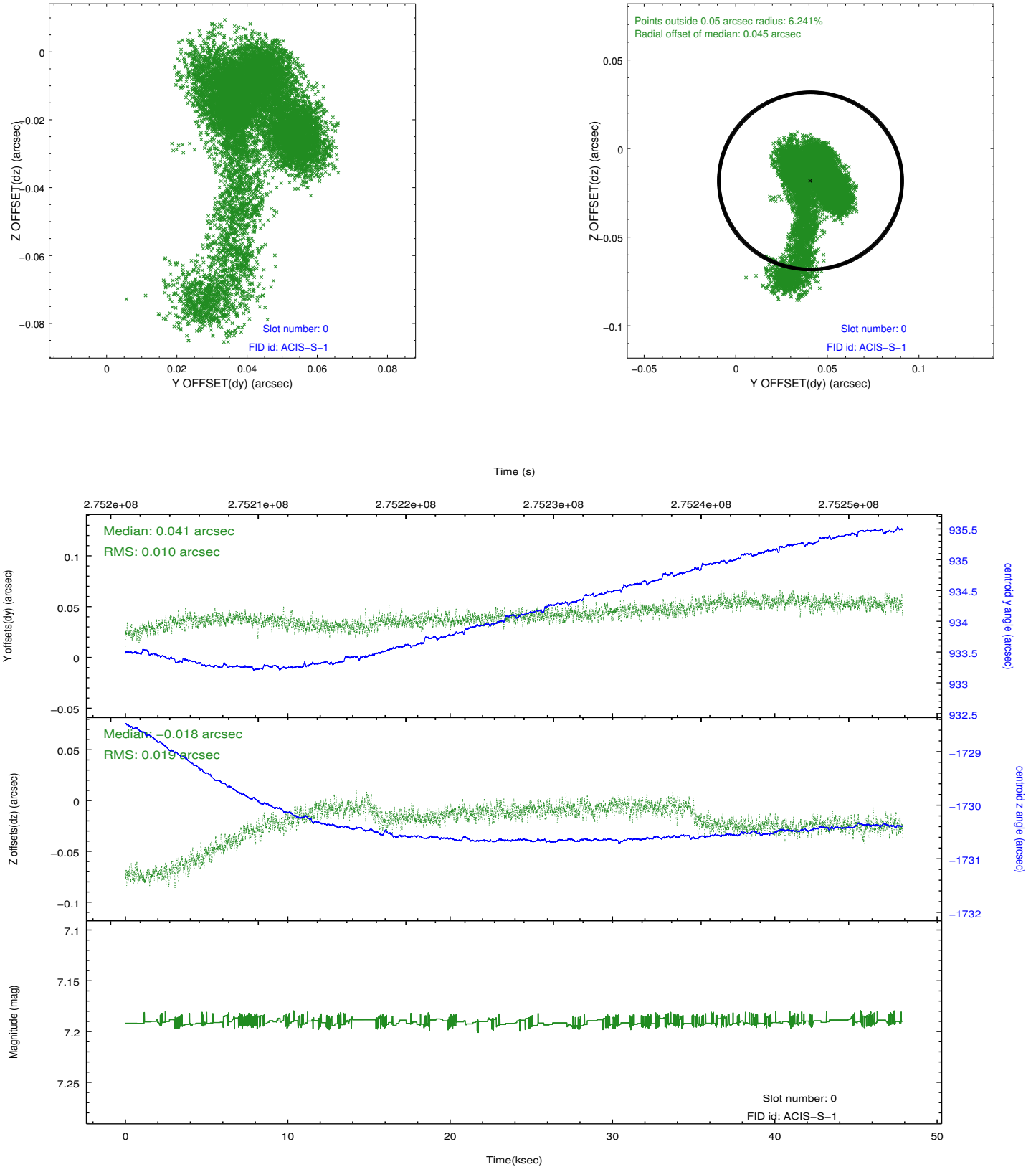


### 2.4.5 Slot 7

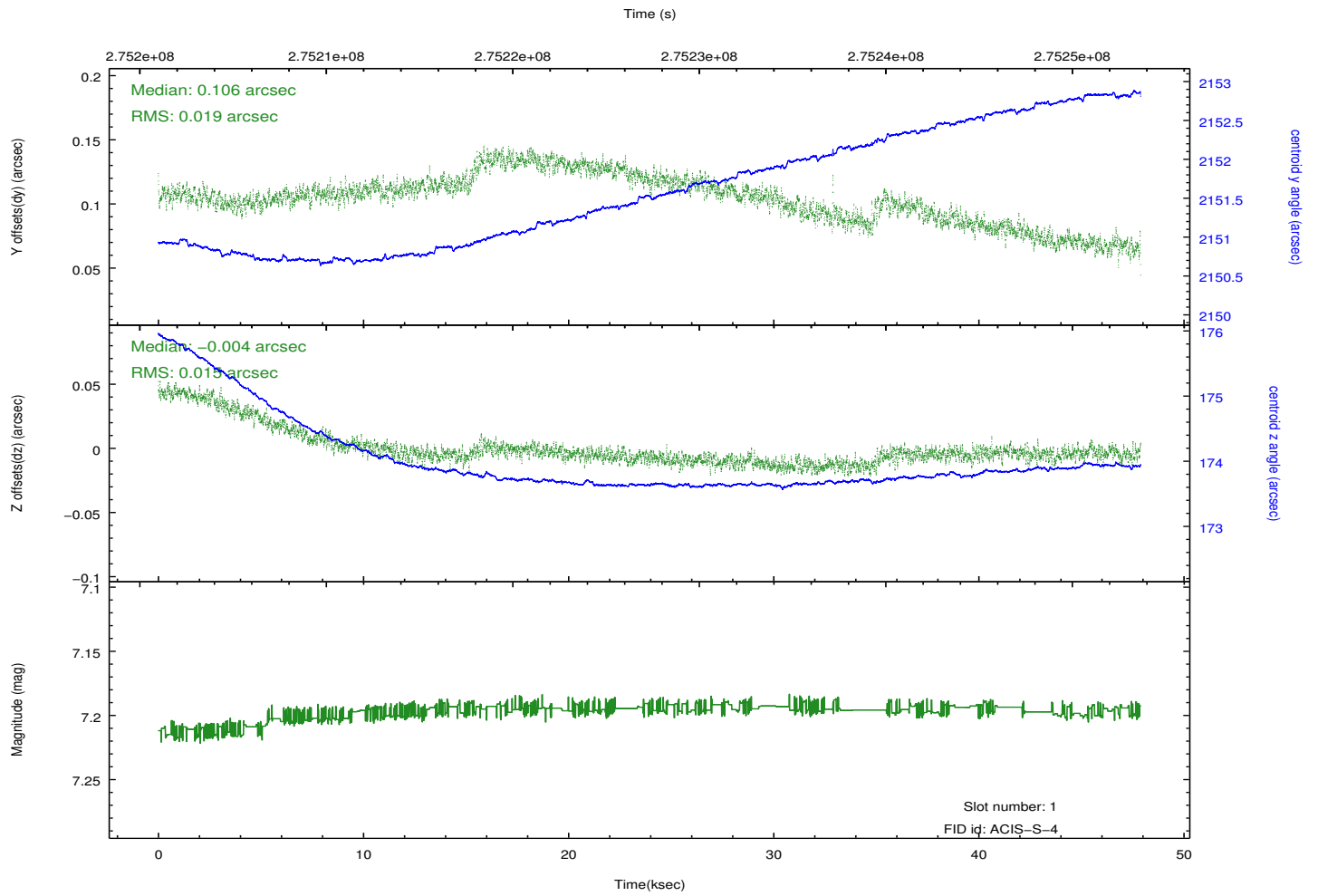
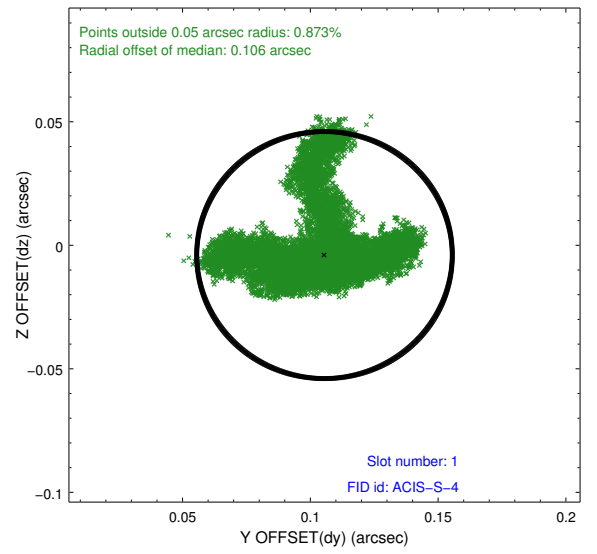
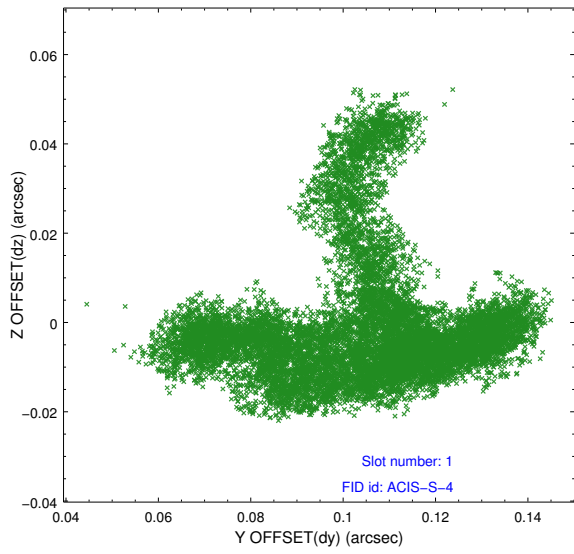


## 2.5 FID Slots

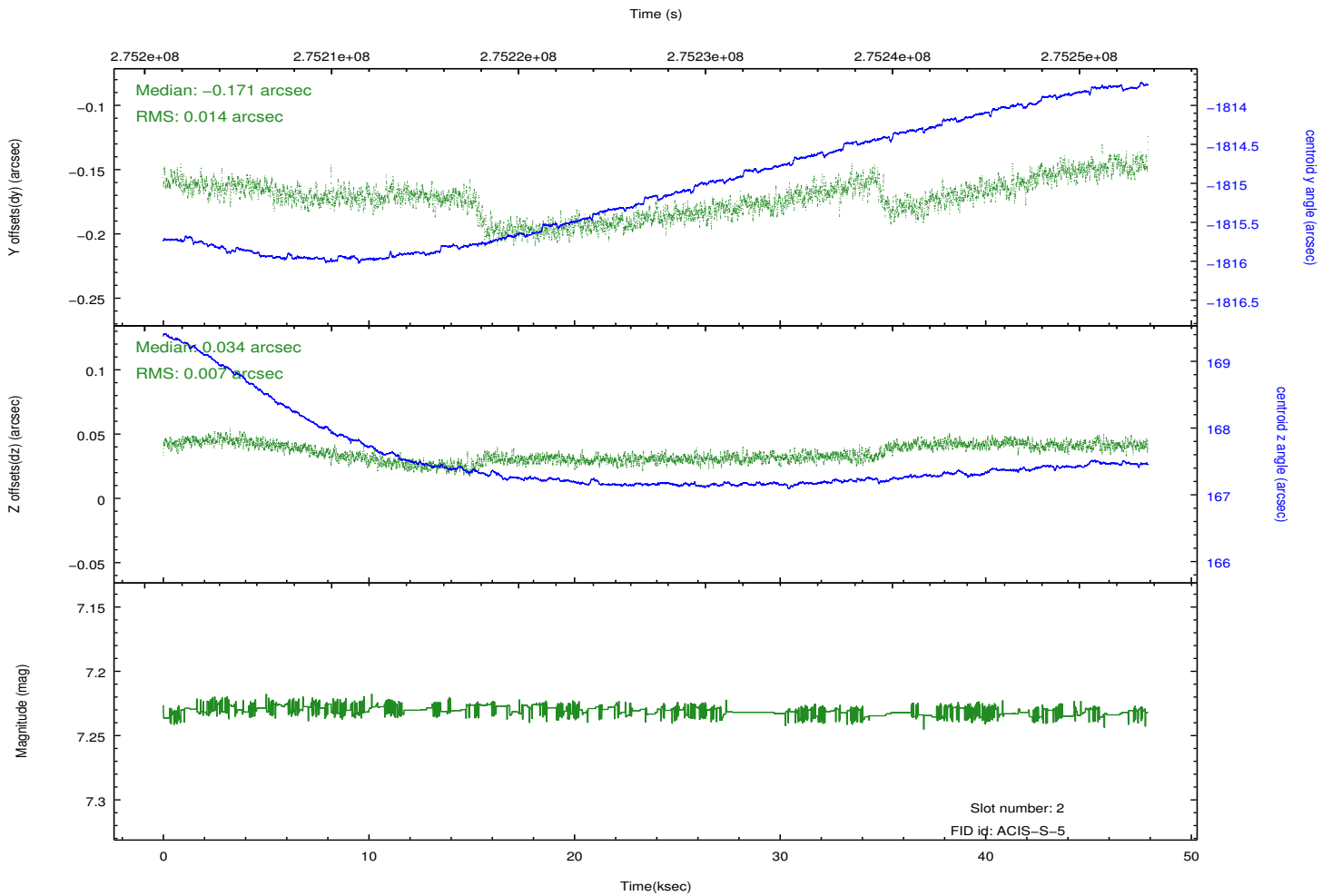
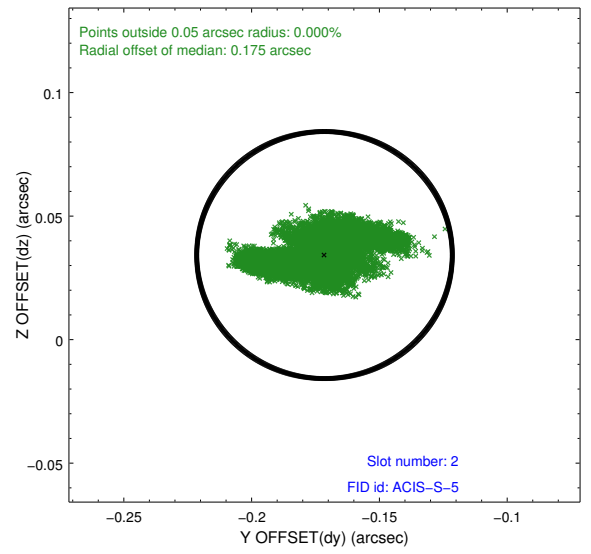
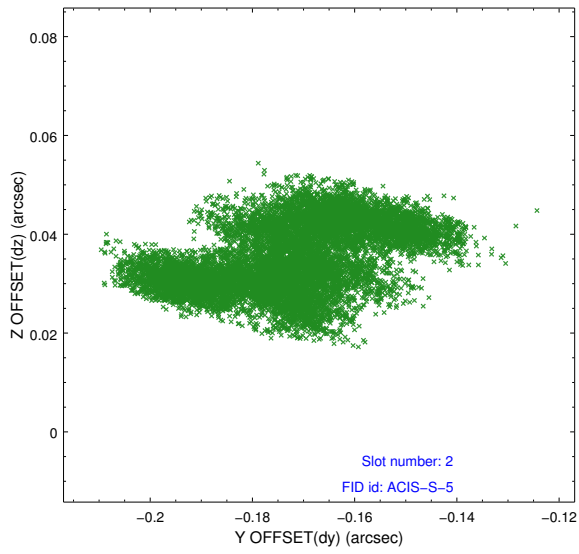
### 2.5.1 Slot 0



## 2.5.2 Slot 1



### 2.5.3 Slot 2



# A Summary

## A.1 Status

V&V Scientist	Jen Lauer
V&V Date (YYYY-MM-DD)	2012.04.10
V&V Edition	1
V&V Disposition and Status	OK
V&V Charge Time	47.8857003

## A.2 Comments