

V&V Reference Report

L2 ASCDS Version : 8.4.3.1

Observation 6976 - L2 Version 2
Chandra X-Ray Center

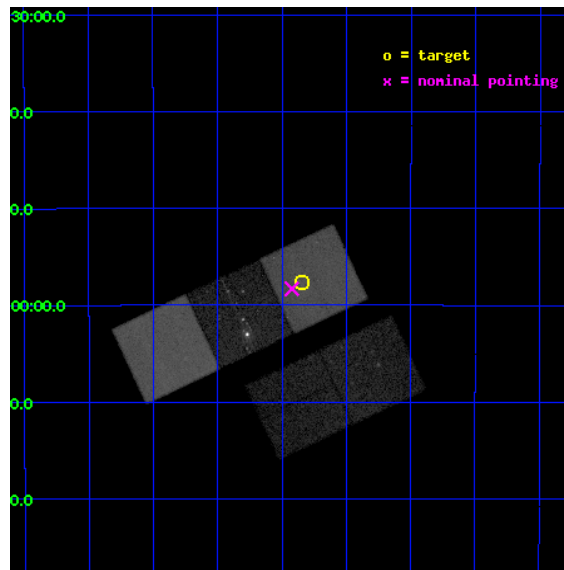
L2 Processing Date : Apr 8 2012

Contents

1	Front	2
2	OBI	3
2.1	OBI	3
2.1.1	Images	3
2.1.2	Bias	3
2.1.3	Parameters	4
2.1.4	Events	4
2.2	Compared Parameters	5
2.3	Aspect	6
2.4	Star Slots	9
2.4.1	Slot 3	9
2.4.2	Slot 4	10
2.4.3	Slot 5	11
2.4.4	Slot 6	12
2.4.5	Slot 7	13
2.5	FID Slots	14
2.5.1	Slot 0	14
2.5.2	Slot 1	15
2.5.3	Slot 2	16
A	Summary	17
A.1	Status	17
A.2	Comments	17

1 Front

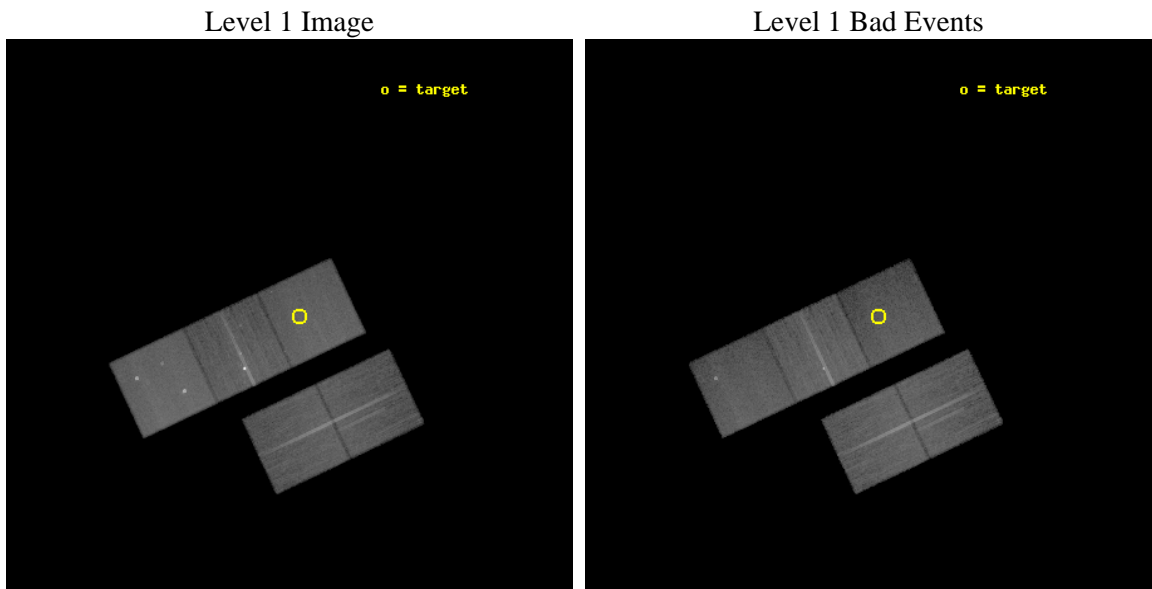
seq_num	800608	Sequence number
obs_id	6976	Observation id
title	MEASURING THE PHYSICAL PROPERTIES OF THE MOST DISTANT X-RAY MASSIVE GALAXY CLUSTER AT $z=1.4$	Proposal title
observer	Dr. Christopher Mullis	Principal investigator
object	XMMU J2235.3-2557	Source name
dtcycle	0	
cycle	P	events from which exps? Prim/Second/Both
ra_targ	338.835833	Observer's specified target RA [deg]
dec_targ	-25.961667	Observer's specified target Dec [deg]
ra_nom	338.85582676853	Nominal RA [deg]
dec_nom	-25.972044268081	Nominal Dec [deg]
roll_nom	334.78467306755	Nominal Roll [deg]
revision	2	Processing version of data
ontime	24638.800189495	Sum of GTIs [s]
livetime	24316.876126199	Livetime [s]
ontime2	24632.518208921	Sum of GTIs [s]
ontime3	24635.65917927	Sum of GTIs [s]
ontime5	24638.800189495	Sum of GTIs [s]
ontime6	24638.800189495	Sum of GTIs [s]
ontime7	24638.800189495	Sum of GTIs [s]
l2events	286226	Number of level 2 events



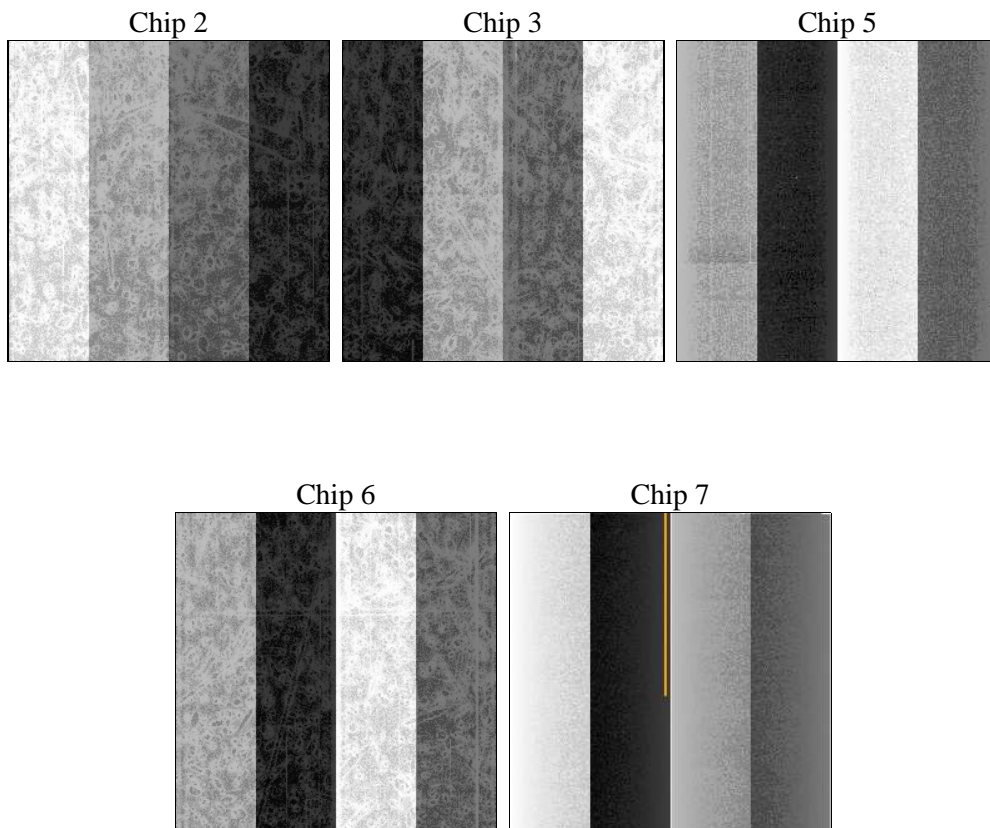
2 OBI

2.1 OBI

2.1.1 Images



2.1.2 Bias



2.1.3 Parameters

obi_num	0	Obi number	sched_exp_time	24500.000000	[s] Scheduled observation exposure time
ascdsver	8.4.3.1	Processing system revision	ontime	24638.800189495	Sum of GTIs [s]
caldbver	4.4.9	 	ontime2	24632.518208921	Sum of GTIs [s]
date	2012-04-08T19:58:29	Date and time of file creation	ontime3	24635.65917927	Sum of GTIs [s]
revision	2	Processing version of data	ontime5	24638.800189495	Sum of GTIs [s]
			ontime6	24638.800189495	Sum of GTIs [s]
			ontime7	24638.800189495	Sum of GTIs [s]
			l1events	1085159	Number of level 1 events

2.1.4 Events

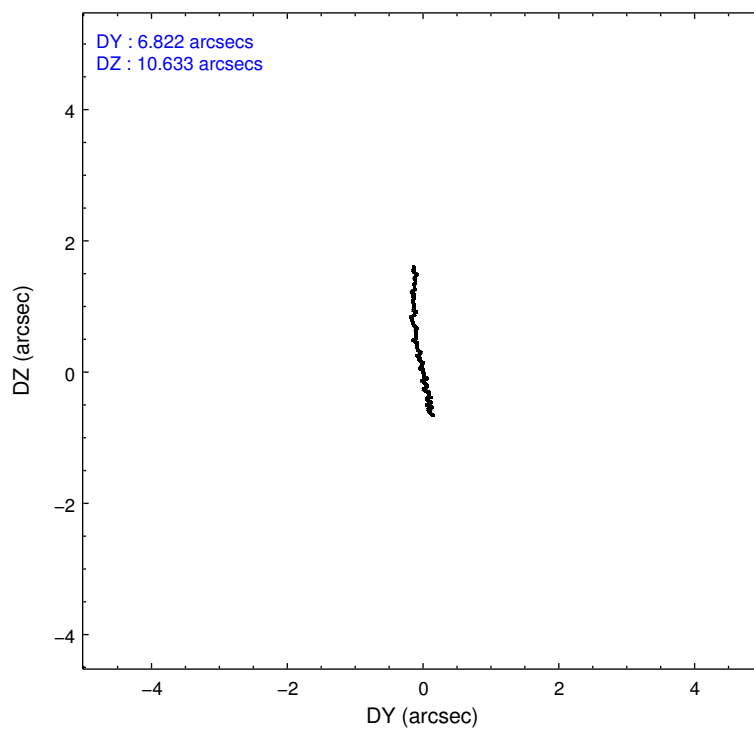
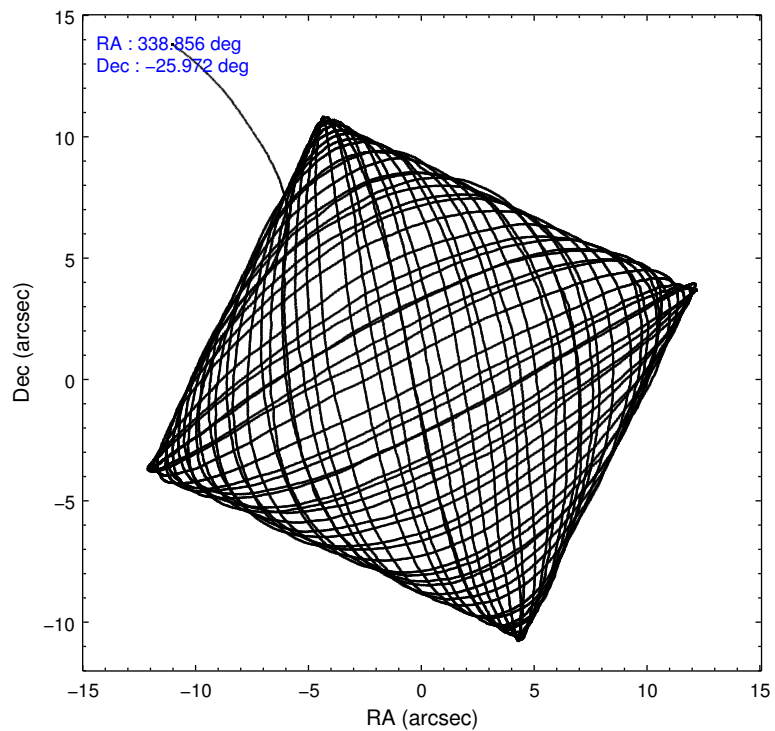
	ccd 2	ccd 3	ccd 5	ccd 6	ccd 7
level 1 events	197937	182425	265315	229305	210177
rejected events	180287	165167	136006	178127	116219
rejected %	91%	90%	51%	77%	55%

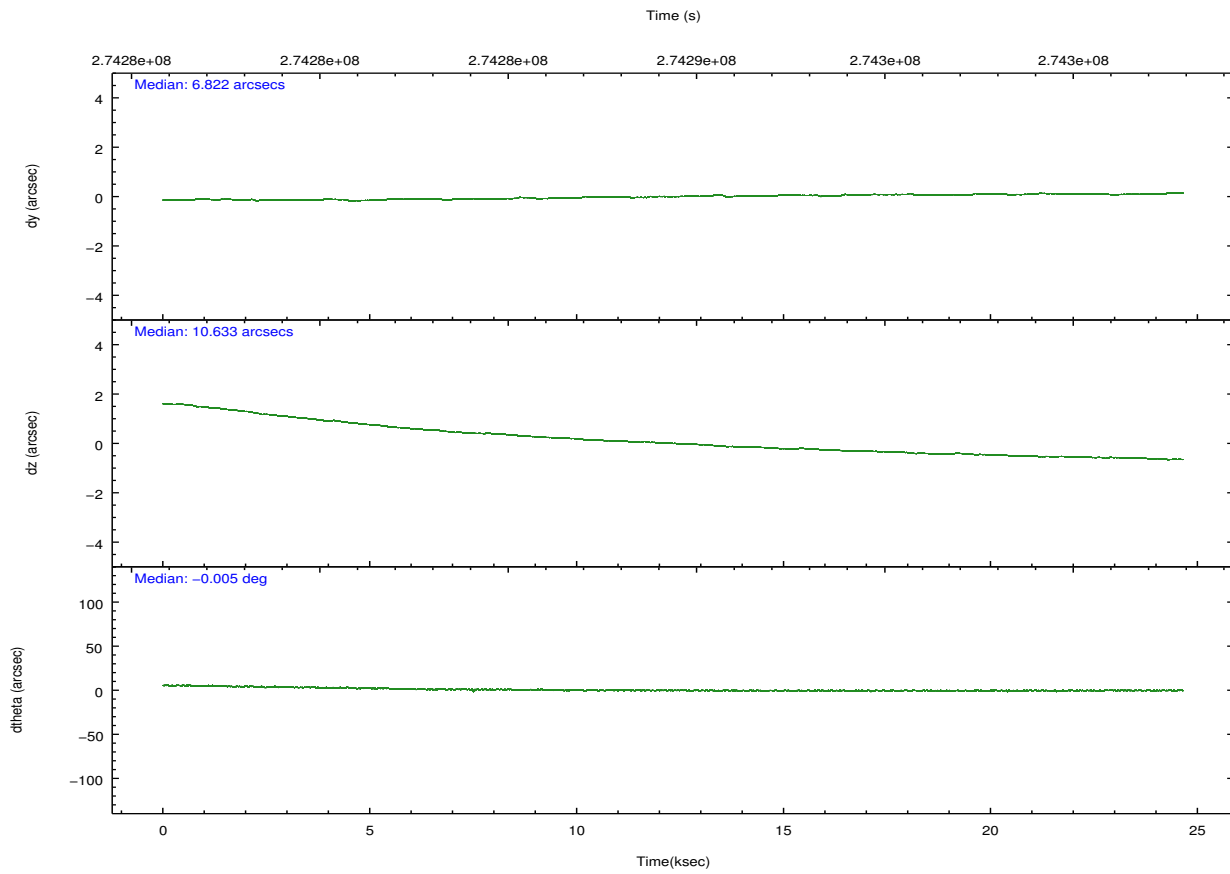
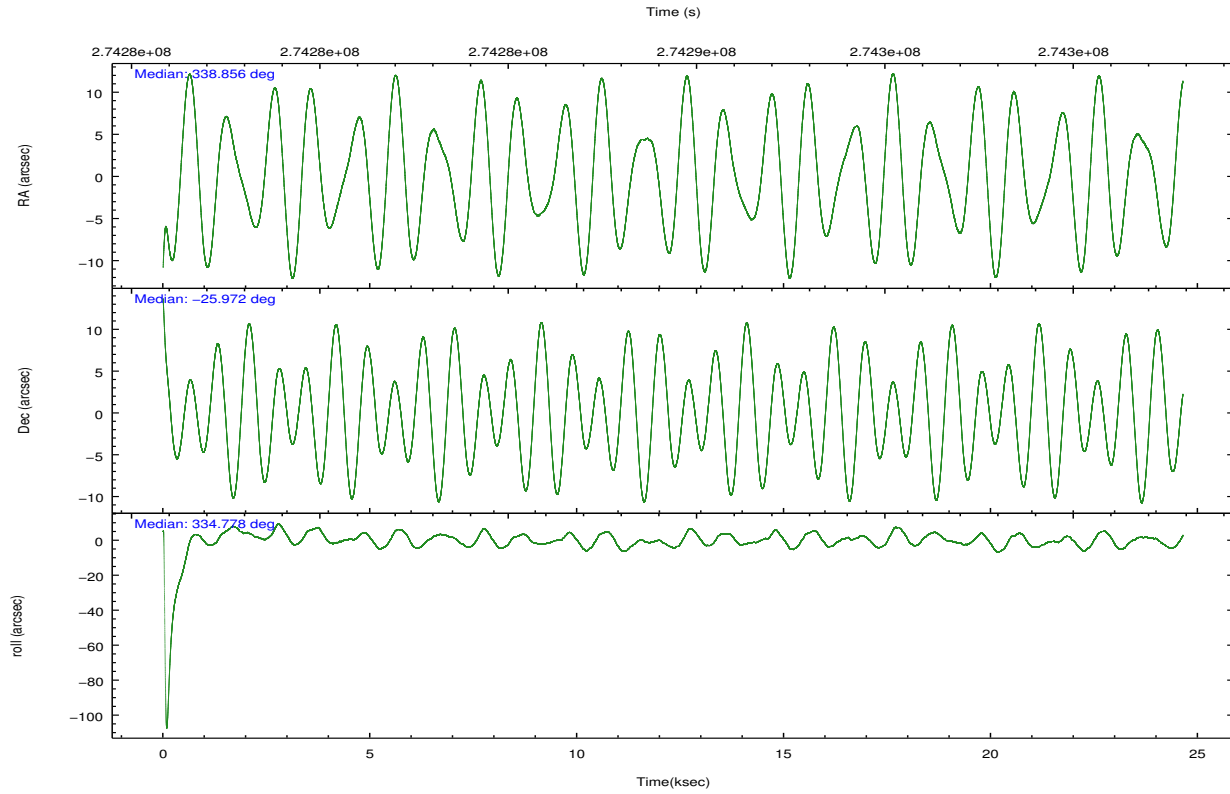
	ccd 2	ccd 3	ccd 5	ccd 6	ccd 7
grade 0 events	6492	6211	14734	31263	8635
	3%	3%	5%	13%	4%
grade 1 events	101	113	318	986	216
	0%	0%	0%	0%	0%
grade 2 events	4329	3784	39668	8272	19247
	2%	2%	14%	3%	9%
grade 3 events	2016	2098	5497	3417	9229
	1%	1%	2%	1%	4%
grade 4 events	1973	1985	5363	3370	9028
	0%	1%	2%	1%	4%
grade 5 events	5955	7315	21590	8099	22480
	3%	4%	8%	3%	10%
grade 6 events	3221	3523	67012	5537	49822
	1%	1%	25%	2%	23%
grade 7 events	173850	157396	111133	168361	91520
	87%	86%	41%	73%	43%

2.2 Compared Parameters

Parameter	Planned	Actual	Parameter	Planned	Actual
Instrument	ACIS	ACIS	Obspar format version number	7	7
Detector	ACIS-23567	ACIS-23567	Obspar file type	PREDICTED	ACTUAL
Grating	NONE	NONE	Obspar update status	NONE	UPDATED
Data mode	VFAINT	VFAINT	Number of optional ACIS chips dropped	0	0
Observation mode	POINTING	POINTING	On-chip summing requested	N	N
[deg] Pointing RA	338.825685	338.8558267685287	Subarray requested	NONE	NONE
[deg] Pointing Dec	-25.974684	-25.97204426808078	Alternating exposures requested	N	N
[deg] Pointing Roll	334.614775	334.784673067549	[s] Primary exposure time	0.000000	3.1
[mm] SIM focus pos	-0.684267	-0.6828225247311905			
[mm] SIM defocus	0	0.001444936568705701			
[mm] SIM translation stage pos	-190.132523	-190.1425803651734			
[mm] SIM translation stage offset	0	0.01005778216563158			
[s] Observation start time (MET)	274277207.184000	274275961.84631			
Observation start date	2006-09-10T12:05:42	2006-09-10T11:46:01			
[s] Observation end time (MET)	274301707.184000	274302143.42254			
Observation end date	2006-09-10T18:54:02	2006-09-10T19:02:23			
Read mode	TIMED	TIMED			

2.3 Aspect



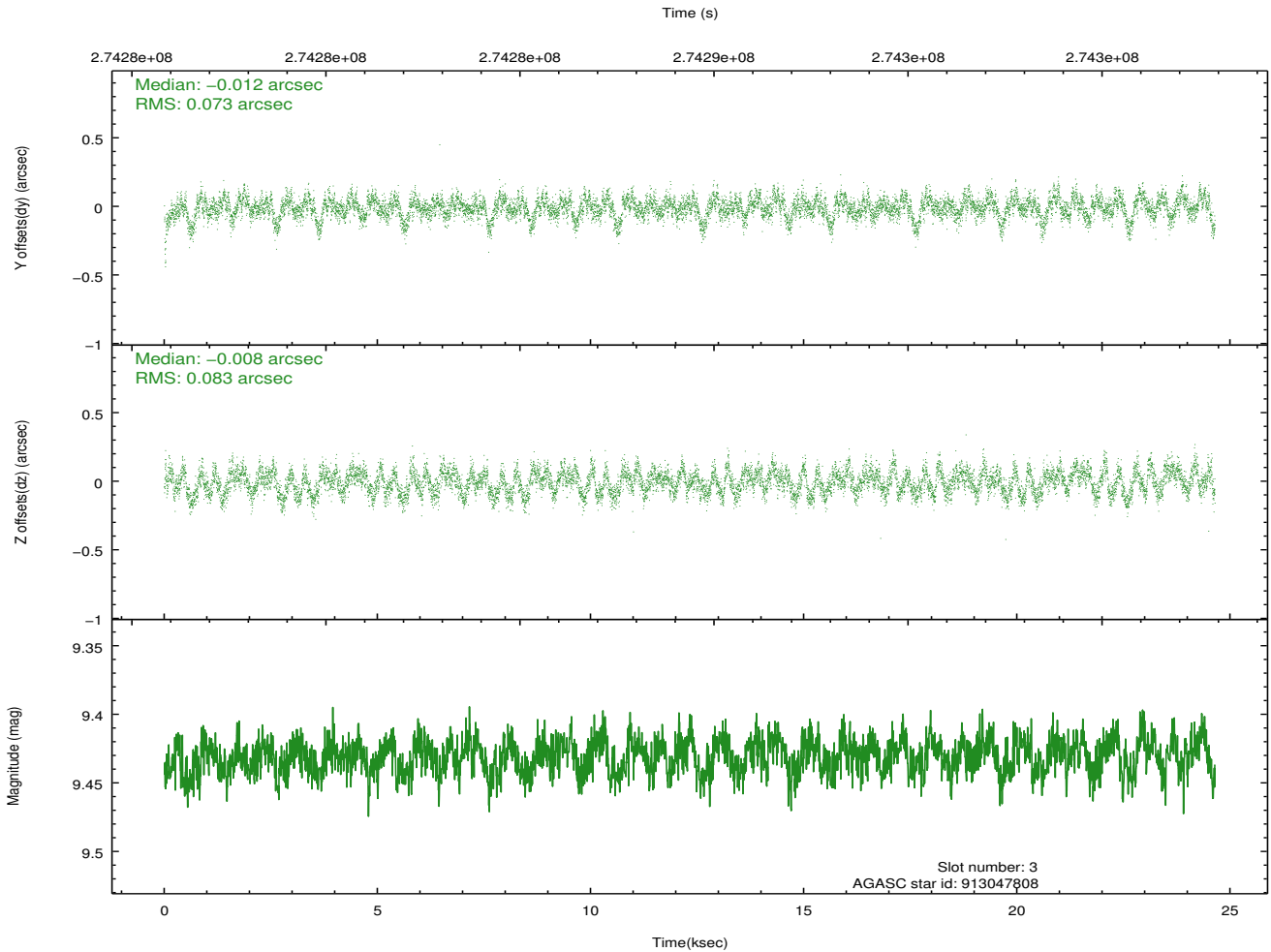
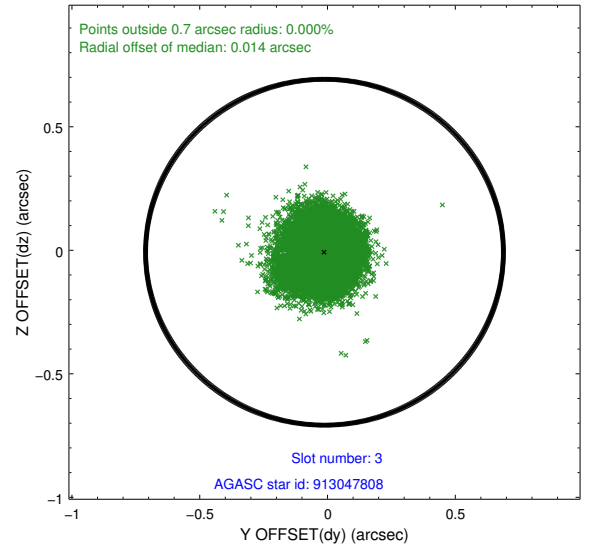
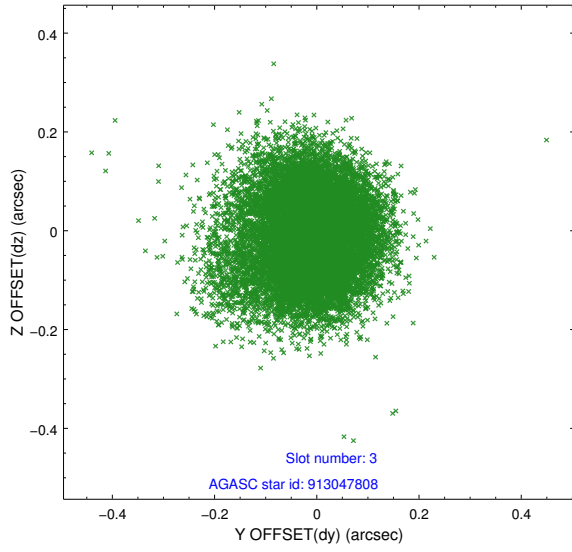


Slot Statistics

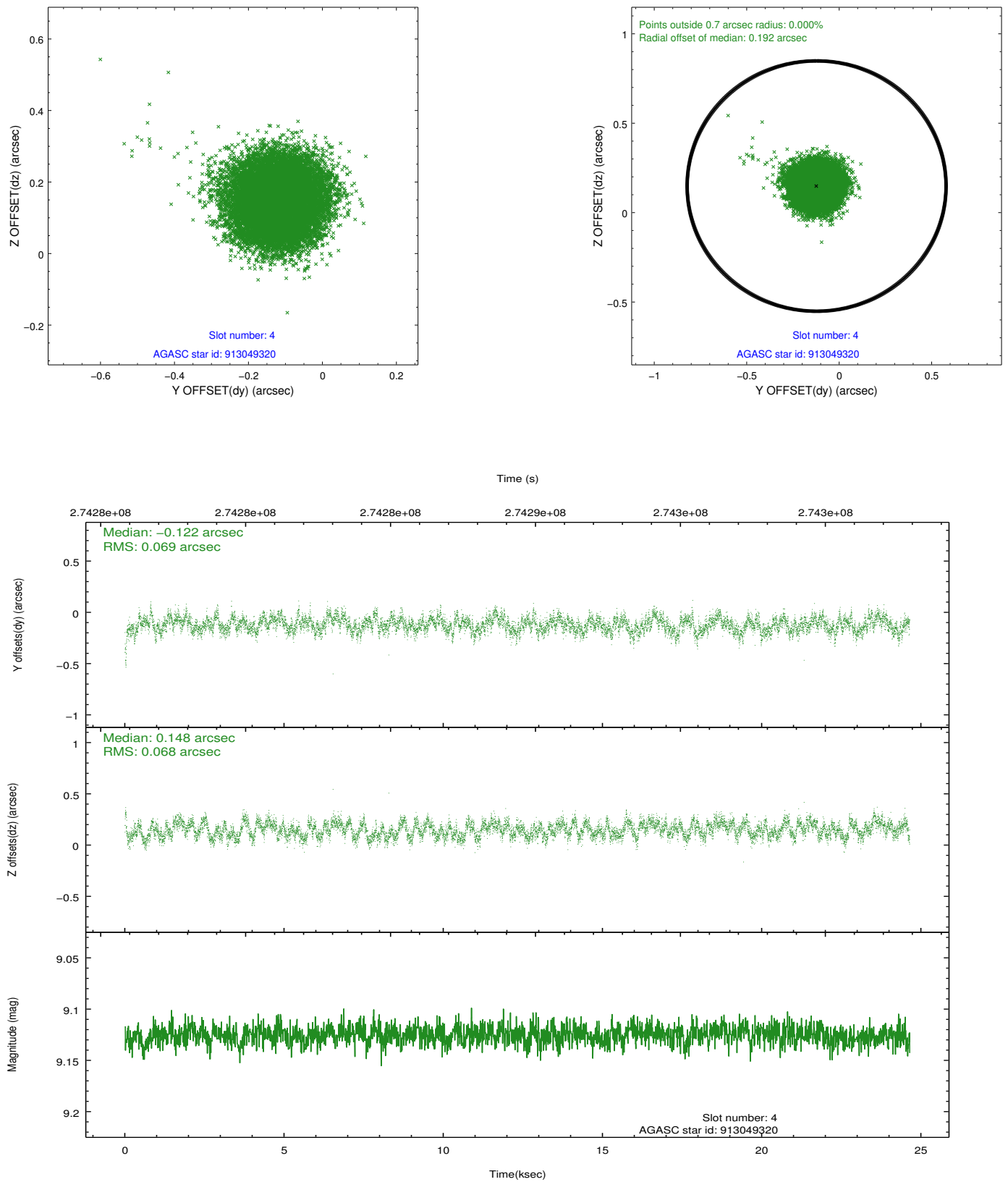
slot	status	id	mag	n_pts	med_dy	med_dz	dr1	dr2	ra	dec	mean_y	mean_z
0	FID	ACIS-S-2	7.10	6010	-0.063	-0.033	0.012	0.025	0.000000	0.000000	-759.58	-1732.05
1	FID	ACIS-S-4	7.22	6010	0.113	0.039	0.012	0.023	0.000000	0.000000	2153.77	176.43
2	FID	ACIS-S-5	7.24	6011	-0.082	0.003	0.010	0.017	0.000000	0.000000	-1812.32	170.14
3	GUIDE	913047808	9.43	12008	-0.012	-0.008	0.118	0.188	338.934868	-25.449672	-489.41	1859.68
4	GUIDE	913049320	9.13	12017	-0.122	0.148	0.104	0.158	338.191374	-25.848811	-2048.22	-475.96
5	GUIDE	913049392	10.34	12001	-0.130	-0.143	0.181	0.310	338.305127	-26.229898	-1123.16	-1553.92
6	GUIDE	913050576	9.76	11935	-0.085	-0.121	0.121	0.193	339.398805	-25.857774	1498.81	1172.79
7	GUIDE	913055744	9.71	12010	0.358	0.127	0.108	0.176	339.034663	-26.334108	1165.08	-879.90

2.4 Star Slots

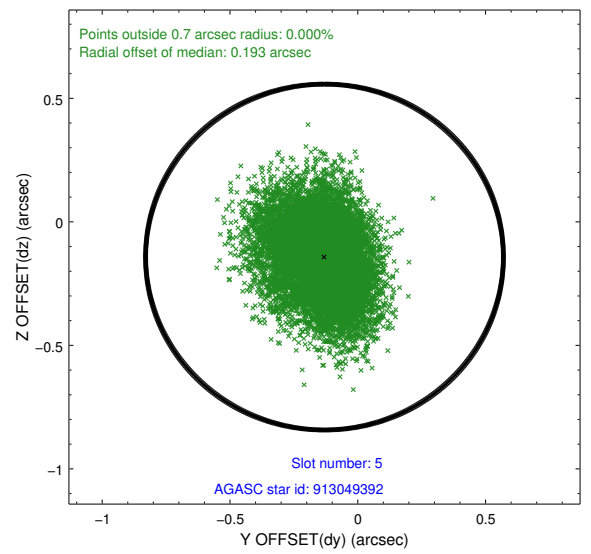
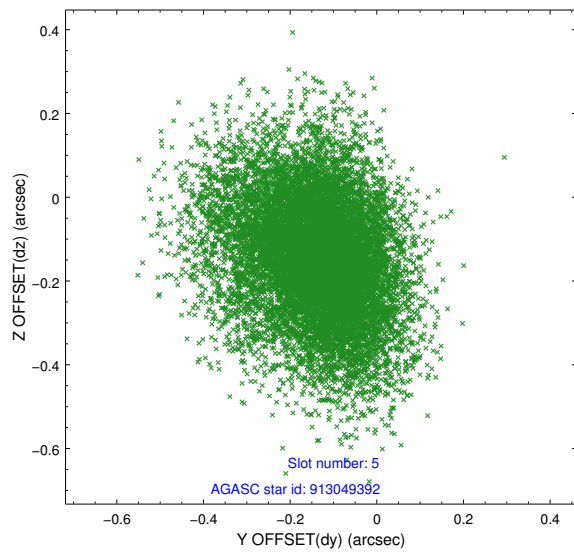
2.4.1 Slot 3



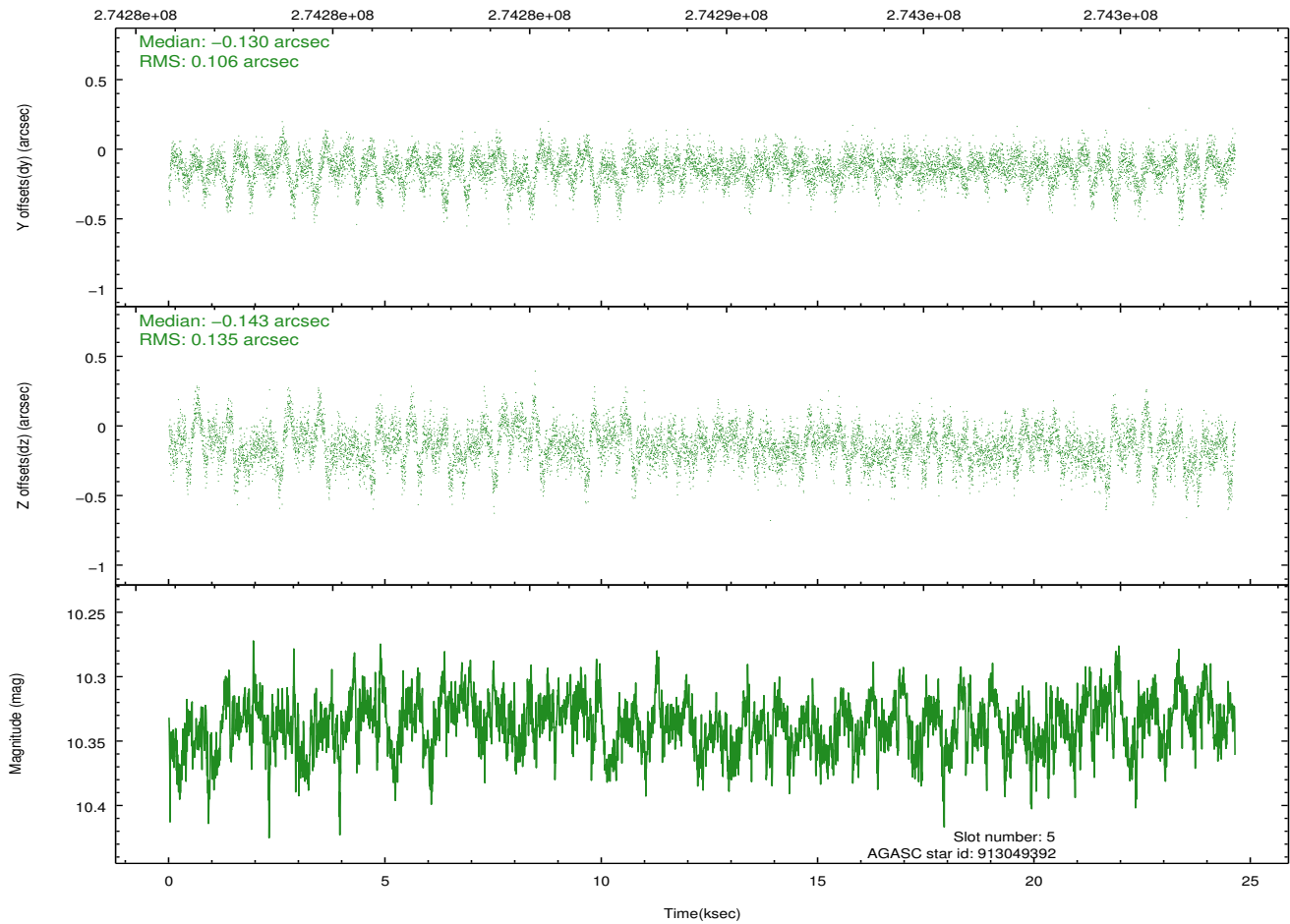
2.4.2 Slot 4



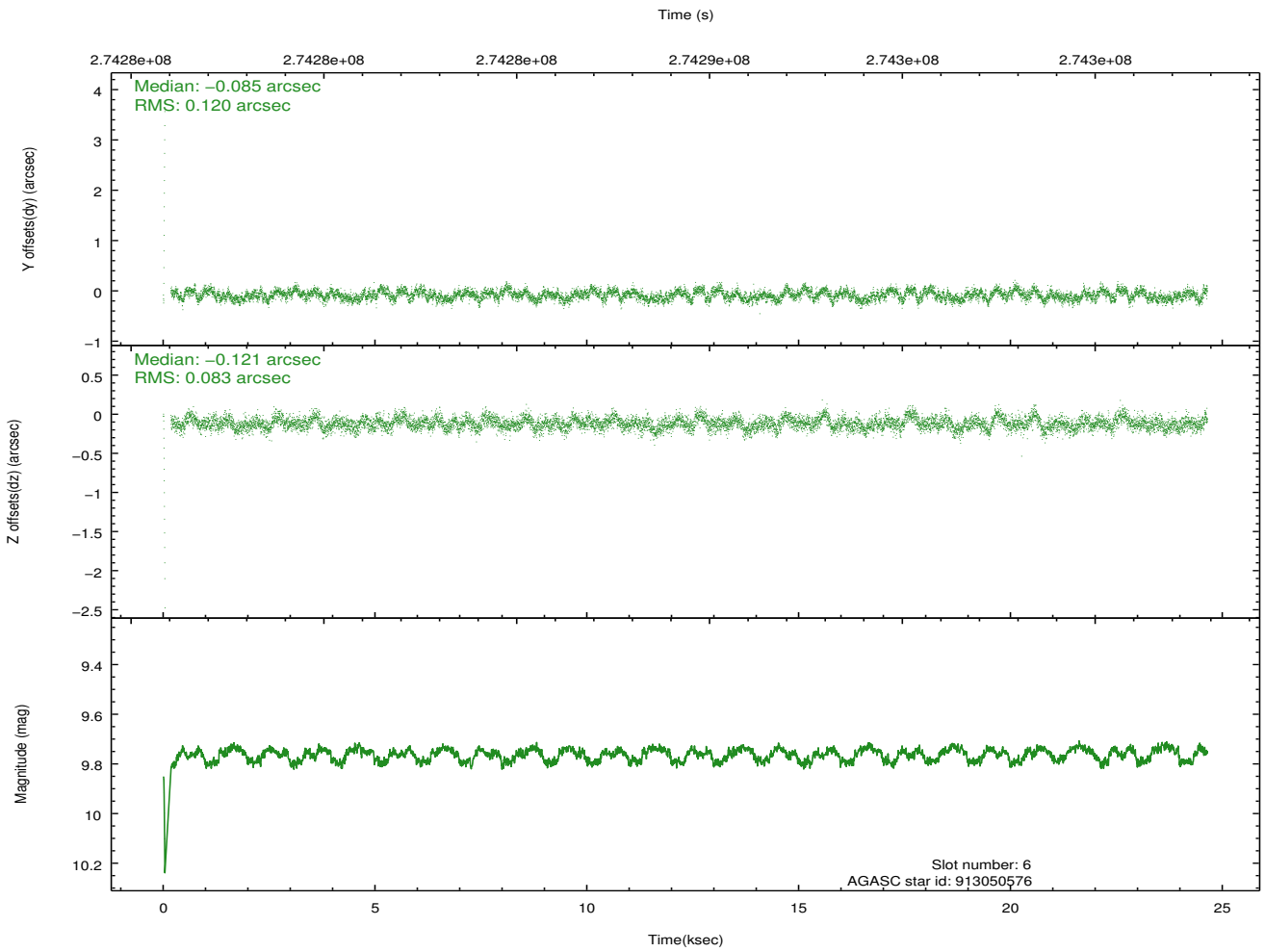
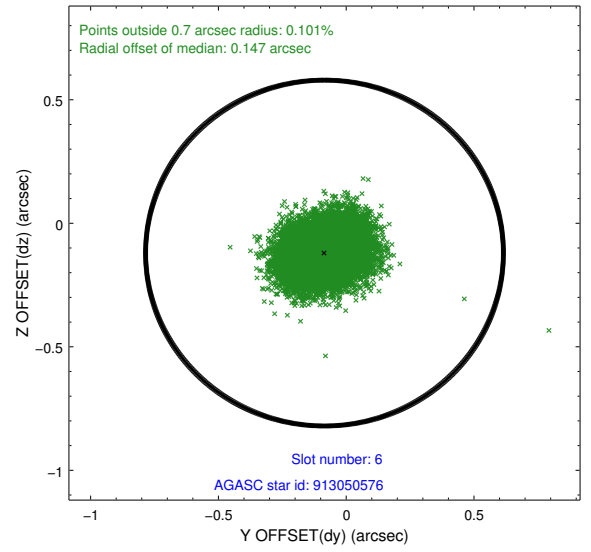
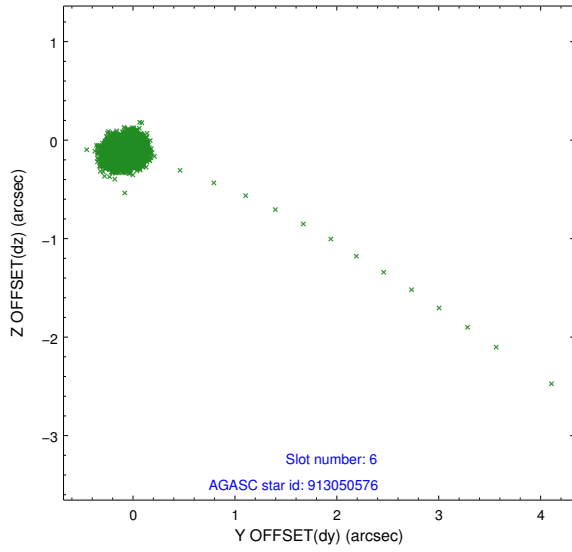
2.4.3 Slot 5



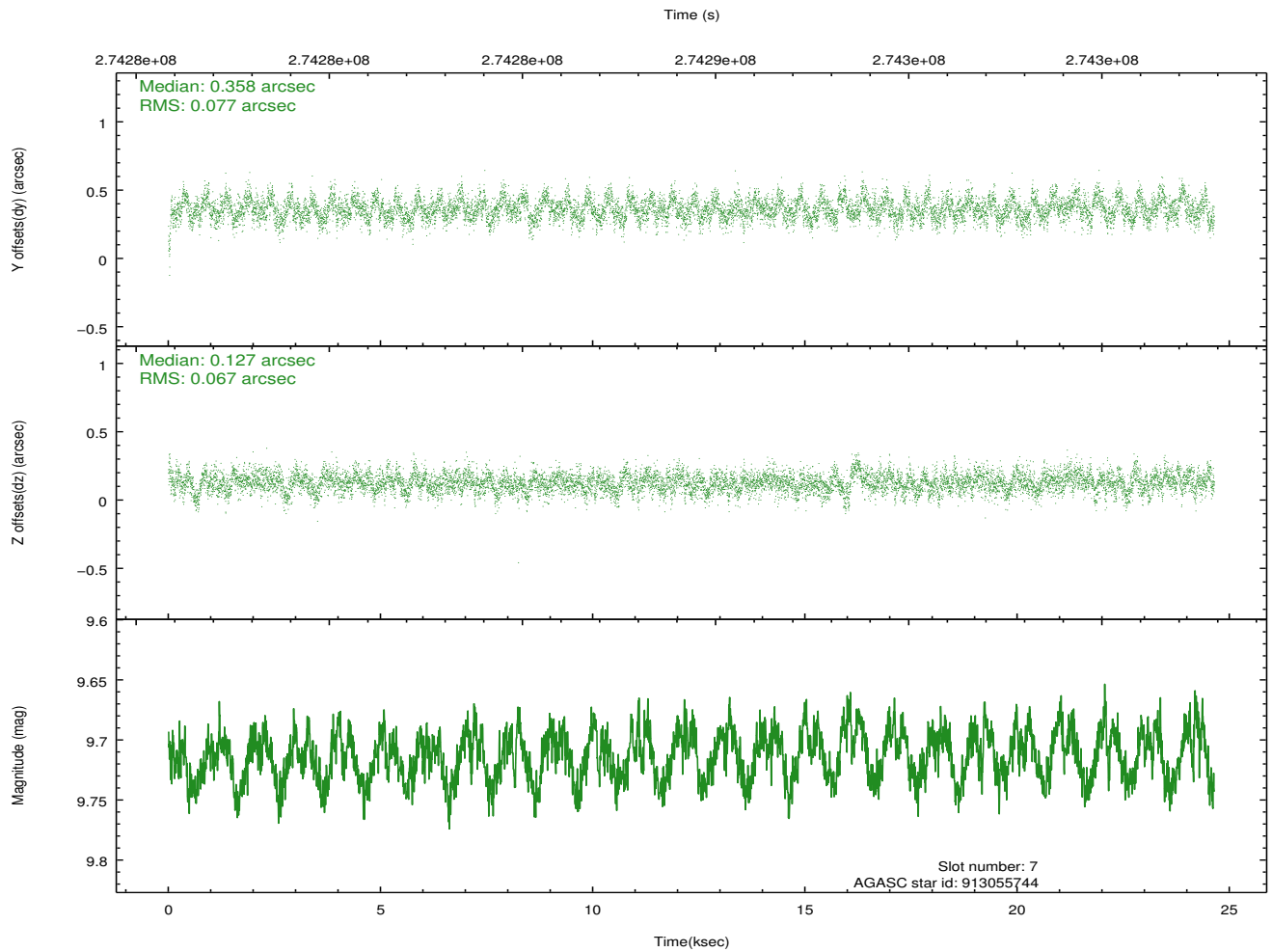
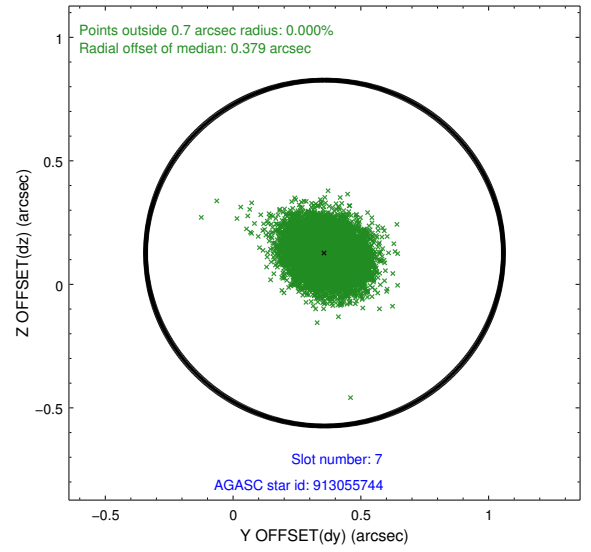
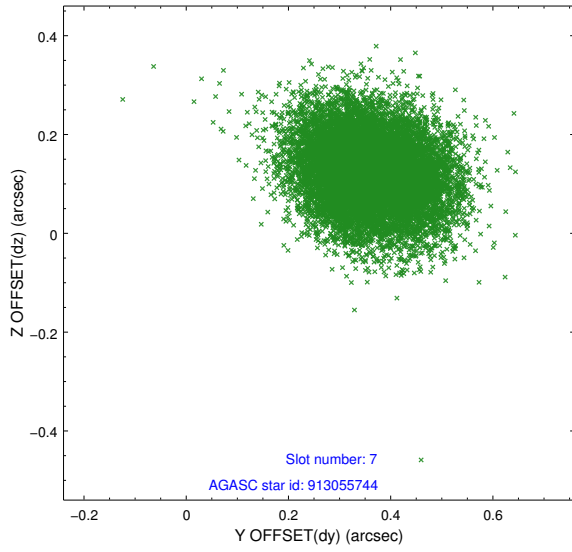
Time (s)



2.4.4 Slot 6

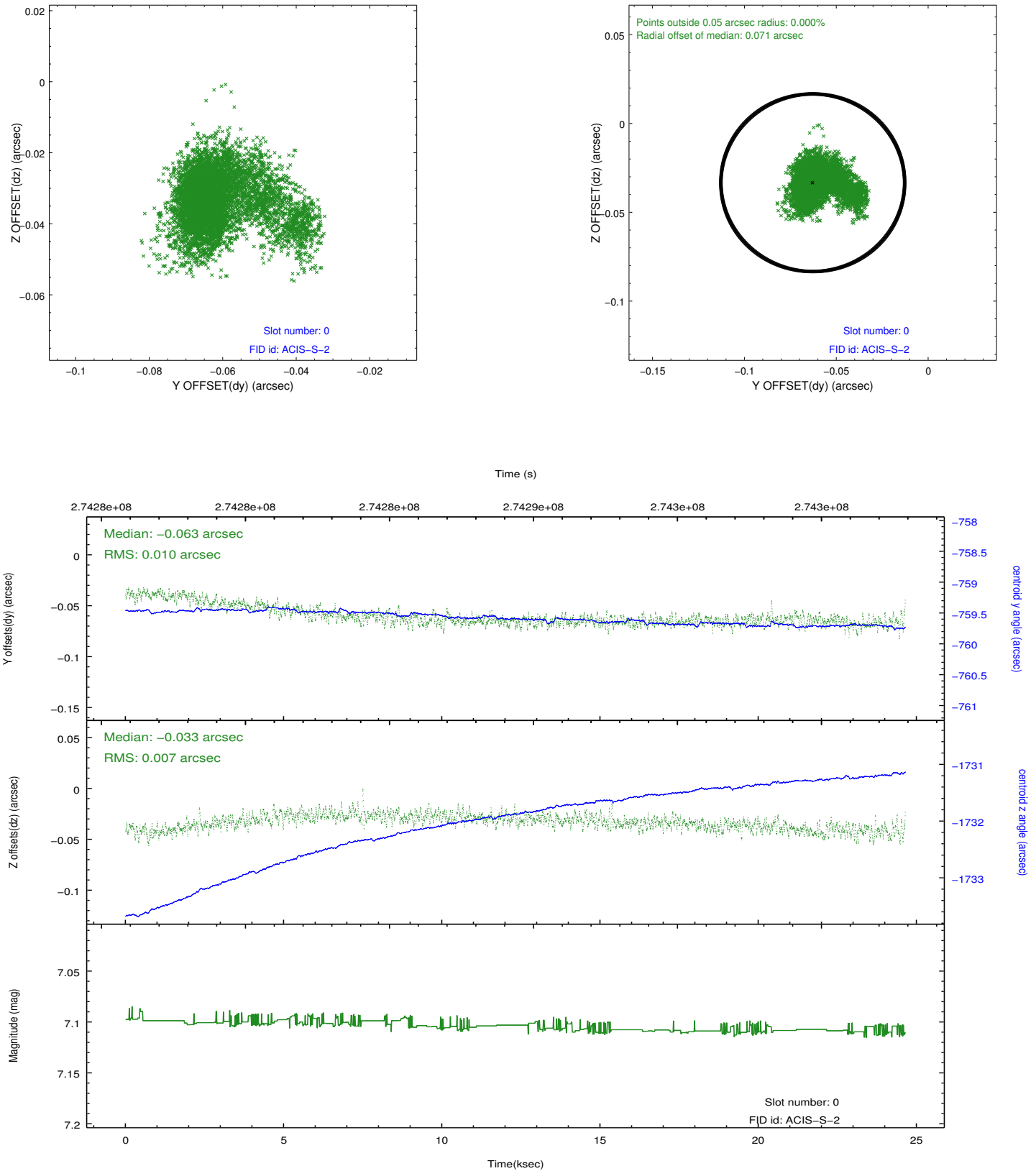


2.4.5 Slot 7

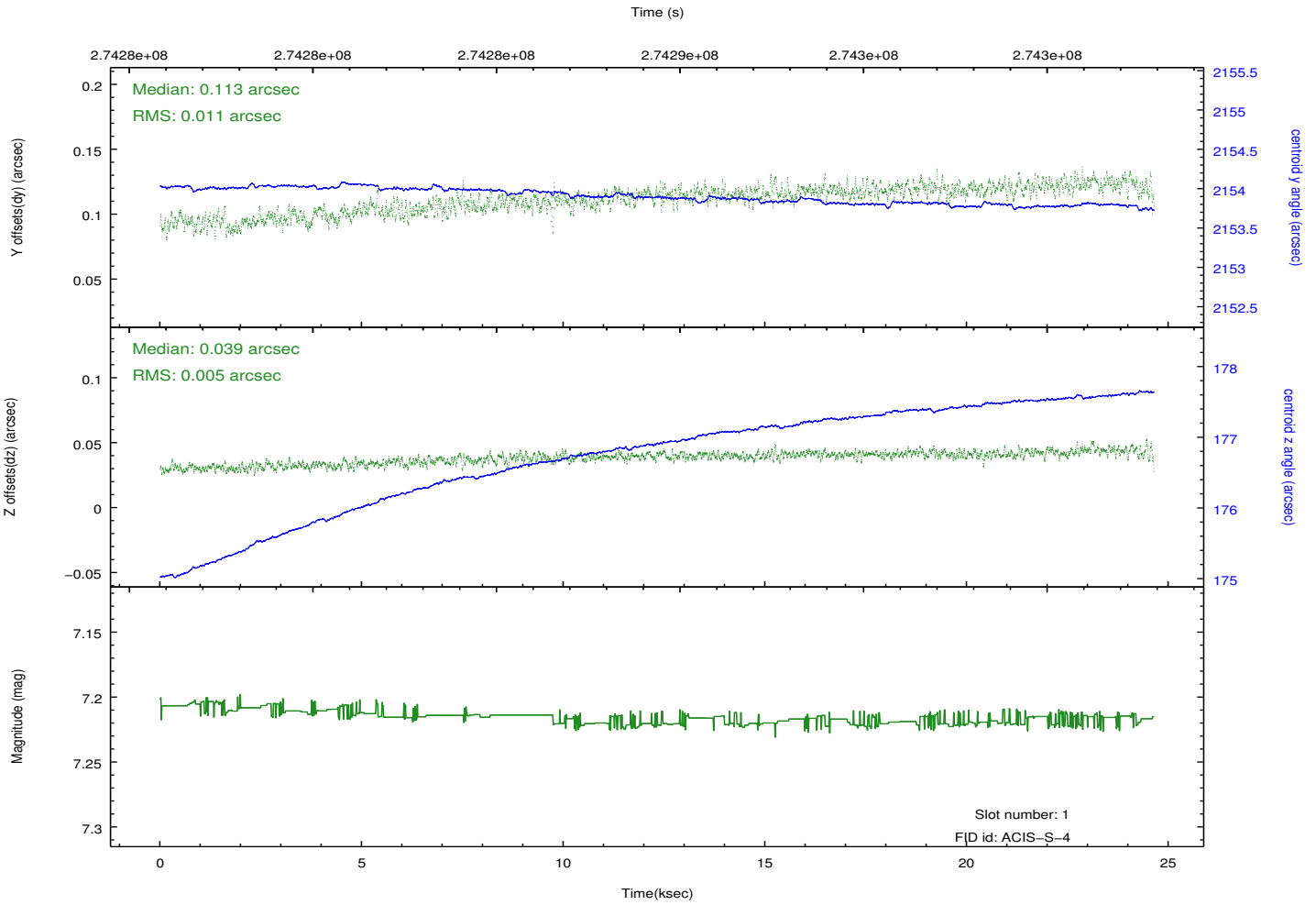
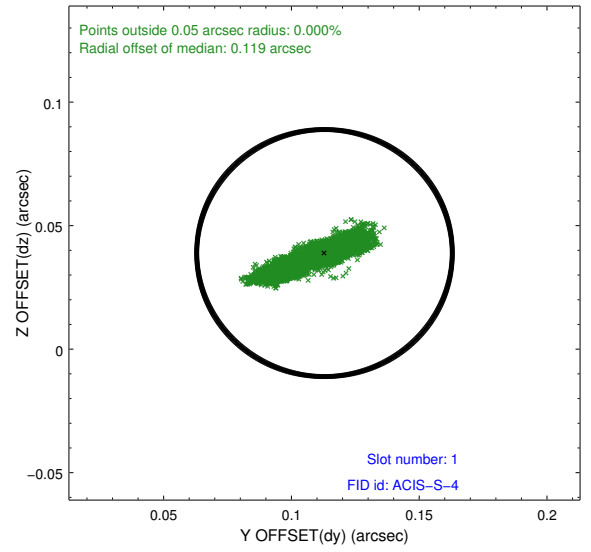
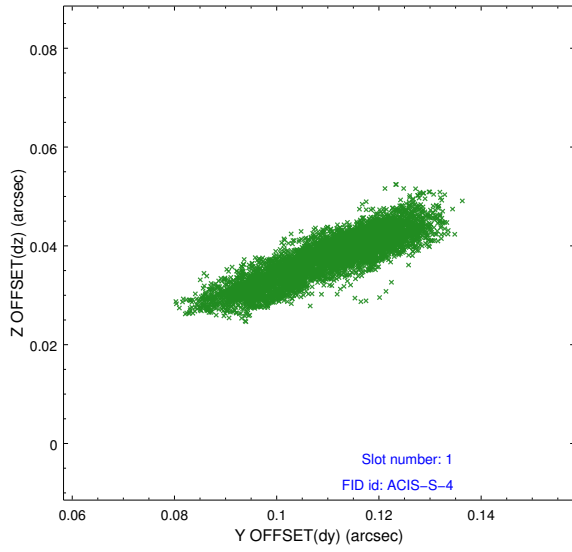


2.5 FID Slots

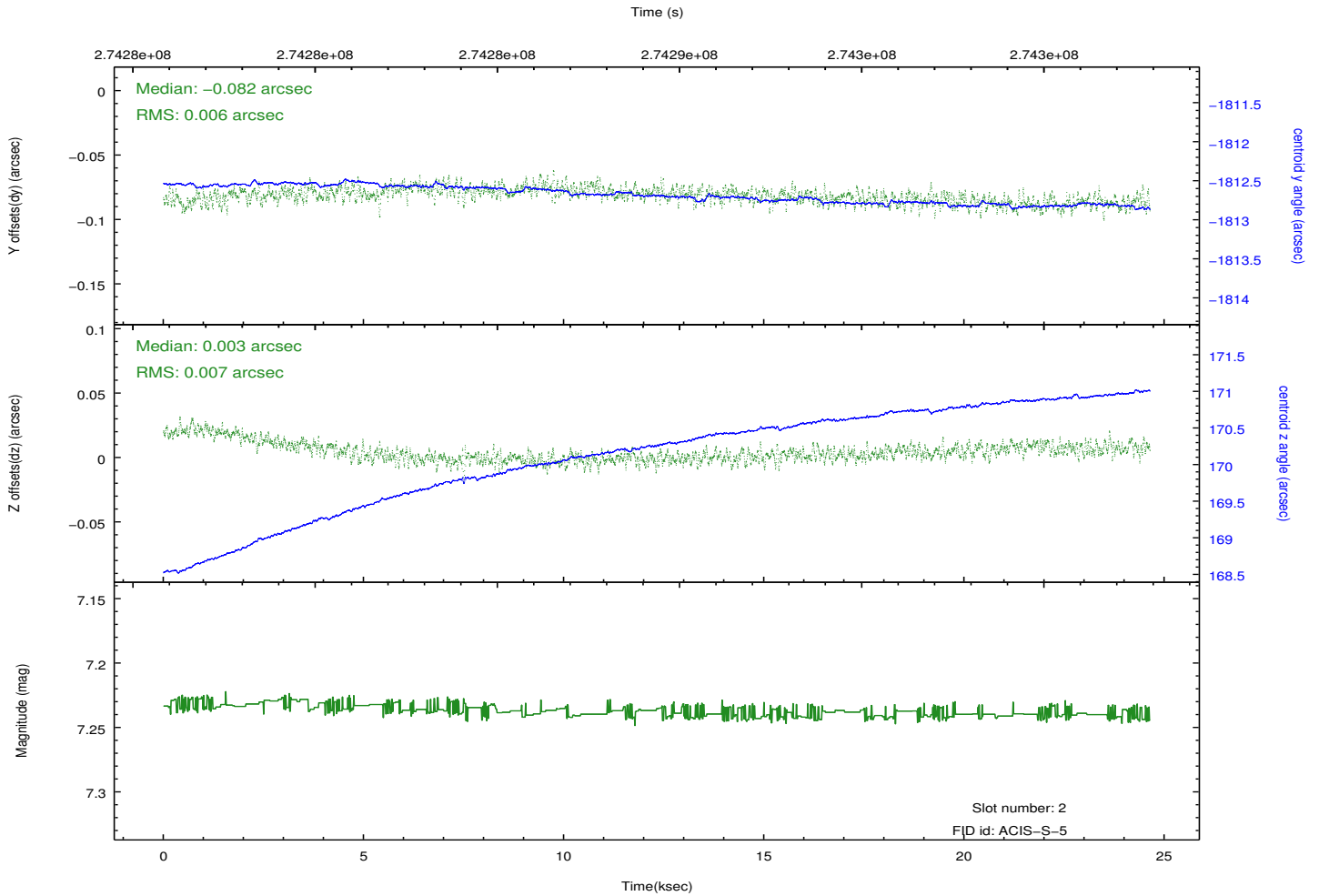
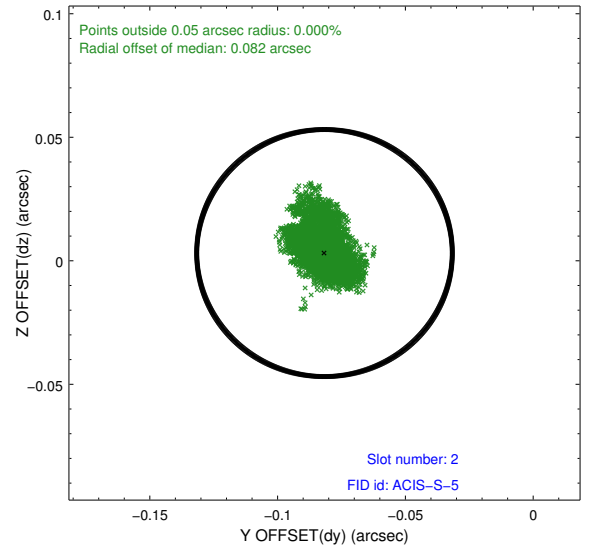
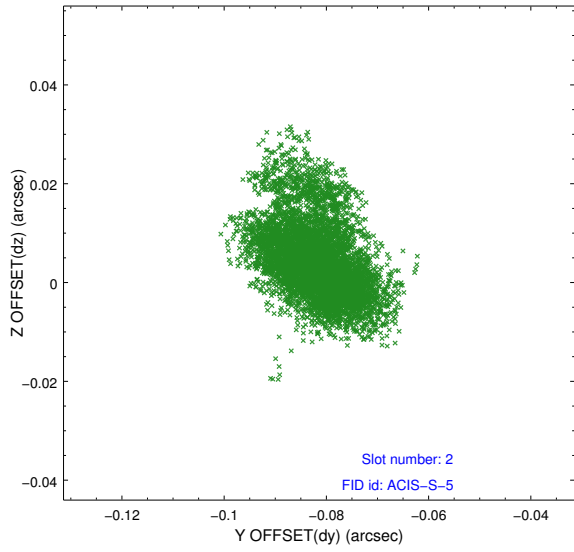
2.5.1 Slot 0



2.5.2 Slot 1



2.5.3 Slot 2



A Summary

A.1 Status

V&V Scientist	Beth Sundheim
V&V Date (YYYY-MM-DD)	2012.04.09
V&V Edition	1
V&V Disposition and Status	OK
V&V Charge Time	24.6388001

A.2 Comments

Joint proposal with XMM.