

V&V Reference Report

L2 ASCDS Version : 8.4.4

Observation 7046 - L2 Version 2
Chandra X-Ray Center

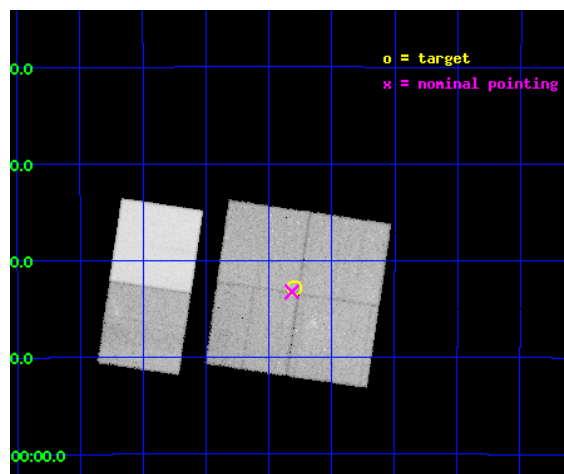
L2 Processing Date : Apr 28 2012

Contents

1	Front	2
2	OBI	3
2.1	OBI	3
2.1.1	Images	3
2.1.2	Bias	3
2.1.3	Parameters	4
2.1.4	Events	4
2.2	Compared Parameters	5
2.3	Aspect	6
2.4	Star Slots	9
2.4.1	Slot 3	9
2.4.2	Slot 4	10
2.4.3	Slot 5	11
2.4.4	Slot 6	12
2.4.5	Slot 7	13
2.5	FID Slots	14
2.5.1	Slot 0	14
2.5.2	Slot 1	15
2.5.3	Slot 2	16
A	Summary	17
A.1	Status	17
A.2	Comments	17

1 Front

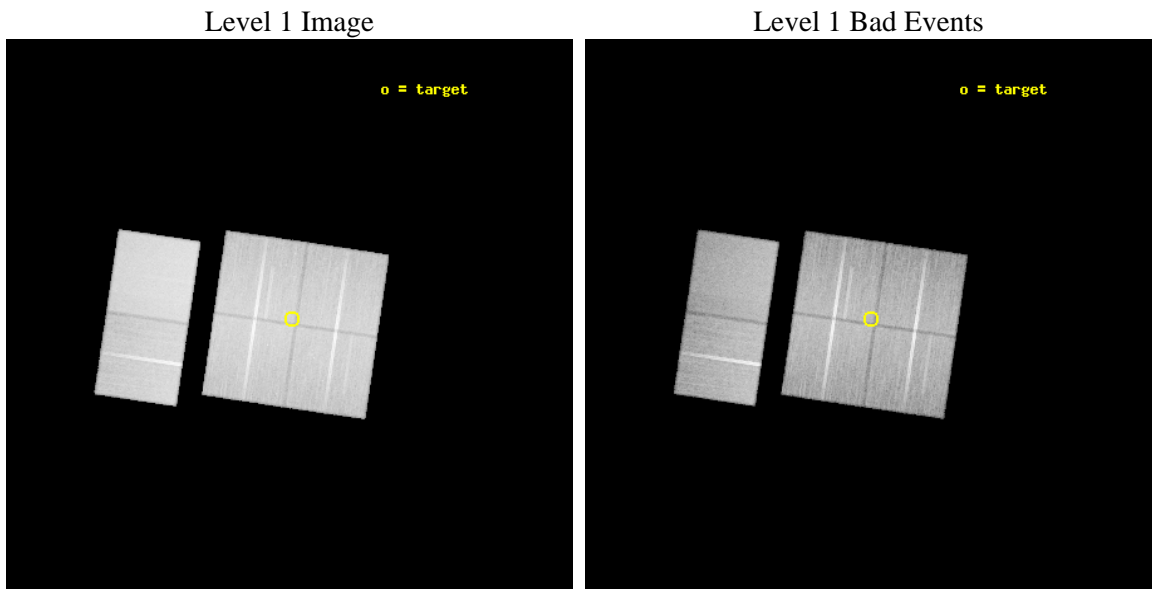
seq_num	900462	Sequence number
obs_id	7046	Observation id
title	A Legacy Study of Stellar Life Cycles at the Galactic Center	Propo
observer	Dr. Michael Muno	Principal investigator
object	Deep GCS 25	Source name
dtcycle	0	
cycle	P	events from which exps? Prim/Second/Both
ra_targ	266.825417	Observer's specified target RA [deg]
dec_targ	-28.713306	Observer's specified target Dec [deg]
ra_nom	266.82943369959	Nominal RA [deg]
dec_nom	-28.720587622467	Nominal Dec [deg]
roll_nom	278.43965136609	Nominal Roll [deg]
revision	2	Processing version of data
ontime	36943.958872139	Sum of GTIs [s]
livetime	36476.152219919	Livetime [s]
ontime0	36943.958862126	Sum of GTIs [s]
ontime1	36943.958872139	Sum of GTIs [s]
ontime2	36943.958881974	Sum of GTIs [s]
ontime3	36943.958872139	Sum of GTIs [s]
ontime6	36943.958881974	Sum of GTIs [s]
ontime7	36943.958872139	Sum of GTIs [s]
l2events	431280	Number of level 2 events



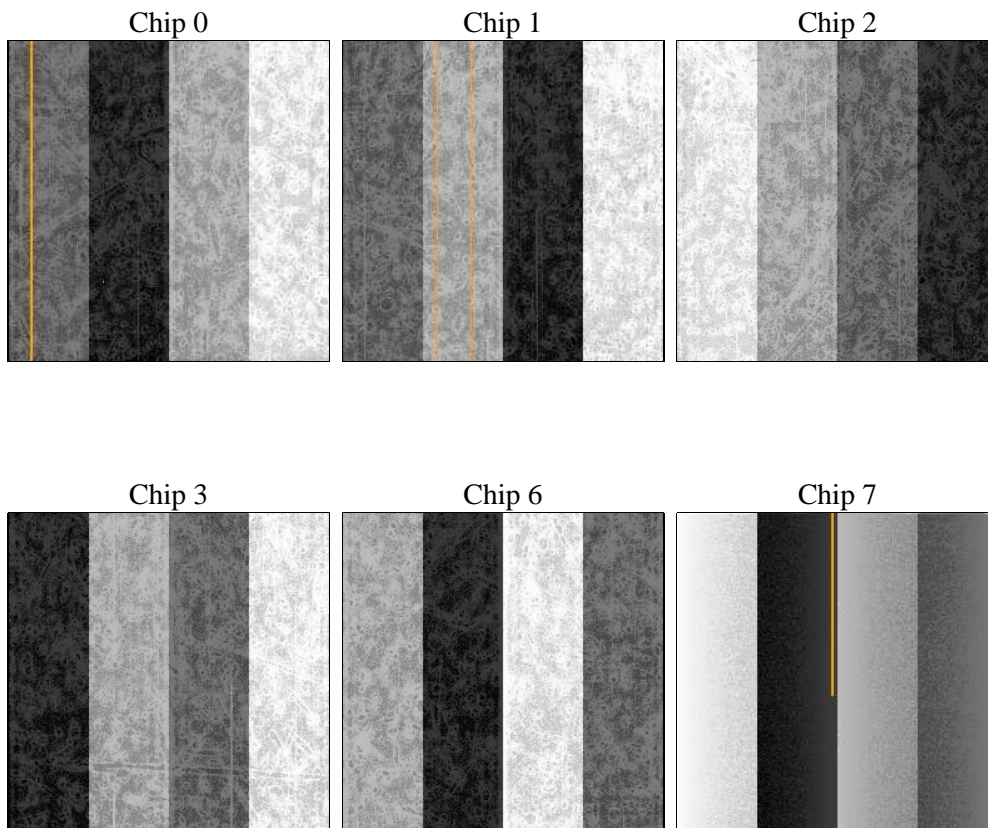
2 OBI

2.1 OBI

2.1.1 Images



2.1.2 Bias



2.1.3 Parameters

obi_num	0	Obi number	sched_exp_time	37000.000000	[s] Scheduled observation exposure time
ascdsver	8.4.4	Processing system revision	ontime	36943.958872139	Sum of GTIs [s]
caldsver	4.4.9	 	ontime0	36943.958862126	Sum of GTIs [s]
date	2012-04-28T03:06:52	Date and time of file creation	ontime1	36943.958872139	Sum of GTIs [s]
revision	2	Processing version of data	ontime2	36943.958881974	Sum of GTIs [s]
			ontime3	36943.958872139	Sum of GTIs [s]
			ontime6	36943.958881974	Sum of GTIs [s]
			ontime7	36943.958872139	Sum of GTIs [s]
			l1events	2303173	Number of level 1 events

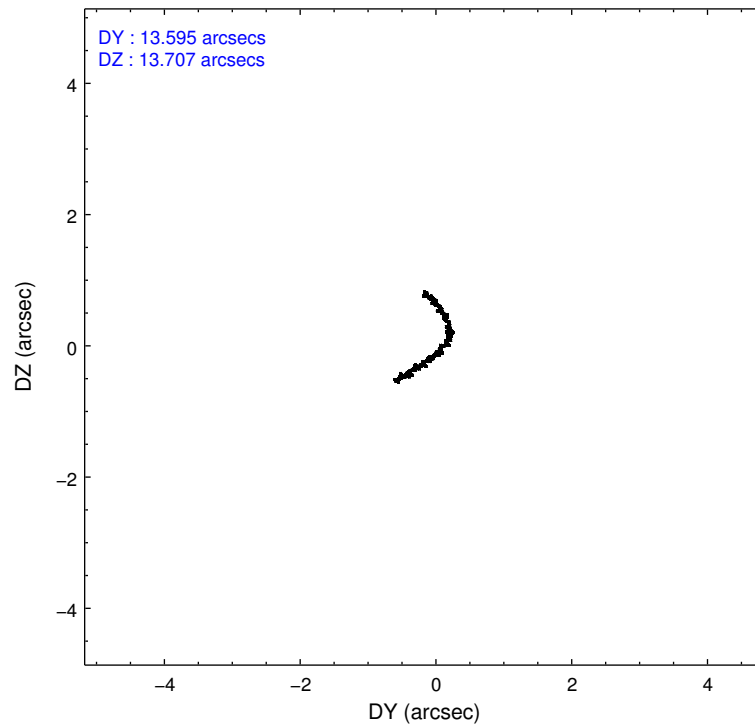
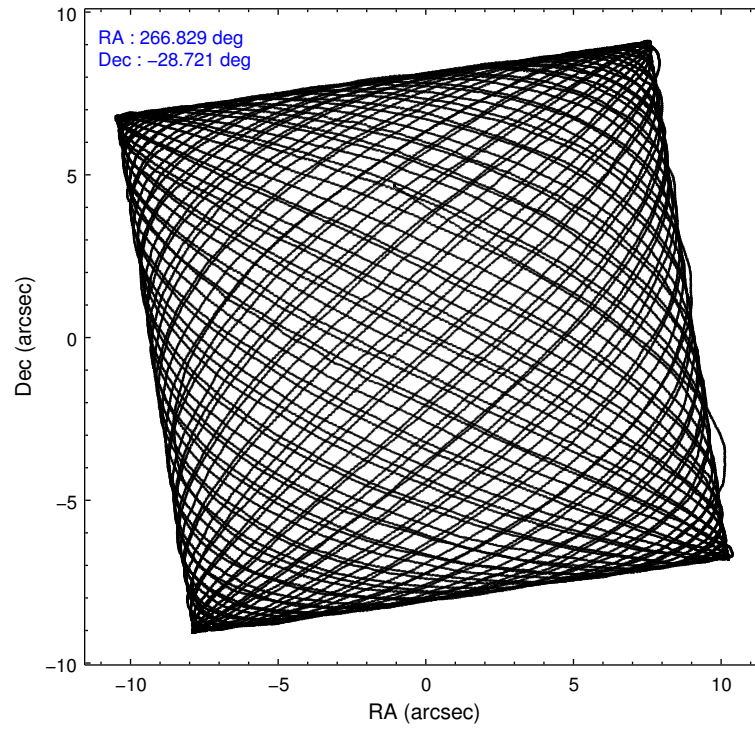
2.1.4 Events

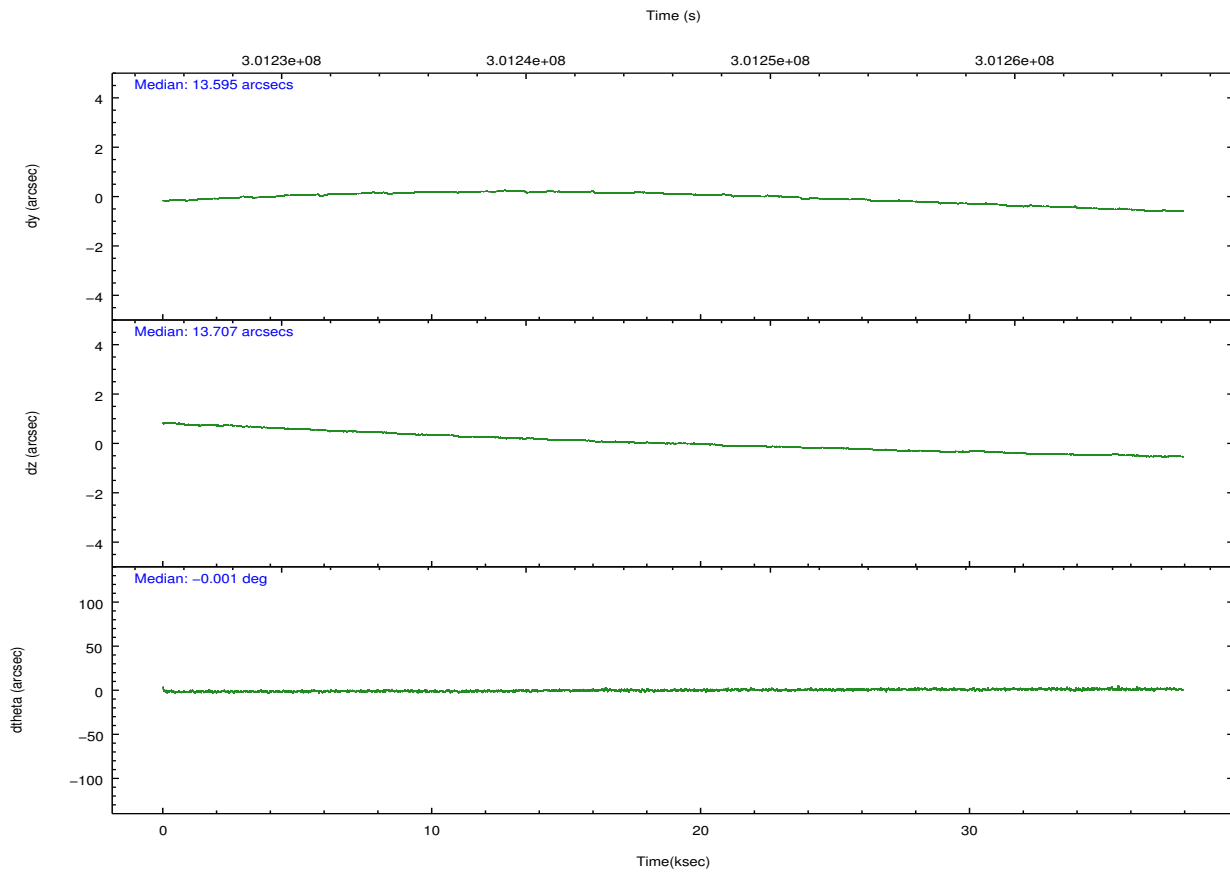
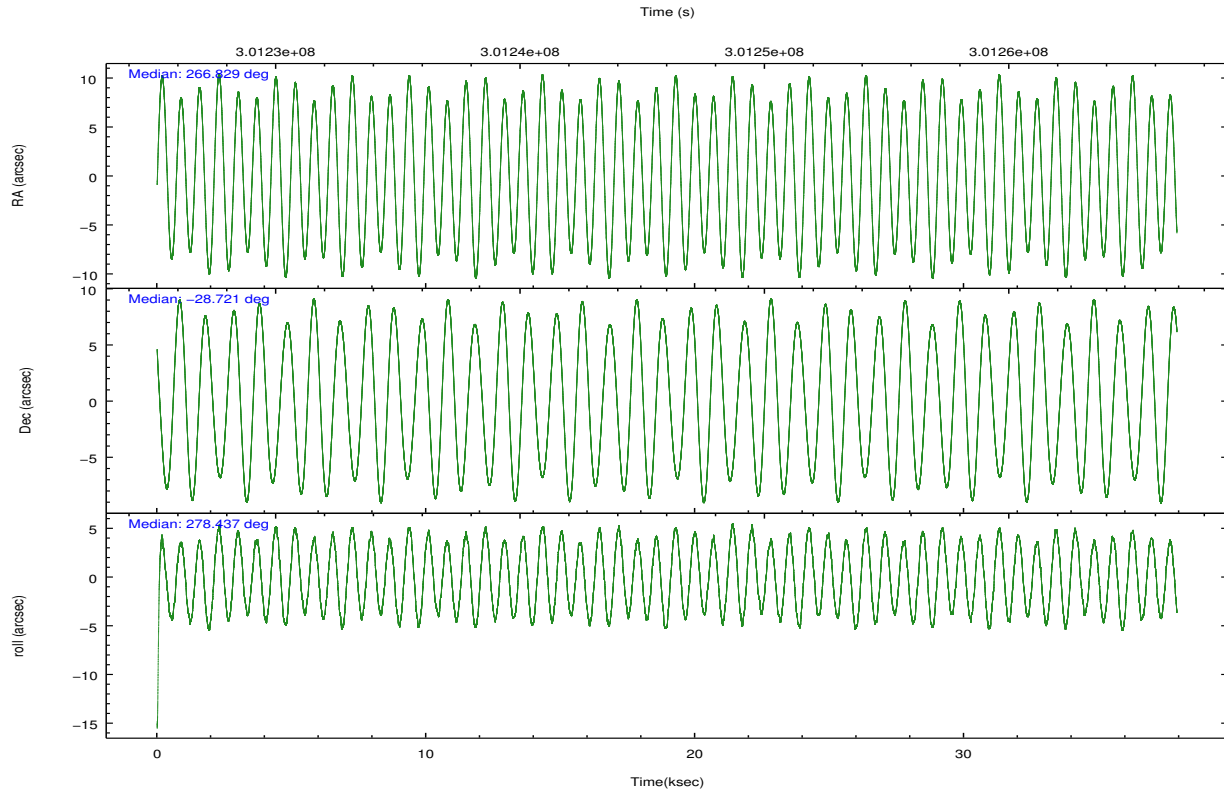
	ccd 0	ccd 1	ccd 2	ccd 3	ccd 6	ccd 7		ccd 0	ccd 1	ccd 2	ccd 3	ccd 6	ccd 7
level 1 events	349955	344973	369357	362904	378974	497010	grade 0 events	28927	24478	22233	23013	21024	17819
rejected events	291705	288503	321778	313854	330001	288436		8%	7%	6%	6%	5%	3%
rejected %	83%	83%	87%	86%	87%	58%	grade 1 events	285	246	272	279	245	505
								0%	0%	0%	0%	0%	0%
							grade 2 events	11444	12185	9657	9215	10171	42766
								3%	3%	2%	2%	2%	8%
							grade 3 events	4752	4858	4176	4421	4285	17781
								1%	1%	1%	1%	1%	3%
							grade 4 events	4407	4886	4171	4382	4218	17586
								1%	1%	1%	1%	1%	3%
							grade 5 events	14631	15554	13760	16682	17251	46787
								4%	4%	3%	4%	4%	9%
							grade 6 events	8730	10069	7354	8033	9279	112650
								2%	2%	1%	2%	2%	22%
							grade 7 events	276779	272697	307734	296879	312501	241116
								79%	79%	83%	81%	82%	48%

2.2 Compared Parameters

Parameter	Planned	Actual	Parameter	Planned	Actual
Instrument	ACIS	ACIS	Obspar format version number	7	7
Detector	ACIS-012367	ACIS-012367	Obspar file type	PREDICTED	ACTUAL
Grating	NONE	NONE	Obspar update status	NONE	UPDATED
Data mode	FAINT	FAINT	Number of optional ACIS chips dropped	0	0
Observation mode	POINTING	POINTING	On-chip summing requested	N	N
[deg] Pointing RA	266.809836	266.8294336995863	Subarray requested	NONE	NONE
[deg] Pointing Dec	-28.699120	-28.72058762246656	Alternating exposures requested	N	N
[deg] Pointing Roll	278.221548	278.439651366093	[s] Primary exposure time	0.000000	3.2
[mm] SIM focus pos	-0.782348	-0.7809083437167272			
[mm] SIM defocus	0	0.001439871863259334			
[mm] SIM translation stage pos	-233.592463	-233.5874344608287			
[mm] SIM translation stage offset	0	-0.005018542100998502			
[s] Observation start time (MET)	301227978.184000	301226645.33853			
Observation start date	2007-07-19T10:25:13	2007-07-19T10:04:05			
[s] Observation end time (MET)	301264978.184000	301265111.54038			
Observation end date	2007-07-19T20:41:53	2007-07-19T20:45:11			
Read mode	TIMED	TIMED			

2.3 Aspect



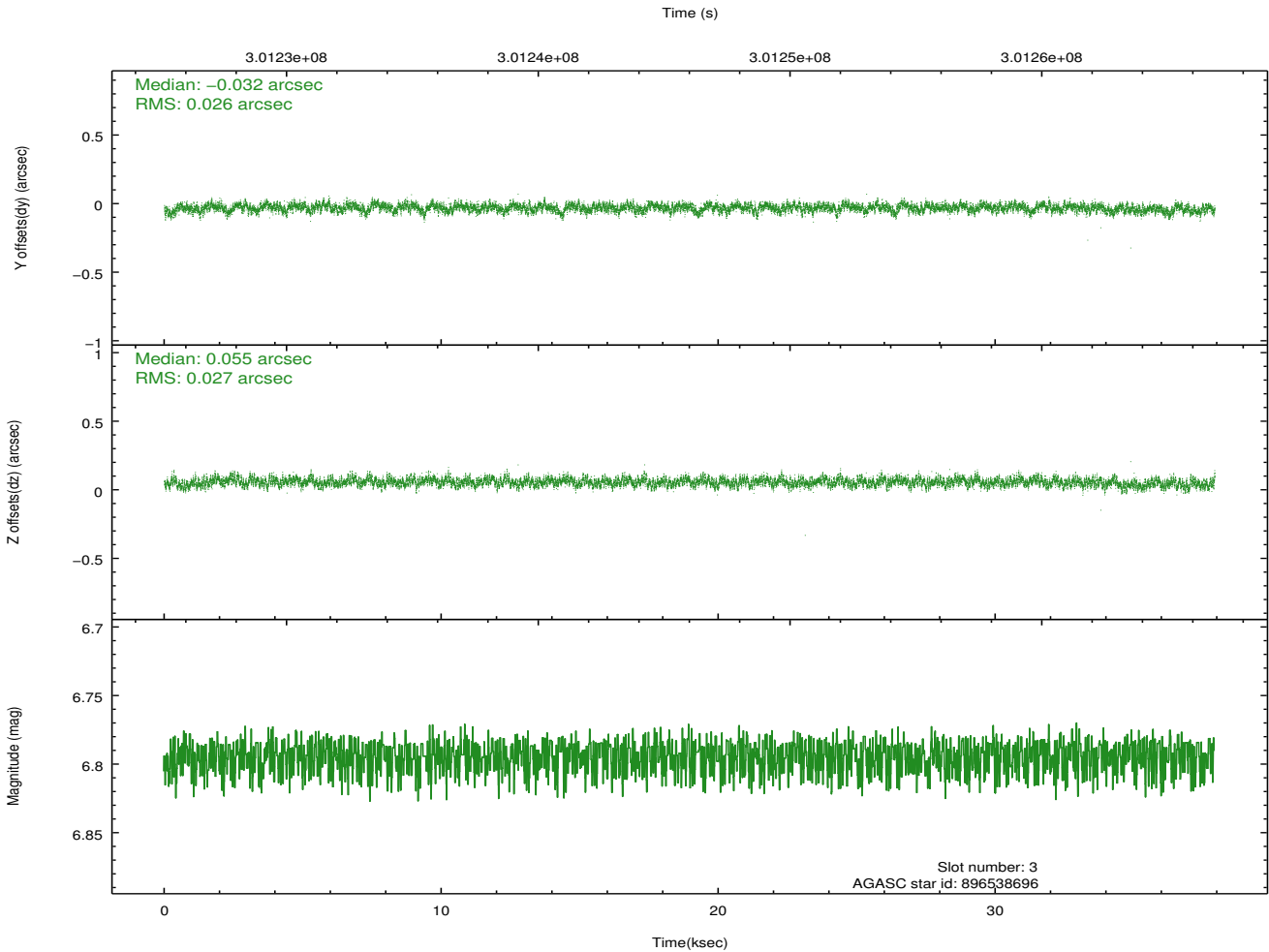
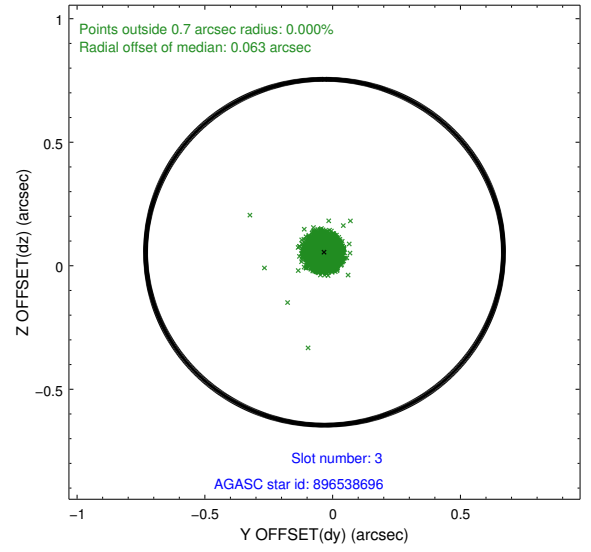
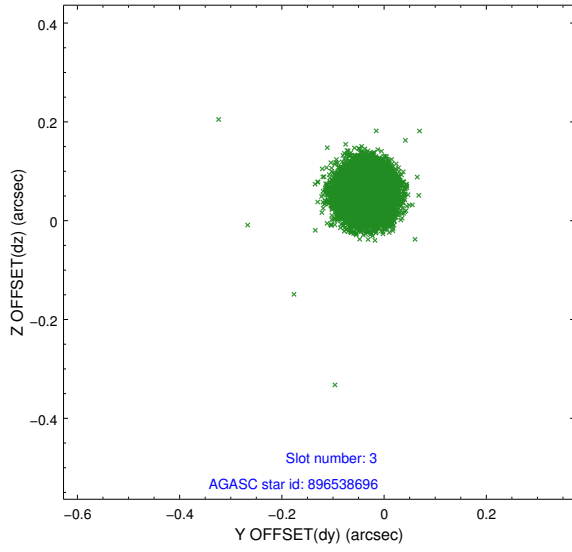


Slot Statistics

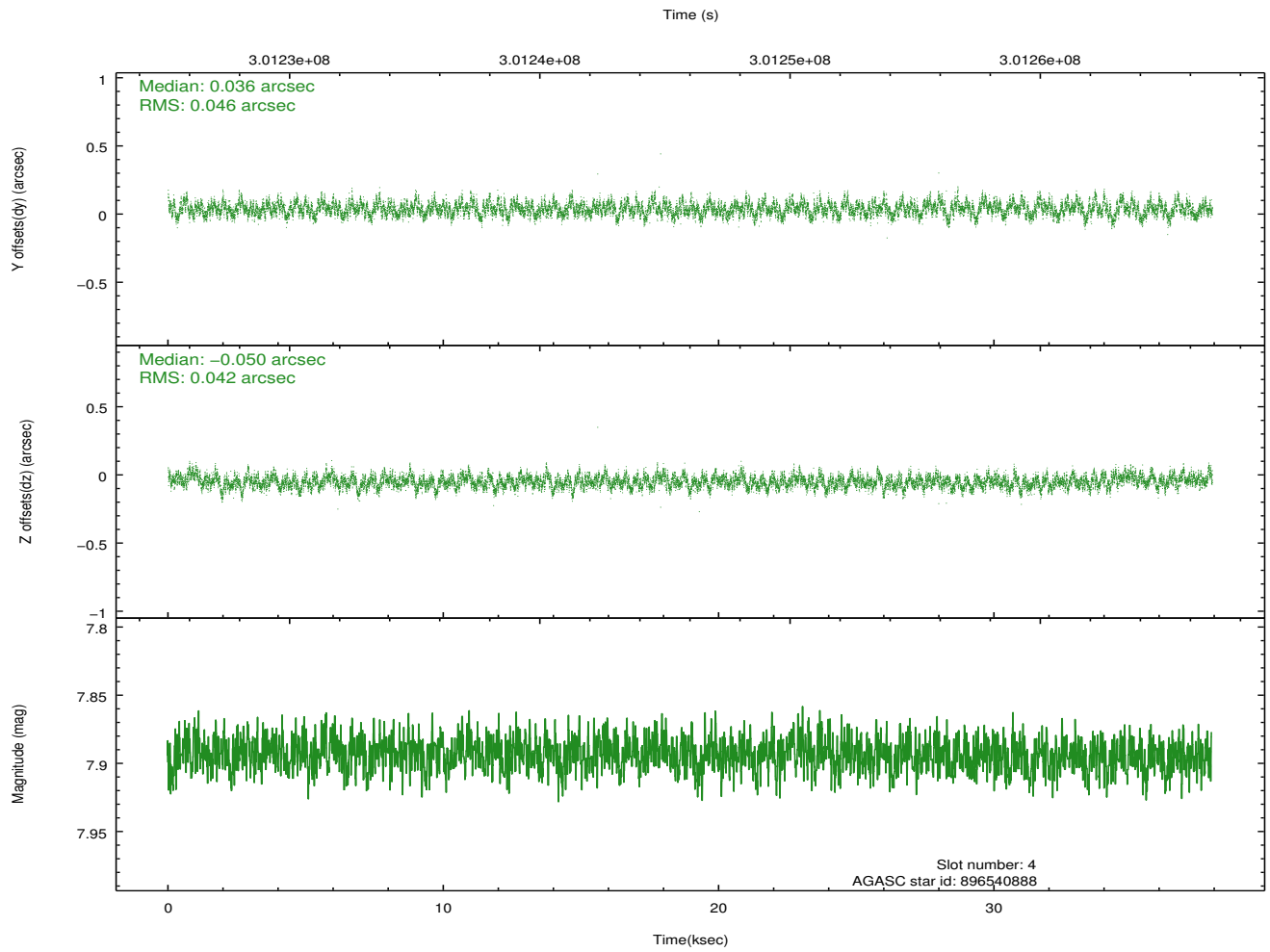
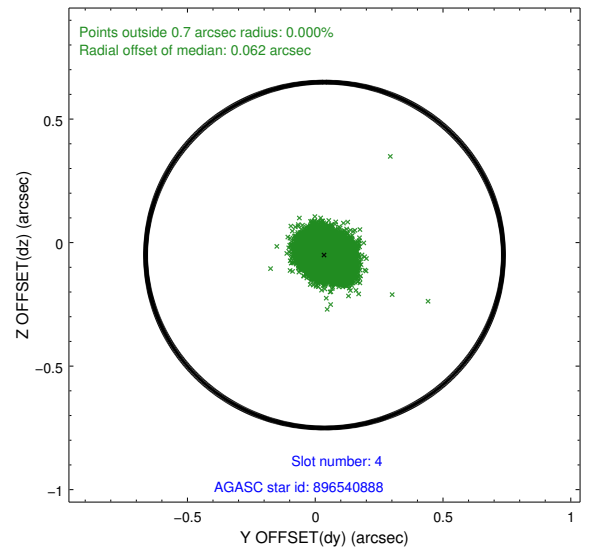
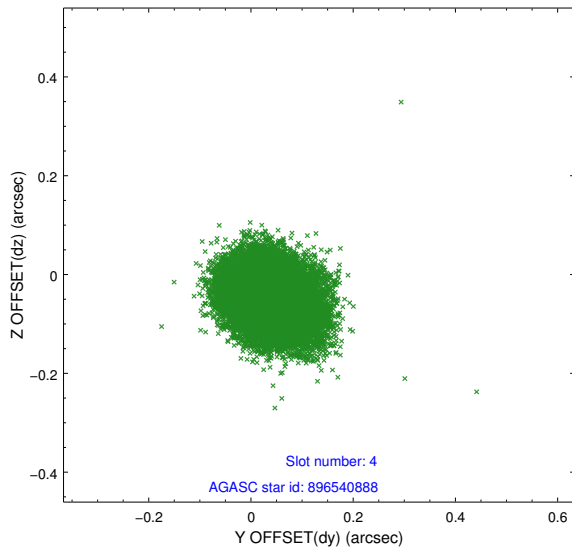
slot	status	id	mag	n_pts	med_dy	med_dz	dr1	dr2	ra	dec	mean_y	mean_z
0	FID	ACIS-I-2	7.13	9248	-0.078	-0.059	0.014	0.026	0.000000	0.000000	-768.30	-843.72
1	FID	ACIS-I-4	7.16	9246	0.236	0.065	0.010	0.017	0.000000	0.000000	2146.10	1062.50
2	FID	ACIS-I-5	7.22	9249	-0.259	0.063	0.013	0.022	0.000000	0.000000	-1822.23	1060.46
3	GUIDE	896538696	6.79	18497	-0.032	0.055	0.040	0.063	266.298470	-28.325572	-1558.96	-1412.00
4	GUIDE	896540888	7.89	18494	0.036	-0.050	0.067	0.108	267.212234	-28.246138	-1429.23	1495.84
5	GUIDE	896541576	8.16	18493	0.005	-0.043	0.052	0.085	267.051055	-28.762912	337.09	720.62
6	GUIDE	896539744	8.32	18492	-0.036	-0.016	0.066	0.106	266.154264	-28.178023	-2148.24	-1791.60
7	GUIDE	896533888	7.05	18497	0.028	0.057	0.048	0.076	266.666434	-29.392757	2407.62	-802.17

2.4 Star Slots

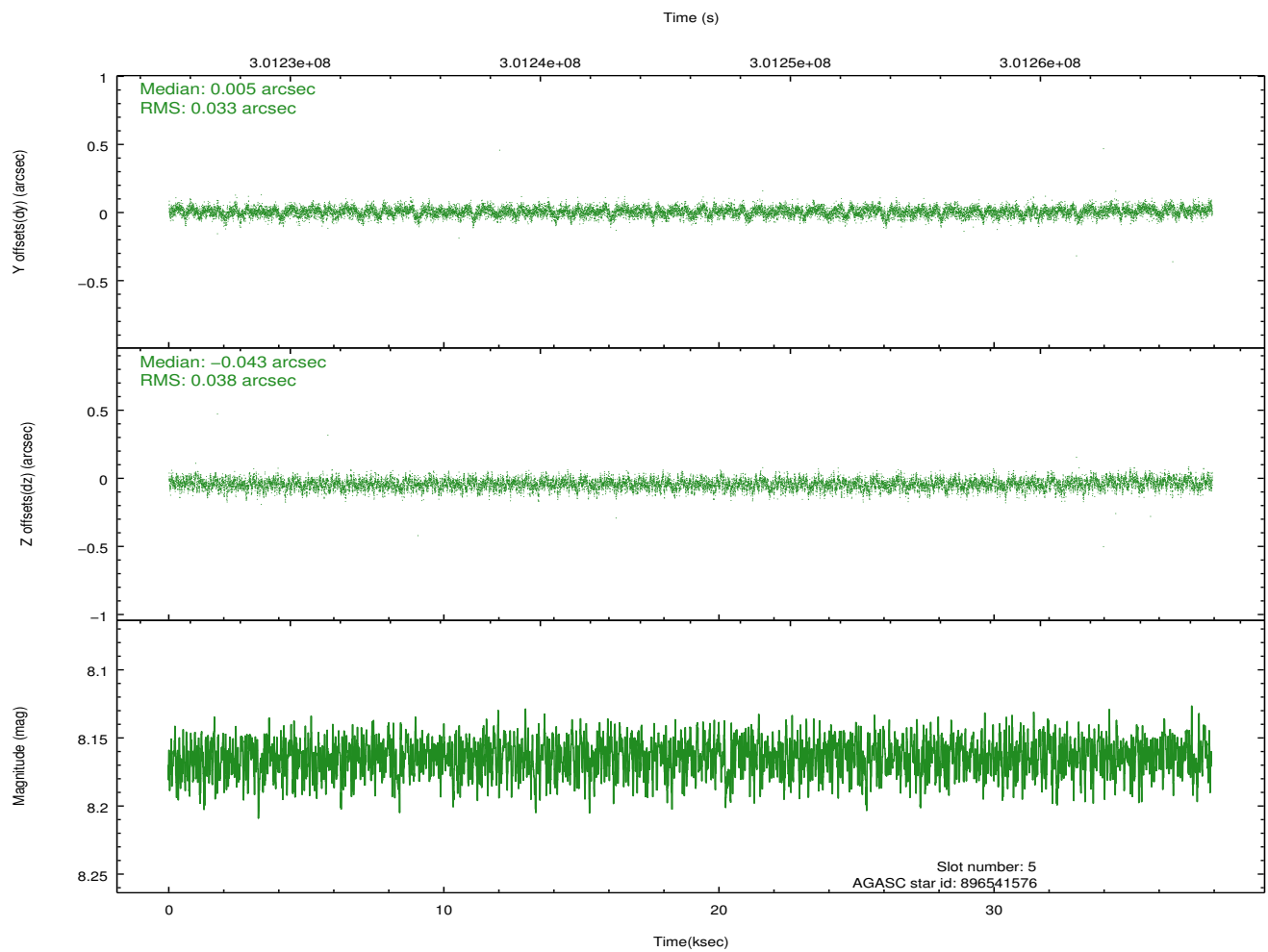
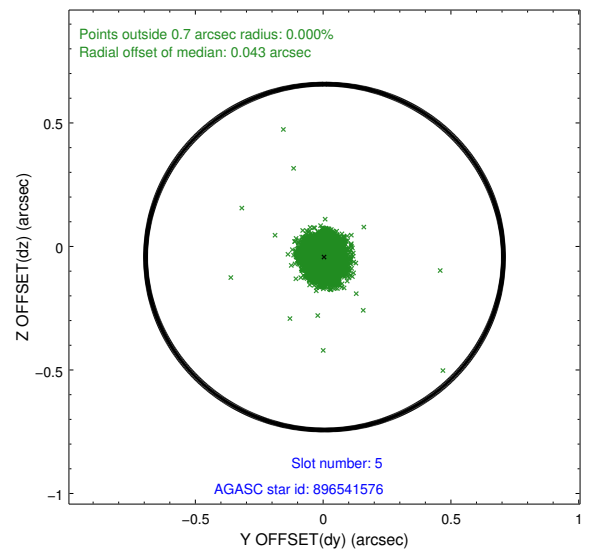
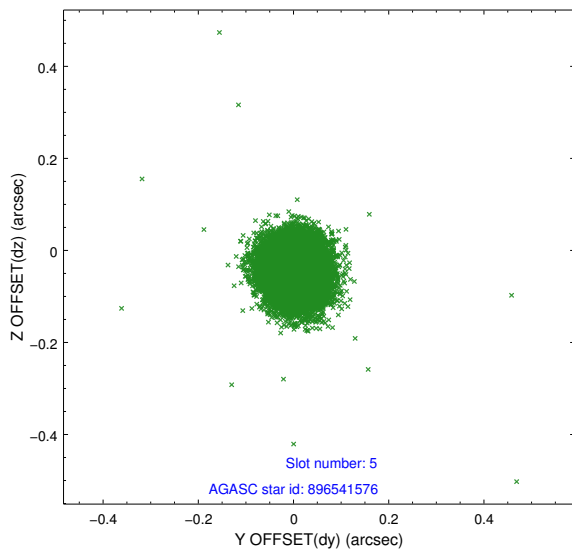
2.4.1 Slot 3



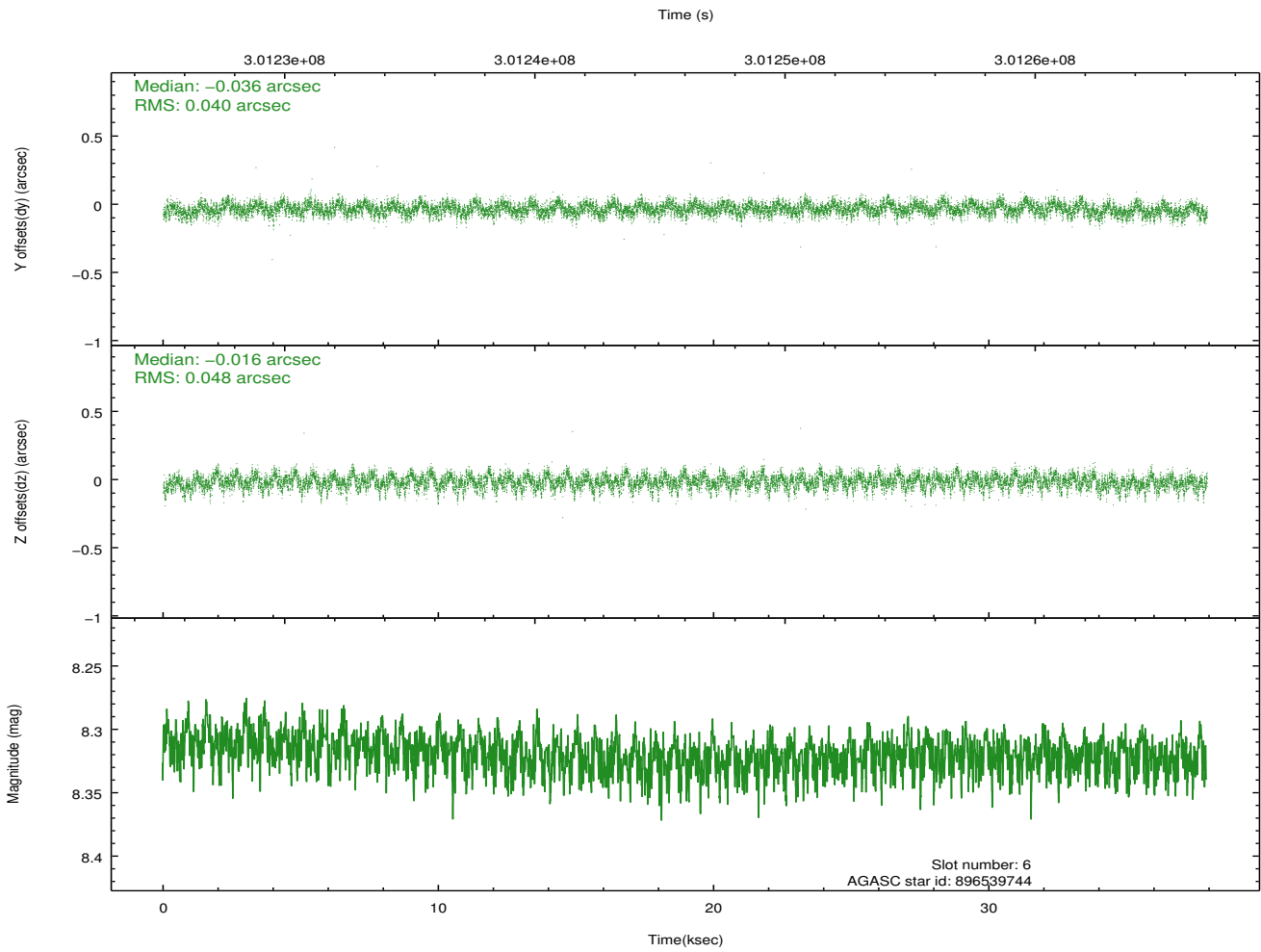
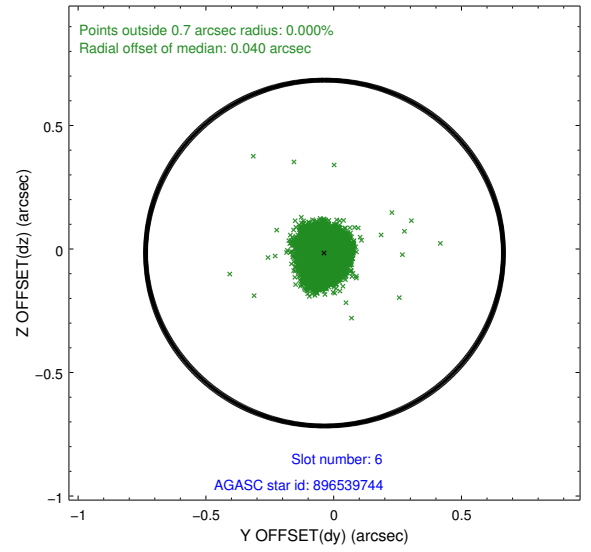
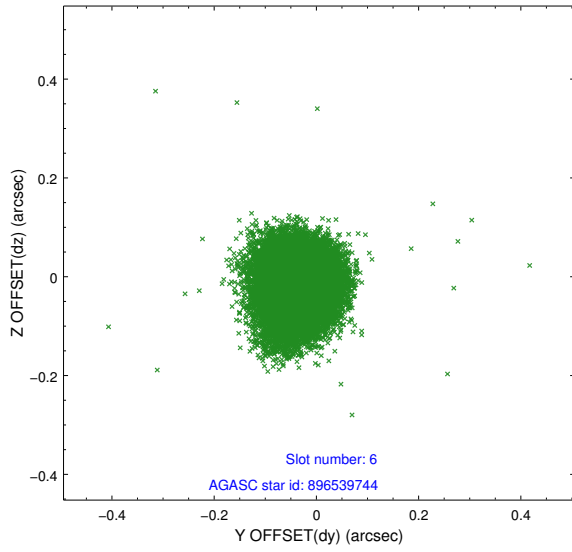
2.4.2 Slot 4



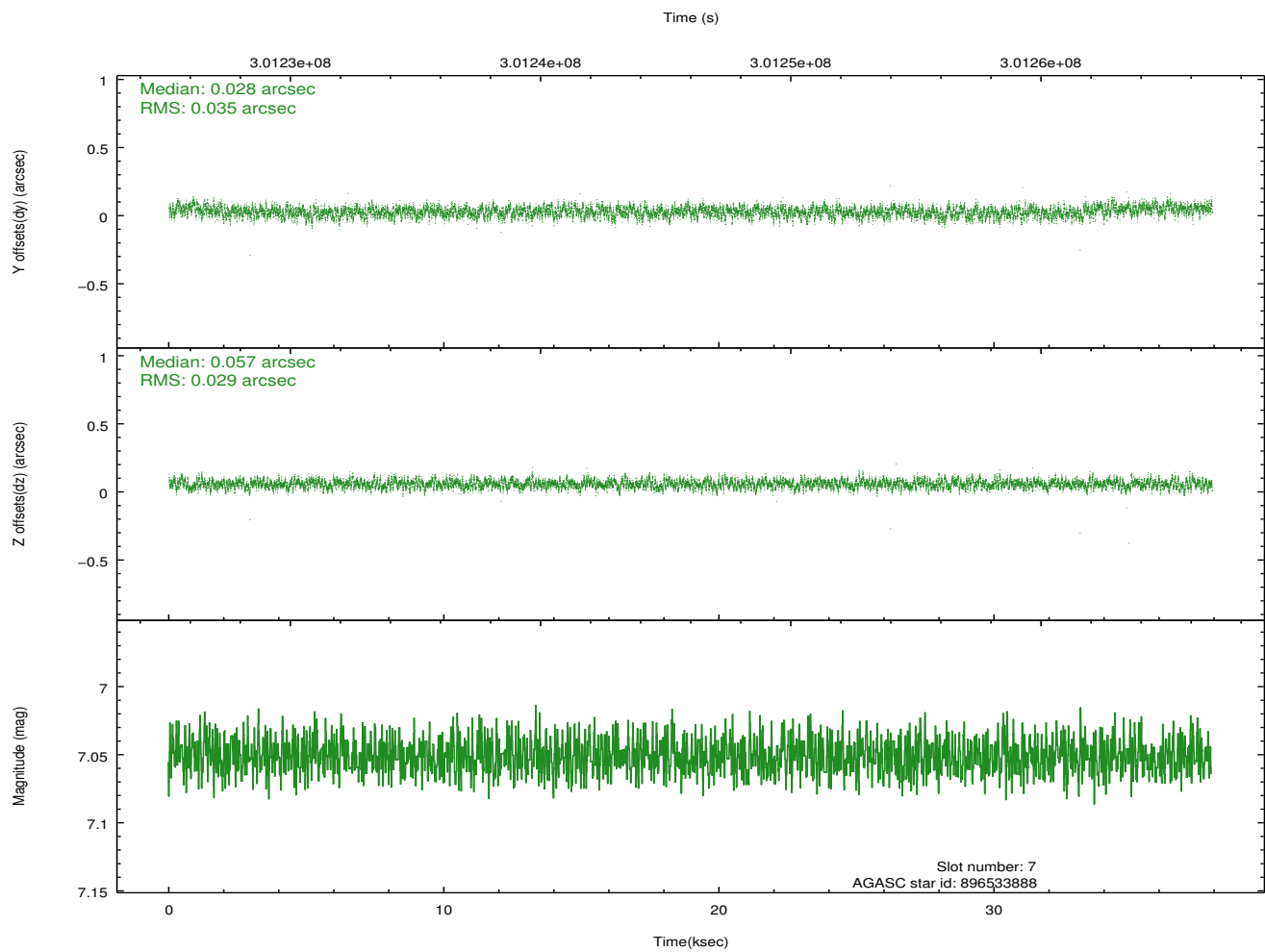
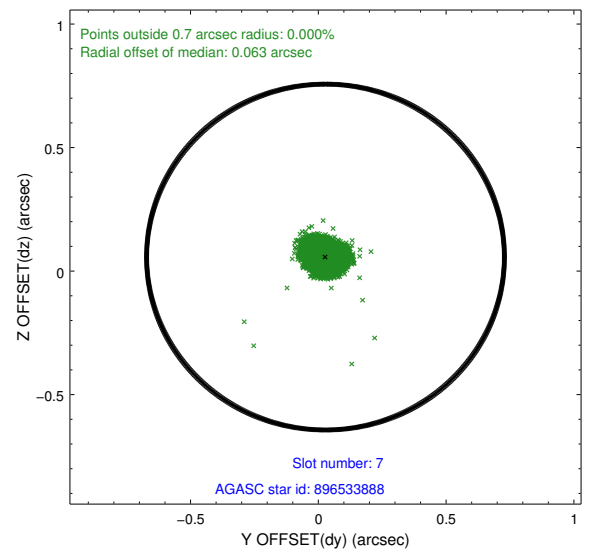
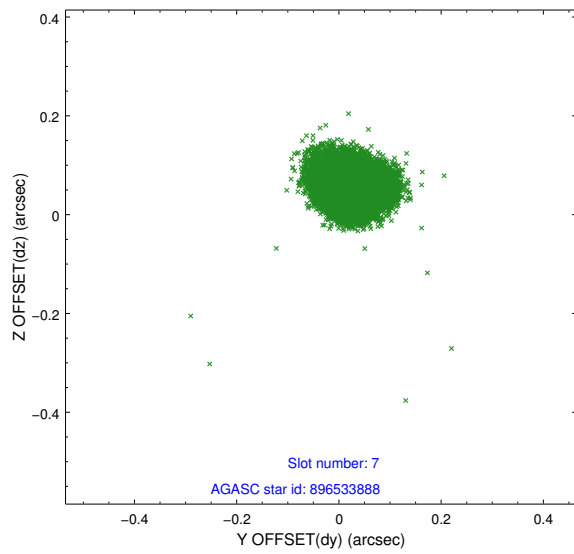
2.4.3 Slot 5



2.4.4 Slot 6

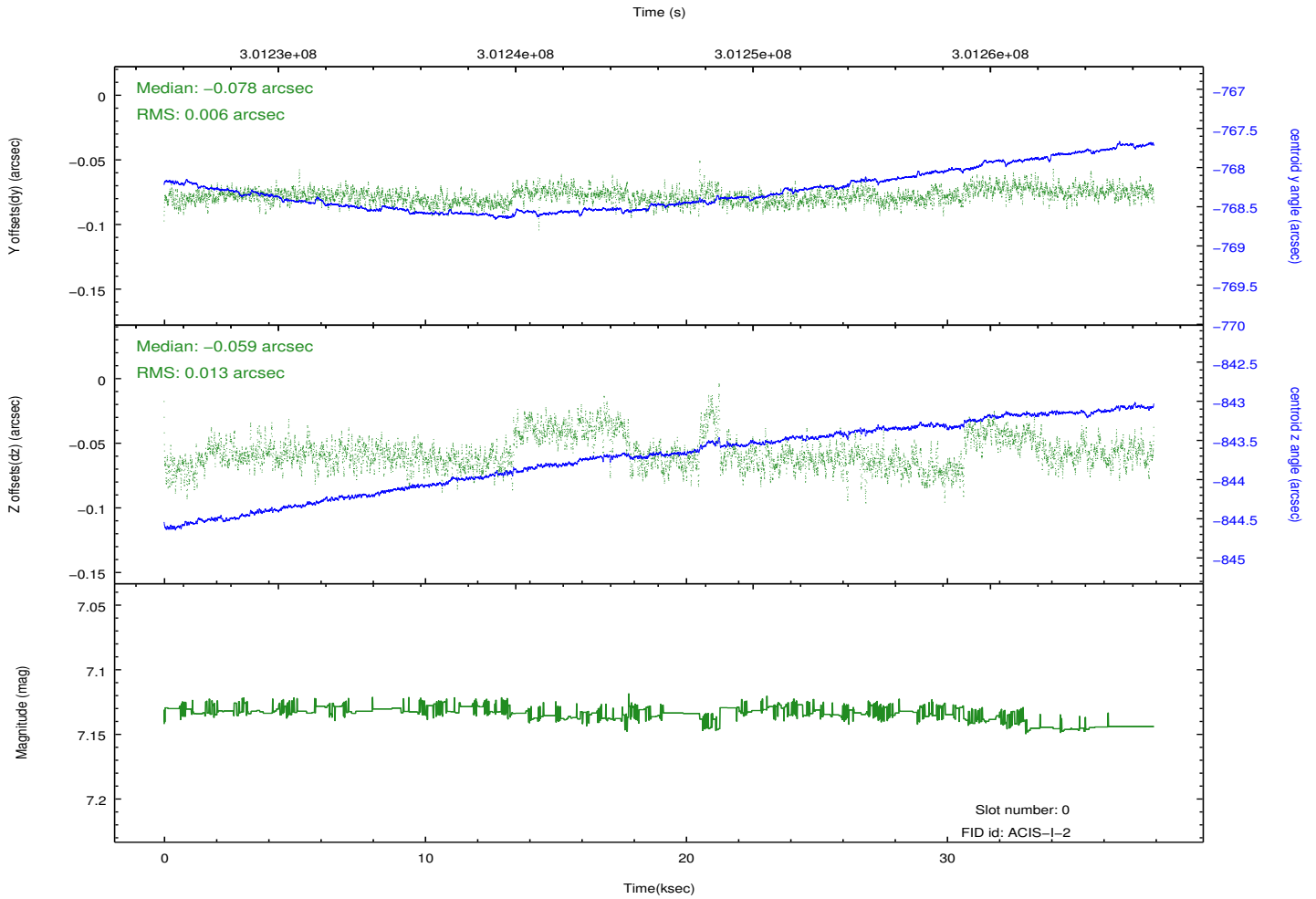
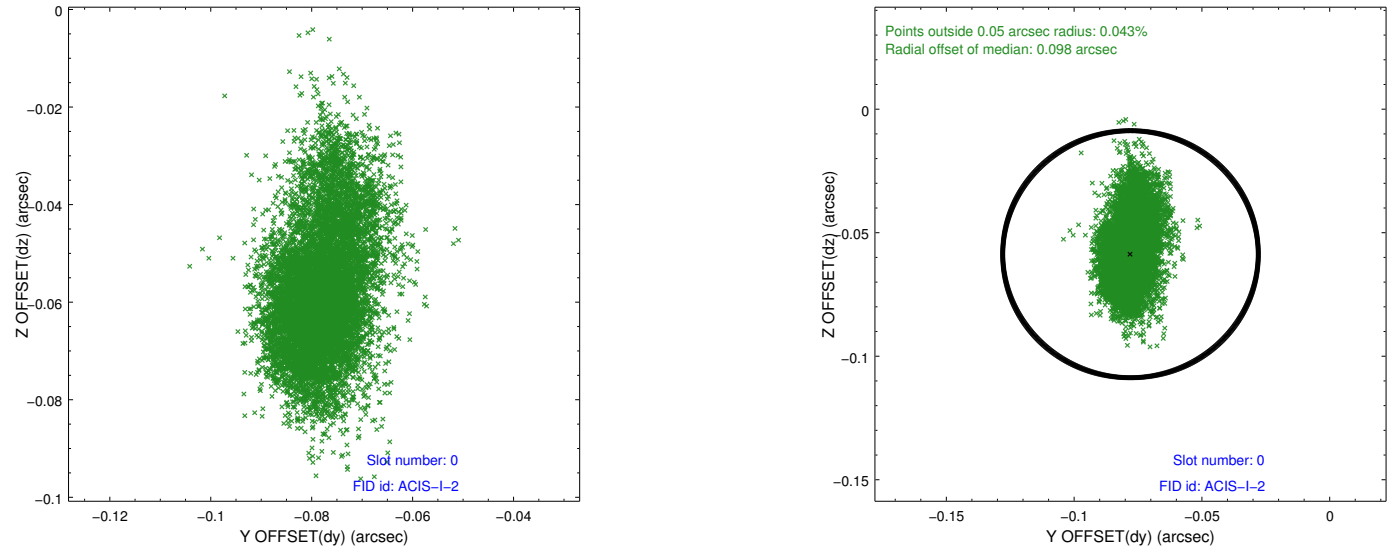


2.4.5 Slot 7

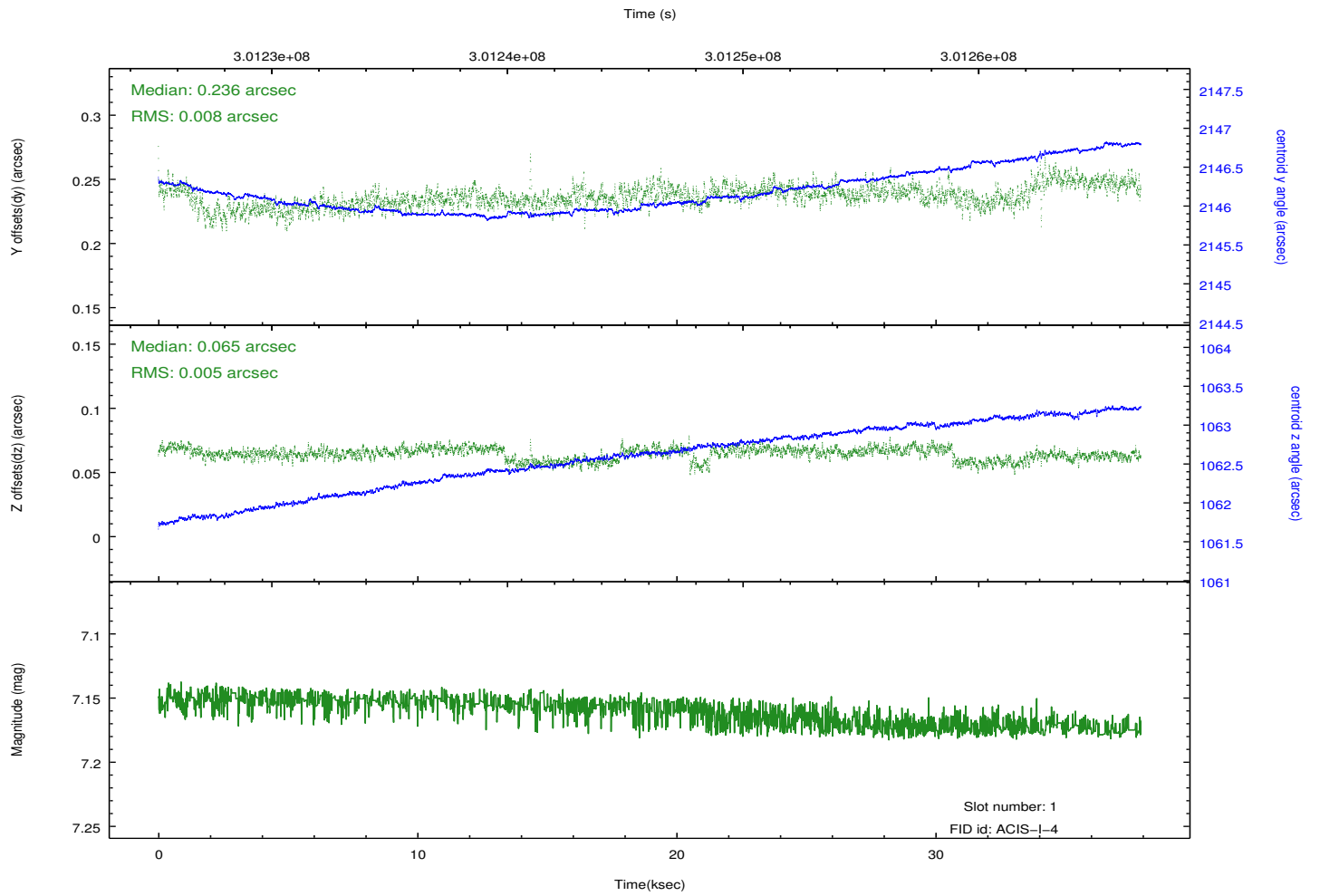
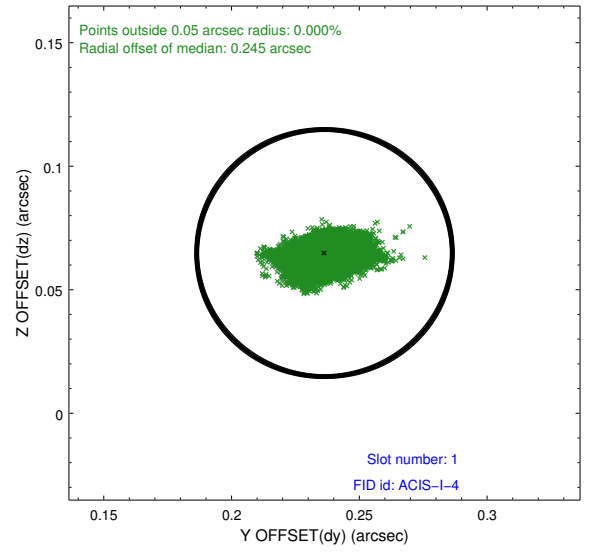
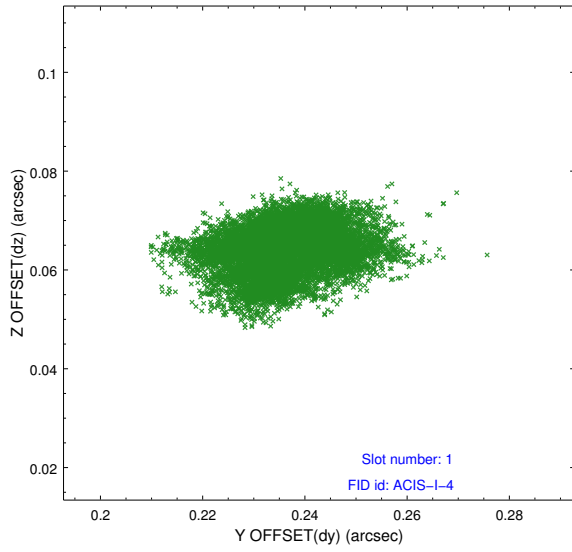


2.5 FID Slots

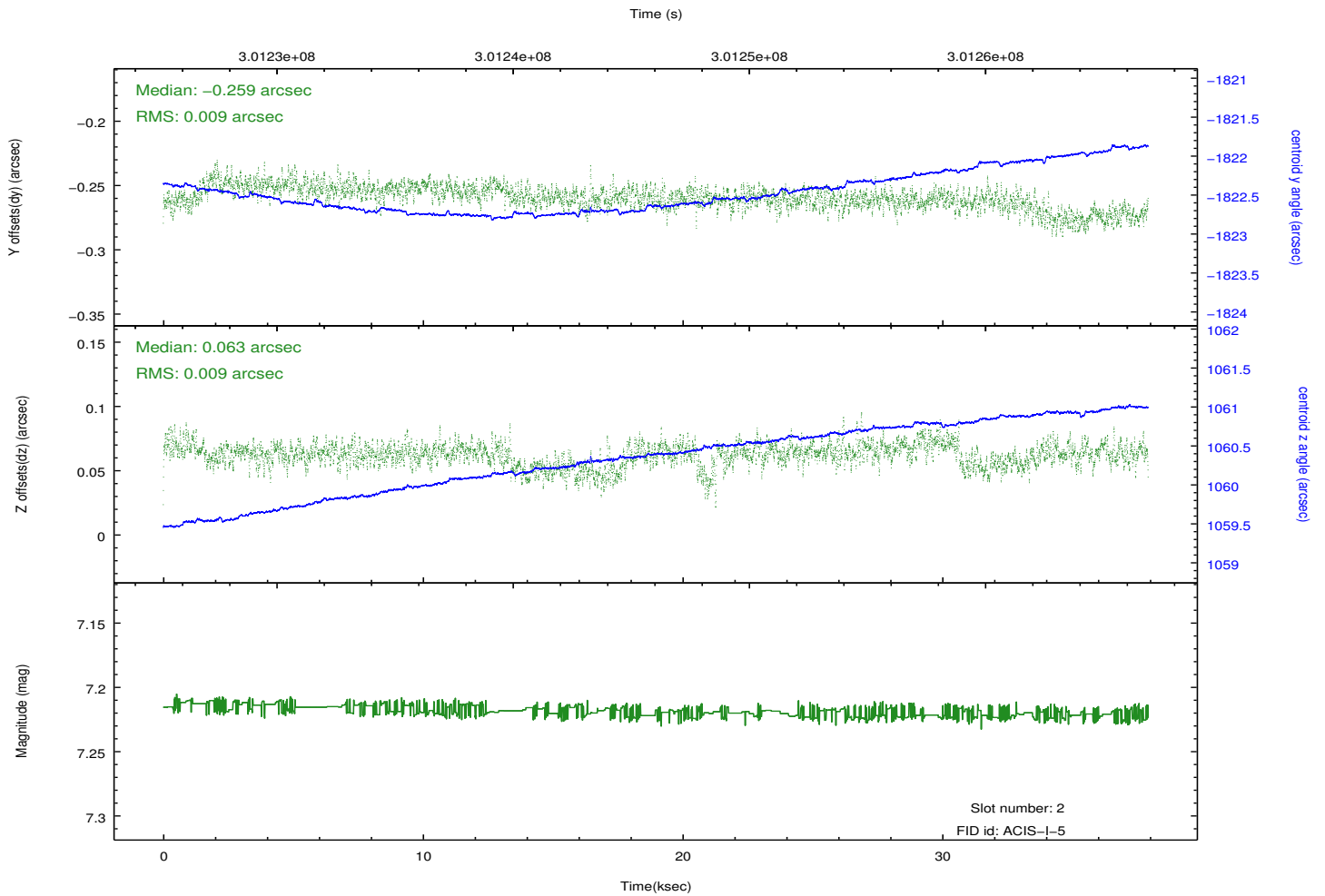
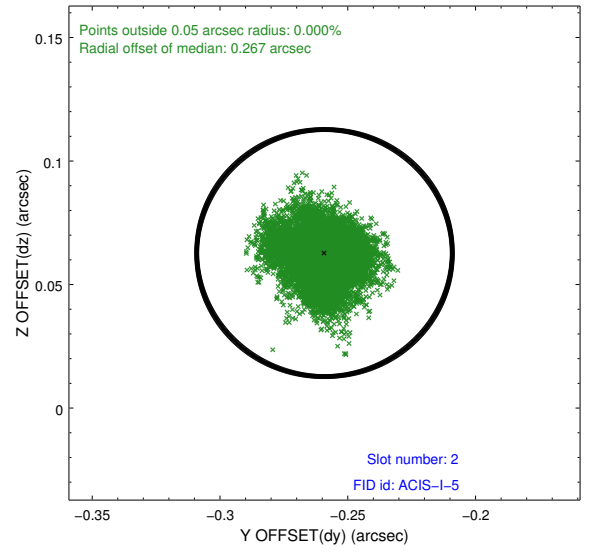
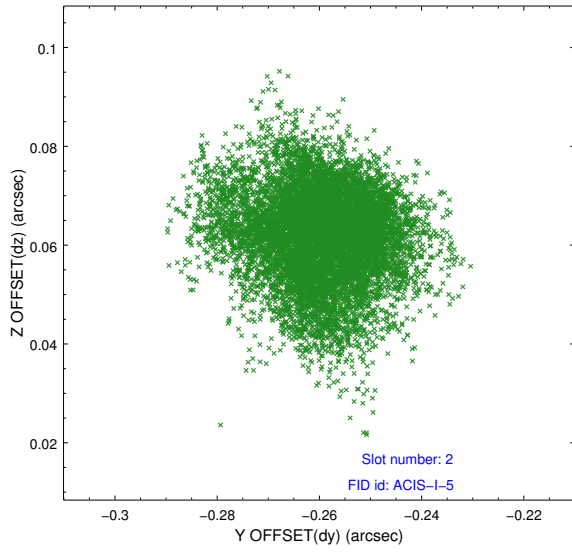
2.5.1 Slot 0



2.5.2 Slot 1



2.5.3 Slot 2



A Summary

A.1 Status

V&V Scientist	Jen Lauer
V&V Date (YYYY-MM-DD)	2012.04.30
V&V Edition	1
V&V Disposition and Status	OK
V&V Charge Time	36.9439588

A.2 Comments

Roll preference met.