

V&V Reference Report

L2 ASCDS Version : 8.4.3.1

Observation 7166 - L2 Version 2
Chandra X-Ray Center

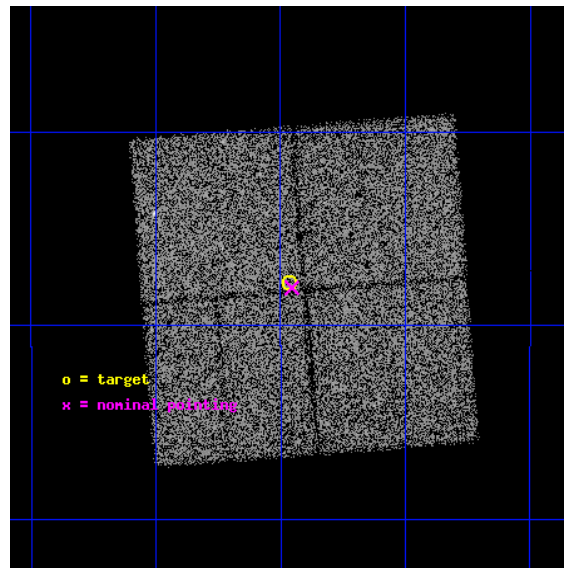
L2 Processing Date : Apr 12 2012

Contents

1	Front	2
2	OBI	3
2.1	OBI	3
2.1.1	Images	3
2.1.2	Bias	3
2.1.3	Parameters	4
2.1.4	Events	4
2.2	Compared Parameters	5
2.3	Aspect	6
2.4	Star Slots	9
2.4.1	Slot 3	9
2.4.2	Slot 4	10
2.4.3	Slot 5	11
2.4.4	Slot 6	12
2.4.5	Slot 7	13
2.5	FID Slots	14
2.5.1	Slot 0	14
2.5.2	Slot 1	15
2.5.3	Slot 2	16
A	Summary	17
A.1	Status	17
A.2	Comments	17

1 Front

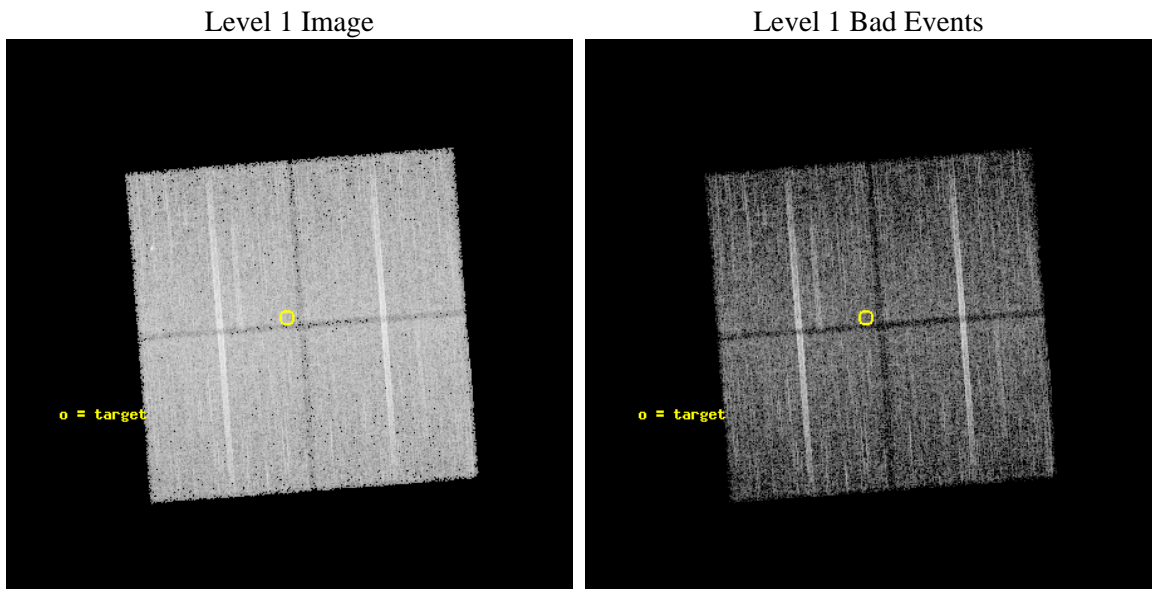
seq_num	600604	Sequence number
obs_id	7166	Observation id
title	Galactic Bulge Latitude Survey	Proposal title
observer	Professor Johnathan Grindlay	Principal investigator
object	GBW10	Source name
dtcycle	0	
cycle	P	events from which exps? Prim/Second/Both
ra_targ	267.36625	Observer's specified target RA [deg]
dec_targ	-29.463611	Observer's specified target Dec [deg]
ra_nom	267.36376716297	Nominal RA [deg]
dec_nom	-29.467756451112	Nominal Dec [deg]
roll_nom	265.5974647442	Nominal Roll [deg]
revision	2	Processing version of data
ontime	13463.300103545	Sum of GTIs [s]
livetime	13287.392176155	Livetime [s]
ontime0	13460.159133136	Sum of GTIs [s]
ontime1	13460.159133196	Sum of GTIs [s]
ontime2	13457.018142939	Sum of GTIs [s]
ontime3	13463.300103545	Sum of GTIs [s]
l2events	64597	Number of level 2 events



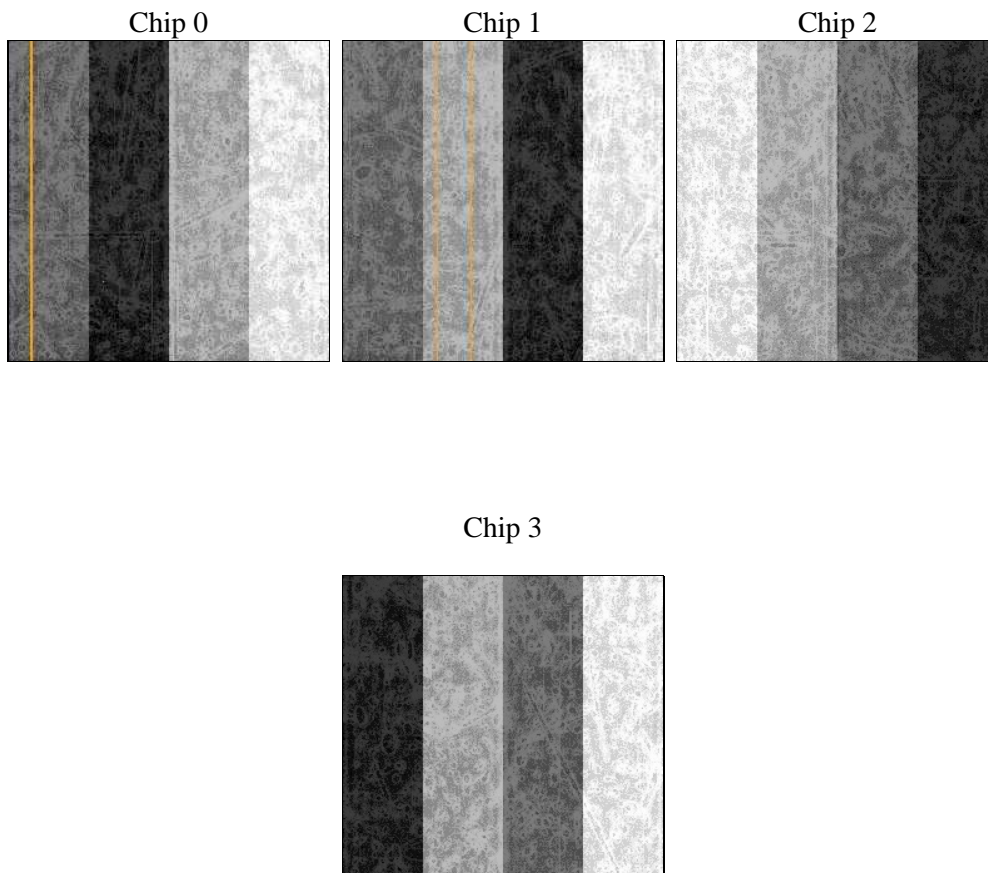
2 OBI

2.1 OBI

2.1.1 Images



2.1.2 Bias



2.1.3 Parameters

obi_num	1	Obi number	sched_exp_time	13675.436000	[s] Scheduled observation exposure time
ascdsver	8.4.3.1	Processing system revision	ontime	13463.300103545	Sum of GTIs [s]
caldsver	4.4.9	 	ontime0	13460.159133136	Sum of GTIs [s]
date	2012-04-12T08:16:43	Date and time of file creation	ontime1	13460.159133196	Sum of GTIs [s]
revision	2	Processing version of data	ontime2	13457.018142939	Sum of GTIs [s]
			ontime3	13463.300103545	Sum of GTIs [s]
			l1events	492923	Number of level 1 events

2.1.4 Events

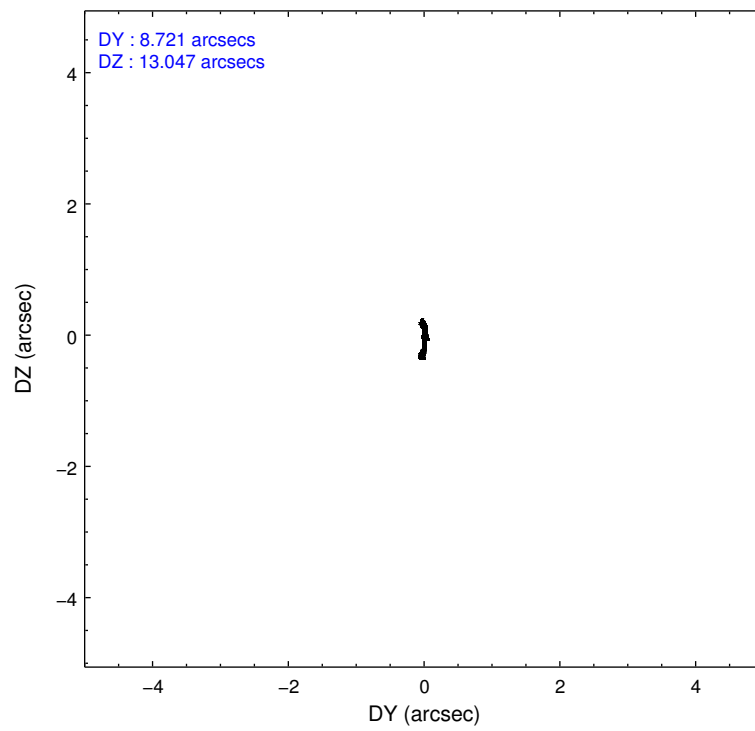
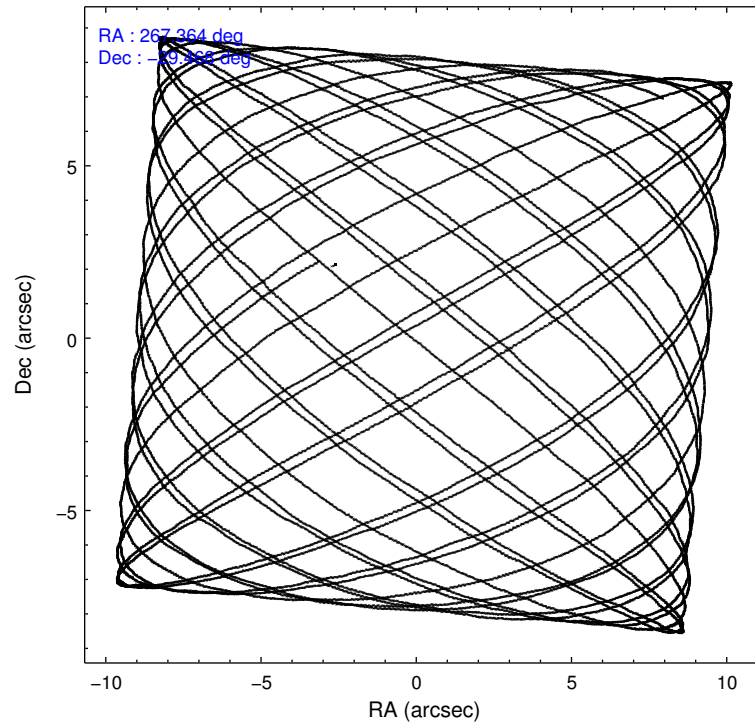
	ccd 0	ccd 1	ccd 2	ccd 3
level 1 events	119908	117109	128033	127873
rejected events	101634	98206	109425	109440
rejected %	84%	83%	85%	85%

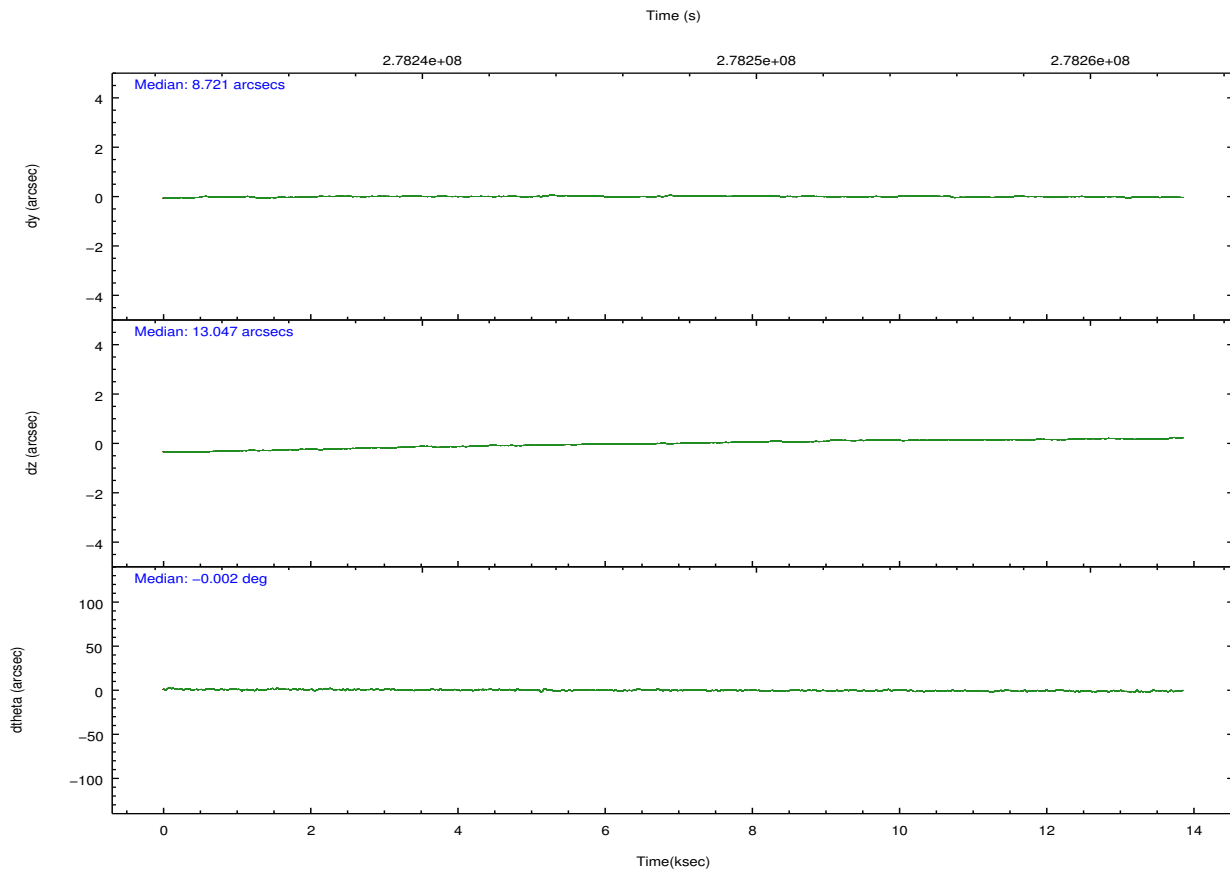
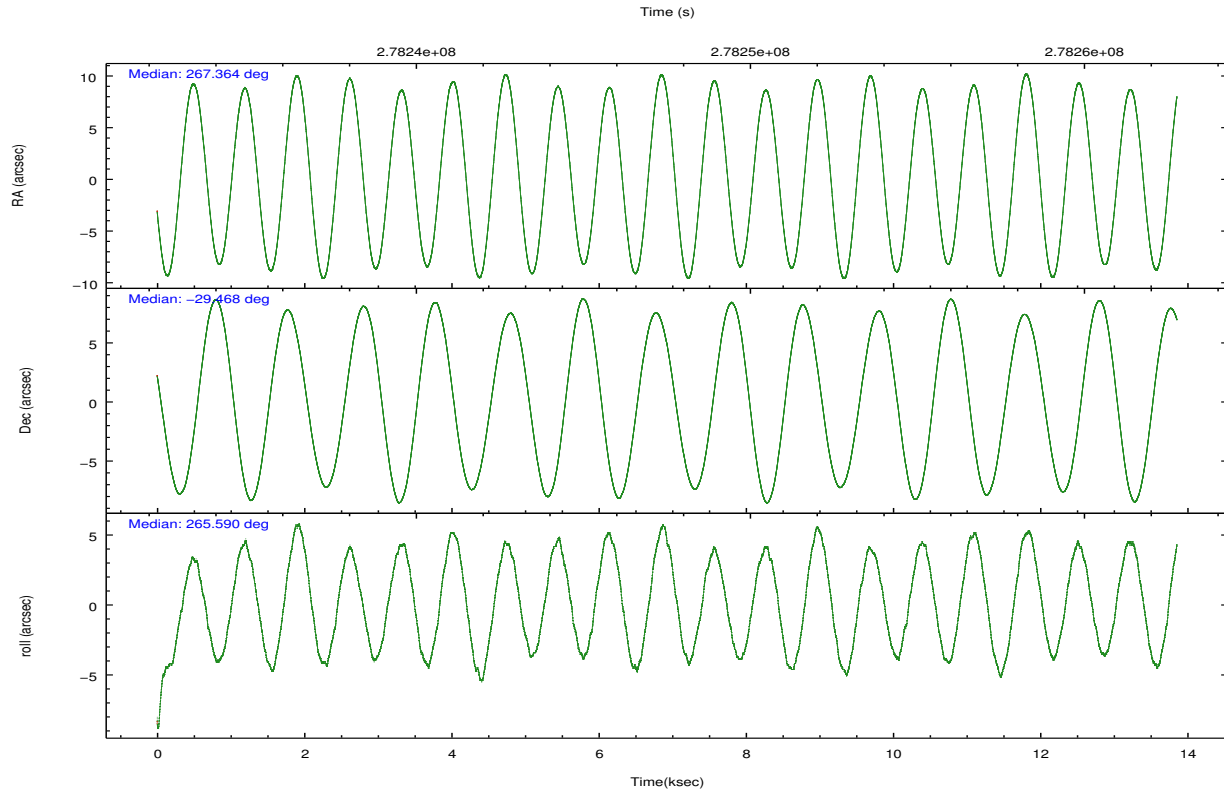
	ccd 0	ccd 1	ccd 2	ccd 3
grade 0 events	8923	8819	9888	9354
	7%	7%	7%	7%
grade 1 events	94	90	107	99
	0%	0%	0%	0%
grade 2 events	3677	3897	3404	3163
	3%	3%	2%	2%
grade 3 events	1540	1528	1476	1570
	1%	1%	1%	1%
grade 4 events	1477	1572	1402	1563
	1%	1%	1%	1%
grade 5 events	4817	5261	4719	5676
	4%	4%	3%	4%
grade 6 events	2664	3098	2445	2785
	2%	2%	1%	2%
grade 7 events	96716	92844	104592	103663
	80%	79%	81%	81%

2.2 Compared Parameters

Parameter	Planned	Actual	Parameter	Planned	Actual
Instrument	ACIS	ACIS	Obspar format version number	7	7
Detector	ACIS-0123	ACIS-0123	Obspar file type	PREDICTED	ACTUAL
Grating	NONE	NONE	Obspar update status	NONE	UPDATED
Data mode	VFAINT	VFAINT	Number of optional ACIS chips dropped	0	0
Observation mode	POINTING	POINTING	On-chip summing requested	N	N
[deg] Pointing RA	267.350100	267.3637671629695	Subarray requested	NONE	NONE
[deg] Pointing Dec	-29.443074	-29.46775645111162	Alternating exposures requested	N	N
[deg] Pointing Roll	265.382064	265.5974647442017	[s] Primary exposure time	0.000000	3.1
[mm] SIM focus pos	-0.782348	-0.7809083437167272			
[mm] SIM defocus	0	0.001439871863259334			
[mm] SIM translation stage pos	-233.592463	-233.5874344608287			
[mm] SIM translation stage offset	0	-0.005018542100998502			
[s] Observation start time (MET)	278241999.184000	278241622.97057			
Observation start date	2006-10-26T09:25:34	2006-10-26T09:20:22			
[s] Observation end time (MET)	278255674.184000	278255914.03374			
Observation end date	2006-10-26T13:13:29	2006-10-26T13:18:34			
Read mode	TIMED	TIMED			

2.3 Aspect





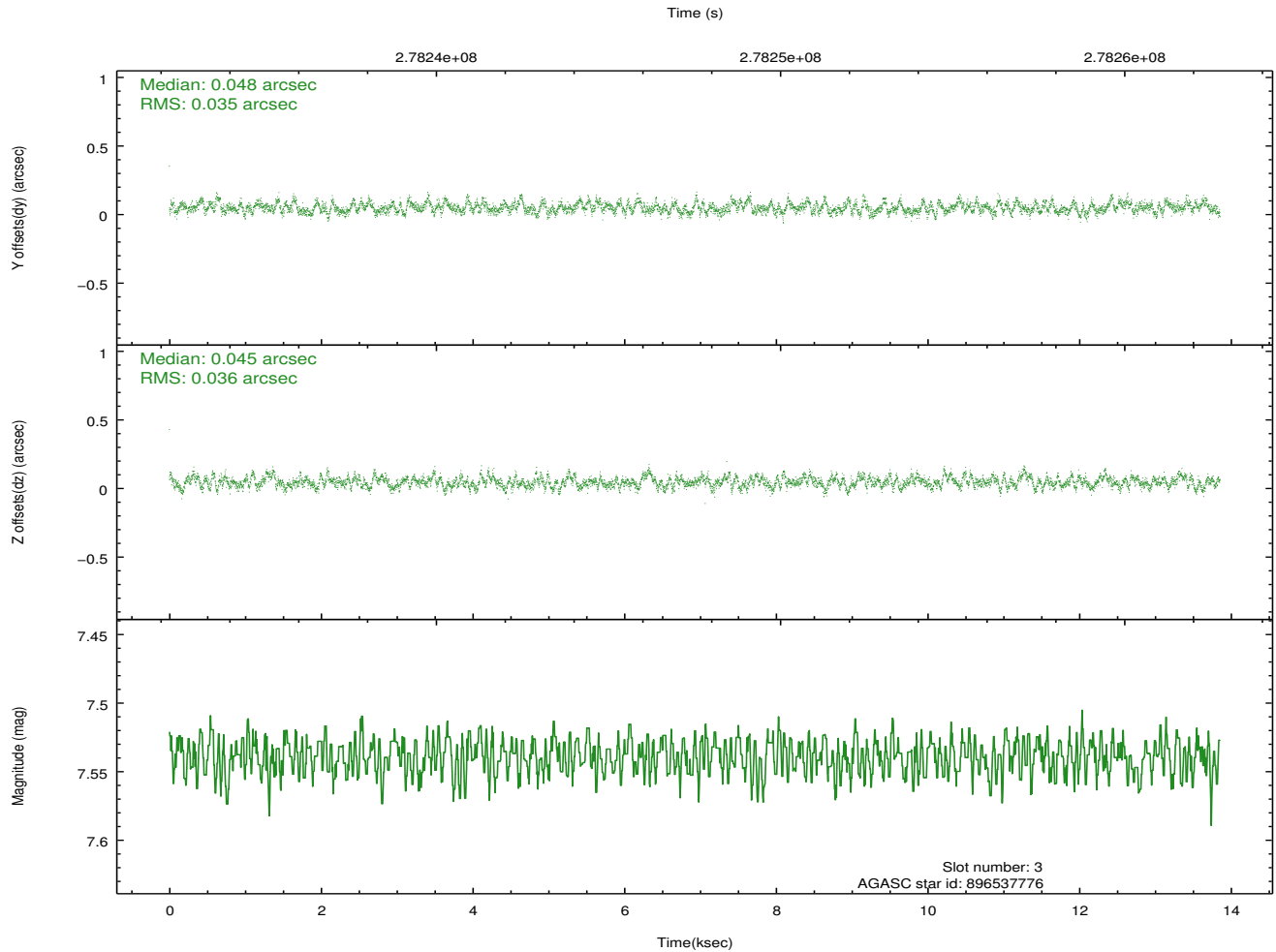
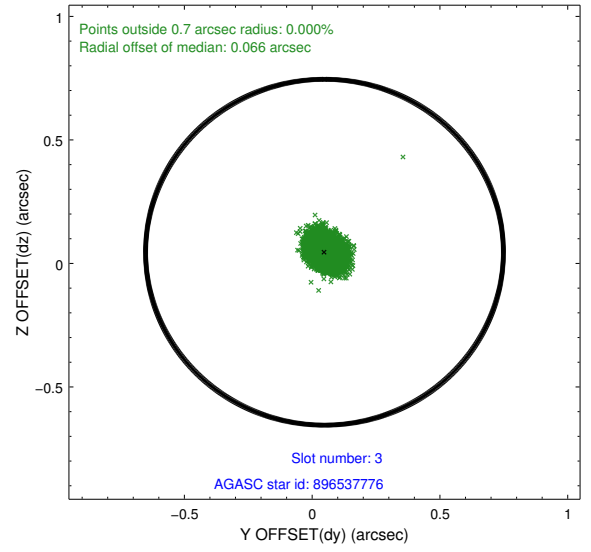
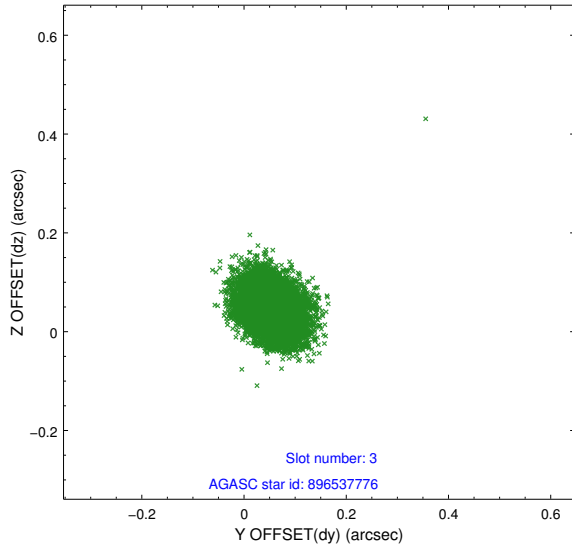
Slot Statistics

slot	status	id	mag	n_pts	med_dy	med_dz	dr1	dr2	ra	dec	mean_y	mean_z
0	FID	ACIS-I-1	7.24	3380	0.041	0.000	0.010	0.019	0.000000	0.000000	930.95	-836.58
1	FID	ACIS-I-5	7.24	3380	-0.191	0.054	0.010	0.016	0.000000	0.000000	-1817.20	1060.80
2	FID	ACIS-I-6	7.24	3380	0.059	0.017	0.009	0.015	0.000000	0.000000	396.15	1705.64
3	GUIDE	896537776	7.54	6760	0.048	0.045	0.053	0.086	266.655684	-29.665673	980.64	-2099.80
4	GUIDE	896541360	7.73	6757	0.032	-0.048	0.053	0.084	266.684478	-29.453744	212.84	-2076.35
5	GUIDE	896541576	8.17	6760	-0.090	0.053	0.054	0.086	267.051055	-28.762912	-2363.21	-1138.20
6	GUIDE	898248800	8.20	6759	0.069	0.057	0.058	0.091	267.977609	-29.931731	1600.77	2093.75
7	GUIDE	898250872	7.06	6756	-0.059	-0.105	0.052	0.082	268.026303	-29.632040	513.91	2164.80

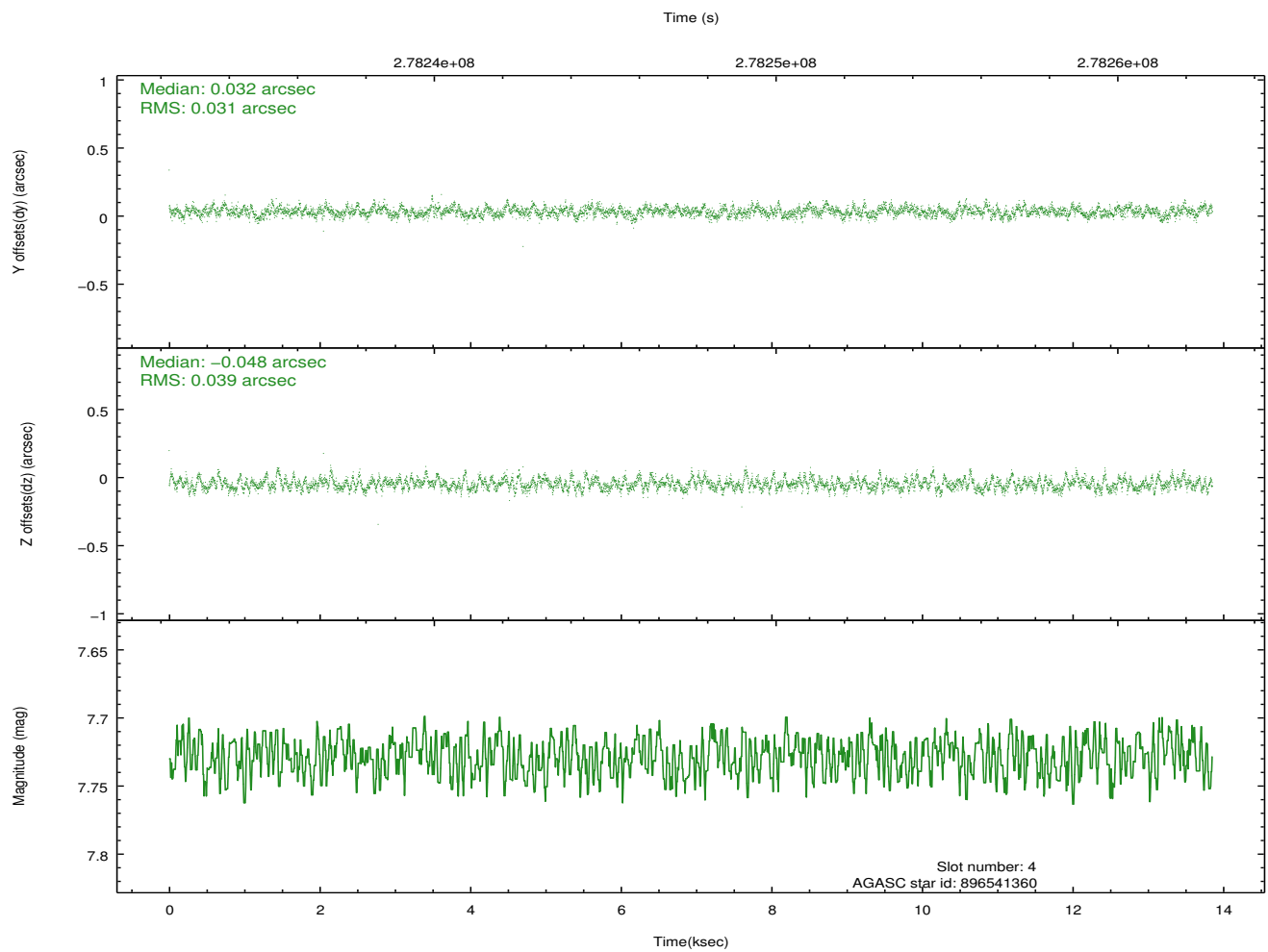
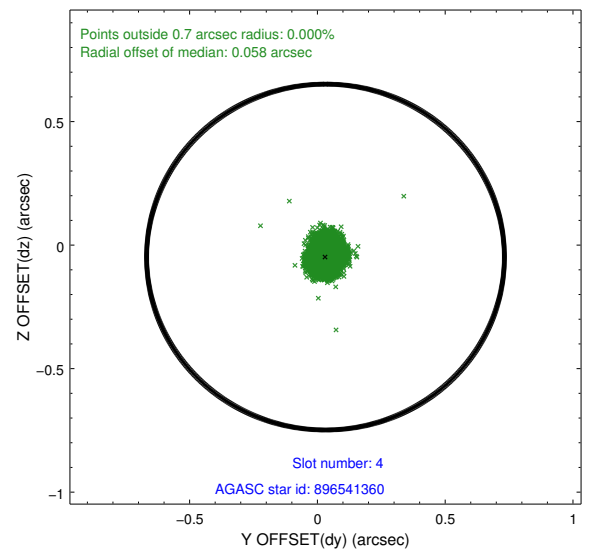
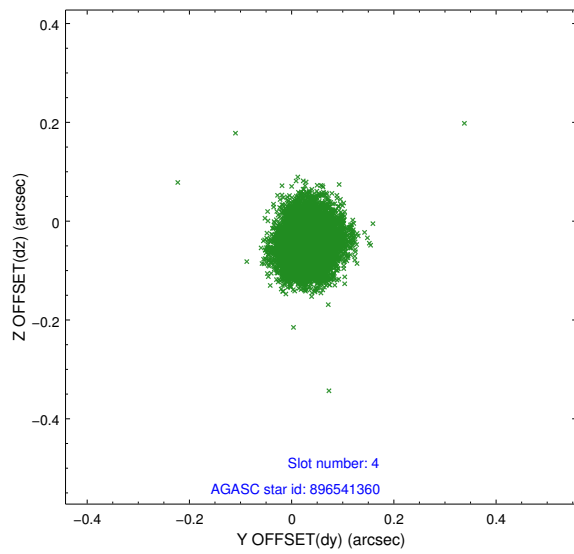
∞

2.4 Star Slots

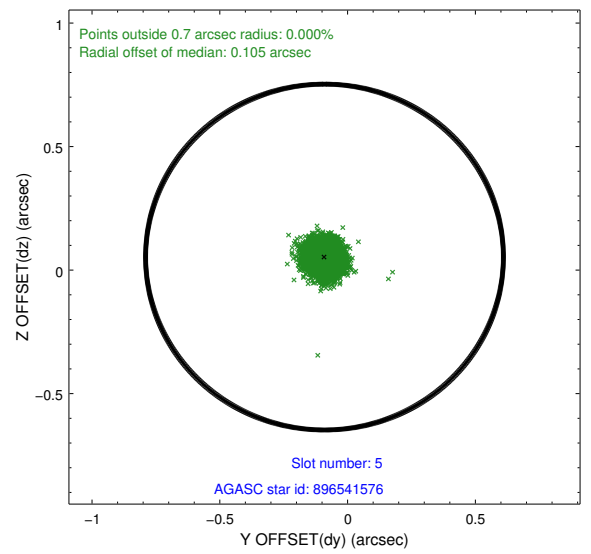
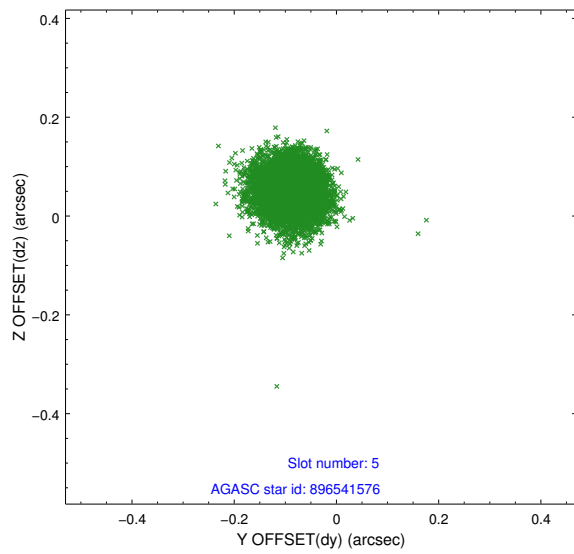
2.4.1 Slot 3



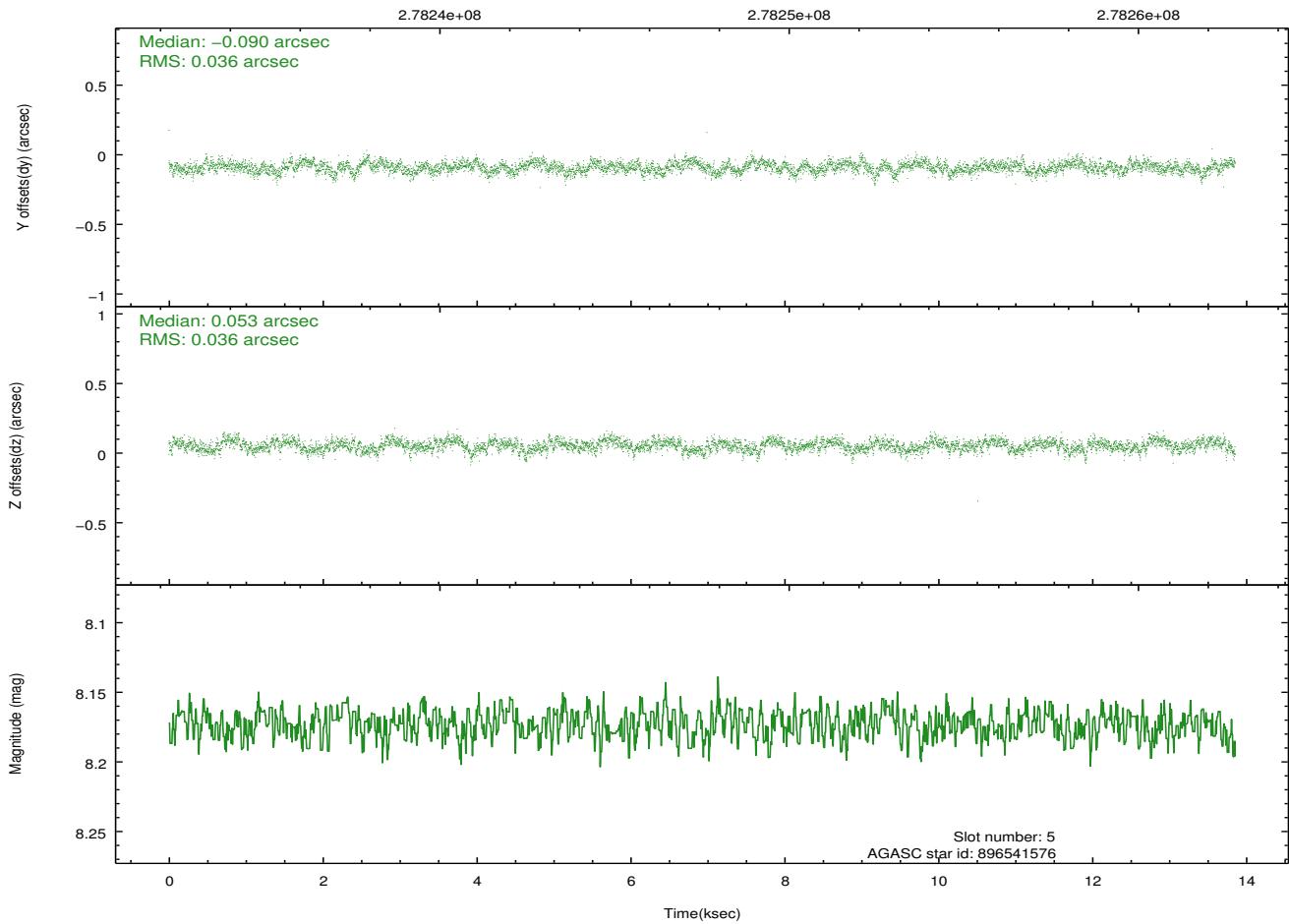
2.4.2 Slot 4



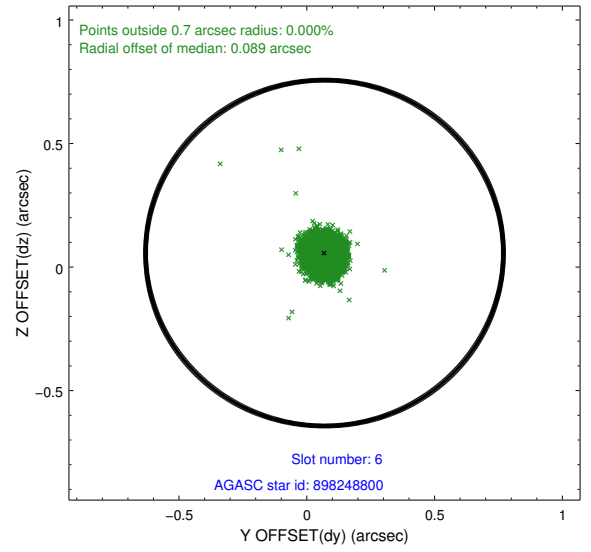
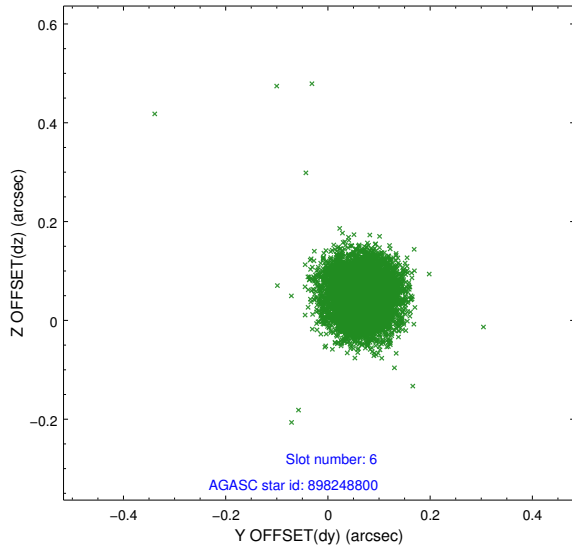
2.4.3 Slot 5



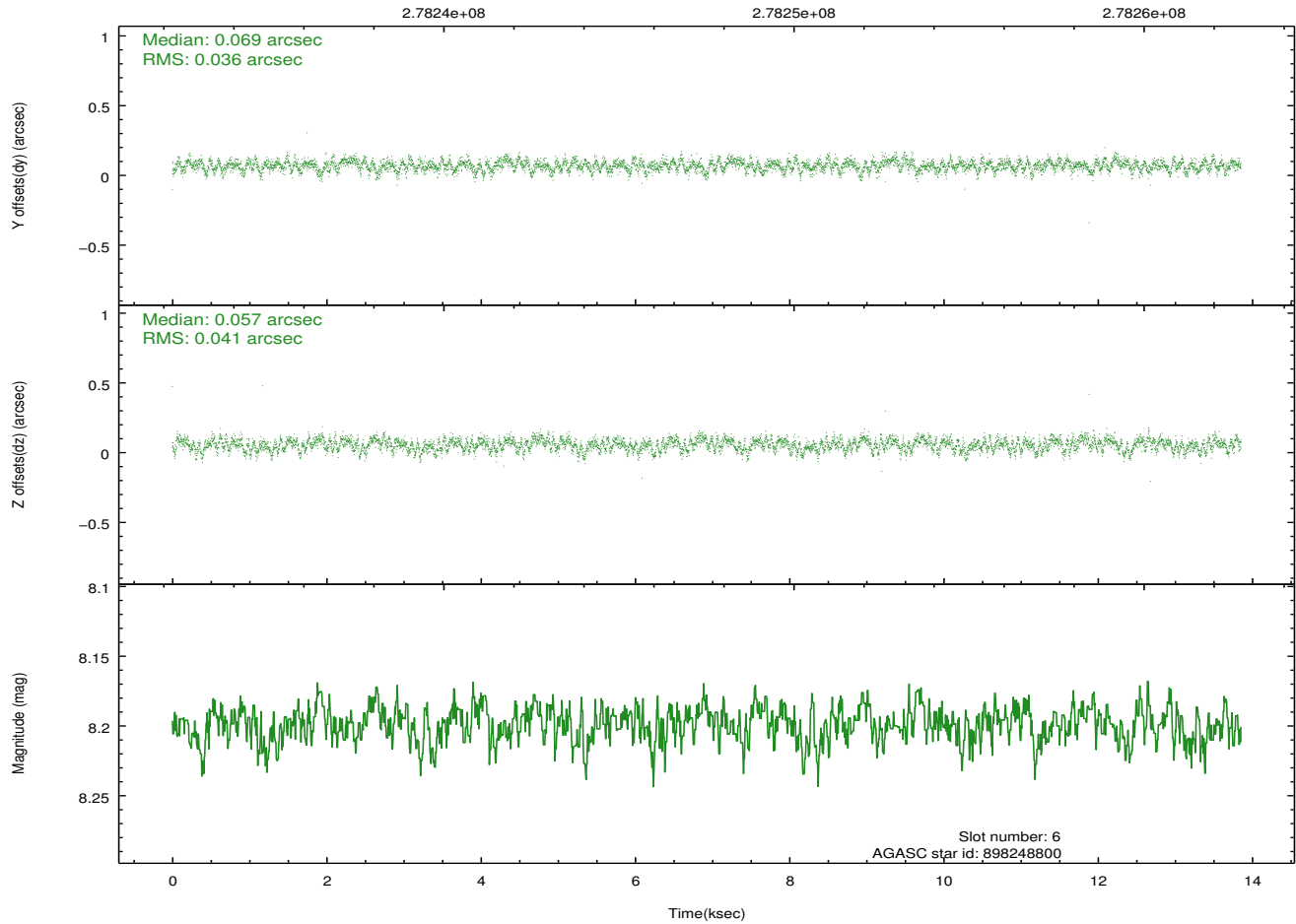
Time (s)



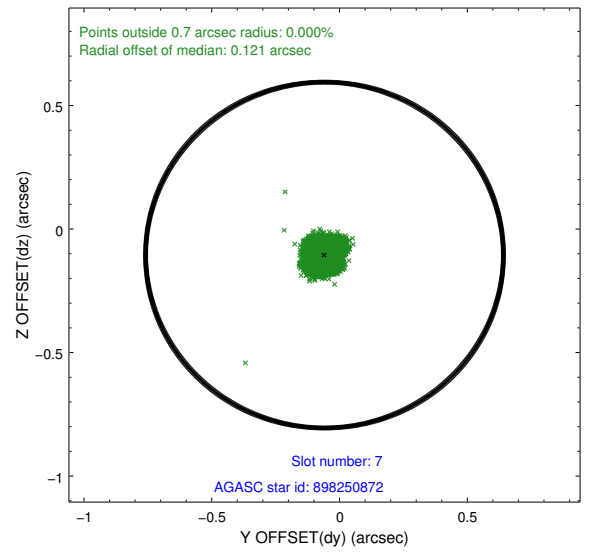
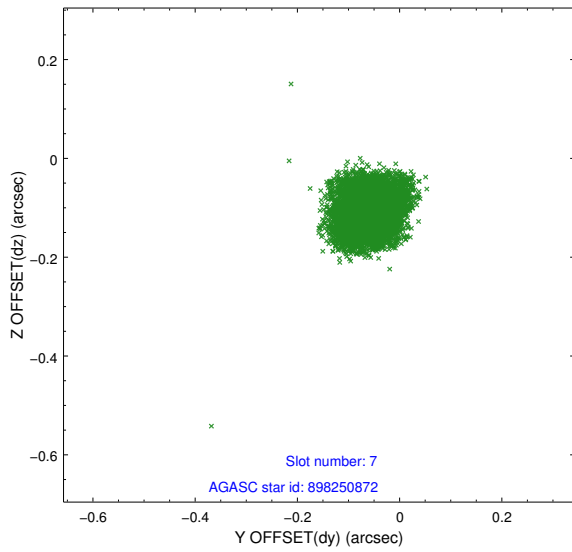
2.4.4 Slot 6



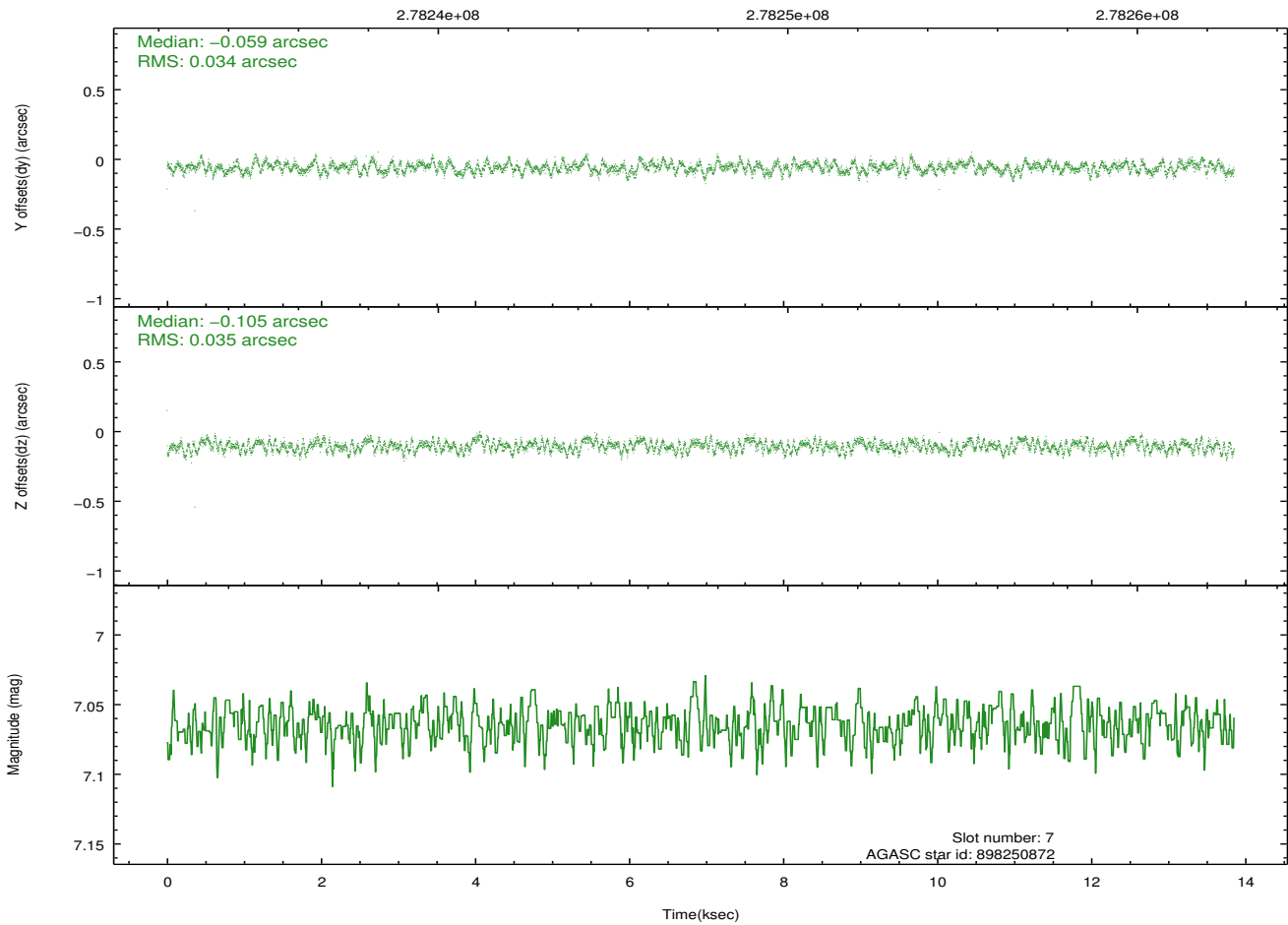
Time (s)



2.4.5 Slot 7

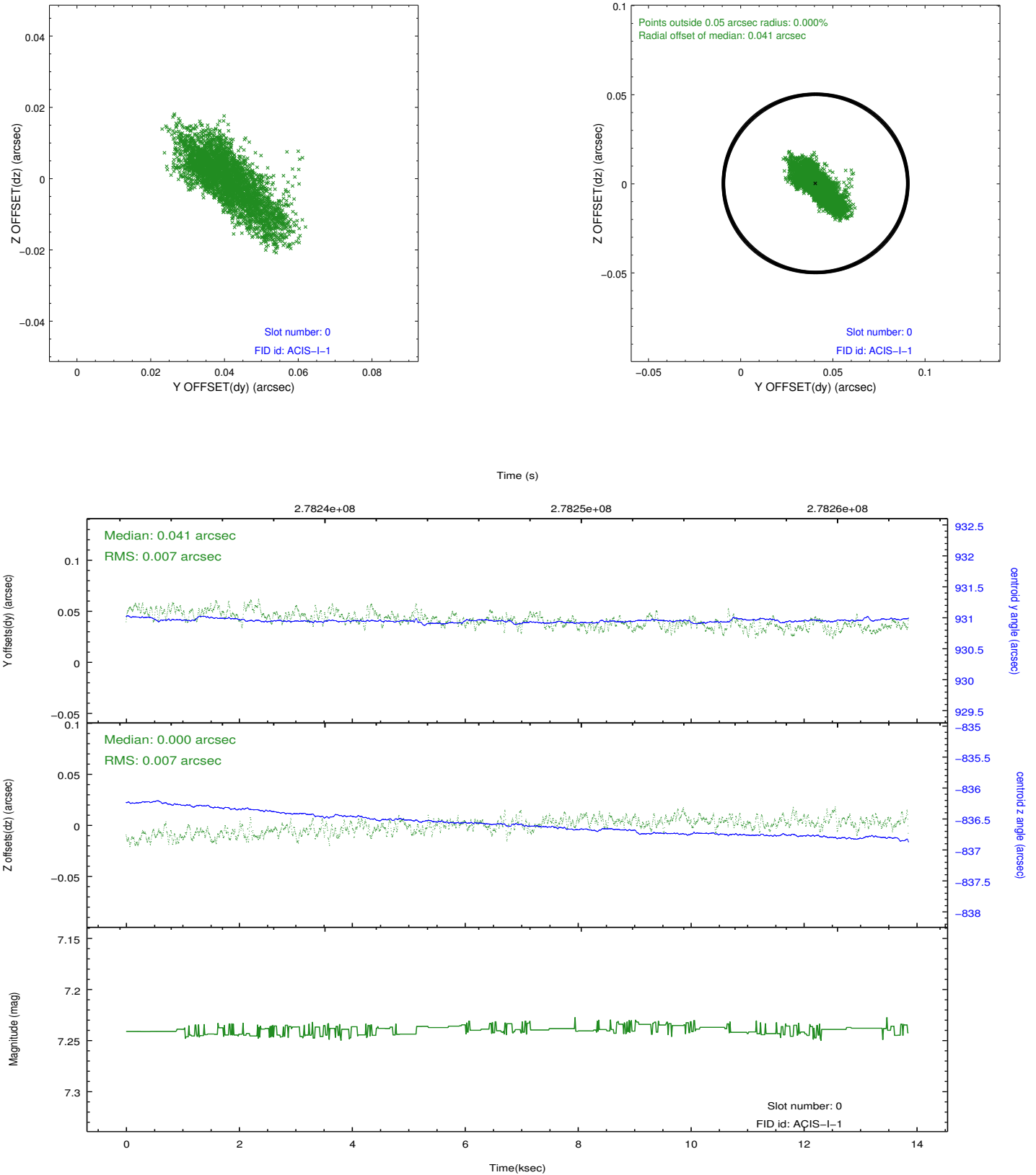


Time (s)

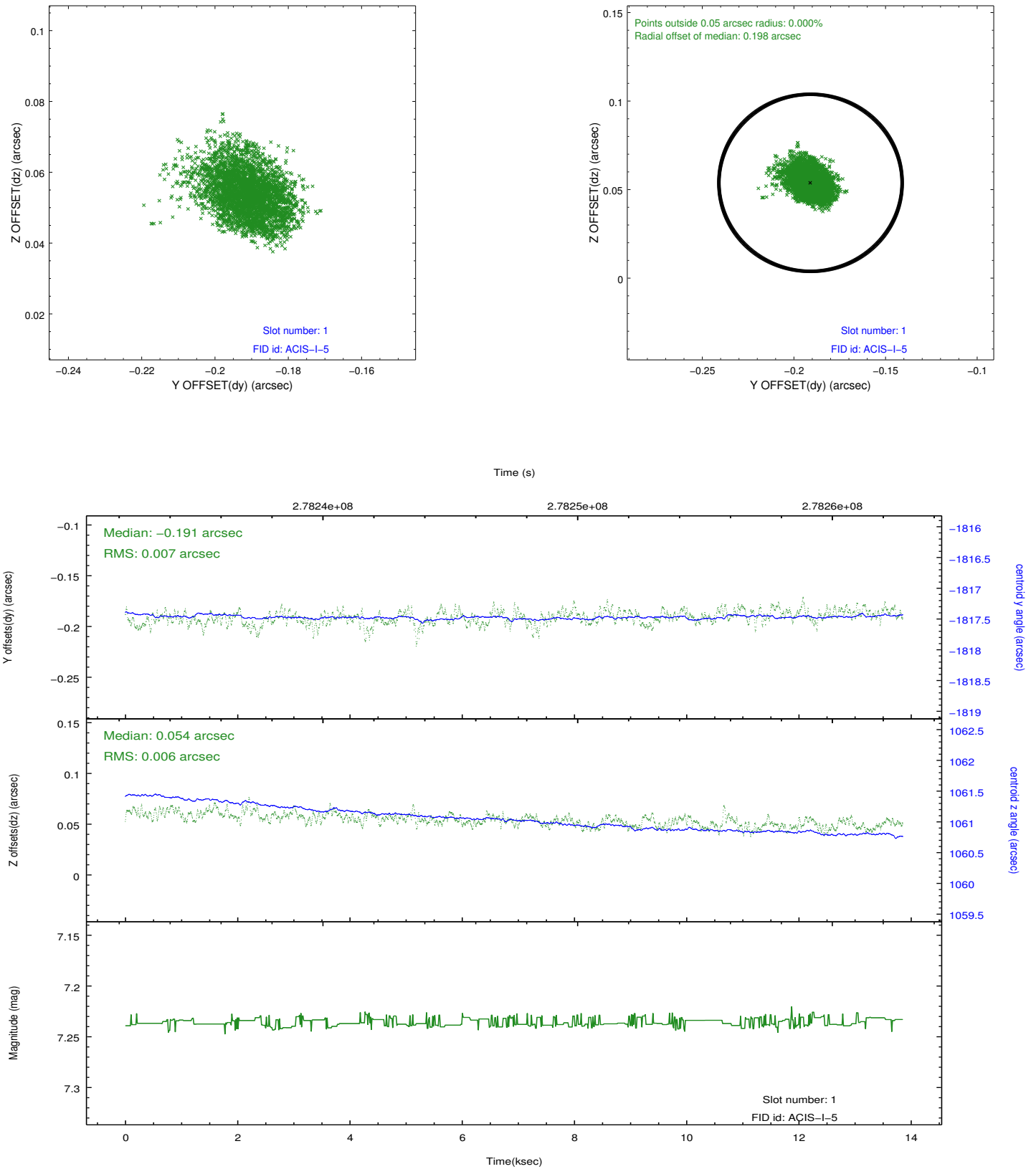


2.5 FID Slots

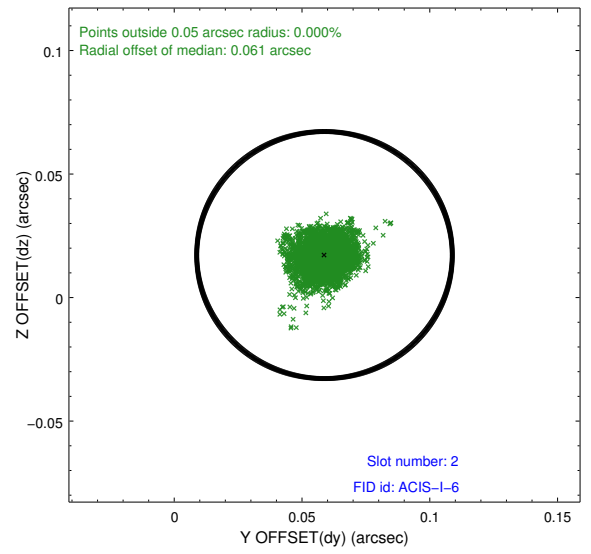
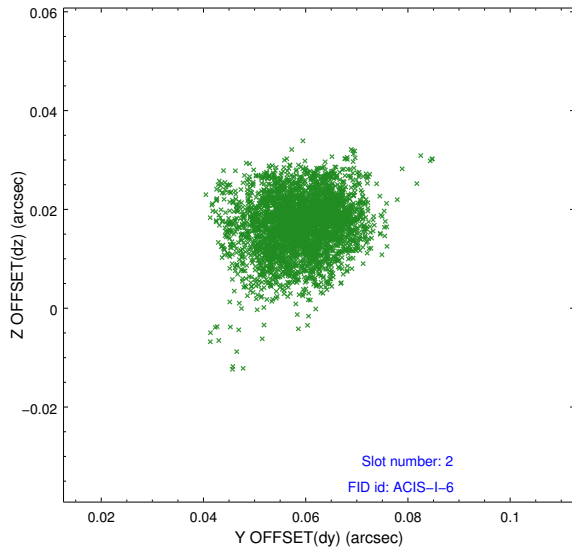
2.5.1 Slot 0



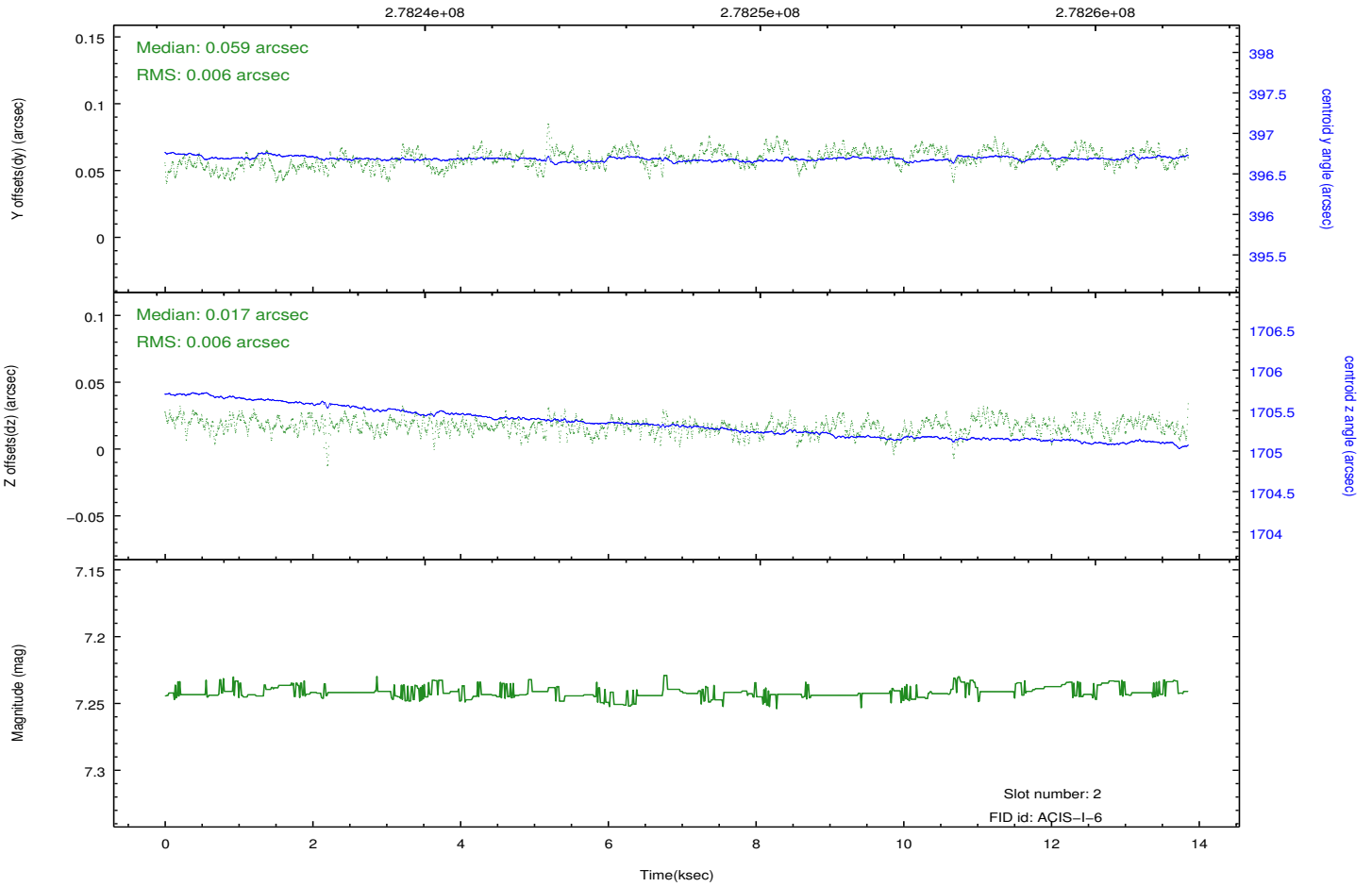
2.5.2 Slot 1



2.5.3 Slot 2



Time (s)



A Summary

A.1 Status

V&V Scientist	Jen Lauer
V&V Date (YYYY-MM-DD)	2012.04.12
V&V Edition	1
V&V Disposition and Status	OK
V&V Charge Time	13.4633001

A.2 Comments

Preferred roll angle request of 283 +/- 10 degrees not met. Roll angle is 265.6 degrees.