

V&V Reference Report

L2 ASCDS Version : 8.5.1.1

Observation 7196 - L2 Version 3
Chandra X-Ray Center

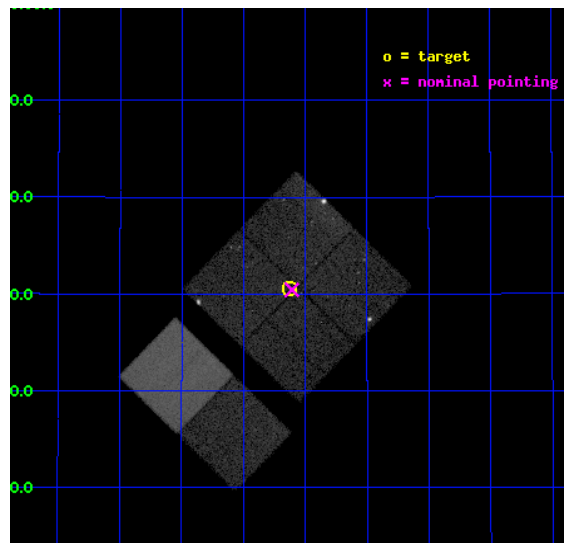
L2 Processing Date : Dec 31 2012

Contents

1	Front	2
2	OBI	3
2.1	OBI	3
2.1.1	Images	3
2.1.2	Bias	3
2.1.3	Parameters	4
2.1.4	Events	4
2.2	Compared Parameters	5
2.3	Aspect	6
2.4	Star Slots	9
2.4.1	Slot 3	9
2.4.2	Slot 4	10
2.4.3	Slot 5	11
2.4.4	Slot 6	12
2.4.5	Slot 7	13
2.5	FID Slots	14
2.5.1	Slot 0	14
2.5.2	Slot 1	15
2.5.3	Slot 2	16
A	Summary	17
A.1	Status	17
A.2	Comments	17

1 Front

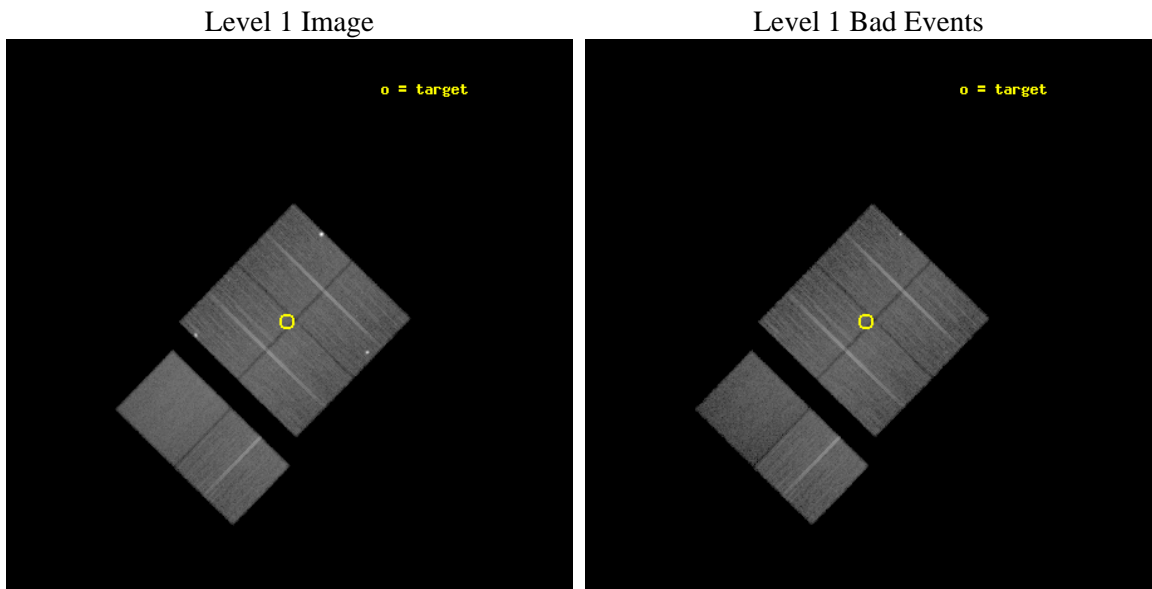
seq_num	600488	Sequence number
obs_id	7196	Observation id
title	The Chandra ACIS Survey of M33 (ChASem33): A Deep Survey of the Nearest Face-on Spiral Galaxy	Proposal title
observer	Dr Manami Sasaki	Principal investigator
object	M33 Field 6	Source name
dtcycle	0	
cycle	P	events from which exps? Prim/Second/Both
ra_targ	23.532083	Observer's specified target RA [deg]
dec_targ	30.509111	Observer's specified target Dec [deg]
ra_nom	23.527059208673	Nominal RA [deg]
dec_nom	30.507404370912	Nominal Dec [deg]
roll_nom	224.21123602206	Nominal Roll [deg]
revision	3	Processing version of data
ontime	23049.599914134	Sum of GTIs [s]
livetime	22757.732001218	Livetime [s]
ontime0	23049.599914134	Sum of GTIs [s]
ontime1	23049.599914134	Sum of GTIs [s]
ontime2	23036.636002779	Sum of GTIs [s]
ontime3	23049.599914134	Sum of GTIs [s]
ontime6	23049.599914134	Sum of GTIs [s]
ontime7	23049.599914134	Sum of GTIs [s]
l2events	162436	Number of level 2 events



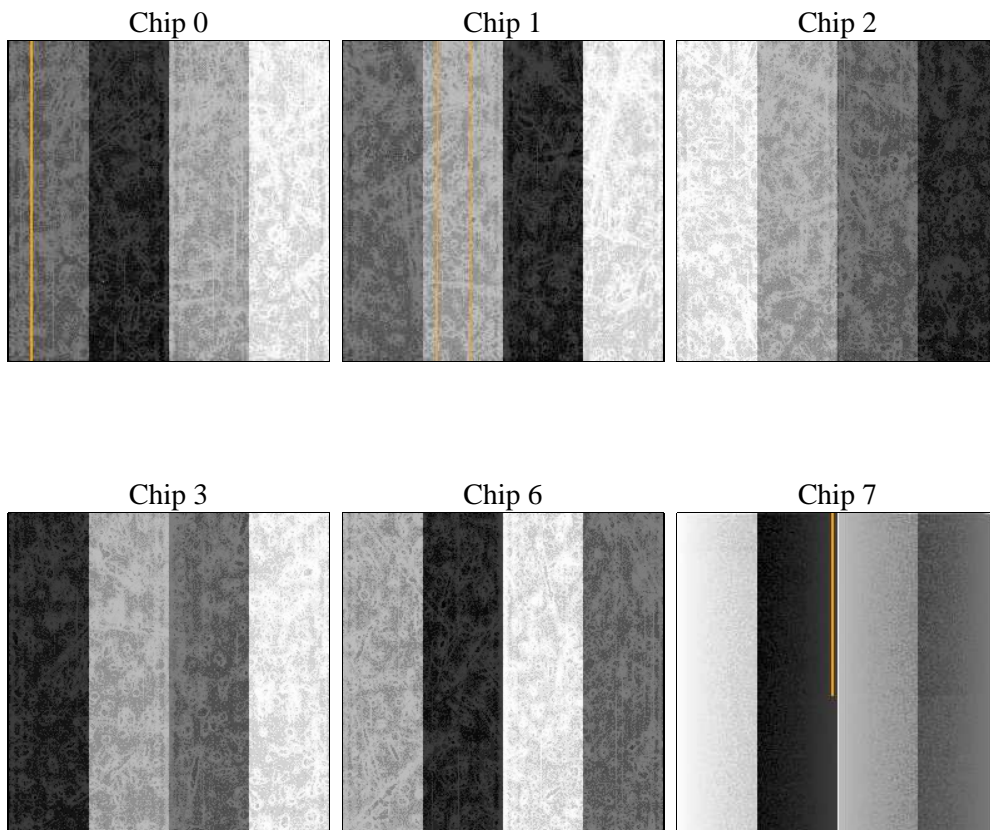
2 OBI

2.1 OBI

2.1.1 Images



2.1.2 Bias



2.1.3 Parameters

obi_num	0	Obi number	sched_exp_time	23000.000000	[s] Scheduled observation exposure time
ascdsver	8.5.1.1	Processing system revision	ontime	23049.599914134	Sum of GTIs [s]
caldsver	4.5.5	 	ontime0	23049.599914134	Sum of GTIs [s]
date	2012-12-31T10:00:27	Date and time of file creation	ontime1	23049.599914134	Sum of GTIs [s]
revision	3	Processing version of data	ontime2	23036.636002779	Sum of GTIs [s]
			ontime3	23049.599914134	Sum of GTIs [s]
			ontime6	23049.599914134	Sum of GTIs [s]
			ontime7	23049.599914134	Sum of GTIs [s]
			l1events	951116	Number of level 1 events

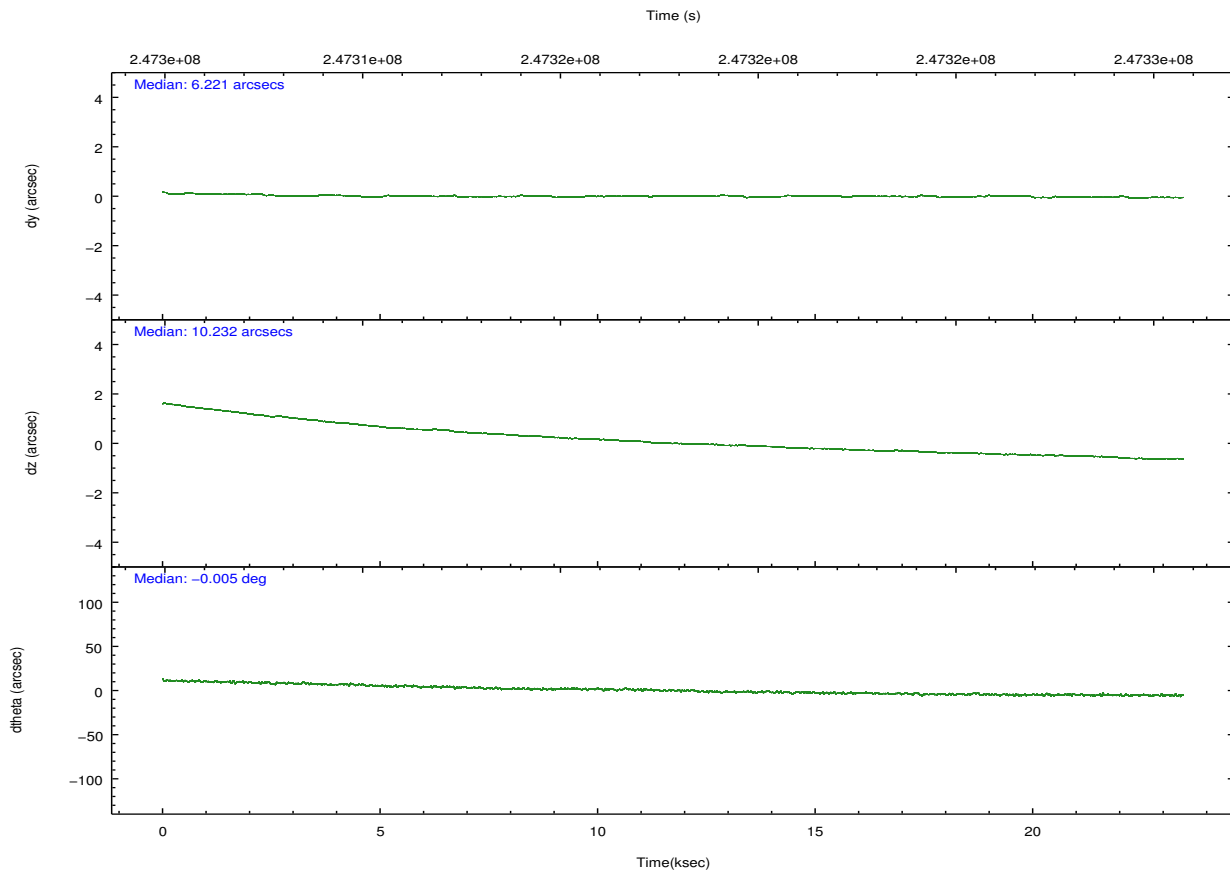
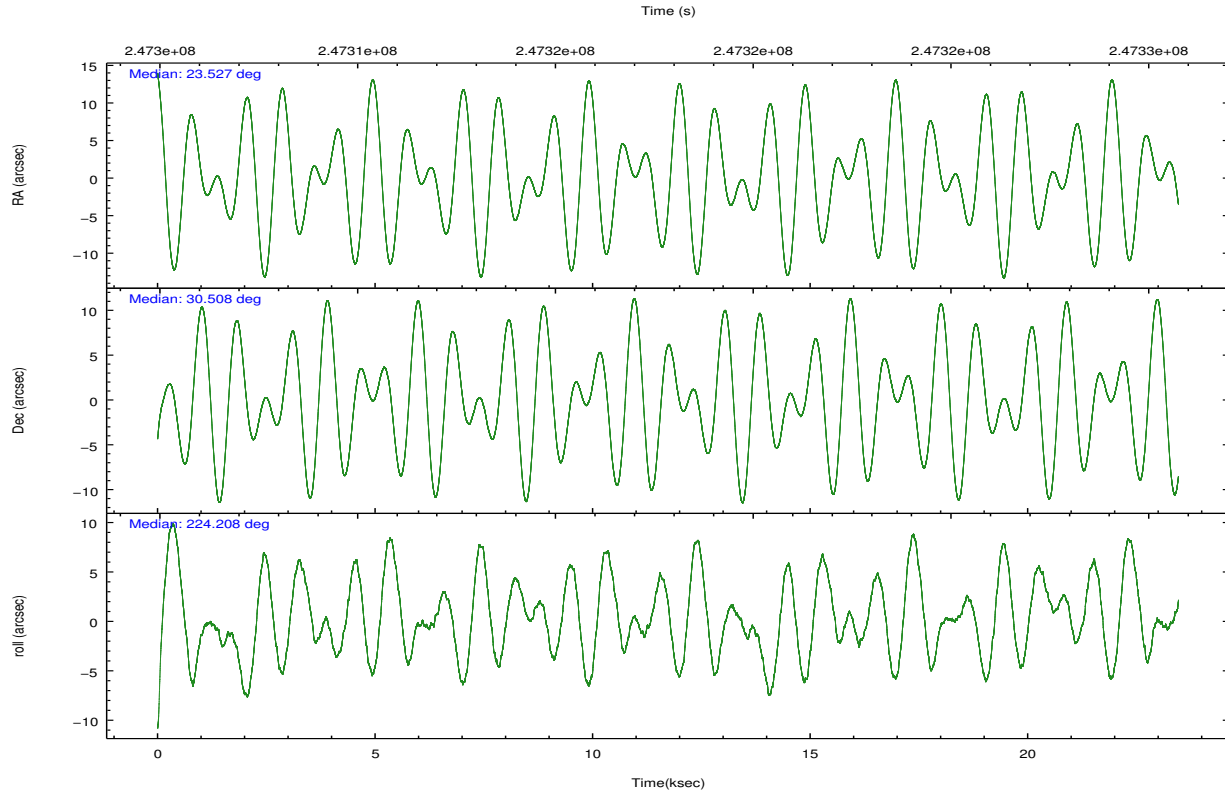
2.1.4 Events

	ccd 0	ccd 1	ccd 2	ccd 3	ccd 6	ccd 7		ccd 0	ccd 1	ccd 2	ccd 3	ccd 6	ccd 7
level 1 events	147155	162804	158721	155739	157463	169234	grade 0 events	9381	23135	5149	8402	5251	6079
rejected events	126924	124290	144262	137214	141889	94453		6%	14%	3%	5%	3%	3%
rejected %	86%	76%	90%	88%	90%	55%	grade 1 events	107	399	99	104	75	136
								0%	0%	0%	0%	0%	0%
							grade 2 events	4133	6113	3396	3541	3404	14837
								2%	3%	2%	2%	2%	8%
							grade 3 events	1998	2586	1568	1798	1760	6935
								1%	1%	0%	1%	1%	4%
							grade 4 events	1765	2600	1630	1773	1745	6860
								1%	1%	1%	1%	1%	4%
							grade 5 events	5113	6057	4776	6160	6224	18071
								3%	3%	3%	3%	3%	10%
							grade 6 events	2957	4086	2718	3012	3414	40077
								2%	2%	1%	1%	2%	23%
							grade 7 events	121701	117828	139385	130949	135590	76239
								82%	72%	87%	84%	86%	45%

2.2 Compared Parameters

Parameter	Planned	Actual	Parameter	Planned	Actual
Instrument	ACIS	ACIS	Obspar format version number	7	7
Detector	ACIS-012367	ACIS-012367	Obspar file type	PREDICTED	ACTUAL
Grating	NONE	NONE	Obspar update status	NONE	UPDATED
Data mode	VFAINT	VFAINT	Number of optional ACIS chips dropped	0	0
Observation mode	POINTING	POINTING	On-chip summing requested	N	N
[deg] Pointing RA	23.535589	23.52705920867293	Subarray requested	NONE	NONE
[deg] Pointing Dec	30.533805	30.50740437091187	Alternating exposures requested	N	N
[deg] Pointing Roll	223.998215	224.2112360220627	[s] Primary exposure time	0.000000	3.2
[mm] SIM focus pos	-0.782348	-0.7809083437167272			
[mm] SIM defocus	0	0.001439871863259334			
[mm] SIM translation stage pos	-233.592463	-233.5874344608287			
[mm] SIM translation stage offset	0	-0.005018542100998502			
[s] Observation start time (MET)	247306579.184000	247305430.79016			
Observation start date	2005-11-02T08:15:15	2005-11-02T07:57:10			
[s] Observation end time (MET)	247329579.184000	247330284.4788			
Observation end date	2005-11-02T14:38:35	2005-11-02T14:51:24			
Read mode	TIMED	TIMED			

2.3 Aspect

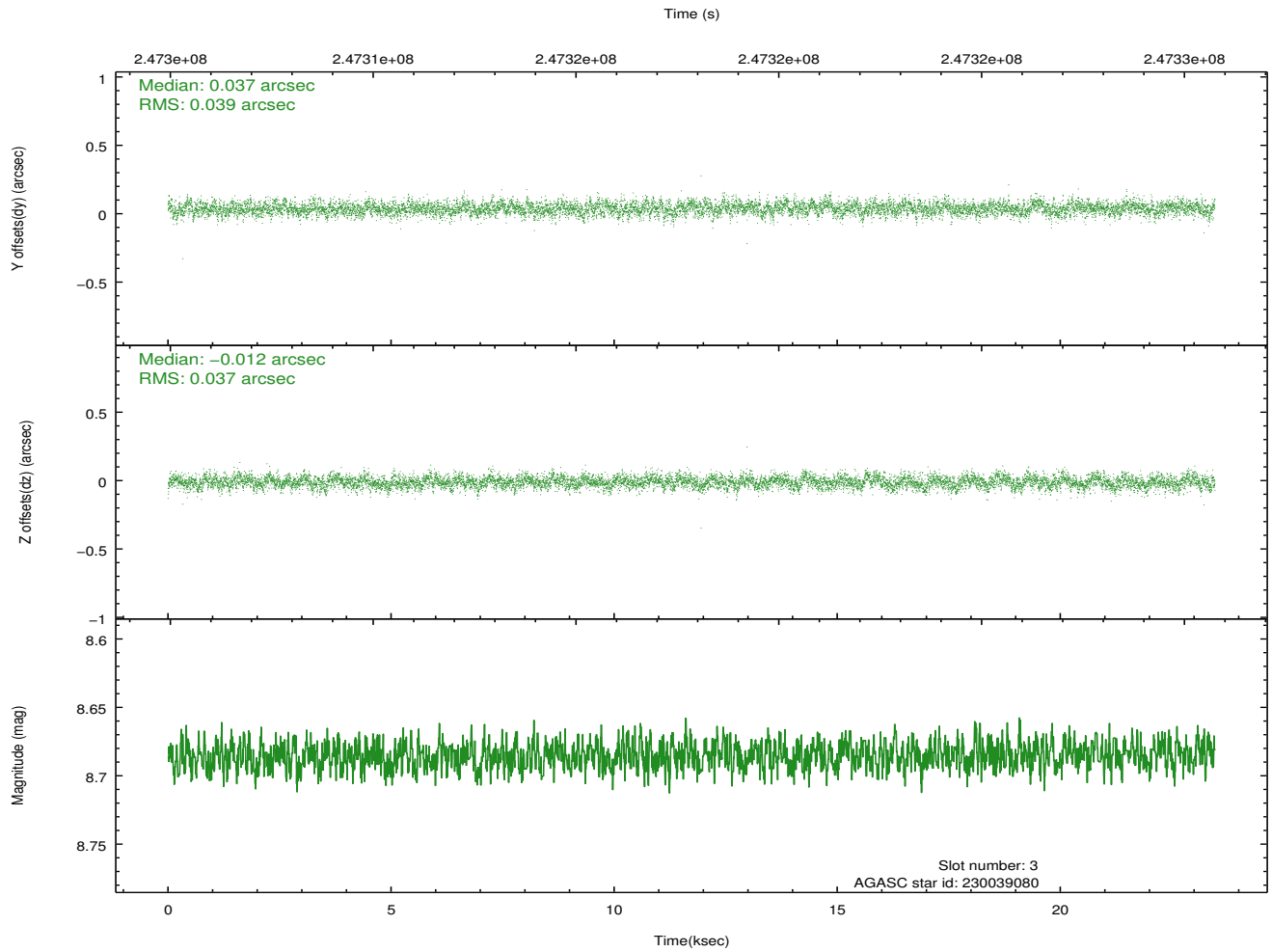
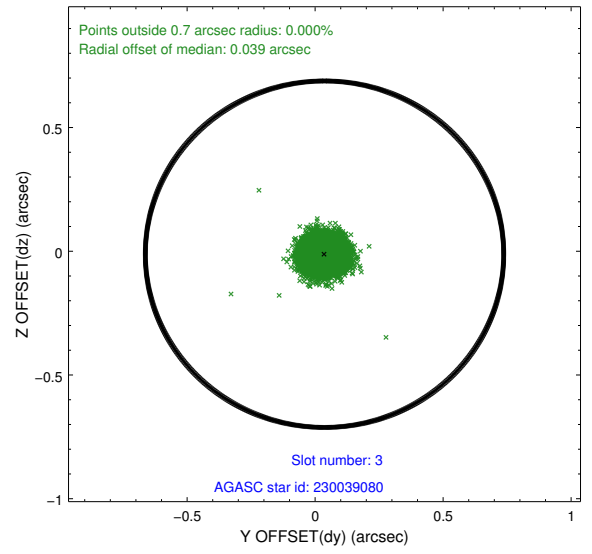
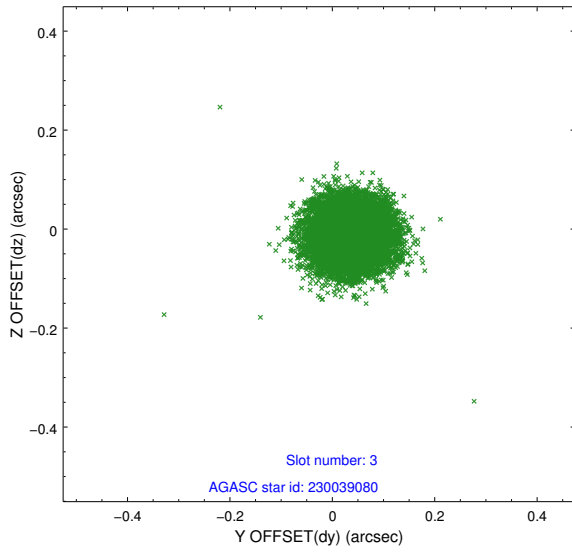


Slot Statistics

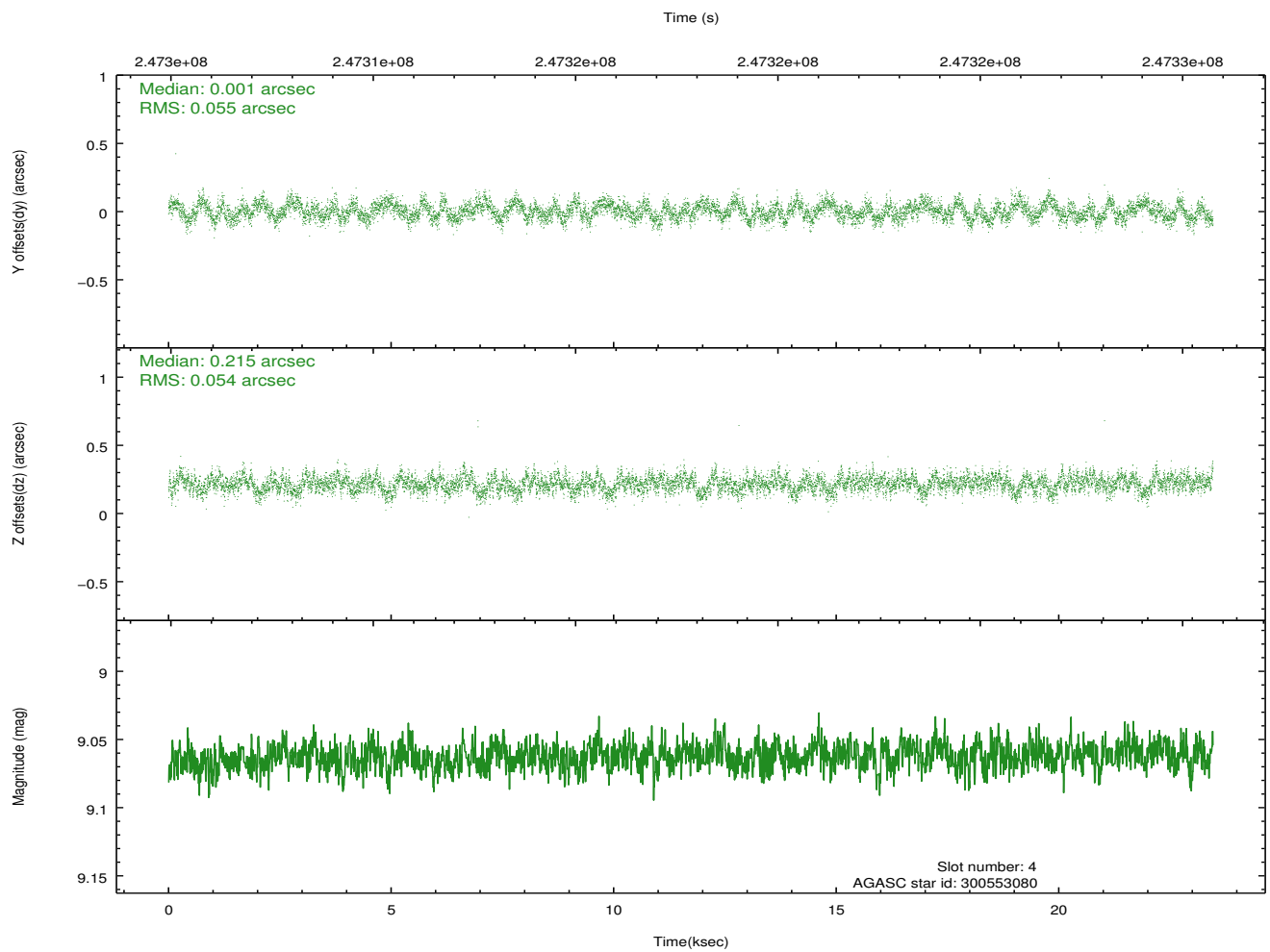
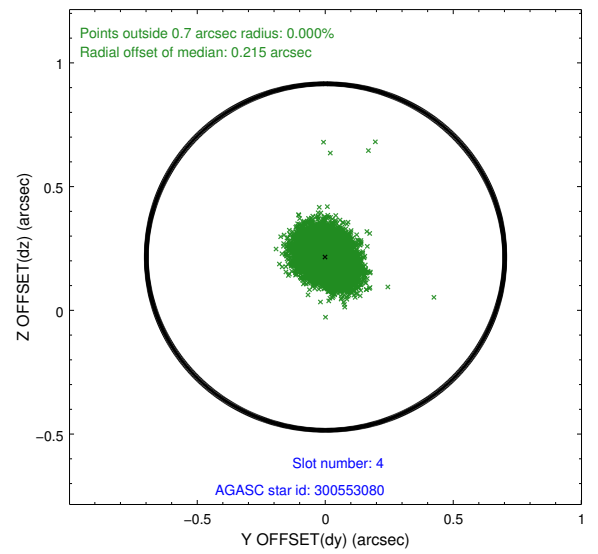
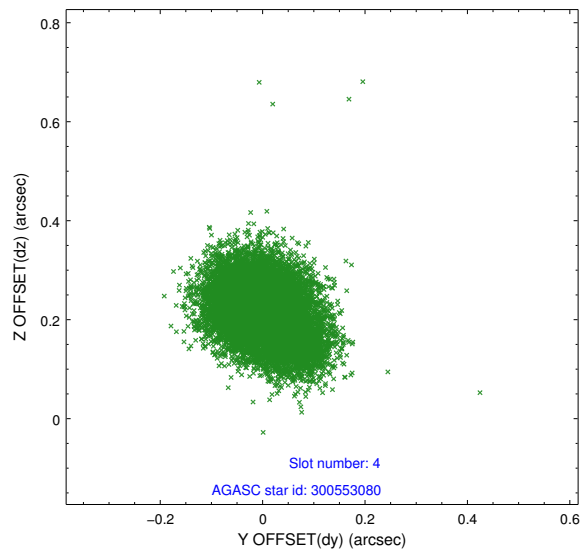
slot	status	id	mag	n_pts	med_dy	med_dz	dr1	dr2	ra	dec	mean_y	mean_z
0	FID	ACIS-I-1	7.25	5723	-0.003	0.013	0.010	0.016	0.000000	0.000000	933.52	-833.82
1	FID	ACIS-I-2	7.14	5723	-0.072	-0.015	0.016	0.032	0.000000	0.000000	-760.56	-840.44
2	FID	ACIS-I-6	7.25	5722	-0.016	0.070	0.019	0.030	0.000000	0.000000	398.96	1707.96
3	GUIDE	230039080	8.69	11439	0.037	-0.012	0.057	0.092	23.320866	29.887774	2097.45	1207.49
4	GUIDE	300553080	9.06	11441	0.001	0.215	0.083	0.133	23.777101	30.773227	-1136.23	-101.17
5	GUIDE	300559160	9.40	11409	0.029	-0.106	0.100	0.169	24.161026	30.632205	-1643.37	1087.18
6	GUIDE	300559832	7.87	11446	-0.014	-0.104	0.055	0.089	24.407732	30.552794	-1999.80	1821.65
7	GUIDE	300559960	7.88	11441	-0.052	0.011	0.063	0.100	22.944463	30.624765	1086.48	-1510.12

2.4 Star Slots

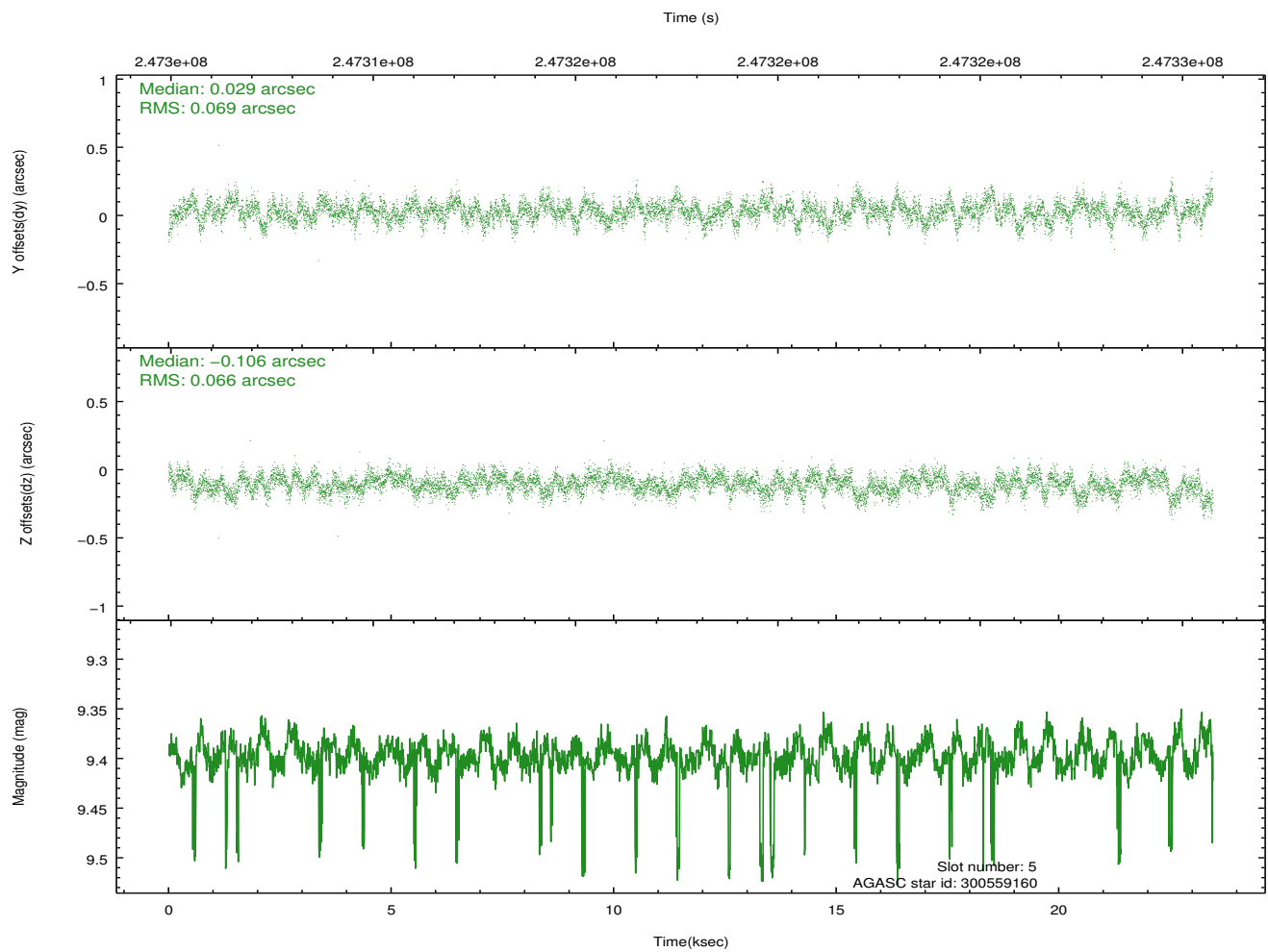
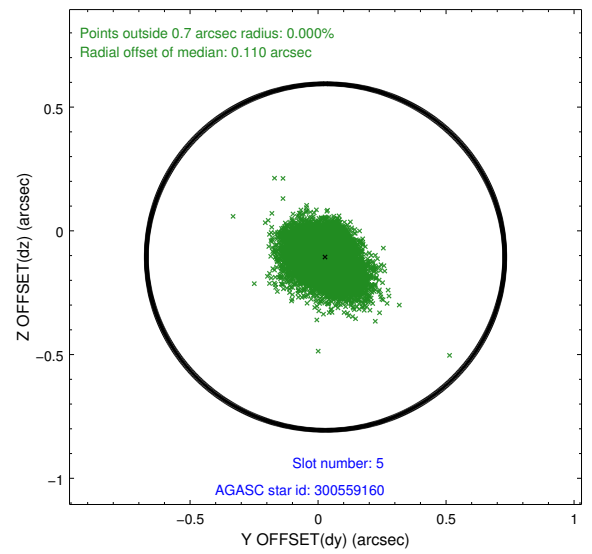
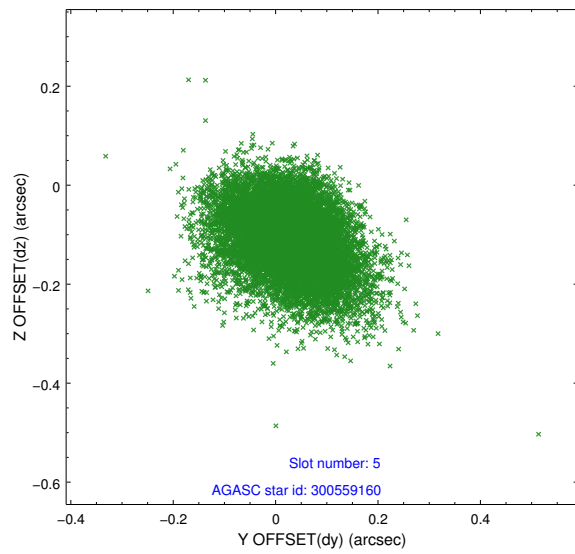
2.4.1 Slot 3



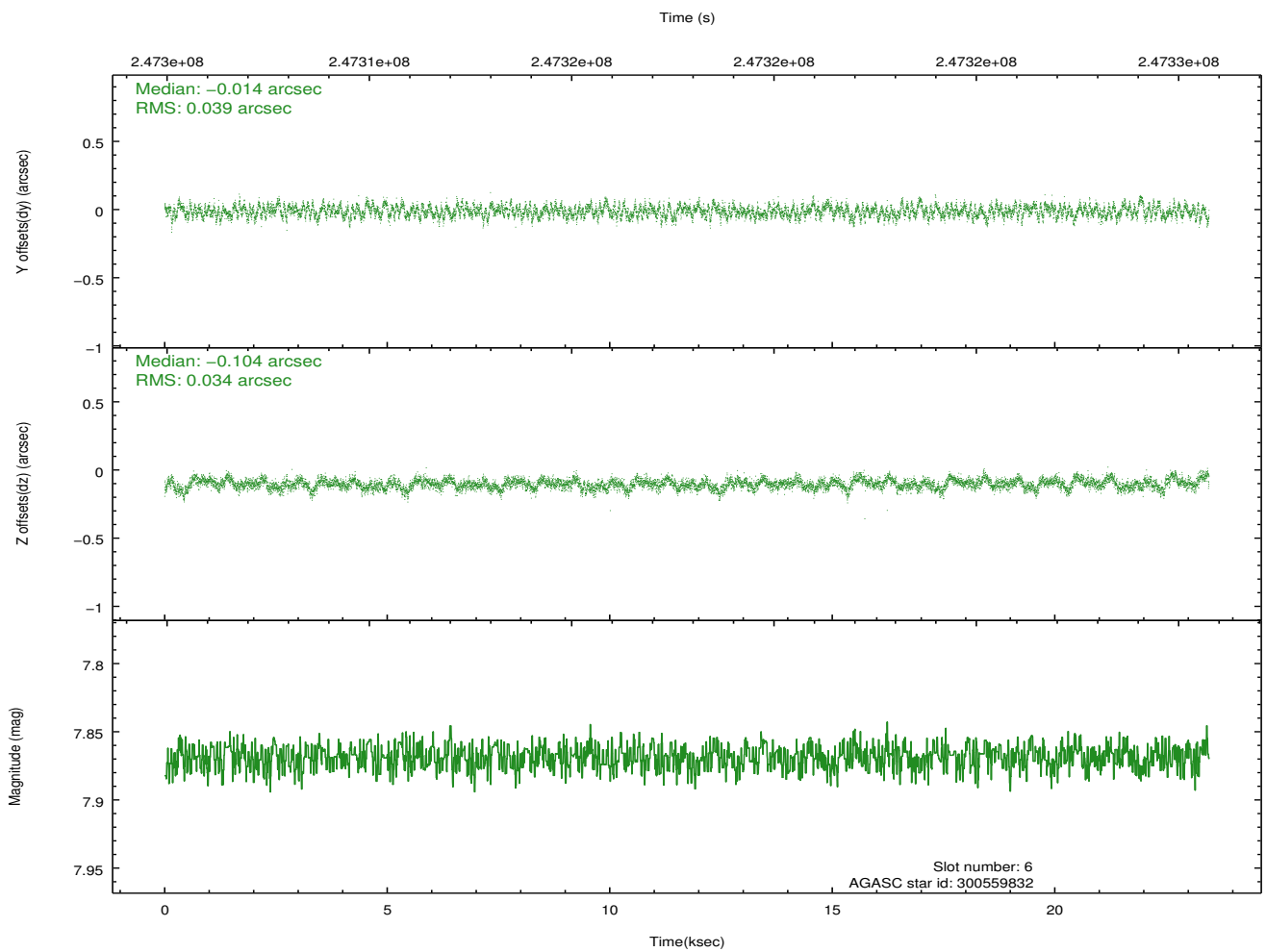
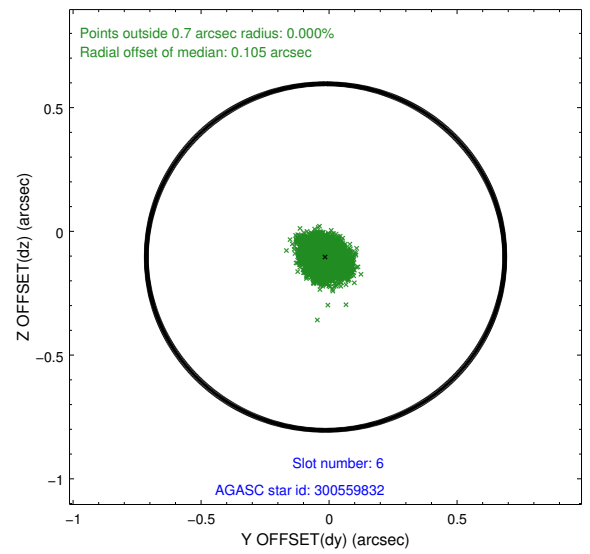
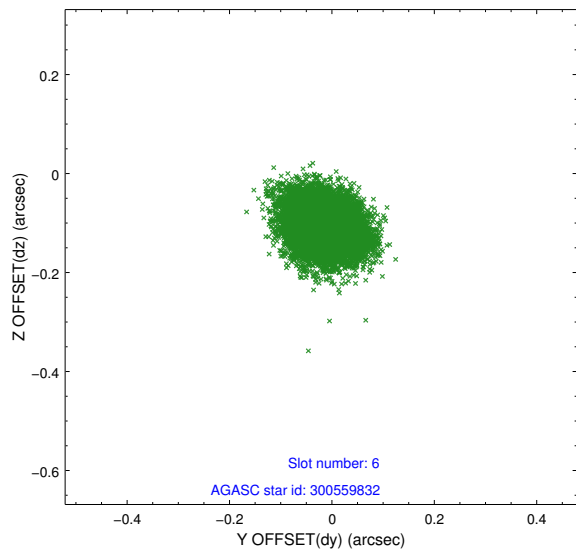
2.4.2 Slot 4



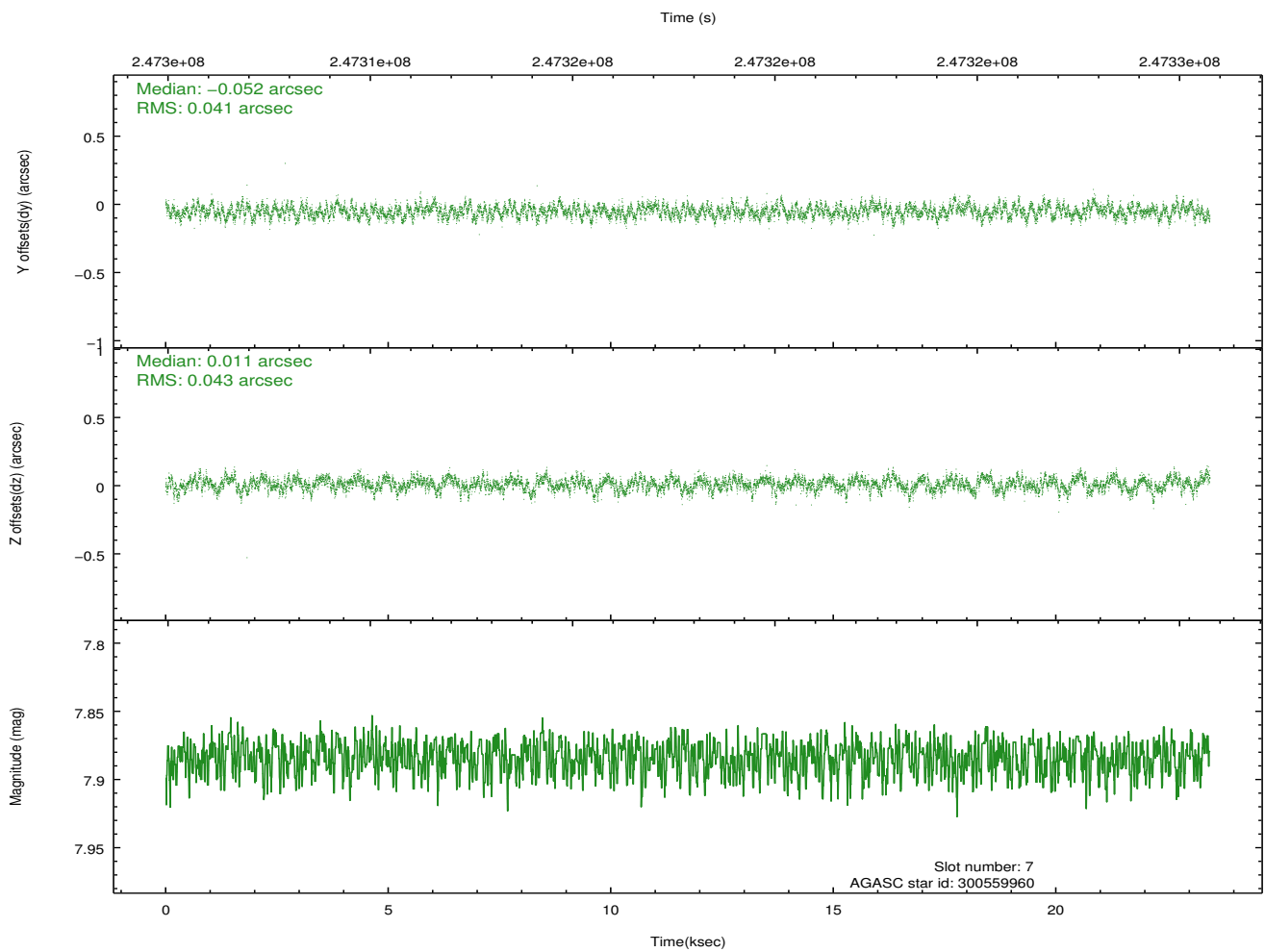
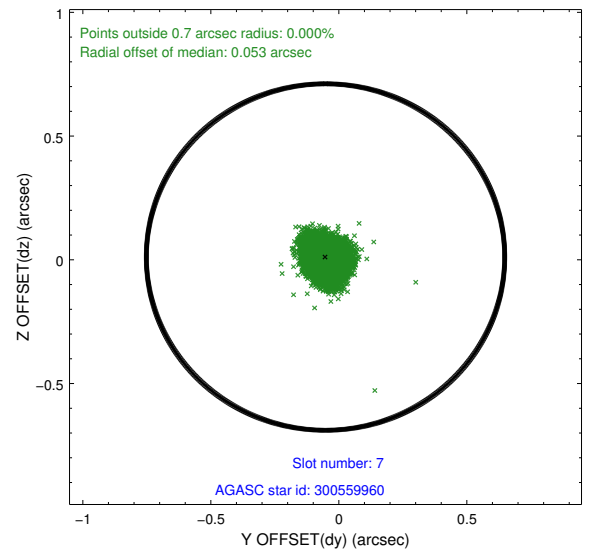
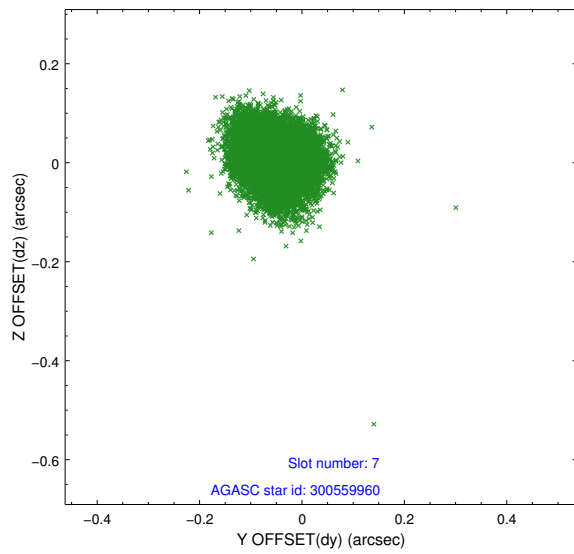
2.4.3 Slot 5



2.4.4 Slot 6

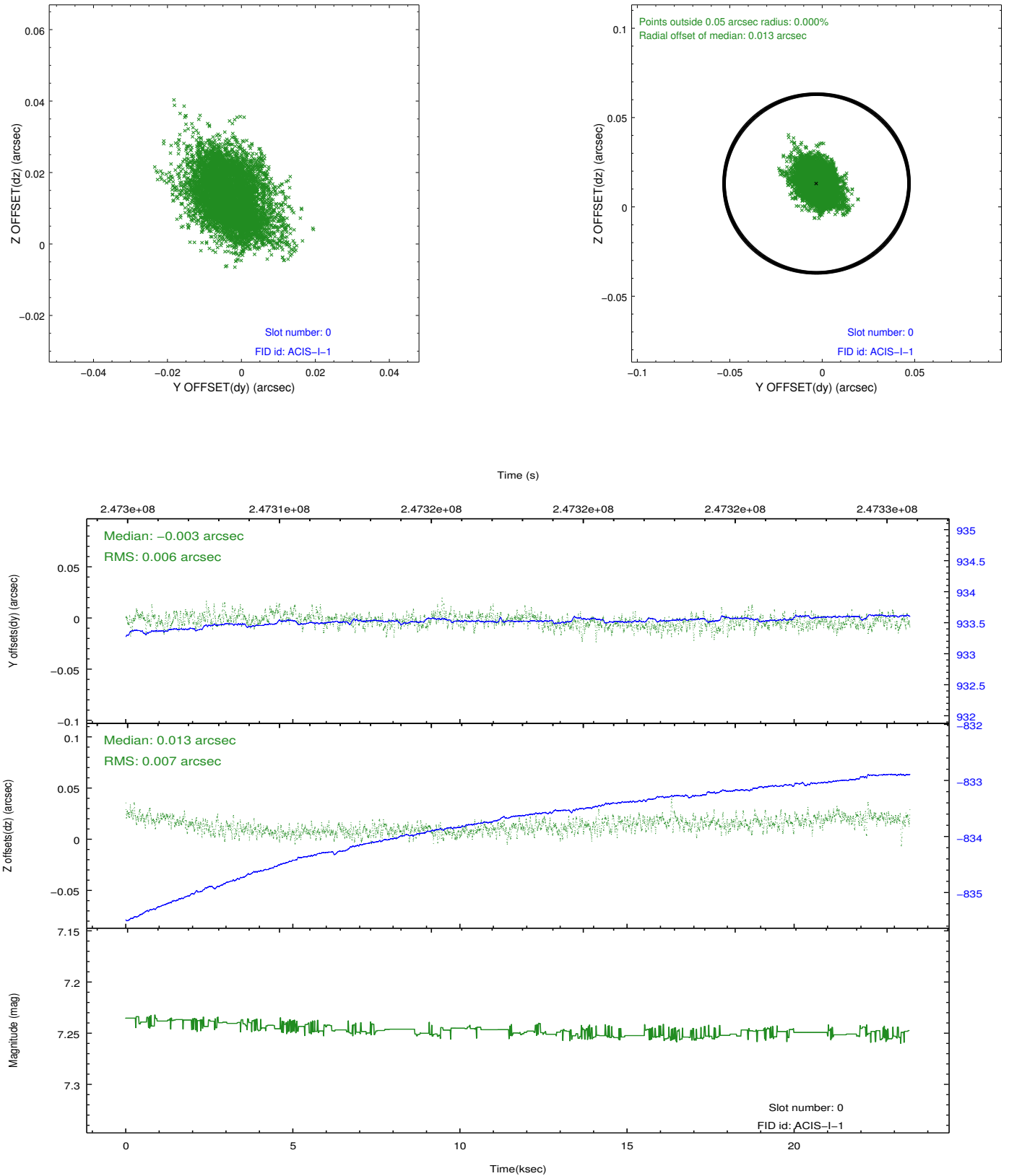


2.4.5 Slot 7

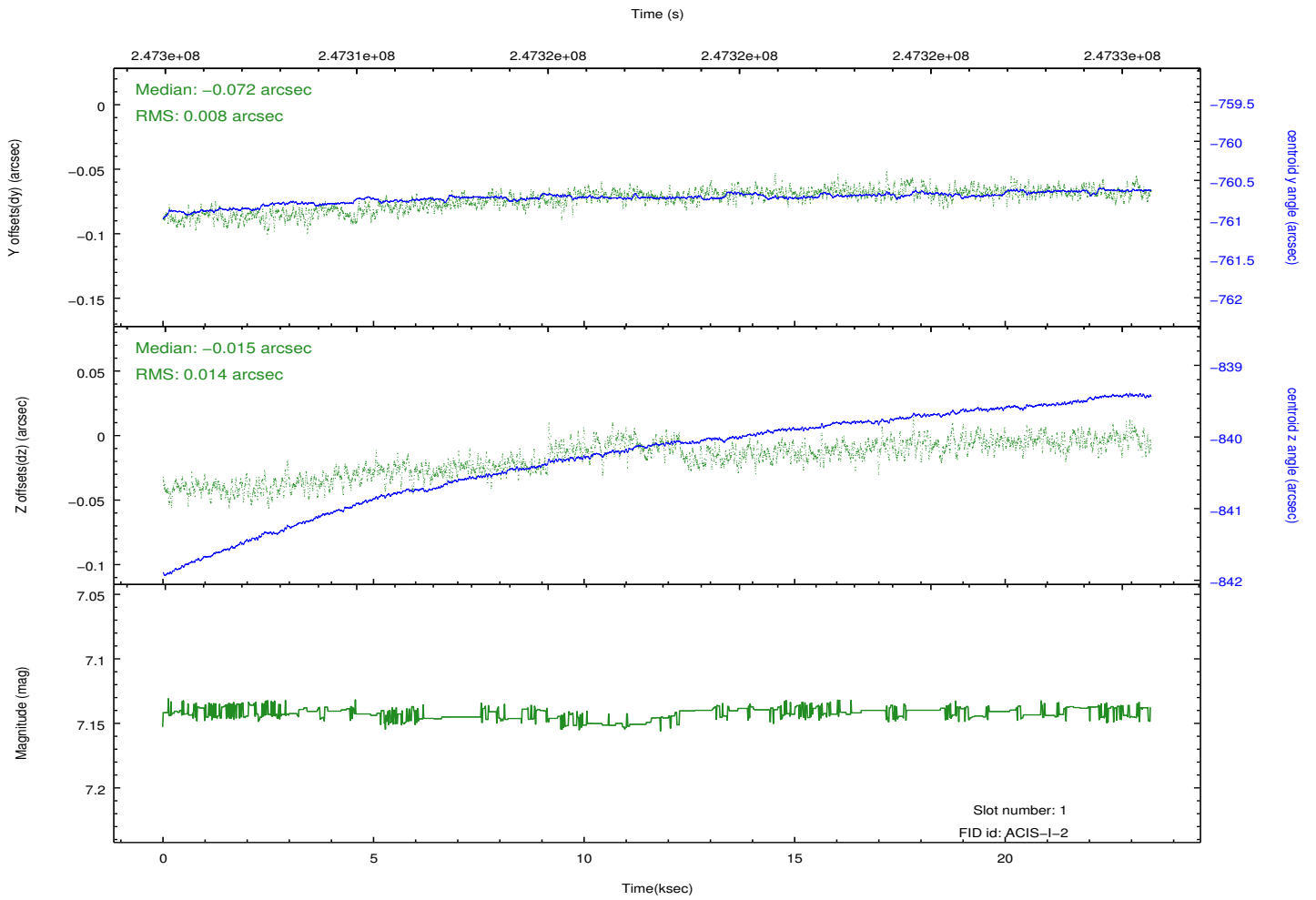
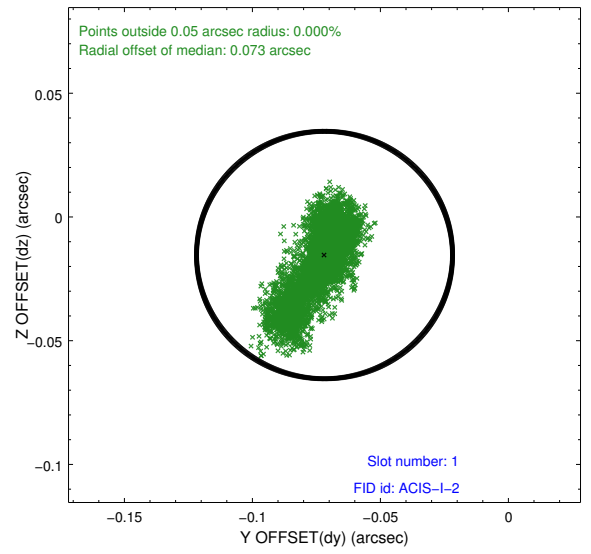
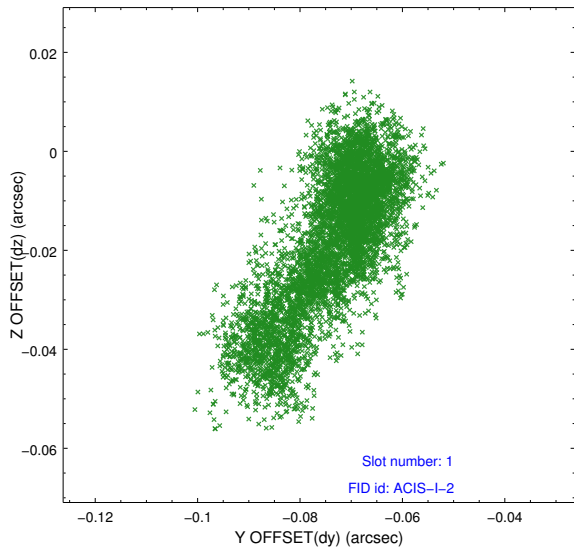


2.5 FID Slots

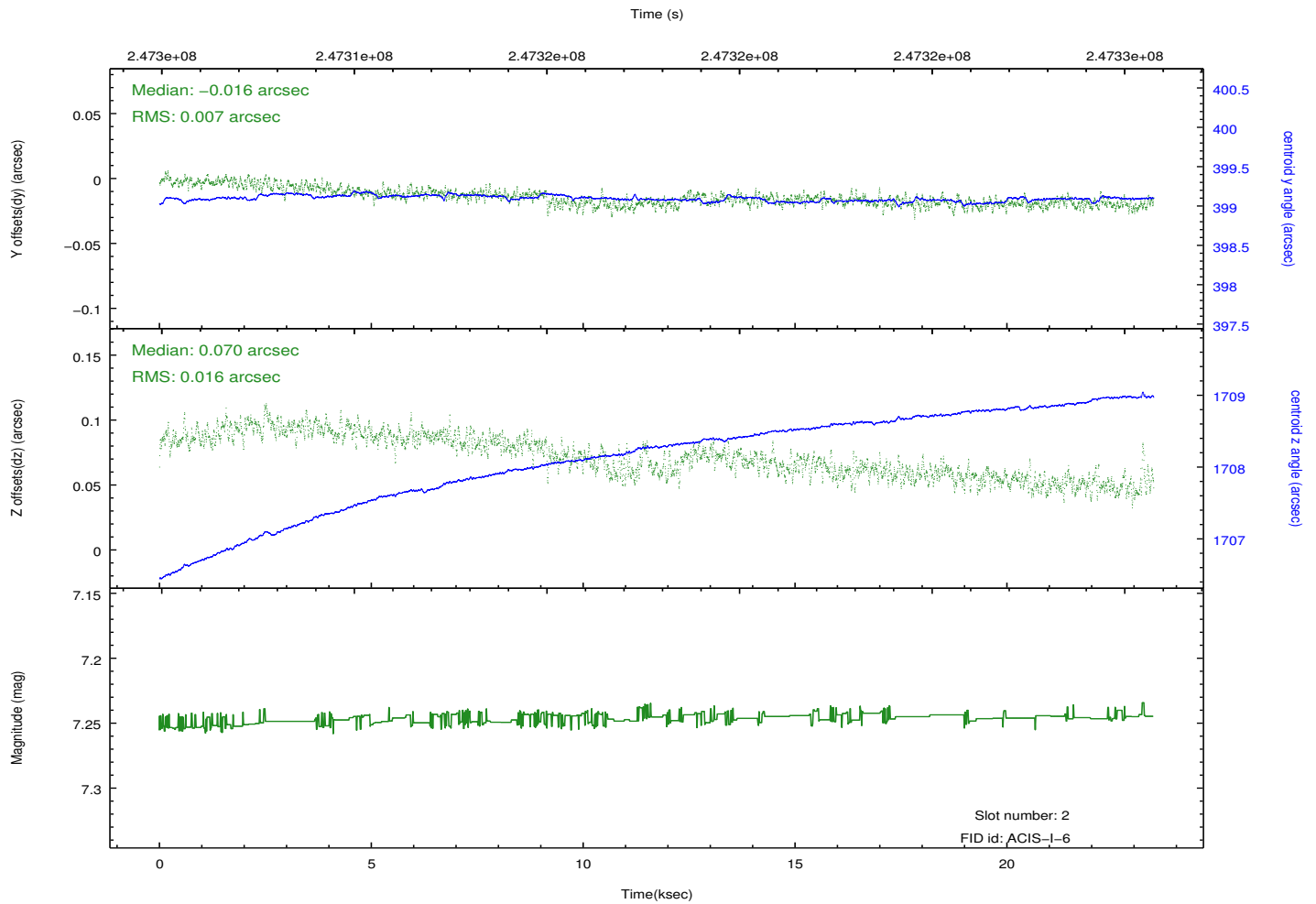
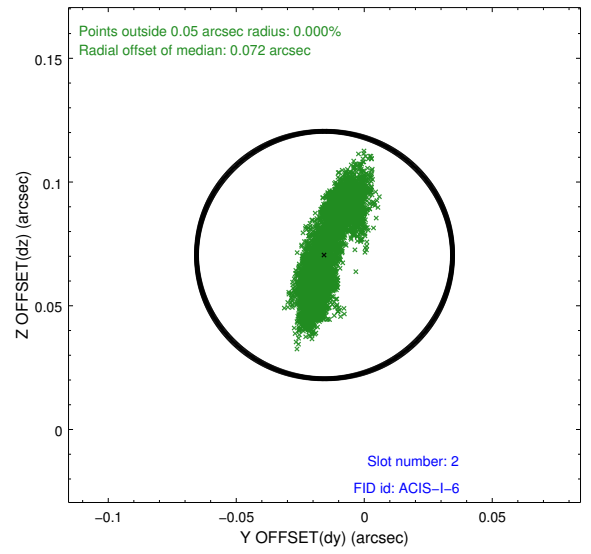
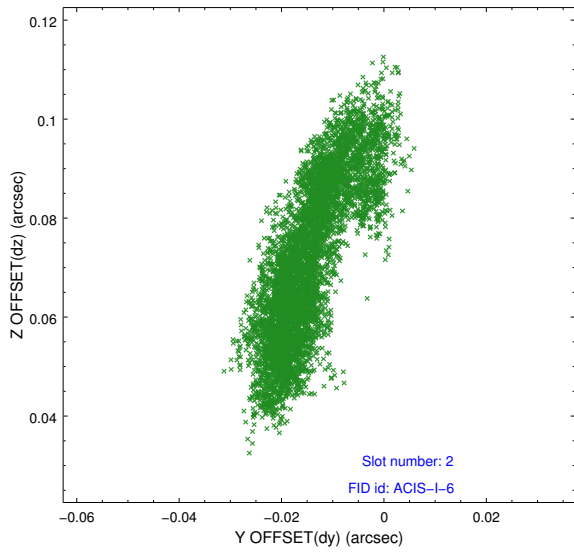
2.5.1 Slot 0



2.5.2 Slot 1



2.5.3 Slot 2



A Summary

A.1 Status

V&V Scientist	Jen Lauer
V&V Date (YYYY-MM-DD)	2013.01.28
V&V Edition	1
V&V Disposition and Status	OK
V&V Charge Time	23.04959

A.2 Comments

Roll preference met.