

V&V Reference Report

L2 ASCDS Version : 8.5.1.1

Observation 7206 - L2 Version 3
Chandra X-Ray Center

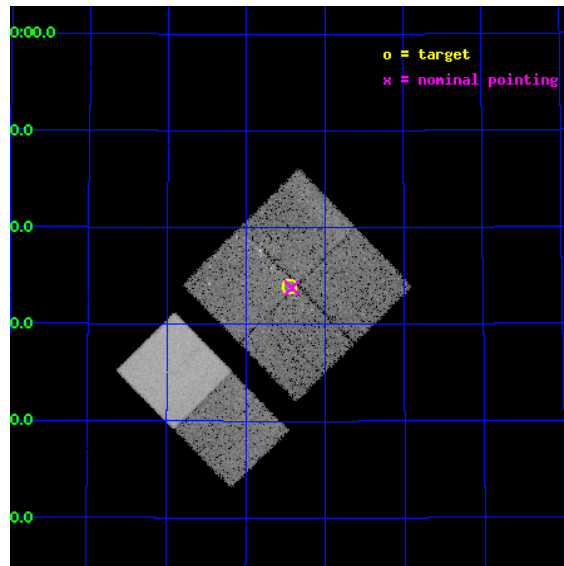
L2 Processing Date : Dec 31 2012

Contents

1	Front	2
2	OBI	3
2.1	OBI	3
2.1.1	Images	3
2.1.2	Bias	3
2.1.3	Parameters	4
2.1.4	Events	4
2.2	Compared Parameters	5
2.3	Aspect	6
2.4	Star Slots	9
2.4.1	Slot 3	9
2.4.2	Slot 4	10
2.4.3	Slot 5	11
2.4.4	Slot 6	12
2.4.5	Slot 7	13
2.5	FID Slots	14
2.5.1	Slot 0	14
2.5.2	Slot 1	15
2.5.3	Slot 2	16
A	Summary	17
A.1	Status	17
A.2	Comments	17

1 Front

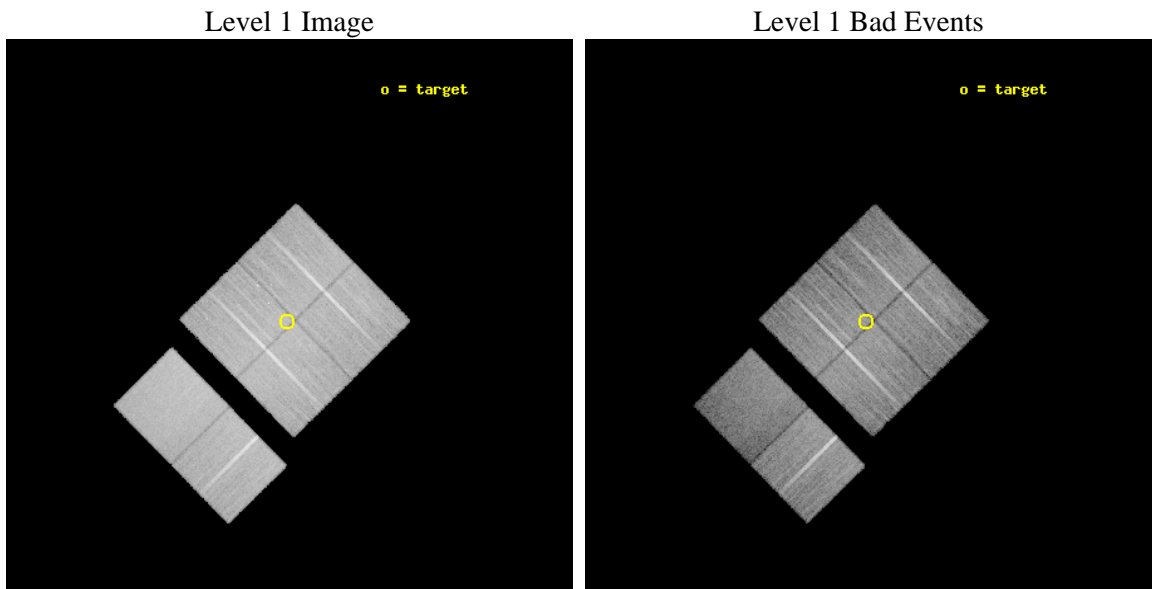
seq_num	200357	Sequence number
obs_id	7206	Observation id
title	The power within the PacMan Nebula: Triggered Star Formation in NGC 281	Proposal title
observer	Dr. Scott Wolk	Principal investigator
object	NGC 281	Source name
dtcycle	0	
cycle	P	events from which exps? Prim/Second/Both
ra_targ	13.112917	Observer's specified target RA [deg]
dec_targ	56.565	Observer's specified target Dec [deg]
ra_nom	13.105097560213	Nominal RA [deg]
dec_nom	56.563206410582	Nominal Dec [deg]
roll_nom	225.51522671253	Nominal Roll [deg]
revision	3	Processing version of data
ontime	23494.358902305	Sum of GTIs [s]
livetime	23196.85918328	Livetime [s]
ontime0	23497.599912465	Sum of GTIs [s]
ontime1	23494.358942151	Sum of GTIs [s]
ontime2	23497.599912465	Sum of GTIs [s]
ontime3	23494.358902305	Sum of GTIs [s]
ontime6	23497.599912465	Sum of GTIs [s]
ontime7	23497.599912465	Sum of GTIs [s]
l2events	144050	Number of level 2 events



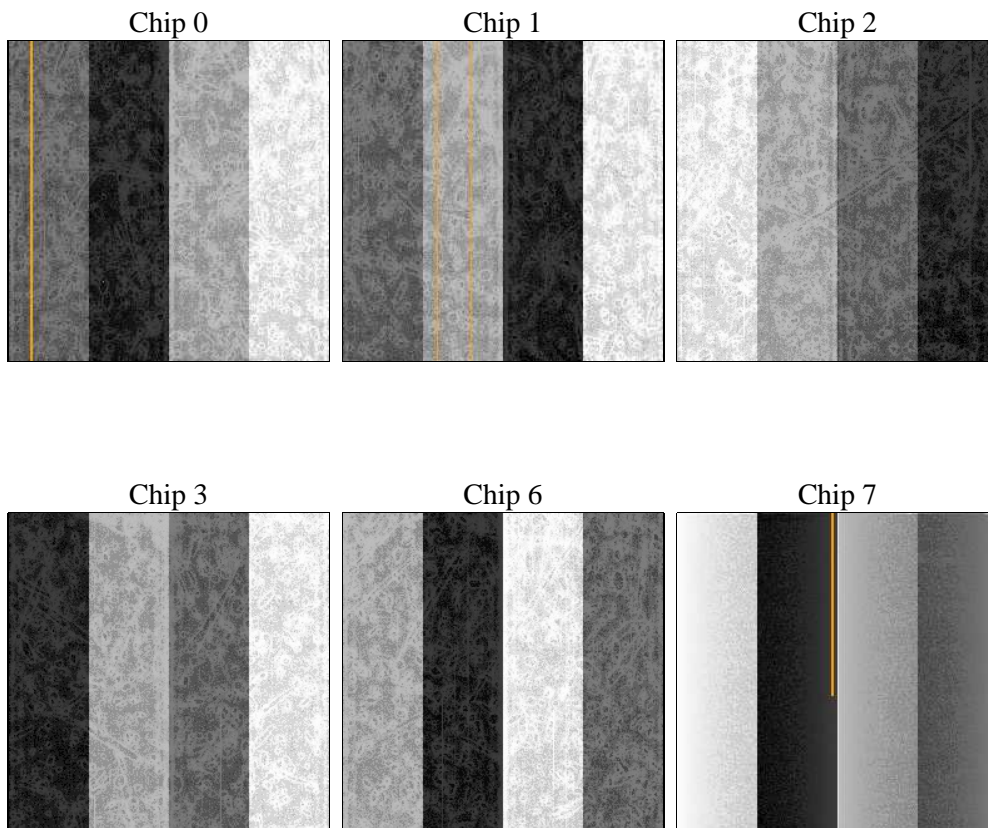
2 OBI

2.1 OBI

2.1.1 Images



2.1.2 Bias



2.1.3 Parameters

obi_num	0	Obi number	sched_exp_time	23322.125000	[s] Scheduled observation exposure time
ascdsver	8.5.1.1	Processing system revision	ontime	23494.358902305	Sum of GTIs [s]
caldsver	4.5.5	 	ontime0	23497.599912465	Sum of GTIs [s]
date	2012-12-31T11:47:14	Date and time of file creation	ontime1	23494.358942151	Sum of GTIs [s]
revision	3	Processing version of data	ontime2	23497.599912465	Sum of GTIs [s]
			ontime3	23494.358902305	Sum of GTIs [s]
			ontime6	23497.599912465	Sum of GTIs [s]
			ontime7	23497.599912465	Sum of GTIs [s]
			l1events	987856	Number of level 1 events

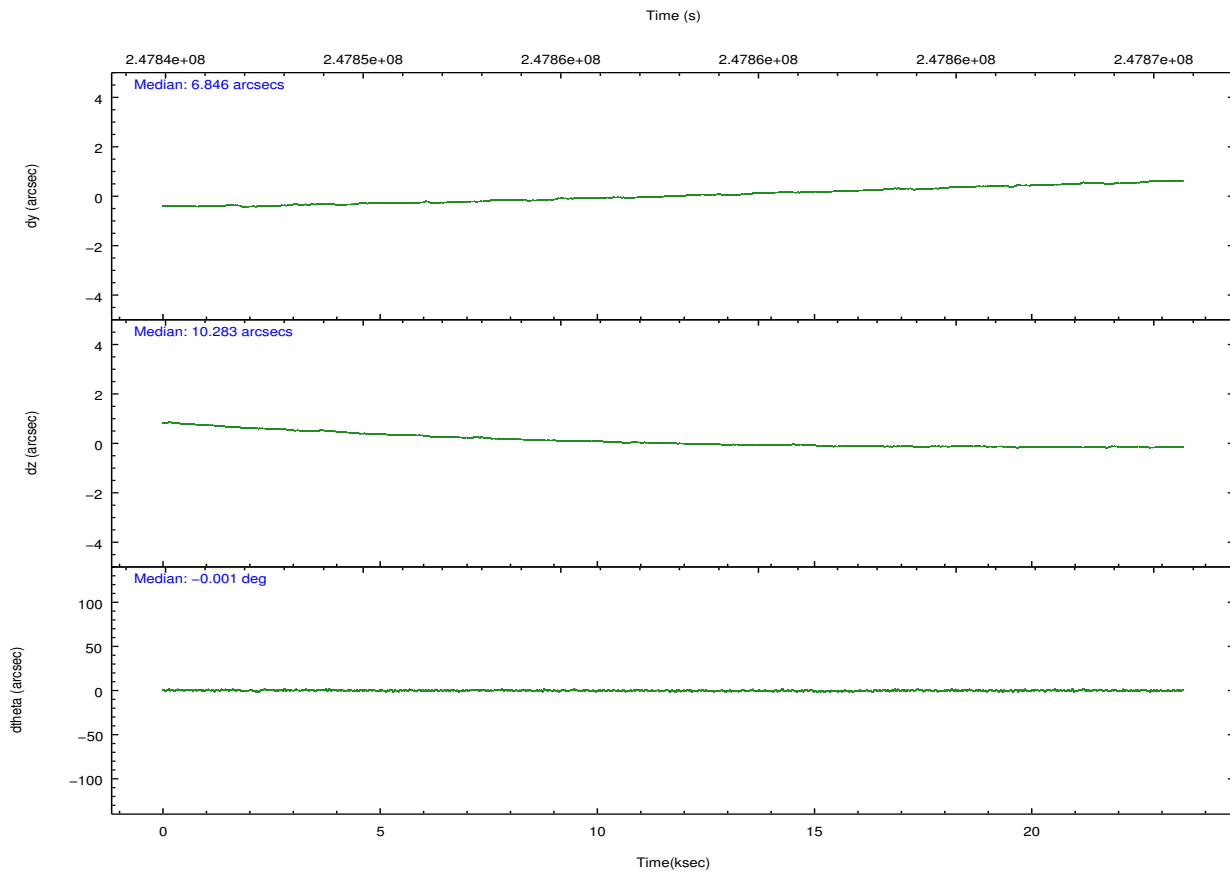
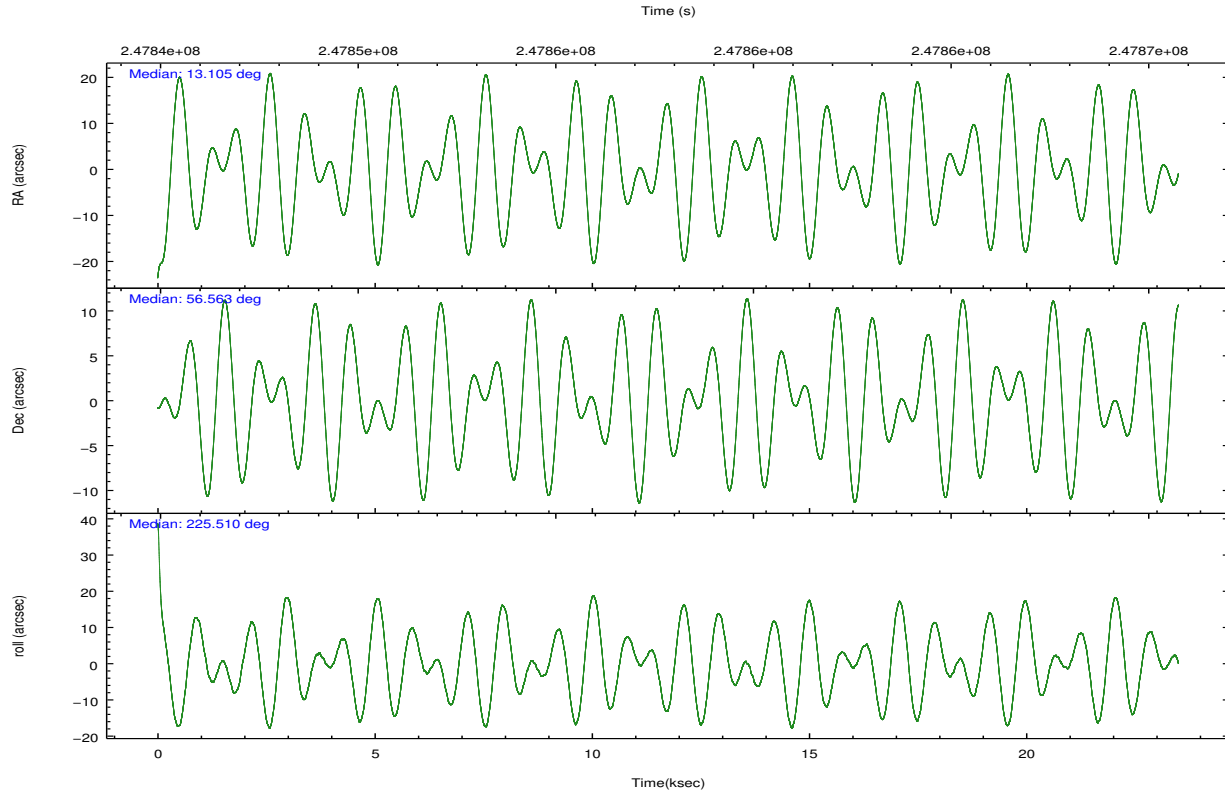
2.1.4 Events

	ccd 0	ccd 1	ccd 2	ccd 3	ccd 6	ccd 7		ccd 0	ccd 1	ccd 2	ccd 3	ccd 6	ccd 7
level 1 events	152226	151344	172844	164018	167182	180242	grade 0 events	5433	6939	5921	7301	5720	6851
rejected events	137033	133771	157588	147053	151099	101865		3%	4%	3%	4%	3%	3%
rejected %	90%	88%	91%	89%	90%	56%	grade 1 events	79	77	68	106	86	162
								0%	0%	0%	0%	0%	0%
							grade 2 events	3764	3882	3724	3531	3698	16378
								2%	2%	2%	2%	2%	9%
							grade 3 events	1906	2022	1757	1897	1901	7756
								1%	1%	1%	1%	1%	4%
							grade 4 events	1738	1981	1771	1816	1809	7620
								1%	1%	1%	1%	1%	4%
							grade 5 events	5357	6073	5117	6398	6730	19083
								3%	4%	2%	3%	4%	10%
							grade 6 events	3068	3581	2815	3170	3763	43628
								2%	2%	1%	1%	2%	24%
							grade 7 events	130881	126789	151671	139799	143475	78764
								85%	83%	87%	85%	85%	43%

2.2 Compared Parameters

Parameter	Planned	Actual	Parameter	Planned	Actual
Instrument	ACIS	ACIS	Obspar format version number	7	7
Detector	ACIS-012367	ACIS-012367	Obspar file type	PREDICTED	ACTUAL
Grating	NONE	NONE	Obspar update status	NONE	UPDATED
Data mode	VFAINT	VFAINT	Number of optional ACIS chips dropped	0	0
Observation mode	POINTING	POINTING	On-chip summing requested	N	N
[deg] Pointing RA	13.117383	13.10509756021293	Subarray requested	NONE	NONE
[deg] Pointing Dec	56.589758	56.56320641058218	Alternating exposures requested	N	N
[deg] Pointing Roll	225.296276	225.5152267125284	[s] Primary exposure time	0.000000	3.2
[mm] SIM focus pos	-0.782348	-0.7809083437167272			
[mm] SIM defocus	0	0.001439871863259334			
[mm] SIM translation stage pos	-233.592463	-233.5874344608287			
[mm] SIM translation stage offset	0	-0.005018542100998502			
[s] Observation start time (MET)	247846269.184000	247844570.05253			
Observation start date	2005-11-08T14:10:05	2005-11-08T13:42:50			
[s] Observation end time (MET)	247869591.184000	247869826.0537			
Observation end date	2005-11-08T20:38:47	2005-11-08T20:43:46			
Read mode	TIMED	TIMED			

2.3 Aspect

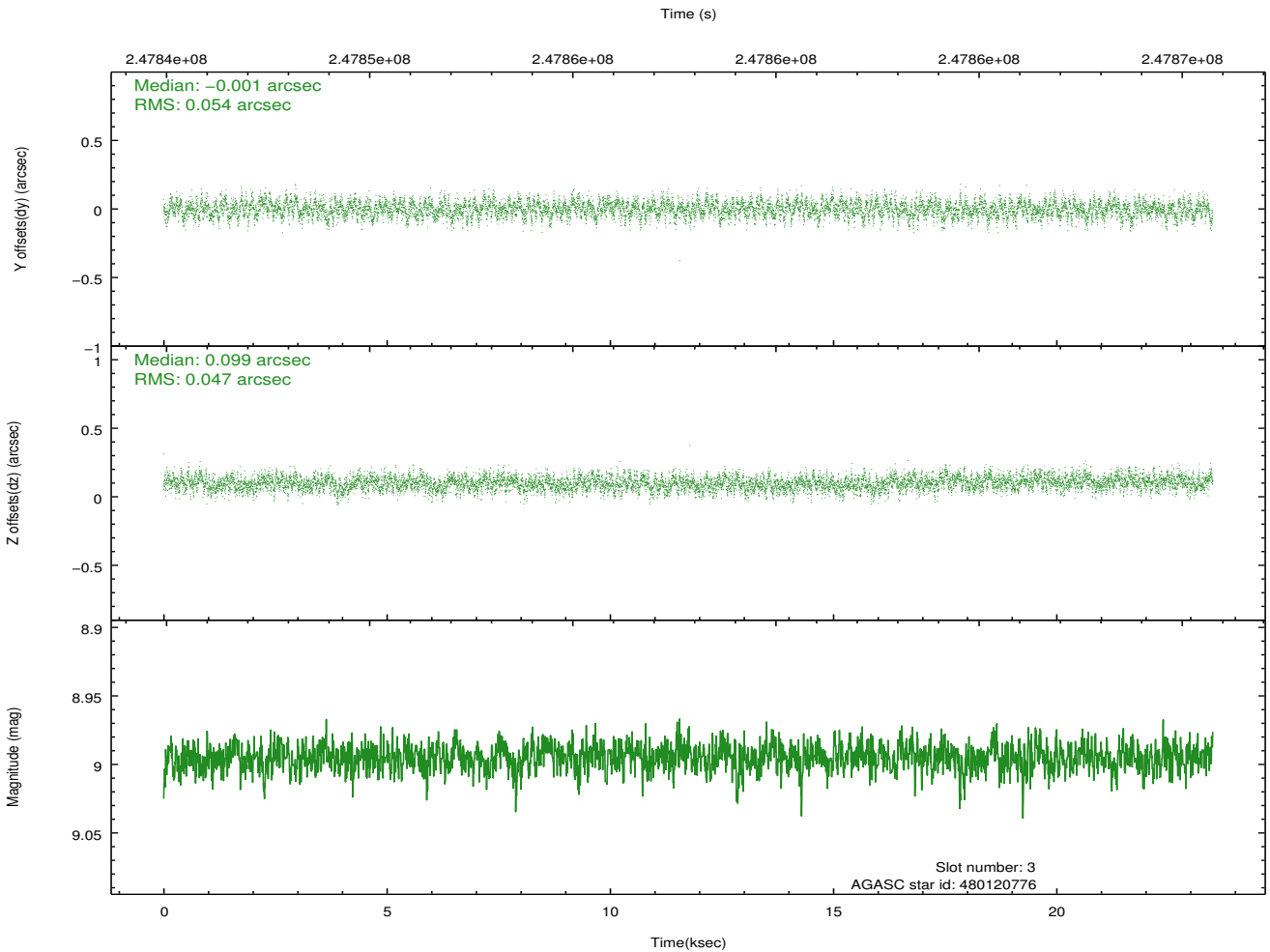
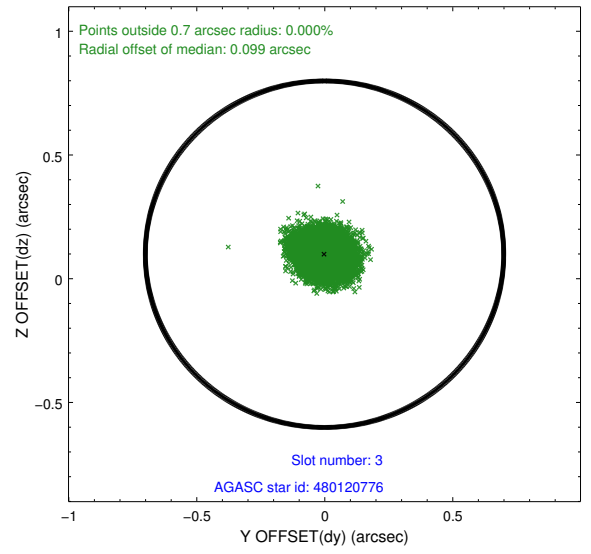
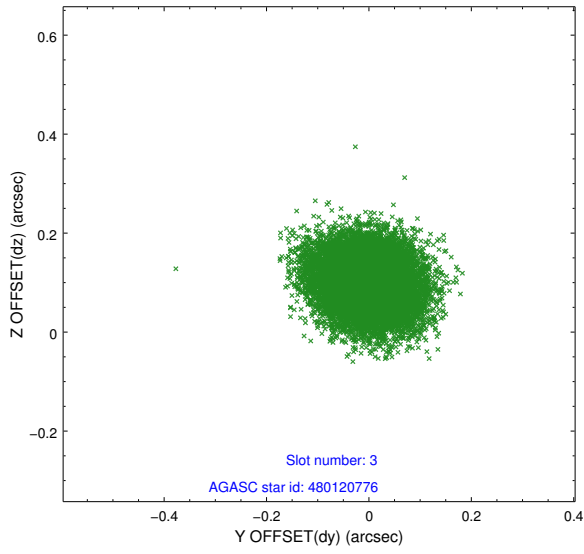


Slot Statistics

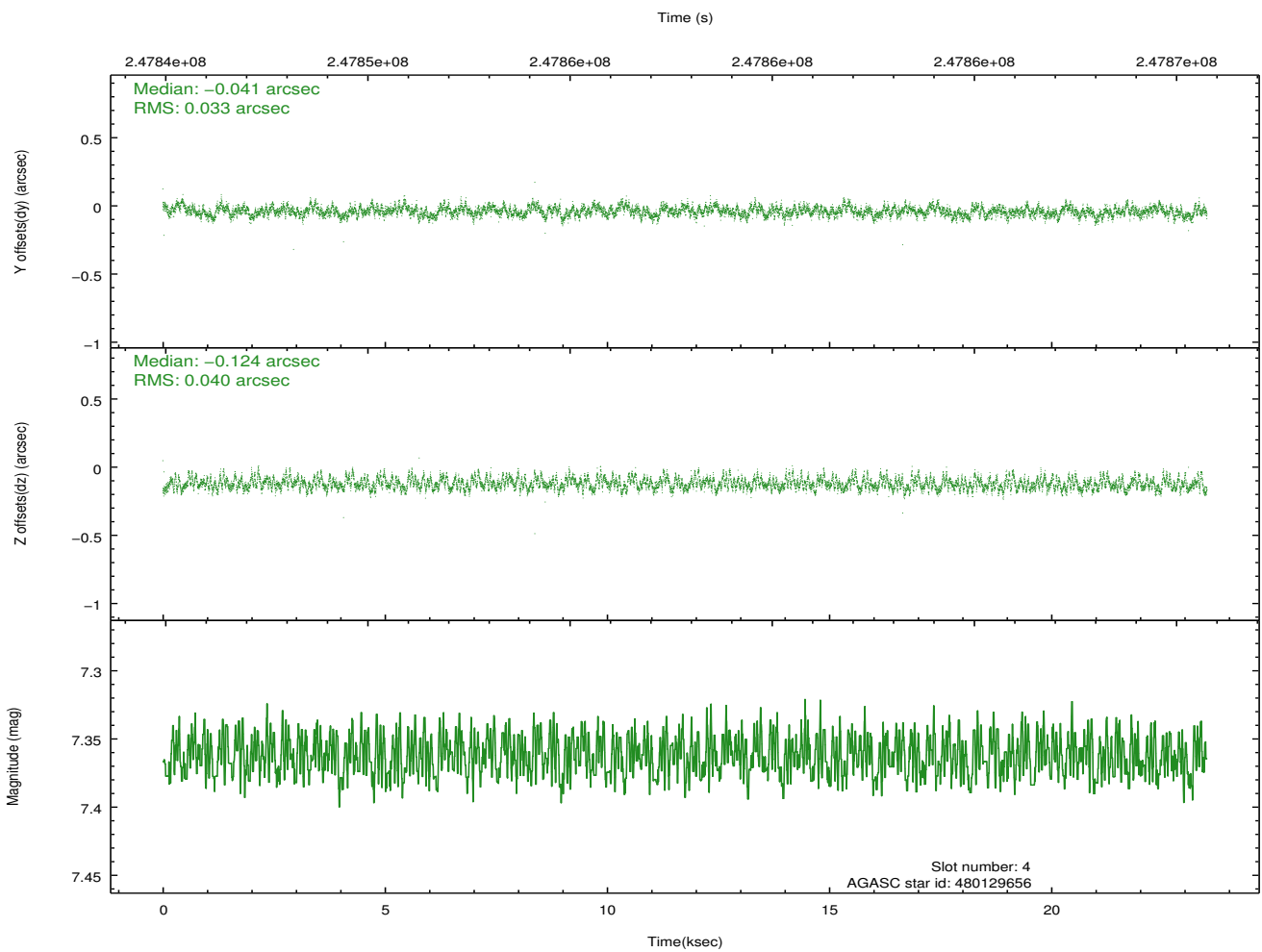
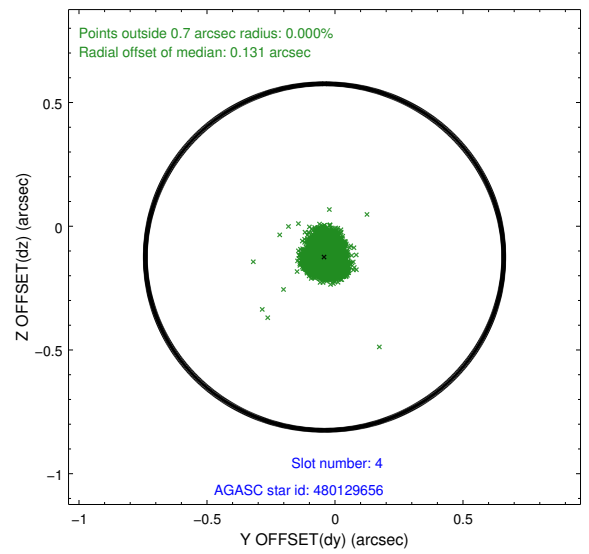
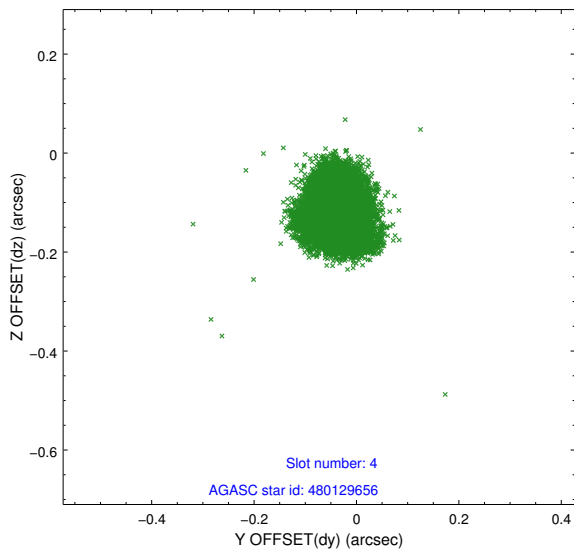
slot	status	id	mag	n_pts	med_dy	med_dz	dr1	dr2	ra	dec	mean_y	mean_z
0	FID	ACIS-I-4	7.18	5732	0.102	0.021	0.022	0.038	0.000000	0.000000	2152.87	1066.00
1	FID	ACIS-I-5	7.23	5733	-0.200	0.017	0.012	0.020	0.000000	0.000000	-1815.21	1063.90
2	FID	ACIS-I-6	7.26	5732	0.001	0.029	0.017	0.038	0.000000	0.000000	398.21	1708.22
3	GUIDE	480120776	8.99	11463	-0.001	0.099	0.076	0.122	11.785837	56.559271	1918.37	-1817.88
4	GUIDE	480129656	7.36	11465	-0.041	-0.124	0.055	0.088	13.070380	56.264365	898.90	757.30
5	GUIDE	480136328	7.71	11399	0.013	0.017	0.065	0.102	13.273425	57.219156	-1824.18	-1377.80
6	GUIDE	481821576	7.92	11465	0.010	0.022	0.059	0.091	13.802183	56.483052	-689.48	1232.95
7	GUIDE	479609704	8.42	11464	0.019	-0.014	0.077	0.120	13.331651	55.769395	1793.42	2385.87

2.4 Star Slots

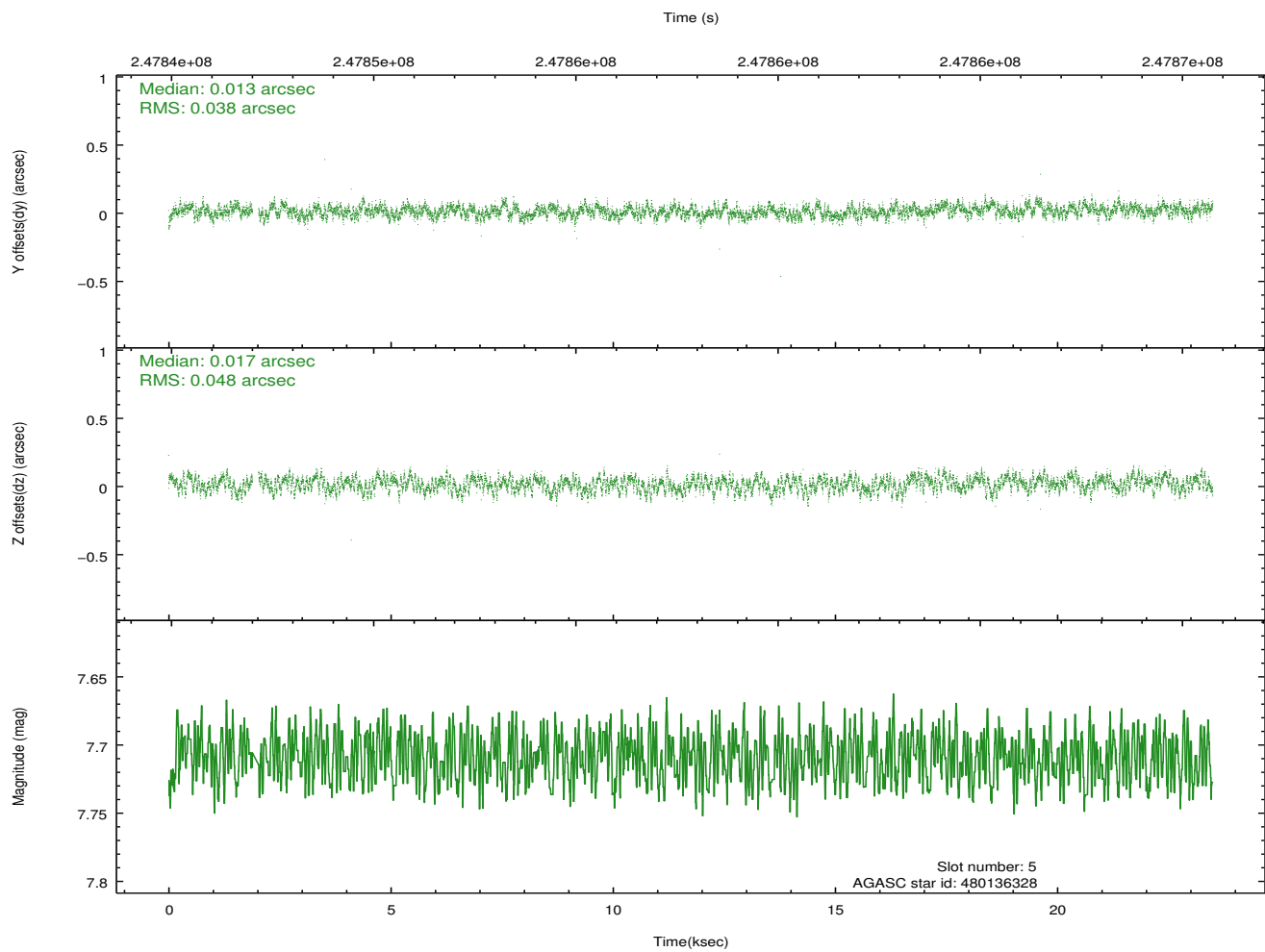
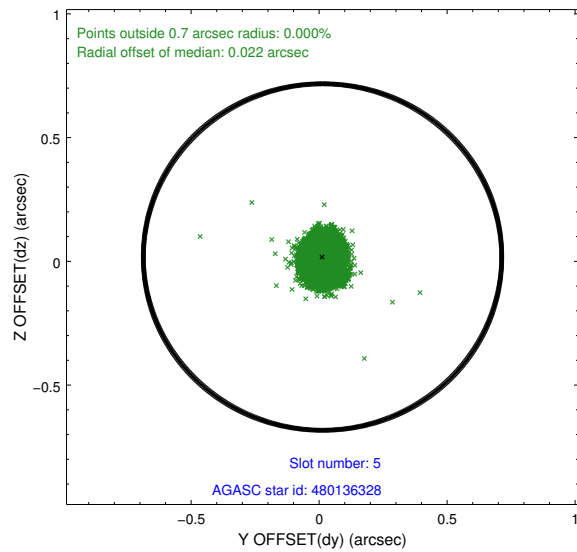
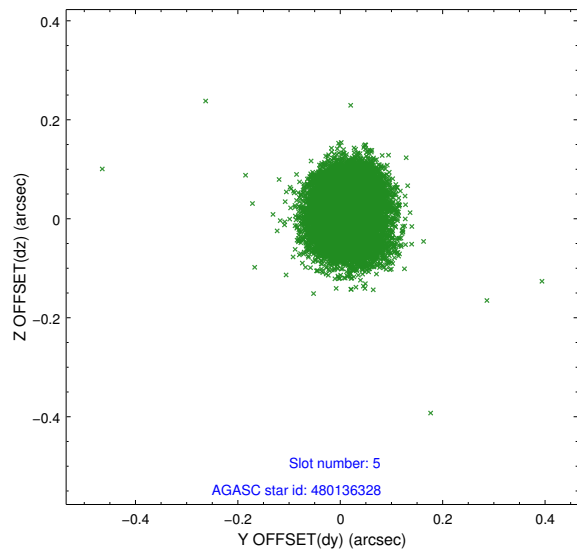
2.4.1 Slot 3



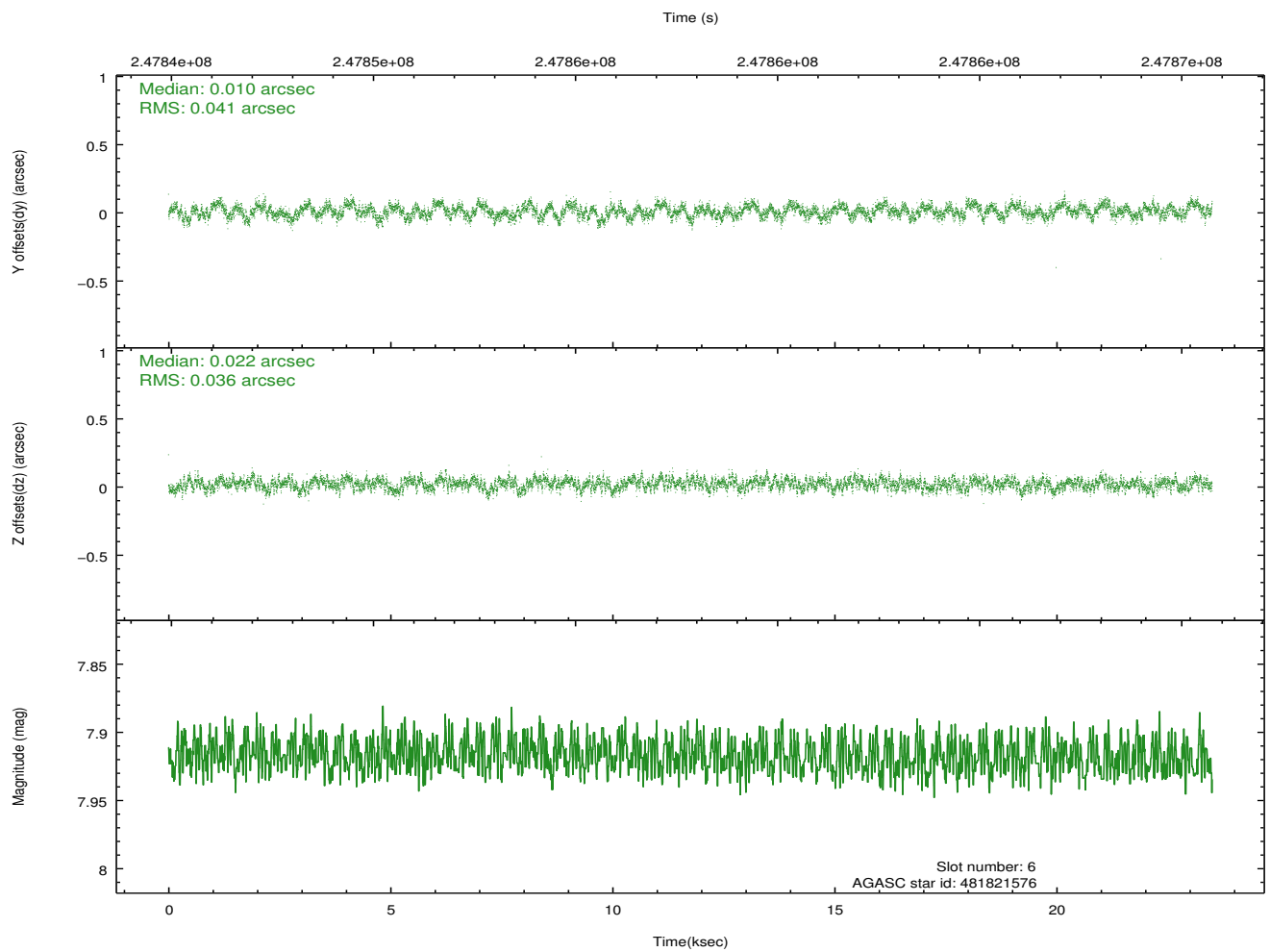
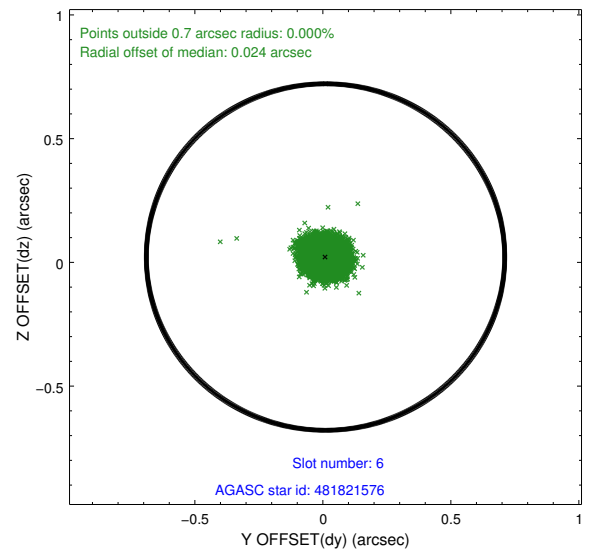
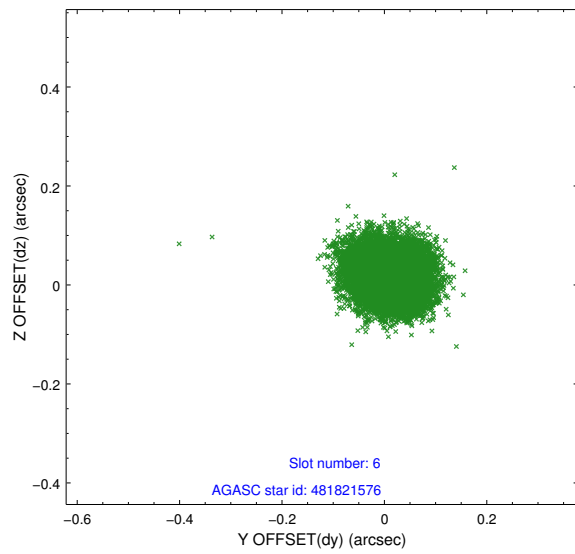
2.4.2 Slot 4



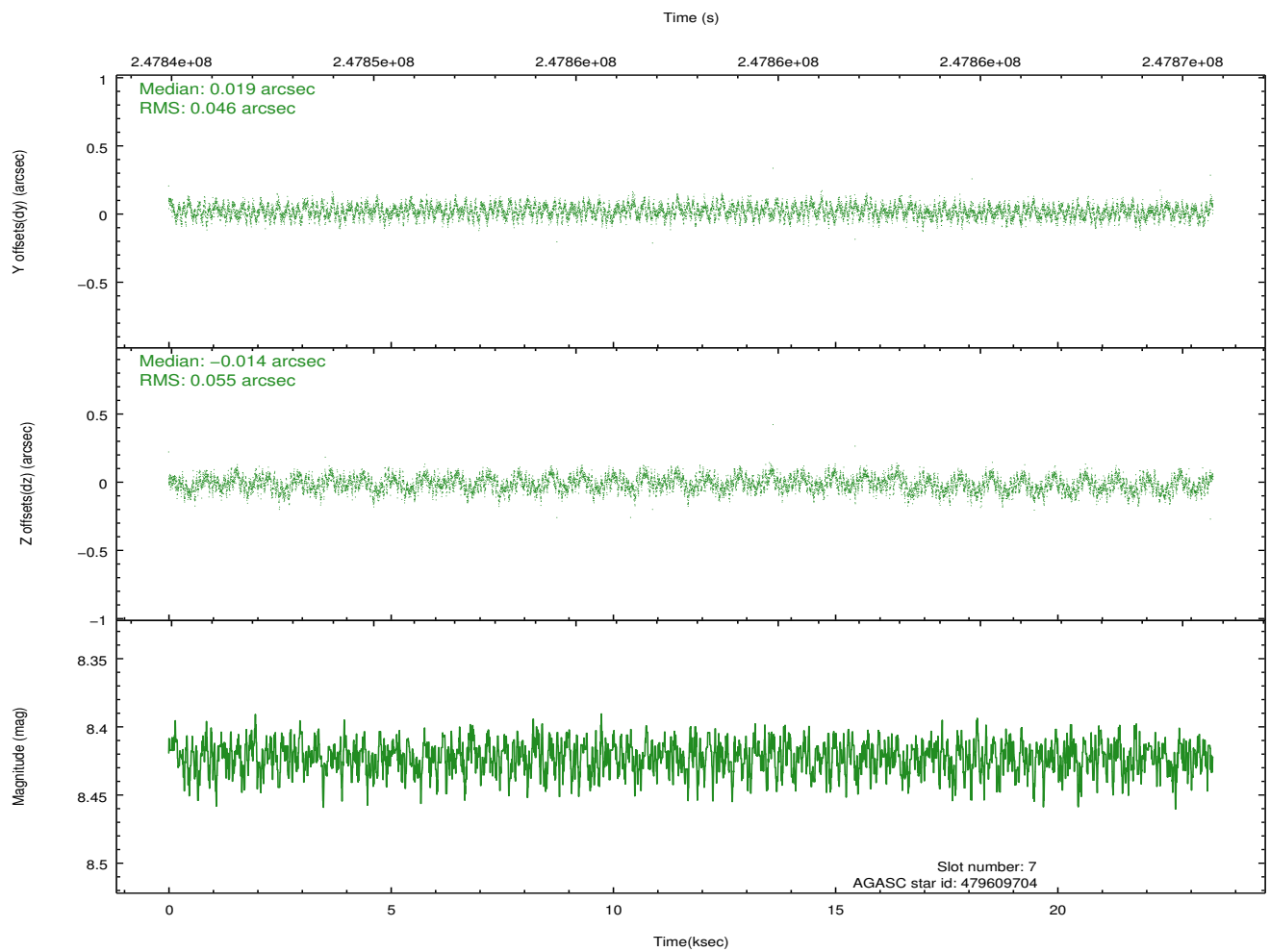
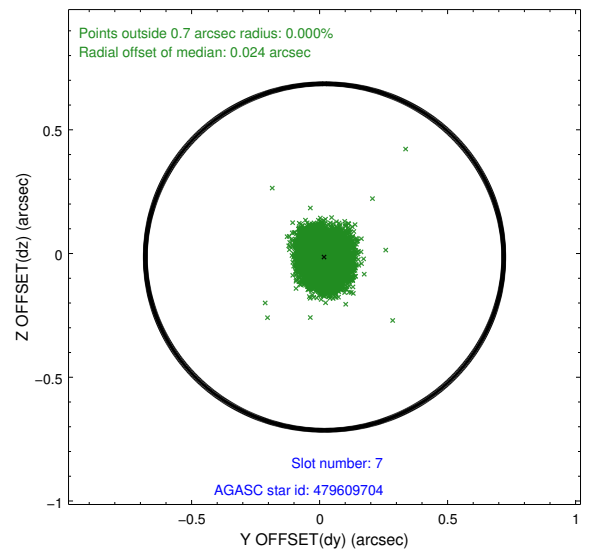
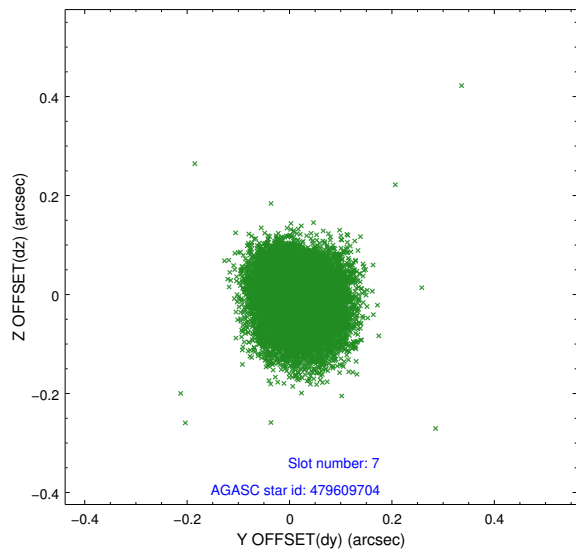
2.4.3 Slot 5



2.4.4 Slot 6

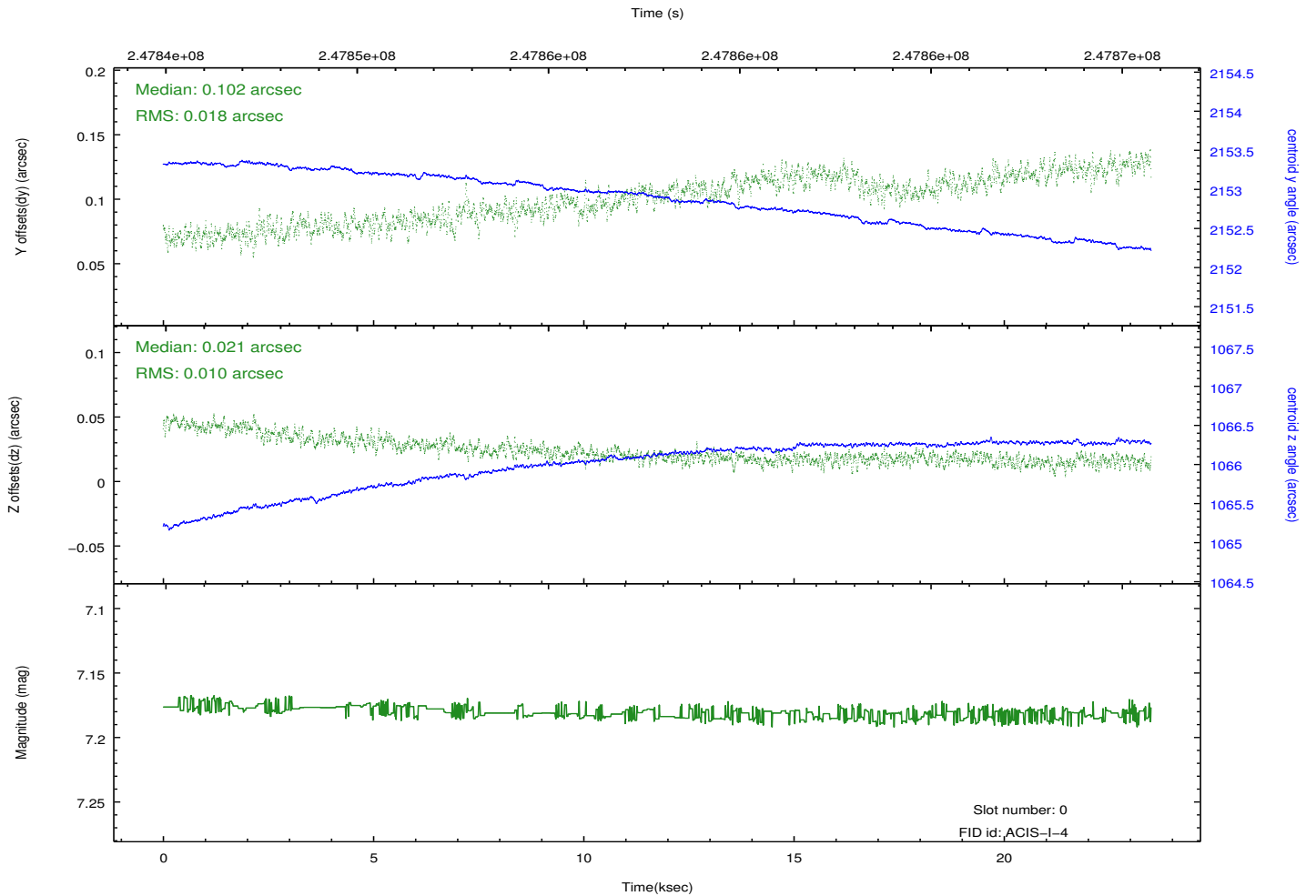
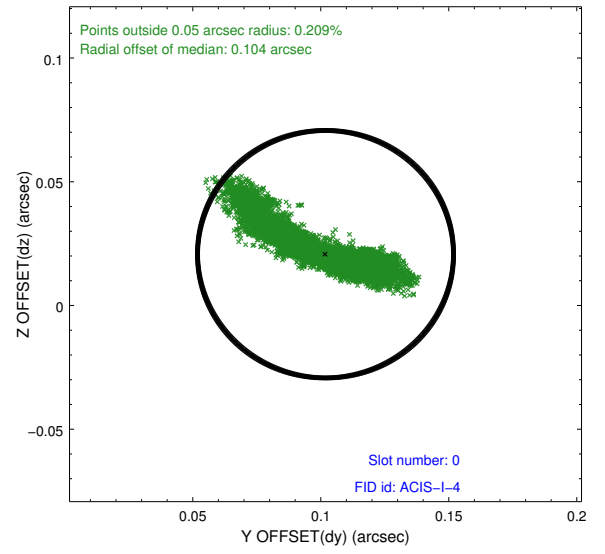
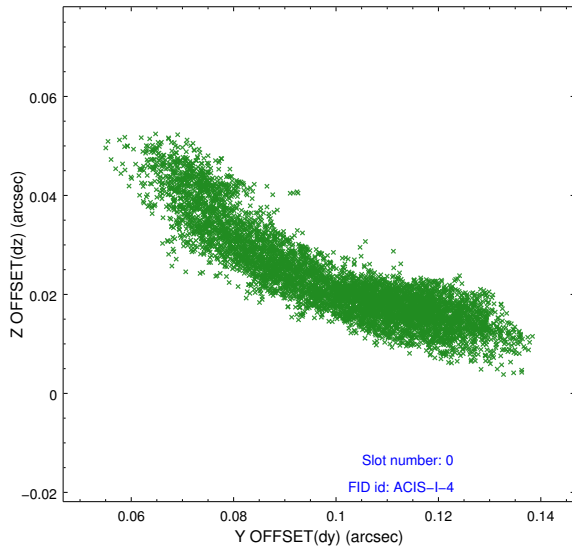


2.4.5 Slot 7

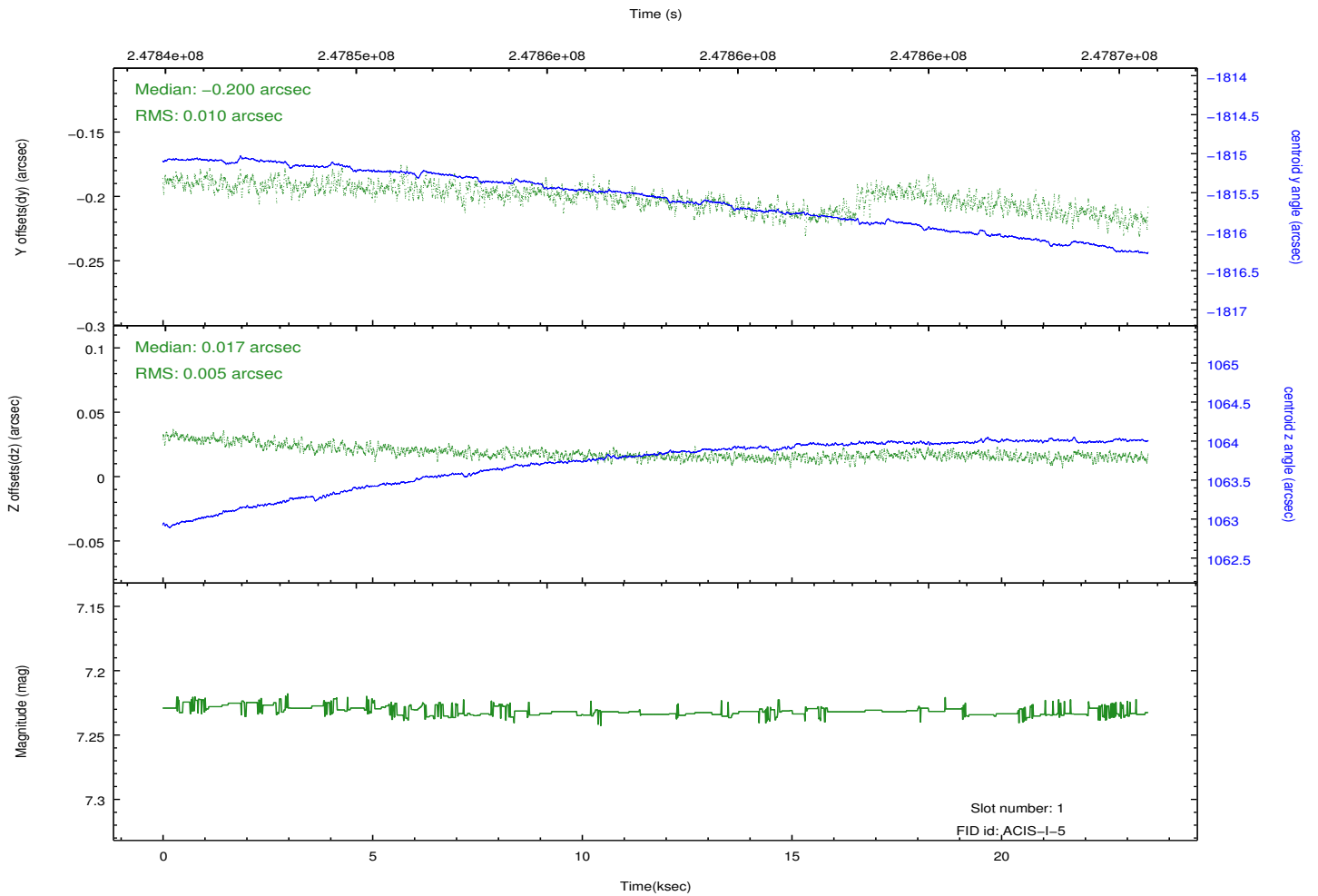
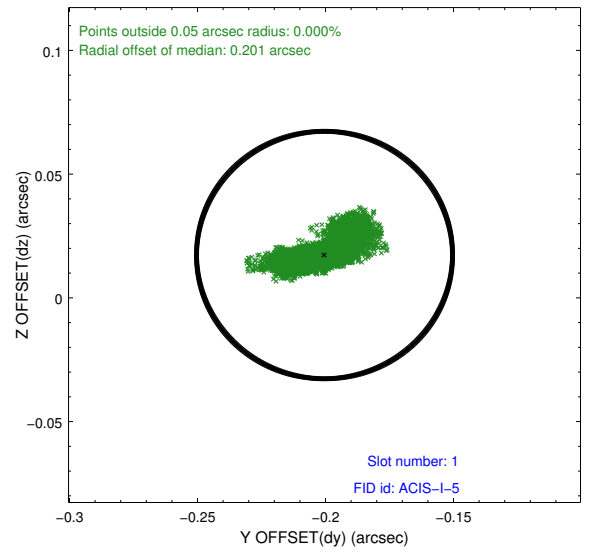
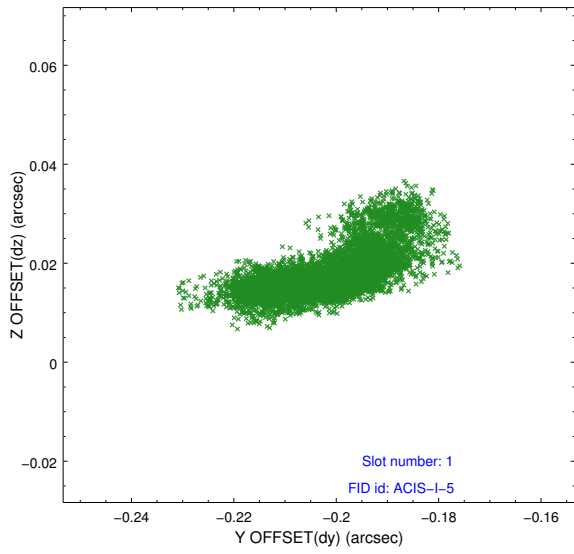


2.5 FID Slots

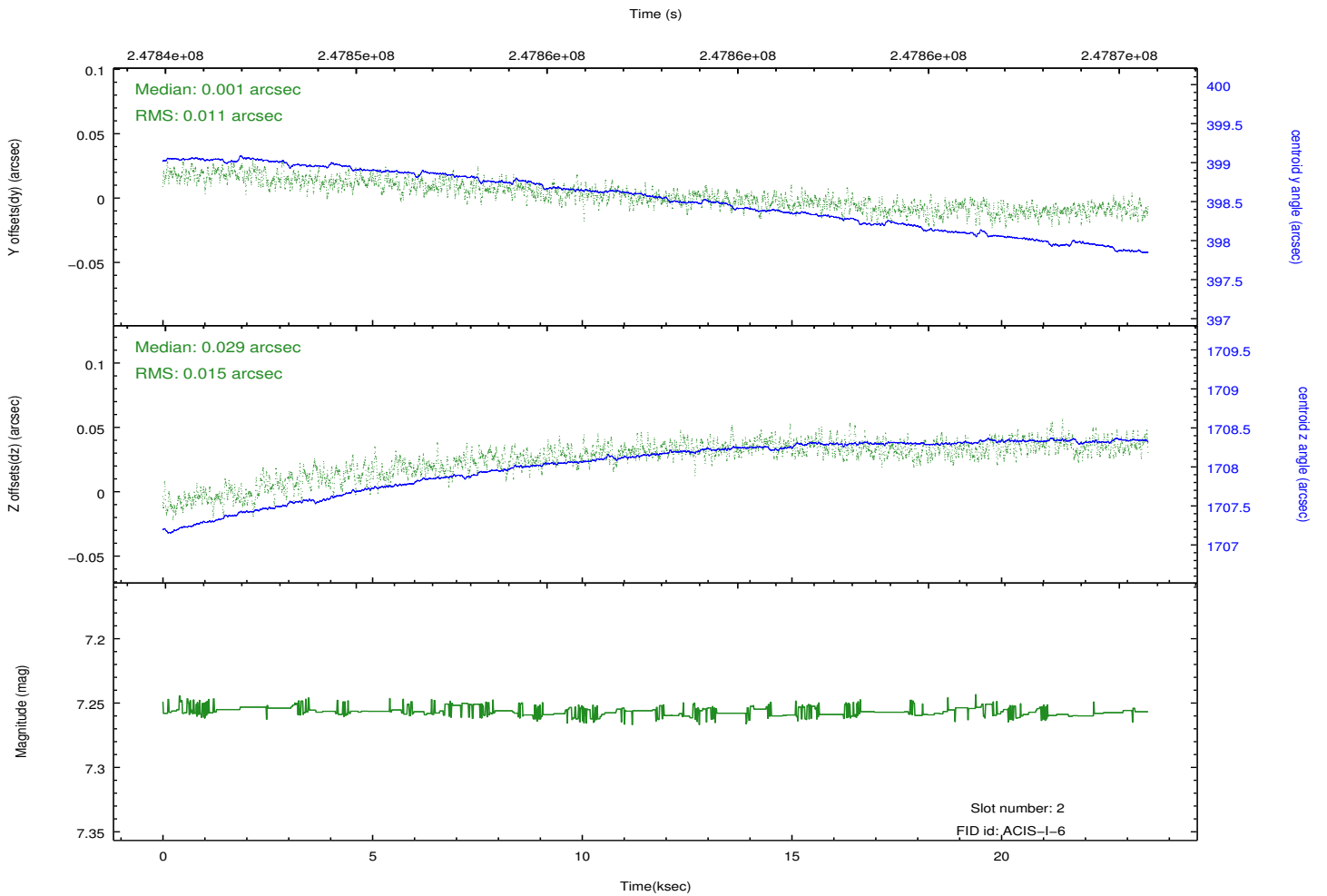
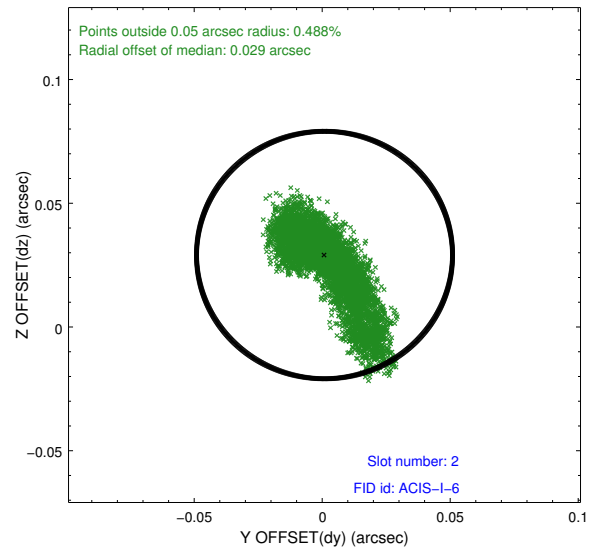
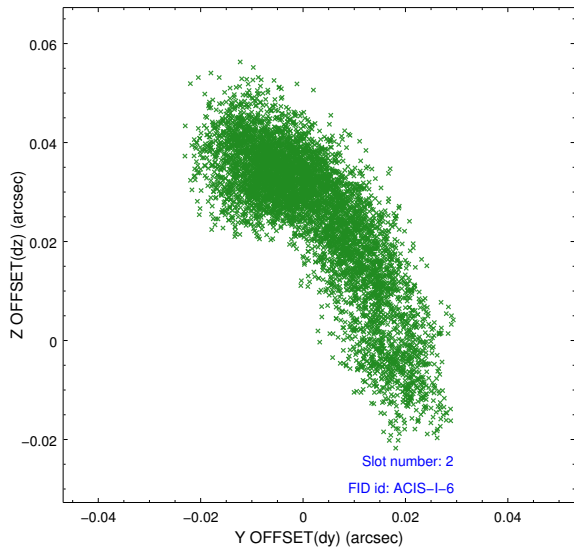
2.5.1 Slot 0



2.5.2 Slot 1



2.5.3 Slot 2



A Summary

A.1 Status

V&V Scientist	Beth Sundheim
V&V Date (YYYY-MM-DD)	2013.01.28
V&V Edition	1
V&V Disposition and Status	OK
V&V Charge Time	23.49435

A.2 Comments