

V&V Reference Report

L2 ASCDS Version : 8.4.3

Observation 7246 - L2 Version 2
Chandra X-Ray Center

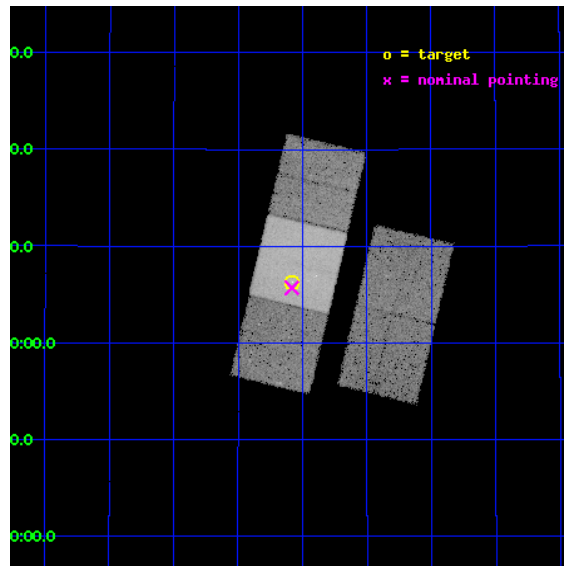
L2 Processing Date : Mar 30 2012

Contents

1	Front	2
2	OBI	3
2.1	OBI	3
2.1.1	Images	3
2.1.2	Bias	3
2.1.3	Parameters	4
2.1.4	Events	4
2.2	Compared Parameters	5
2.3	Aspect	6
2.4	Star Slots	9
2.4.1	Slot 3	9
2.4.2	Slot 4	10
2.4.3	Slot 5	11
2.4.4	Slot 6	12
2.4.5	Slot 7	13
2.5	FID Slots	14
2.5.1	Slot 0	14
2.5.2	Slot 1	15
2.5.3	Slot 2	16
A	Summary	17
A.1	Status	17
A.2	Comments	17

1 Front

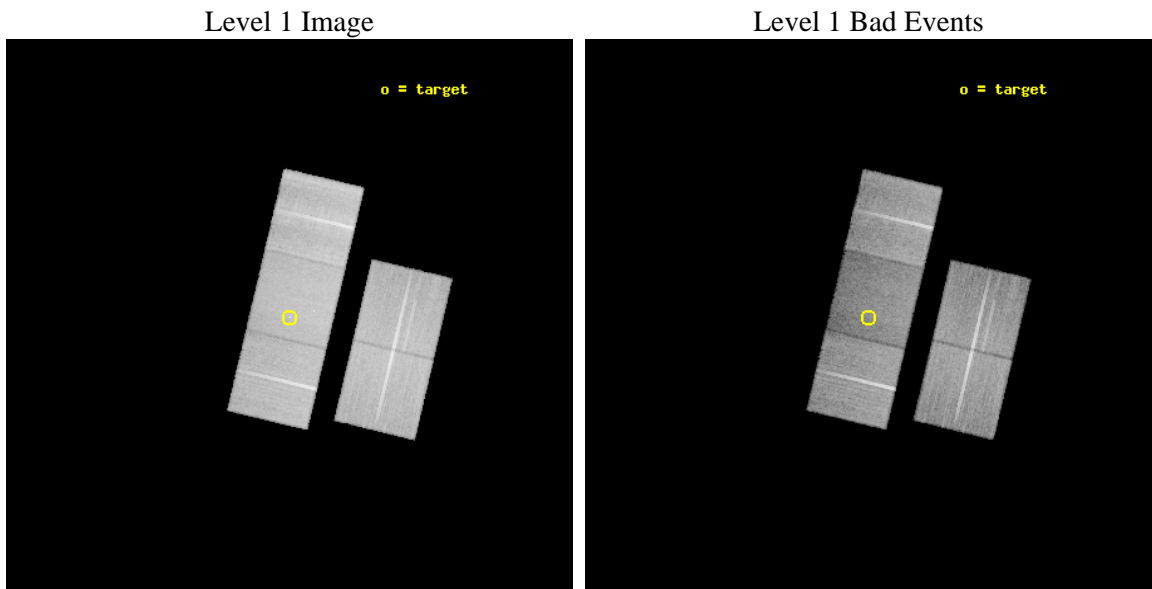
seq_num	200384	Sequence number
obs_id	7246	Observation id
title	DG Tauri: A T Tauri Star with an X-Ray Jet?	Proposal title
observer	Prof. Manuel Guedel	Principal investigator
object	DG Tau	Source name
dtcycle	0	
cycle	P	events from which exps? Prim/Second/Both
ra_targ	66.77	Observer's specified target RA [deg]
dec_targ	26.104694	Observer's specified target Dec [deg]
ra_nom	66.770630833299	Nominal RA [deg]
dec_nom	26.095019474341	Nominal Dec [deg]
roll_nom	283.35384733412	Nominal Roll [deg]
revision	2	Processing version of data
ontime	28178.99994579	Sum of GTIs [s]
livetime	27810.82056642	Livetime [s]
ontime2	28172.718025297	Sum of GTIs [s]
ontime3	28178.99994579	Sum of GTIs [s]
ontime6	28175.858975559	Sum of GTIs [s]
ontime7	28178.99994579	Sum of GTIs [s]
ontime8	28178.99994579	Sum of GTIs [s]
l2events	172572	Number of level 2 events



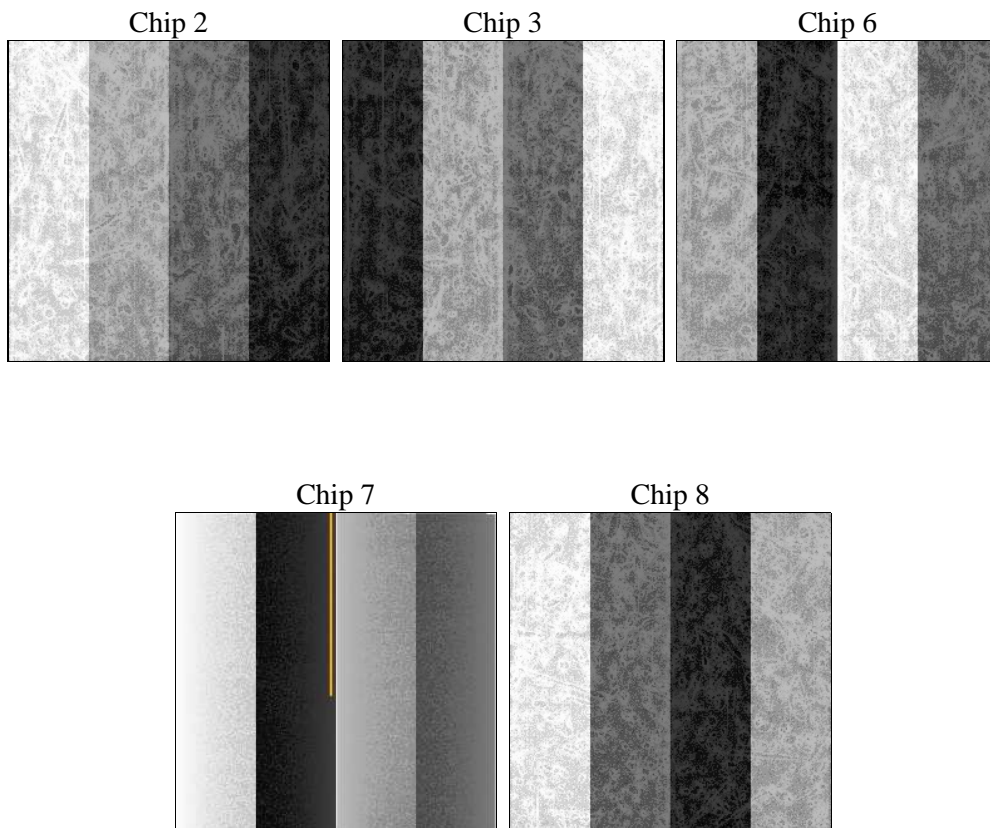
2 OBI

2.1 OBI

2.1.1 Images



2.1.2 Bias



2.1.3 Parameters

obi_num	0	Obi number	sched_exp_time	28000.000000	[s] Scheduled observation exposure time
ascdsver	8.4.3	Processing system revision	ontime	28178.99994579	Sum of GTIs [s]
caldbver	4.4.8	 	ontime2	28172.718025297	Sum of GTIs [s]
date	2012-03-30T05:10:58	Date and time of file creation	ontime3	28178.99994579	Sum of GTIs [s]
revision	2	Processing version of data	ontime6	28175.858975559	Sum of GTIs [s]
			ontime7	28178.99994579	Sum of GTIs [s]
			ontime8	28178.99994579	Sum of GTIs [s]
			l1events	1135811	Number of level 1 events

2.1.4 Events

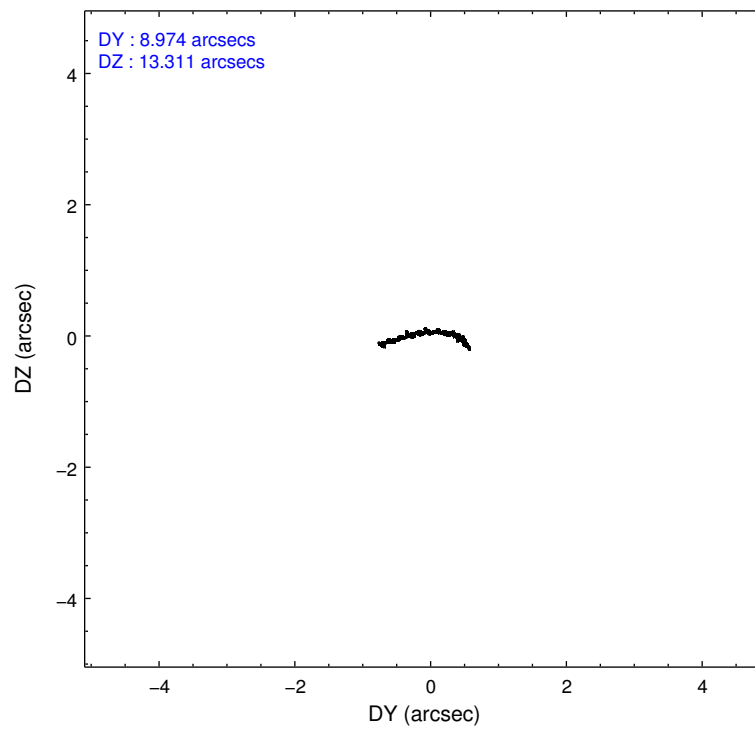
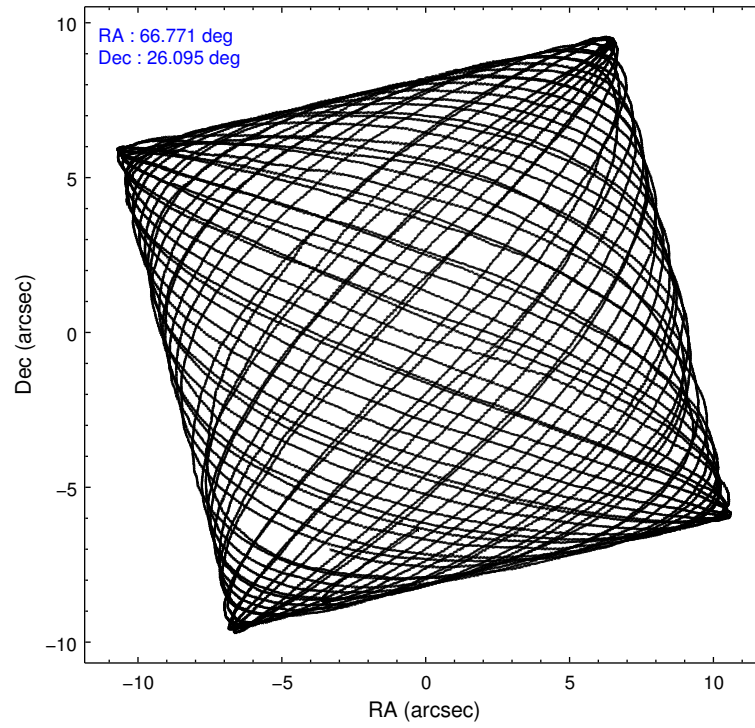
	ccd 2	ccd 3	ccd 6	ccd 7	ccd 8
level 1 events	221744	204725	216759	228084	264499
rejected events	202436	185916	195274	124919	203349
rejected %	91%	90%	90%	54%	76%

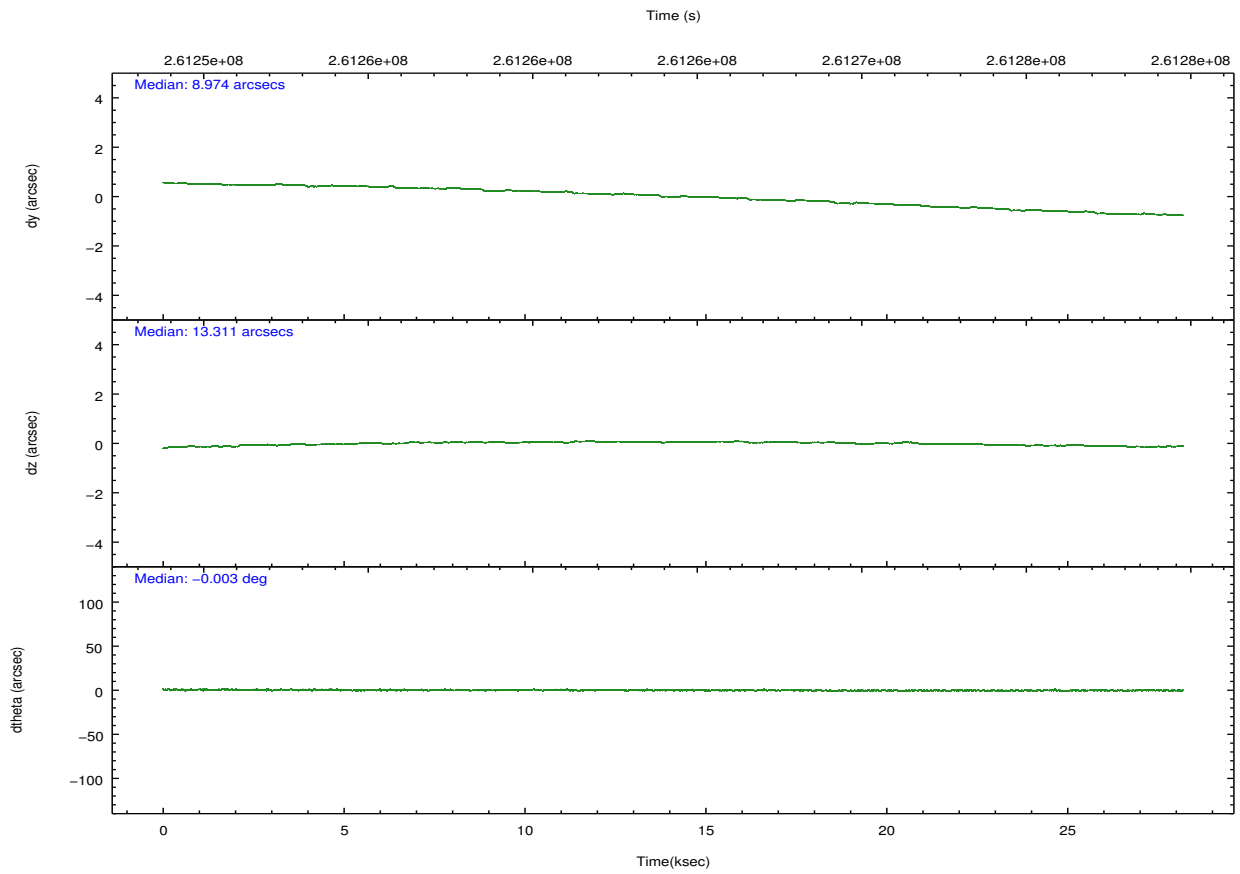
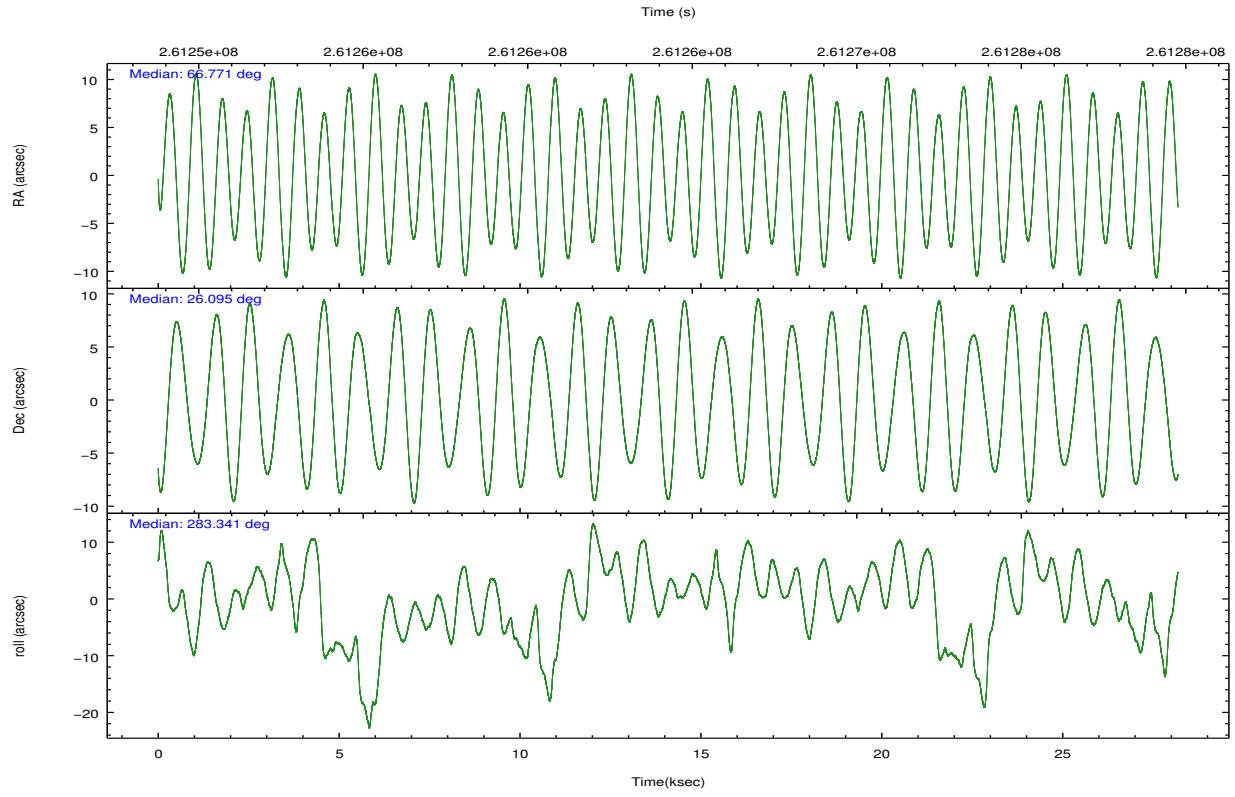
	ccd 2	ccd 3	ccd 6	ccd 7	ccd 8
grade 0 events	6678	6644	7442	8969	18426
	3%	3%	3%	3%	6%
grade 1 events	136	130	112	210	198
	0%	0%	0%	0%	0%
grade 2 events	4706	4211	4819	21035	14023
	2%	2%	2%	9%	5%
grade 3 events	2225	2220	2511	10018	6939
	1%	1%	1%	4%	2%
grade 4 events	2258	2230	2418	9678	6338
	1%	1%	1%	4%	2%
grade 5 events	6615	8103	8462	24274	11934
	2%	3%	3%	10%	4%
grade 6 events	3655	3741	4549	54592	16108
	1%	1%	2%	23%	6%
grade 7 events	195471	177446	186446	99308	190533
	88%	86%	86%	43%	72%

2.2 Compared Parameters

Parameter	Planned	Actual	Parameter	Planned	Actual
Instrument	ACIS	ACIS	Obspar format version number	7	7
Detector	ACIS-23678	ACIS-23678	Obspar file type	PREDICTED	ACTUAL
Grating	NONE	NONE	Obspar update status	NONE	UPDATED
Data mode	VFAINT	VFAINT	Number of optional ACIS chips dropped	0	0
Observation mode	POINTING	POINTING	On-chip summing requested	N	N
[deg] Pointing RA	66.749497	66.77063083329874	Subarray requested	NONE	NONE
[deg] Pointing Dec	26.114581	26.09501947434118	Alternating exposures requested	N	N
[deg] Pointing Roll	283.206533	283.3538473341183	[s] Primary exposure time	0.000000	3.1
[mm] SIM focus pos	-0.684267	-0.6828225247311905			
[mm] SIM defocus	0	0.001444936568705701			
[mm] SIM translation stage pos	-190.132523	-190.1400660498719			
[mm] SIM translation stage offset	0	0.00754346686406393			
[s] Observation start time (MET)	261250360.184000	261249203.4367			
Observation start date	2006-04-12T17:31:35	2006-04-12T17:13:23			
[s] Observation end time (MET)	261278360.184000	261279439.40061			
Observation end date	2006-04-13T01:18:15	2006-04-13T01:37:19			
Read mode	TIMED	TIMED			

2.3 Aspect



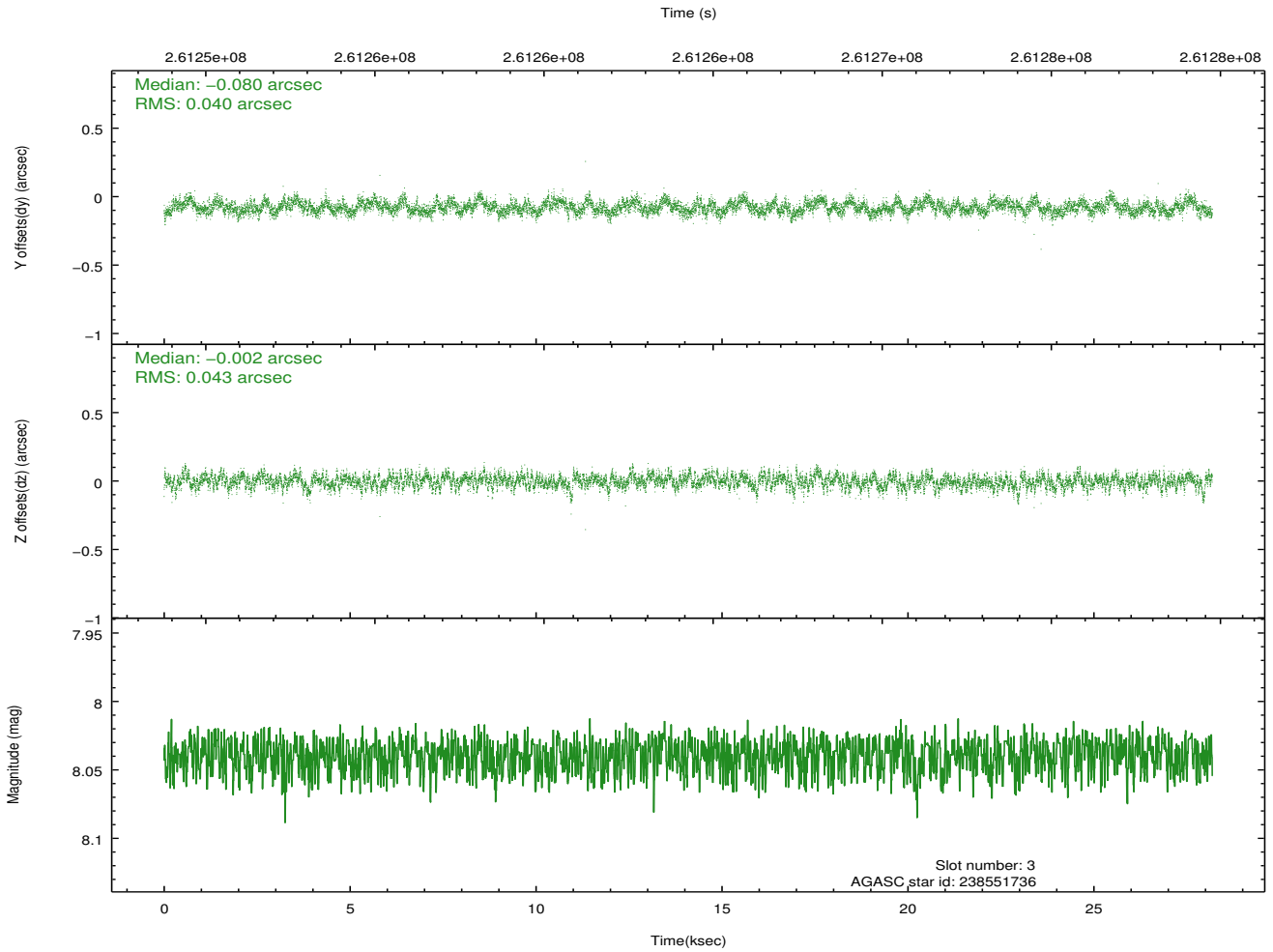
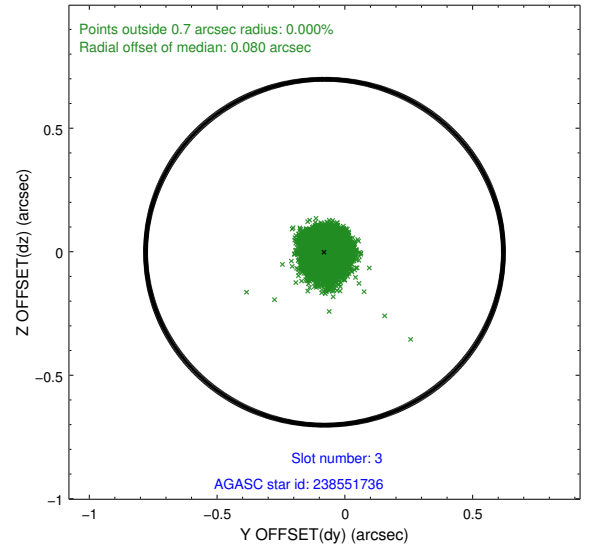
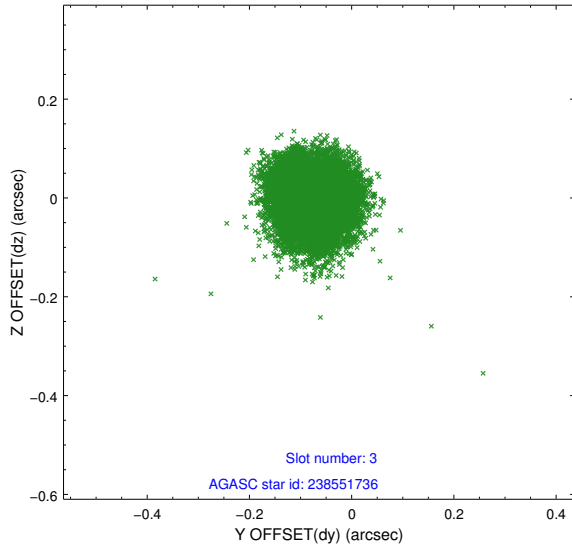


Slot Statistics

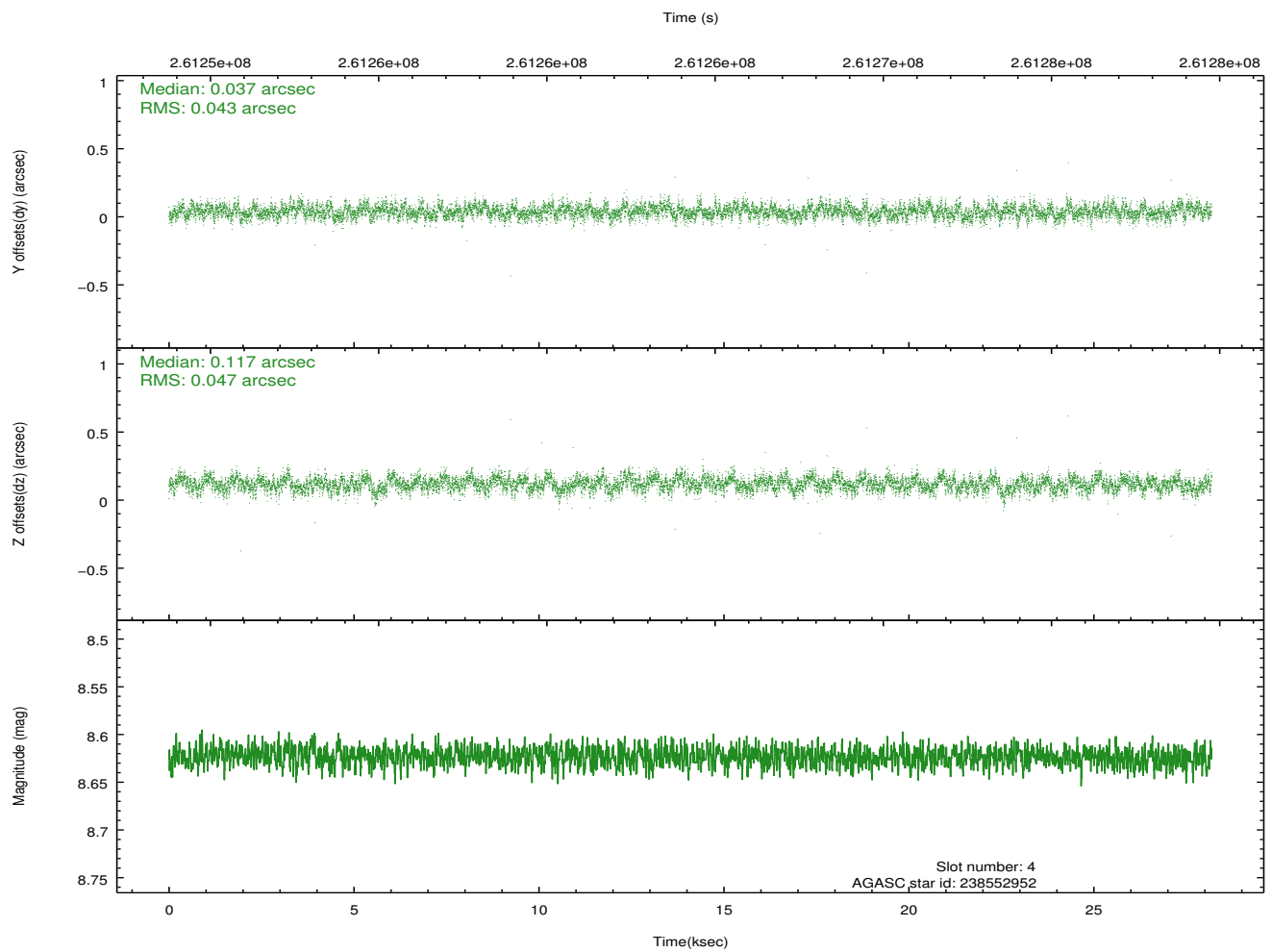
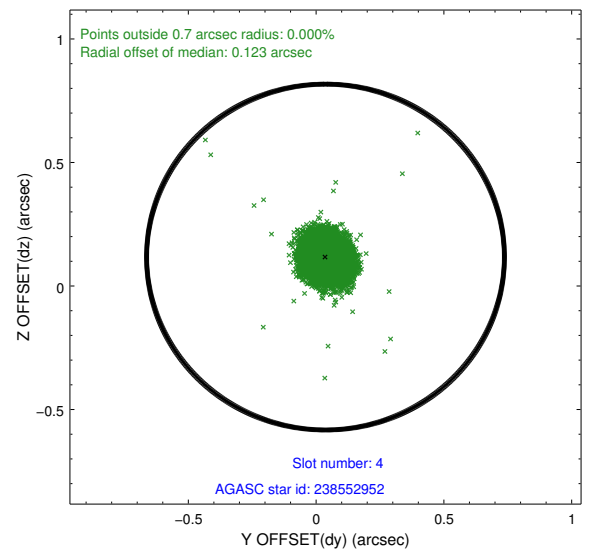
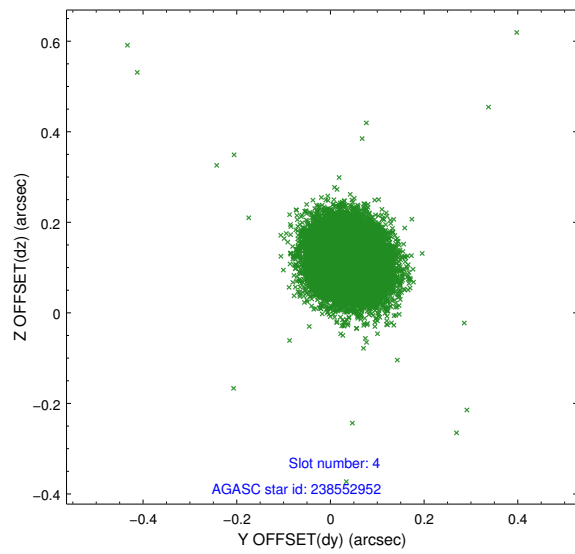
slot	status	id	mag	n_pts	med_dy	med_dz	dr1	dr2	ra	dec	mean_y	mean_z
0	FID	ACIS-S-2	7.10	6875	-0.015	-0.054	0.009	0.014	0.000000	0.000000	-761.78	-1734.68
1	FID	ACIS-S-4	7.19	6874	0.132	0.022	0.015	0.026	0.000000	0.000000	2151.62	173.76
2	FID	ACIS-S-5	7.23	6874	-0.147	0.041	0.012	0.021	0.000000	0.000000	-1814.62	167.59
3	GUIDE	238551736	8.04	13745	-0.080	-0.002	0.062	0.100	66.295103	25.749175	942.47	-1733.95
4	GUIDE	238552952	8.62	13746	0.037	0.117	0.066	0.106	66.435210	25.897396	528.17	-1169.23
5	GUIDE	238560976	7.89	13745	-0.076	0.010	0.062	0.097	66.476513	25.572013	1698.83	-1308.79
6	BAD	240255592	9.95	12526	-0.085	-0.206	0.134	0.218	67.373587	26.152056	324.73	1995.42
7	GUIDE	240257560	8.71	13742	0.198	0.066	0.072	0.117	66.998185	25.718771	1571.27	460.46

2.4 Star Slots

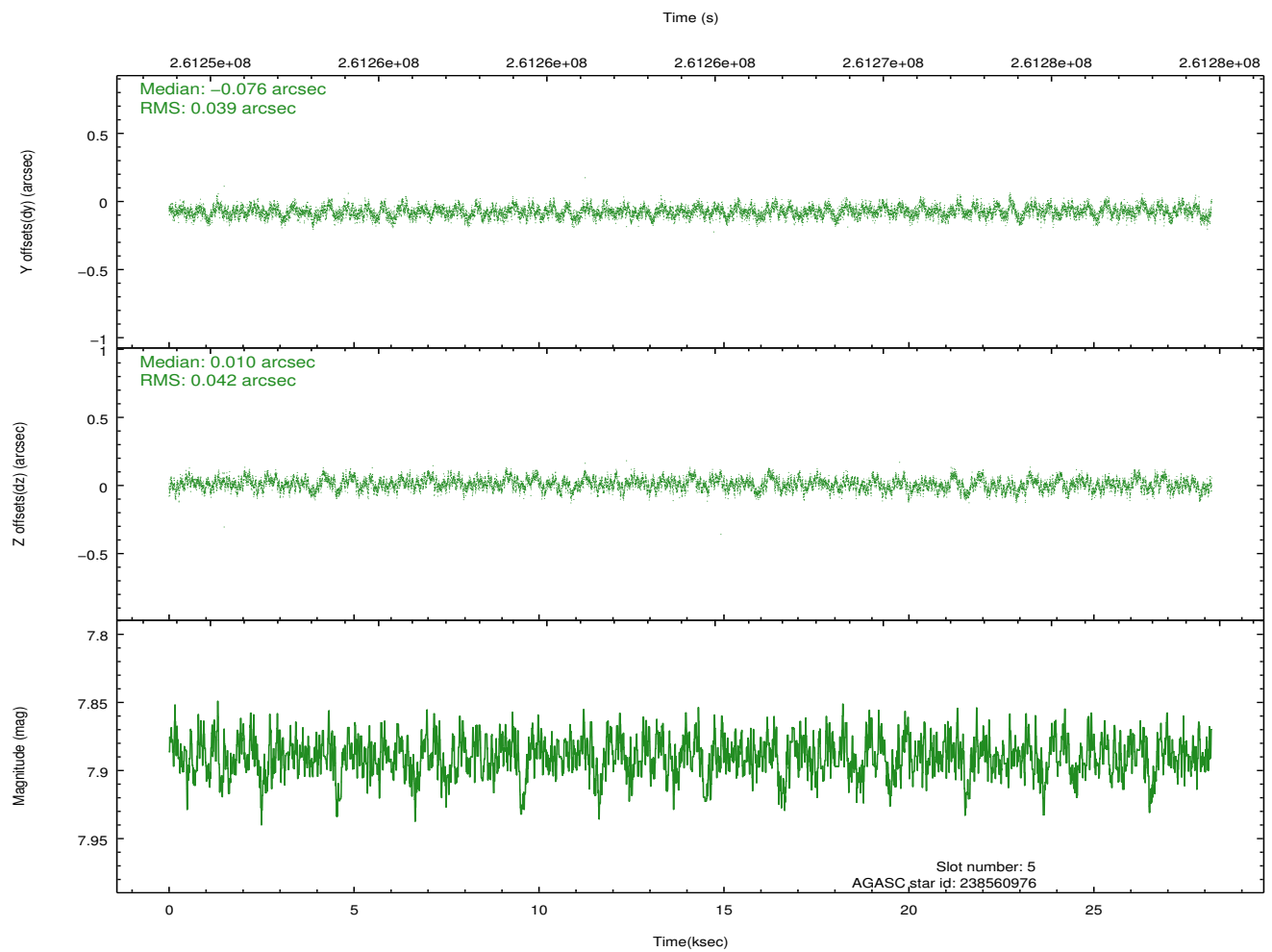
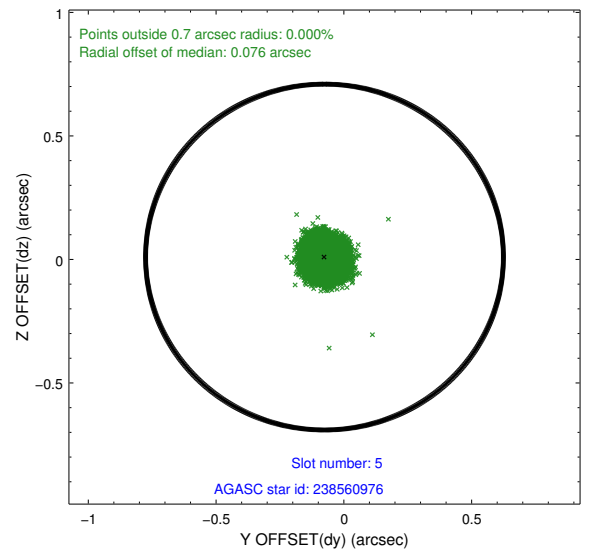
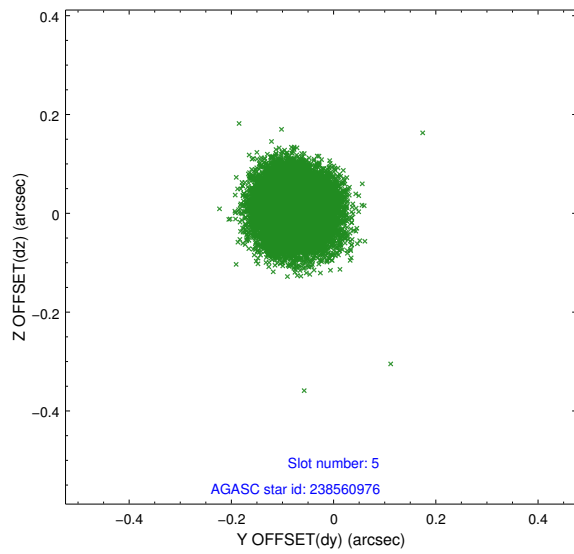
2.4.1 Slot 3



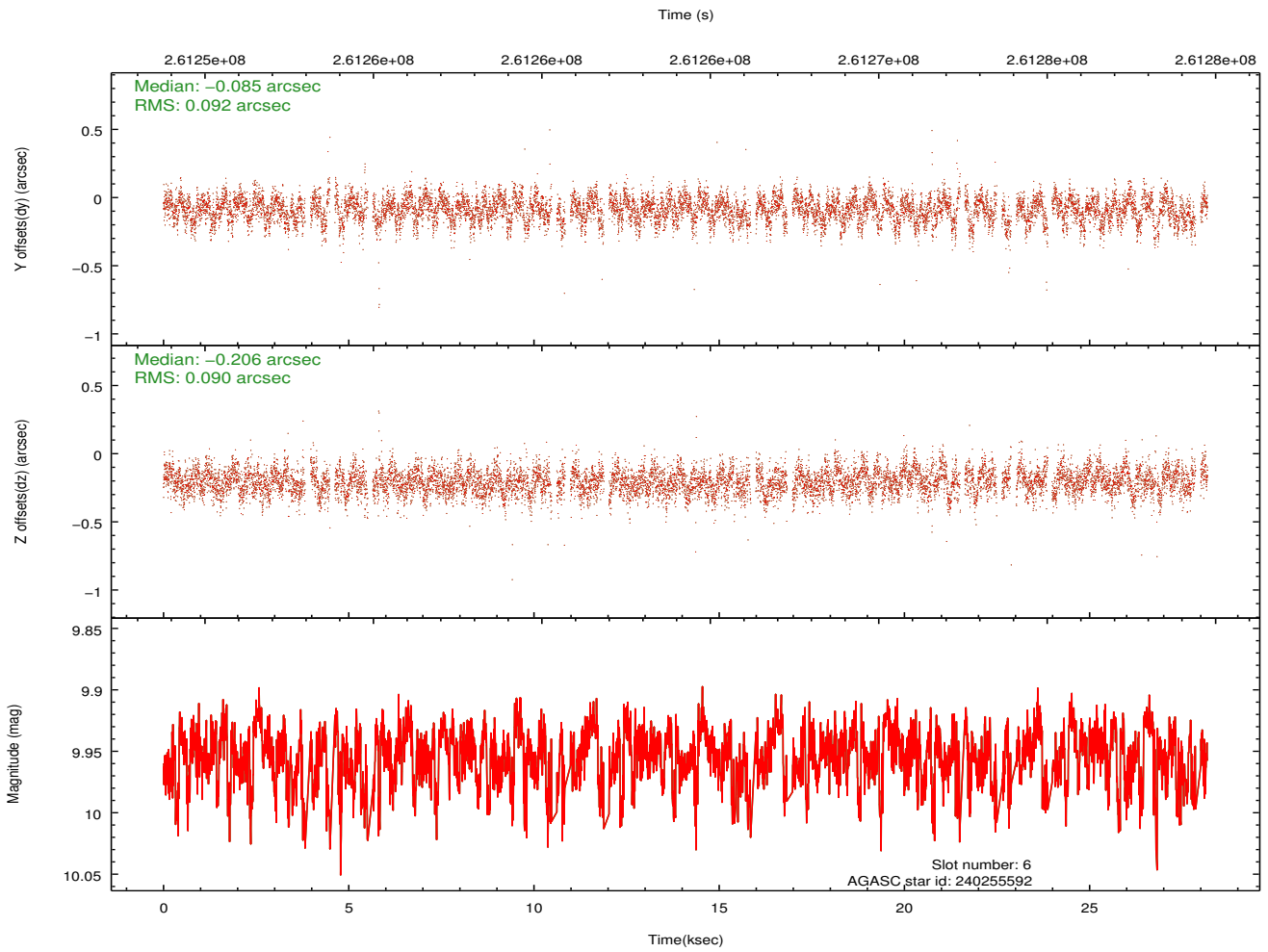
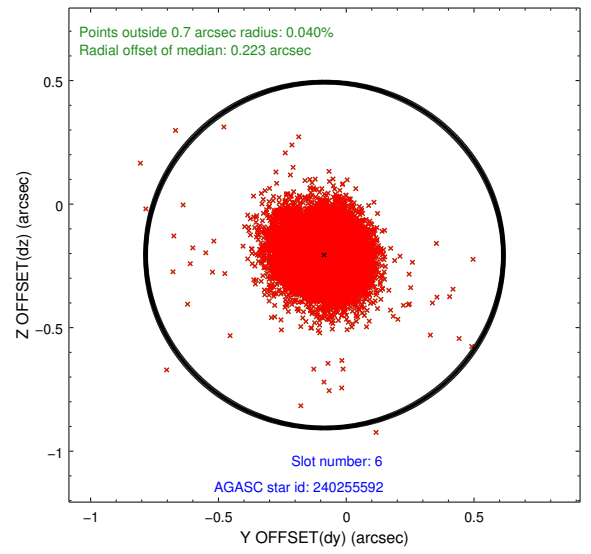
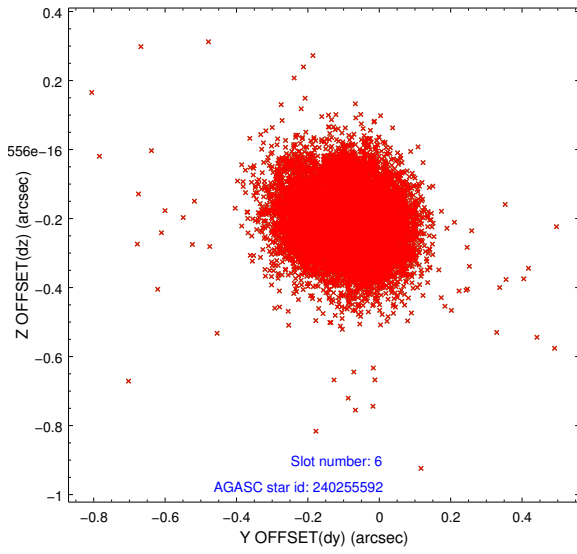
2.4.2 Slot 4



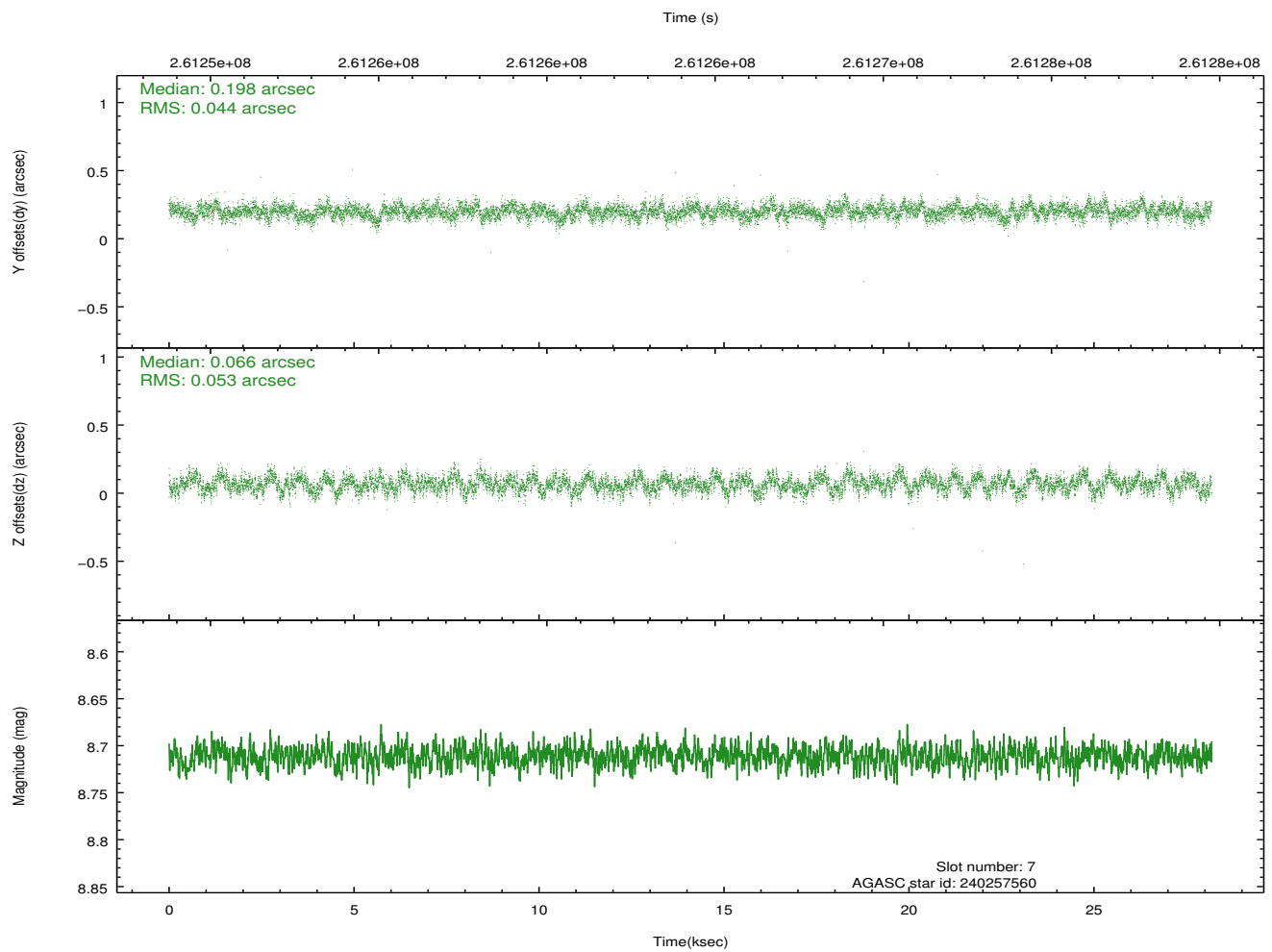
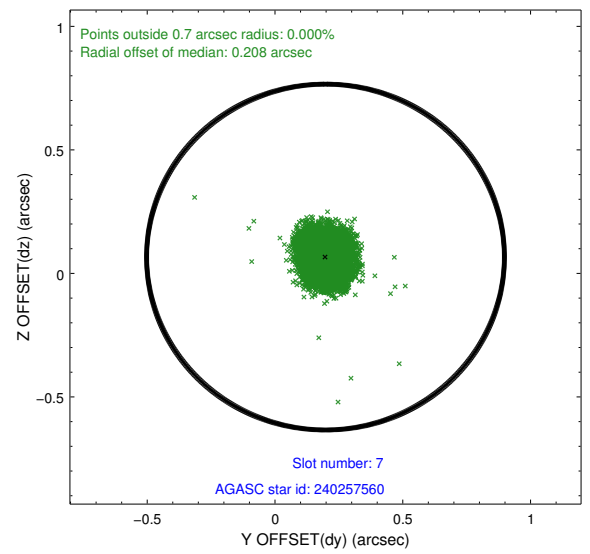
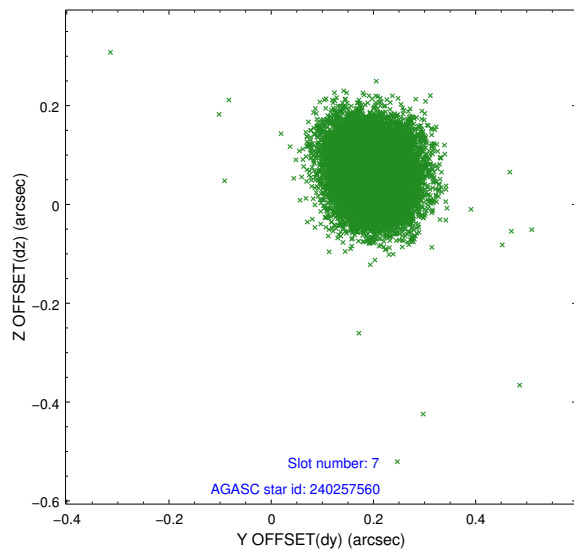
2.4.3 Slot 5



2.4.4 Slot 6

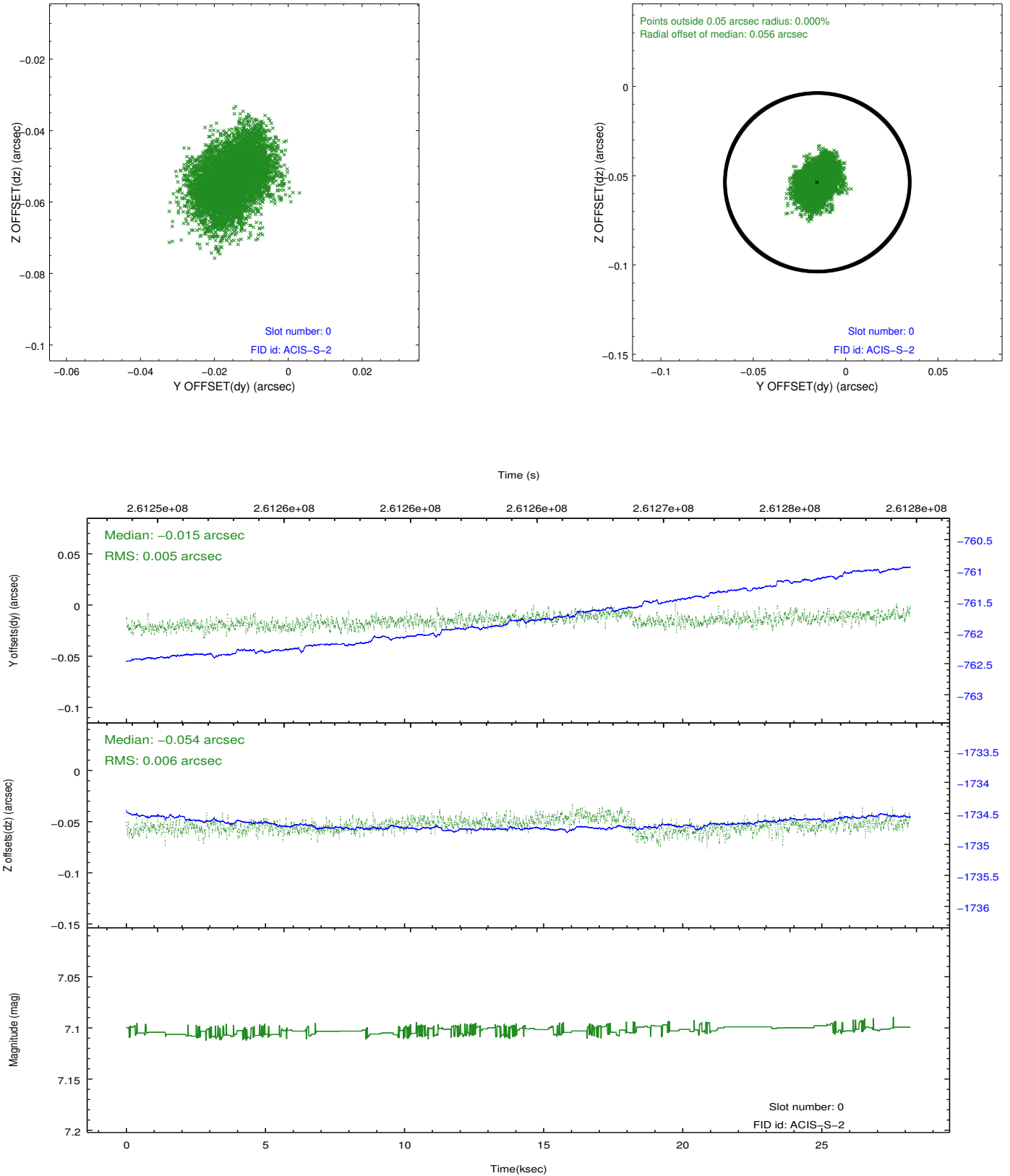


2.4.5 Slot 7

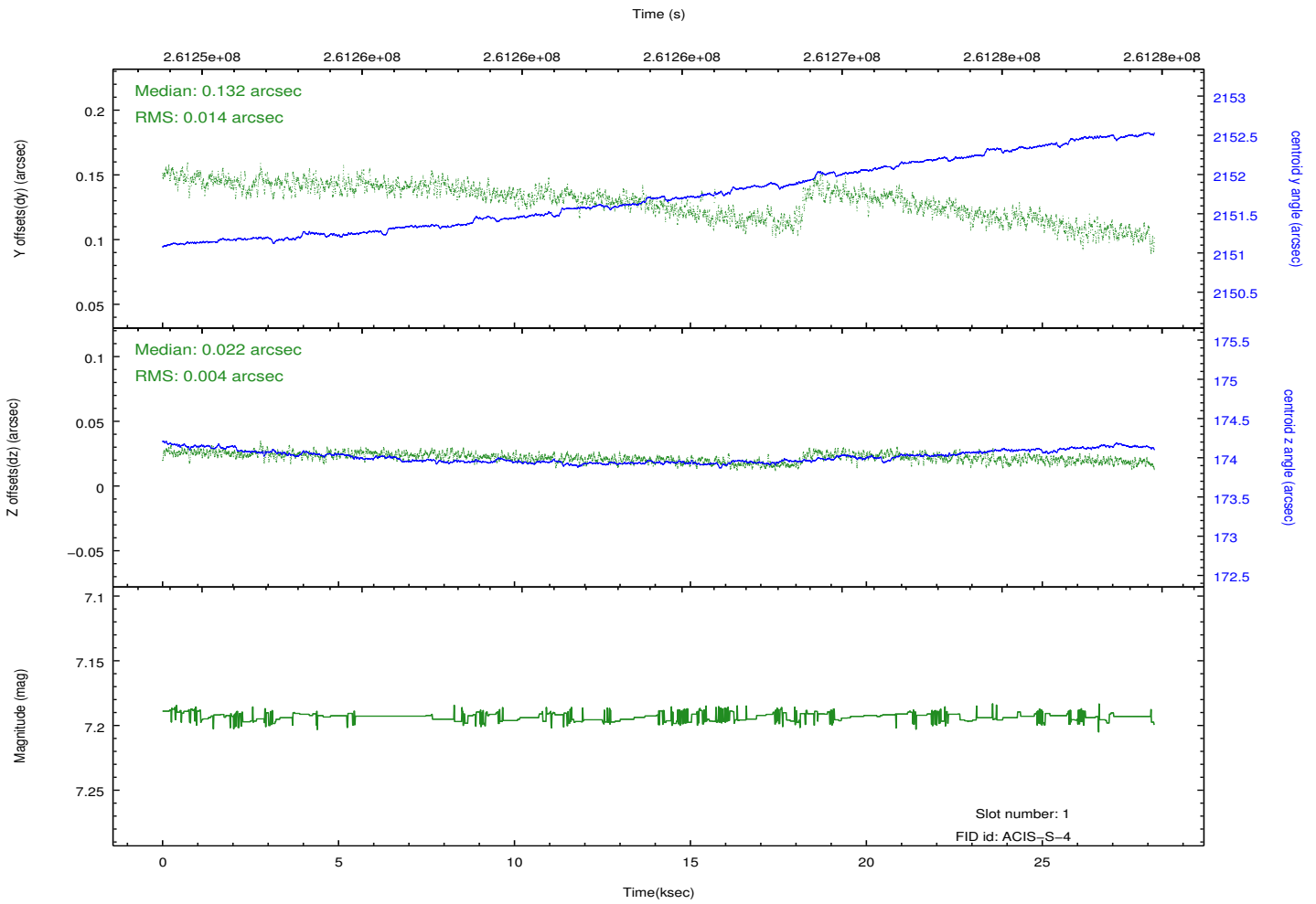
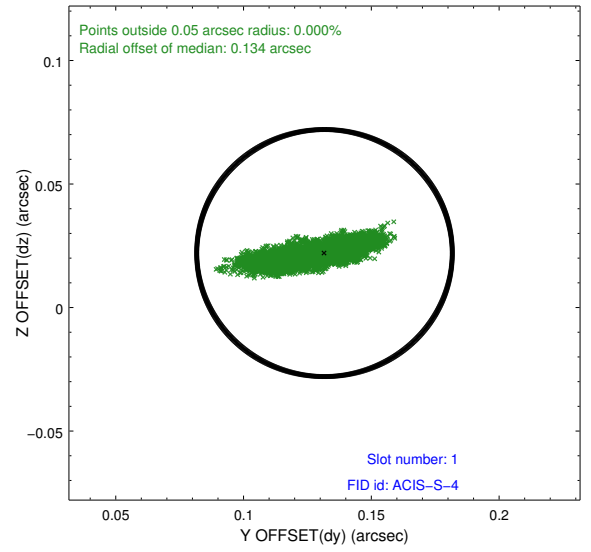
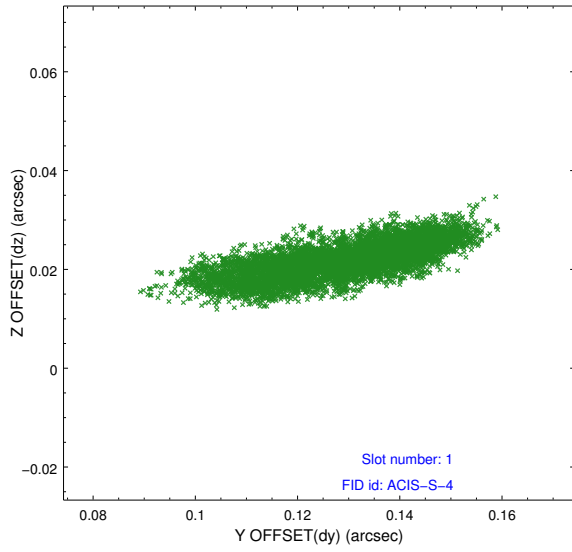


2.5 FID Slots

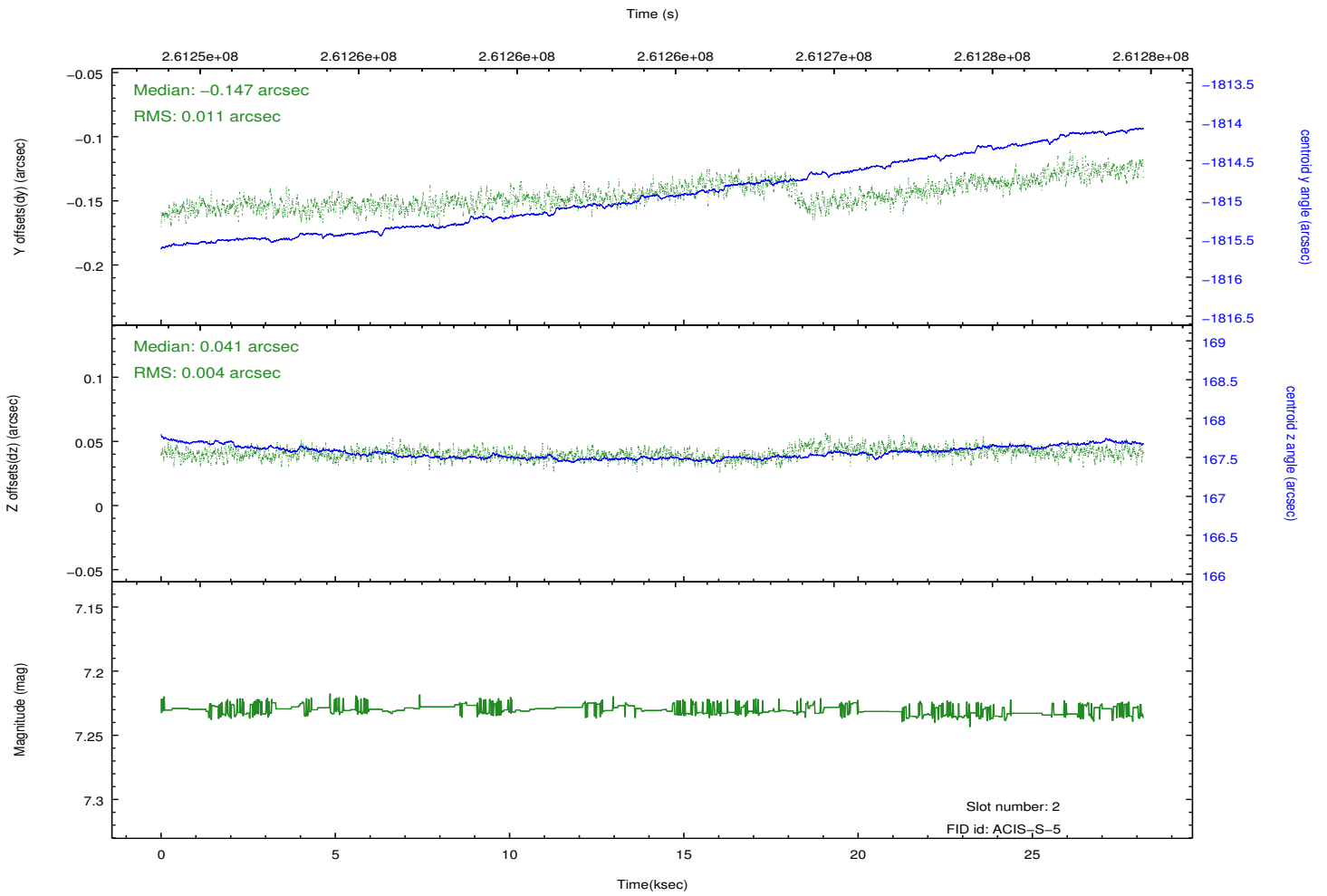
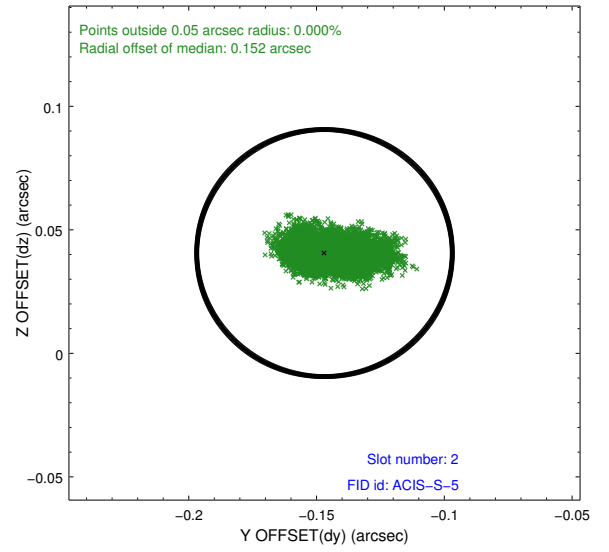
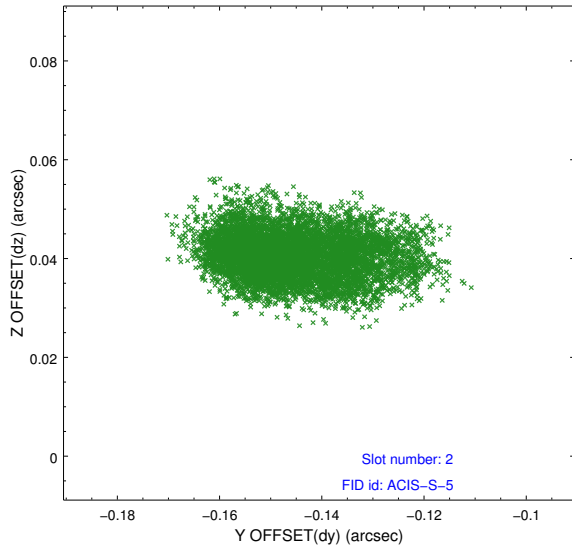
2.5.1 Slot 0



2.5.2 Slot 1



2.5.3 Slot 2



A Summary

A.1 Status

V&V Scientist	Beth Sundheim
V&V Date (YYYY-MM-DD)	2012.04.05
V&V Edition	1
V&V Disposition and Status	OK
V&V Charge Time	28.1789999

A.2 Comments