

V&V Reference Report

L2 ASCDS Version : 8.4.3

Observation 7256 - L2 Version 2
Chandra X-Ray Center

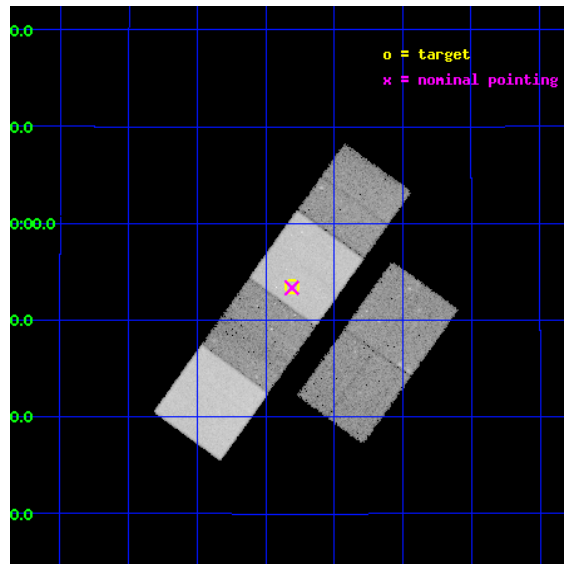
L2 Processing Date : Mar 21 2012

Contents

1	Front	2
2	OBI	3
2.1	OBI	3
2.1.1	Images	3
2.1.2	Bias	3
2.1.3	Parameters	4
2.1.4	Events	4
2.2	Compared Parameters	5
2.3	Aspect	6
2.4	Star Slots	9
2.4.1	Slot 3	9
2.4.2	Slot 4	10
2.4.3	Slot 5	11
2.4.4	Slot 6	12
2.4.5	Slot 7	13
2.5	FID Slots	14
2.5.1	Slot 0	14
2.5.2	Slot 1	15
2.5.3	Slot 2	16
A	Summary	17
A.1	Status	17
A.2	Comments	17

1 Front

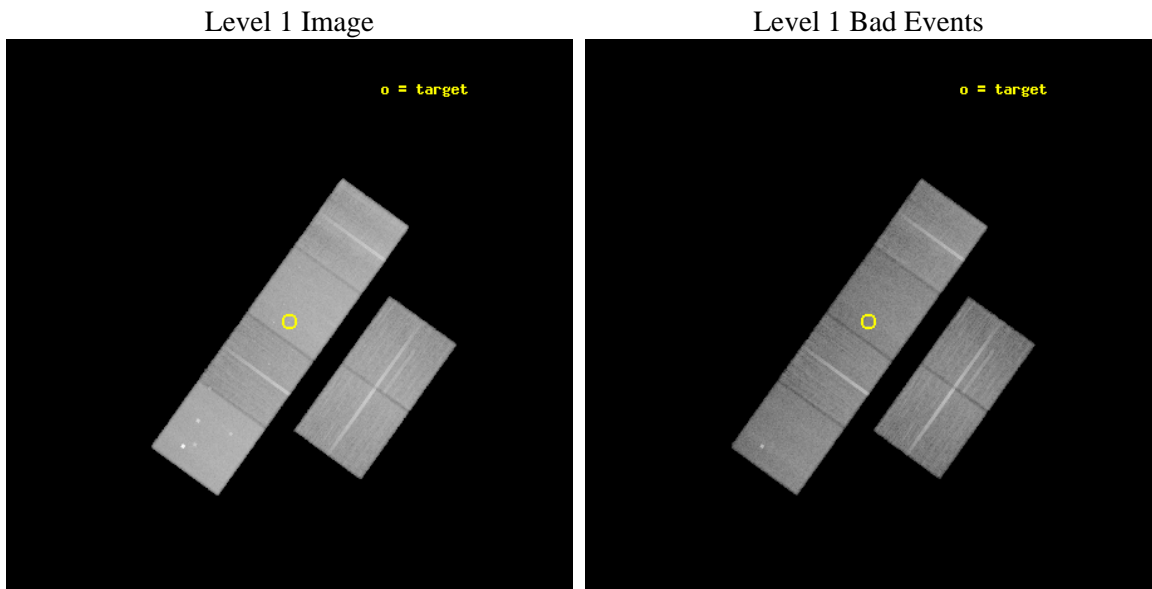
seq_num	500686	Sequence number
obs_id	7256	Observation id
title	A Day in the Life of a Short Gamma-Ray Burst	Proposal title
observer	Prof. David Burrows	Principal investigator
object	GRB 051221	Source name
dtycycle	0	
cycle	P	events from which exps? Prim/Second/Both
ra_targ	328.702917	Observer's specified target RA [deg]
dec_targ	16.891167	Observer's specified target Dec [deg]
ra_nom	328.70227514652	Nominal RA [deg]
dec_nom	16.889183804916	Nominal Dec [deg]
roll_nom	305.72447232323	Nominal Roll [deg]
revision	2	Processing version of data
ontime	30179.199887574	Sum of GTIs [s]
liveltime	29797.052686865	Livetime [s]
ontime2	30172.717947006	Sum of GTIs [s]
ontime3	30179.199887574	Sum of GTIs [s]
ontime5	30179.199887574	Sum of GTIs [s]
ontime6	30179.199887574	Sum of GTIs [s]
ontime7	30179.199887574	Sum of GTIs [s]
ontime8	30172.717936963	Sum of GTIs [s]
l2events	399389	Number of level 2 events



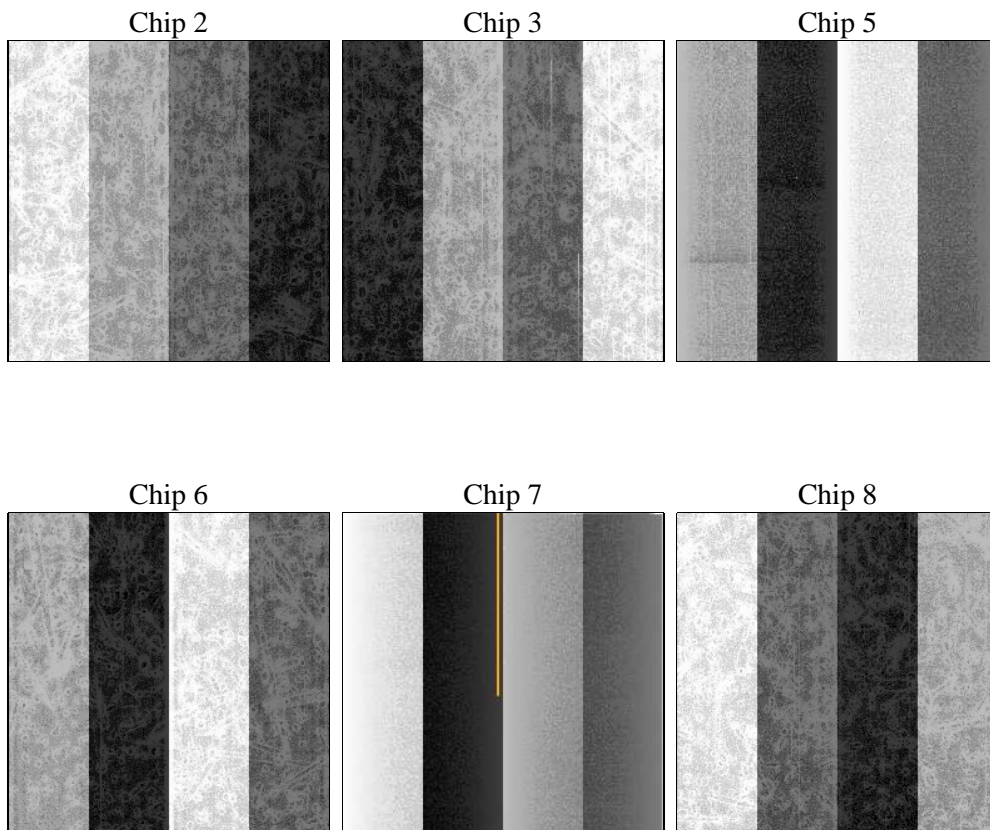
2 OBI

2.1 OBI

2.1.1 Images



2.1.2 Bias



2.1.3 Parameters

obi_num	0	Obi number	sched_exp_time	30000.000000	[s] Scheduled observation exposure time
ascdsver	8.4.3	Processing system revision	ontime	30179.199887574	Sum of GTIs [s]
caldbver	4.4.8	 	ontime2	30172.717947006	Sum of GTIs [s]
date	2012-03-21T03:59:52	Date and time of file creation	ontime3	30179.199887574	Sum of GTIs [s]
revision	2	Processing version of data	ontime5	30179.199887574	Sum of GTIs [s]
			ontime6	30179.199887574	Sum of GTIs [s]
			ontime7	30179.199887574	Sum of GTIs [s]
			ontime8	30172.717936963	Sum of GTIs [s]
			l1events	1754746	Number of level 1 events

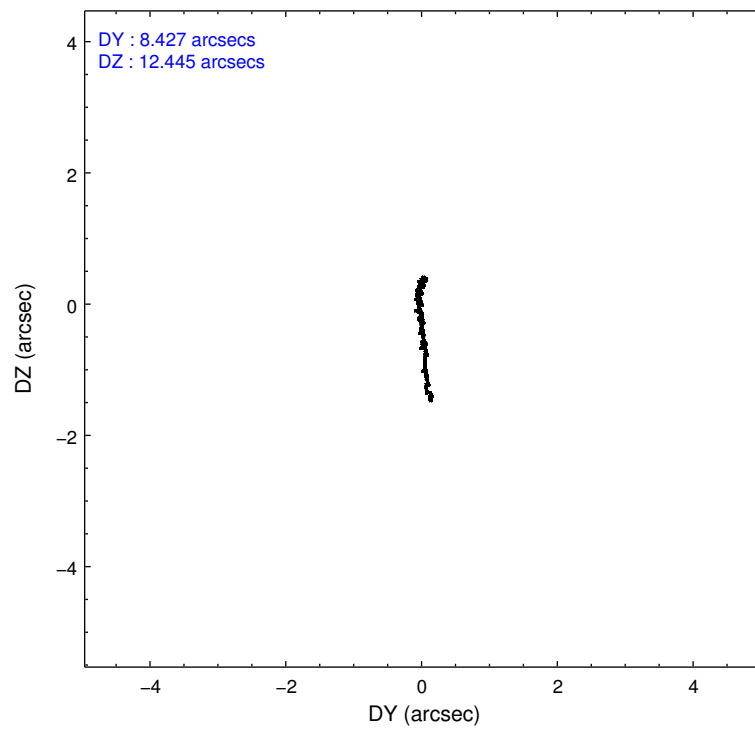
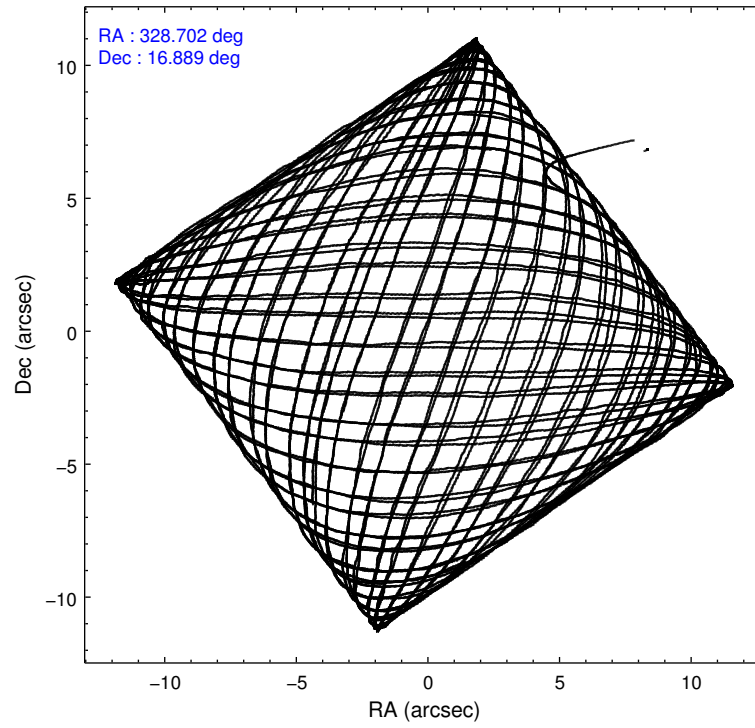
2.1.4 Events

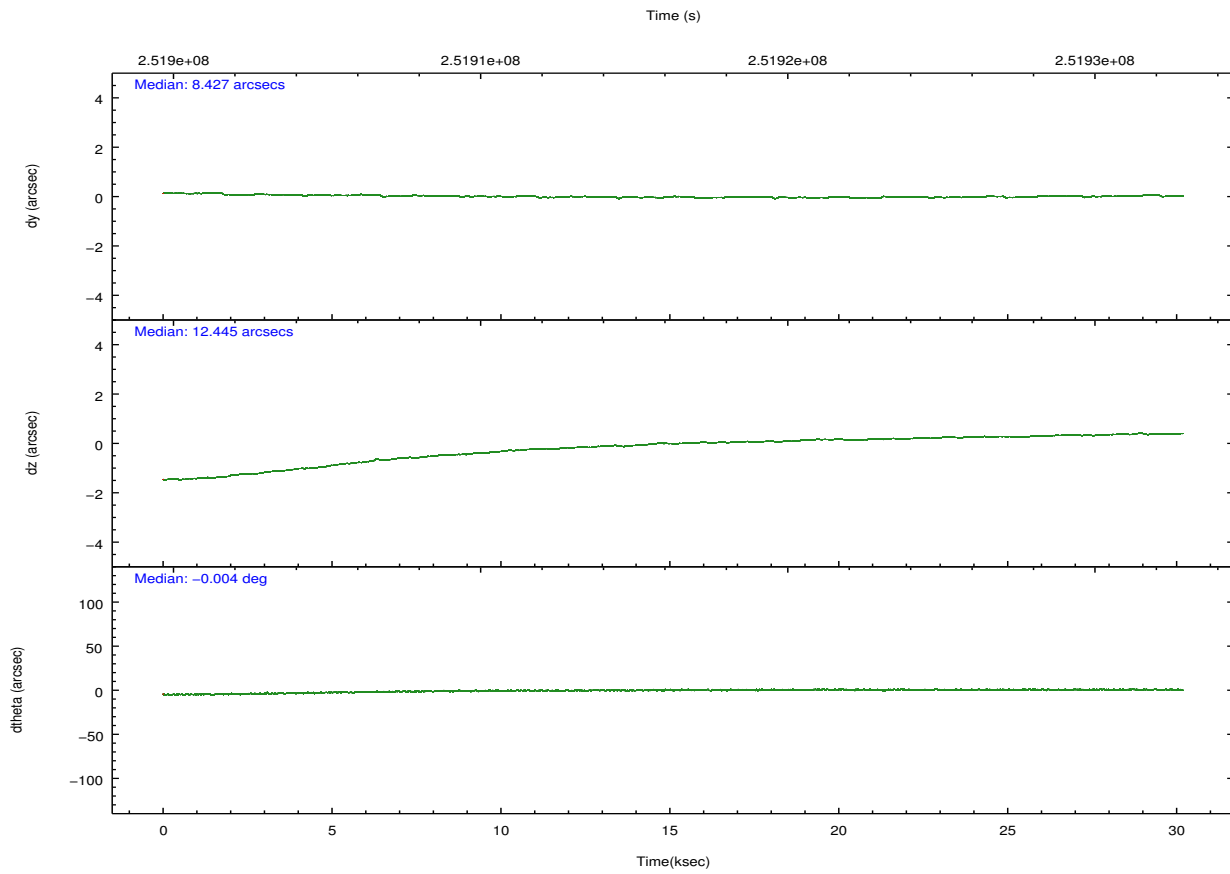
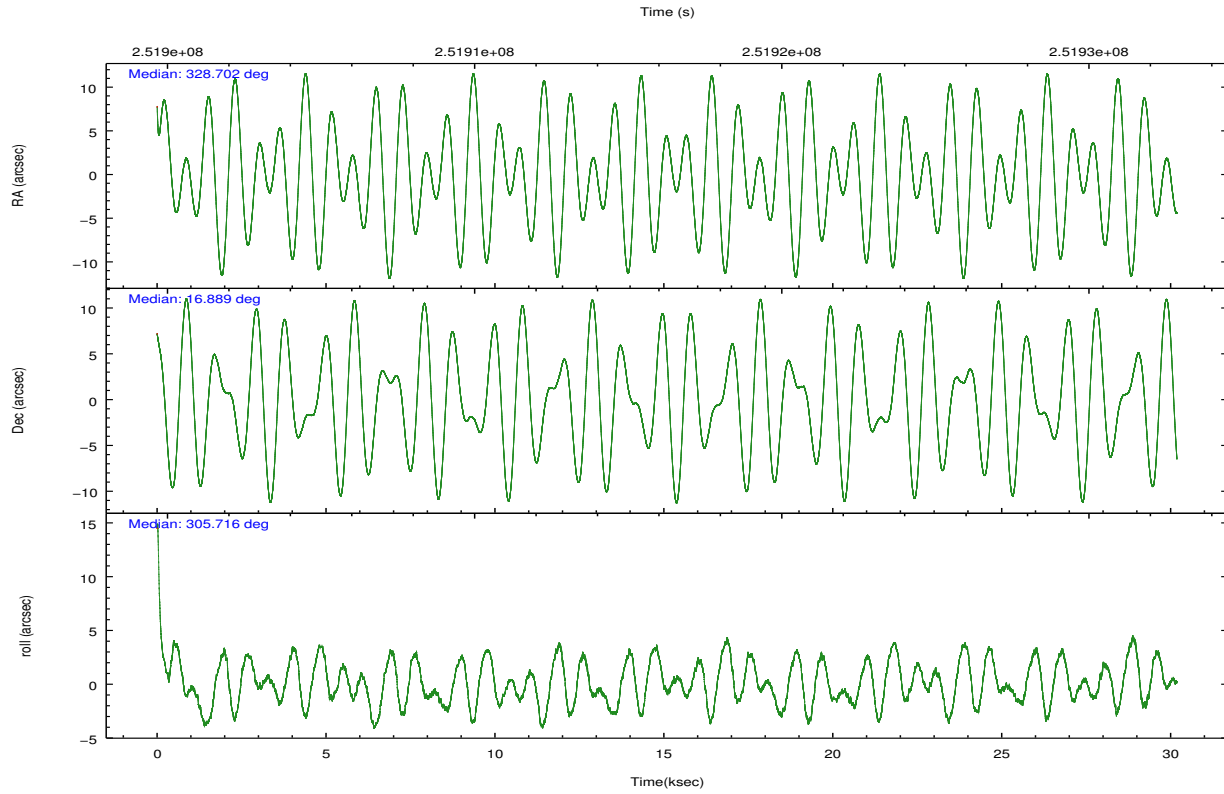
	ccd 2	ccd 3	ccd 5	ccd 6	ccd 7	ccd 8		ccd 2	ccd 3	ccd 5	ccd 6	ccd 7	ccd 8
level 1 events	252195	240781	374311	242424	334716	310319	grade 0 events	12949	13249	16943	11823	12458	20841
rejected events	223345	211495	202112	212669	195641	243818		5%	5%	4%	4%	3%	6%
rejected %	88%	87%	53%	87%	58%	78%	grade 1 events	170	171	1721	129	338	218
								0%	0%	0%	0%	0%	0%
							grade 2 events	6093	5650	53902	6288	28188	15141
								2%	2%	14%	2%	8%	4%
							grade 3 events	2614	2738	6660	2922	12308	6921
								1%	1%	1%	1%	3%	2%
							grade 4 events	2648	2673	6230	2721	12017	6401
								1%	1%	1%	1%	3%	2%
							grade 5 events	9400	11081	27153	11428	31791	14853
								3%	4%	7%	4%	9%	4%
							grade 6 events	4651	5101	89230	6102	74673	17508
								1%	2%	23%	2%	22%	5%
							grade 7 events	213670	200118	172472	201011	162943	228436
								84%	83%	46%	82%	48%	73%

2.2 Compared Parameters

Parameter	Planned	Actual	Parameter	Planned	Actual
Instrument	ACIS	ACIS	Obspar format version number	7	7
Detector	ACIS-235678	ACIS-235678	Obspar file type	PREDICTED	ACTUAL
Grating	NONE	NONE	Obspar update status	NONE	UPDATED
Data mode	FAINT	FAINT	Number of optional ACIS chips dropped	0	0
Observation mode	POINTING	POINTING	On-chip summing requested	N	N
[deg] Pointing RA	328.676155	328.7022751465174	Subarray requested	NONE	NONE
[deg] Pointing Dec	16.900044	16.88918380491616	Alternating exposures requested	N	N
[deg] Pointing Roll	305.575429	305.7244723232304	[s] Primary exposure time	0.000000	3.2
[mm] SIM focus pos	-0.684267	-0.6828225247311905			
[mm] SIM defocus	0	0.001444936568705701			
[mm] SIM translation stage pos	-190.132523	-190.1400660498719			
[mm] SIM translation stage offset	0	0.00754346686406393			
[s] Observation start time (MET)	251901355.184000	251900220.02749			
Observation start date	2005-12-25T12:34:51	2005-12-25T12:17:00			
[s] Observation end time (MET)	251931355.184000	251932384.52898			
Observation end date	2005-12-25T20:54:51	2005-12-25T21:13:04			
Read mode	TIMED	TIMED			

2.3 Aspect



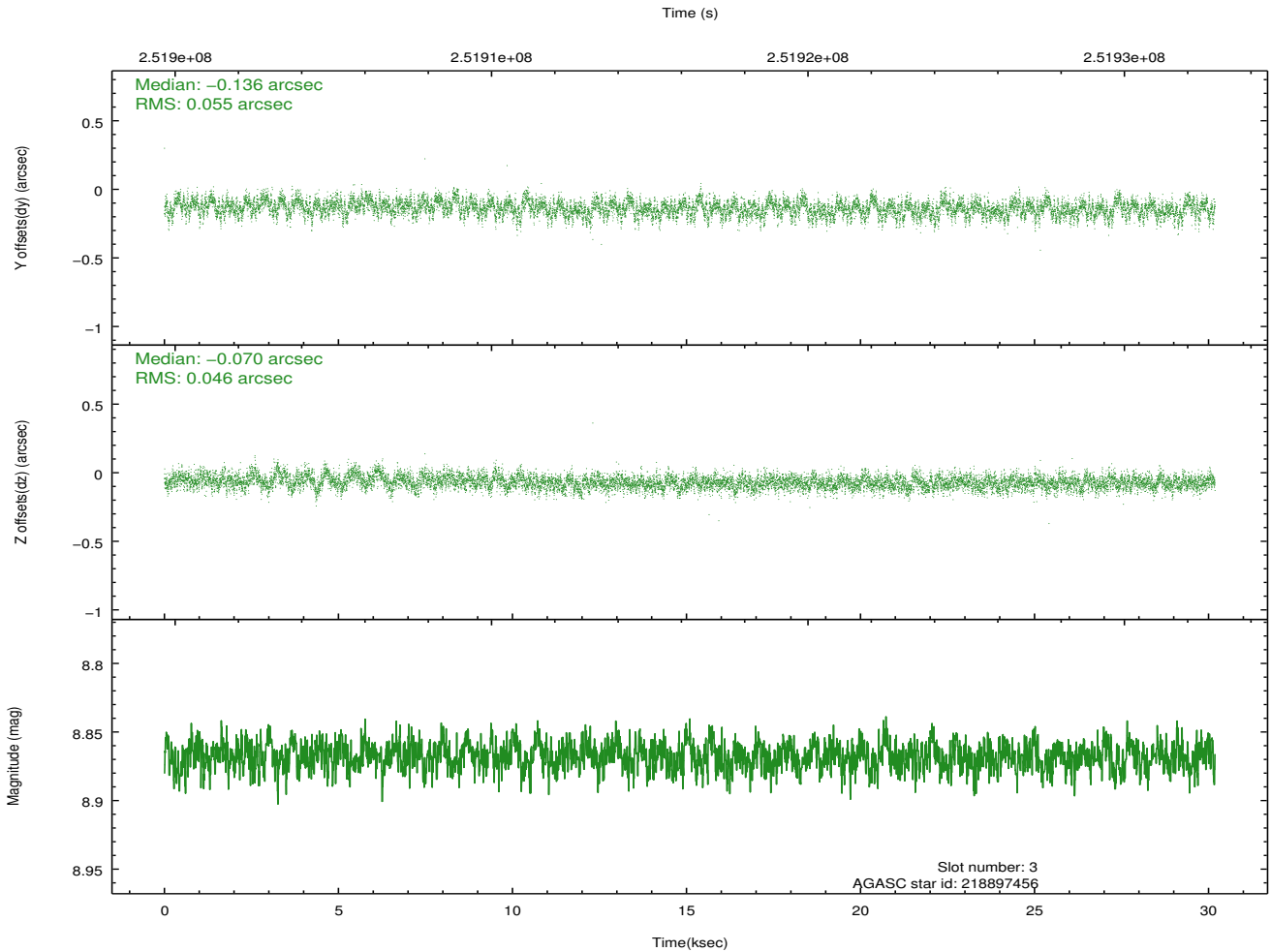
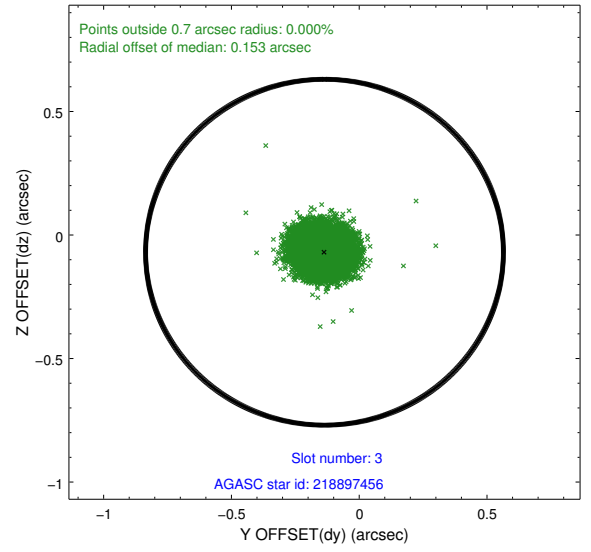
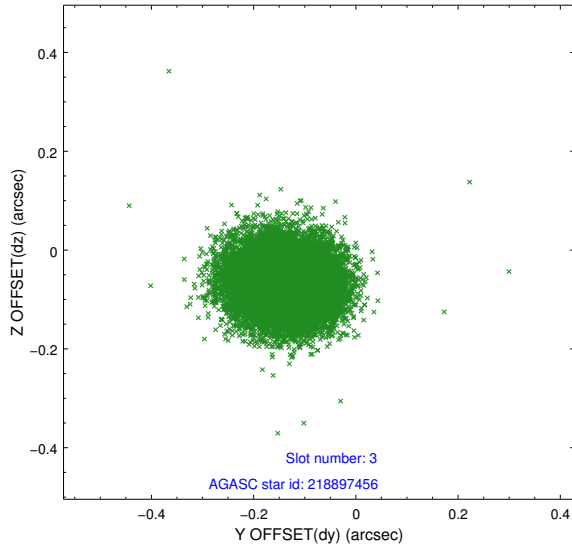


Slot Statistics

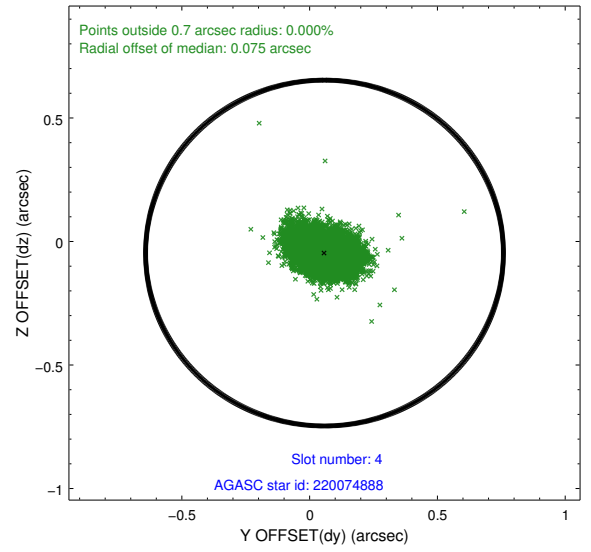
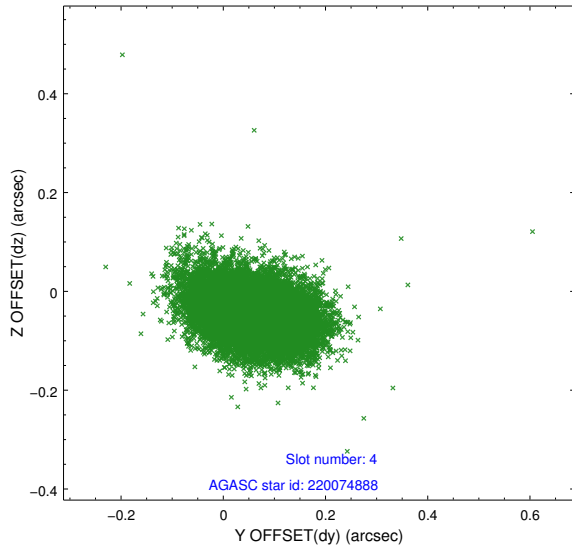
slot	status	id	mag	n_pts	med_dy	med_dz	dr1	dr2	ra	dec	mean_y	mean_z
0	FID	ACIS-S-2	7.10	7362	-0.012	-0.044	0.019	0.041	0.000000	0.000000	-761.25	-1733.56
1	FID	ACIS-S-4	7.20	7363	0.118	0.017	0.008	0.019	0.000000	0.000000	2152.13	174.89
2	FID	ACIS-S-5	7.23	7361	-0.137	0.035	0.019	0.040	0.000000	0.000000	-1814.11	168.67
3	GUIDE	218897456	8.87	14720	-0.136	-0.070	0.076	0.123	327.959264	17.146658	-2160.09	-1487.03
4	GUIDE	220074888	8.69	14718	0.058	-0.047	0.081	0.135	328.463360	16.092578	1936.32	-2289.46
5	GUIDE	220595632	9.29	14716	0.057	0.218	0.102	0.195	328.930788	17.108977	-102.11	1150.75
6	GUIDE	220071528	8.64	14722	0.124	-0.090	0.062	0.101	328.933551	16.712940	1064.02	330.52
7	GUIDE	220597856	9.32	14709	-0.102	-0.010	0.098	0.154	329.110726	17.405179	-612.05	2273.14

2.4 Star Slots

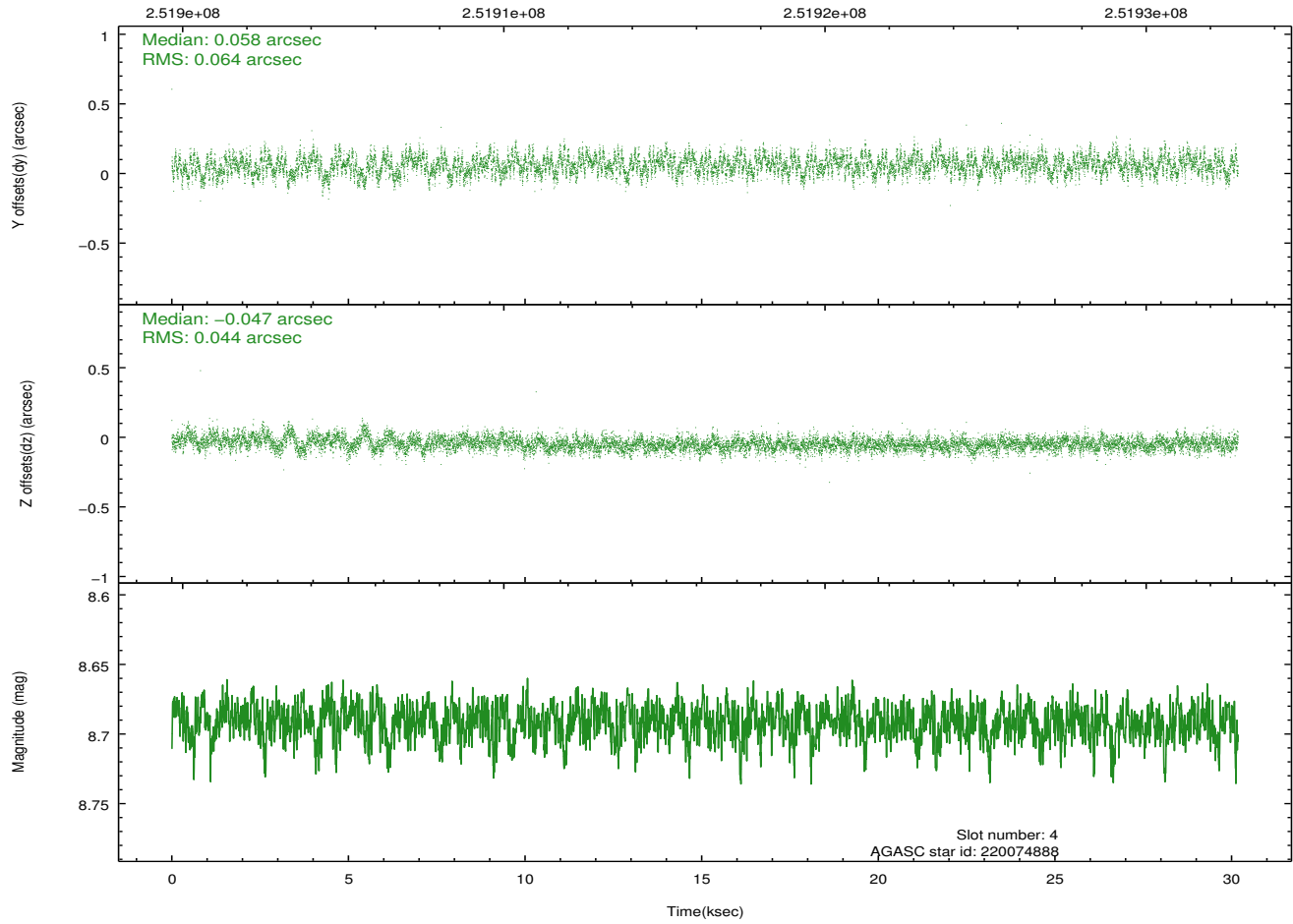
2.4.1 Slot 3



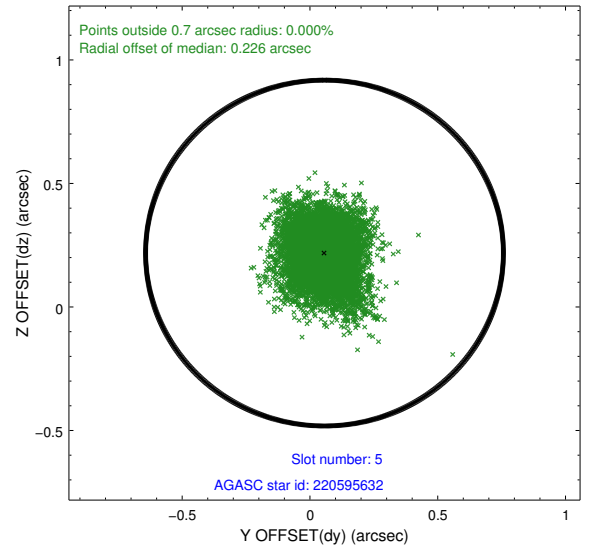
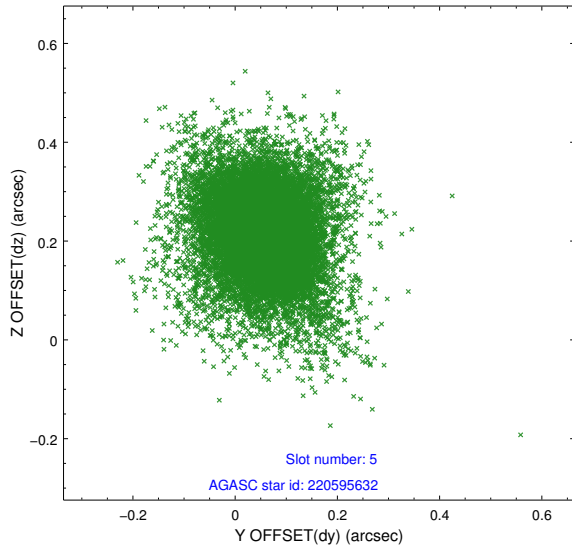
2.4.2 Slot 4



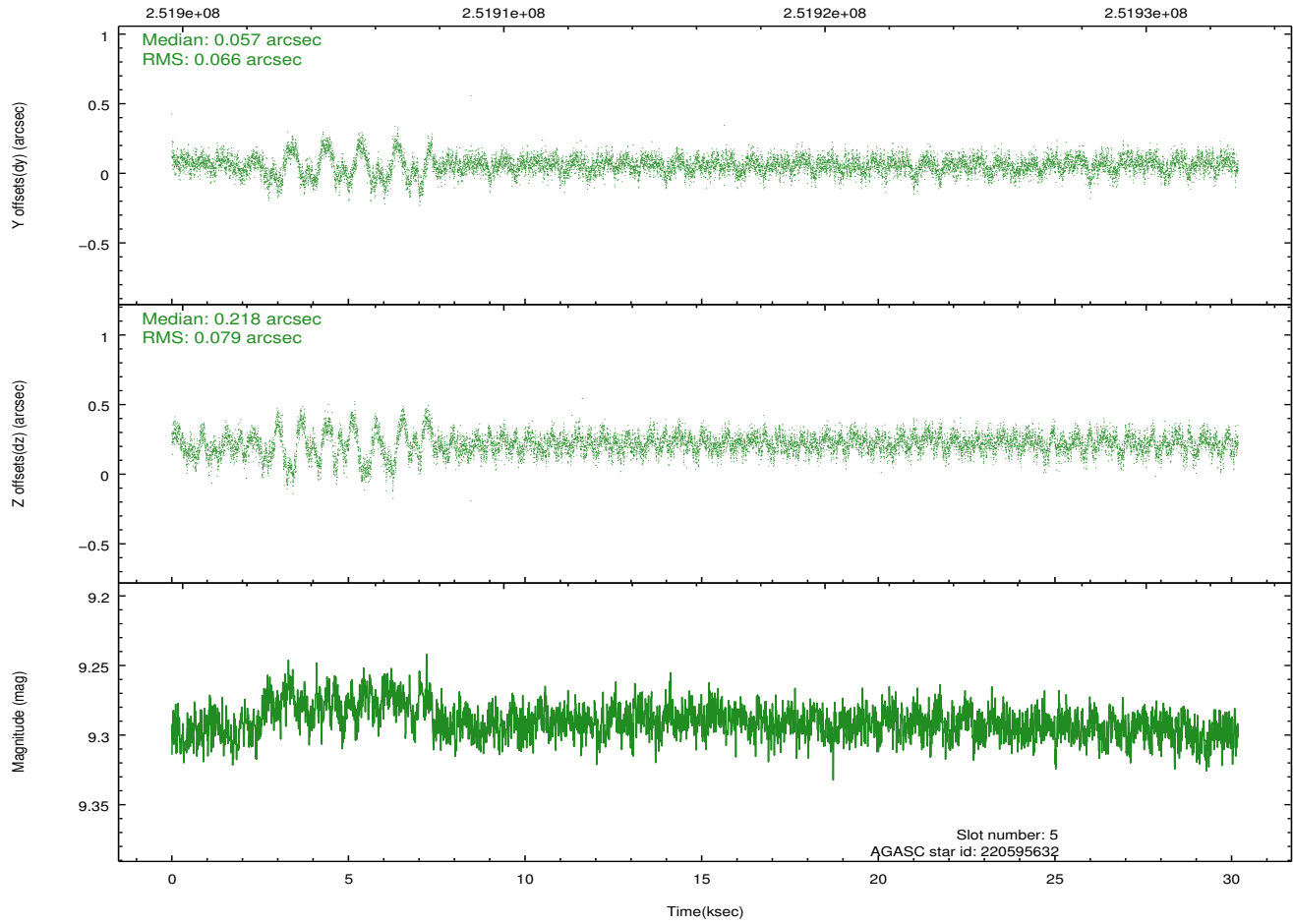
Time (s)



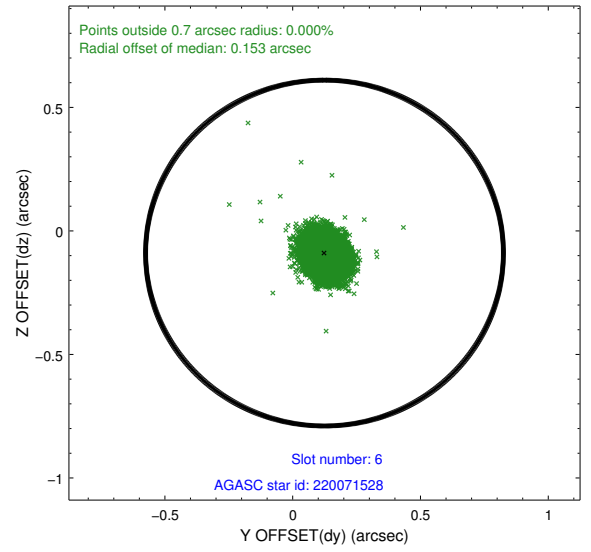
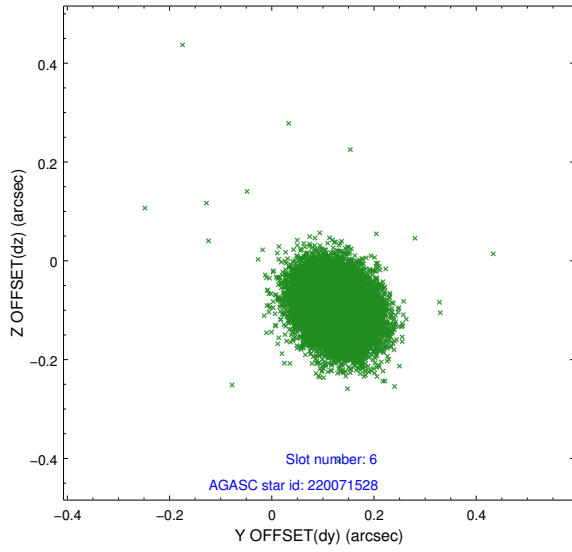
2.4.3 Slot 5



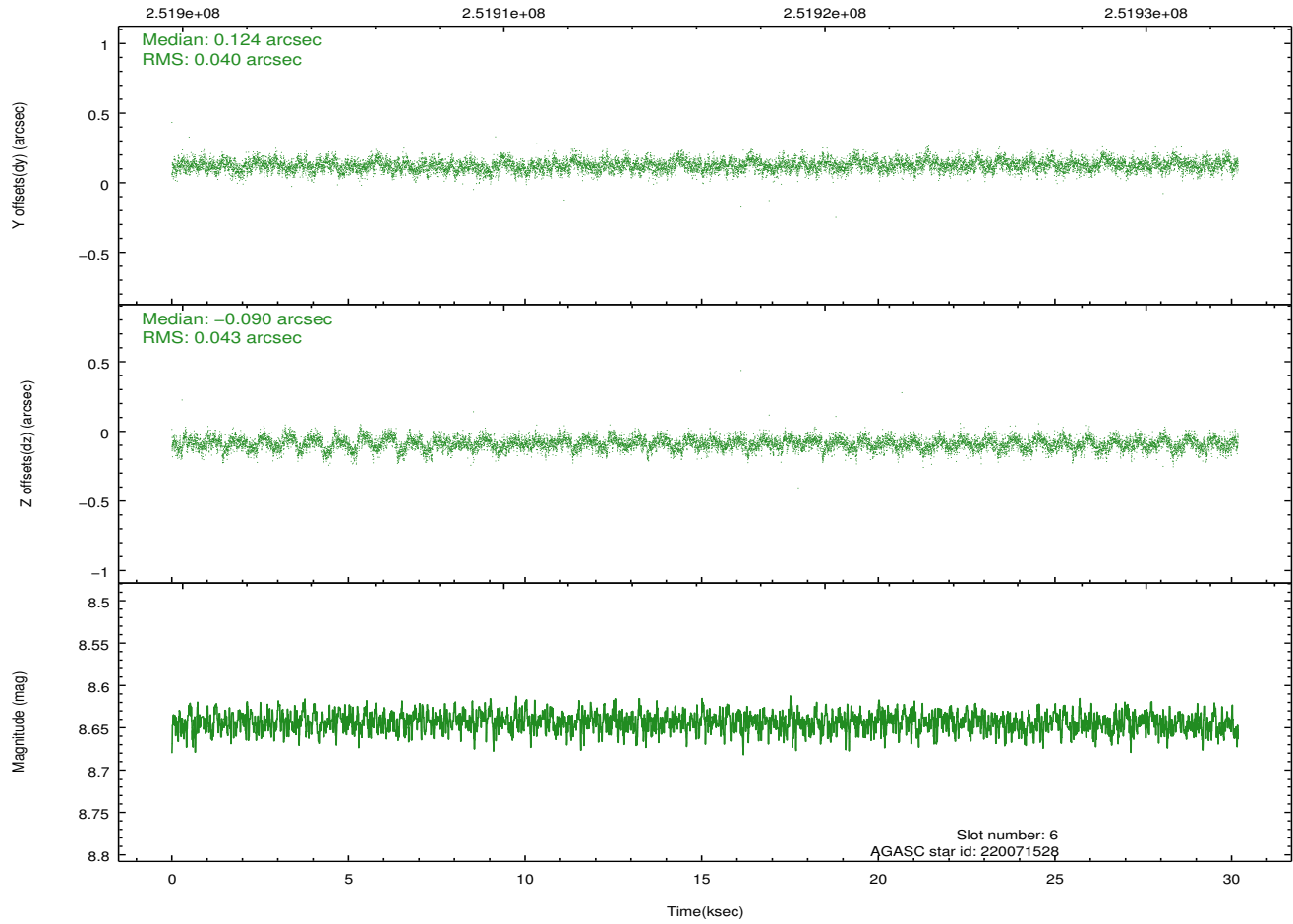
Time (s)



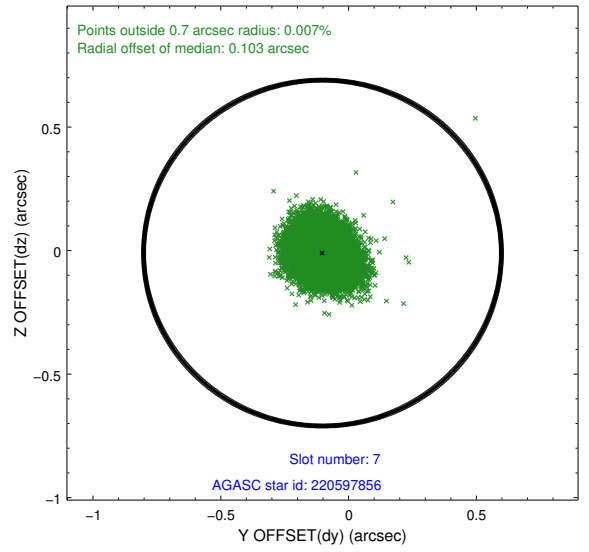
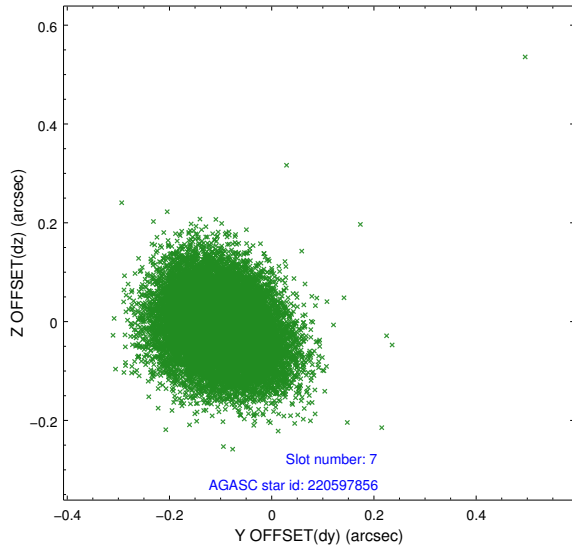
2.4.4 Slot 6



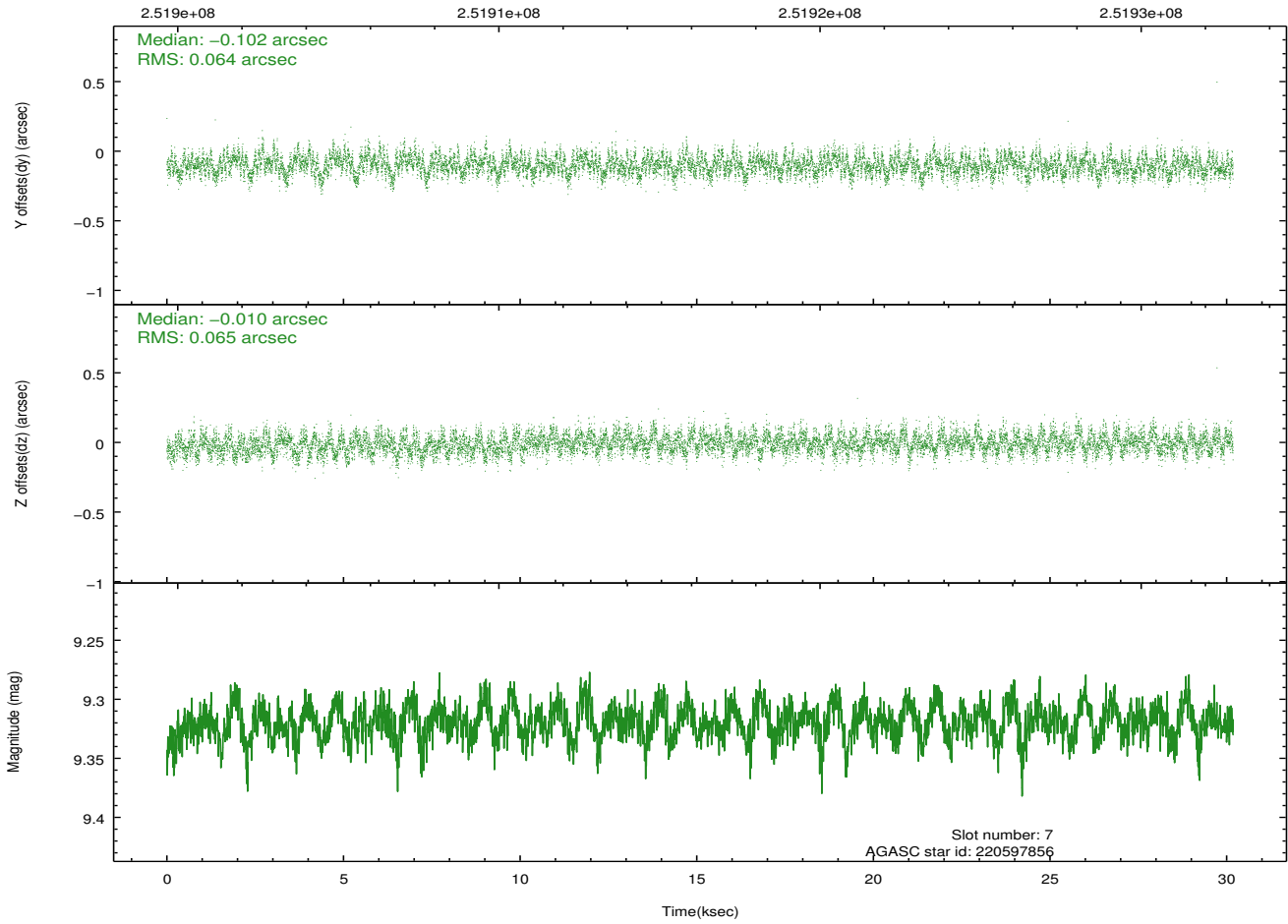
Time (s)



2.4.5 Slot 7

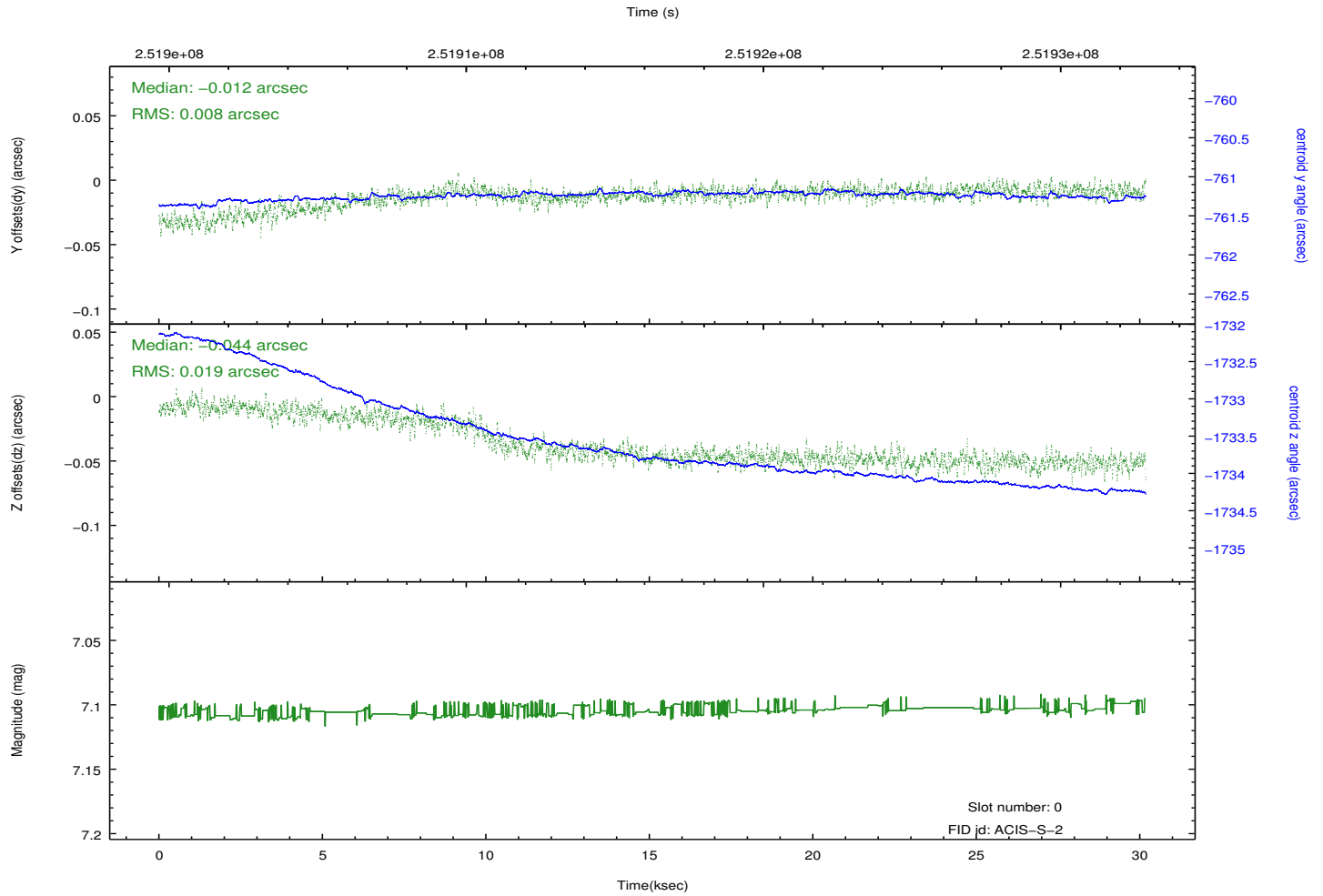
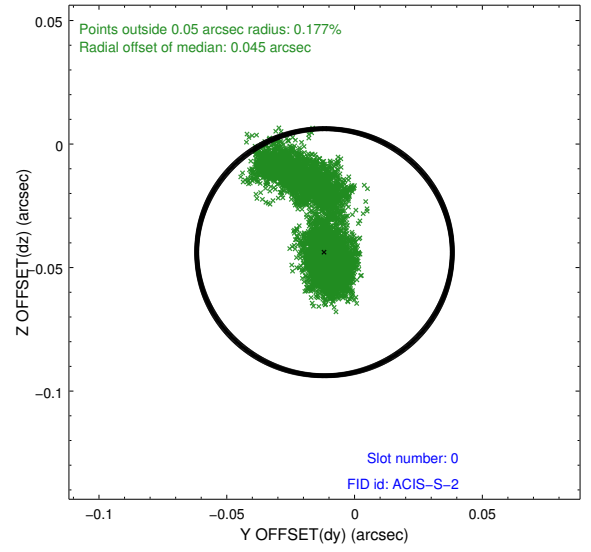
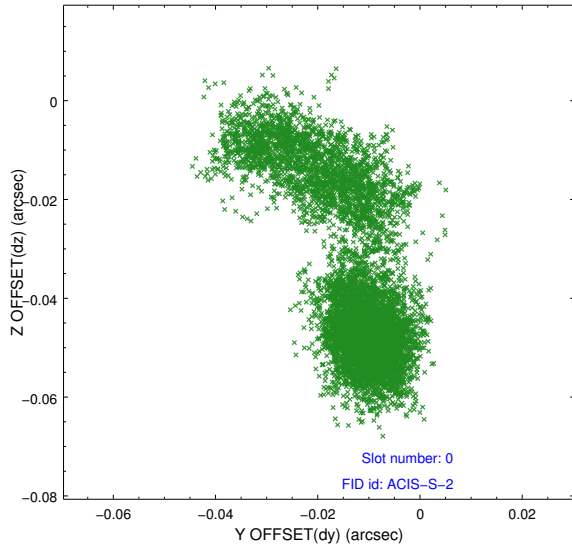


Time (s)

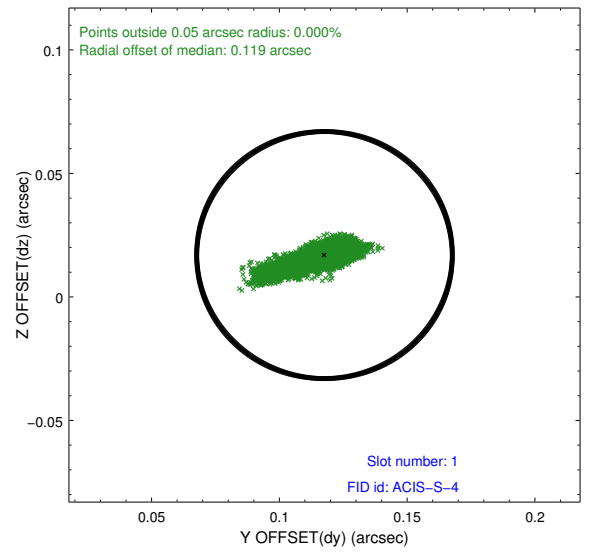
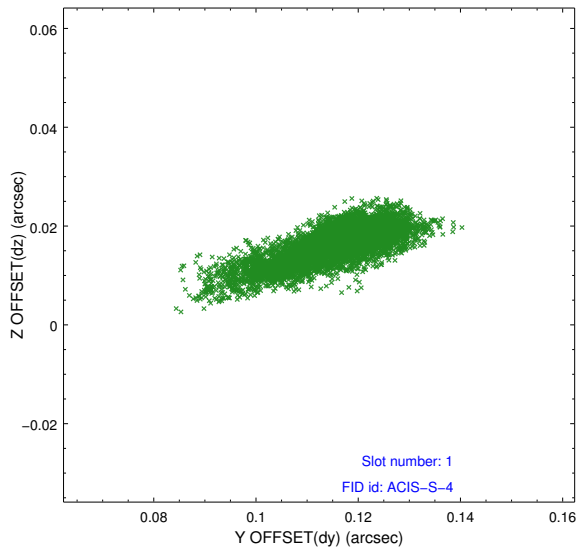


2.5 FID Slots

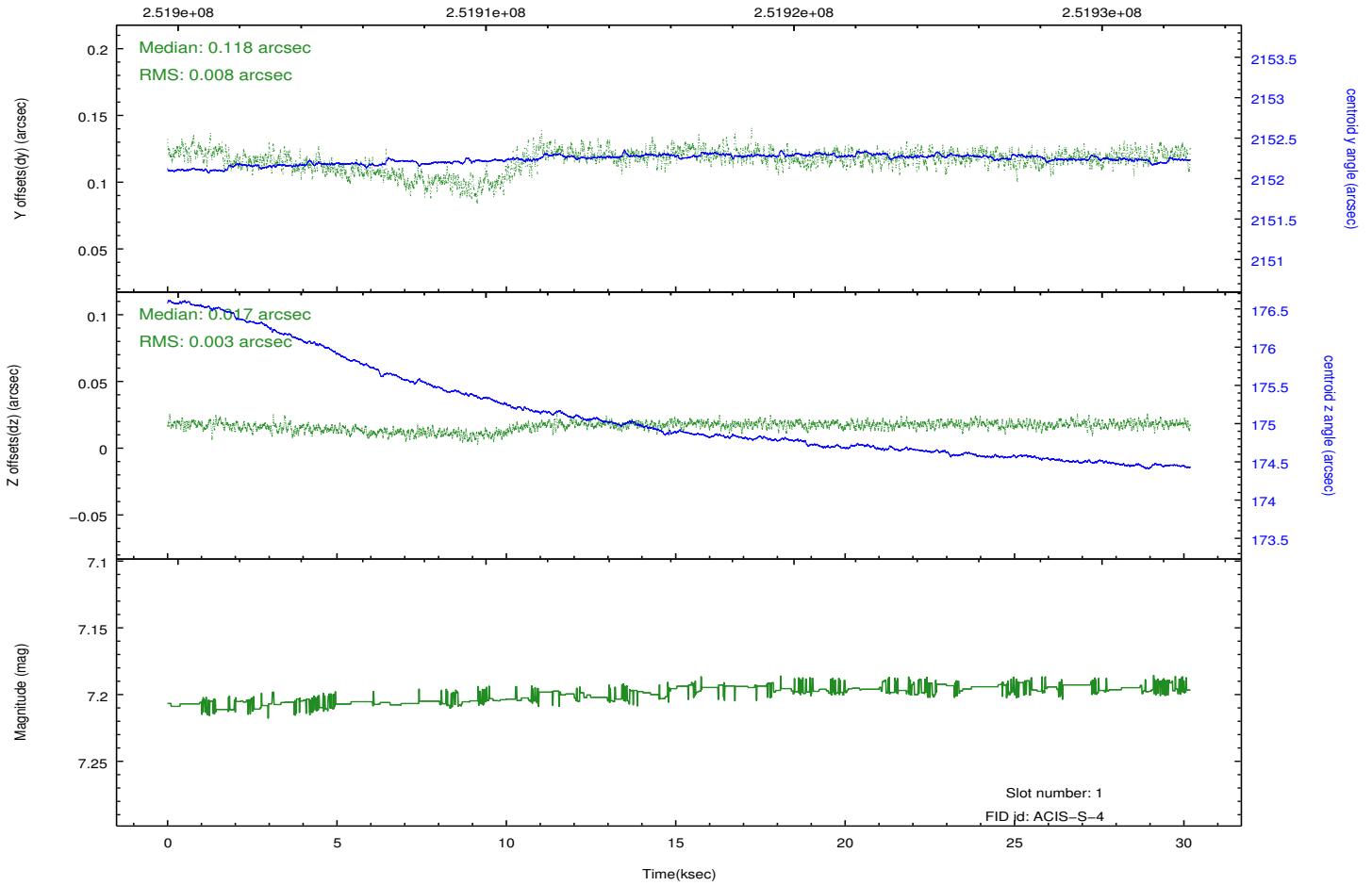
2.5.1 Slot 0



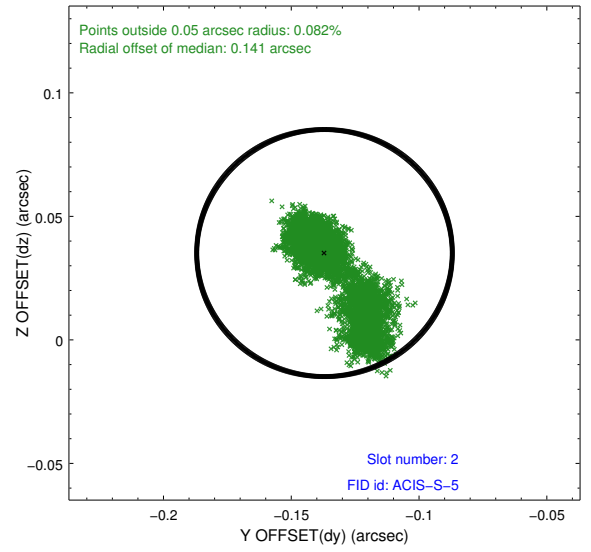
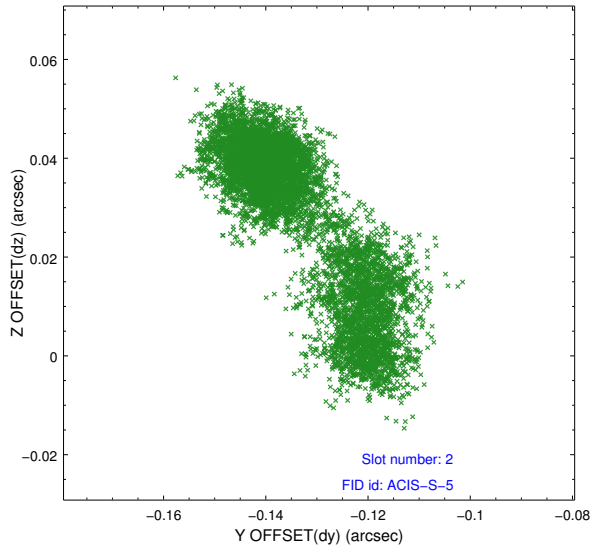
2.5.2 Slot 1



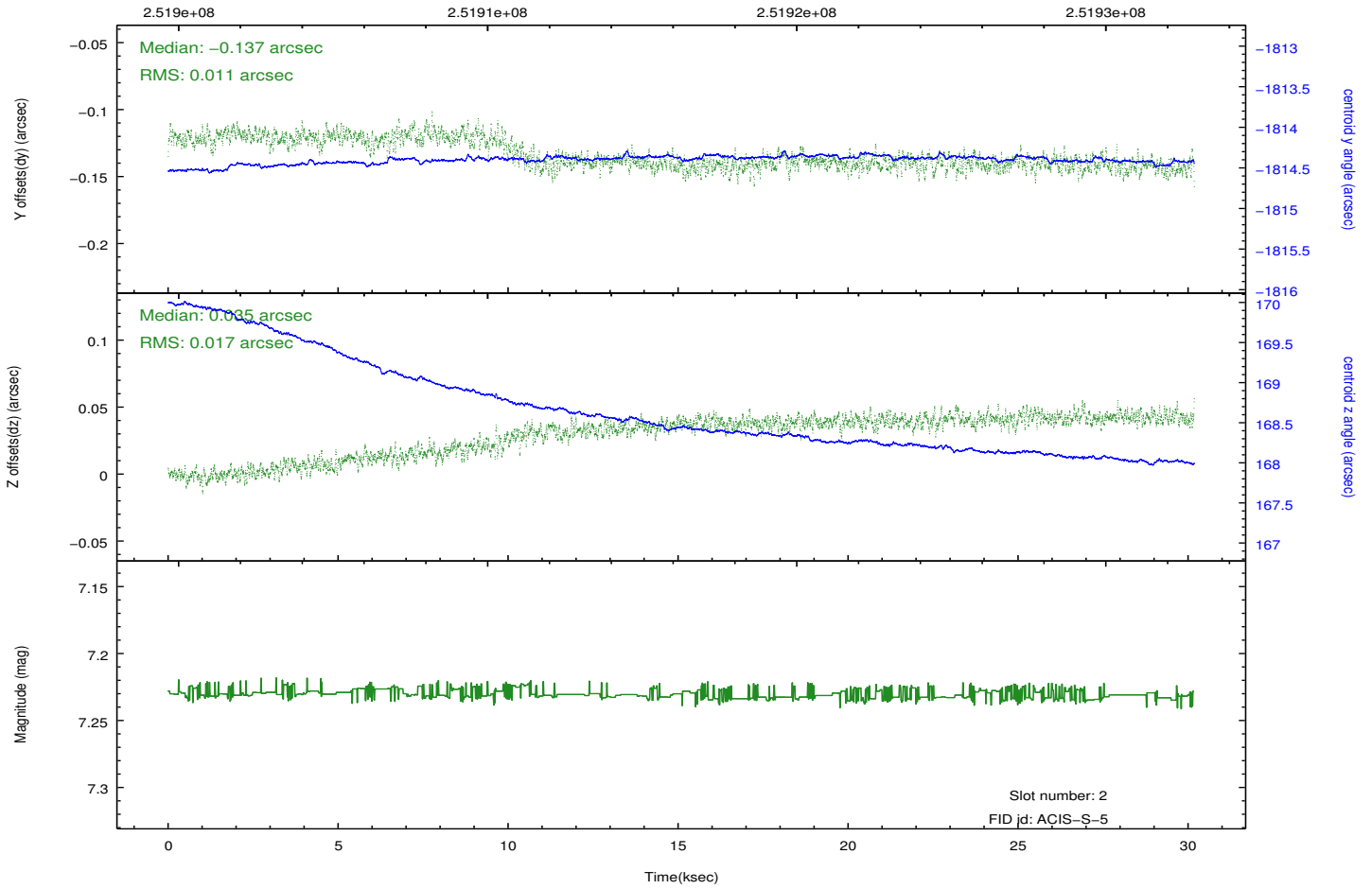
Time (s)



2.5.3 Slot 2



Time (s)



A Summary

A.1 Status

V&V Scientist	Beth Sundheim
V&V Date (YYYY-MM-DD)	2012.03.21
V&V Edition	1
V&V Disposition and Status	OK
V&V Charge Time	30.17919

A.2 Comments