

V&V Reference Report

L2 ASCDS Version : 8.4.4

Observation 7286 - L2 Version 5
Chandra X-Ray Center

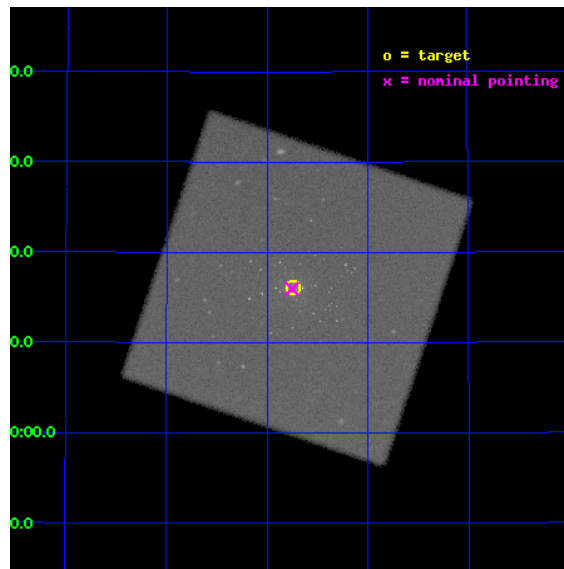
L2 Processing Date : Aug 11 2012

Contents

1	Front	2
2	OBI	3
2.1	OBI	3
2.1.1	Images	3
2.1.2	Parameters	4
2.1.3	Events	4
2.2	Compared Parameters	5
2.3	Aspect	6
2.4	Star Slots	9
2.4.1	Slot 3	9
2.4.2	Slot 4	10
2.4.3	Slot 5	11
2.4.4	Slot 6	12
2.4.5	Slot 7	13
2.5	FID Slots	14
2.5.1	Slot 0	14
2.5.2	Slot 1	15
2.5.3	Slot 2	16
A	Summary	17
A.1	Status	17
A.2	Comments	17

1 Front

seq_num	300176	Sequence number
obs_id	7286	Observation id
title	Monitoring the supersoft source state of many optical novae in the core of M 31	Proposal title
observer	Dr. Wolfgang Pietsch	Principal investigator
object	M31	Source name
ra_targ	10.684583	Observer's specified target RA [deg]
dec_targ	41.269278	Observer's specified target Dec [deg]
ra_nom	10.688454819027	Nominal RA [deg]
dec_nom	41.266126703147	Nominal Dec [deg]
roll_nom	333.62878267223	Nominal Roll [deg]
revision	5	Processing version of data
ontime	18887.932148635	[s]
livetime	18707.409677833	Ontime multiplied by DTCOR
l2events	1039823	Number of level 2 events

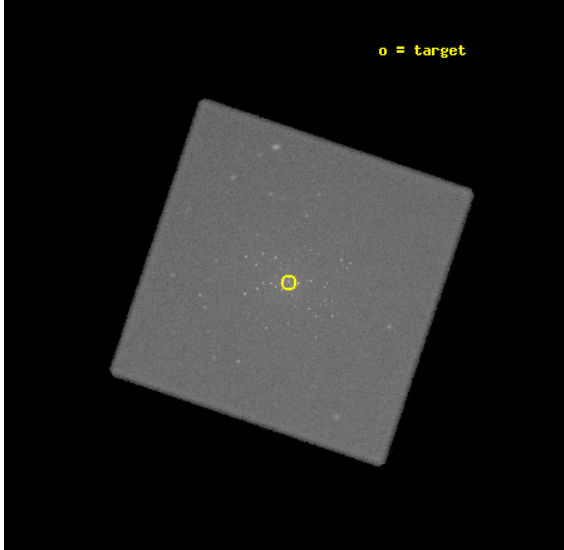


2 OBI

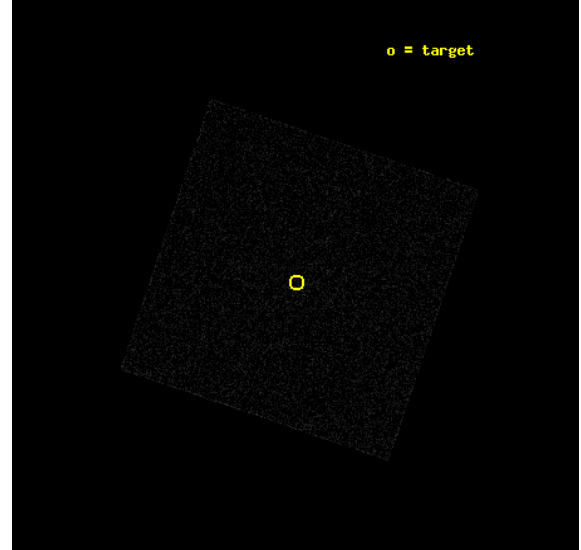
2.1 OBI

2.1.1 Images

Level 1 Image



Level 1 Bad Events



2.1.2 Parameters

obi_num	0	Obi number	sched_exp_time	18700.000000	[s] Scheduled observation exposure time
ascdsver	8.4.5	Processing system revision	ontime	18887.932148635	[s]
caldbver	4.5.1.1	 	l1events	1645644	Number of level 1 events
date	2012-08-11T20:19:45	Date and time of file creation			
revision	5	Processing version of data			

2.1.3 Events

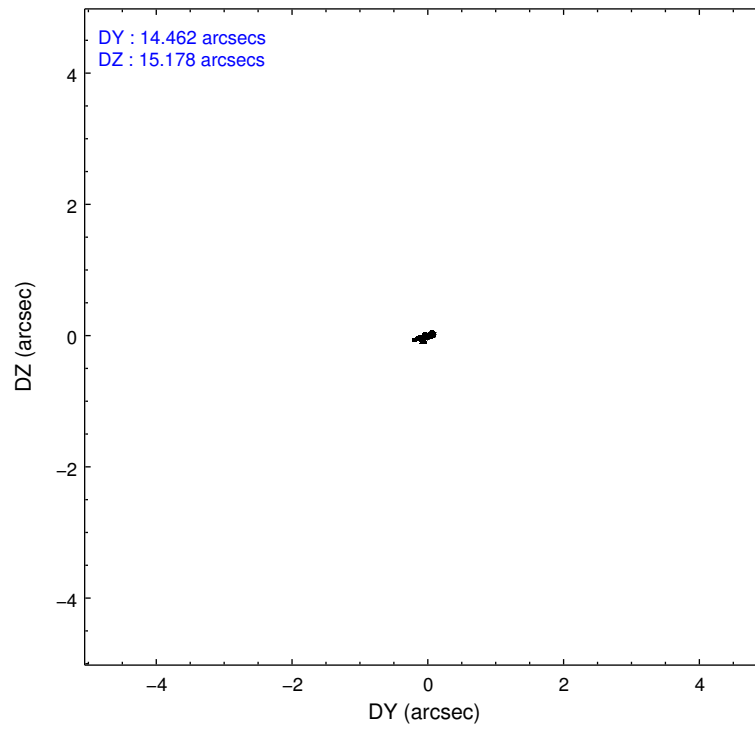
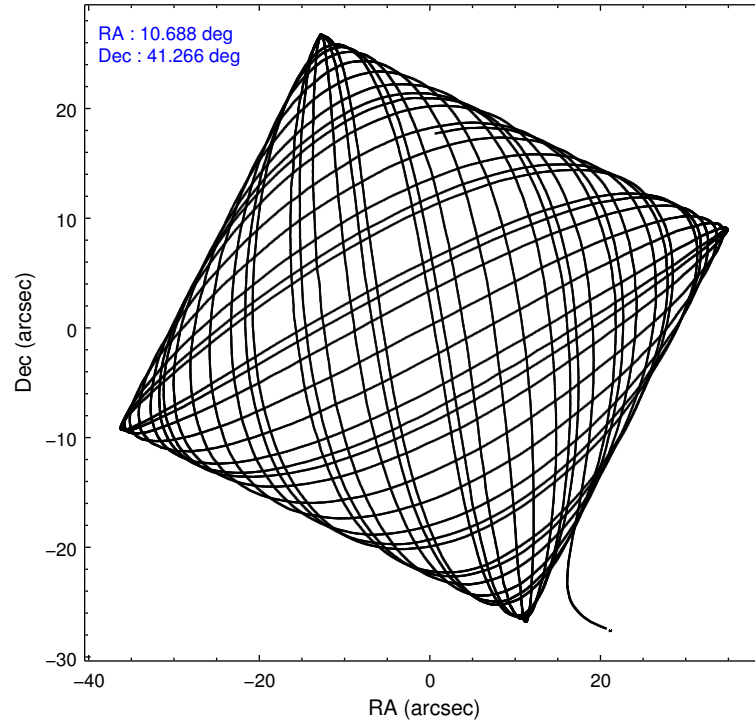
Level 1 Events

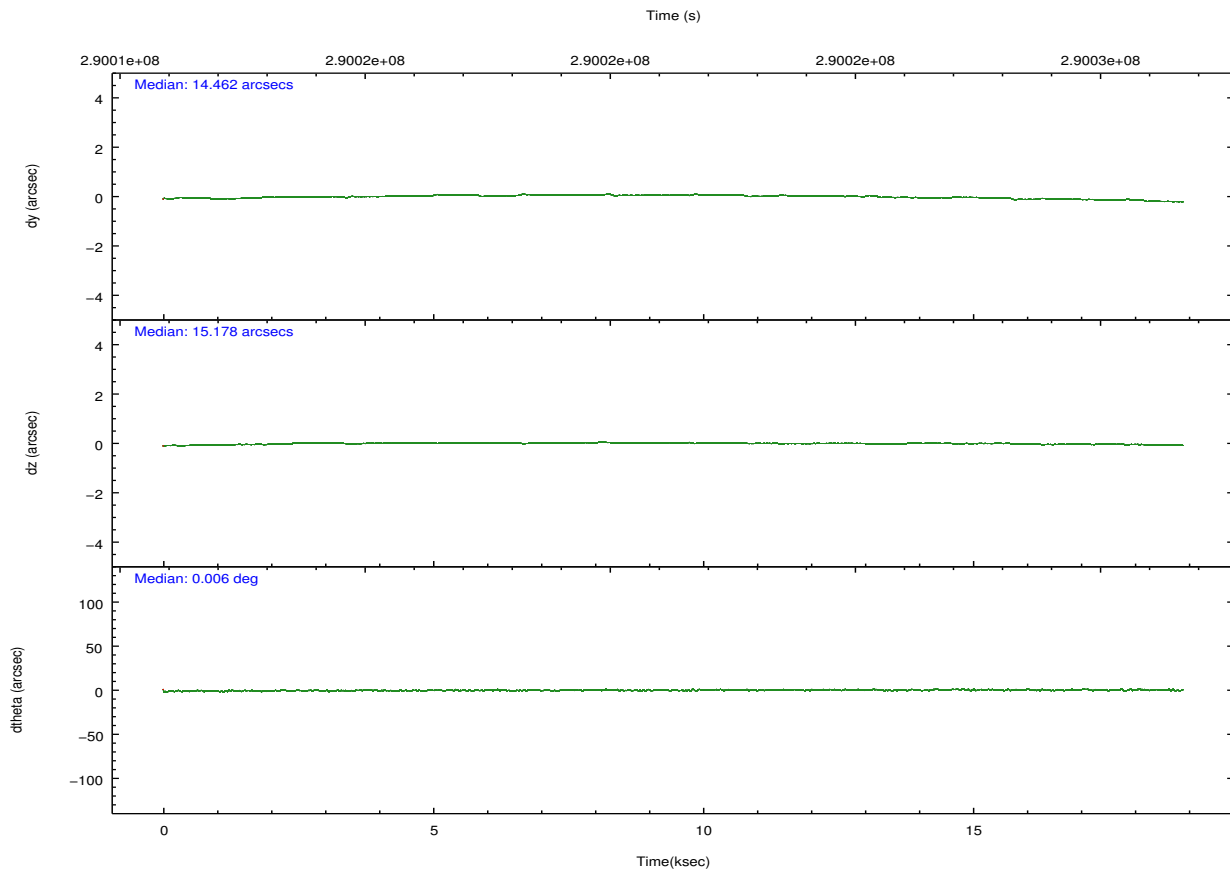
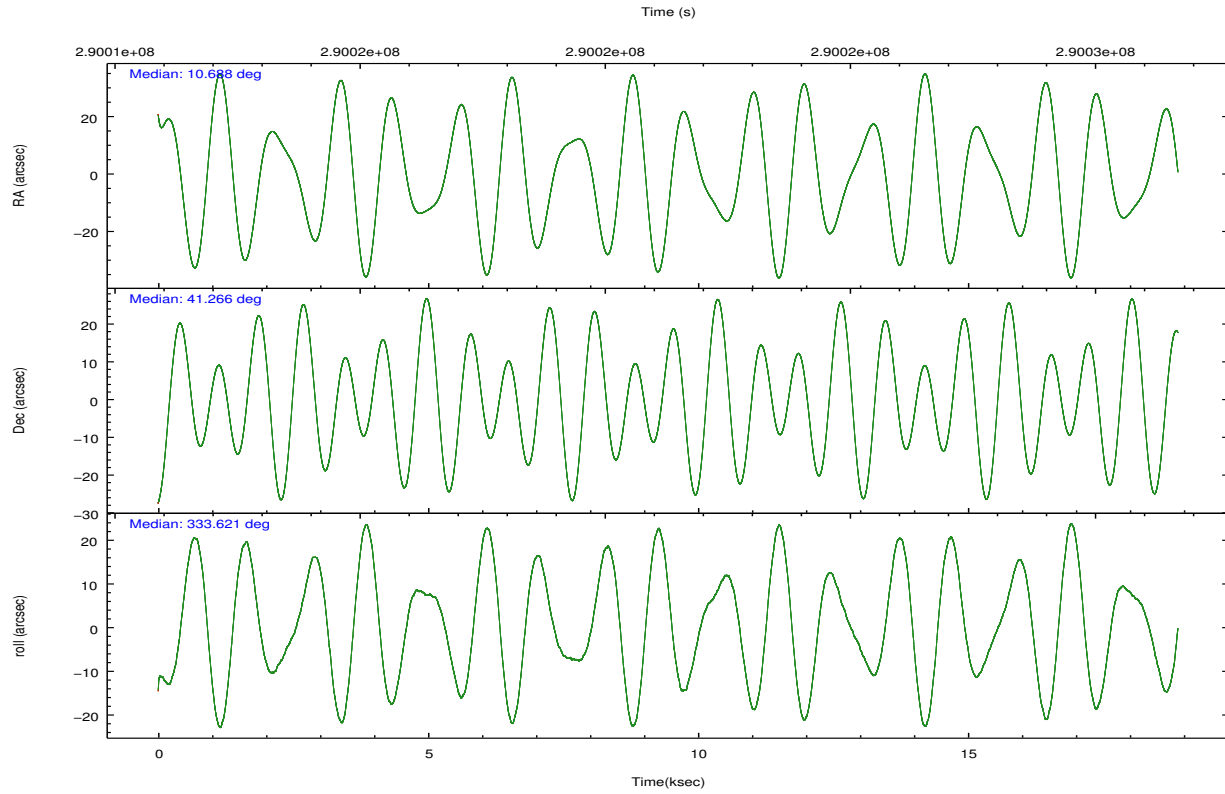
	segment 0
level 1 events	1645644
rejected events	117700
rejected %	7%

2.2 Compared Parameters

Parameter	Planned	Actual	Parameter	Planned	Actual
Instrument	HRC	HRC	Obspar format version number	7	7
Detector	HRC-I	HRC-I	Obspar file type	PREDICTED	ACTUAL
Grating	NONE	NONE	Obspar update status	NONE	UPDATED
Data mode	OBSERVING	OBSERVING			
Observation mode	POINTING	POINTING			
[deg] Pointing RA	10.652289	10.68845481902654			
[deg] Pointing Dec	41.263790	41.26612670314654			
[deg] Pointing Roll	333.748129	333.6287826722298			
[s] Window start time (MET)	289872065.184000	289872065.184000			
[s] Window stop time (MET)	290390405.184000	290390405.184000			
[mm] SIM focus pos	-1.040293	-1.038866356238299			
[mm] SIM defocus	0	0.001426264420575141			
[mm] SIM translation stage pos	126.985494	126.9829799899862			
[mm] SIM translation stage offset	0	0.002508901615314585			
[s] Observation start time (MET)	290012017.184000	290010973.85302			
Observation start date	2007-03-11T14:52:32	2007-03-11T14:36:13			
[s] Observation end time (MET)	290030717.184000	290031370.32899			
Observation end date	2007-03-11T20:04:12	2007-03-11T20:16:10			

2.3 Aspect



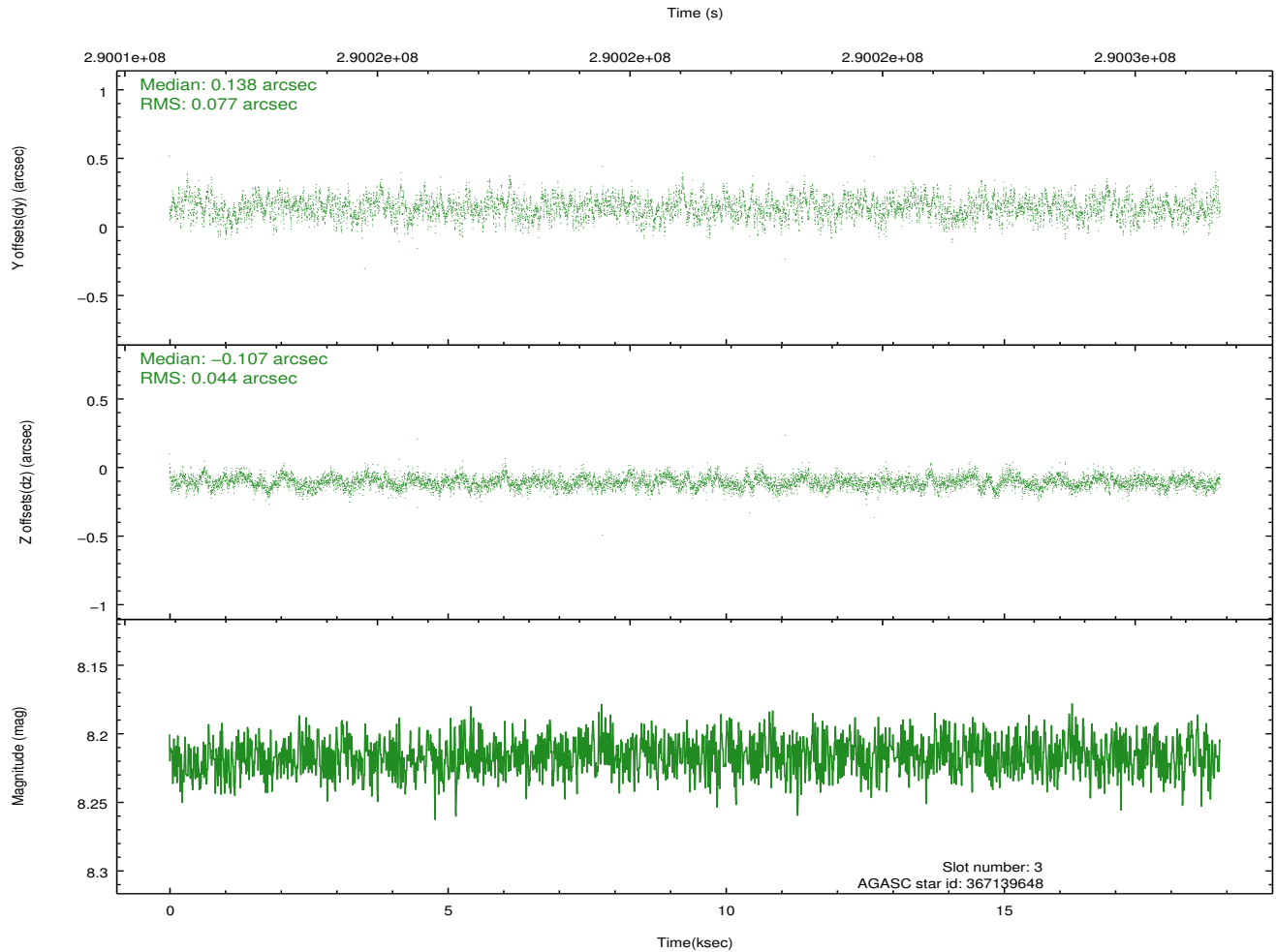
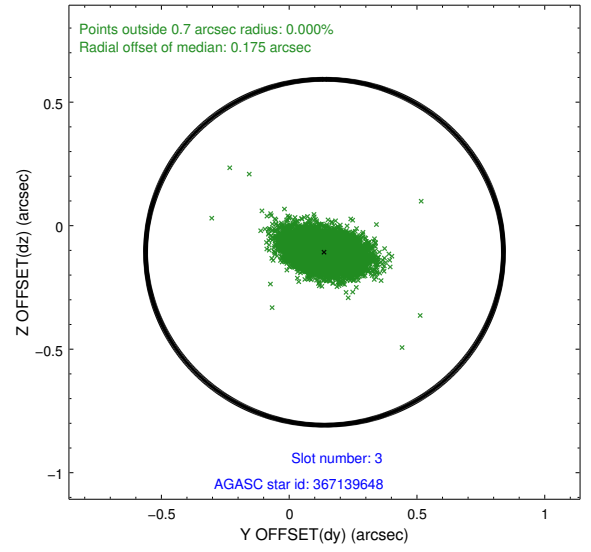
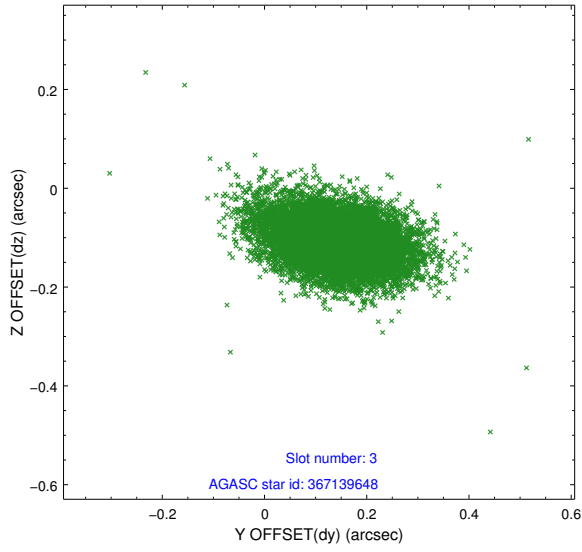


Slot Statistics

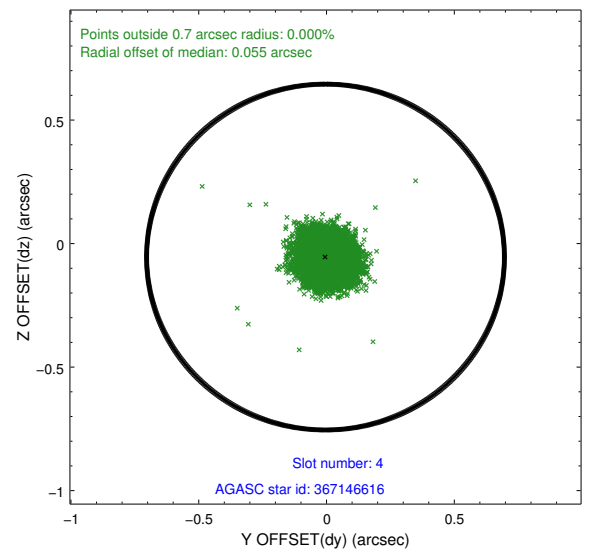
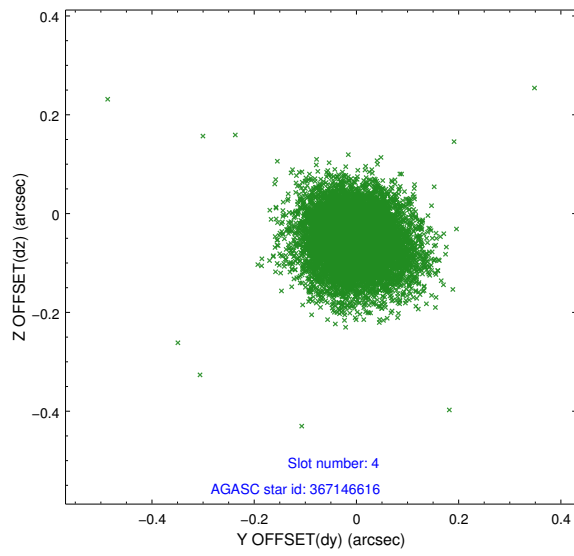
slot	status	id	mag	n_pts	med_dy	med_dz	dr1	dr2	ra	dec	mean_y	mean_z
0	FID	HRC-I-1	6.98	4608	-0.090	-0.004	0.007	0.011	0.000000	0.000000	-770.26	-1303.29
1	FID	HRC-I-2	7.03	4607	0.218	-0.091	0.006	0.011	0.000000	0.000000	842.51	-1305.16
2	FID	HRC-I-3	7.08	4608	-0.009	0.006	0.006	0.011	0.000000	0.000000	-1198.59	1000.98
3	GUIDE	367139648	8.22	9206	0.138	-0.107	0.091	0.159	11.021290	40.433909	2228.22	-2230.16
4	GUIDE	367146616	8.86	9147	-0.004	-0.055	0.079	0.130	11.418645	41.190163	1975.23	688.68
5	GUIDE	367148872	7.22	9214	-0.031	-0.002	0.077	0.126	10.505940	40.688258	558.65	-2034.92
6	GUIDE	367663272	9.27	9207	0.003	0.120	0.108	0.181	10.656279	41.699429	-684.57	1410.58
7	GUIDE	367674552	8.84	9210	-0.107	0.043	0.089	0.139	11.016238	41.570845	389.04	1427.03

2.4 Star Slots

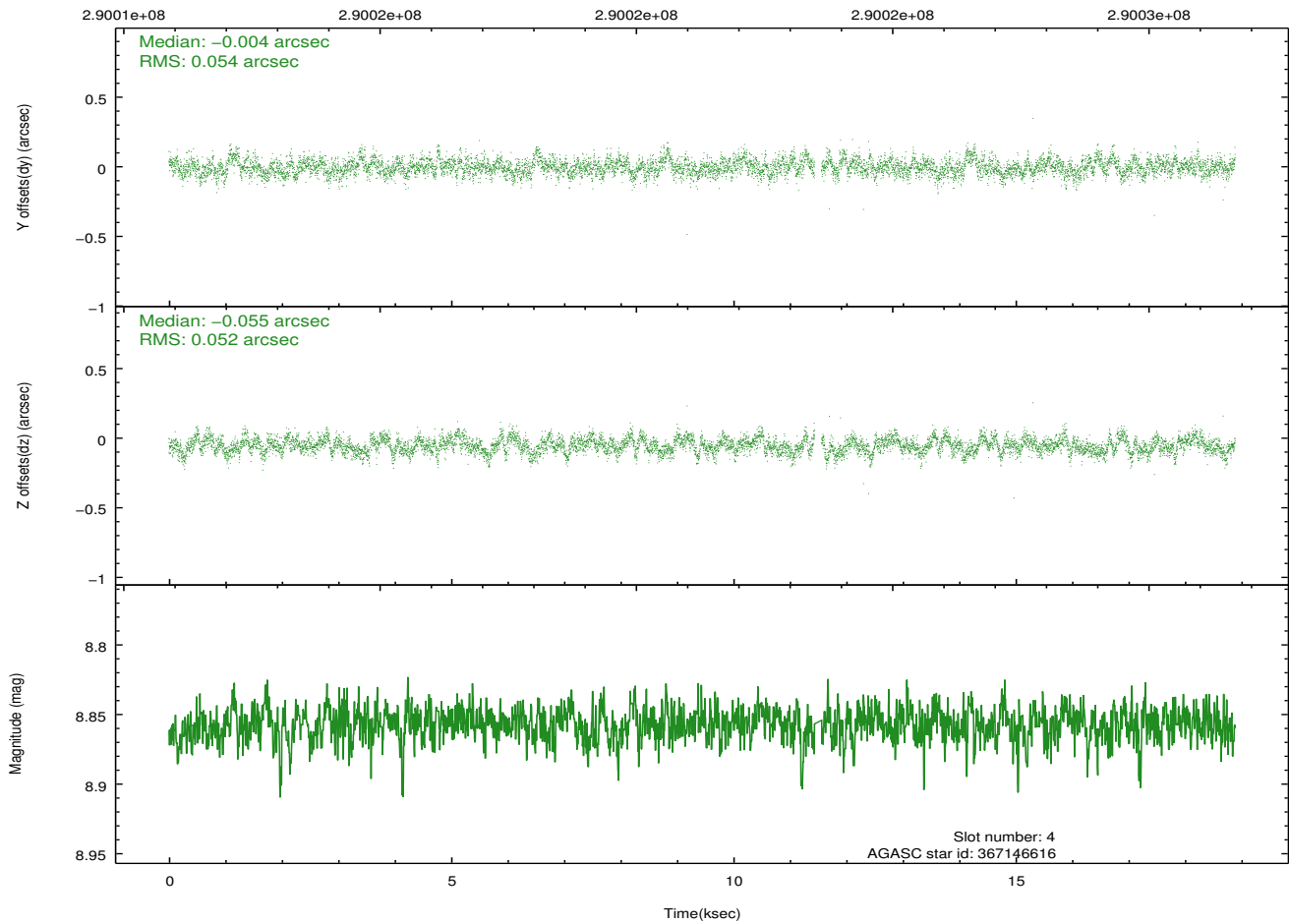
2.4.1 Slot 3



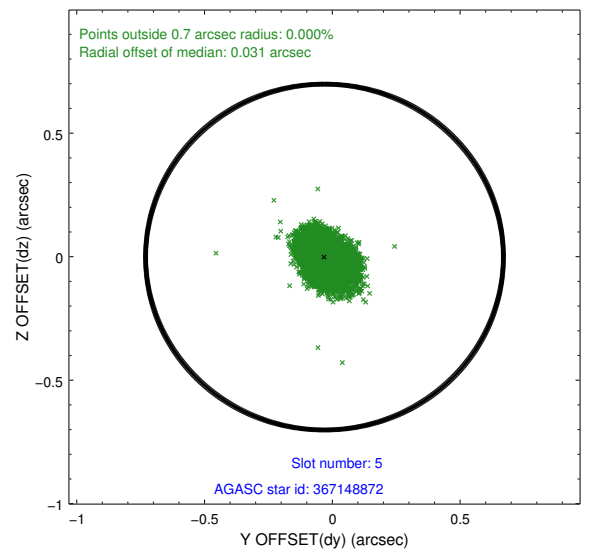
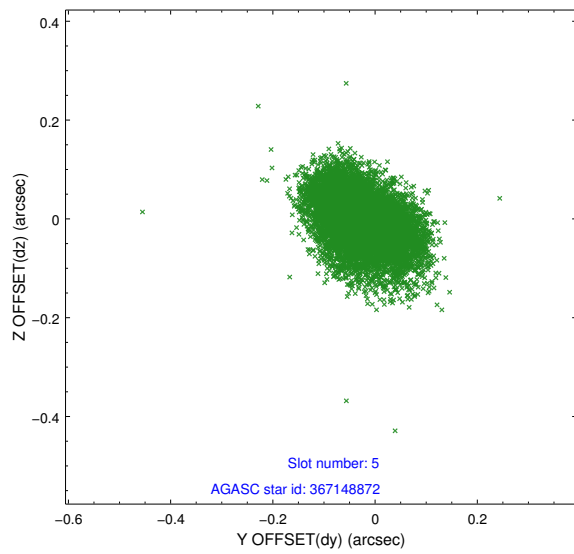
2.4.2 Slot 4



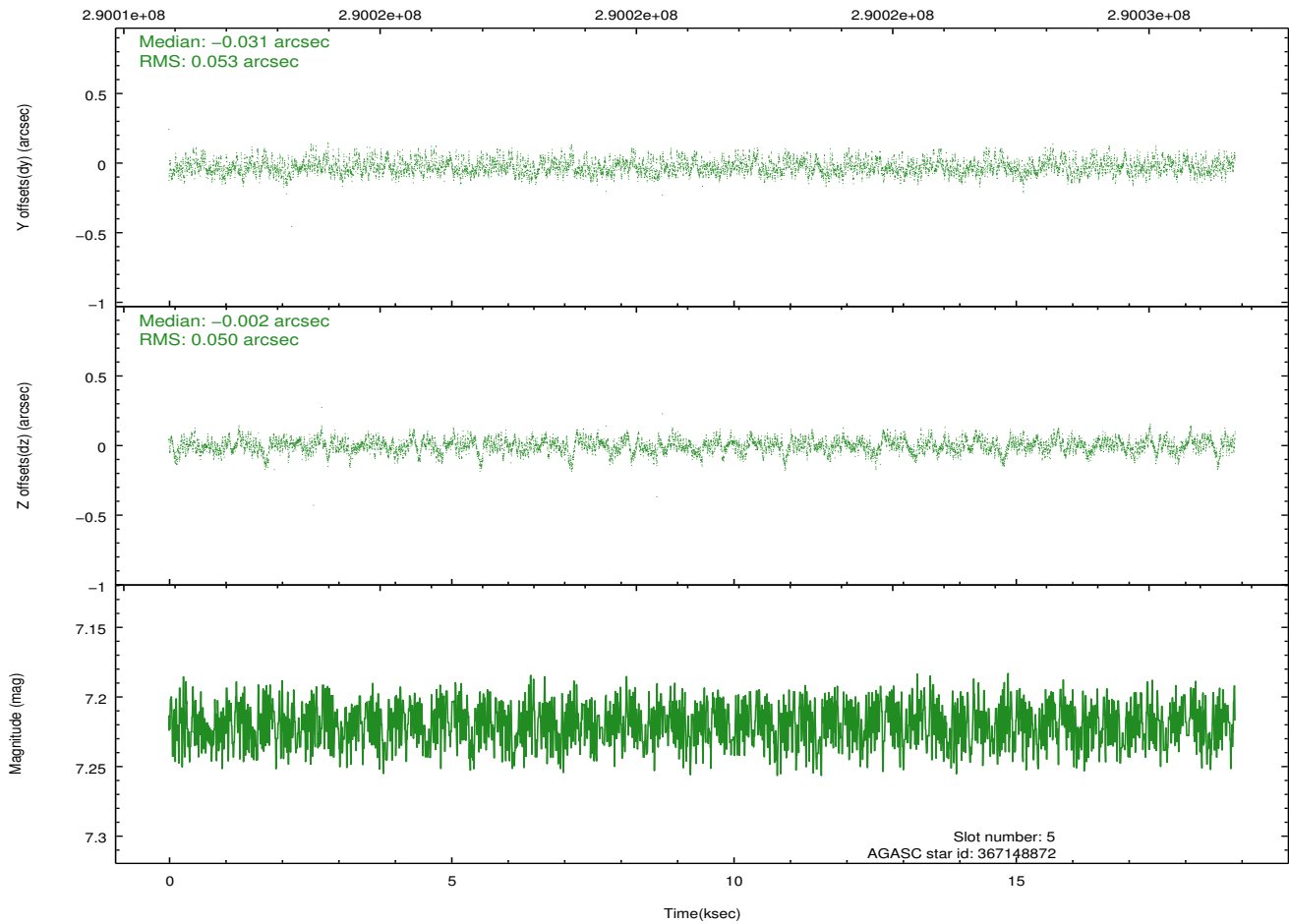
Time (s)



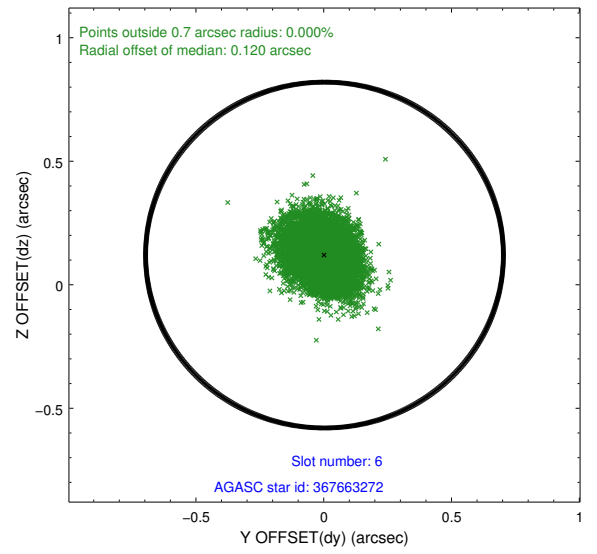
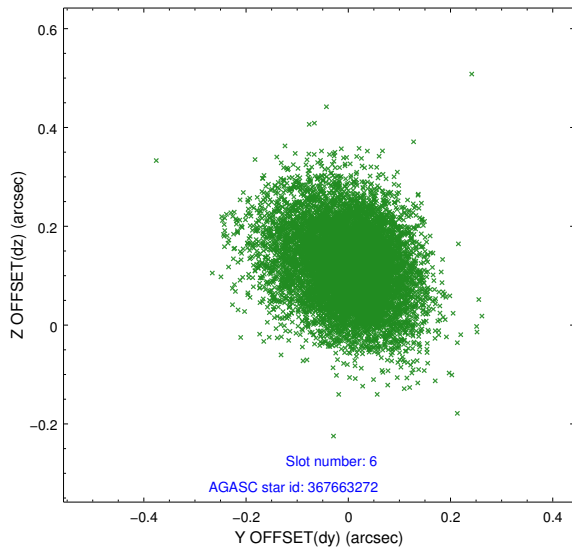
2.4.3 Slot 5



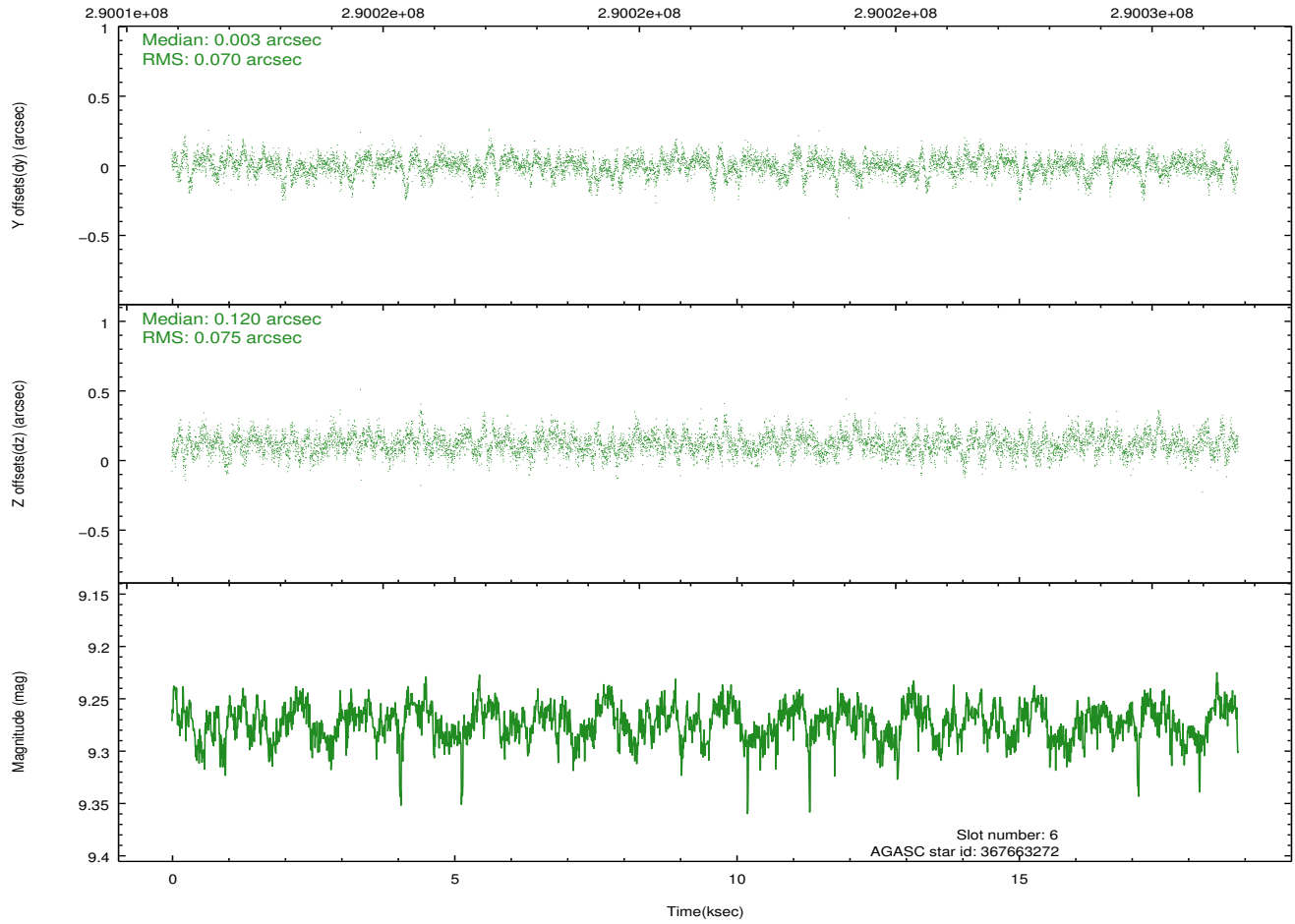
Time (s)



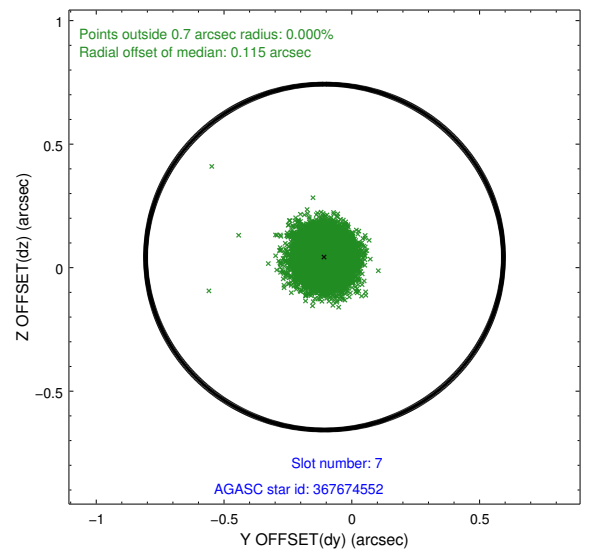
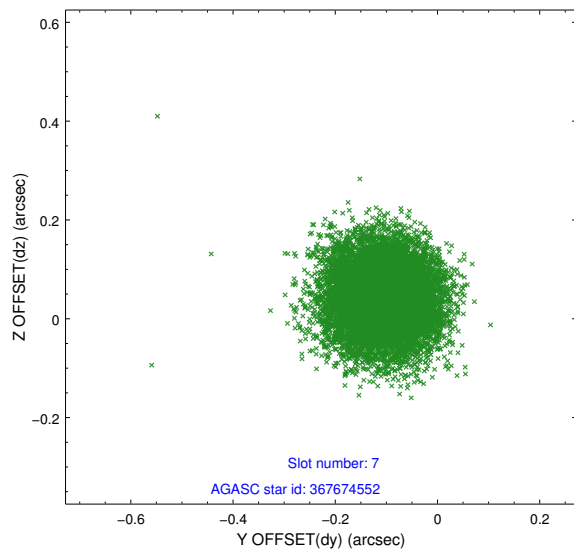
2.4.4 Slot 6



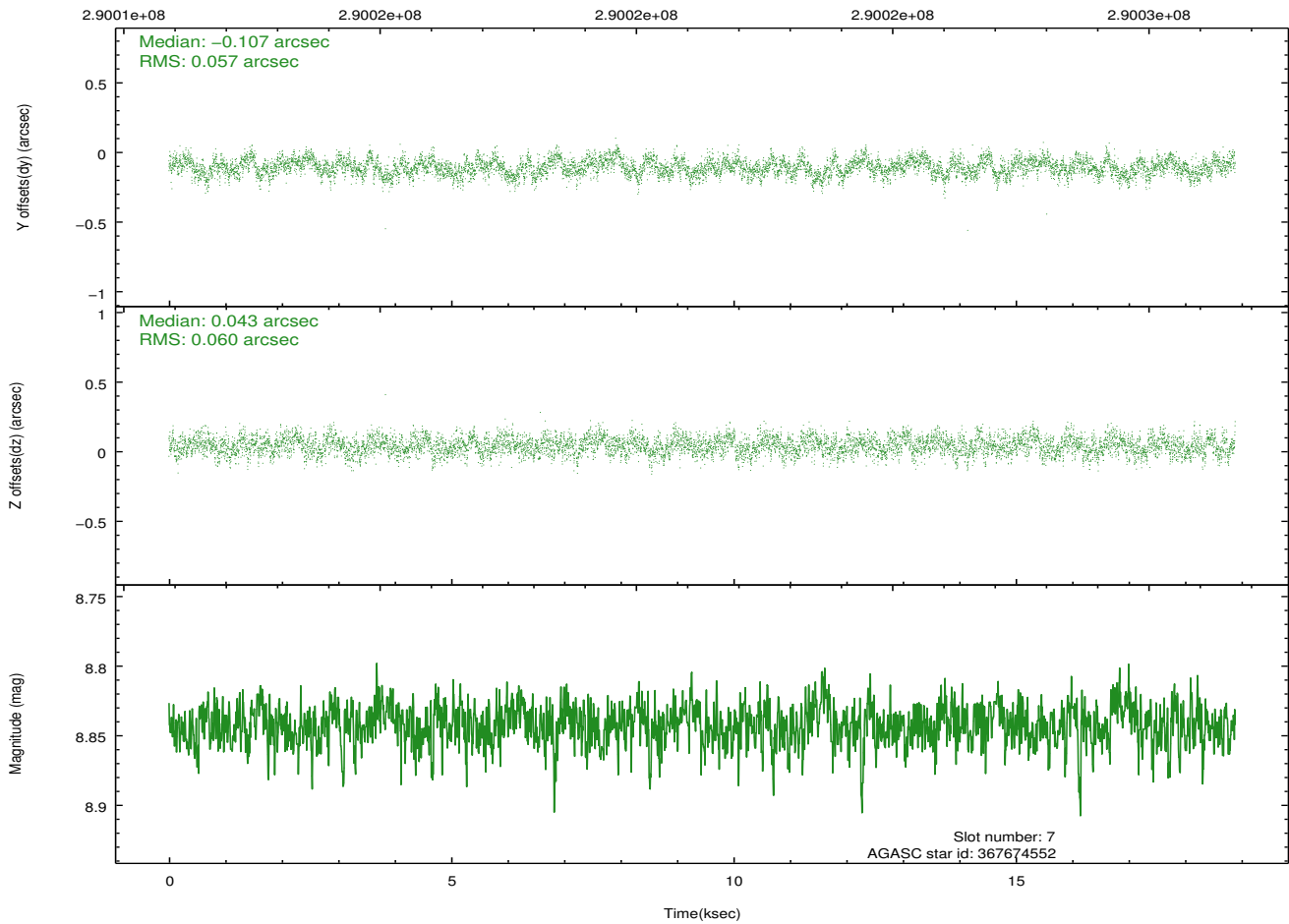
Time (s)



2.4.5 Slot 7

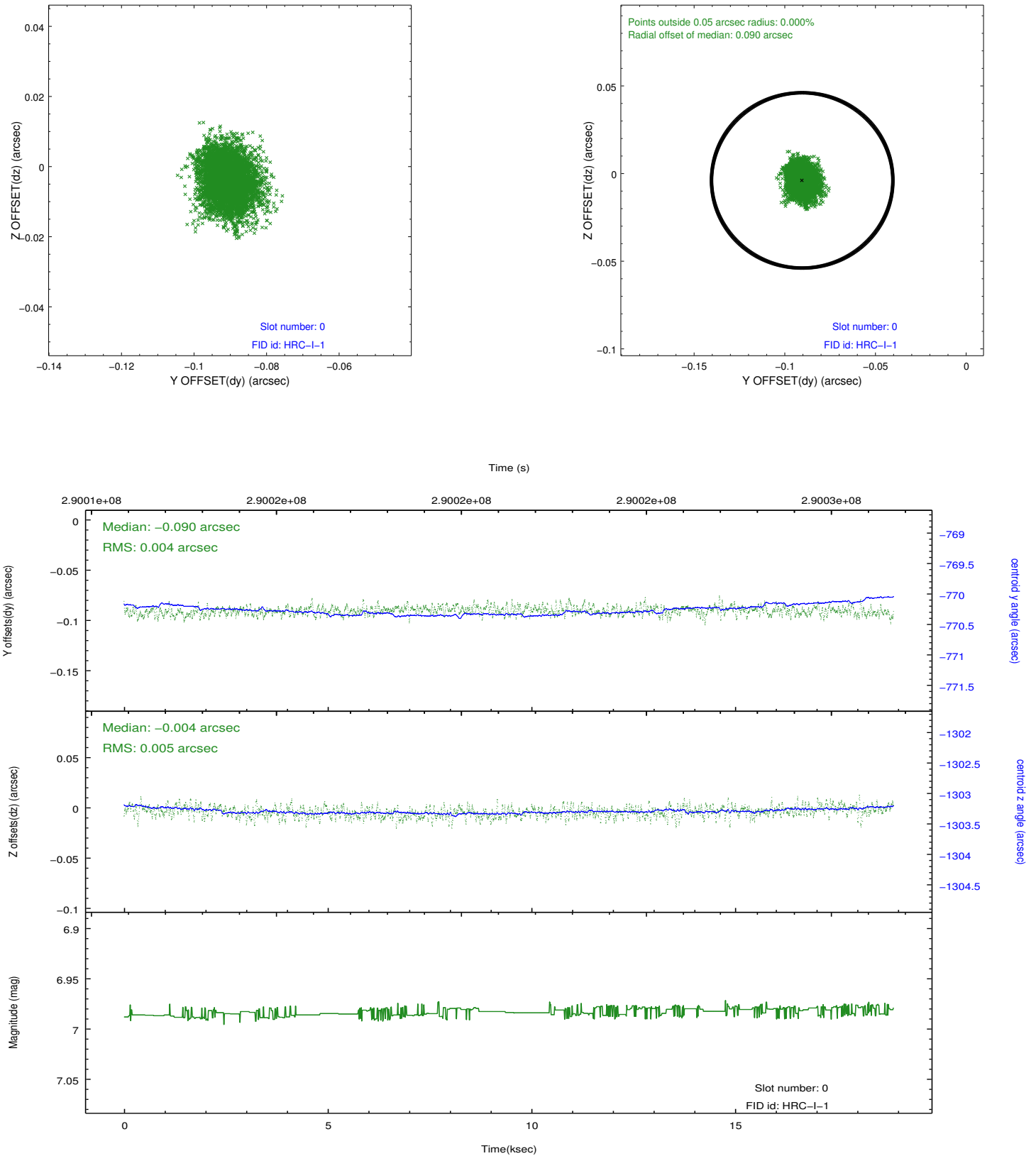


Time (s)

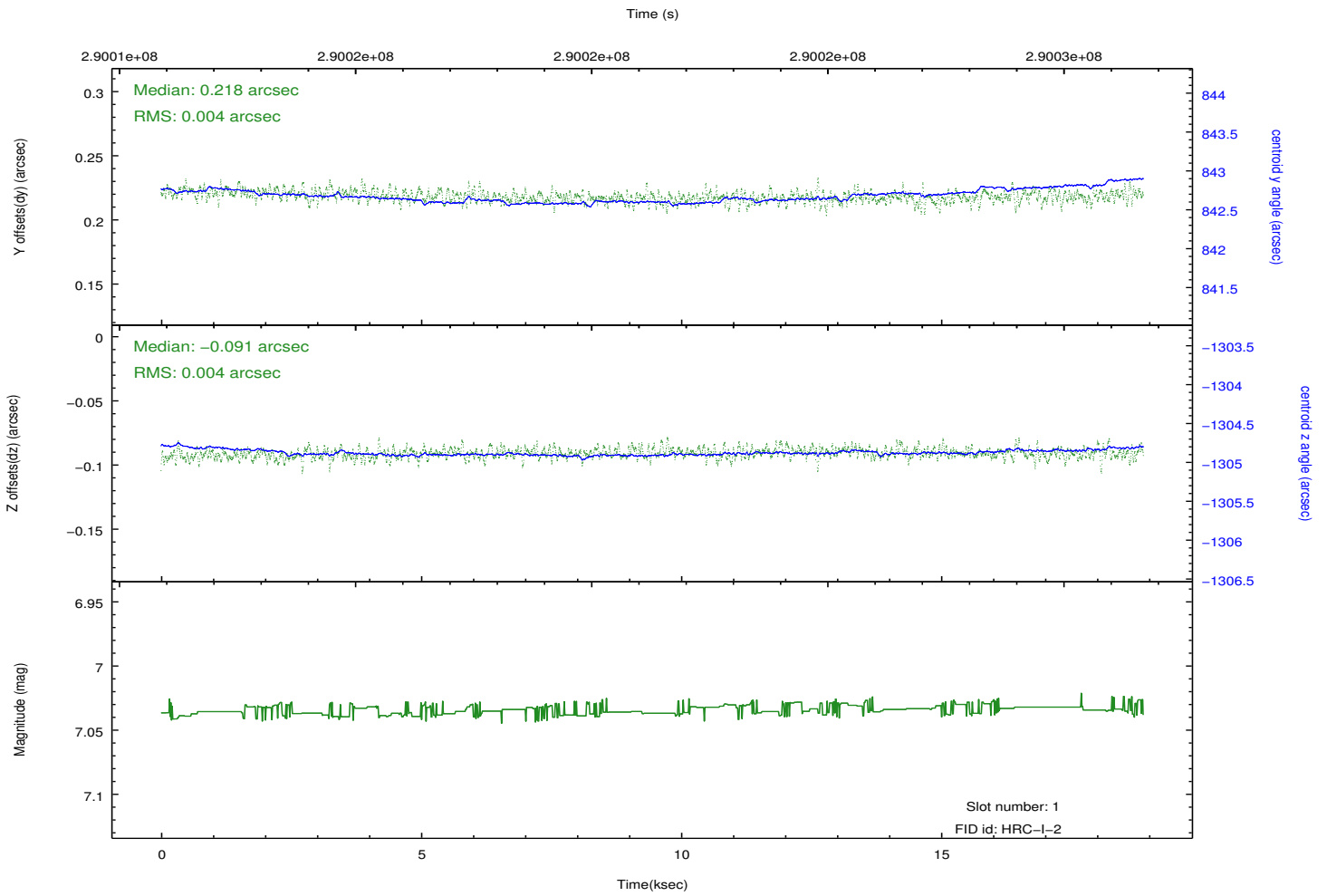
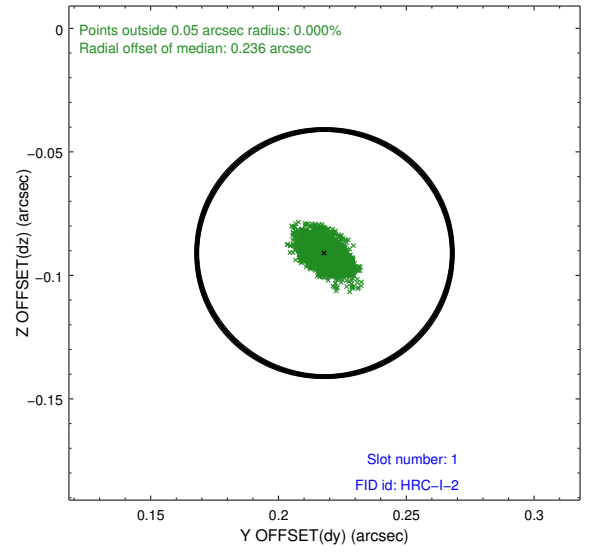
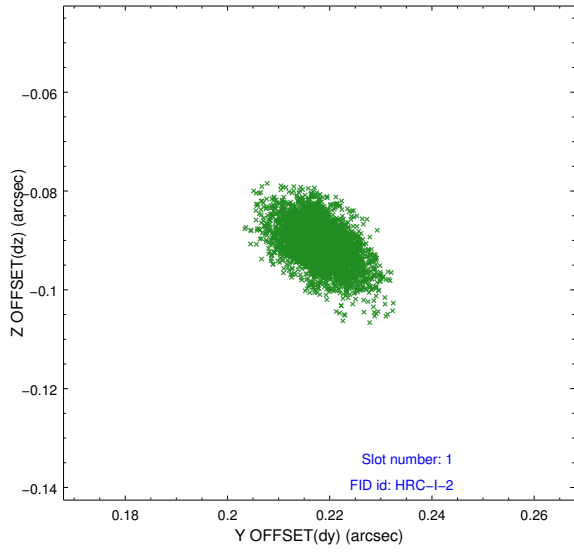


2.5 FID Slots

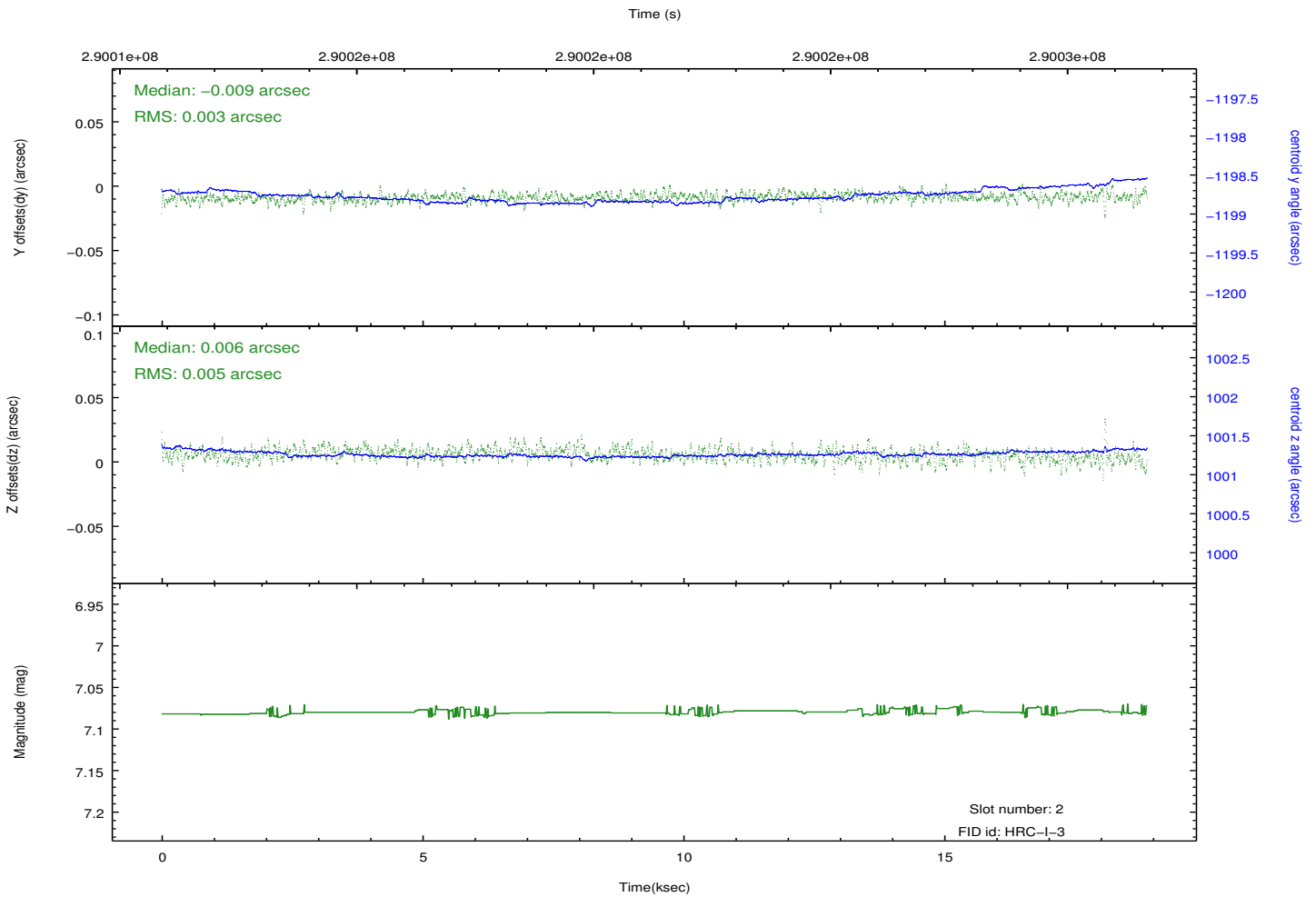
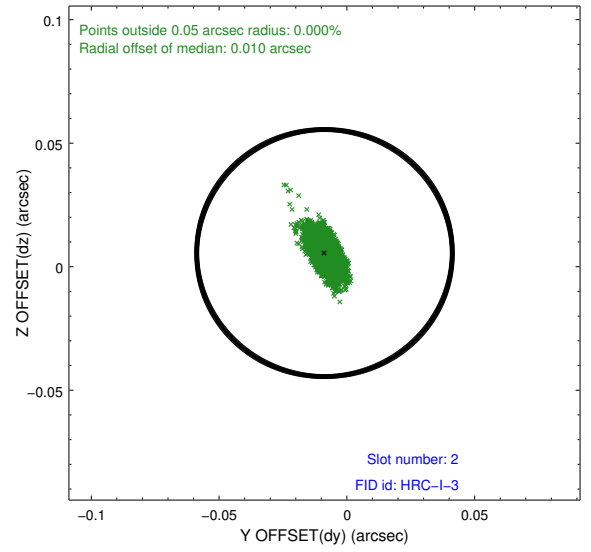
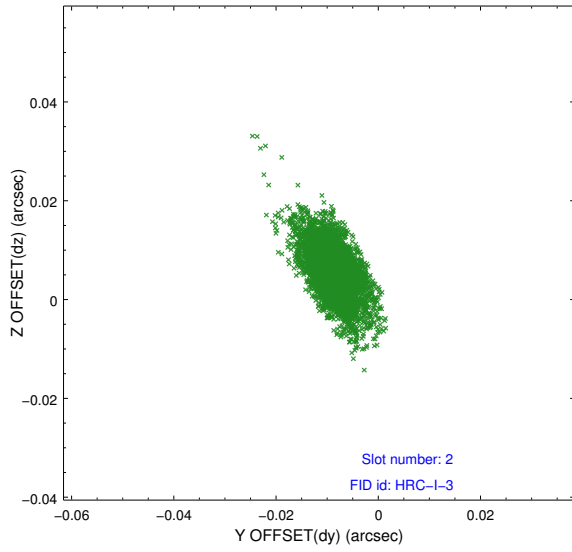
2.5.1 Slot 0



2.5.2 Slot 1



2.5.3 Slot 2



A Summary

A.1 Status

V&V Scientist	Jen Lauer
V&V Date (YYYY-MM-DD)	2012.08.15
V&V Edition	1
V&V Disposition and Status	OK
V&V Charge Time	18.8879321

A.2 Comments

Joint proposal with XMM. Window preference met.