

V&V Reference Report

L2 ASCDS Version : 8.4.4

Observation 7426 - L2 Version 3
Chandra X-Ray Center

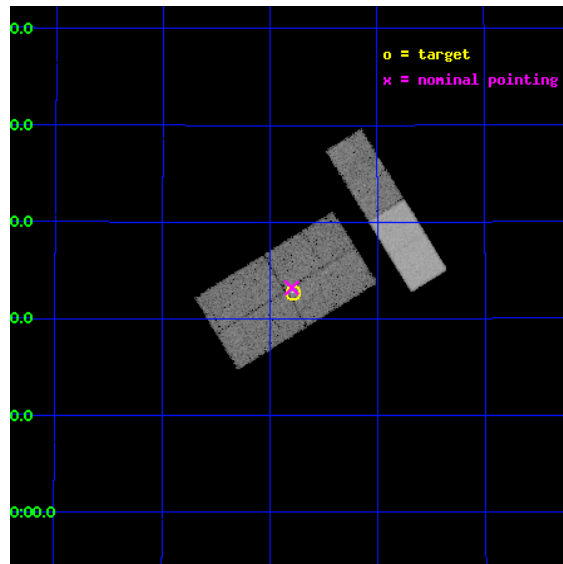
L2 Processing Date : Apr 21 2012

Contents

1	Front	2
2	OBI	3
2.1	OBI	3
2.1.1	Images	3
2.1.2	Bias	3
2.1.3	Parameters	4
2.1.4	Events	4
2.2	Compared Parameters	5
2.3	Aspect	6
2.4	Star Slots	9
2.4.1	Slot 3	9
2.4.2	Slot 4	10
2.4.3	Slot 5	11
2.4.4	Slot 6	12
2.4.5	Slot 7	13
2.5	FID Slots	14
2.5.1	Slot 0	14
2.5.2	Slot 1	15
2.5.3	Slot 2	16
A	Summary	17
A.1	Status	17
A.2	Comments	17

1 Front

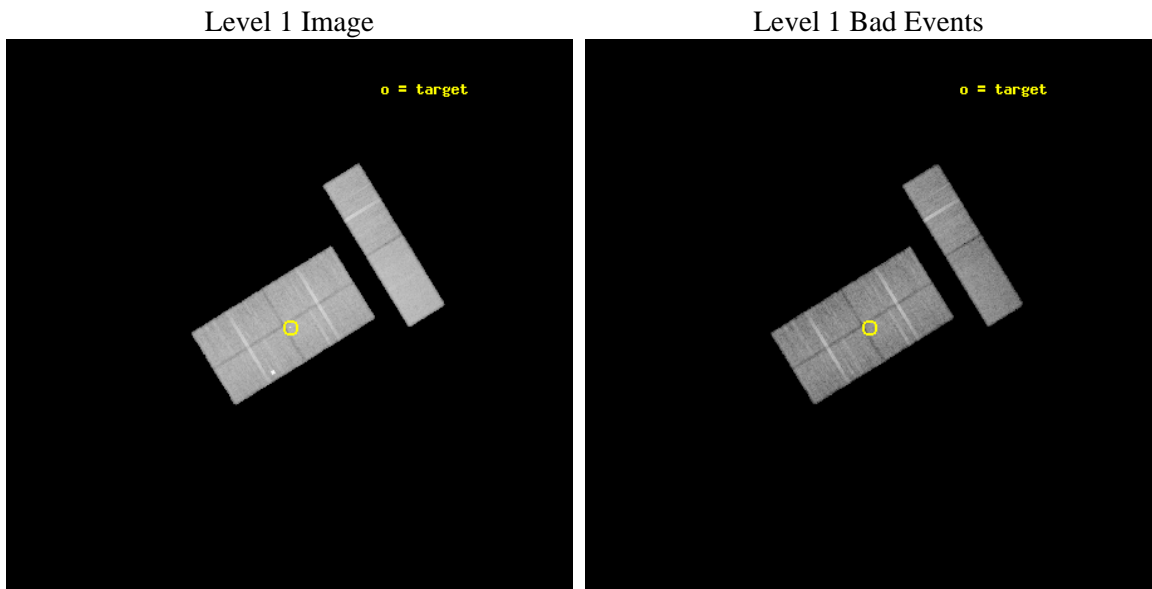
seq_num	200439	Sequence number
obs_id	7426	Observation id
title	The shock physics at the colliding winds in WR 146	Proposal title
observer	Dr Julian Pittard	Principal investigator
object	WR146	Source name
dtcycle	0	
cycle	P	events from which exps? Prim/Second/Both
ra_targ	308.94625	Observer's specified target RA [deg]
dec_targ	41.379083	Observer's specified target Dec [deg]
ra_nom	308.94890531344	Nominal RA [deg]
dec_nom	41.386939236076	Nominal Dec [deg]
roll_nom	58.388427151777	Nominal Roll [deg]
revision	3	Processing version of data
ontime	20142.000133336	Sum of GTIs [s]
livetime	19692.99973928	Livetime [s]
ontime0	20140.159133136	Sum of GTIs [s]
ontime1	20142.000133336	Sum of GTIs [s]
ontime2	20142.000133336	Sum of GTIs [s]
ontime3	20142.000133336	Sum of GTIs [s]
ontime6	20142.000133336	Sum of GTIs [s]
ontime7	20142.000133336	Sum of GTIs [s]
l2events	108815	Number of level 2 events



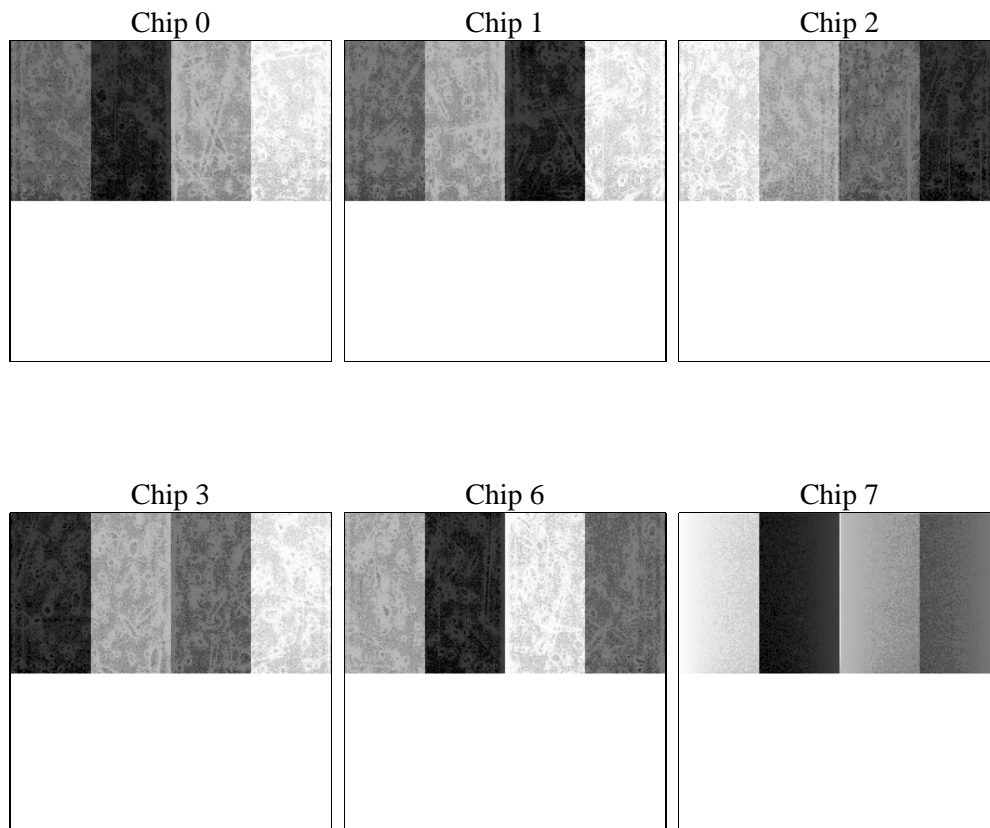
2 OBI

2.1 OBI

2.1.1 Images



2.1.2 Bias



2.1.3 Parameters

obi_num	0	Obi number	sched_exp_time	20000.000000	[s] Scheduled observation exposure time
ascdsver	8.4.4	Processing system revision	ontime	20142.000133336	Sum of GTIs [s]
caldbver	4.4.9	 	ontime0	20140.159133136	Sum of GTIs [s]
date	2012-04-21T14:30:37	Date and time of file creation	ontime1	20142.000133336	Sum of GTIs [s]
revision	3	Processing version of data	ontime2	20142.000133336	Sum of GTIs [s]
			ontime3	20142.000133336	Sum of GTIs [s]
			ontime6	20142.000133336	Sum of GTIs [s]
			ontime7	20142.000133336	Sum of GTIs [s]
			l1events	699024	Number of level 1 events

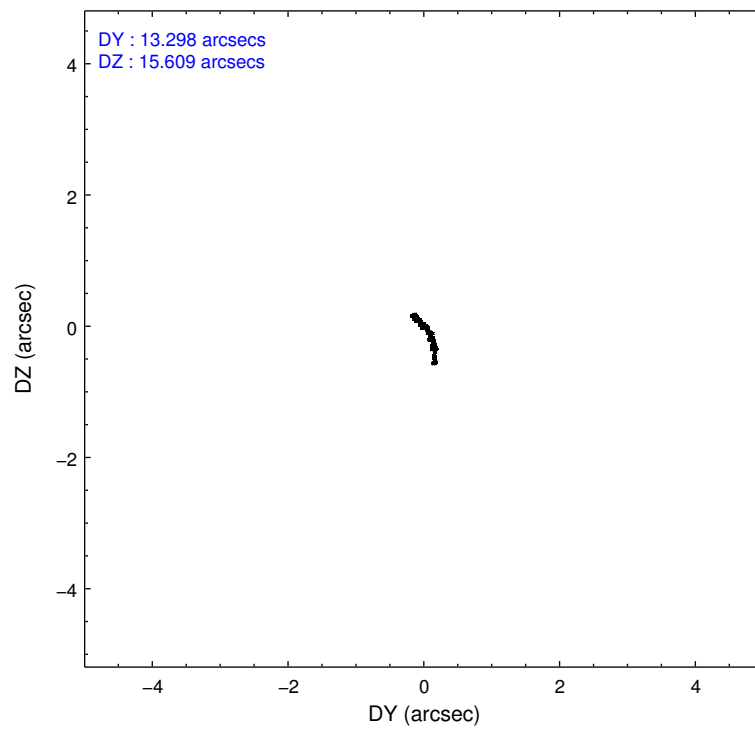
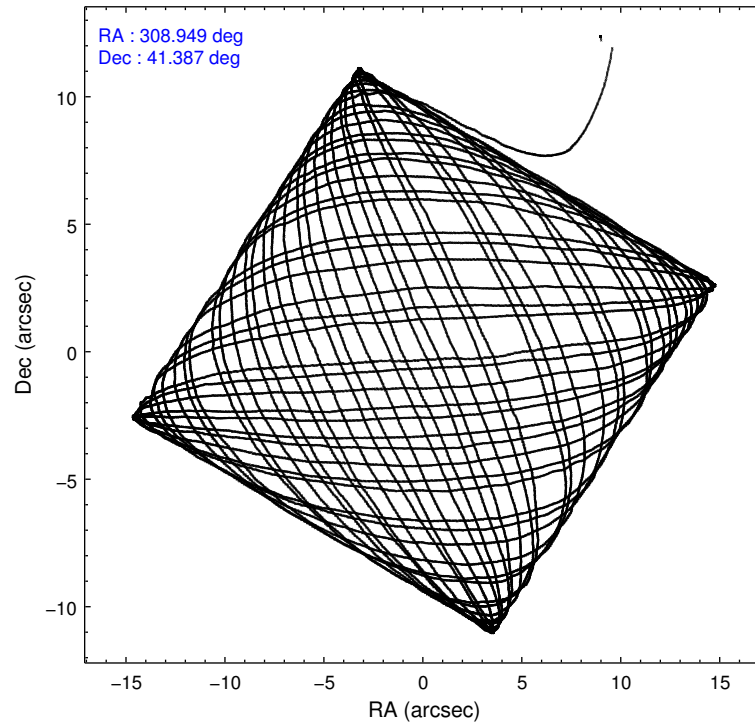
2.1.4 Events

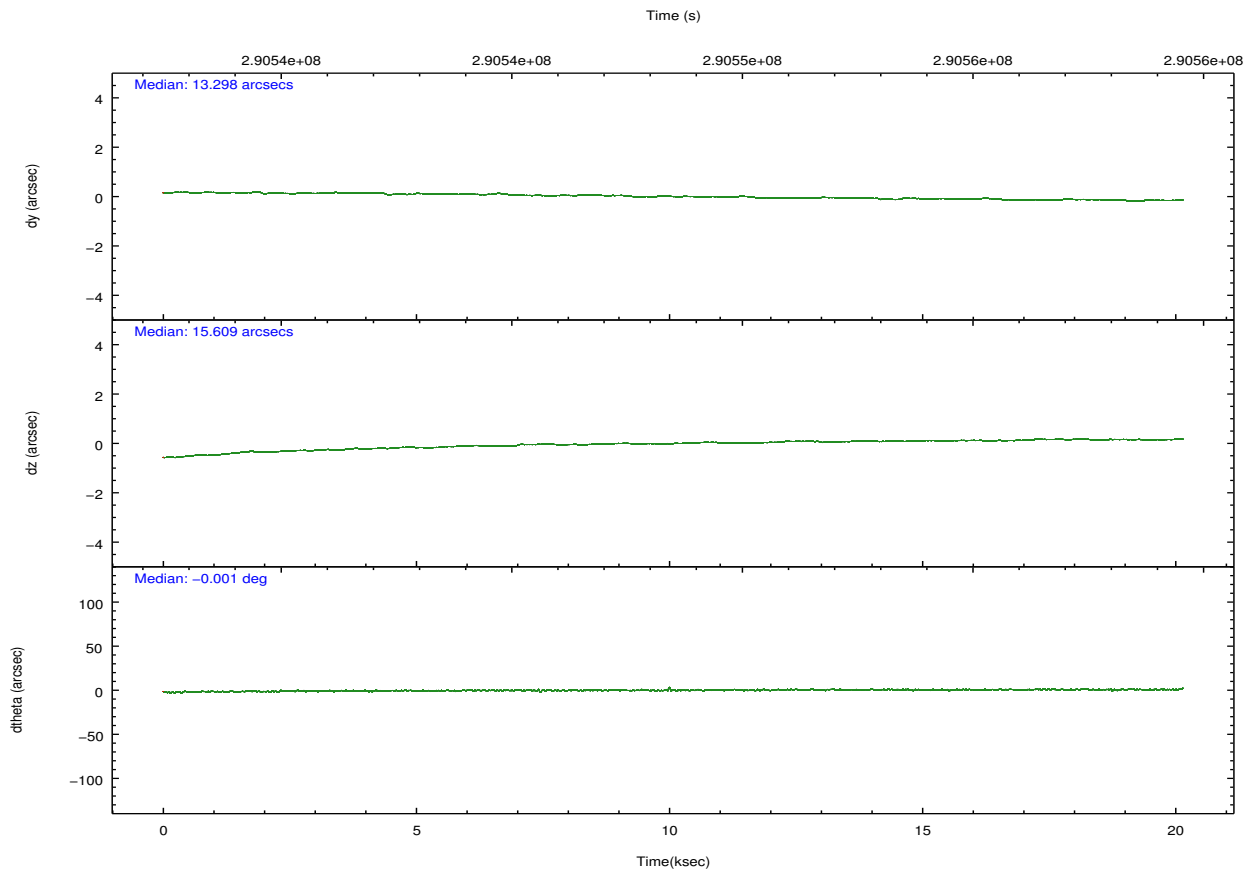
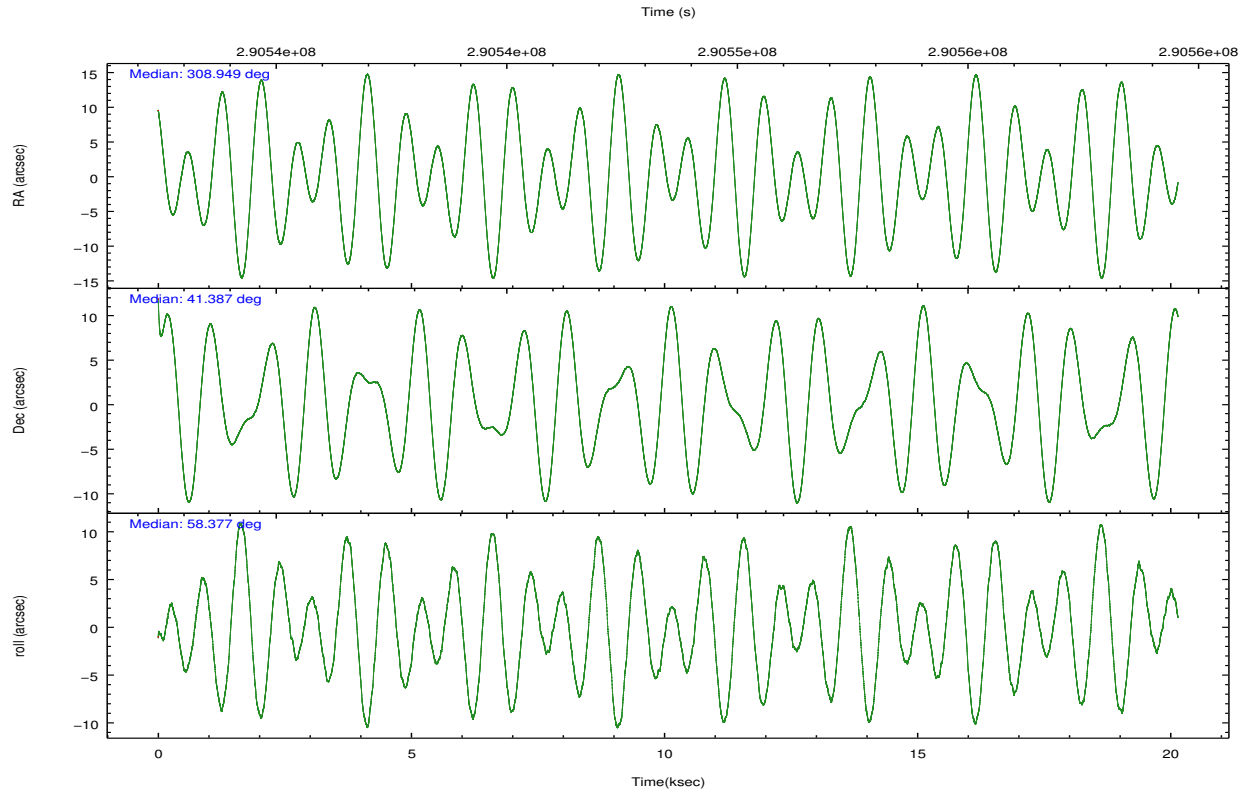
	ccd 0	ccd 1	ccd 2	ccd 3	ccd 6	ccd 7		ccd 0	ccd 1	ccd 2	ccd 3	ccd 6	ccd 7
level 1 events	102655	109770	110982	110888	119961	144768	grade 0 events	5551	10094	5799	6280	5276	5748
rejected events	90261	92671	98493	97923	106872	88272		5%	9%	5%	5%	4%	3%
rejected %	87%	84%	88%	88%	89%	60%	grade 1 events	105	63	80	80	62	198
								0%	0%	0%	0%	0%	0%
							grade 2 events	2739	2910	2556	2405	2894	12255
								2%	2%	2%	2%	2%	8%
							grade 3 events	1437	1456	1445	1493	1495	5713
								1%	1%	1%	1%	1%	3%
							grade 4 events	1344	1375	1465	1438	1468	5594
								1%	1%	1%	1%	1%	3%
							grade 5 events	4395	4623	4278	4926	5326	13924
								4%	4%	3%	4%	4%	9%
							grade 6 events	2192	2402	2088	2211	2799	30894
								2%	2%	1%	1%	2%	21%
							grade 7 events	84892	86847	93271	92055	100641	70442
								82%	79%	84%	83%	83%	48%

2.2 Compared Parameters

Parameter	Planned	Actual	Parameter	Planned	Actual
Instrument	ACIS	ACIS	Obspar format version number	7	7
Detector	ACIS-012367	ACIS-012367	Obspar file type	PREDICTED	ACTUAL
Grating	NONE	NONE	Obspar update status	NONE	UPDATED
Data mode	FAINT	FAINT	CCD I0 on	Y	Y
Observation mode	POINTING	POINTING	CCD I1 on	Y	Y
[deg] Pointing RA	308.948024	308.9489053134404	CCD I2 on	Y	Y
[deg] Pointing Dec	41.359427	41.3869392360763	CCD I3 on	Y	Y
[deg] Pointing Roll	58.180323	58.38842715177669	CCD S0 on	N	N
[mm] SIM focus pos	-0.782348	-0.7809083437167272	CCD S1 on	N	N
[mm] SIM defocus	0	0.001439871863259334	CCD S2 on	O1	Y
[mm] SIM translation stage pos	-233.592463	-233.5874344608287	CCD S3 on	O2	Y
[mm] SIM translation stage offset	0	-0.005018542100998502	CCD S4 on	N	N
[s] Observation start time (MET)	290538573.184000	290537062.30306	CCD S5 on	N	N
Observation start date	2007-03-17T17:08:28	2007-03-17T16:44:22	Number of optional ACIS chips dropped	0	0
[s] Observation end time (MET)	290558573.184000	290559581.04163	On-chip summing requested	N	N
Observation end date	2007-03-17T22:41:48	2007-03-17T22:59:41	Subarray requested	CUSTOM	1/2
Read mode	TIMED	TIMED	Subarray start row	513	513
			Subarray row count	512	512
			Alternating exposures requested	N	N
			[s] Primary exposure time	0.000000	1.8

2.3 Aspect



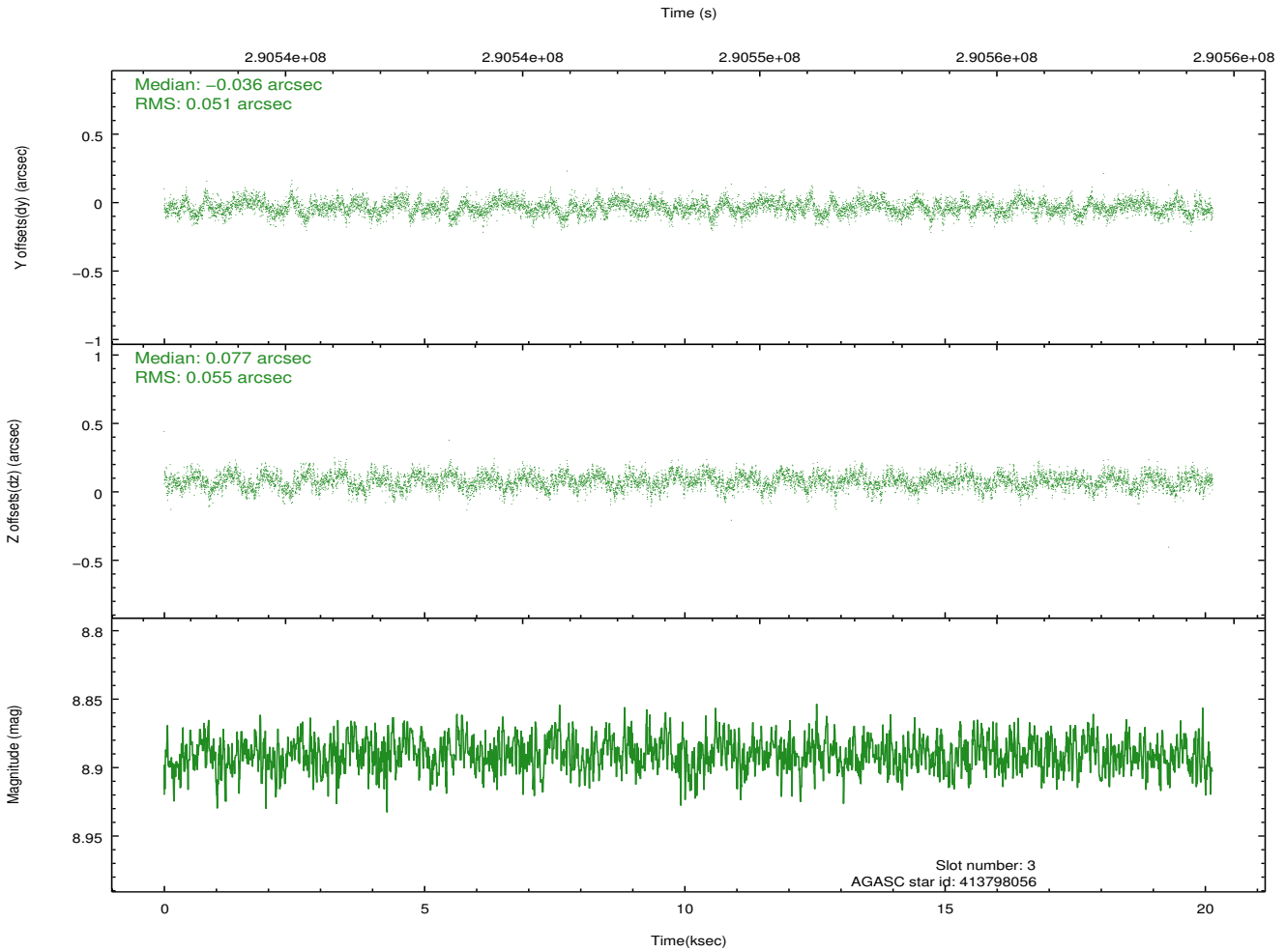
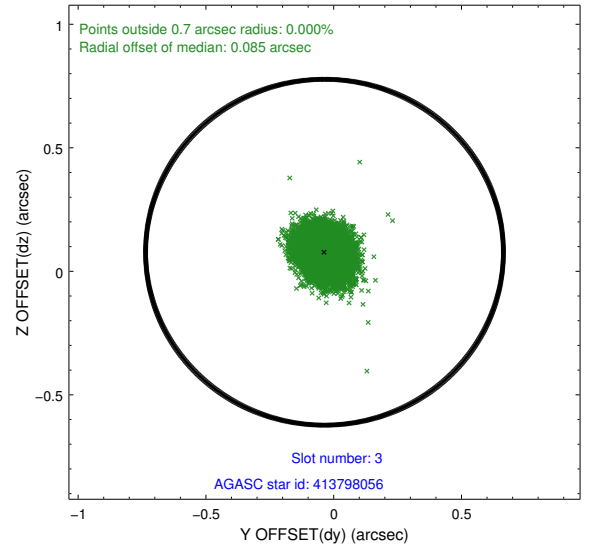
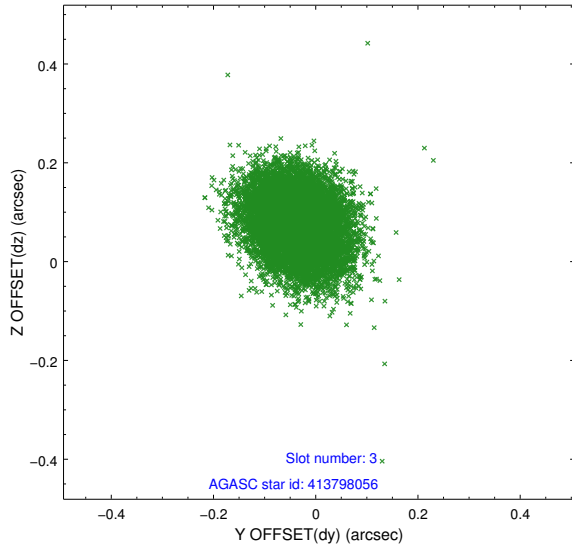


Slot Statistics

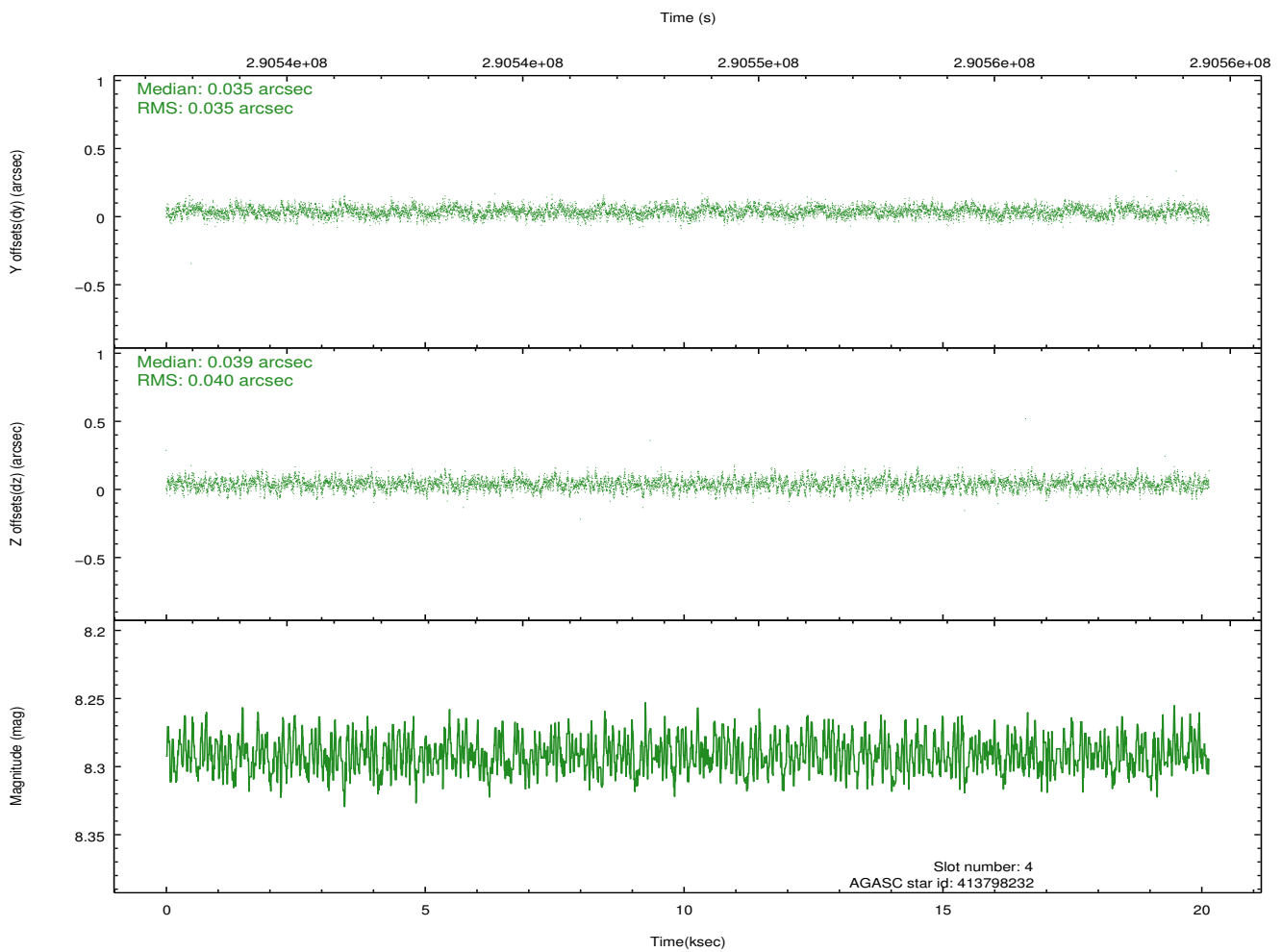
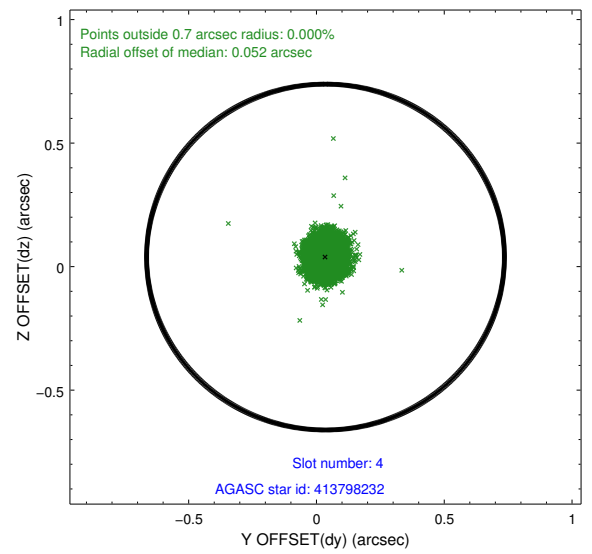
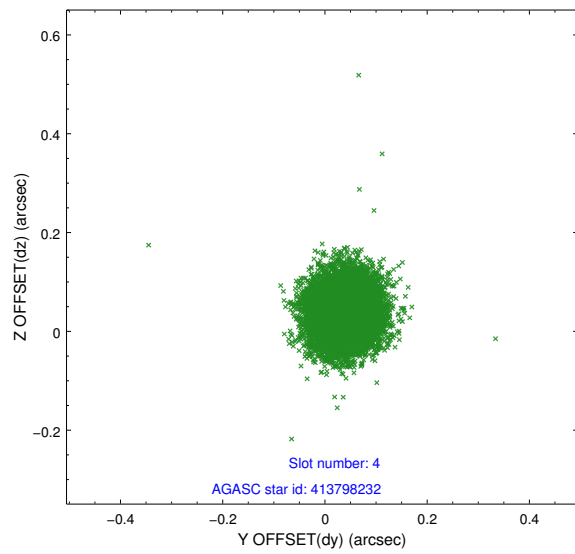
slot	status	id	mag	n_pts	med_dy	med_dz	dr1	dr2	ra	dec	mean_y	mean_z
0	FID	ACIS-I-1	7.23	4914	0.058	-0.054	0.009	0.019	0.000000	0.000000	926.25	-839.24
1	FID	ACIS-I-5	7.22	4914	-0.222	0.052	0.009	0.013	0.000000	0.000000	-1822.02	1058.29
2	FID	ACIS-I-6	7.24	4914	0.073	0.072	0.010	0.018	0.000000	0.000000	391.63	1703.00
3	GUIDE	413798056	8.89	9822	-0.036	0.077	0.079	0.128	309.494500	41.155486	161.38	-1642.87
4	GUIDE	413798232	8.29	9824	0.035	0.039	0.056	0.092	309.116117	41.044272	-722.86	-985.75
5	GUIDE	413799128	8.73	9824	0.069	0.003	0.074	0.124	307.948219	41.110579	-2177.87	1839.92
6	GUIDE	414326136	7.37	9823	-0.061	-0.122	0.053	0.091	308.256176	41.473642	-628.44	1806.71
7	GUIDE	414327224	7.97	9825	-0.012	0.005	0.061	0.100	309.355439	41.393115	685.85	-868.96

2.4 Star Slots

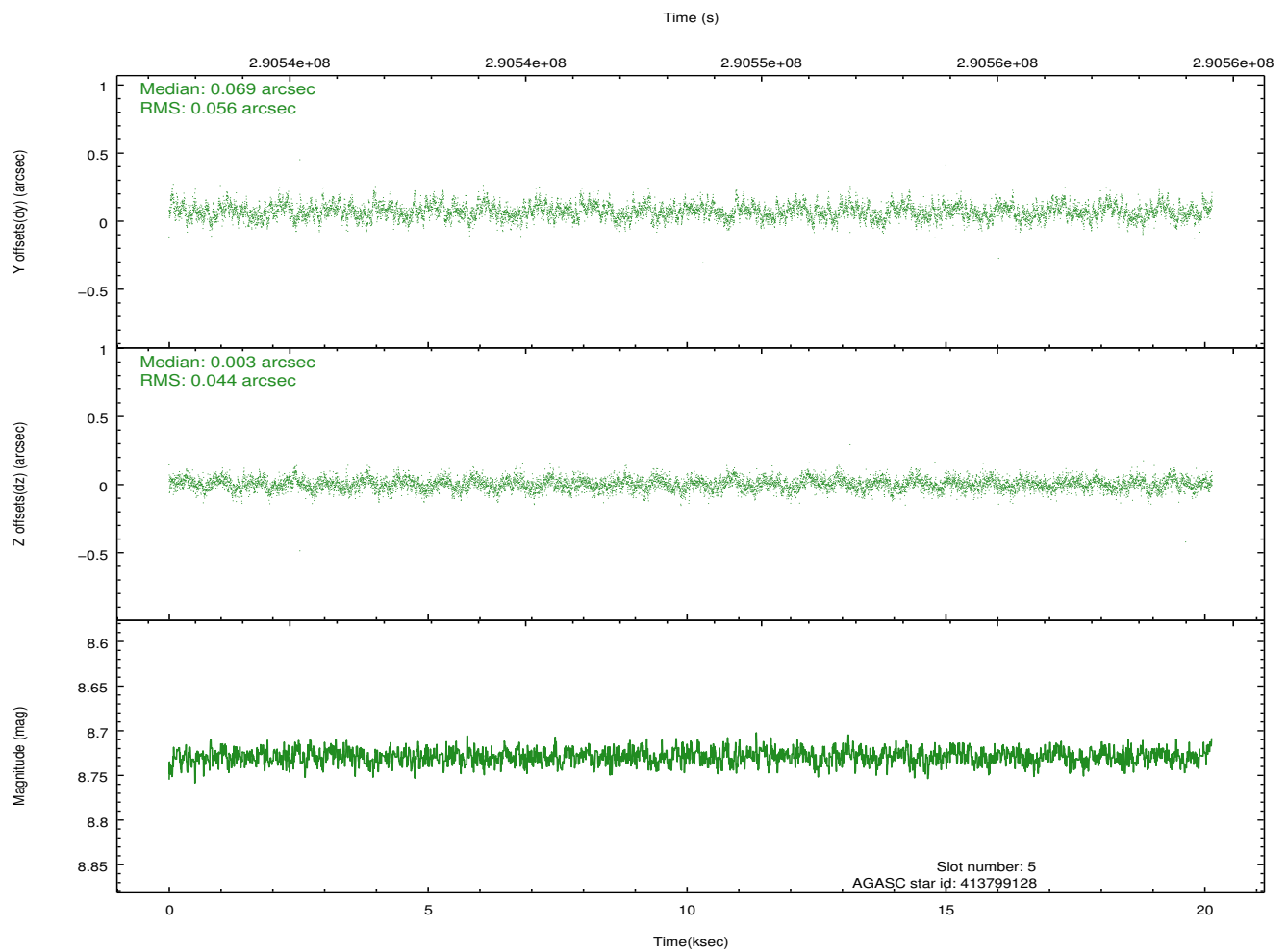
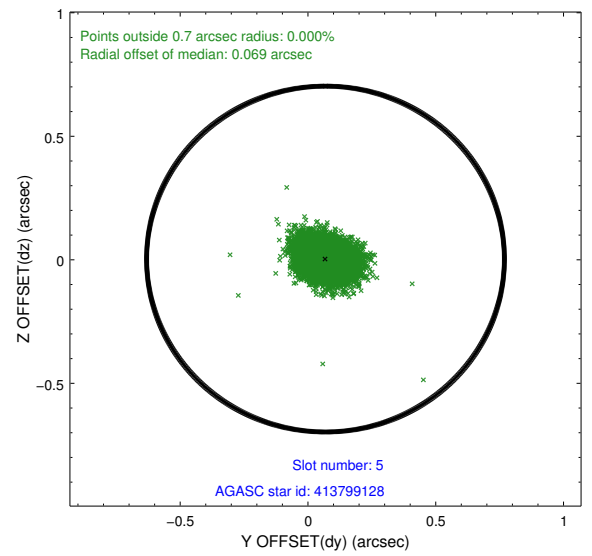
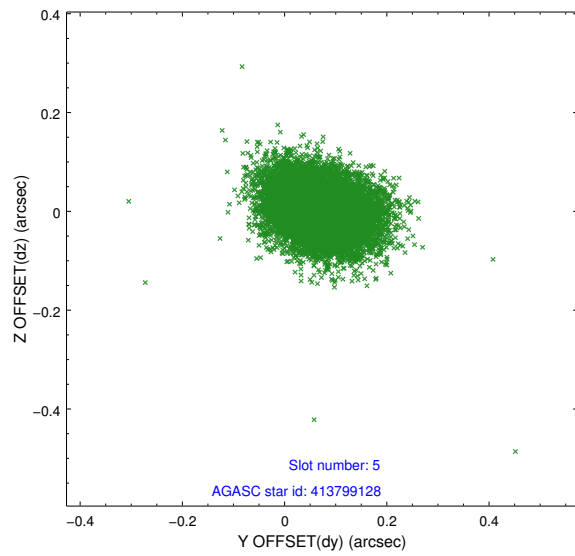
2.4.1 Slot 3



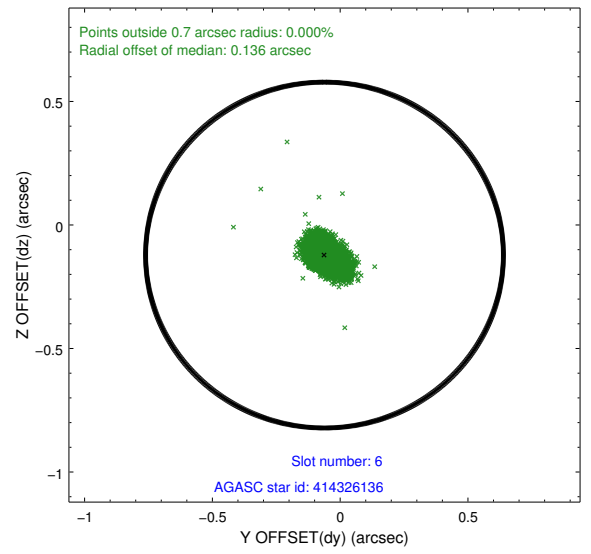
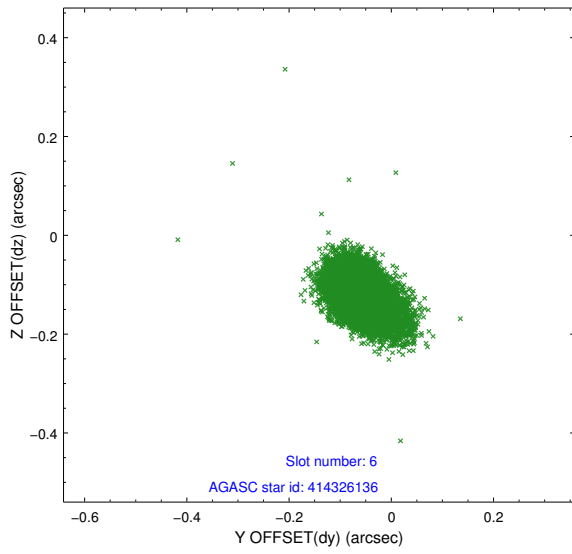
2.4.2 Slot 4



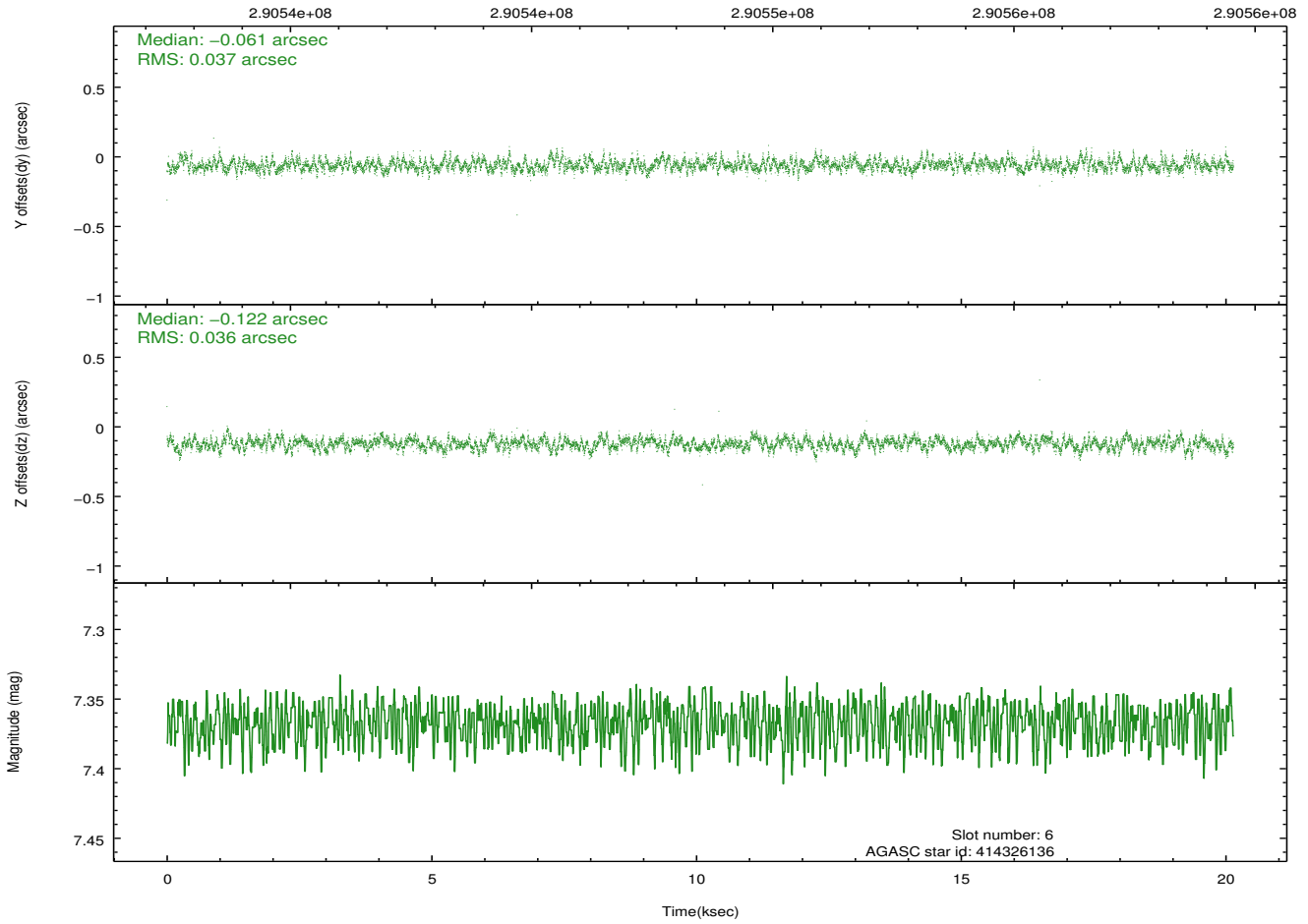
2.4.3 Slot 5



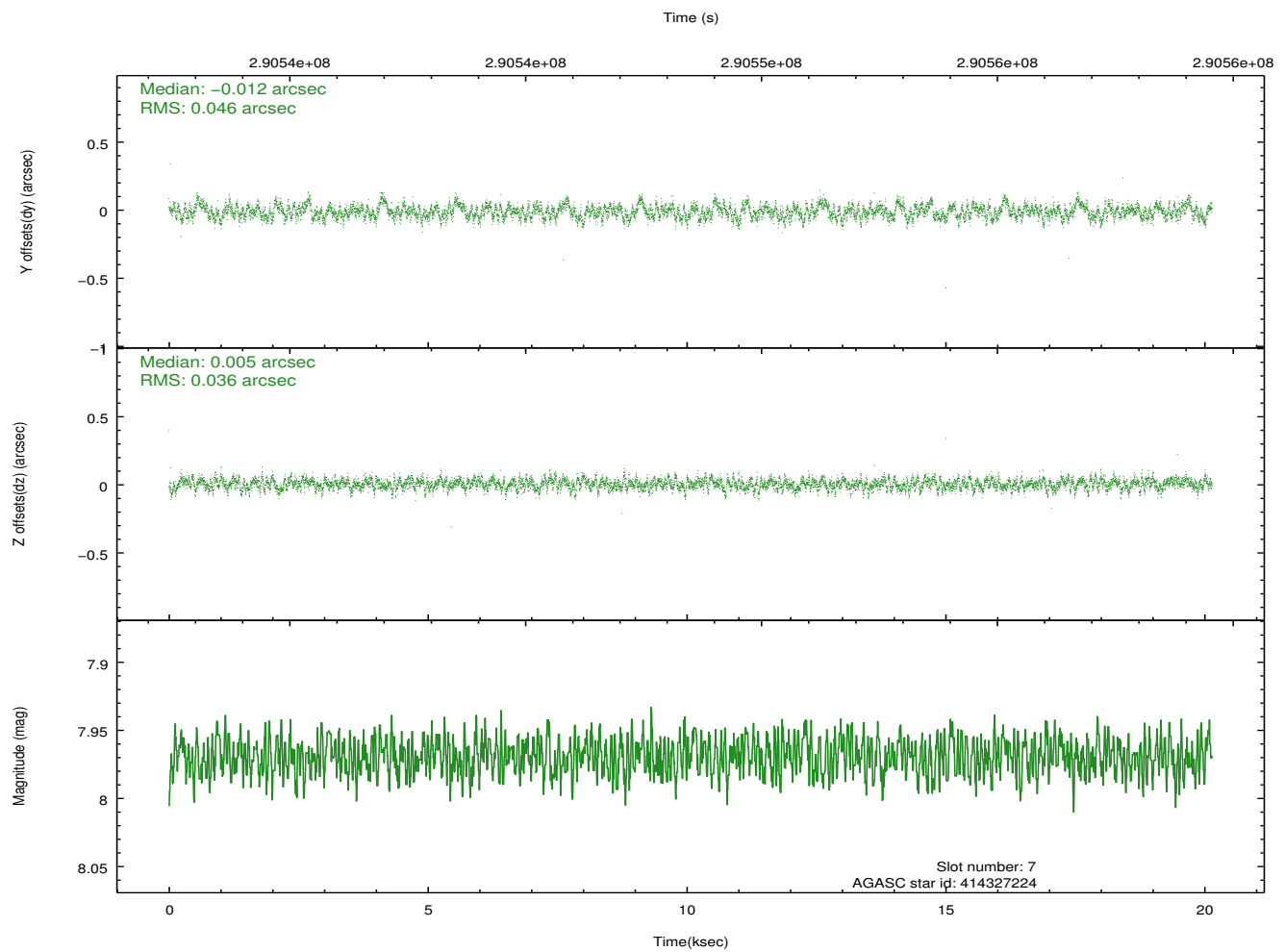
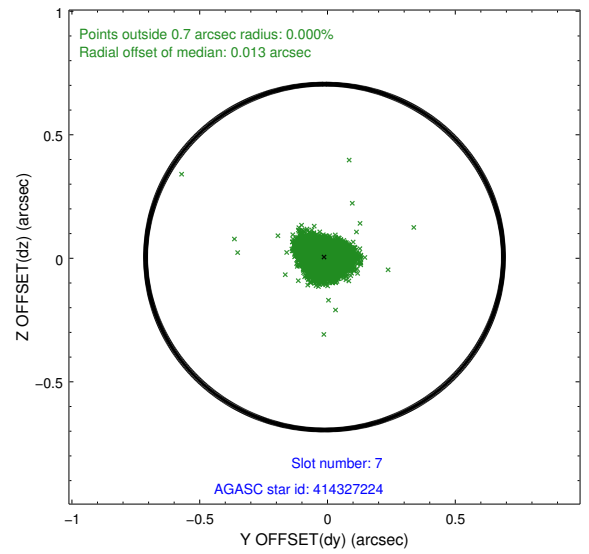
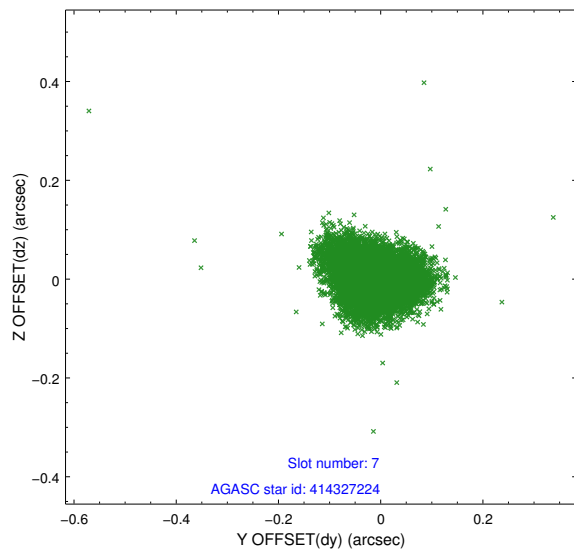
2.4.4 Slot 6



Time (s)

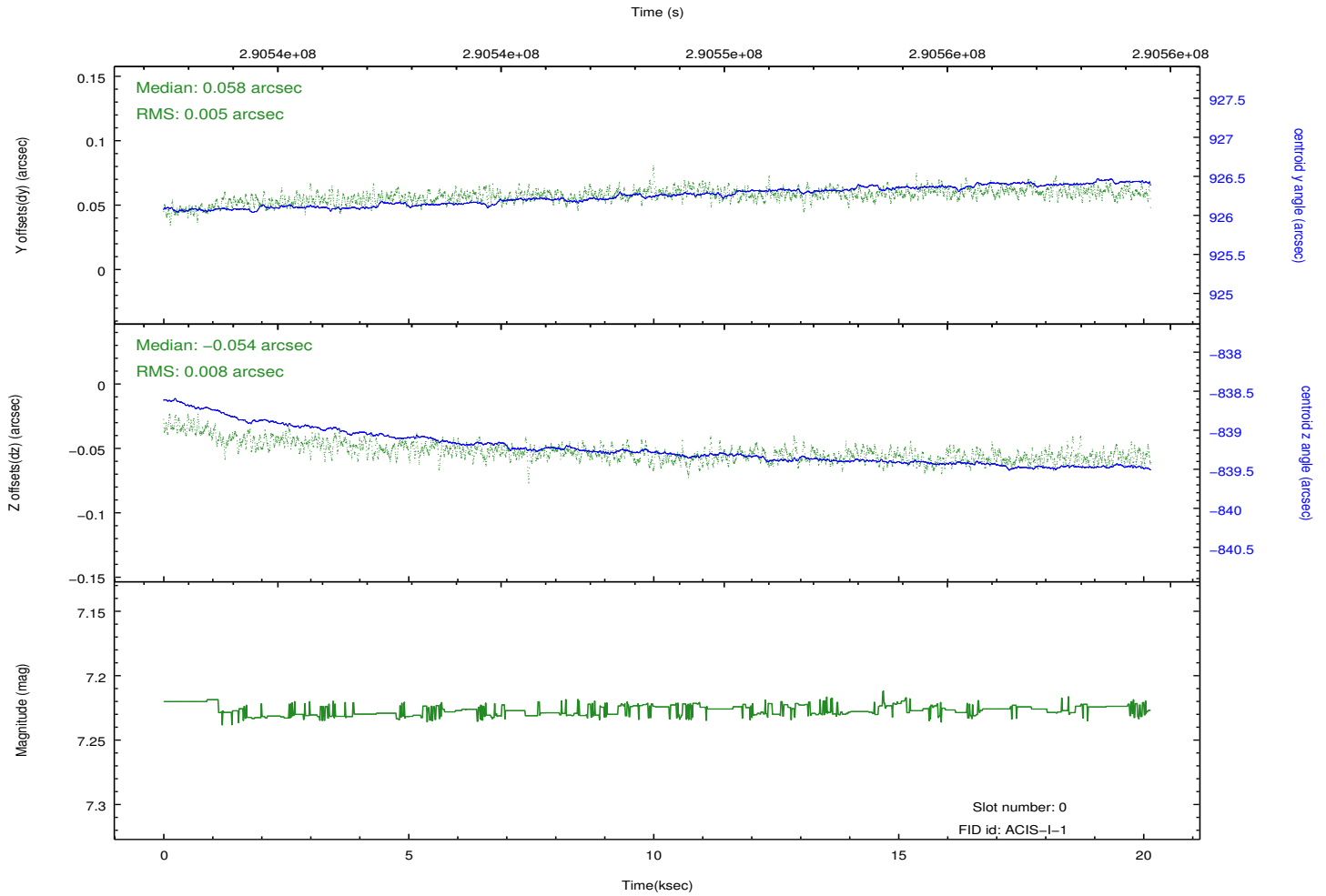
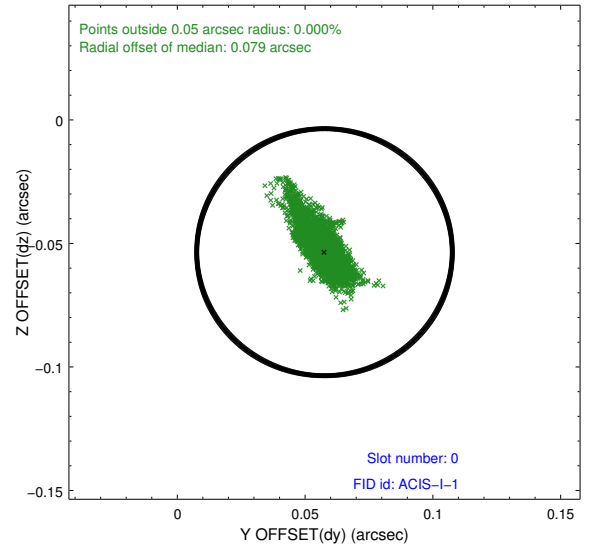
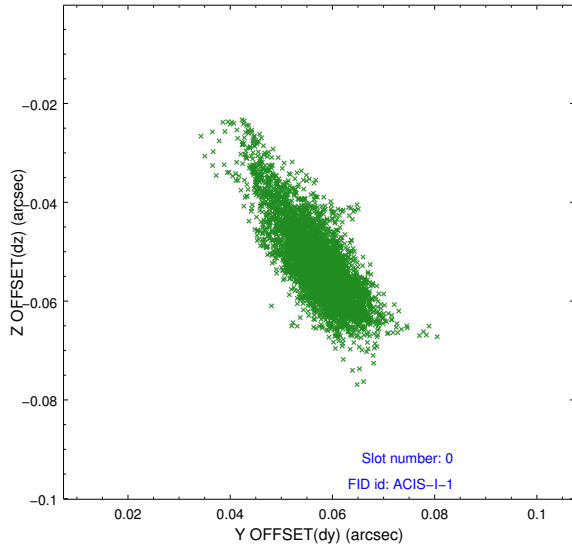


2.4.5 Slot 7

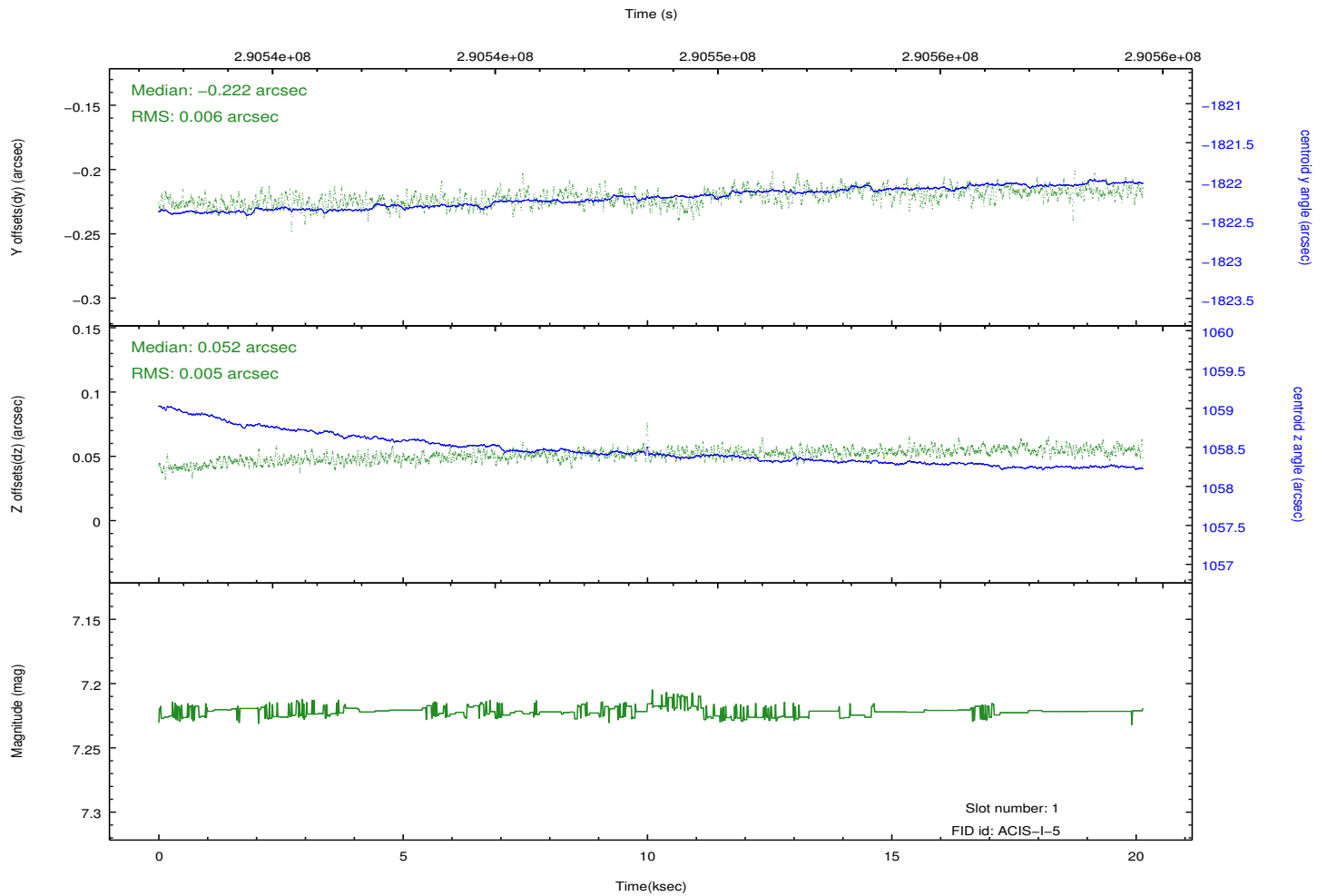
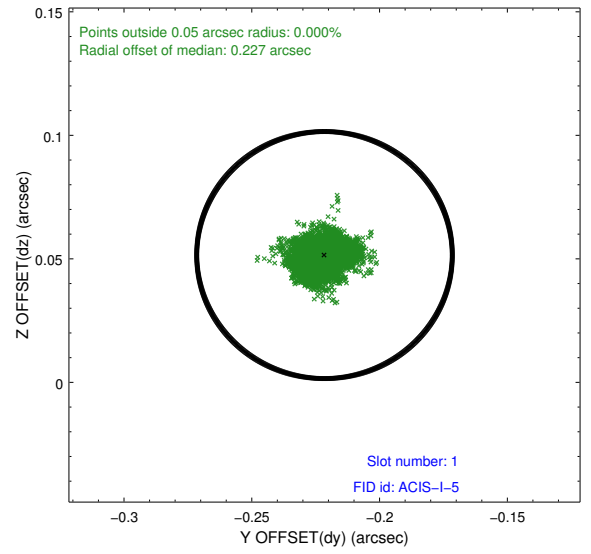
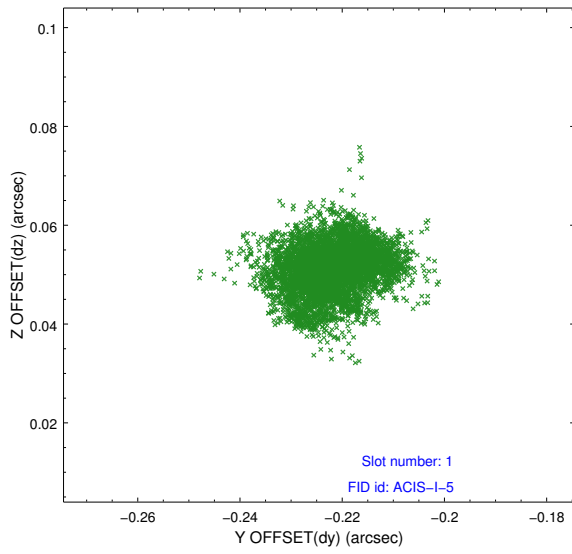


2.5 FID Slots

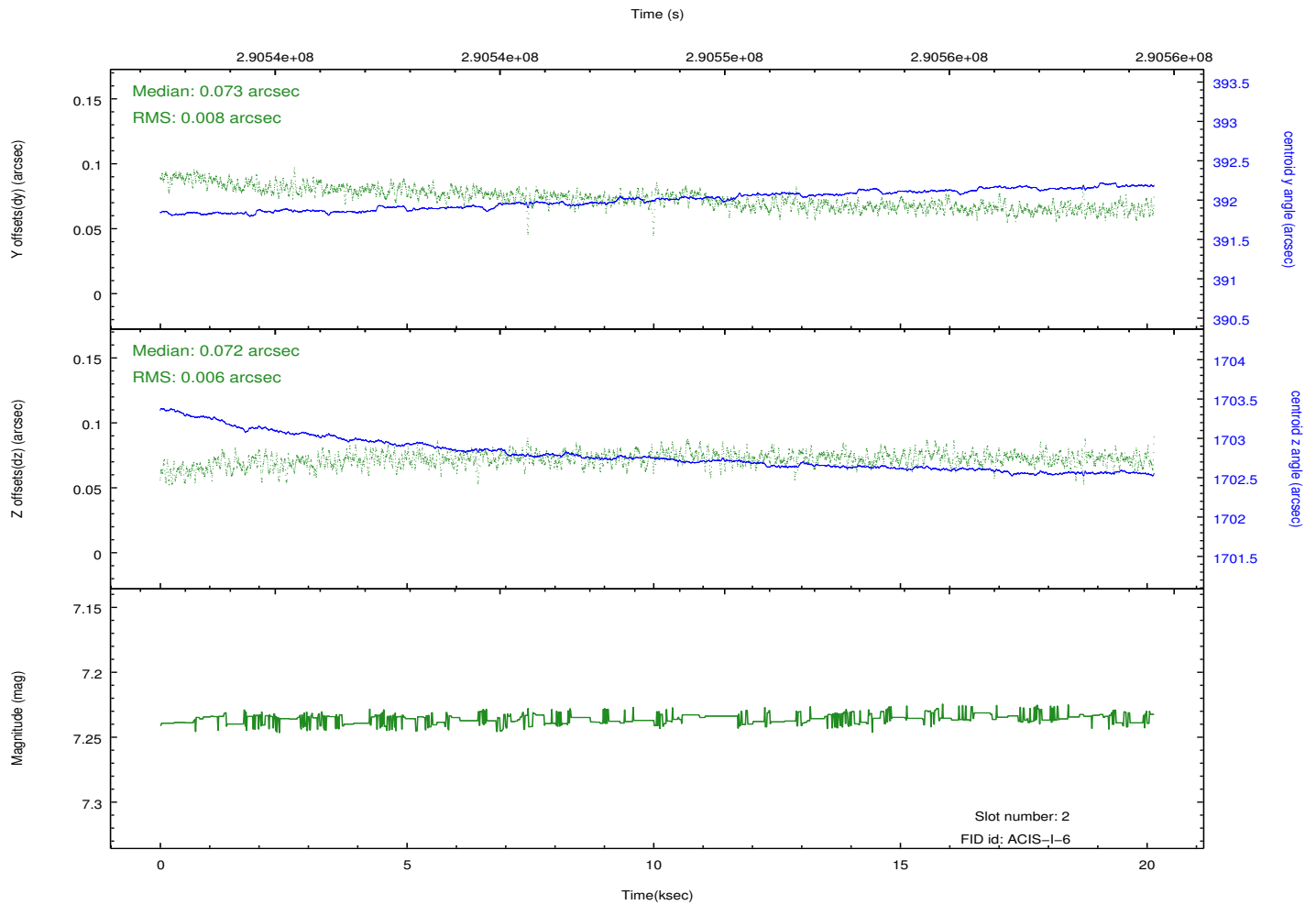
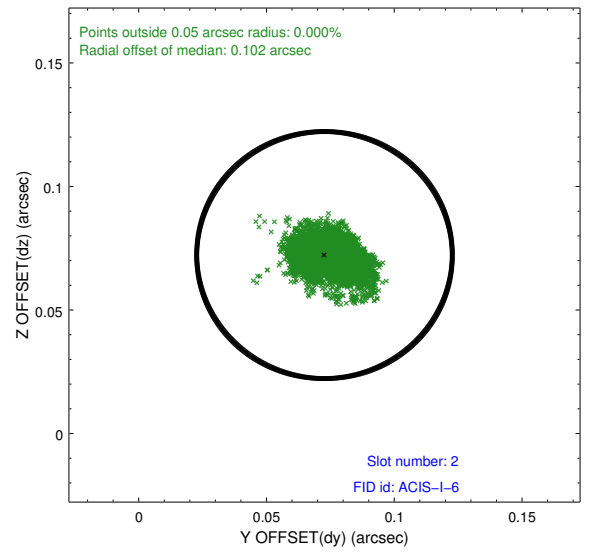
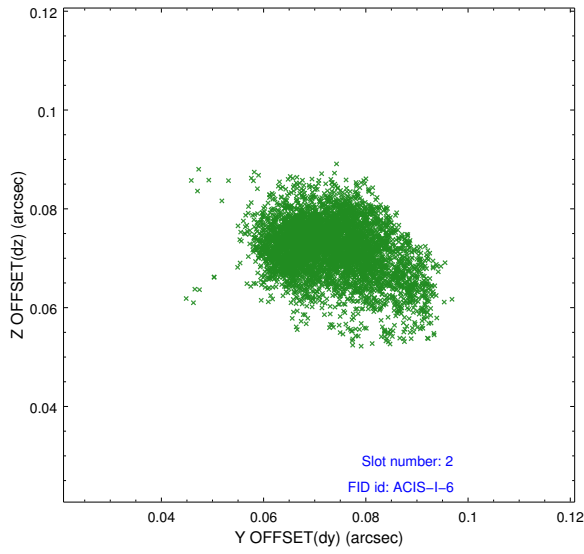
2.5.1 Slot 0



2.5.2 Slot 1



2.5.3 Slot 2



A Summary

A.1 Status

V&V Scientist	Beth Sundheim
V&V Date (YYYY-MM-DD)	2012.04.23
V&V Edition	1
V&V Disposition and Status	OK
V&V Charge Time	20.1420001

A.2 Comments