

# V&V Reference Report

## L2 ASCDS Version : 8.4.5

Observation 756 - L2 Version 6  
Chandra X-Ray Center

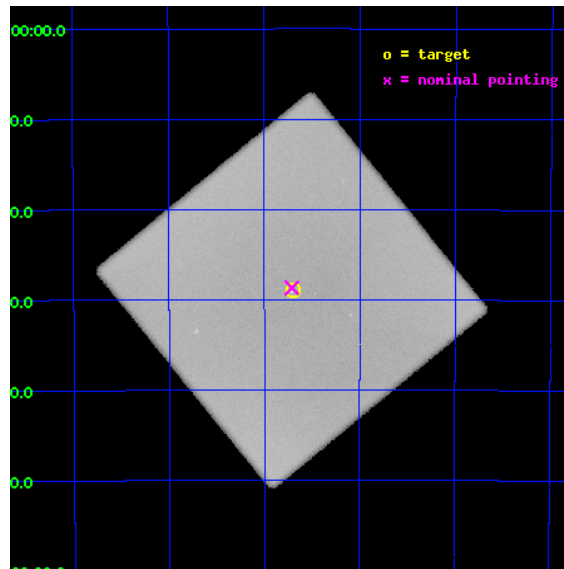
L2 Processing Date : Aug 22 2012

## Contents

<b>1</b>	<b>Front</b>	<b>2</b>
<b>2</b>	<b>OBI</b>	<b>3</b>
2.1	OBI . . . . .	3
2.1.1	Images . . . . .	3
2.1.2	Parameters . . . . .	4
2.1.3	Events . . . . .	4
2.2	Compared Parameters . . . . .	5
2.3	Aspect . . . . .	6
2.4	Star Slots . . . . .	9
2.4.1	Slot 3 . . . . .	9
2.4.2	Slot 4 . . . . .	10
2.4.3	Slot 5 . . . . .	11
2.4.4	Slot 6 . . . . .	12
2.4.5	Slot 7 . . . . .	13
2.5	FID Slots . . . . .	14
2.5.1	Slot 0 . . . . .	14
2.5.2	Slot 1 . . . . .	15
2.5.3	Slot 2 . . . . .	16
<b>A</b>	<b>Summary</b>	<b>17</b>
A.1	Status . . . . .	17
A.2	Comments . . . . .	17

# 1 Front

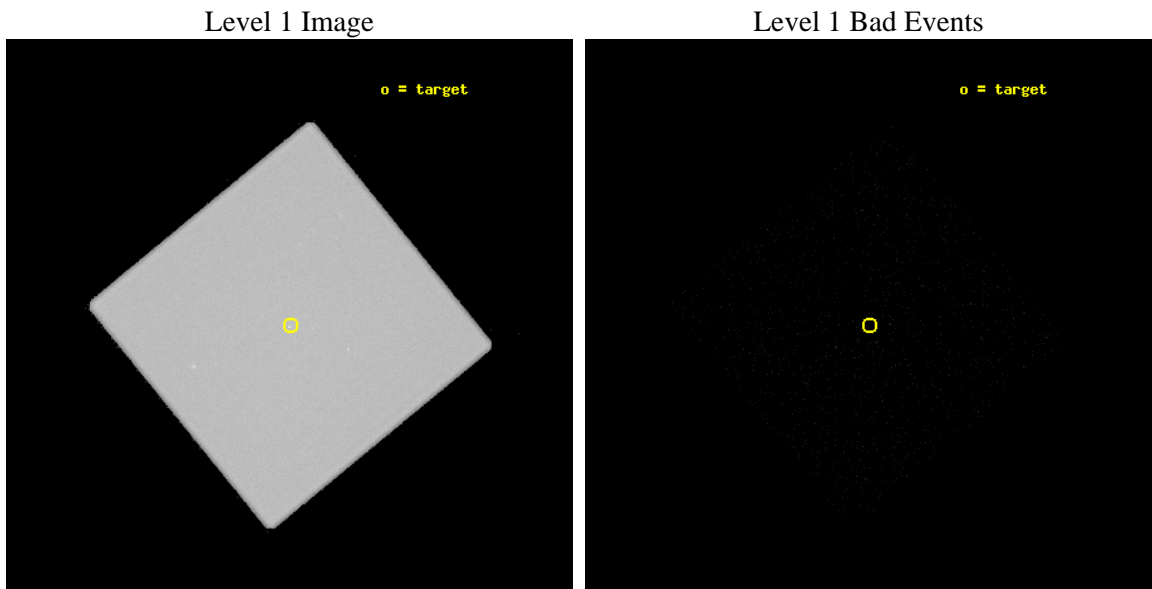
seq_num	500052	Sequence number
obs_id	756	Observation id
title	TEMPORAL, SPECTRAL, AND SPATIAL CHARACTERIZATION OF PSR B1706-44	P
observer	PROF. John Finley	Principal investigator
object	PSR B1706-44	Source name
ra_targ	257.425833	Observer's specified target RA [deg]
dec_targ	-44.4825	Observer's specified target Dec [deg]
ra_nom	257.42772114227	Nominal RA [deg]
dec_nom	-44.478073153791	Nominal Dec [deg]
roll_nom	95.762351524934	Nominal Roll [deg]
revision	6	Processing version of data
ontime	46270.807936557	[s]
livetime	45832.394340873	Ontime multiplied by DTCOR
l2events	2728829	Number of level 2 events



## 2 OBI

### 2.1 OBI

#### 2.1.1 Images



### 2.1.2 Parameters

obi_num	1	Obi number	sched_exp_time	45997.875000	[s] Scheduled observation exposure time
ascdsver	8.4.5	Processing system revision	ontime	46270.807936557	[s]
caldbver	4.5.1.1	&#160	l1events	4509603	Number of level 1 events
date	2012-08-22T14:32:31	Date and time of file creation			
revision	6	Processing version of data			

### 2.1.3 Events

#### Level 1 Events

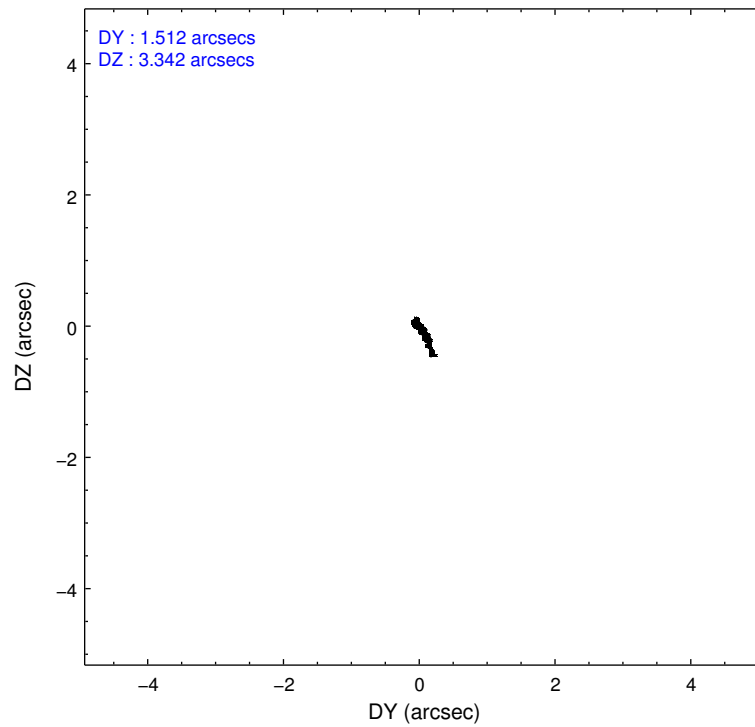
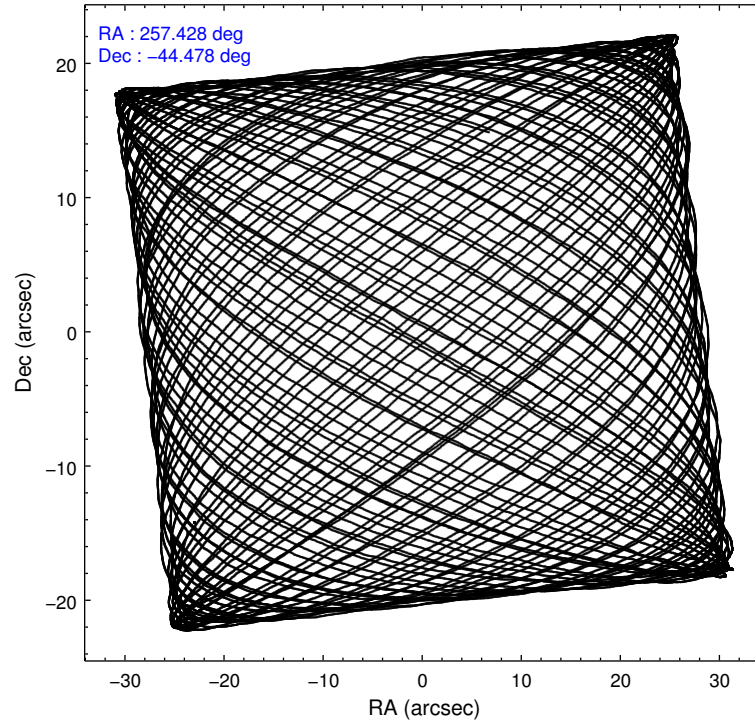
	<b>segment 0</b>
level 1 events	4509603
rejected events	11327
rejected %	0%

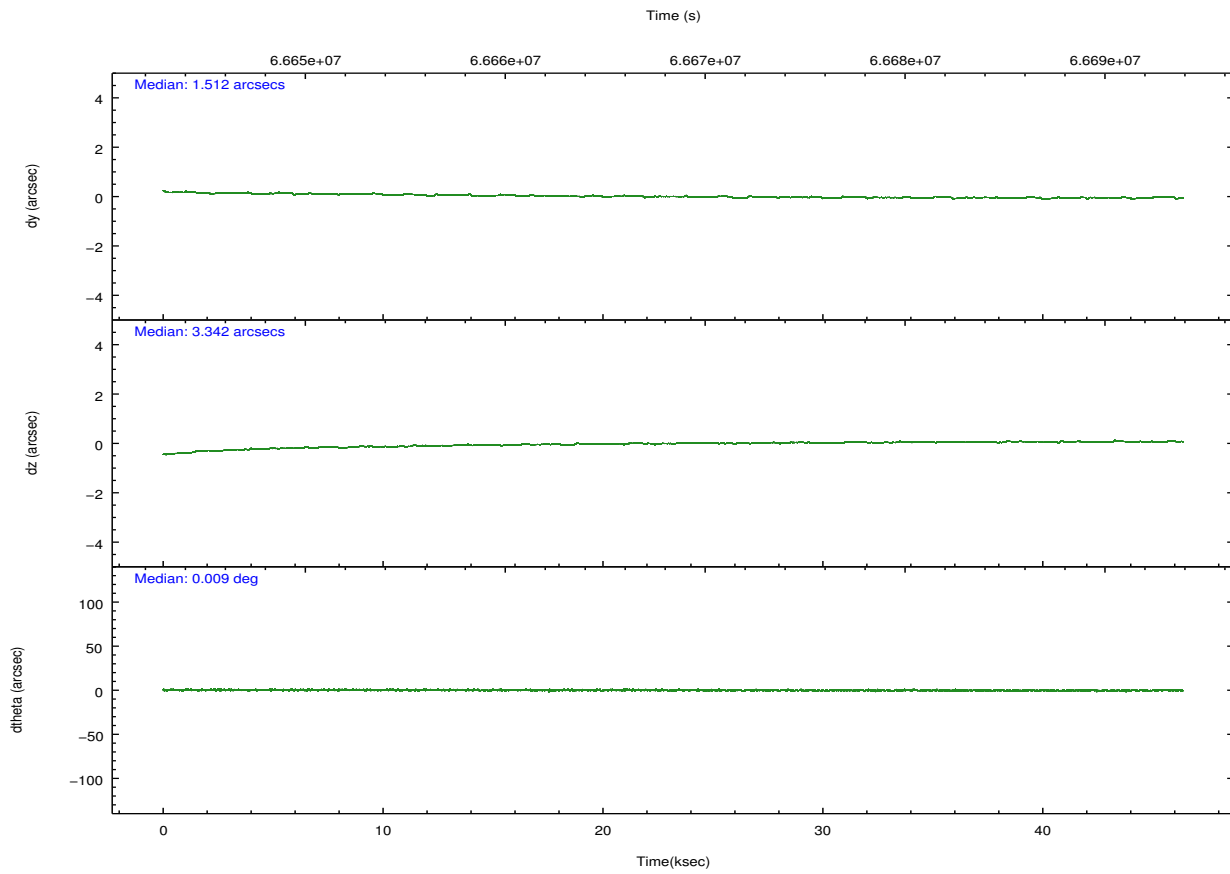
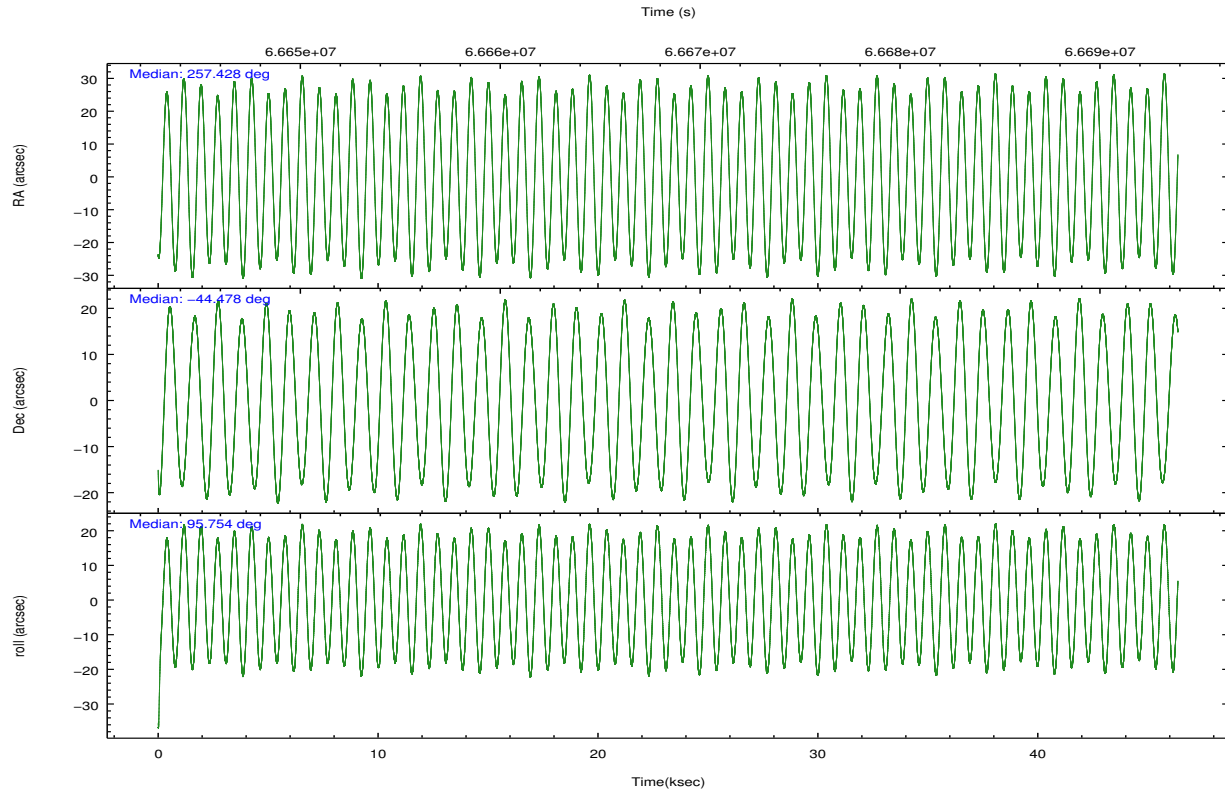
## 2.2 Compared Parameters

Parameter	Planned	Actual
Instrument	HRC	HRC
Detector	HRC-I	HRC-I
Grating	NONE	NONE
Data mode	OBSERVING	OBSERVING
Observation mode	POINTING	POINTING
[deg] Pointing RA	257.450446	257.4277211422692
[deg] Pointing Dec	-44.500128	-44.47807315379058
[deg] Pointing Roll	95.873767	95.76235152493419
[mm] SIM focus pos	-1.040293	-1.038866356238299
[mm] SIM defocus	0	0.001426264420575141
[mm] SIM translation stage pos	126.985494	126.9829799899862
[mm] SIM translation stage offset	0	0.002508901615314585
[s] Observation start time (MET)	66645584.184000	66644082.552726
Observation start date	2000-02-11T08:38:40	2000-02-11T08:14:42
[s] Observation end time (MET)	66691581.184000	66692203.74198
Observation end date	2000-02-11T21:25:17	2000-02-11T21:36:43

Parameter	Planned	Actual
Obspar format version number	7	7
Obspar file type	PREDICTED	ACTUAL
Obspar update status	NONE	UPDATED

## 2.3 Aspect



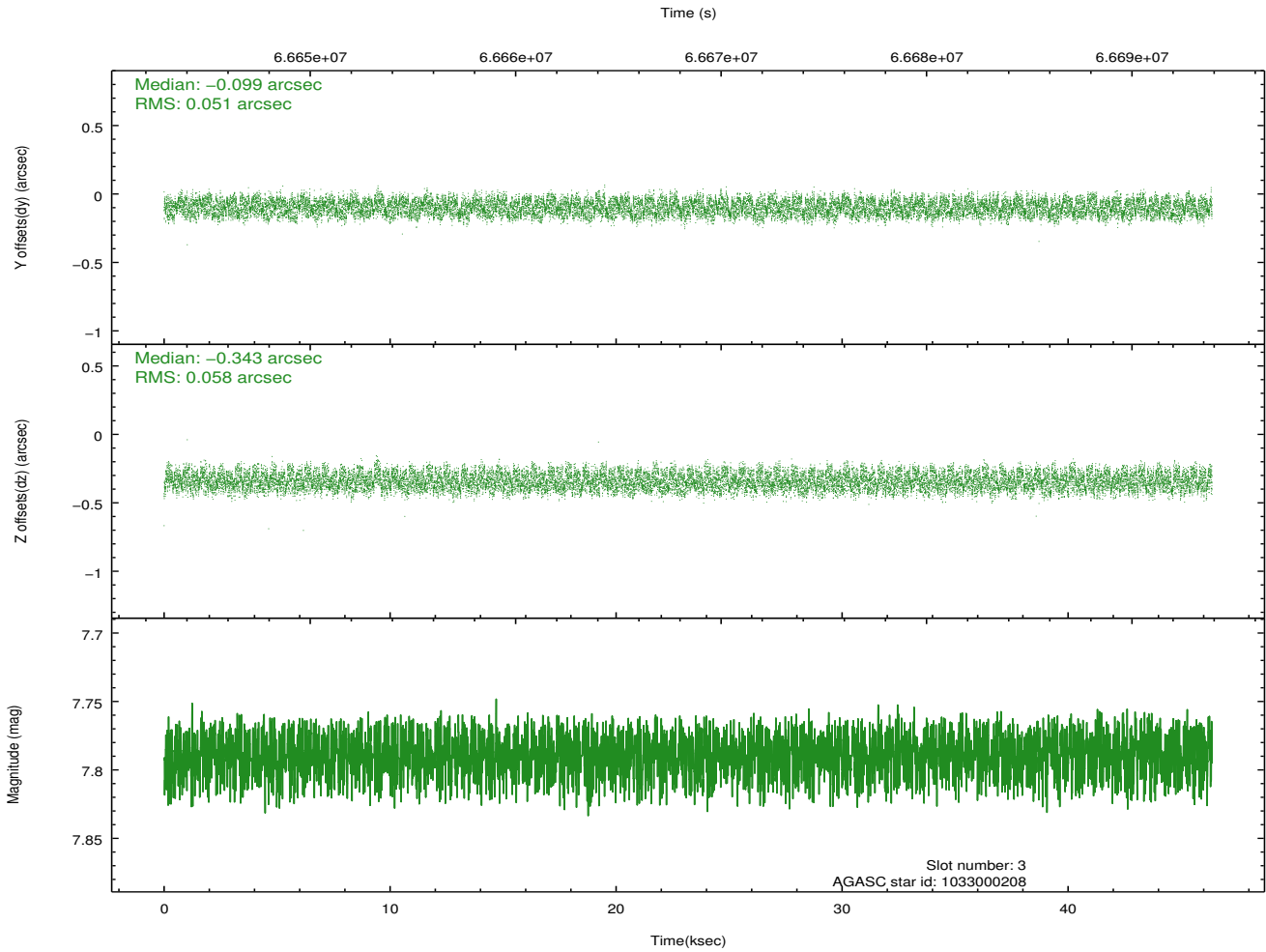
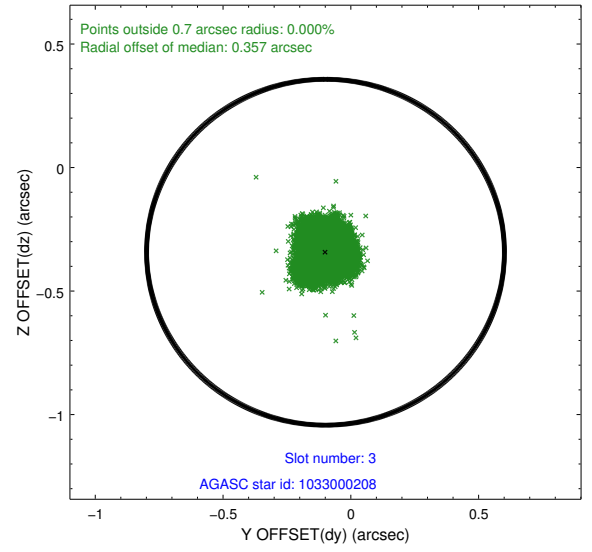
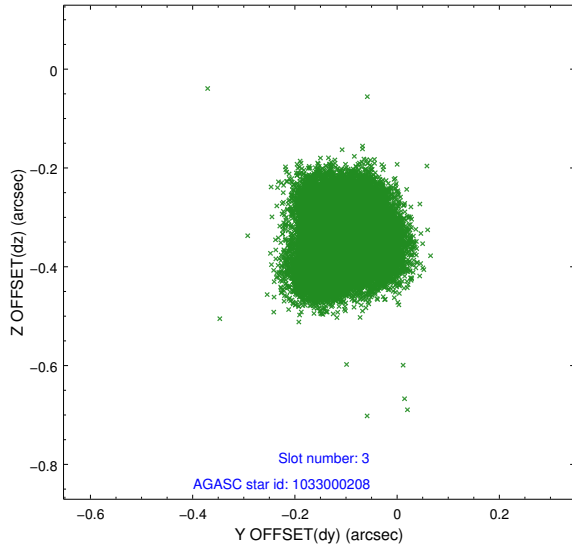


### Slot Statistics

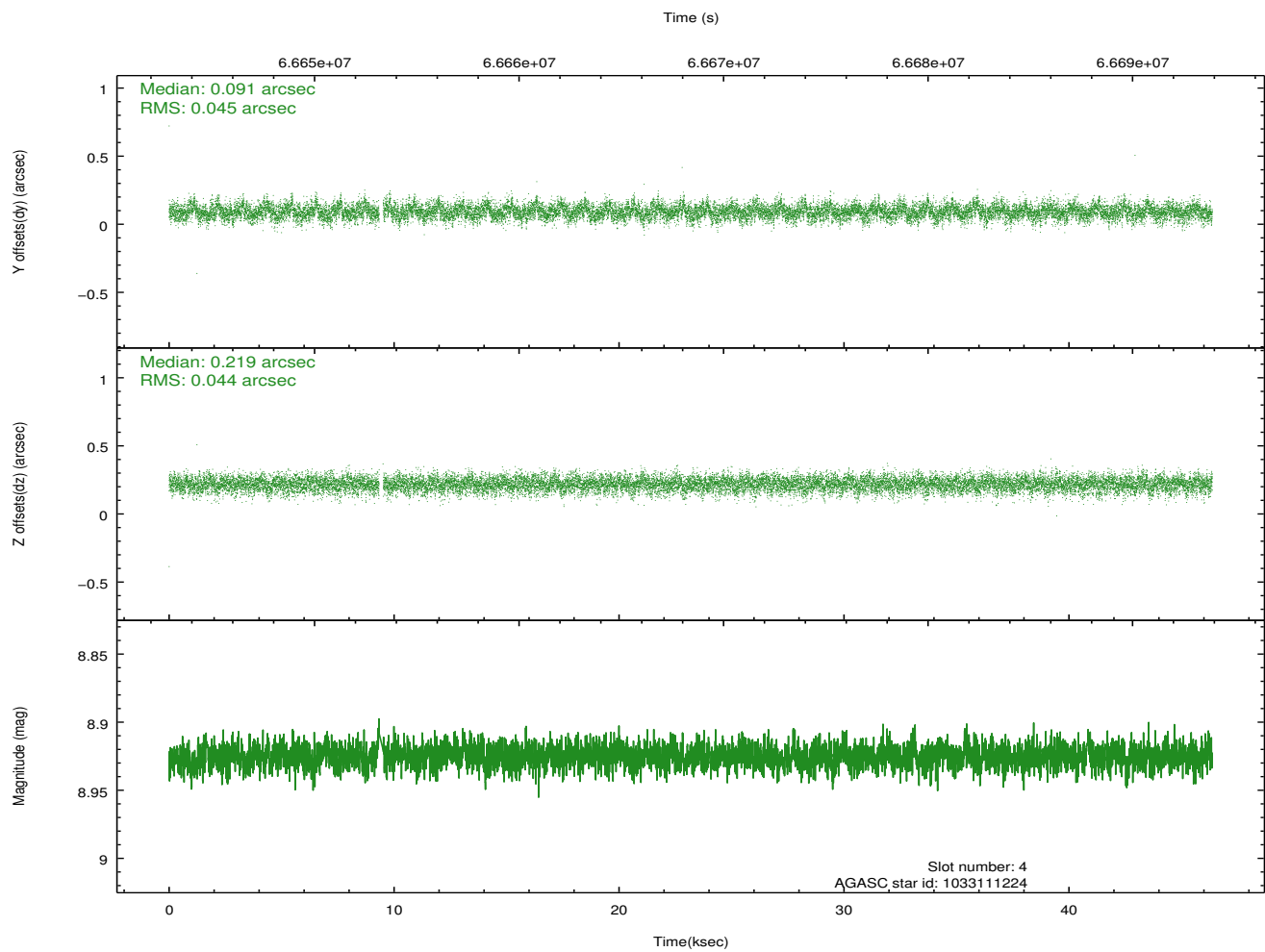
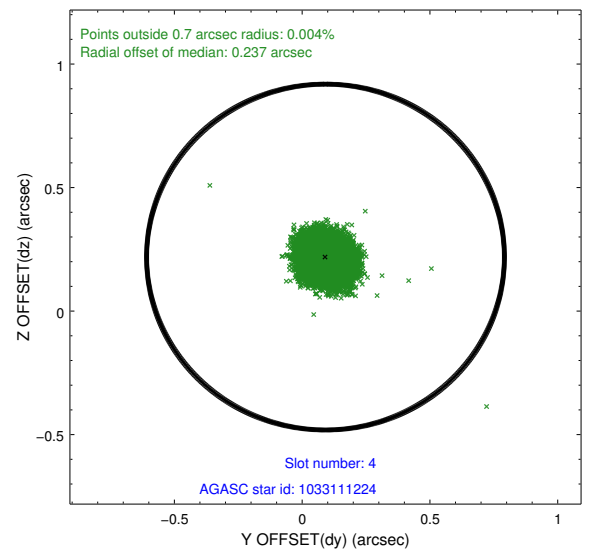
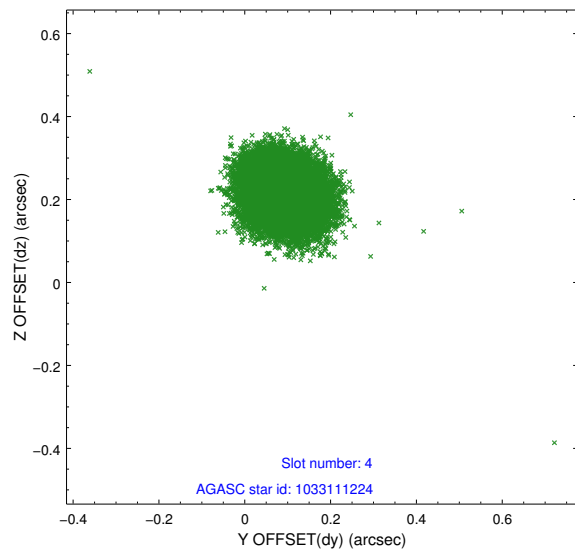
slot	status	id	mag	n_pts	med_dy	med_dz	dr1	dr2	ra	dec	mean_y	mean_z
0	FID	HRC-I-1	6.94	11310	0.063	0.033	0.007	0.012	0.000000	0.000000	-756.92	-1290.99
1	FID	HRC-I-3	7.03	11311	0.043	-0.057	0.008	0.013	0.000000	0.000000	-1185.47	1013.37
2	FID	HRC-I-4	6.98	11311	0.009	-0.065	0.005	0.009	0.000000	0.000000	1285.74	1011.14
3	GUIDE	1033000208	7.79	22618	-0.099	-0.343	0.085	0.124	256.502750	-44.372681	690.77	2380.09
4	GUIDE	1033111224	8.93	22519	0.091	0.219	0.067	0.109	257.844751	-44.847109	-1348.43	-872.97
5	GUIDE	1032980648	8.99	22610	-0.099	-0.287	0.092	0.141	256.588109	-44.440758	426.63	2183.82
6	GUIDE	1033112048	9.01	22612	0.095	0.279	0.097	0.155	258.432329	-44.729220	-1092.72	-2411.91
7	GUIDE	1033111096	9.65	22599	0.011	0.136	0.093	0.151	257.807432	-44.097992	1343.04	-1065.86

## 2.4 Star Slots

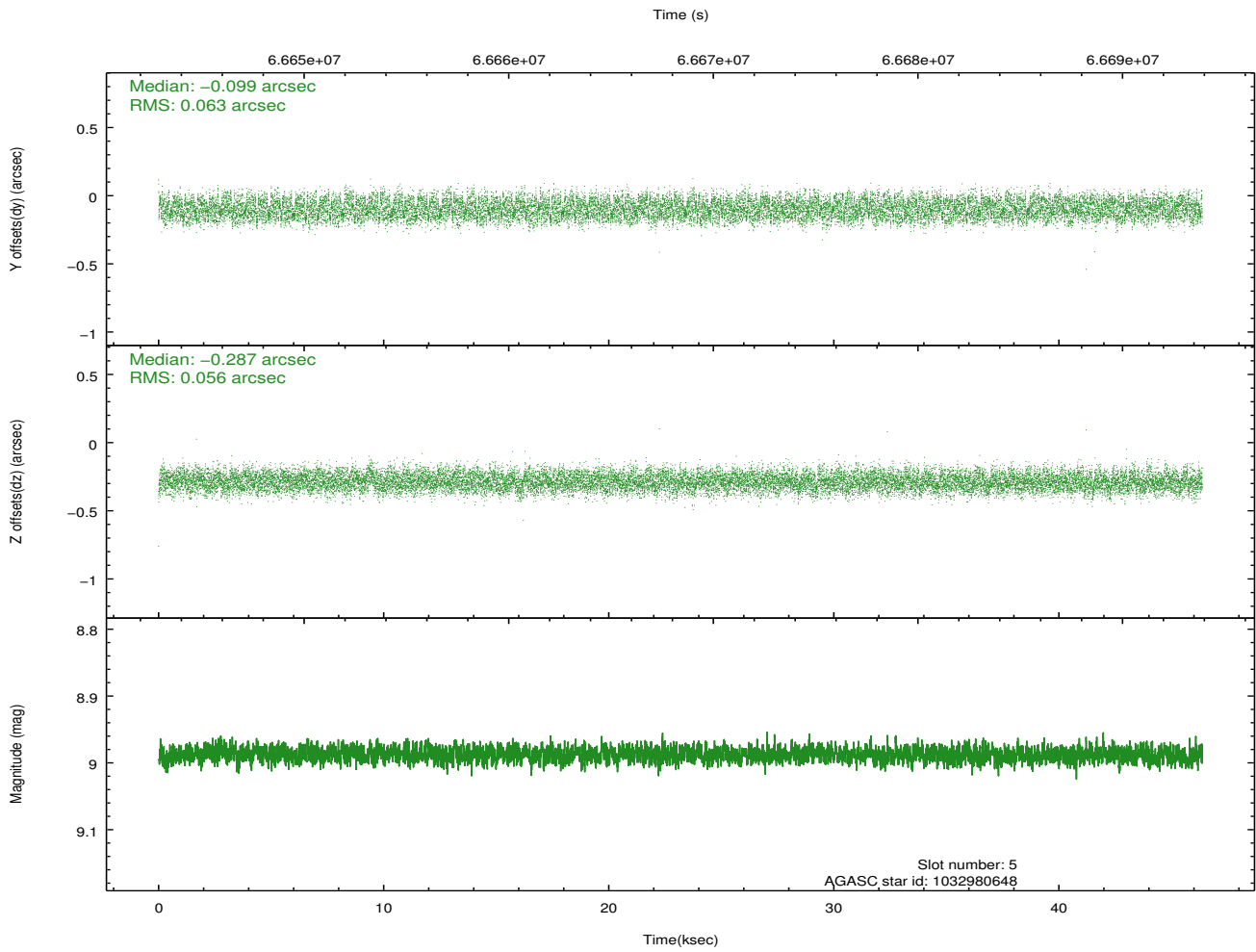
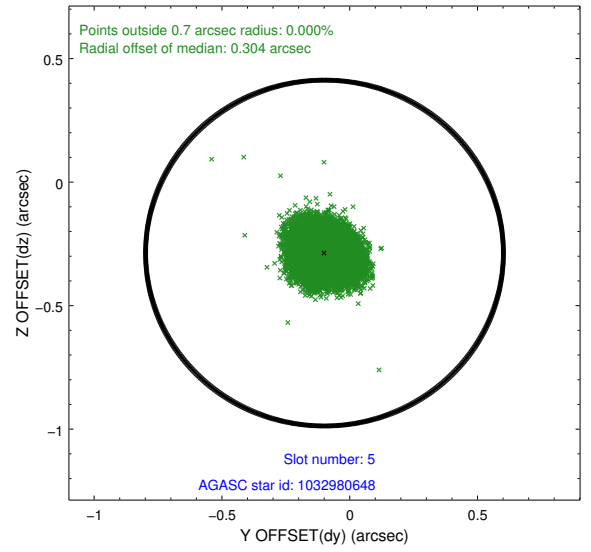
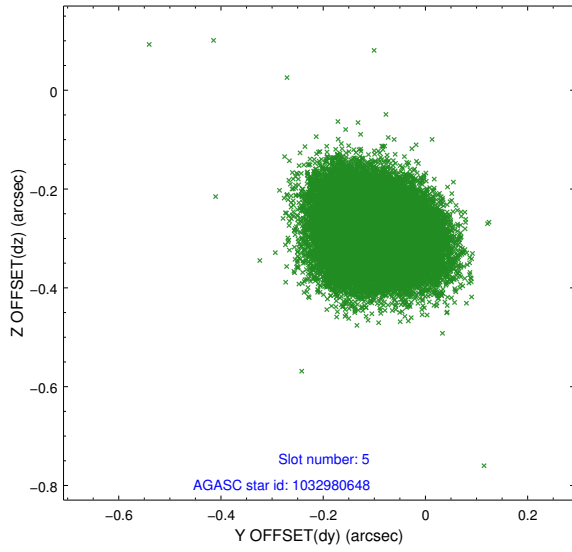
### 2.4.1 Slot 3



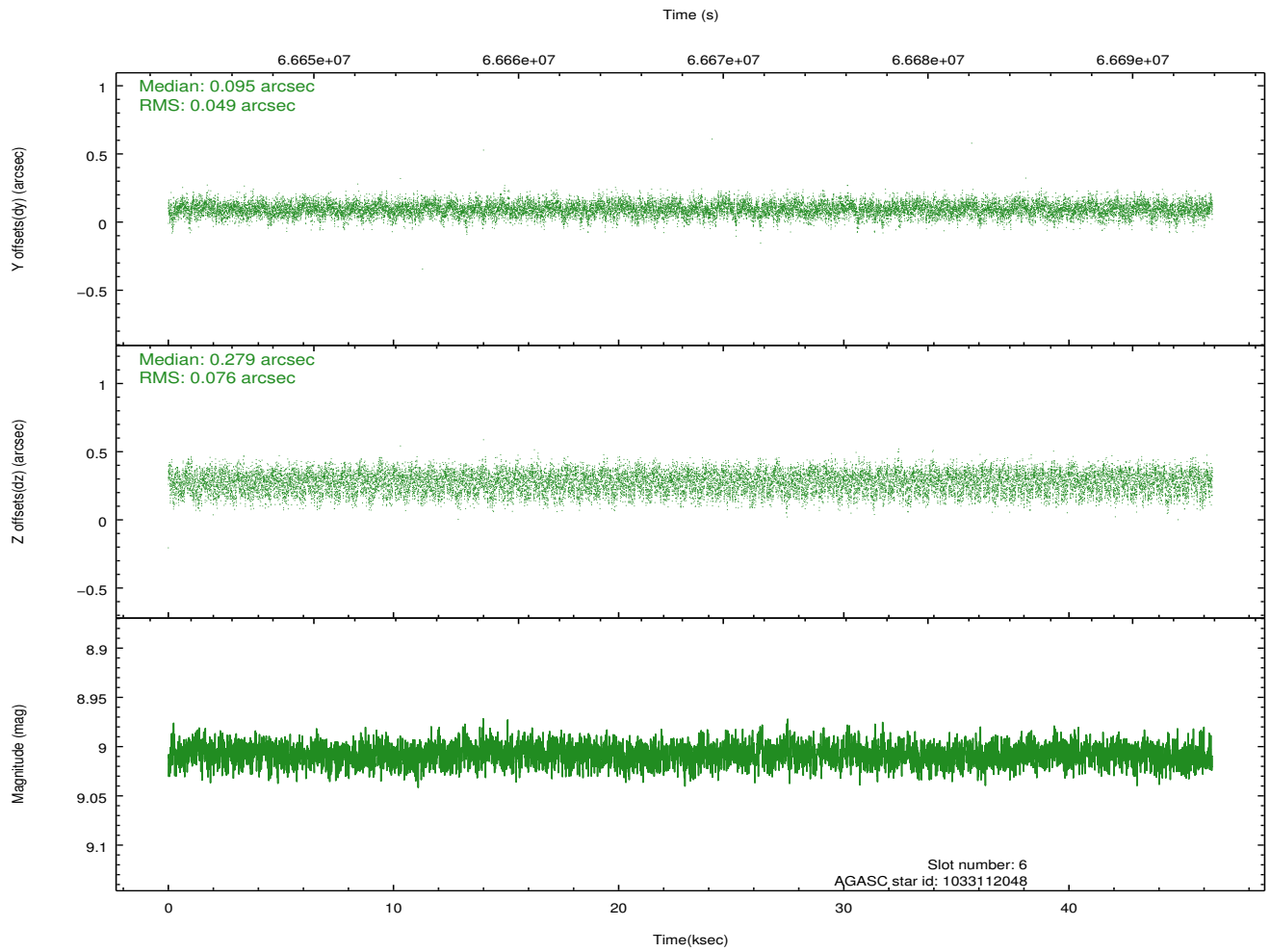
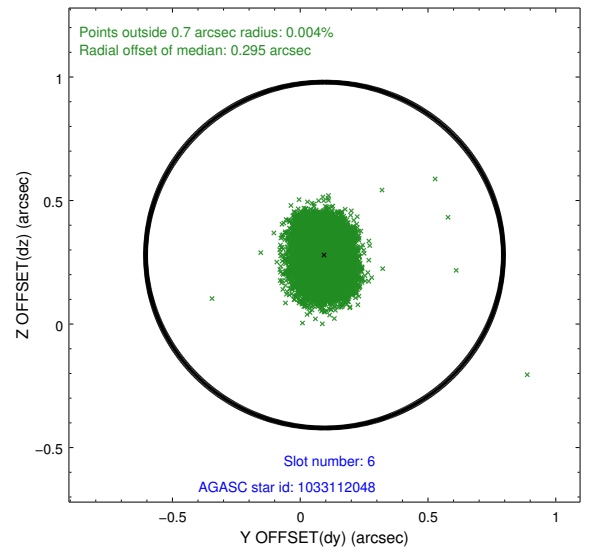
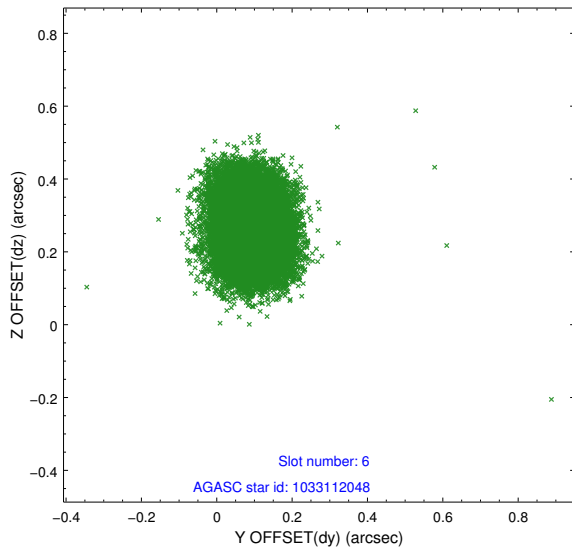
## 2.4.2 Slot 4



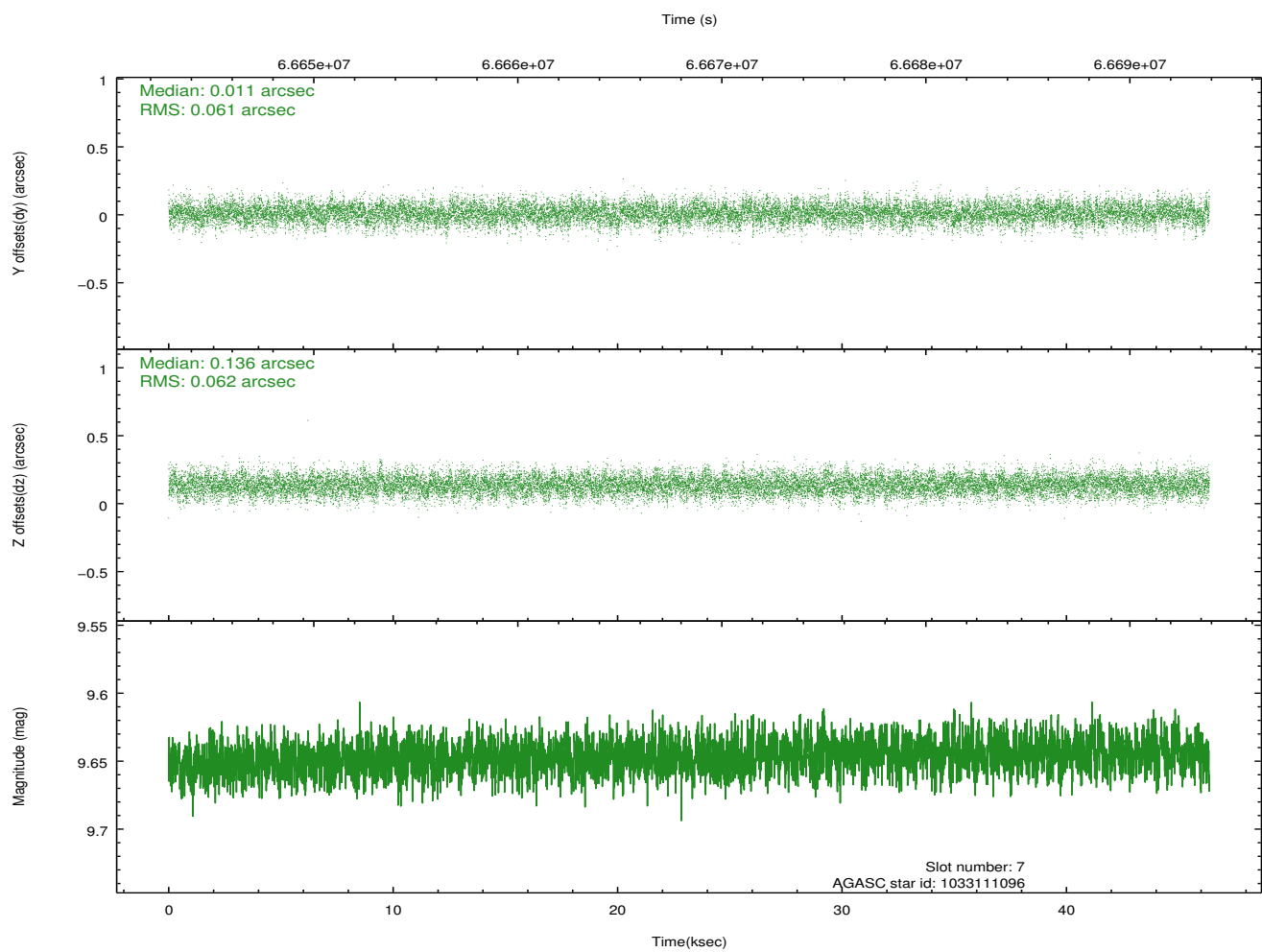
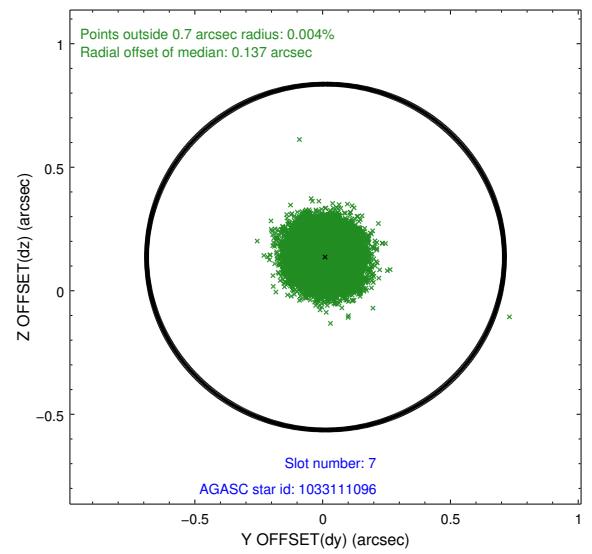
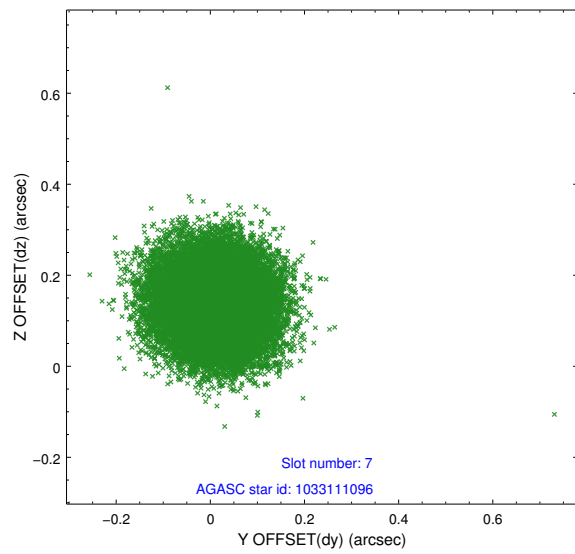
### 2.4.3 Slot 5



## 2.4.4 Slot 6

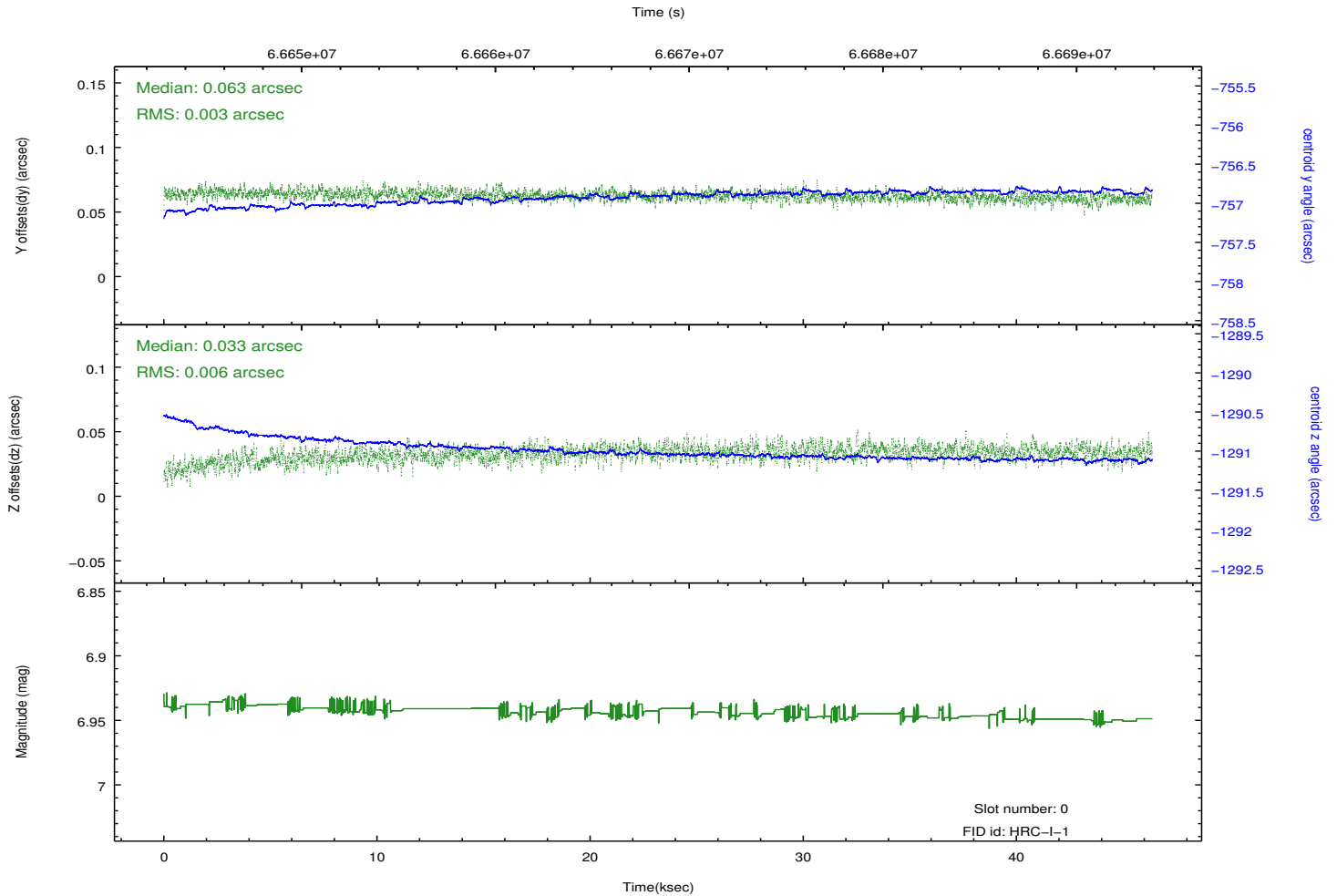
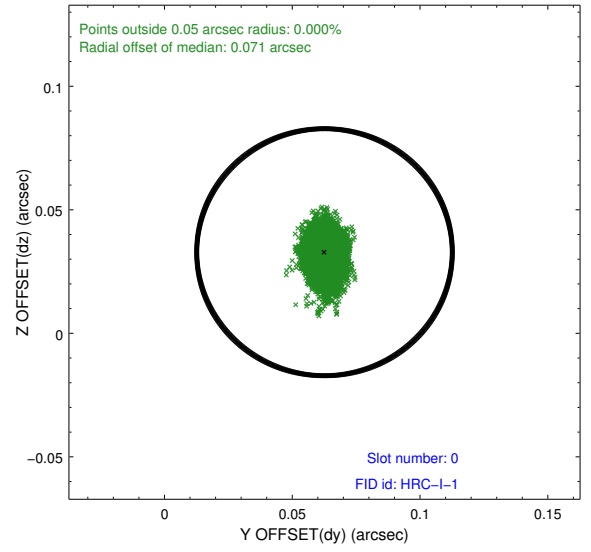
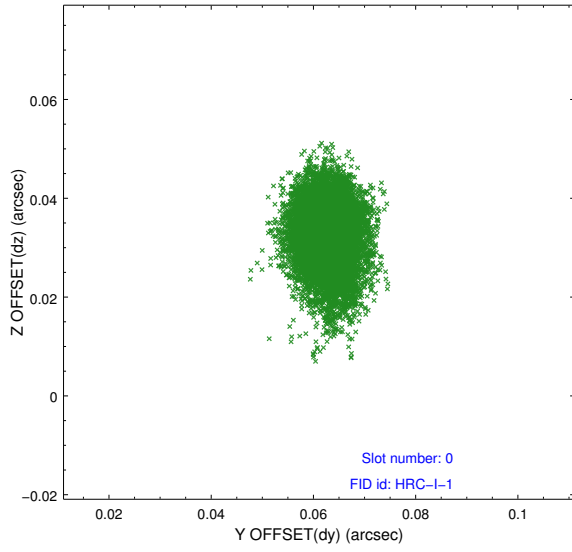


## 2.4.5 Slot 7

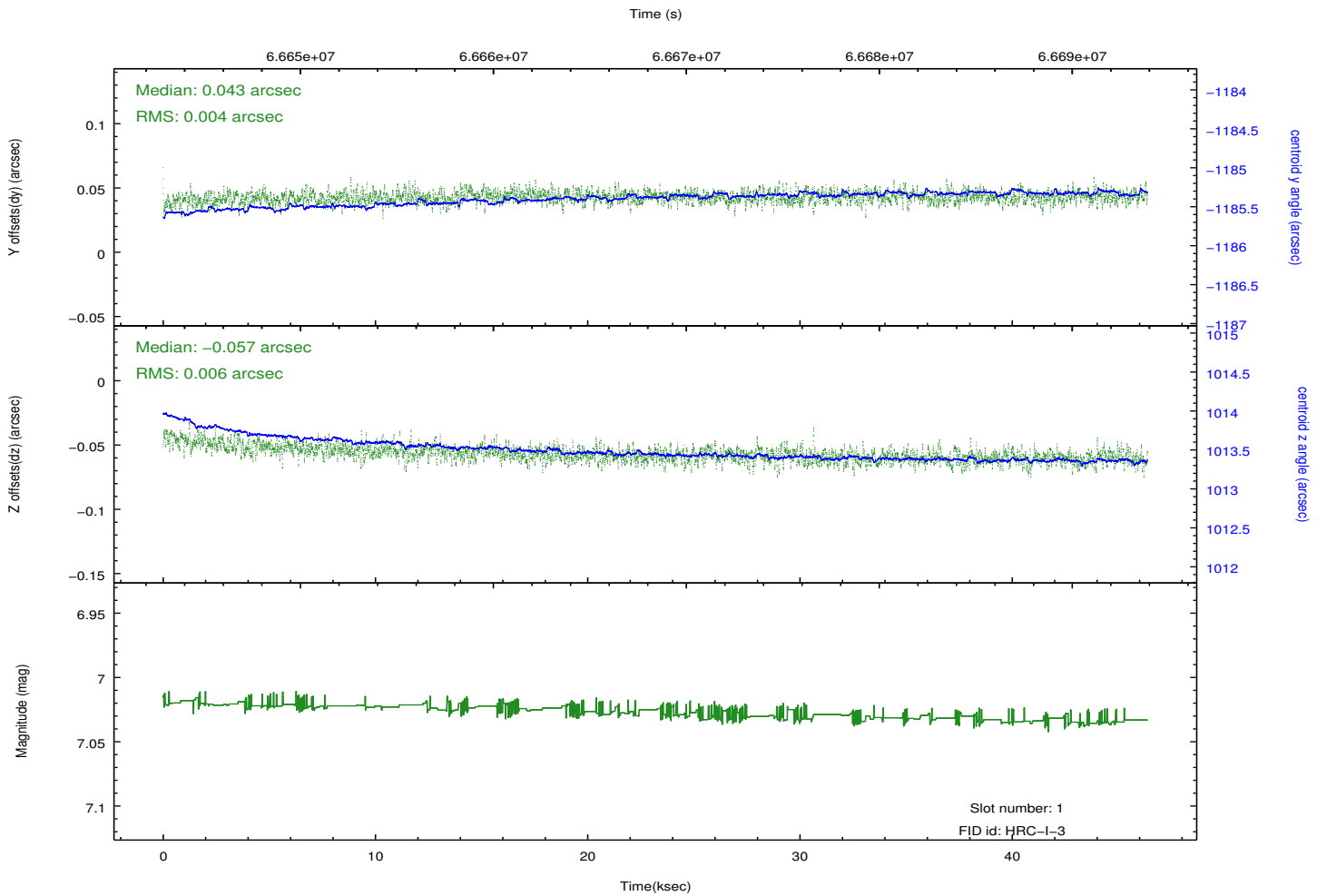
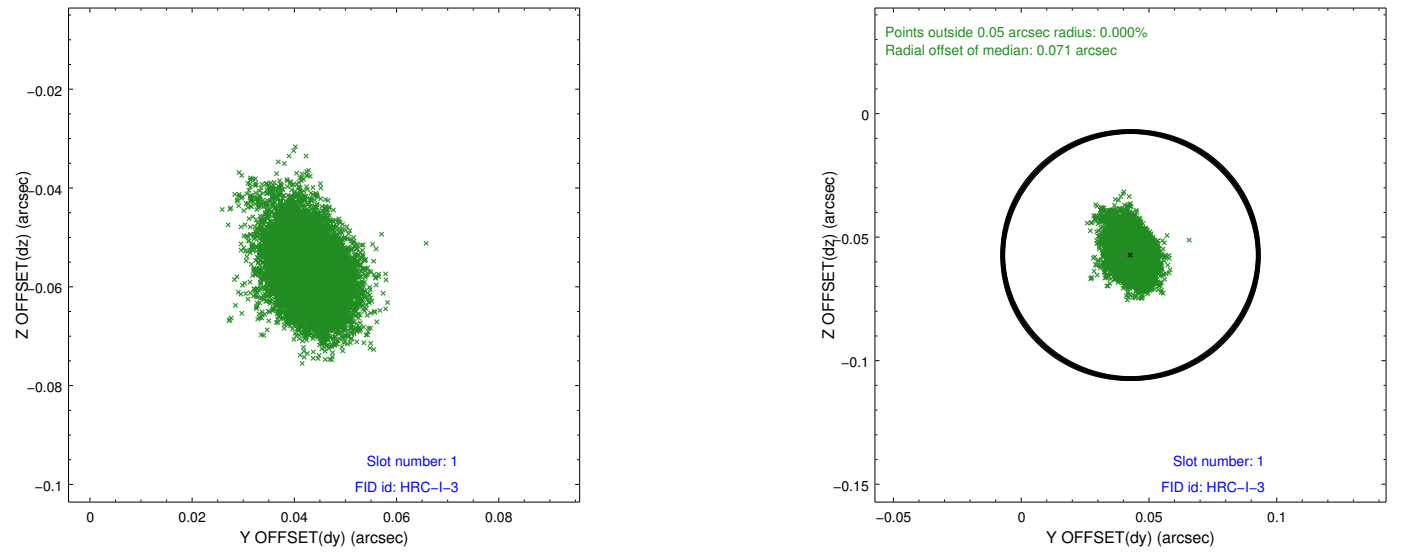


## 2.5 FID Slots

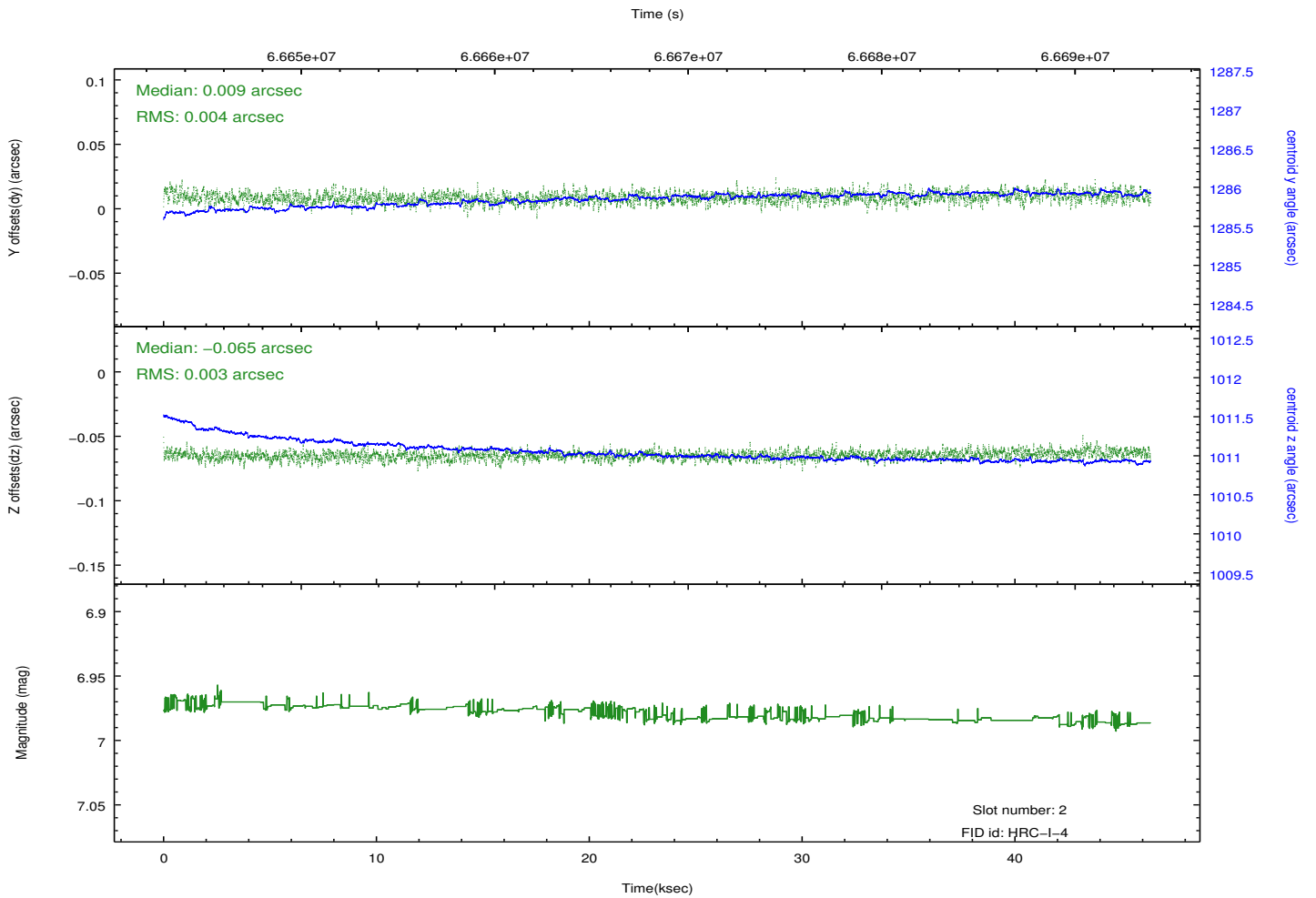
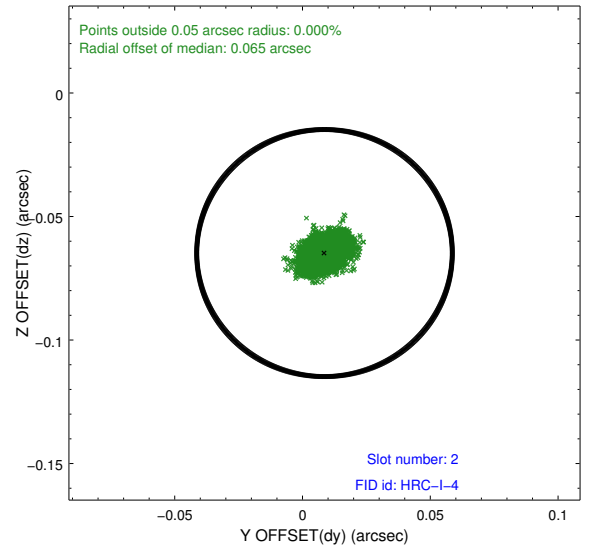
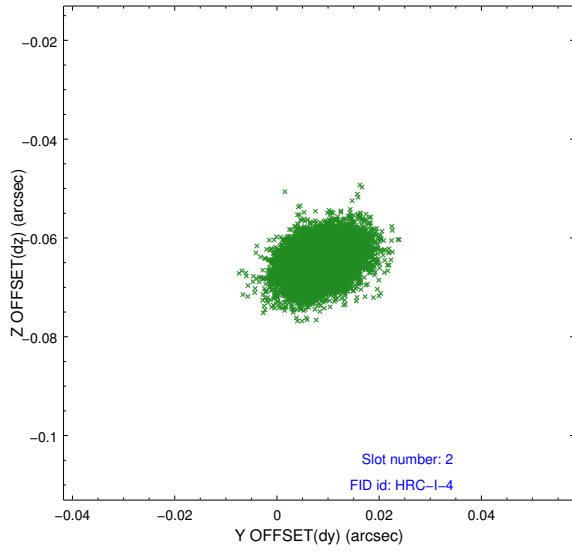
### 2.5.1 Slot 0



## 2.5.2 Slot 1



### 2.5.3 Slot 2



# A Summary

## A.1 Status

V&V Scientist	Jen Lauer
V&V Date (YYYY-MM-DD)	2012.08.23
V&V Edition	1
V&V Disposition and Status	OK
V&V Charge Time	46.157

## A.2 Comments

Charge time for this ObsId remains at previous value of 46.157 ks although with the current processing the charge time would have been 46.27 ksec.