

V&V Reference Report

L2 ASCDS Version : 8.4.4

Observation 7576 - L2 Version 3
Chandra X-Ray Center

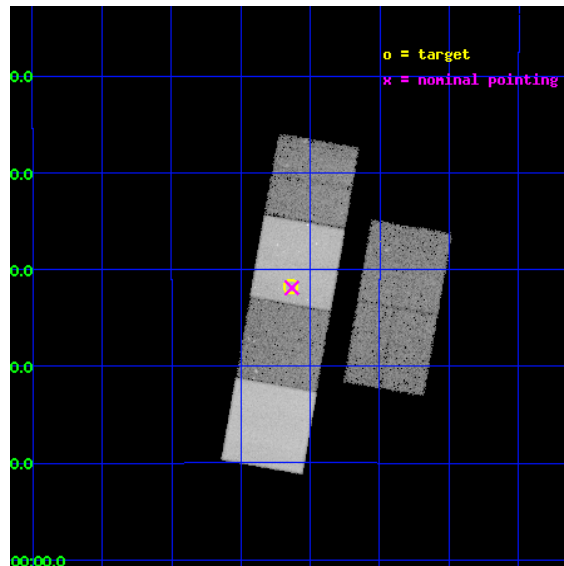
L2 Processing Date : Apr 19 2012

Contents

1	Front	2
2	OBI	3
2.1	OBI	3
2.1.1	Images	3
2.1.2	Bias	3
2.1.3	Parameters	4
2.1.4	Events	4
2.2	Compared Parameters	5
2.3	Aspect	6
2.4	Star Slots	9
2.4.1	Slot 3	9
2.4.2	Slot 4	10
2.4.3	Slot 5	11
2.4.4	Slot 6	12
2.4.5	Slot 7	13
2.5	FID Slots	14
2.5.1	Slot 0	14
2.5.2	Slot 1	15
2.5.3	Slot 2	16
A	Summary	17
A.1	Status	17
A.2	Comments	17

1 Front

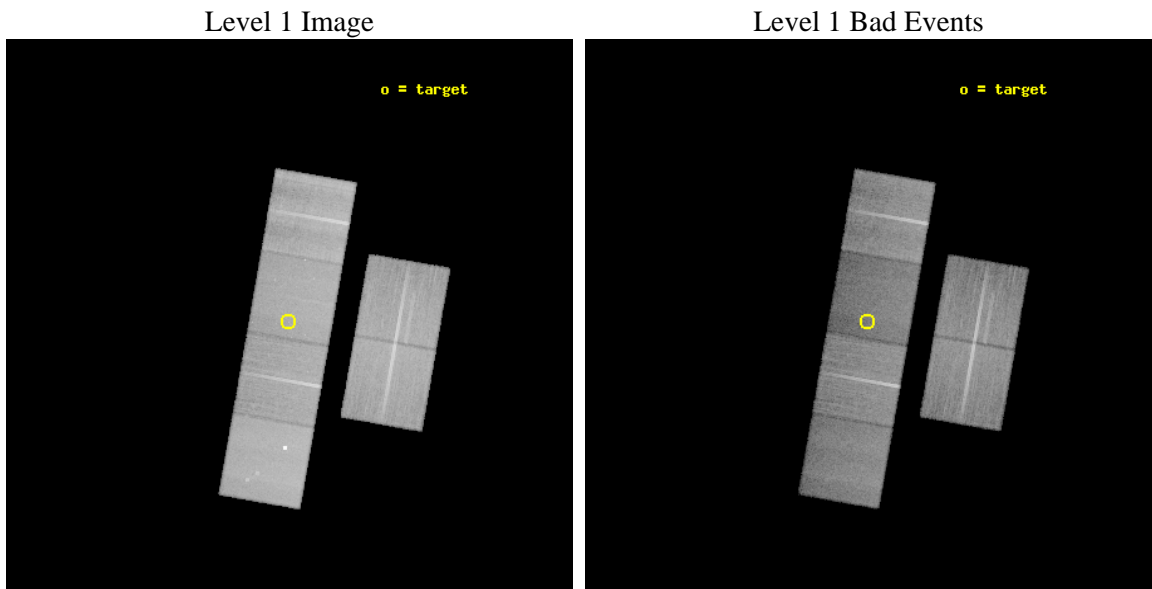
seq_num	500708	Sequence number
obs_id	7576	Observation id
title	The very old nearby pulsar J0108-1431	Proposal title
observer	Professor Gordon Garmire	Principal investigator
object	PSR J0108-1431	Source name
dtcycle	0	
cycle	P	events from which exps? Prim/Second/Both
ra_targ	17.034583	Observer's specified target RA [deg]
dec_targ	-14.530139	Observer's specified target Dec [deg]
ra_nom	17.03318886846	Nominal RA [deg]
dec_nom	-14.531738604537	Nominal Dec [deg]
roll_nom	279.99521668321	Nominal Roll [deg]
revision	3	Processing version of data
ontime	30089.599887967	Sum of GTIs [s]
livetime	29708.587256404	Livetime [s]
ontime2	30086.358917654	Sum of GTIs [s]
ontime3	30089.599887967	Sum of GTIs [s]
ontime5	30089.599887967	Sum of GTIs [s]
ontime6	30086.358897746	Sum of GTIs [s]
ontime7	30089.599887967	Sum of GTIs [s]
ontime8	30089.599887967	Sum of GTIs [s]
l2events	323337	Number of level 2 events



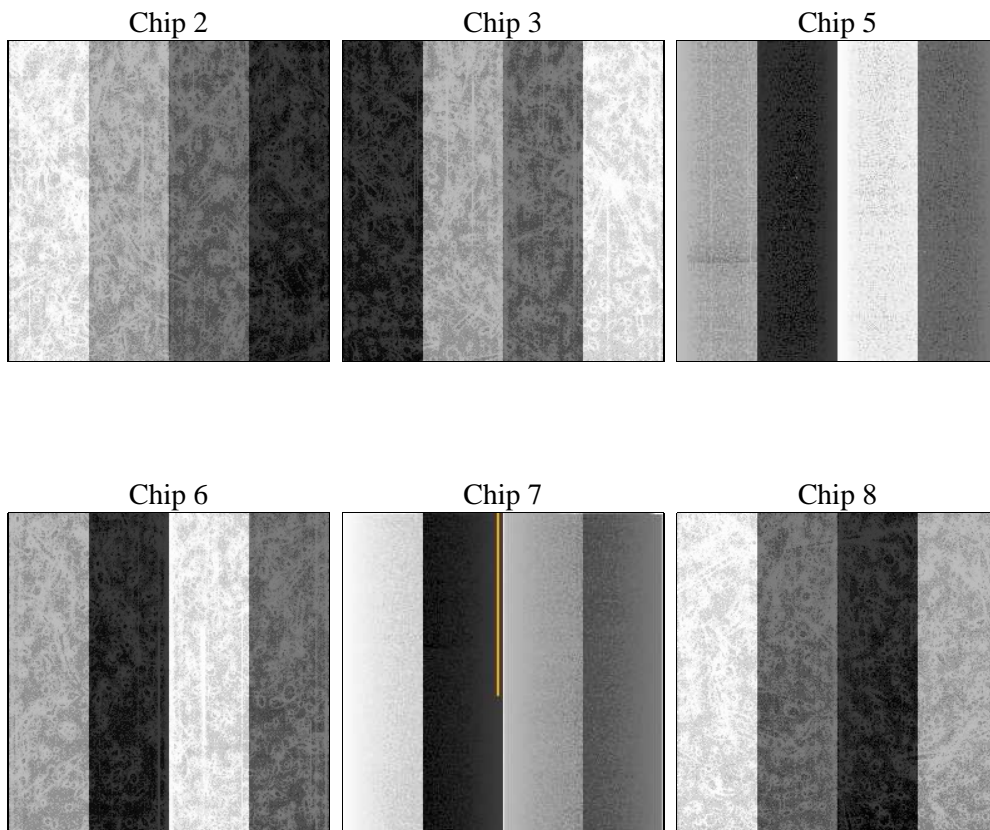
2 OBI

2.1 OBI

2.1.1 Images



2.1.2 Bias



2.1.3 Parameters

obi_num	0	Obi number	sched_exp_time	30000.000000	[s] Scheduled observation exposure time
ascdsver	8.4.4	Processing system revision	ontime	30089.599887967	Sum of GTIs [s]
caldbver	4.4.9	 	ontime2	30086.358917654	Sum of GTIs [s]
date	2012-04-19T15:13:25	Date and time of file creation	ontime3	30089.599887967	Sum of GTIs [s]
revision	3	Processing version of data	ontime5	30089.599887967	Sum of GTIs [s]
			ontime6	30086.358897746	Sum of GTIs [s]
			ontime7	30089.599887967	Sum of GTIs [s]
			ontime8	30089.599887967	Sum of GTIs [s]
			l1events	1501810	Number of level 1 events

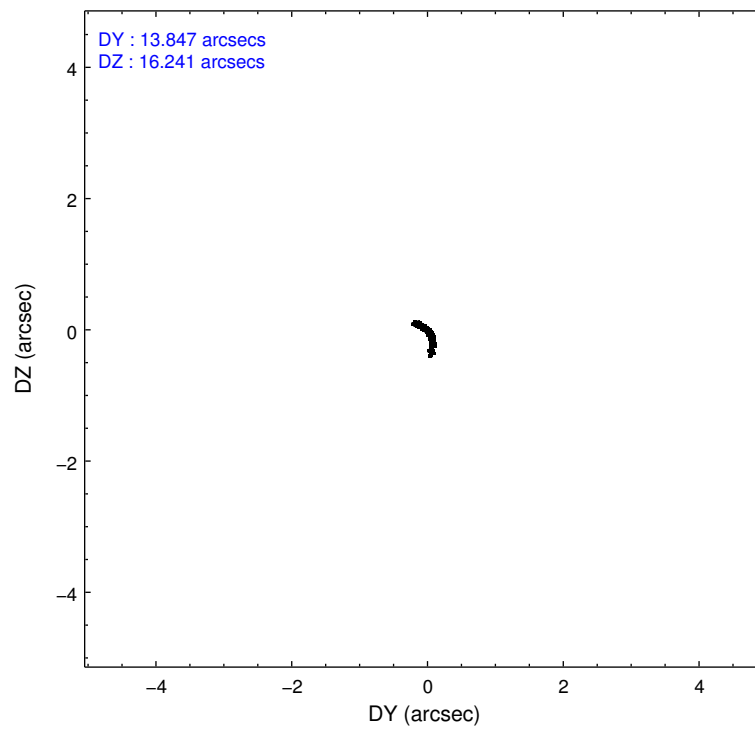
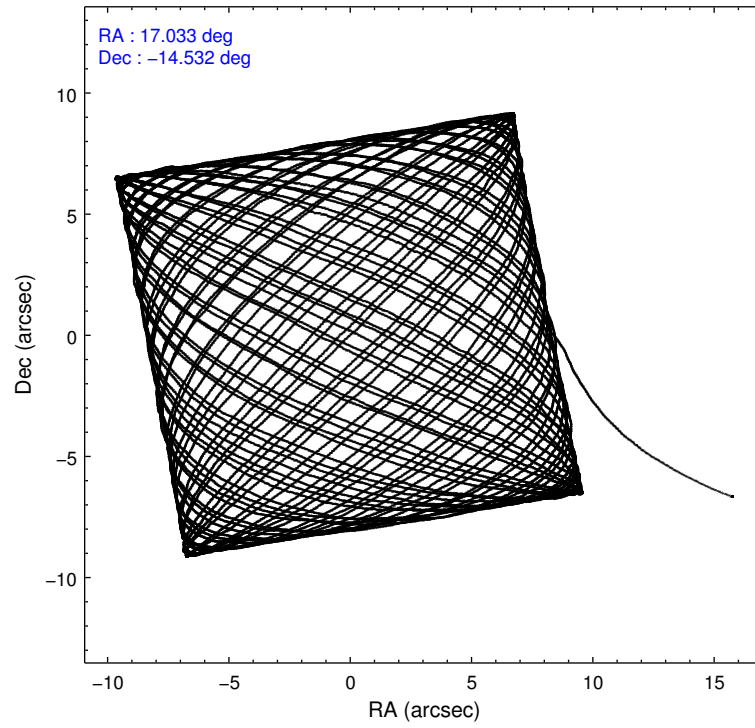
2.1.4 Events

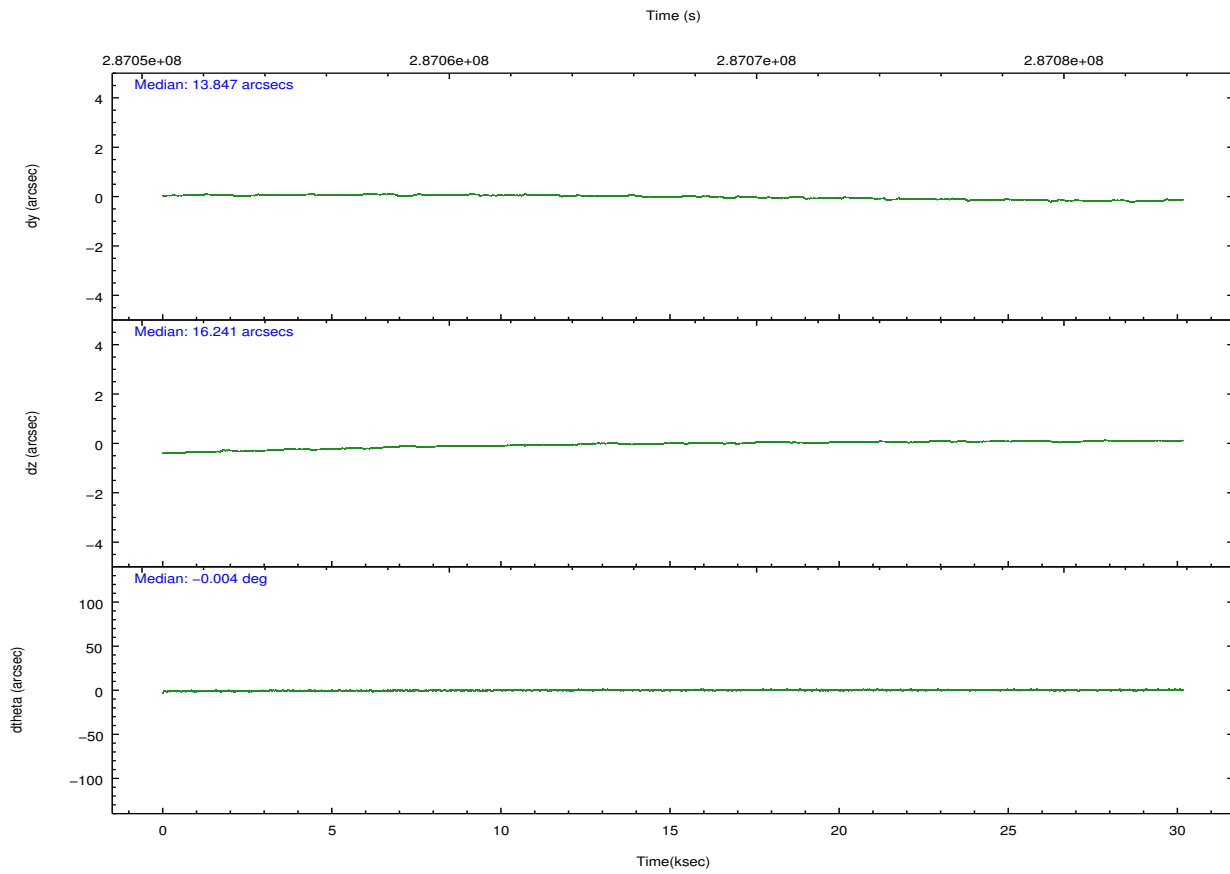
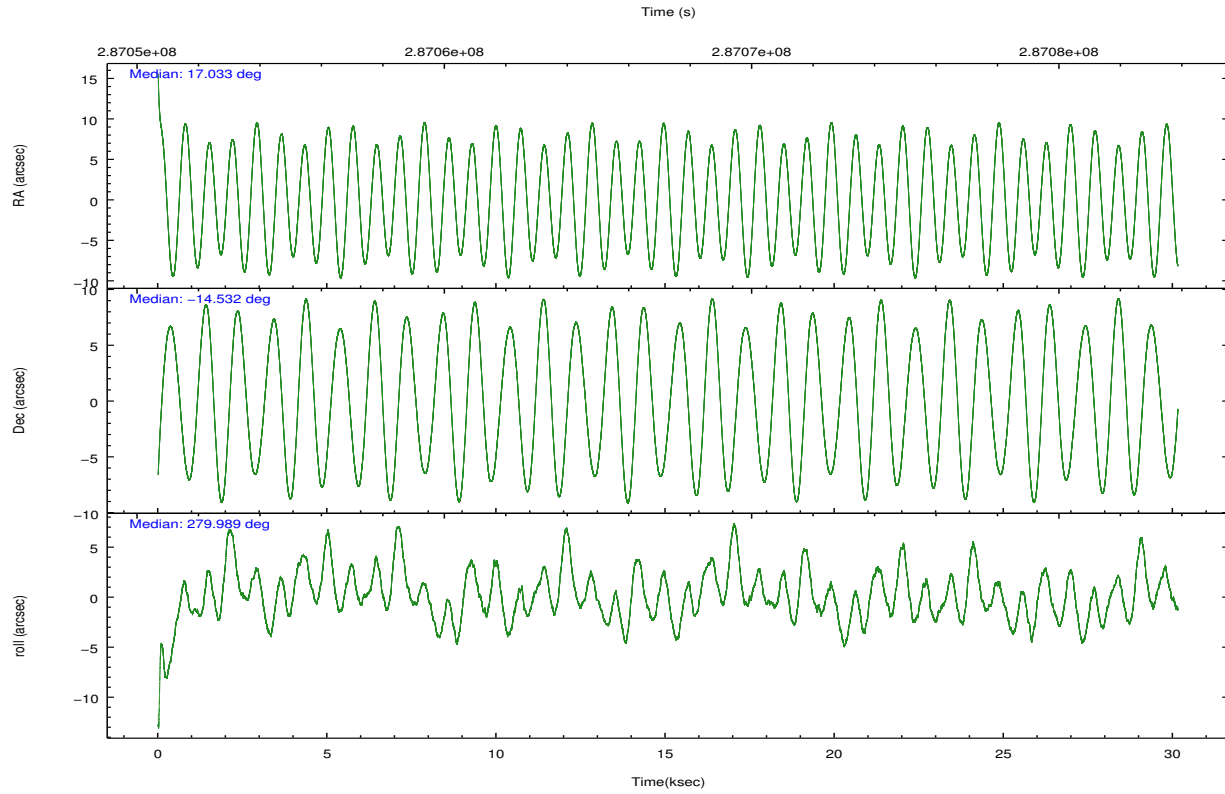
	ccd 2	ccd 3	ccd 5	ccd 6	ccd 7	ccd 8		ccd 2	ccd 3	ccd 5	ccd 6	ccd 7	ccd 8
level 1 events	239635	219234	301390	224280	239461	277810	grade 0 events	7529	7078	16376	8103	9821	17941
rejected events	218062	199070	149789	200953	128078	212250		3%	3%	5%	3%	4%	6%
rejected %	90%	90%	49%	89%	53%	76%	grade 1 events	123	112	367	107	180	201
								0%	0%	0%	0%	0%	0%
							grade 2 events	5327	4432	44555	5098	22939	15241
								2%	2%	14%	2%	9%	5%
							grade 3 events	2357	2318	6419	2508	10637	7399
								0%	1%	2%	1%	4%	2%
							grade 4 events	2321	2297	6168	2497	10423	6978
								0%	1%	2%	1%	4%	2%
							grade 5 events	7217	8517	23849	8620	25667	12663
								3%	3%	7%	3%	10%	4%
							grade 6 events	4043	4046	78109	5126	57596	18019
								1%	1%	25%	2%	24%	6%
							grade 7 events	210718	190434	125547	192221	102198	199368
								87%	86%	41%	85%	42%	71%

2.2 Compared Parameters

Parameter	Planned	Actual	Parameter	Planned	Actual
Instrument	ACIS	ACIS	Obspar format version number	7	7
Detector	ACIS-235678	ACIS-235678	Obspar file type	PREDICTED	ACTUAL
Grating	NONE	NONE	Obspar update status	NONE	UPDATED
Data mode	VFAINT	VFAINT	CCD I0 on	N	N
Observation mode	POINTING	POINTING	CCD I1 on	N	N
[deg] Pointing RA	17.014738	17.03318886845972	CCD I2 on	Y	Y
[deg] Pointing Dec	-14.511026	-14.53173860453659	CCD I3 on	Y	Y
[deg] Pointing Roll	279.833971	279.9952166832148	CCD S0 on	N	N
[mm] SIM focus pos	-0.684267	-0.6828225247311905	CCD S1 on	O2	Y
[mm] SIM defocus	0	0.001444936568705701	CCD S2 on	Y	Y
[mm] SIM translation stage pos	-190.132523	-190.1425803651734	CCD S3 on	Y	Y
[mm] SIM translation stage offset	0	0.01005778216563158	CCD S4 on	O1	Y
[s] Observation start time (MET)	287052357.184000	287051326.69988	CCD S5 on	N	N
Observation start date	2007-02-05T08:44:52	2007-02-05T08:28:46	Number of optional ACIS chips dropped	0	0
[s] Observation end time (MET)	287082357.184000	287083244.17639	On-chip summing requested	N	N
Observation end date	2007-02-05T17:04:52	2007-02-05T17:20:44	Subarray requested	NONE	NONE
Read mode	TIMED	TIMED	Alternating exposures requested	N	N
			[s] Primary exposure time	0.000000	3.2

2.3 Aspect



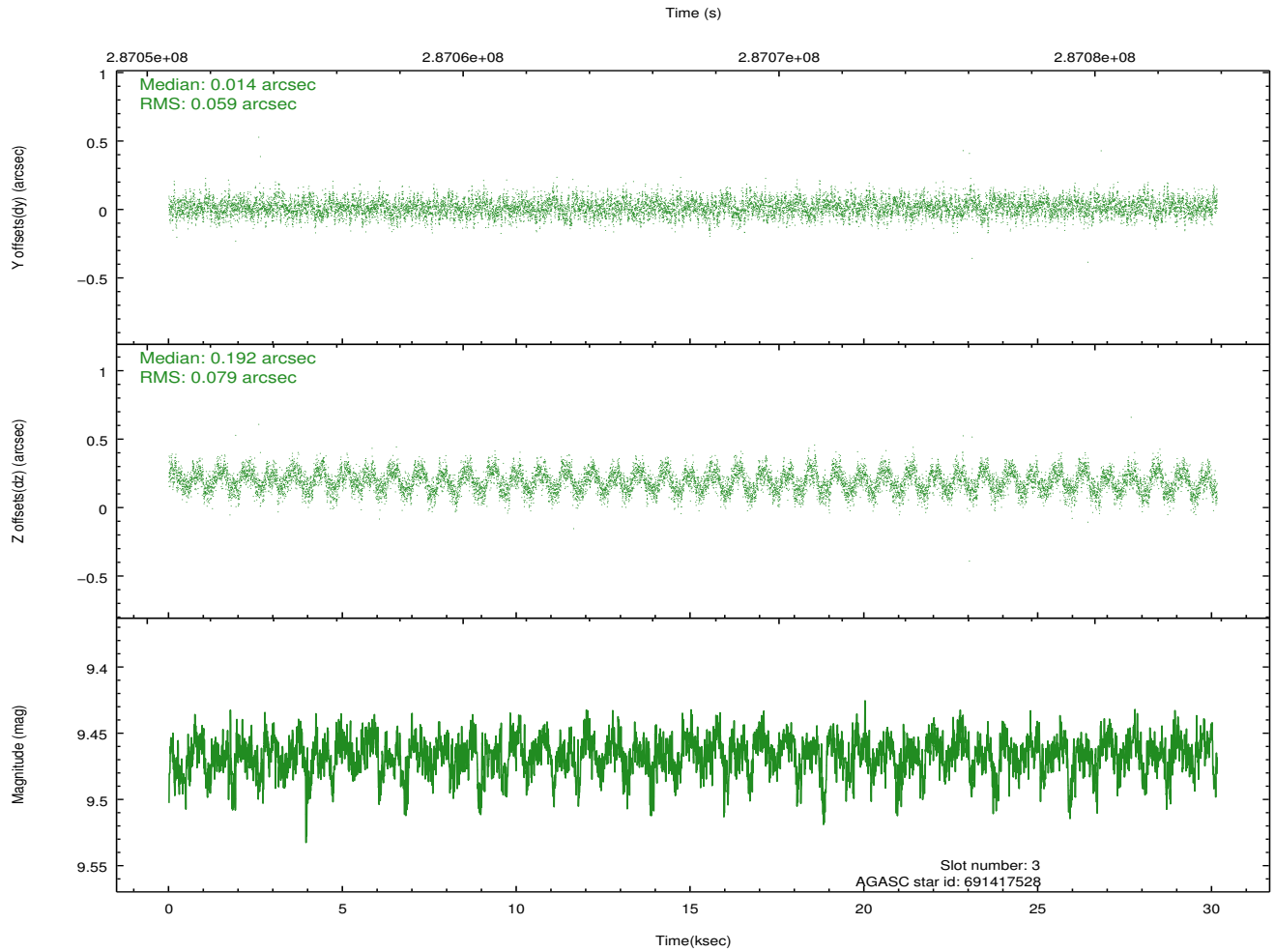
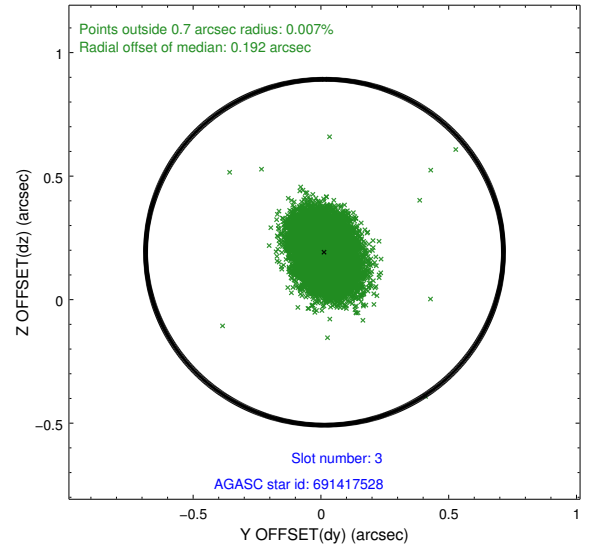
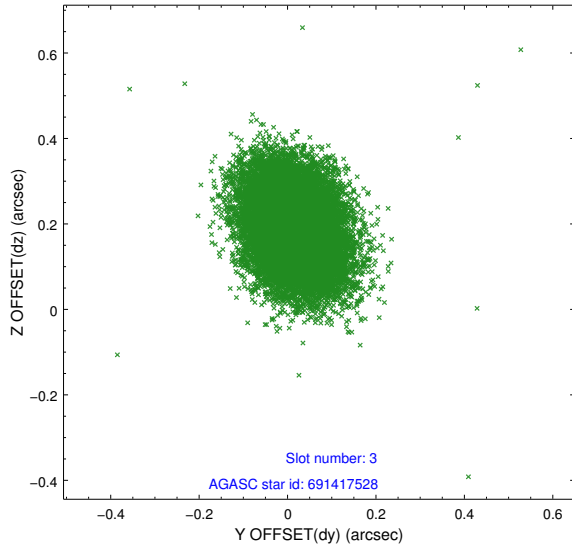


Slot Statistics

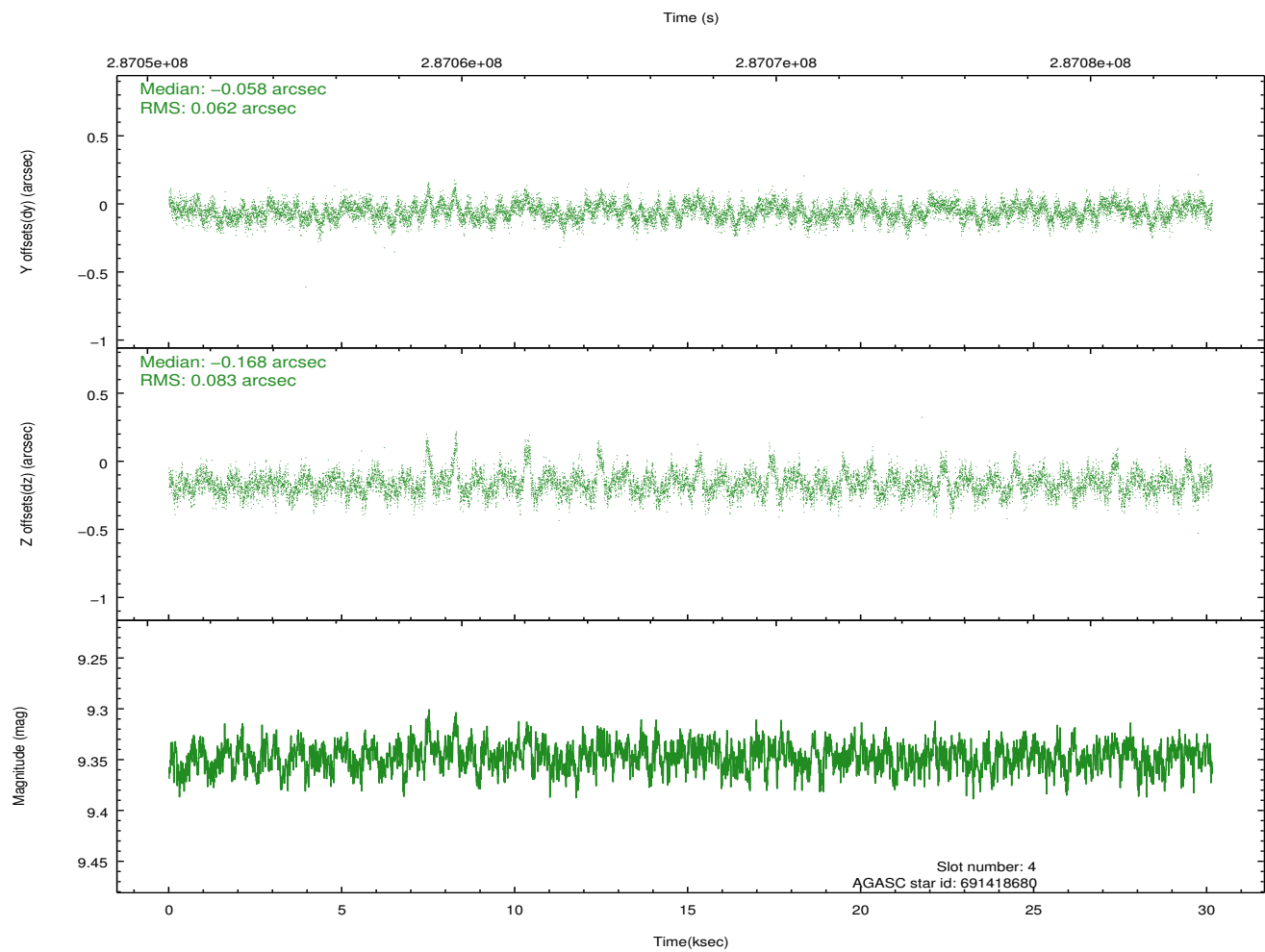
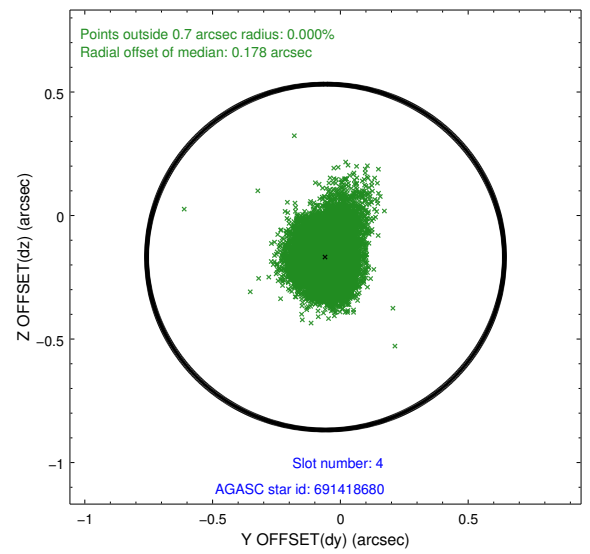
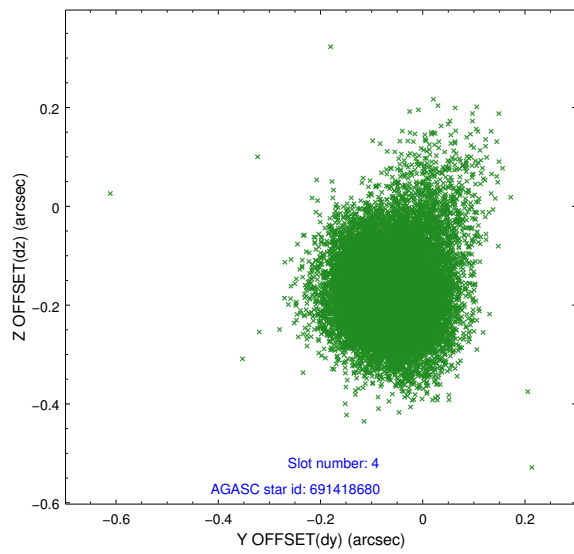
slot	status	id	mag	n_pts	med_dy	med_dz	dr1	dr2	ra	dec	mean_y	mean_z
0	FID	ACIS-S-2	7.09	7354	-0.056	-0.035	0.010	0.015	0.000000	0.000000	-766.82	-1737.59
1	FID	ACIS-S-4	7.20	7353	0.200	0.037	0.011	0.017	0.000000	0.000000	2146.68	170.89
2	FID	ACIS-S-5	7.22	7354	-0.175	0.007	0.007	0.012	0.000000	0.000000	-1819.69	164.61
3	GUIDE	691417528	9.47	14698	0.014	0.192	0.105	0.168	17.513310	-14.025602	-1422.46	2014.25
4	GUIDE	691418680	9.35	14688	-0.058	-0.168	0.106	0.180	16.608980	-14.296414	-1000.65	-1262.25
5	GUIDE	691419920	9.55	14621	-0.055	-0.154	0.119	0.188	16.446479	-14.884677	990.80	-2177.88
6	GUIDE	691421208	9.20	14568	-0.030	-0.086	0.101	0.163	16.407124	-14.518195	-332.90	-2091.39
7	GUIDE	766920088	8.80	14697	0.132	0.210	0.071	0.116	17.103587	-15.178123	2419.55	-105.42

2.4 Star Slots

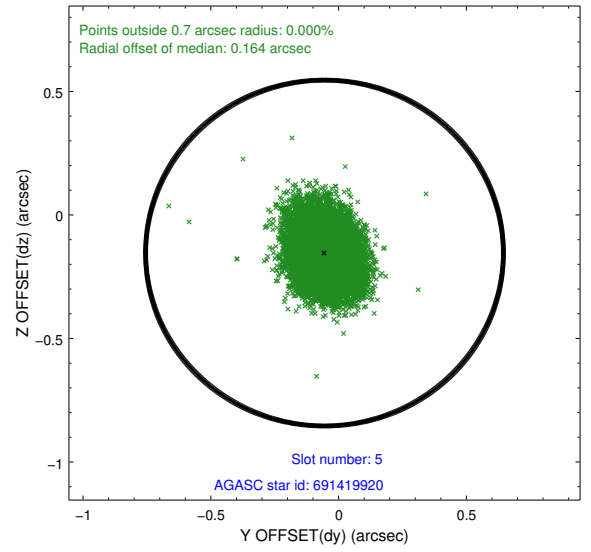
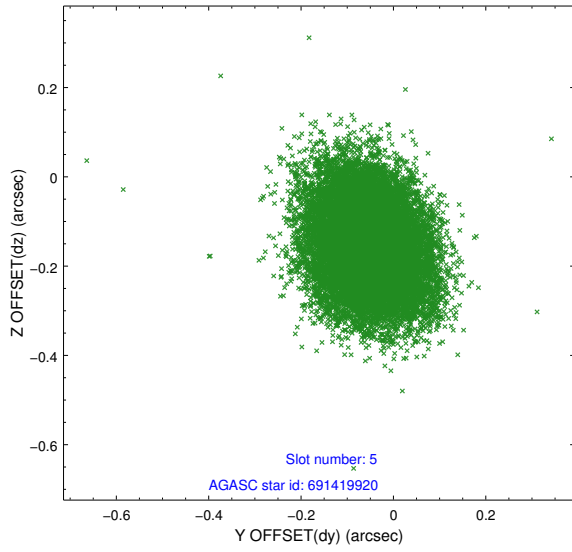
2.4.1 Slot 3



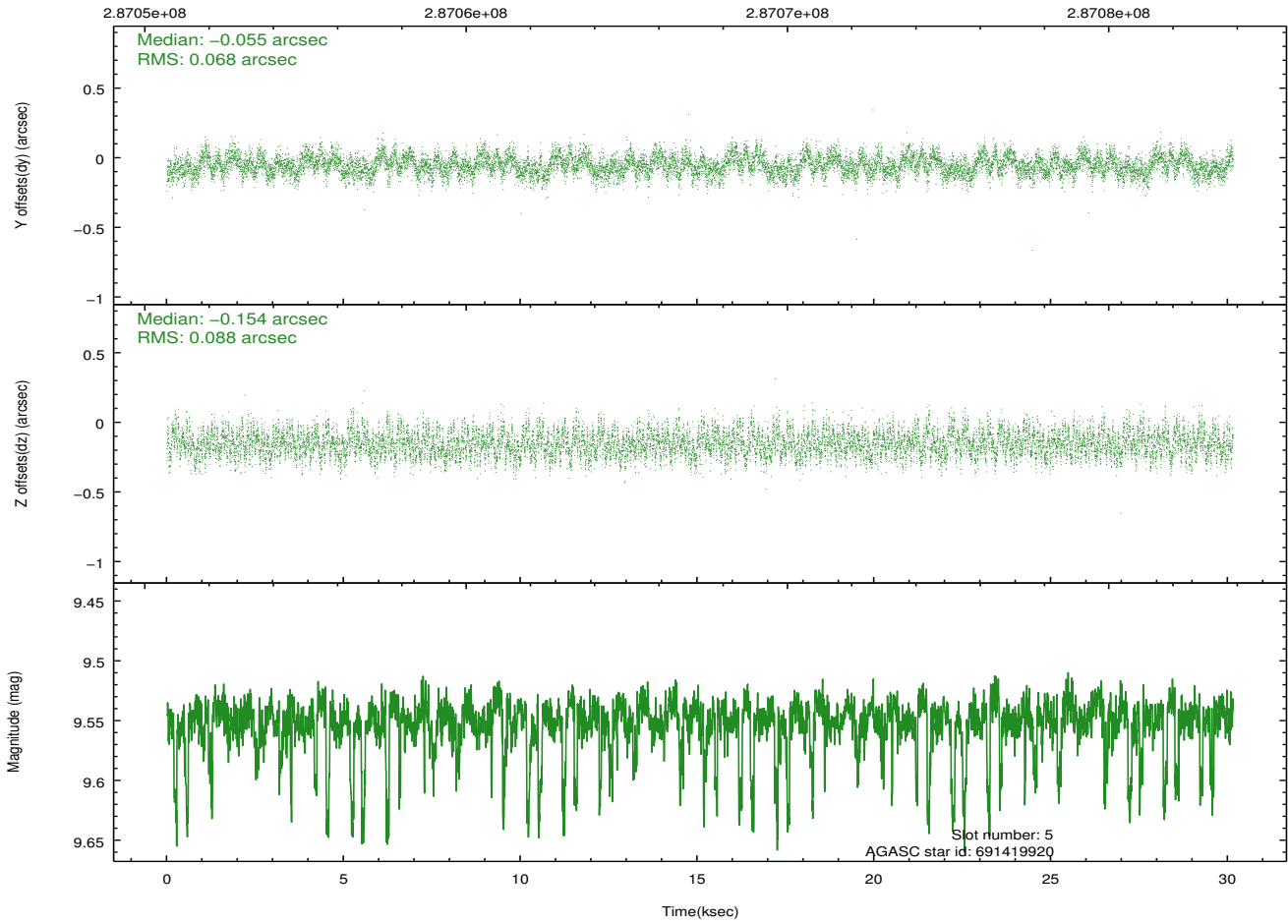
2.4.2 Slot 4



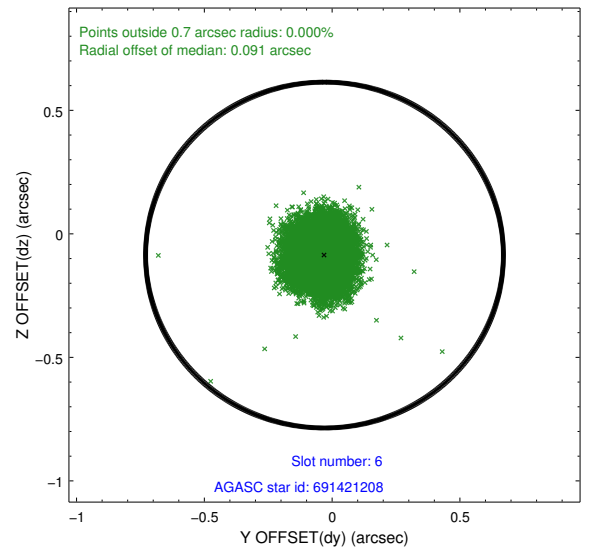
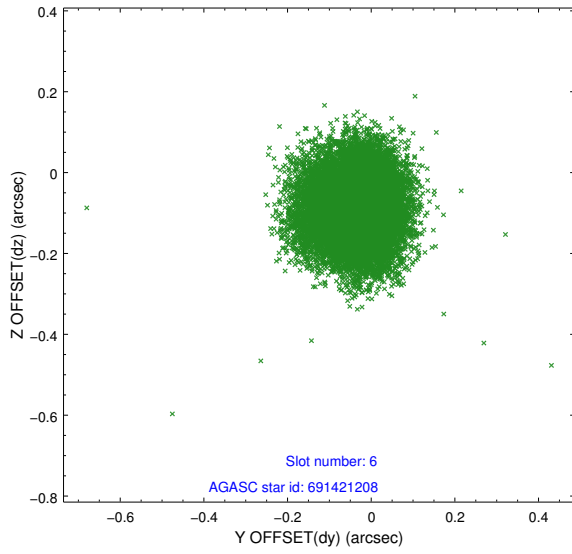
2.4.3 Slot 5



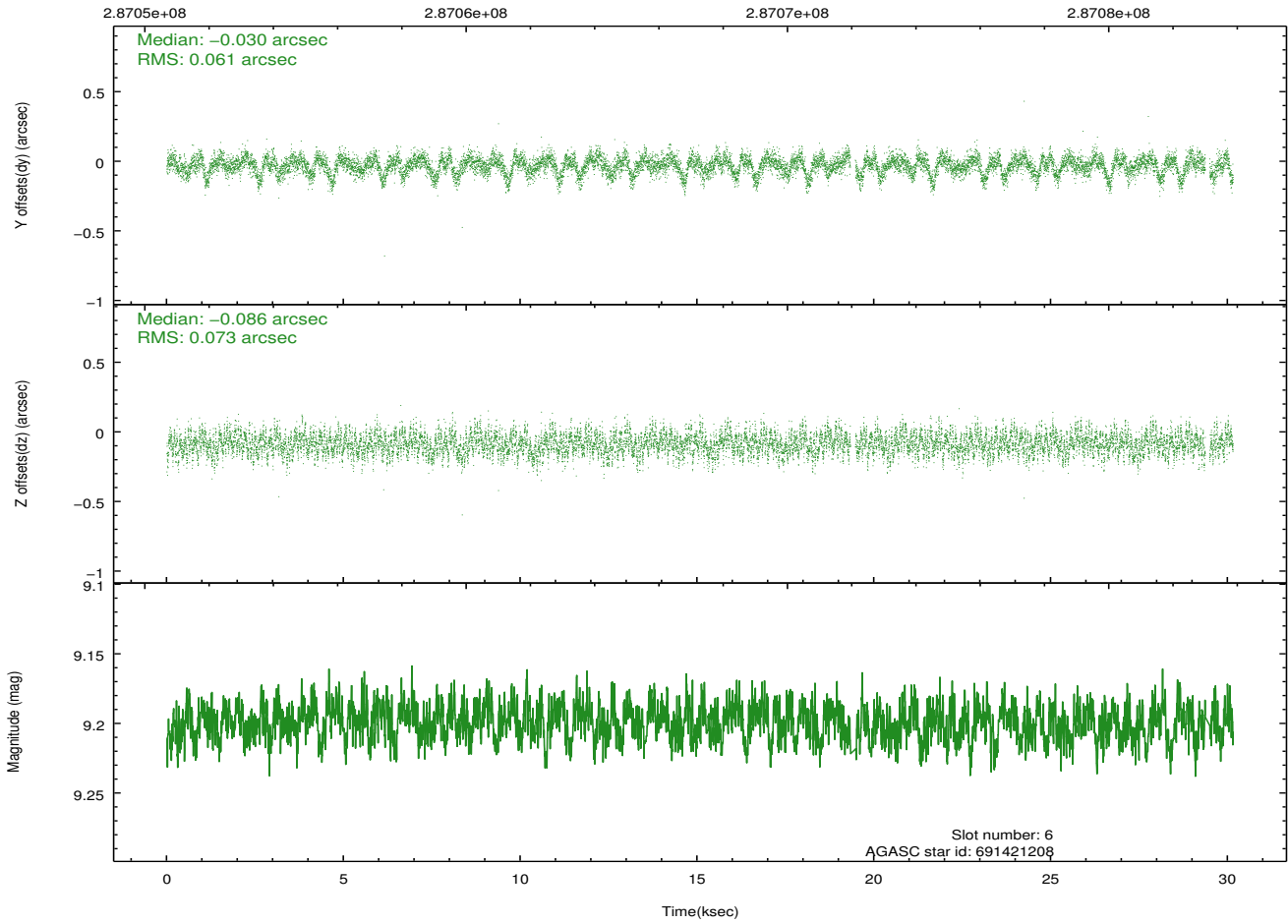
Time (s)



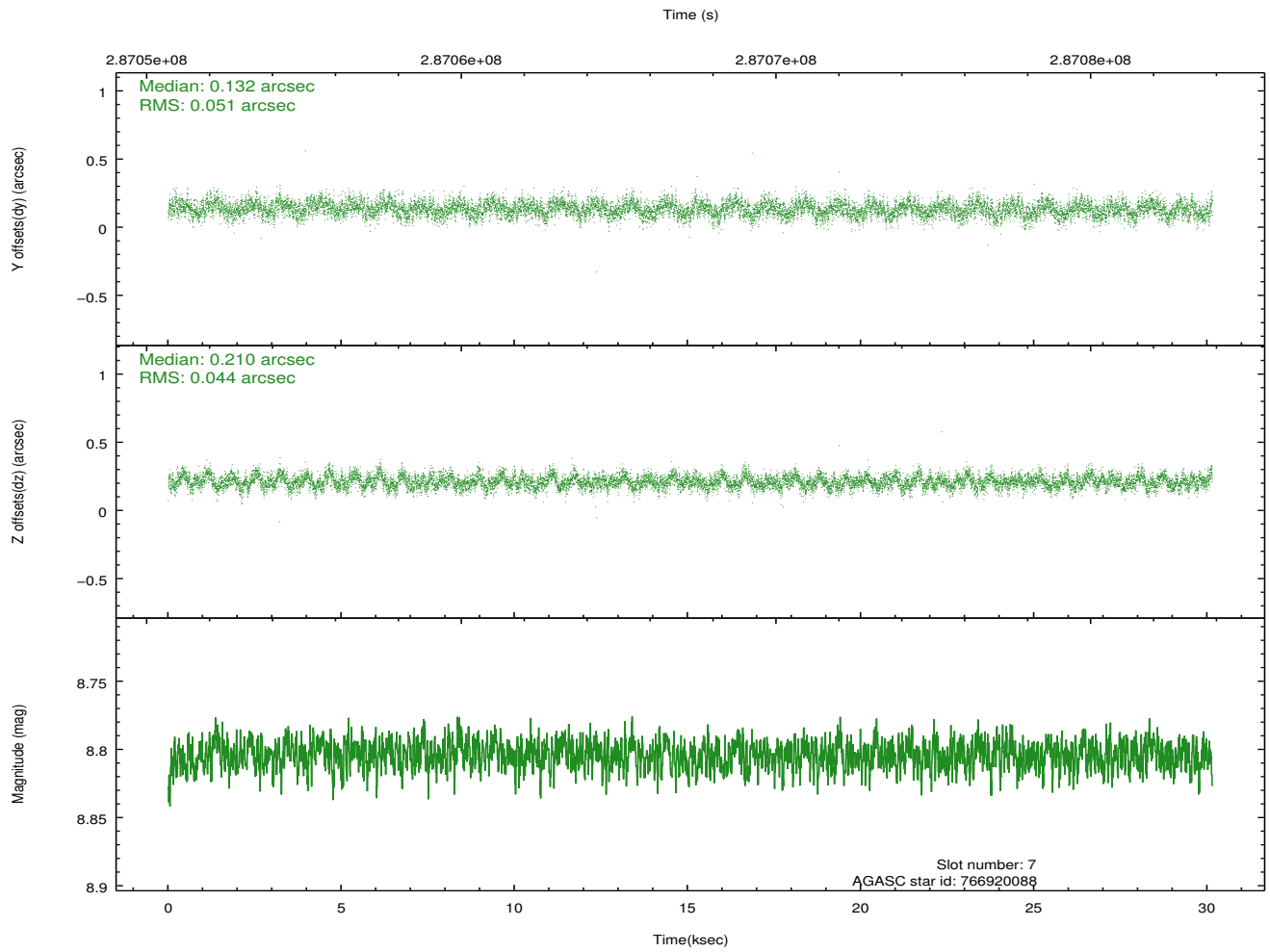
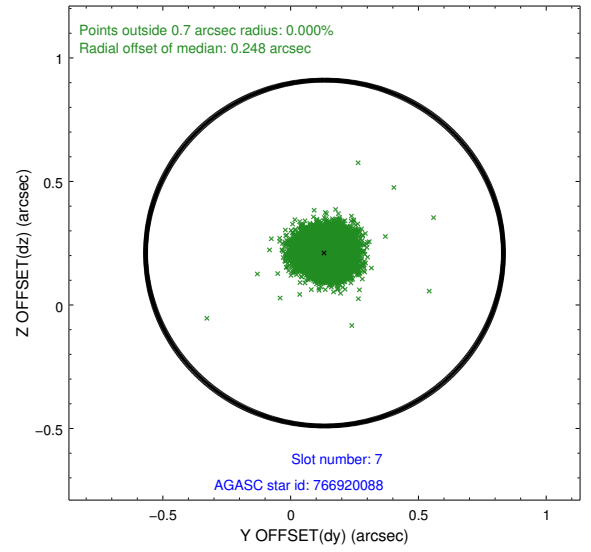
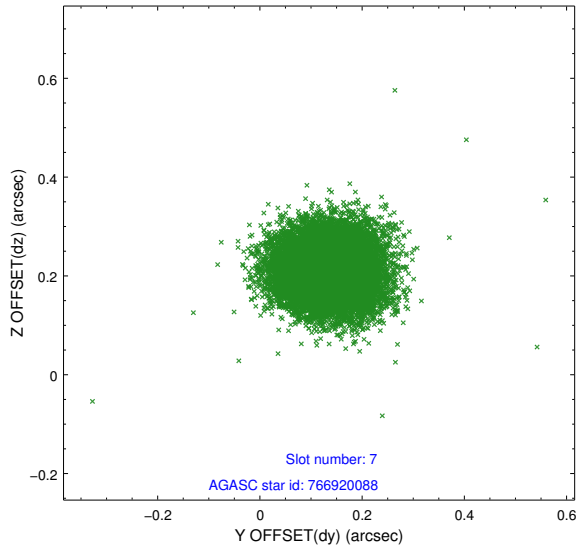
2.4.4 Slot 6



Time (s)

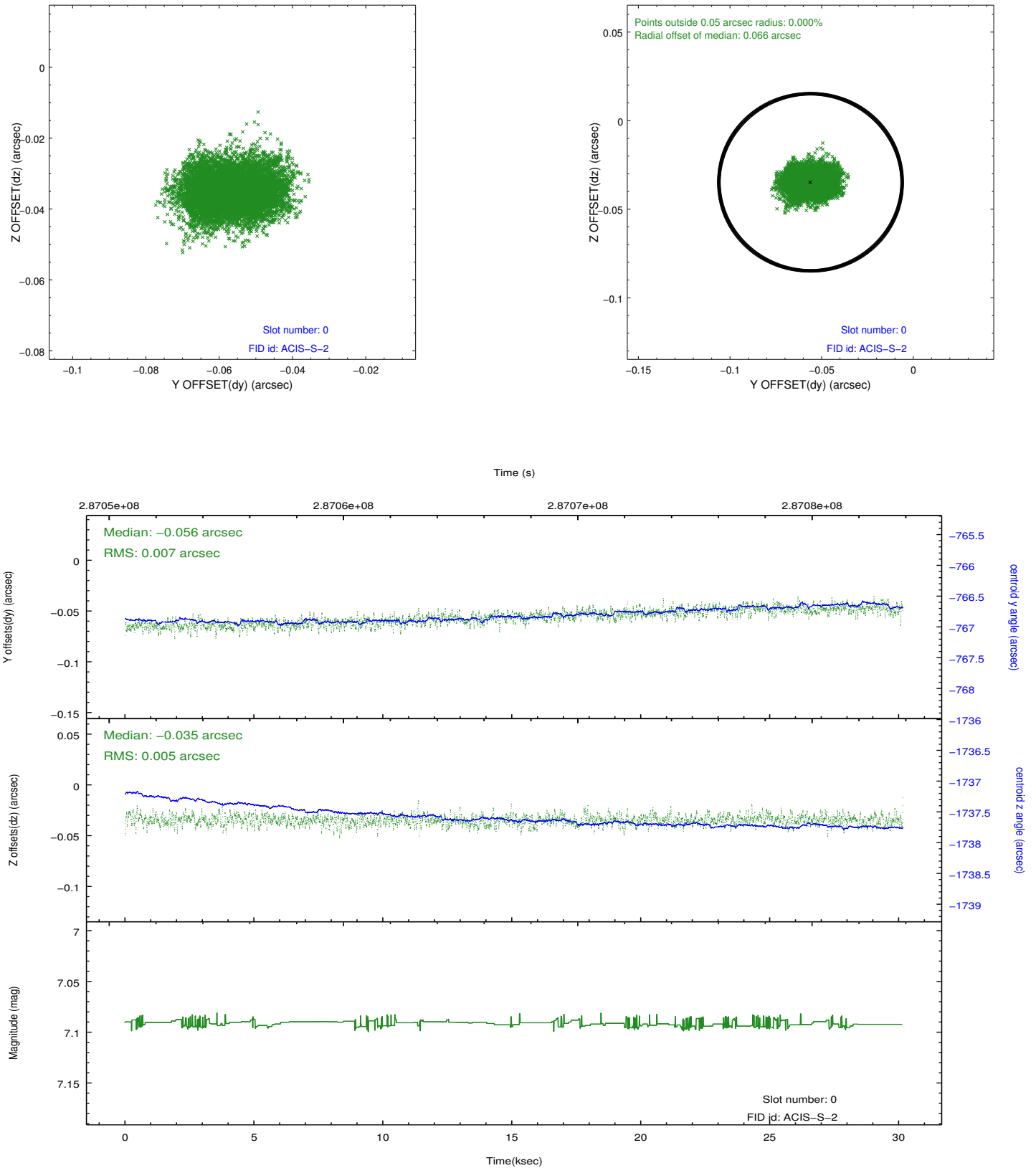


2.4.5 Slot 7

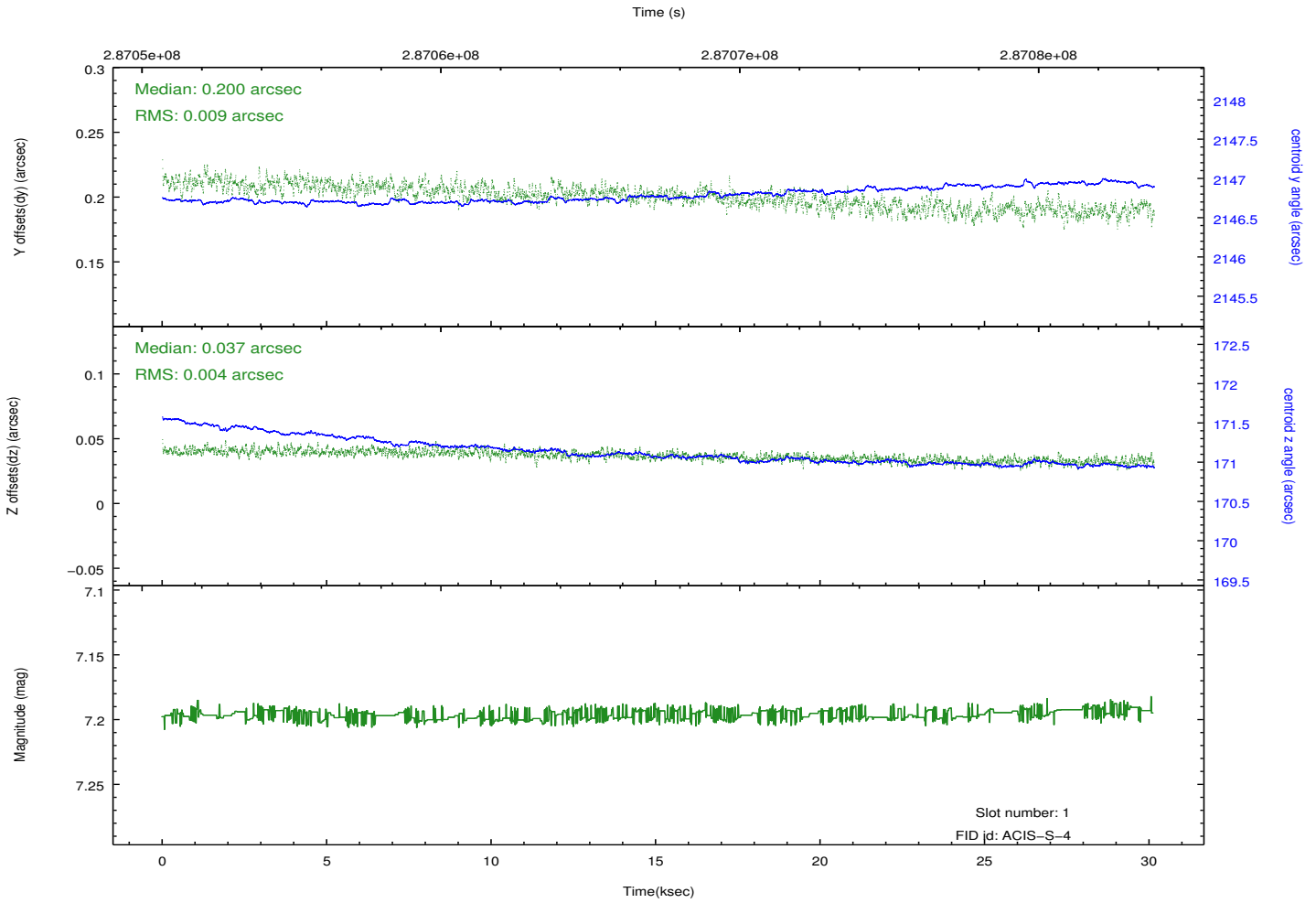
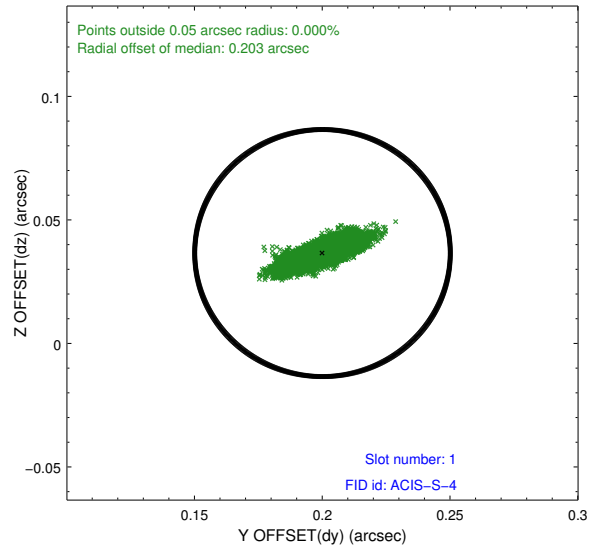
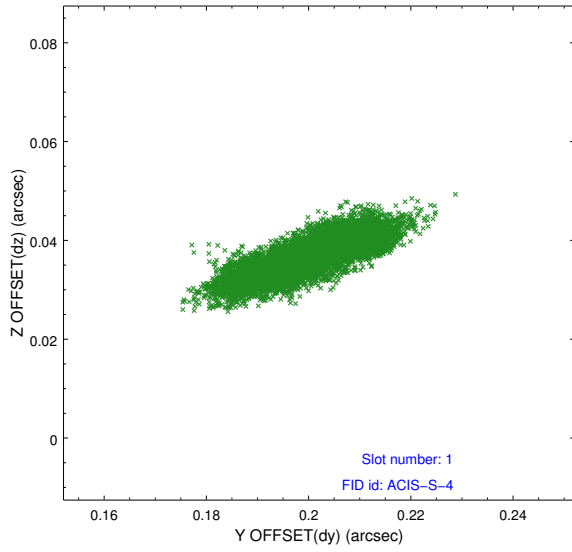


2.5 FID Slots

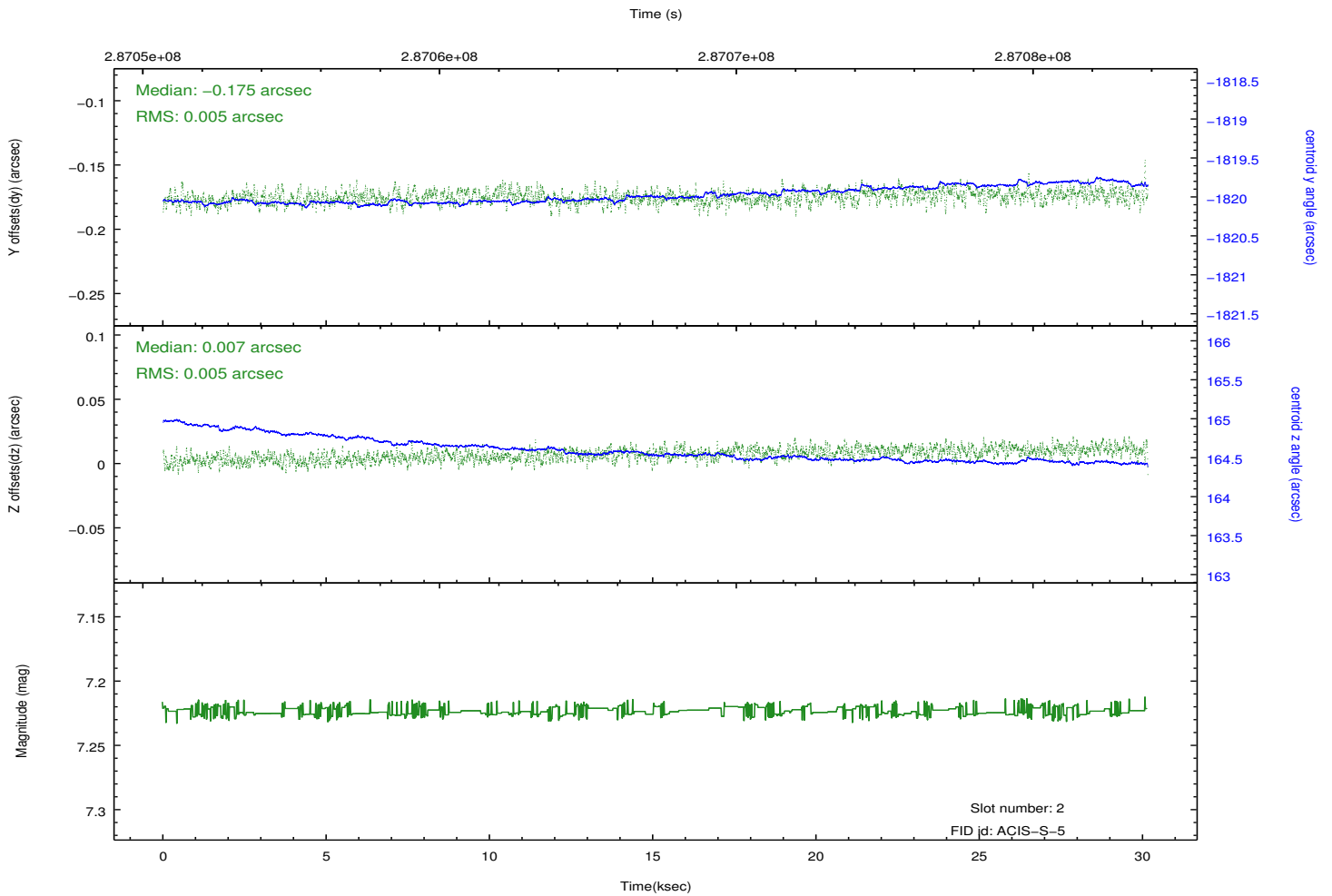
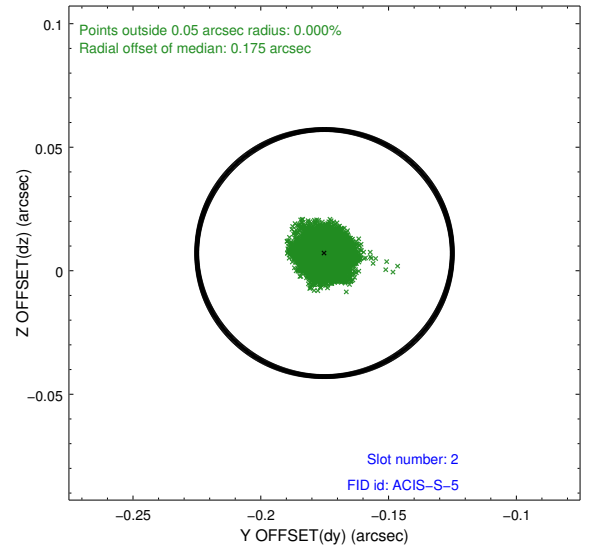
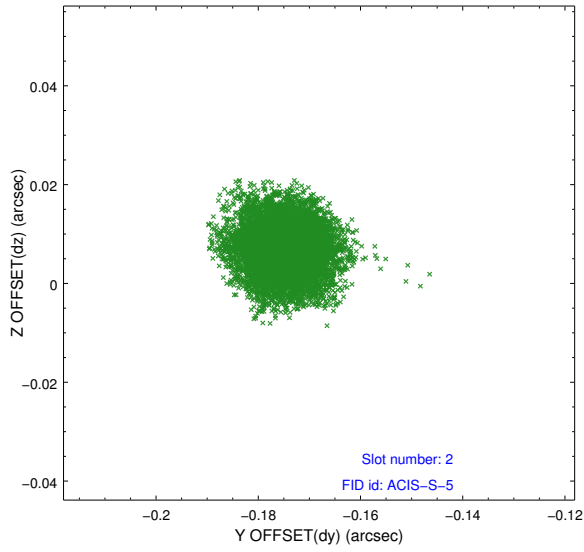
2.5.1 Slot 0



2.5.2 Slot 1



2.5.3 Slot 2



A Summary

A.1 Status

V&V Scientist	Beth Sundheim
V&V Date (YYYY-MM-DD)	2012.04.20
V&V Edition	1
V&V Disposition and Status	OK
V&V Charge Time	30.0895998

A.2 Comments