

V&V Reference Report

L2 ASCDS Version : 8.4.4

Observation 7756 - L2 Version 3
Chandra X-Ray Center

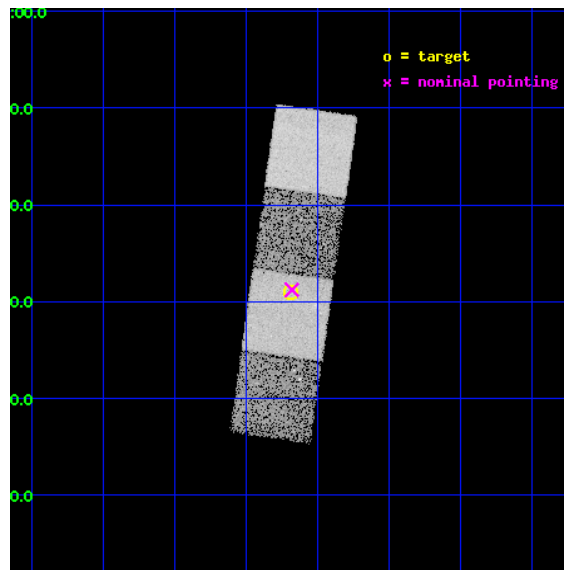
L2 Processing Date : Apr 22 2012

Contents

1	Front	2
2	OBI	3
2.1	OBI	3
2.1.1	Images	3
2.1.2	Bias	3
2.1.3	Parameters	4
2.1.4	Events	4
2.2	Compared Parameters	5
2.3	Aspect	6
2.4	Star Slots	9
2.4.1	Slot 3	9
2.4.2	Slot 4	10
2.4.3	Slot 5	11
2.4.4	Slot 6	12
2.4.5	Slot 7	13
2.5	FID Slots	14
2.5.1	Slot 0	14
2.5.2	Slot 1	15
2.5.3	Slot 2	16
A	Summary	17
A.1	Status	17
A.2	Comments	17

1 Front

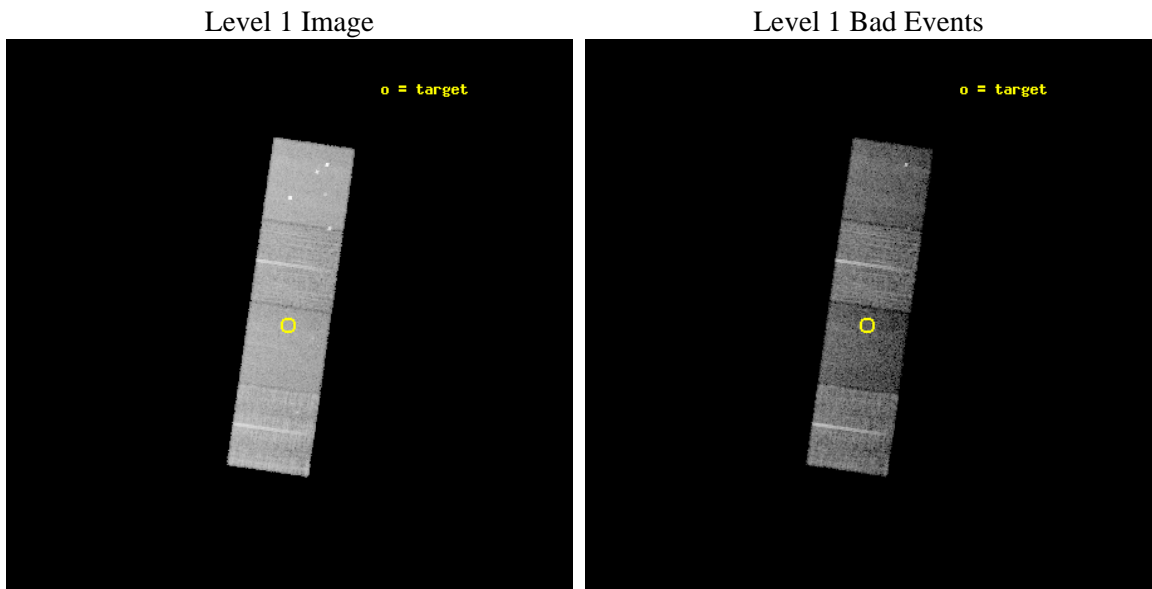
seq_num	701424	Sequence number
obs_id	7756	Observation id
title	Probing heavy obscuration in optically selected Type 2 quasar candidates	Proposal title
observer	Dr Cristian Vignali	Principal investigator
object	SDSS J151711.47+033100.2	Source name
dtcycle	0	
cycle	P	events from which exps? Prim/Second/Both
ra_targ	229.297917	Observer's specified target RA [deg]
dec_targ	3.516722	Observer's specified target Dec [deg]
ra_nom	229.294779245	Nominal RA [deg]
dec_nom	3.5204594559782	Nominal Dec [deg]
roll_nom	98.224861547391	Nominal Roll [deg]
revision	3	Processing version of data
ontime	10044.000077248	Sum of GTIs [s]
livetime	9912.7678219531	Livetime [s]
ontime5	10044.000077248	Sum of GTIs [s]
ontime6	10044.000077248	Sum of GTIs [s]
ontime7	10044.000077248	Sum of GTIs [s]
ontime8	10040.859106958	Sum of GTIs [s]
l2events	92821	Number of level 2 events



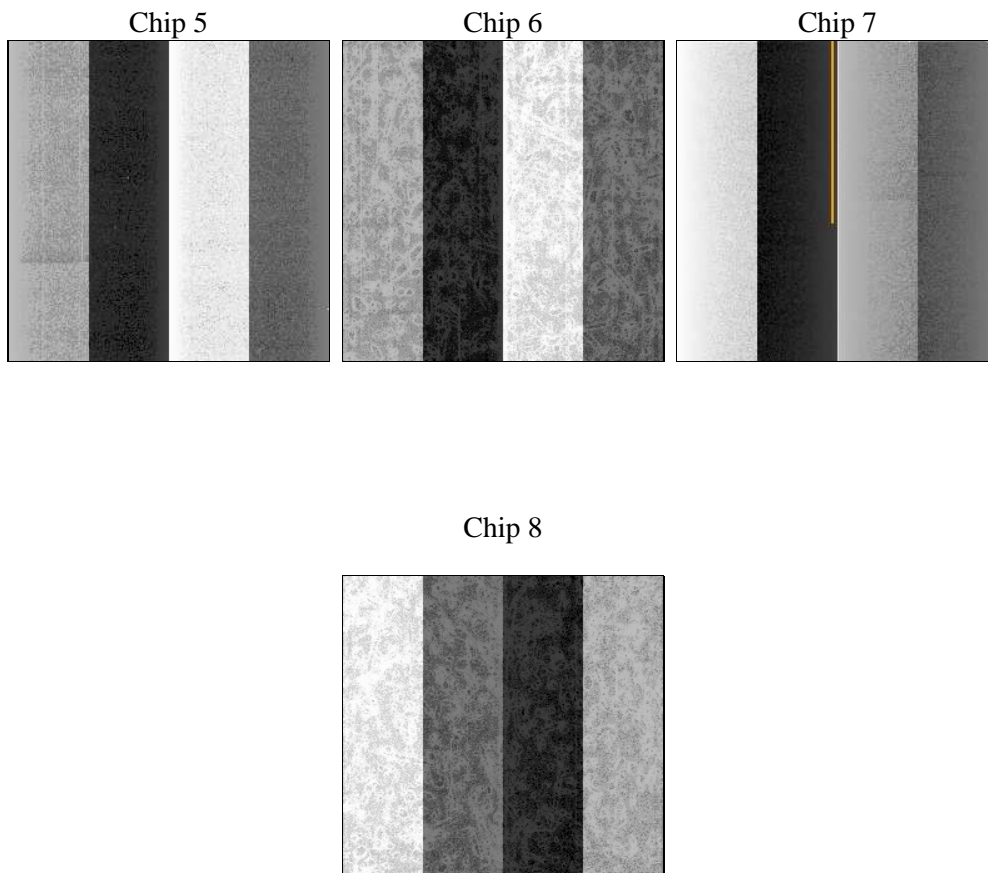
2 OBI

2.1 OBI

2.1.1 Images



2.1.2 Bias



2.1.3 Parameters

obi_num	0	Obi number	sched_exp_time	10000.000000	[s] Scheduled observation exposure time
ascdsver	8.4.4	Processing system revision	ontime	10044.000077248	Sum of GTIs [s]
caldbver	4.4.9	 	ontime5	10044.000077248	Sum of GTIs [s]
date	2012-04-22T05:40:07	Date and time of file creation	ontime6	10044.000077248	Sum of GTIs [s]
revision	3	Processing version of data	ontime7	10044.000077248	Sum of GTIs [s]
			ontime8	10040.859106958	Sum of GTIs [s]
			l1events	327747	Number of level 1 events

2.1.4 Events

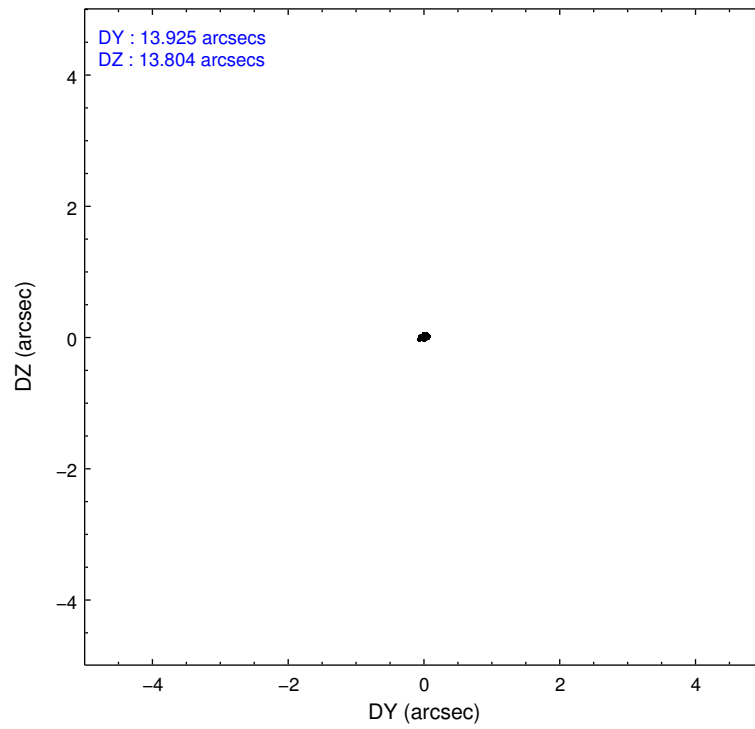
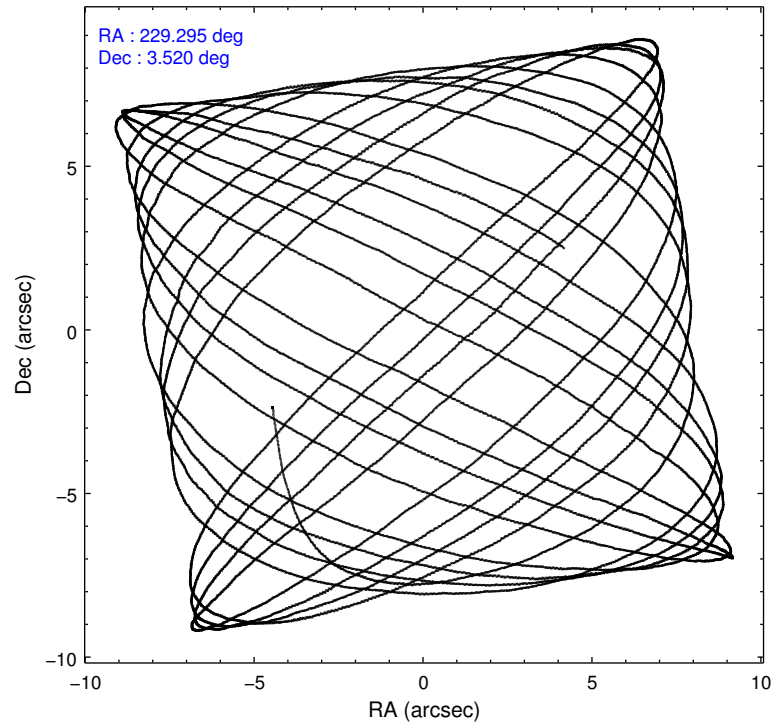
	ccd 5	ccd 6	ccd 7	ccd 8
level 1 events	94775	72870	70063	90039
rejected events	43335	65195	34993	67629
rejected %	45%	89%	49%	75%

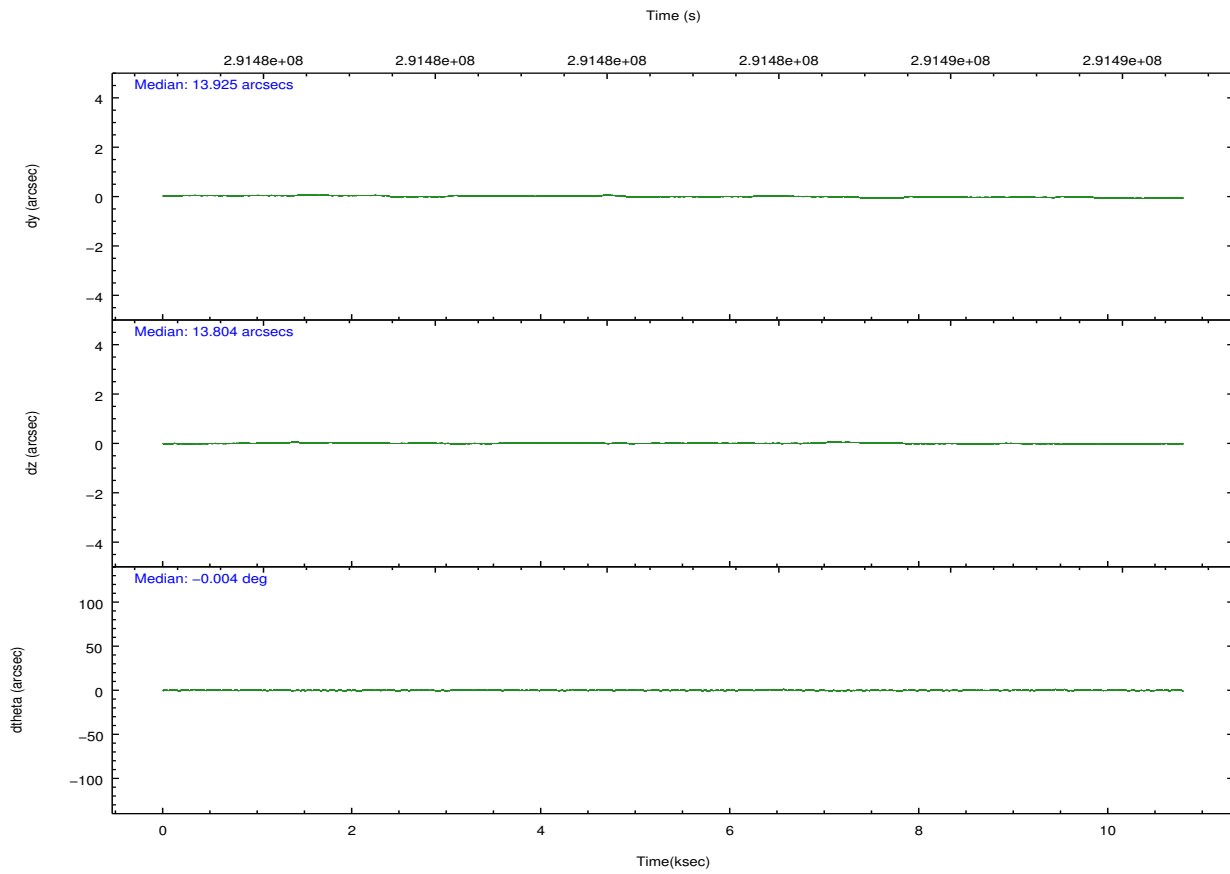
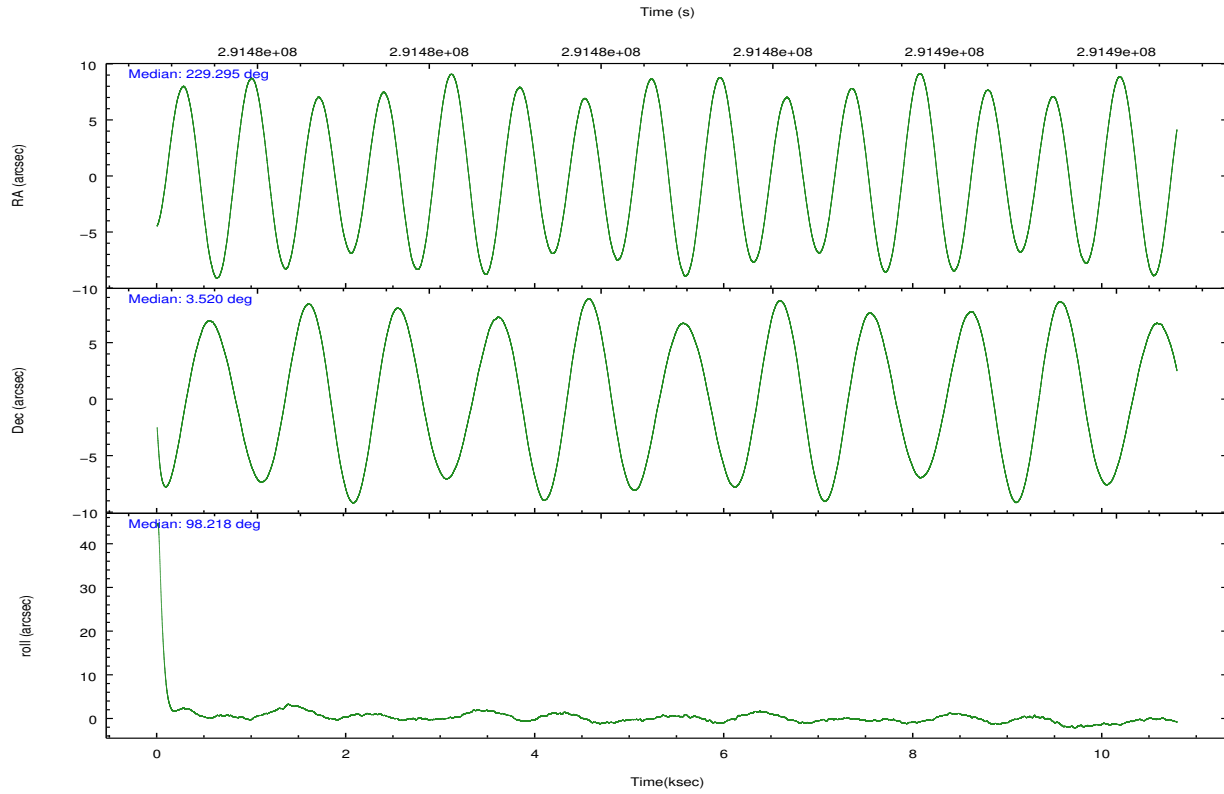
	ccd 5	ccd 6	ccd 7	ccd 8
grade 0 events	8063	2886	3815	6457
	8%	3%	5%	7%
grade 1 events	572	47	98	72
	0%	0%	0%	0%
grade 2 events	14684	1633	7293	5173
	15%	2%	10%	5%
grade 3 events	2229	860	3371	2503
	2%	1%	4%	2%
grade 4 events	2074	796	3369	2260
	2%	1%	4%	2%
grade 5 events	7399	2612	7501	3691
	7%	3%	10%	4%
grade 6 events	24403	1502	17229	6021
	25%	2%	24%	6%
grade 7 events	35351	62534	27387	63862
	37%	85%	39%	70%

2.2 Compared Parameters

Parameter	Planned	Actual	Parameter	Planned	Actual
Instrument	ACIS	ACIS	Obspar format version number	7	7
Detector	ACIS-5678	ACIS-5678	Obspar file type	PREDICTED	ACTUAL
Grating	NONE	NONE	Obspar update status	NONE	UPDATED
Data mode	VFAINT	VFAINT	Number of optional ACIS chips dropped	0	0
Observation mode	POINTING	POINTING	On-chip summing requested	N	N
[deg] Pointing RA	229.312042	229.2947792449976	Subarray requested	NONE	NONE
[deg] Pointing Dec	3.499200	3.520459455978226	Alternating exposures requested	N	N
[deg] Pointing Roll	98.067124	98.22486154739124	[s] Primary exposure time	0.000000	3.1
[mm] SIM focus pos	-0.684267	-0.6828225247311905			
[mm] SIM defocus	0	0.001444936568705701			
[mm] SIM translation stage pos	-190.132523	-190.1425803651734			
[mm] SIM translation stage offset	0	0.01005778216563158			
[s] Observation start time (MET)	291478171.184000	291477001.69779			
Observation start date	2007-03-28T14:08:26	2007-03-28T13:50:01			
[s] Observation end time (MET)	291488171.184000	291489324.76087			
Observation end date	2007-03-28T16:55:06	2007-03-28T17:15:24			
Read mode	TIMED	TIMED			

2.3 Aspect



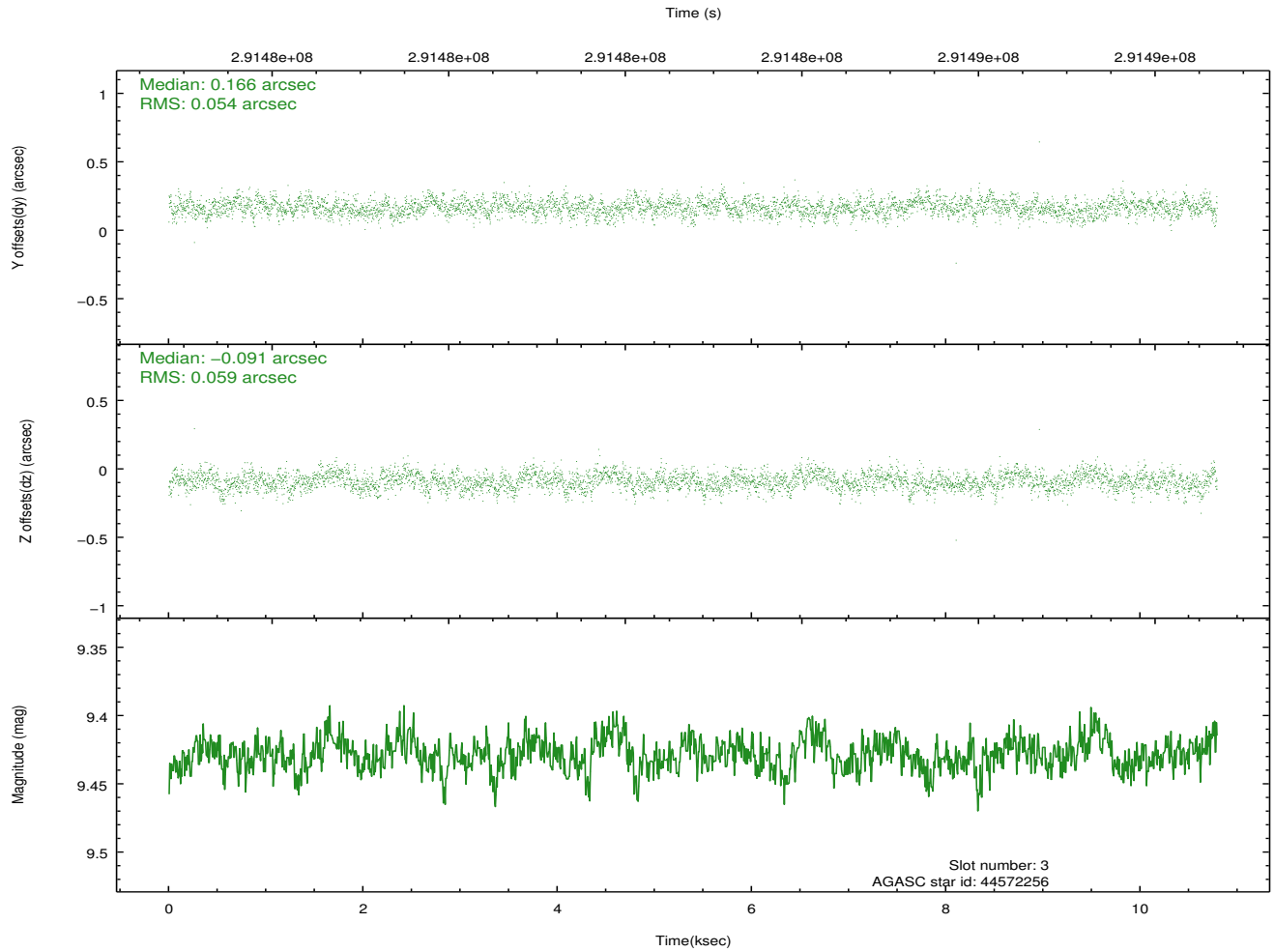
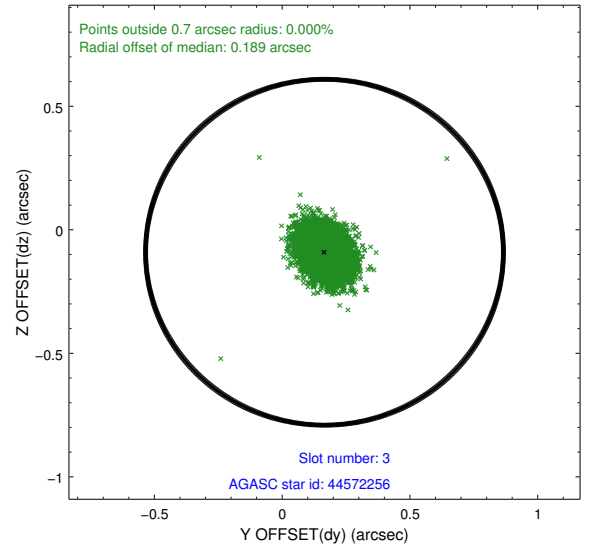
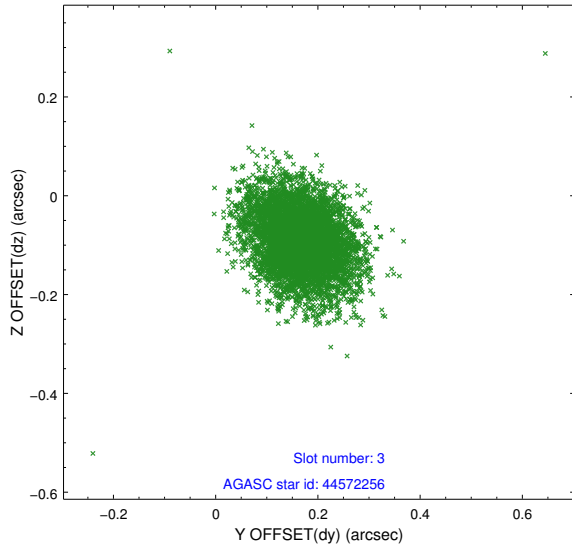


Slot Statistics

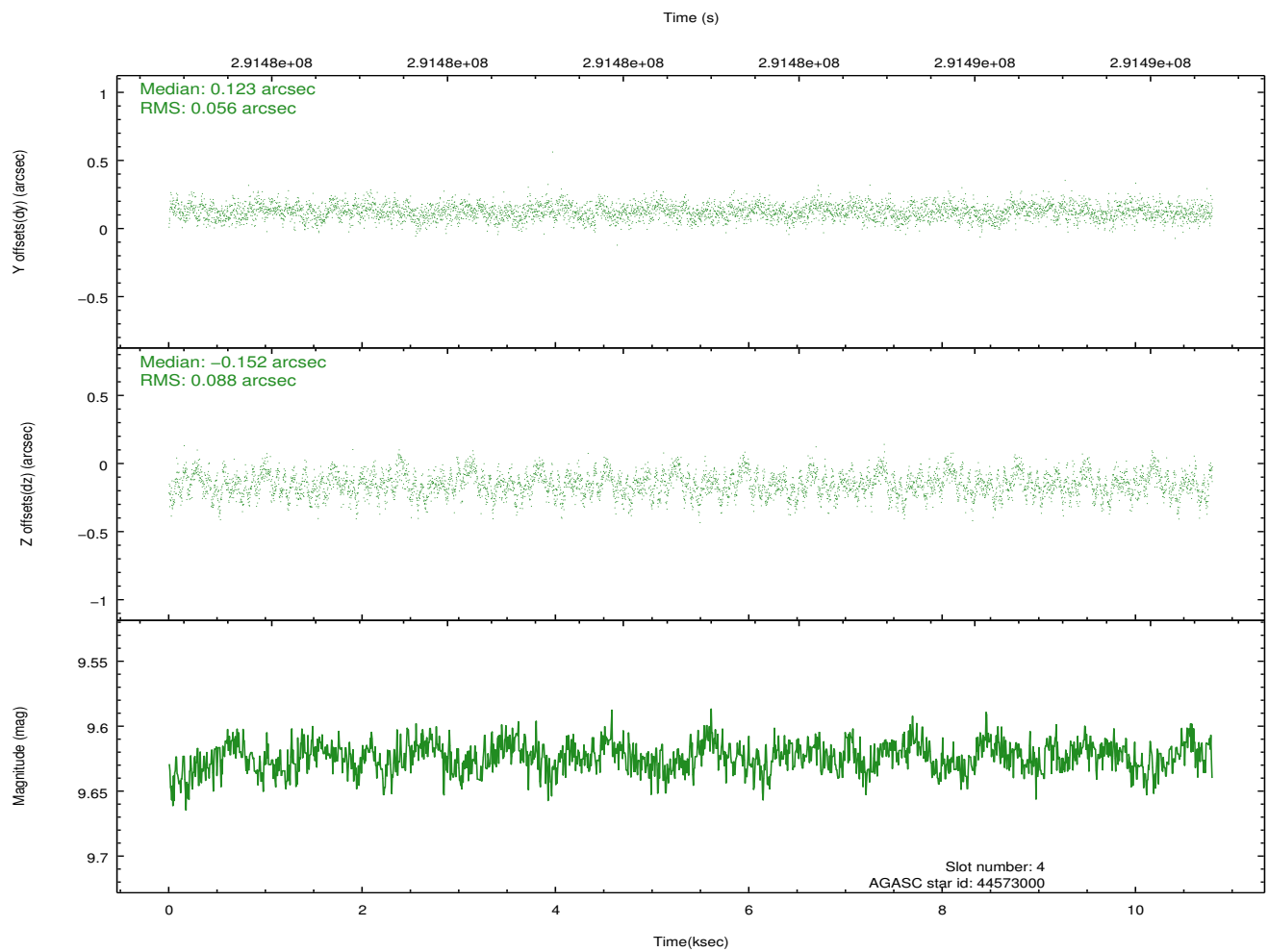
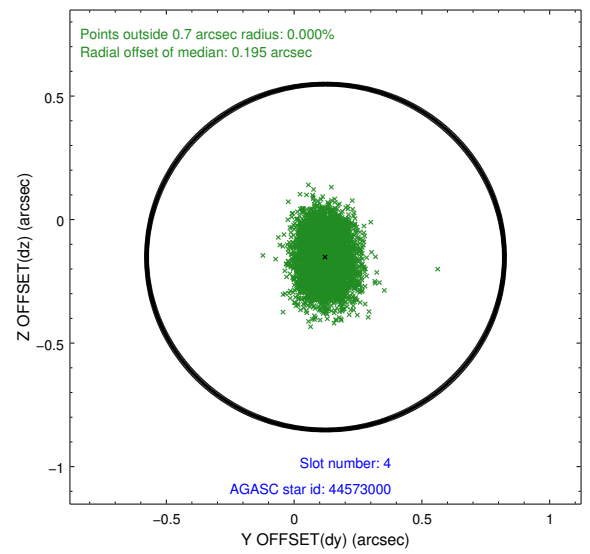
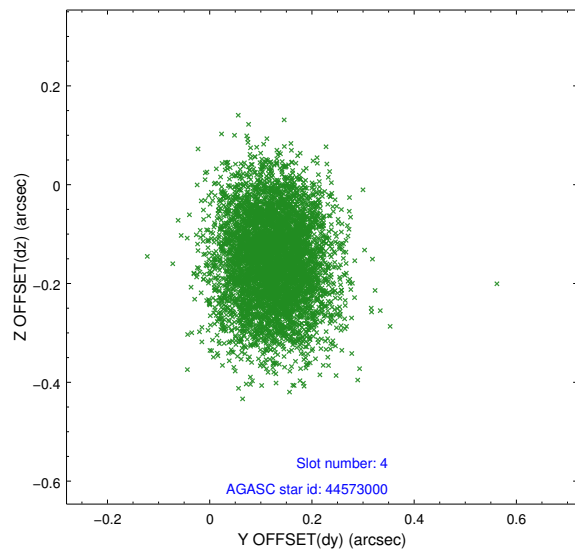
slot	status	id	mag	n_pts	med_dy	med_dz	dr1	dr2	ra	dec	mean_y	mean_z
0	FID	ACIS-S-2	7.10	2632	-0.054	-0.064	0.007	0.011	0.000000	0.000000	-766.93	-1735.16
1	FID	ACIS-S-4	7.20	2632	0.194	0.043	0.006	0.010	0.000000	0.000000	2146.39	172.92
2	FID	ACIS-S-5	7.23	2632	-0.171	0.030	0.006	0.011	0.000000	0.000000	-1819.26	167.14
3	GUIDE	44572256	9.43	5259	0.166	-0.091	0.084	0.139	228.870985	3.041679	-1407.62	1800.79
4	GUIDE	44573000	9.62	5260	0.123	-0.152	0.110	0.183	228.790478	3.324094	-360.64	1944.49
5	GUIDE	44573656	9.21	5262	-0.058	0.146	0.095	0.157	229.371311	3.644333	487.79	-283.05
6	GUIDE	45096160	8.84	5263	-0.172	-0.009	0.069	0.113	228.815729	4.089671	2355.28	1466.47
7	GUIDE	45097800	7.63	5264	-0.057	0.105	0.054	0.087	229.427003	3.778132	936.99	-549.31

2.4 Star Slots

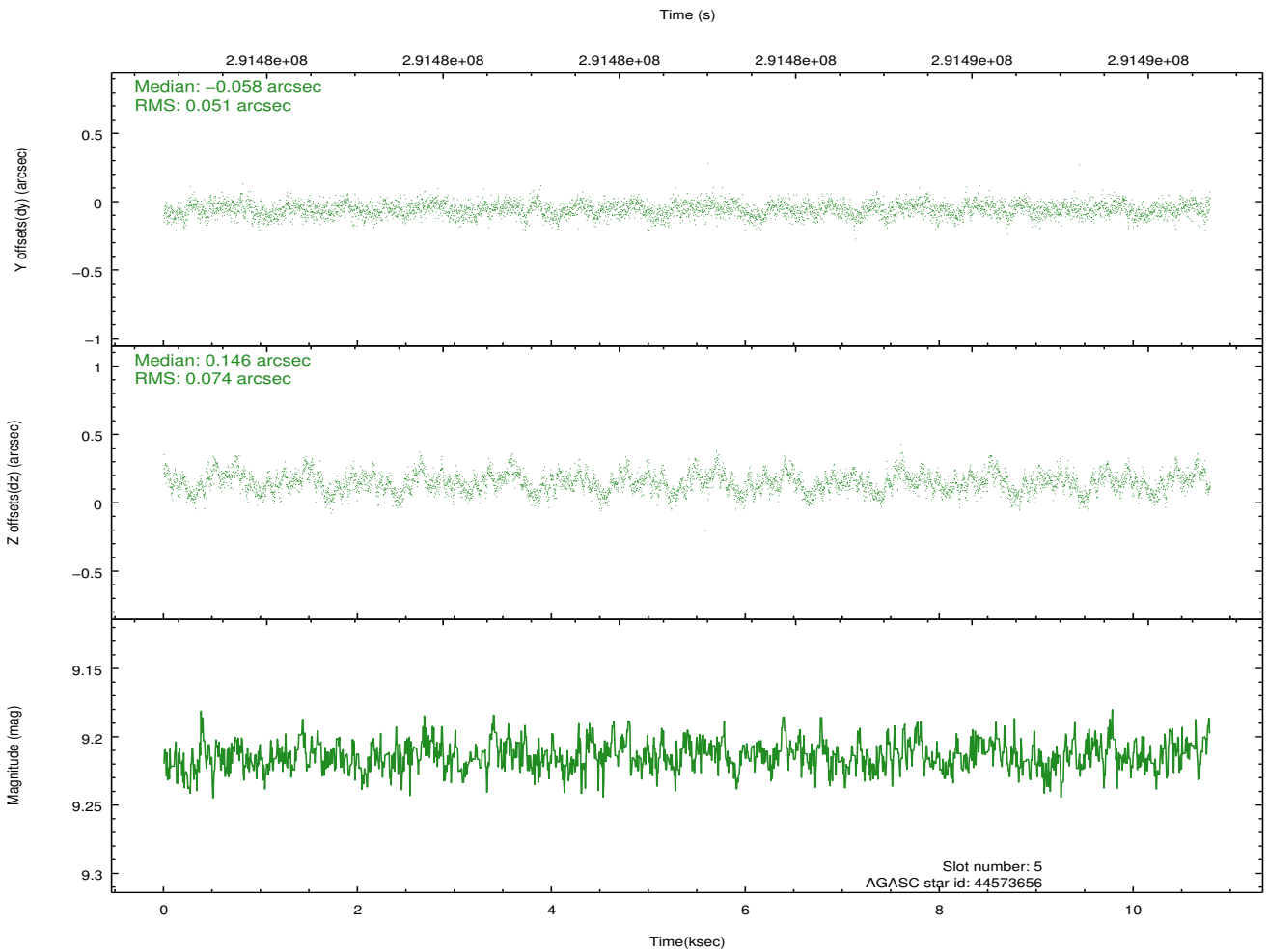
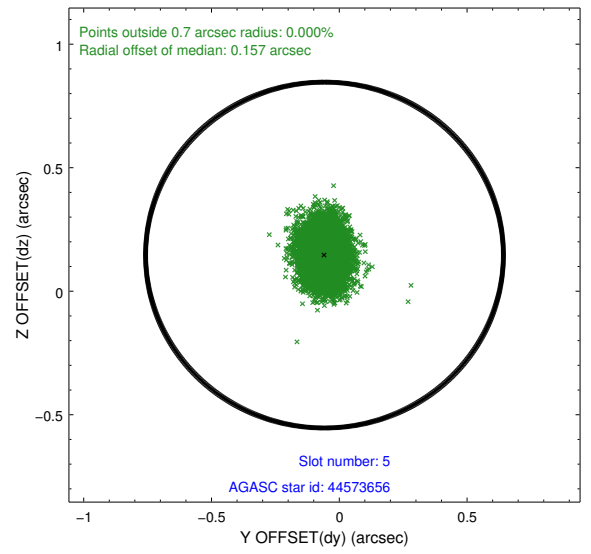
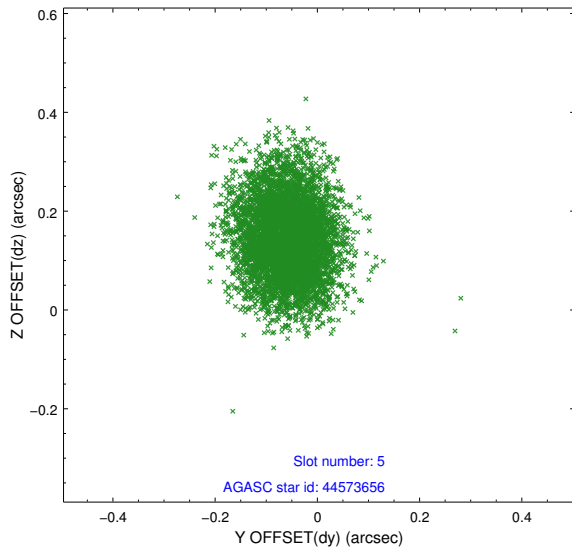
2.4.1 Slot 3



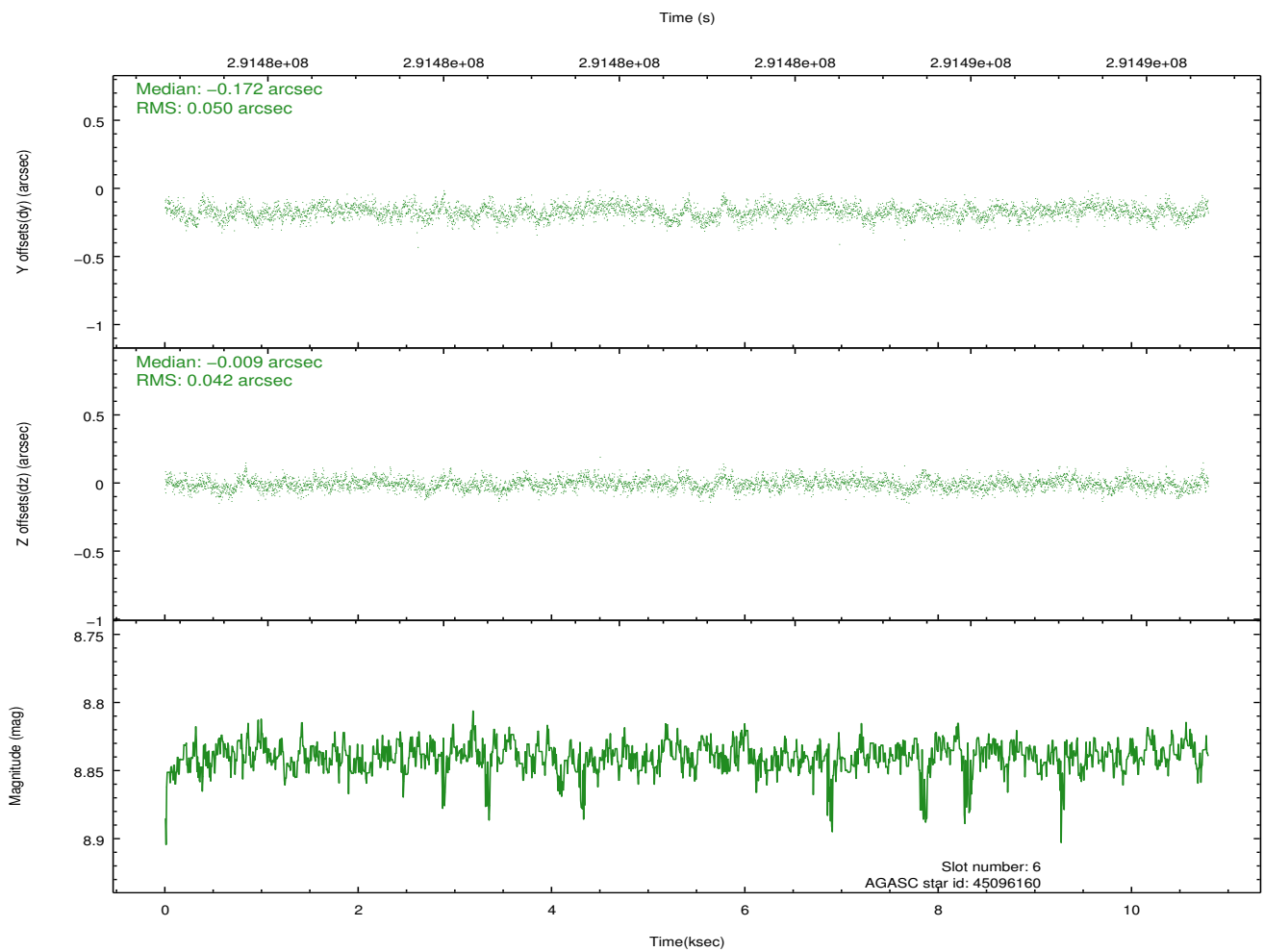
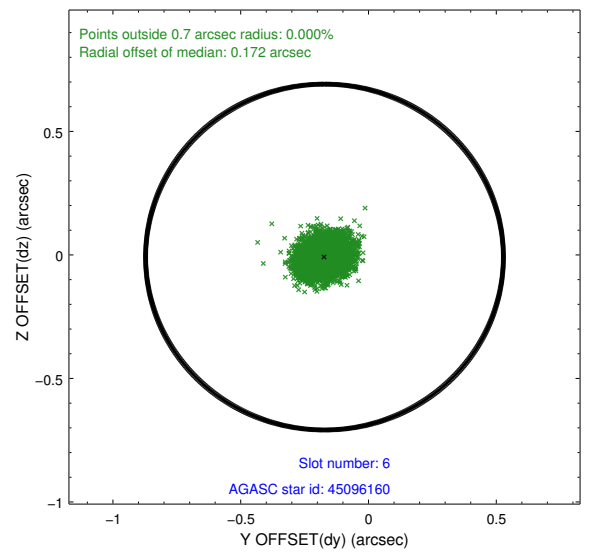
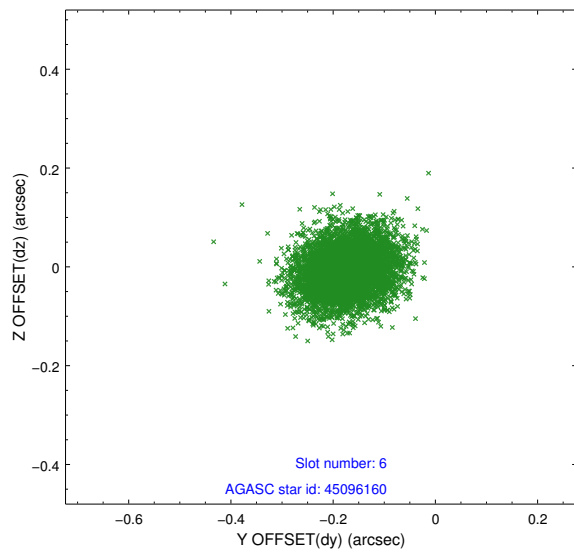
2.4.2 Slot 4



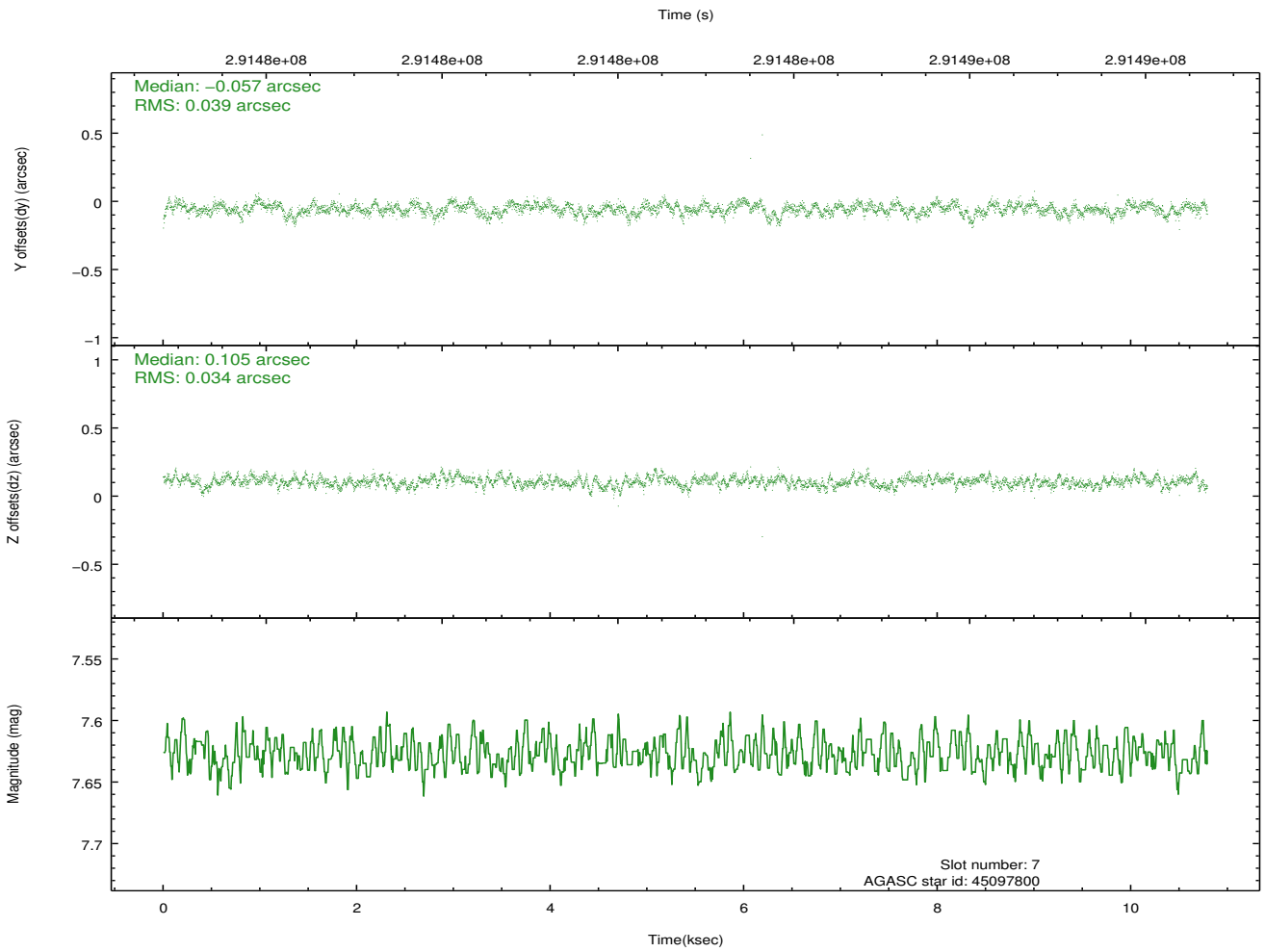
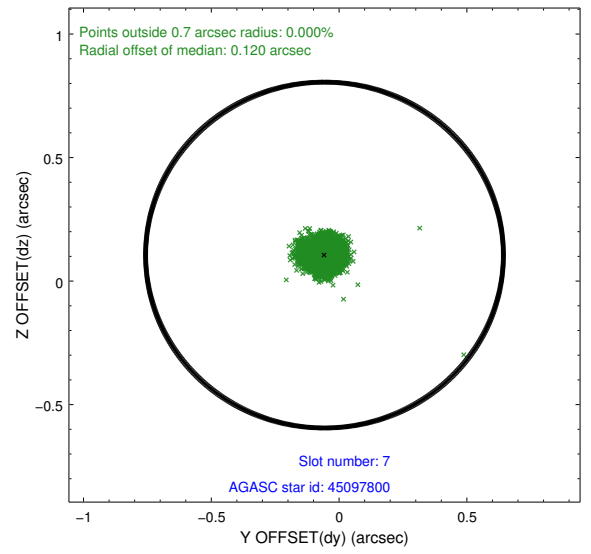
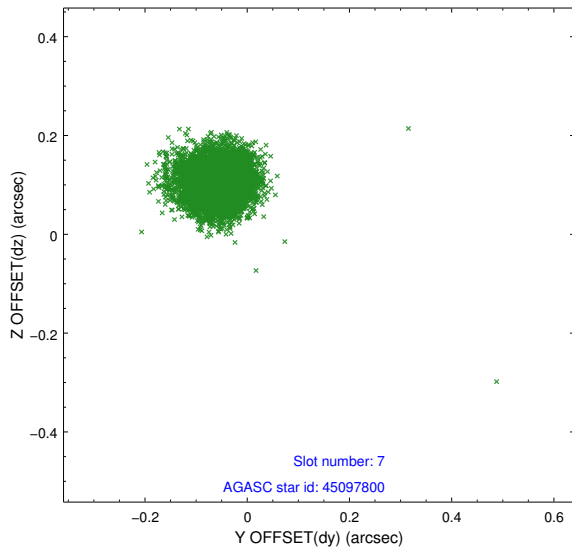
2.4.3 Slot 5



2.4.4 Slot 6

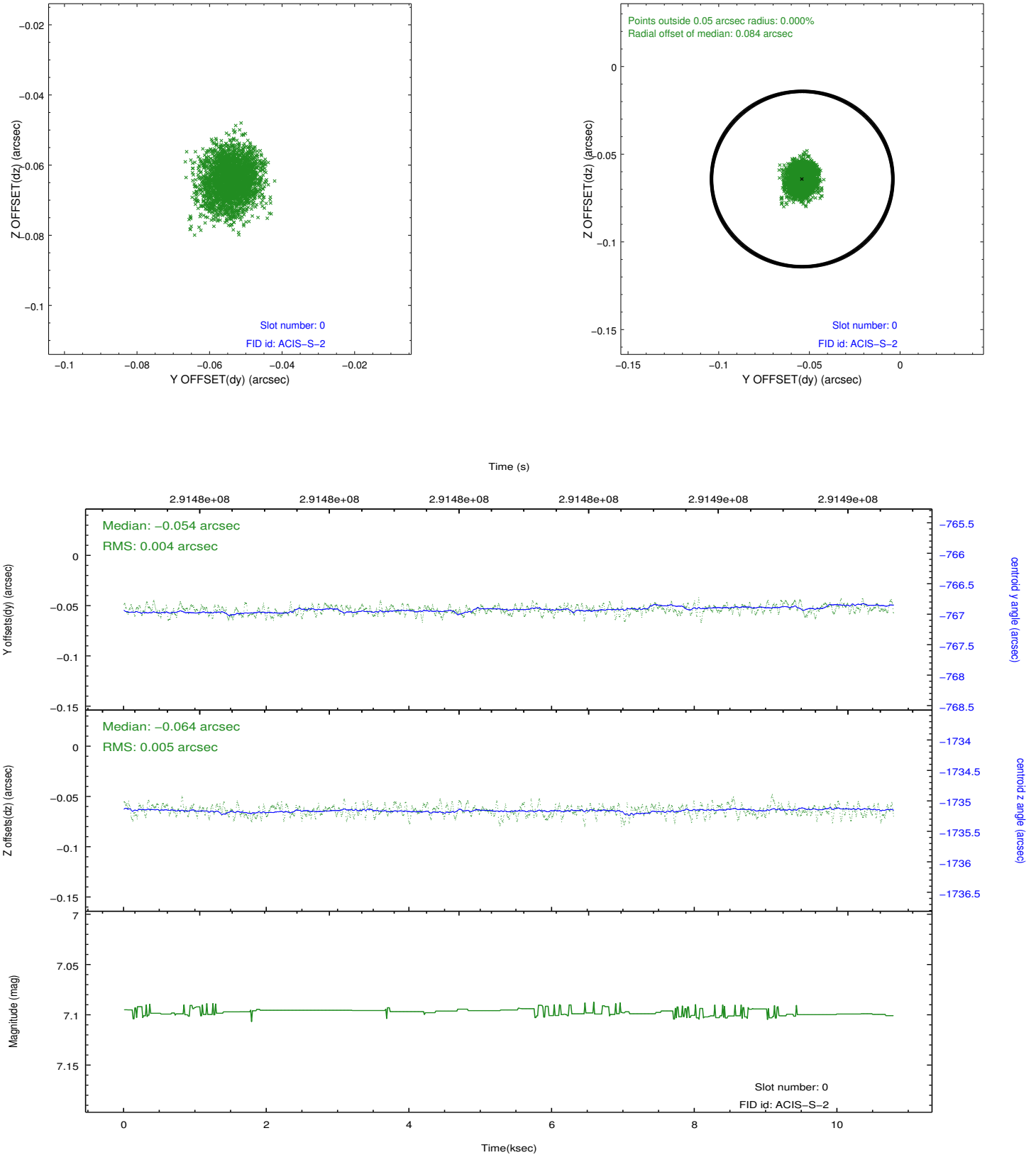


2.4.5 Slot 7

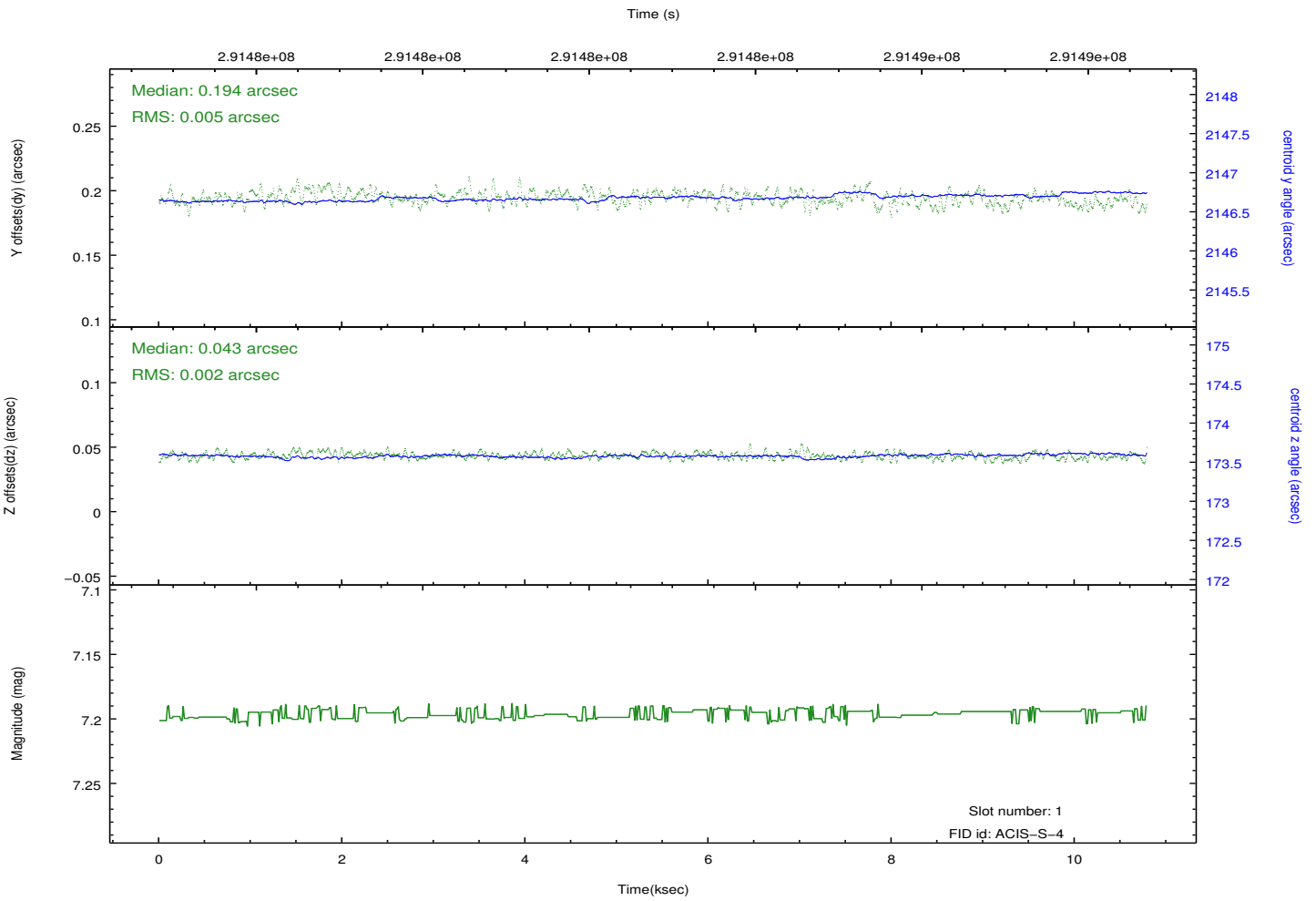
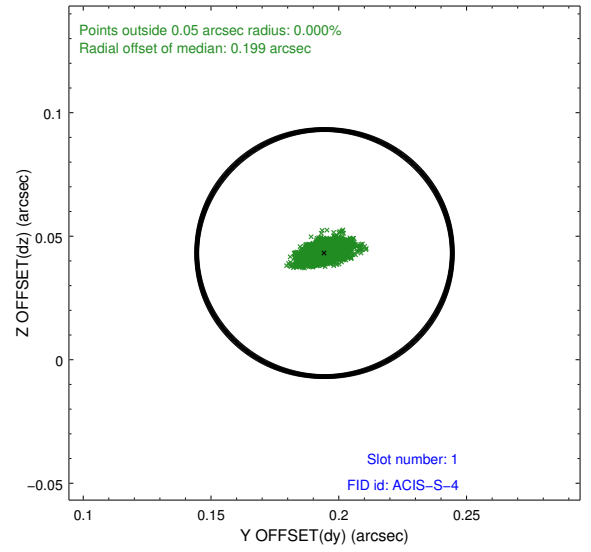
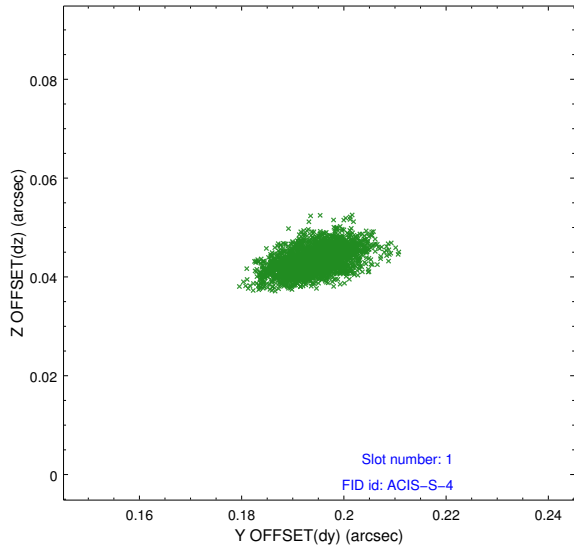


2.5 FID Slots

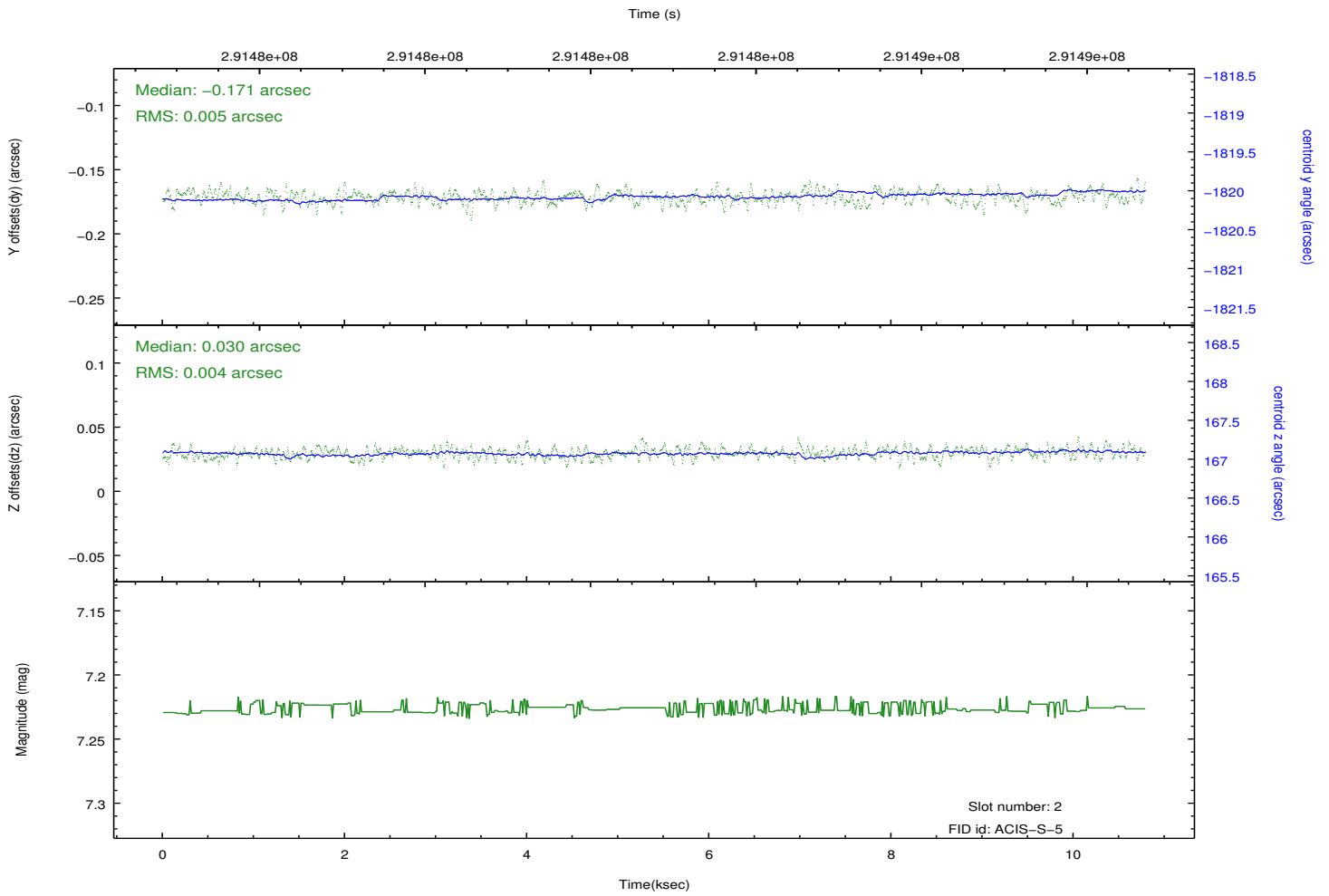
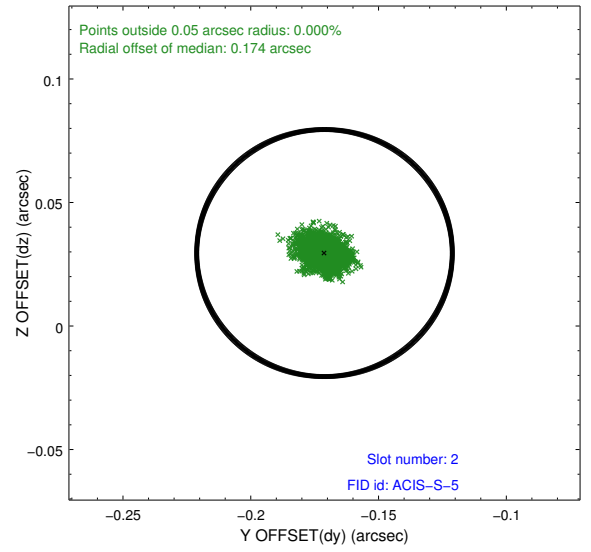
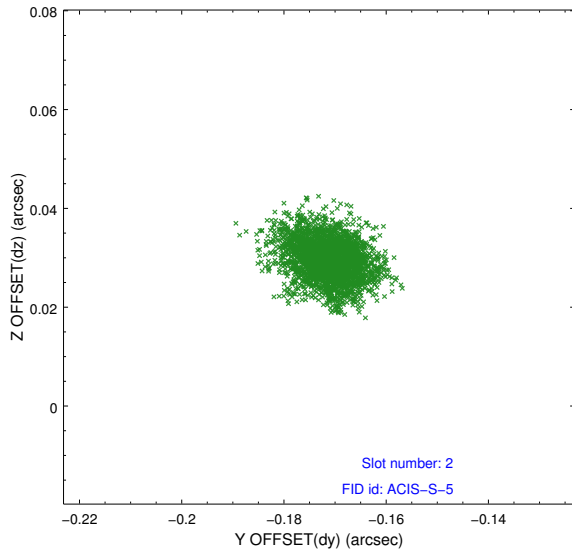
2.5.1 Slot 0



2.5.2 Slot 1



2.5.3 Slot 2



A Summary

A.1 Status

V&V Scientist	Beth Sundheim
V&V Date (YYYY-MM-DD)	2012.04.23
V&V Edition	1
V&V Disposition and Status	OK
V&V Charge Time	10.044

A.2 Comments