

V&V Reference Report

L2 ASCDS Version : 8.4.5

Observation 786 - L2 Version 3
Chandra X-Ray Center

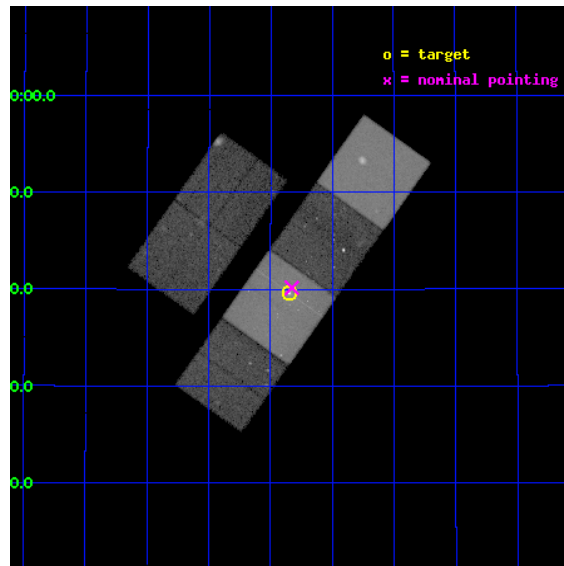
L2 Processing Date : Sep 1 2012

Contents

1	Front	2
2	OBI	3
2.1	OBI	3
2.1.1	Images	3
2.1.2	Bias	3
2.1.3	Parameters	4
2.1.4	Events	4
2.2	Compared Parameters	5
2.3	Aspect	6
2.4	Star Slots	9
2.4.1	Slot 3	9
2.4.2	Slot 4	10
2.4.3	Slot 5	11
2.4.4	Slot 6	12
2.4.5	Slot 7	13
2.5	FID Slots	14
2.5.1	Slot 0	14
2.5.2	Slot 1	15
2.5.3	Slot 2	16
A	Summary	17
A.1	Status	17
A.2	Comments	17

1 Front

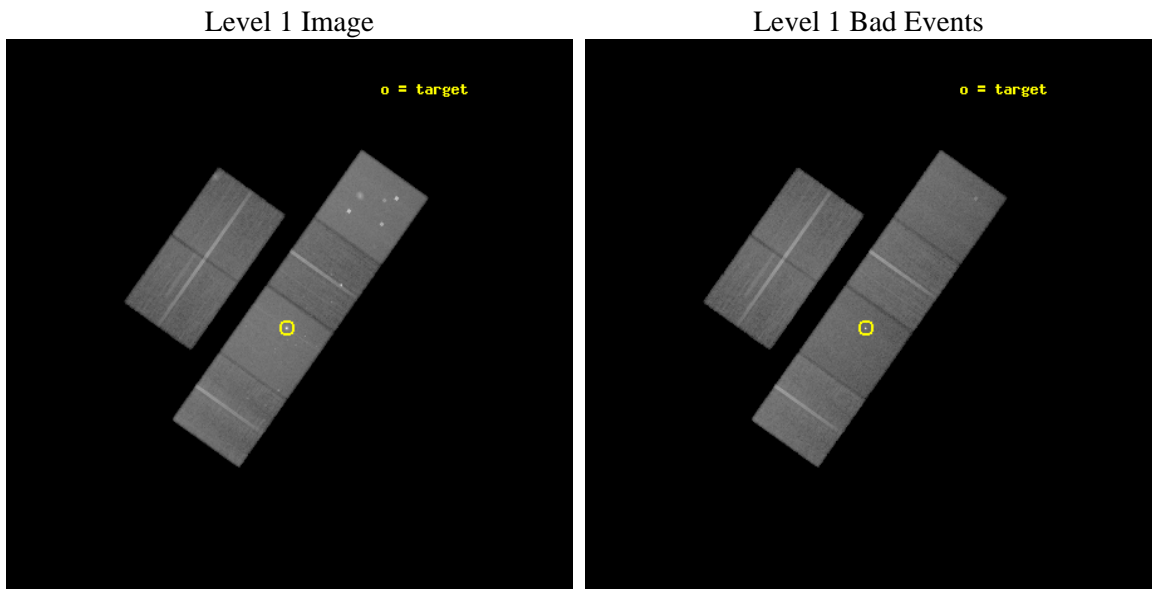
seq_num	600089	Sequence number
obs_id	786	Observation id
title	THE X-RAY SOURCE POPULATION OF M33	Proposal title
observer	Dr Jonathan McDowell	Principal investigator
object	M33	Source name
dtcycle	0	
cycle	P	events from which exps? Prim/Second/Both
ra_targ	23.461667	Observer's specified target RA [deg]
dec_targ	30.660167	Observer's specified target Dec [deg]
ra_nom	23.456816341928	Nominal RA [deg]
dec_nom	30.669164473355	Nominal Dec [deg]
roll_nom	125.31655732995	Nominal Roll [deg]
revision	3	Processing version of data
ontime	46851.200043619	Sum of GTIs [s]
livetime	46257.941938261	Livetime [s]
ontime2	46851.200043619	Sum of GTIs [s]
ontime3	46847.959083378	Sum of GTIs [s]
ontime5	46851.200043619	Sum of GTIs [s]
ontime6	46847.959083363	Sum of GTIs [s]
ontime7	46851.200043619	Sum of GTIs [s]
ontime8	46851.200043619	Sum of GTIs [s]
l2events	510125	Number of level 2 events



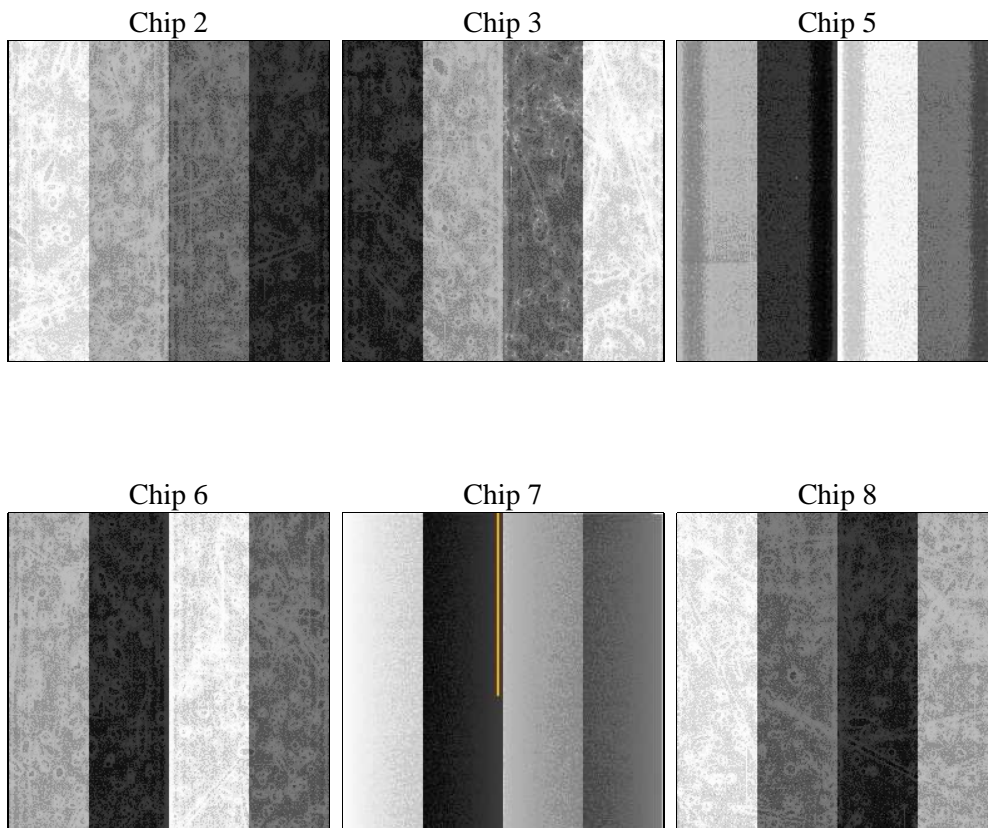
2 OBI

2.1 OBI

2.1.1 Images



2.1.2 Bias



2.1.3 Parameters

obi_num	1	Obi number	sched_exp_time	46900.000000	[s] Scheduled observation exposure time
ascdsver	8.4.5	Processing system revision	ontime	46851.200043619	Sum of GTIs [s]
caldbver	4.5.1.1	 	ontime2	46851.200043619	Sum of GTIs [s]
date	2012-09-01T05:16:08	Date and time of file creation	ontime3	46847.959083378	Sum of GTIs [s]
revision	3	Processing version of data	ontime5	46851.200043619	Sum of GTIs [s]
			ontime6	46847.959083363	Sum of GTIs [s]
			ontime7	46851.200043619	Sum of GTIs [s]
			ontime8	46851.200043619	Sum of GTIs [s]
			l1events	2041718	Number of level 1 events

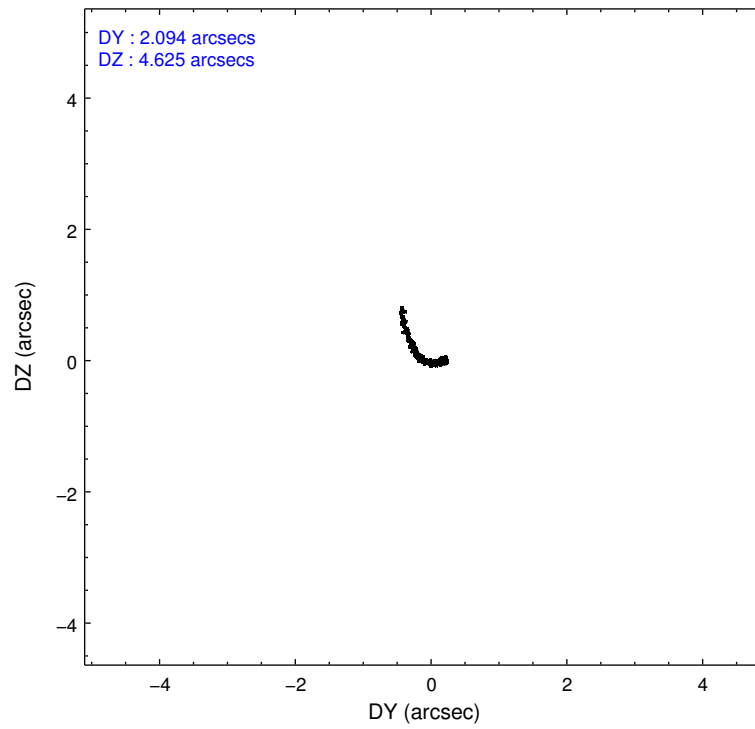
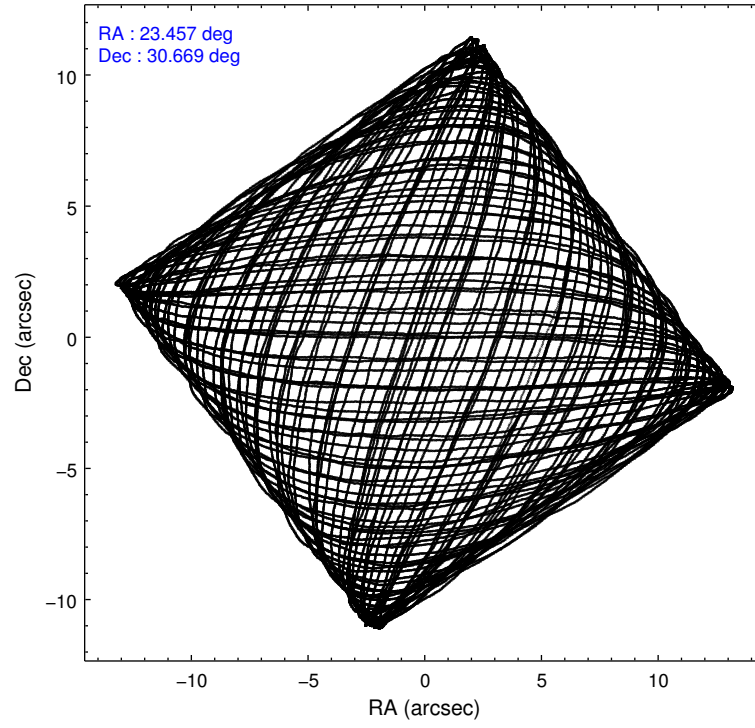
2.1.4 Events

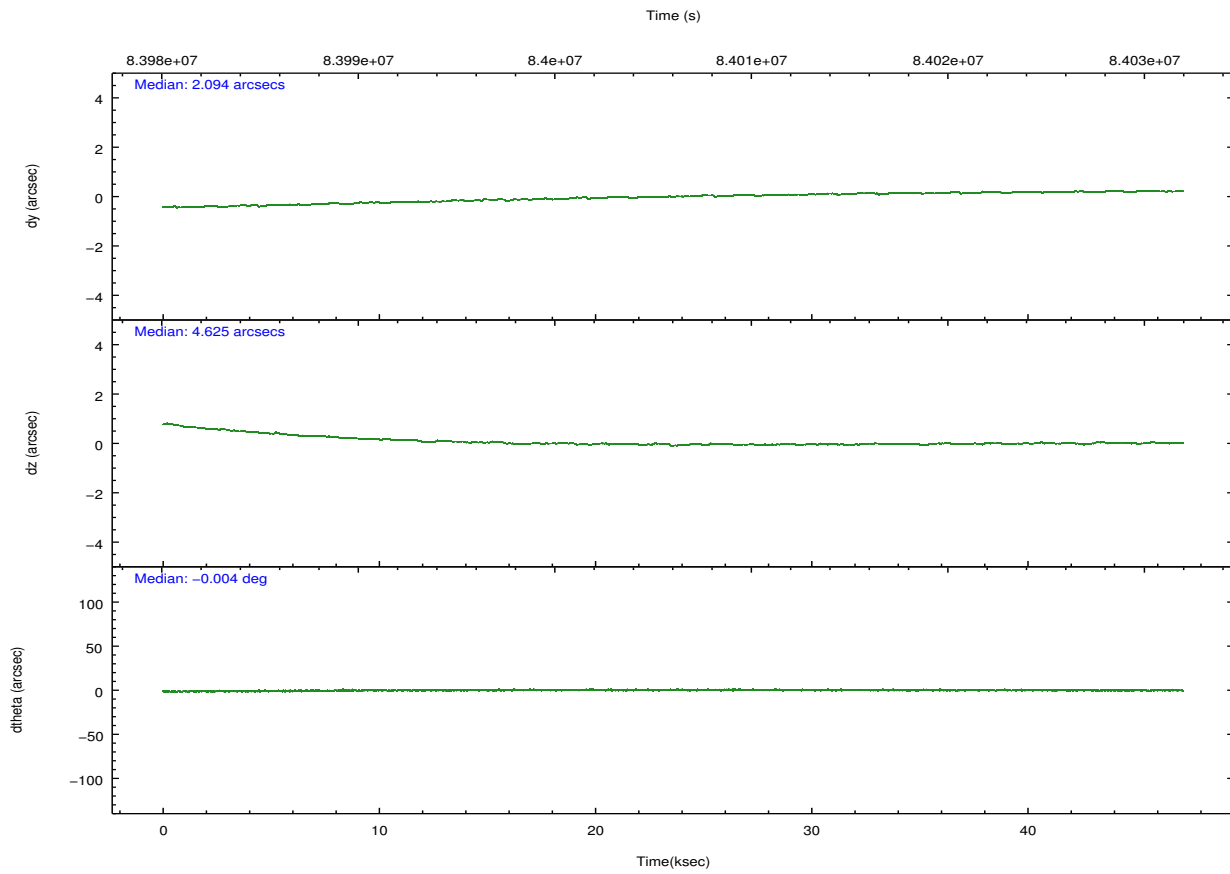
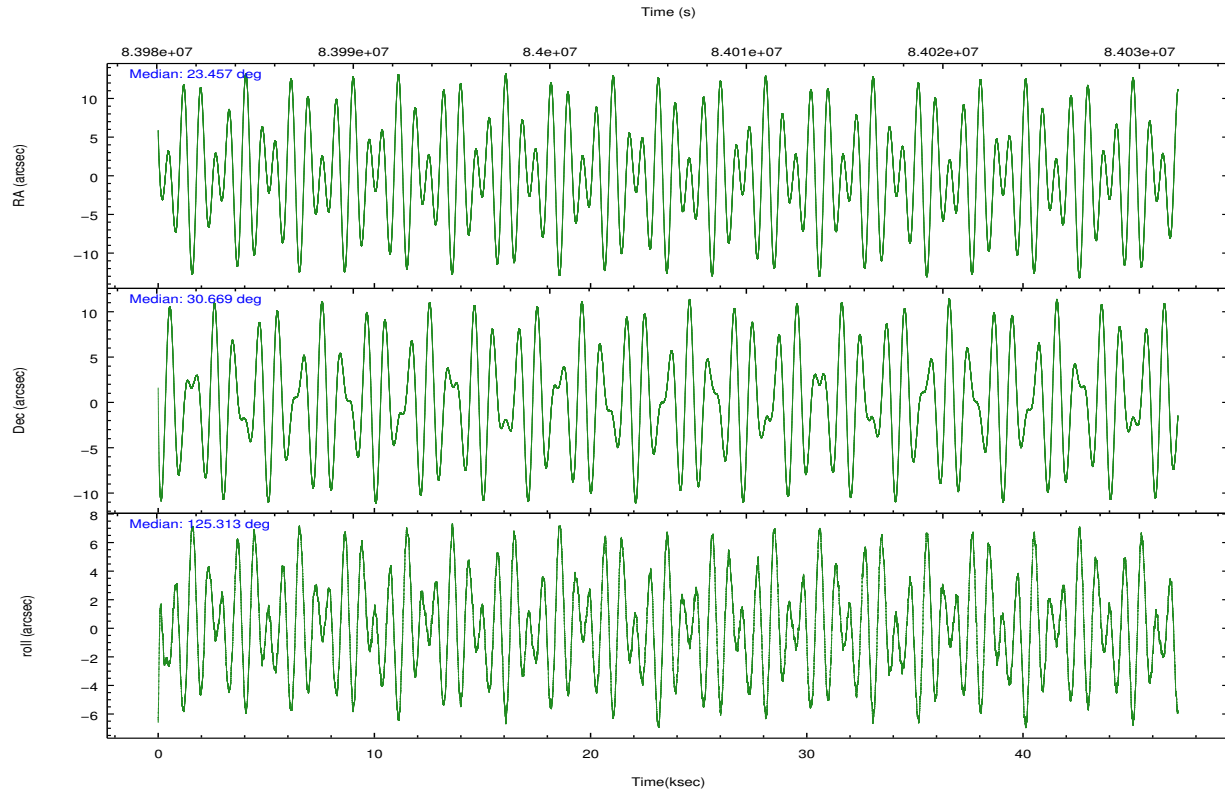
	ccd 2	ccd 3	ccd 5	ccd 6	ccd 7	ccd 8		ccd 2	ccd 3	ccd 5	ccd 6	ccd 7	ccd 8
level 1 events	286761	278297	434461	289287	407244	345668	grade 0 events	14673	13804	42589	18830	24958	22247
rejected events	254327	247183	205579	250841	210181	278452		5%	4%	9%	6%	6%	6%
rejected %	88%	88%	47%	86%	51%	80%	grade 1 events	114	130	1094	229	609	181
								0%	0%	0%	0%	0%	0%
							grade 2 events	6548	5842	65308	6799	39402	14299
								2%	2%	15%	2%	9%	4%
							grade 3 events	2933	3090	10557	3398	18292	7075
								1%	1%	2%	1%	4%	2%
							grade 4 events	2983	2992	10114	3241	18084	6652
								1%	1%	2%	1%	4%	1%
							grade 5 events	9254	10101	29646	11364	34804	14385
								3%	3%	6%	3%	8%	4%
							grade 6 events	5303	5394	100347	6189	96351	16951
								1%	1%	23%	2%	23%	4%
							grade 7 events	244953	236944	174806	239237	174744	263878
								85%	85%	40%	82%	42%	76%

2.2 Compared Parameters

Parameter	Planned	Actual	Parameter	Planned	Actual
Instrument	ACIS	ACIS	Obspar format version number	7	7
Detector	ACIS-235678	ACIS-235678	Obspar file type	PREDICTED	ACTUAL
Grating	NONE	NONE	Obspar update status	NONE	UPDATED
Data mode	FAINT	FAINT	Number of optional ACIS chips dropped	0	0
Observation mode	POINTING	POINTING	On-chip summing requested	N	N
[deg] Pointing RA	23.485819	23.45681634192812	Subarray requested	NONE	NONE
[deg] Pointing Dec	30.657876	30.66916447335522	Alternating exposures requested	N	N
[deg] Pointing Roll	125.145135	125.3165573299501	[s] Primary exposure time	0.000000	3.2
[mm] SIM focus pos	-0.684267	-0.6828225247311905			
[mm] SIM defocus	0	0.001444936568705701			
[mm] SIM translation stage pos	-190.132523	-190.1425803651734			
[mm] SIM translation stage offset	0	0.01005778216563158			
[s] Observation start time (MET)	83982697.184000	83981689.69513801			
Observation start date	2000-08-30T00:30:33	2000-08-30T00:14:49			
[s] Observation end time (MET)	84029597.184000	84029906.721949			
Observation end date	2000-08-30T13:32:13	2000-08-30T13:38:26			
Read mode	TIMED	TIMED			

2.3 Aspect





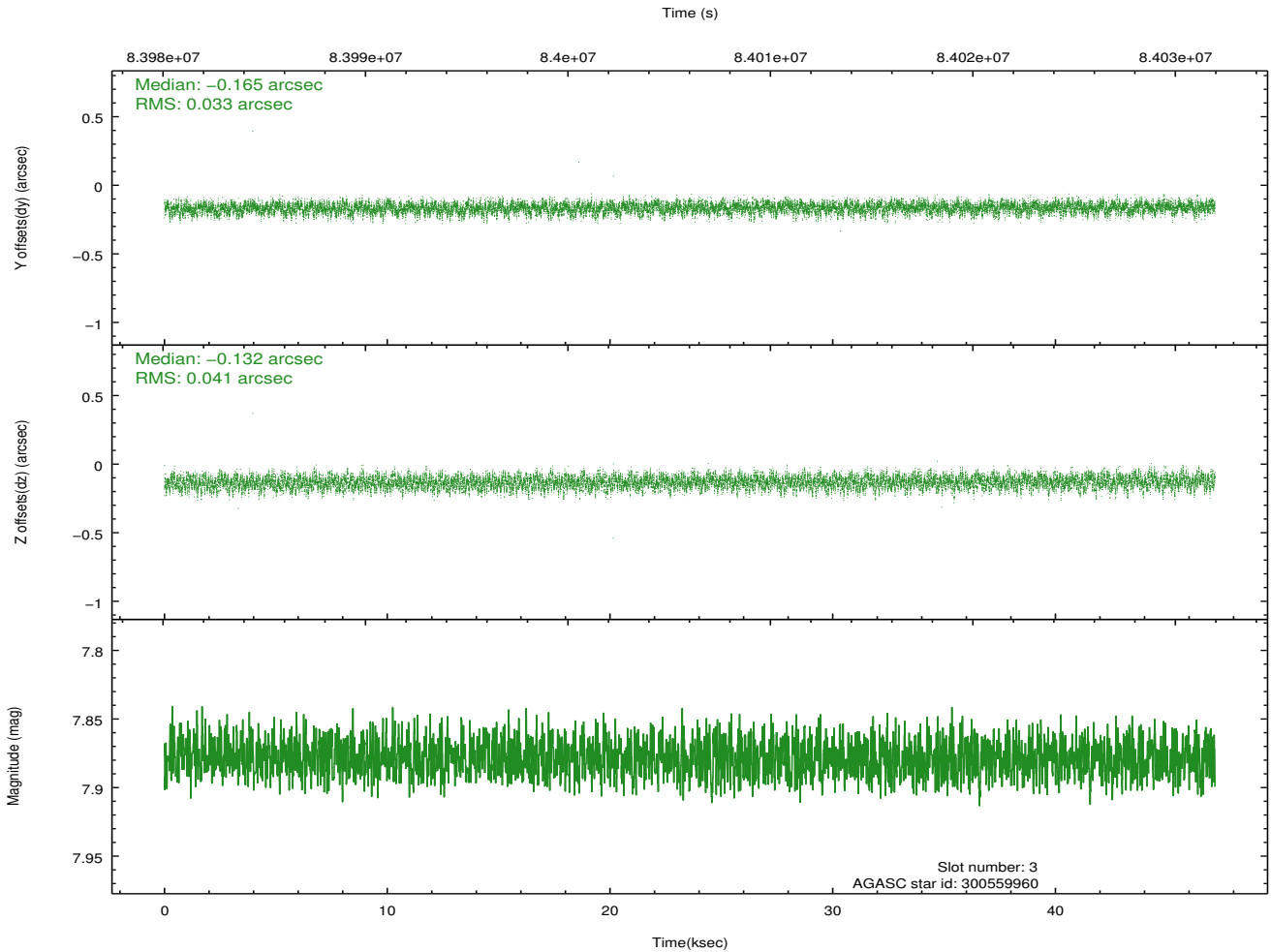
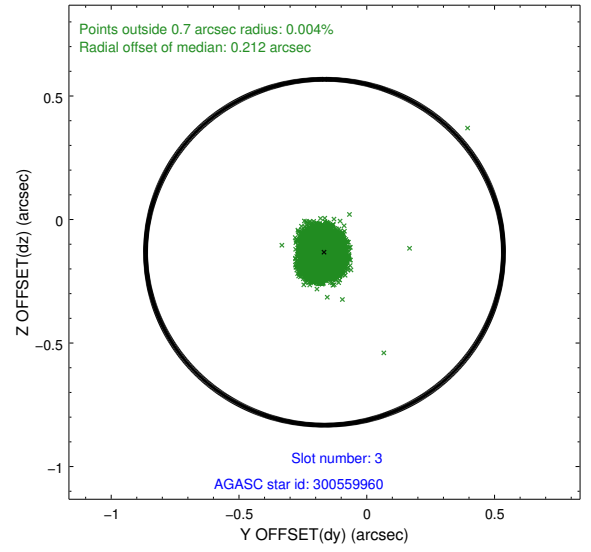
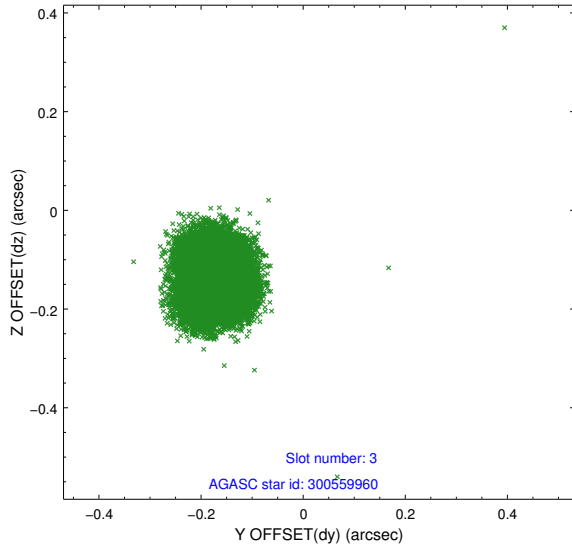
Slot Statistics

slot	status	id	mag	n_pts	med_dy	med_dz	dr1	dr2	ra	dec	mean_y	mean_z
0	FID	ACIS-S-2	7.11	11501	-0.025	-0.009	0.009	0.017	0.000000	0.000000	-754.69	-1725.78
1	FID	ACIS-S-4	7.21	11501	-0.013	0.015	0.007	0.014	0.000000	0.000000	2158.60	182.75
2	FID	ACIS-S-5	7.24	11504	0.007	0.003	0.011	0.021	0.000000	0.000000	-1807.52	176.39
3	GUIDE	300559960	7.88	23005	-0.165	-0.132	0.056	0.091	22.944463	30.624765	870.61	1437.74
4	GUIDE	300559832	7.86	23004	0.028	0.235	0.056	0.090	24.407732	30.552794	-1945.21	-2125.66
5	GUIDE	300556352	8.42	23000	0.095	-0.048	0.058	0.095	23.404474	30.389211	-645.76	763.33
6	GUIDE	300423280	8.91	22996	-0.144	-0.110	0.073	0.119	22.470839	30.803648	2246.74	2256.35
7	GUIDE	300559160	9.41	22996	0.188	0.055	0.076	0.124	24.161026	30.632205	-1274.40	-1660.37

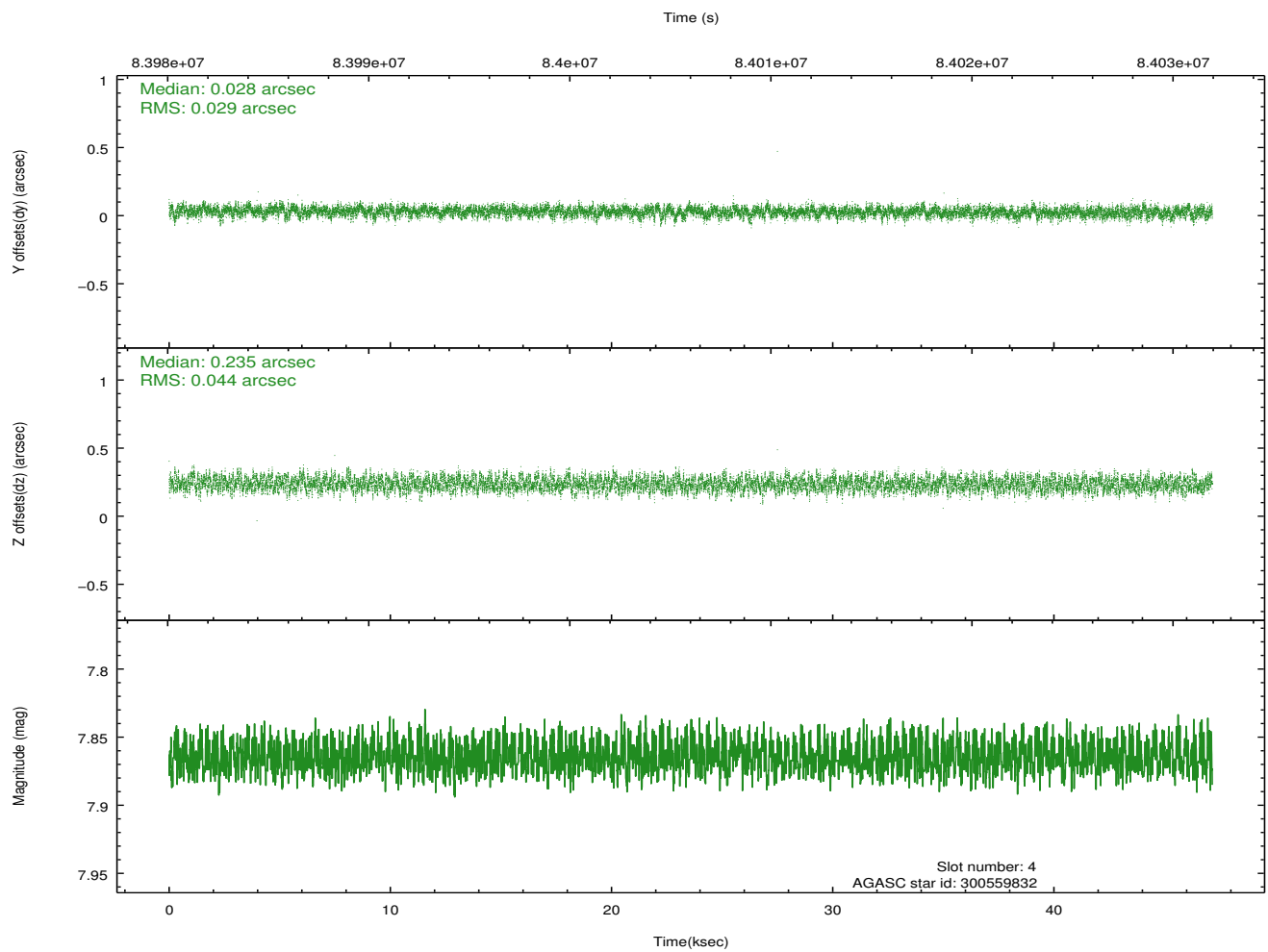
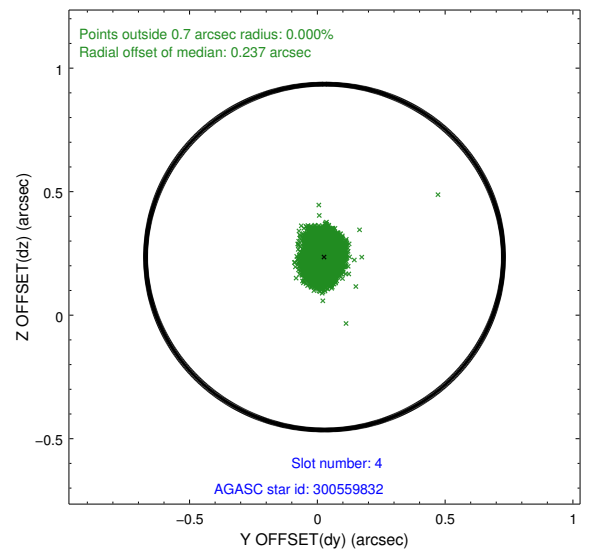
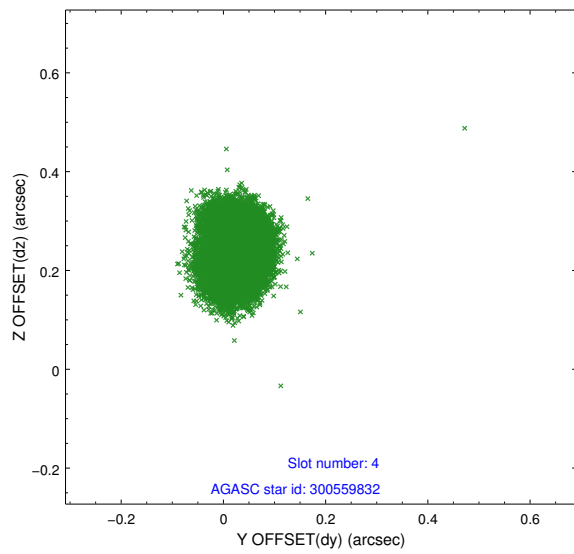
∞

2.4 Star Slots

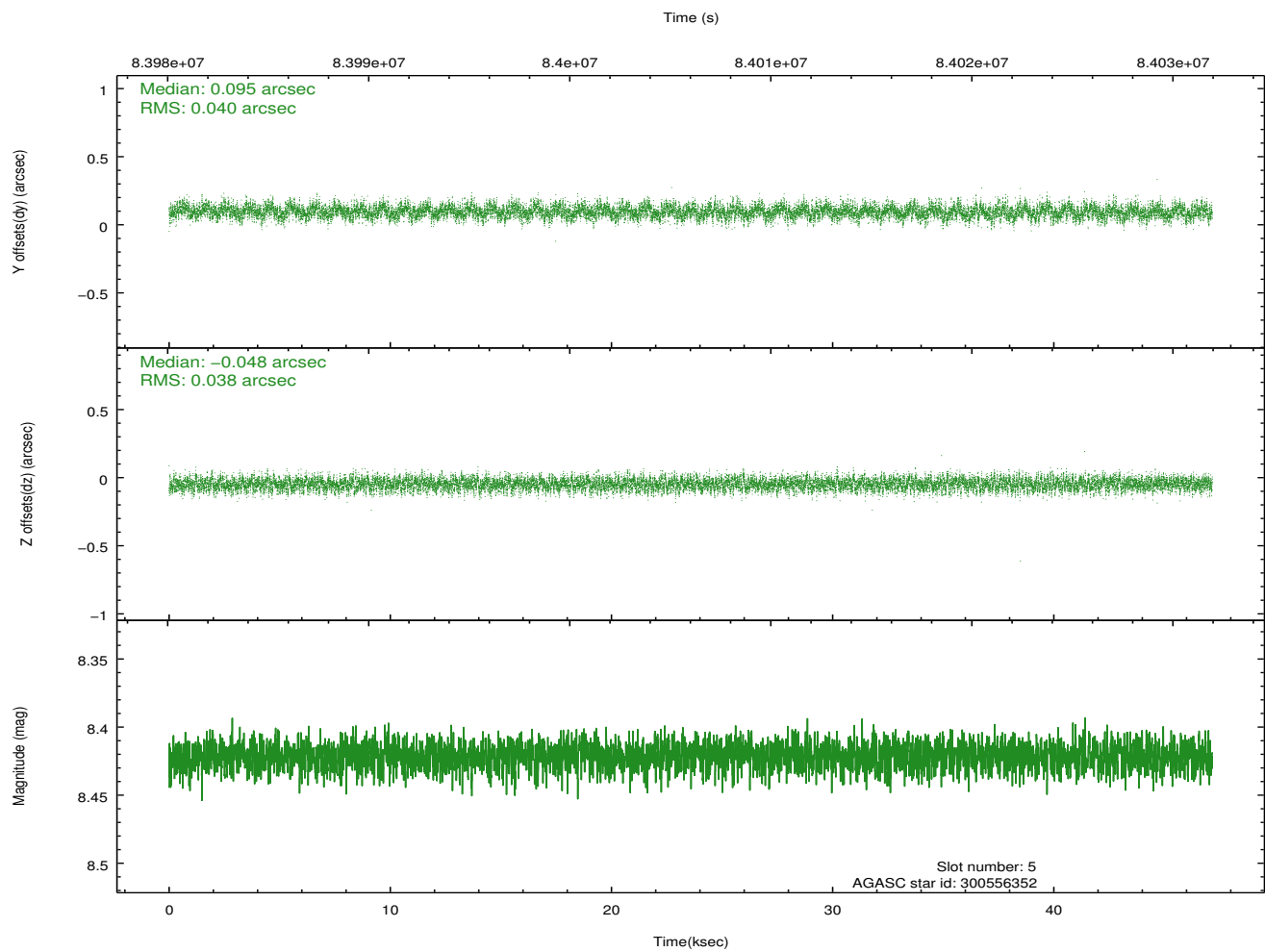
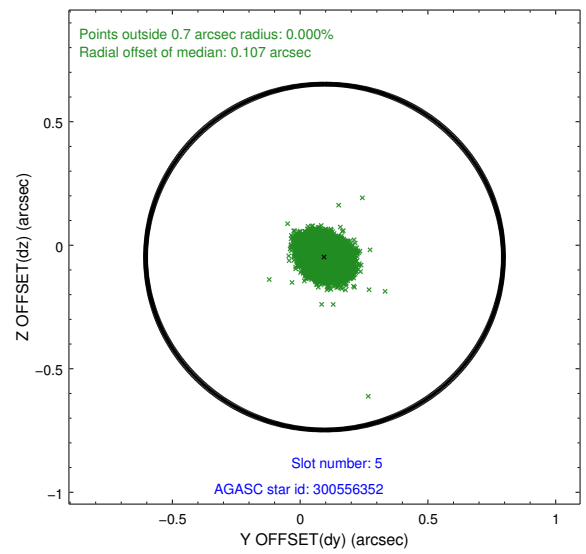
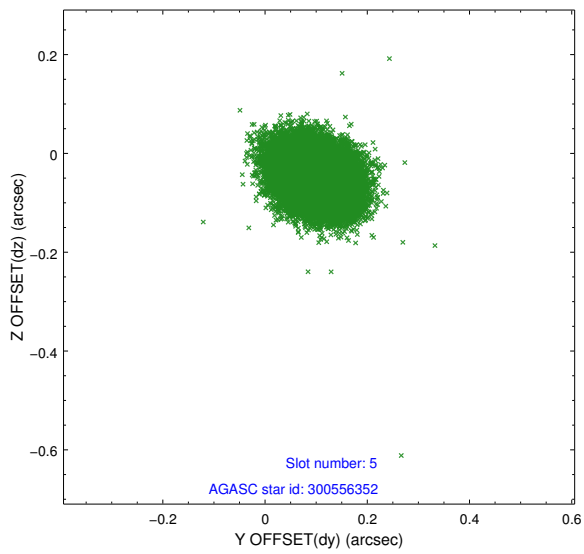
2.4.1 Slot 3



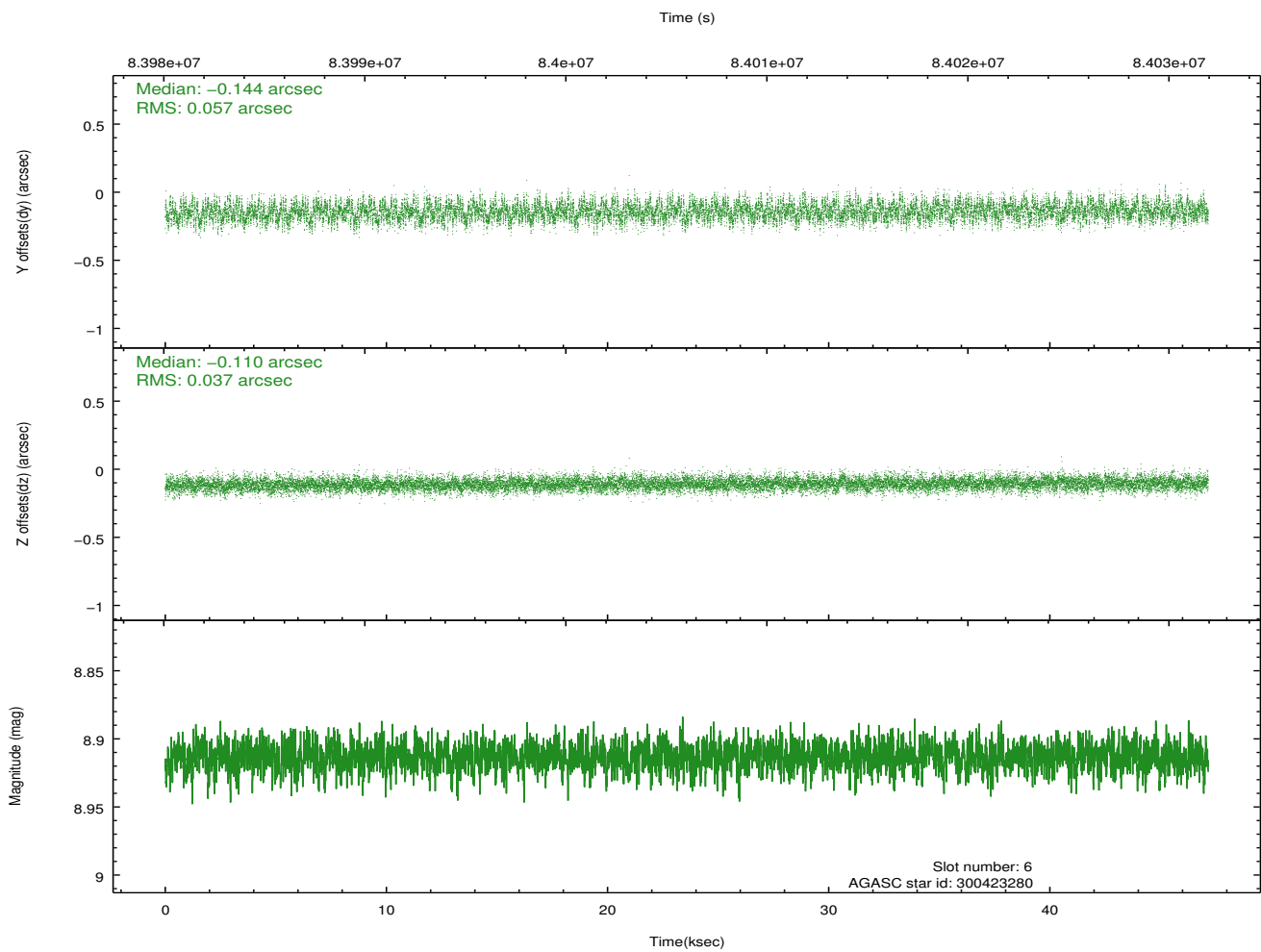
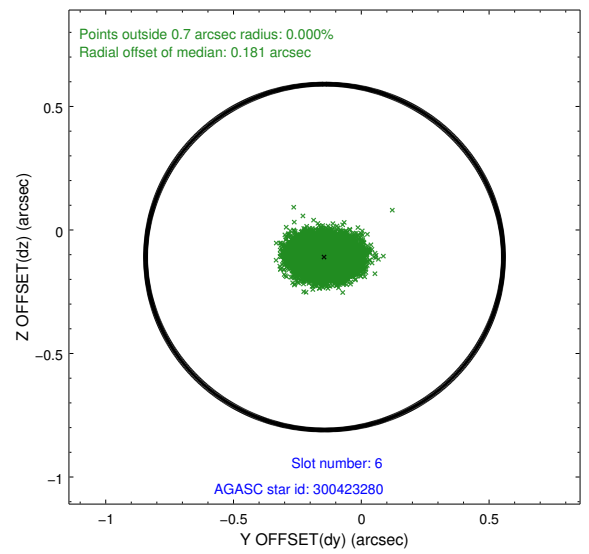
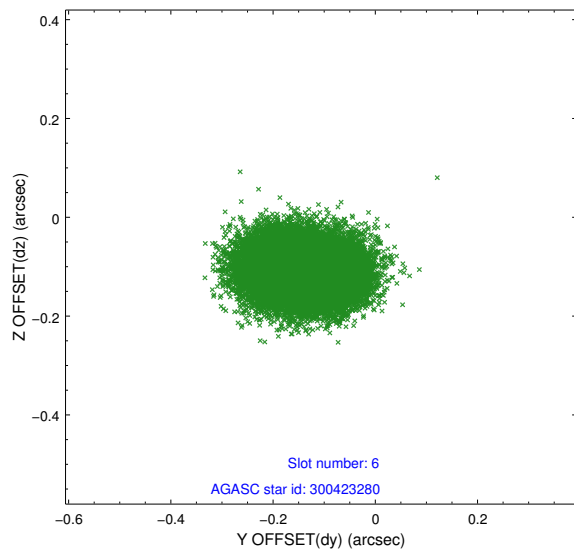
2.4.2 Slot 4



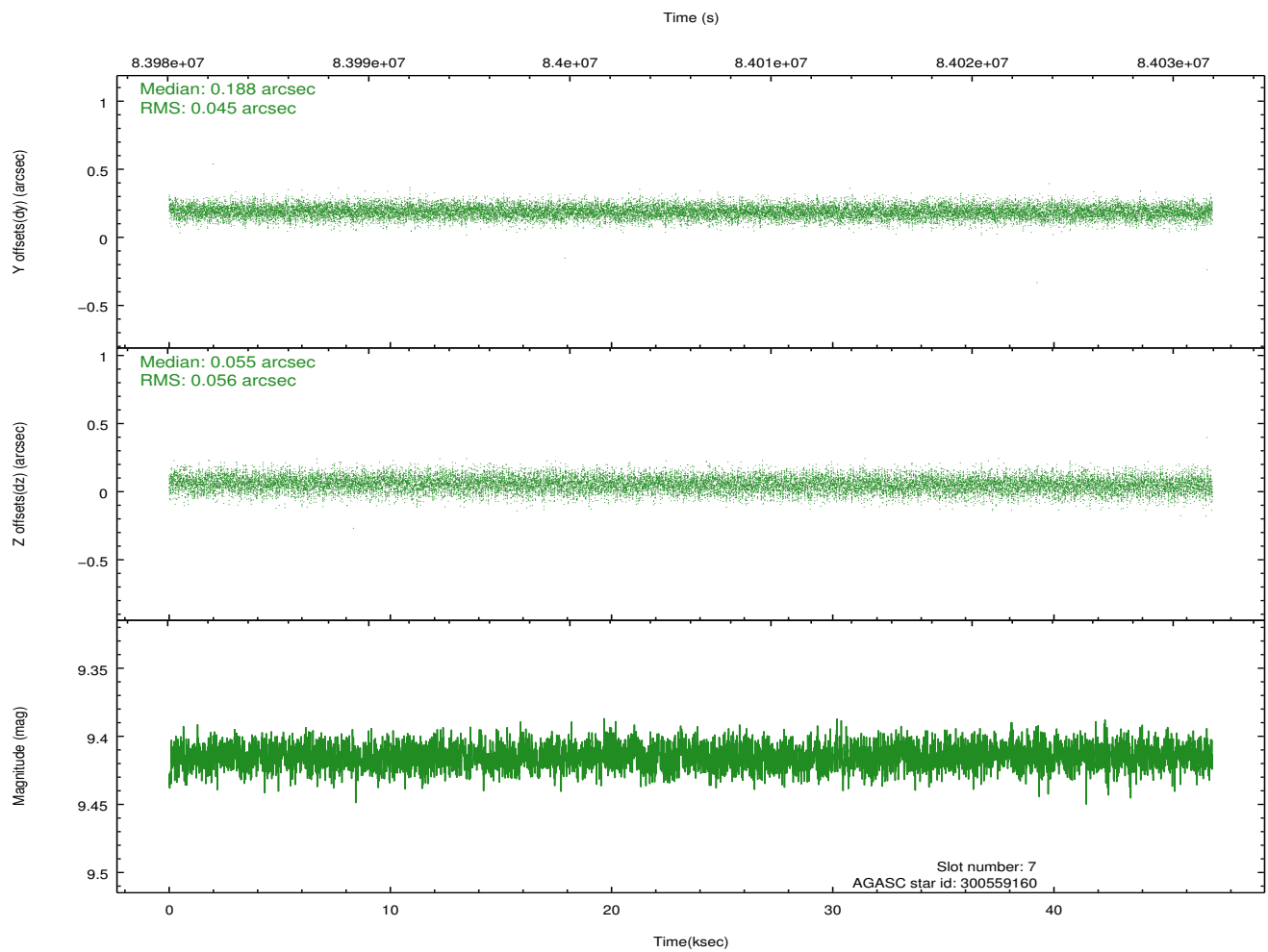
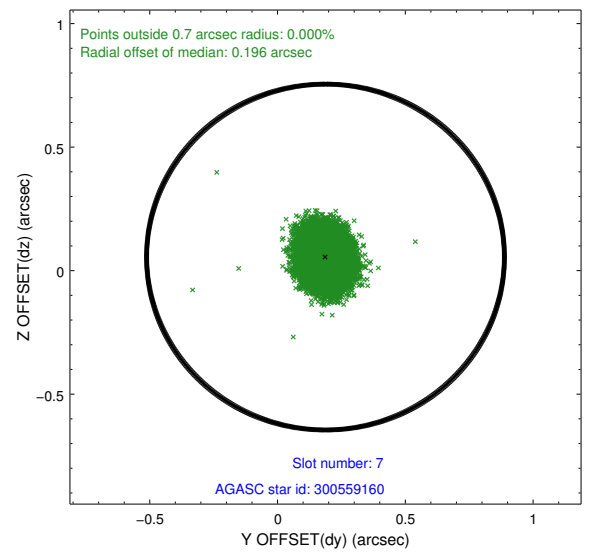
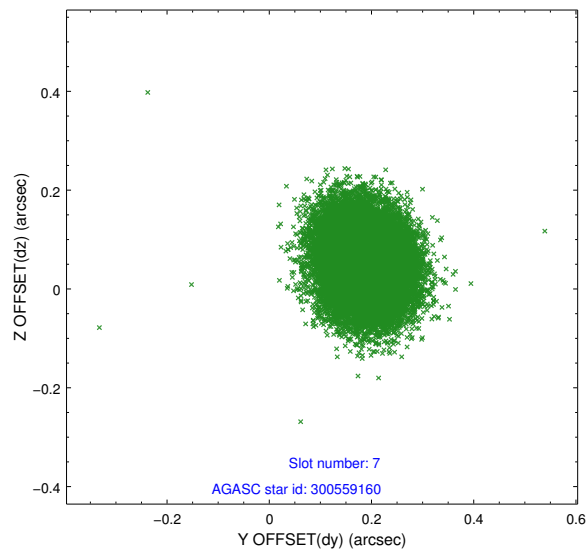
2.4.3 Slot 5



2.4.4 Slot 6

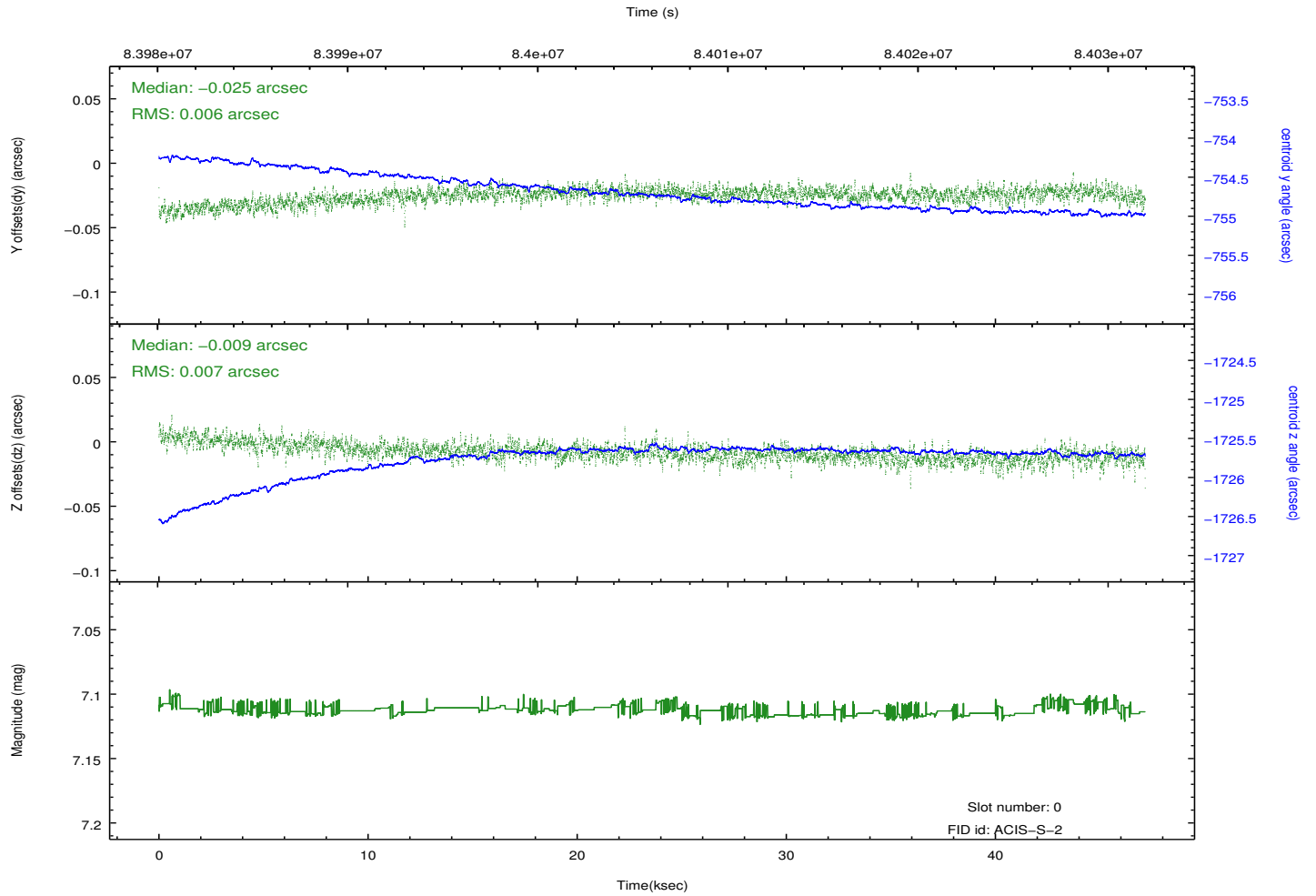
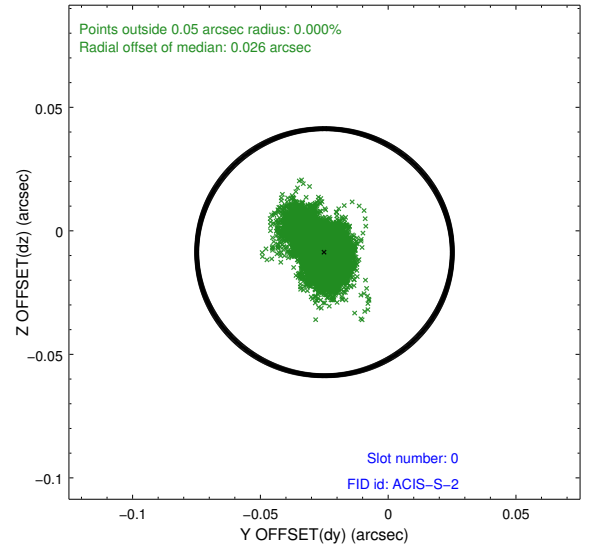
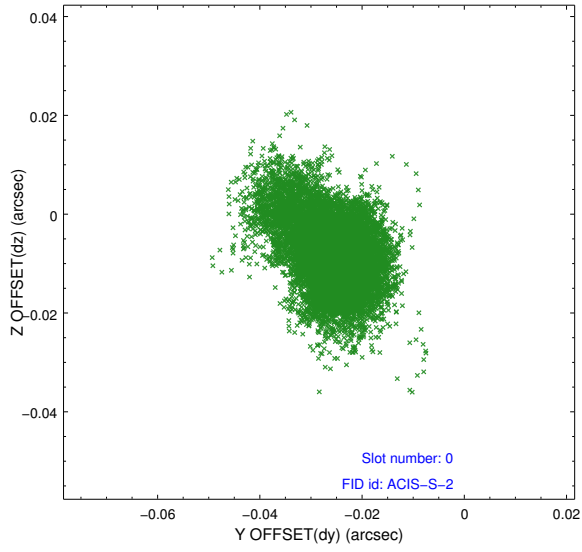


2.4.5 Slot 7

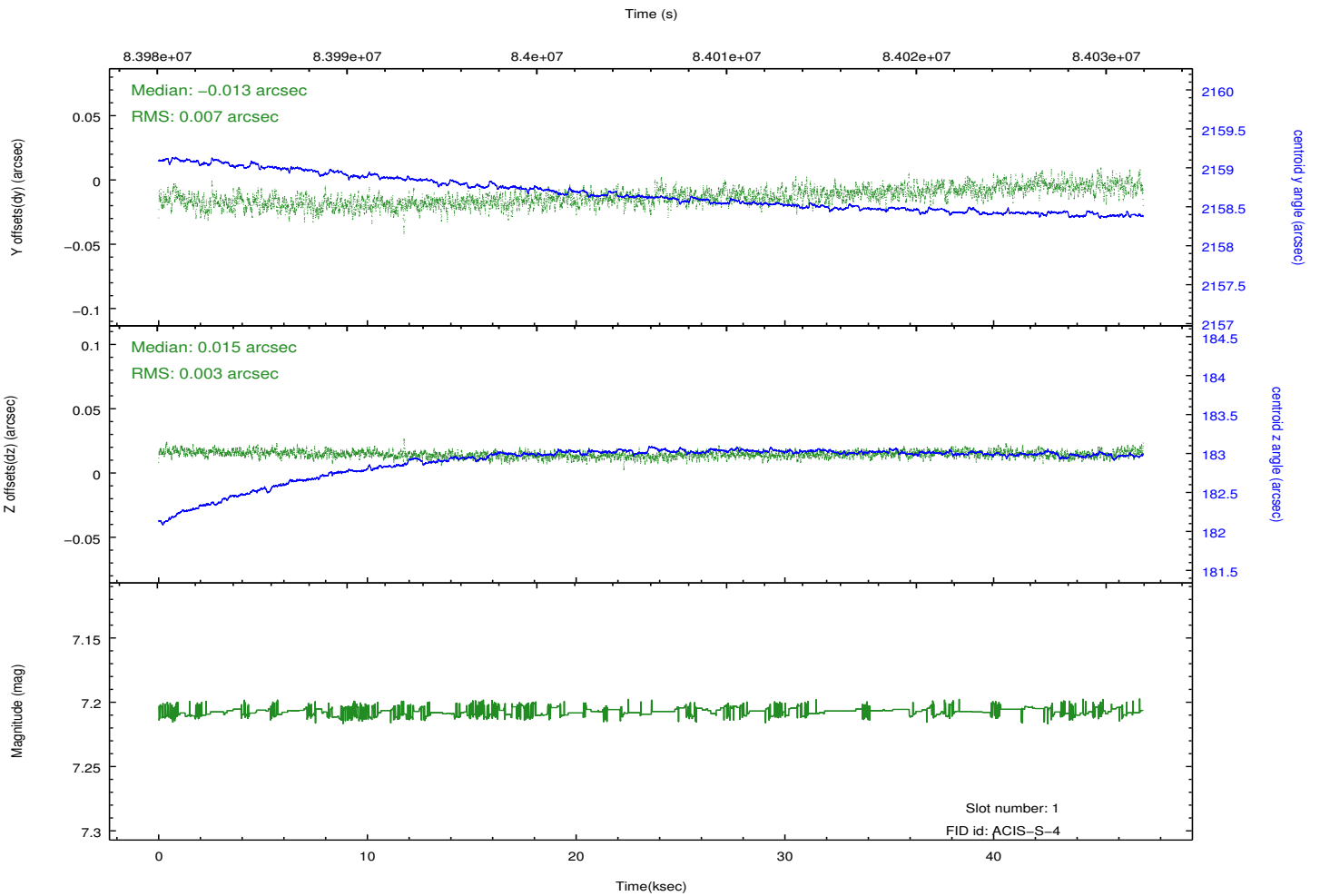
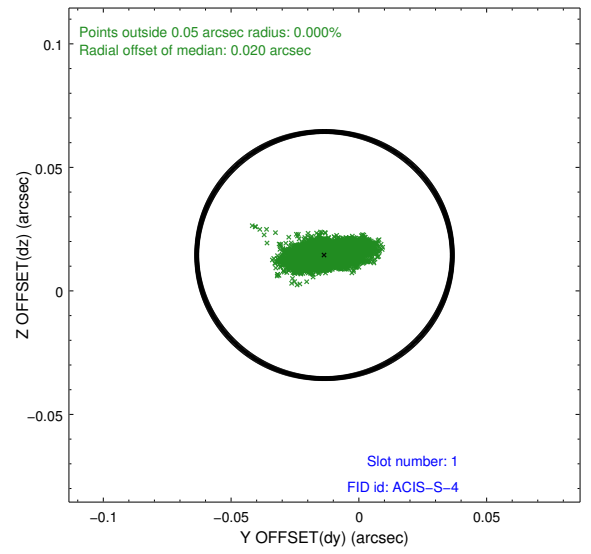
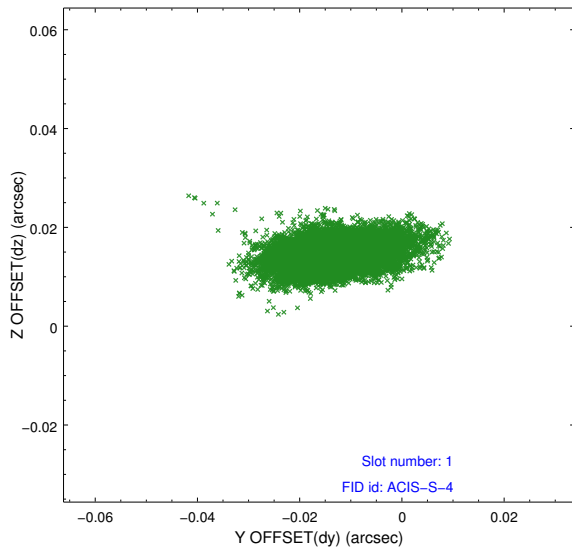


2.5 FID Slots

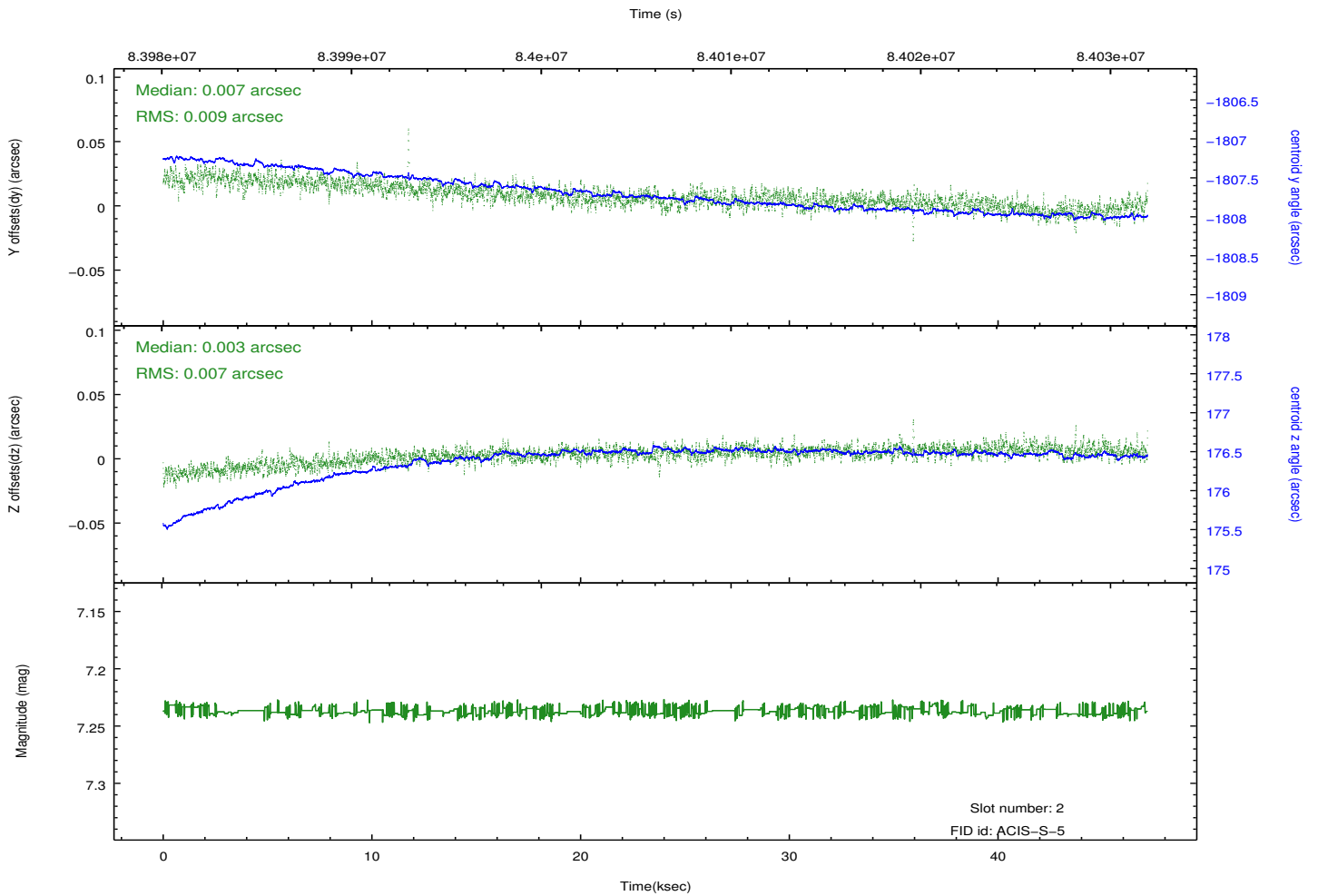
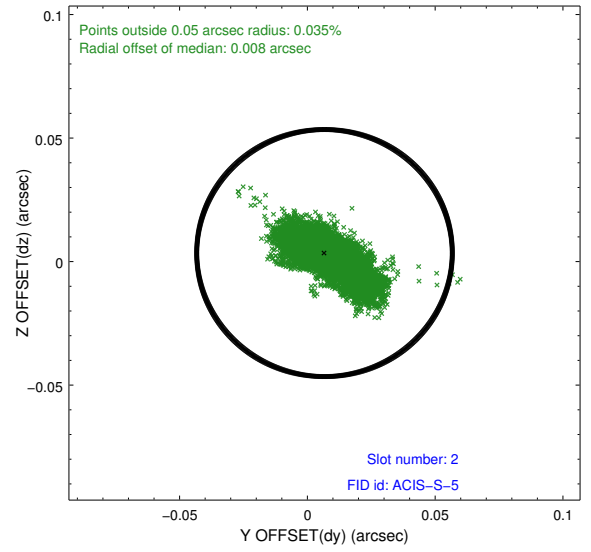
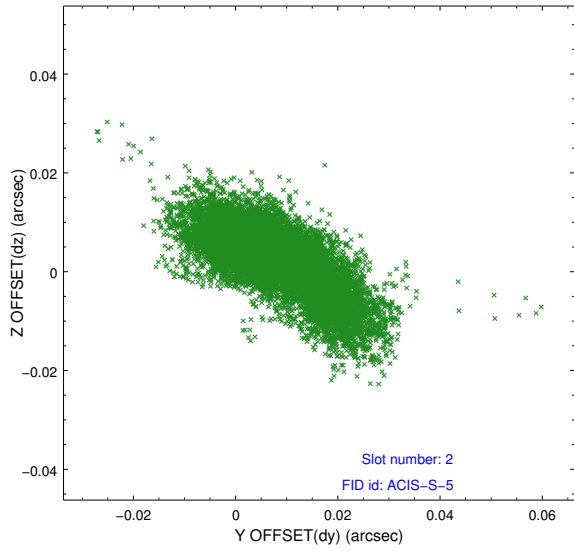
2.5.1 Slot 0



2.5.2 Slot 1



2.5.3 Slot 2



A Summary

A.1 Status

V&V Scientist	Jen Lauer
V&V Date (YYYY-MM-DD)	2012.09.07
V&V Edition	1
V&V Disposition and Status	OK
V&V Charge Time	46.854

A.2 Comments