

V&V Reference Report

L2 ASCDS Version : 8.4.4

Observation 7876 - L2 Version 2
Chandra X-Ray Center

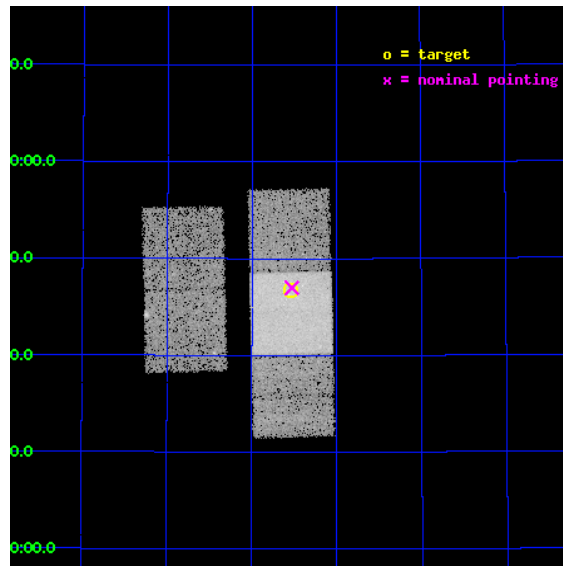
L2 Processing Date : May 10 2012

Contents

1	Front	2
2	OBI	3
2.1	OBI	3
2.1.1	Images	3
2.1.2	Bias	3
2.1.3	Parameters	4
2.1.4	Events	4
2.2	Compared Parameters	5
2.3	Aspect	6
2.4	Star Slots	9
2.4.1	Slot 3	9
2.4.2	Slot 4	10
2.4.3	Slot 5	11
2.4.4	Slot 6	12
2.4.5	Slot 7	13
2.5	FID Slots	14
2.5.1	Slot 0	14
2.5.2	Slot 1	15
2.5.3	Slot 2	16
A	Summary	17
A.1	Status	17
A.2	Comments	17

1 Front

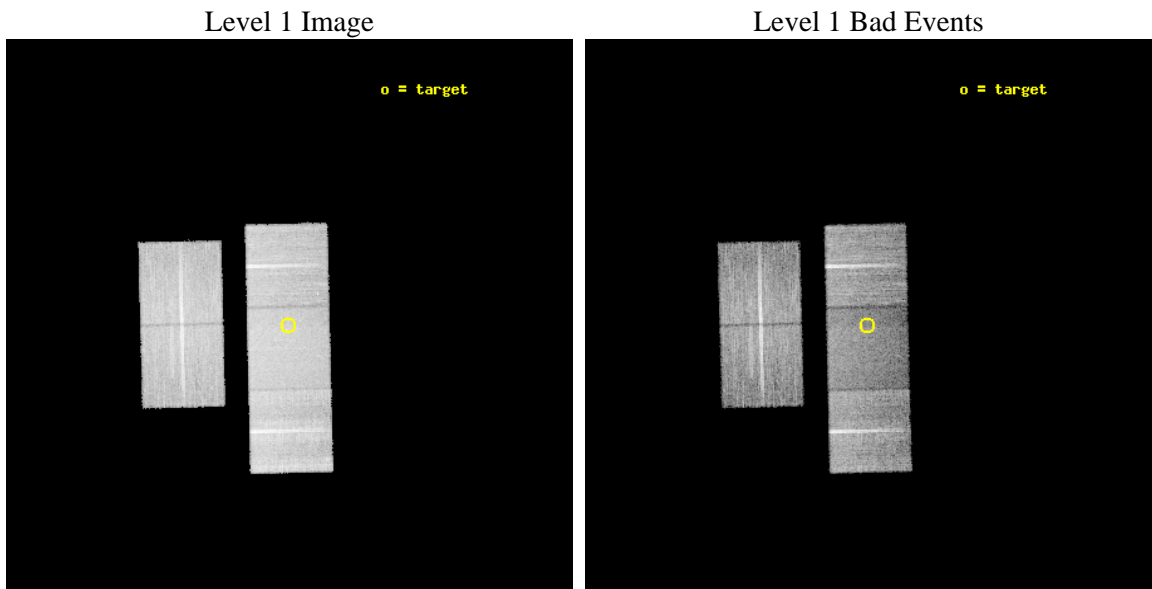
seq_num	701540	Sequence number
obs_id	7876	Observation id
title	Bent Jets in Brightest Cluster Galaxies	Proposal title
observer	Dr Nazirah Jetha	Principal investigator
object	Abell 2220	Source name
dtcycle	0	
cycle	P	events from which exps? Prim/Second/Both
ra_targ	249.886183	Observer's specified target RA [deg]
dec_targ	53.778881	Observer's specified target Dec [deg]
ra_nom	249.88197580322	Nominal RA [deg]
dec_nom	53.783092407462	Nominal Dec [deg]
roll_nom	88.660004722817	Nominal Roll [deg]
revision	2	Processing version of data
ontime	15146.600116491	Sum of GTIs [s]
livetime	14948.698635205	Livetime [s]
ontime2	15143.459146142	Sum of GTIs [s]
ontime3	15143.459126234	Sum of GTIs [s]
ontime6	15146.600116491	Sum of GTIs [s]
ontime7	15146.600116491	Sum of GTIs [s]
ontime8	15143.459126234	Sum of GTIs [s]
l2events	106045	Number of level 2 events



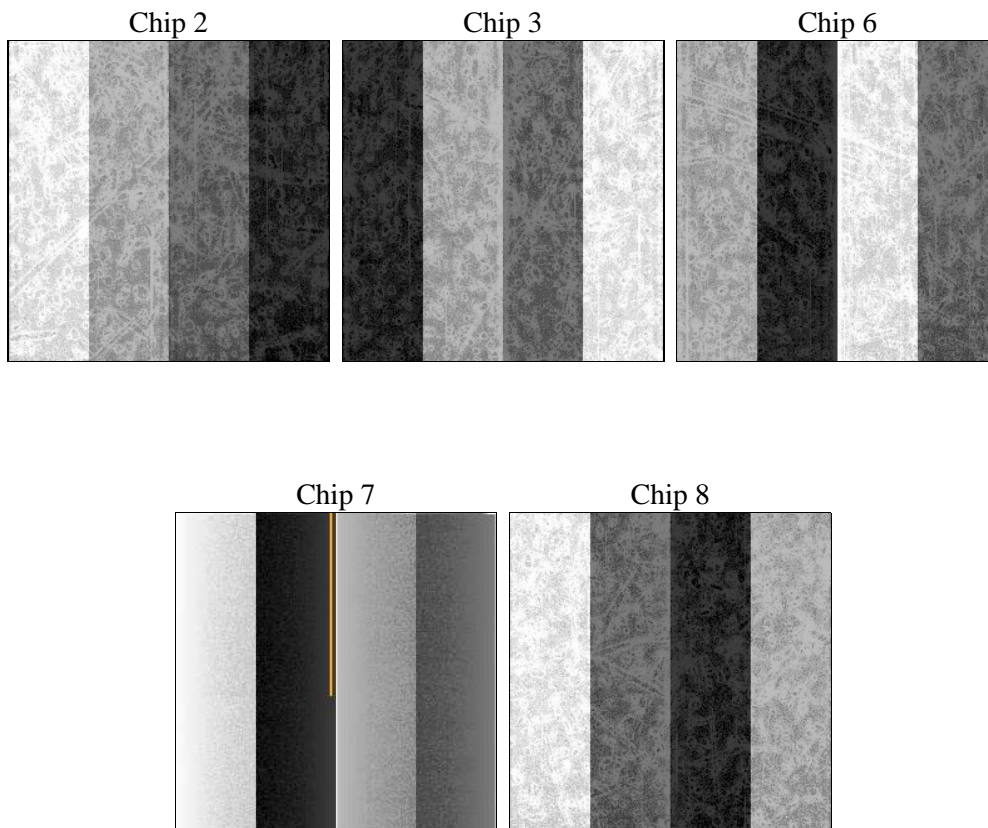
2 OBI

2.1 OBI

2.1.1 Images



2.1.2 Bias



2.1.3 Parameters

obi_num	1	Obi number	sched_exp_time	15000.000000	[s] Scheduled observation exposure time
ascdsver	8.4.4	Processing system revision	ontime	15146.600116491	Sum of GTIs [s]
caldbver	4.4.9	 	ontime2	15143.459146142	Sum of GTIs [s]
date	2012-05-10T22:00:49	Date and time of file creation	ontime3	15143.459126234	Sum of GTIs [s]
revision	2	Processing version of data	ontime6	15146.600116491	Sum of GTIs [s]
			ontime7	15146.600116491	Sum of GTIs [s]
			ontime8	15143.459126234	Sum of GTIs [s]
			l1events	674473	Number of level 1 events

2.1.4 Events

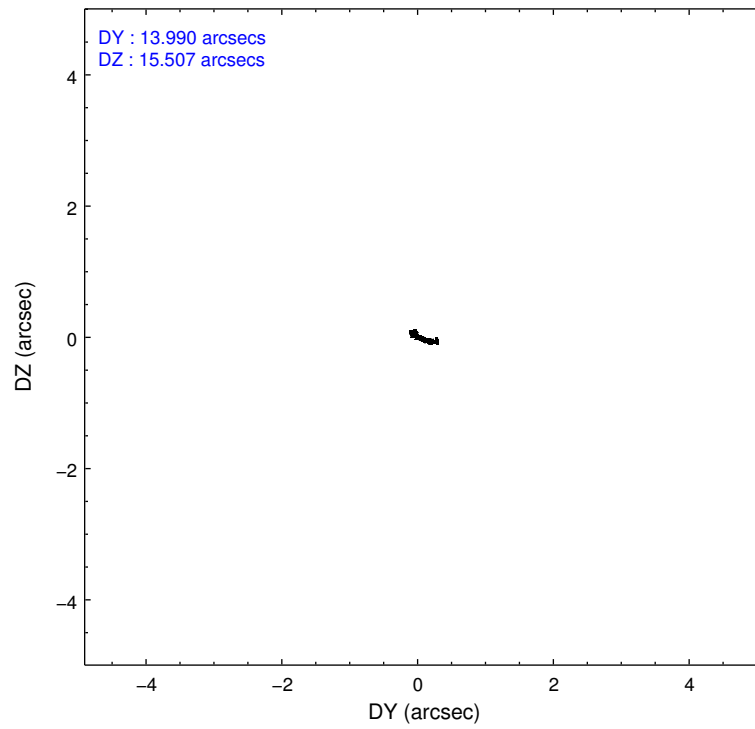
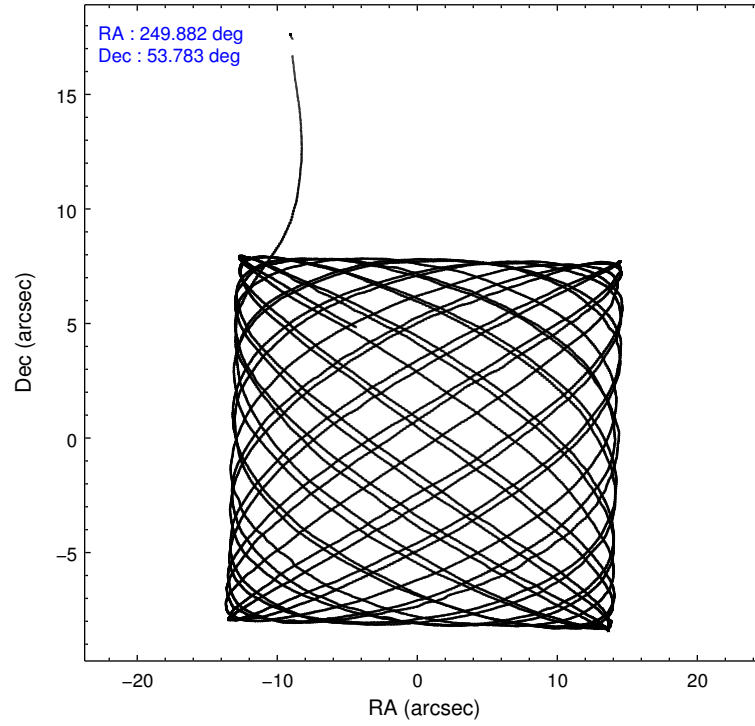
	ccd 2	ccd 3	ccd 6	ccd 7	ccd 8
level 1 events	127380	120659	126702	142241	157491
rejected events	115546	109121	113317	78492	118744
rejected %	90%	90%	89%	55%	75%

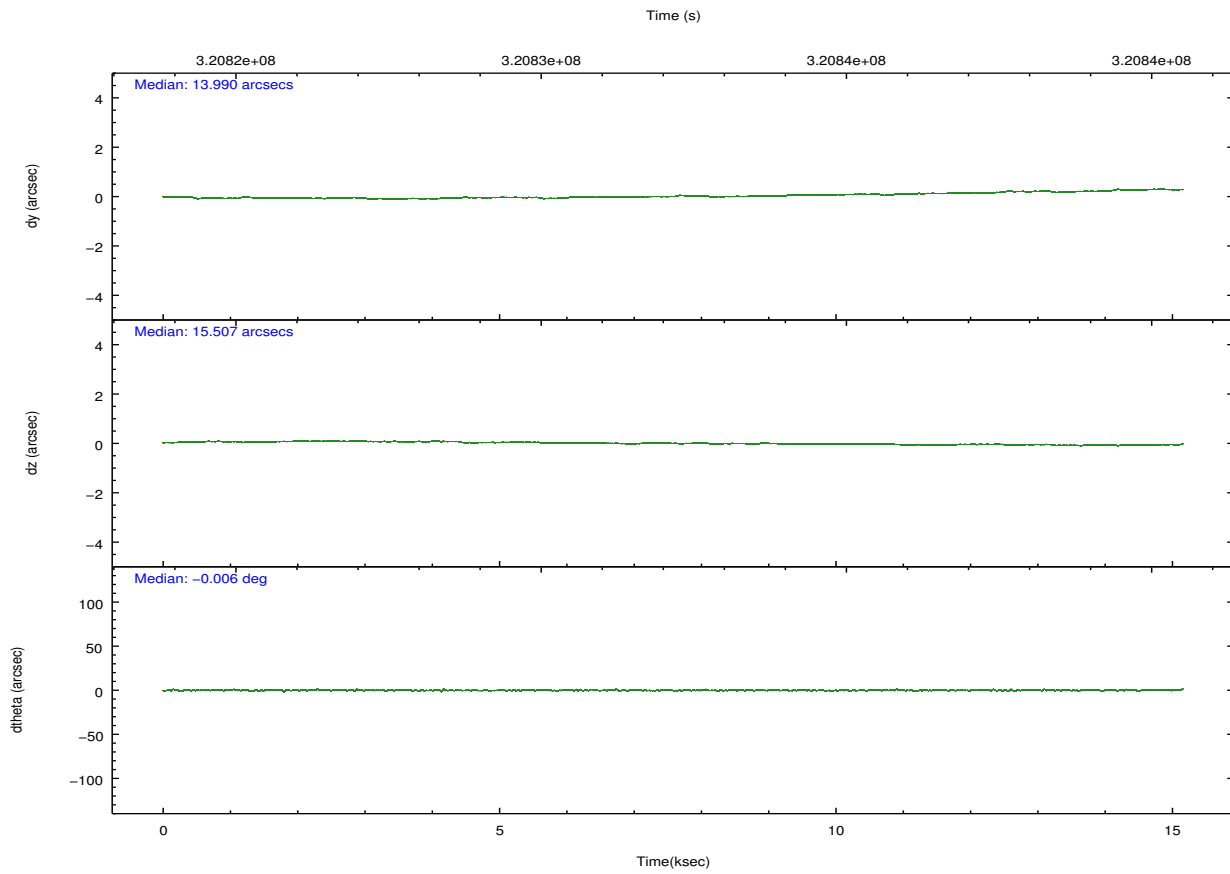
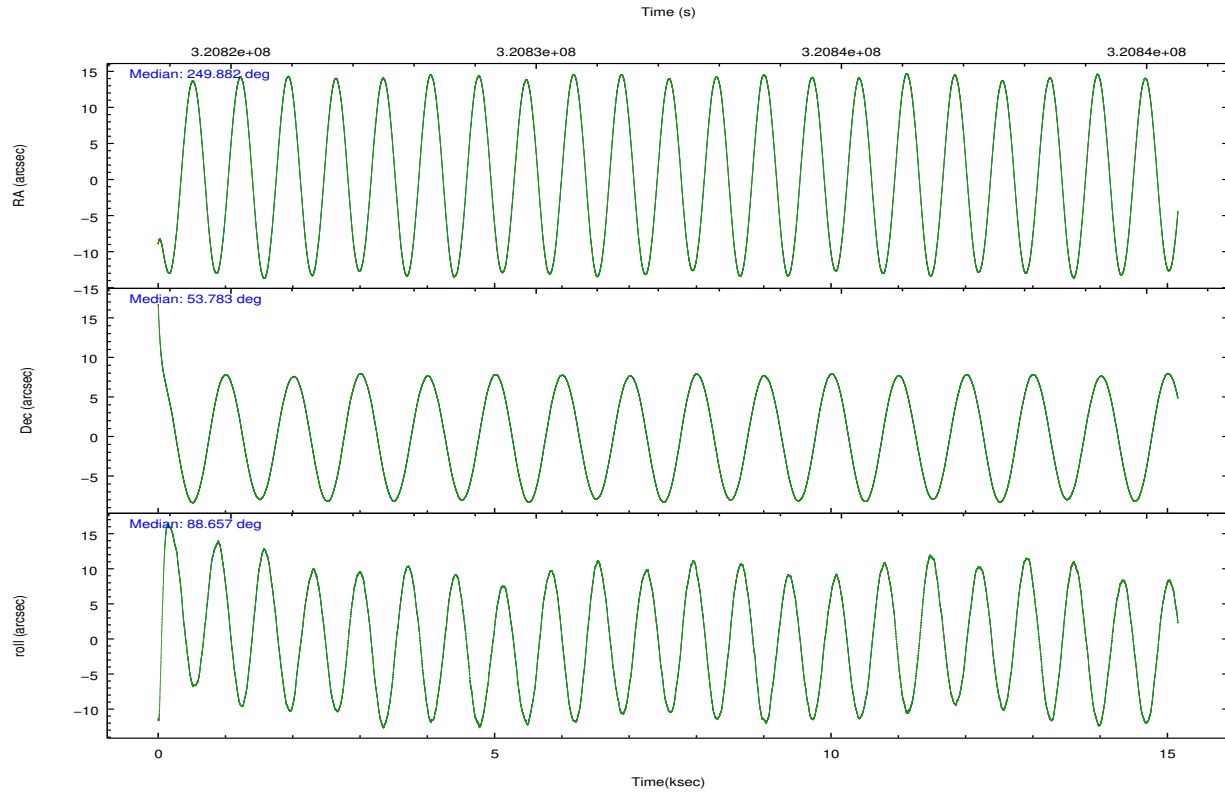
	ccd 2	ccd 3	ccd 6	ccd 7	ccd 8
grade 0 events	4358	4287	5144	6587	11998
	3%	3%	4%	4%	7%
grade 1 events	61	58	59	172	121
	0%	0%	0%	0%	0%
grade 2 events	2817	2554	2959	13281	8923
	2%	2%	2%	9%	5%
grade 3 events	1318	1307	1392	6033	4103
	1%	1%	1%	4%	2%
grade 4 events	1340	1277	1411	5885	3871
	1%	1%	1%	4%	2%
grade 5 events	4040	4922	4995	14570	7102
	3%	4%	3%	10%	4%
grade 6 events	2281	2384	2788	33475	10865
	1%	1%	2%	23%	6%
grade 7 events	111165	103870	107954	62238	110508
	87%	86%	85%	43%	70%

2.2 Compared Parameters

Parameter	Planned	Actual	Parameter	Planned	Actual
Instrument	ACIS	ACIS	Obspar format version number	7	7
Detector	ACIS-23678	ACIS-23678	Obspar file type	PREDICTED	ACTUAL
Grating	NONE	NONE	Obspar update status	NONE	UPDATED
Data mode	VFAINT	VFAINT	CCD I0 on	N	N
Observation mode	POINTING	POINTING	CCD I1 on	N	N
[deg] Pointing RA	249.904769	249.881975803223	CCD I2 on	O1	Y
[deg] Pointing Dec	53.759242	53.78309240746196	CCD I3 on	O2	Y
[deg] Pointing Roll	88.485006	88.66000472281689	CCD S0 on	N	N
[mm] SIM focus pos	-0.684267	-0.6828225247311905	CCD S1 on	N	N
[mm] SIM defocus	0	0.001444936568705701	CCD S2 on	O3	Y
[mm] SIM translation stage pos	-190.132523	-190.1400660498719	CCD S3 on	Y	Y
[mm] SIM translation stage offset	0	0.00754346686406393	CCD S4 on	O4	Y
[s] Observation start time (MET)	320824731.184000	320823562.347	CCD S5 on	N	N
Observation start date	2008-03-02T05:57:46	2008-03-02T05:39:22	Number of optional ACIS chips dropped	0	0
[s] Observation end time (MET)	320839731.184000	320840388.74781	On-chip summing requested	N	N
Observation end date	2008-03-02T10:07:46	2008-03-02T10:19:48	Subarray requested	NONE	NONE
Read mode	TIMED	TIMED	Alternating exposures requested	N	N
			[s] Primary exposure time	0.000000	3.1

2.3 Aspect



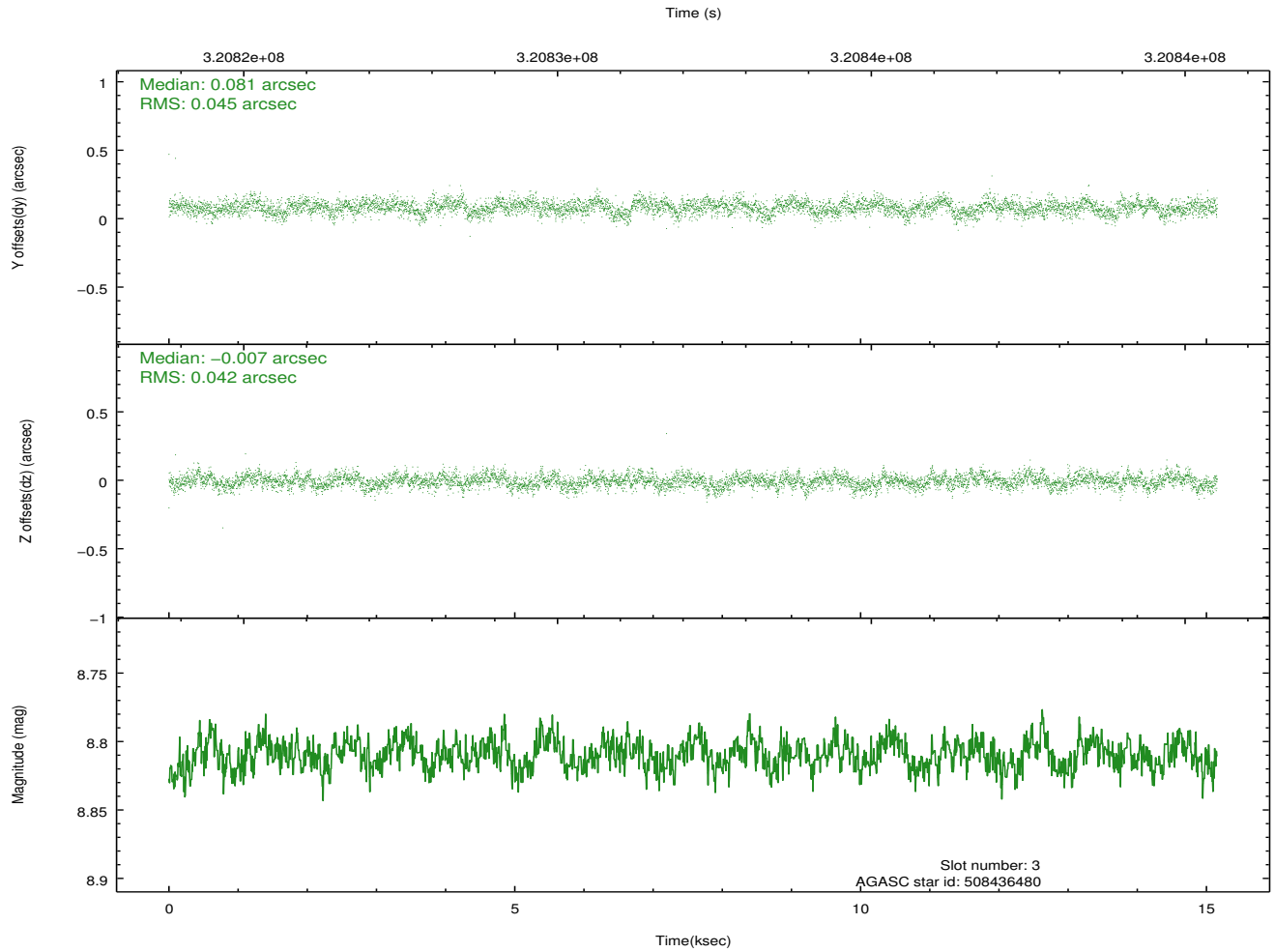
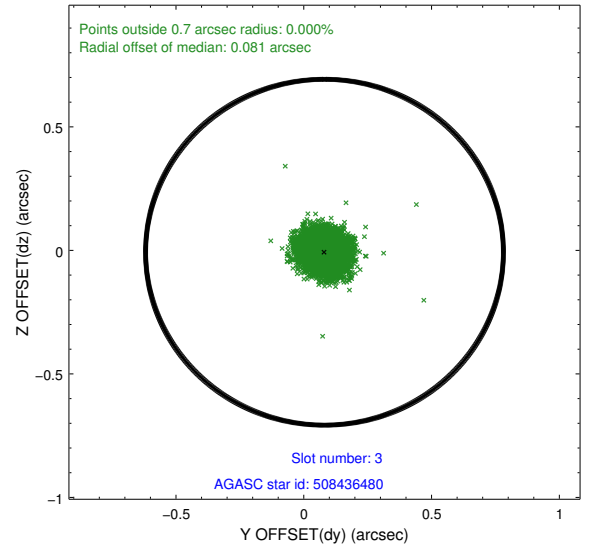
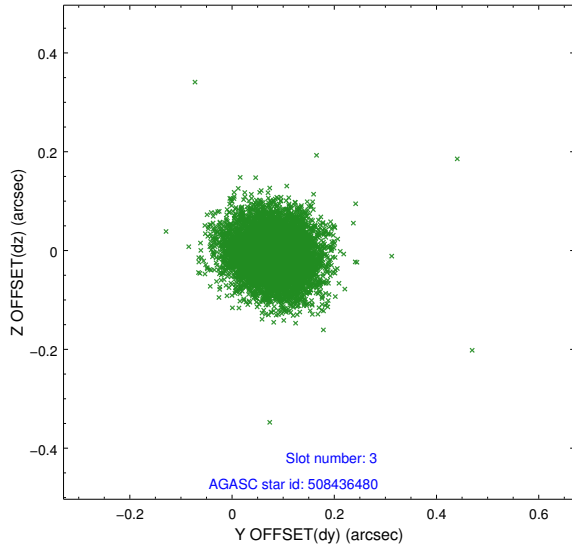


Slot Statistics

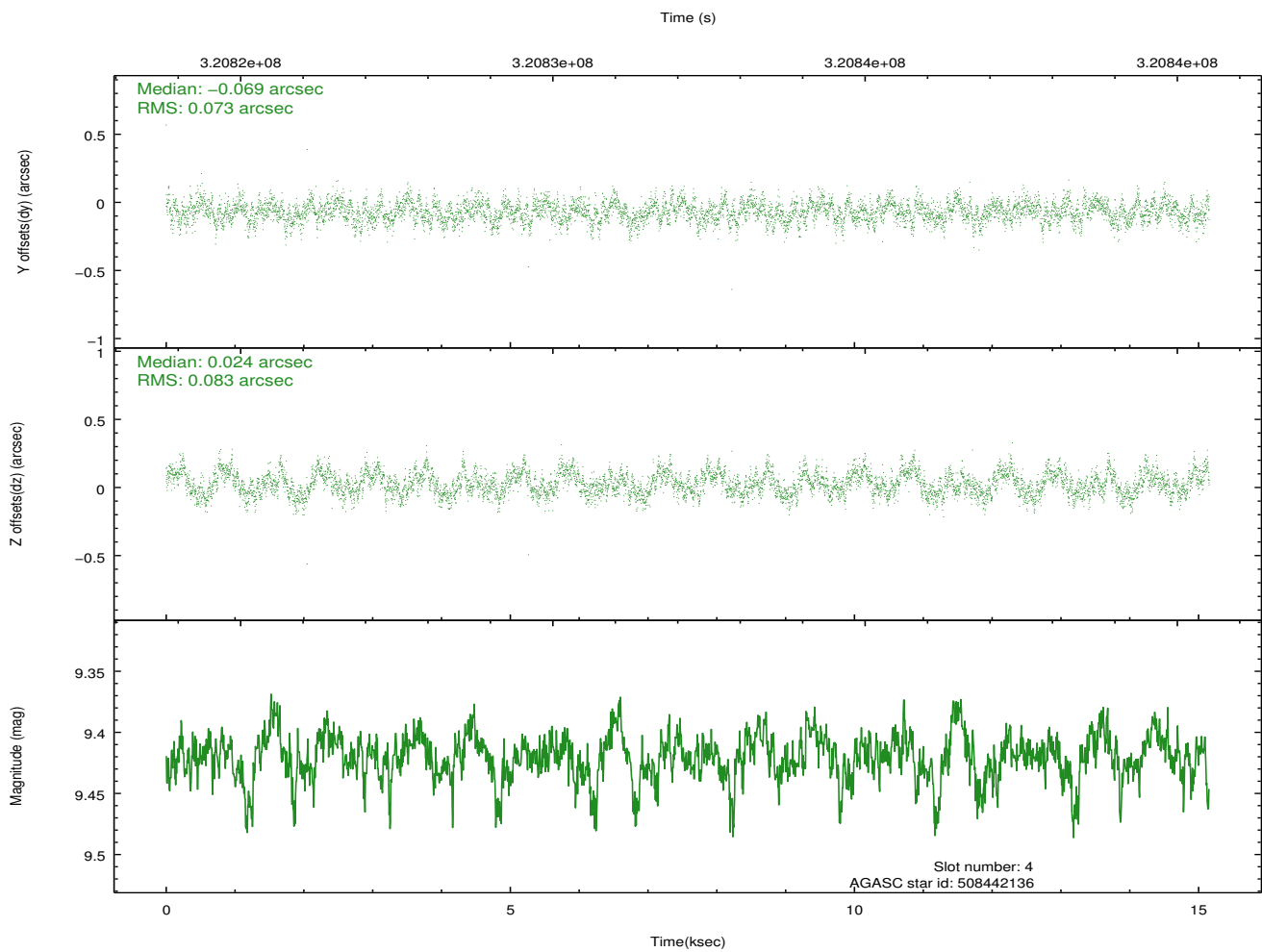
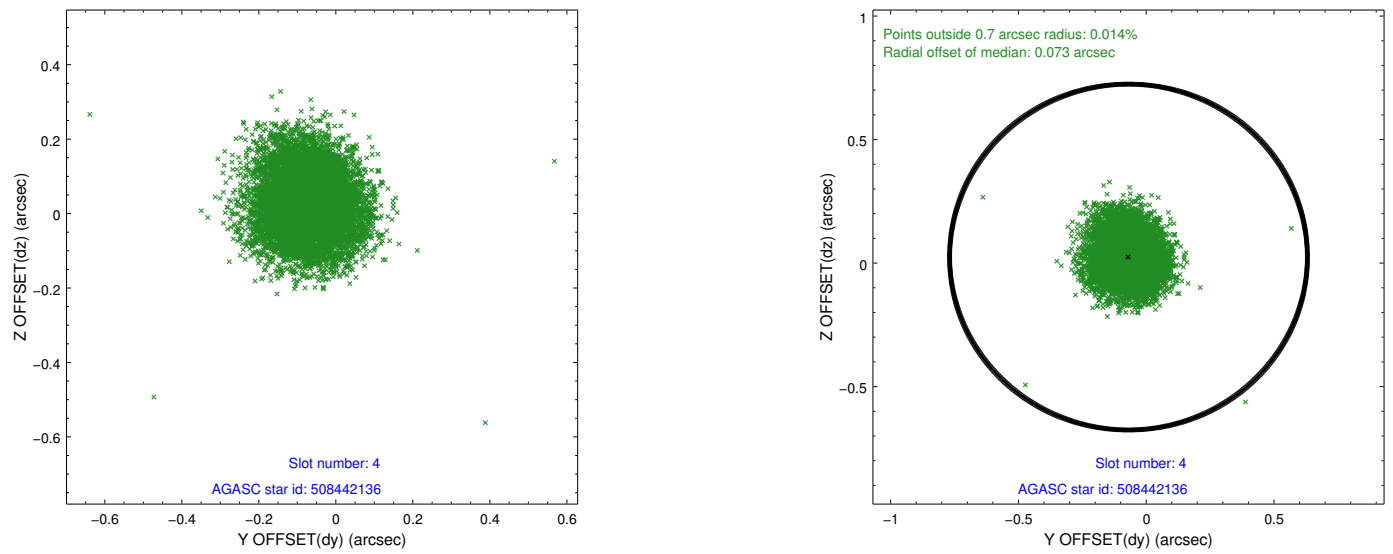
slot	status	id	mag	n_pts	med_dy	med_dz	dr1	dr2	ra	dec	mean_y	mean_z
0	FID	ACIS-S-1	7.18	3696	0.078	-0.079	0.007	0.013	0.000000	0.000000	929.15	-1732.61
1	FID	ACIS-S-5	7.22	3697	-0.161	0.036	0.006	0.011	0.000000	0.000000	-1819.93	164.74
2	FID	ACIS-S-6	7.32	3697	0.062	0.054	0.007	0.012	0.000000	0.000000	394.36	809.06
3	GUIDE	508436480	8.81	7391	0.081	-0.007	0.065	0.106	249.760792	53.146937	-2211.36	252.43
4	GUIDE	508442136	9.42	7376	-0.069	0.024	0.118	0.187	250.394353	54.240145	1761.19	-983.55
5	GUIDE	508445160	9.28	7385	-0.193	-0.149	0.096	0.152	249.450875	54.079473	1130.17	988.67
6	GUIDE	508446832	9.03	7387	0.070	-0.009	0.077	0.124	249.190096	53.496641	-977.52	1505.44
7	GUIDE	508448008	8.96	7385	0.113	0.139	0.078	0.130	250.573060	53.621979	-449.49	-1438.94

2.4 Star Slots

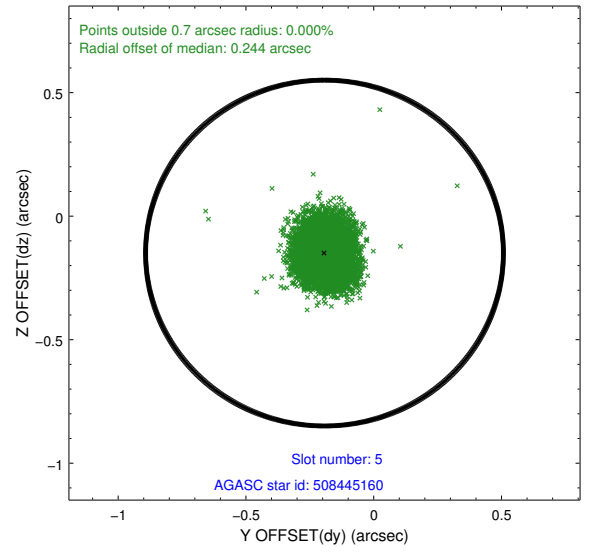
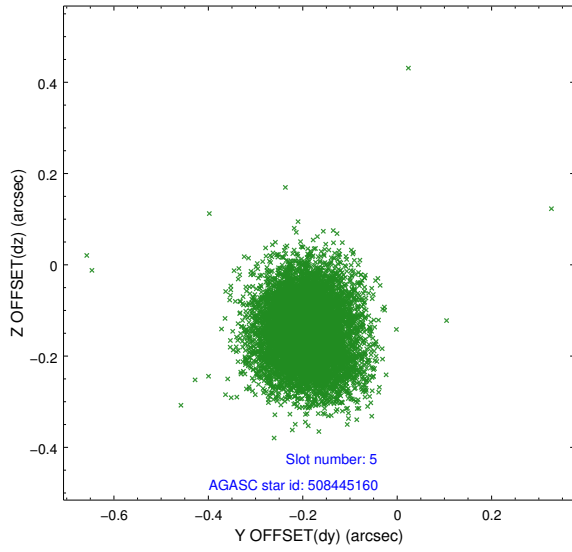
2.4.1 Slot 3



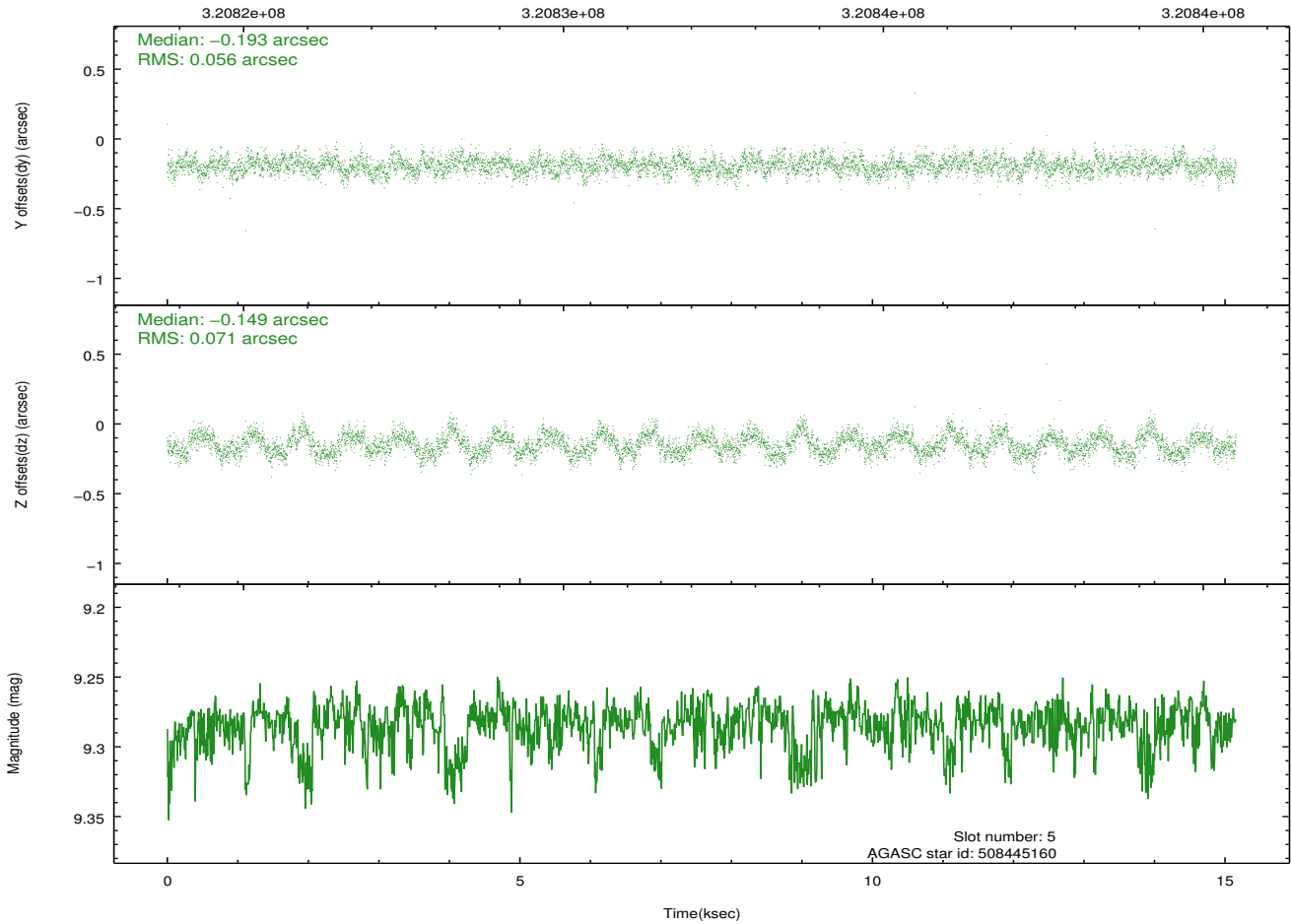
2.4.2 Slot 4



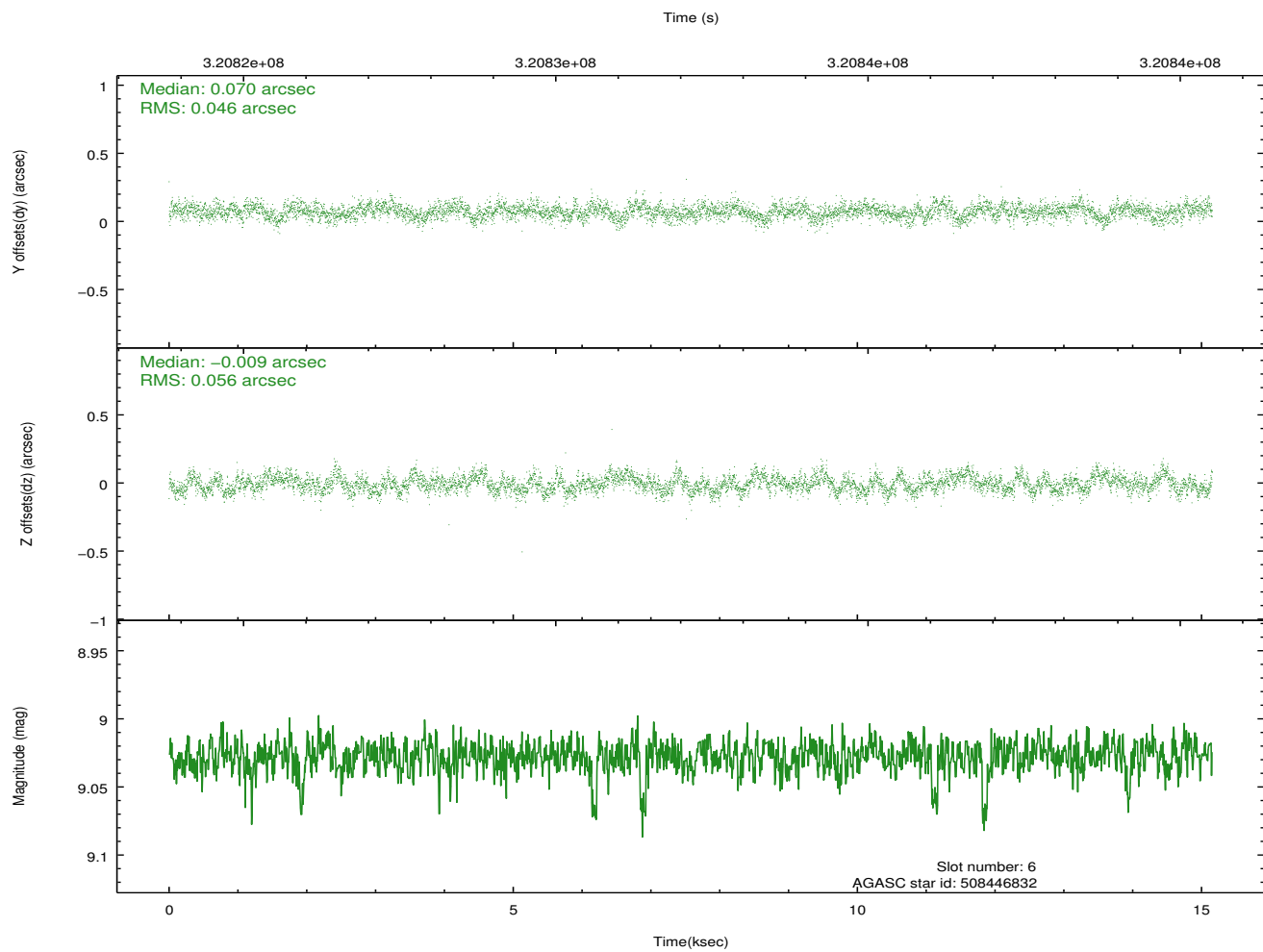
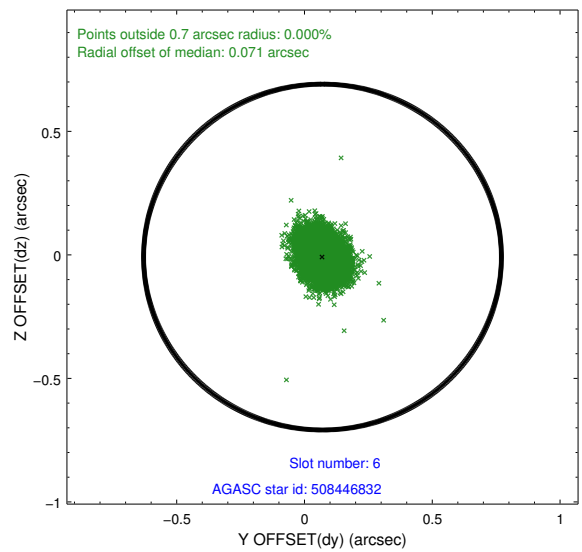
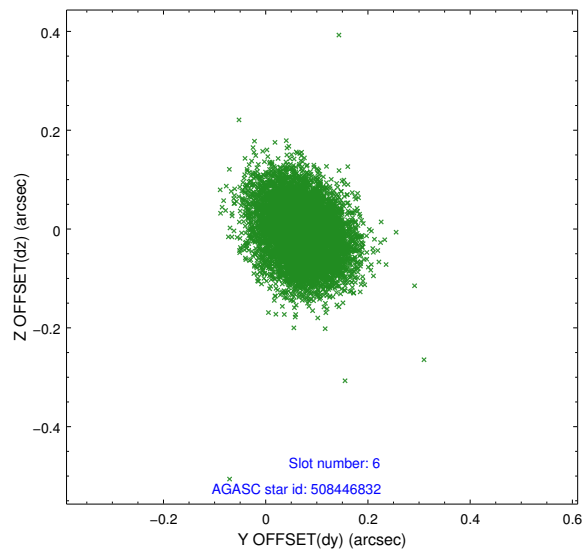
2.4.3 Slot 5



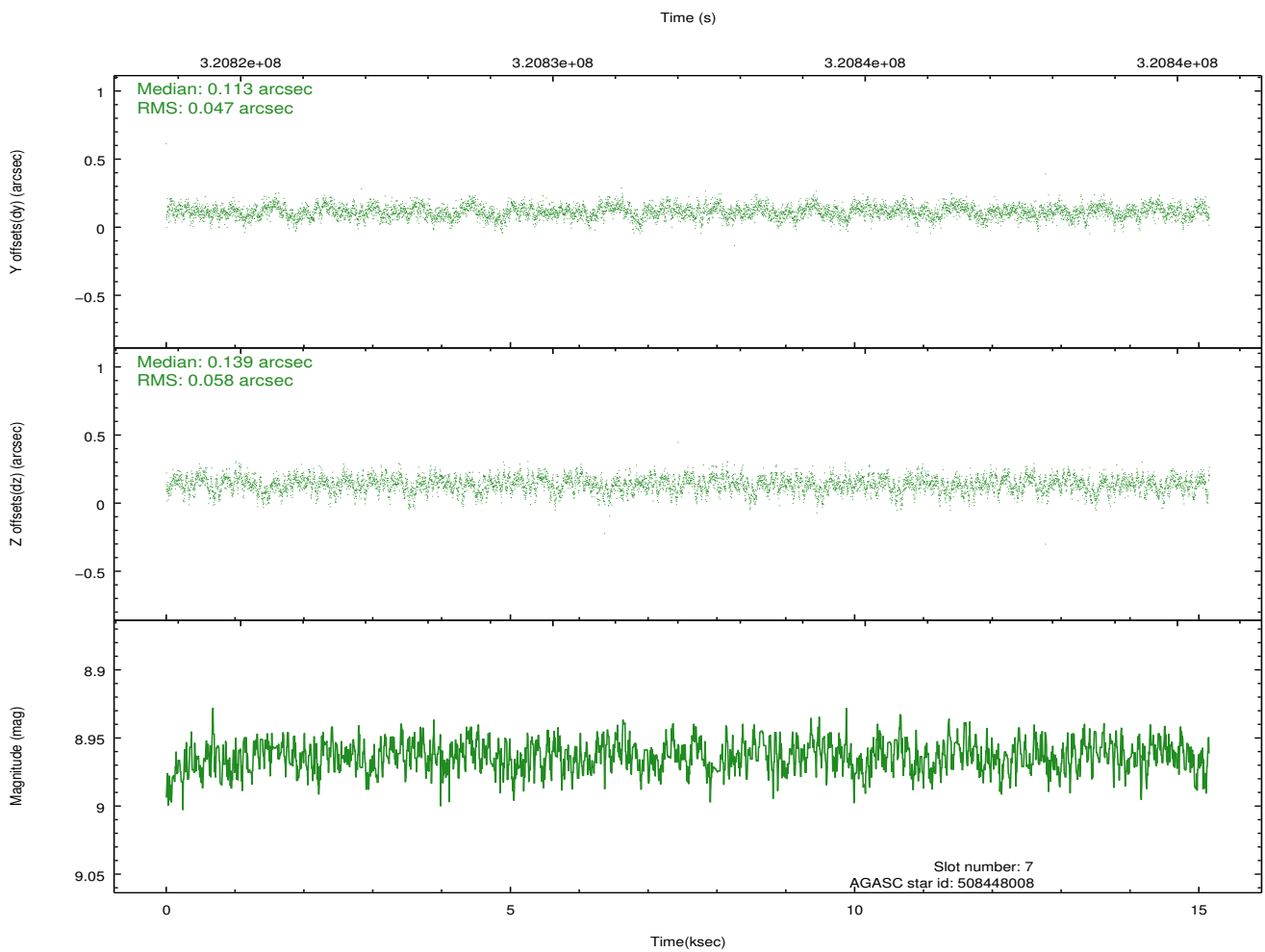
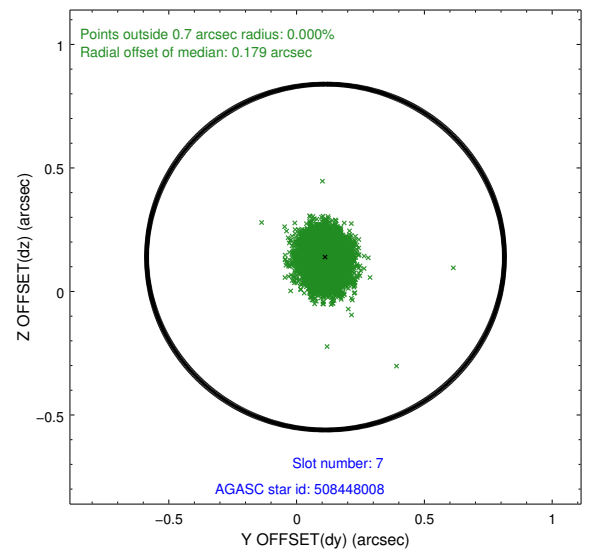
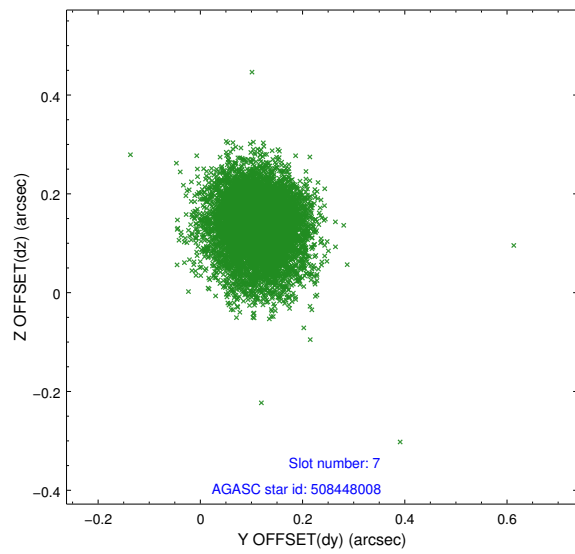
Time (s)



2.4.4 Slot 6

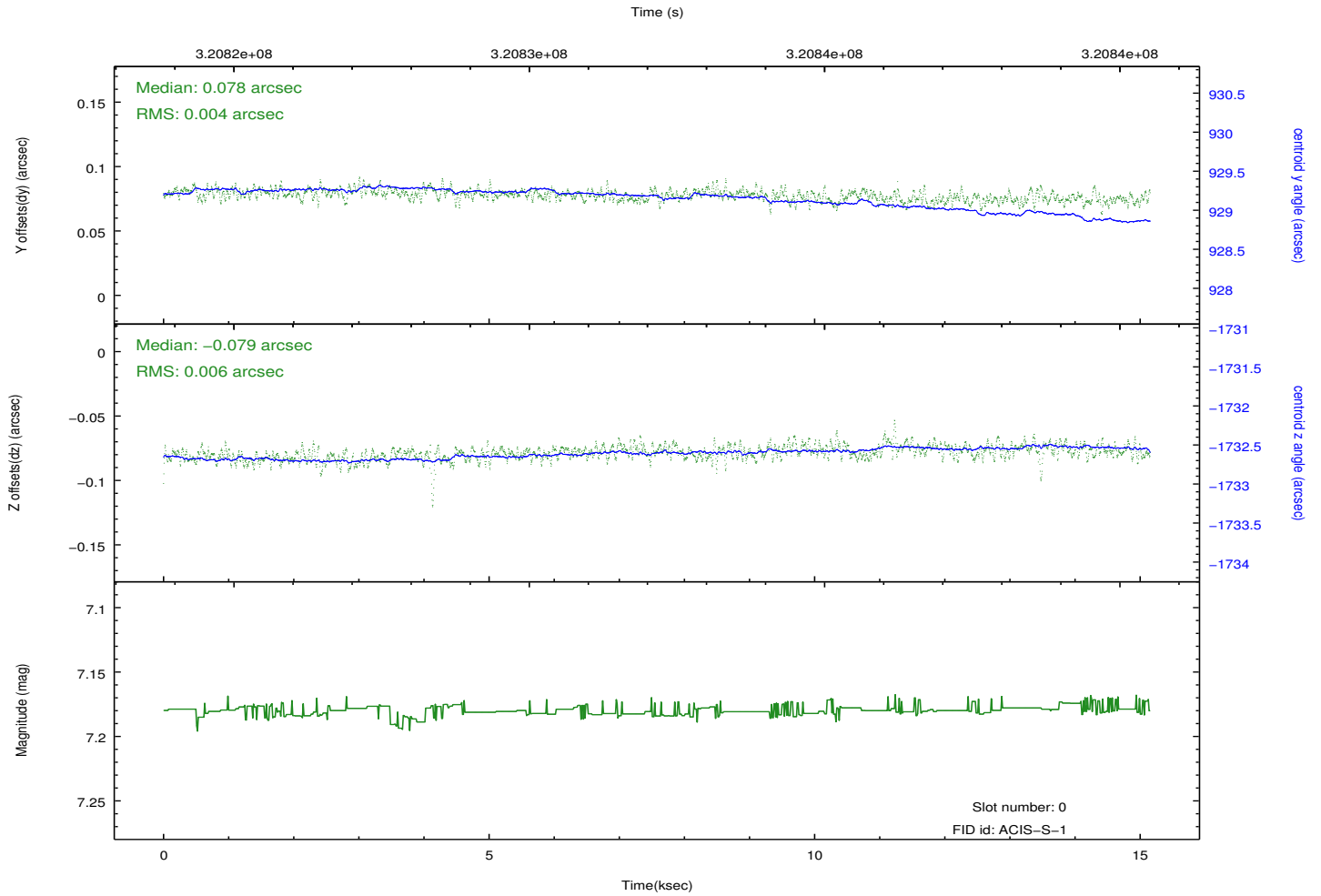
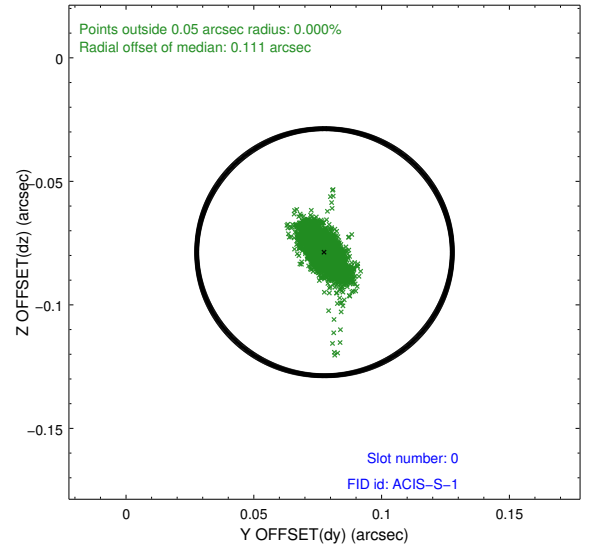
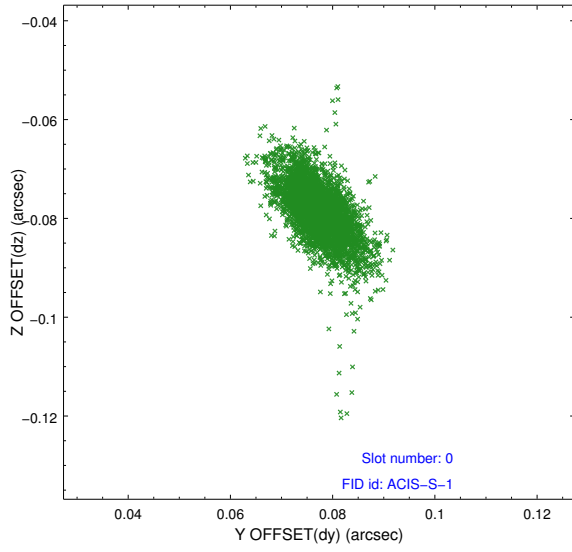


2.4.5 Slot 7

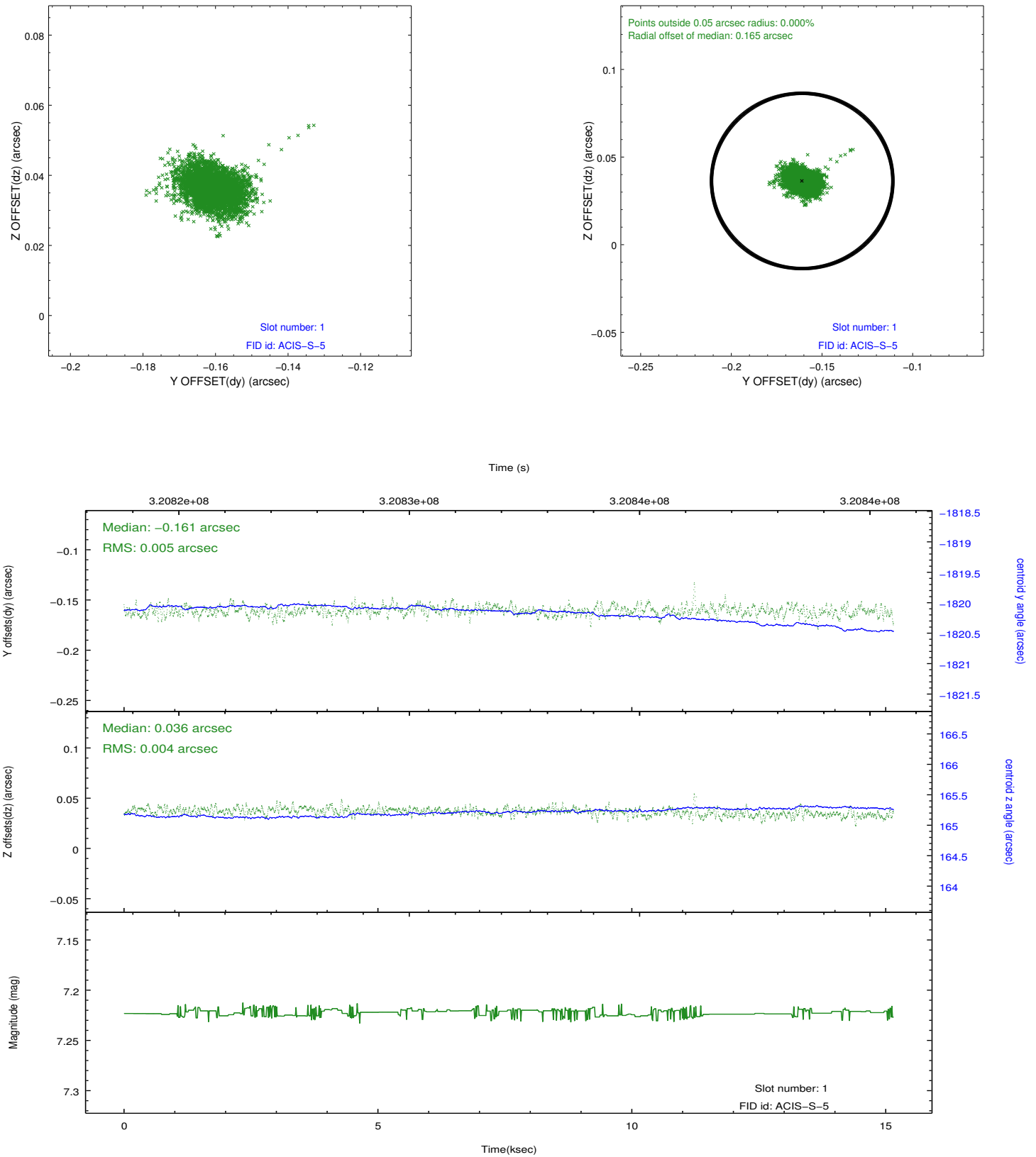


2.5 FID Slots

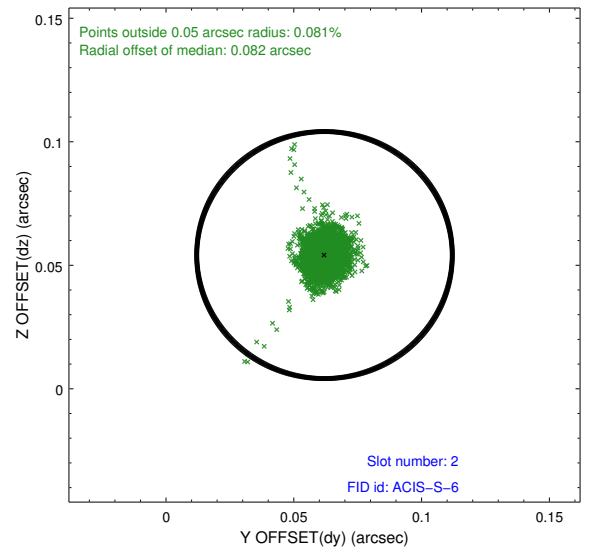
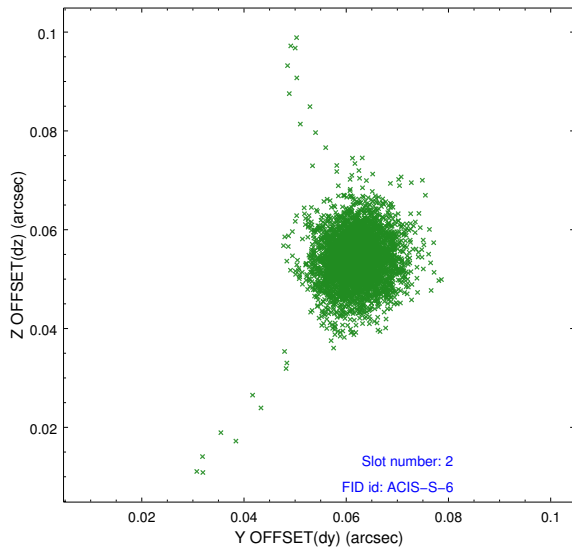
2.5.1 Slot 0



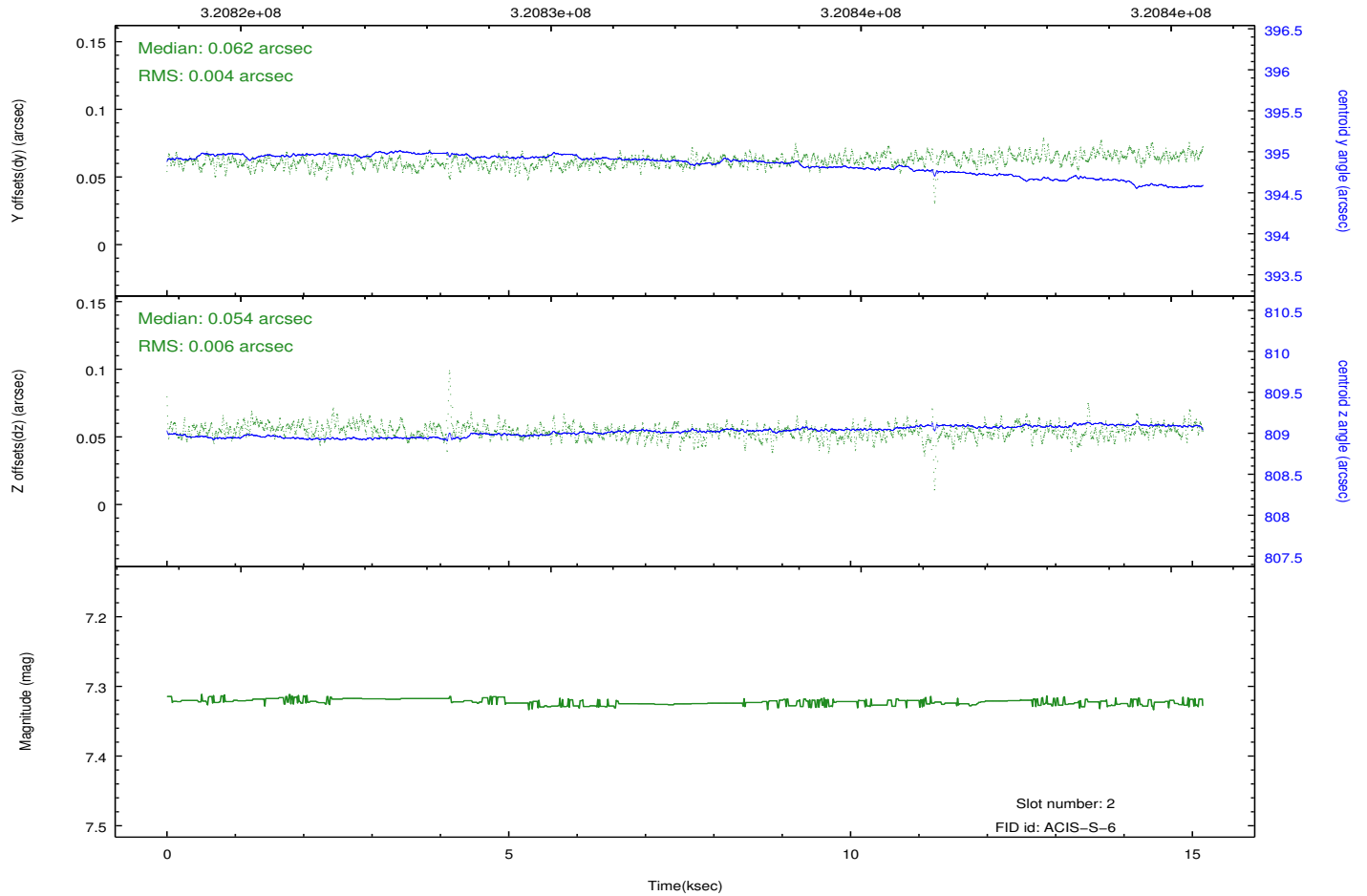
2.5.2 Slot 1



2.5.3 Slot 2



Time (s)



A Summary

A.1 Status

V&V Scientist	Jen Lauer
V&V Date (YYYY-MM-DD)	2012.05.14
V&V Edition	1
V&V Disposition and Status	OK
V&V Charge Time	15.1466001

A.2 Comments