

# V&V Reference Report

## L2 ASCDS Version : 8.4.4

Observation 7906 - L2 Version 2  
Chandra X-Ray Center

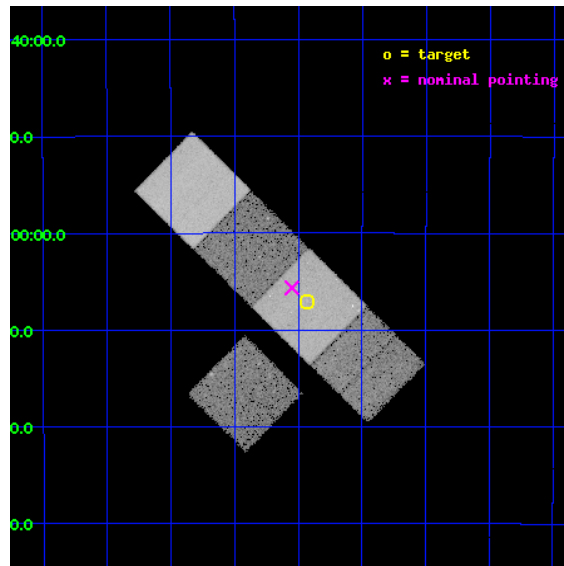
L2 Processing Date : Apr 30 2012

## Contents

<b>1</b>	<b>Front</b>	<b>2</b>
<b>2</b>	<b>OBI</b>	<b>3</b>
2.1	OBI . . . . .	3
2.1.1	Images . . . . .	3
2.1.2	Bias . . . . .	3
2.1.3	Parameters . . . . .	4
2.1.4	Events . . . . .	4
2.2	Compared Parameters . . . . .	5
2.3	Aspect . . . . .	6
2.4	Star Slots . . . . .	9
2.4.1	Slot 3 . . . . .	9
2.4.2	Slot 4 . . . . .	10
2.4.3	Slot 5 . . . . .	11
2.4.4	Slot 6 . . . . .	12
2.4.5	Slot 7 . . . . .	13
2.5	FID Slots . . . . .	14
2.5.1	Slot 0 . . . . .	14
2.5.2	Slot 1 . . . . .	15
2.5.3	Slot 2 . . . . .	16
<b>A</b>	<b>Summary</b>	<b>17</b>
A.1	Status . . . . .	17
A.2	Comments . . . . .	17

# 1 Front

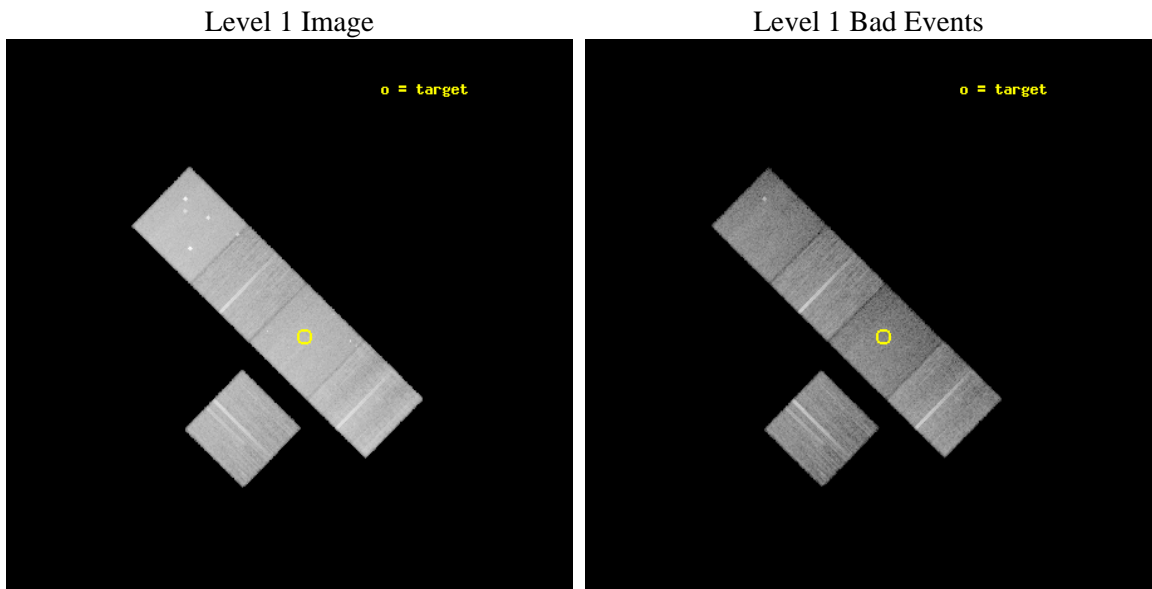
seq_num	800624	Sequence number
obs_id	7906	Observation id
title	IGM in galaxy groups with dominant elliptical galaxy; optically selected fossils	Proposal title
observer	Dr Habib Khosroshahi	Principal investigator
object	Group ID 1635	Source name
dtcycle	0	&#160
cycle	P	events from which exps? Prim/Second/Both
ra_targ	4.1075	Observer's specified target RA [deg]
dec_targ	-27.118056	Observer's specified target Dec [deg]
ra_nom	4.1375231558842	Nominal RA [deg]
dec_nom	-27.094207366673	Nominal Dec [deg]
roll_nom	44.456751874838	Nominal Roll [deg]
revision	2	Processing version of data
ontime	20137.600154877	Sum of GTIs [s]
livetime	19874.487583768	Livetime [s]
ontime3	20134.459194422	Sum of GTIs [s]
ontime5	20137.600154877	Sum of GTIs [s]
ontime6	20134.459154665	Sum of GTIs [s]
ontime7	20137.600154877	Sum of GTIs [s]
ontime8	20134.459144652	Sum of GTIs [s]
l2events	231539	Number of level 2 events



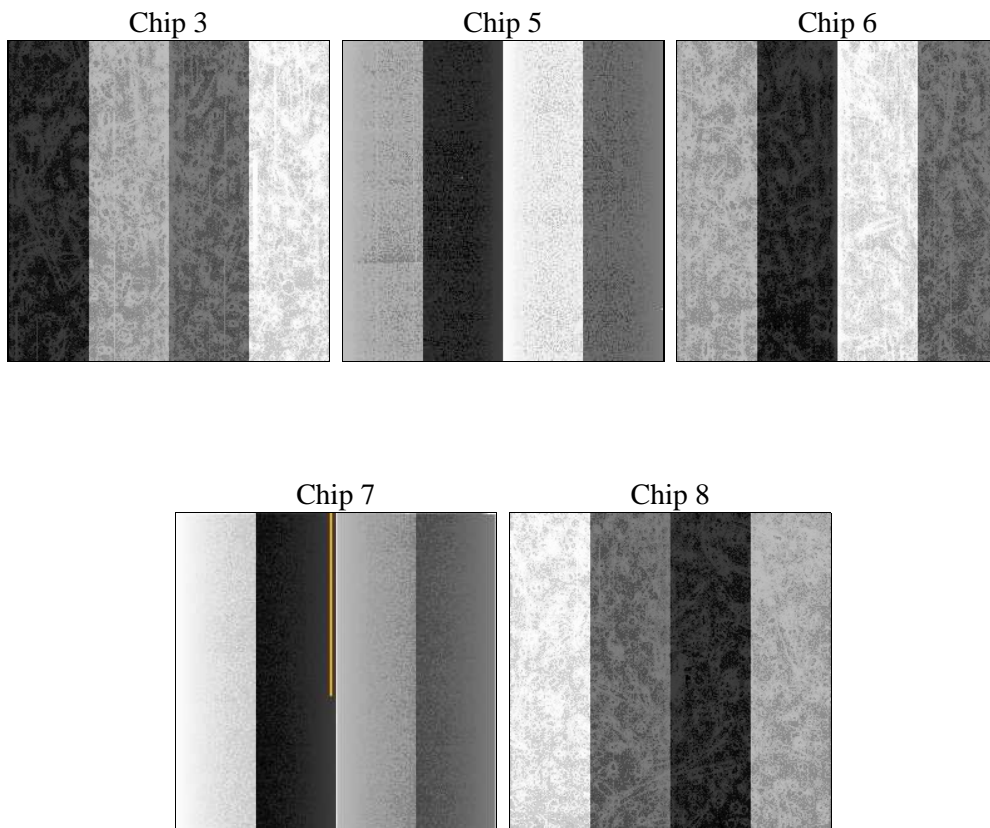
## 2 OBI

### 2.1 OBI

#### 2.1.1 Images



#### 2.1.2 Bias



### 2.1.3 Parameters

obi_num	0	Obi number	sched_exp_time	20000.000000	[s] Scheduled observation exposure time
ascdsver	8.4.4	Processing system revision	ontime	20137.600154877	Sum of GTIs [s]
caldbver	4.4.9	&#160	ontime3	20134.459194422	Sum of GTIs [s]
date	2012-04-30T14:14:03	Date and time of file creation	ontime5	20137.600154877	Sum of GTIs [s]
revision	2	Processing version of data	ontime6	20134.459154665	Sum of GTIs [s]
			ontime7	20137.600154877	Sum of GTIs [s]
			ontime8	20134.459144652	Sum of GTIs [s]
			l1events	953628	Number of level 1 events

### 2.1.4 Events

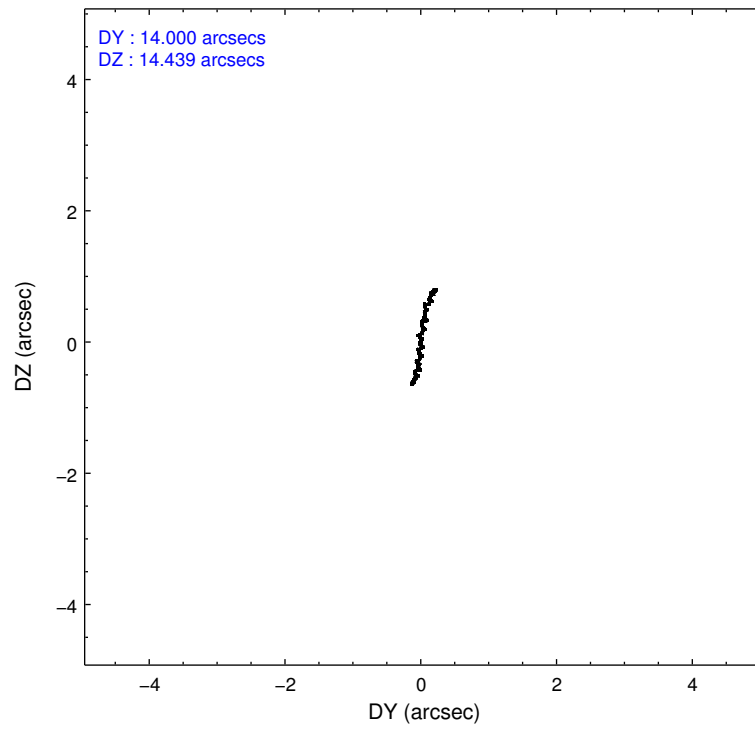
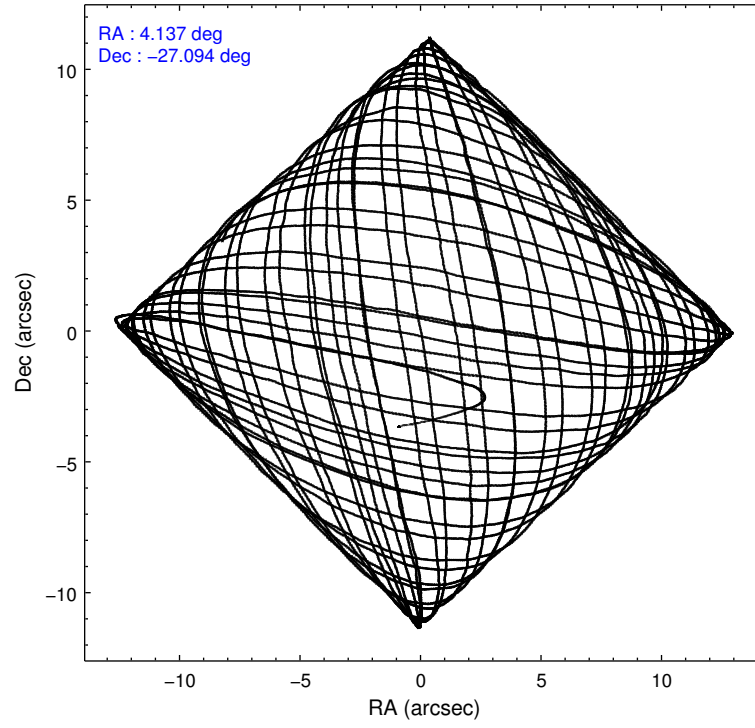
	ccd 3	ccd 5	ccd 6	ccd 7	ccd 8
level 1 events	160341	231557	169051	185729	206950
rejected events	145388	117418	152170	102297	157819
rejected %	90%	50%	90%	55%	76%

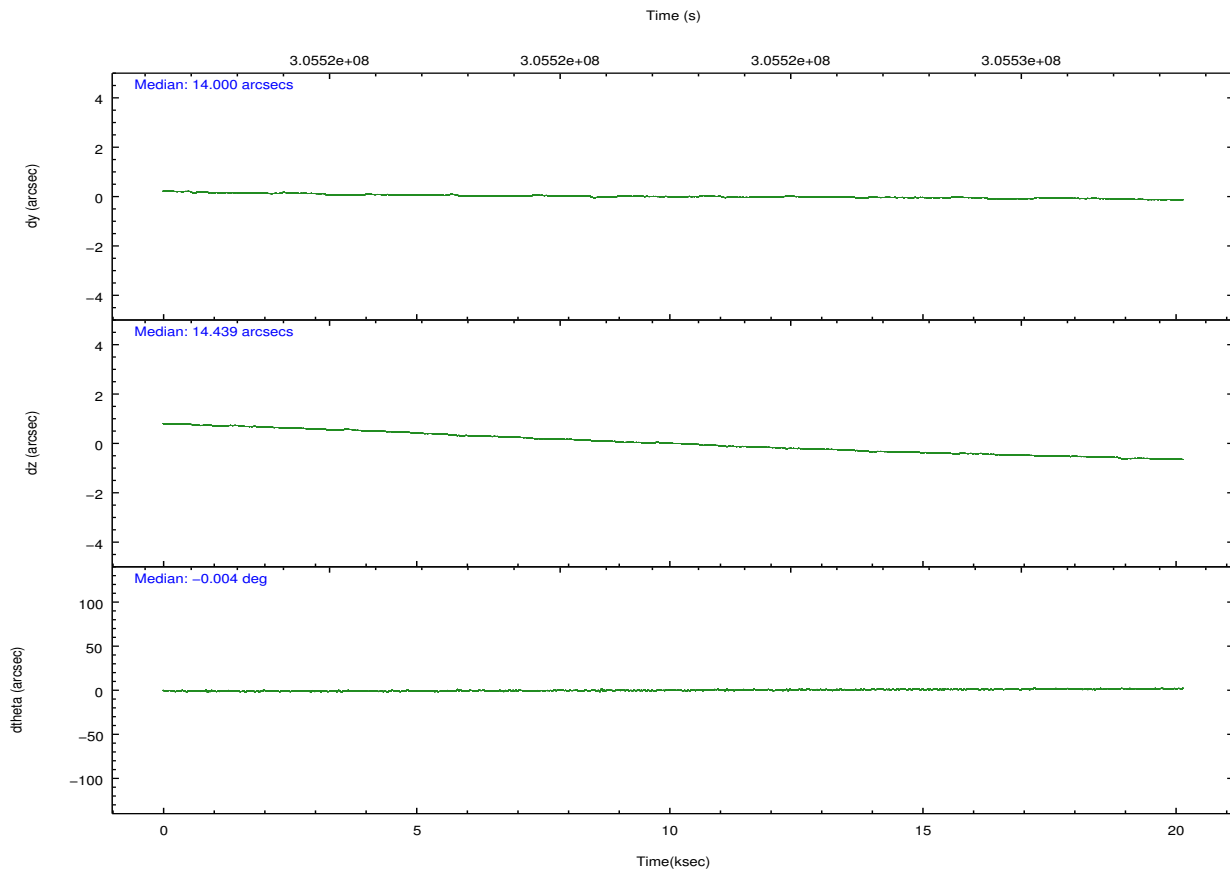
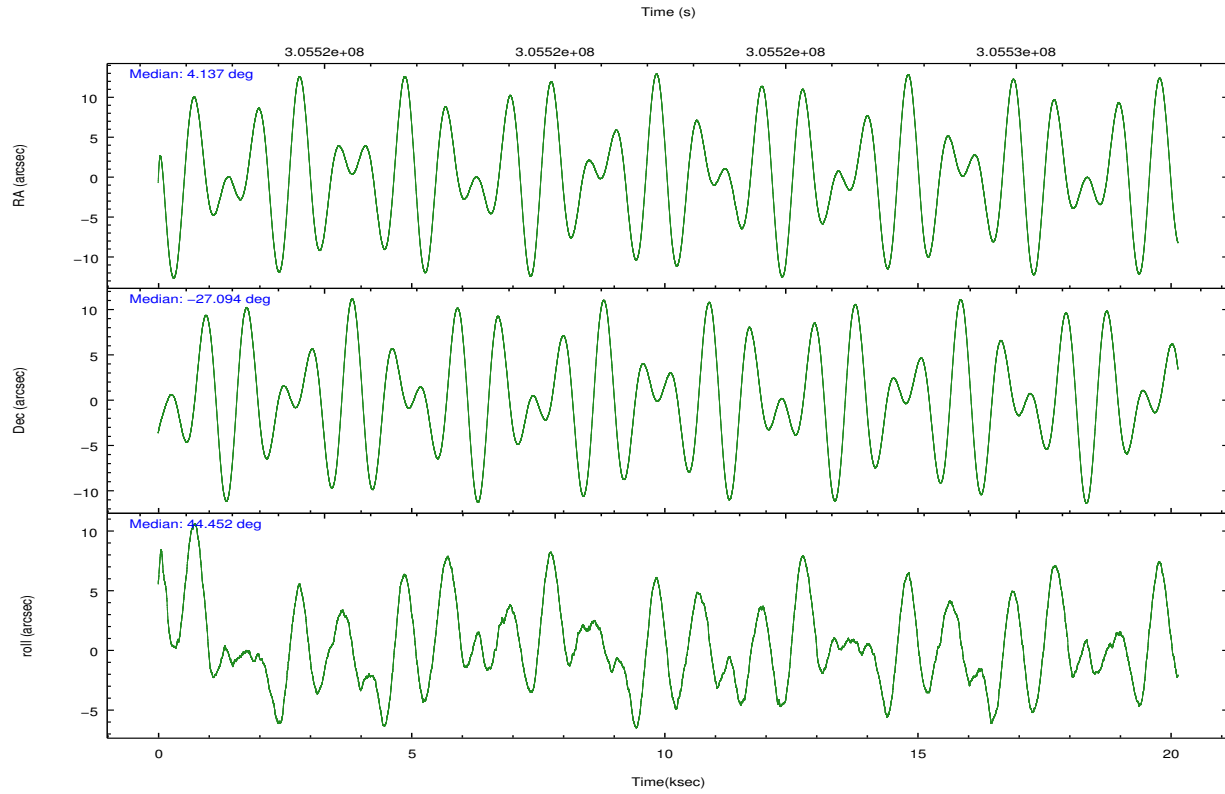
	ccd 3	ccd 5	ccd 6	ccd 7	ccd 8
grade 0 events	5360	13761	5832	8068	14844
	3%	5%	3%	4%	7%
grade 1 events	92	460	82	205	159
	0%	0%	0%	0%	0%
grade 2 events	3356	33677	3899	17329	11768
	2%	14%	2%	9%	5%
grade 3 events	1744	5280	1885	7978	5345
	1%	2%	1%	4%	2%
grade 4 events	1767	4926	1947	7979	4975
	1%	2%	1%	4%	2%
grade 5 events	6488	18862	6755	19610	9683
	4%	8%	3%	10%	4%
grade 6 events	3055	59178	3692	43974	13262
	1%	25%	2%	23%	6%
grade 7 events	138479	95413	144959	80586	146914
	86%	41%	85%	43%	70%

## 2.2 Compared Parameters

Parameter	Planned	Actual	Parameter	Planned	Actual
Instrument	ACIS	ACIS	Obspar format version number	7	7
Detector	ACIS-35678	ACIS-35678	Obspar file type	PREDICTED	ACTUAL
Grating	NONE	NONE	Obspar update status	NONE	UPDATED
Data mode	VFAINT	VFAINT	CCD I0 on	N	N
Observation mode	POINTING	POINTING	CCD I1 on	N	N
[deg] Pointing RA	4.129716	4.137523155884189	CCD I2 on	N	N
[deg] Pointing Dec	-27.120658	-27.09420736667252	CCD I3 on	O1	Y
[deg] Pointing Roll	44.296571	44.45675187483756	CCD S0 on	N	N
[mm] SIM focus pos	-0.684267	-0.6828225247311905	CCD S1 on	Y	Y
[mm] SIM defocus	0	0.001444936568705701	CCD S2 on	Y	Y
[mm] SIM translation stage pos	-190.132523	-190.1400660498719	CCD S3 on	Y	Y
[mm] SIM translation stage offset	0	0.00754346686406393	CCD S4 on	O2	Y
[s] Observation start time (MET)	305512519.184000	305511260.34426	CCD S5 on	N	N
Observation start date	2007-09-07T00:34:14	2007-09-07T00:14:20	Number of optional ACIS chips dropped	0	0
[s] Observation end time (MET)	305532519.184000	305533279.90782	On-chip summing requested	N	N
Observation end date	2007-09-07T06:07:34	2007-09-07T06:21:19	Subarray requested	NONE	NONE
Read mode	TIMED	TIMED	Alternating exposures requested	N	N
			[s] Primary exposure time	0.000000	3.1

## 2.3 Aspect



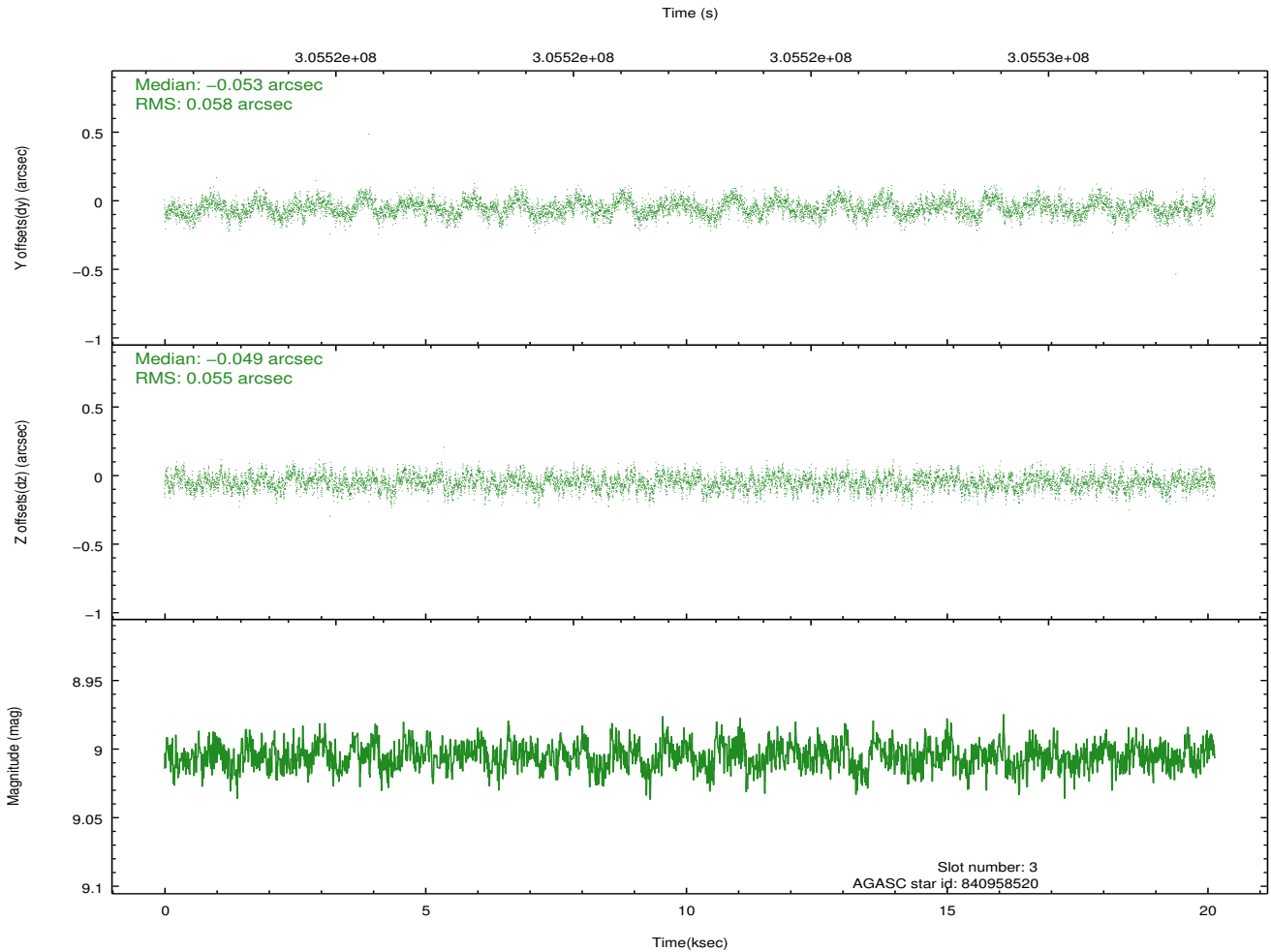
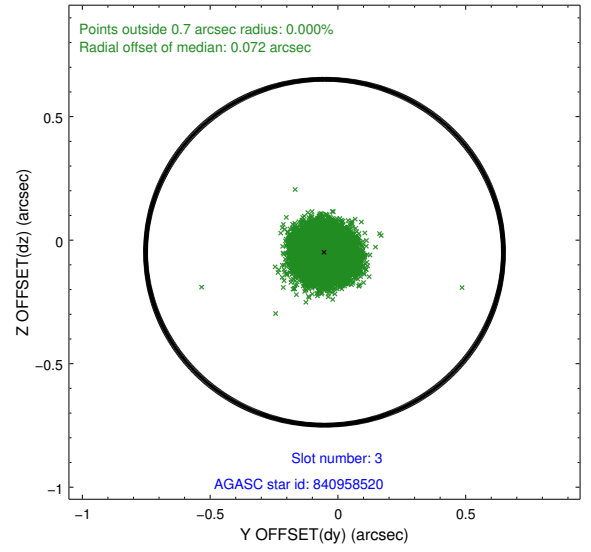
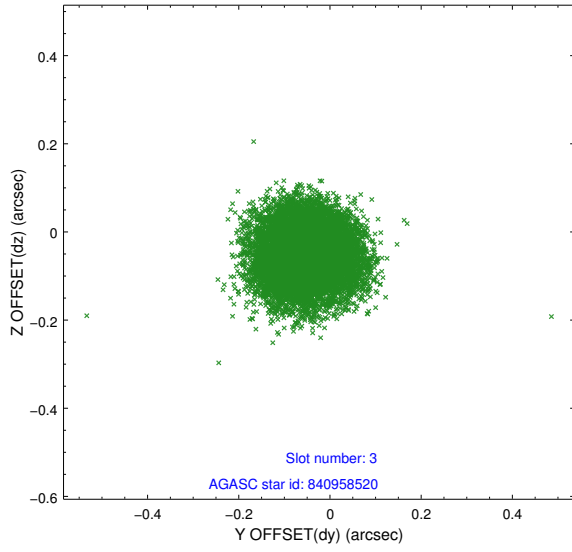


### Slot Statistics

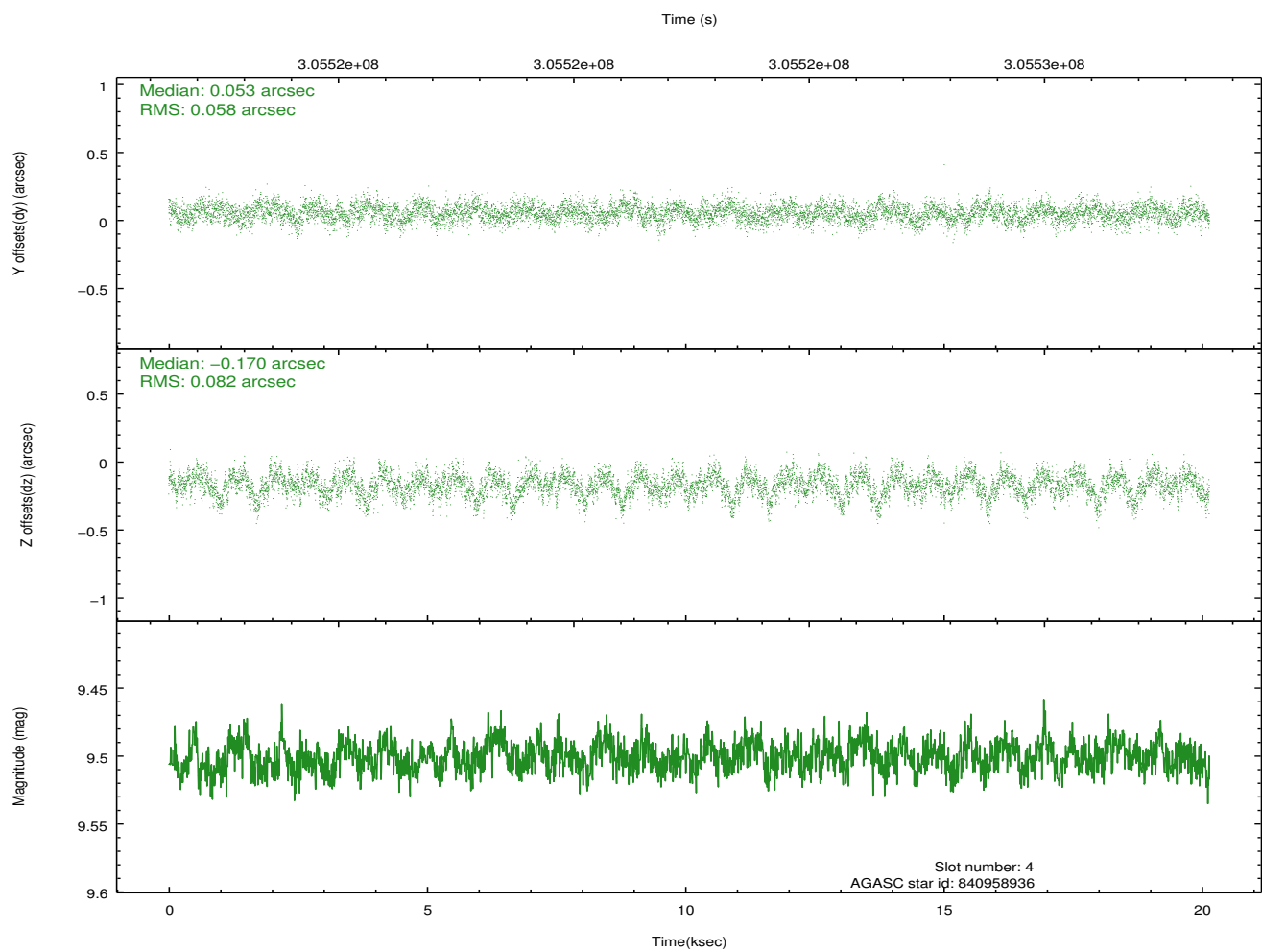
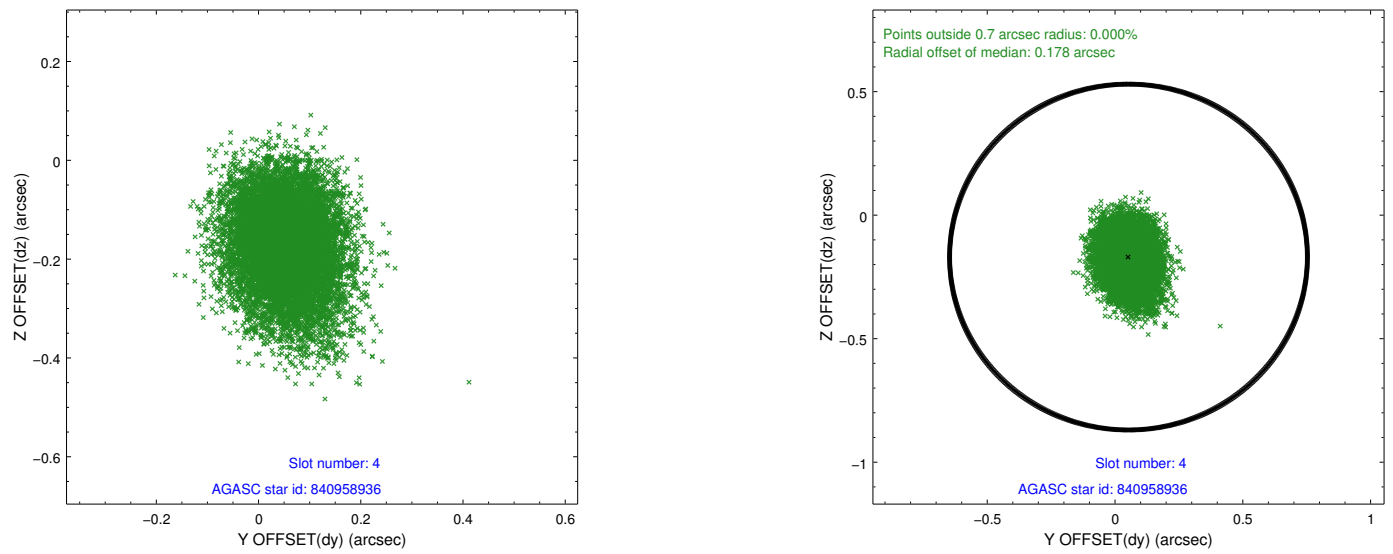
slot	status	id	mag	n_pts	med_dy	med_dz	dr1	dr2	ra	dec	mean_y	mean_z
0	FID	ACIS-S-2	7.09	4913	-0.068	-0.045	0.016	0.024	0.000000	0.000000	-767.01	-1735.88
1	FID	ACIS-S-4	7.19	4914	0.201	0.045	0.010	0.018	0.000000	0.000000	2146.44	172.52
2	FID	ACIS-S-5	7.22	4913	-0.165	0.009	0.014	0.021	0.000000	0.000000	-1819.72	166.34
3	GUIDE	840958520	9.01	9821	-0.053	-0.049	0.086	0.135	3.606307	-27.169909	-1326.37	1041.19
4	GUIDE	840958936	9.50	9815	0.053	-0.170	0.106	0.176	4.089452	-27.144959	-153.23	27.38
5	GUIDE	840960136	10.44	9804	0.092	0.094	0.184	0.312	4.505609	-27.466496	-10.61	-1731.09
6	GUIDE	841352336	8.96	9752	-0.055	0.104	0.084	0.133	3.763646	-27.502481	-1796.93	-168.96
7	GUIDE	841354448	9.39	9803	-0.034	0.024	0.105	0.170	4.042978	-27.778320	-1852.50	-1501.07

## 2.4 Star Slots

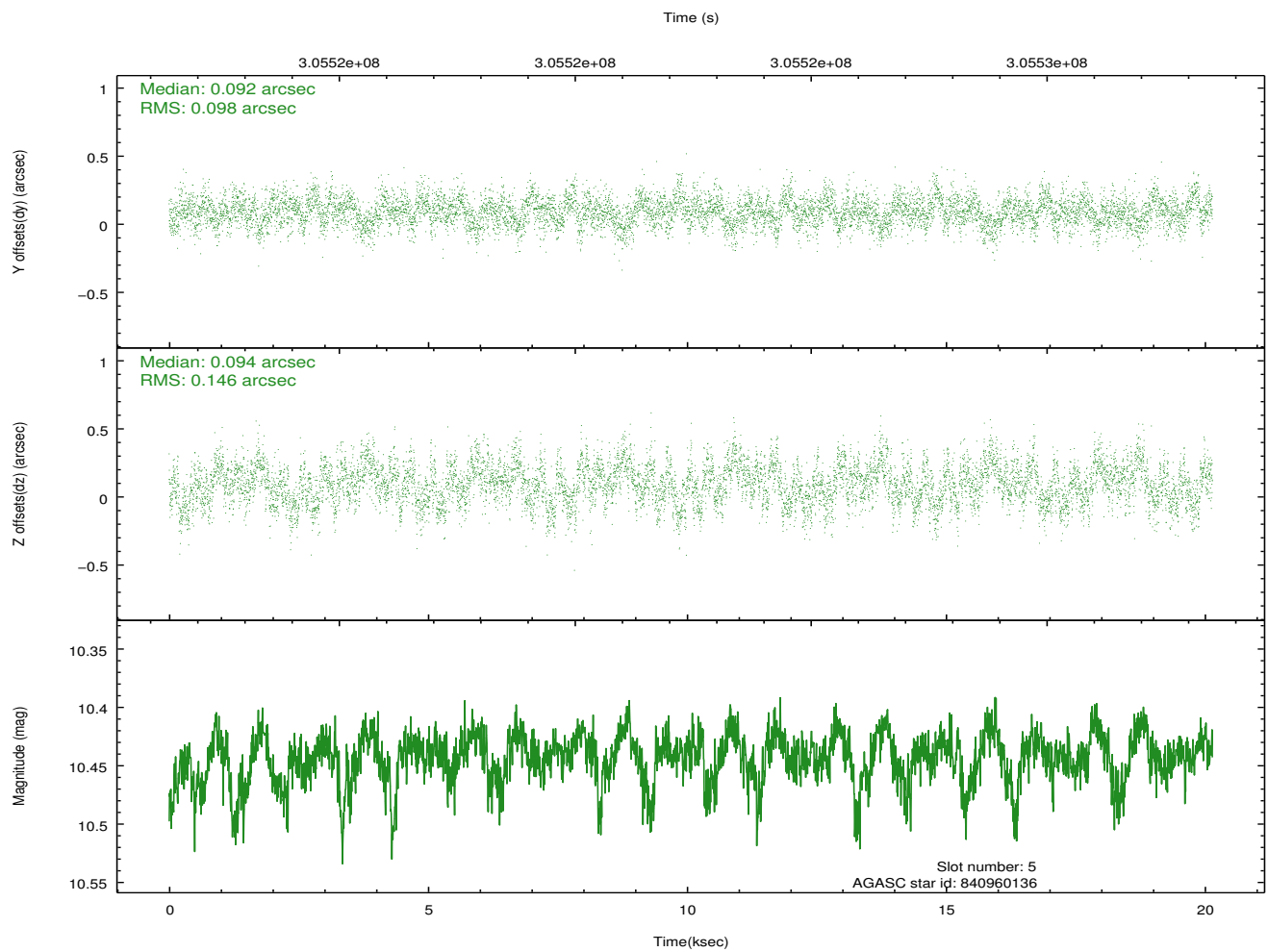
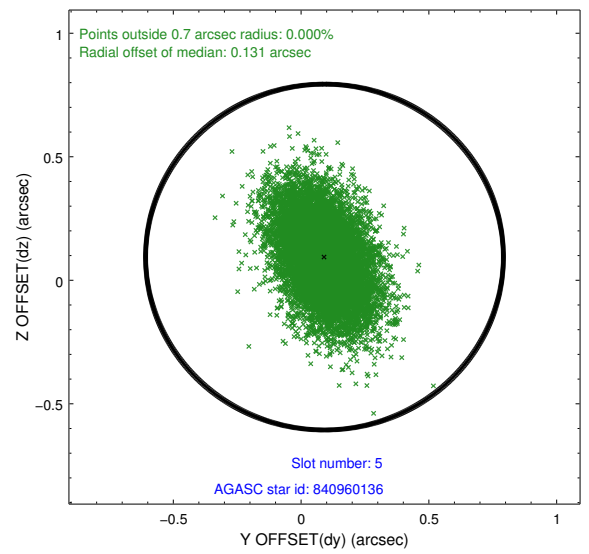
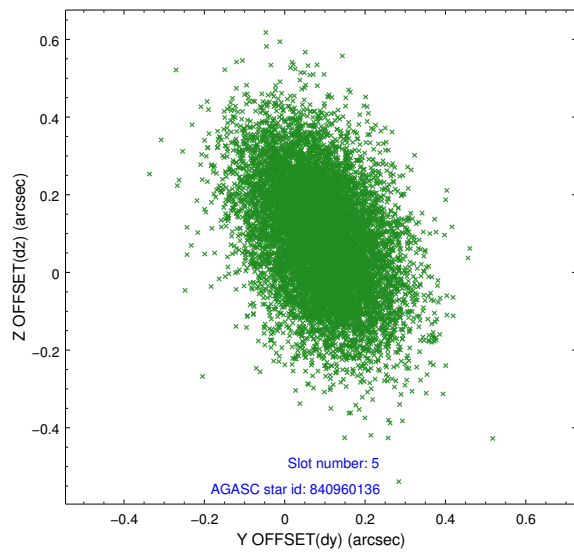
### 2.4.1 Slot 3



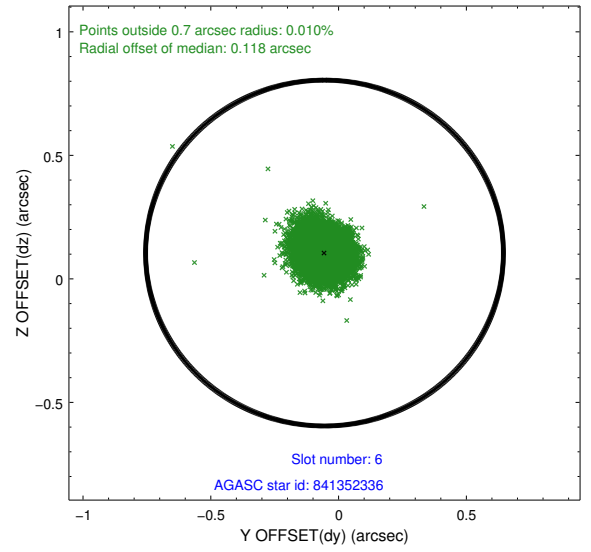
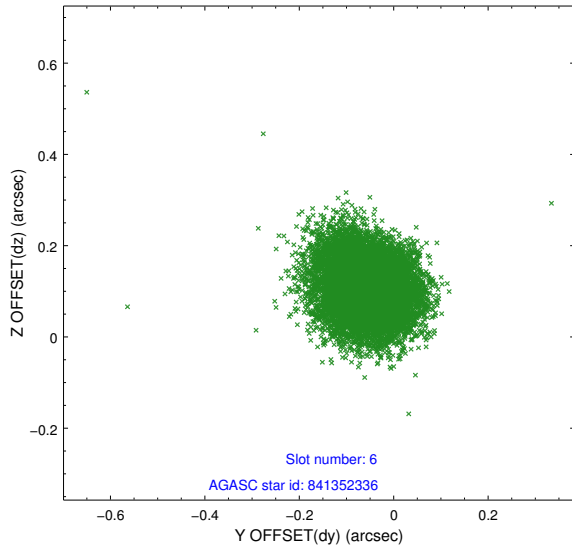
## 2.4.2 Slot 4



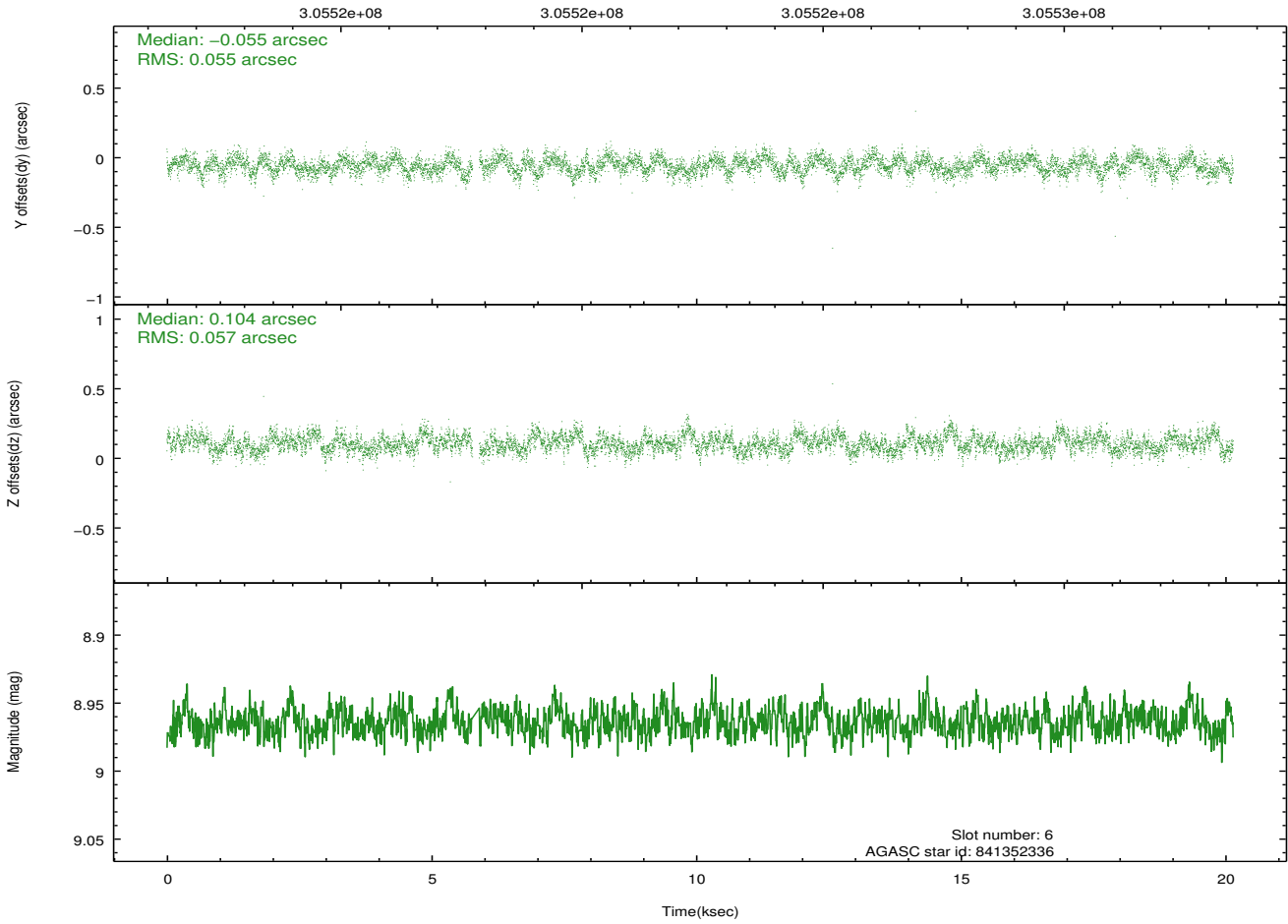
### 2.4.3 Slot 5



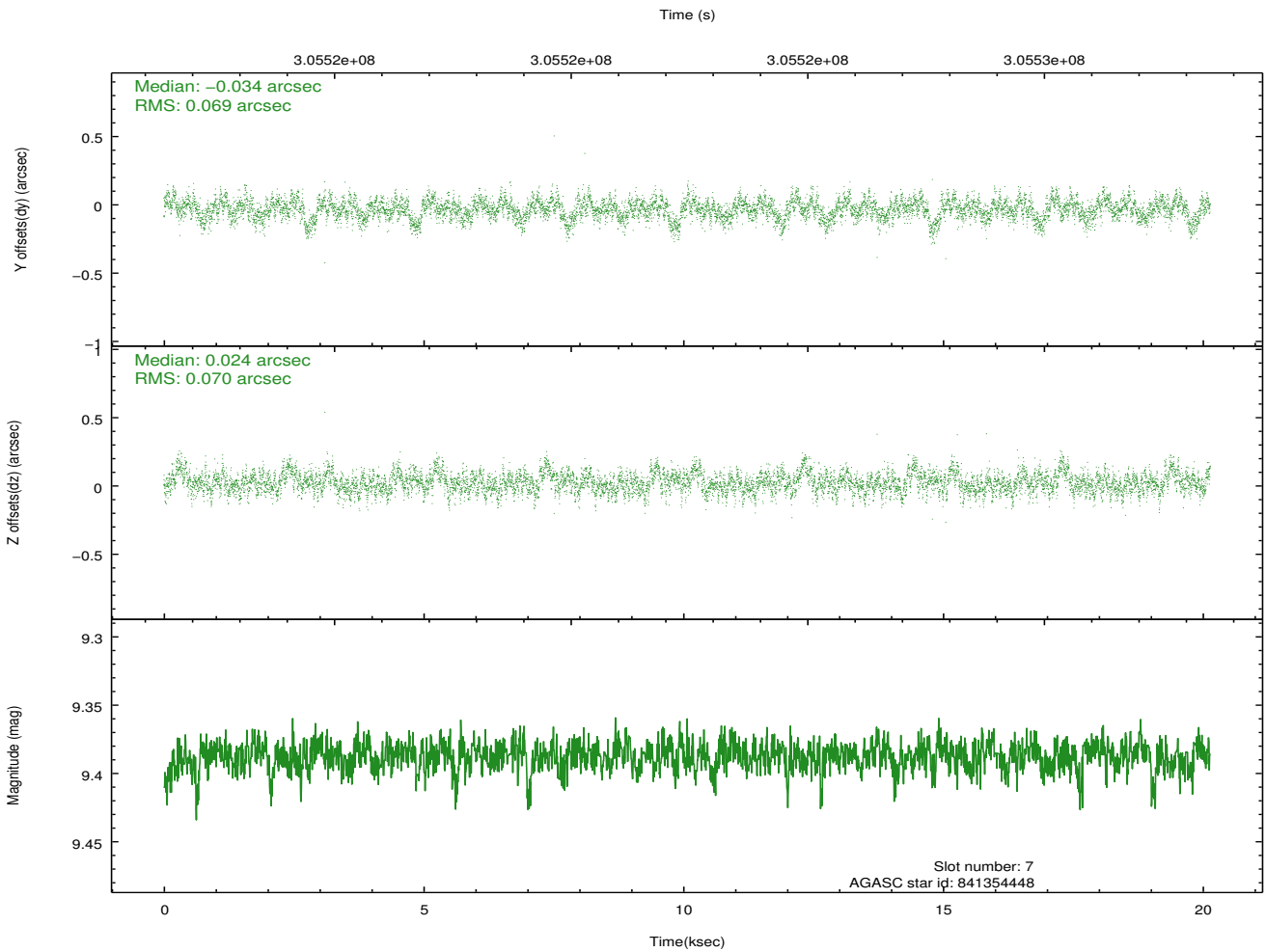
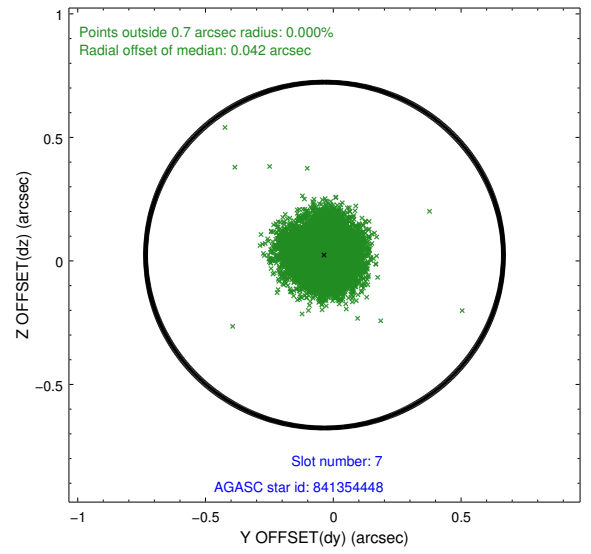
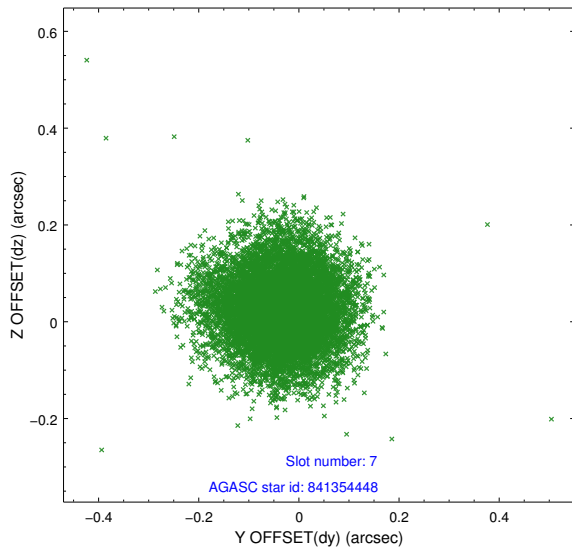
## 2.4.4 Slot 6



Time (s)

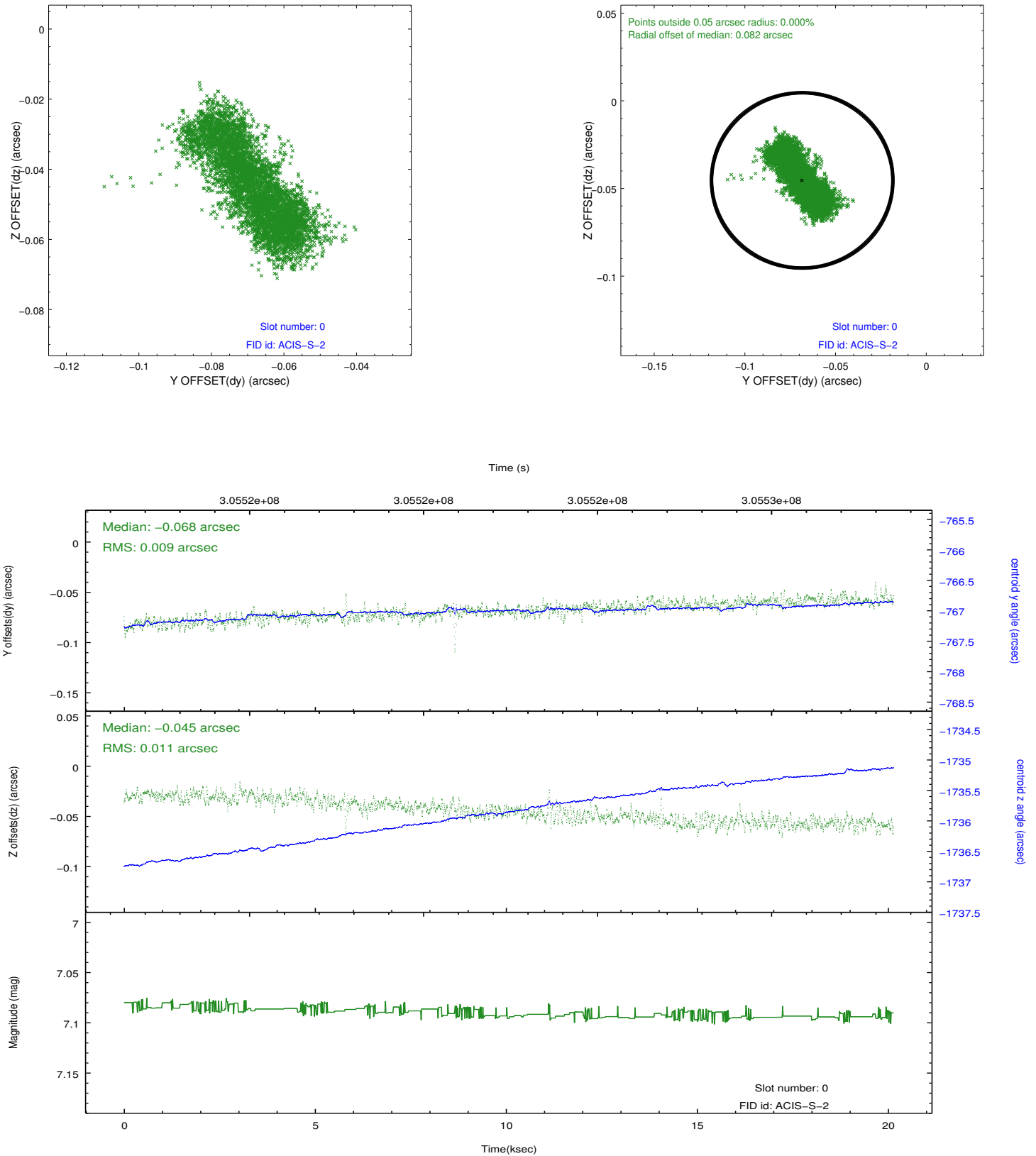


## 2.4.5 Slot 7

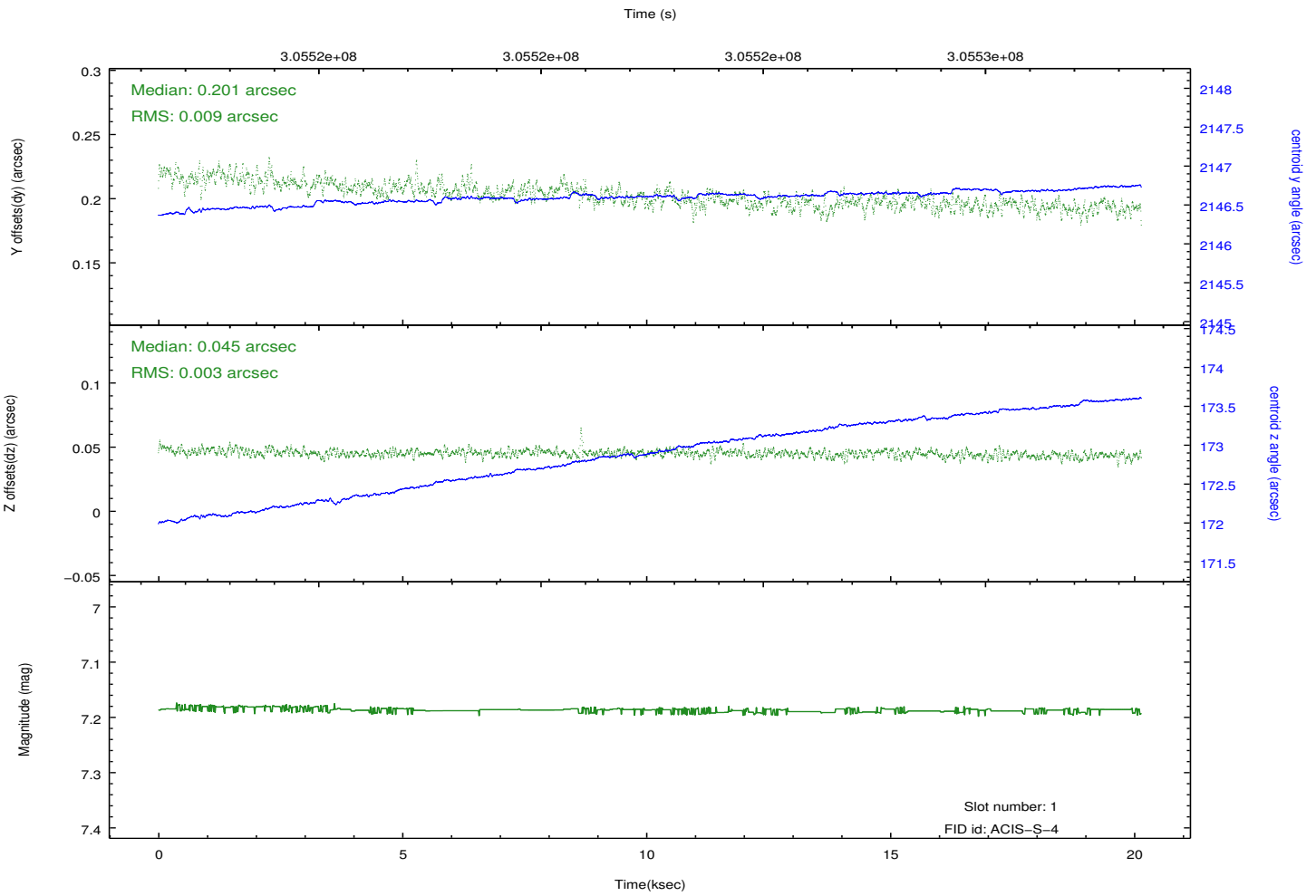
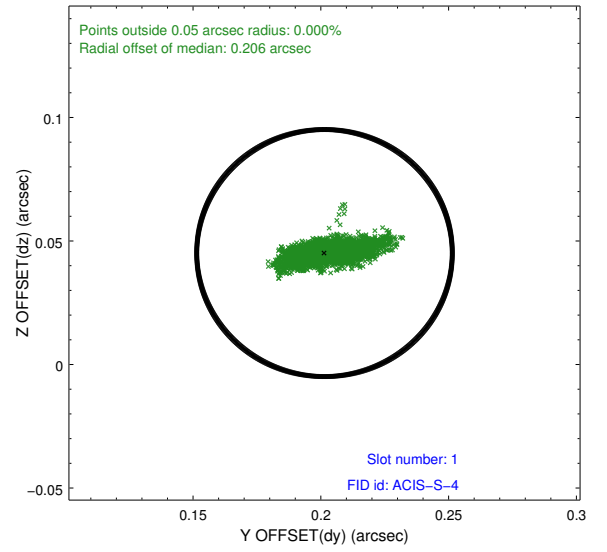
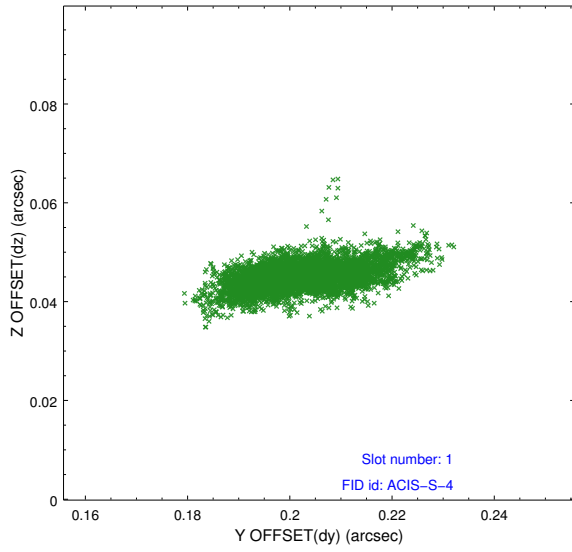


## 2.5 FID Slots

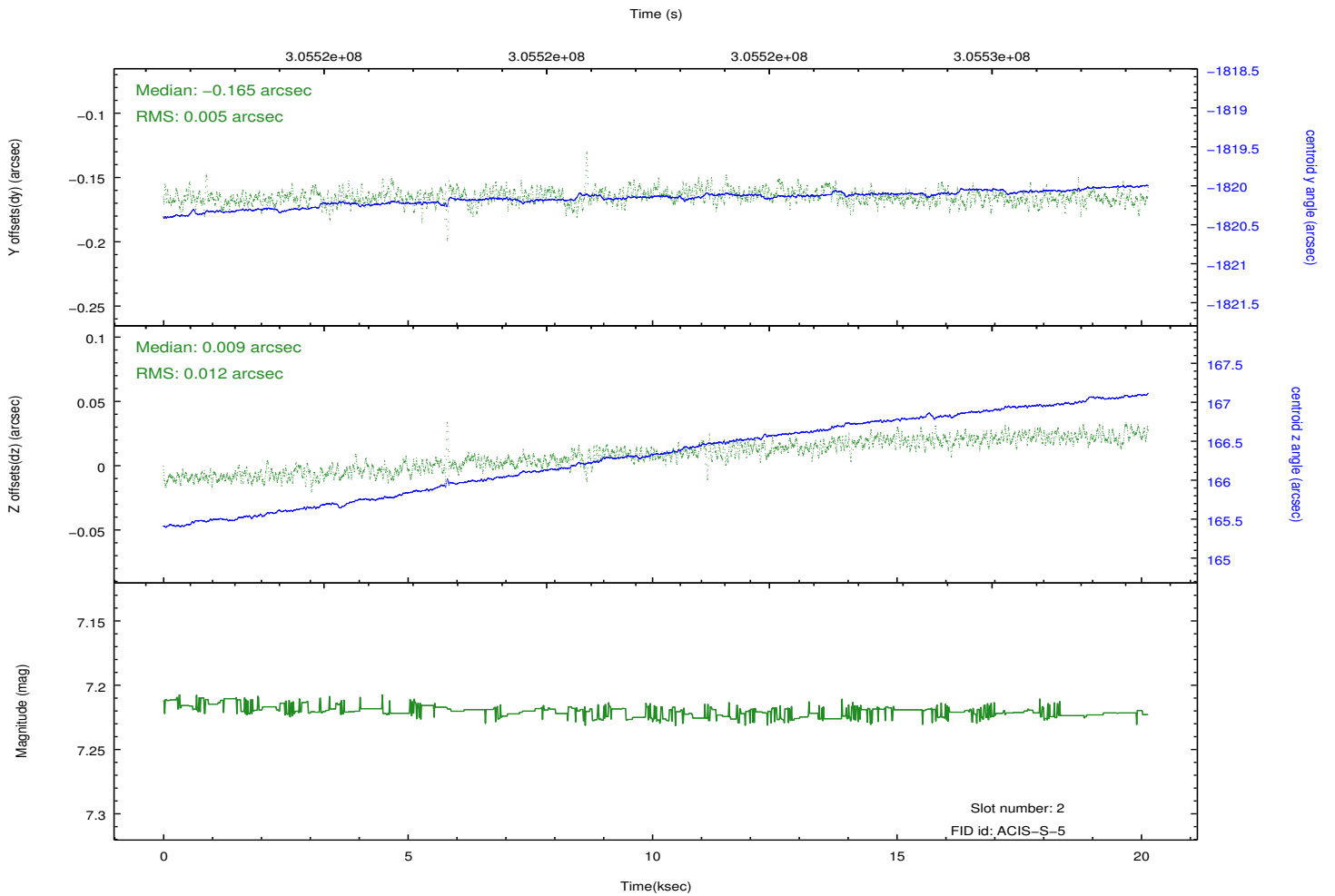
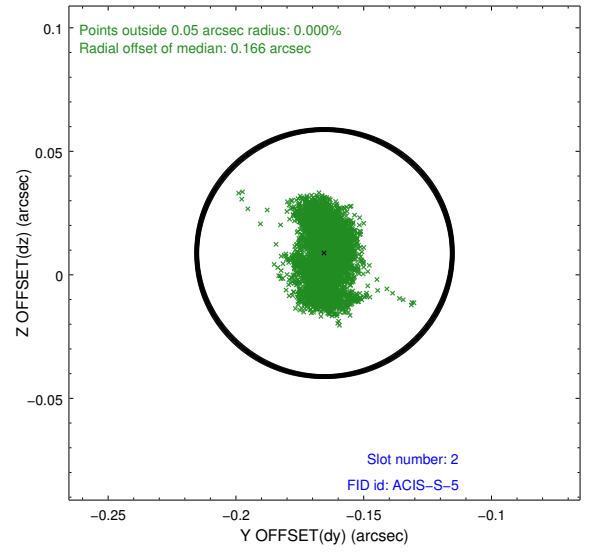
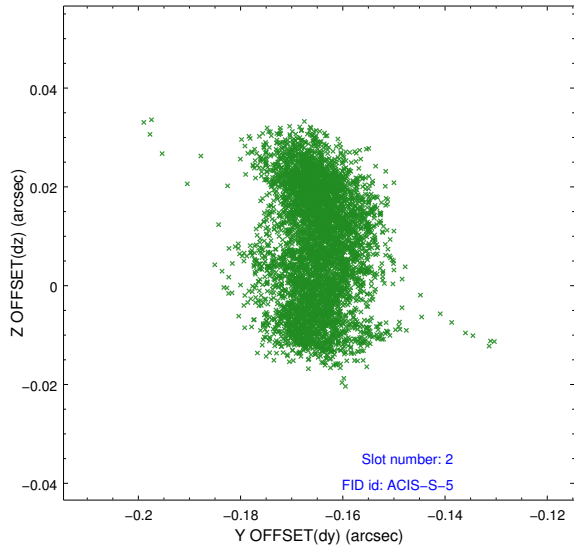
### 2.5.1 Slot 0



## 2.5.2 Slot 1



### 2.5.3 Slot 2



# A Summary

## A.1 Status

V&V Scientist	Jen Lauer
V&V Date (YYYY-MM-DD)	2012.05.02
V&V Edition	1
V&V Disposition and Status	OK
V&V Charge Time	20.1376001

## A.2 Comments