

V&V Reference Report

L2 ASCDS Version : 8.4.4

Observation 7916 - L2 Version 2
Chandra X-Ray Center

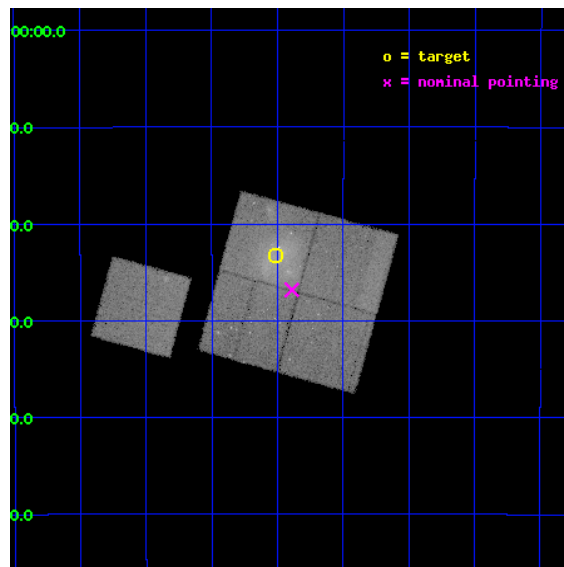
L2 Processing Date : Apr 30 2012

Contents

1	Front	2
2	OBI	3
2.1	OBI	3
2.1.1	Images	3
2.1.2	Bias	3
2.1.3	Parameters	4
2.1.4	Events	4
2.2	Compared Parameters	5
2.3	Aspect	6
2.4	Star Slots	9
2.4.1	Slot 3	9
2.4.2	Slot 4	10
2.4.3	Slot 5	11
2.4.4	Slot 6	12
2.4.5	Slot 7	13
2.5	FID Slots	14
2.5.1	Slot 0	14
2.5.2	Slot 1	15
2.5.3	Slot 2	16
A	Summary	17
A.1	Status	17
A.2	Comments	17

1 Front

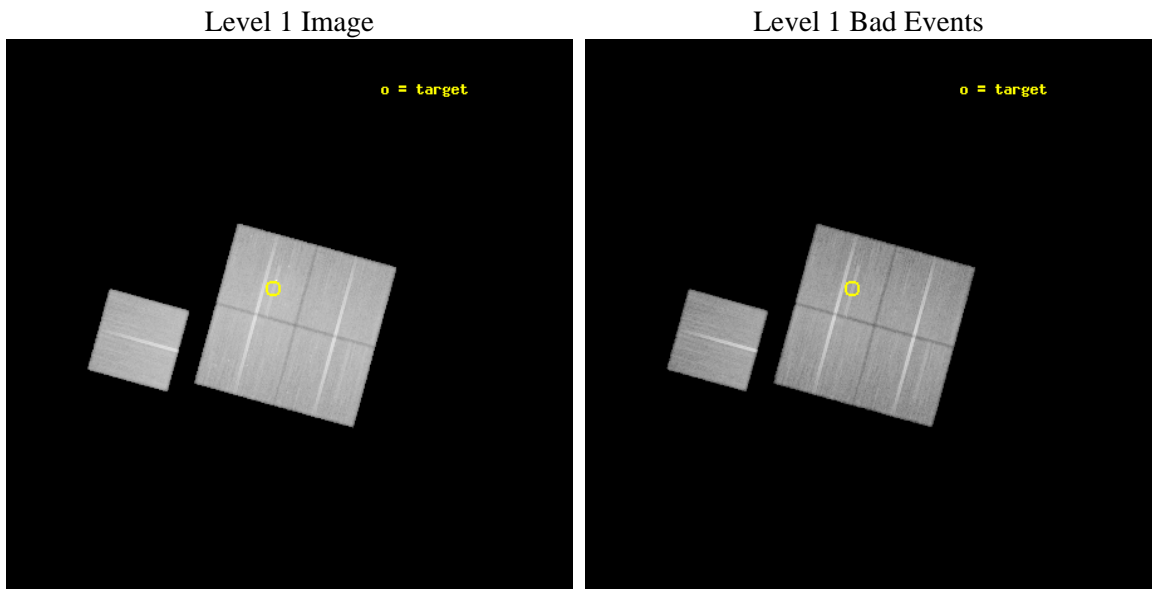
seq_num	800634	Sequence number
obs_id	7916	Observation id
title	Testing the merger-radio halo connection in the massive galaxy cluster RXCJ2003.5-2323	Proposal title
observer	Dr Simona Giacintucci	Principal investigator
object	RXCJ2003.5-2323	Source name
dtcycle	0	
cycle	P	events from which exps? Prim/Second/Both
ra_targ	300.879167	Observer's specified target RA [deg]
dec_targ	-23.388056	Observer's specified target Dec [deg]
ra_nom	300.84763424374	Nominal RA [deg]
dec_nom	-23.447085927142	Nominal Dec [deg]
roll_nom	285.40357991326	Nominal Roll [deg]
revision	2	Processing version of data
ontime	50145.477414966	Sum of GTIs [s]
livetime	49490.289835976	Livetime [s]
ontime0	50154.900385737	Sum of GTIs [s]
ontime1	50148.618425071	Sum of GTIs [s]
ontime2	50151.759405434	Sum of GTIs [s]
ontime3	50145.477414966	Sum of GTIs [s]
ontime6	50148.618385196	Sum of GTIs [s]
l2events	193397	Number of level 2 events



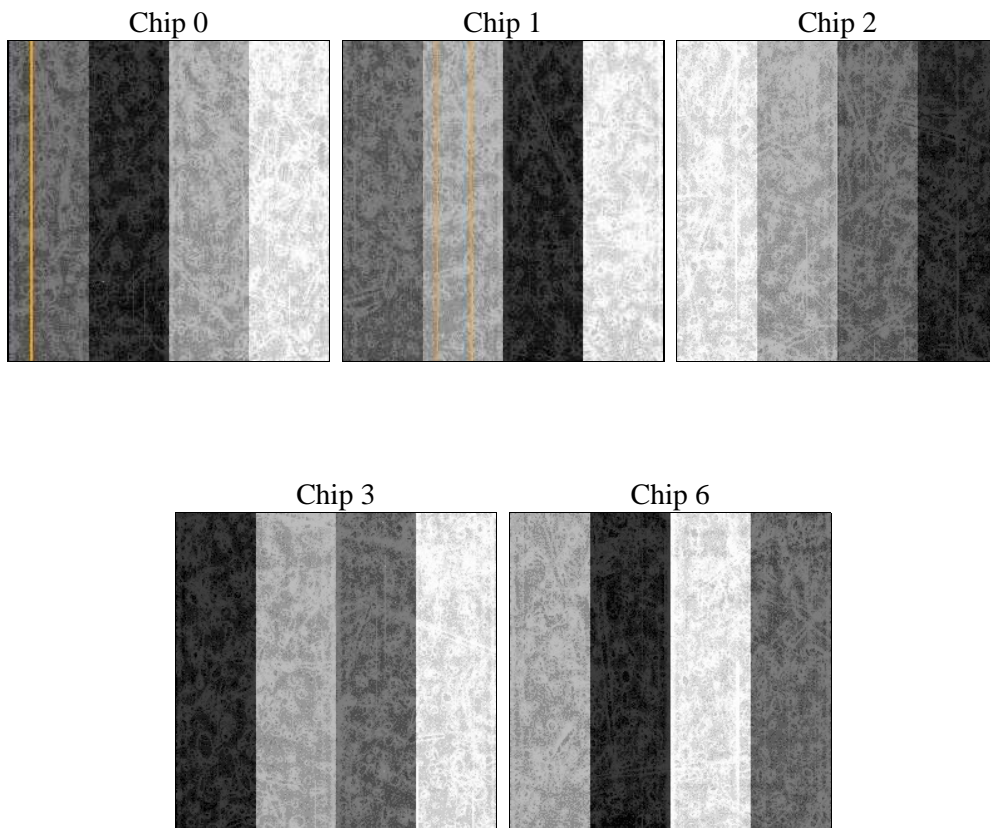
2 OBI

2.1 OBI

2.1.1 Images



2.1.2 Bias



2.1.3 Parameters

obi_num	0	Obi number	sched_exp_time	50000.000000	[s] Scheduled observation exposure time
ascdsver	8.4.4	Processing system revision	ontime	50145.477414966	Sum of GTIs [s]
caldbver	4.4.9	 	ontime0	50154.900385737	Sum of GTIs [s]
date	2012-04-30T15:48:35	Date and time of file creation	ontime1	50148.618425071	Sum of GTIs [s]
revision	2	Processing version of data	ontime2	50151.759405434	Sum of GTIs [s]
			ontime3	50145.477414966	Sum of GTIs [s]
			ontime6	50148.618385196	Sum of GTIs [s]
			l1events	2002180	Number of level 1 events

2.1.4 Events

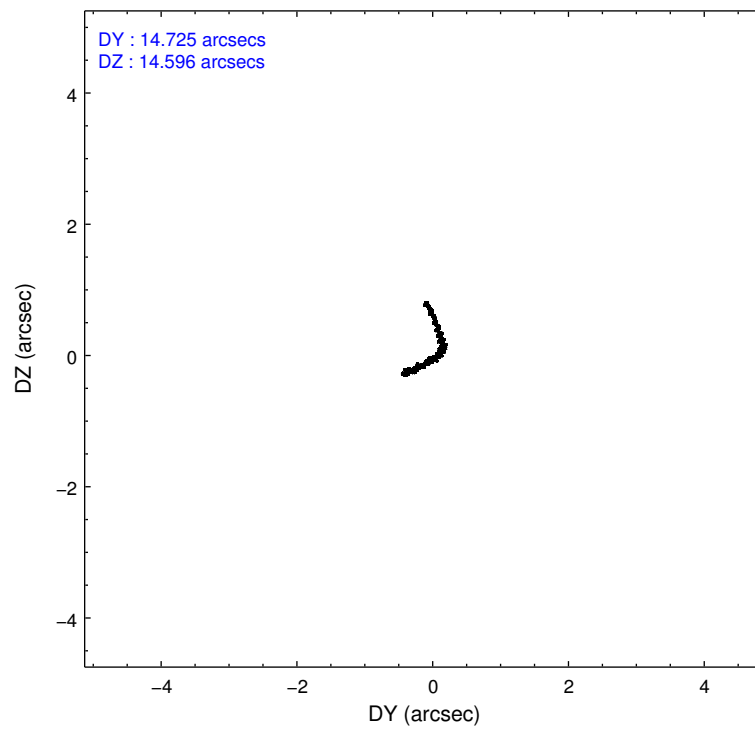
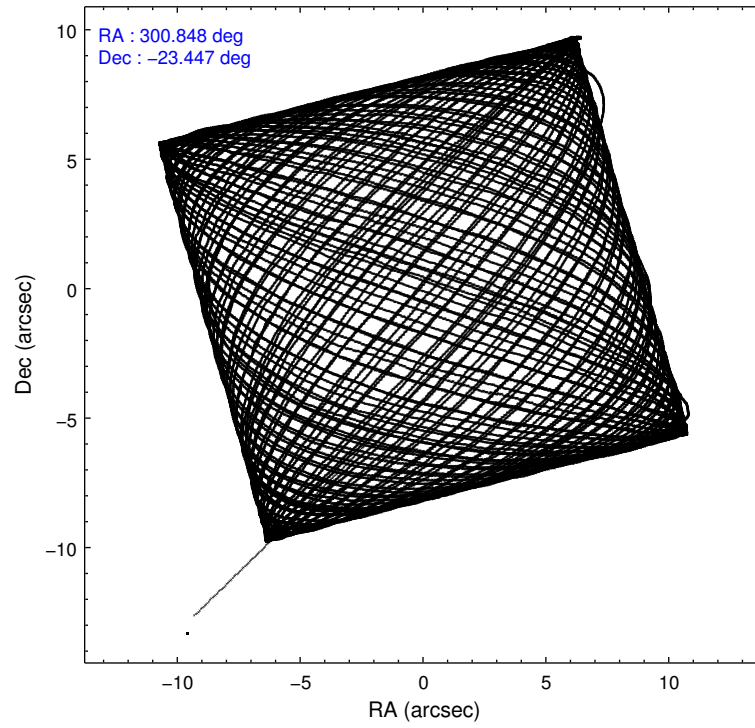
	ccd 0	ccd 1	ccd 2	ccd 3	ccd 6
level 1 events	381002	378832	419073	418341	404932
rejected events	340543	333671	378146	357079	363557
rejected %	89%	88%	90%	85%	89%

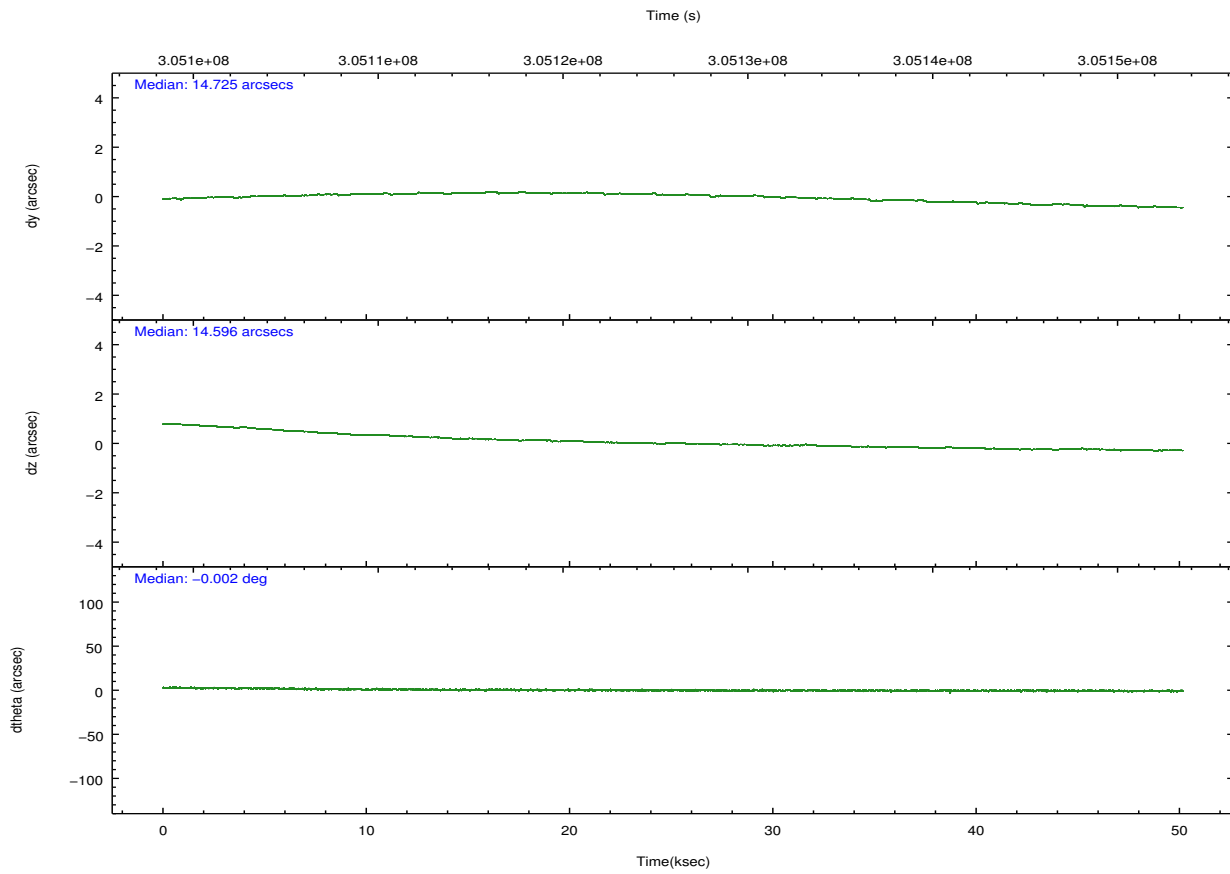
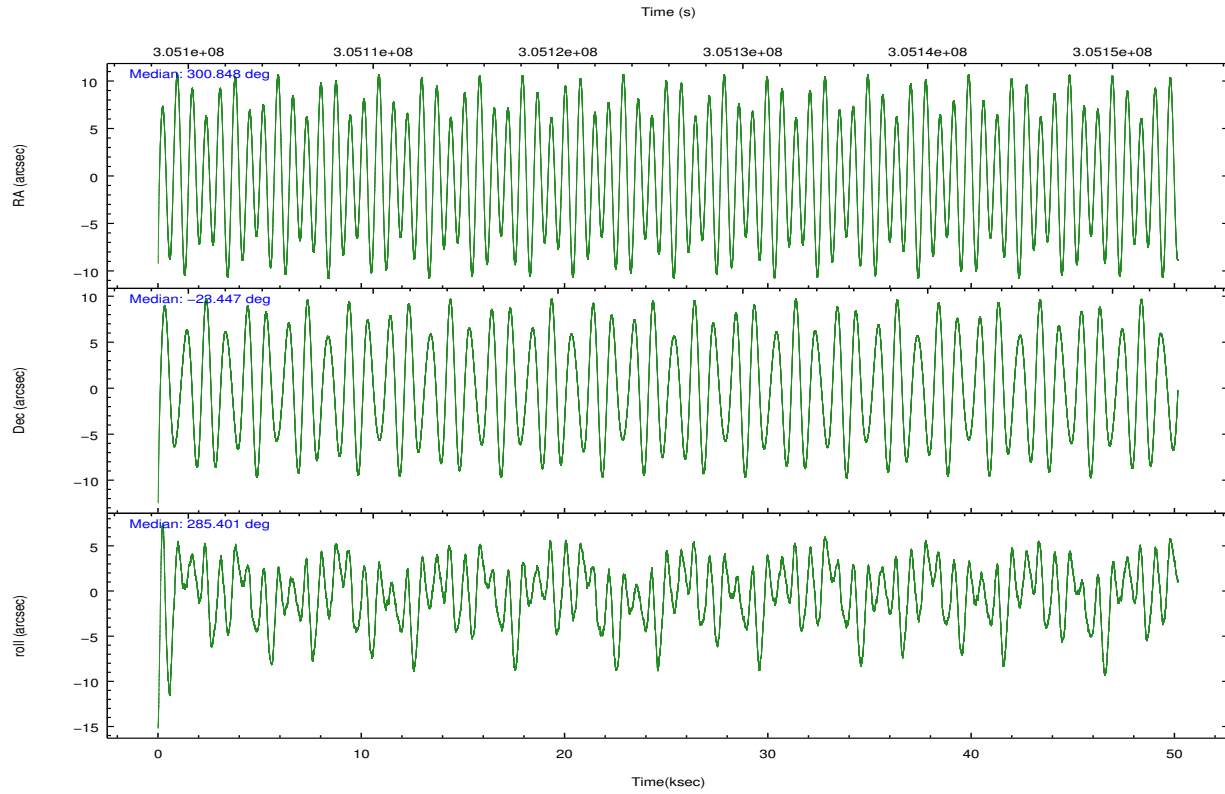
	ccd 0	ccd 1	ccd 2	ccd 3	ccd 6
grade 0 events	14264	16563	15716	32478	14531
	3%	4%	3%	7%	3%
grade 1 events	227	220	224	348	195
	0%	0%	0%	0%	0%
grade 2 events	9690	10041	9578	10768	9219
	2%	2%	2%	2%	2%
grade 3 events	4436	4898	4279	5014	4505
	1%	1%	1%	1%	1%
grade 4 events	4444	4861	4336	4921	4514
	1%	1%	1%	1%	1%
grade 5 events	13766	15257	13543	15993	15783
	3%	4%	3%	3%	3%
grade 6 events	7780	8992	7199	8335	8780
	2%	2%	1%	1%	2%
grade 7 events	326395	318000	364198	340484	347405
	85%	83%	86%	81%	85%

2.2 Compared Parameters

Parameter	Planned	Actual	Parameter	Planned	Actual
Instrument	ACIS	ACIS	Obspar format version number	7	7
Detector	ACIS-01236	ACIS-01236	Obspar file type	PREDICTED	ACTUAL
Grating	NONE	NONE	Obspar update status	NONE	UPDATED
Data mode	VFAINT	VFAINT	CCD I0 on	Y	Y
Observation mode	POINTING	POINTING	CCD I1 on	Y	Y
[deg] Pointing RA	300.826206	300.8476342437352	CCD I2 on	Y	Y
[deg] Pointing Dec	-23.427855	-23.44708592714171	CCD I3 on	Y	Y
[deg] Pointing Roll	285.186375	285.4035799132645	CCD S0 on	N	N
[mm] SIM focus pos	-0.782348	-0.7809083437167272	CCD S1 on	N	N
[mm] SIM defocus	0	0.001439871863259334	CCD S2 on	O1	Y
[mm] SIM translation stage pos	-233.592463	-233.5874344608287	CCD S3 on	N	N
[mm] SIM translation stage offset	0	-0.005018542100998502	CCD S4 on	N	N
[s] Observation start time (MET)	305101036.184000	305099807.38697	CCD S5 on	N	N
Observation start date	2007-09-02T06:16:11	2007-09-02T05:56:47	Number of optional ACIS chips dropped	0	0
[s] Observation end time (MET)	305151036.184000	305151581.67696	On-chip summing requested	N	N
Observation end date	2007-09-02T20:09:31	2007-09-02T20:19:41	Subarray requested	NONE	NONE
Read mode	TIMED	TIMED	Alternating exposures requested	N	N
			[s] Primary exposure time	0.000000	3.1

2.3 Aspect





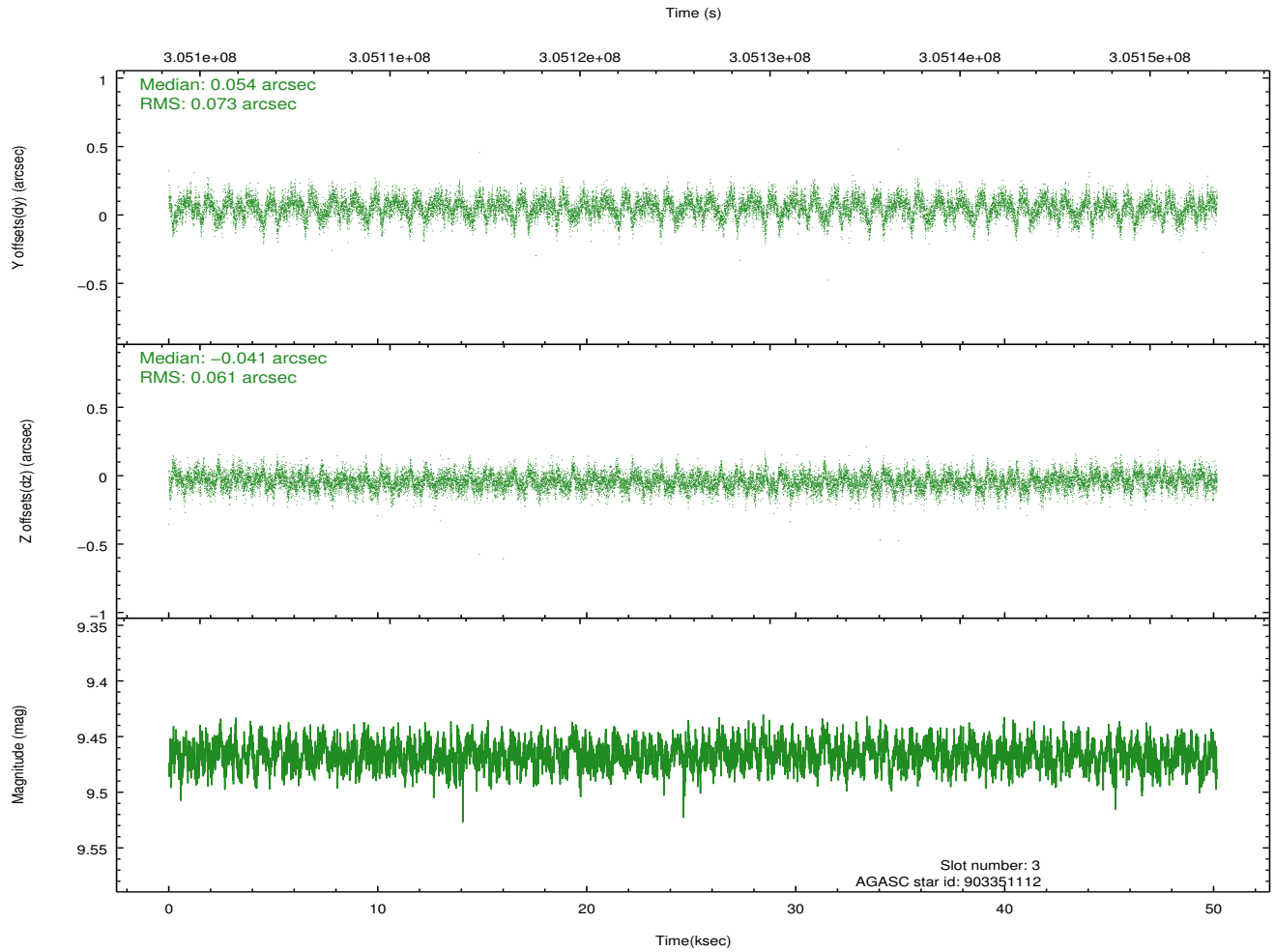
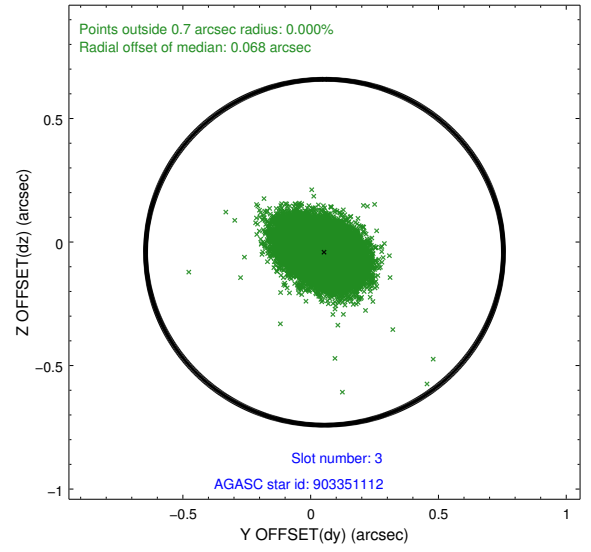
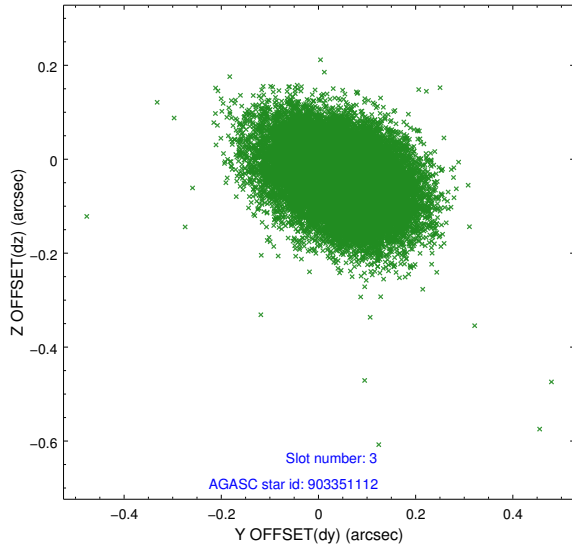
Slot Statistics

slot	status	id	mag	n_pts	med_dy	med_dz	dr1	dr2	ra	dec	mean_y	mean_z
0	FID	ACIS-I-1	7.23	12234	0.029	0.000	0.013	0.046	0.000000	0.000000	924.83	-838.27
1	FID	ACIS-I-5	7.23	12235	-0.223	0.031	0.010	0.022	0.000000	0.000000	-1823.55	1059.26
2	FID	ACIS-I-6	7.24	12234	0.103	0.039	0.012	0.032	0.000000	0.000000	390.46	1703.76
3	GUIDE	903351112	9.47	24446	0.054	-0.041	0.099	0.168	301.138832	-22.893027	-1585.01	1504.83
4	GUIDE	903353776	9.80	24365	0.009	0.065	0.114	0.183	300.808178	-23.650280	757.63	-266.75
5	GUIDE	903353888	9.62	24437	0.018	-0.057	0.115	0.182	300.315711	-23.200017	-1230.59	-1416.01
6	GUIDE	903353928	9.11	24448	-0.080	0.038	0.101	0.157	300.458492	-23.118167	-1392.74	-883.19
7	GUIDE	903357280	8.89	24452	0.002	-0.007	0.072	0.117	300.850637	-23.947107	1825.56	-411.85

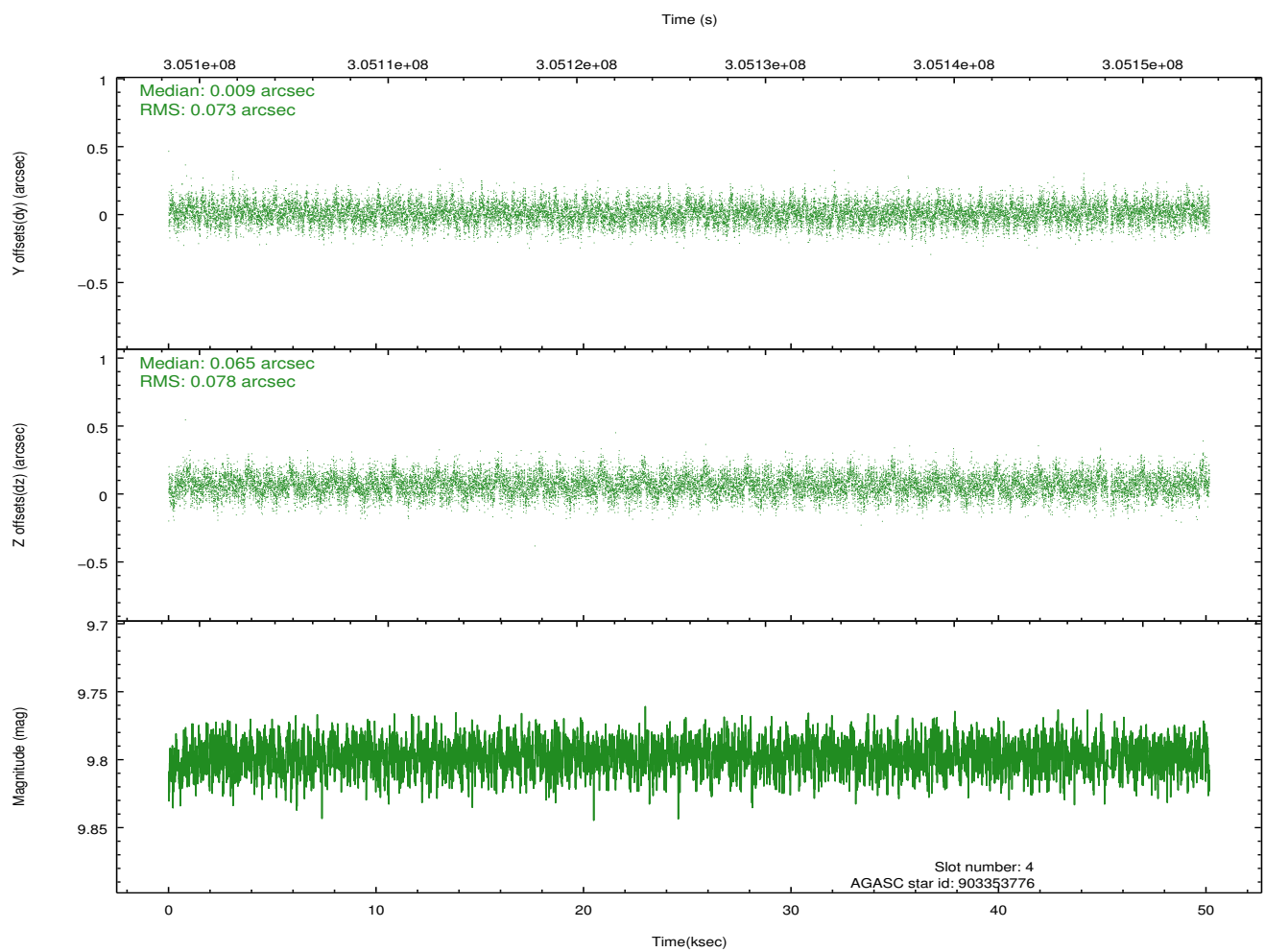
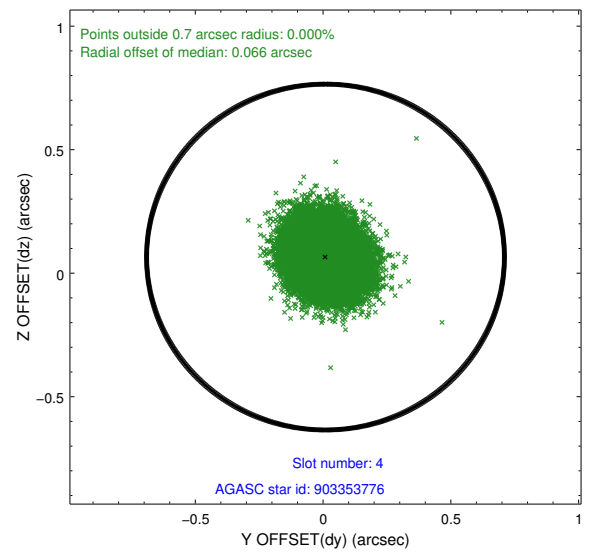
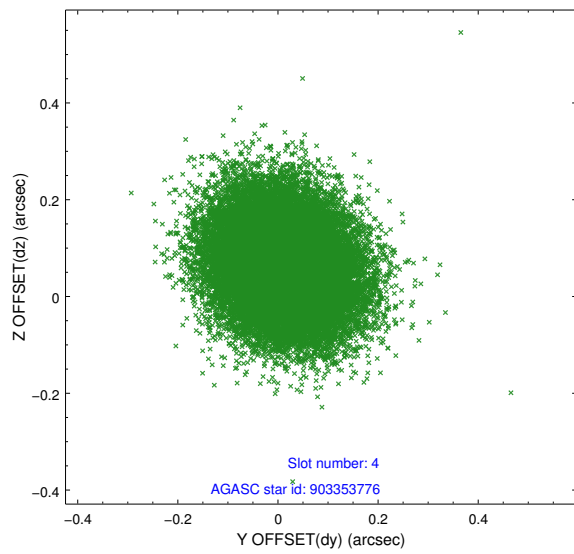
∞

2.4 Star Slots

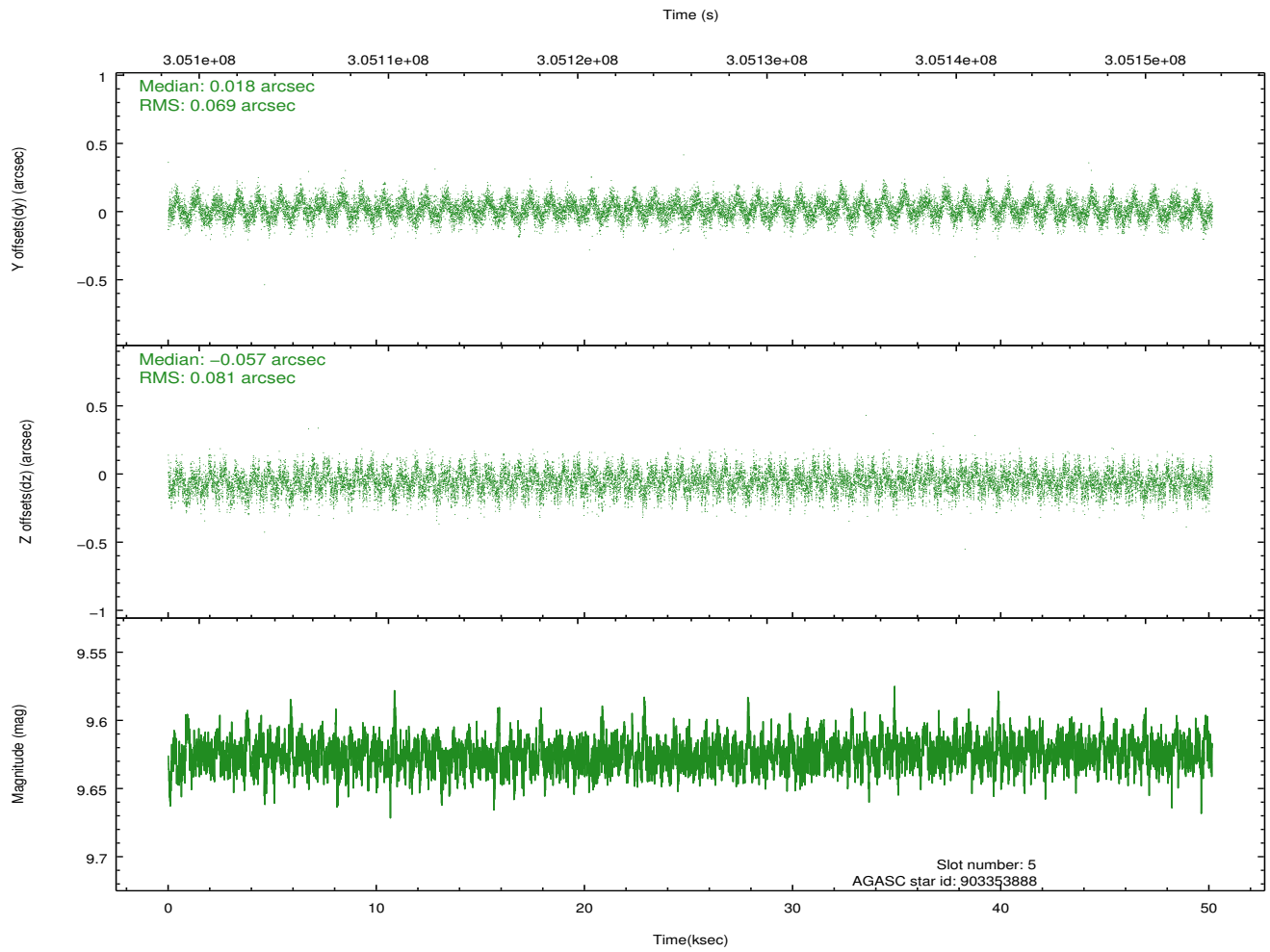
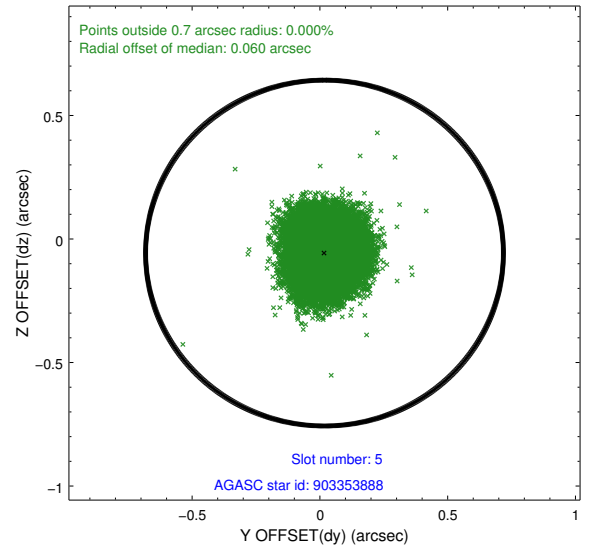
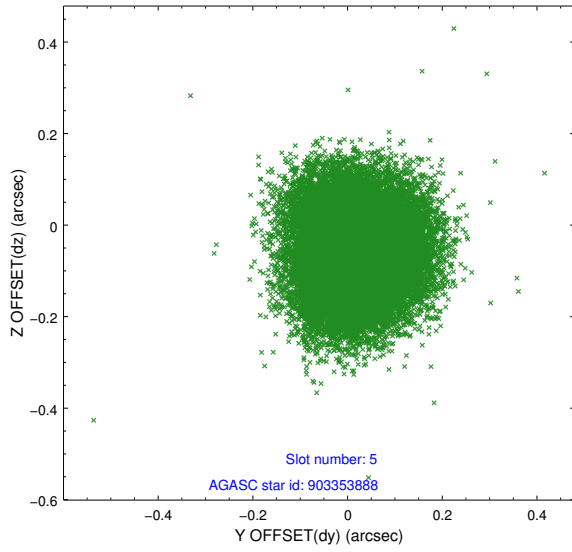
2.4.1 Slot 3



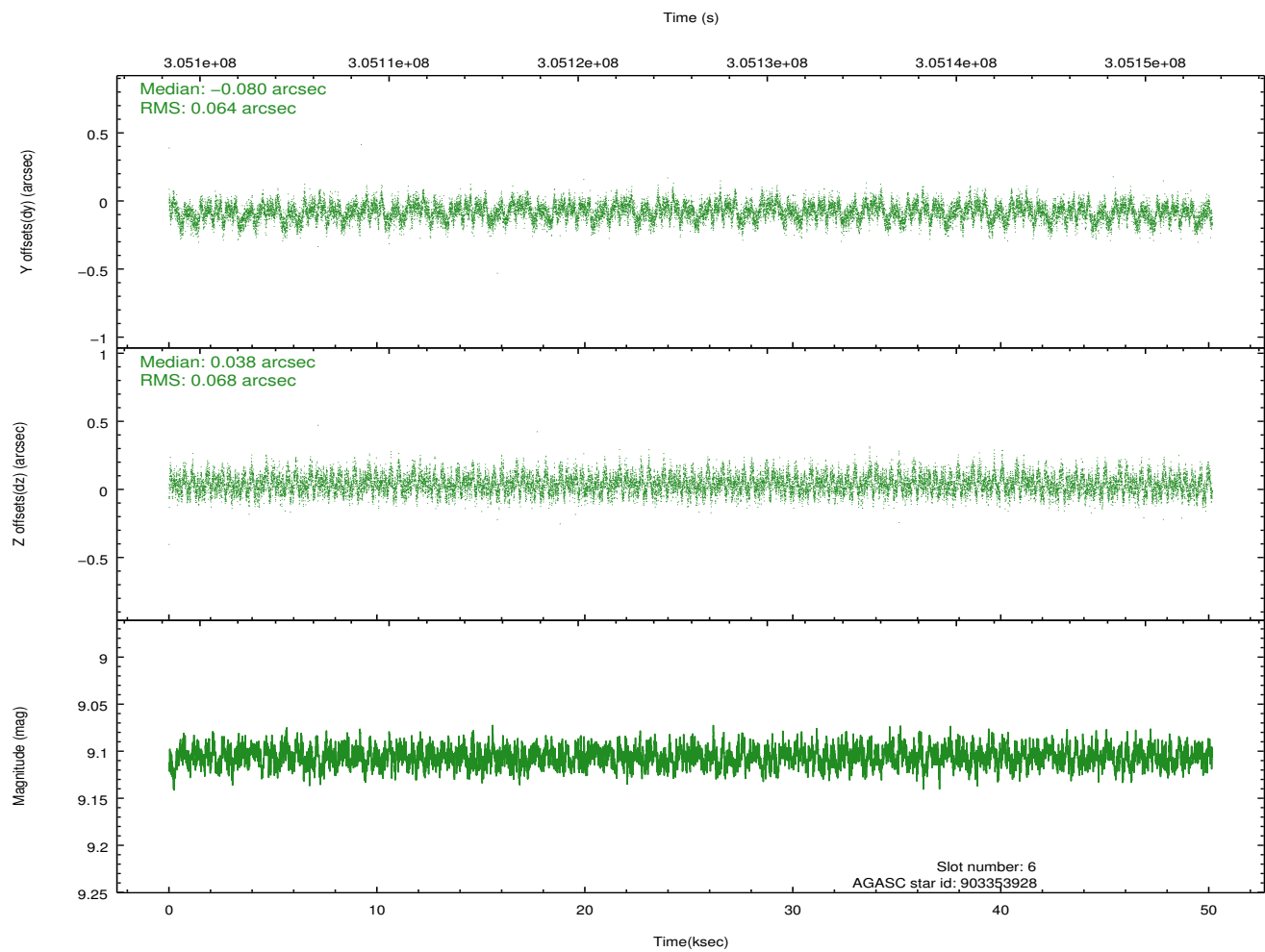
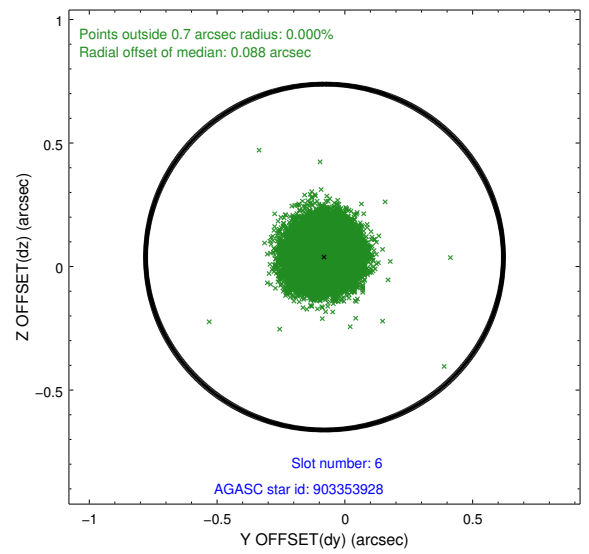
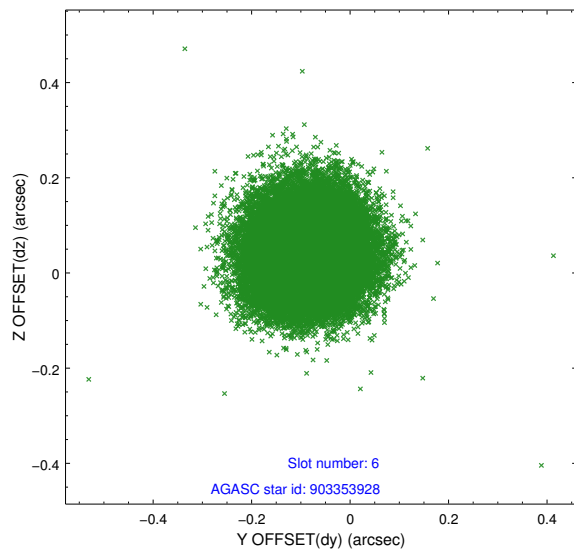
2.4.2 Slot 4



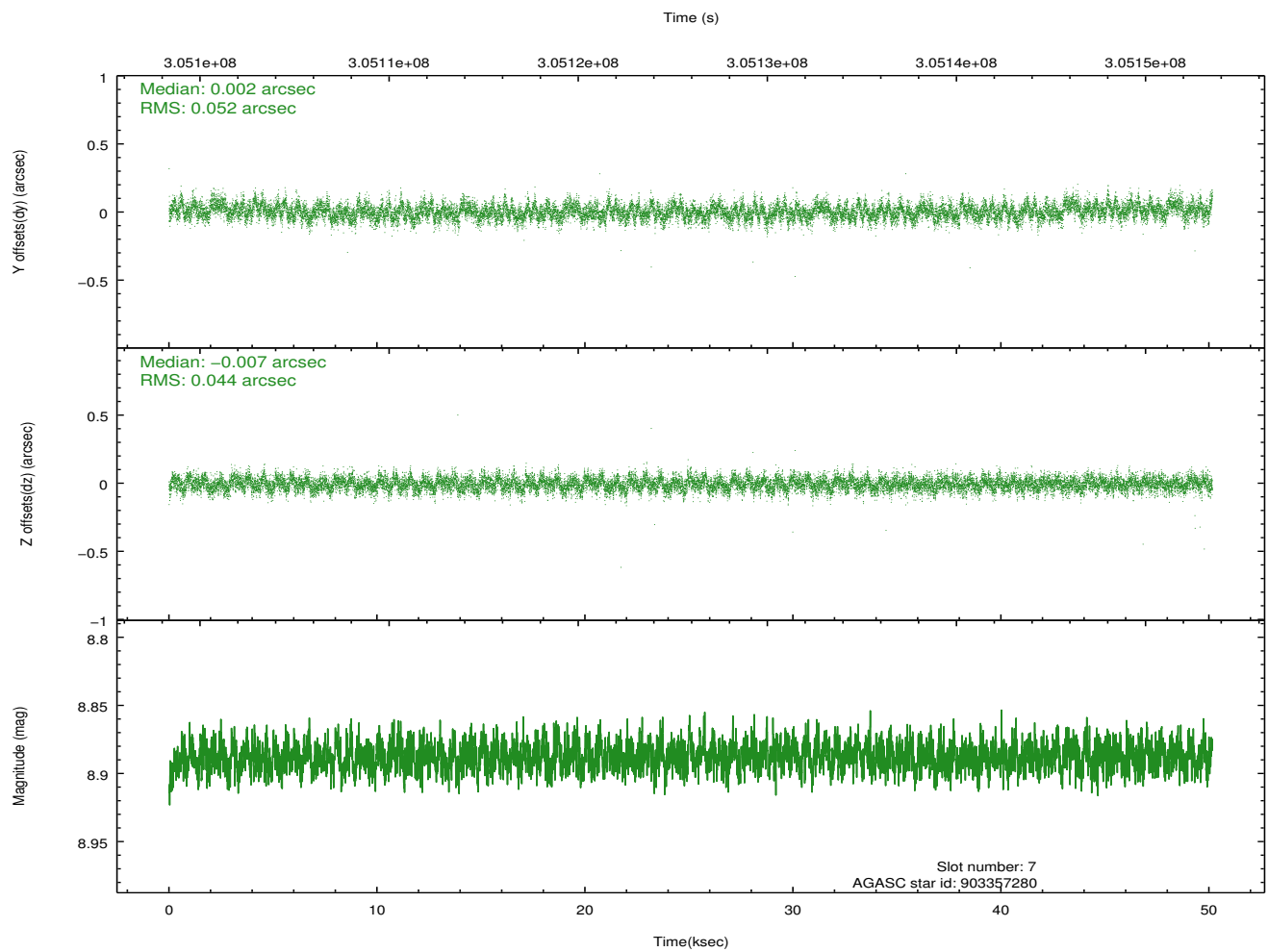
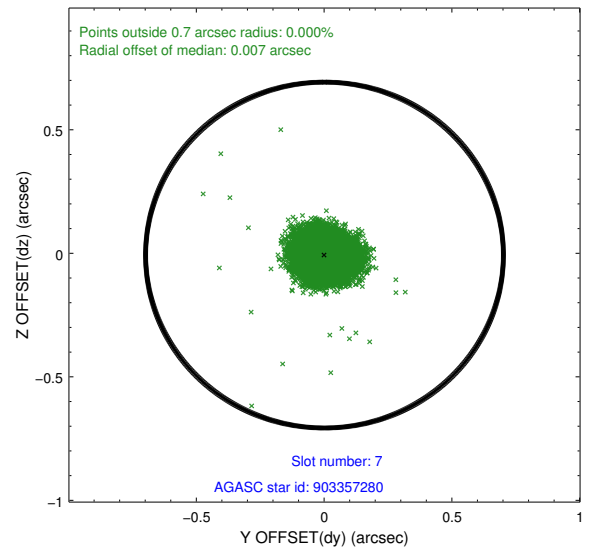
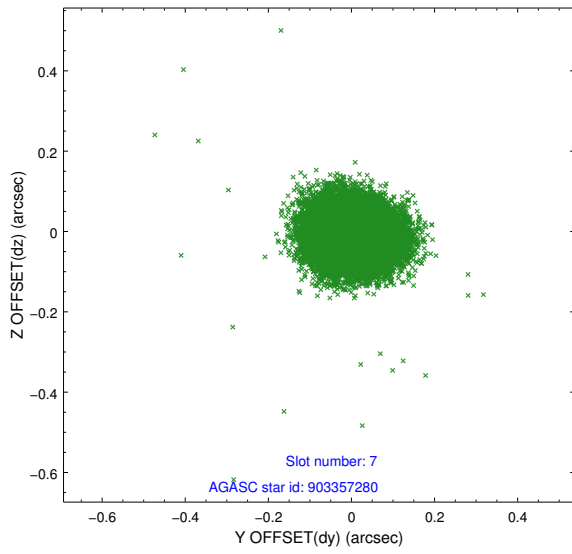
2.4.3 Slot 5



2.4.4 Slot 6

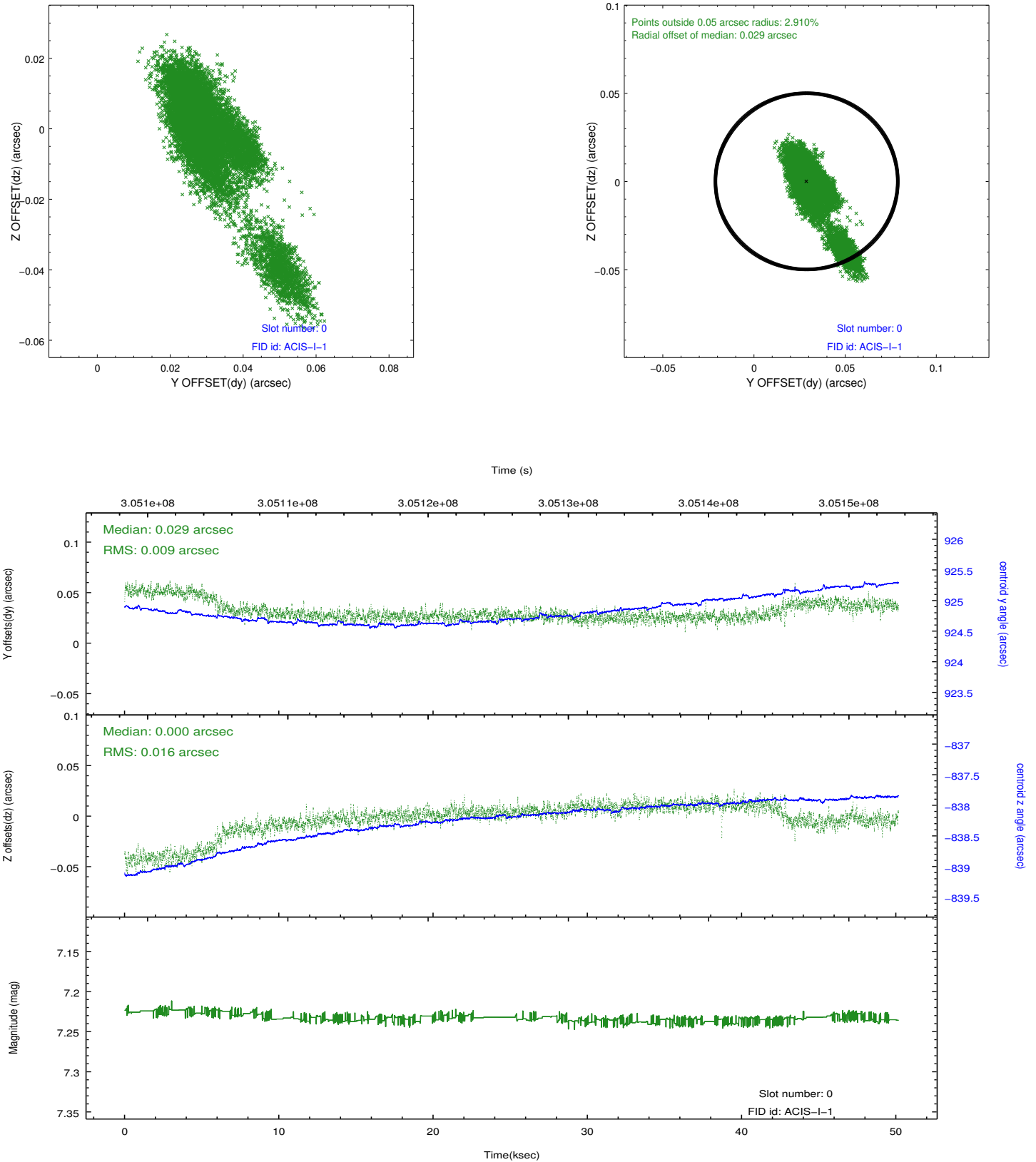


2.4.5 Slot 7

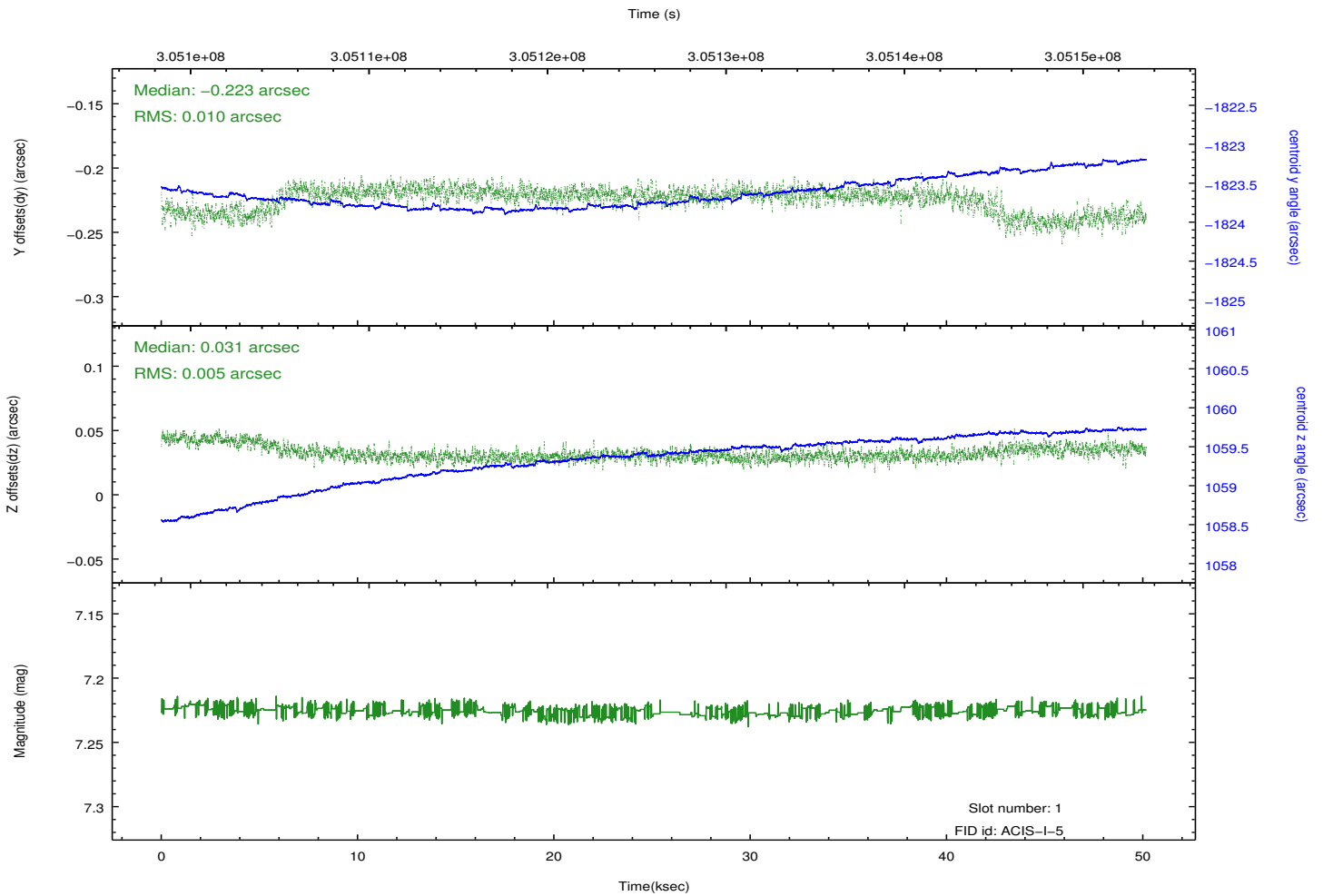
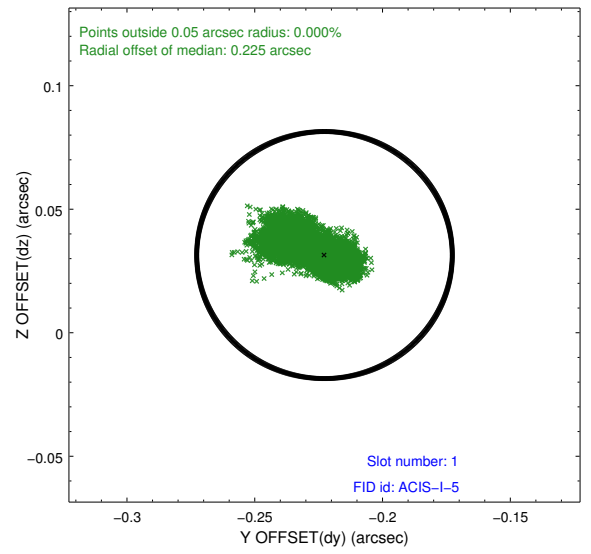
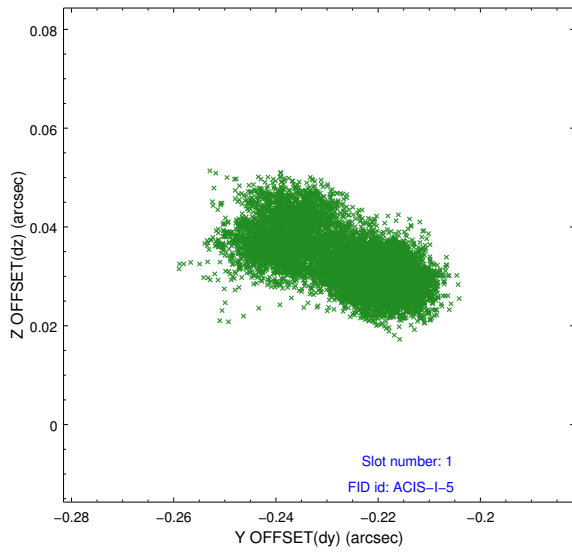


2.5 FID Slots

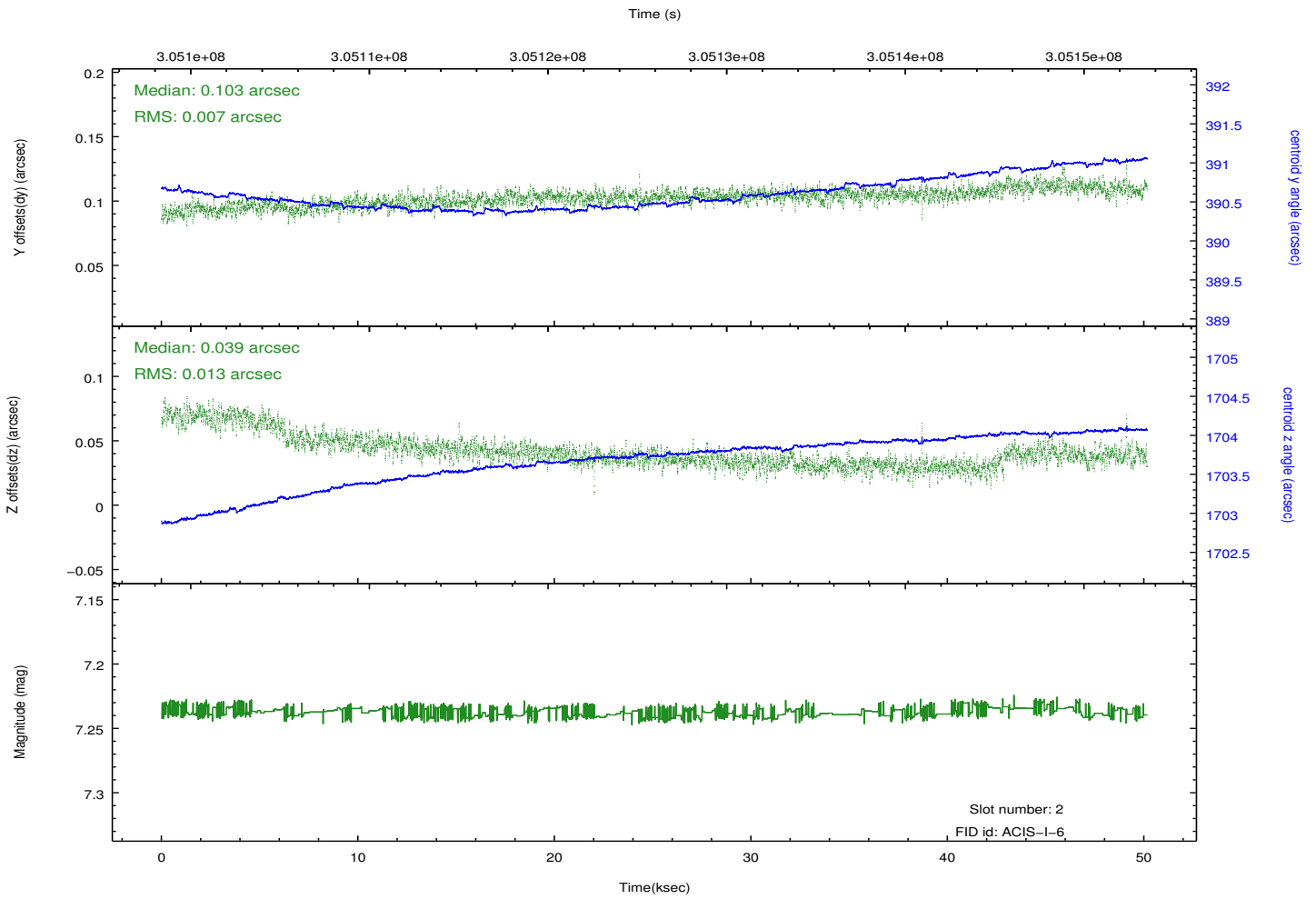
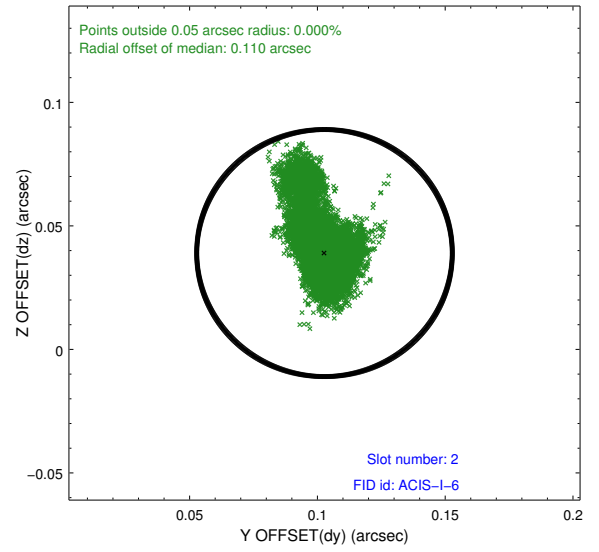
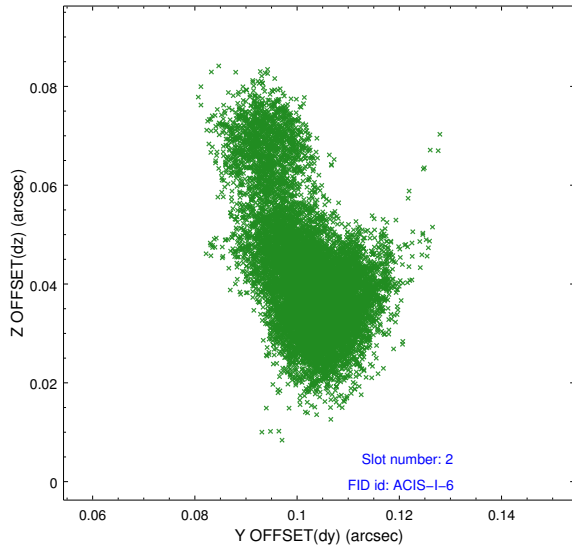
2.5.1 Slot 0



2.5.2 Slot 1



2.5.3 Slot 2



A Summary

A.1 Status

V&V Scientist	Jen Lauer
V&V Date (YYYY-MM-DD)	2012.05.02
V&V Edition	1
V&V Disposition and Status	OK
V&V Charge Time	50.1454774

A.2 Comments