

V&V Reference Report

L2 ASCDS Version : 8.4.4

Observation 7926 - L2 Version 2
Chandra X-Ray Center

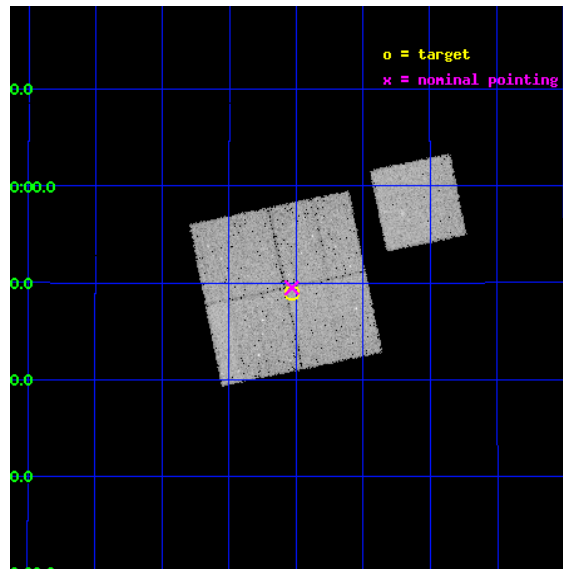
L2 Processing Date : May 7 2012

Contents

1	Front	2
2	OBI	3
2.1	OBI	3
2.1.1	Images	3
2.1.2	Bias	3
2.1.3	Parameters	4
2.1.4	Events	4
2.2	Compared Parameters	5
2.3	Aspect	6
2.4	Star Slots	9
2.4.1	Slot 3	9
2.4.2	Slot 4	10
2.4.3	Slot 5	11
2.4.4	Slot 6	12
2.4.5	Slot 7	13
2.5	FID Slots	14
2.5.1	Slot 0	14
2.5.2	Slot 1	15
2.5.3	Slot 2	16
A	Summary	17
A.1	Status	17
A.2	Comments	17

1 Front

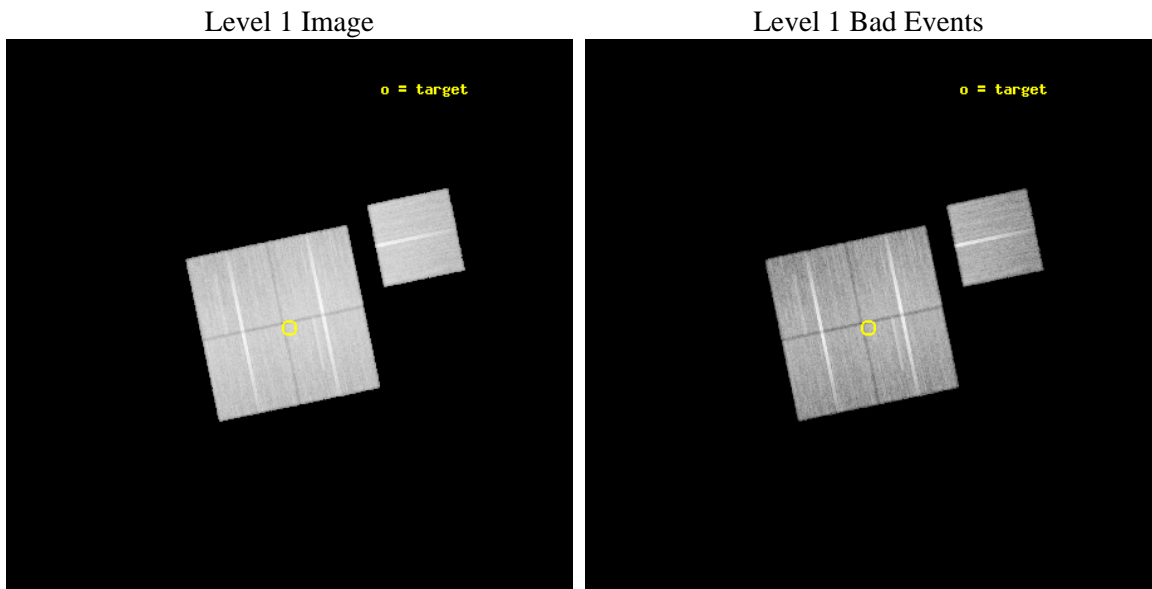
seq_num	800644	Sequence number
obs_id	7926	Observation id
title	A Complete Baryon Census in a Nearby Galaxy Group	Proposal title
observer	Dr. John Mulchaey	Principal investigator
object	NGC2563-P2	Source name
dtycycle	0	
cycle	P	events from which exps? Prim/Second/Both
ra_targ	125.38375	Observer's specified target RA [deg]
dec_targ	20.816944	Observer's specified target Dec [deg]
ra_nom	125.38292402122	Nominal RA [deg]
dec_nom	20.825004299161	Nominal Dec [deg]
roll_nom	78.204954902492	Nominal Roll [deg]
revision	2	Processing version of data
ontime	30034.452317834	Sum of GTIs [s]
livetime	29642.030087259	Livetime [s]
ontime0	30034.329167962	Sum of GTIs [s]
ontime1	30040.652238369	Sum of GTIs [s]
ontime2	30034.411337316	Sum of GTIs [s]
ontime3	30034.452317834	Sum of GTIs [s]
ontime6	30034.288157761	Sum of GTIs [s]
l2events	103579	Number of level 2 events



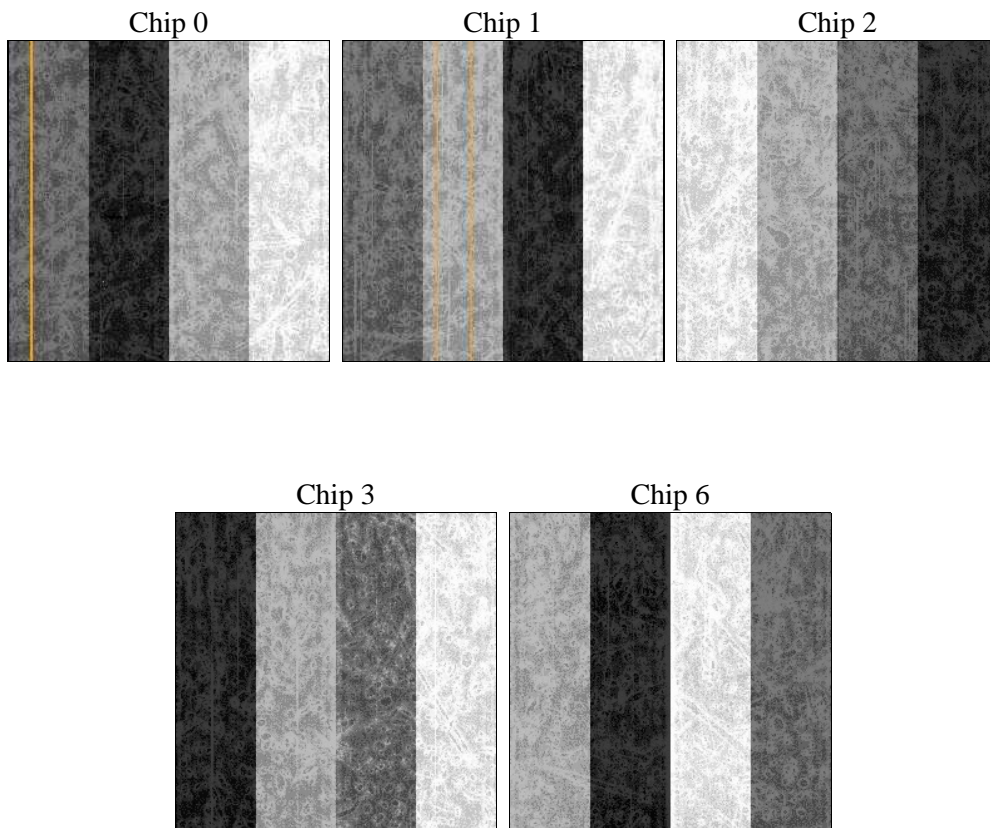
2 OBI

2.1 OBI

2.1.1 Images



2.1.2 Bias



2.1.3 Parameters

obi_num	1	Obi number	sched_exp_time	30000.000000	[s] Scheduled observation exposure time
ascdsver	8.4.4	Processing system revision	ontime	30034.452317834	Sum of GTIs [s]
caldbver	4.4.9	 	ontime0	30034.329167962	Sum of GTIs [s]
date	2012-05-07T03:10:37	Date and time of file creation	ontime1	30040.652238369	Sum of GTIs [s]
revision	2	Processing version of data	ontime2	30034.411337316	Sum of GTIs [s]
			ontime3	30034.452317834	Sum of GTIs [s]
			ontime6	30034.288157761	Sum of GTIs [s]
			l1events	1217345	Number of level 1 events

2.1.4 Events

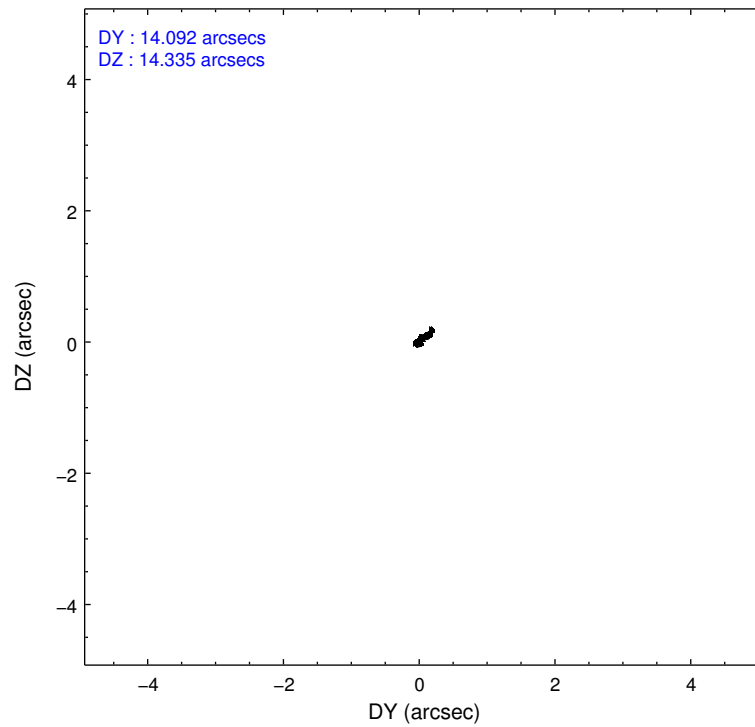
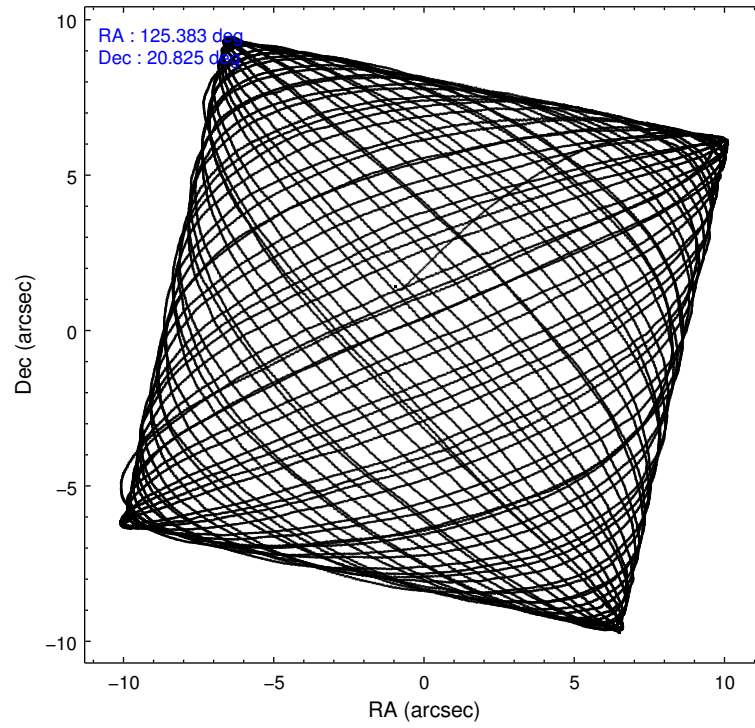
	ccd 0	ccd 1	ccd 2	ccd 3	ccd 6
level 1 events	230308	231934	266211	245211	243681
rejected events	206183	204752	241990	222438	217467
rejected %	89%	88%	90%	90%	89%

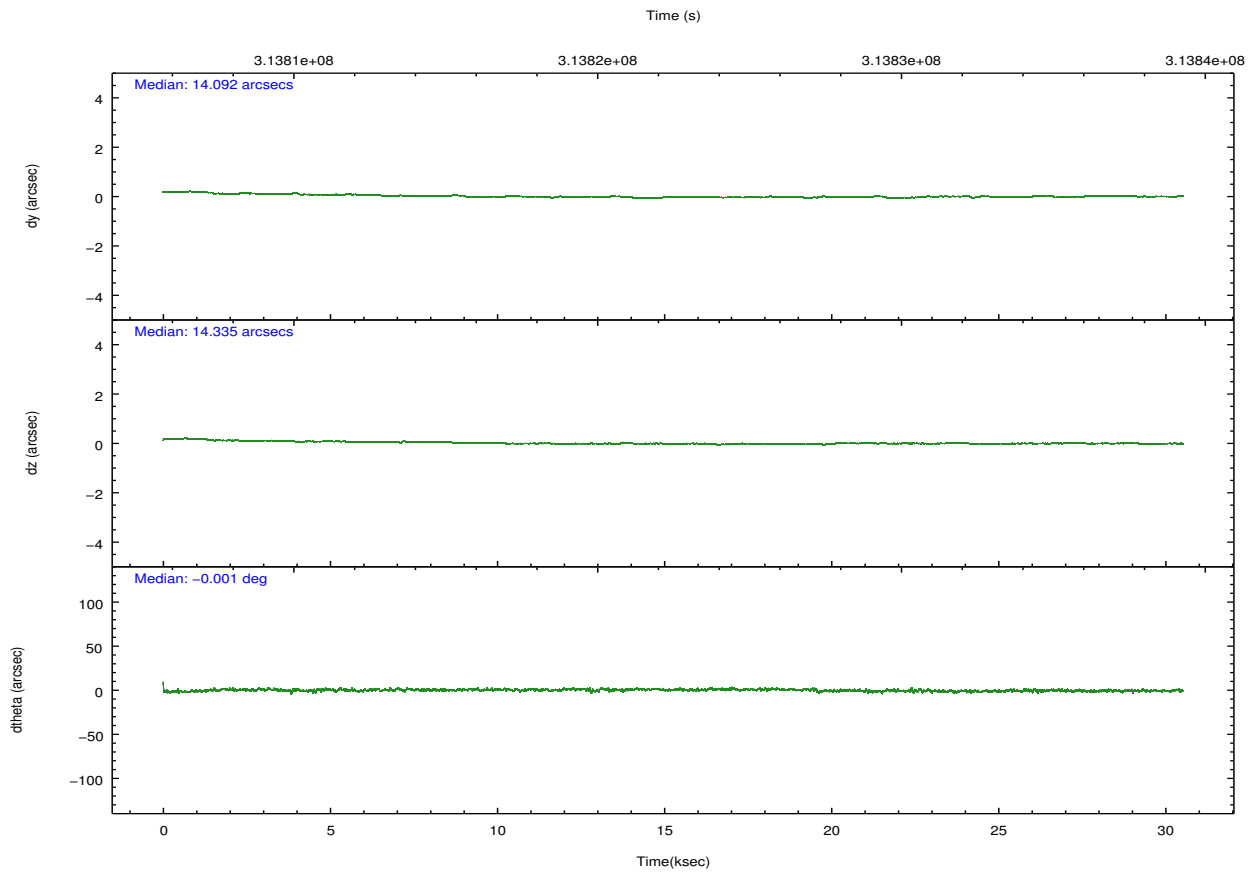
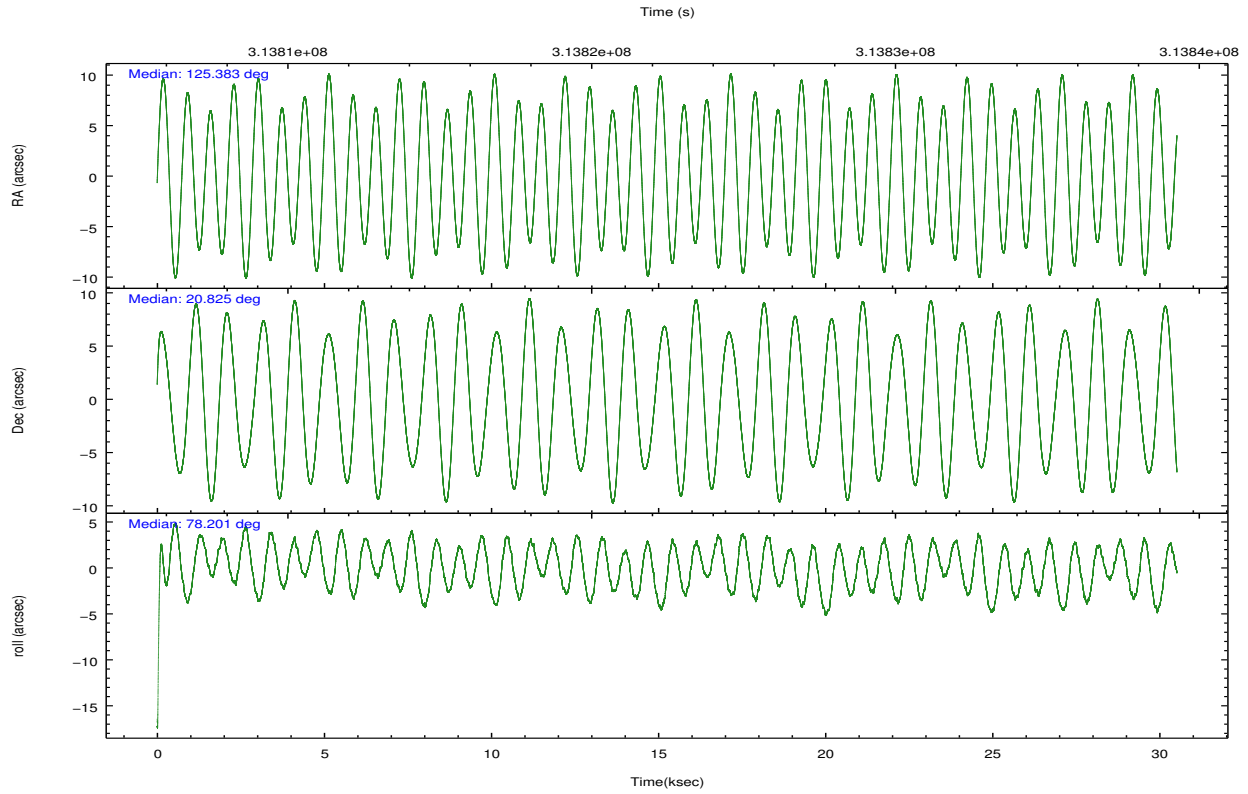
	ccd 0	ccd 1	ccd 2	ccd 3	ccd 6
grade 0 events	8302	9827	9002	8008	9966
	3%	4%	3%	3%	4%
grade 1 events	120	113	135	116	142
	0%	0%	0%	0%	0%
grade 2 events	5817	6116	5665	4959	5566
	2%	2%	2%	2%	2%
grade 3 events	2750	2849	2521	2622	2675
	1%	1%	0%	1%	1%
grade 4 events	2606	2880	2616	2614	2758
	1%	1%	0%	1%	1%
grade 5 events	8498	9096	8119	9797	9745
	3%	3%	3%	3%	3%
grade 6 events	4654	5523	4423	4570	5255
	2%	2%	1%	1%	2%
grade 7 events	197561	195530	233730	212525	207574
	85%	84%	87%	86%	85%

2.2 Compared Parameters

Parameter	Planned	Actual	Parameter	Planned	Actual
Instrument	ACIS	ACIS	Obspar format version number	7	7
Detector	ACIS-01236	ACIS-01236	Obspar file type	PREDICTED	ACTUAL
Grating	NONE	NONE	Obspar update status	NONE	UPDATED
Data mode	VFAINT	VFAINT	CCD I0 on	Y	Y
Observation mode	POINTING	POINTING	CCD I1 on	Y	Y
[deg] Pointing RA	125.392223	125.3829240212243	CCD I2 on	Y	Y
[deg] Pointing Dec	20.798898	20.82500429916104	CCD I3 on	Y	Y
[deg] Pointing Roll	77.992968	78.20495490249181	CCD S0 on	N	N
[mm] SIM focus pos	-0.782348	-0.7809083437167272	CCD S1 on	N	N
[mm] SIM defocus	0	0.001439871863259334	CCD S2 on	O1	Y
[mm] SIM translation stage pos	-233.592463	-233.5874344608287	CCD S3 on	N	N
[mm] SIM translation stage offset	0	-0.005018542100998502	CCD S4 on	N	N
[s] Observation start time (MET)	313807743.184000	313806646.21938	CCD S5 on	N	N
Observation start date	2007-12-12T00:47:58	2007-12-12T00:30:46	Number of optional ACIS chips dropped	0	0
[s] Observation end time (MET)	313837743.184000	313838051.1959	On-chip summing requested	N	N
Observation end date	2007-12-12T09:07:58	2007-12-12T09:14:11	Subarray requested	NONE	NONE
Read mode	TIMED	TIMED	Alternating exposures requested	N	N
			[s] Primary exposure time	0.000000	3.1

2.3 Aspect



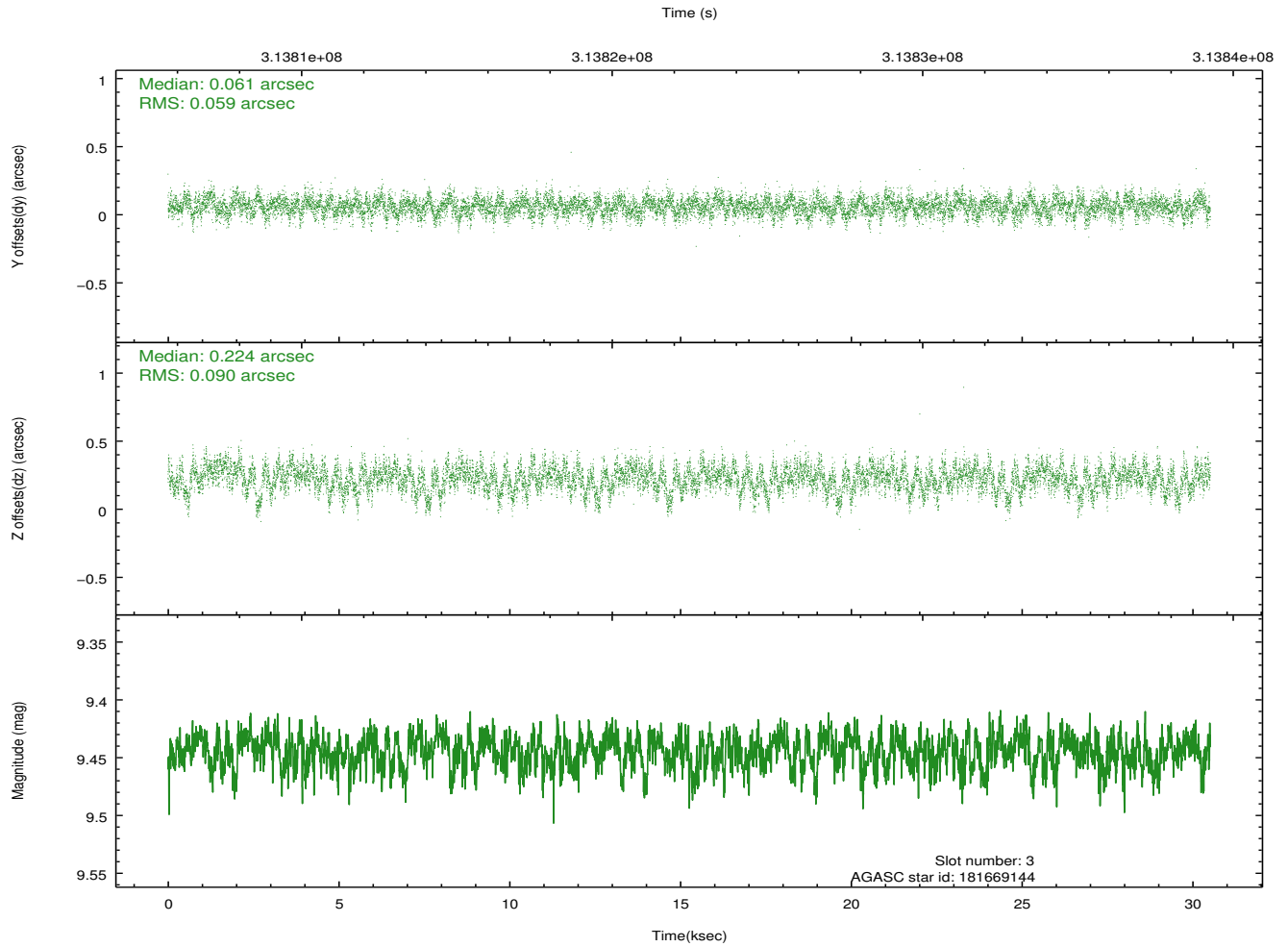
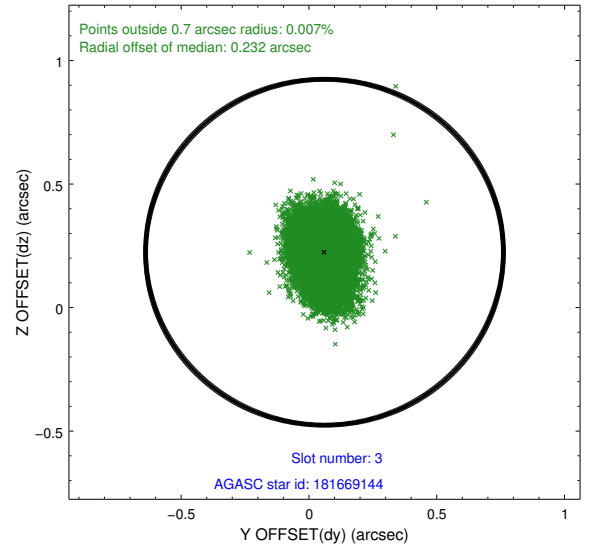
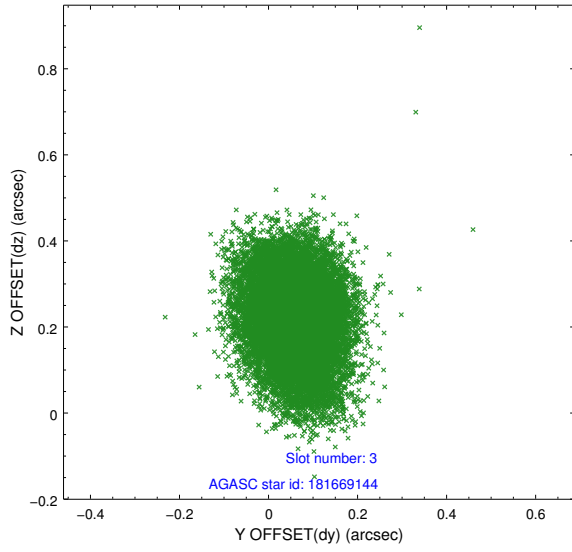


Slot Statistics

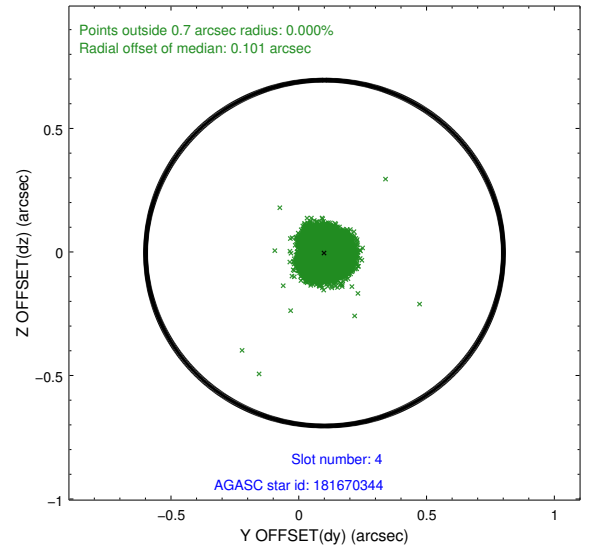
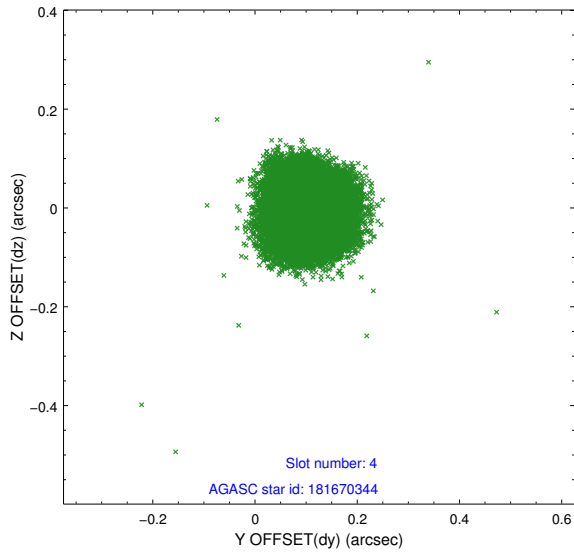
slot	status	id	mag	n_pts	med_dy	med_dz	dr1	dr2	ra	dec	mean_y	mean_z
0	FID	ACIS-I-1	7.24	7442	-0.039	0.062	0.011	0.019	0.000000	0.000000	925.32	-837.89
1	FID	ACIS-I-2	7.14	7443	-0.169	-0.089	0.013	0.020	0.000000	0.000000	-768.86	-844.49
2	FID	ACIS-I-4	7.15	7442	0.109	0.096	0.011	0.020	0.000000	0.000000	2145.35	1061.90
3	GUIDE	181669144	9.44	14871	0.061	0.224	0.113	0.189	125.735610	20.569434	-565.81	-1303.45
4	GUIDE	181670344	7.88	14883	0.101	-0.004	0.073	0.107	124.942618	20.336943	-1940.24	1138.87
5	GUIDE	182195136	8.57	14885	-0.058	-0.012	0.072	0.118	124.931899	20.918080	99.59	1603.89
6	GUIDE	182202936	7.81	14886	-0.167	-0.224	0.068	0.109	124.849962	21.257255	1238.18	2123.27
7	GUIDE	182203368	9.54	14843	0.063	0.021	0.114	0.183	125.240915	21.261724	1524.52	843.51

2.4 Star Slots

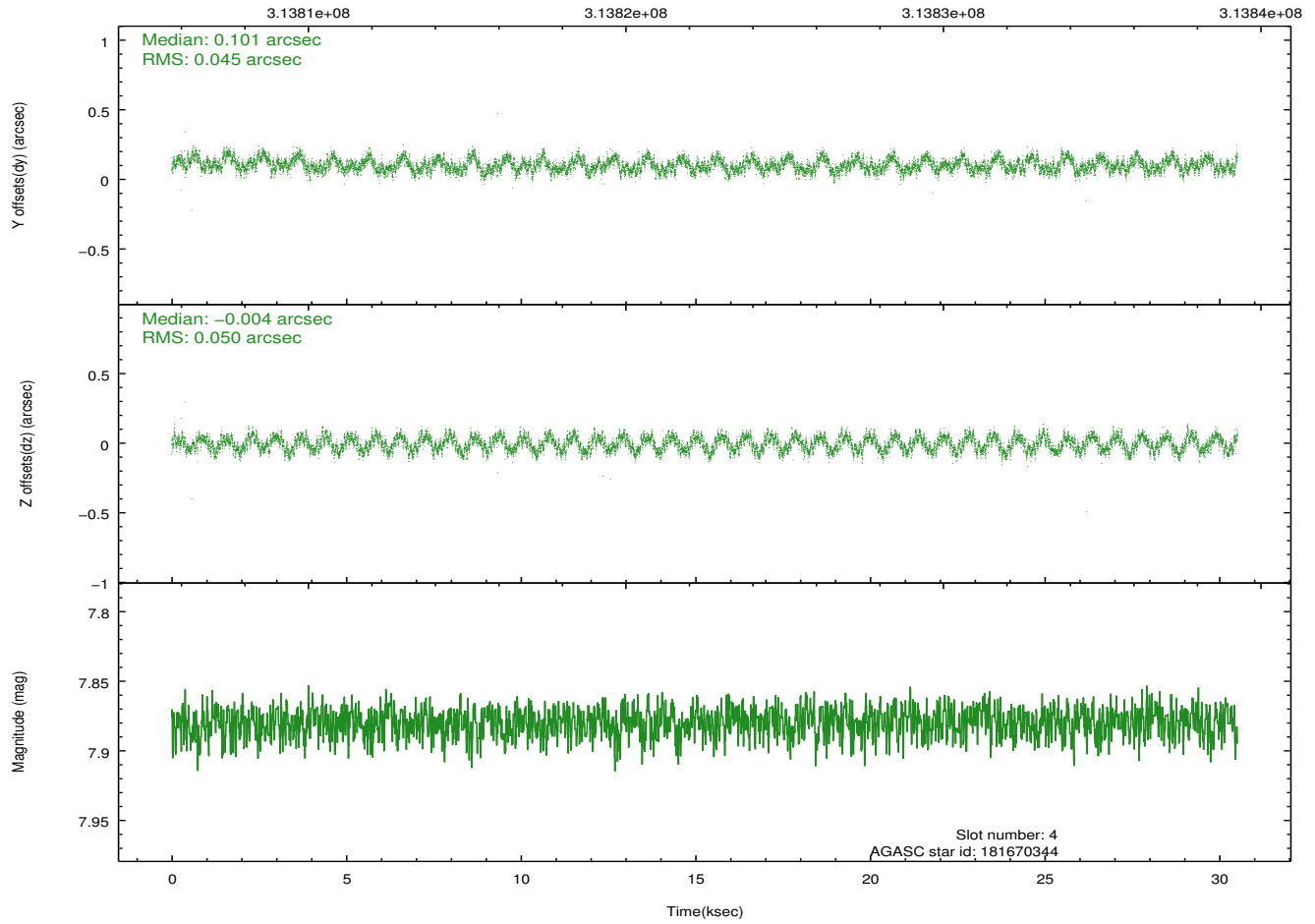
2.4.1 Slot 3



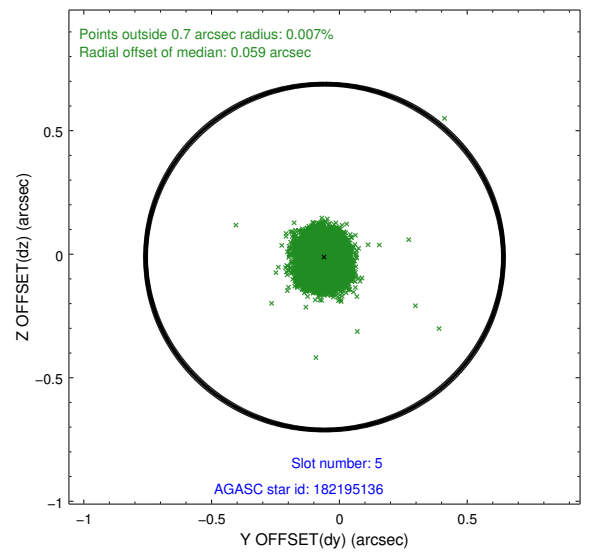
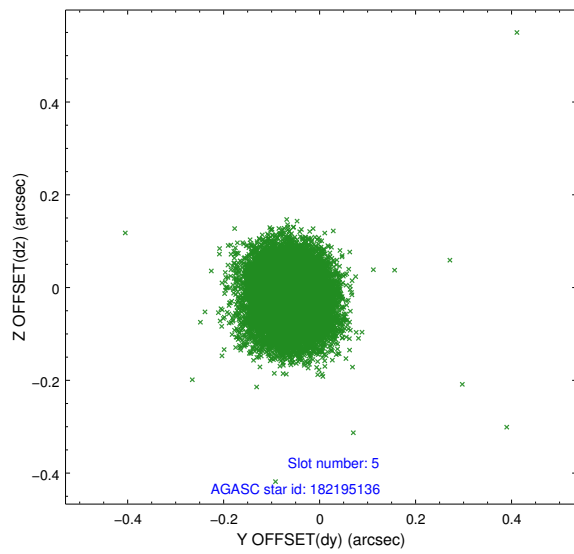
2.4.2 Slot 4



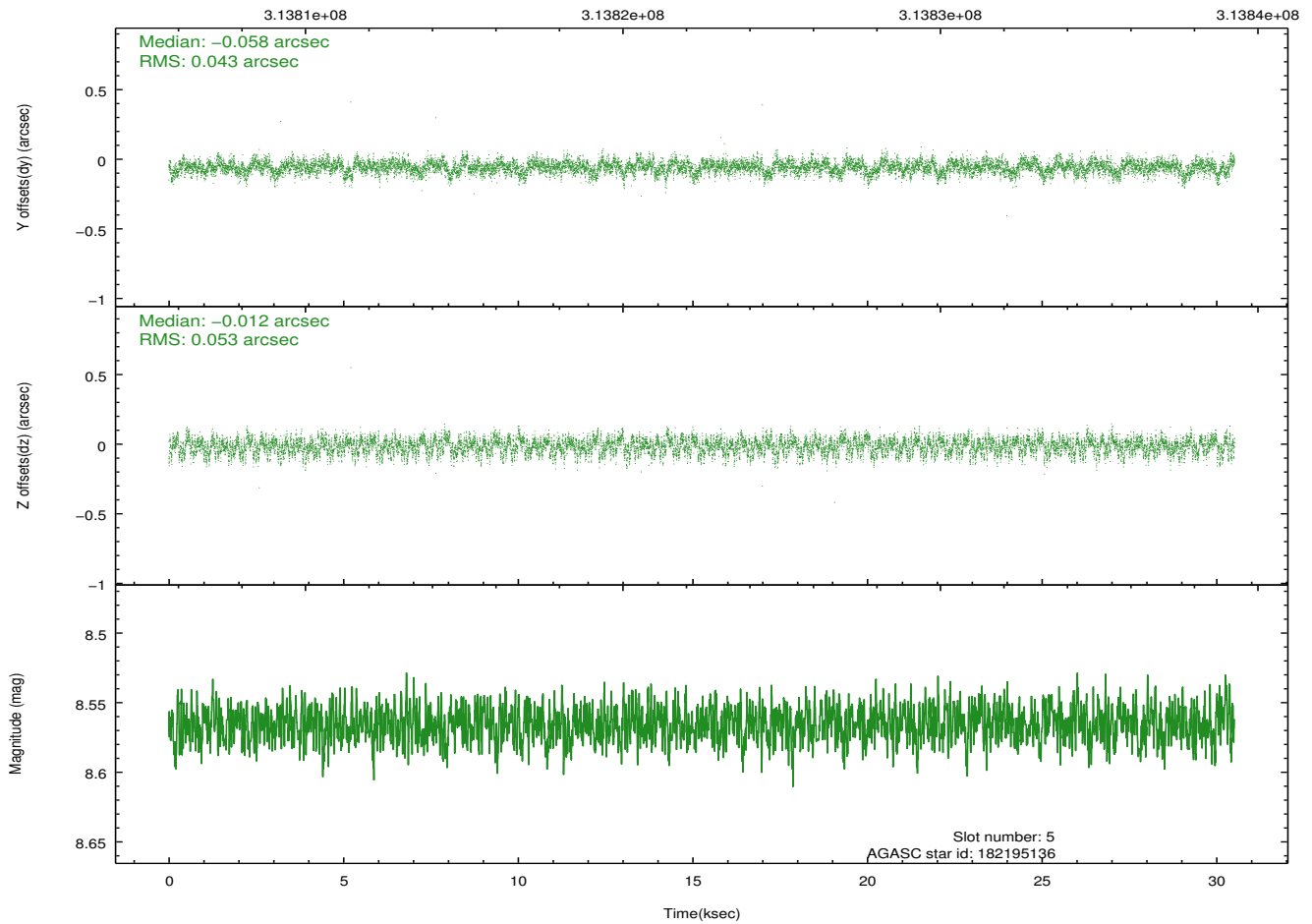
Time (s)



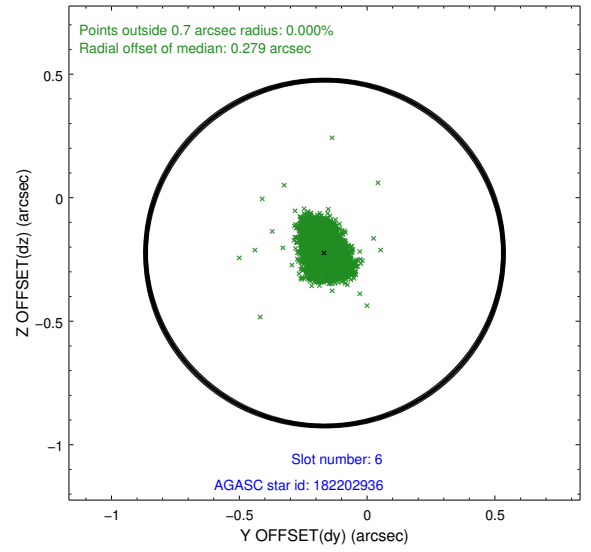
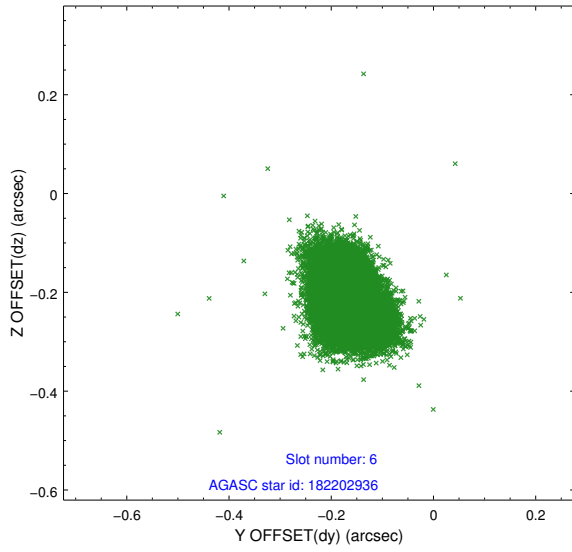
2.4.3 Slot 5



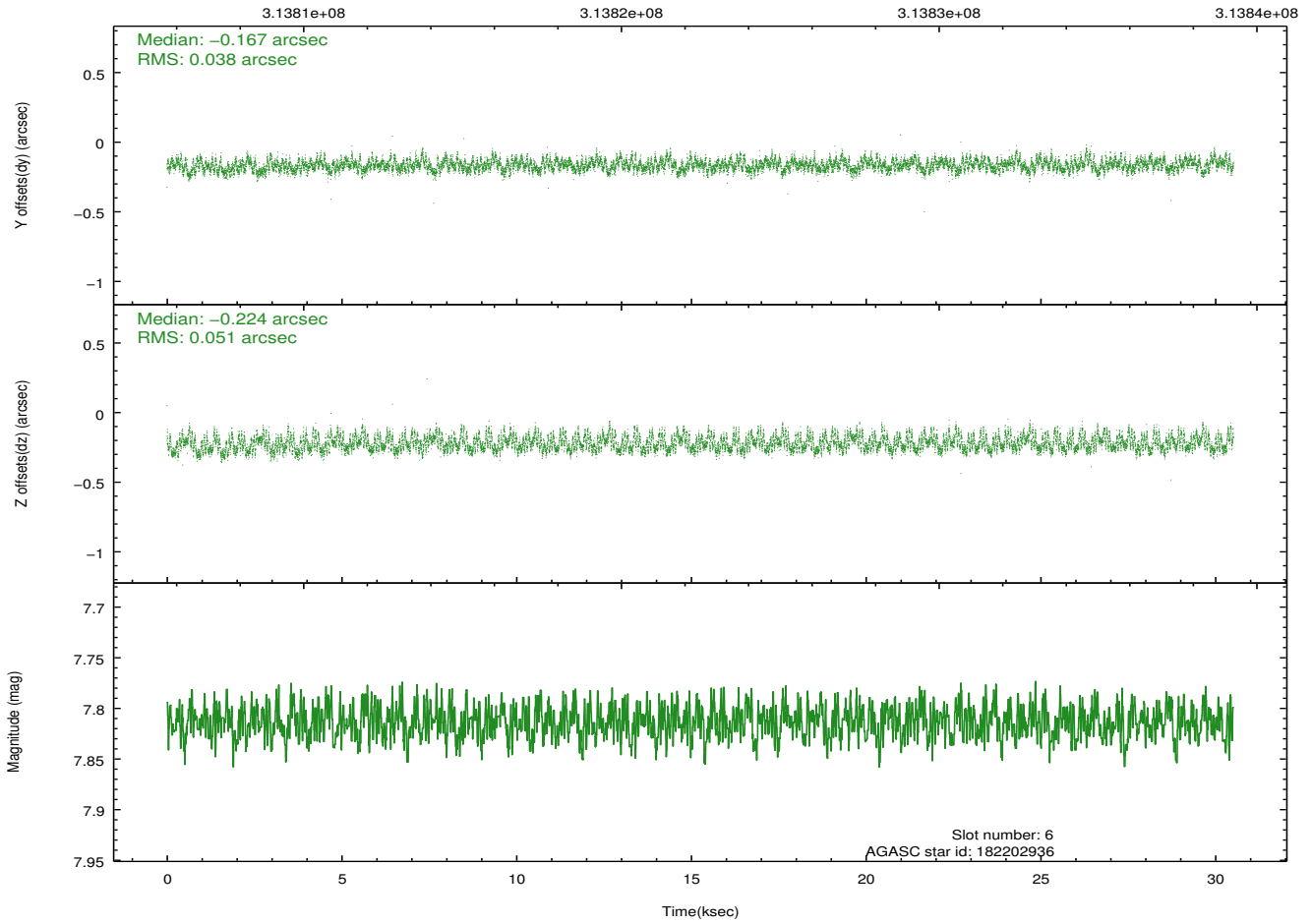
Time (s)



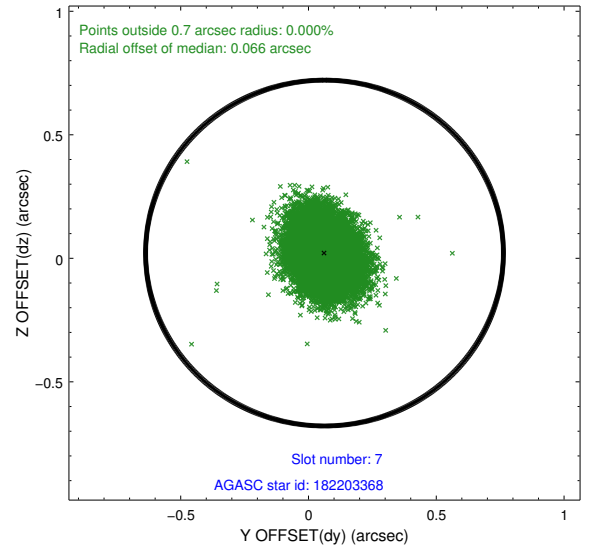
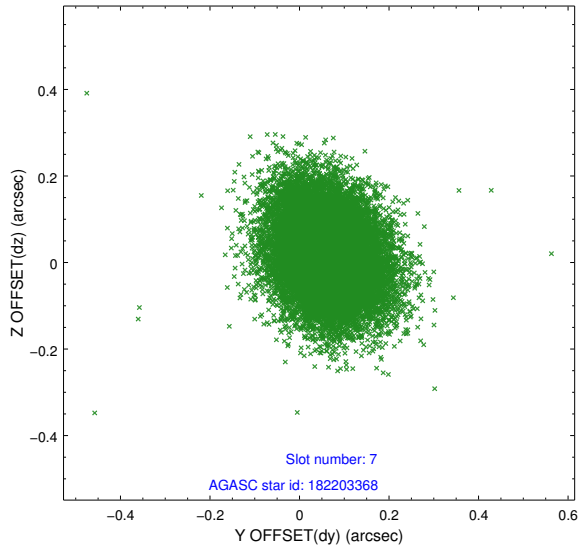
2.4.4 Slot 6



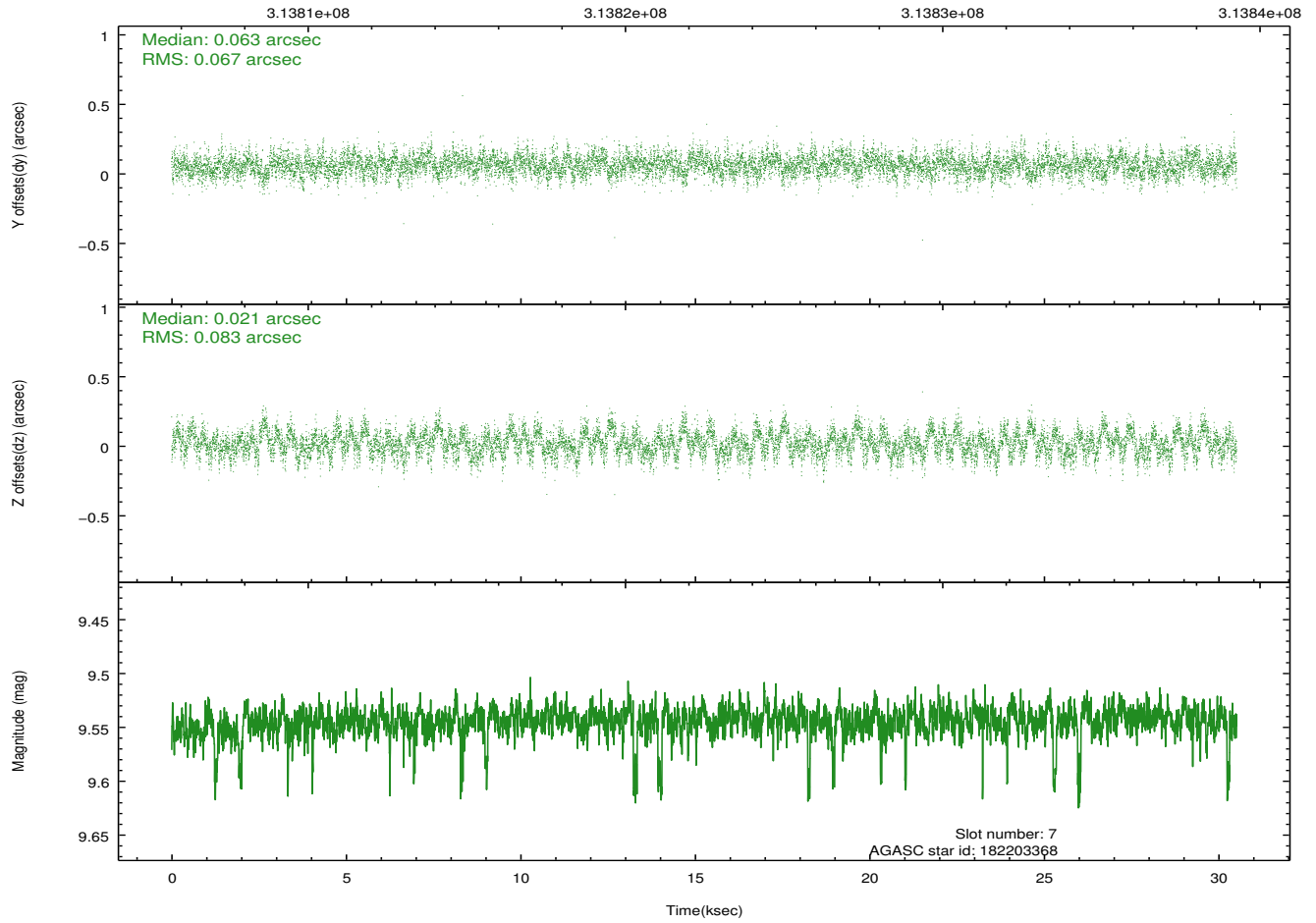
Time (s)



2.4.5 Slot 7

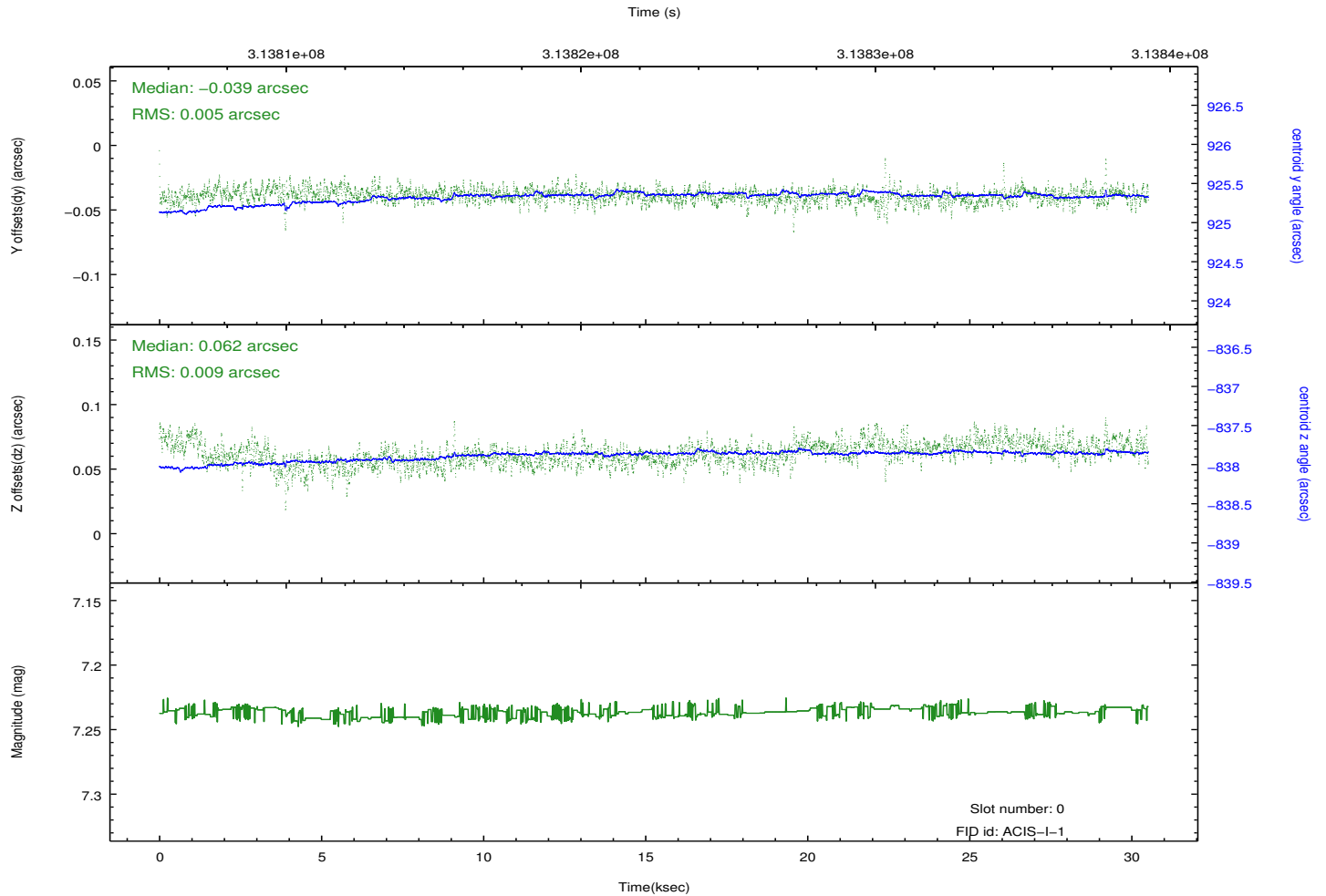
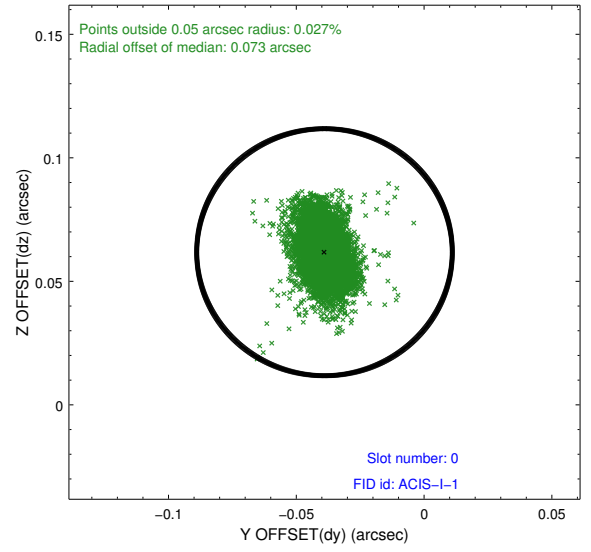
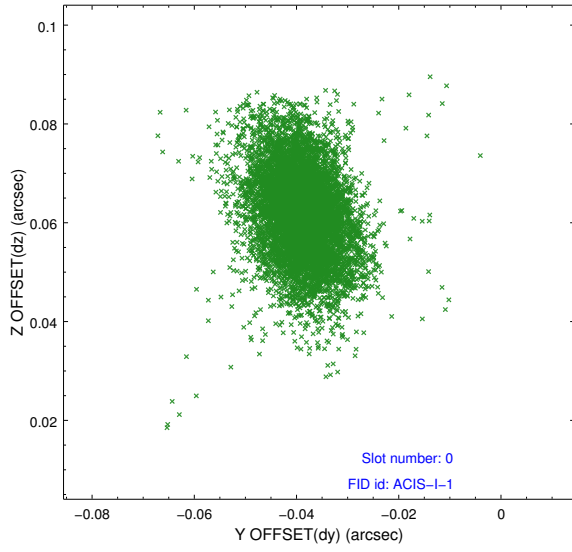


Time (s)

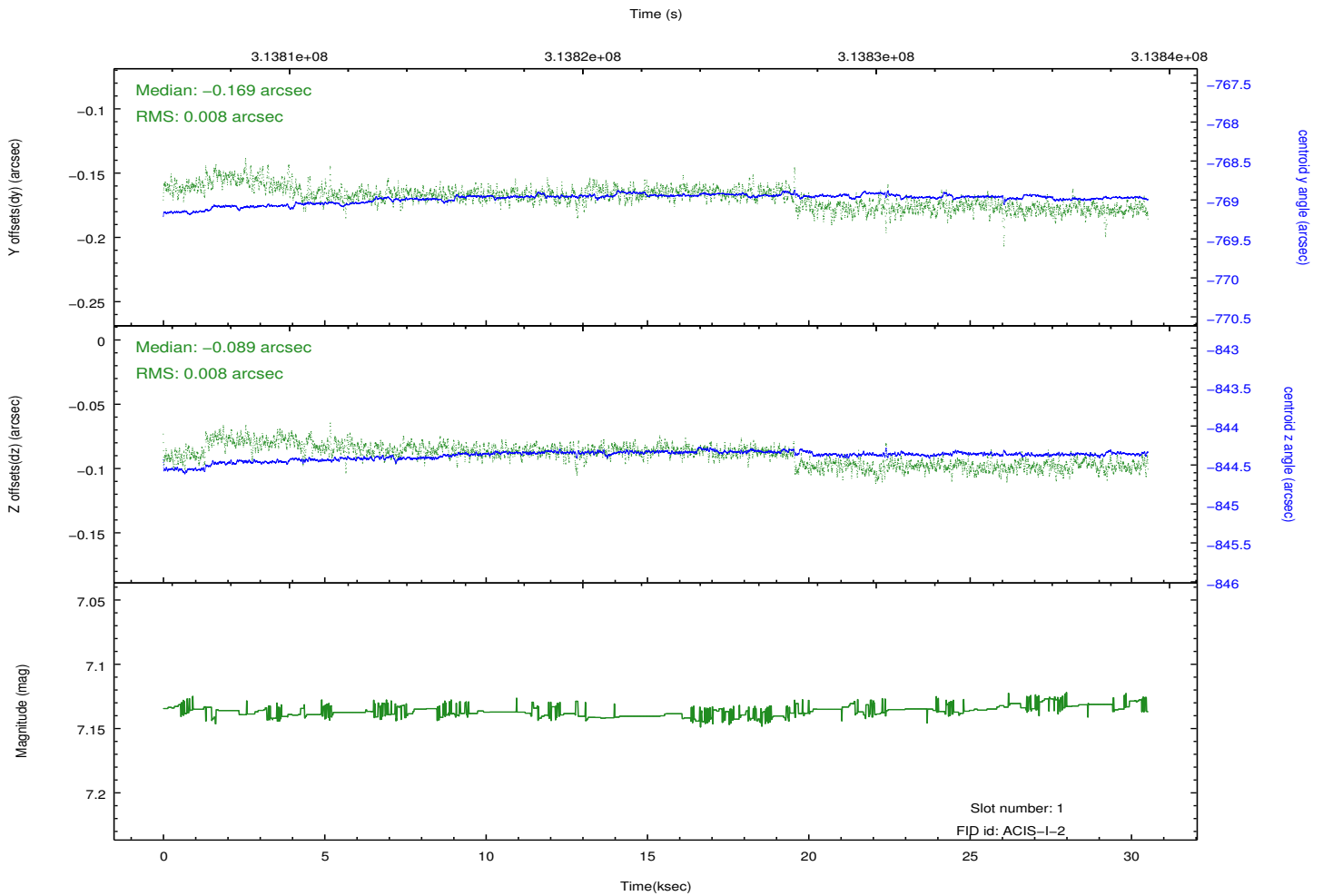
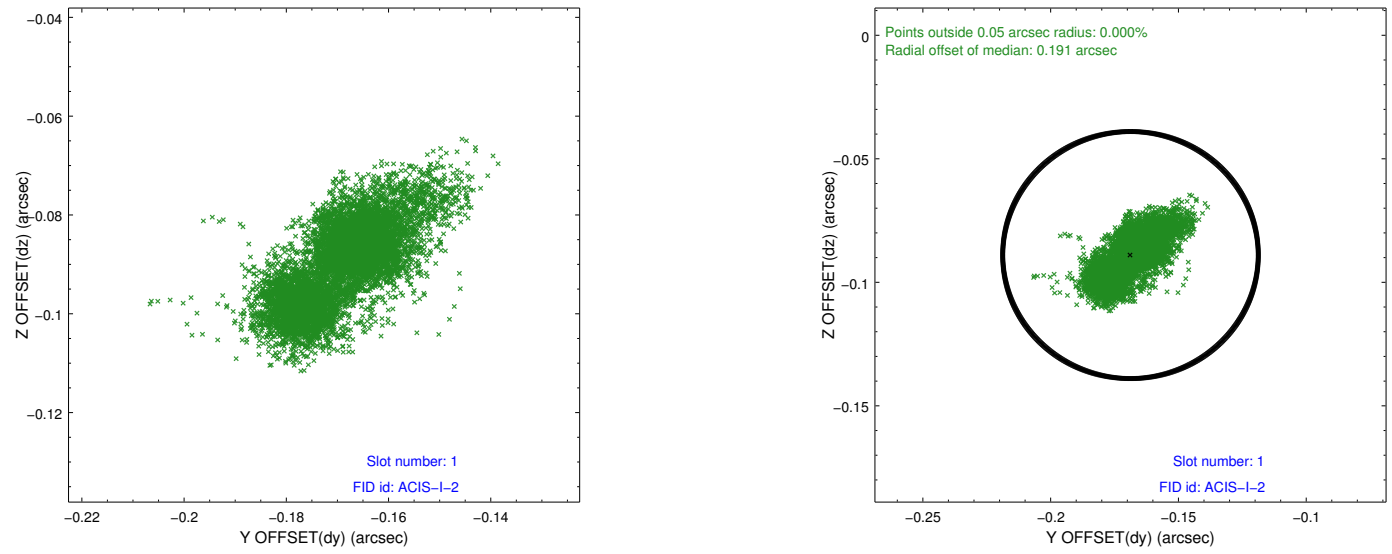


2.5 FID Slots

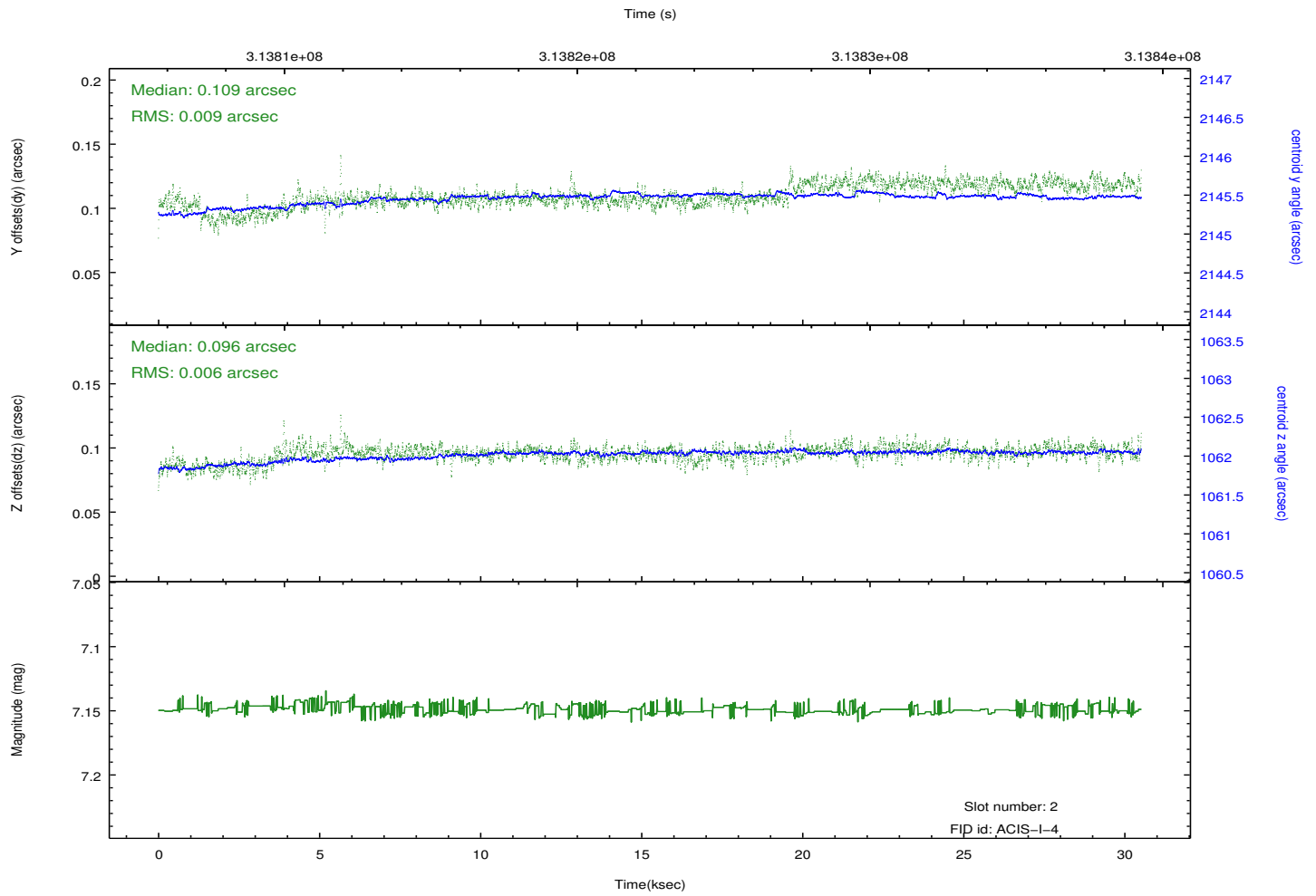
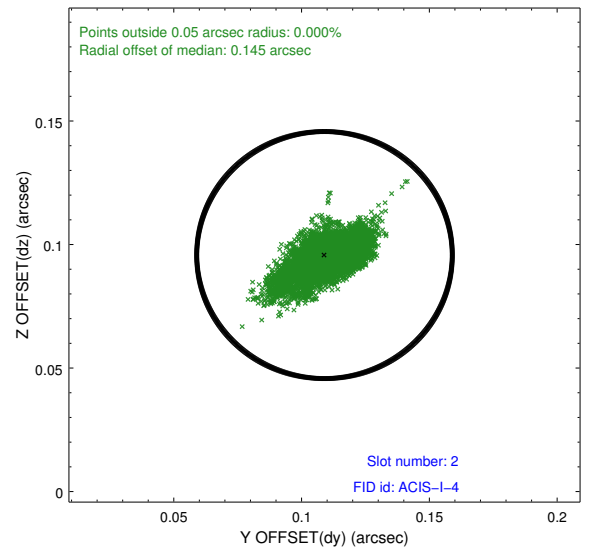
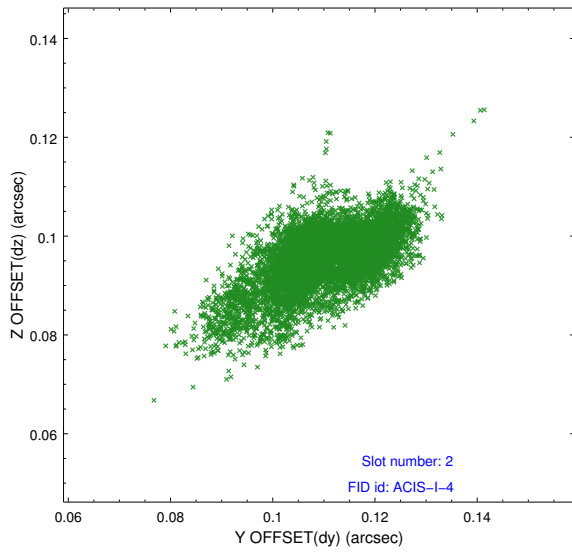
2.5.1 Slot 0



2.5.2 Slot 1



2.5.3 Slot 2



A Summary

A.1 Status

V&V Scientist	Jen Lauer
V&V Date (YYYY-MM-DD)	2012.05.08
V&V Edition	1
V&V Disposition and Status	OK
V&V Charge Time	30.0358182

A.2 Comments