

V&V Reference Report

L2 ASCDS Version : 8.4.4

Observation 7946 - L2 Version 3
Chandra X-Ray Center

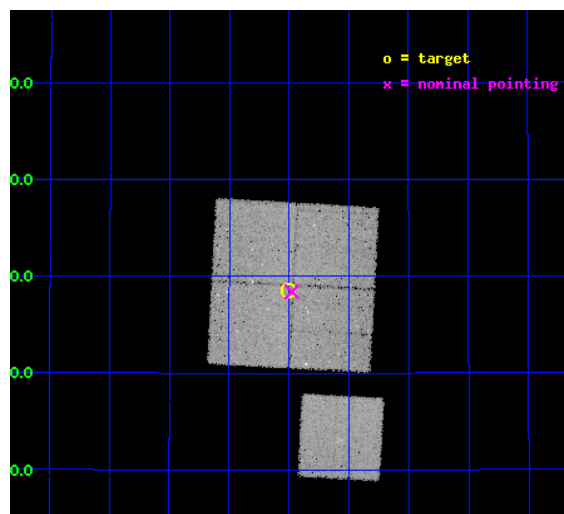
L2 Processing Date : Apr 24 2012

Contents

1	Front	2
2	OBI	3
2.1	OBI	3
2.1.1	Images	3
2.1.2	Bias	3
2.1.3	Parameters	4
2.1.4	Events	4
2.2	Compared Parameters	5
2.3	Aspect	6
2.4	Star Slots	9
2.4.1	Slot 3	9
2.4.2	Slot 4	10
2.4.3	Slot 5	11
2.4.4	Slot 6	12
2.4.5	Slot 7	13
2.5	FID Slots	14
2.5.1	Slot 0	14
2.5.2	Slot 1	15
2.5.3	Slot 2	16
A	Summary	17
A.1	Status	17
A.2	Comments	17

1 Front

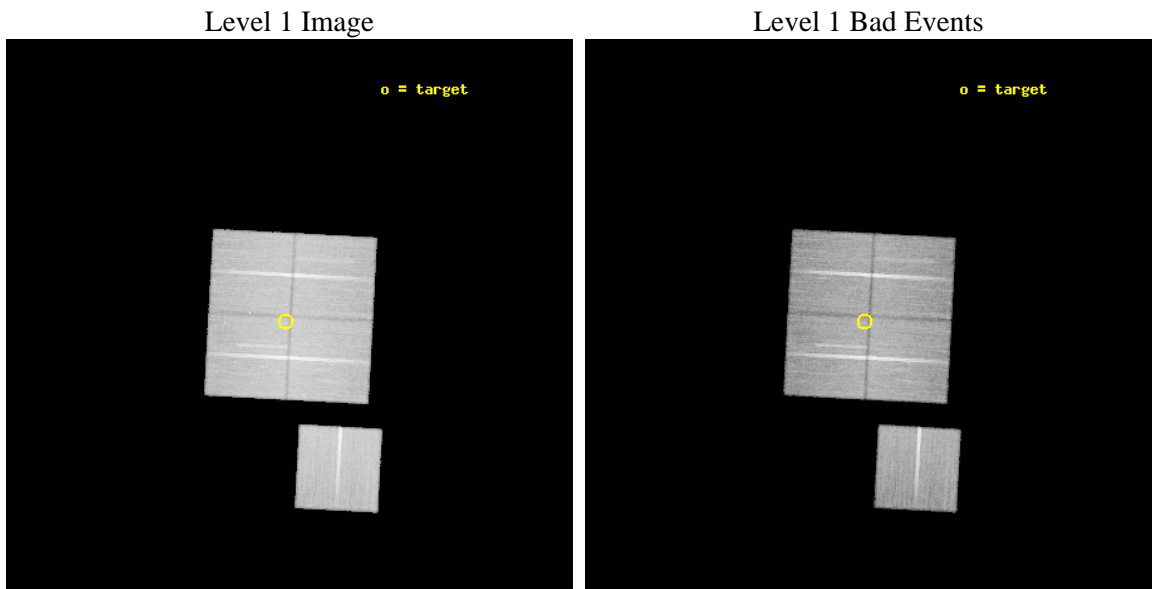
seq_num	900490	Sequence number
obs_id	7946	Observation id
title	Chandra Large Scale Survey of the NOAO Bootes Deep Field (A)	Propo
observer	Dr. Stephen Murray	Principal investigator
object	Bootes3 5	Source name
dtcycle	0	
cycle	P	events from which exps? Prim/Second/Both
ra_targ	218.50318	Observer's specified target RA [deg]
dec_targ	33.476278	Observer's specified target Dec [deg]
ra_nom	218.49409229401	Nominal RA [deg]
dec_nom	33.473475271076	Nominal Dec [deg]
roll_nom	183.05935335717	Nominal Roll [deg]
revision	3	Processing version of data
ontime	40925.001157463	Sum of GTIs [s]
livetime	40390.285888793	Livetime [s]
ontime0	40937.441948652	Sum of GTIs [s]
ontime1	40934.341988325	Sum of GTIs [s]
ontime2	40924.960097432	Sum of GTIs [s]
ontime3	40925.001157463	Sum of GTIs [s]
ontime6	40918.555016875	Sum of GTIs [s]
l2events	124773	Number of level 2 events



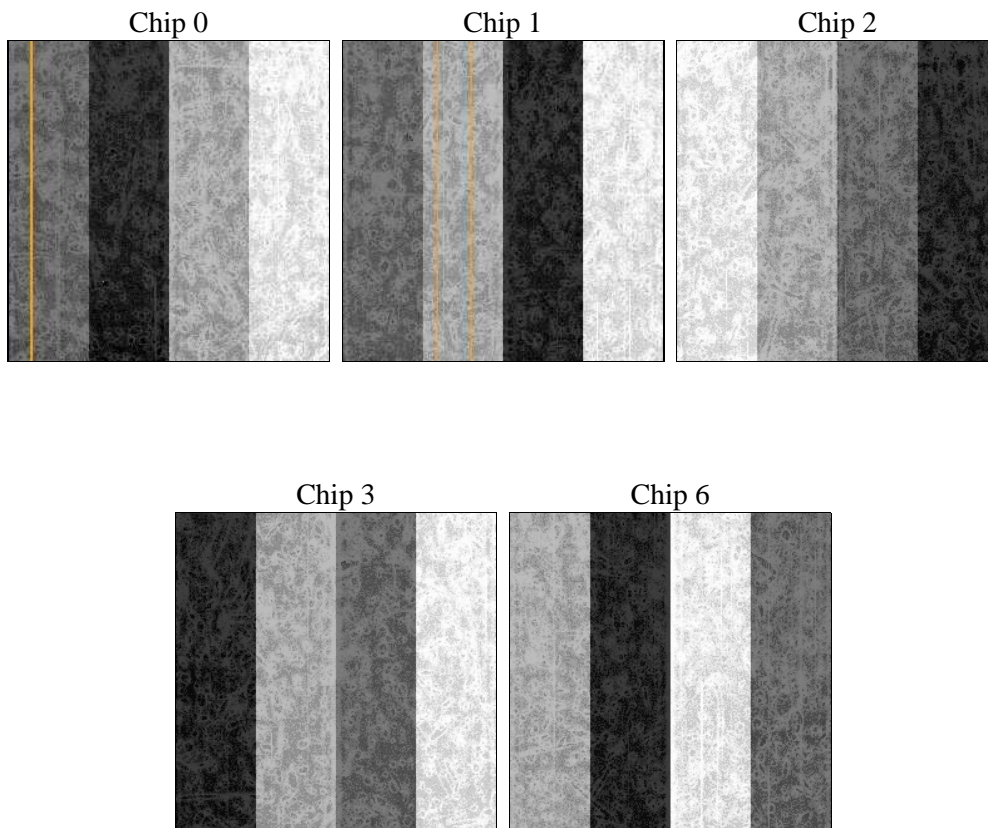
2 OBI

2.1 OBI

2.1.1 Images



2.1.2 Bias



2.1.3 Parameters

obi_num	1	Obi number	sched_exp_time	41168.000000	[s] Scheduled observation exposure time
ascdsver	8.4.4	Processing system revision	ontime	40925.001157463	Sum of GTIs [s]
caldbver	4.4.9	 	ontime0	40937.441948652	Sum of GTIs [s]
date	2012-04-24T10:29:03	Date and time of file creation	ontime1	40934.341988325	Sum of GTIs [s]
revision	3	Processing version of data	ontime2	40924.960097432	Sum of GTIs [s]
			ontime3	40925.001157463	Sum of GTIs [s]
			ontime6	40918.555016875	Sum of GTIs [s]
			l1events	1538419	Number of level 1 events

2.1.4 Events

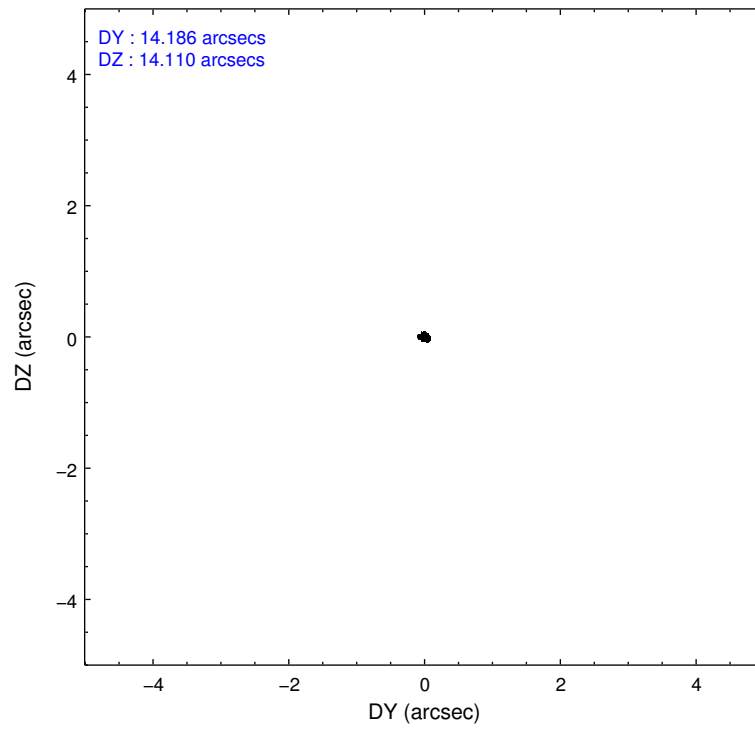
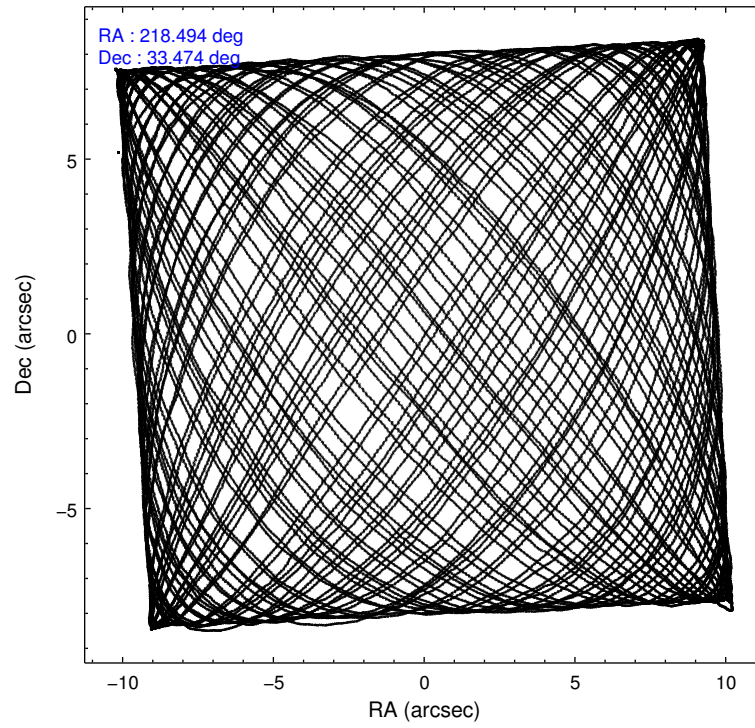
	ccd 0	ccd 1	ccd 2	ccd 3	ccd 6
level 1 events	295448	287498	335970	308633	310870
rejected events	264991	255472	306246	279447	280236
rejected %	89%	88%	91%	90%	90%

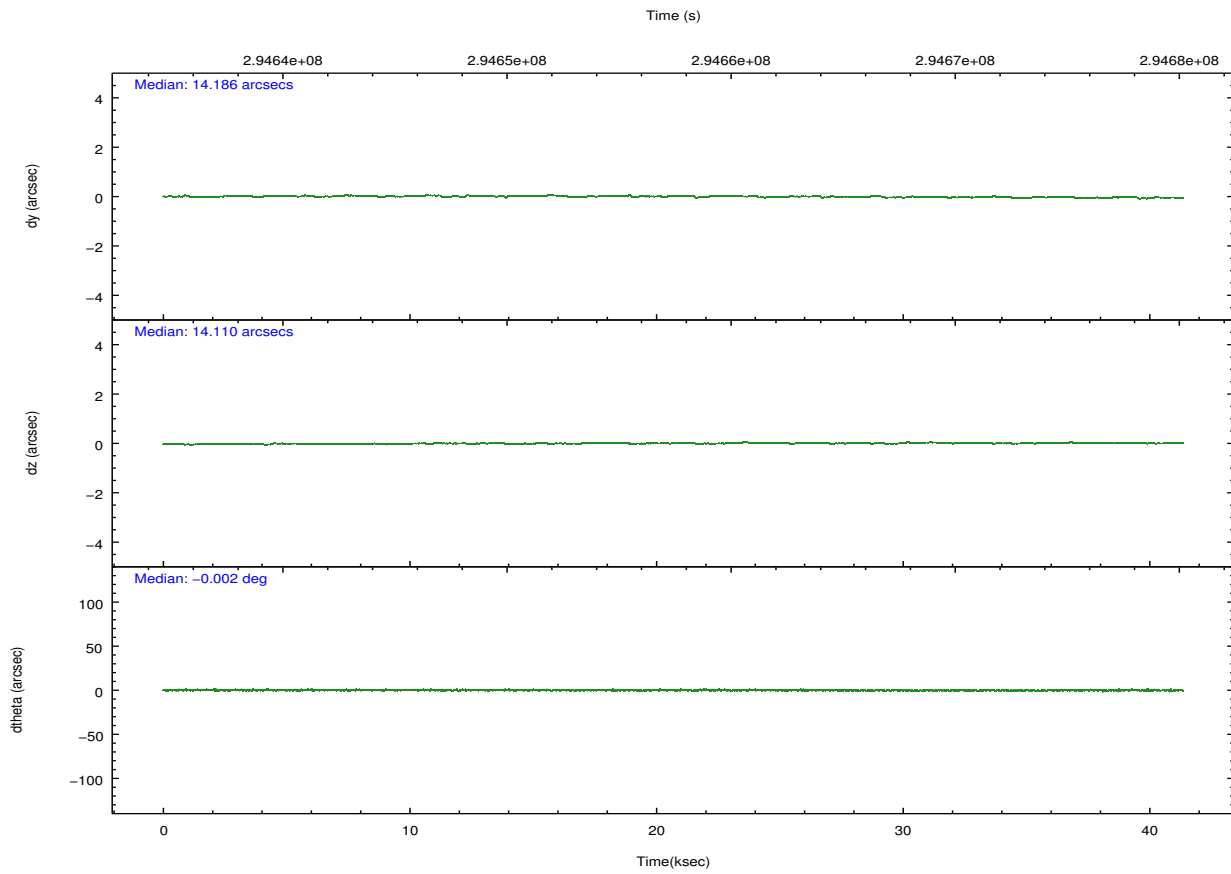
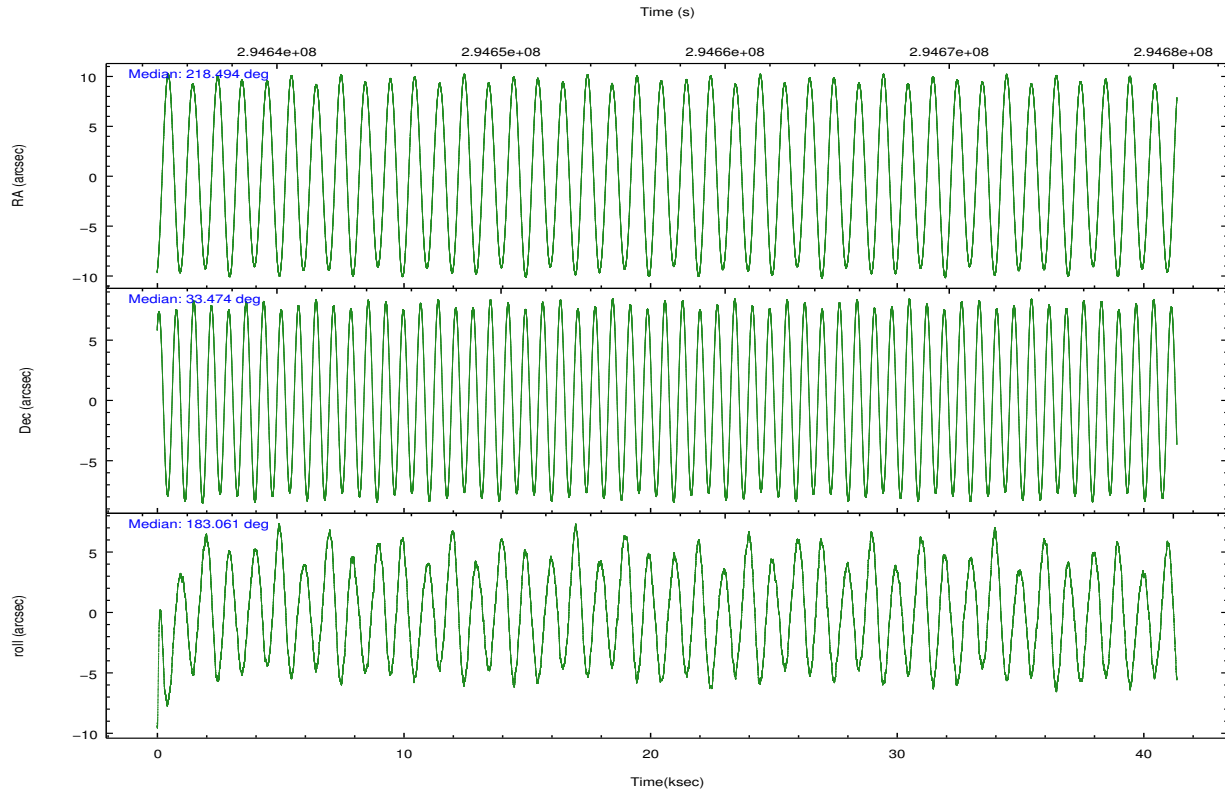
	ccd 0	ccd 1	ccd 2	ccd 3	ccd 6
grade 0 events	11238	11189	11209	10924	10921
	3%	3%	3%	3%	3%
grade 1 events	164	163	193	180	150
	0%	0%	0%	0%	0%
grade 2 events	7198	6957	6972	6239	6693
	2%	2%	2%	2%	2%
grade 3 events	3361	3738	3238	3331	3459
	1%	1%	0%	1%	1%
grade 4 events	3174	3626	3231	3130	3347
	1%	1%	0%	1%	1%
grade 5 events	8882	9992	8291	10519	10252
	3%	3%	2%	3%	3%
grade 6 events	5490	6523	5082	5566	6218
	1%	2%	1%	1%	2%
grade 7 events	255941	245310	297754	268744	269830
	86%	85%	88%	87%	86%

2.2 Compared Parameters

Parameter	Planned	Actual	Parameter	Planned	Actual
Instrument	ACIS	ACIS	Obspar format version number	7	7
Detector	ACIS-01236	ACIS-01236	Obspar file type	PREDICTED	ACTUAL
Grating	NONE	NONE	Obspar update status	NONE	UPDATED
Data mode	VFAINT	VFAINT	Number of optional ACIS chips dropped	0	0
Observation mode	POINTING	POINTING	On-chip summing requested	N	N
[deg] Pointing RA	218.521656	218.4940922940123	Subarray requested	NONE	NONE
[deg] Pointing Dec	33.488550	33.47347527107593	Alternating exposures requested	N	N
[deg] Pointing Roll	182.835456	183.0593533571705	[s] Primary exposure time	0.000000	3.1
[mm] SIM focus pos	-0.782348	-0.7809083437167272			
[mm] SIM defocus	0	0.001439871863259334			
[mm] SIM translation stage pos	-233.592463	-233.5874344608287			
[mm] SIM translation stage offset	0	-0.005018542100998502			
[s] Observation start time (MET)	294636911.184000	294636498.23591			
Observation start date	2007-05-04T03:34:06	2007-05-04T03:28:18			
[s] Observation end time (MET)	294678079.184000	294679514.41296			
Observation end date	2007-05-04T15:00:14	2007-05-04T15:25:14			
Read mode	TIMED	TIMED			

2.3 Aspect



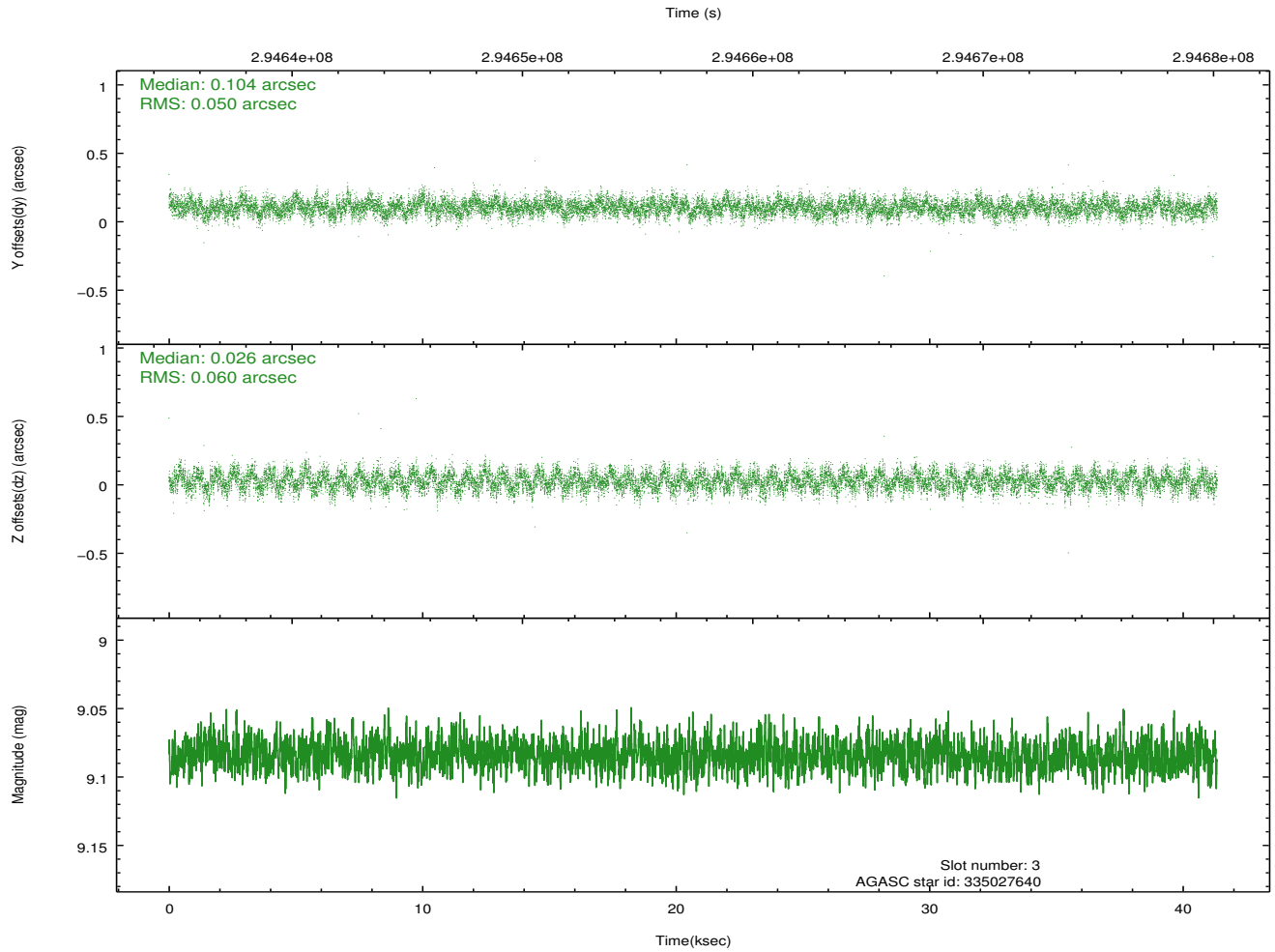
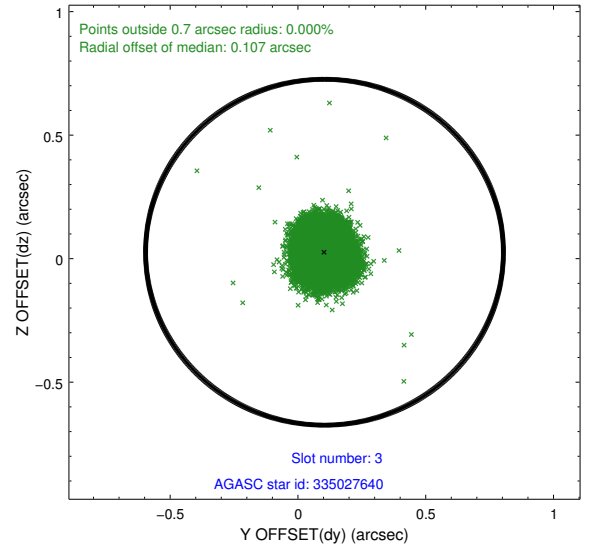
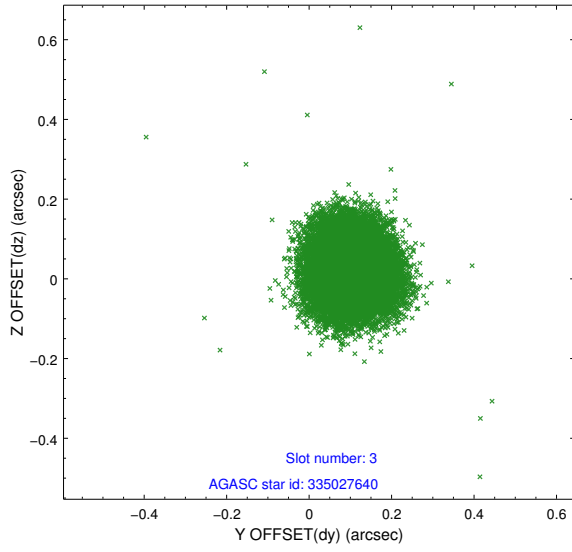


Slot Statistics

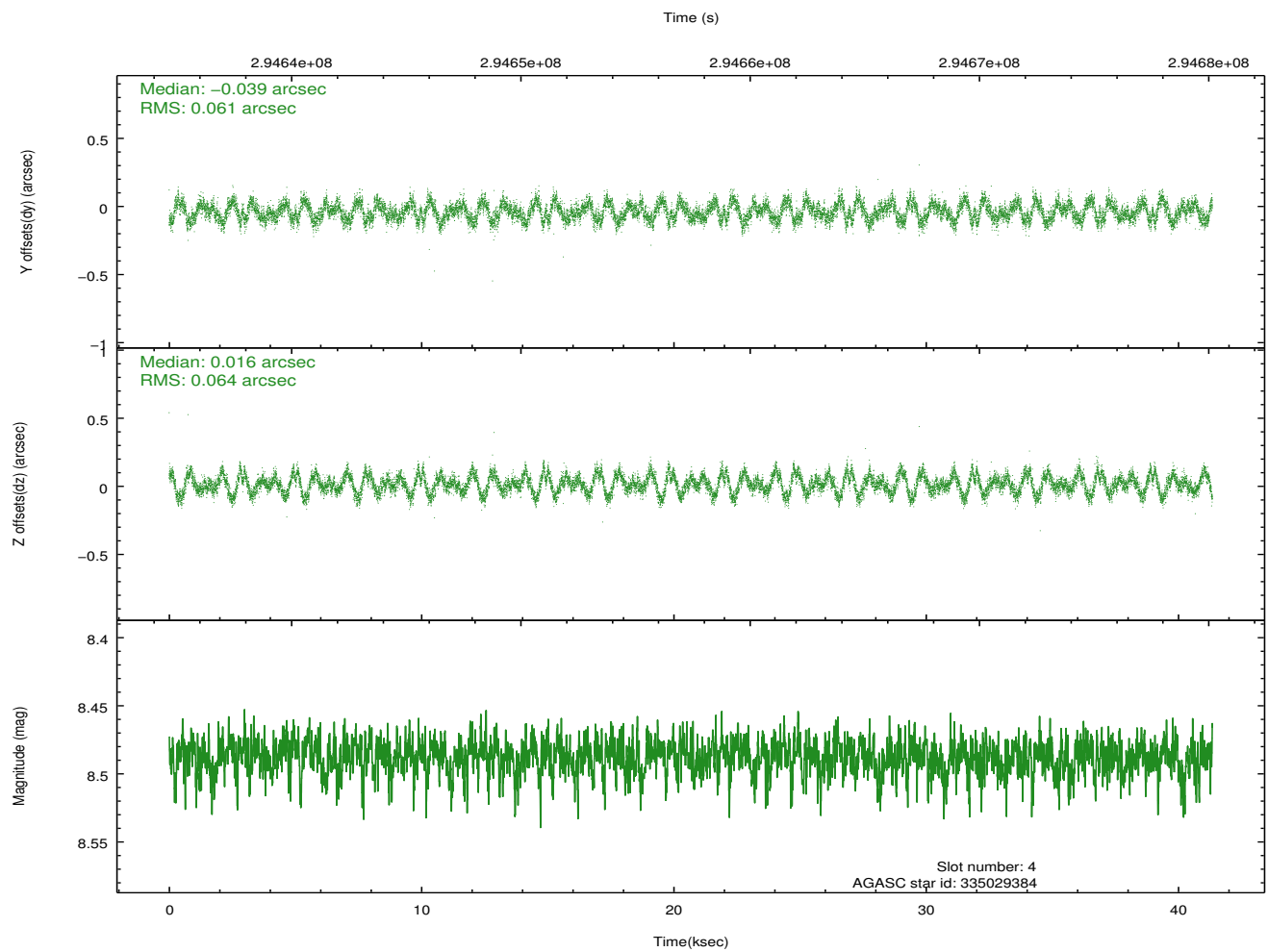
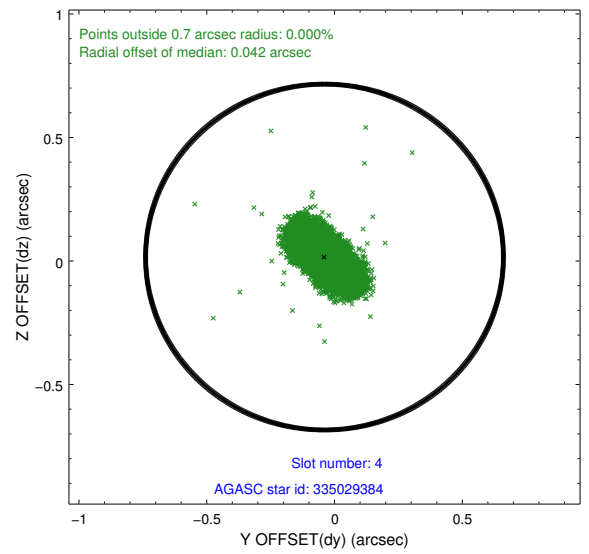
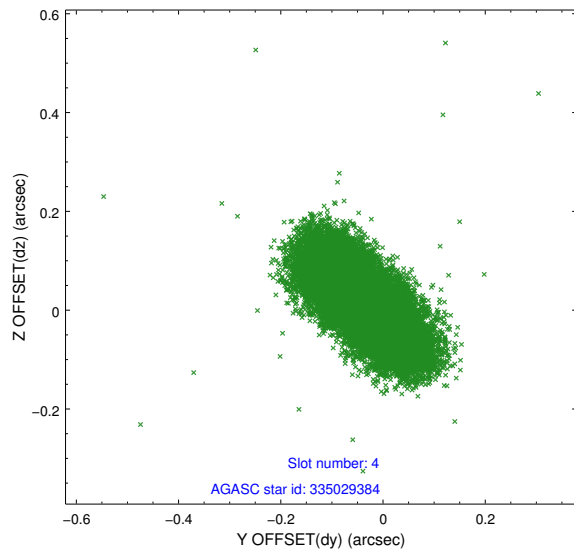
slot	status	id	mag	n_pts	med_dy	med_dz	dr1	dr2	ra	dec	mean_y	mean_z
0	FID	ACIS-I-1	7.23	10082	0.036	0.009	0.006	0.011	0.000000	0.000000	925.34	-837.67
1	FID	ACIS-I-5	7.22	10084	-0.230	0.039	0.006	0.010	0.000000	0.000000	-1823.04	1059.82
2	FID	ACIS-I-6	7.24	10083	0.103	0.023	0.007	0.011	0.000000	0.000000	390.92	1704.34
3	GUIDE	335027640	9.08	20154	0.104	0.026	0.084	0.132	218.092211	33.193770	1344.79	993.46
4	GUIDE	335029384	8.49	20156	-0.039	0.016	0.095	0.154	217.848061	33.088477	2100.19	1331.95
5	GUIDE	335152784	7.23	20167	-0.084	-0.011	0.057	0.091	219.280617	33.678221	-2305.10	-577.28
6	GUIDE	335154960	9.54	20144	0.034	-0.094	0.100	0.170	219.209961	33.303073	-2036.81	763.36
7	GUIDE	335157088	9.08	20145	-0.021	0.053	0.121	0.180	219.274029	33.726909	-2292.89	-753.29

2.4 Star Slots

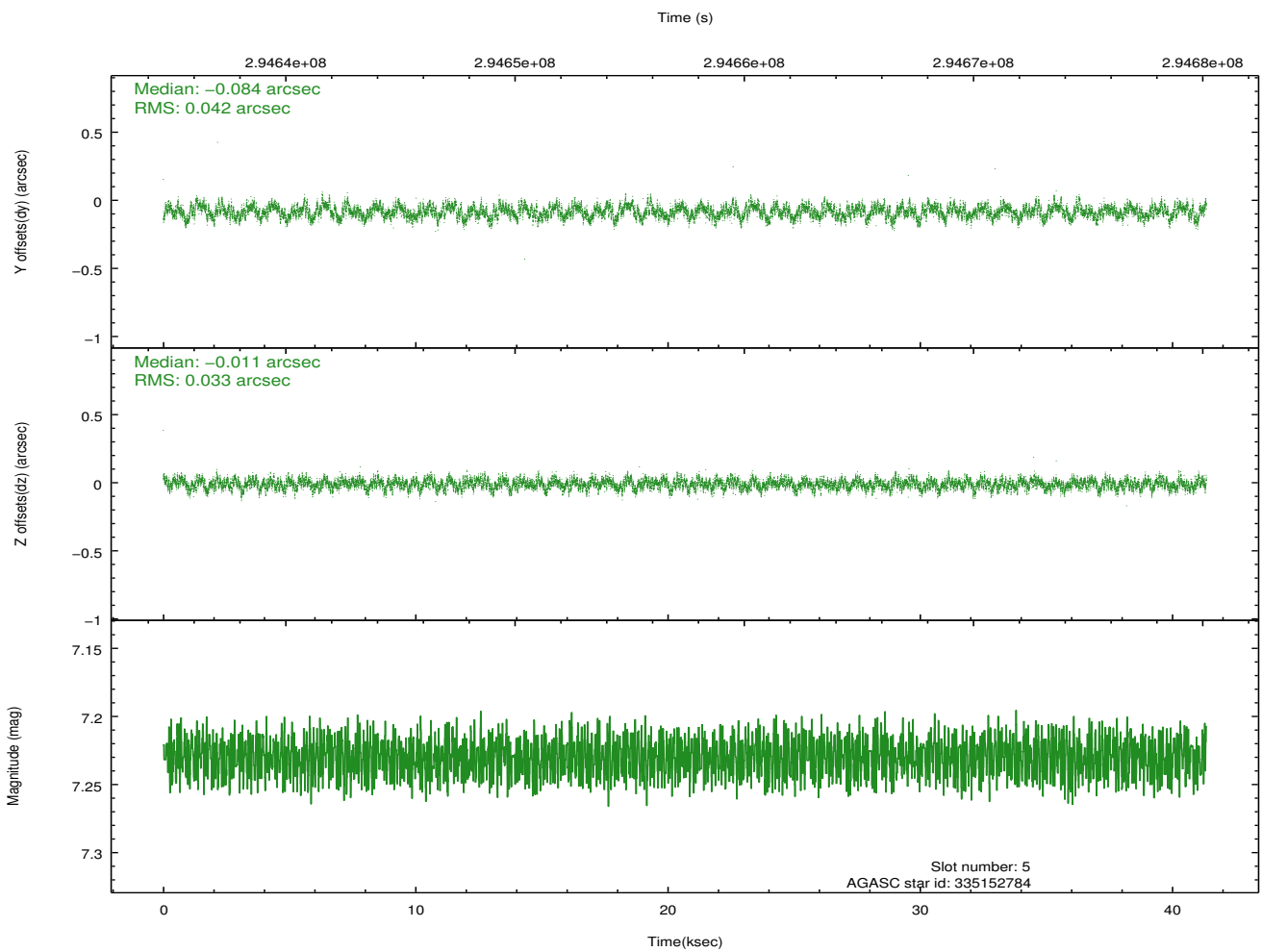
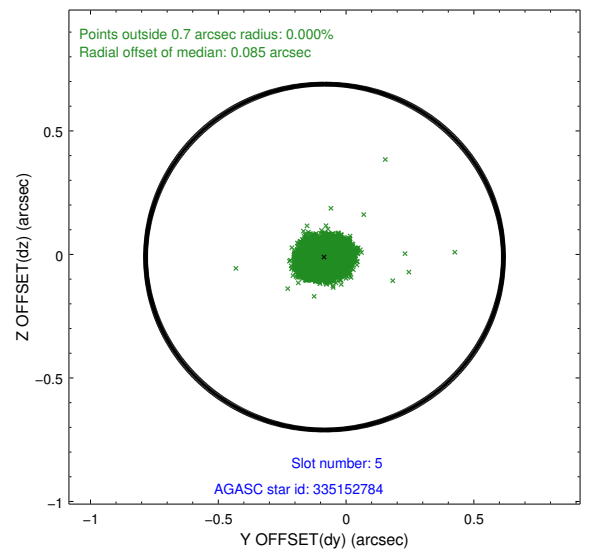
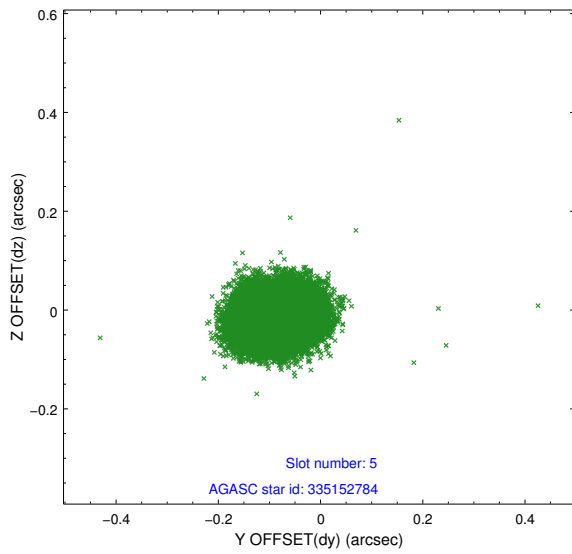
2.4.1 Slot 3



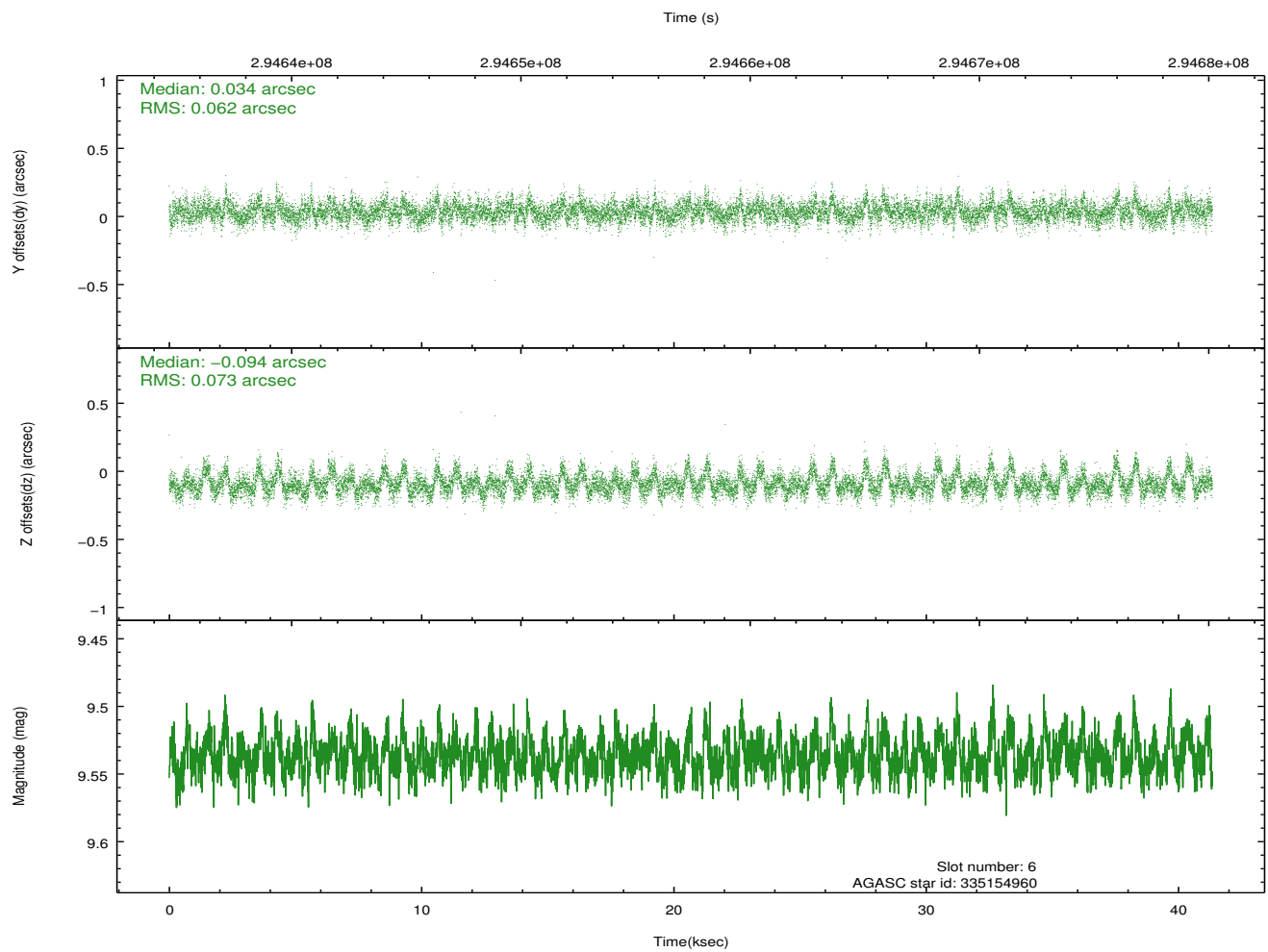
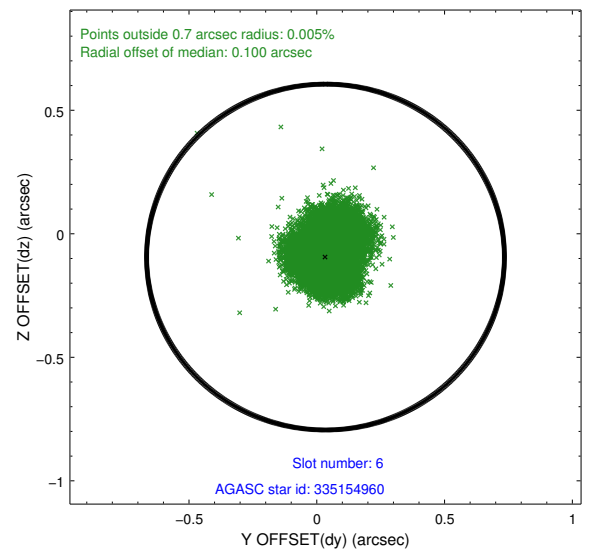
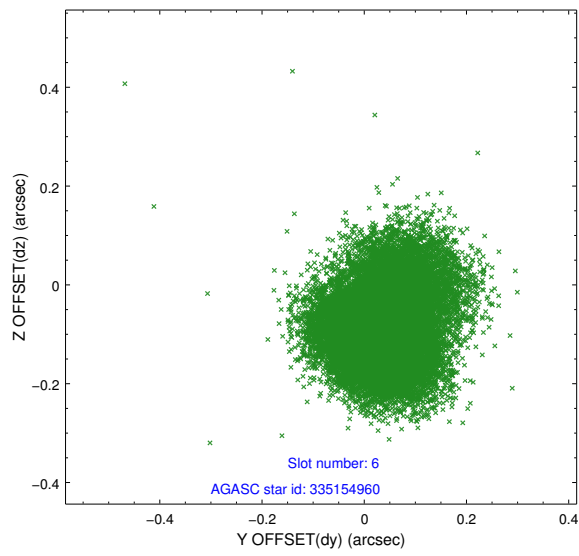
2.4.2 Slot 4



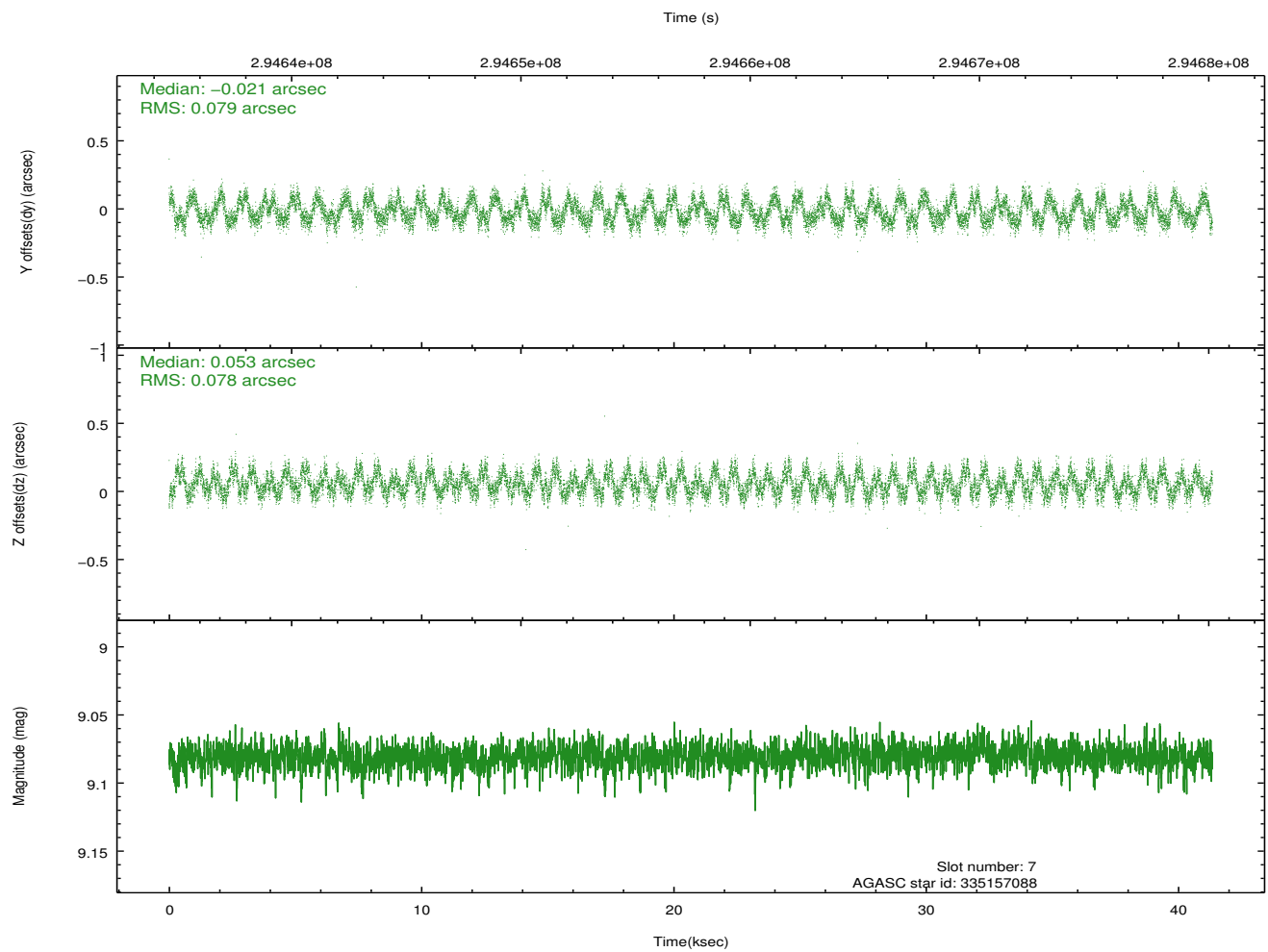
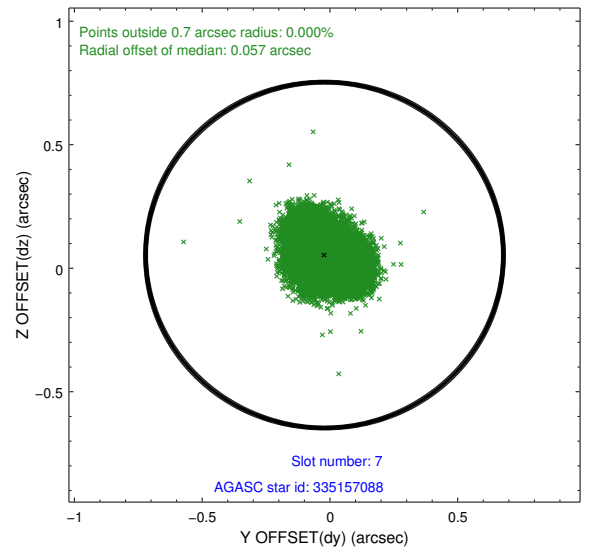
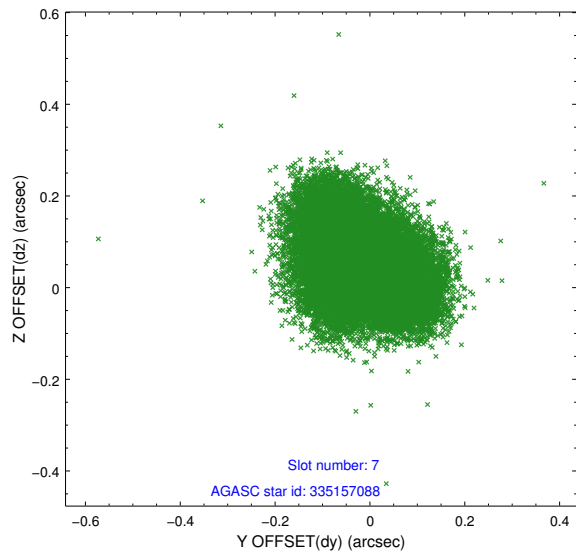
2.4.3 Slot 5



2.4.4 Slot 6

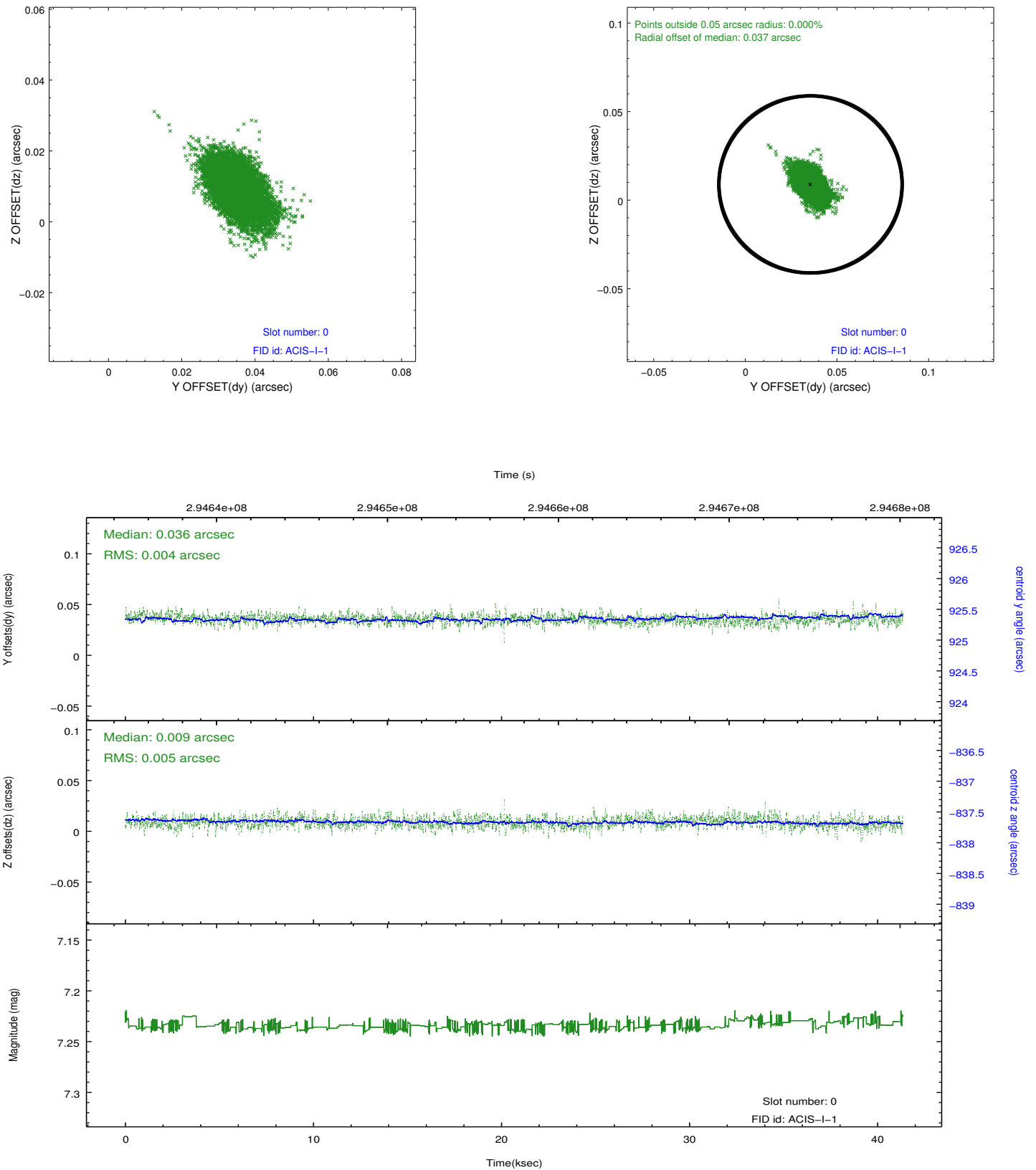


2.4.5 Slot 7

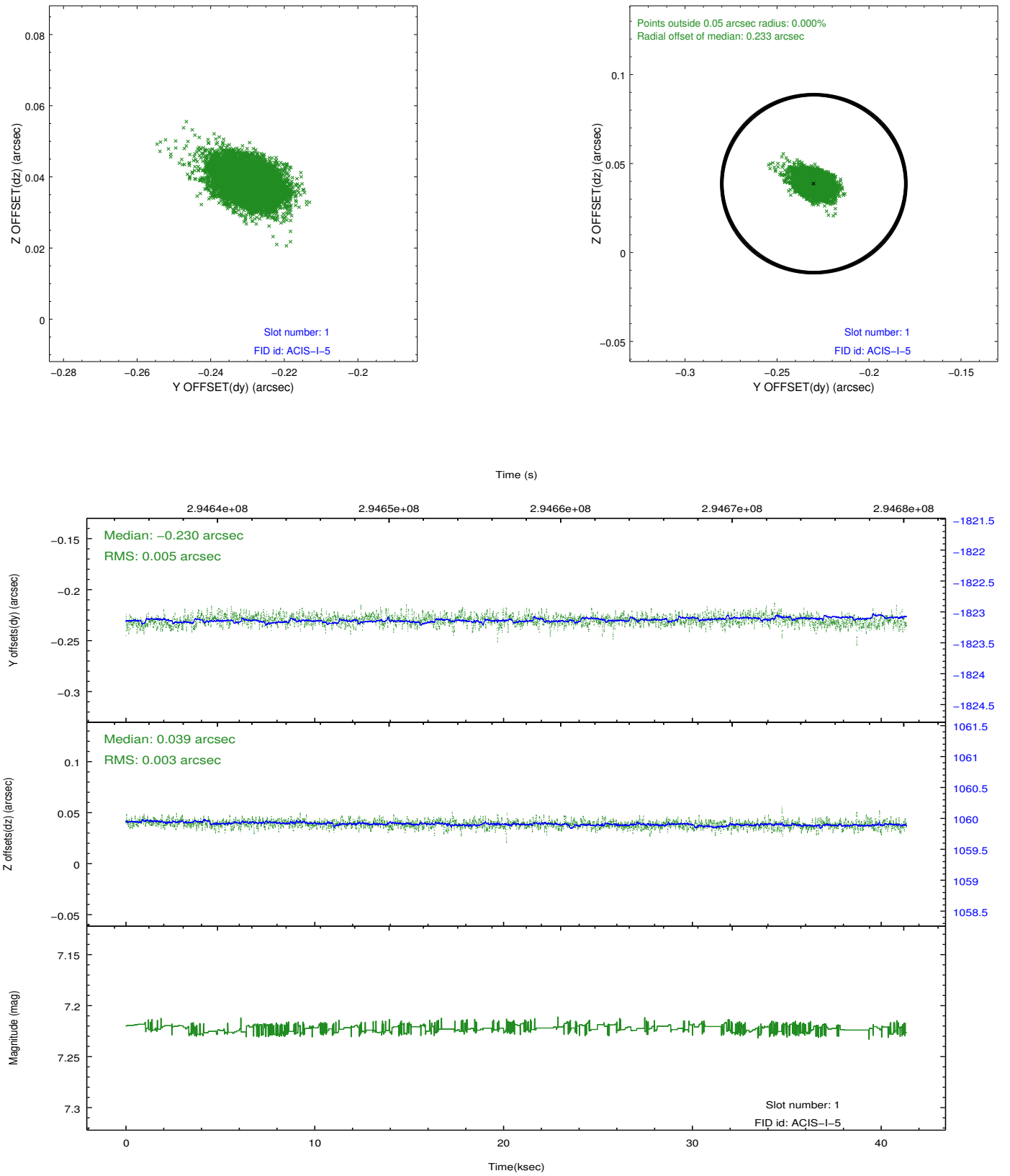


2.5 FID Slots

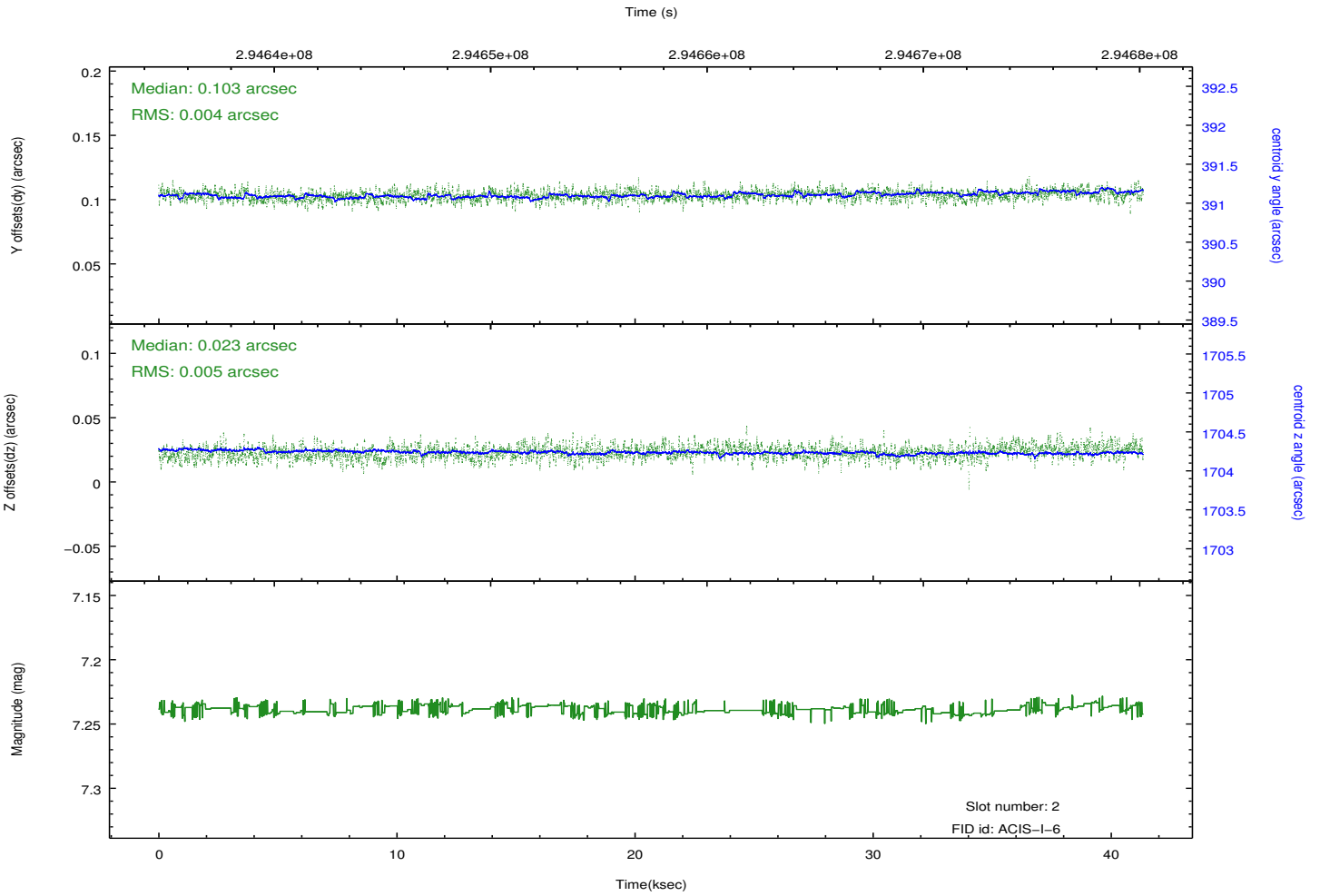
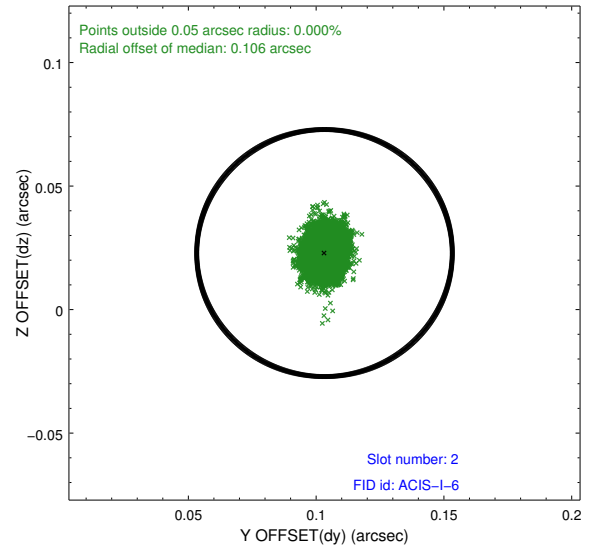
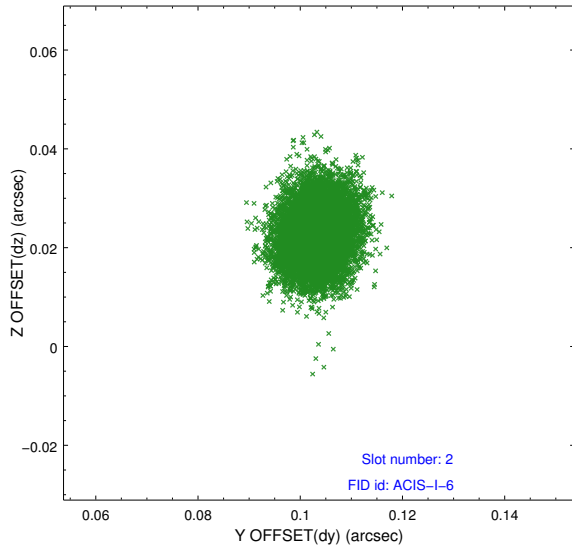
2.5.1 Slot 0



2.5.2 Slot 1



2.5.3 Slot 2



A Summary

A.1 Status

V&V Scientist	Jen Lauer
V&V Date (YYYY-MM-DD)	2012.04.25
V&V Edition	1
V&V Disposition and Status	OK
V&V Charge Time	40.9259954

A.2 Comments