

V&V Reference Report

L2 ASCDS Version : 8.4.3.1

Observation 7996 - L2 Version 3
Chandra X-Ray Center

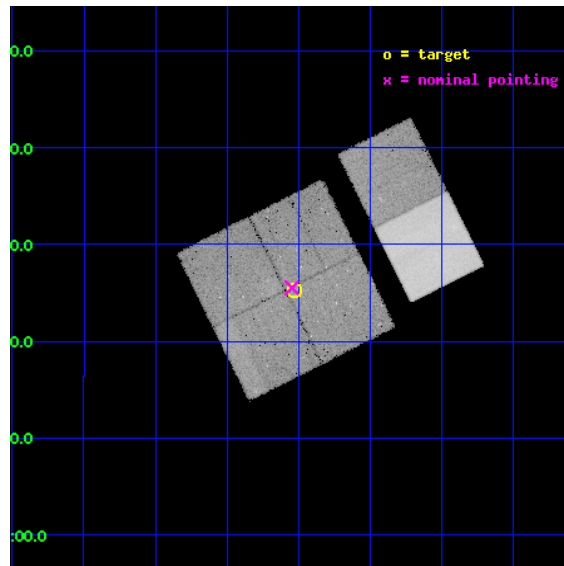
L2 Processing Date : Apr 16 2012

Contents

1	Front	2
2	OBI	3
2.1	OBI	3
2.1.1	Images	3
2.1.2	Bias	3
2.1.3	Parameters	4
2.1.4	Events	4
2.2	Compared Parameters	5
2.3	Aspect	6
2.4	Star Slots	9
2.4.1	Slot 3	9
2.4.2	Slot 4	10
2.4.3	Slot 5	11
2.4.4	Slot 6	12
2.4.5	Slot 7	13
2.5	FID Slots	14
2.5.1	Slot 0	14
2.5.2	Slot 1	15
2.5.3	Slot 2	16
A	Summary	17
A.1	Status	17
A.2	Comments	17

1 Front

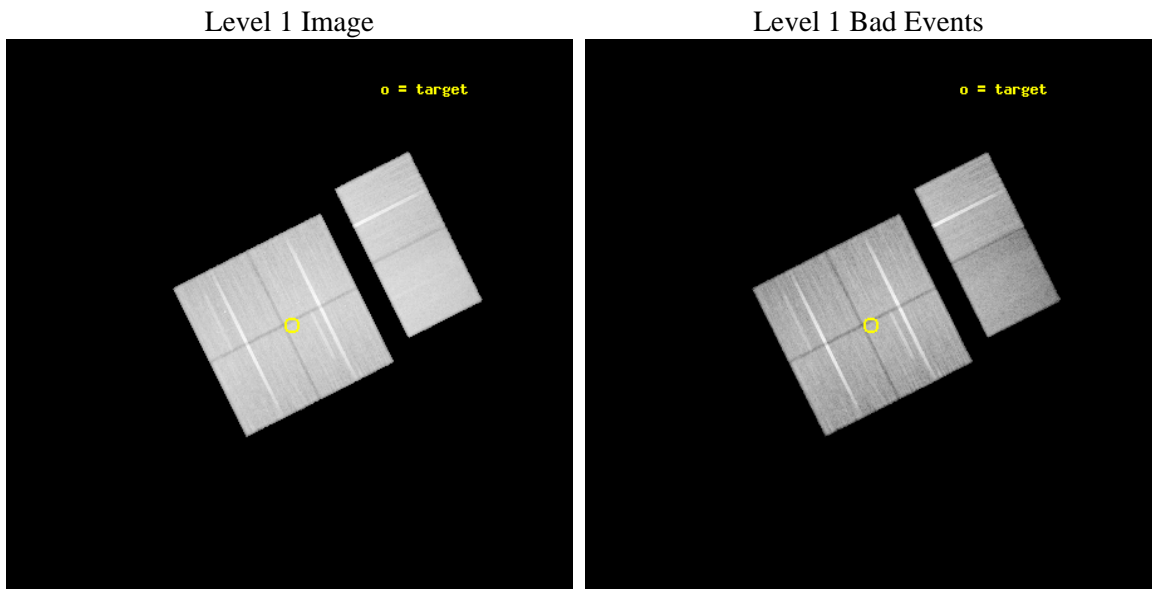
seq_num	900540	Sequence number
obs_id	7996	Observation id
title	THE CHANDRA-COSMOS SURVEY	Proposal title
observer	Dr. Martin Elvis	Principal investigator
object	C-COSMOS1-2	Source name
dtcycle	0	
cycle	P	events from which exps? Prim/Second/Both
ra_targ	150.383275	Observer's specified target RA [deg]
dec_targ	2.422356	Observer's specified target Dec [deg]
ra_nom	150.38680841925	Nominal RA [deg]
dec_nom	2.42548333228	Nominal Dec [deg]
roll_nom	63.36866279058	Nominal Roll [deg]
revision	3	Processing version of data
ontime	46908.298778117	Sum of GTIs [s]
livetime	46314.317654202	Livetime [s]
ontime0	46914.657608867	Sum of GTIs [s]
ontime1	46904.975697756	Sum of GTIs [s]
ontime2	46911.498678625	Sum of GTIs [s]
ontime3	46908.298778117	Sum of GTIs [s]
ontime6	46911.621898115	Sum of GTIs [s]
ontime7	46914.82176888	Sum of GTIs [s]
l2events	320917	Number of level 2 events



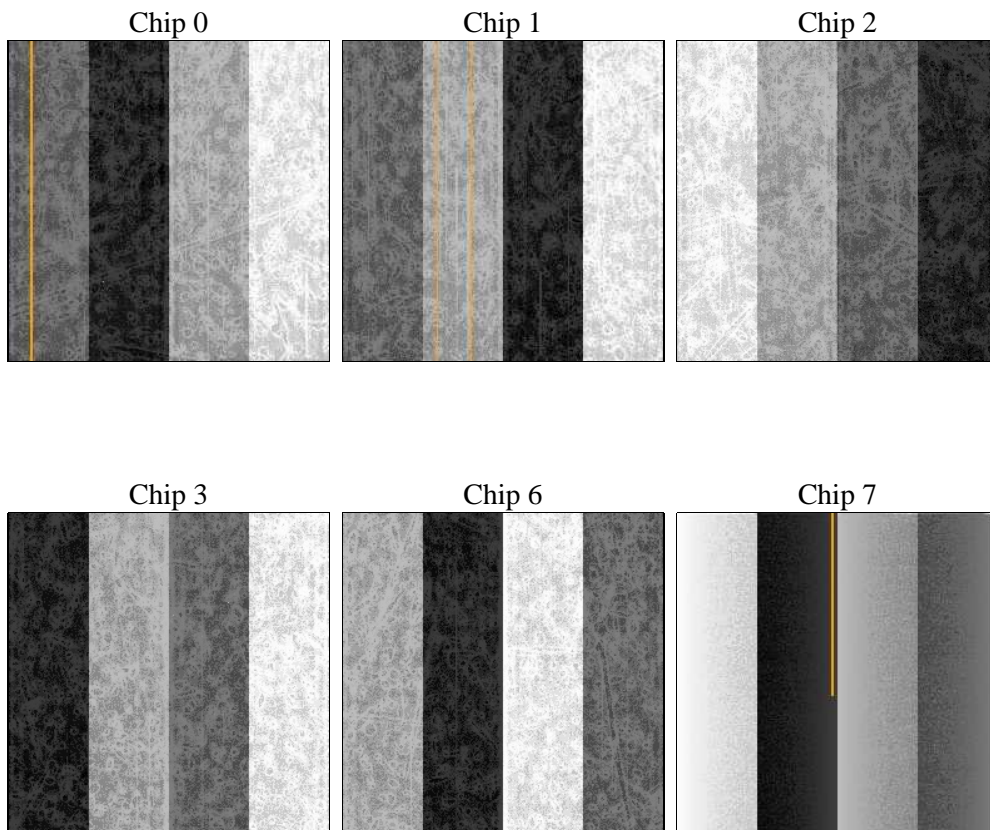
2 OBI

2.1 OBI

2.1.1 Images



2.1.2 Bias



2.1.3 Parameters

obi_num	0	Obi number	sched_exp_time	46886.776000	[s] Scheduled observation exposure time
ascdsver	8.4.3.1	Processing system revision	ontime	46908.298778117	Sum of GTIs [s]
caldbver	4.4.9	 	ontime0	46914.657608867	Sum of GTIs [s]
date	2012-04-16T07:07:17	Date and time of file creation	ontime1	46904.975697756	Sum of GTIs [s]
revision	3	Processing version of data	ontime2	46911.498678625	Sum of GTIs [s]
			ontime3	46908.298778117	Sum of GTIs [s]
			ontime6	46911.621898115	Sum of GTIs [s]
			ontime7	46914.82176888	Sum of GTIs [s]
			l1events	2151425	Number of level 1 events

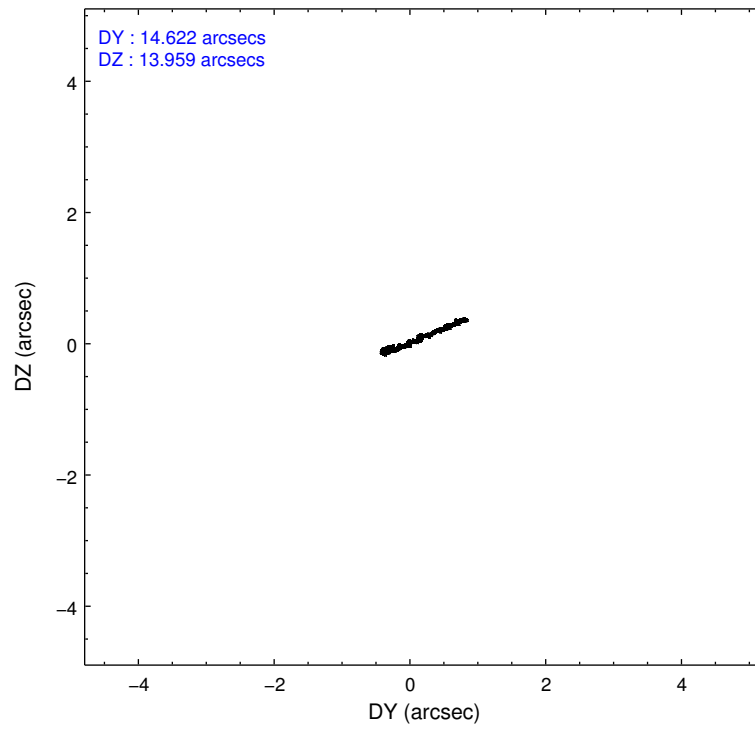
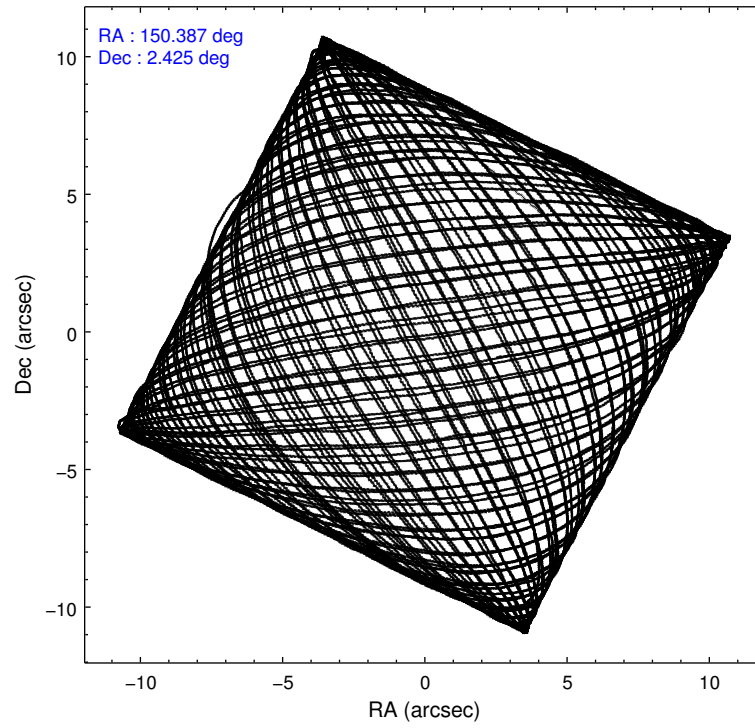
2.1.4 Events

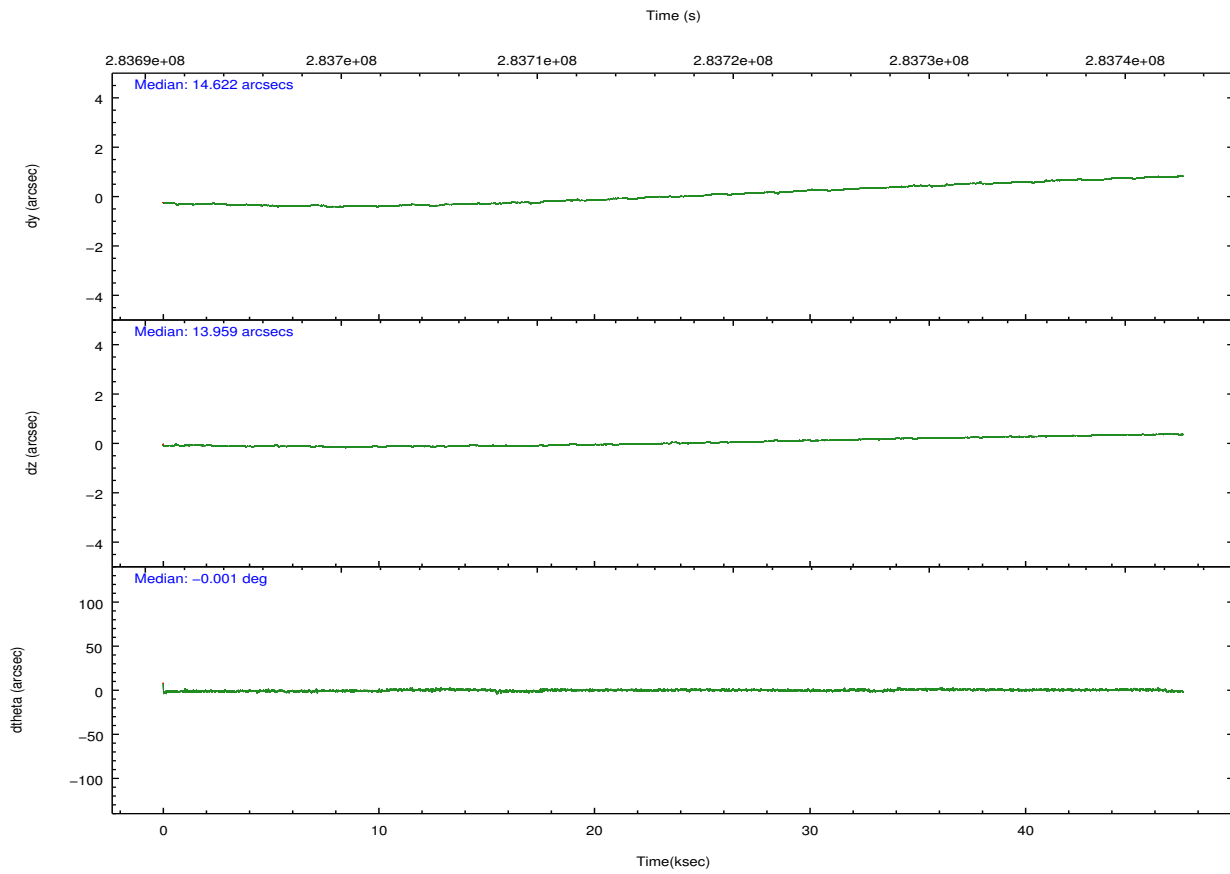
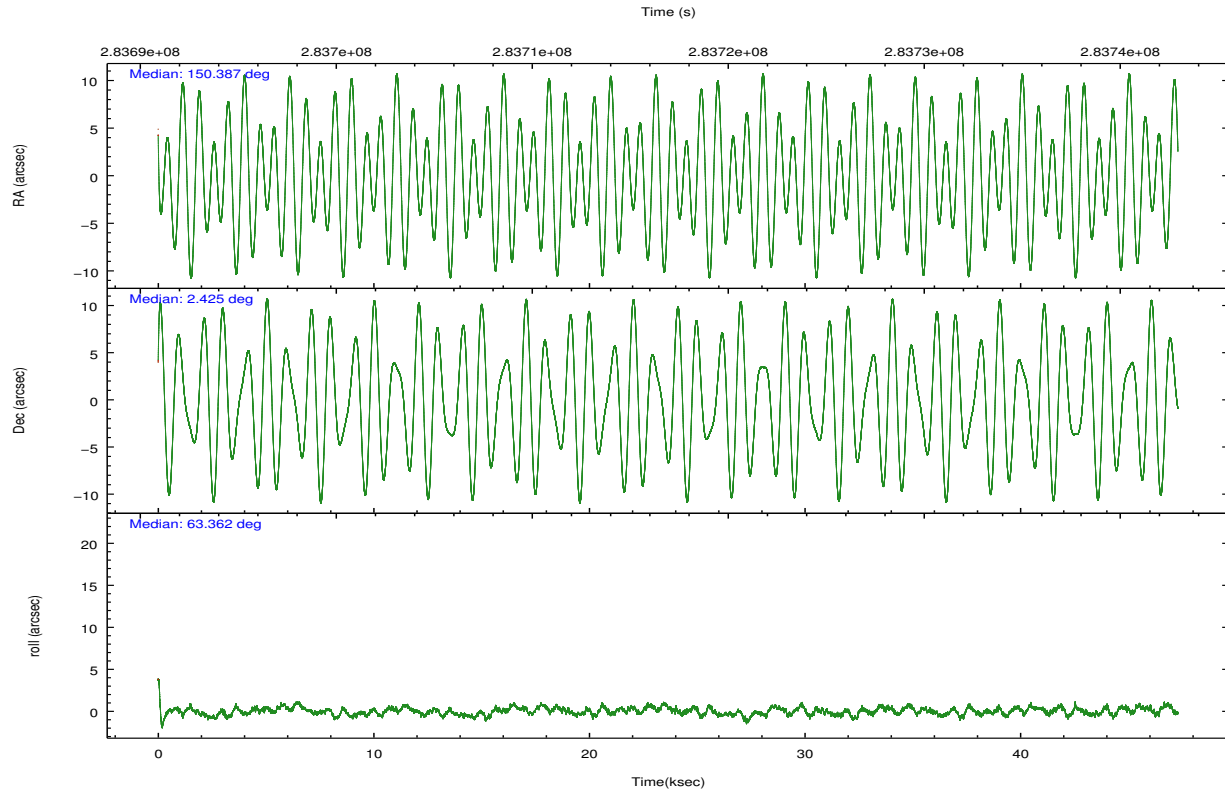
	ccd 0	ccd 1	ccd 2	ccd 3	ccd 6	ccd 7		ccd 0	ccd 1	ccd 2	ccd 3	ccd 6	ccd 7
level 1 events	333680	330038	372217	353142	371942	390406	grade 0 events	12809	13851	12466	11973	12397	16806
rejected events	298767	291350	338133	320013	335717	211700		3%	4%	3%	3%	3%	4%
rejected %	89%	88%	90%	90%	90%	54%	grade 1 events	190	180	184	223	194	467
								0%	0%	0%	0%	0%	0%
							grade 2 events	7983	8662	7804	7193	8051	35550
								2%	2%	2%	2%	2%	9%
							grade 3 events	4054	4271	3685	3730	3911	16458
								1%	1%	0%	1%	1%	4%
							grade 4 events	3627	4046	3740	3763	4003	15860
								1%	1%	1%	1%	1%	4%
							grade 5 events	11972	13216	11221	14160	14484	41010
								3%	4%	3%	4%	3%	10%
							grade 6 events	6451	7864	6394	6471	7868	94057
								1%	2%	1%	1%	2%	24%
							grade 7 events	286594	277948	326723	305629	321034	170198
								85%	84%	87%	86%	86%	43%

2.2 Compared Parameters

Parameter	Planned	Actual	Parameter	Planned	Actual
Instrument	ACIS	ACIS	Obspar format version number	7	7
Detector	ACIS-012367	ACIS-012367	Obspar file type	PREDICTED	ACTUAL
Grating	NONE	NONE	Obspar update status	NONE	UPDATED
Data mode	VFAINT	VFAINT	CCD I0 on	Y	Y
Observation mode	POINTING	POINTING	CCD I1 on	Y	Y
[deg] Pointing RA	150.388525	150.3868084192512	CCD I2 on	Y	Y
[deg] Pointing Dec	2.398032	2.425483332279971	CCD I3 on	Y	Y
[deg] Pointing Roll	63.159905	63.36866279057991	CCD S0 on	N	N
[mm] SIM focus pos	-0.782348	-0.7809083437167272	CCD S1 on	N	N
[mm] SIM defocus	0	0.001439871863259334	CCD S2 on	O1	Y
[mm] SIM translation stage pos	-233.592463	-233.5874344608287	CCD S3 on	O2	Y
[mm] SIM translation stage offset	0	-0.005018542100998502	CCD S4 on	N	N
[s] Observation start time (MET)	283693690.184000	283692569.12819	CCD S5 on	N	N
Observation start date	2006-12-28T11:47:05	2006-12-28T11:29:29	Number of optional ACIS chips dropped	0	0
[s] Observation end time (MET)	283740576.184000	283740811.78048	On-chip summing requested	N	N
Observation end date	2006-12-29T00:48:31	2006-12-29T00:53:31	Subarray requested	NONE	NONE
Read mode	TIMED	TIMED	Alternating exposures requested	N	N
			[s] Primary exposure time	0.000000	3.2

2.3 Aspect





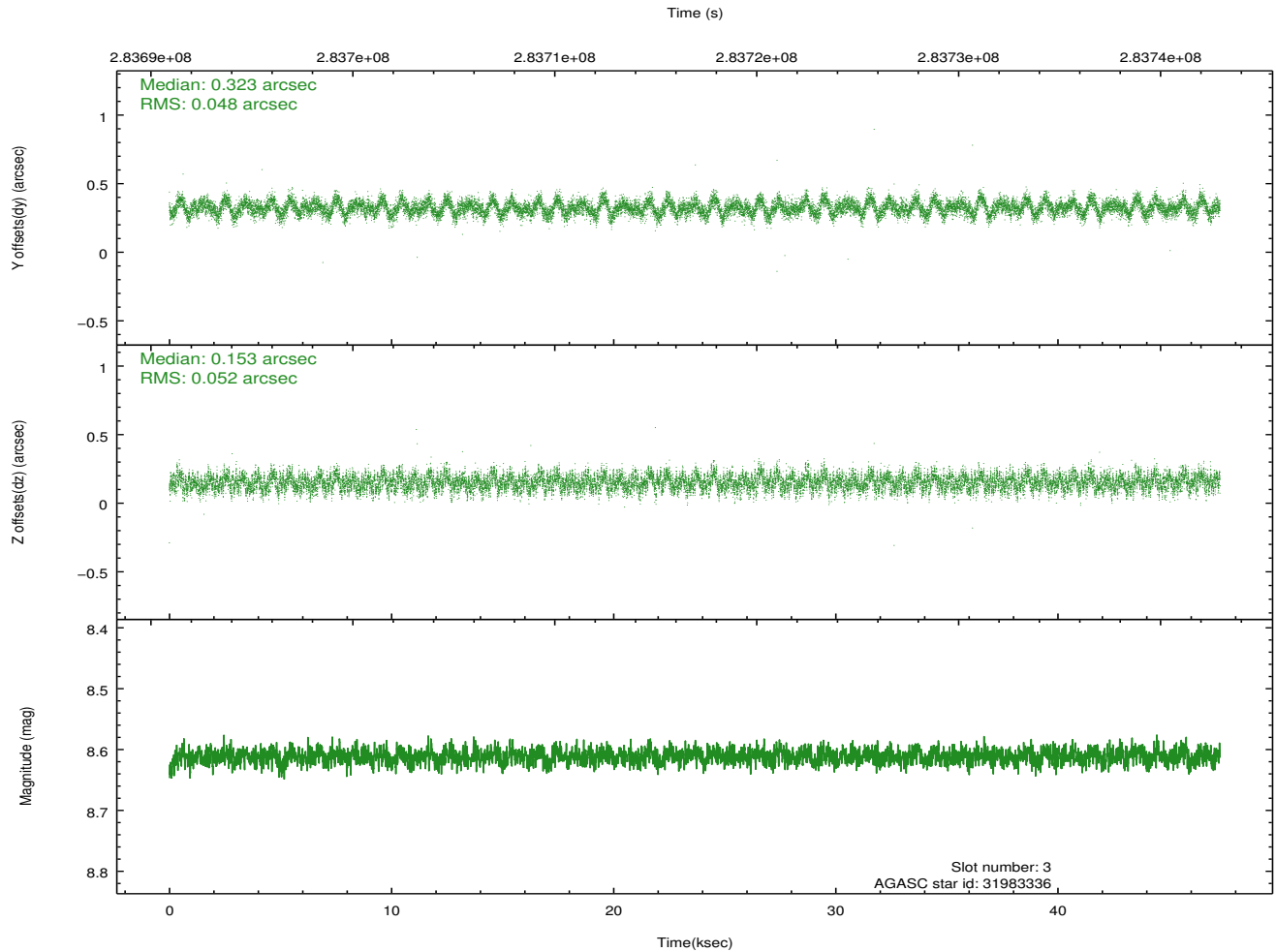
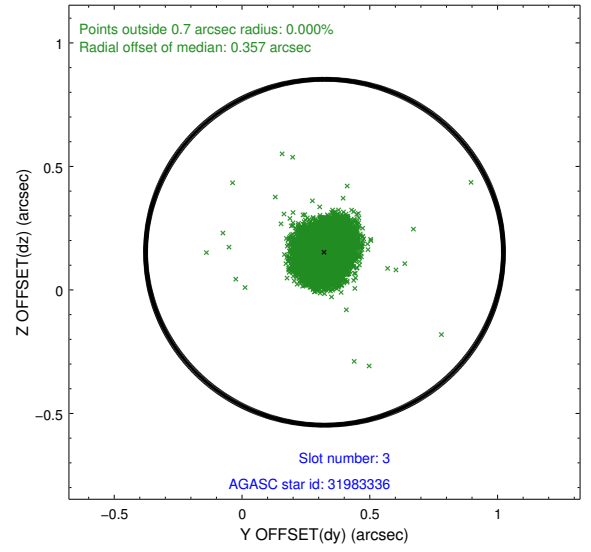
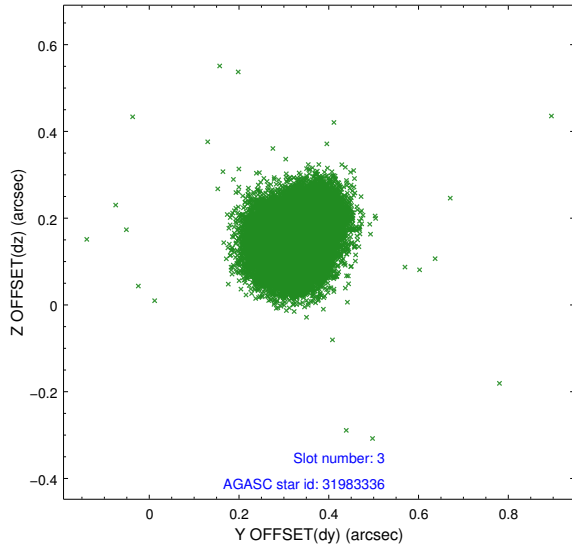
Slot Statistics

slot	status	id	mag	n_pts	med_dy	med_dz	dr1	dr2	ra	dec	mean_y	mean_z
0	FID	ACIS-I-4	7.17	11537	0.193	0.026	0.023	0.033	0.000000	0.000000	2144.93	1062.30
1	FID	ACIS-I-5	7.23	11537	-0.318	0.014	0.020	0.031	0.000000	0.000000	-1823.54	1060.11
2	FID	ACIS-I-6	7.25	11538	0.024	0.027	0.012	0.019	0.000000	0.000000	390.37	1704.42
3	GUIDE	31983336	8.61	23065	0.323	0.153	0.076	0.120	150.429924	2.291234	-275.07	-306.07
4	GUIDE	31985760	8.46	23063	-0.041	0.127	0.067	0.108	150.924581	2.094394	-103.94	-2213.70
5	GUIDE	31986152	9.01	23057	-0.041	-0.202	0.105	0.171	150.840314	2.057585	-359.13	-2003.35
6	GUIDE	32374896	9.22	23049	-0.073	0.088	0.104	0.160	150.682269	2.512794	846.00	-755.80
7	GUIDE	32387968	9.20	23051	-0.164	-0.166	0.097	0.154	150.106347	3.119099	1858.46	2077.48

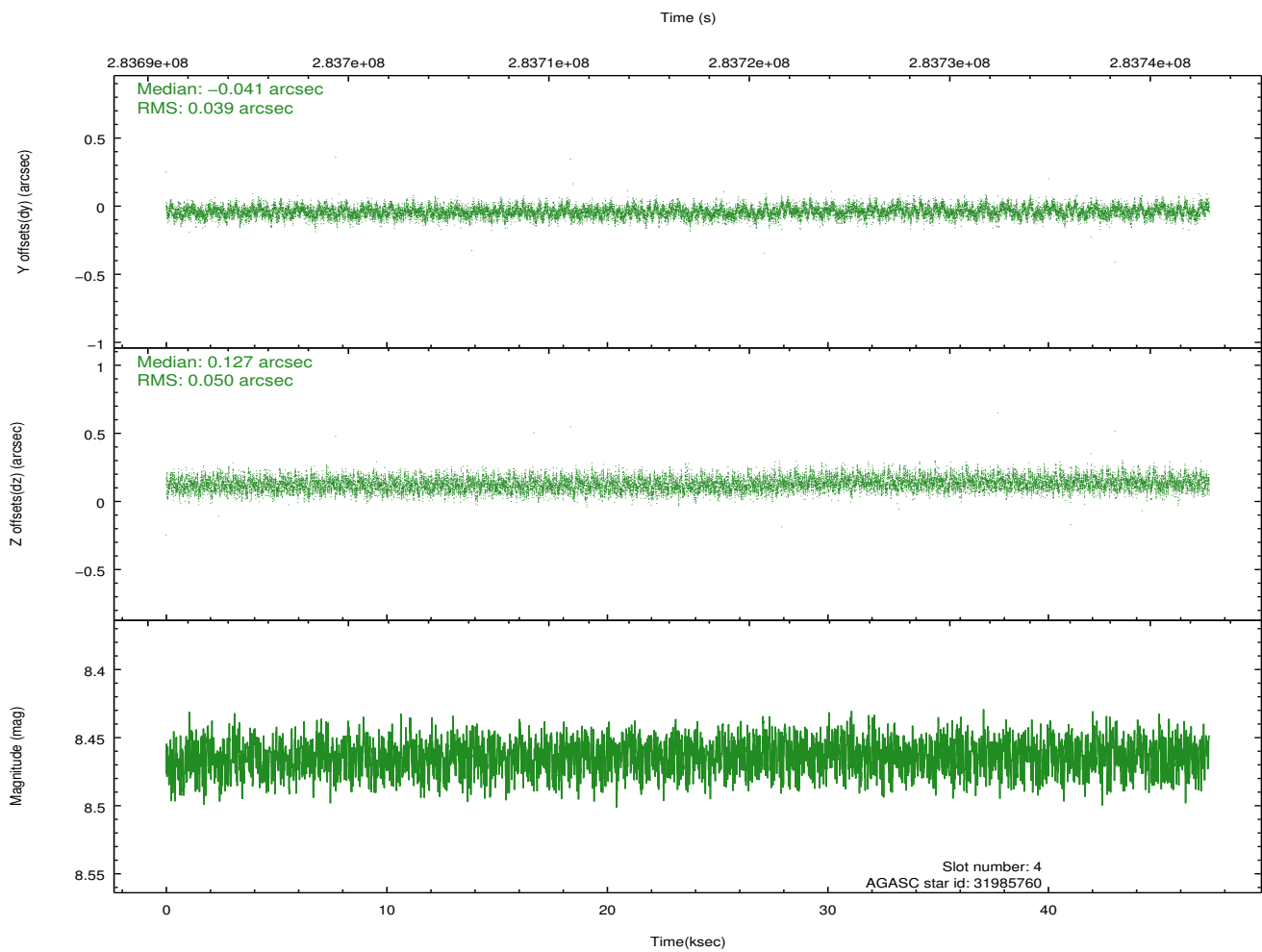
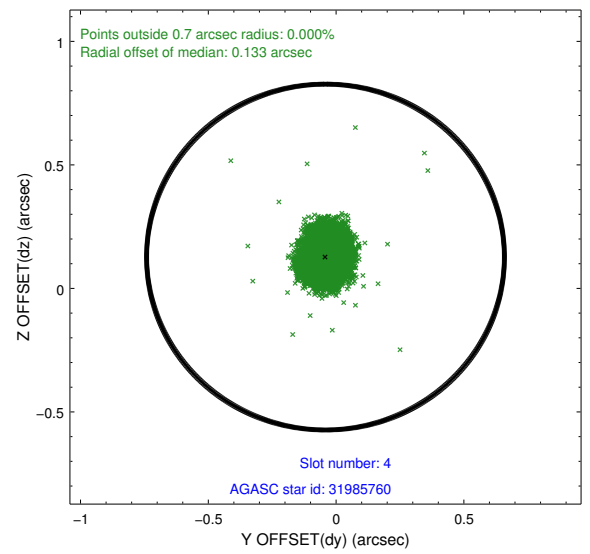
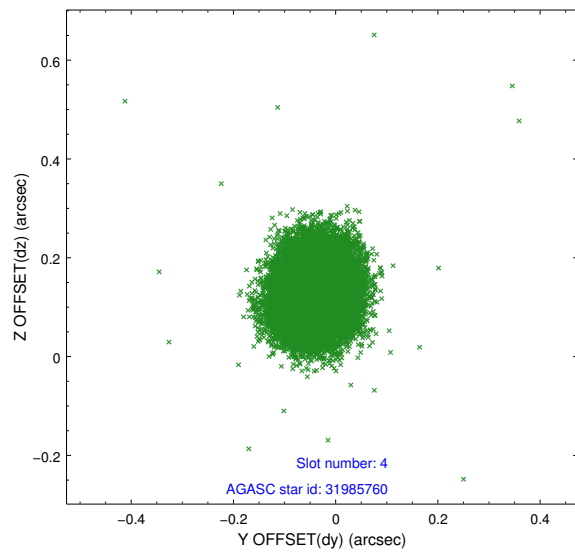
∞

2.4 Star Slots

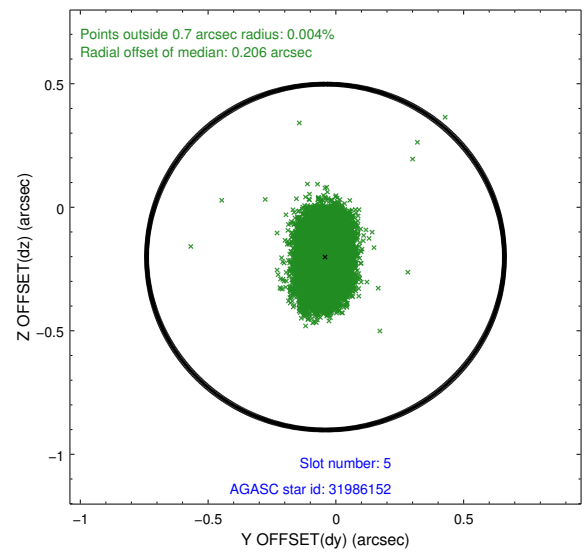
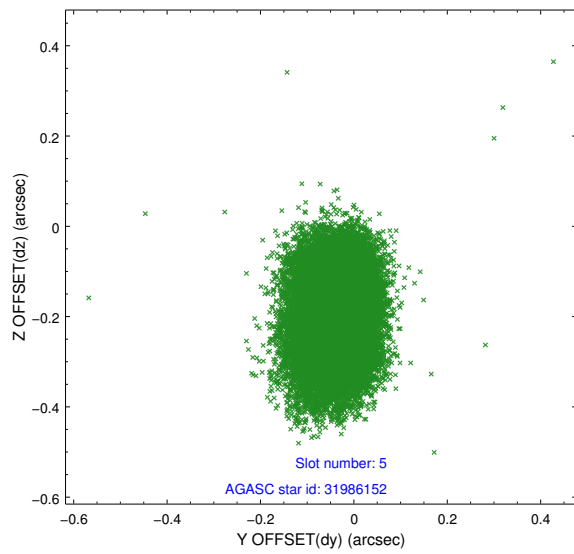
2.4.1 Slot 3



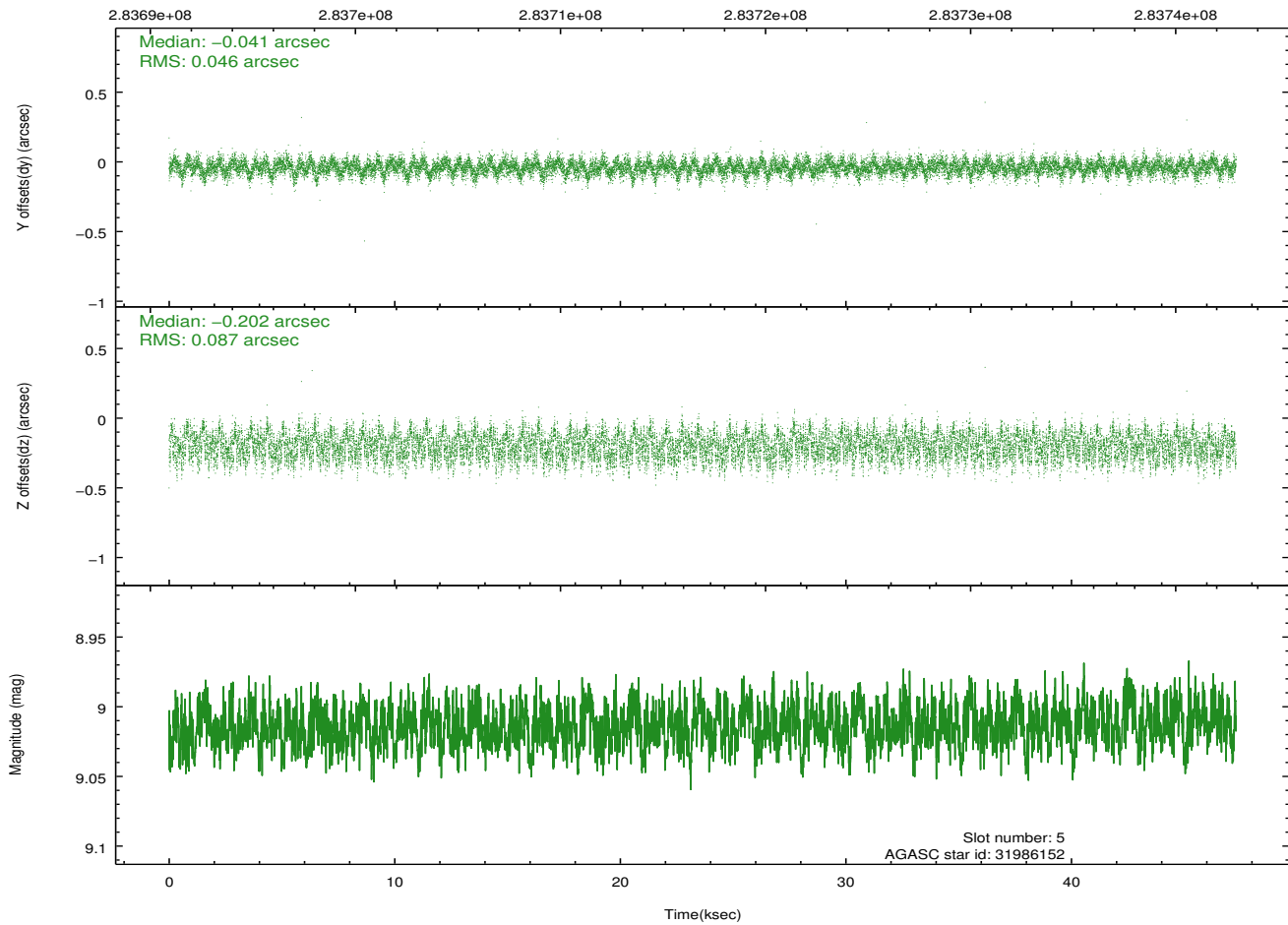
2.4.2 Slot 4



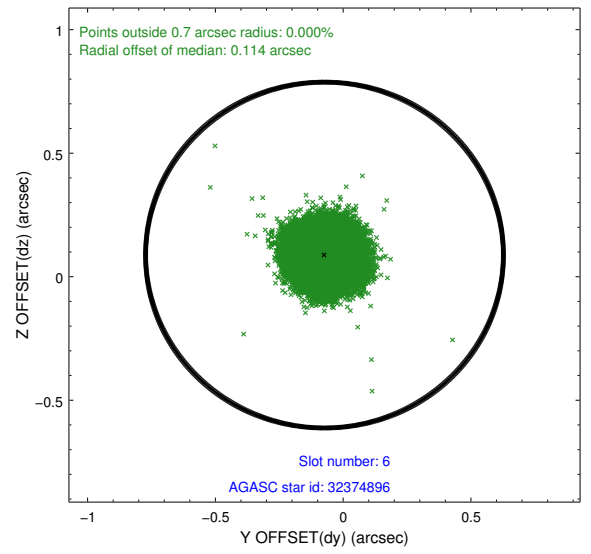
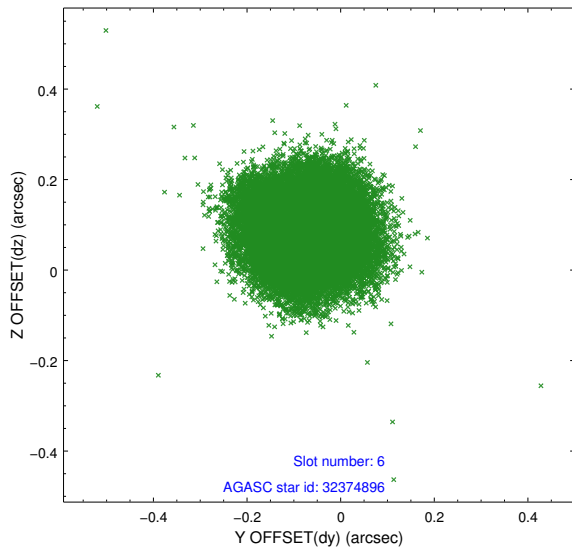
2.4.3 Slot 5



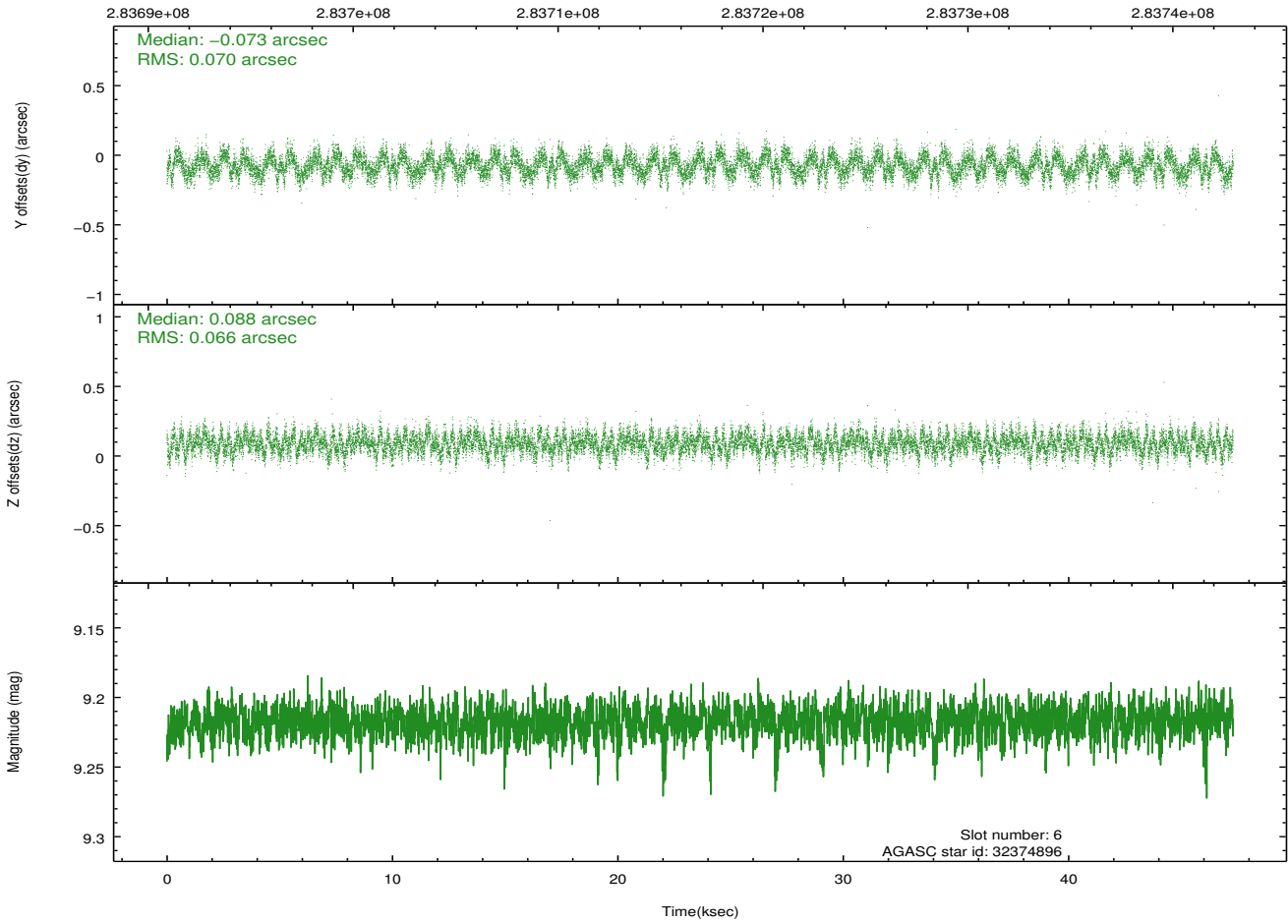
Time (s)



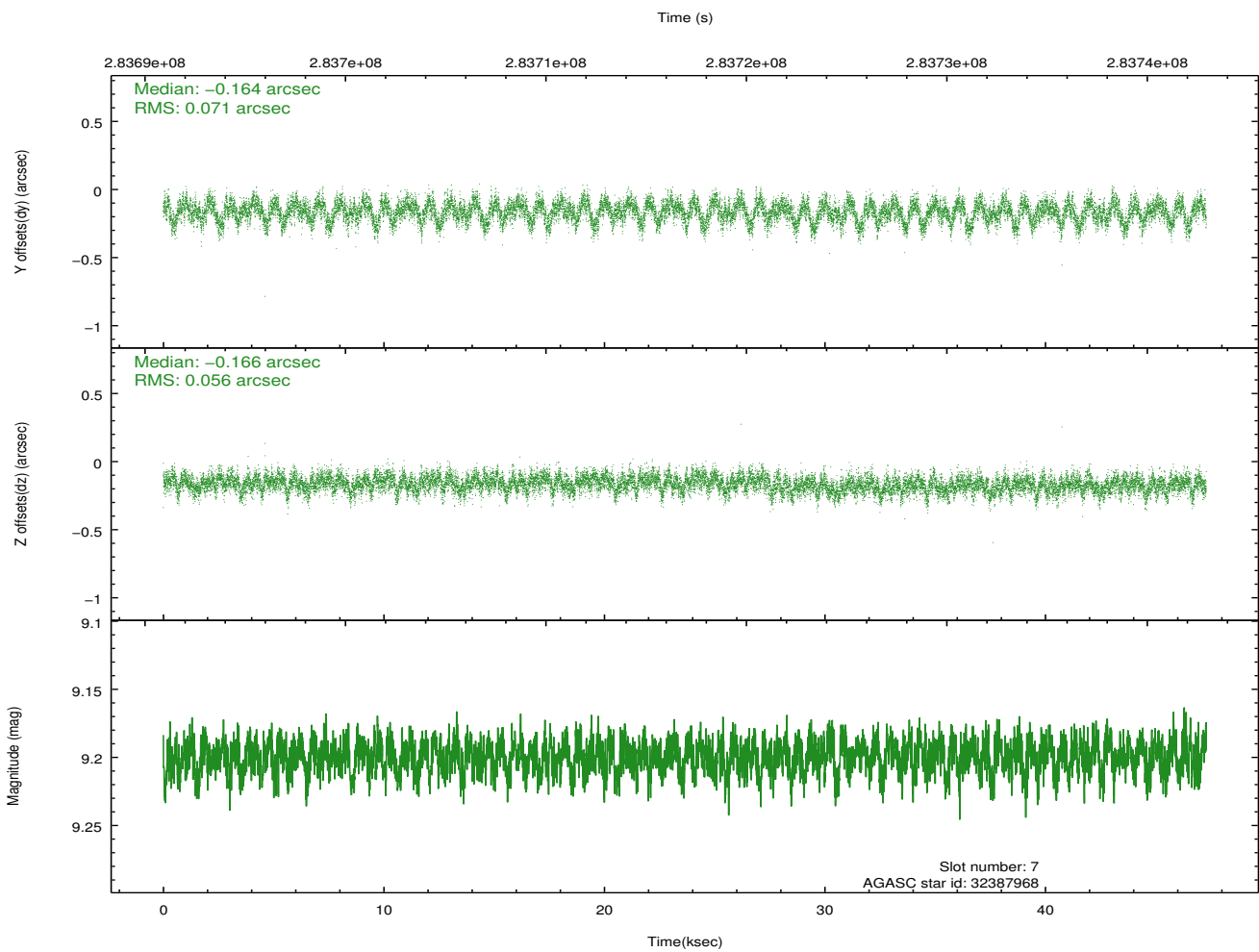
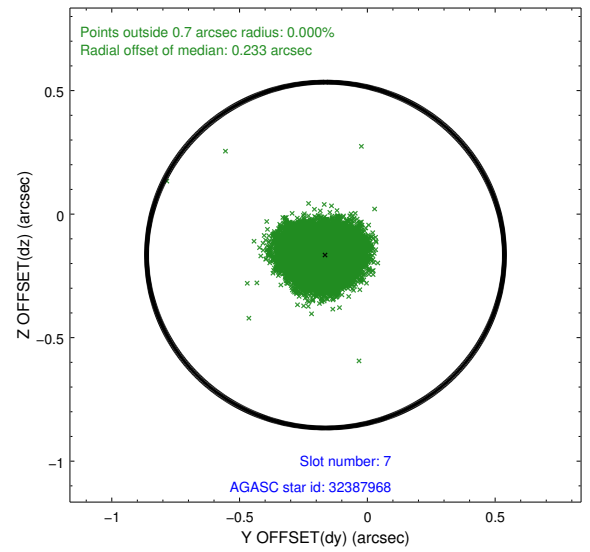
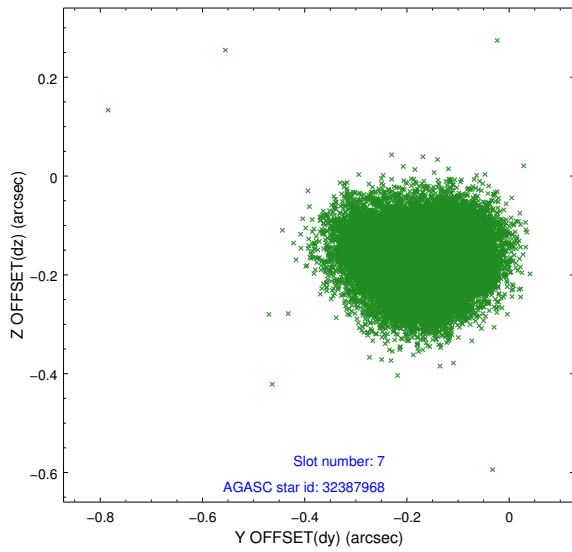
2.4.4 Slot 6



Time (s)

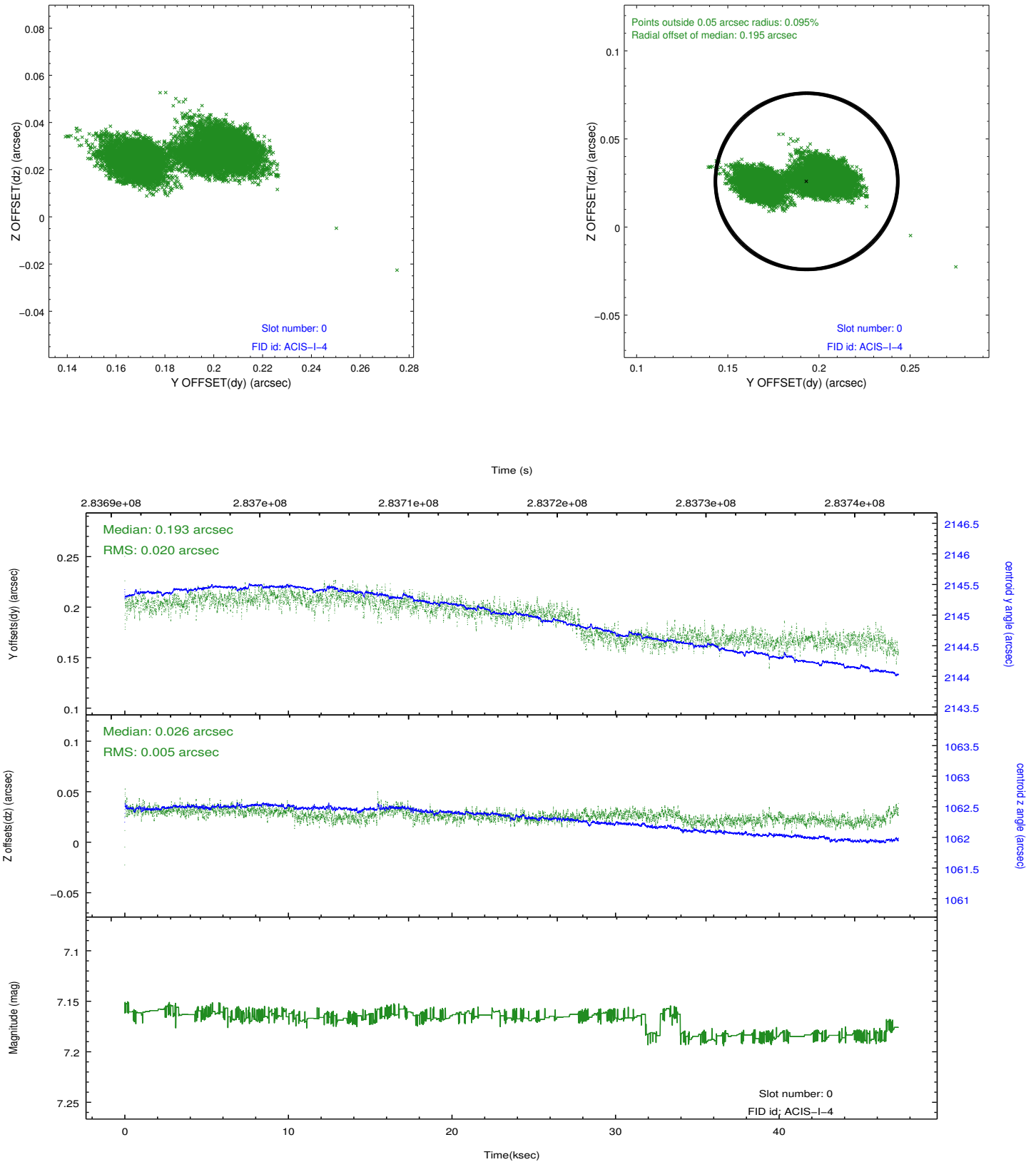


2.4.5 Slot 7

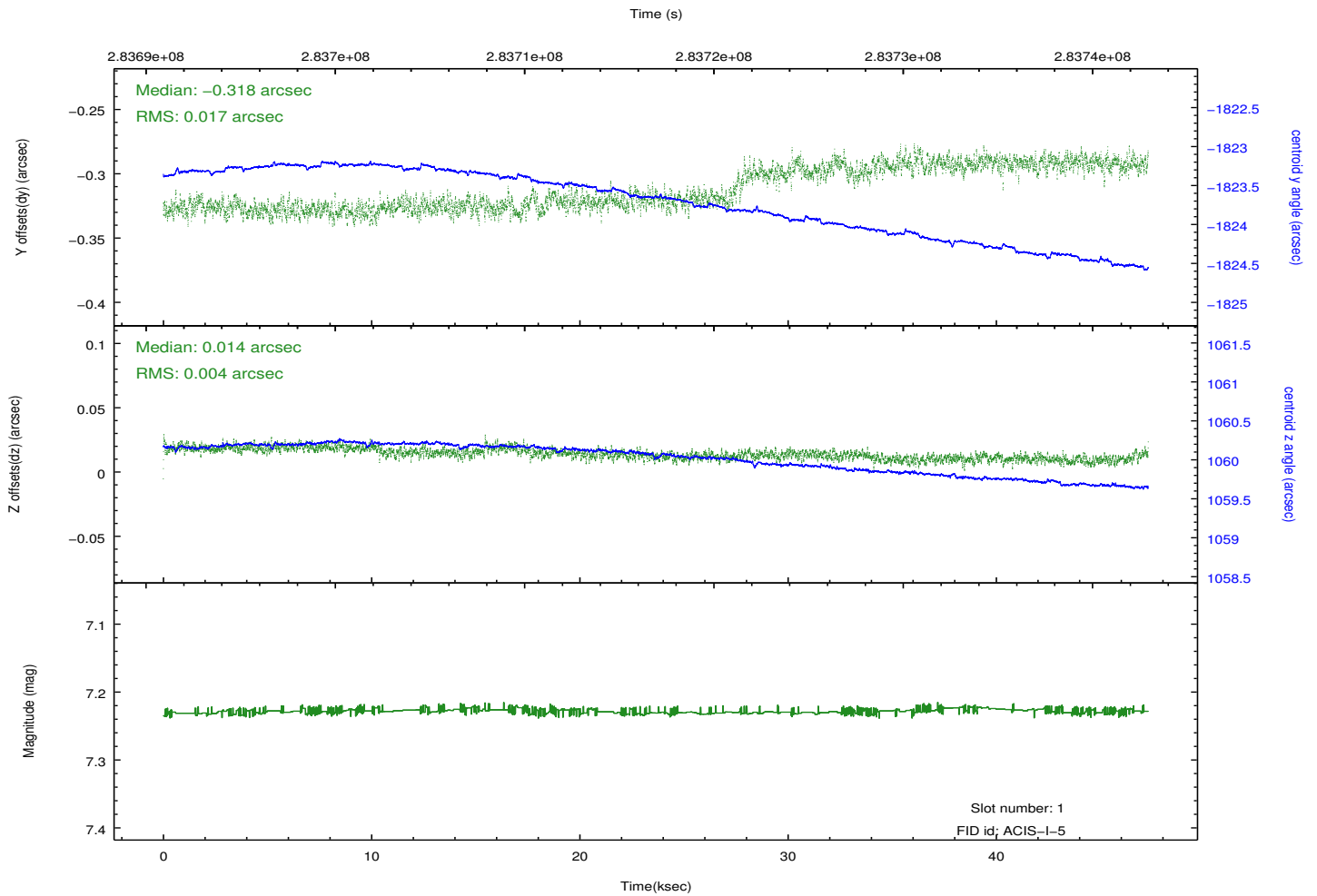
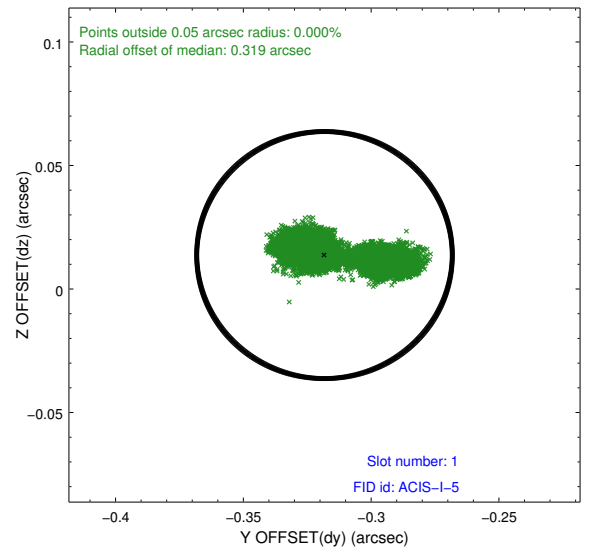
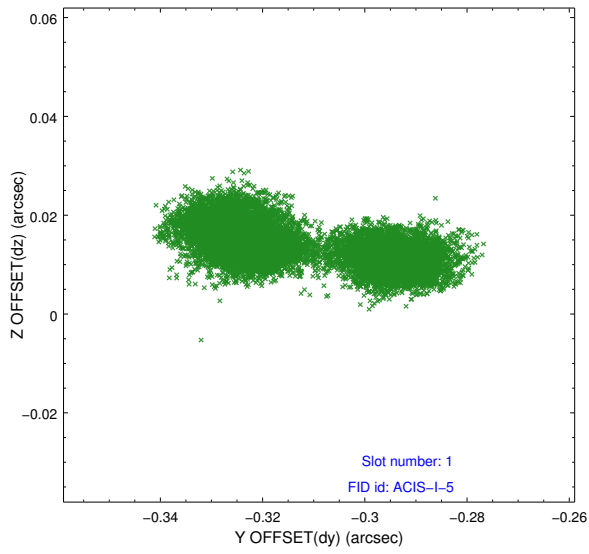


2.5 FID Slots

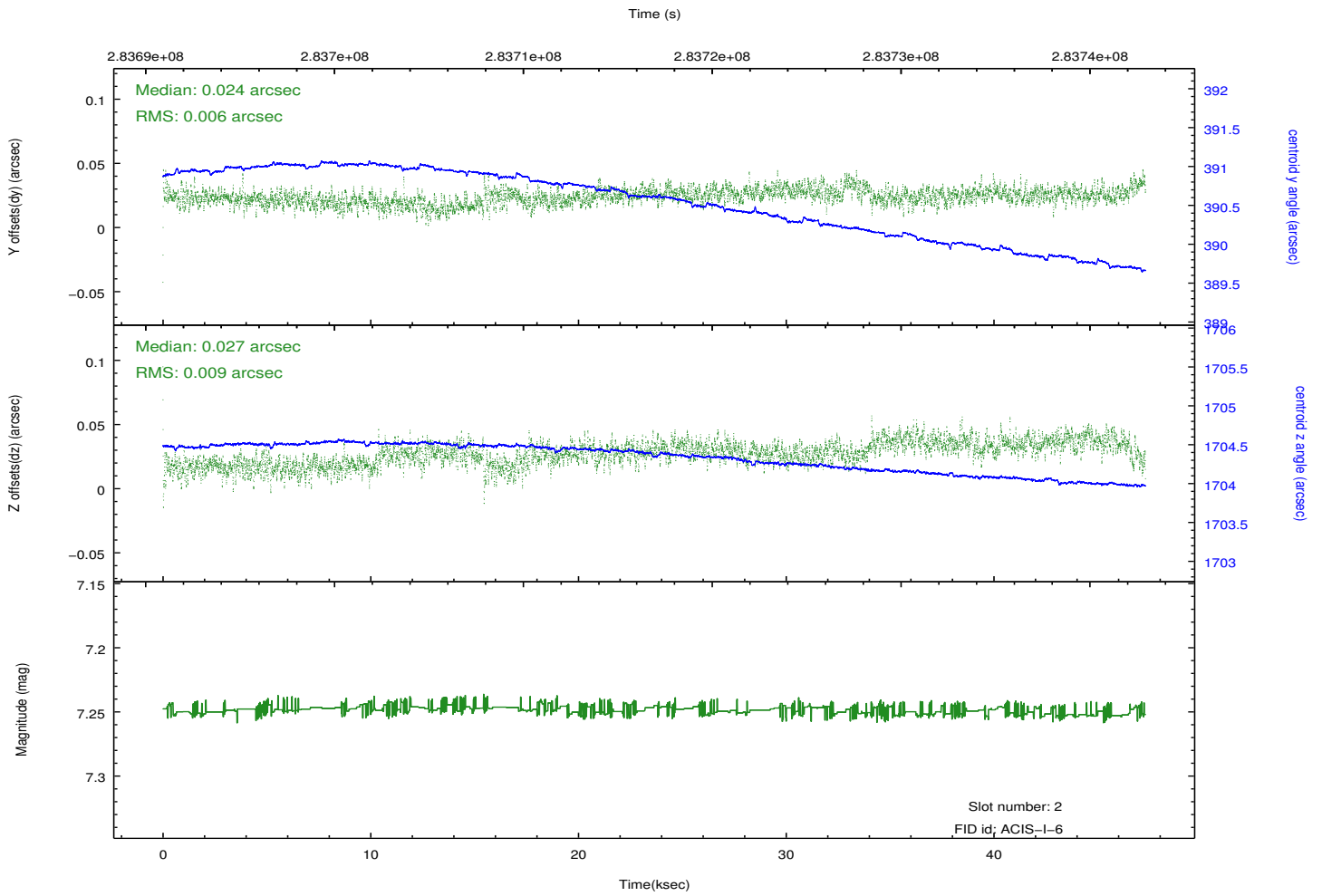
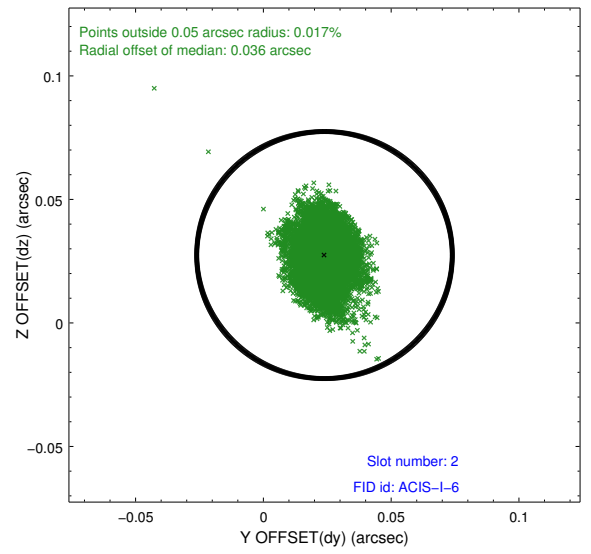
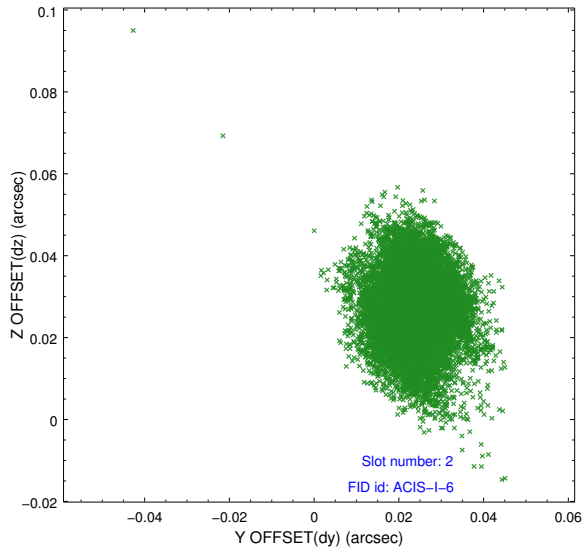
2.5.1 Slot 0



2.5.2 Slot 1



2.5.3 Slot 2



A Summary

A.1 Status

V&V Scientist	Jen Lauer
V&V Date (YYYY-MM-DD)	2012.04.19
V&V Edition	1
V&V Disposition and Status	OK
V&V Charge Time	46.9087178

A.2 Comments

Roll constraint met.