

V&V Reference Report

L2 ASCDS Version : 8.4.3.1

Observation 8006 - L2 Version 3
Chandra X-Ray Center

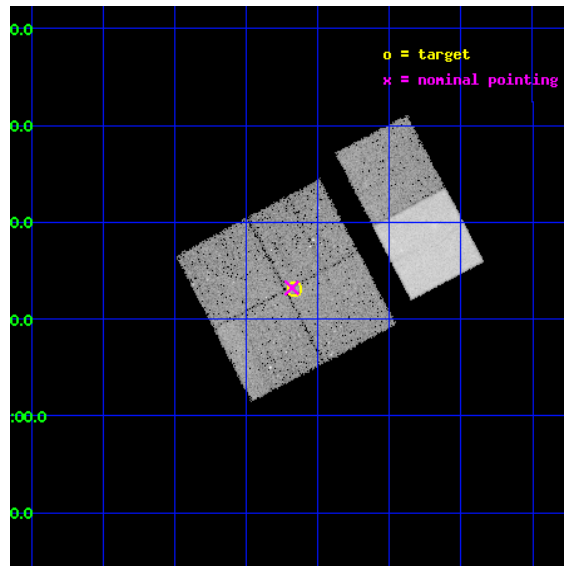
L2 Processing Date : Apr 16 2012

Contents

1	Front	2
2	OBI	3
2.1	OBI	3
2.1.1	Images	3
2.1.2	Bias	3
2.1.3	Parameters	4
2.1.4	Events	4
2.2	Compared Parameters	5
2.3	Aspect	6
2.4	Star Slots	9
2.4.1	Slot 3	9
2.4.2	Slot 4	10
2.4.3	Slot 5	11
2.4.4	Slot 6	12
2.4.5	Slot 7	13
2.5	FID Slots	14
2.5.1	Slot 0	14
2.5.2	Slot 1	15
2.5.3	Slot 2	16
A	Summary	17
A.1	Status	17
A.2	Comments	17

1 Front

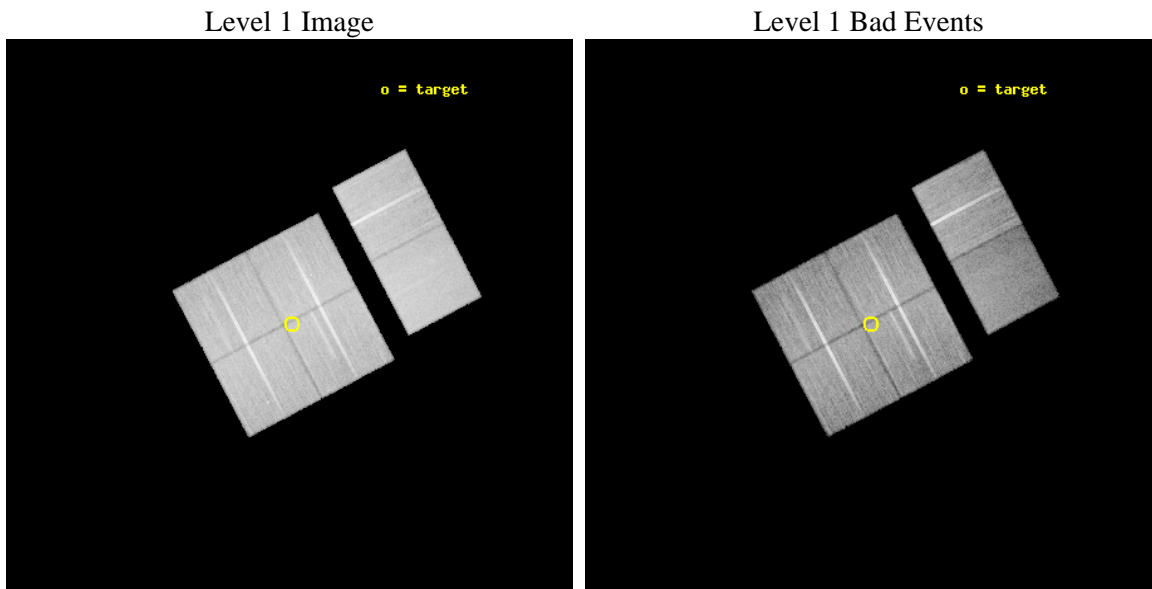
seq_num	900550	Sequence number
obs_id	8006	Observation id
title	THE CHANDRA-COSMOS SURVEY	Proposal title
observer	Dr. Martin Elvis	Principal investigator
object	C-COSMOS3-3	Source name
dtcycle	0	
cycle	P	events from which exps? Prim/Second/Both
ra_targ	150.166733	Observer's specified target RA [deg]
dec_targ	2.217392	Observer's specified target Dec [deg]
ra_nom	150.17032256002	Nominal RA [deg]
dec_nom	2.2204597508383	Nominal Dec [deg]
roll_nom	62.208566556396	Nominal Roll [deg]
revision	3	Processing version of data
ontime	27023.958938956	Sum of GTIs [s]
livetime	26681.765298997	Livetime [s]
ontime0	27020.717908919	Sum of GTIs [s]
ontime1	27027.199899375	Sum of GTIs [s]
ontime2	27023.958918989	Sum of GTIs [s]
ontime3	27023.958938956	Sum of GTIs [s]
ontime6	27027.199899375	Sum of GTIs [s]
ontime7	27027.199899375	Sum of GTIs [s]
l2events	185698	Number of level 2 events



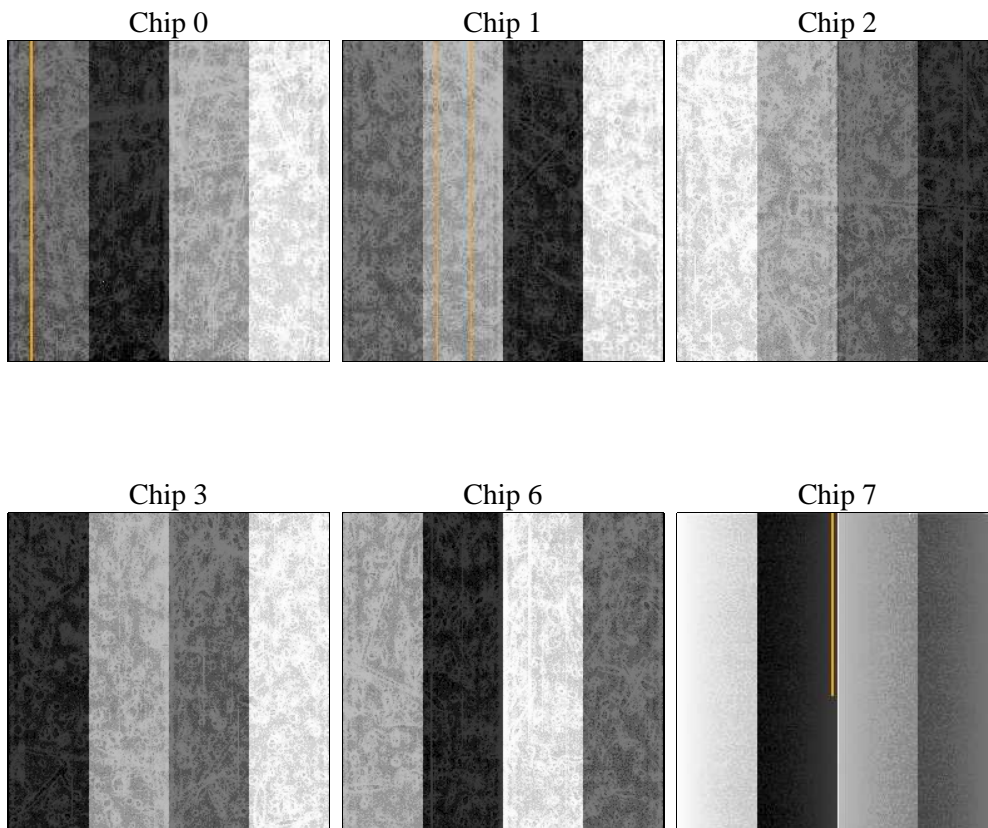
2 OBI

2.1 OBI

2.1.1 Images



2.1.2 Bias



2.1.3 Parameters

obi_num	0	Obi number	sched_exp_time	27000.000000	[s] Scheduled observation exposure time
ascdsver	8.4.3.1	Processing system revision	ontime	27023.958938956	Sum of GTIs [s]
caldsver	4.4.9	 	ontime0	27020.717908919	Sum of GTIs [s]
date	2012-04-16T13:52:28	Date and time of file creation	ontime1	27027.199899375	Sum of GTIs [s]
revision	3	Processing version of data	ontime2	27023.958918989	Sum of GTIs [s]
			ontime3	27023.958938956	Sum of GTIs [s]
			ontime6	27027.199899375	Sum of GTIs [s]
			ontime7	27027.199899375	Sum of GTIs [s]
			l1events	1230098	Number of level 1 events

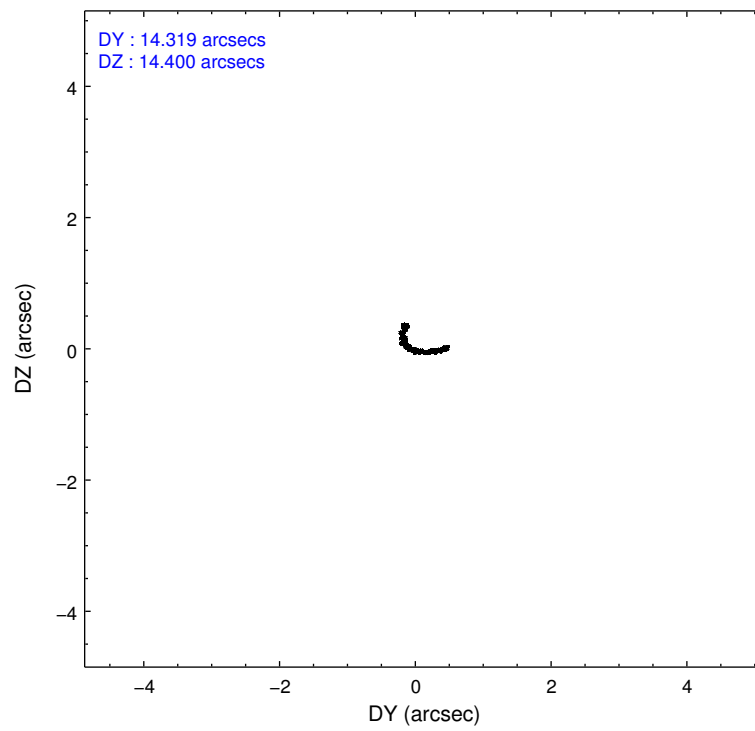
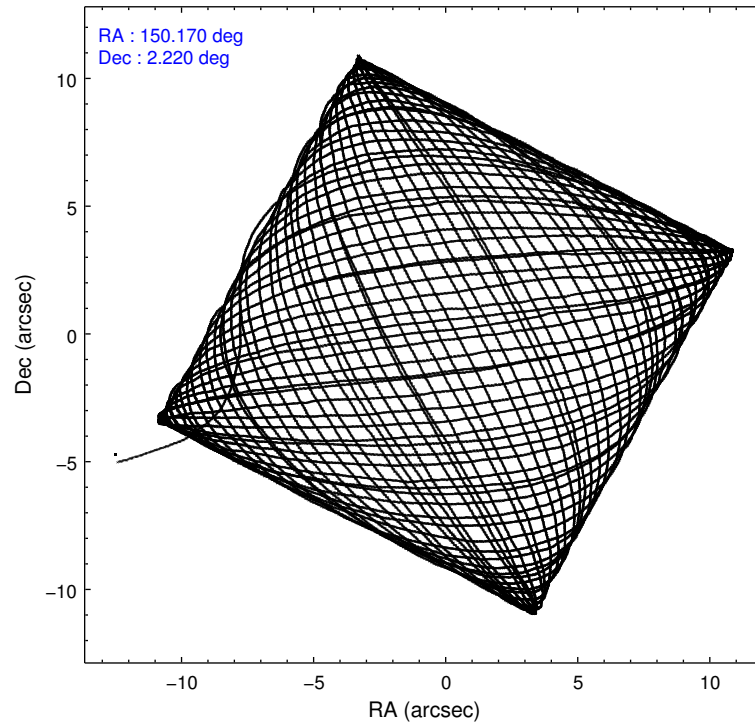
2.1.4 Events

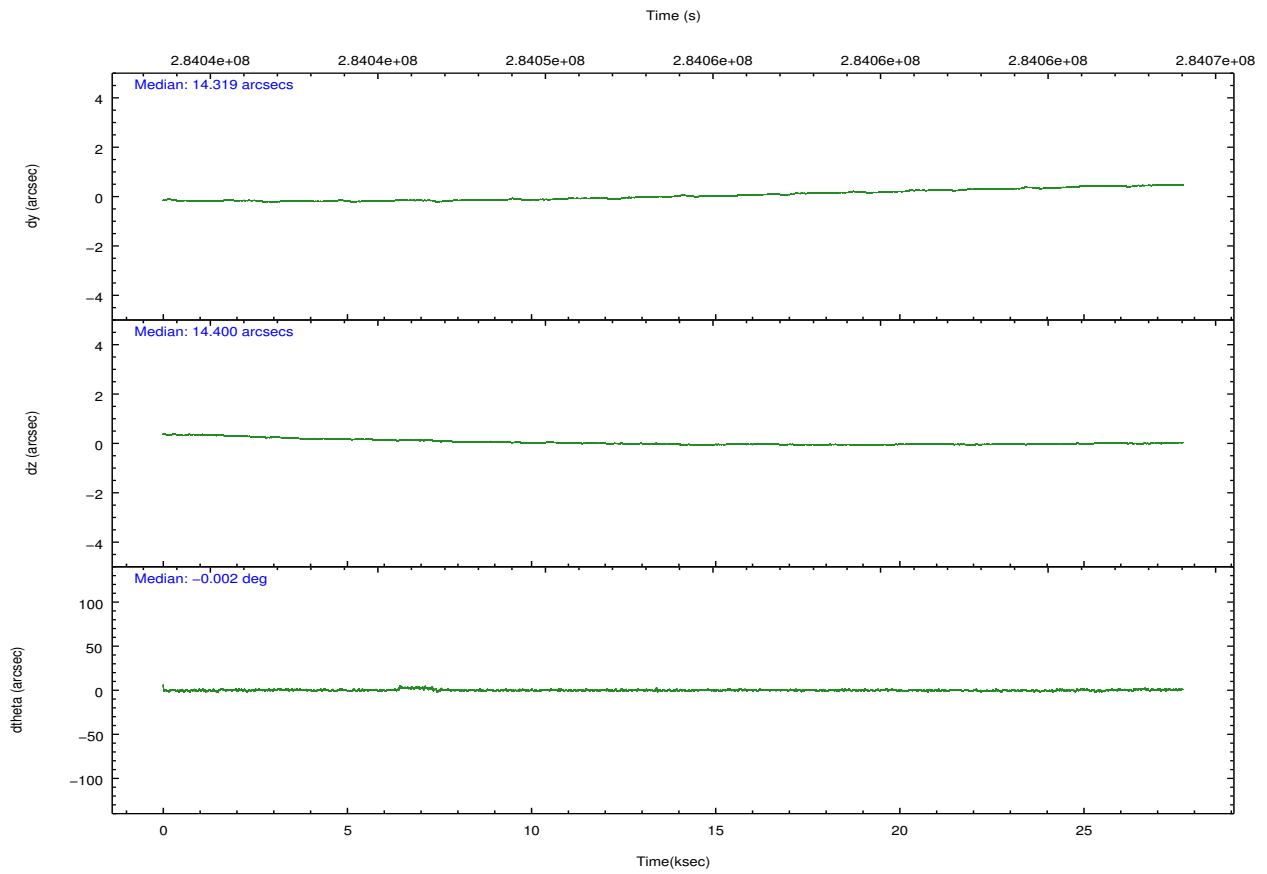
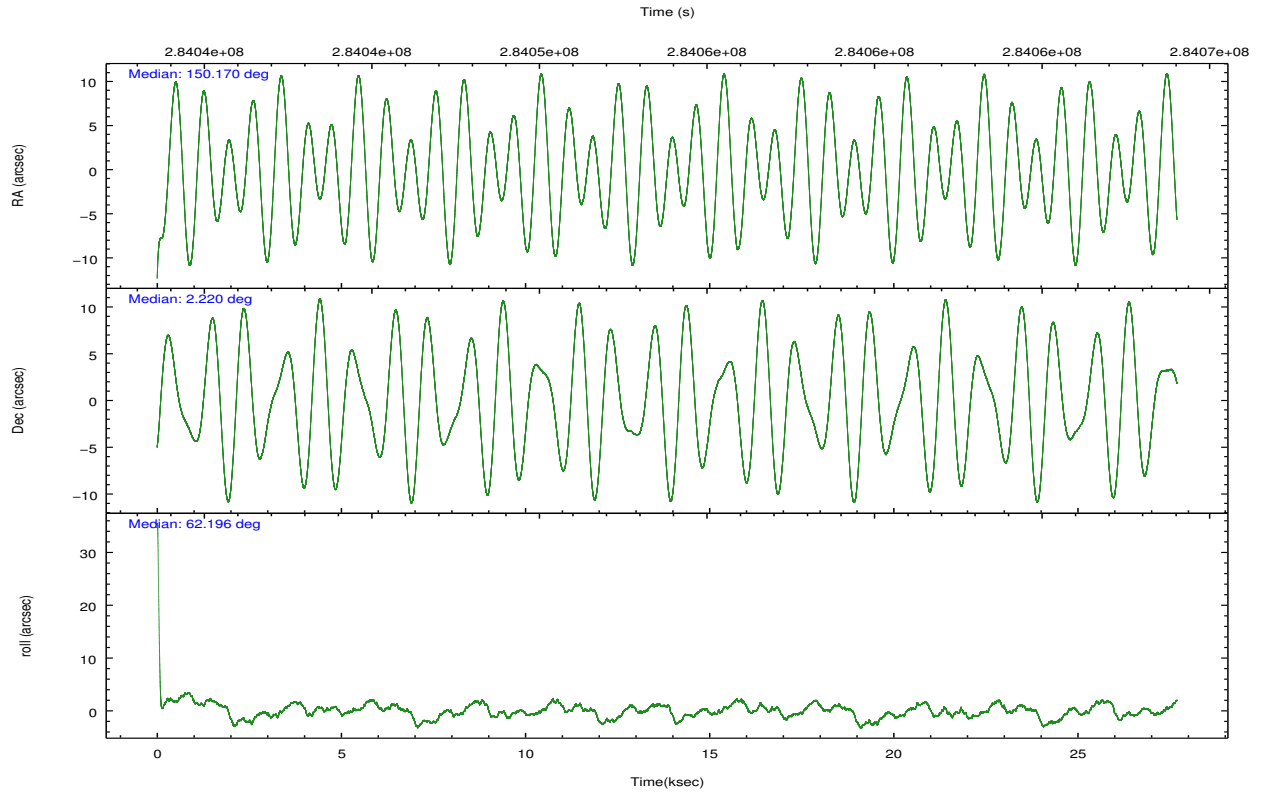
	ccd 0	ccd 1	ccd 2	ccd 3	ccd 6	ccd 7		ccd 0	ccd 1	ccd 2	ccd 3	ccd 6	ccd 7
level 1 events	191059	193304	208240	200448	210223	226824	grade 0 events	6945	8426	7166	6746	7232	9738
rejected events	170969	170395	188655	181546	189330	122902		3%	4%	3%	3%	3%	4%
rejected %	89%	88%	90%	90%	90%	54%	grade 1 events	103	112	120	110	86	253
								0%	0%	0%	0%	0%	0%
							grade 2 events	4896	5026	4732	4068	4609	20869
								2%	2%	2%	2%	2%	9%
							grade 3 events	2253	2483	2064	2145	2310	9681
								1%	1%	0%	1%	1%	4%
							grade 4 events	2156	2455	2077	2187	2267	9697
								1%	1%	0%	1%	1%	4%
							grade 5 events	6846	7867	6569	8007	8145	24221
								3%	4%	3%	3%	3%	10%
							grade 6 events	3842	4534	3547	3758	4480	53961
								2%	2%	1%	1%	2%	23%
							grade 7 events	164018	162401	181965	173427	181094	98404
								85%	84%	87%	86%	86%	43%

2.2 Compared Parameters

Parameter	Planned	Actual	Parameter	Planned	Actual
Instrument	ACIS	ACIS	Obspar format version number	7	7
Detector	ACIS-012367	ACIS-012367	Obspar file type	PREDICTED	ACTUAL
Grating	NONE	NONE	Obspar update status	NONE	UPDATED
Data mode	VFAINT	VFAINT	CCD I0 on	Y	Y
Observation mode	POINTING	POINTING	CCD I1 on	Y	Y
[deg] Pointing RA	150.171499	150.1703225600151	CCD I2 on	Y	Y
[deg] Pointing Dec	2.192967	2.220459750838257	CCD I3 on	Y	Y
[deg] Pointing Roll	61.999813	62.20856655639553	CCD S0 on	N	N
[mm] SIM focus pos	-0.782348	-0.7809083437167272	CCD S1 on	N	N
[mm] SIM defocus	0	0.001439871863259334	CCD S2 on	O1	Y
[mm] SIM translation stage pos	-233.592463	-233.5874344608287	CCD S3 on	O2	Y
[mm] SIM translation stage offset	0	-0.005018542100998502	CCD S4 on	N	N
[s] Observation start time (MET)	284040656.184000	284039394.80712	CCD S5 on	N	N
Observation start date	2007-01-01T12:09:51	2007-01-01T11:49:54	Number of optional ACIS chips dropped	0	0
[s] Observation end time (MET)	284067656.184000	284068924.03352	On-chip summing requested	N	N
Observation end date	2007-01-01T19:39:51	2007-01-01T20:02:04	Subarray requested	NONE	NONE
Read mode	TIMED	TIMED	Alternating exposures requested	N	N
			[s] Primary exposure time	0.000000	3.2

2.3 Aspect



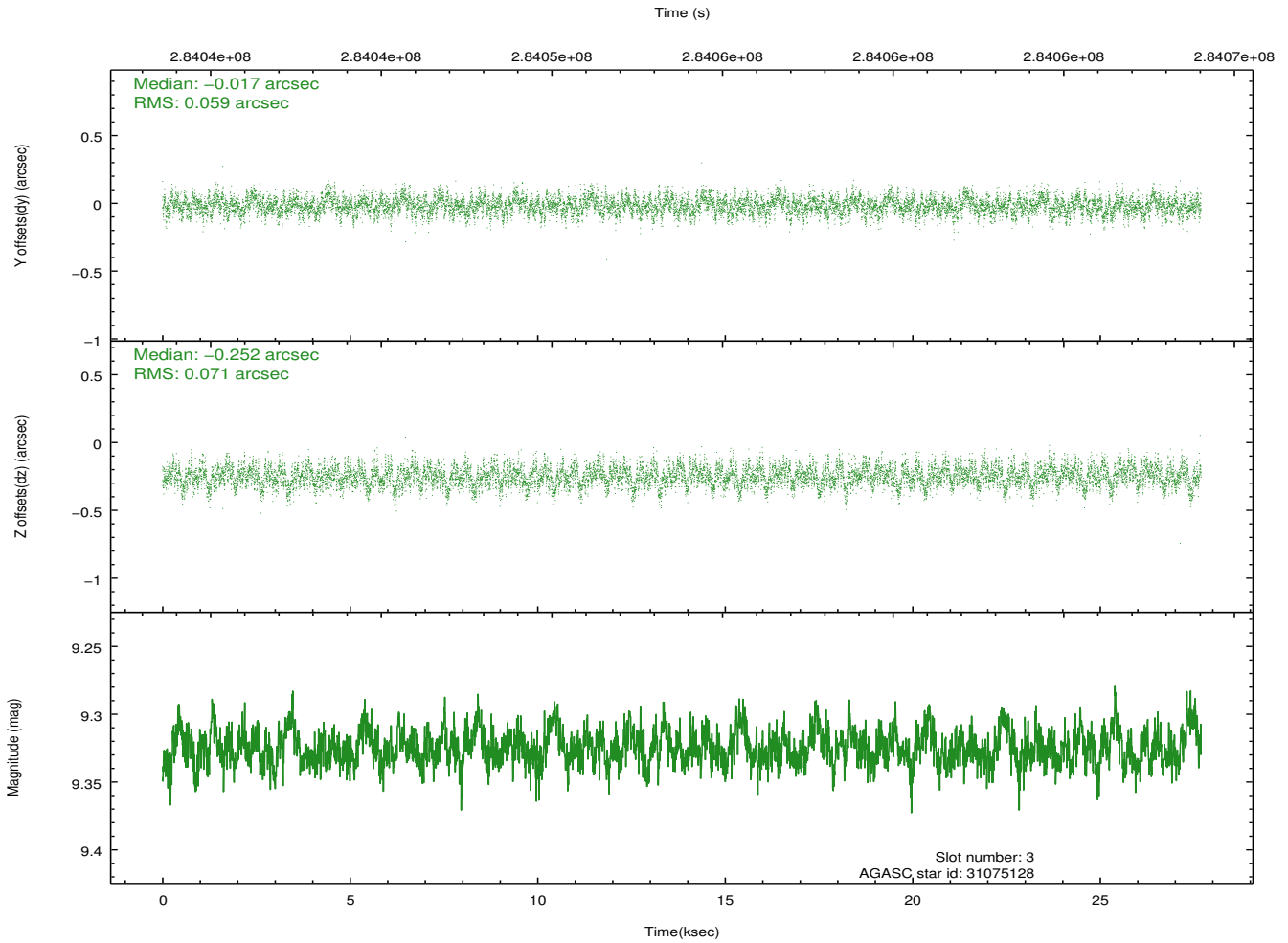
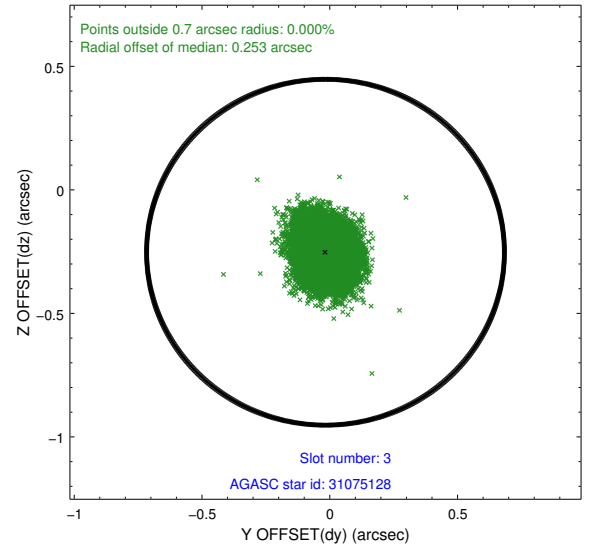
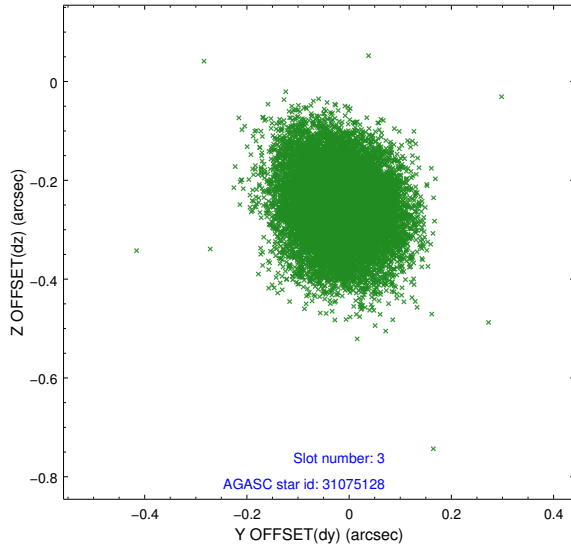


Slot Statistics

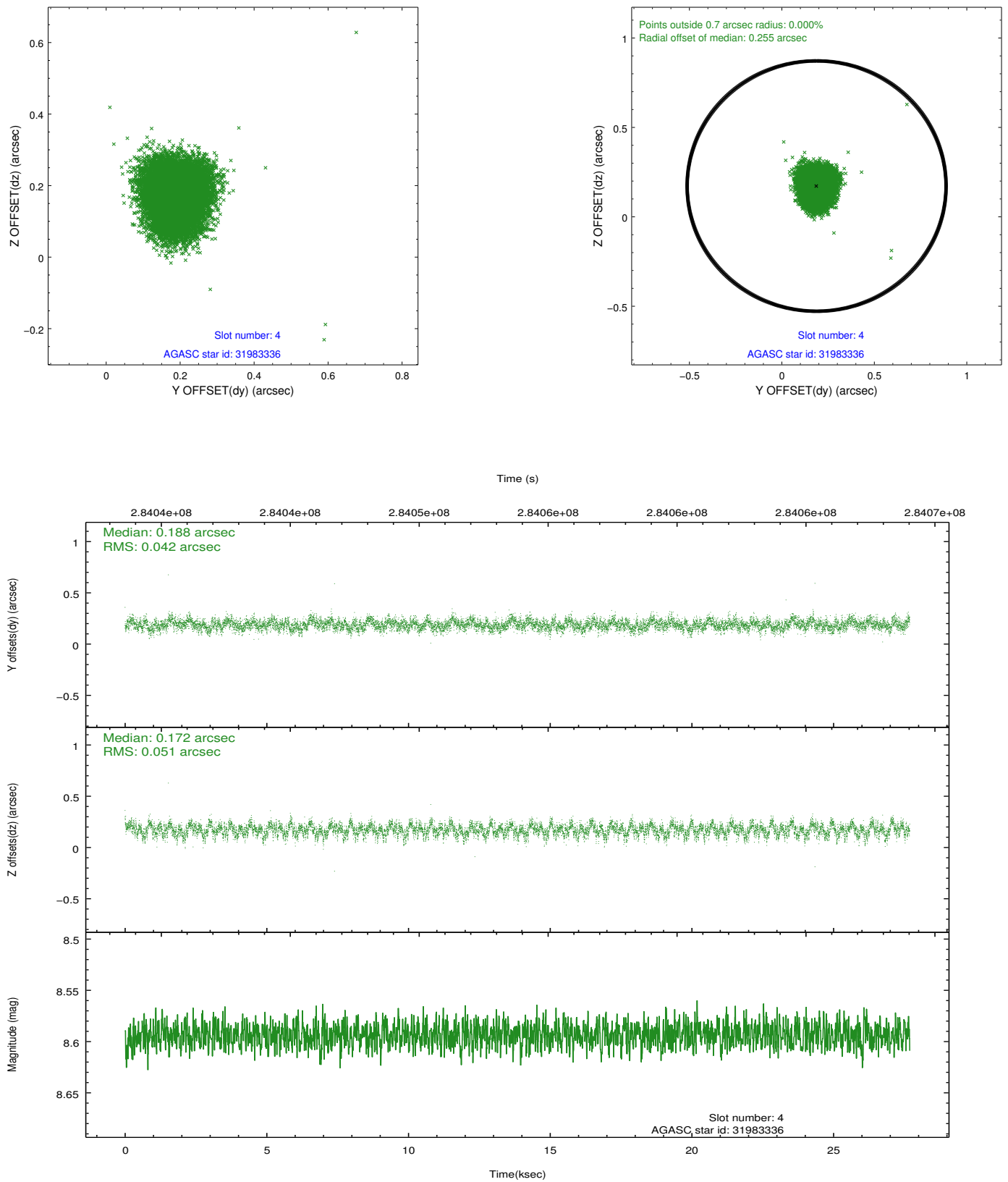
slot	status	id	mag	n_pts	med_dy	med_dz	dr1	dr2	ra	dec	mean_y	mean_z
0	FID	ACIS-I-2	7.14	6752	-0.092	-0.073	0.014	0.025	0.000000	0.000000	-769.16	-844.47
1	FID	ACIS-I-4	7.16	6753	0.245	0.075	0.011	0.022	0.000000	0.000000	2145.20	1061.80
2	FID	ACIS-I-5	7.22	6754	-0.253	0.067	0.011	0.021	0.000000	0.000000	-1823.02	1059.76
3	GUIDE	31075128	9.32	13494	-0.017	-0.252	0.098	0.158	149.584516	2.364347	-446.20	2153.65
4	GUIDE	31983336	8.59	13505	0.188	0.172	0.070	0.114	150.429924	2.291234	749.52	-654.22
5	GUIDE	31986152	9.02	13499	-0.144	-0.053	0.112	0.171	150.840314	2.057585	700.40	-2352.86
6	GUIDE	32374896	9.22	13495	-0.098	0.195	0.087	0.141	150.682269	2.512794	1879.79	-1081.06
7	GUIDE	31463496	9.47	13494	0.071	-0.063	0.109	0.171	149.845020	2.964001	1900.05	2339.86

2.4 Star Slots

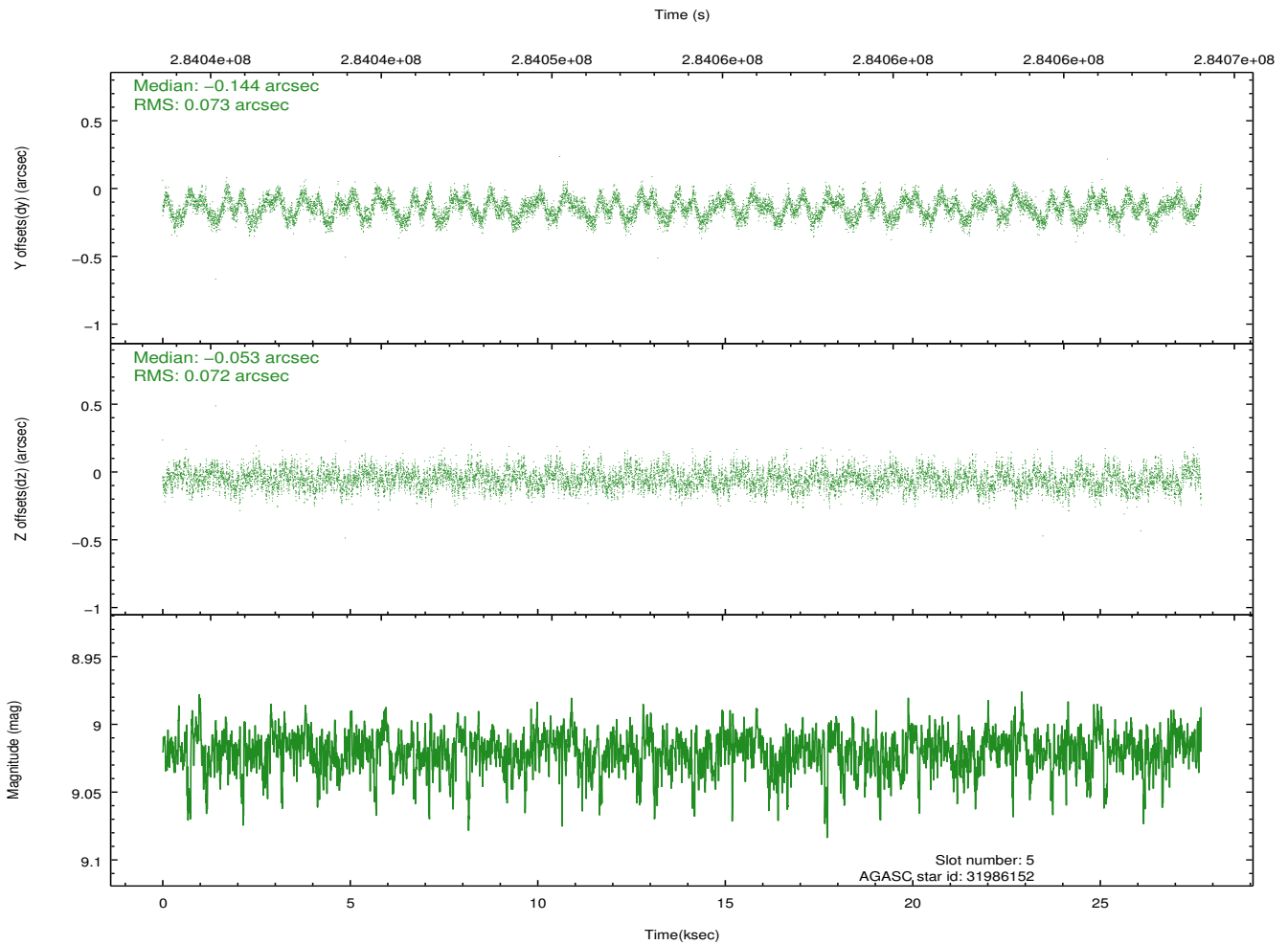
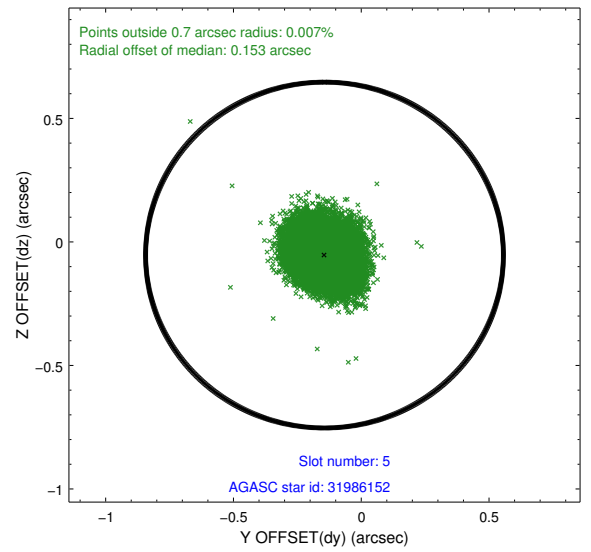
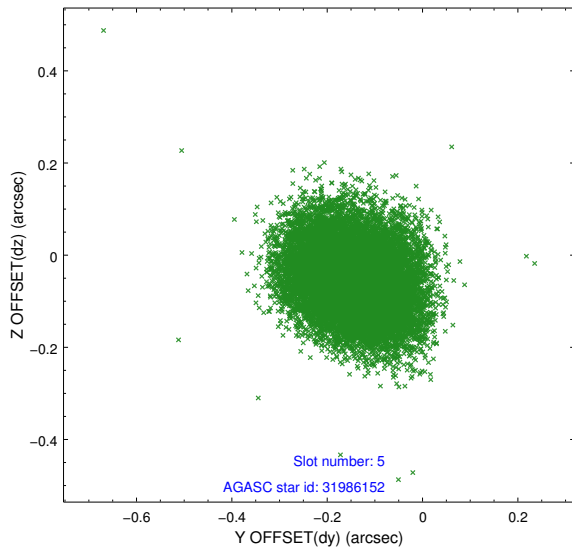
2.4.1 Slot 3



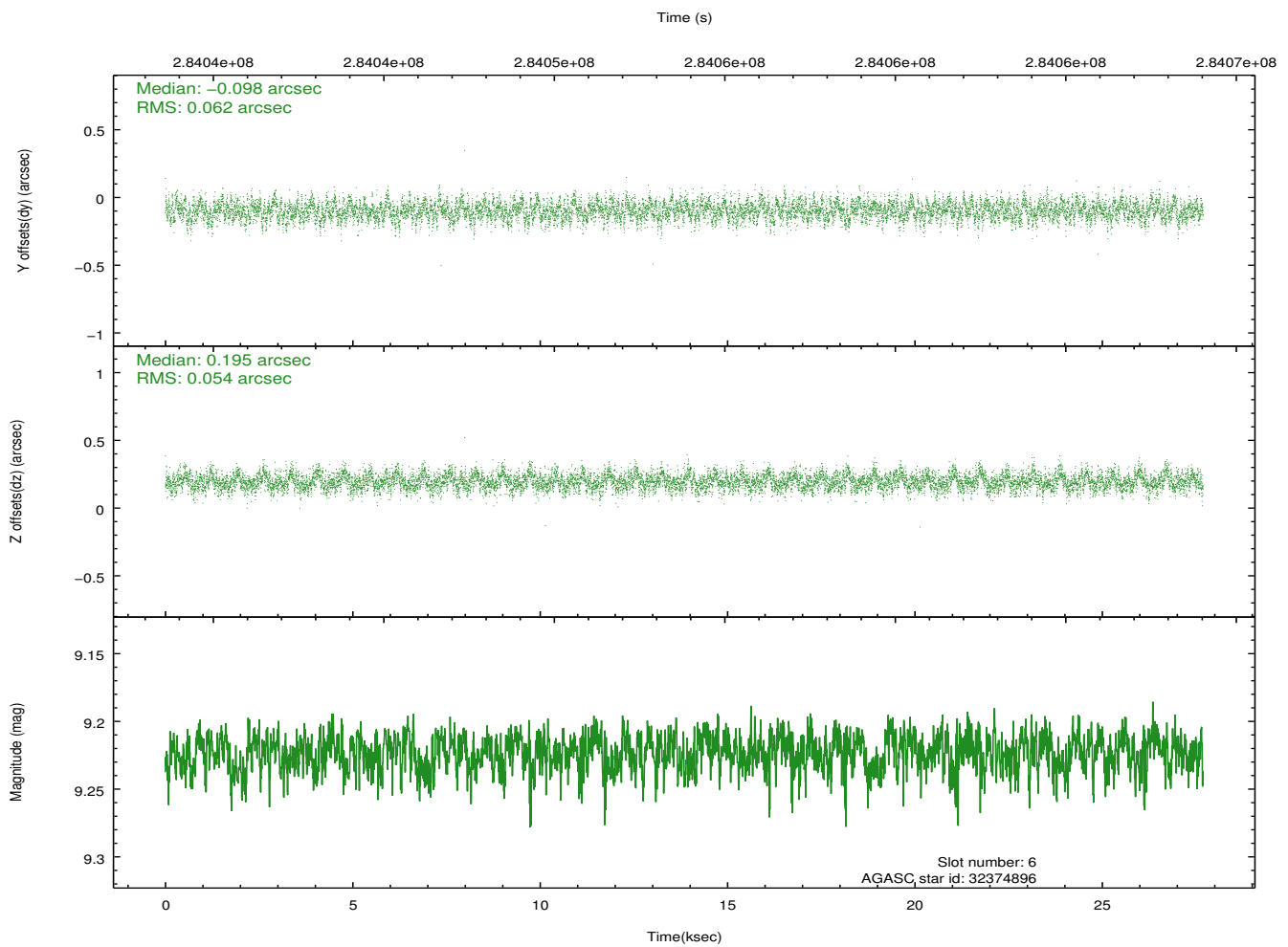
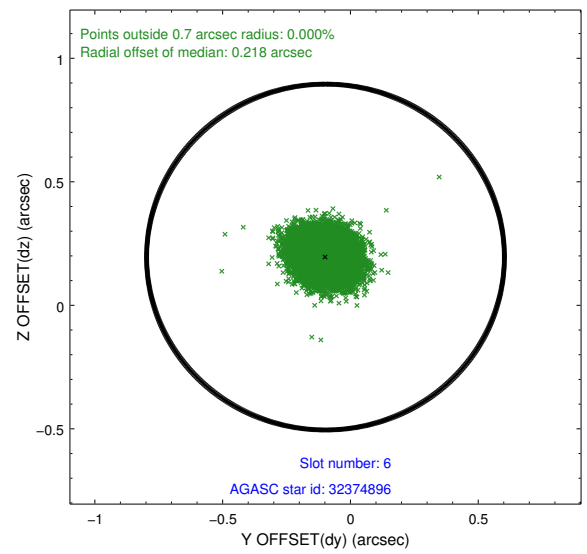
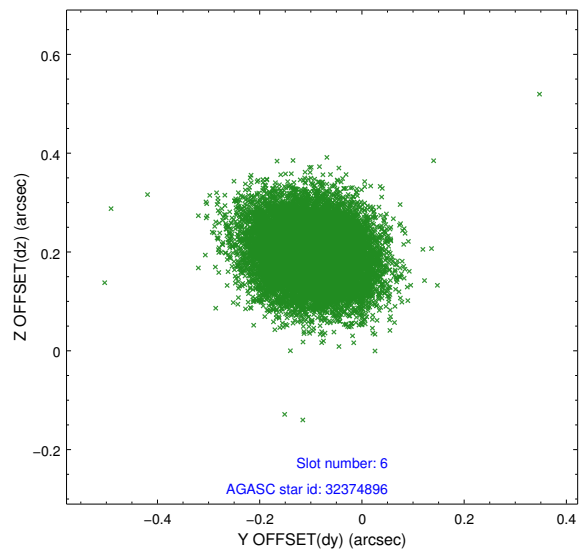
2.4.2 Slot 4



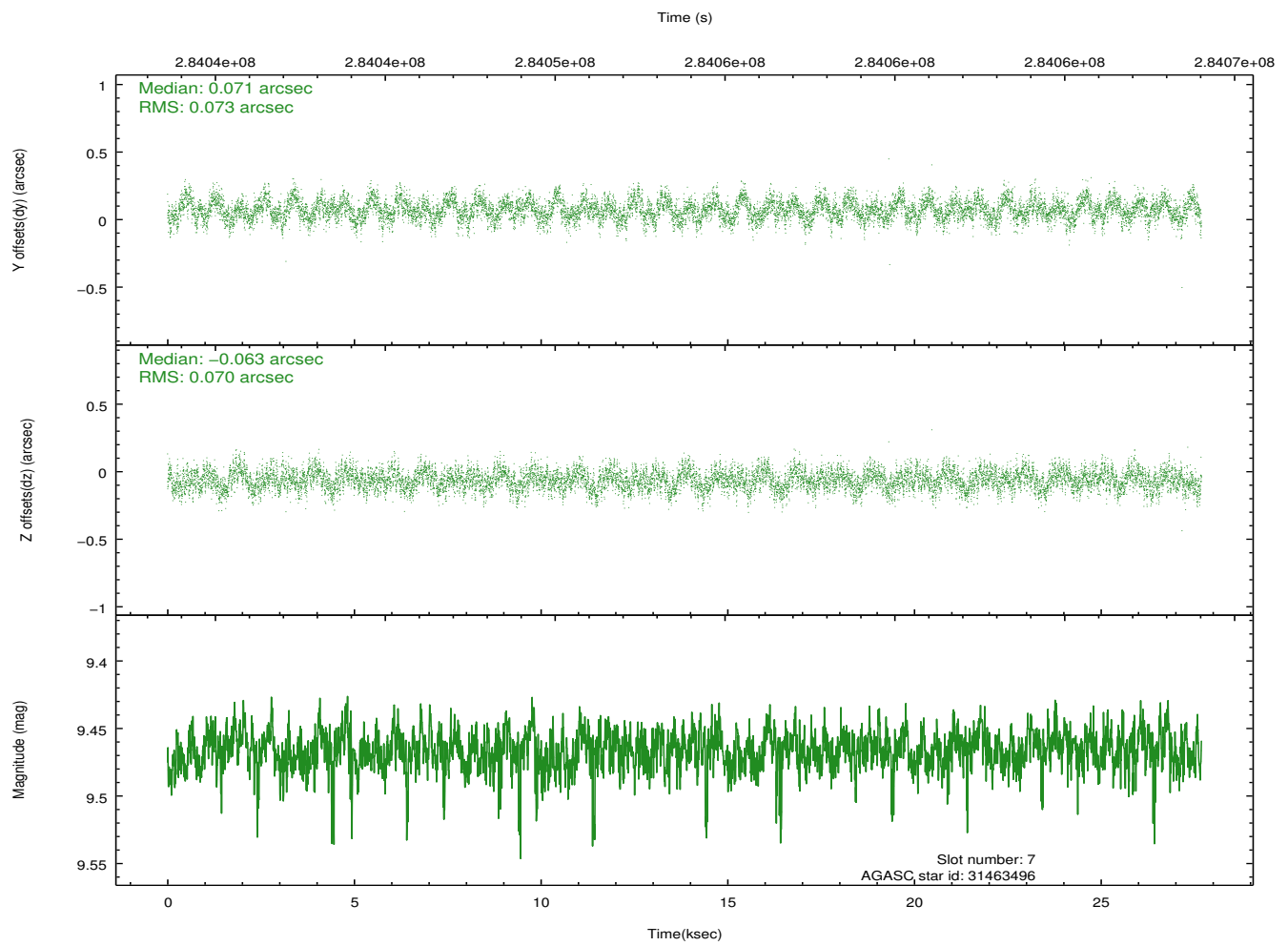
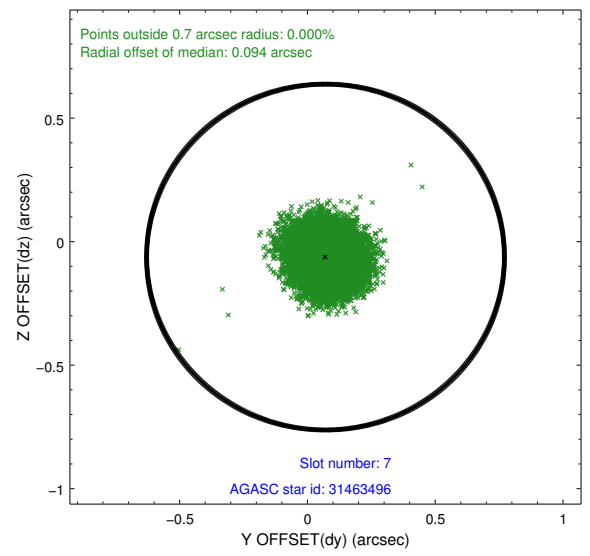
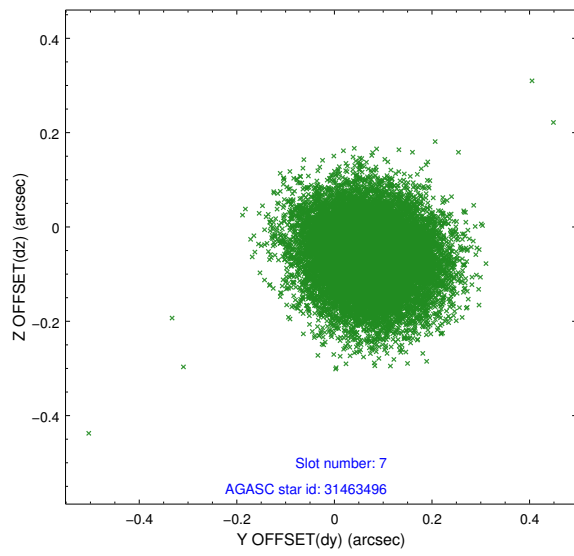
2.4.3 Slot 5



2.4.4 Slot 6

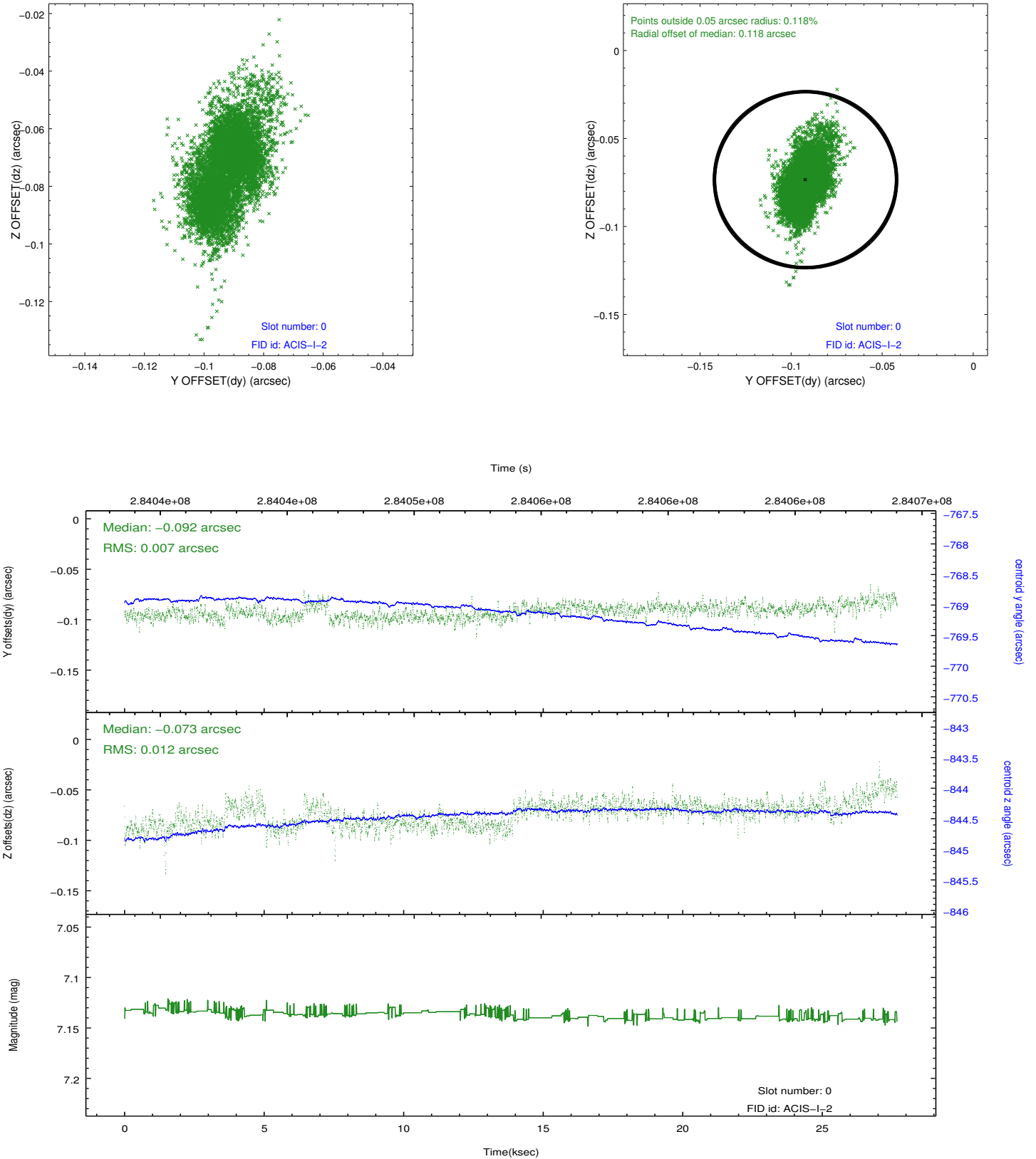


2.4.5 Slot 7

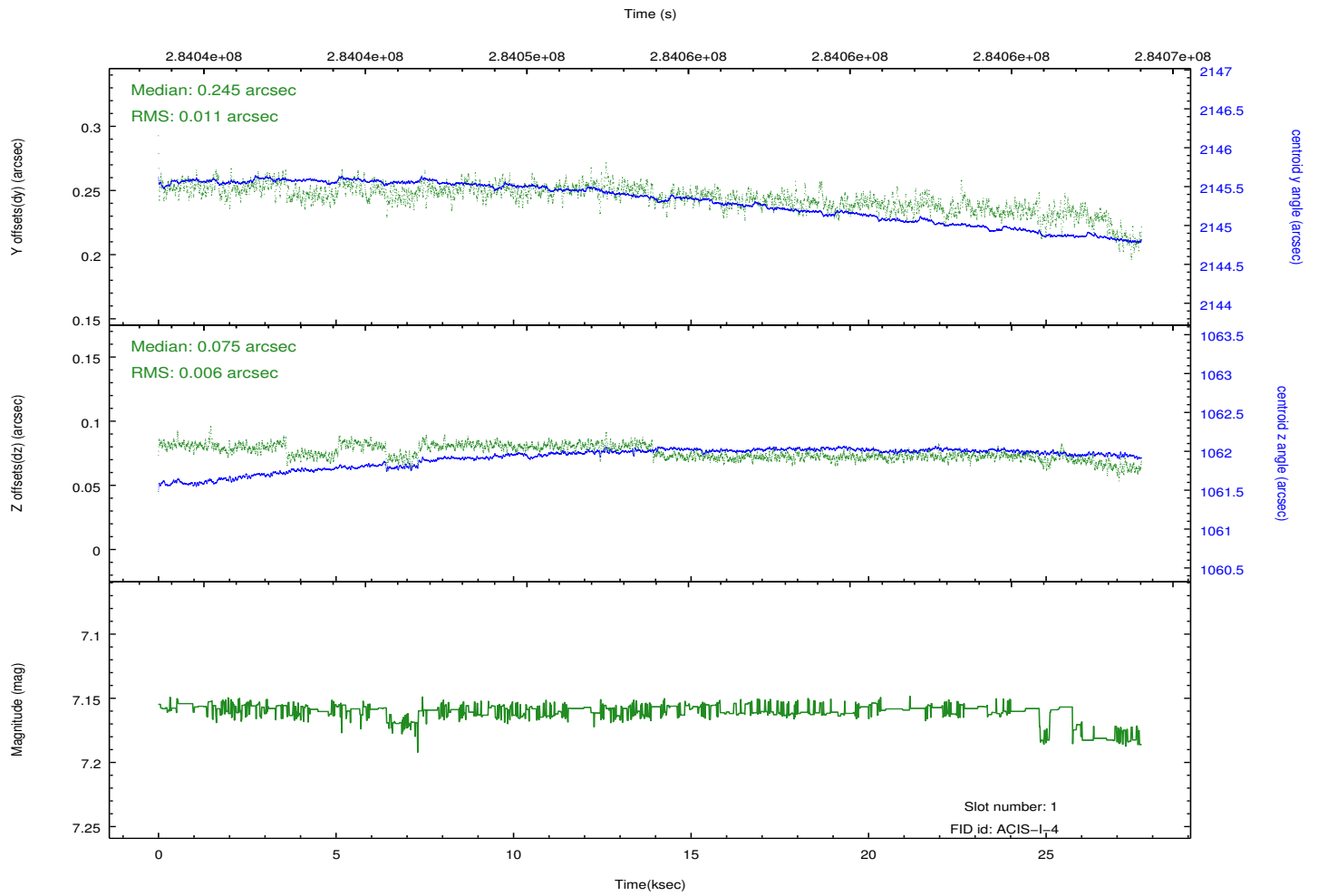
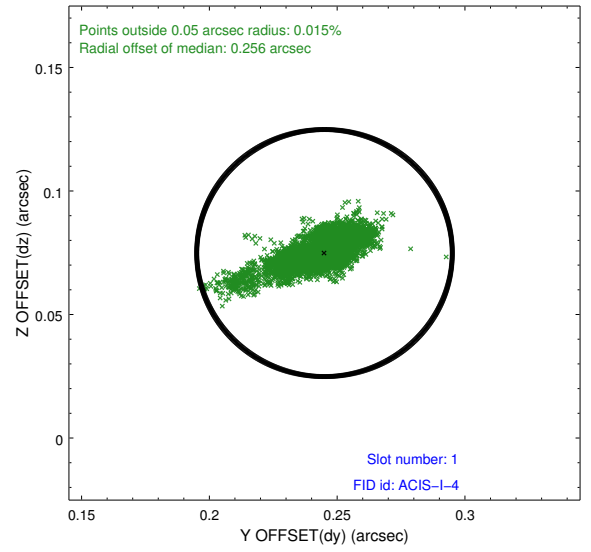
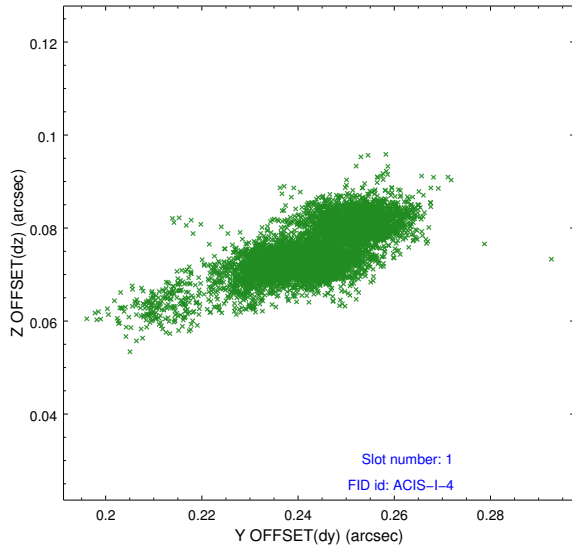


2.5 FID Slots

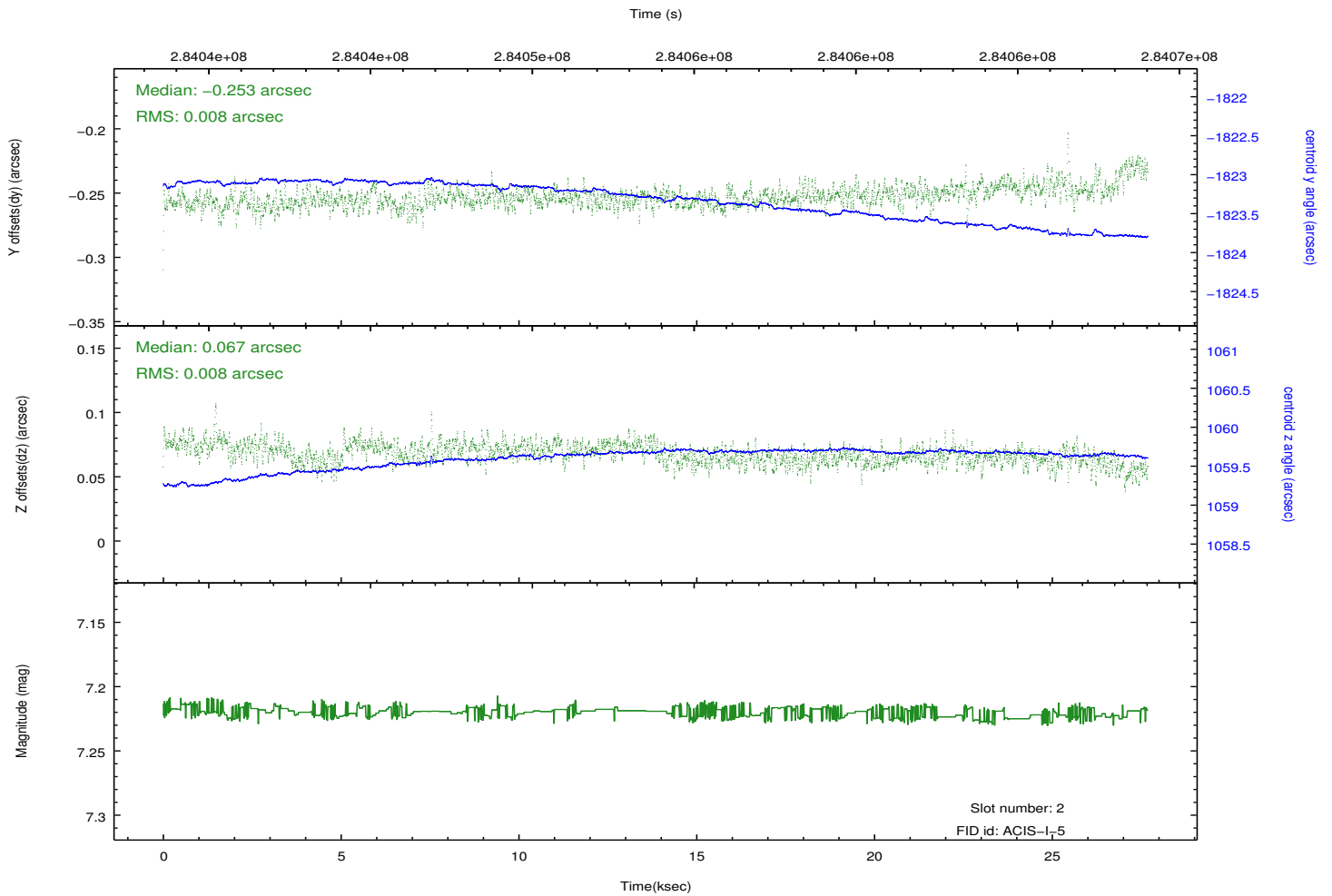
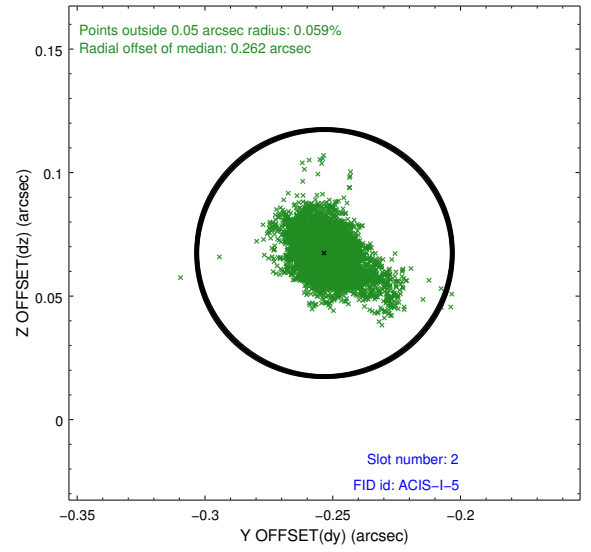
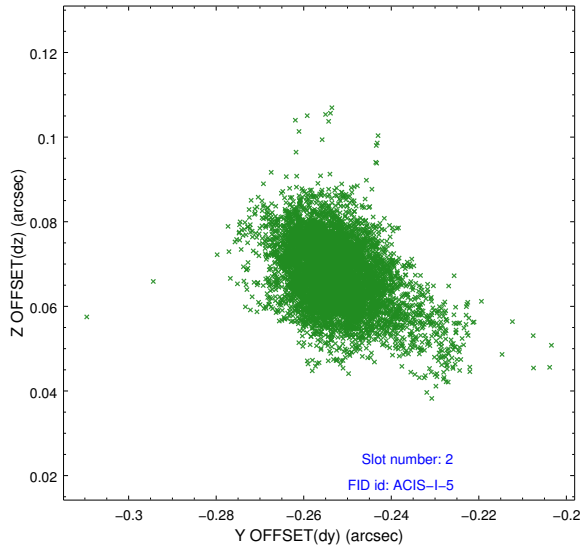
2.5.1 Slot 0



2.5.2 Slot 1



2.5.3 Slot 2



A Summary

A.1 Status

V&V Scientist	Jen Lauer
V&V Date (YYYY-MM-DD)	2012.04.19
V&V Edition	1
V&V Disposition and Status	OK
V&V Charge Time	27.0239589

A.2 Comments

Roll preference met.