

V&V Reference Report

L2 ASCDS Version : 8.4.4

Observation 8016 - L2 Version 3
Chandra X-Ray Center

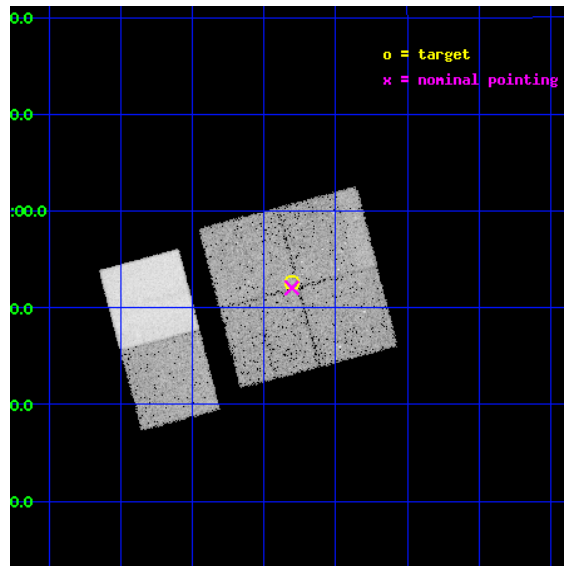
L2 Processing Date : Apr 23 2012

Contents

1	Front	2
2	OBI	3
2.1	OBI	3
2.1.1	Images	3
2.1.2	Bias	3
2.1.3	Parameters	4
2.1.4	Events	4
2.2	Compared Parameters	5
2.3	Aspect	6
2.4	Star Slots	9
2.4.1	Slot 3	9
2.4.2	Slot 4	10
2.4.3	Slot 5	11
2.4.4	Slot 6	12
2.4.5	Slot 7	13
2.5	FID Slots	14
2.5.1	Slot 0	14
2.5.2	Slot 1	15
2.5.3	Slot 2	16
A	Summary	17
A.1	Status	17
A.2	Comments	17

1 Front

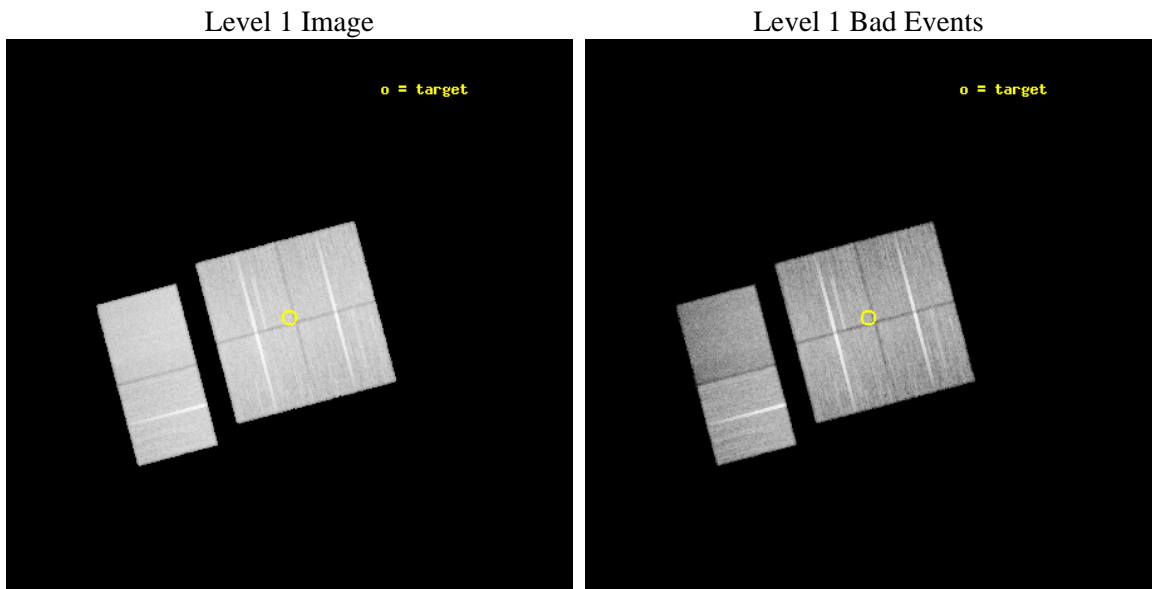
seq_num	900560	Sequence number
obs_id	8016	Observation id
title	THE CHANDRA-COSMOS SURVEY	Proposal title
observer	Dr. Martin Elvis	Principal investigator
object	C-COSMOS5-1	Source name
dtcycle	0	
cycle	P	events from which exps? Prim/Second/Both
ra_targ	150.326033	Observer's specified target RA [deg]
dec_targ	1.87565	Observer's specified target Dec [deg]
ra_nom	150.32639578189	Nominal RA [deg]
dec_nom	1.8675887064844	Nominal Dec [deg]
roll_nom	255.20868917063	Nominal Roll [deg]
revision	3	Processing version of data
ontime	24179.199909985	Sum of GTIs [s]
livetime	23873.028321759	Livetime [s]
ontime0	24179.199909985	Sum of GTIs [s]
ontime1	24172.717929363	Sum of GTIs [s]
ontime2	24172.717929363	Sum of GTIs [s]
ontime3	24179.199909985	Sum of GTIs [s]
ontime6	24179.199909985	Sum of GTIs [s]
ontime7	24179.199909985	Sum of GTIs [s]
l2events	174637	Number of level 2 events



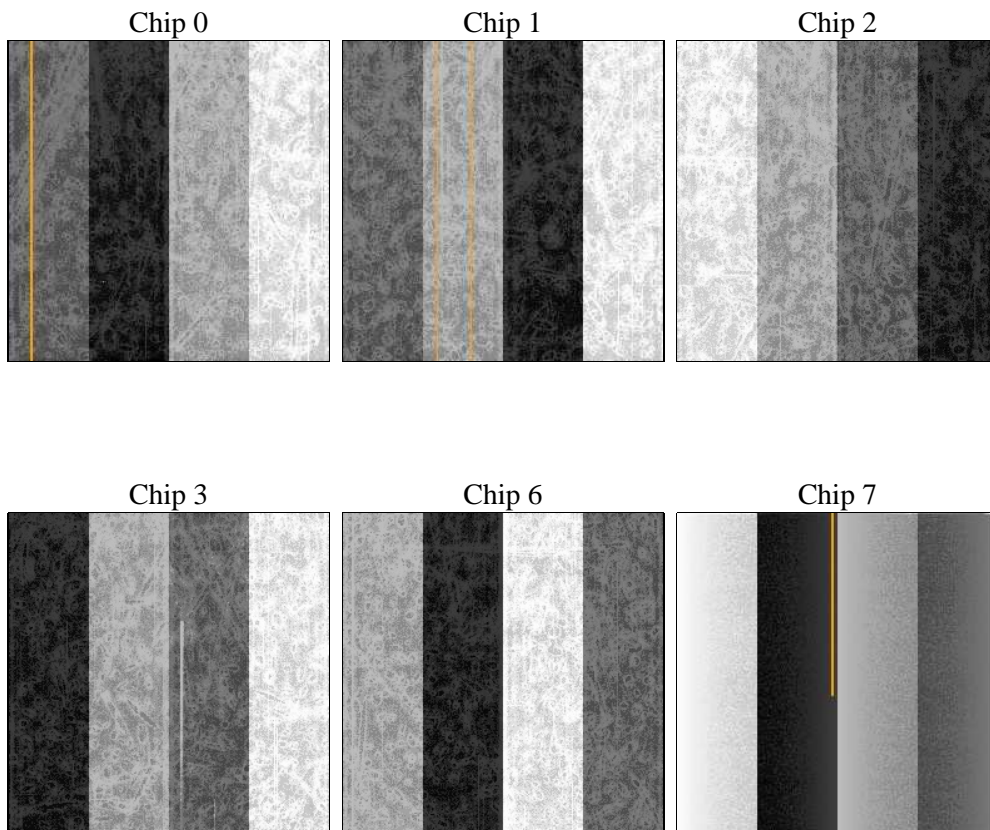
2 OBI

2.1 OBI

2.1.1 Images



2.1.2 Bias



2.1.3 Parameters

obi_num	0	Obi number	sched_exp_time	24000.000000	[s] Scheduled observation exposure time
ascdsver	8.4.4	Processing system revision	ontime	24179.199909985	Sum of GTIs [s]
caldbver	4.4.9	 	ontime0	24179.199909985	Sum of GTIs [s]
date	2012-04-23T10:31:51	Date and time of file creation	ontime1	24172.717929363	Sum of GTIs [s]
revision	3	Processing version of data	ontime2	24172.717929363	Sum of GTIs [s]
			ontime3	24179.199909985	Sum of GTIs [s]
			ontime6	24179.199909985	Sum of GTIs [s]
			ontime7	24179.199909985	Sum of GTIs [s]
			l1events	1228185	Number of level 1 events

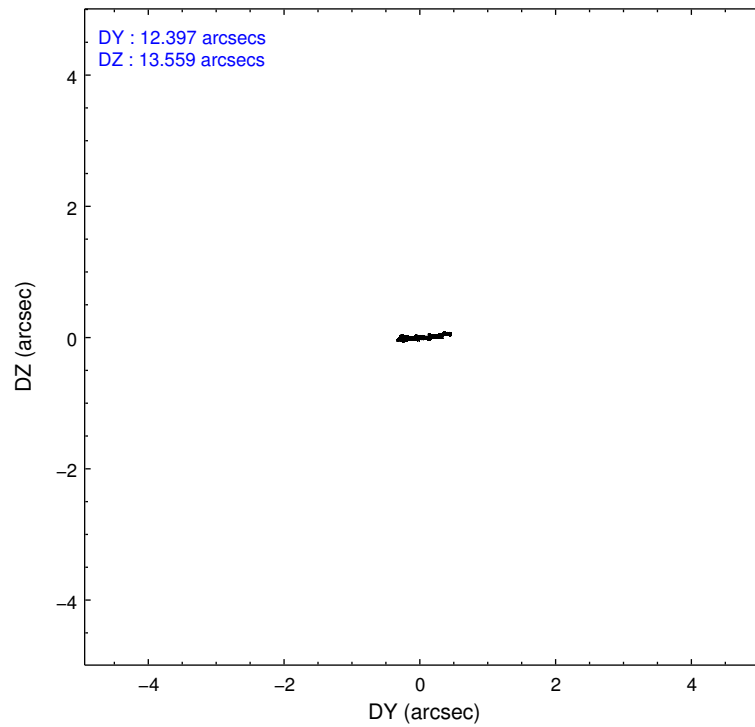
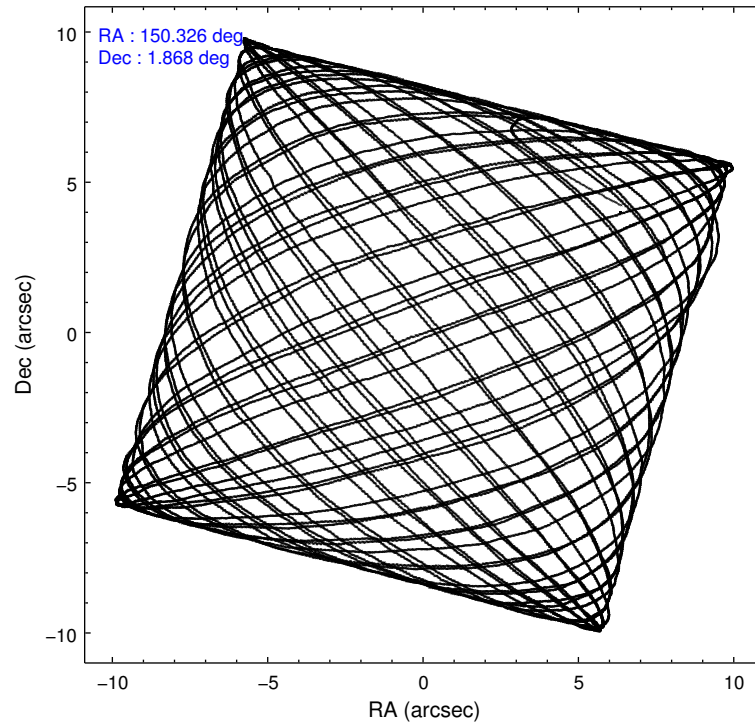
2.1.4 Events

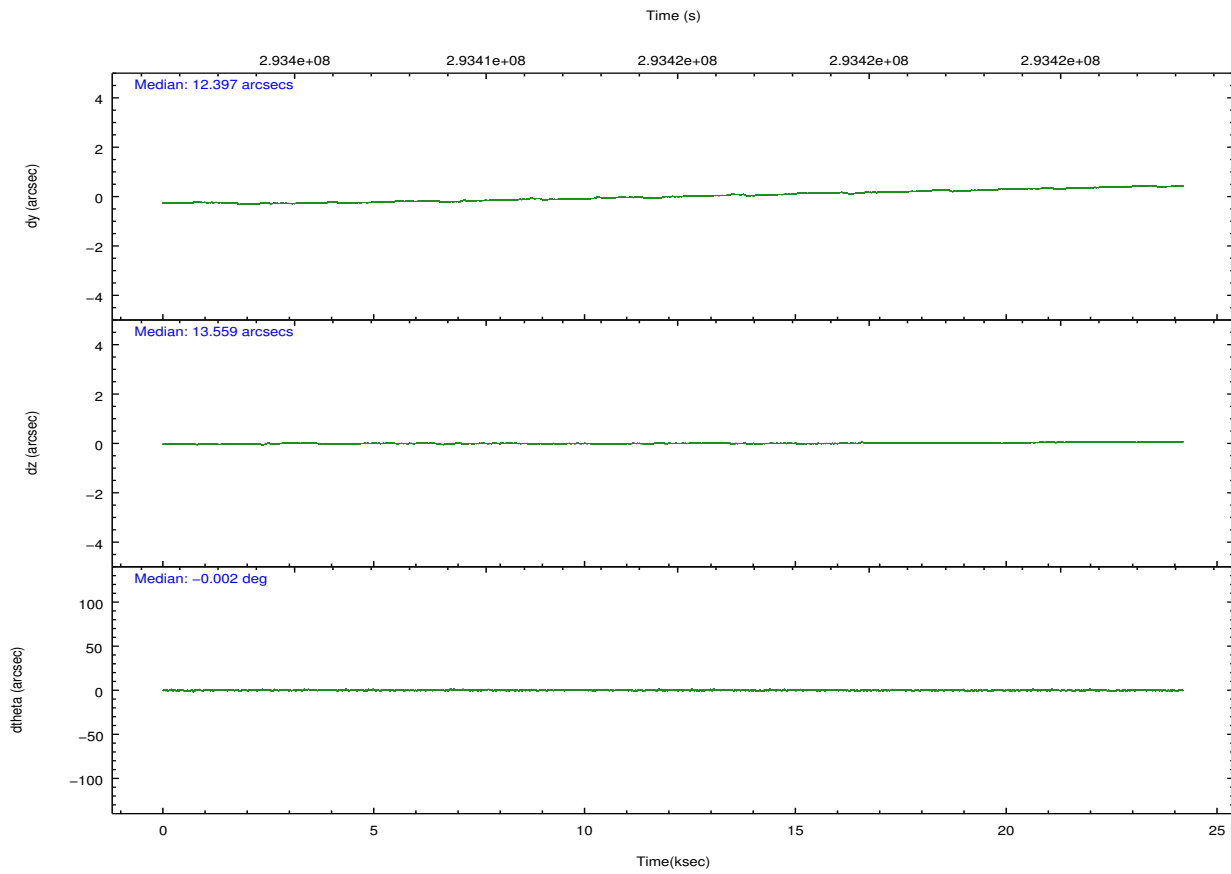
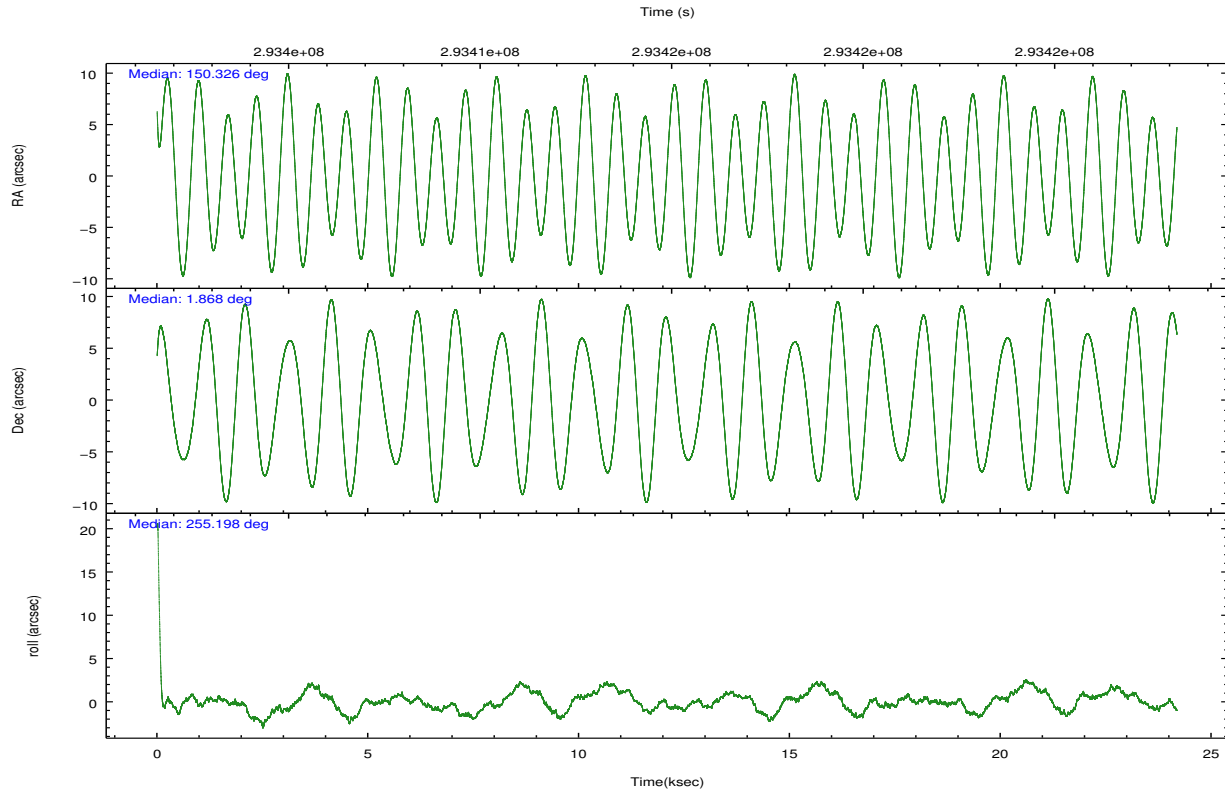
	ccd 0	ccd 1	ccd 2	ccd 3	ccd 6	ccd 7		ccd 0	ccd 1	ccd 2	ccd 3	ccd 6	ccd 7
level 1 events	189623	186259	214568	200170	216217	221348	grade 0 events	7025	7915	6677	6447	6891	9349
rejected events	170587	164960	196187	182334	196256	123669		3%	4%	3%	3%	3%	4%
rejected %	89%	88%	91%	91%	90%	55%	grade 1 events	97	130	115	120	95	271
								0%	0%	0%	0%	0%	0%
							grade 2 events	4624	4899	4533	4042	4719	20527
								2%	2%	2%	2%	2%	9%
							grade 3 events	2236	2373	2005	2074	2229	9042
								1%	1%	0%	1%	1%	4%
							grade 4 events	2012	2372	2062	2135	2197	9037
								1%	1%	0%	1%	1%	4%
							grade 5 events	6708	7510	6364	7777	8216	23657
								3%	4%	2%	3%	3%	10%
							grade 6 events	3686	4370	3603	3694	4518	52553
								1%	2%	1%	1%	2%	23%
							grade 7 events	163235	156690	189209	173881	187352	96912
								86%	84%	88%	86%	86%	43%

2.2 Compared Parameters

Parameter	Planned	Actual	Parameter	Planned	Actual
Instrument	ACIS	ACIS	Obspar format version number	7	7
Detector	ACIS-012367	ACIS-012367	Obspar file type	PREDICTED	ACTUAL
Grating	NONE	NONE	Obspar update status	NONE	UPDATED
Data mode	VFAINT	VFAINT	CCD I0 on	Y	Y
Observation mode	POINTING	POINTING	CCD I1 on	Y	Y
[deg] Pointing RA	150.319058	150.3263957818852	CCD I2 on	Y	Y
[deg] Pointing Dec	1.894078	1.867588706484363	CCD I3 on	Y	Y
[deg] Pointing Roll	255.000227	255.2086891706329	CCD S0 on	N	N
[mm] SIM focus pos	-0.782348	-0.7809083437167272	CCD S1 on	N	N
[mm] SIM defocus	0	0.001439871863259334	CCD S2 on	O1	Y
[mm] SIM translation stage pos	-233.592463	-233.5874344608287	CCD S3 on	O2	Y
[mm] SIM translation stage offset	0	-0.005018542100998502	CCD S4 on	N	N
[s] Observation start time (MET)	293402975.184000	293401553.06449	CCD S5 on	N	N
Observation start date	2007-04-19T20:48:30	2007-04-19T20:25:53	Number of optional ACIS chips dropped	0	0
[s] Observation end time (MET)	293426975.184000	293428043.67826	On-chip summing requested	N	N
Observation end date	2007-04-20T03:28:30	2007-04-20T03:47:23	Subarray requested	NONE	NONE
Read mode	TIMED	TIMED	Alternating exposures requested	N	N
			[s] Primary exposure time	0.000000	3.2

2.3 Aspect



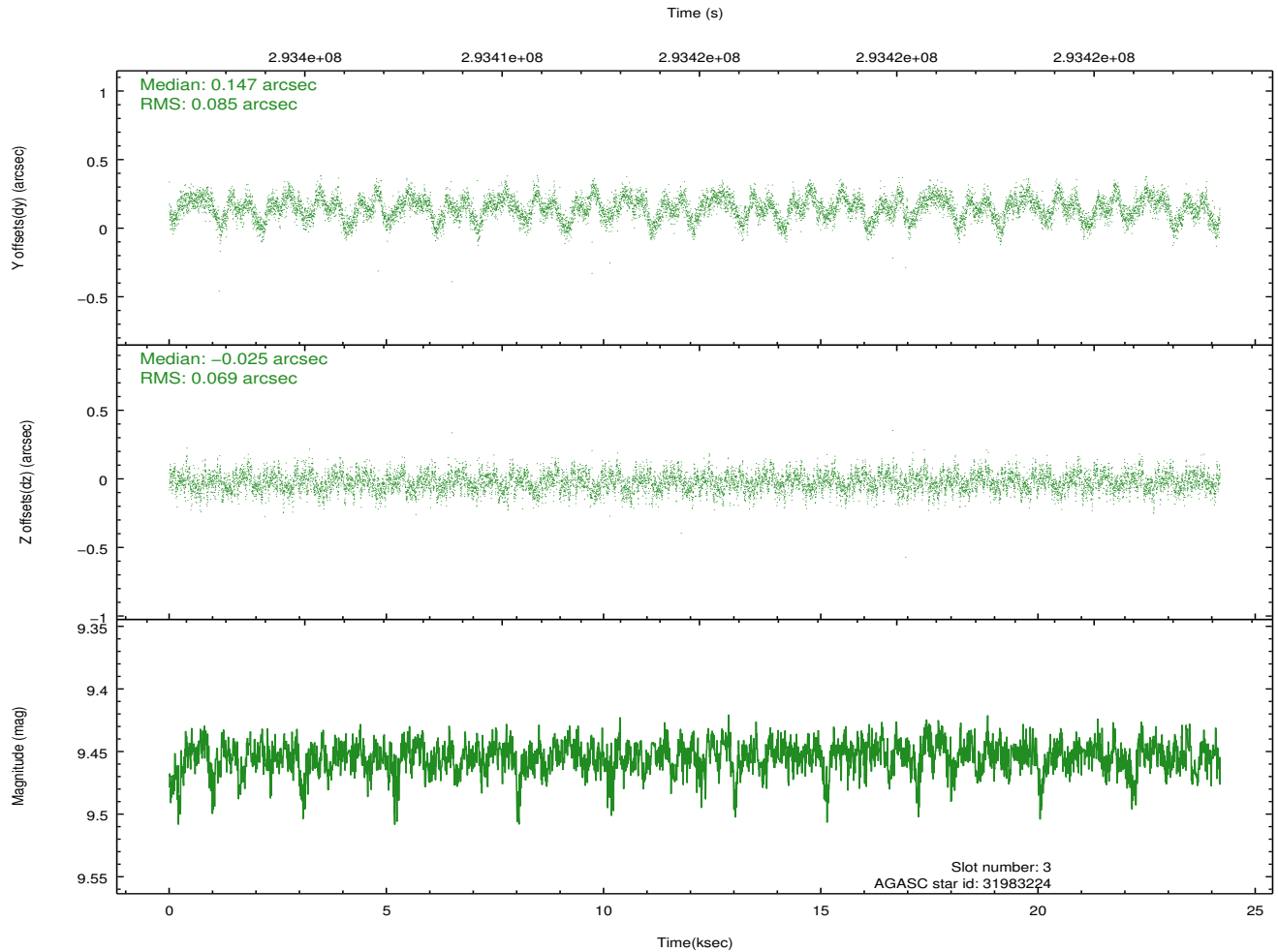
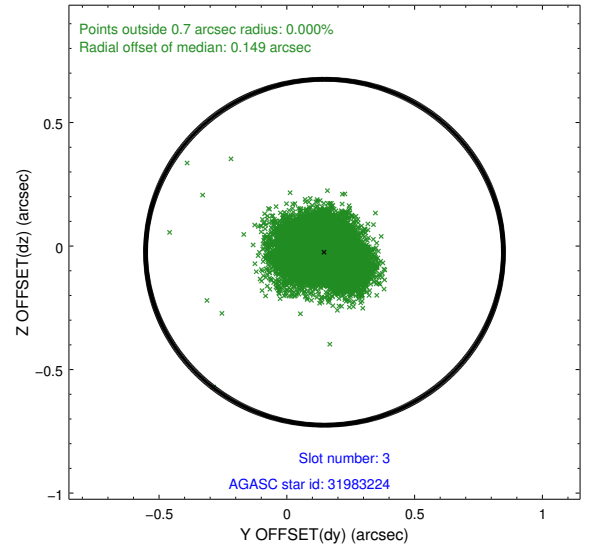
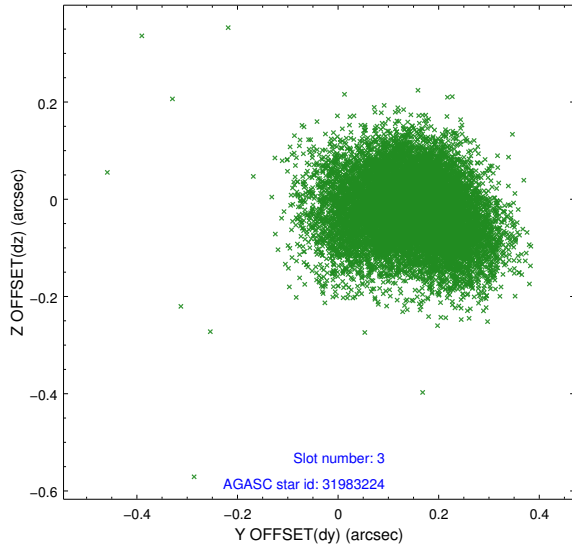


Slot Statistics

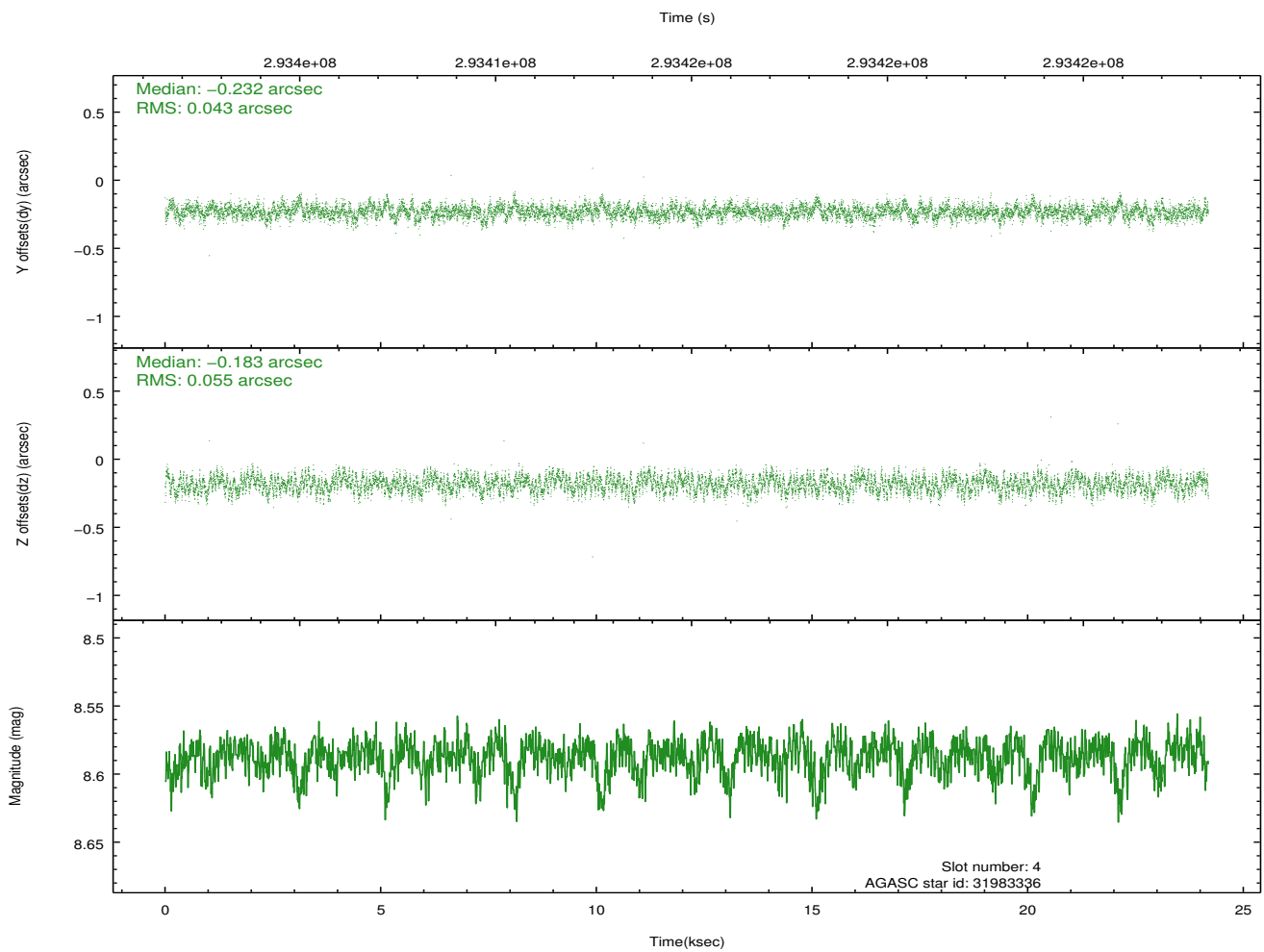
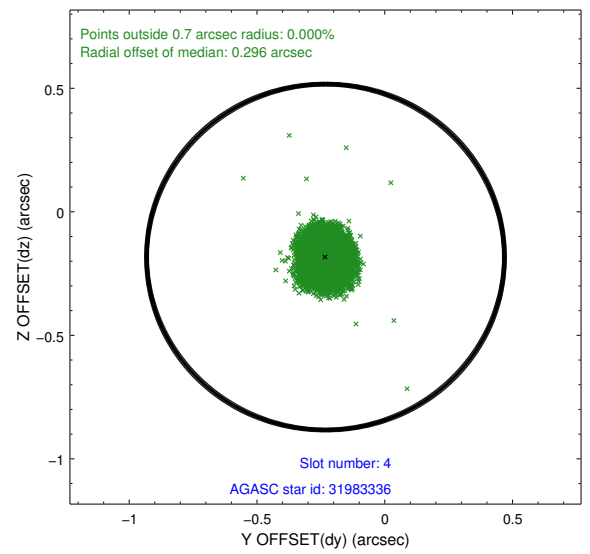
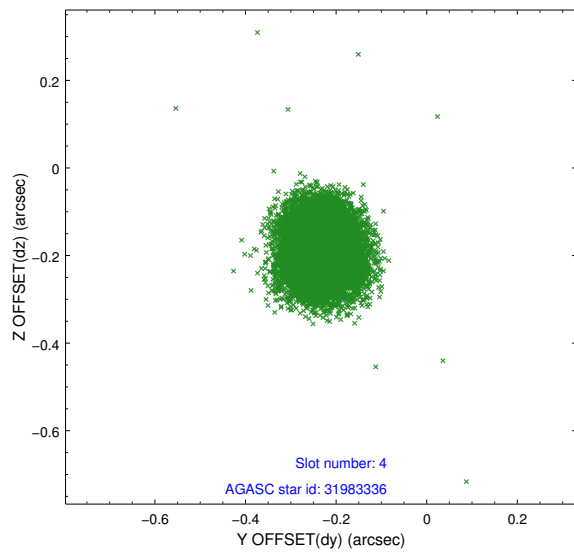
slot	status	id	mag	n_pts	med_dy	med_dz	dr1	dr2	ra	dec	mean_y	mean_z
0	FID	ACIS-I-1	7.23	5899	0.032	0.014	0.007	0.013	0.000000	0.000000	927.15	-837.11
1	FID	ACIS-I-5	7.23	5898	-0.201	0.044	0.008	0.014	0.000000	0.000000	-1821.13	1060.34
2	FID	ACIS-I-6	7.24	5898	0.078	0.013	0.007	0.012	0.000000	0.000000	392.59	1704.96
3	GUIDE	31983224	9.45	11780	0.147	-0.025	0.116	0.187	150.543757	1.869948	-125.20	803.61
4	GUIDE	31983336	8.59	11793	-0.232	-0.183	0.075	0.119	150.429924	2.291234	-1484.32	15.02
5	GUIDE	31985760	8.46	11792	-0.069	0.081	0.070	0.111	150.924581	2.094394	-1260.93	1917.47
6	GUIDE	31986152	9.00	11791	0.113	0.234	0.100	0.156	150.840314	2.057585	-1054.19	1659.14
7	GUIDE	31075368	9.14	11787	0.046	-0.116	0.111	0.182	149.743370	2.396723	-1210.88	-2469.25

2.4 Star Slots

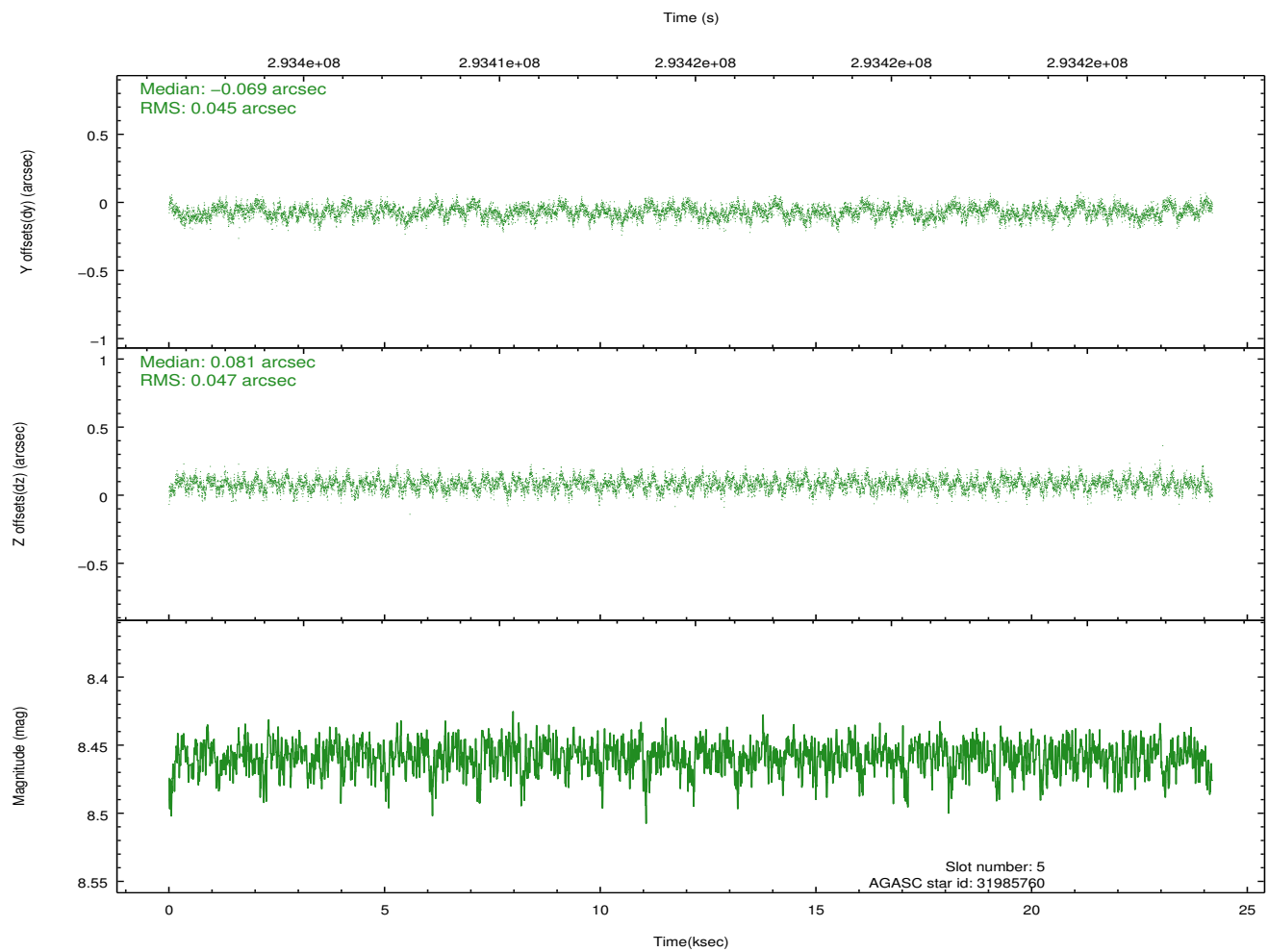
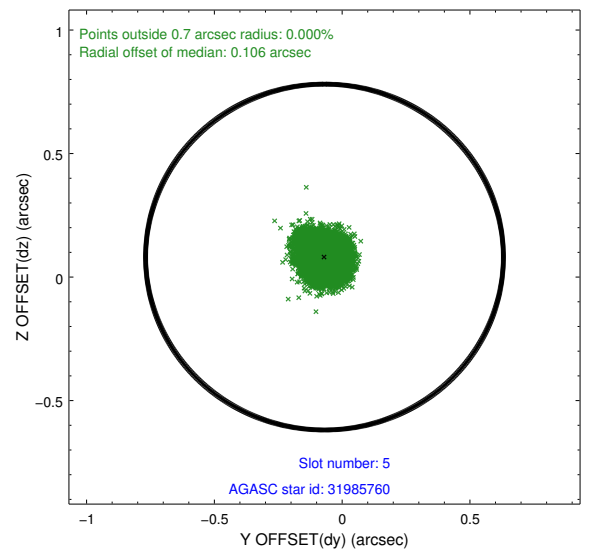
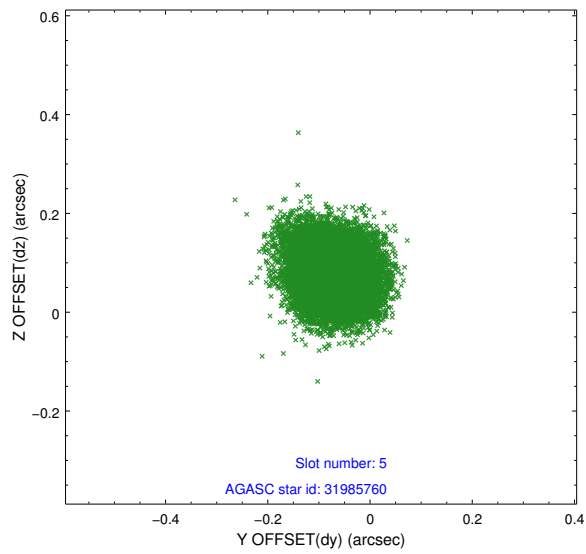
2.4.1 Slot 3



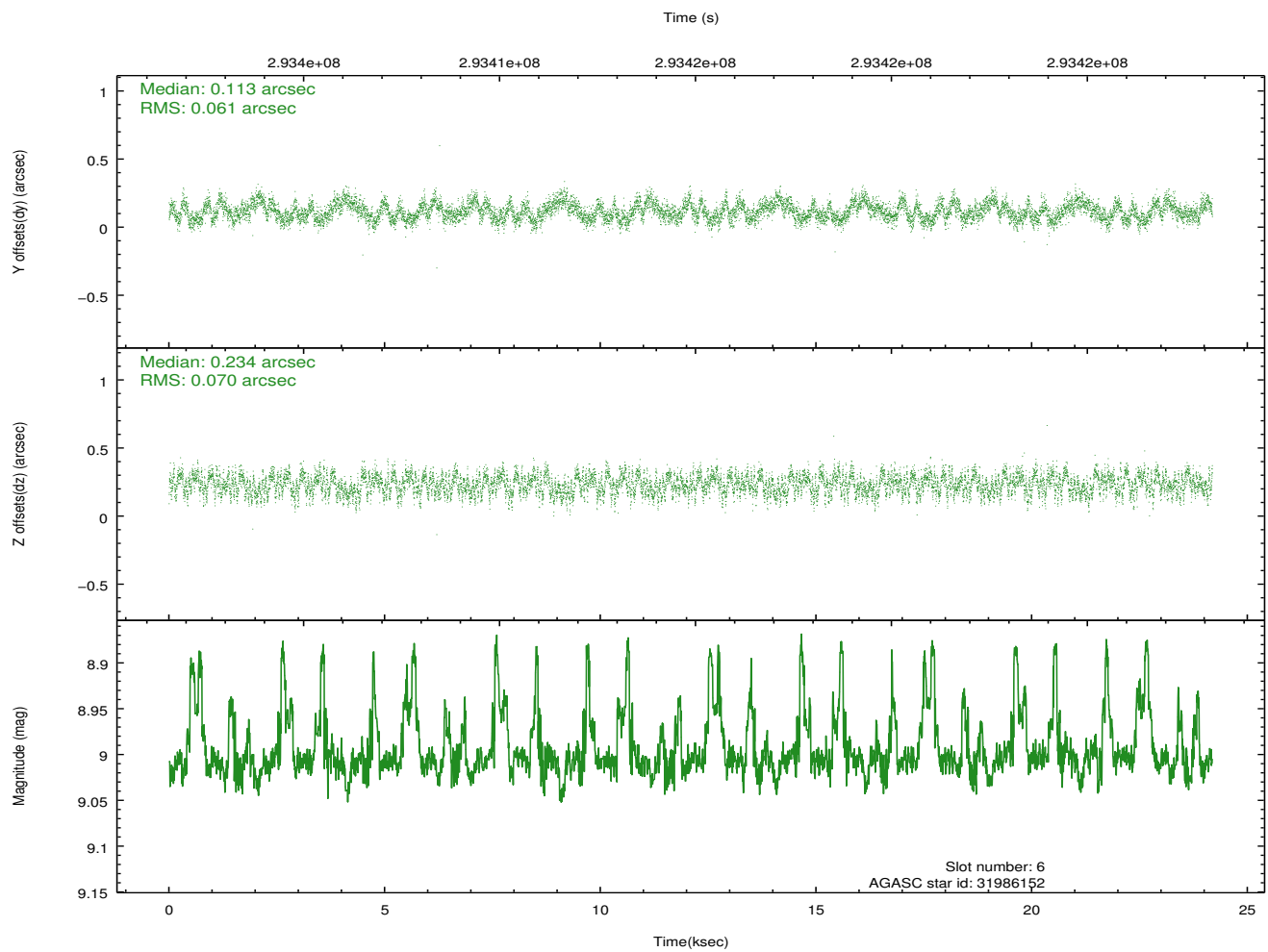
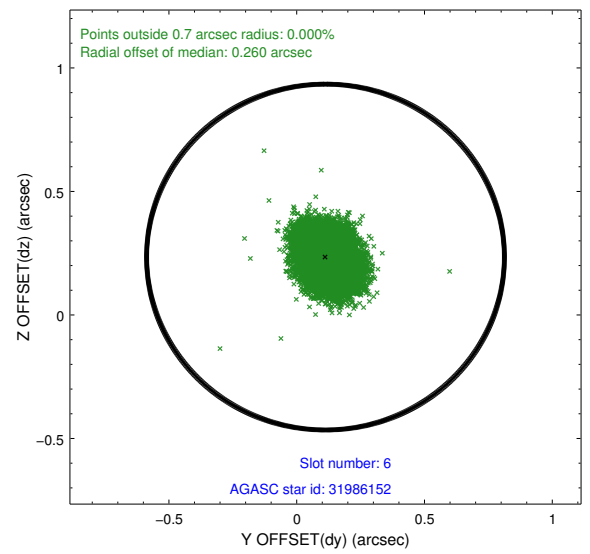
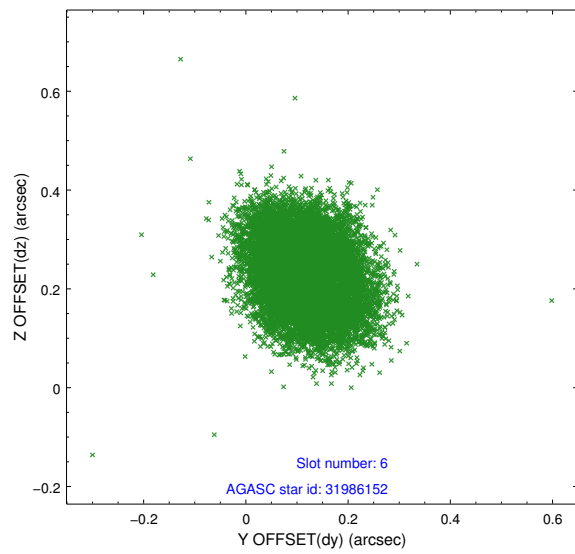
2.4.2 Slot 4



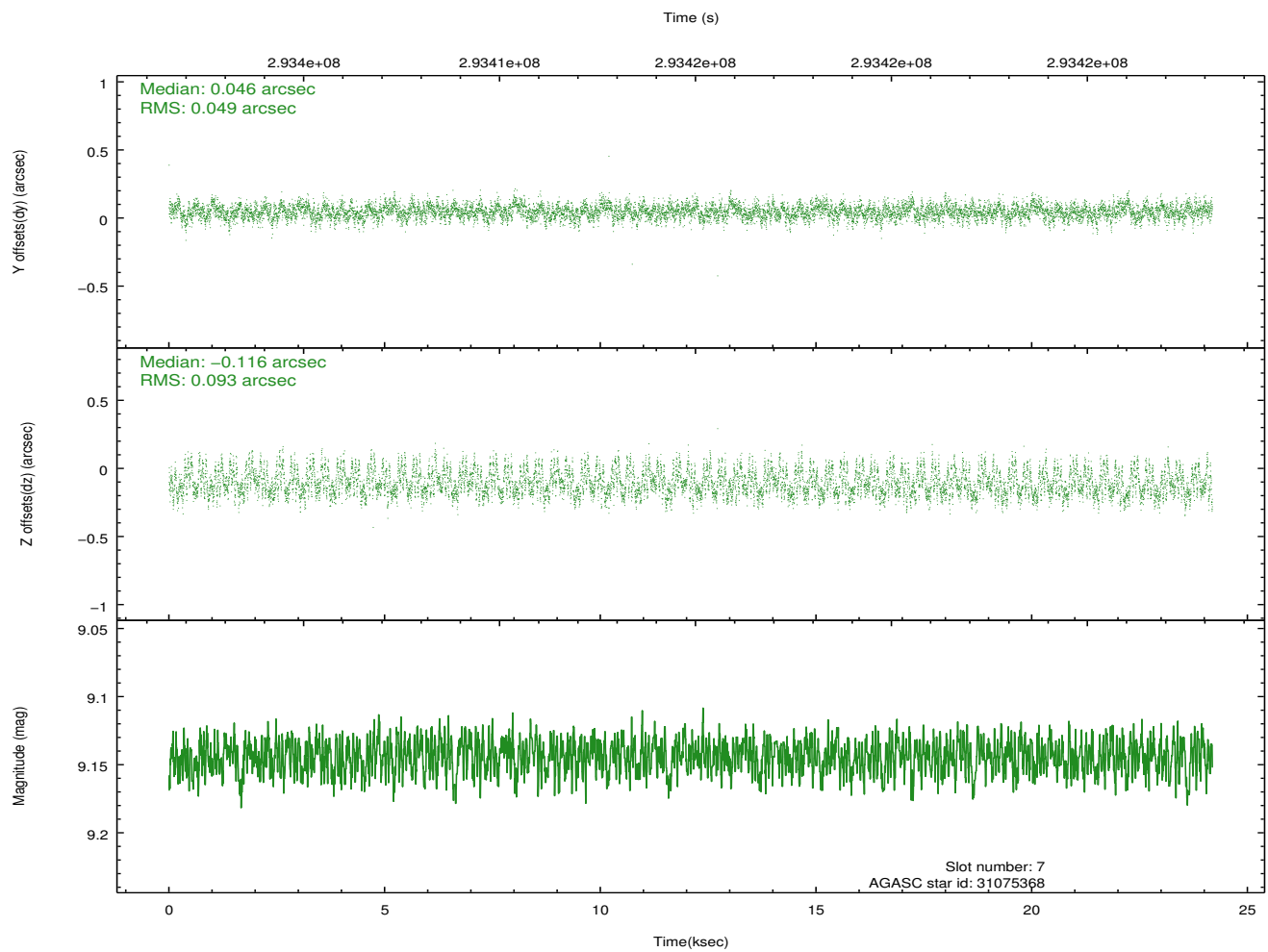
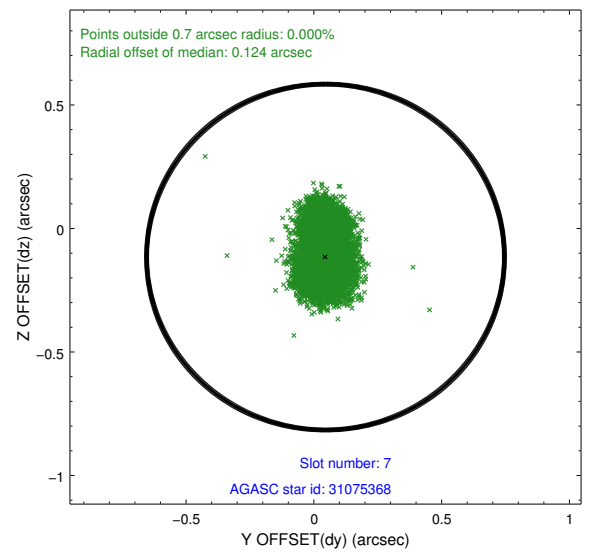
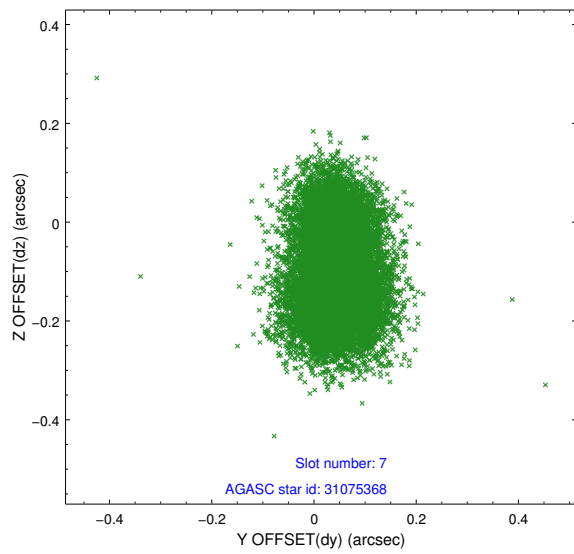
2.4.3 Slot 5



2.4.4 Slot 6

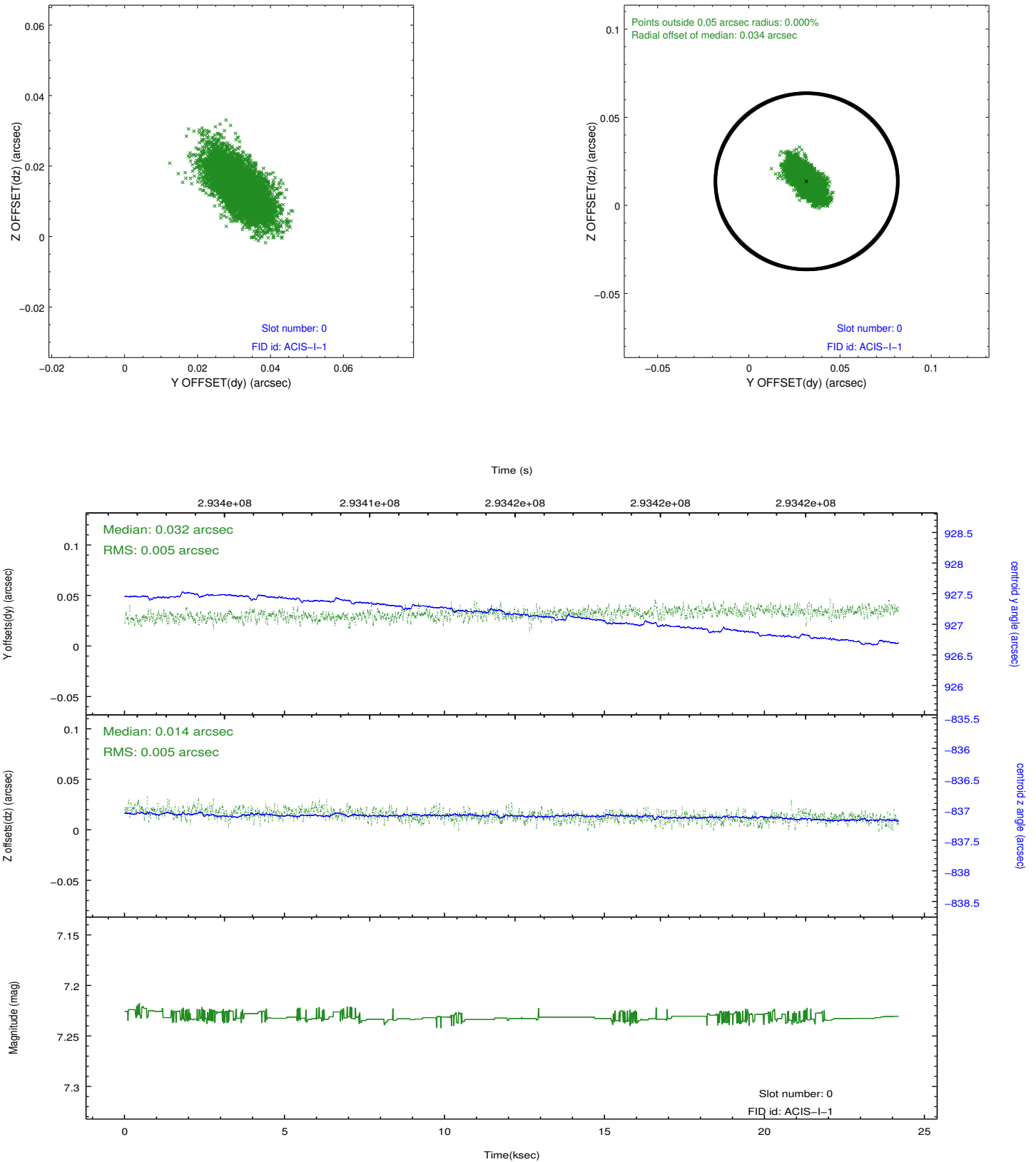


2.4.5 Slot 7

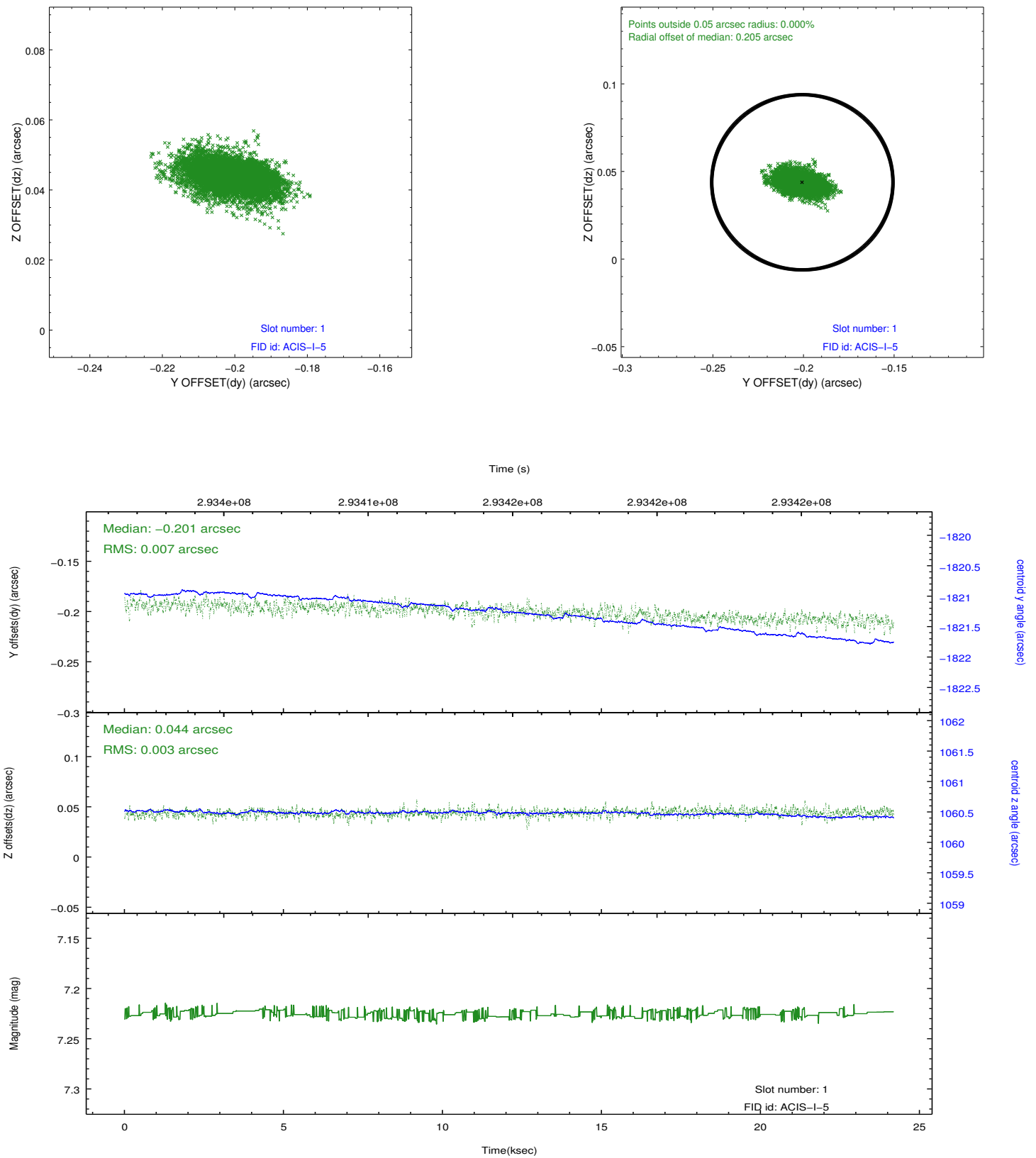


2.5 FID Slots

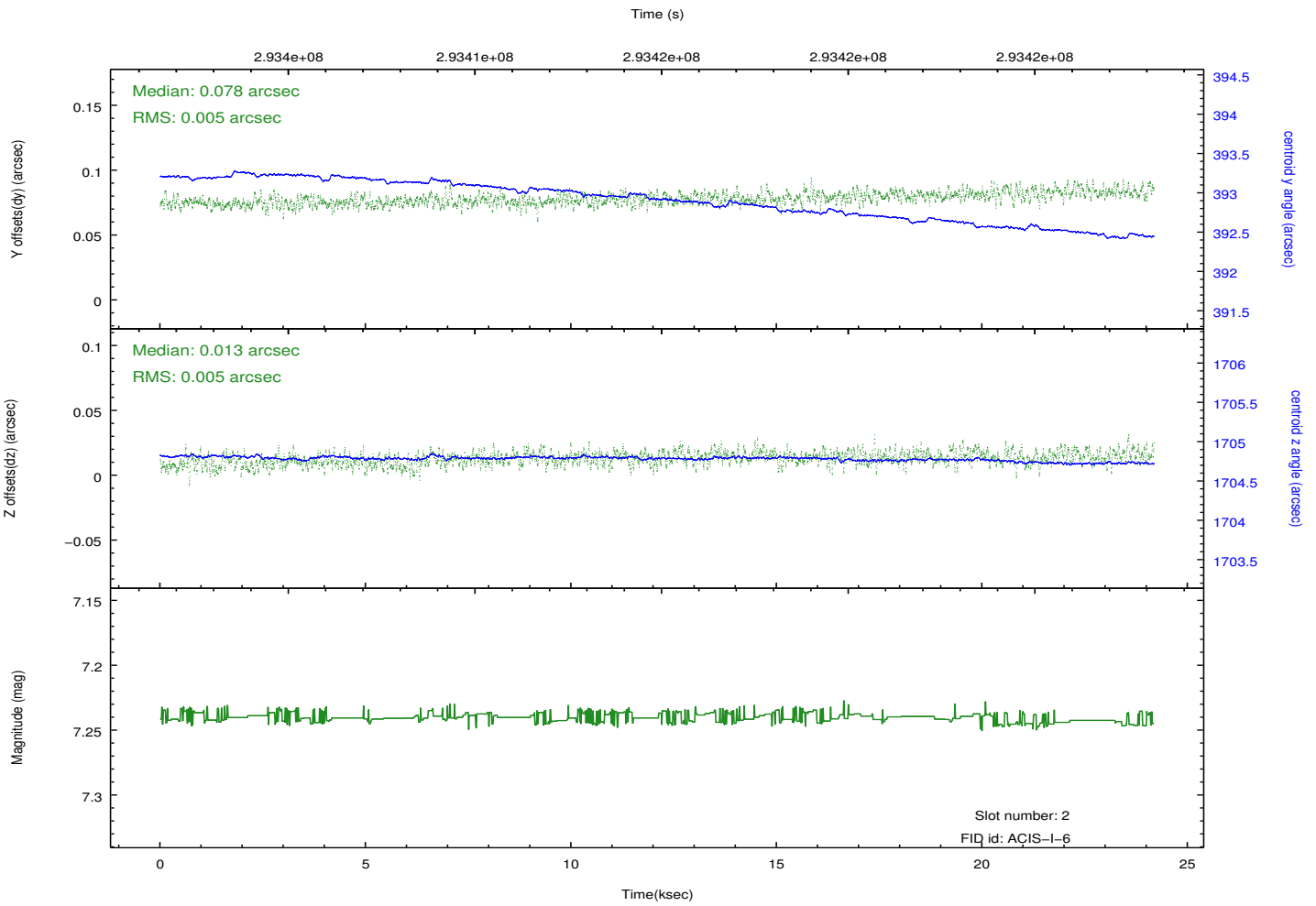
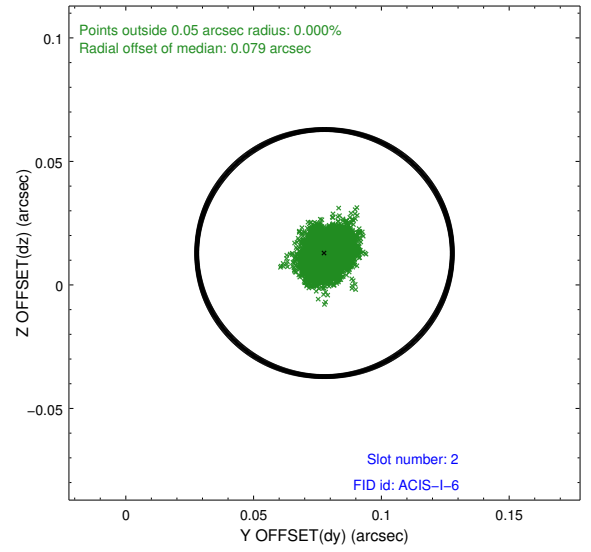
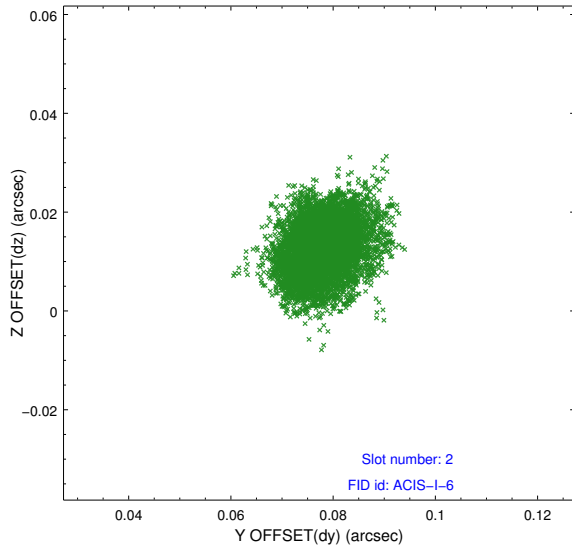
2.5.1 Slot 0



2.5.2 Slot 1



2.5.3 Slot 2



A Summary

A.1 Status

V&V Scientist	Jen Lauer
V&V Date (YYYY-MM-DD)	2012.04.24
V&V Edition	1
V&V Disposition and Status	OK
V&V Charge Time	24.1791999

A.2 Comments

Roll preference met.