

# V&V Reference Report

## L2 ASCDS Version : 8.4.4

Observation 8216 - L2 Version 3  
Chandra X-Ray Center

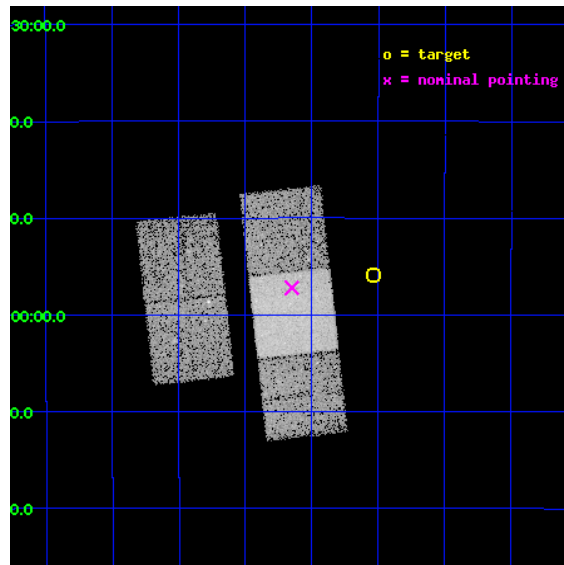
L2 Processing Date : Apr 20 2012

## Contents

<b>1</b>	<b>Front</b>	<b>2</b>
<b>2</b>	<b>OBI</b>	<b>3</b>
2.1	OBI . . . . .	3
2.1.1	Images . . . . .	3
2.1.2	Bias . . . . .	3
2.1.3	Parameters . . . . .	4
2.1.4	Events . . . . .	4
2.2	Compared Parameters . . . . .	5
2.3	Aspect . . . . .	6
2.4	Star Slots . . . . .	9
2.4.1	Slot 3 . . . . .	9
2.4.2	Slot 4 . . . . .	10
2.4.3	Slot 5 . . . . .	11
2.4.4	Slot 6 . . . . .	12
2.4.5	Slot 7 . . . . .	13
2.5	FID Slots . . . . .	14
2.5.1	Slot 0 . . . . .	14
2.5.2	Slot 1 . . . . .	15
2.5.3	Slot 2 . . . . .	16
<b>A</b>	<b>Summary</b>	<b>17</b>
A.1	Status . . . . .	17
A.2	Comments . . . . .	17

# 1 Front

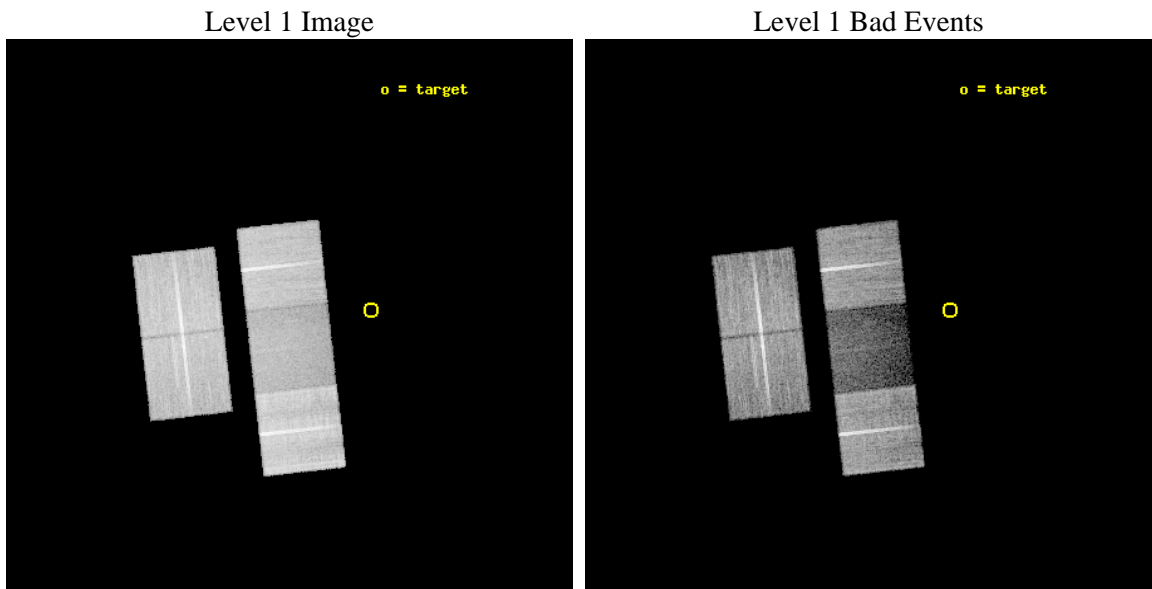
seq_num	100068	Sequence number
obs_id	8216	Observation id
title	X-Ray Observations of Jupiter in Support of the New Horizons Flyby	&#160
observer	Dr. G. Gladstone	Principal investigator
object	Jupiter	Source name
dtcycle	0	&#160
cycle	P	events from which exps? Prim/Second/Both
ra_targ	254.133375	Observer's specified target RA [deg]
dec_targ	-21.932222	Observer's specified target Dec [deg]
ra_nom	254.28730363061	Nominal RA [deg]
dec_nom	-21.953677057997	Nominal Dec [deg]
roll_nom	83.62942606656	Nominal Roll [deg]
revision	3	Processing version of data
ontime	18528.700142503	Sum of GTIs [s]
liveltime	18286.60903451	Livetime [s]
ontime2	18525.559182227	Sum of GTIs [s]
ontime3	18519.277211666	Sum of GTIs [s]
ontime6	18528.700142503	Sum of GTIs [s]
ontime7	18528.700142503	Sum of GTIs [s]
ontime8	18516.136191666	Sum of GTIs [s]
l2events	75236	Number of level 2 events



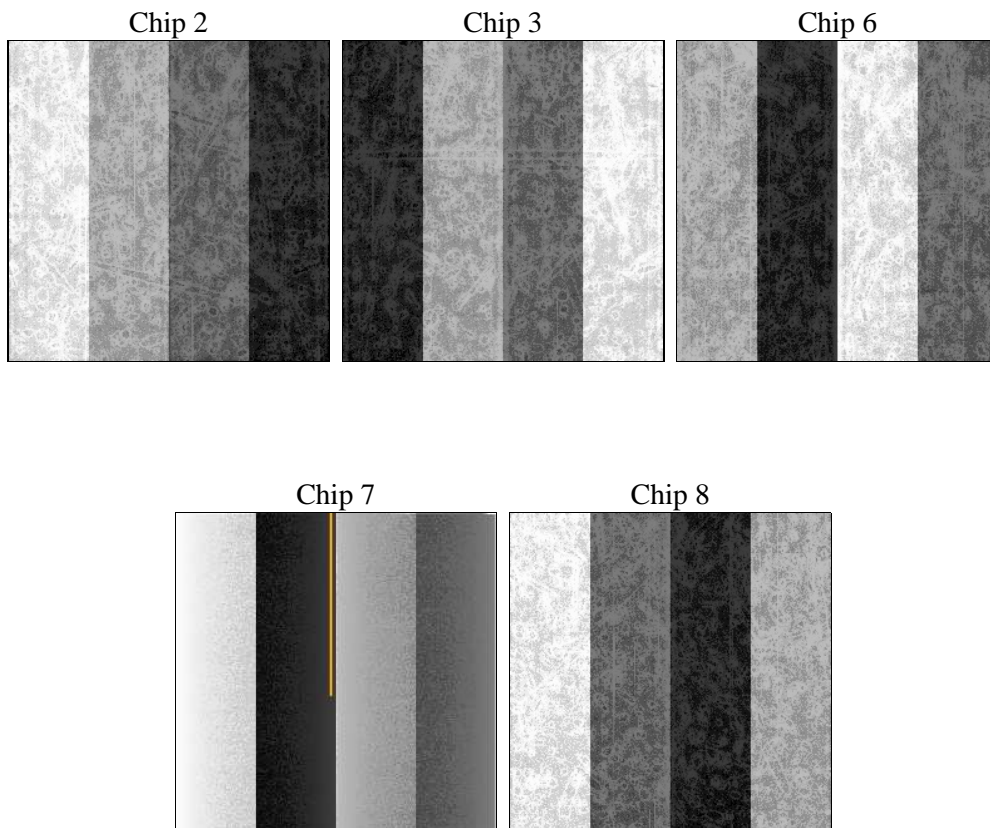
## 2 OBI

### 2.1 OBI

#### 2.1.1 Images



#### 2.1.2 Bias



### 2.1.3 Parameters

obi_num	1	Obi number	sched_exp_time	18758.000000	[s] Scheduled observation exposure time
ascdsver	8.4.4	Processing system revision	ontime	18528.700142503	Sum of GTIs [s]
caldbver	4.4.9	&#160	ontime2	18525.559182227	Sum of GTIs [s]
date	2012-04-20T03:28:53	Date and time of file creation	ontime3	18519.277211666	Sum of GTIs [s]
revision	3	Processing version of data	ontime6	18528.700142503	Sum of GTIs [s]
			ontime7	18528.700142503	Sum of GTIs [s]
			ontime8	18516.136191666	Sum of GTIs [s]
			l1events	598061	Number of level 1 events

### 2.1.4 Events

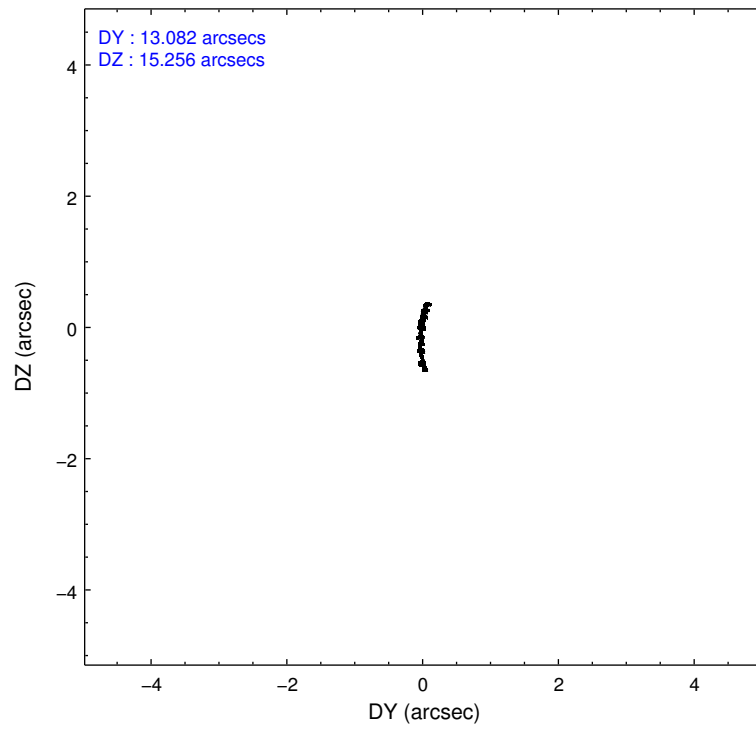
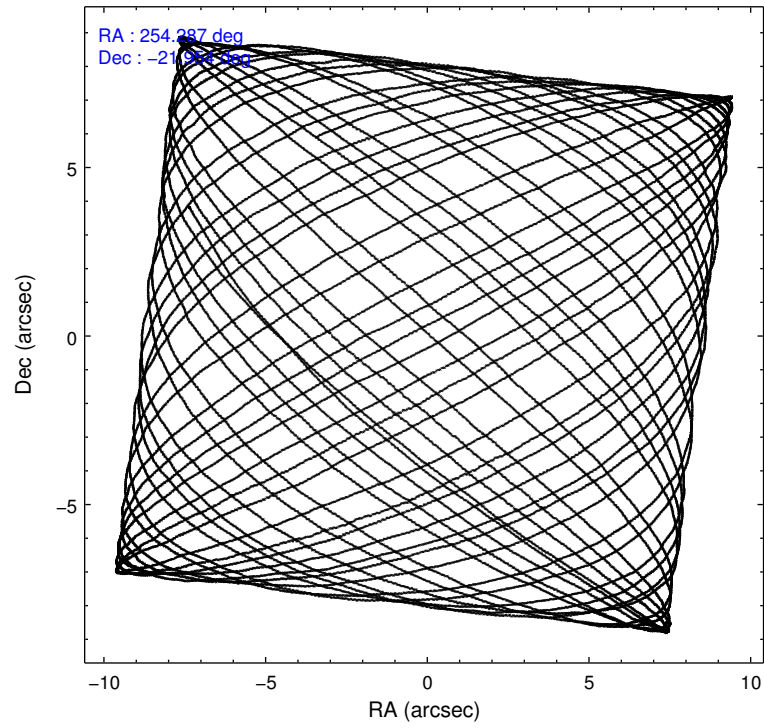
	ccd 2	ccd 3	ccd 6	ccd 7	ccd 8
level 1 events	130861	117440	123051	70559	156150
rejected events	120096	107162	111672	31582	115385
rejected %	91%	91%	90%	44%	73%

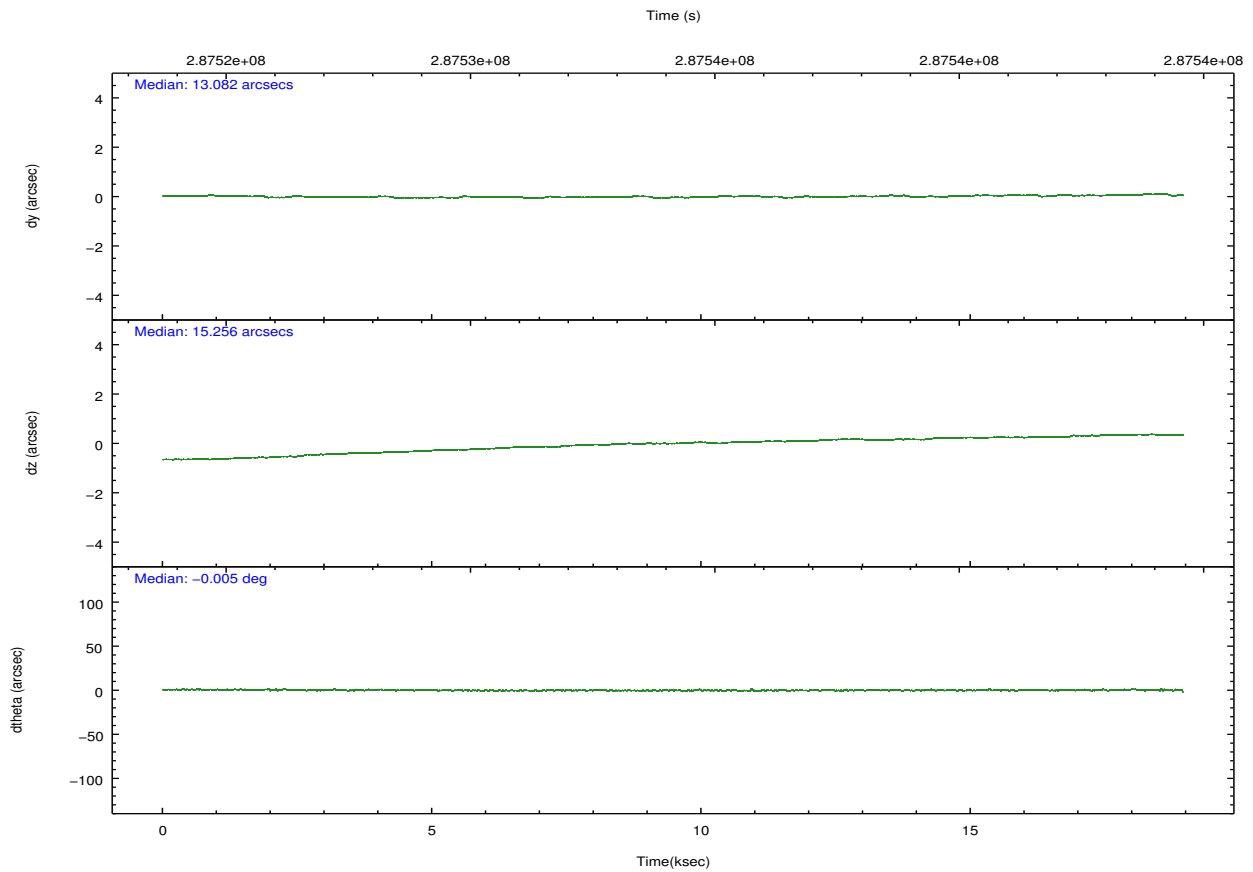
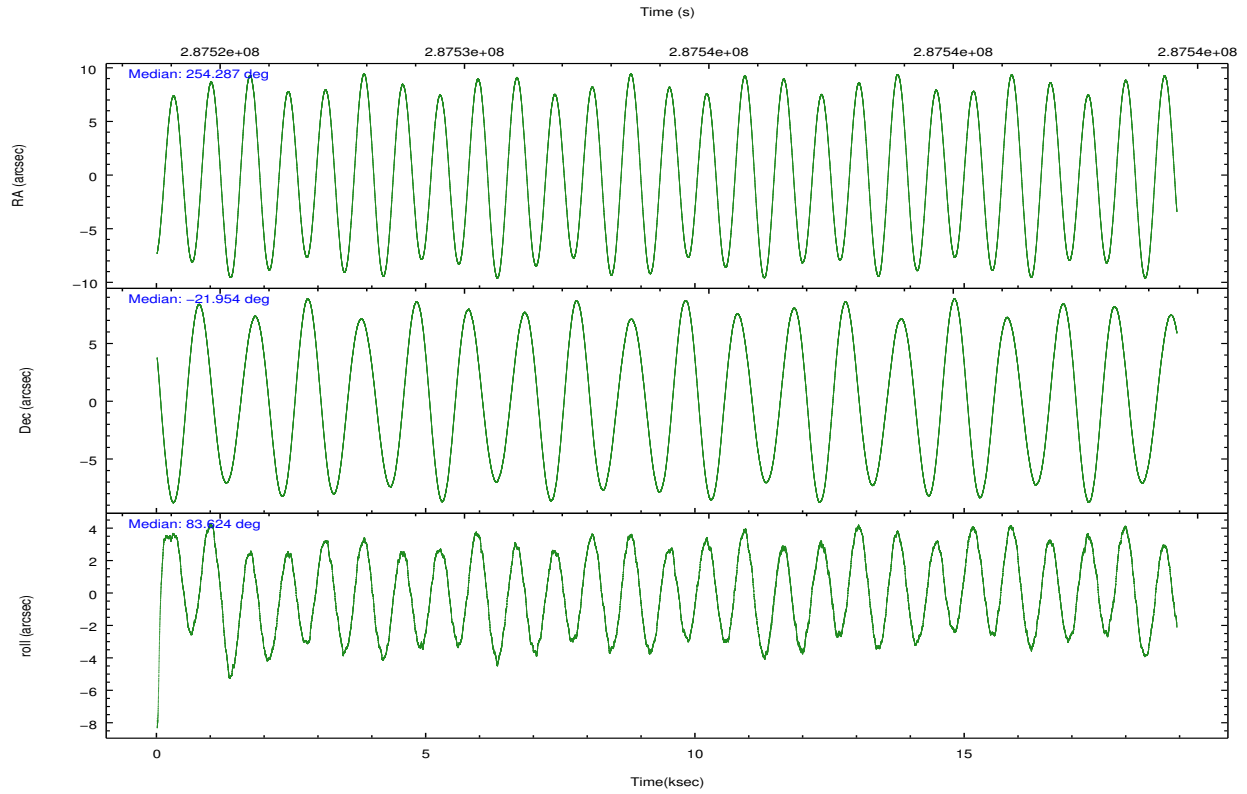
	ccd 2	ccd 3	ccd 6	ccd 7	ccd 8
grade 0 events	4536	4462	4741	4626	11713
	3%	3%	3%	6%	7%
grade 1 events	77	66	64	122	133
	0%	0%	0%	0%	0%
grade 2 events	2497	2047	2417	9293	9364
	1%	1%	1%	13%	5%
grade 3 events	1102	1205	1288	3550	4676
	0%	1%	1%	5%	2%
grade 4 events	1151	1103	1206	3582	4192
	0%	0%	0%	5%	2%
grade 5 events	1867	2377	2503	7180	4339
	1%	2%	2%	10%	2%
grade 6 events	1481	1466	1733	17937	10847
	1%	1%	1%	25%	6%
grade 7 events	118150	104714	109099	24269	110886
	90%	89%	88%	34%	71%

## 2.2 Compared Parameters

Parameter	Planned	Actual	Parameter	Planned	Actual
Instrument	ACIS	ACIS	Obspar format version number	7	7
Detector	ACIS-23678	ACIS-23678	Obspar file type	PREDICTED	ACTUAL
Grating	NONE	NONE	Obspar update status	NONE	UPDATED
Data mode	VFAINT	VFAINT	Number of optional ACIS chips dropped	0	0
Observation mode	POINTING	POINTING	On-chip summing requested	N	N
[deg] Pointing RA	254.299471	254.2873036306084	Subarray requested	NONE	NONE
[deg] Pointing Dec	-21.978565	-21.95367705799723	Alternating exposures requested	N	N
[deg] Pointing Roll	83.477352	83.62942606656019	[s] Primary exposure time	0.000000	3.1
[s] Window start time (MET)	287310665.184000	287310665.184000			
[s] Window stop time (MET)	287542865.184000	287542865.184000			
[mm] SIM focus pos	-0.684267	-0.6828225247311905			
[mm] SIM defocus	0	0.001444936568705701			
[mm] SIM translation stage pos	-190.132523	-190.1400660498719			
[mm] SIM translation stage offset	0	0.00754346686406393			
[s] Observation start time (MET)	287524865.184000	287524466.20984			
Observation start date	2007-02-10T20:00:00	2007-02-10T19:54:26			
[s] Observation end time (MET)	287543623.184000	287544070.36077			
Observation end date	2007-02-11T01:12:38	2007-02-11T01:21:10			
Read mode	TIMED	TIMED			

## 2.3 Aspect



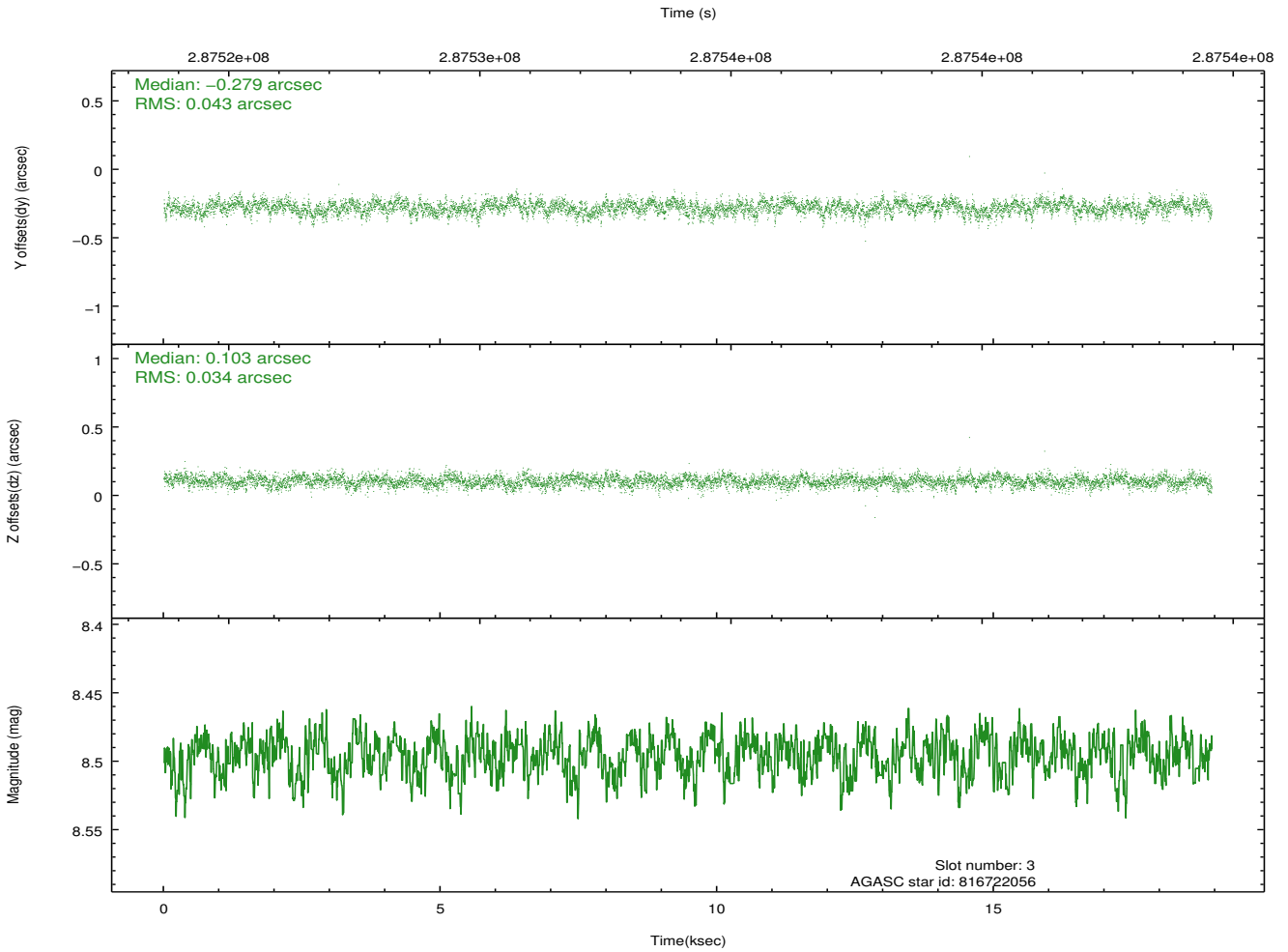
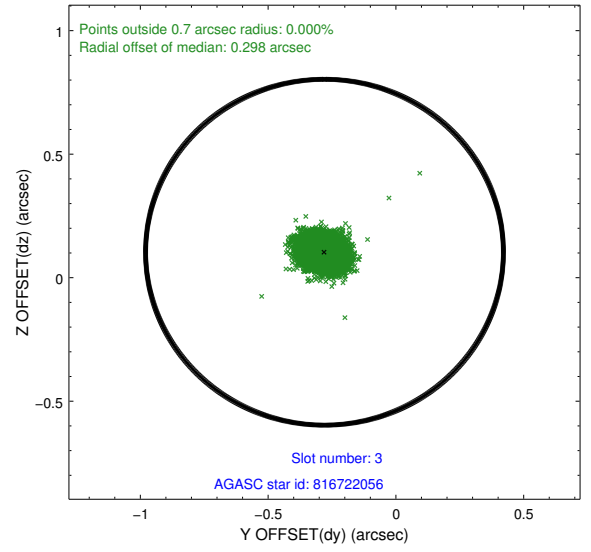
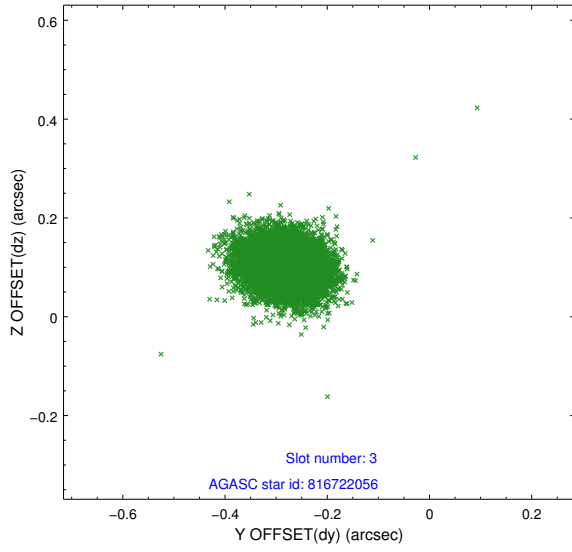


### Slot Statistics

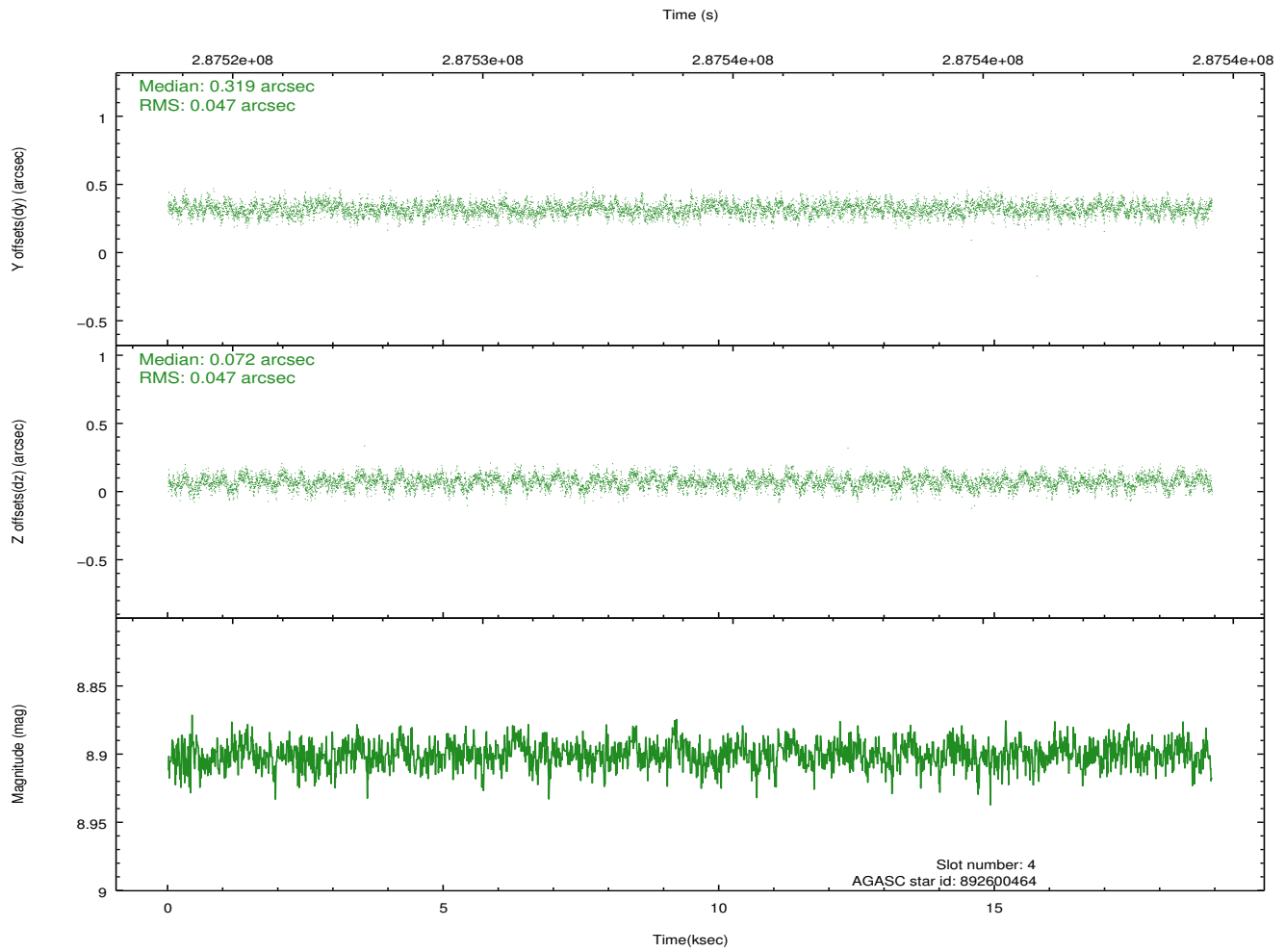
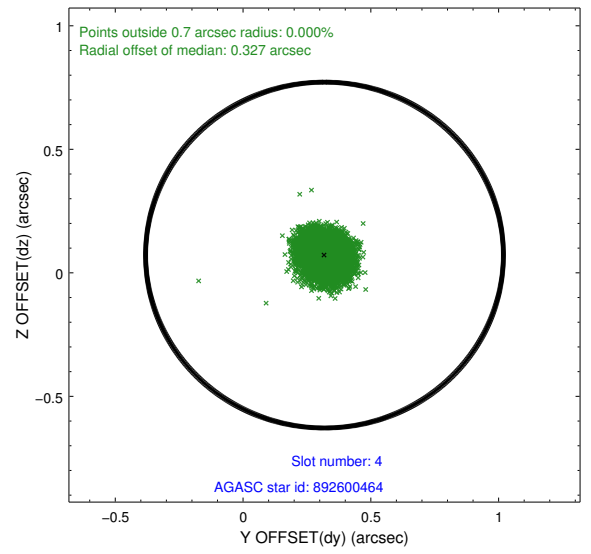
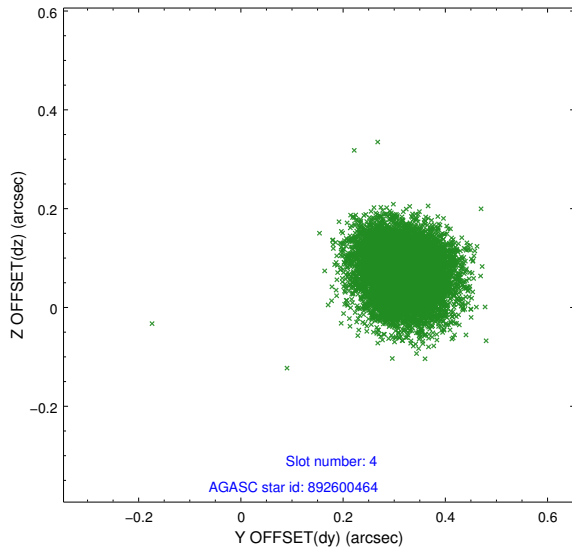
slot	status	id	mag	n_pts	med_dy	med_dz	dr1	dr2	ra	dec	mean_y	mean_z
0	FID	ACIS-S-2	7.09	4618	-0.050	-0.032	0.008	0.014	0.000000	0.000000	-766.02	-1736.62
1	FID	ACIS-S-4	7.20	4619	0.175	0.033	0.006	0.011	0.000000	0.000000	2147.35	171.76
2	FID	ACIS-S-5	7.23	4619	-0.156	0.008	0.008	0.013	0.000000	0.000000	-1818.74	165.58
3	GUIDE	816722056	8.50	9236	-0.279	0.103	0.058	0.095	254.820495	-21.499730	1908.12	-1537.99
4	GUIDE	892600464	8.90	9233	0.319	0.072	0.071	0.113	254.248920	-22.576721	-2157.74	-77.76
5	GUIDE	892603544	8.96	9232	0.300	0.177	0.073	0.118	254.823740	-22.668918	-2273.90	-2012.91
6	GUIDE	816589608	8.41	9235	-0.063	-0.434	0.081	0.127	253.659974	-21.879606	106.60	2162.05
7	GUIDE	816720016	8.28	9225	-0.275	0.083	0.048	0.078	254.491820	-21.386364	2191.00	-397.79

## 2.4 Star Slots

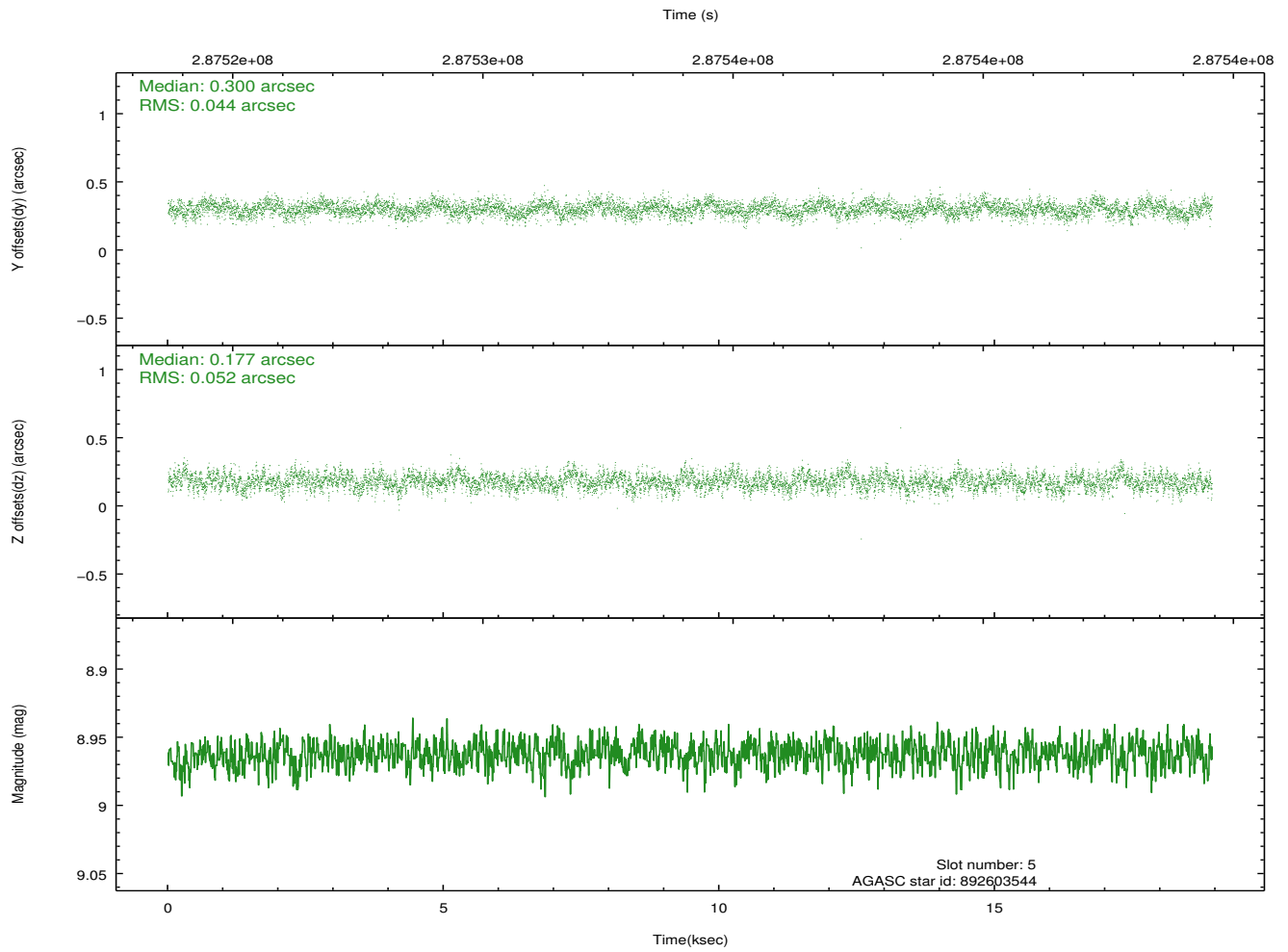
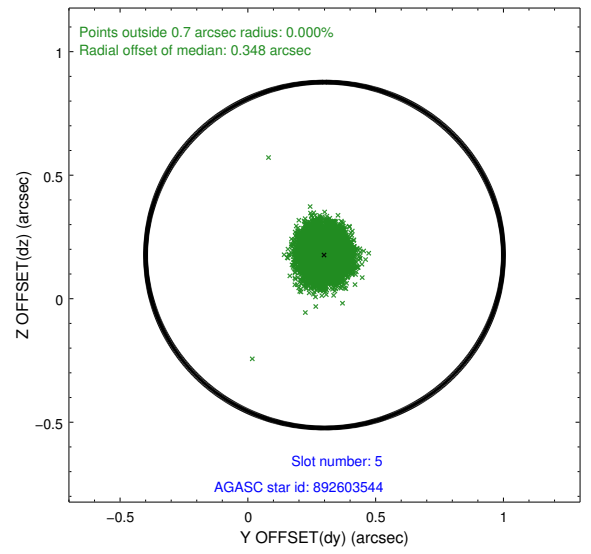
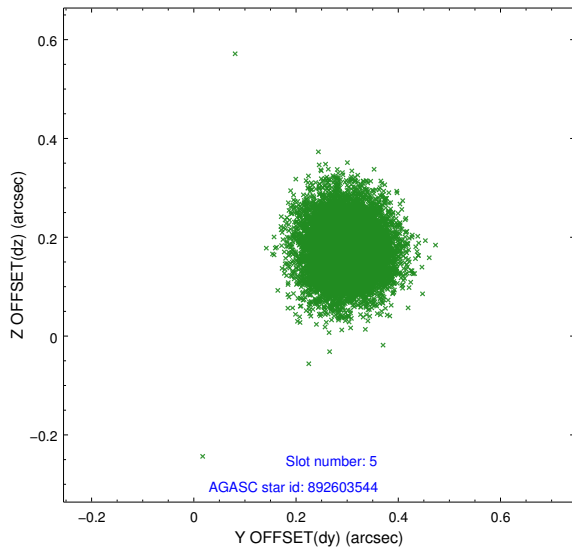
### 2.4.1 Slot 3



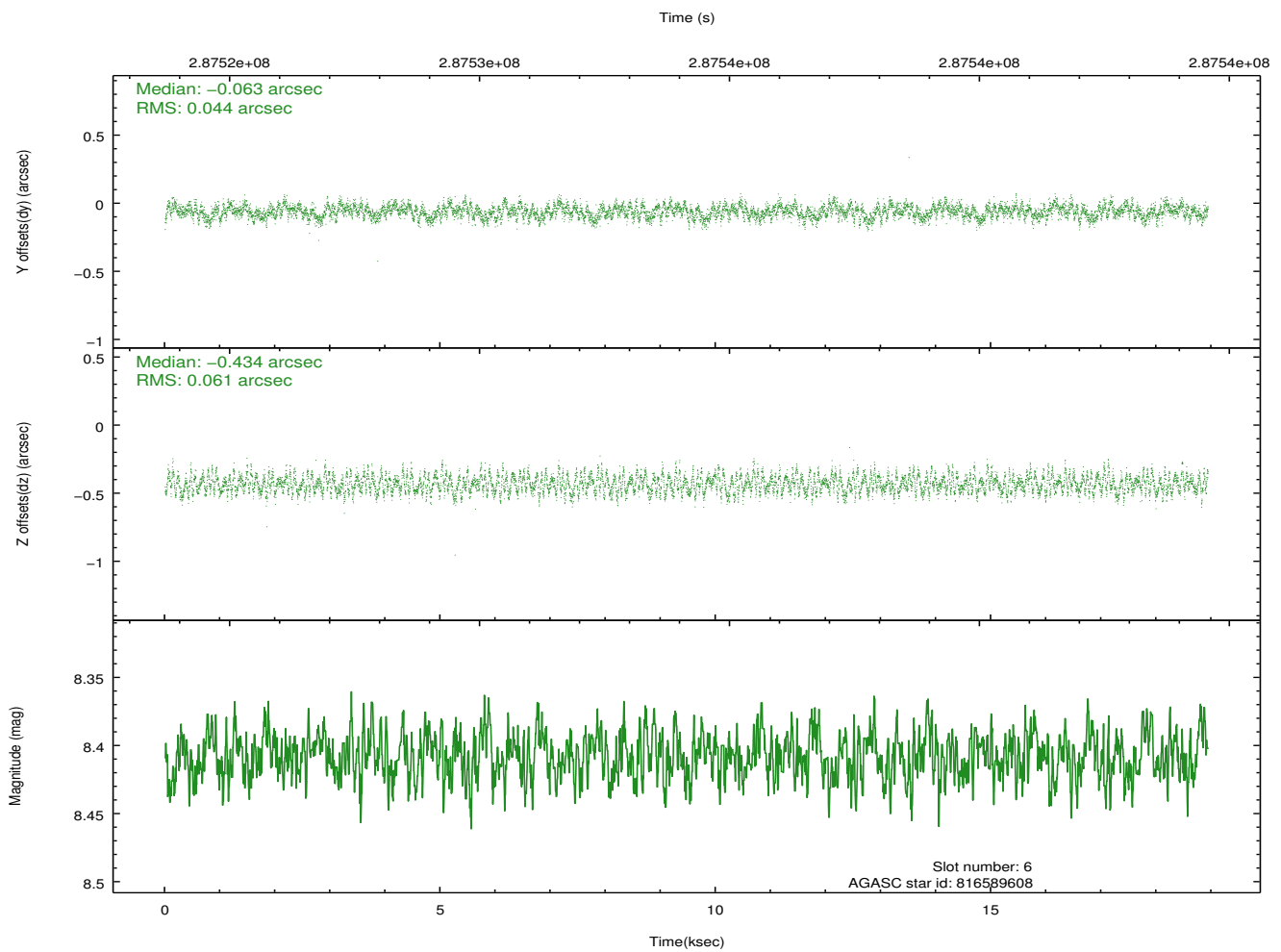
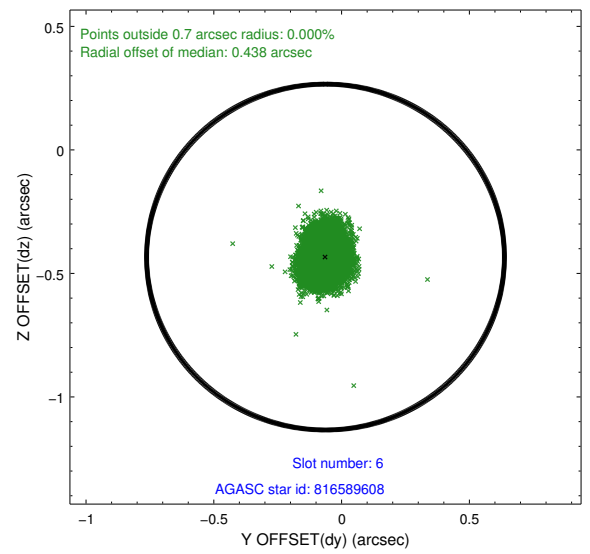
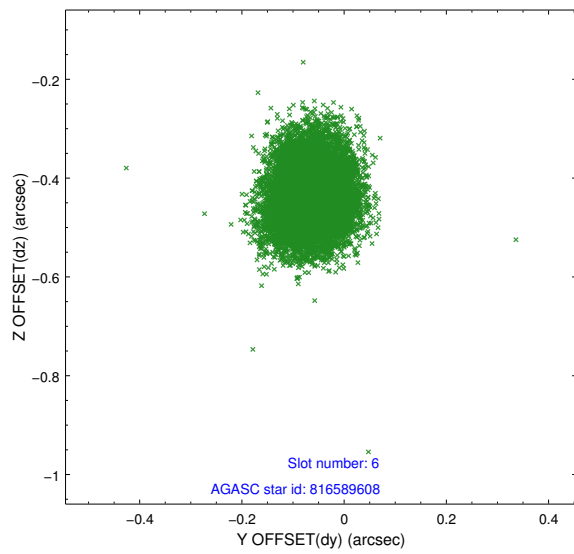
### 2.4.2 Slot 4



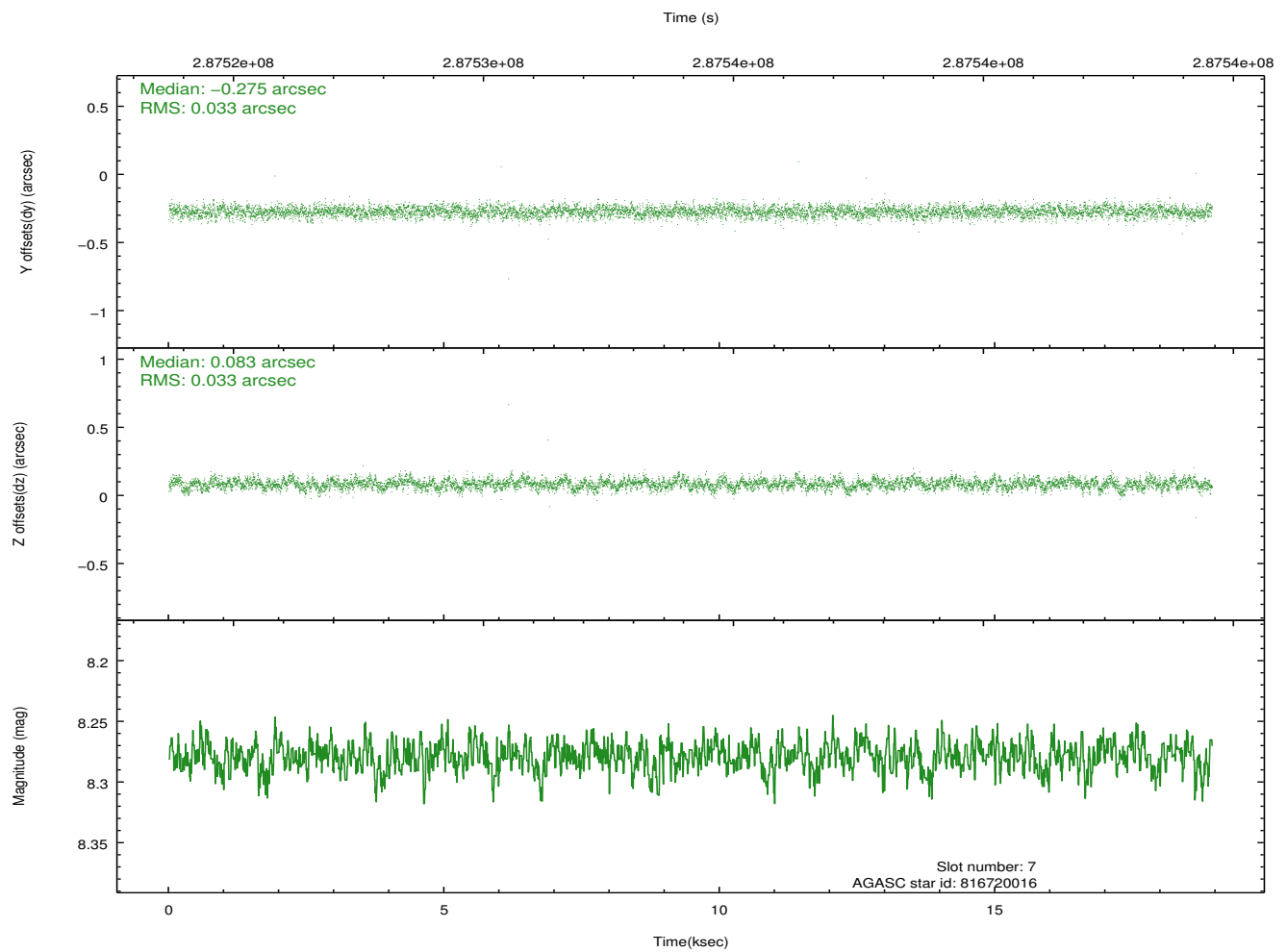
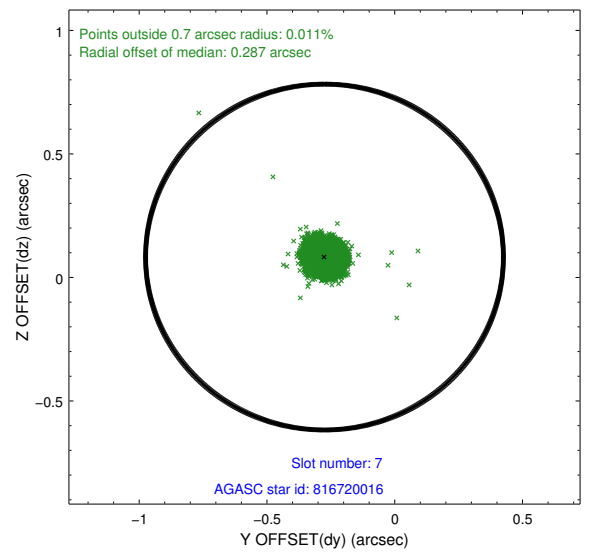
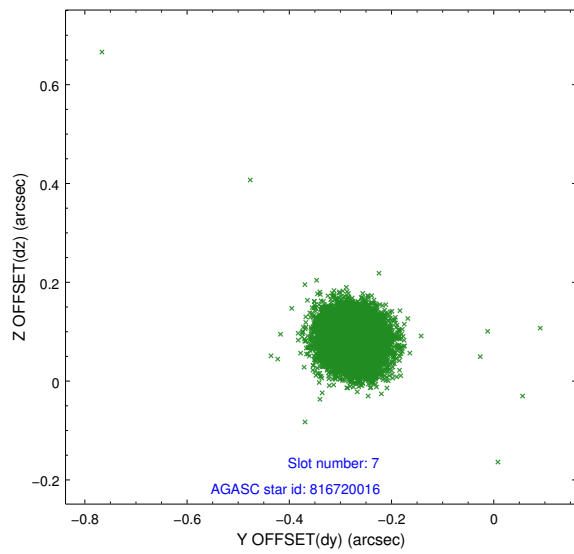
### 2.4.3 Slot 5



## 2.4.4 Slot 6

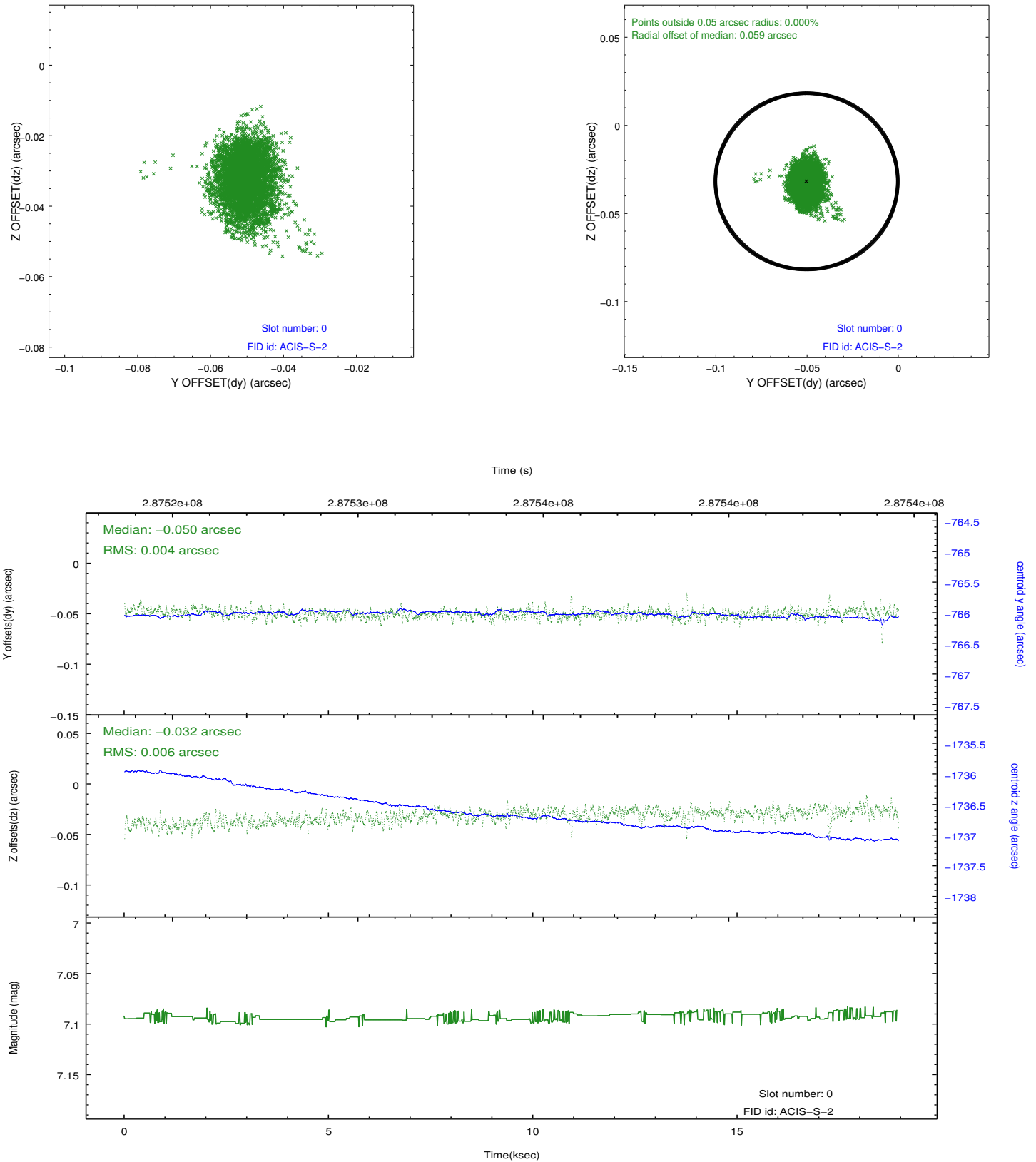


## 2.4.5 Slot 7

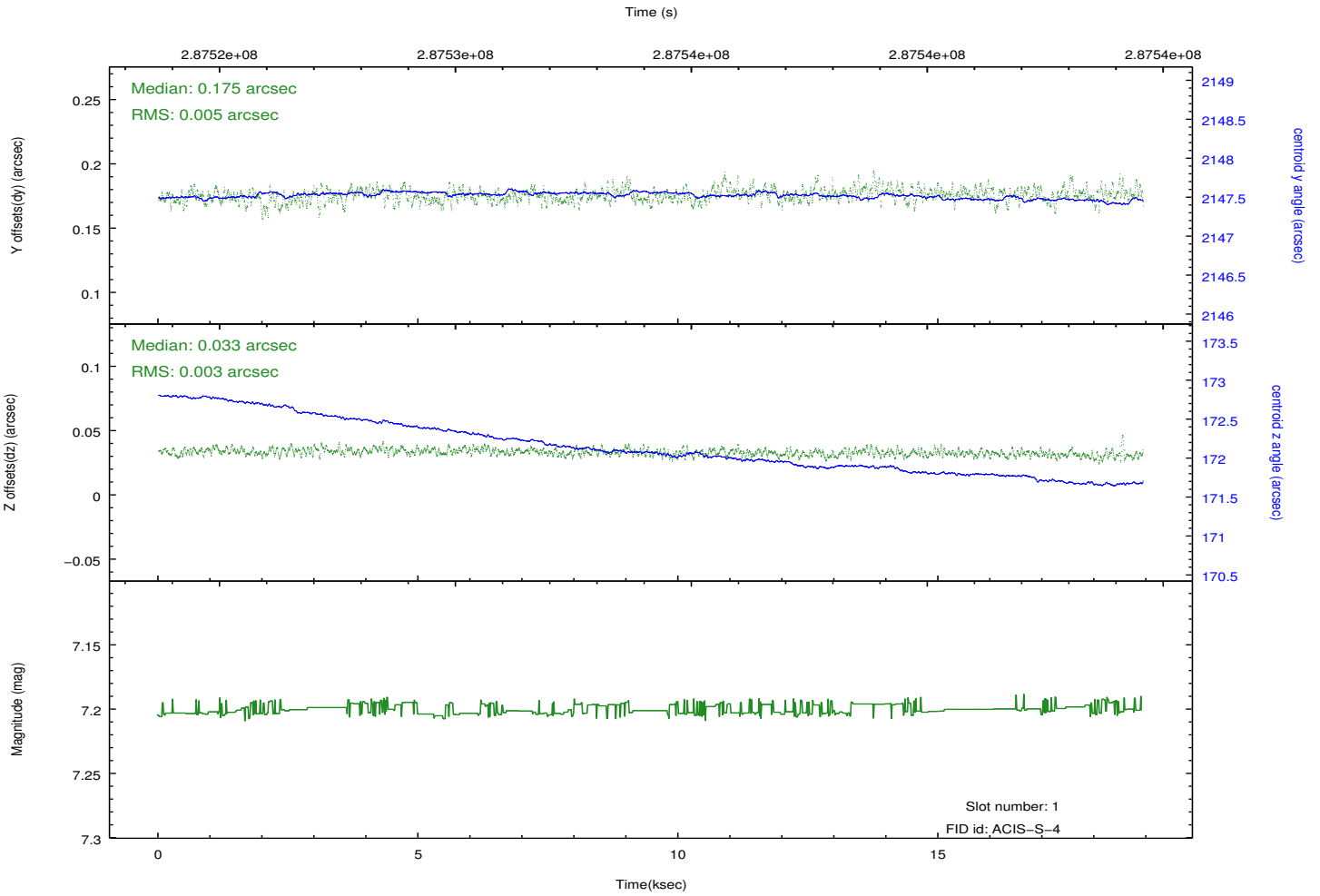
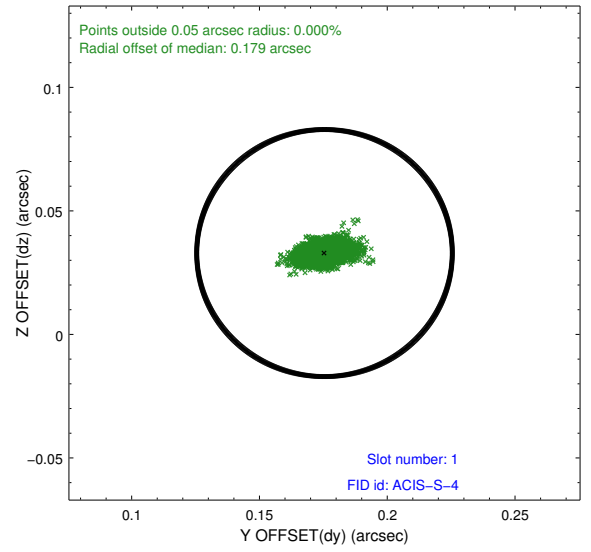
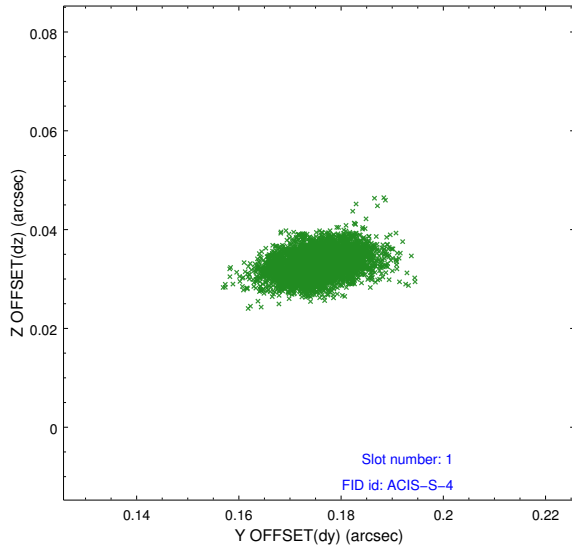


## 2.5 FID Slots

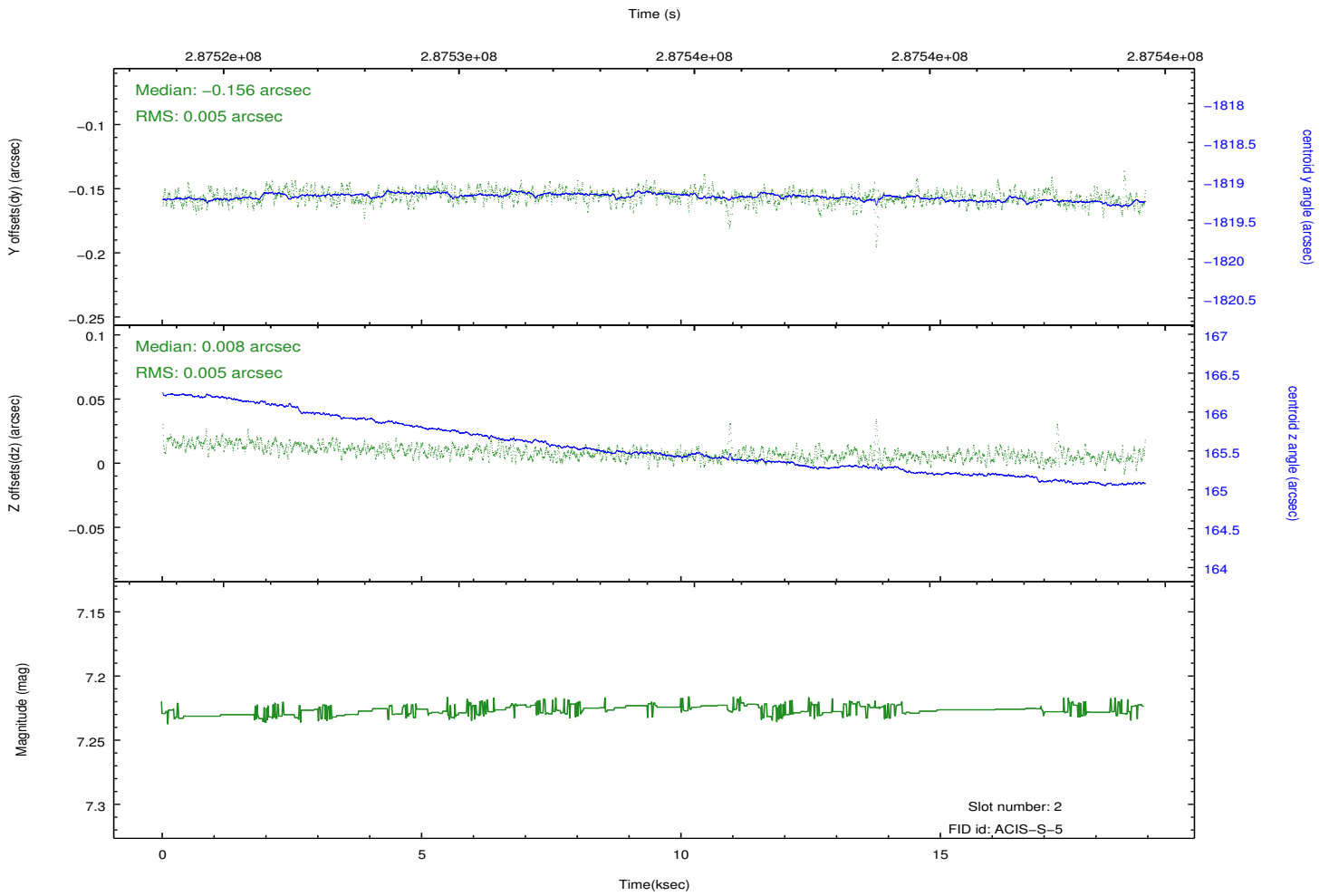
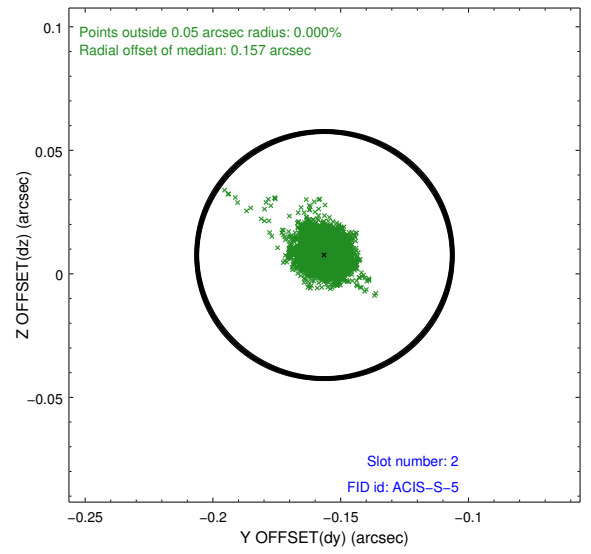
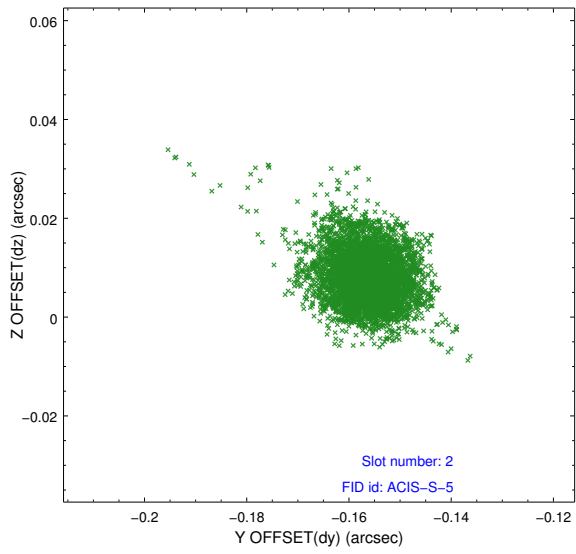
### 2.5.1 Slot 0



## 2.5.2 Slot 1



### 2.5.3 Slot 2



# A Summary

## A.1 Status

V&V Scientist	Beth Sundheim
V&V Date (YYYY-MM-DD)	2012.04.22
V&V Edition	1
V&V Disposition and Status	OK
V&V Charge Time	18.5287001

## A.2 Comments

Joint proposal with XMM.

Observation begins within specified window, but extends slightly beyond it.