

V&V Reference Report

L2 ASCDS Version : 8.4.3.1

Observation 8496 - L2 Version 3
Chandra X-Ray Center

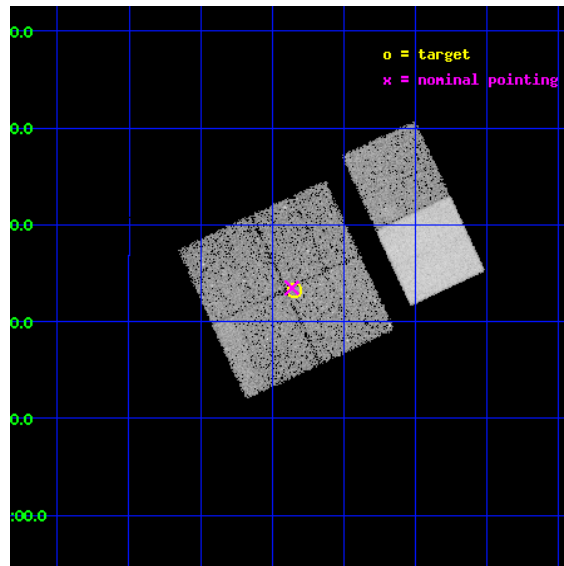
L2 Processing Date : Apr 16 2012

Contents

1	Front	2
2	OBI	3
2.1	OBI	3
2.1.1	Images	3
2.1.2	Bias	3
2.1.3	Parameters	4
2.1.4	Events	4
2.2	Compared Parameters	5
2.3	Aspect	6
2.4	Star Slots	9
2.4.1	Slot 3	9
2.4.2	Slot 4	10
2.4.3	Slot 5	11
2.4.4	Slot 6	12
2.4.5	Slot 7	13
2.5	FID Slots	14
2.5.1	Slot 0	14
2.5.2	Slot 1	15
2.5.3	Slot 2	16
A	Summary	17
A.1	Status	17
A.2	Comments	17

1 Front

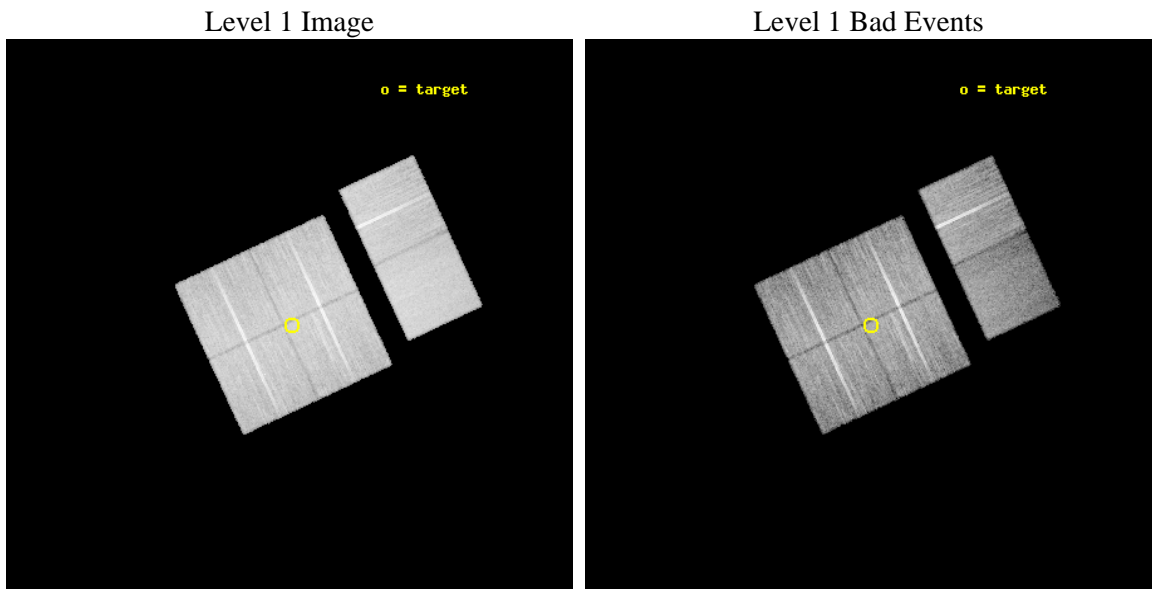
seq_num	900546	Sequence number
obs_id	8496	Observation id
title	THE CHANDRA-COSMOS SURVEY	Proposal title
observer	Dr. Martin Elvis	Principal investigator
object	C-COSMOS2-4	Source name
dtcycle	0	
cycle	P	events from which exps? Prim/Second/Both
ra_targ	150.087083	Observer's specified target RA [deg]
dec_targ	2.388217	Observer's specified target Dec [deg]
ra_nom	150.09054114125	Nominal RA [deg]
dec_nom	2.3914513179076	Nominal Dec [deg]
roll_nom	65.00855633092	Nominal Roll [deg]
revision	3	Processing version of data
ontime	18664.559994221	Sum of GTIs [s]
livetime	18428.218097125	Livetime [s]
ontime0	18664.436874211	Sum of GTIs [s]
ontime1	18664.477914214	Sum of GTIs [s]
ontime2	18664.518954217	Sum of GTIs [s]
ontime3	18664.559994221	Sum of GTIs [s]
ontime6	18664.642074227	Sum of GTIs [s]
ontime7	18664.601034224	Sum of GTIs [s]
l2events	124228	Number of level 2 events



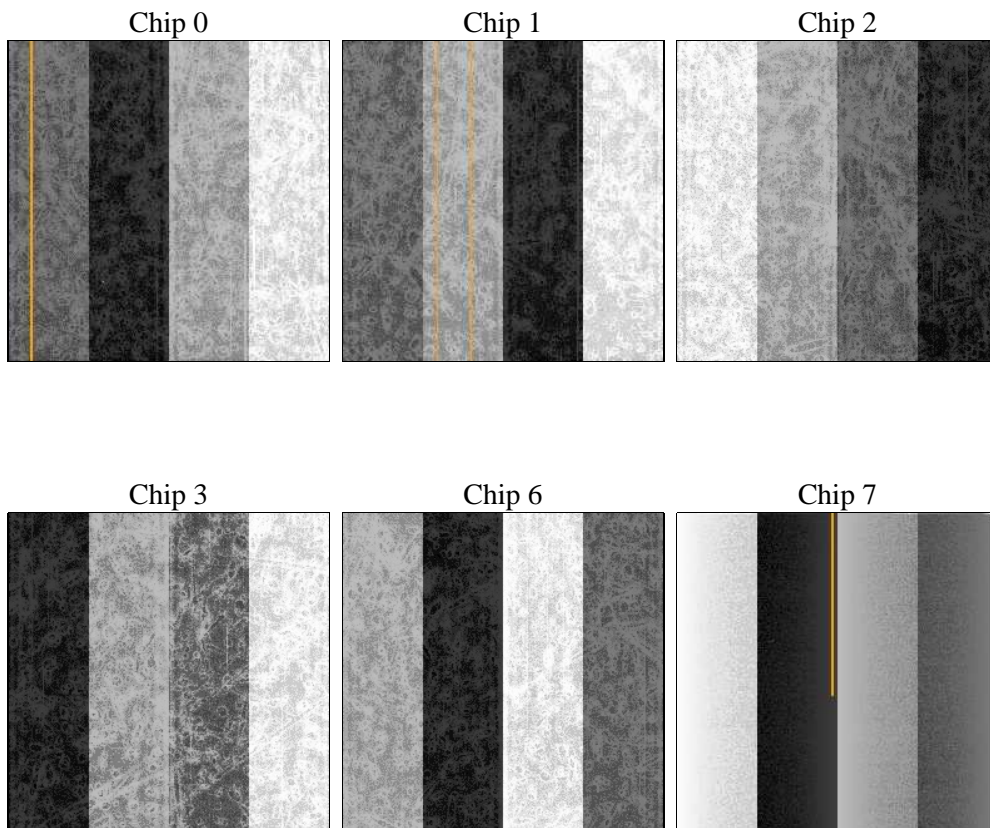
2 OBI

2.1 OBI

2.1.1 Images



2.1.2 Bias



2.1.3 Parameters

obi_num	0	Obi number	sched_exp_time	18633.114000	[s] Scheduled observation exposure time
ascdsver	8.4.3.1	Processing system revision	ontime	18664.559994221	Sum of GTIs [s]
caldbver	4.4.9	 	ontime0	18664.436874211	Sum of GTIs [s]
date	2012-04-16T04:10:33	Date and time of file creation	ontime1	18664.477914214	Sum of GTIs [s]
revision	3	Processing version of data	ontime2	18664.518954217	Sum of GTIs [s]
			ontime3	18664.559994221	Sum of GTIs [s]
			ontime6	18664.642074227	Sum of GTIs [s]
			ontime7	18664.601034224	Sum of GTIs [s]
			l1events	831850	Number of level 1 events

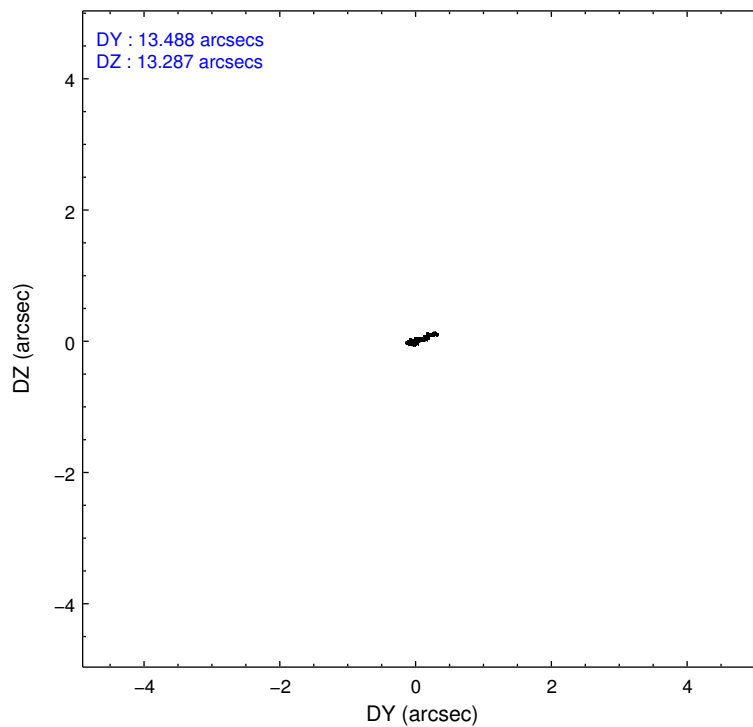
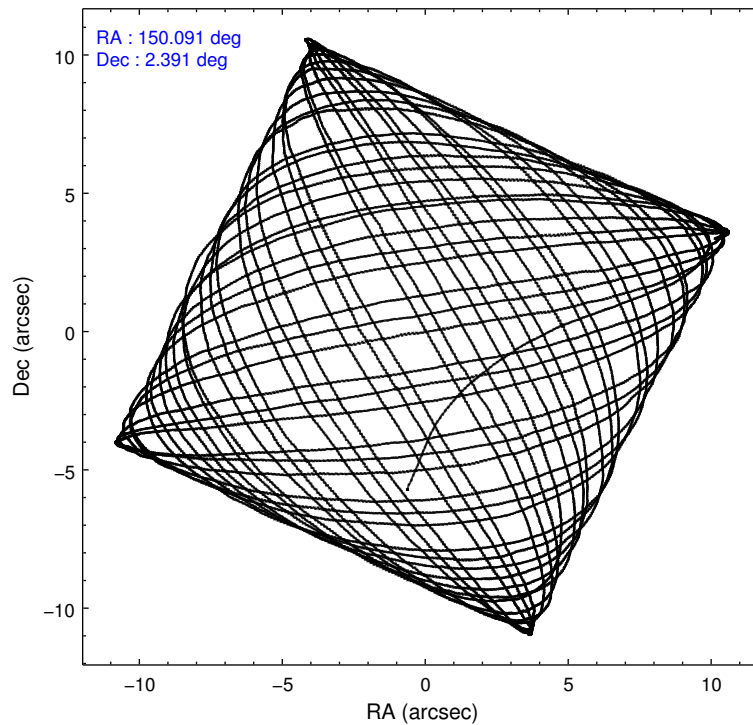
2.1.4 Events

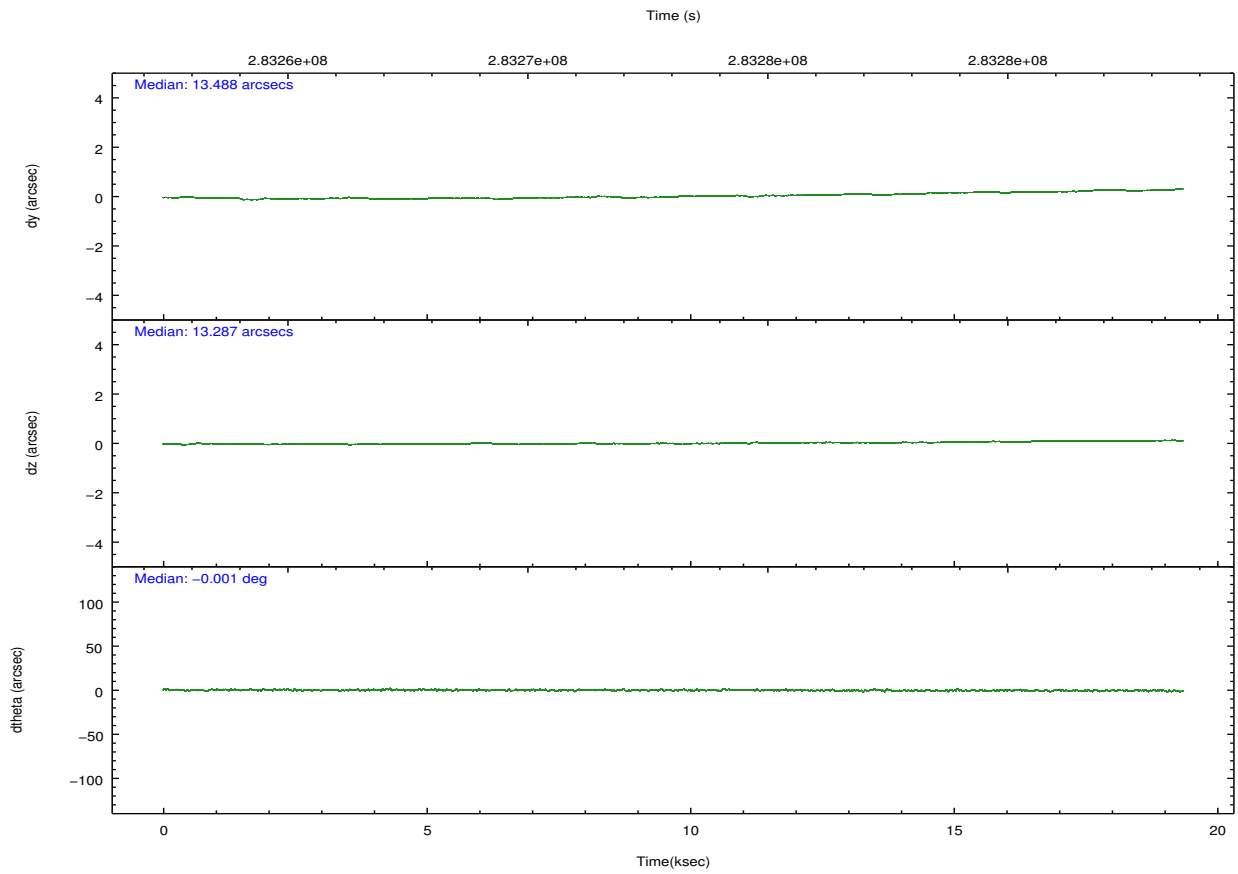
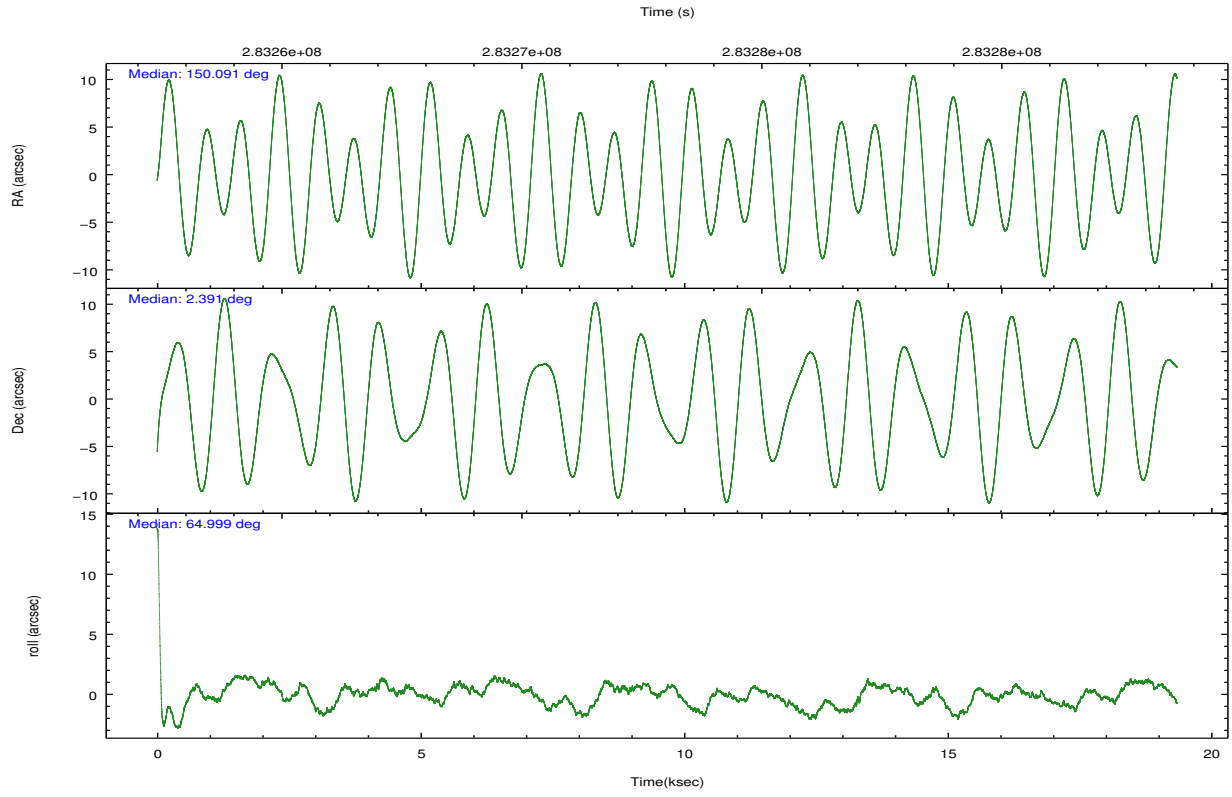
	ccd 0	ccd 1	ccd 2	ccd 3	ccd 6	ccd 7		ccd 0	ccd 1	ccd 2	ccd 3	ccd 6	ccd 7
level 1 events	131488	129352	143386	136522	139310	151792	grade 0 events	4700	5471	4736	4811	4959	6416
rejected events	117985	114375	130366	123484	125174	82790		3%	4%	3%	3%	3%	4%
rejected %	89%	88%	90%	90%	89%	54%	grade 1 events	58	48	79	70	69	186
								0%	0%	0%	0%	0%	0%
							grade 2 events	3202	3326	3041	2795	3090	13842
								2%	2%	2%	2%	2%	9%
							grade 3 events	1583	1617	1369	1497	1547	6334
								1%	1%	0%	1%	1%	4%
							grade 4 events	1418	1537	1455	1409	1483	6171
								1%	1%	1%	1%	1%	4%
							grade 5 events	4743	5080	4403	5459	5570	15819
								3%	3%	3%	3%	3%	10%
							grade 6 events	2603	3028	2420	2529	3060	36245
								1%	2%	1%	1%	2%	23%
							grade 7 events	113181	109245	125883	117952	119532	66779
								86%	84%	87%	86%	85%	43%

2.2 Compared Parameters

Parameter	Planned	Actual	Parameter	Planned	Actual
Instrument	ACIS	ACIS	Obspar format version number	7	7
Detector	ACIS-012367	ACIS-012367	Obspar file type	PREDICTED	ACTUAL
Grating	NONE	NONE	Obspar update status	NONE	UPDATED
Data mode	VFAINT	VFAINT	CCD I0 on	Y	Y
Observation mode	POINTING	POINTING	CCD I1 on	Y	Y
[deg] Pointing RA	150.093031	150.0905411412463	CCD I2 on	Y	Y
[deg] Pointing Dec	2.364053	2.391451317907613	CCD I3 on	Y	Y
[deg] Pointing Roll	64.799750	65.00855633092024	CCD S0 on	N	N
[mm] SIM focus pos	-0.782348	-0.7809083437167272	CCD S1 on	N	N
[mm] SIM defocus	0	0.001439871863259334	CCD S2 on	O1	Y
[mm] SIM translation stage pos	-233.592463	-233.5874344608287	CCD S3 on	O2	Y
[mm] SIM translation stage offset	0	-0.005018542100998502	CCD S4 on	N	N
[s] Observation start time (MET)	283264065.184000	283262791.73283	CCD S5 on	N	N
Observation start date	2006-12-23T12:26:40	2006-12-23T12:06:31	Number of optional ACIS chips dropped	0	0
[s] Observation end time (MET)	283282698.184000	283282938.10879	On-chip summing requested	N	N
Observation end date	2006-12-23T17:37:13	2006-12-23T17:42:18	Subarray requested	NONE	NONE
Read mode	TIMED	TIMED	Alternating exposures requested	N	N
			[s] Primary exposure time	0.000000	3.2

2.3 Aspect



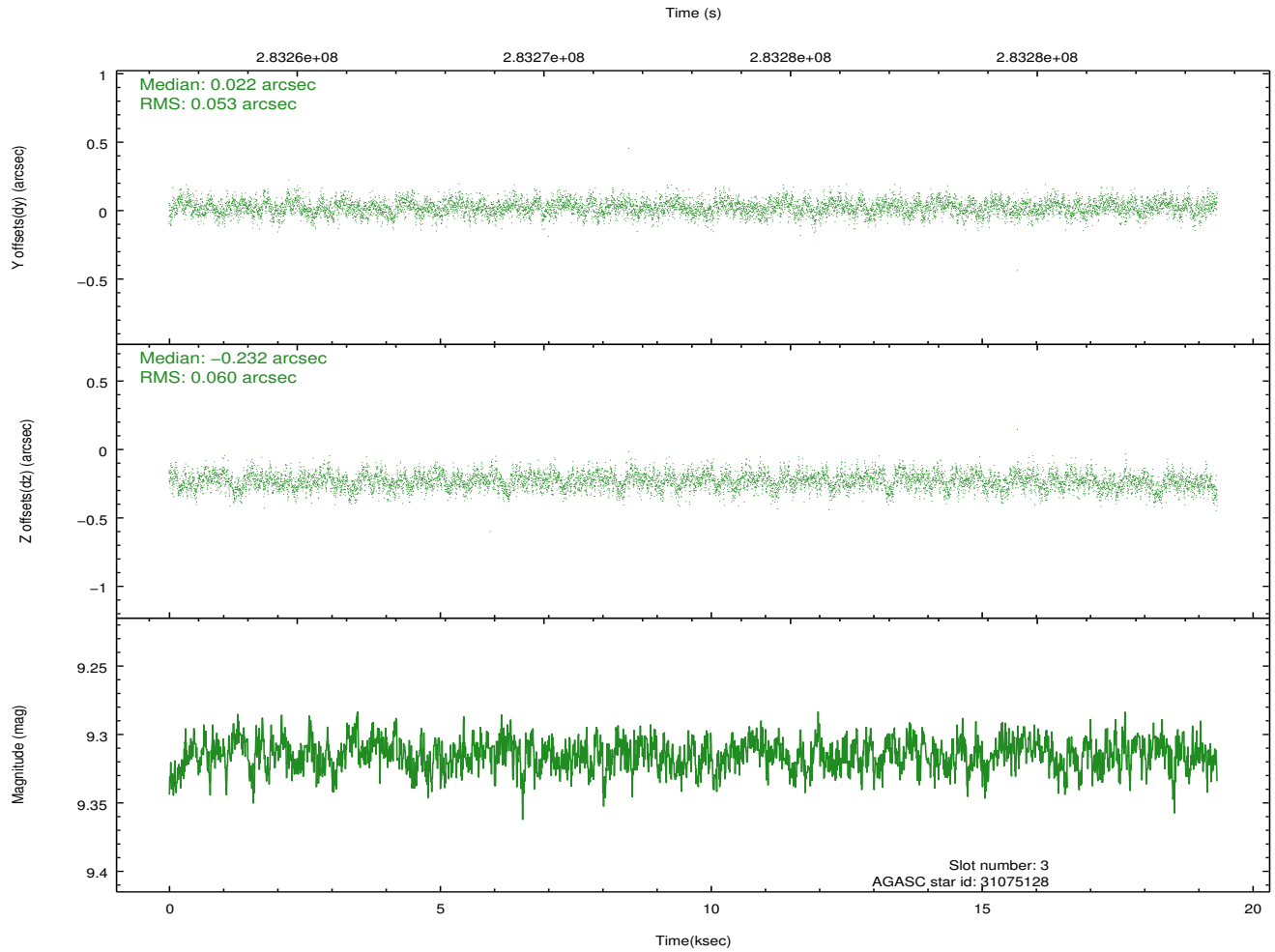
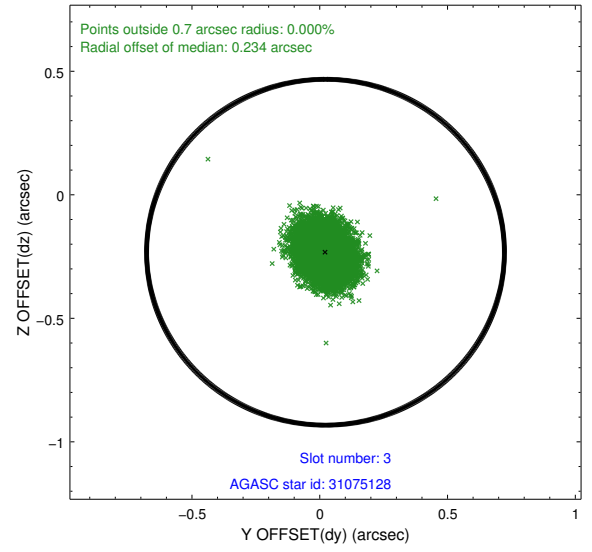
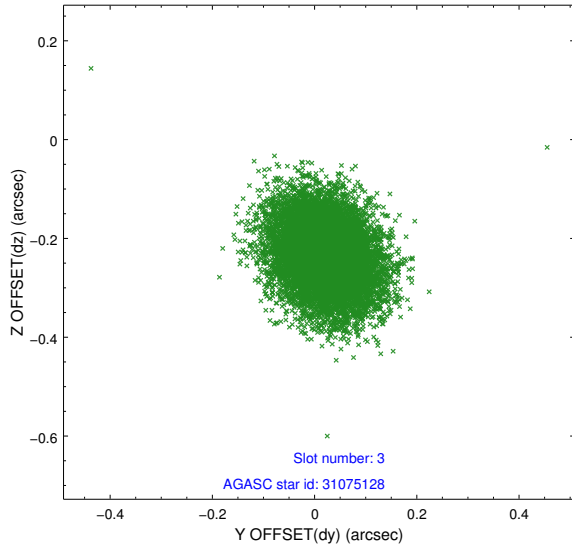


Slot Statistics

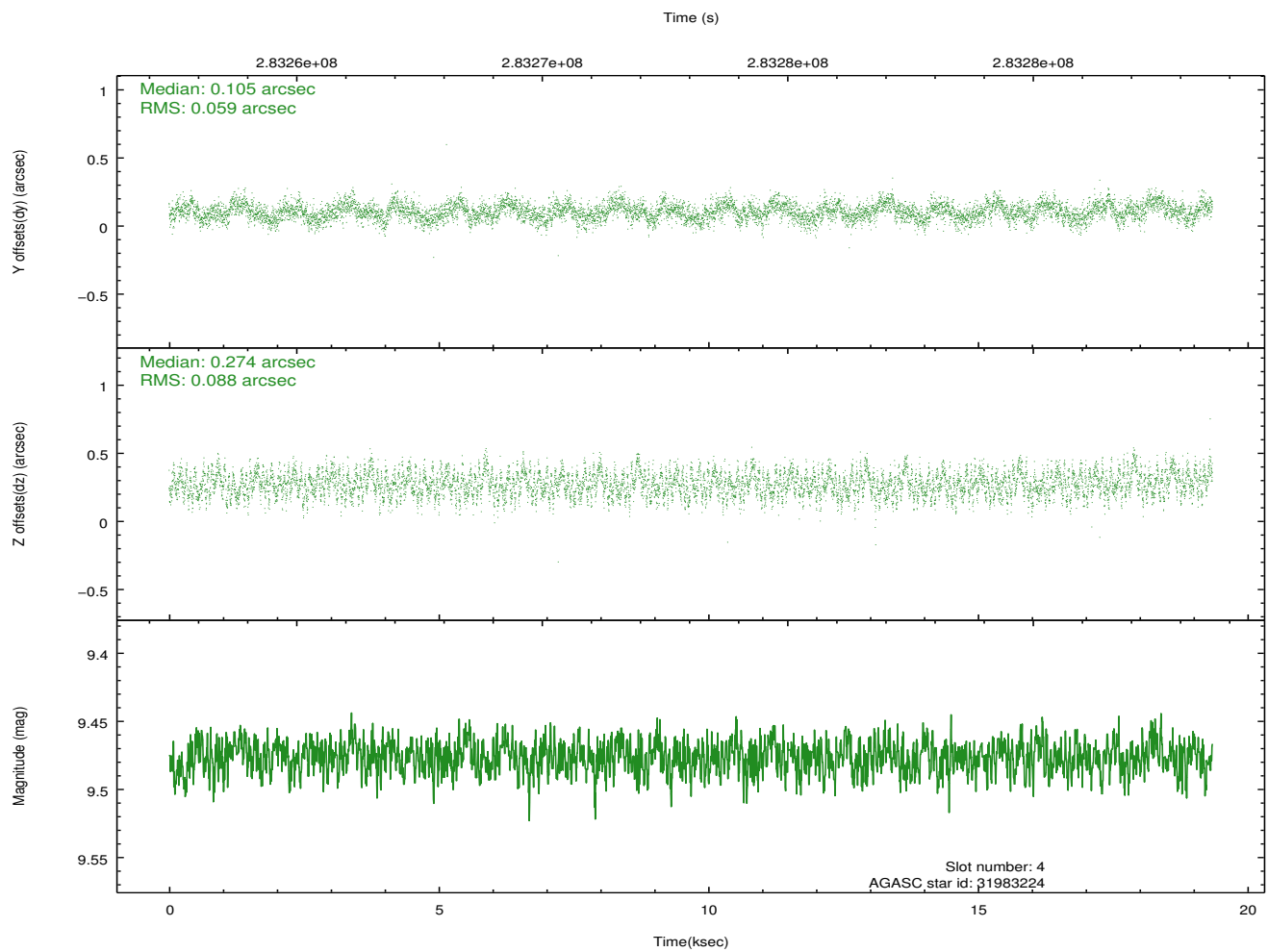
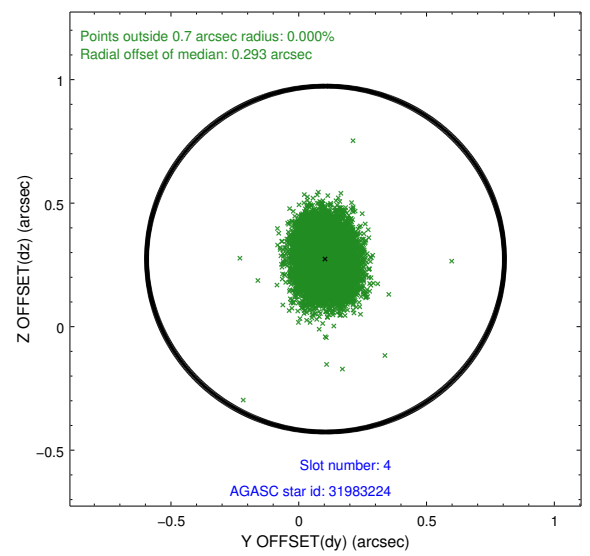
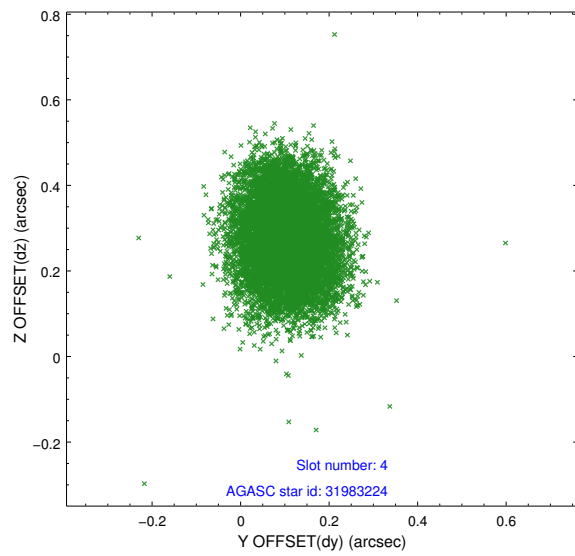
slot	status	id	mag	n_pts	med_dy	med_dz	dr1	dr2	ra	dec	mean_y	mean_z
0	FID	ACIS-I-1	7.25	4718	-0.006	-0.005	0.009	0.017	0.000000	0.000000	925.96	-836.87
1	FID	ACIS-I-4	7.19	4719	0.235	0.029	0.009	0.020	0.000000	0.000000	2146.38	1062.86
2	FID	ACIS-I-5	7.22	4720	-0.327	0.046	0.008	0.023	0.000000	0.000000	-1822.08	1061.00
3	GUIDE	31075128	9.32	9427	0.022	-0.232	0.085	0.140	149.584516	2.364347	-777.58	1655.44
4	GUIDE	31983224	9.48	9429	0.105	0.274	0.114	0.180	150.543757	1.869948	-918.14	-2224.21
5	GUIDE	31983336	8.59	9438	0.131	0.057	0.064	0.105	150.429924	2.291234	279.40	-1208.01
6	GUIDE	32374896	9.22	9431	-0.169	0.109	0.094	0.154	150.682269	2.512794	1387.54	-1689.05
7	GUIDE	31463496	9.46	9429	-0.089	-0.198	0.113	0.181	149.845020	2.964001	1574.71	1726.57

2.4 Star Slots

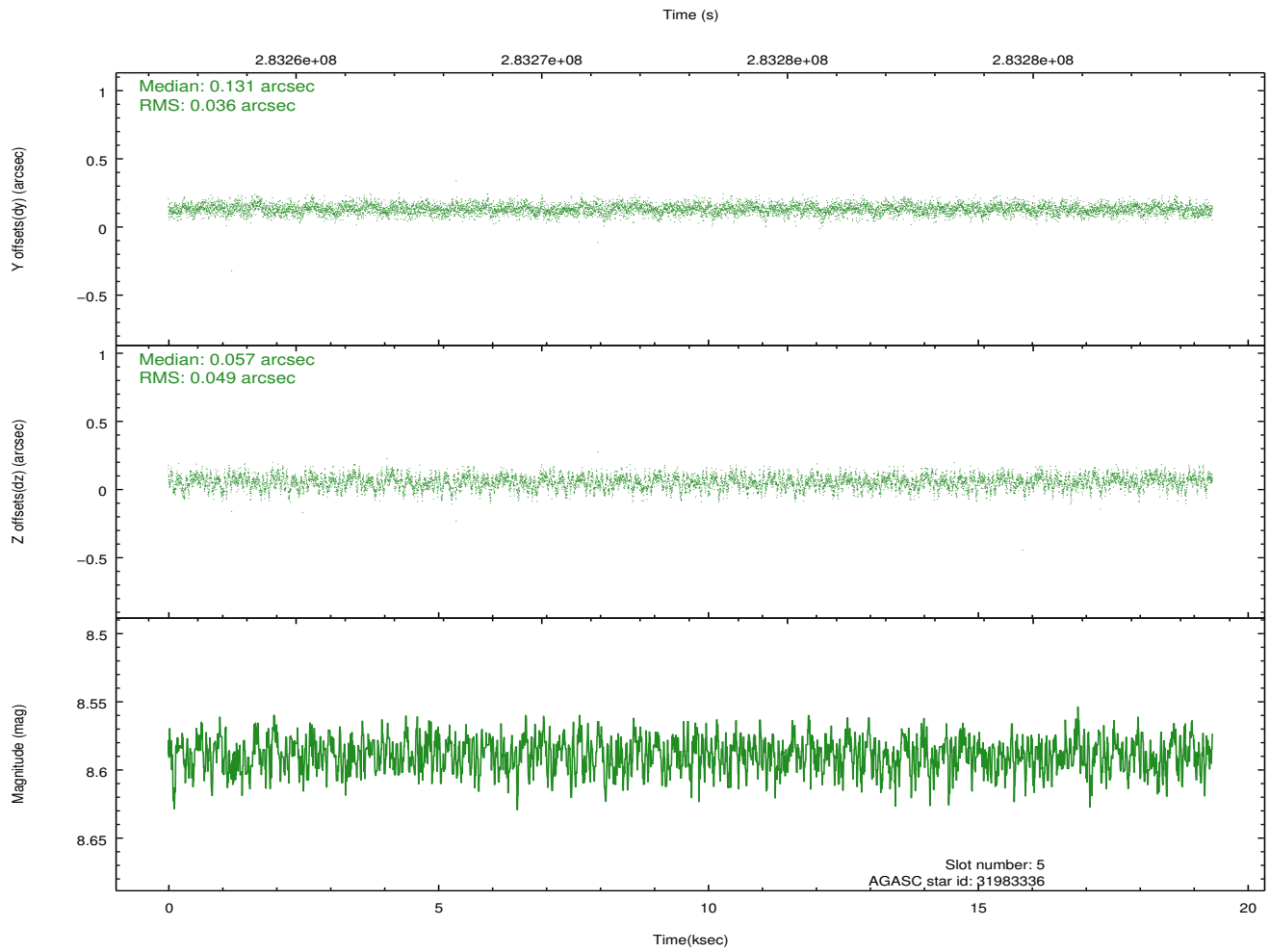
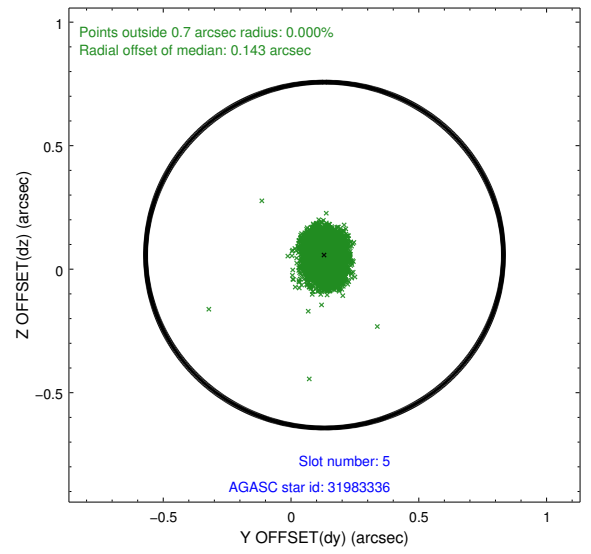
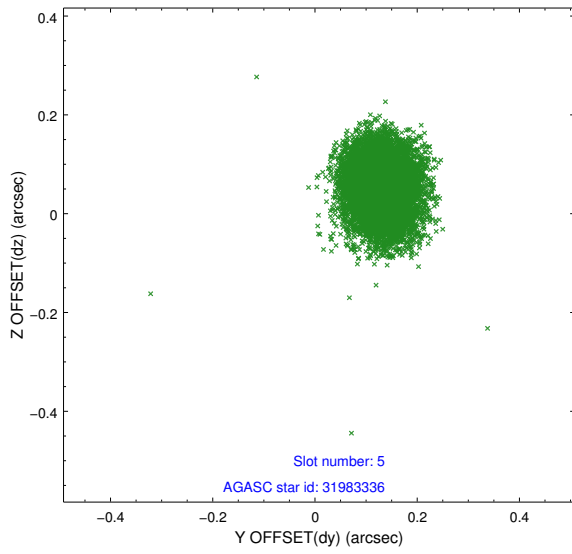
2.4.1 Slot 3



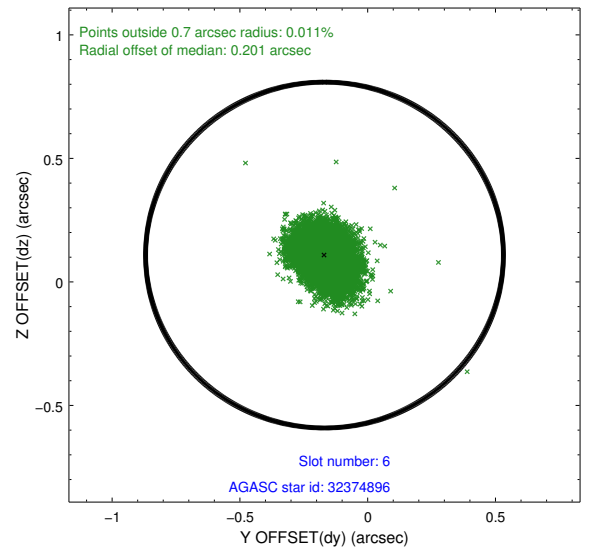
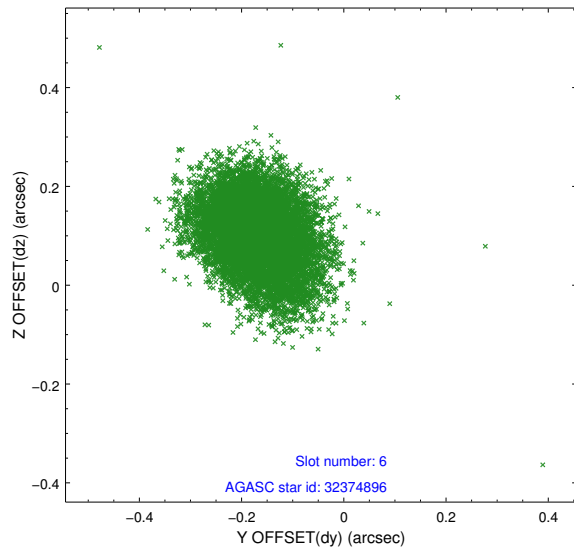
2.4.2 Slot 4



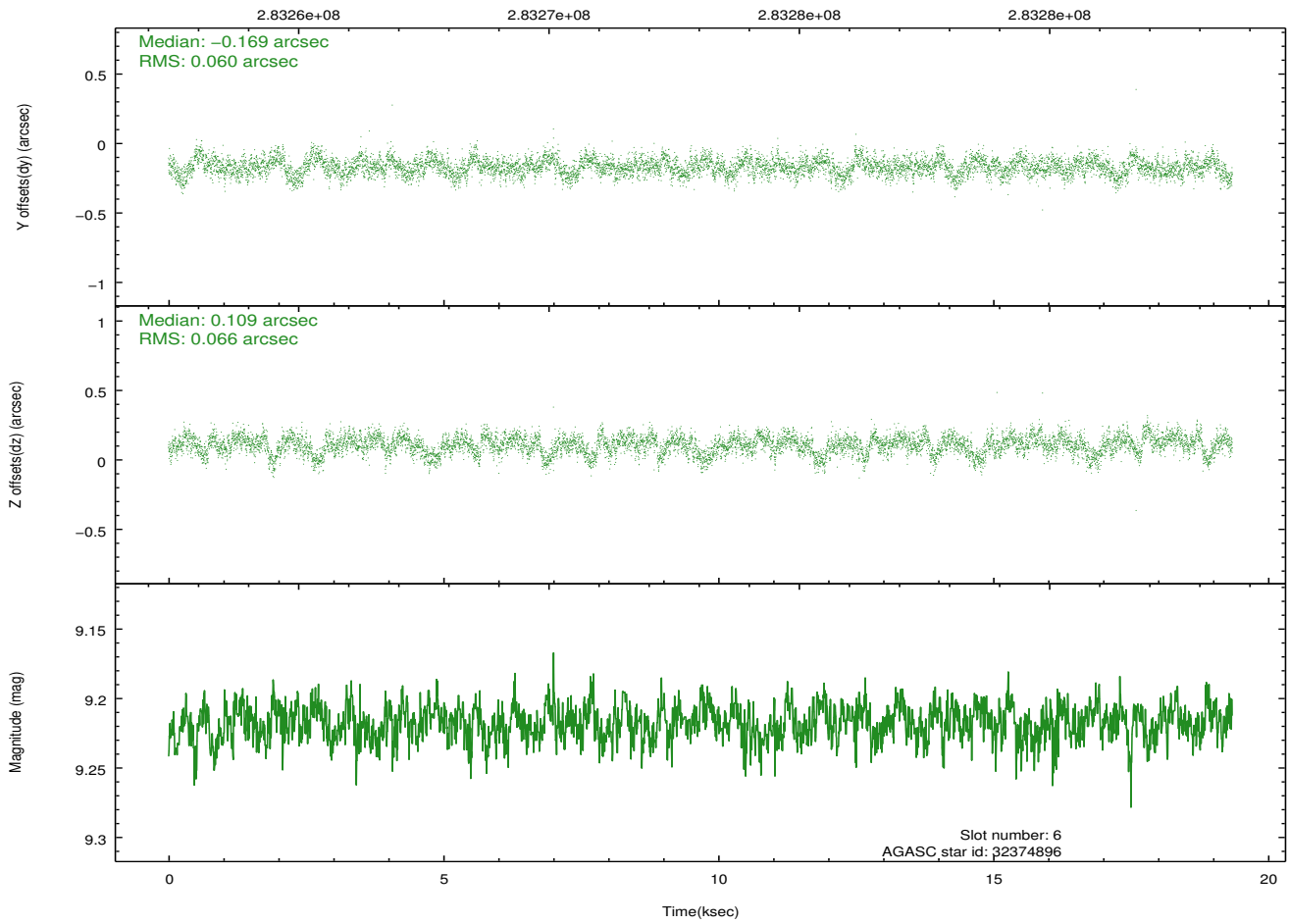
2.4.3 Slot 5



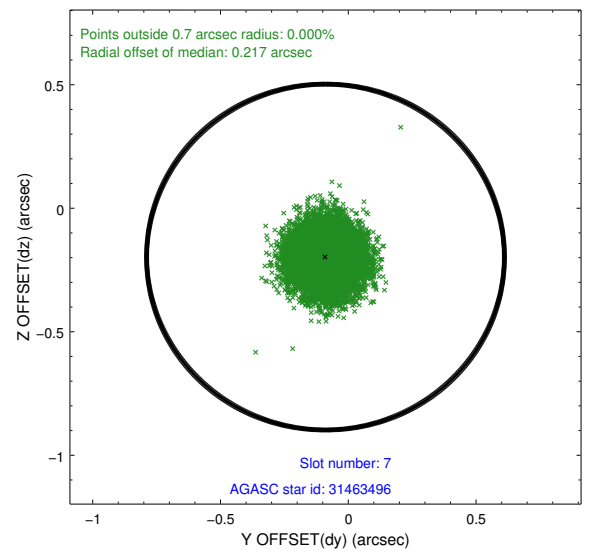
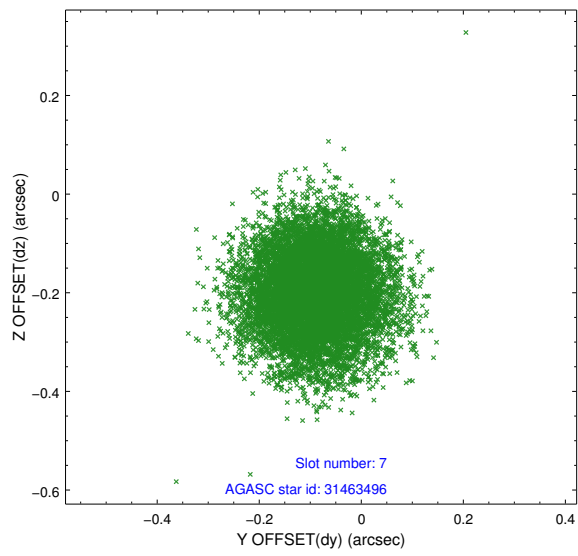
2.4.4 Slot 6



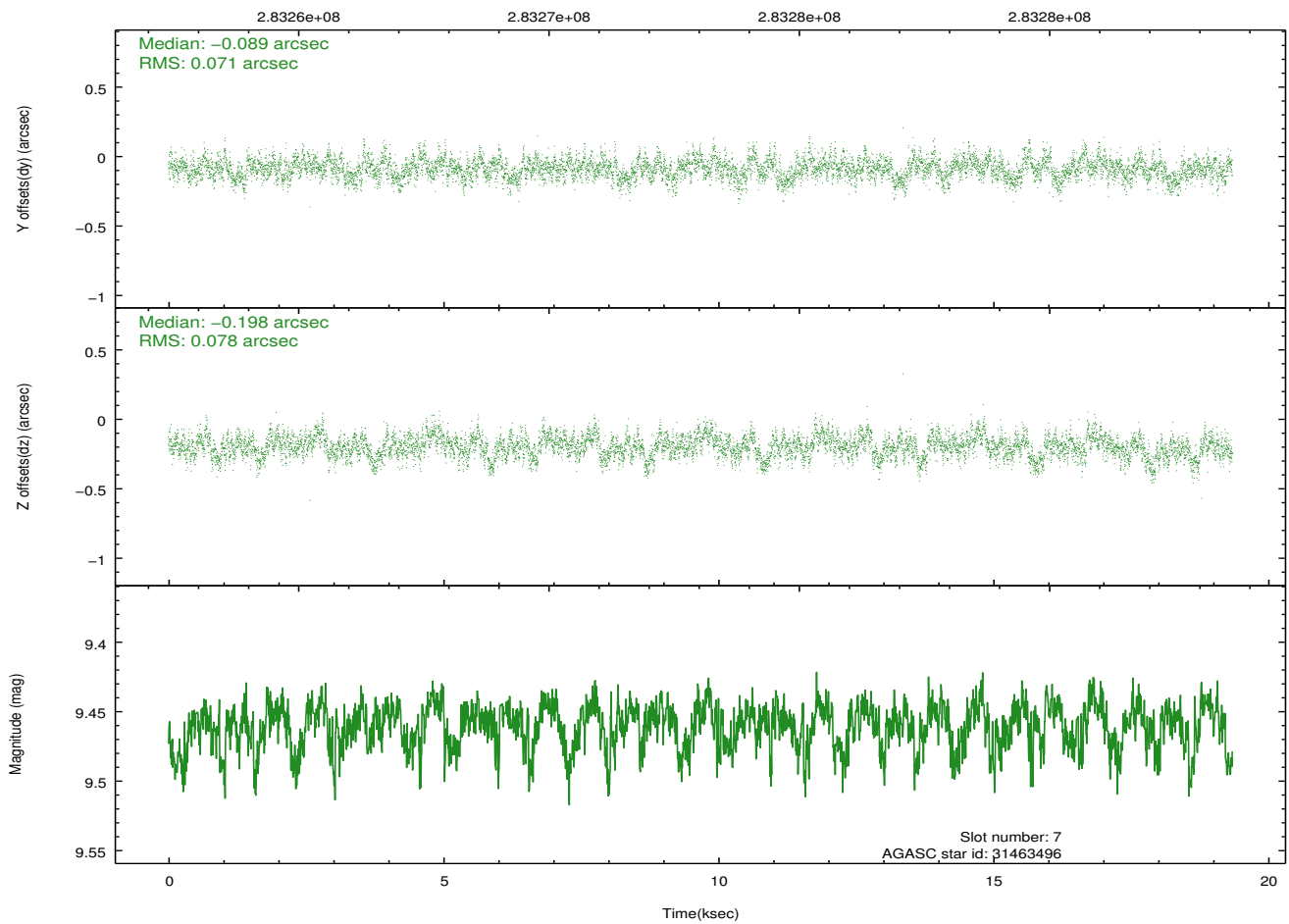
Time (s)



2.4.5 Slot 7

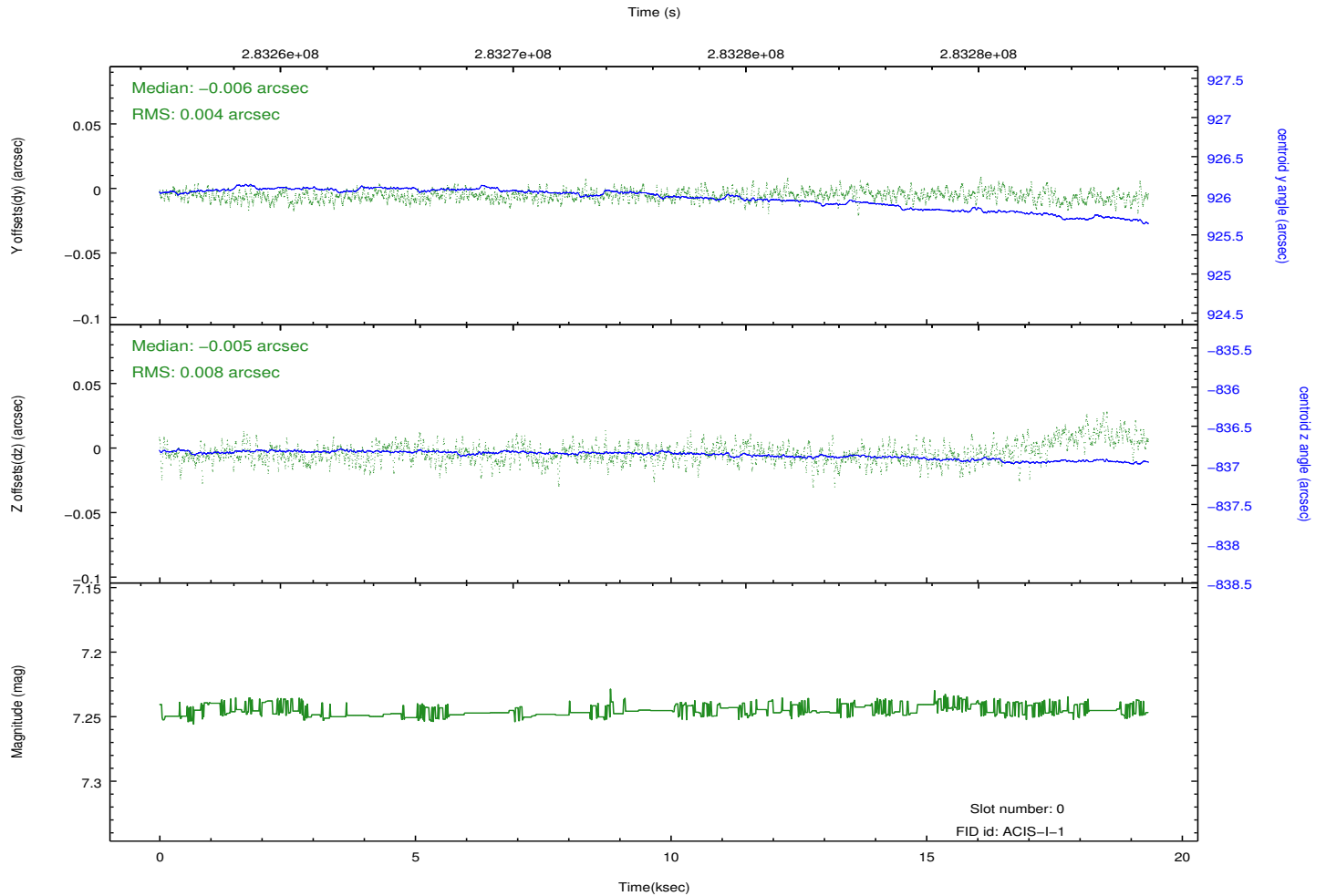
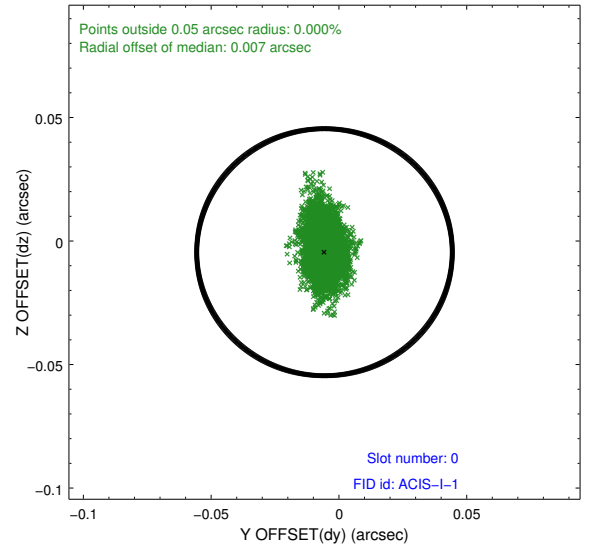
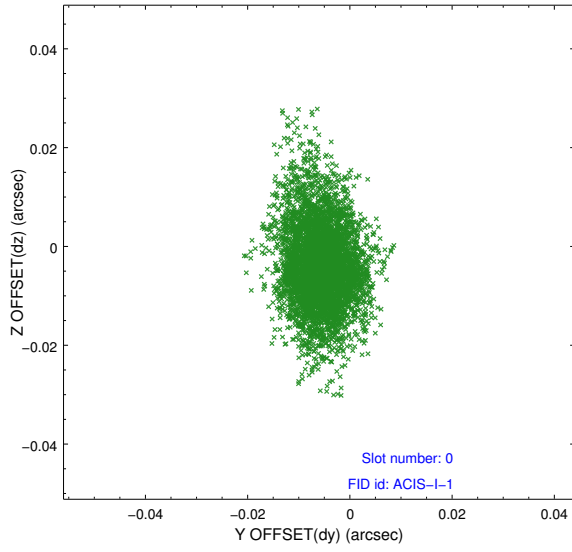


Time (s)

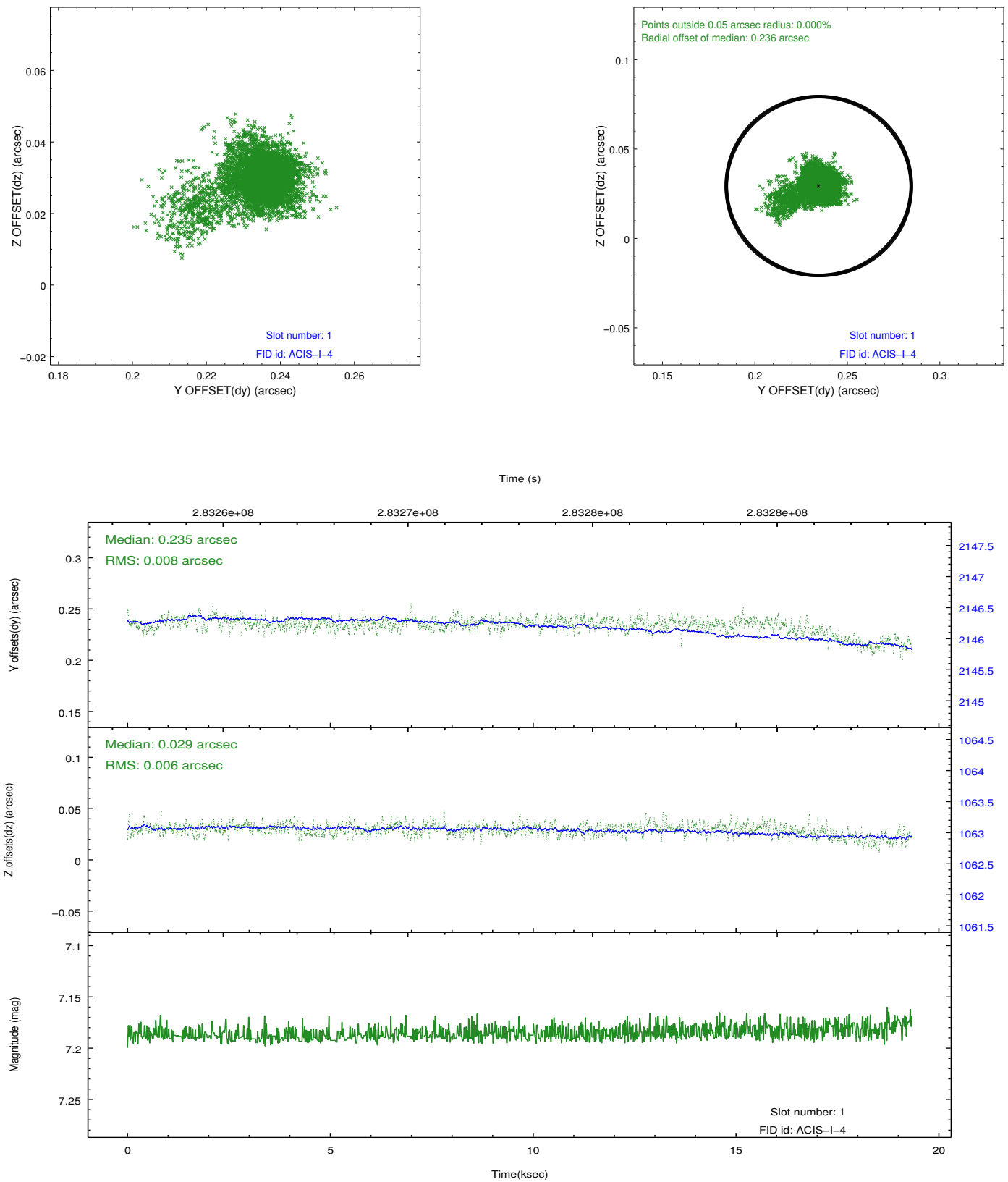


2.5 FID Slots

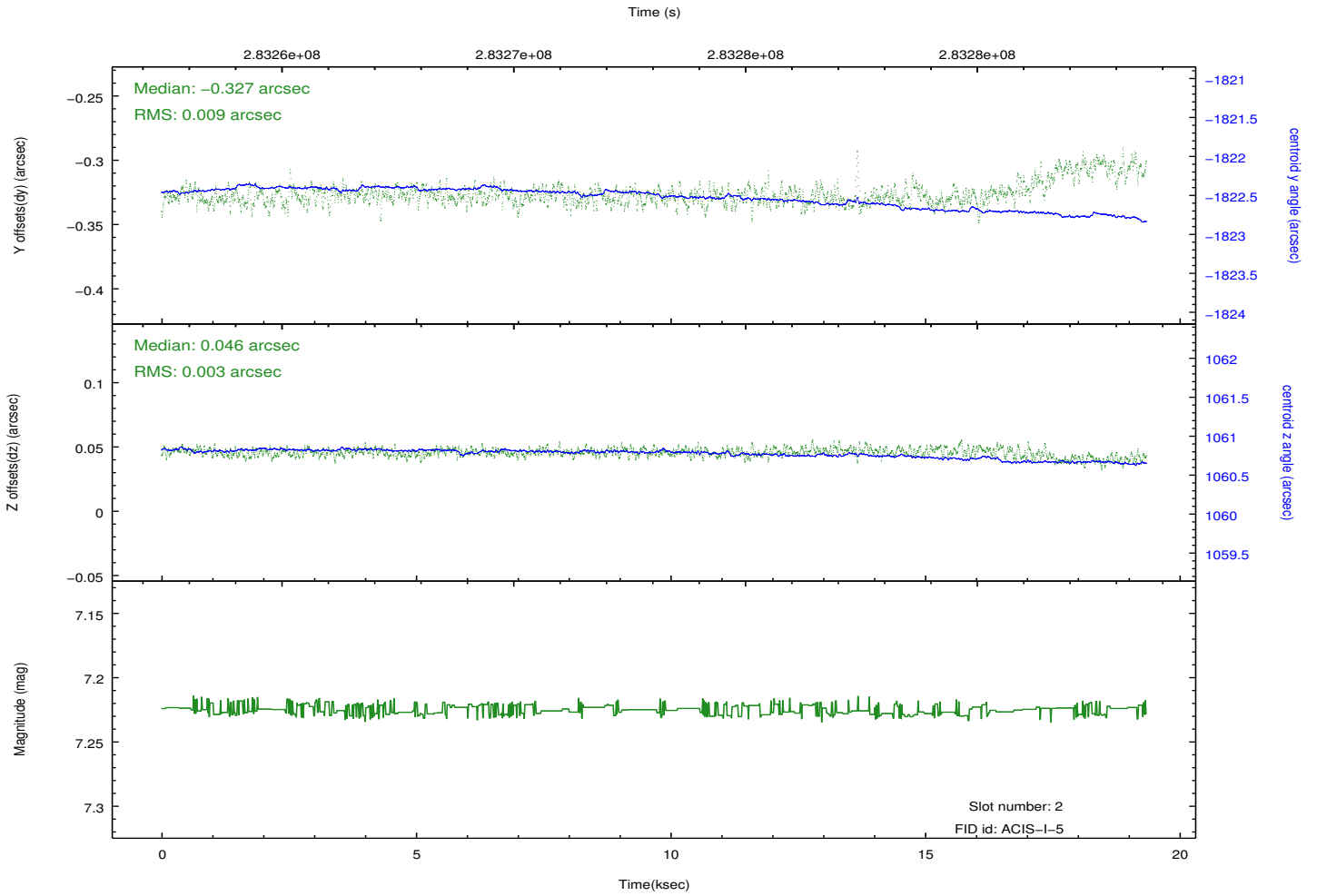
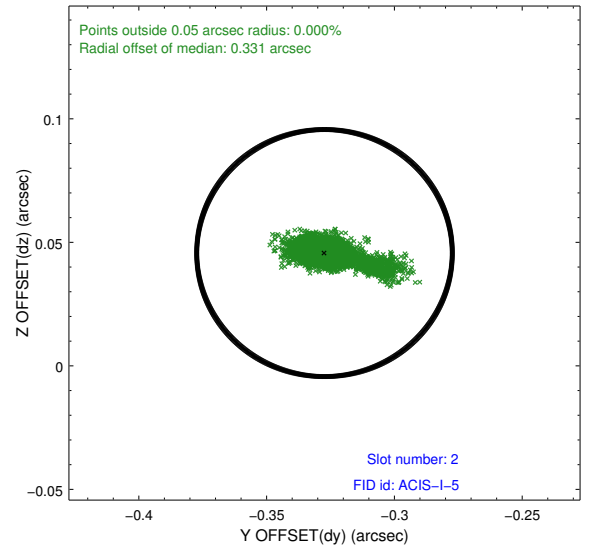
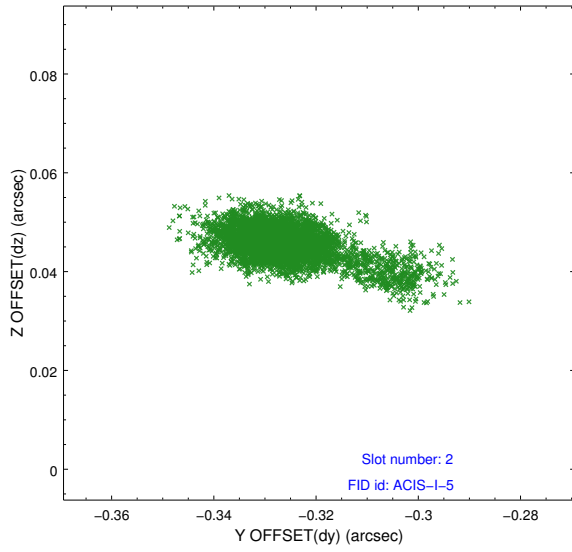
2.5.1 Slot 0



2.5.2 Slot 1



2.5.3 Slot 2



A Summary

A.1 Status

V&V Scientist	Jen Lauer
V&V Date (YYYY-MM-DD)	2012.04.18
V&V Edition	1
V&V Disposition and Status	OK
V&V Charge Time	18.6655999

A.2 Comments