

# V&V Reference Report

## L2 ASCDS Version : 8.4.5

Observation 856 - L2 Version 4  
Chandra X-Ray Center

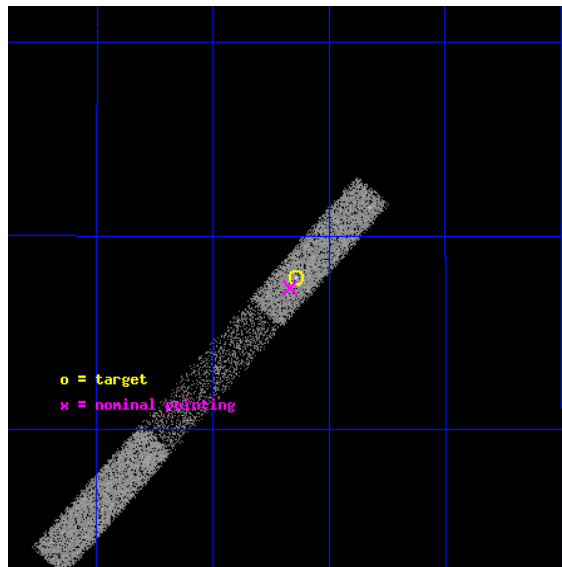
L2 Processing Date : Aug 24 2012

## Contents

<b>1</b>	<b>Front</b>	<b>2</b>
<b>2</b>	<b>OBI</b>	<b>3</b>
2.1	OBI . . . . .	3
2.1.1	Images . . . . .	3
2.1.2	Bias . . . . .	3
2.1.3	Parameters . . . . .	4
2.1.4	Events . . . . .	4
2.2	Compared Parameters . . . . .	5
2.3	Aspect . . . . .	6
2.4	Star Slots . . . . .	9
2.4.1	Slot 3 . . . . .	9
2.4.2	Slot 4 . . . . .	10
2.4.3	Slot 5 . . . . .	11
2.4.4	Slot 6 . . . . .	12
2.4.5	Slot 7 . . . . .	13
2.5	FID Slots . . . . .	14
2.5.1	Slot 0 . . . . .	14
2.5.2	Slot 1 . . . . .	15
2.5.3	Slot 2 . . . . .	16
<b>A</b>	<b>Summary</b>	<b>17</b>
A.1	Status . . . . .	17
A.2	Comments . . . . .	17

# 1 Front

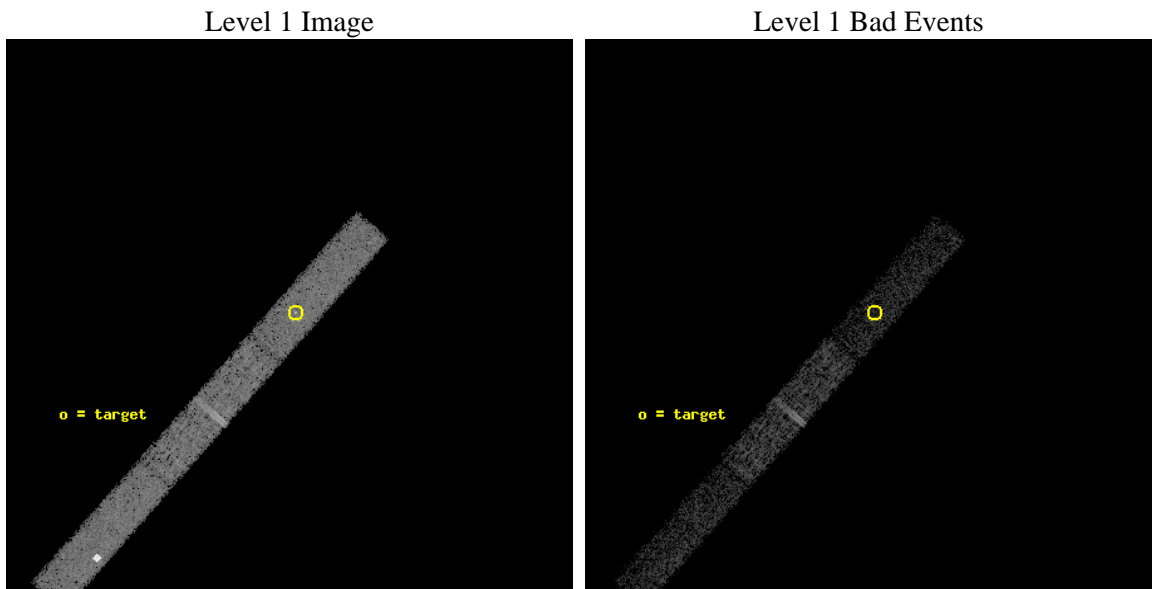
seq_num	700161	Sequence number
obs_id	856	Observation id
title	HUNTING THE AGN CORES IN FR1 RADIO GALAXIES	Proposal title
observer	Prof Diana Worrall	Principal investigator
object	B2 0206+35	Source name
dtcycle	0	&#160
cycle	P	events from which exps? Prim/Second/Both
ra_targ	32.410833	Observer's specified target RA [deg]
dec_targ	35.797389	Observer's specified target Dec [deg]
ra_nom	32.417217945561	Nominal RA [deg]
dec_nom	35.78869605143	Nominal Dec [deg]
roll_nom	311.45227362415	Nominal Roll [deg]
revision	4	Processing version of data
ontime	8572.5000567734	Sum of GTIs [s]
livetime	8198.641982377	Livetime [s]
ontime5	8572.5000567734	Sum of GTIs [s]
ontime6	8572.5000567734	Sum of GTIs [s]
ontime7	8572.5000567734	Sum of GTIs [s]
l2events	20096	Number of level 2 events



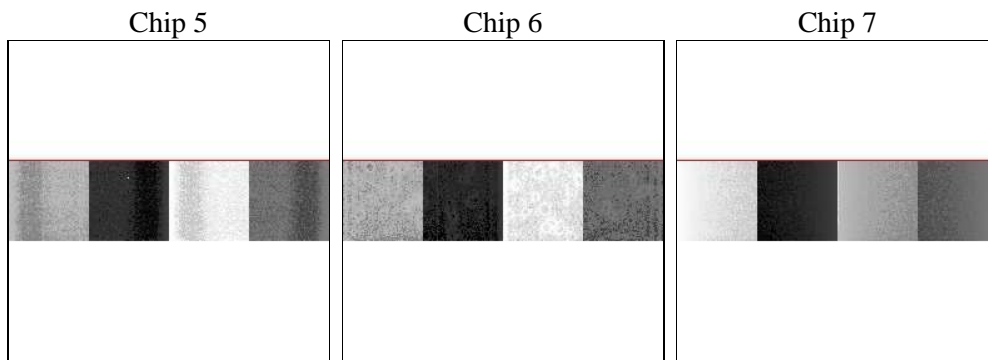
## 2 OBI

### 2.1 OBI

#### 2.1.1 Images



#### 2.1.2 Bias



### 2.1.3 Parameters

obi_num	0	Obi number	sched_exp_time	8150.000000	[s] Scheduled observation exposure time
ascdsver	8.4.5	Processing system revision	ontime	8572.5000567734	Sum of GTIs [s]
caldsver	4.5.1.1	&#160	ontime5	8572.5000567734	Sum of GTIs [s]
date	2012-08-24T13:33:52	Date and time of file creation	ontime6	8572.5000567734	Sum of GTIs [s]
revision	4	Processing version of data	ontime7	8572.5000567734	Sum of GTIs [s]
			l1events	75932	Number of level 1 events

### 2.1.4 Events

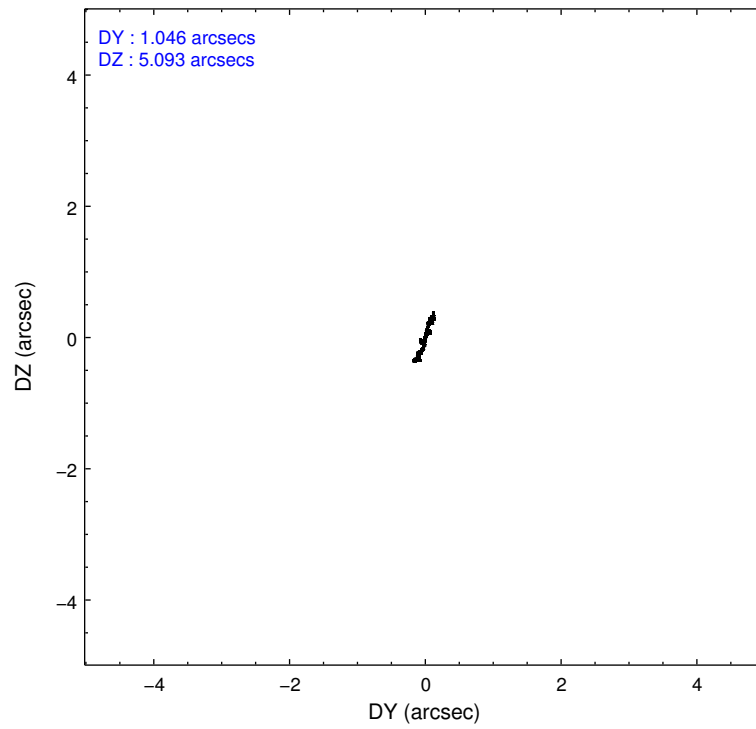
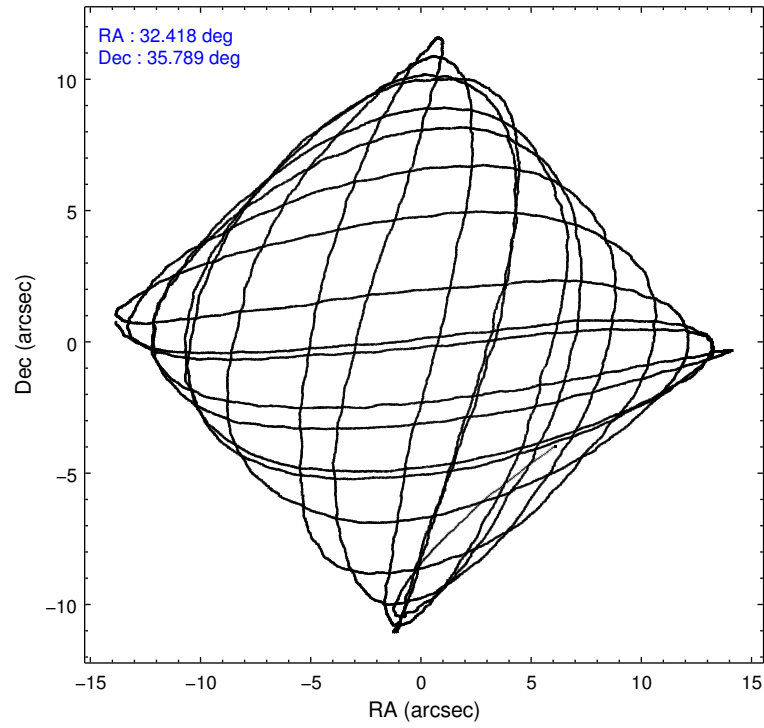
	ccd 5	ccd 6	ccd 7
level 1 events	31248	23455	21229
rejected events	12968	21210	11803
rejected %	41%	90%	55%

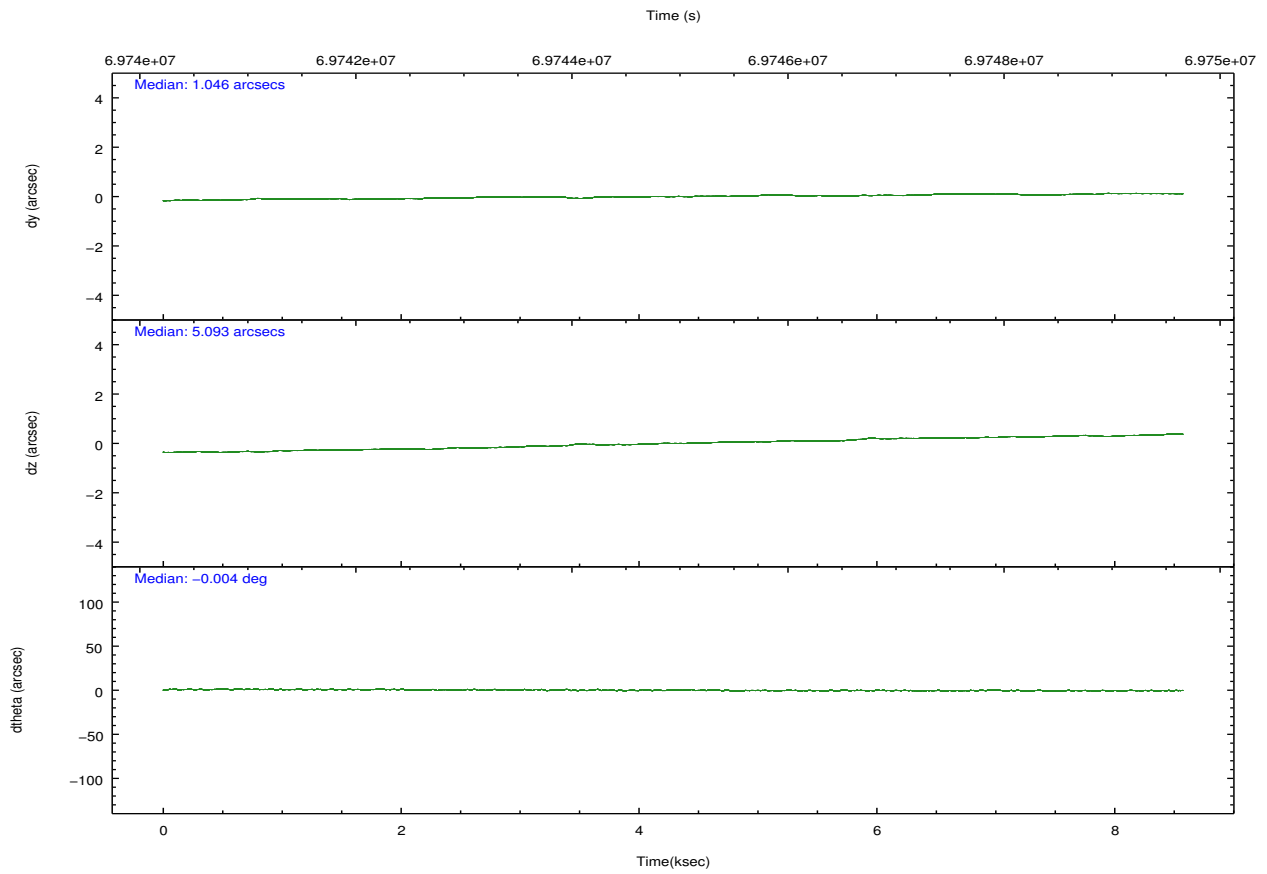
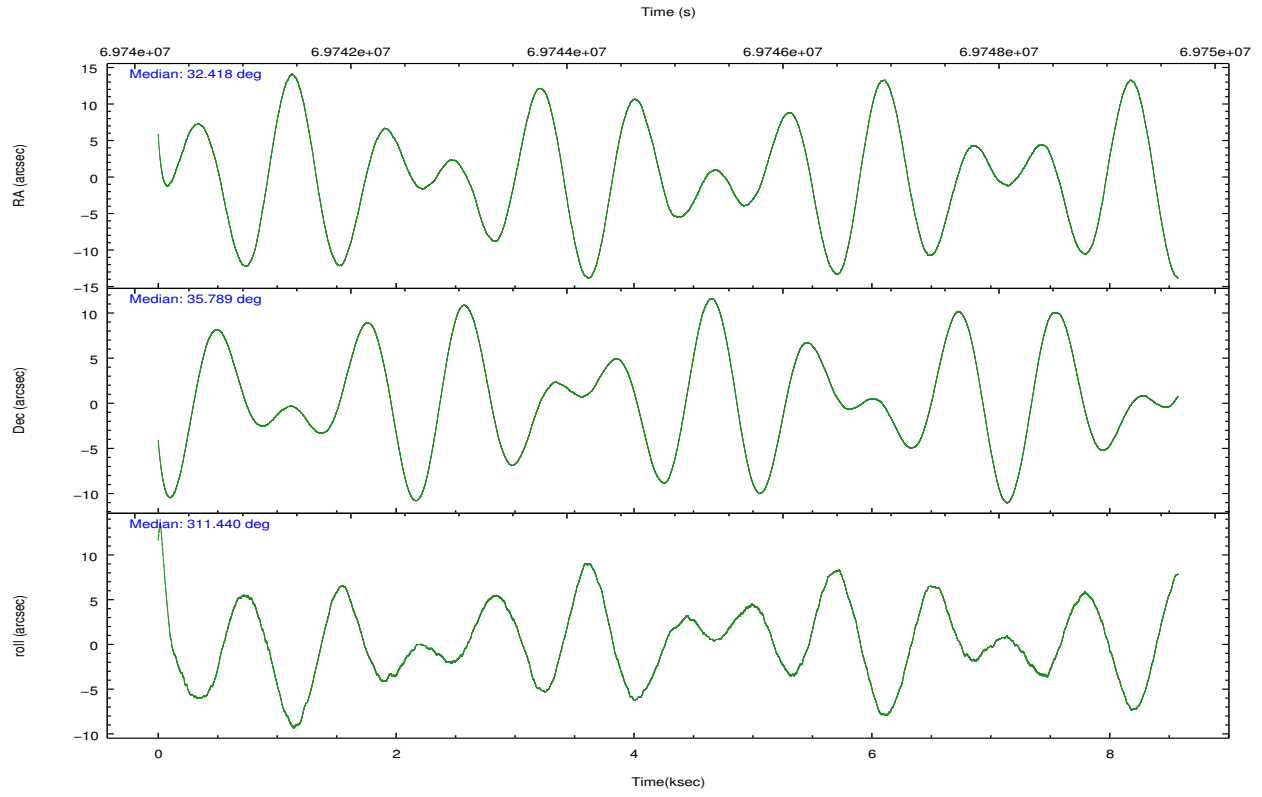
	ccd 5	ccd 6	ccd 7
grade 0 events	9396	896	1217
	30%	3%	5%
grade 1 events	75	8	22
	0%	0%	0%
grade 2 events	3433	336	2015
	10%	1%	9%
grade 3 events	833	392	1139
	2%	1%	5%
grade 4 events	676	352	1116
	2%	1%	5%
grade 5 events	1810	614	1864
	5%	2%	8%
grade 6 events	5015	396	4443
	16%	1%	20%
grade 7 events	10010	20461	9413
	32%	87%	44%

## 2.2 Compared Parameters

Parameter	Planned	Actual	Parameter	Planned	Actual
Instrument	ACIS	ACIS	Obspar format version number	7	7
Detector	ACIS-567	ACIS-567	Obspar file type	PREDICTED	ACTUAL
Grating	NONE	NONE	Obspar update status	NONE	UPDATED
Data mode	VFAINT	VFAINT	Number of optional ACIS chips dropped	0	0
Observation mode	POINTING	POINTING	On-chip summing requested	N	N
[deg] Pointing RA	32.385070	32.41721794556112	Subarray requested	CUSTOM	1/4
[deg] Pointing Dec	35.797442	35.78869605143021	Subarray start row	385	385
[deg] Pointing Roll	311.314436	311.4522736241491	Subarray row count	256	256
[mm] SIM focus pos	-0.684267	-0.6828225247311905	Alternating exposures requested	N	N
[mm] SIM defocus	0	0.001444936568705701	[s] Primary exposure time	0.000000	0.9
[mm] SIM translation stage pos	-190.132523	-190.1400660498719			
[mm] SIM translation stage offset	0	0.00754346686406393			
[s] Observation start time (MET)	69741071.184000	69739883.044631			
Observation start date	2000-03-18T04:30:07	2000-03-18T04:11:23			
[s] Observation end time (MET)	69749221.184000	69749888.069997			
Observation end date	2000-03-18T06:45:57	2000-03-18T06:58:08			
Read mode	TIMED	TIMED			

## 2.3 Aspect



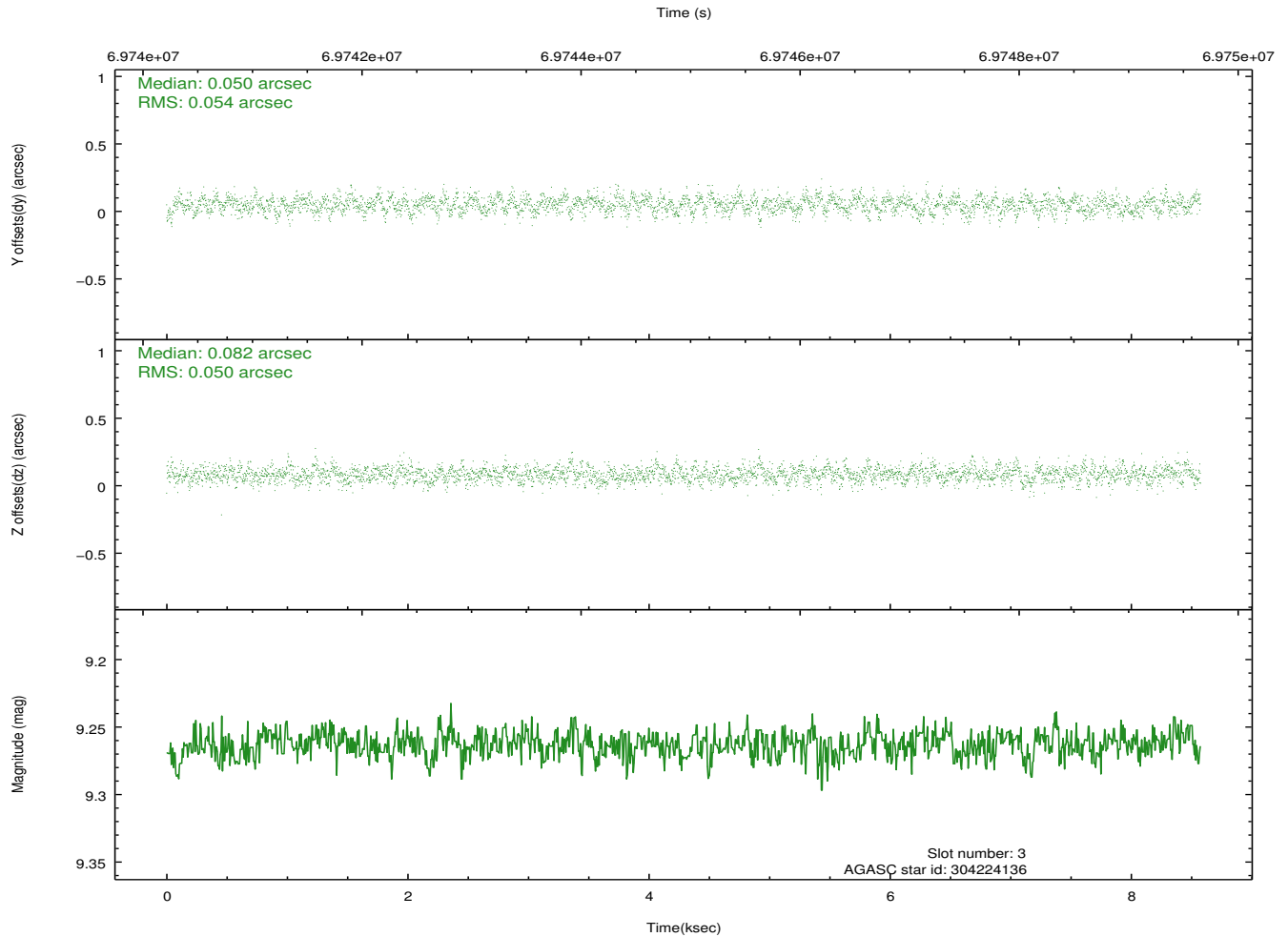
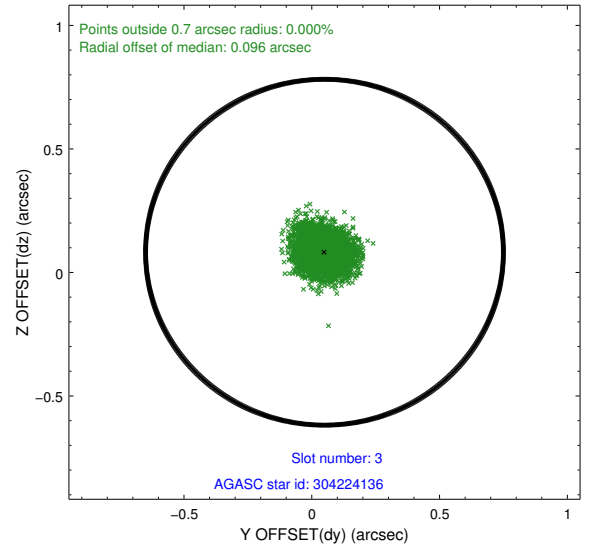
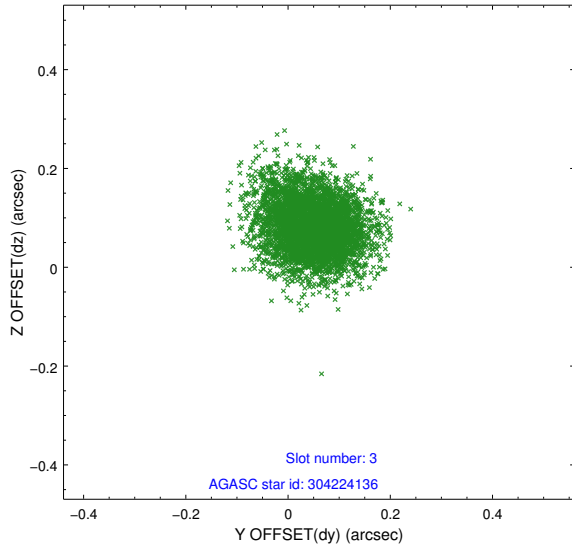


### Slot Statistics

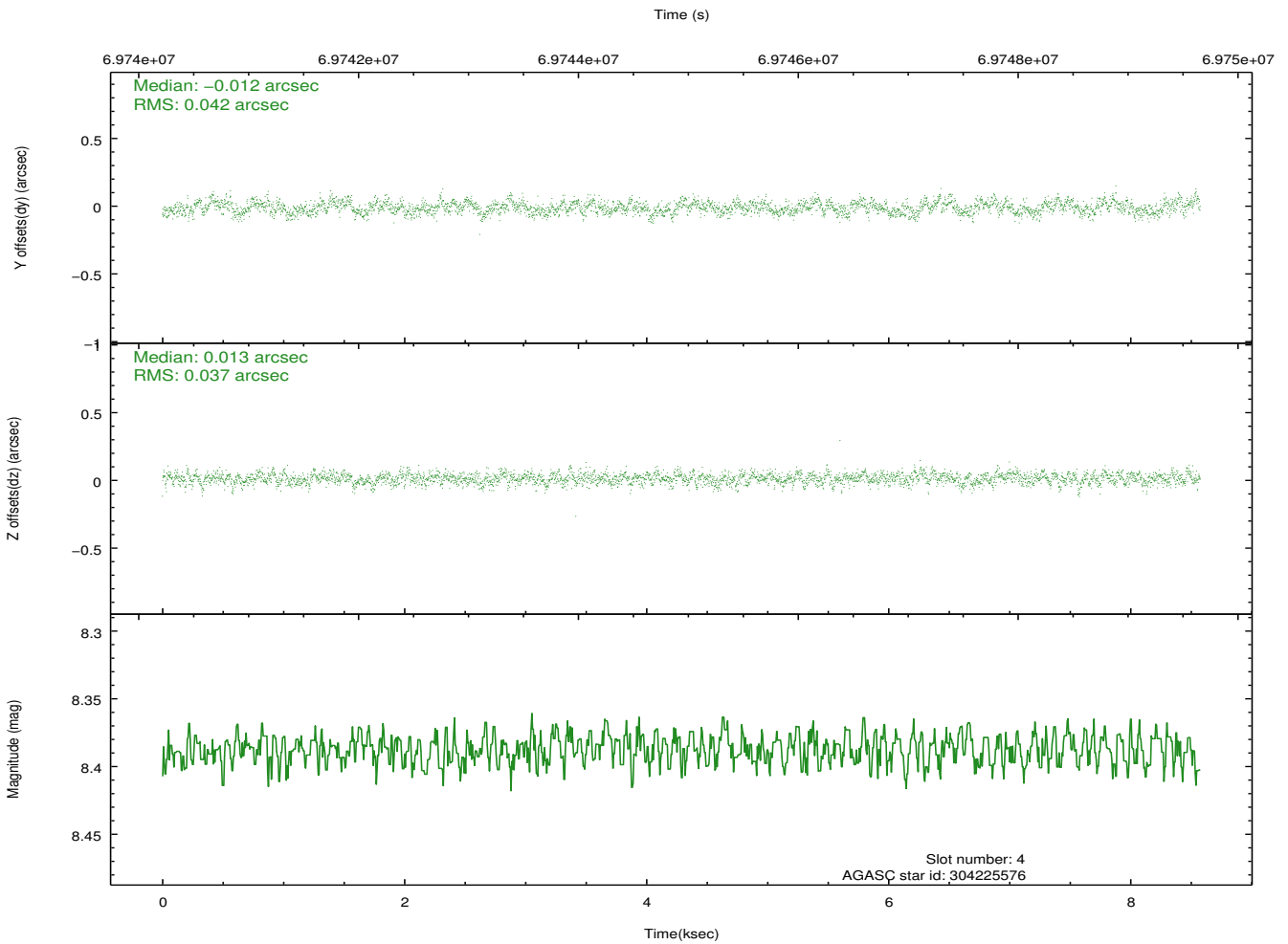
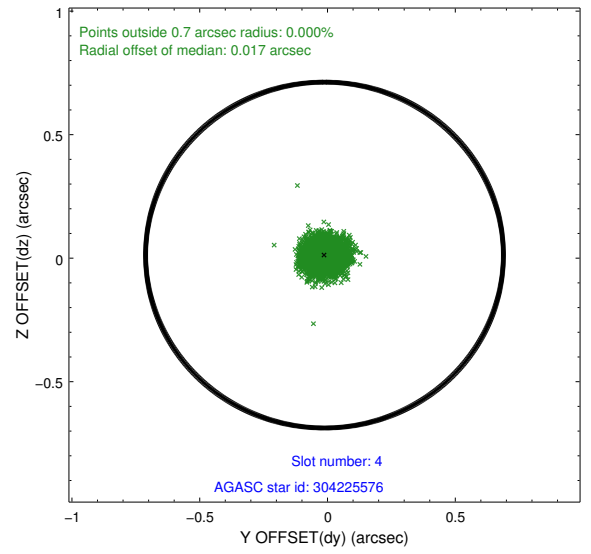
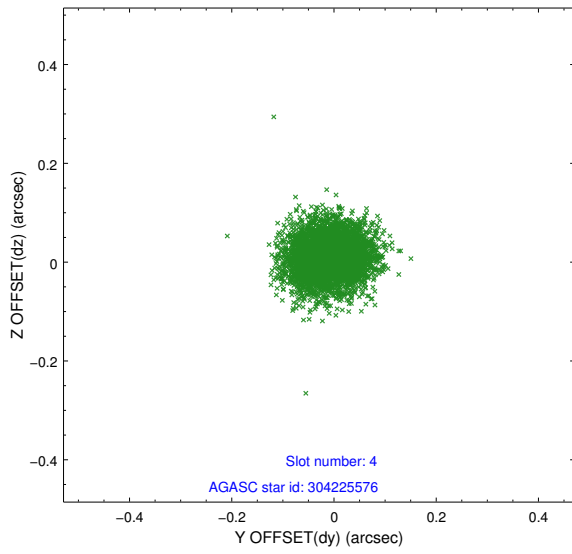
slot	status	id	mag	n_pts	med_dy	med_dz	dr1	dr2	ra	dec	mean_y	mean_z
0	FID	ACIS-S-2	7.11	2092	-0.036	-0.004	0.008	0.013	0.000000	0.000000	-753.67	-1726.20
1	FID	ACIS-S-4	7.21	2092	0.014	0.018	0.006	0.012	0.000000	0.000000	2159.37	181.63
2	FID	ACIS-S-5	7.23	2092	-0.010	-0.005	0.009	0.017	0.000000	0.000000	-1805.65	176.02
3	GUIDE	304224136	9.26	4182	0.050	0.082	0.077	0.129	32.884088	35.737805	1120.06	955.80
4	GUIDE	304225576	8.39	4183	-0.012	0.013	0.059	0.095	32.258833	35.674741	87.33	-568.95
5	GUIDE	303696024	9.74	4182	-0.027	-0.022	0.115	0.189	31.655232	35.489896	-587.20	-2333.26
6	GUIDE	304224808	10.30	4181	0.024	0.075	0.138	0.218	33.251082	36.004445	1095.43	2392.98
7	GUIDE	303695984	7.77	4182	-0.030	-0.138	0.068	0.108	31.969880	35.553798	-146.35	-1490.80

## 2.4 Star Slots

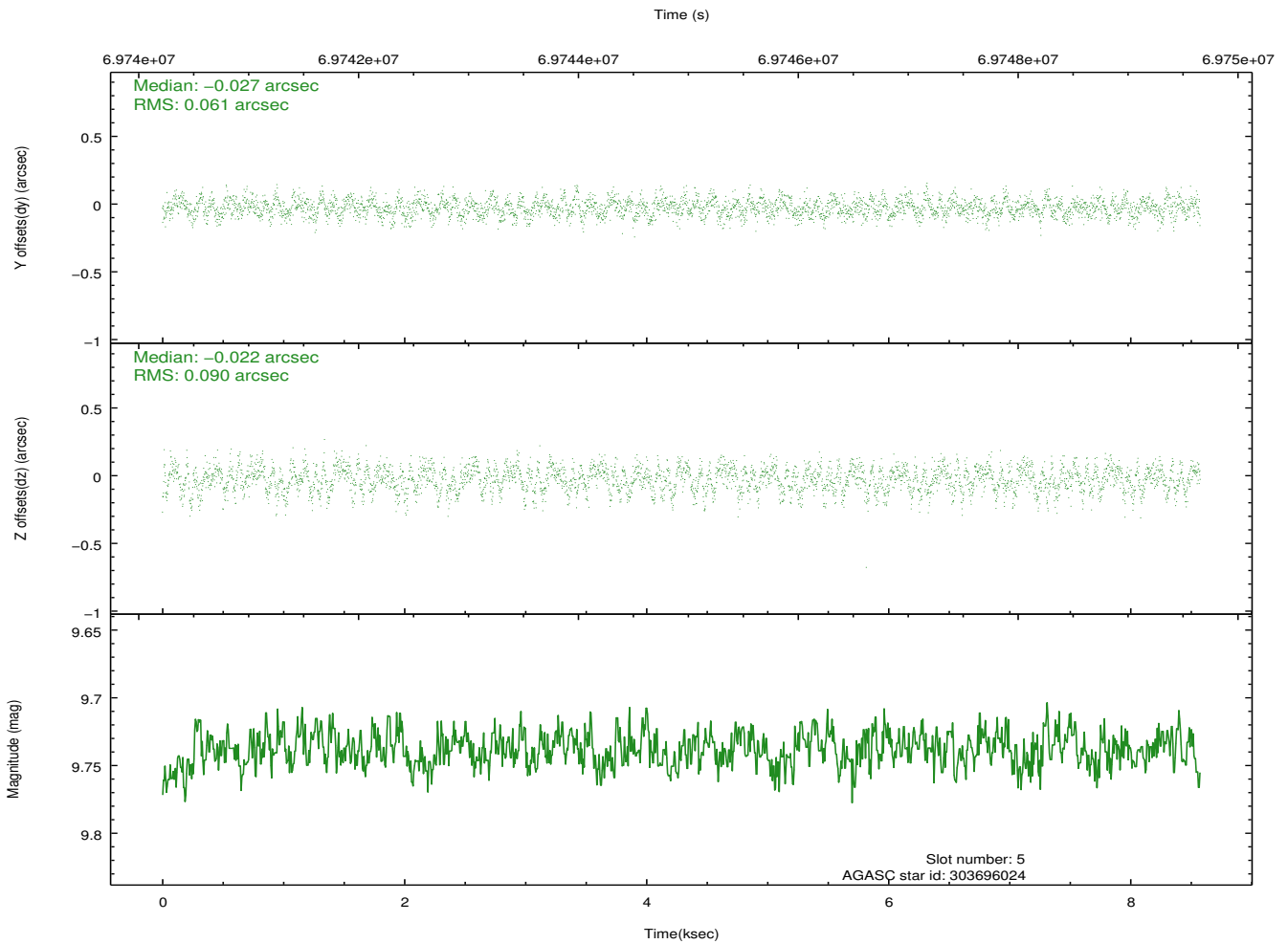
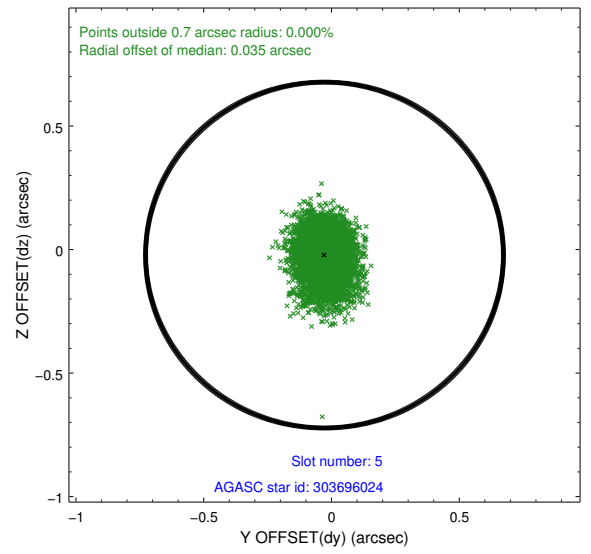
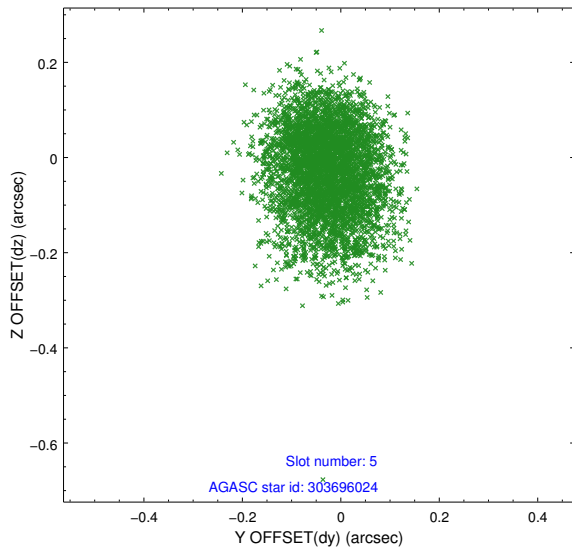
### 2.4.1 Slot 3



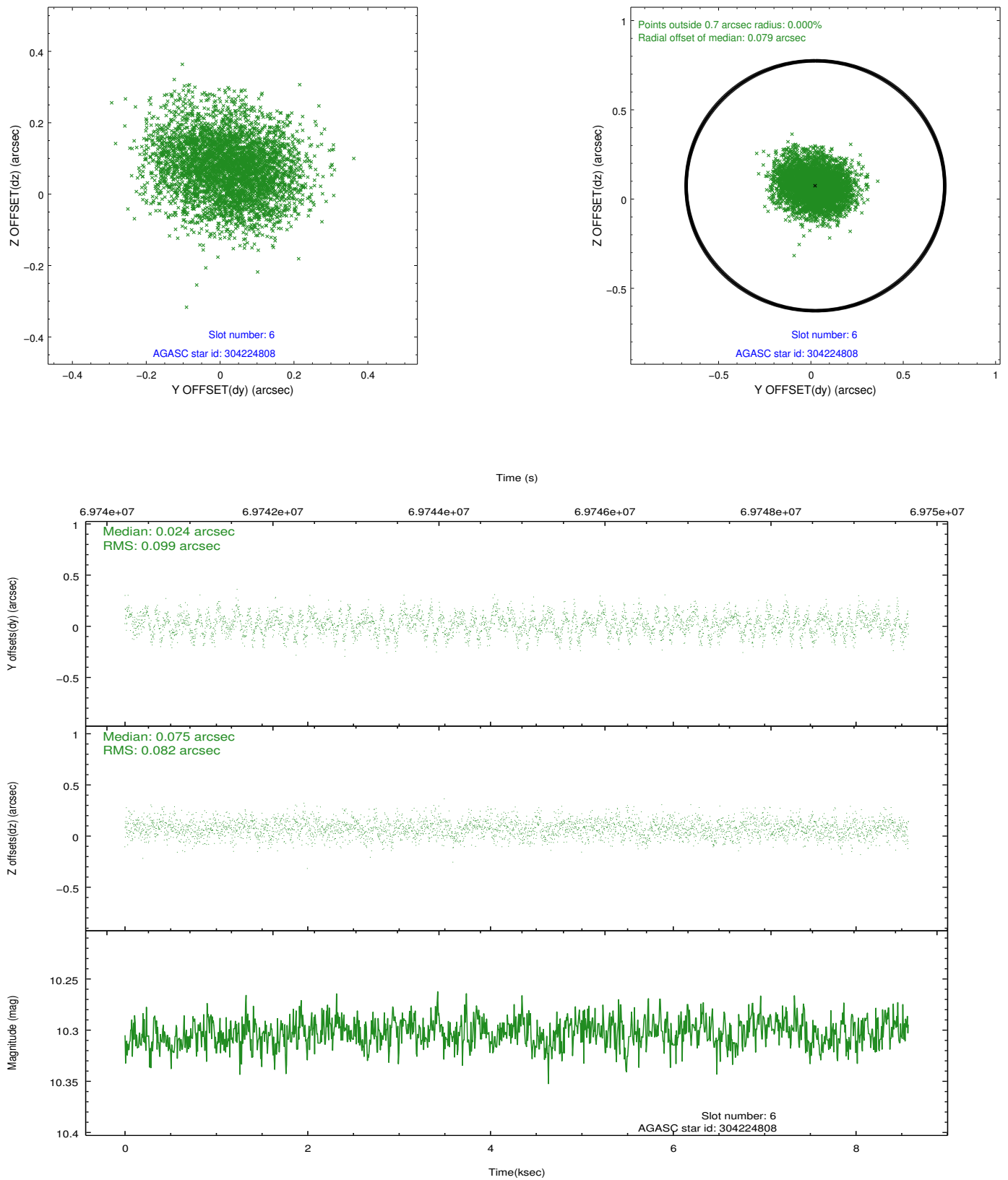
## 2.4.2 Slot 4



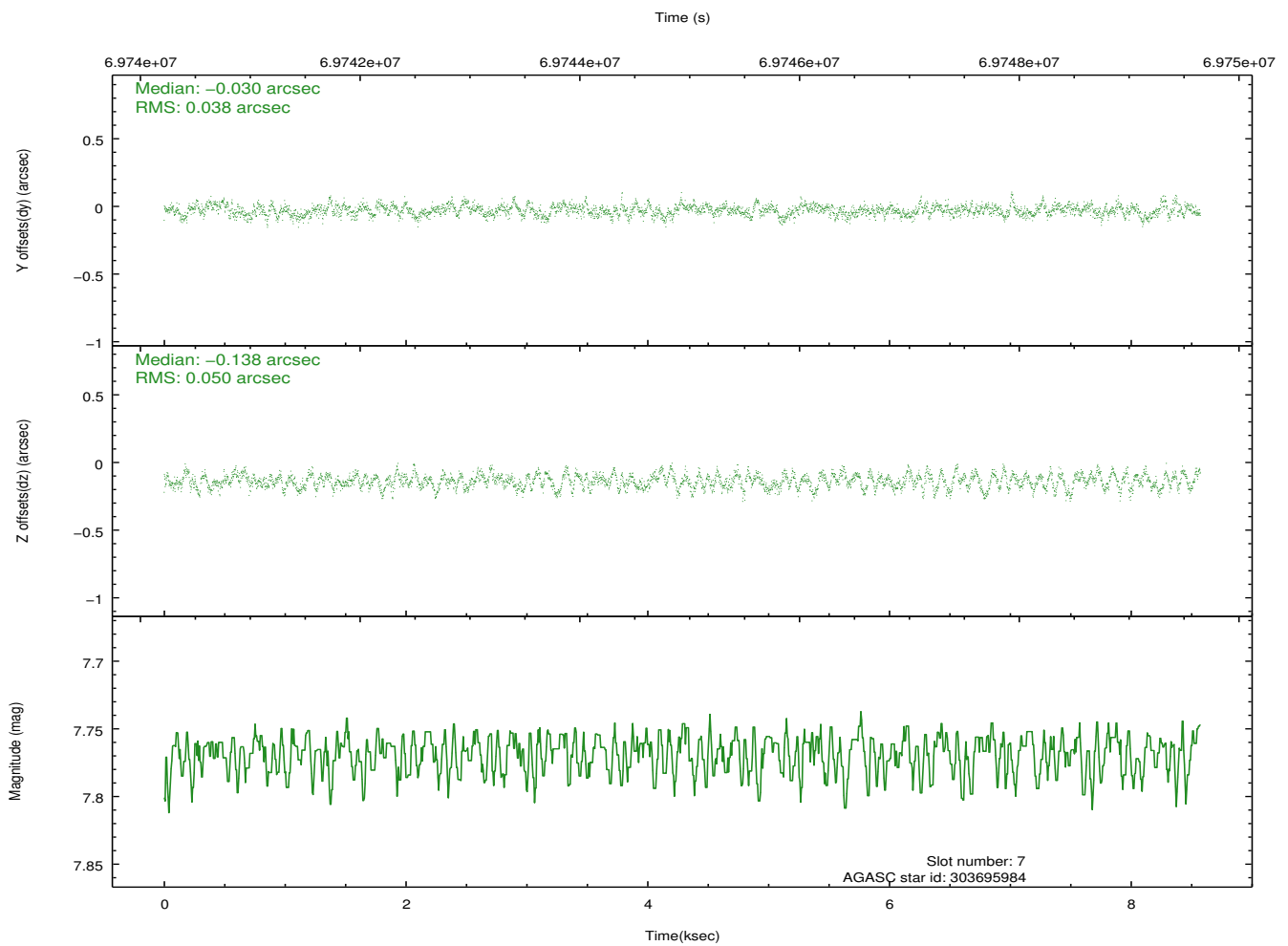
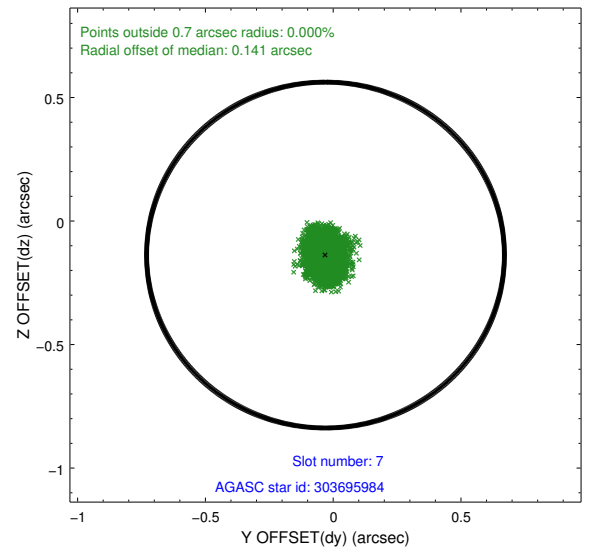
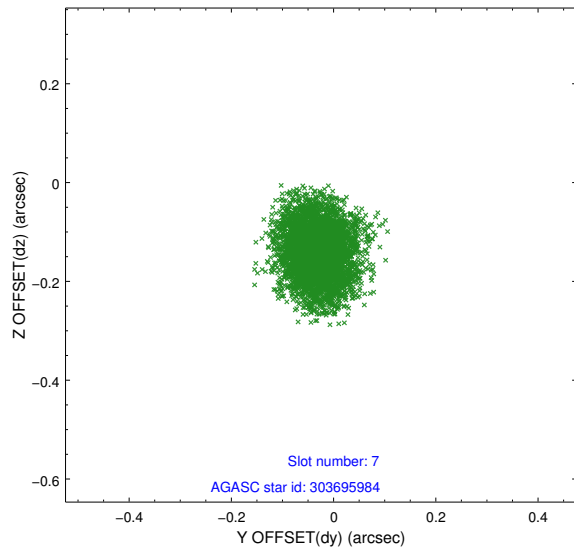
### 2.4.3 Slot 5



## 2.4.4 Slot 6

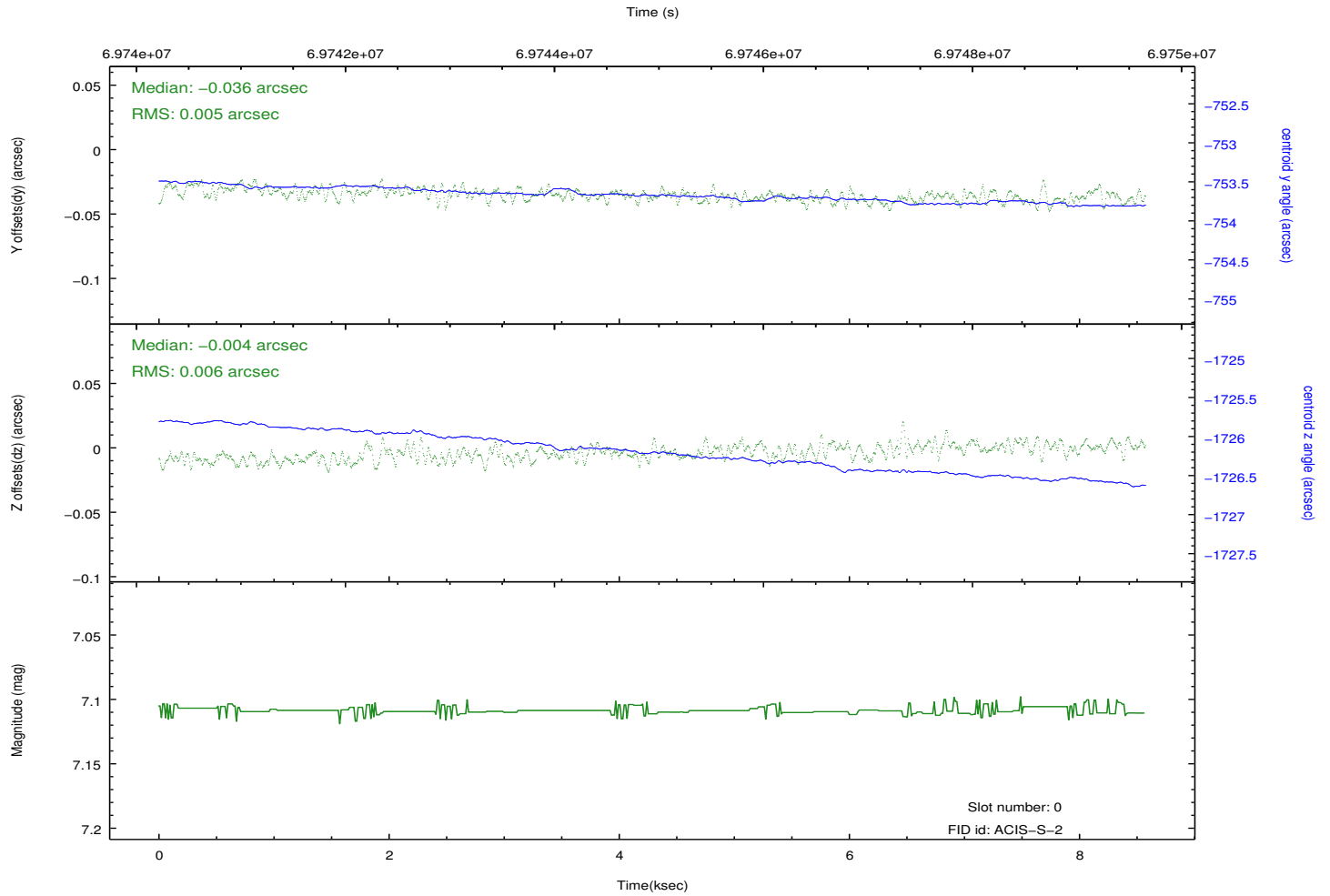
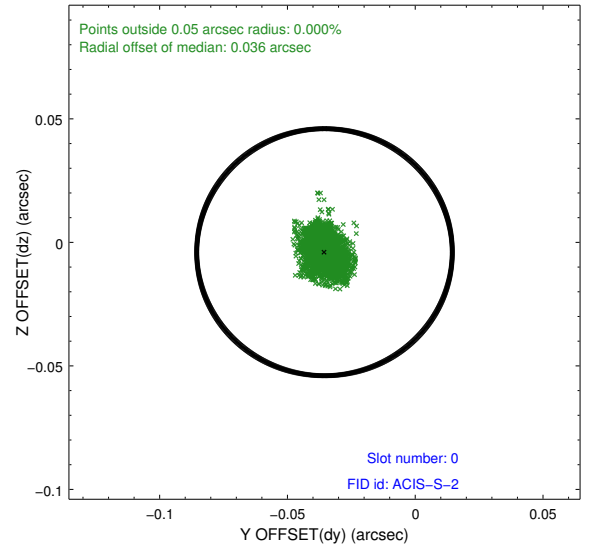
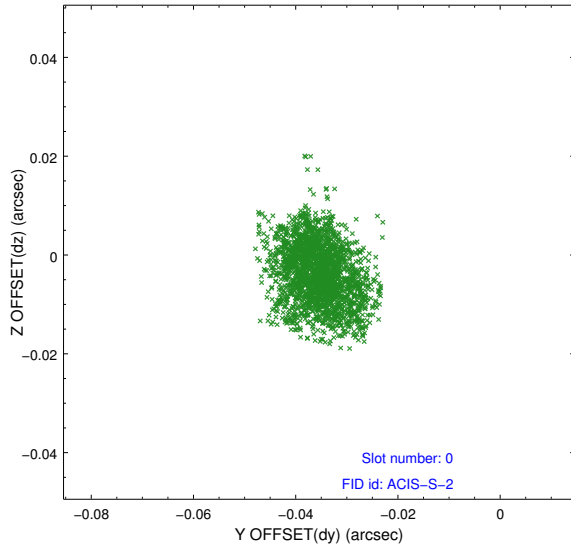


## 2.4.5 Slot 7

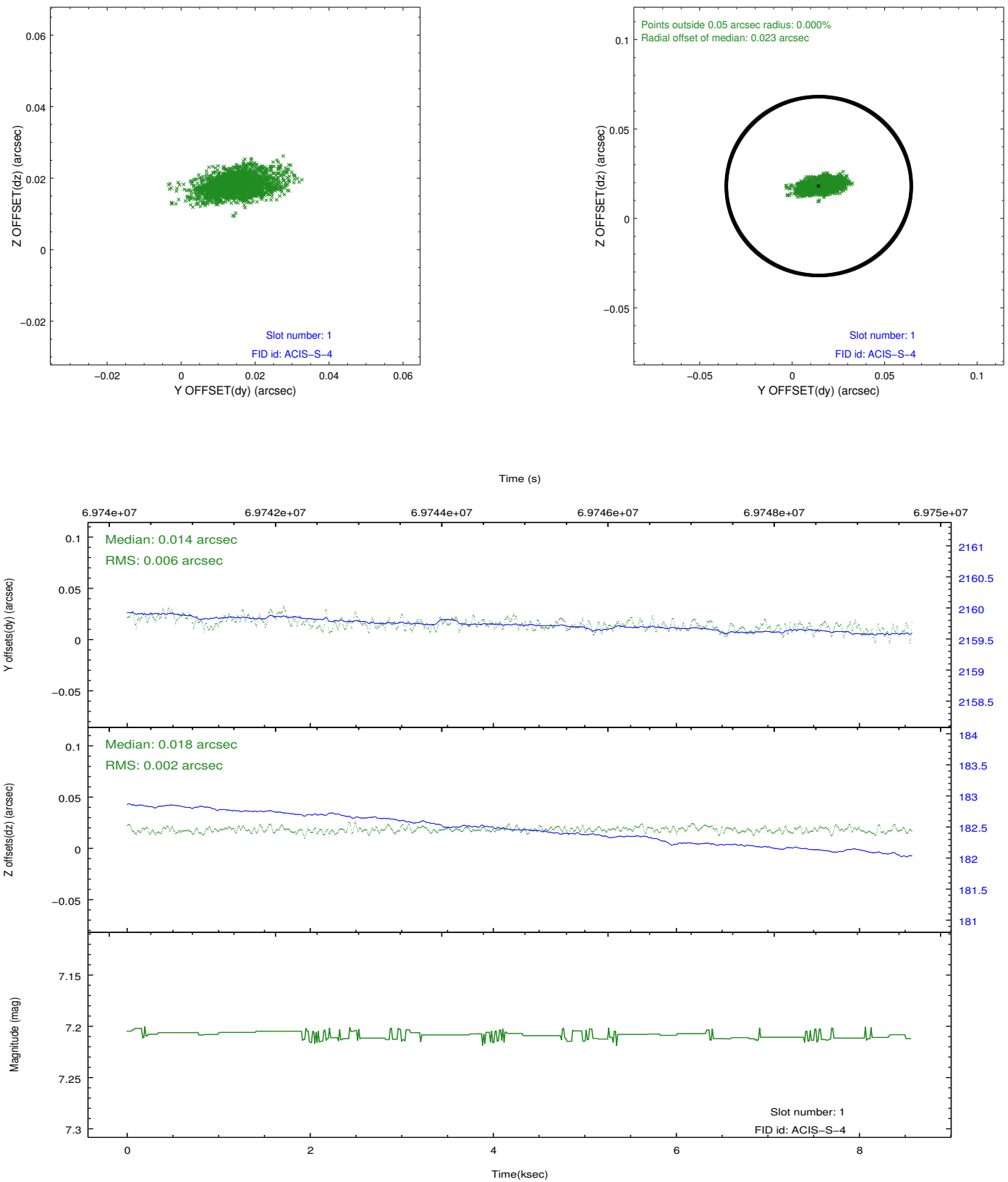


## 2.5 FID Slots

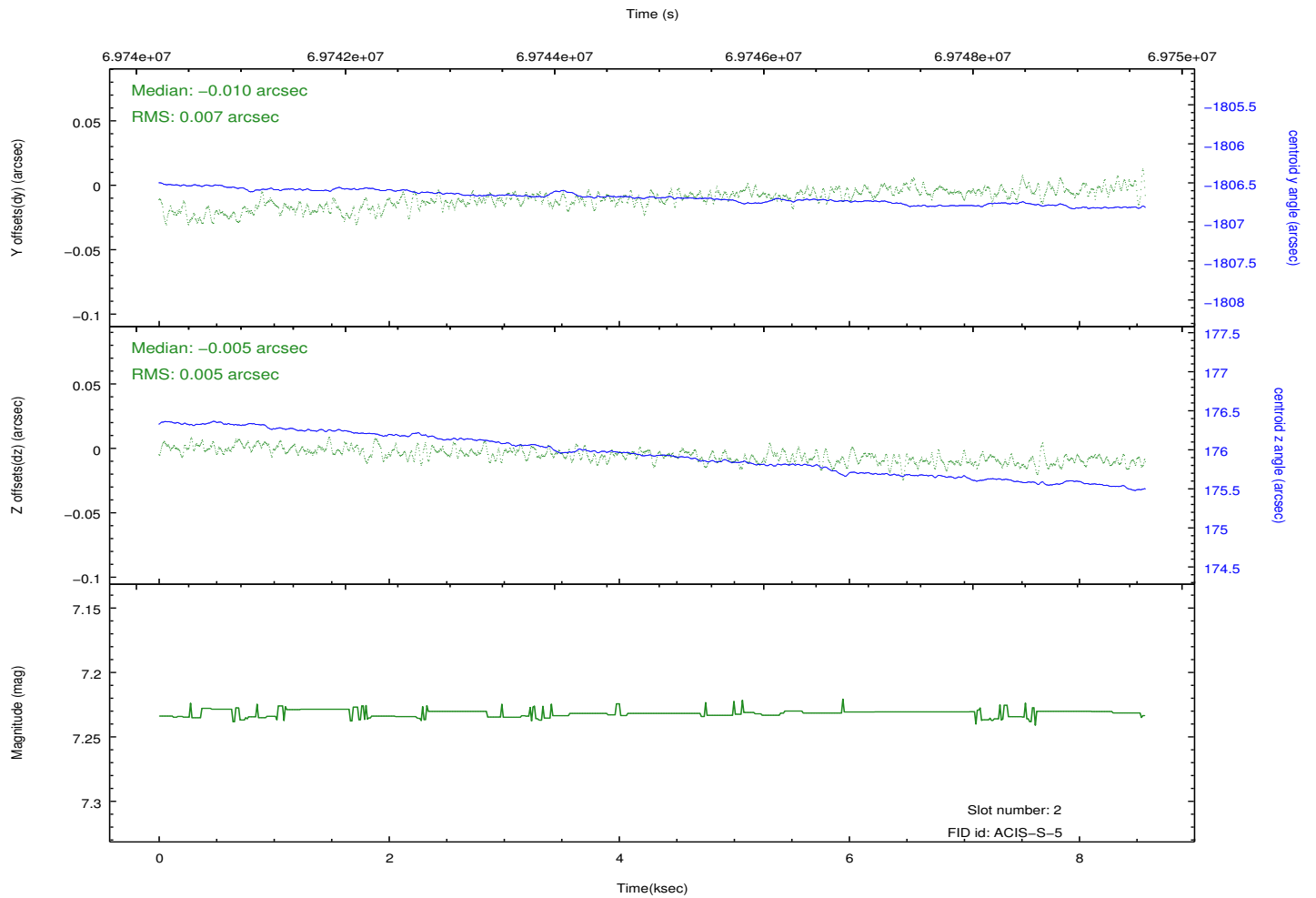
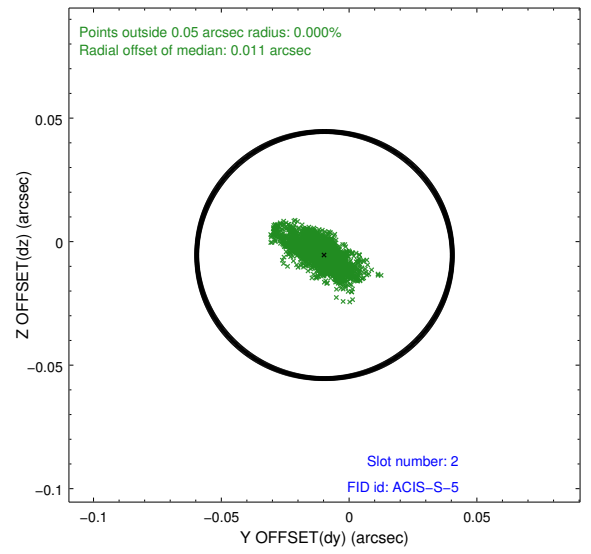
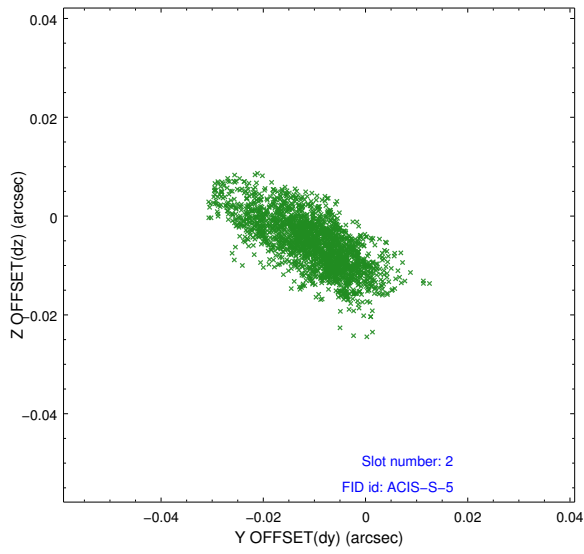
### 2.5.1 Slot 0



## 2.5.2 Slot 1



### 2.5.3 Slot 2



# A Summary

## A.1 Status

V&V Scientist	Jen Lauer
V&V Date (YYYY-MM-DD)	2012.08.27
V&V Edition	1
V&V Disposition and Status	OK
V&V Charge Time	8.572

## A.2 Comments