

V&V Reference Report

L2 ASCDS Version : 8.1.2

Observation 86 - L2 Version 3
Chandra X-Ray Center

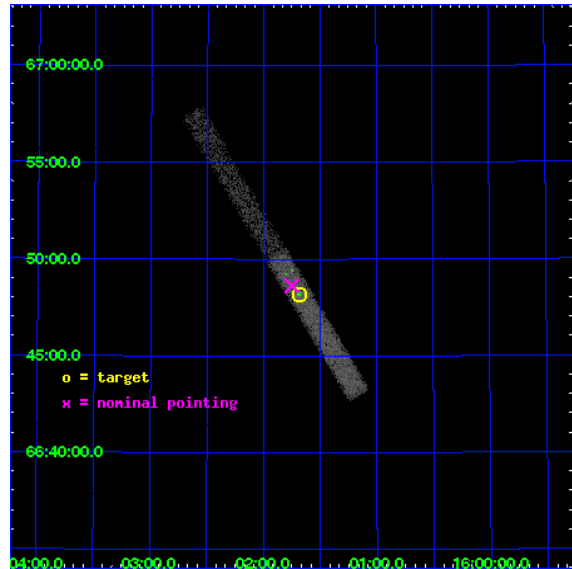
L2 Processing Date : Dec 5 2009

Contents

1	Front	2
2	OBI	3
2.1	OBI	3
2.1.1	Images	3
2.1.2	Bias	3
2.1.3	Parameters	4
2.1.4	Events	4
2.2	Compared Parameters	5
2.3	Aspect	6
2.4	Star Slots	9
2.4.1	Slot 3	9
2.4.2	Slot 4	10
2.4.3	Slot 5	11
2.4.4	Slot 6	12
2.4.5	Slot 7	13
2.5	FID Slots	14
2.5.1	Slot 0	14
2.5.2	Slot 1	15
2.5.3	Slot 2	16
3	Point Sources	17
A	Summary	18
A.1	Status	18
A.2	Comments	18

1 Front

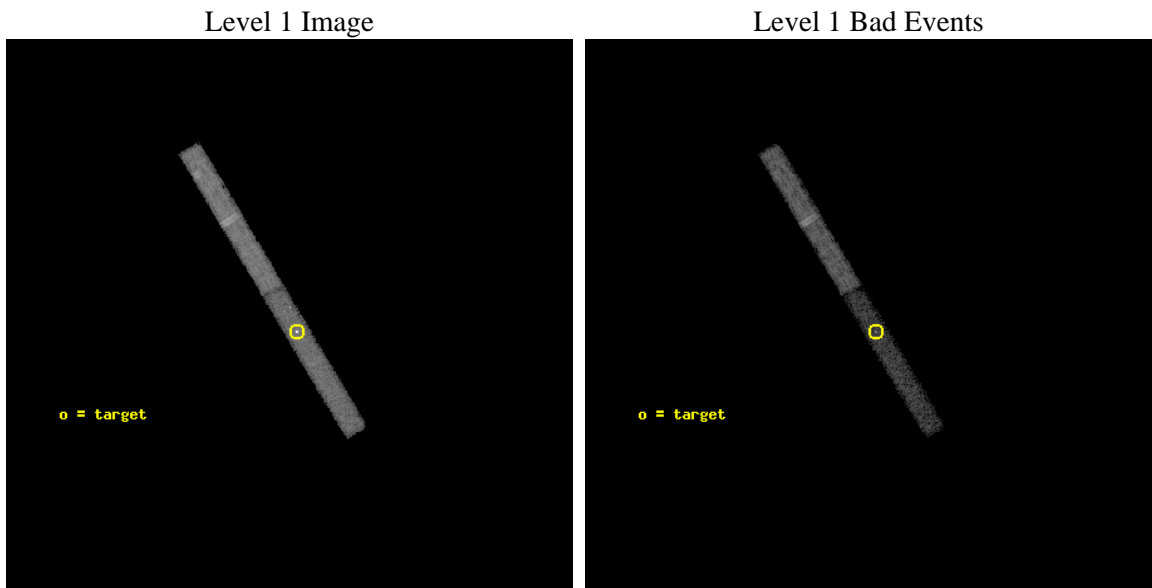
seq_num	300011	Sequence number
obs_id	86	Observation id
title	SUPER-SOFT X-RAY SOURCES	Proposal title
observer	Dr Steve Murray	Principal investigator
object	AG DRA	Source name
dtcycle	0	
cycle	P	events from which exps? Prim/Second/Both
ra_targ	240.420417	Observer's specified target RA
dec_targ	66.802778	Observer's specified target Dec
ra_nom	240.43759166498	Nominal RA
dec_nom	66.810386723119	Nominal Dec
roll_nom	59.095101737912	Nominal Roll
revision	3	Processing version of data
ontime	19856.0	Sum of GTIs [s]
livetime	18349.844743457	Livetime [s]
ontime6	19856.0	Sum of GTIs [s]
ontime7	19856.0	Sum of GTIs [s]
l2events	16474	Number of level 2 events



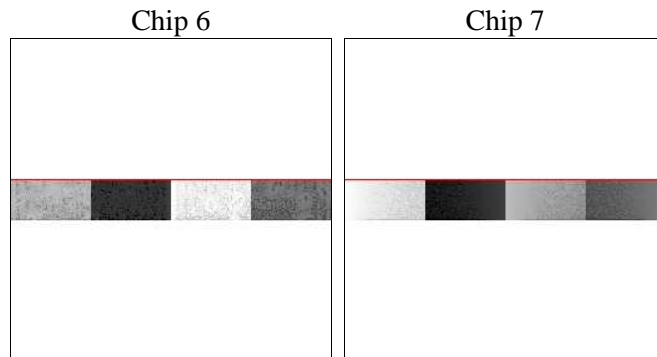
2 OBI

2.1 OBI

2.1.1 Images



2.1.2 Bias



2.1.3 Parameters

obi_num	1	Obi number	sched_exp_time	20000.000000	Scheduled observation exposure time
ascdsver	8.1.2	ASCDS version number	ontime	19856.0	Sum of GTIs [s]
caldbver	4.1.4	 	ontime6	19856.0	Sum of GTIs [s]
date	2009-12-05T06:34:30	Date and time of file creation	ontime7	19856.0	Sum of GTIs [s]
revision	3	Processing version of data	ll events	63602	Number of level 1 events

2.1.4 Events

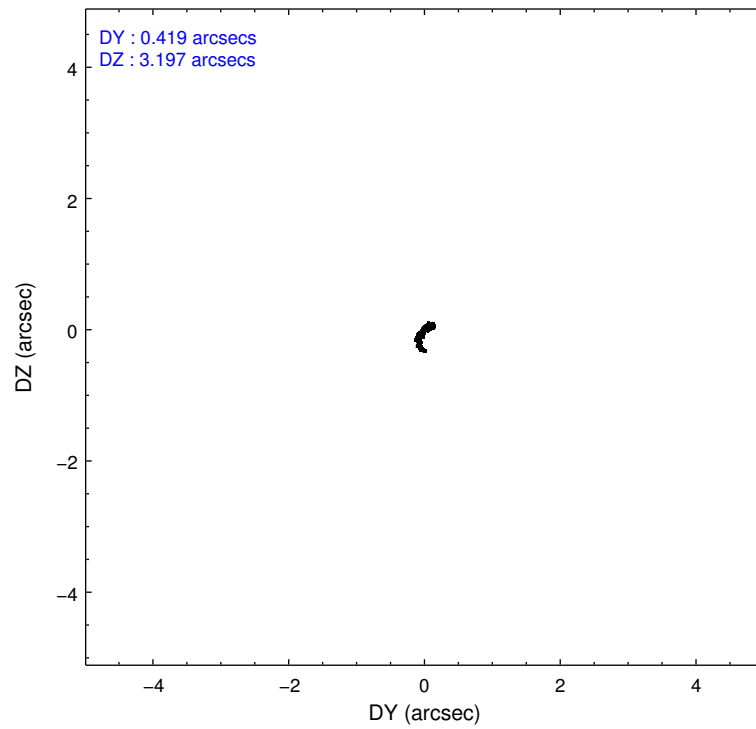
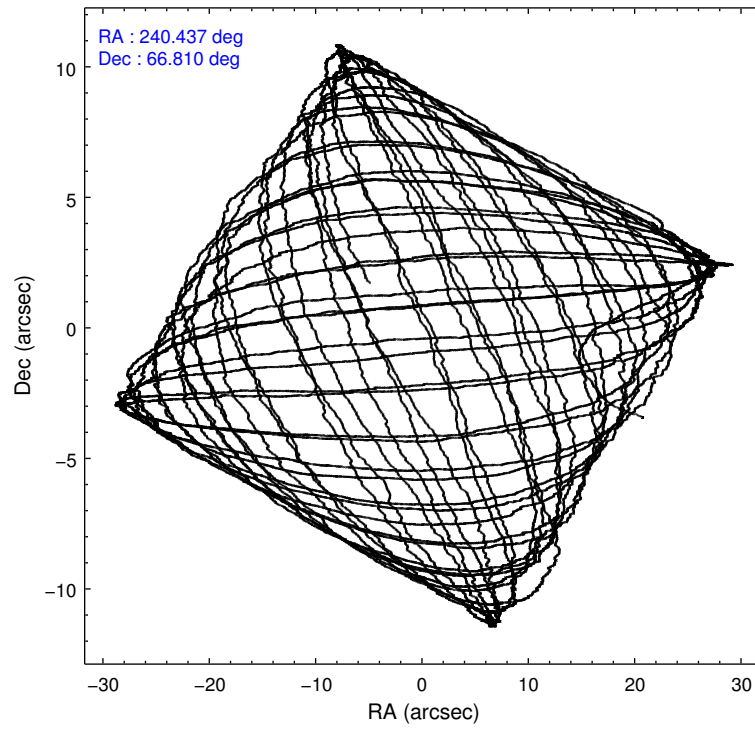
	ccd 6	ccd 7
level 1 events	35543	28059
rejected events	32256	13303
rejected %	90%	47%

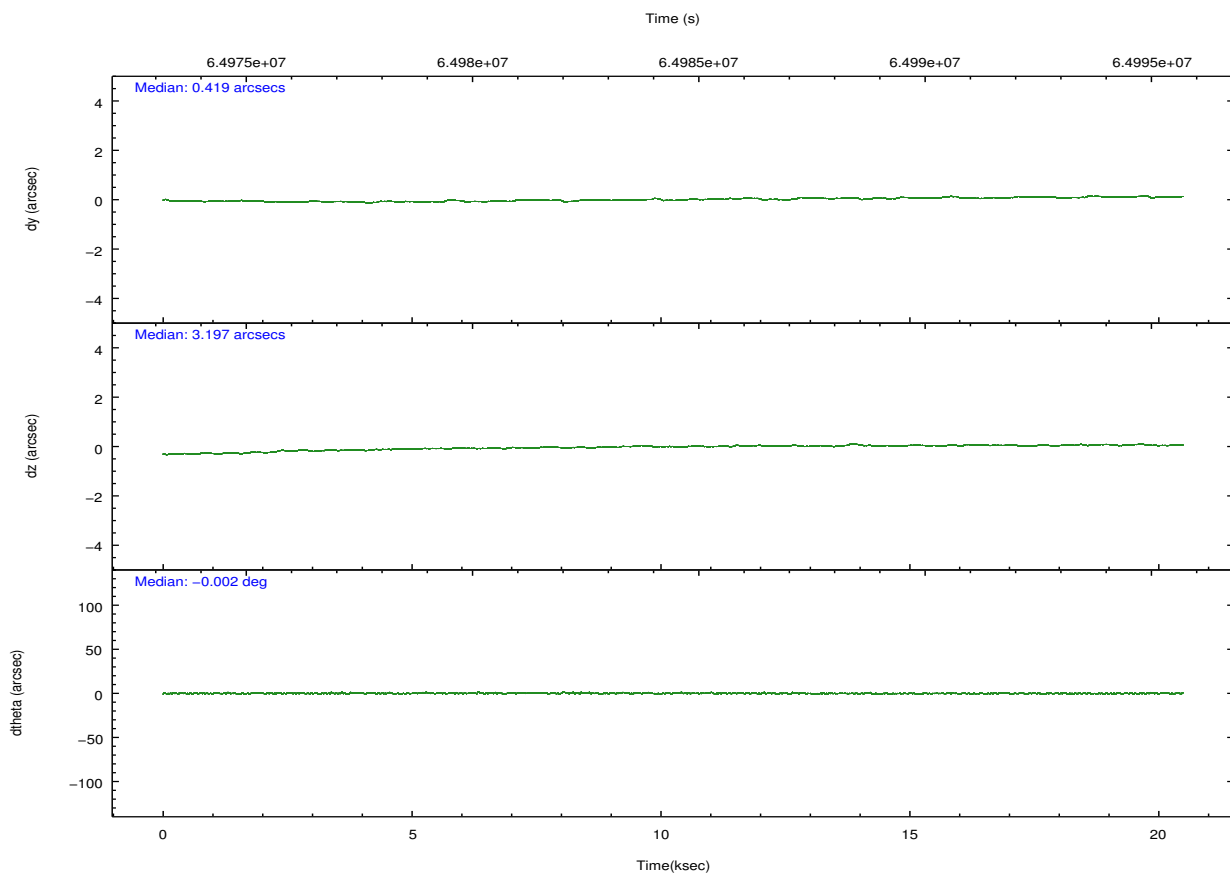
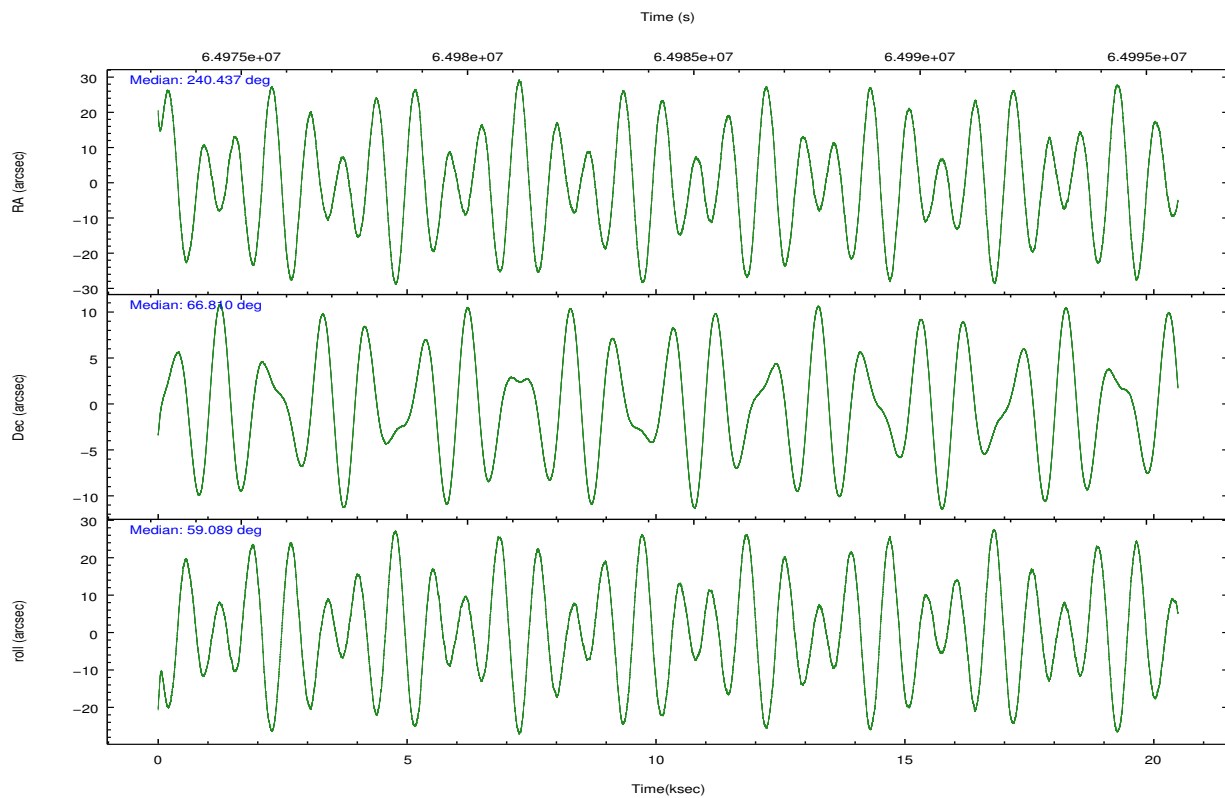
	ccd 6	ccd 7
grade 0 events	636	5225
	1%	18%
grade 1 events	39	90
	0%	0%
grade 2 events	969	2201
	2%	7%
grade 3 events	516	1184
	1%	4%
grade 4 events	502	967
	1%	3%
grade 5 events	359	1305
	1%	4%
grade 6 events	664	5180
	1%	18%
grade 7 events	31858	11907
	89%	42%

2.2 Compared Parameters

Parameter	Planned	Actual	Parameter	Planned	Actual
Instrument	ACIS	ACIS	Obspar format version number	6	6
Detector	ACIS-67	ACIS-67	Obspar file type	PREDICTED	ACTUAL
Grating	NONE	NONE	Obspar update status	NONE	UPDATED
Data mode	VFAINT	VFAINT	Number of optional ACIS chips dropped	0	0
Observation mode	POINTING	POINTING	On-chip summing requested	N	N
Pointing RA	240.436384	240.4375916649813	Subarray requested	CUSTOM	1/8
Pointing Dec	66.782842	66.8103867231187	Subarray start row	448	448
Pointing Roll	58.939591	59.09510173791236	Subarray row count	128	128
SIM focus pos (mm)	-0.684267	-0.6828225247311905	Alternating exposures requested	N	N
SIM defocus (mm)	0	0.001444936568705701	Primary exposure time	0.000000	0.5
SIM translation stage pos (mm)	-190.132523	-190.1400660498719			
SIM translation stage offset (mm)	0	0.00754346686406393			
Observation start time	64974672.184000	64973358.629421			
Observation start date	2000-01-23T00:30:08	2000-01-23T00:09:18			
Observation end time	64994672.184000	64995193.692714			
Observation end date	2000-01-23T06:03:28	2000-01-23T06:13:13			
Read mode	TIMED	TIMED			

2.3 Aspect



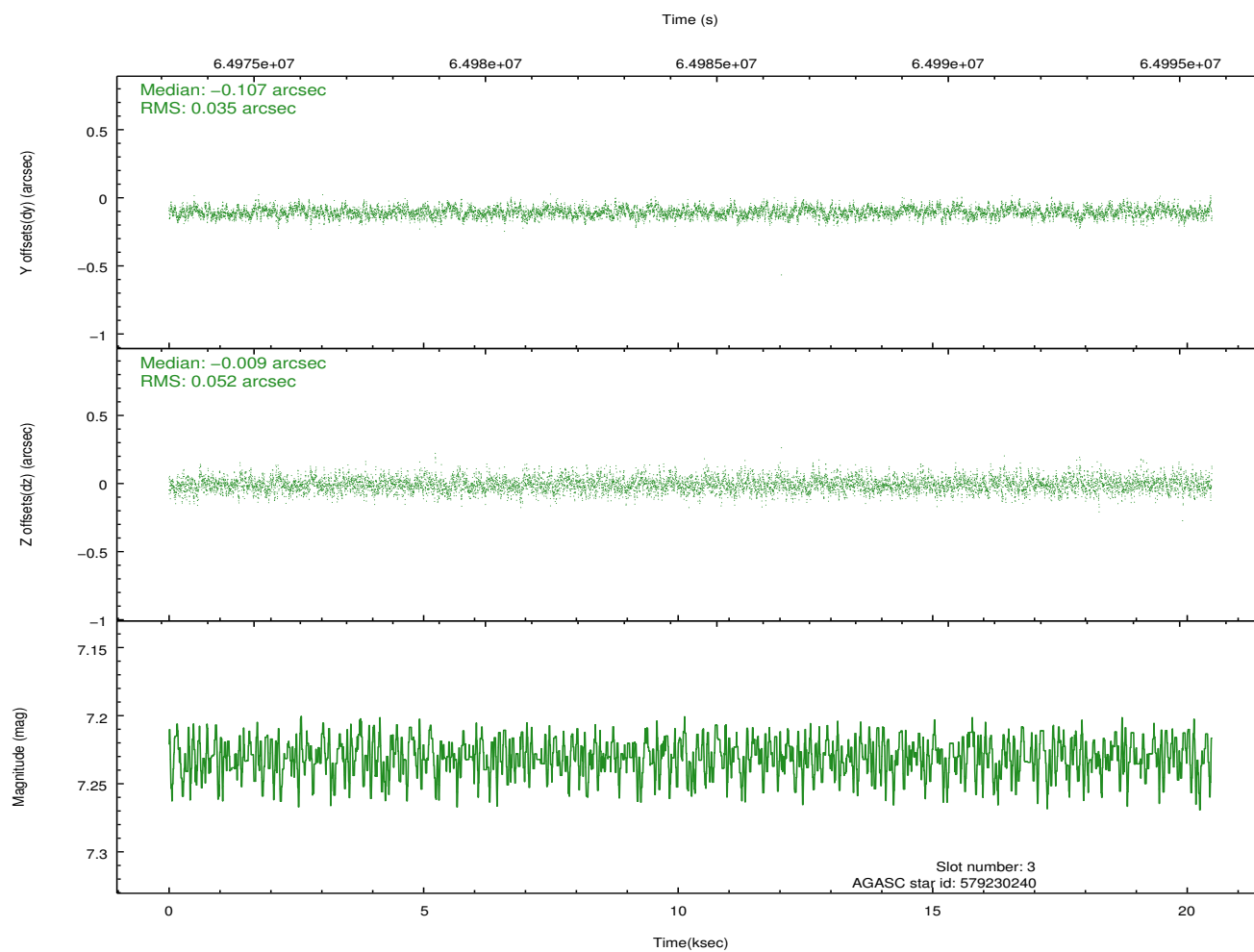
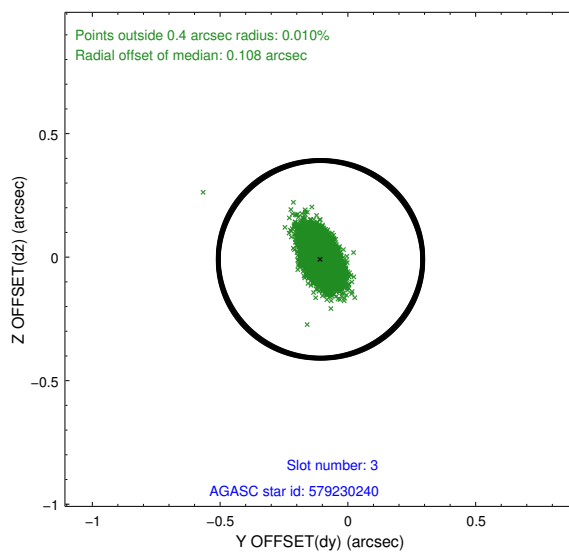
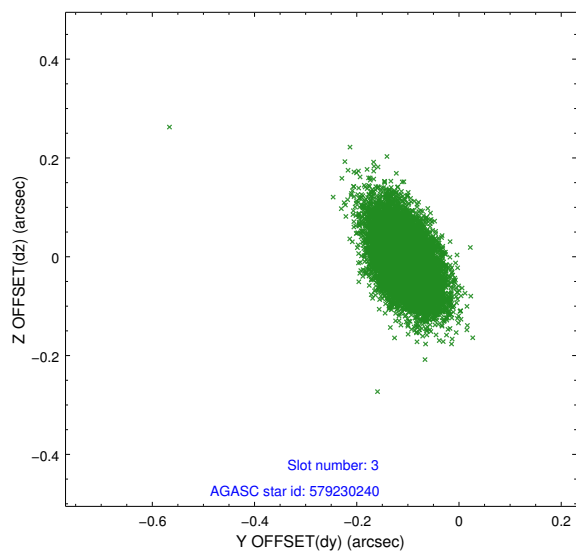


Slot Statistics

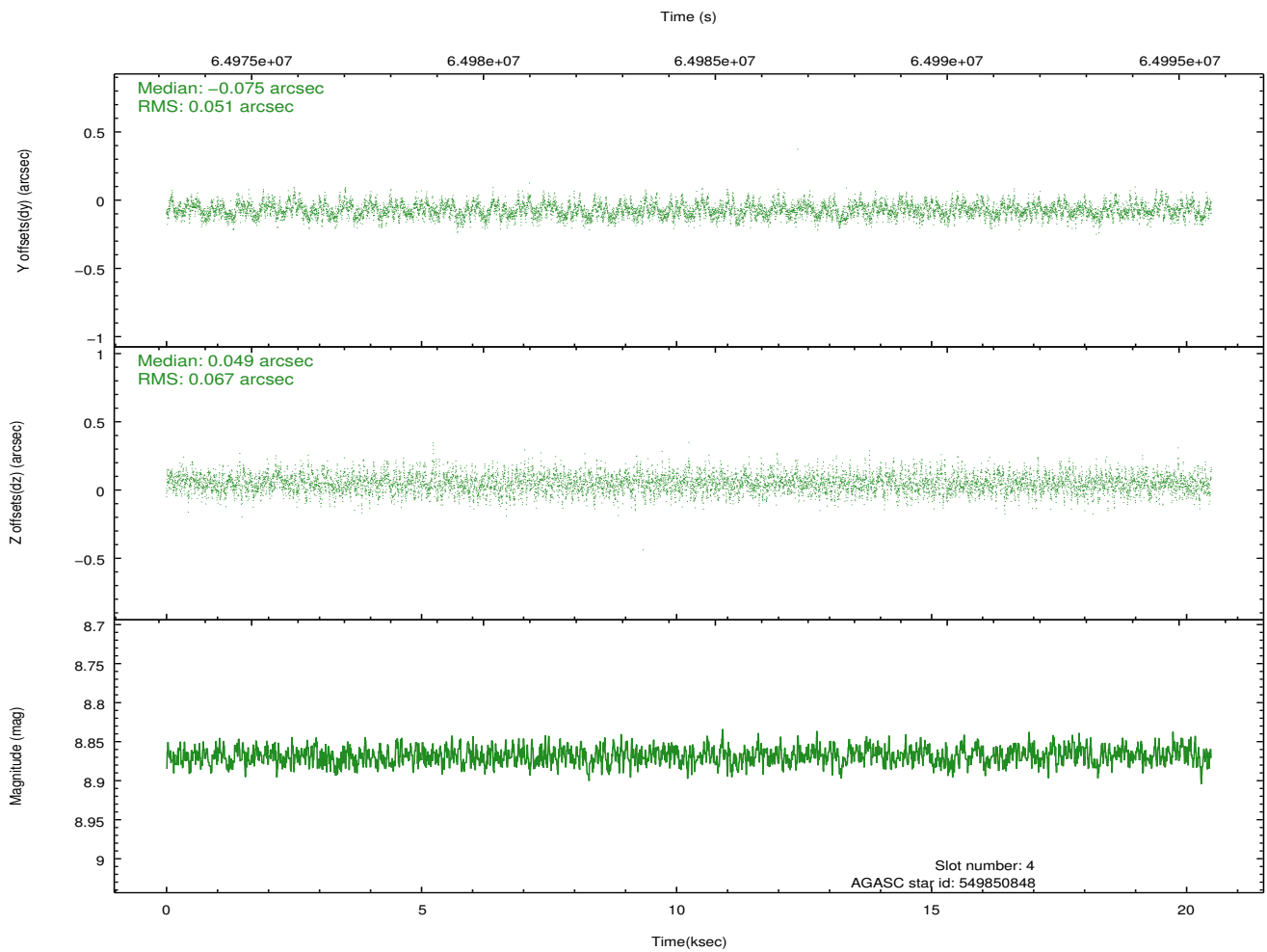
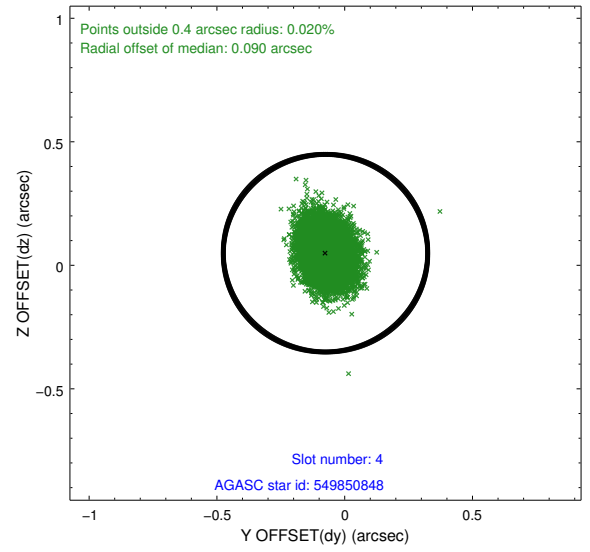
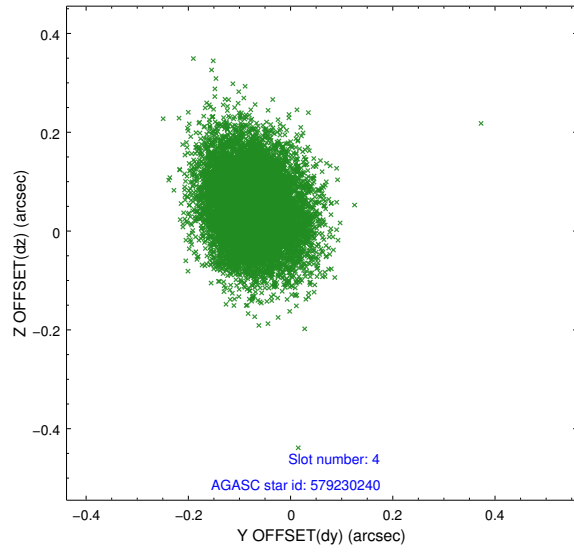
slot	status	id	mag	n_pts	med_dy	med_dz	dr1	dr2	ra	dec	mean_y	mean_z
0	FID	ACIS-S-3	7.35	4997	0.021	-0.074	0.008	0.014	0.000000	0.000000	60.17	-1853.35
1	FID	ACIS-S-5	7.24	4996	-0.056	0.037	0.006	0.010	0.000000	0.000000	-1806.08	177.64
2	FID	ACIS-S-6	7.36	4995	0.012	0.047	0.007	0.014	0.000000	0.000000	408.46	821.72
3	GUIDE	579230240	7.23	9992	-0.107	-0.009	0.064	0.115	240.088025	67.627408	2359.55	1978.16
4	GUIDE	549850848	8.87	9992	-0.075	0.049	0.088	0.147	241.459219	66.322658	-645.00	-2115.50
5	GUIDE	549848248	9.31	9984	0.123	0.008	0.085	0.143	241.373256	66.988148	1322.46	-743.51
6	GUIDE	549850840	9.36	9990	-0.021	-0.036	0.090	0.151	241.038865	66.468628	-517.91	-1323.93
7	GUIDE	548937184	9.92	9984	0.083	-0.018	0.136	0.216	238.771821	66.565432	-1872.43	1653.01

2.4 Star Slots

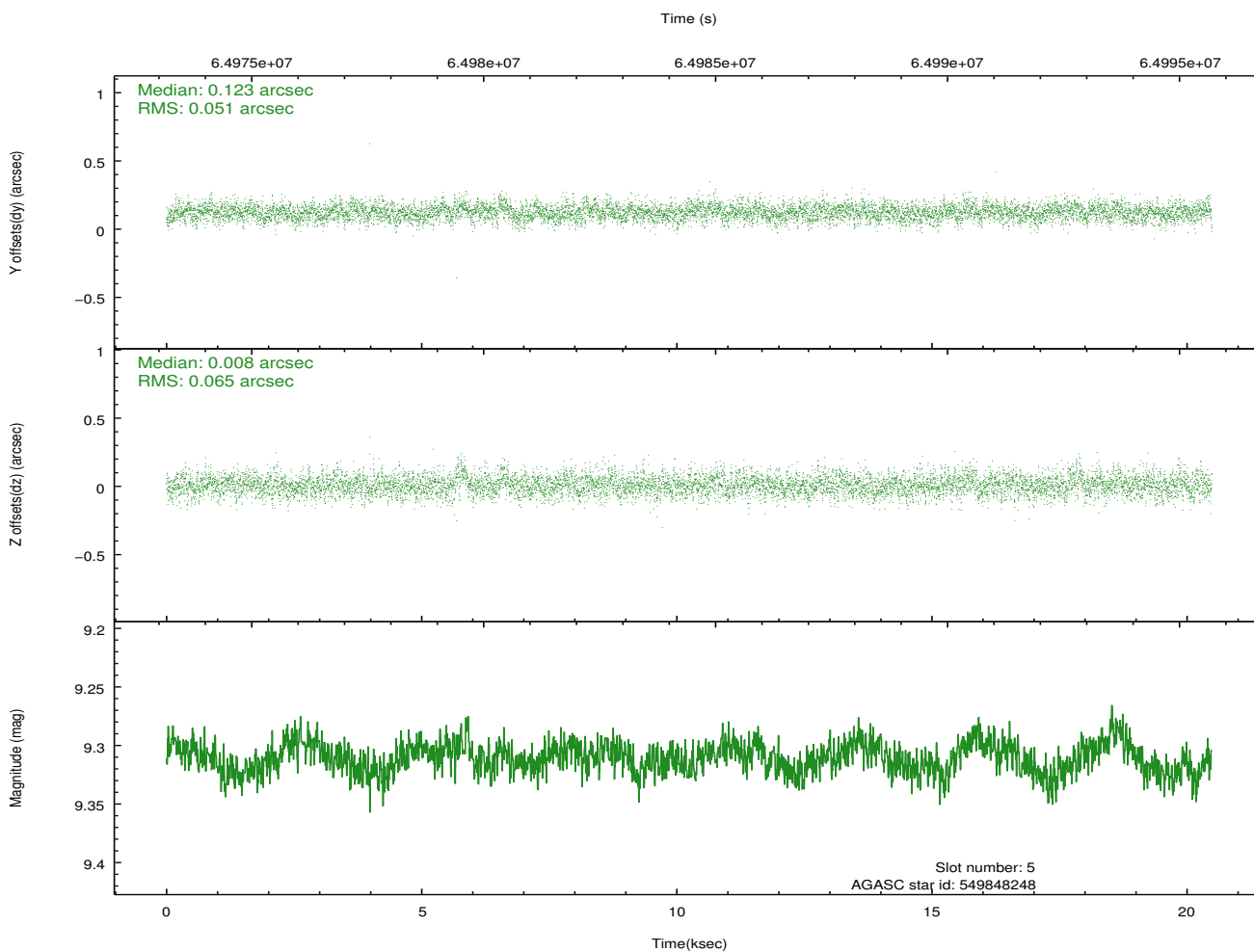
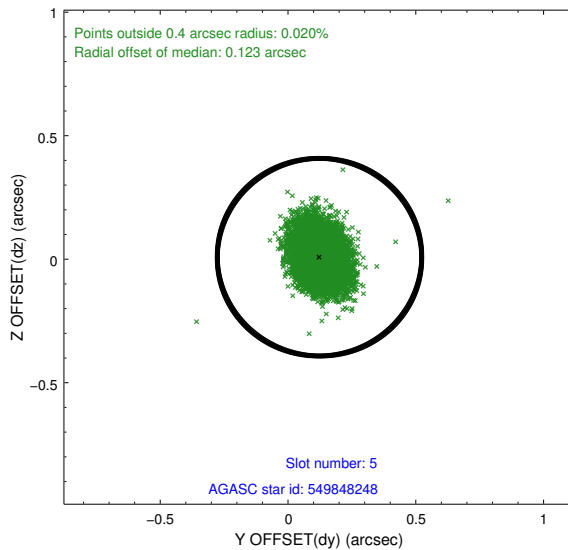
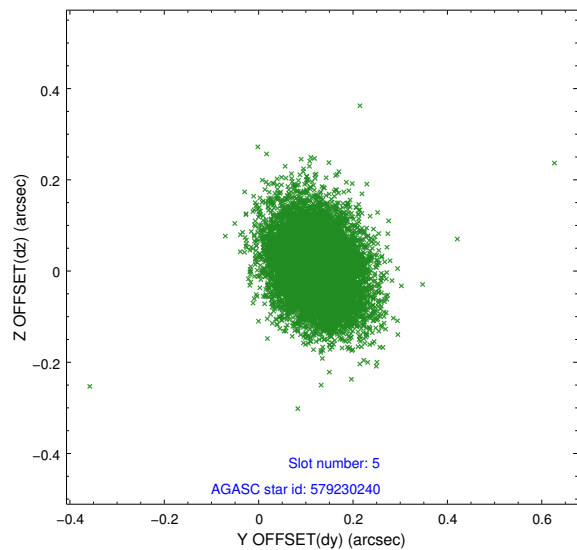
2.4.1 Slot 3



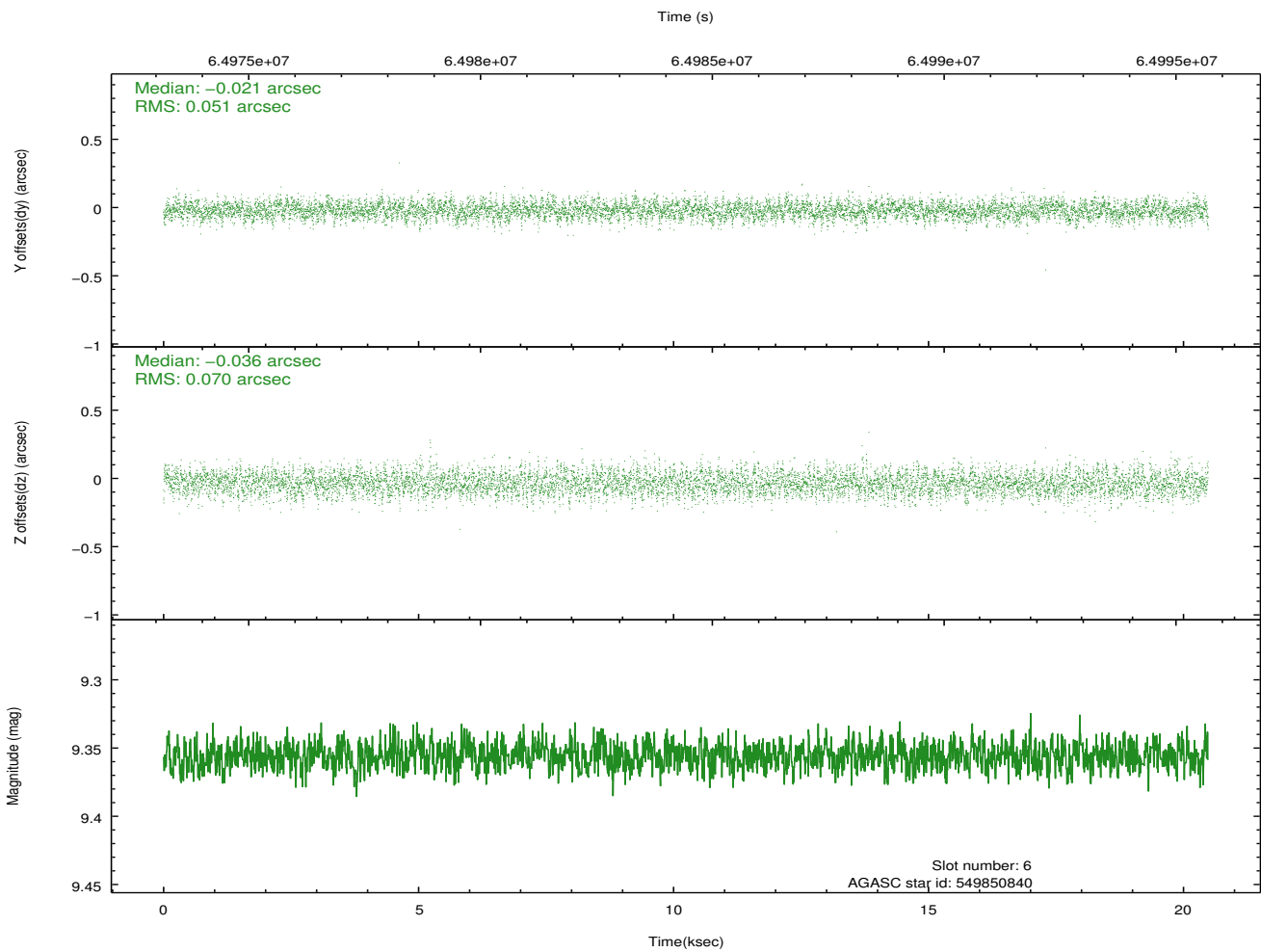
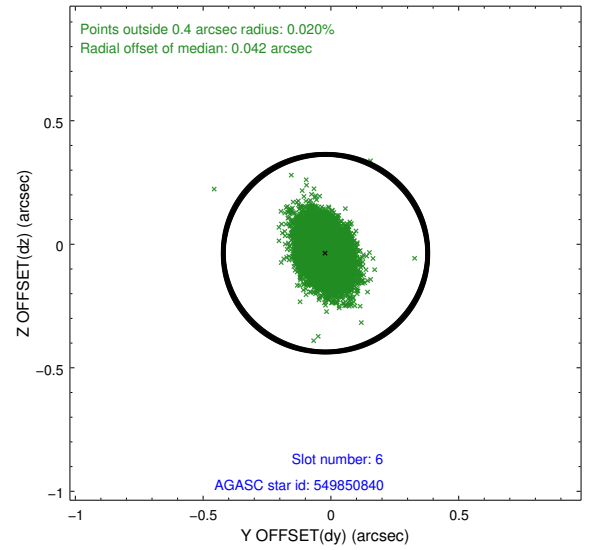
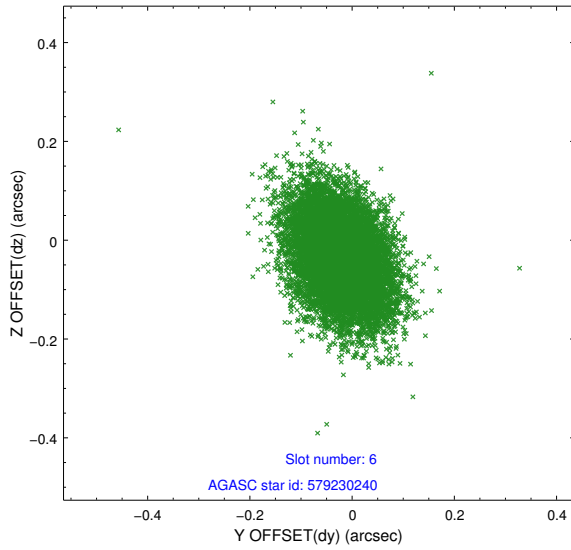
2.4.2 Slot 4



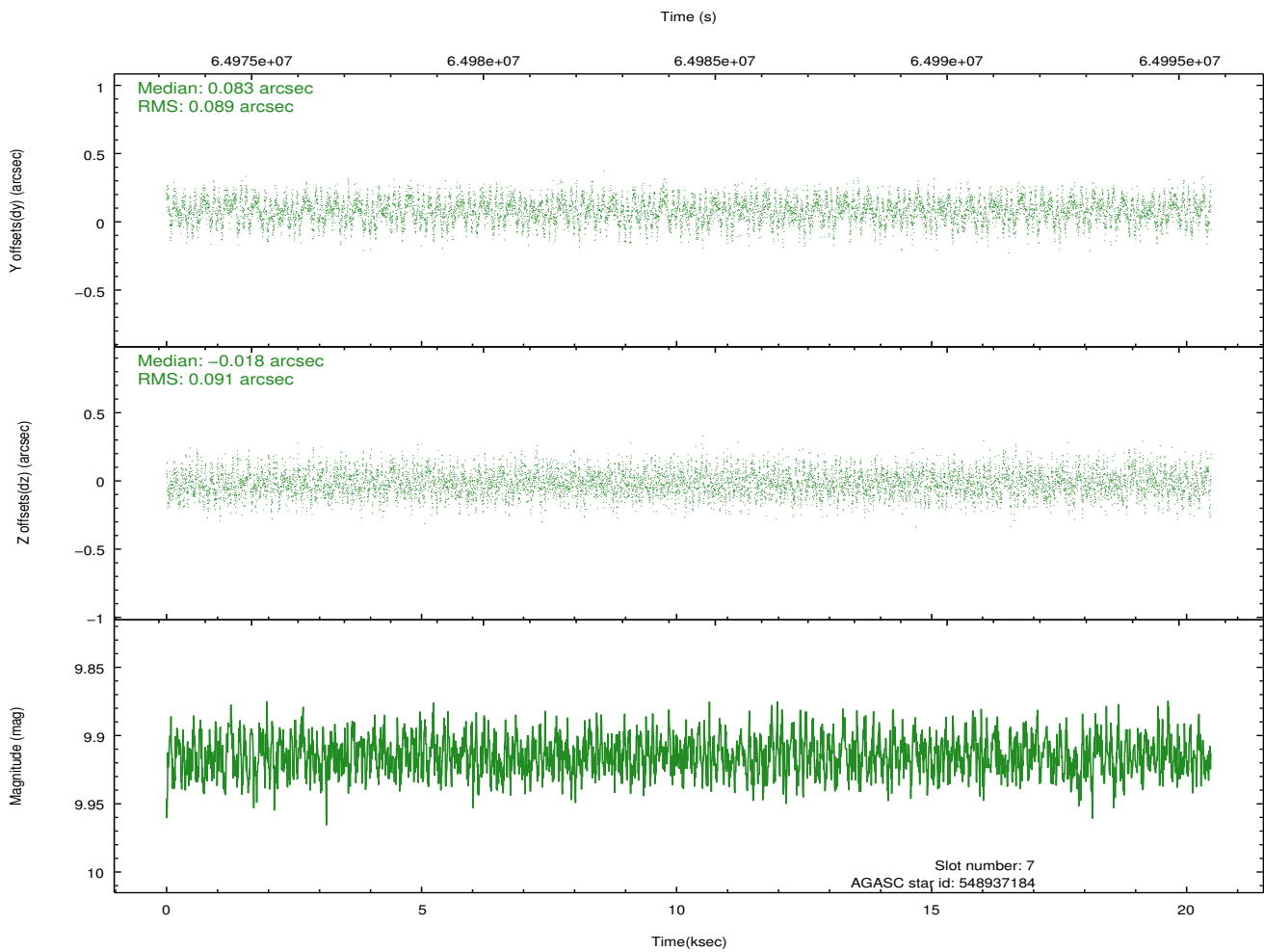
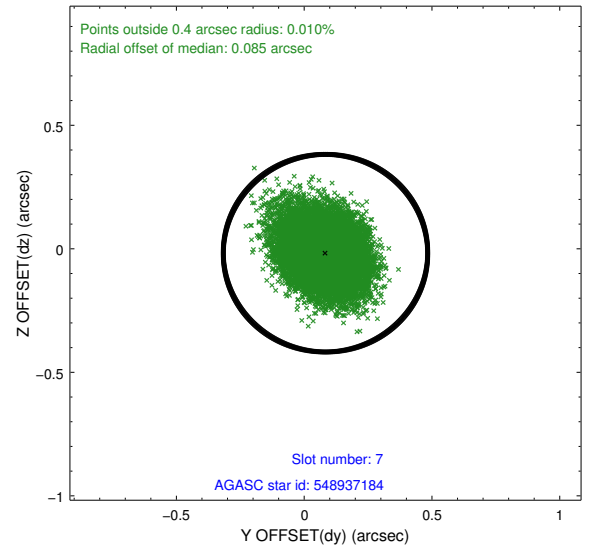
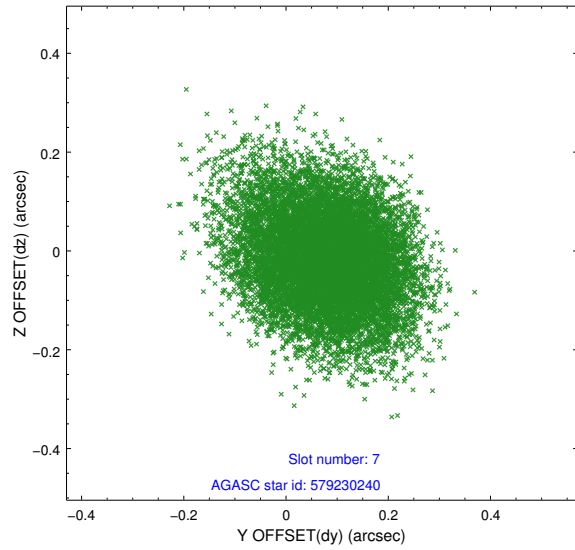
2.4.3 Slot 5



2.4.4 Slot 6

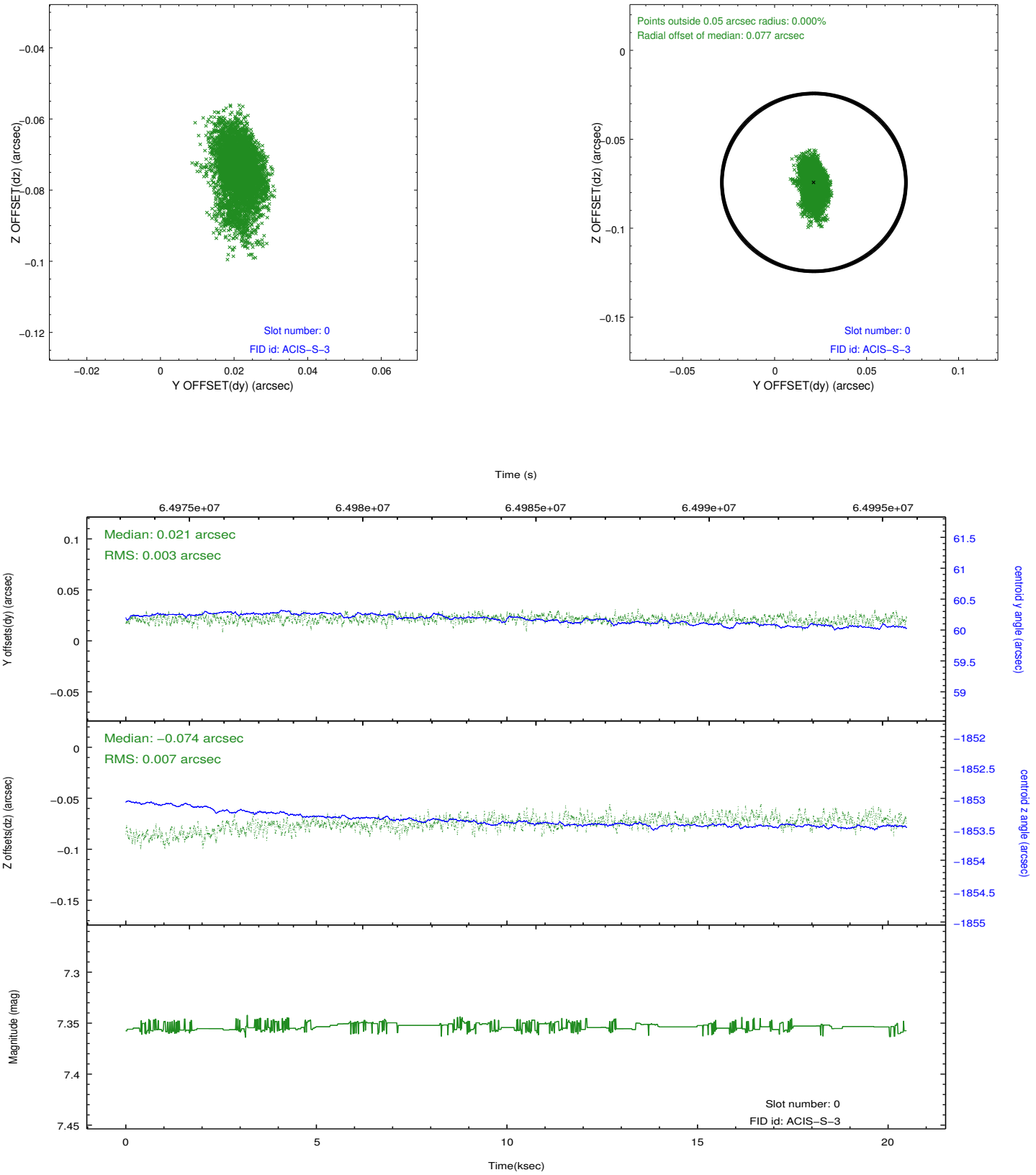


2.4.5 Slot 7

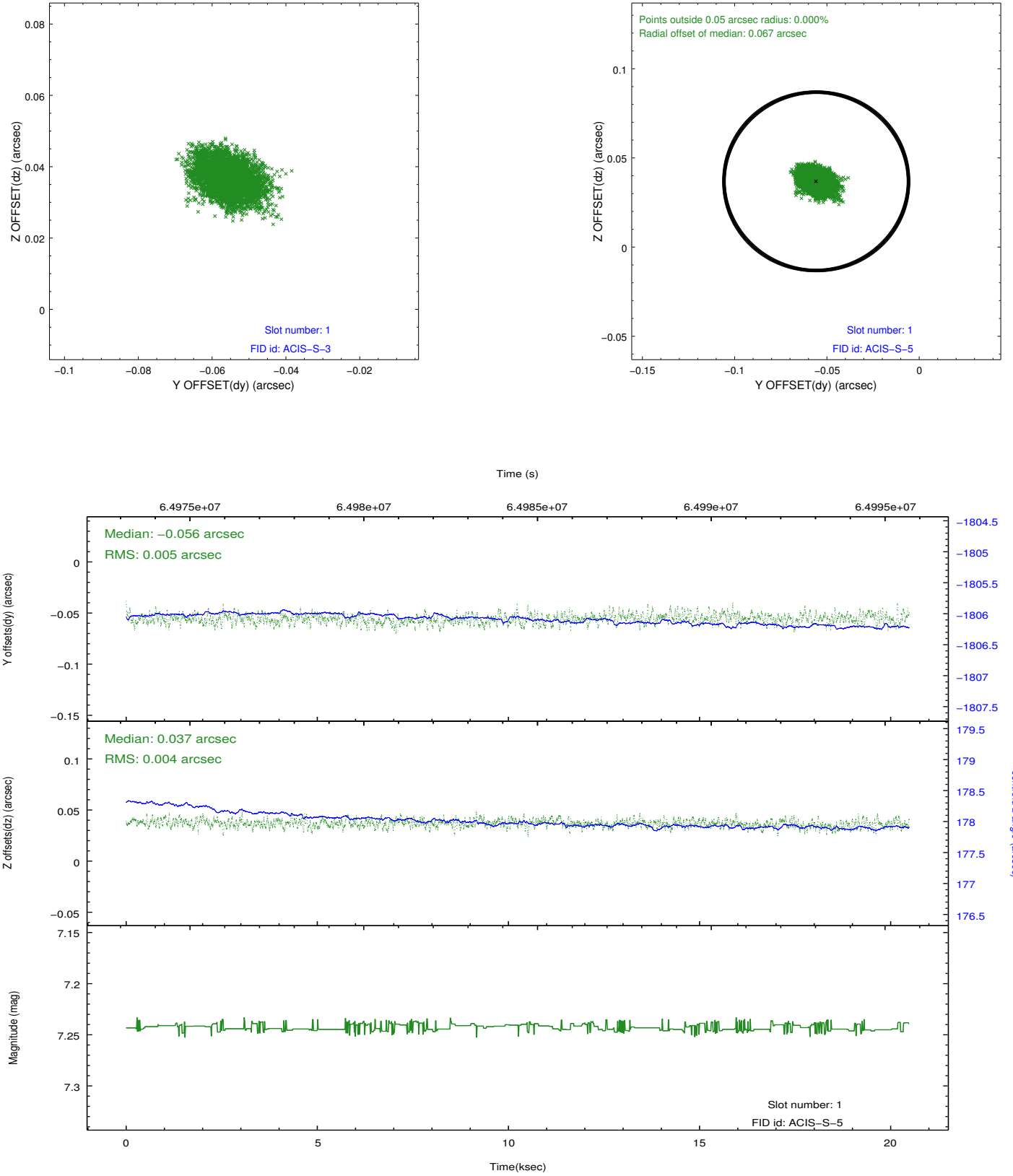


2.5 FID Slots

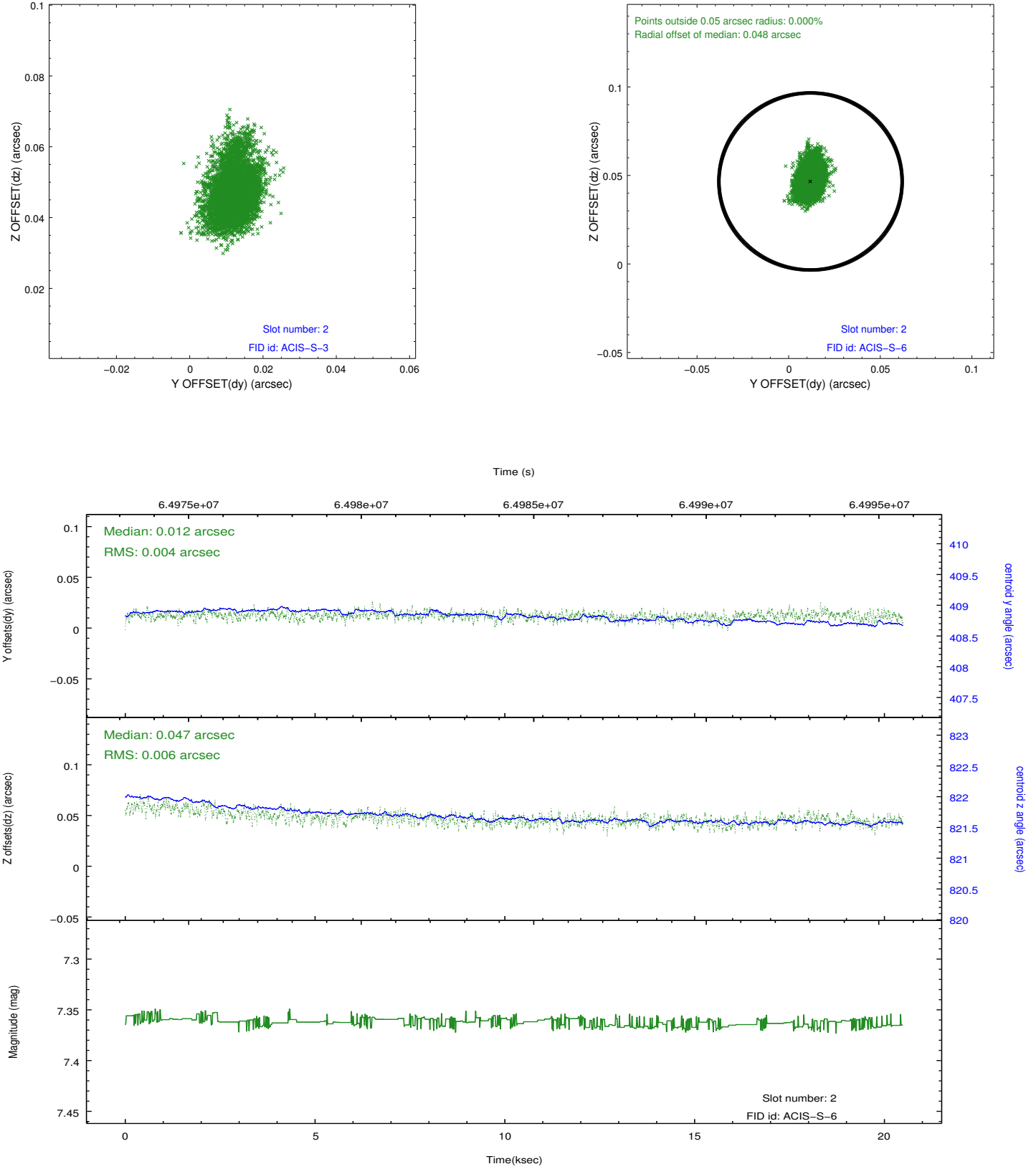
2.5.1 Slot 0



2.5.2 Slot 1



2.5.3 Slot 2



3 Point Sources

A Summary

A.1 Status

V&V Scientist	Beth Sundheim
V&V Date (YYYY-MM-DD)	2009.12.10
V&V Edition	1
V&V Disposition and Status	OK
V&V Charge Time	19.856

A.2 Comments

Focal plane temperature is warmer than -118.7 C degrees during the entire observation. This temperature is the upper limit of the verified ACIS calibration for the front-illuminated chips. The focal plane temperature is also warmer than -116.7 degrees C for the entire observation. This temperature is the upper limit of the verified ACIS calibration for the back-illuminated chips. The ACIS spectral response calibration is less accurate at these warmer temperatures than it is at -119.7 C. Users whose science objectives depend on the most accurate spectral response (ie: fitting line-rich spectra) may notice an effect. Users whose science objectives do not depend on the most accurate spectral response should not notice an effect.