

# V&V Reference Report

## L2 ASCDS Version : 8.4.5

Observation 866 - L2 Version 4  
Chandra X-Ray Center

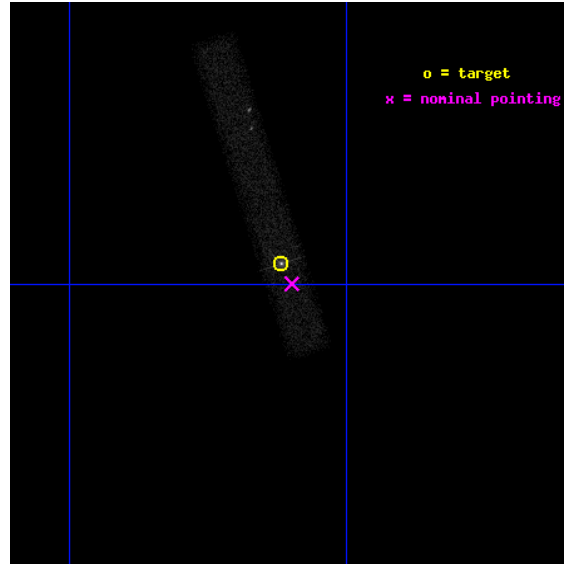
L2 Processing Date : Aug 28 2012

## Contents

<b>1</b>	<b>Front</b>	<b>2</b>
<b>2</b>	<b>OBI</b>	<b>3</b>
2.1	OBI . . . . .	3
2.1.1	Images . . . . .	3
2.1.2	Bias . . . . .	3
2.1.3	Parameters . . . . .	4
2.1.4	Events . . . . .	4
2.2	Compared Parameters . . . . .	5
2.3	Aspect . . . . .	6
2.4	Star Slots . . . . .	9
2.4.1	Slot 3 . . . . .	9
2.4.2	Slot 4 . . . . .	10
2.4.3	Slot 5 . . . . .	11
2.4.4	Slot 6 . . . . .	12
2.4.5	Slot 7 . . . . .	13
2.5	FID Slots . . . . .	14
2.5.1	Slot 0 . . . . .	14
2.5.2	Slot 1 . . . . .	15
2.5.3	Slot 2 . . . . .	16
<b>A</b>	<b>Summary</b>	<b>17</b>
A.1	Status . . . . .	17
A.2	Comments . . . . .	17

# 1 Front

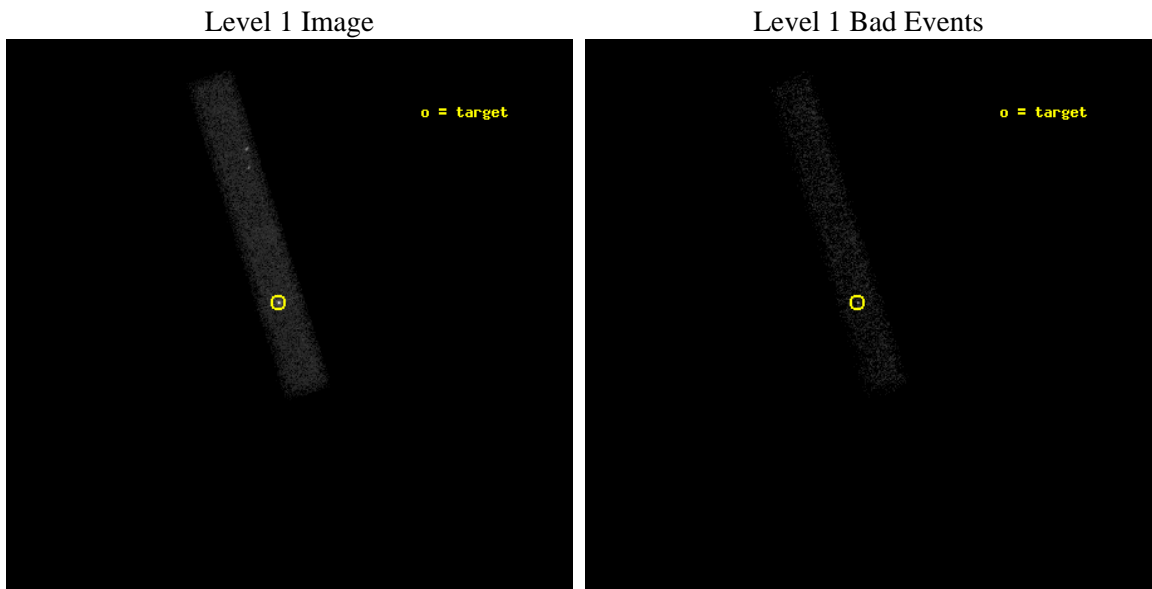
seq_num	700171	Sequence number
obs_id	866	Observation id
title	X-RAY ABSORPTION IN MODERATE REDSHIFT DAMPED LYMAN ALPHA GALAXIES	&#160
observer	Dr. Jill Bechtold	Principal investigator
object	Q1127-145	Source name
dtcycle	0	&#160
cycle	P	events from which exps? Prim/Second/Both
ra_targ	172.529583	Observer's specified target RA [deg]
dec_targ	-14.824167	Observer's specified target Dec [deg]
ra_nom	172.5247005405	Nominal RA [deg]
dec_nom	-14.832969257413	Nominal Dec [deg]
roll_nom	252.32573623649	Nominal Roll [deg]
revision	4	Processing version of data
ontime	30165.07737942	Sum of GTIs [s]
livetime	27358.132939797	Livetime [s]
ontime7	30165.07737942	Sum of GTIs [s]
l2events	32290	Number of level 2 events



## 2 OBI

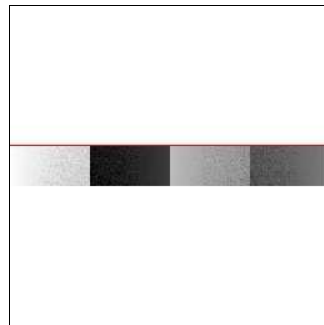
### 2.1 OBI

#### 2.1.1 Images



#### 2.1.2 Bias

Chip 7



### 2.1.3 Parameters

obi_num	0	Obi number	sched_exp_time	30000.000000	[s] Scheduled observation exposure time
ascdsver	8.4.5	Processing system revision	ontime	30165.07737942	Sum of GTIs [s]
caldsver	4.5.1.1	&#160	ontime7	30165.07737942	Sum of GTIs [s]
date	2012-08-28T06:04:00	Date and time of file creation	l1events	51348	Number of level 1 events
revision	4	Processing version of data			

### 2.1.4 Events

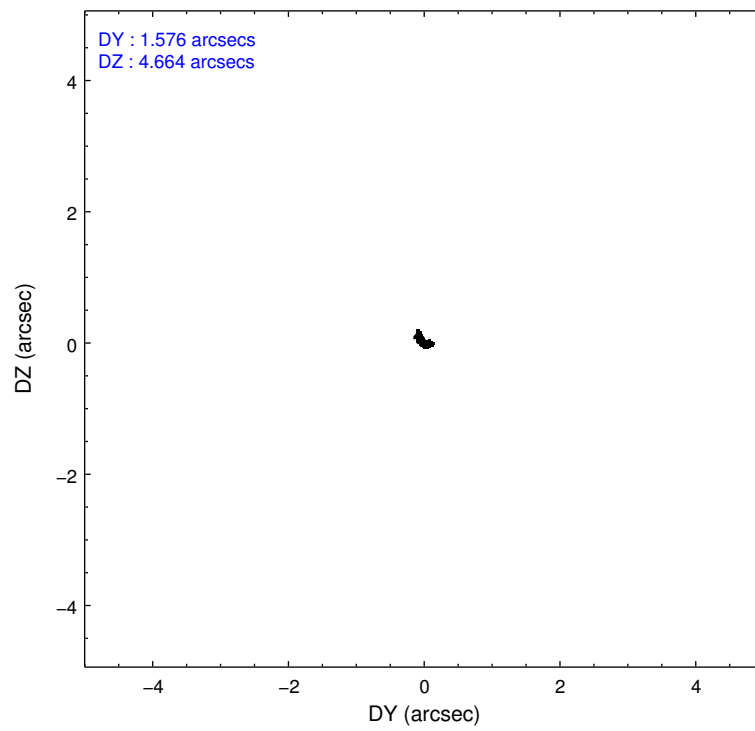
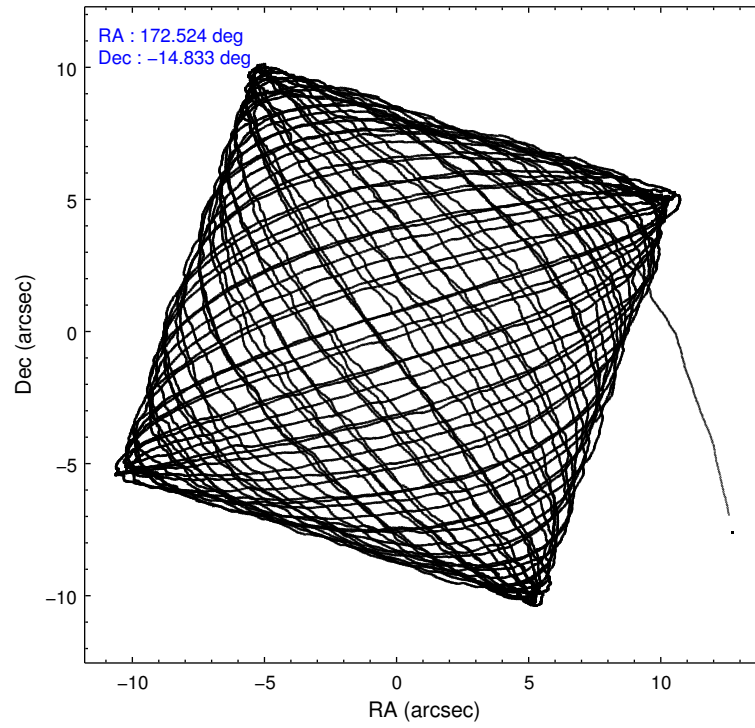
	<b>ccd 7</b>
level 1 events	51348
rejected events	18387
rejected %	<b>35%</b>

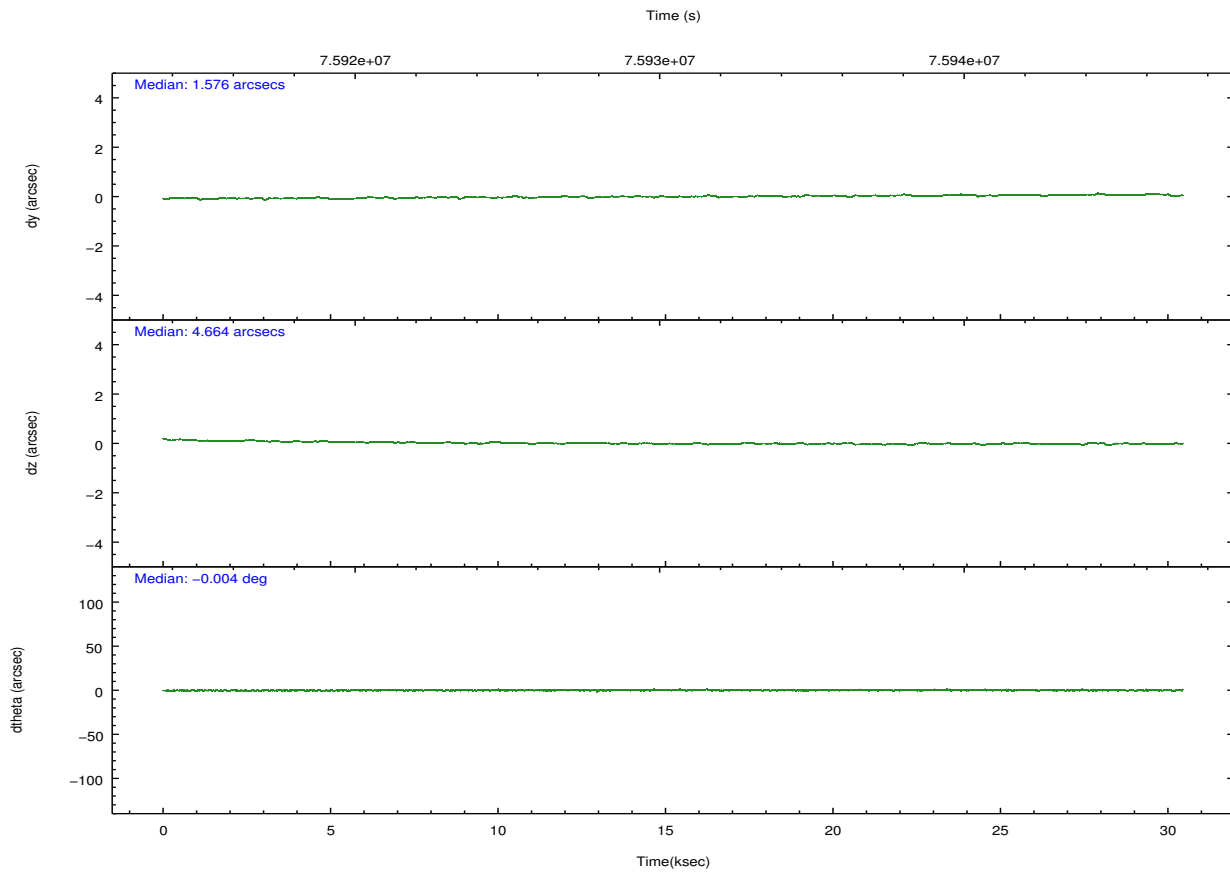
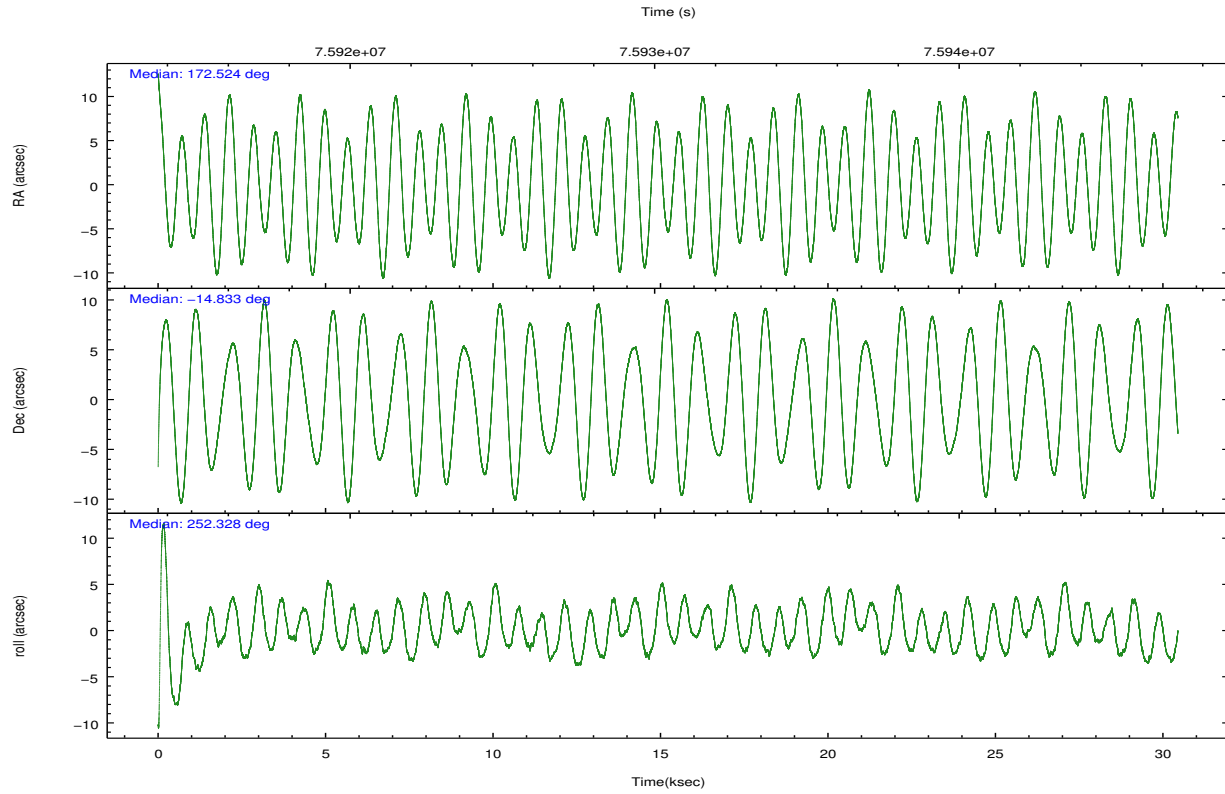
	<b>ccd 7</b>
grade 0 events	6715
	13%
grade 1 events	116
	0%
grade 2 events	7397
	14%
grade 3 events	4309
	8%
grade 4 events	4166
	8%
grade 5 events	3434
	6%
grade 6 events	10998
	21%
grade 7 events	14213
	27%

## 2.2 Compared Parameters

Parameter	Planned	Actual	Parameter	Planned	Actual
Instrument	ACIS	ACIS	Obspar format version number	7	7
Detector	ACIS-7	ACIS-7	Obspar file type	PREDICTED	ACTUAL
Grating	NONE	NONE	Obspar update status	NONE	UPDATED
Data mode	VFAINT	VFAINT	Number of optional ACIS chips dropped	0	0
Observation mode	POINTING	POINTING	On-chip summing requested	N	N
[deg] Pointing RA	172.518533	172.5247005404986	Subarray requested	CUSTOM	1/8
[deg] Pointing Dec	-14.806204	-14.83296925741313	Subarray start row	449	449
[deg] Pointing Roll	252.167546	252.3257362364855	Subarray row count	128	128
[mm] SIM focus pos	-0.684267	-0.6828225247311905	Alternating exposures requested	N	N
[mm] SIM defocus	0	0.001444936568705701	[s] Primary exposure time	0.000000	0.4
[mm] SIM translation stage pos	-190.132523	-190.1400660498719			
[mm] SIM translation stage offset	0	0.00754346686406393			
[s] Observation start time (MET)	75915385.184000	75914139.38355801			
Observation start date	2000-05-28T15:35:21	2000-05-28T15:15:39			
[s] Observation end time (MET)	75945385.184000	75946213.684738			
Observation end date	2000-05-28T23:55:21	2000-05-29T00:10:13			
Read mode	TIMED	TIMED			

## 2.3 Aspect



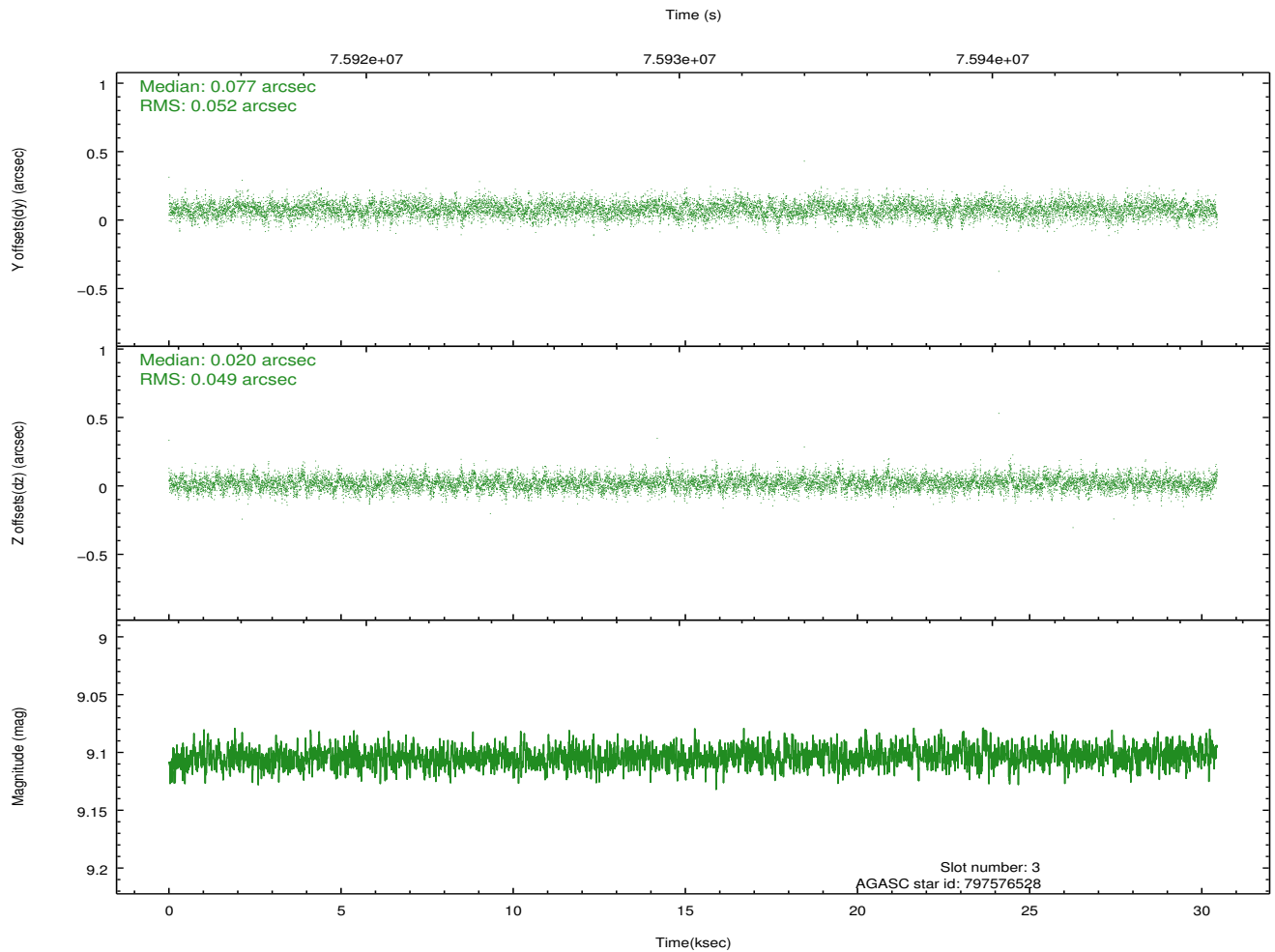
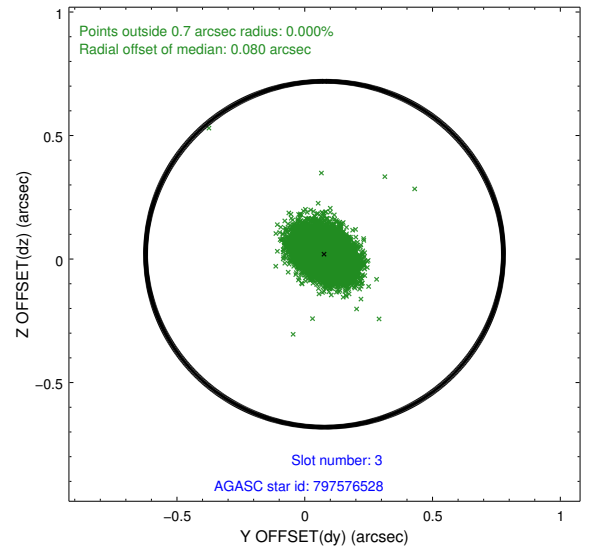
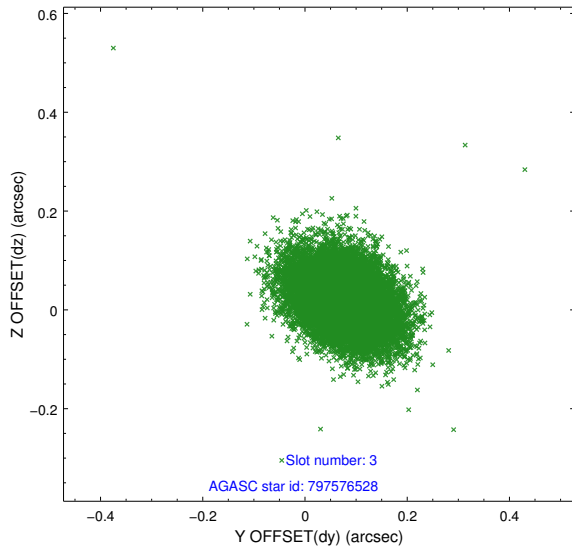


### Slot Statistics

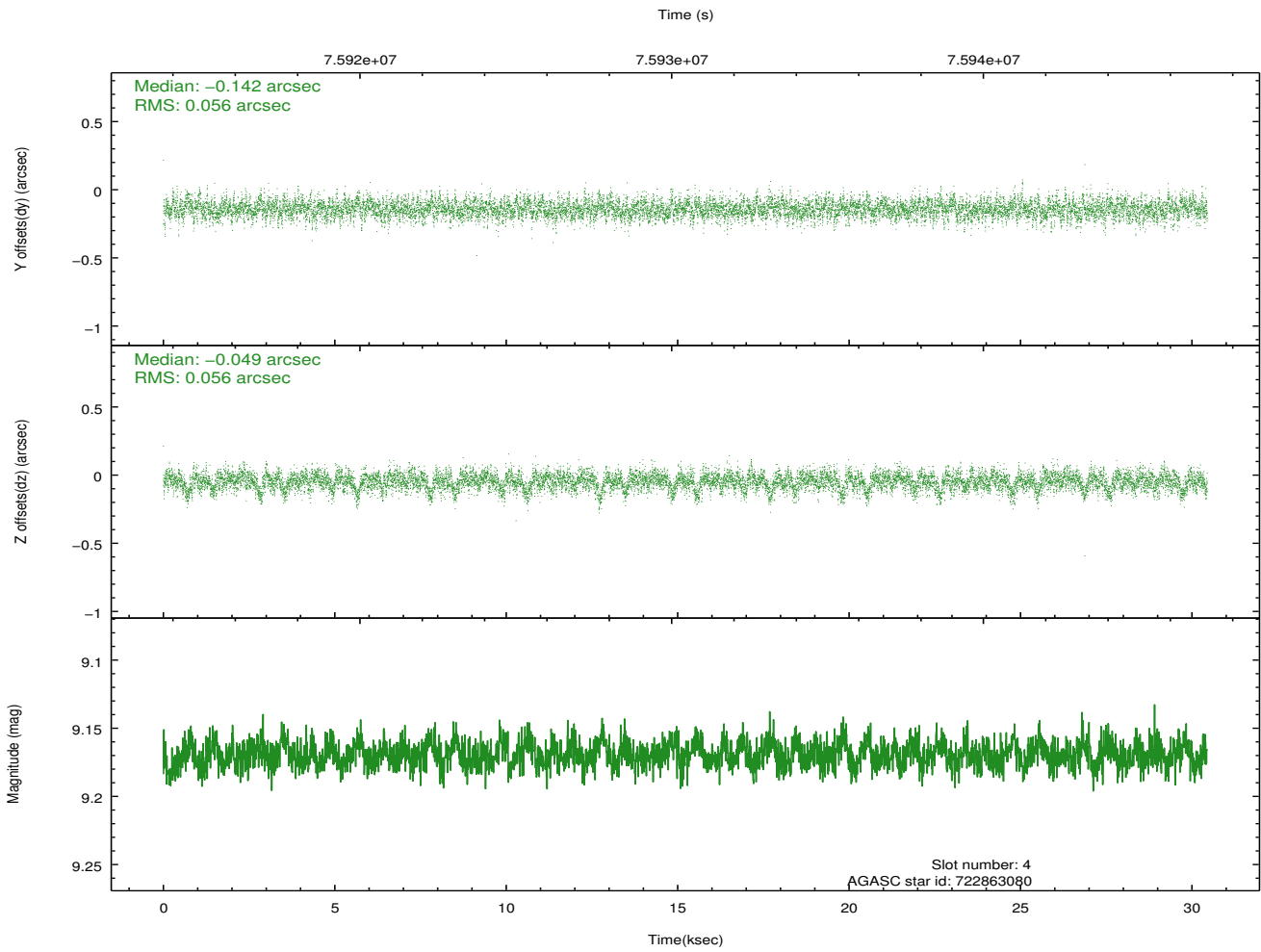
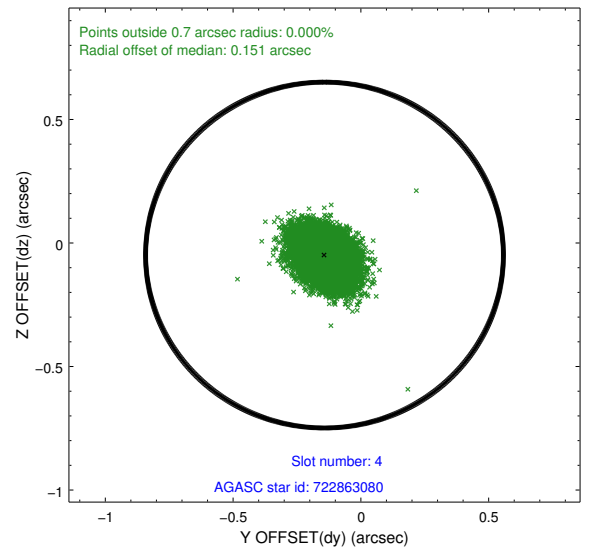
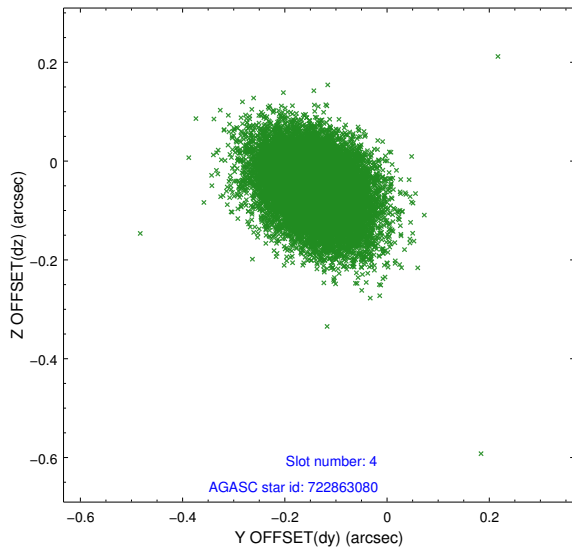
slot	status	id	mag	n_pts	med_dy	med_dz	dr1	dr2	ra	dec	mean_y	mean_z
0	FID	ACIS-S-2	7.10	7426	-0.029	-0.007	0.007	0.011	0.000000	0.000000	-754.21	-1725.79
1	FID	ACIS-S-4	7.21	7426	-0.002	0.016	0.005	0.010	0.000000	0.000000	2159.07	182.64
2	FID	ACIS-S-5	7.24	7426	-0.001	0.000	0.007	0.011	0.000000	0.000000	-1806.93	176.39
3	GUIDE	797576528	9.10	14844	0.077	0.020	0.074	0.125	172.316371	-15.112296	1264.60	-330.69
4	GUIDE	722863080	9.17	14846	-0.142	-0.049	0.083	0.140	172.588232	-14.459470	-1262.65	-150.31
5	GUIDE	797578040	9.39	14835	0.107	0.032	0.085	0.143	172.608699	-15.322154	1672.50	867.46
6	GUIDE	797576320	9.57	14843	0.072	0.006	0.097	0.157	172.654362	-15.103332	874.13	777.66
7	GUIDE	722862344	9.87	14844	-0.114	-0.005	0.101	0.165	172.614345	-14.409341	-1462.31	-118.73

## 2.4 Star Slots

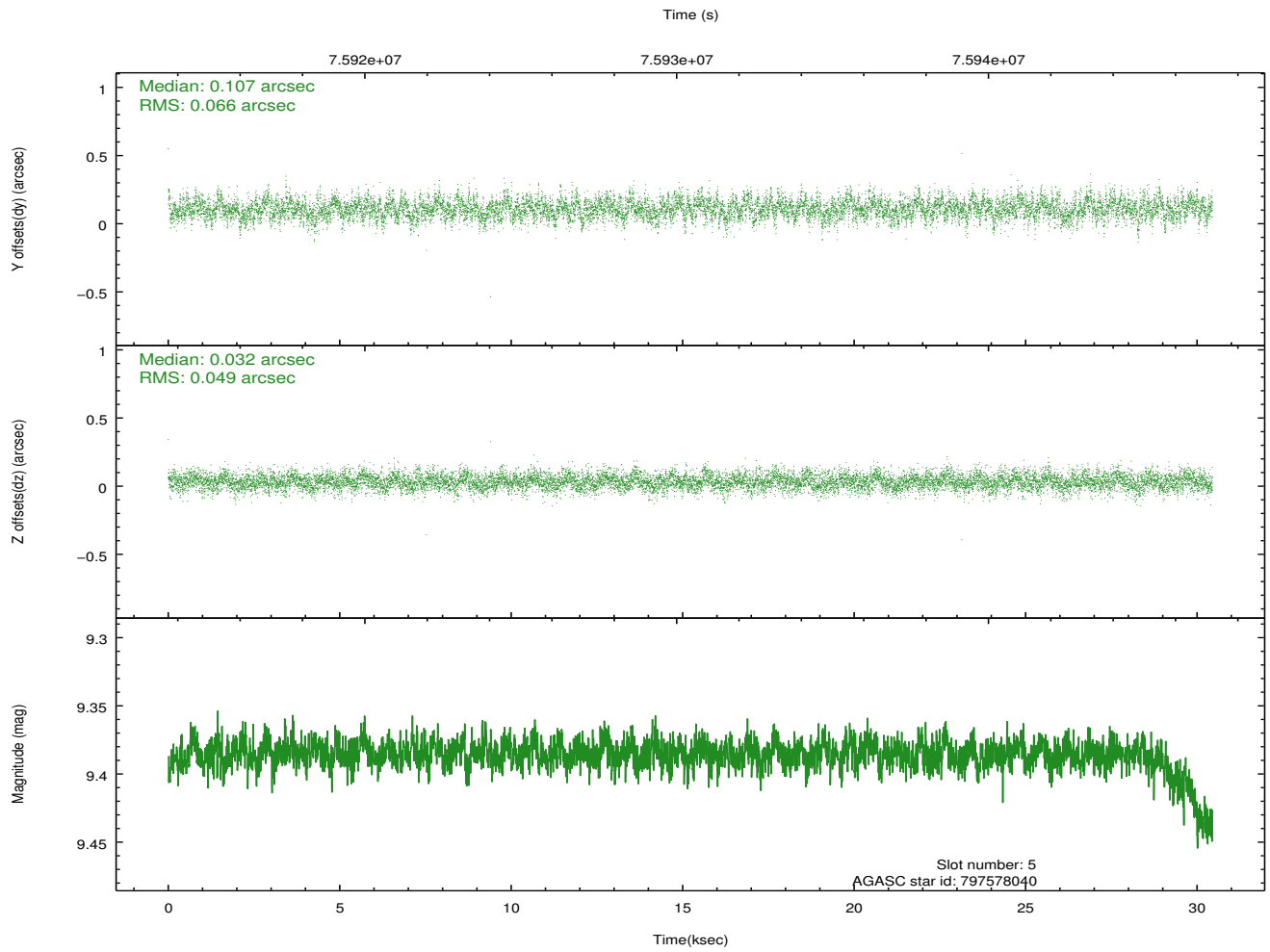
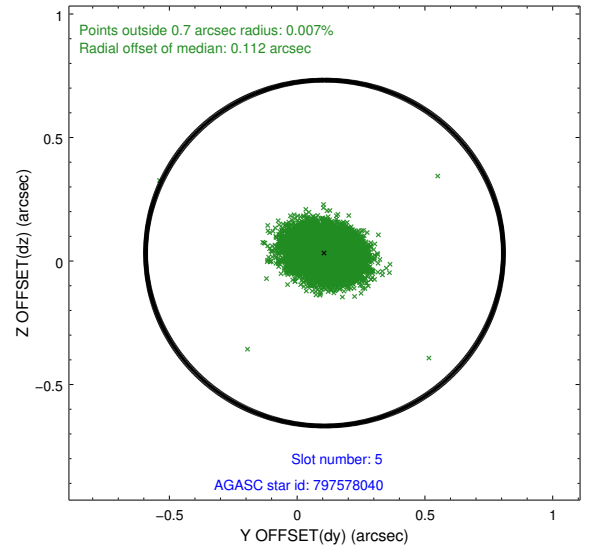
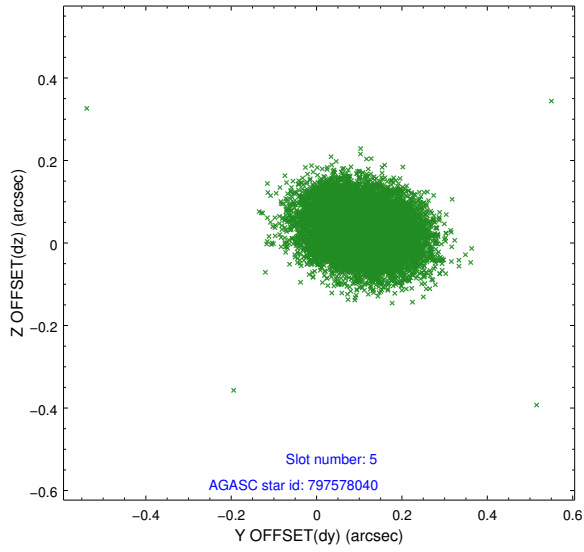
### 2.4.1 Slot 3



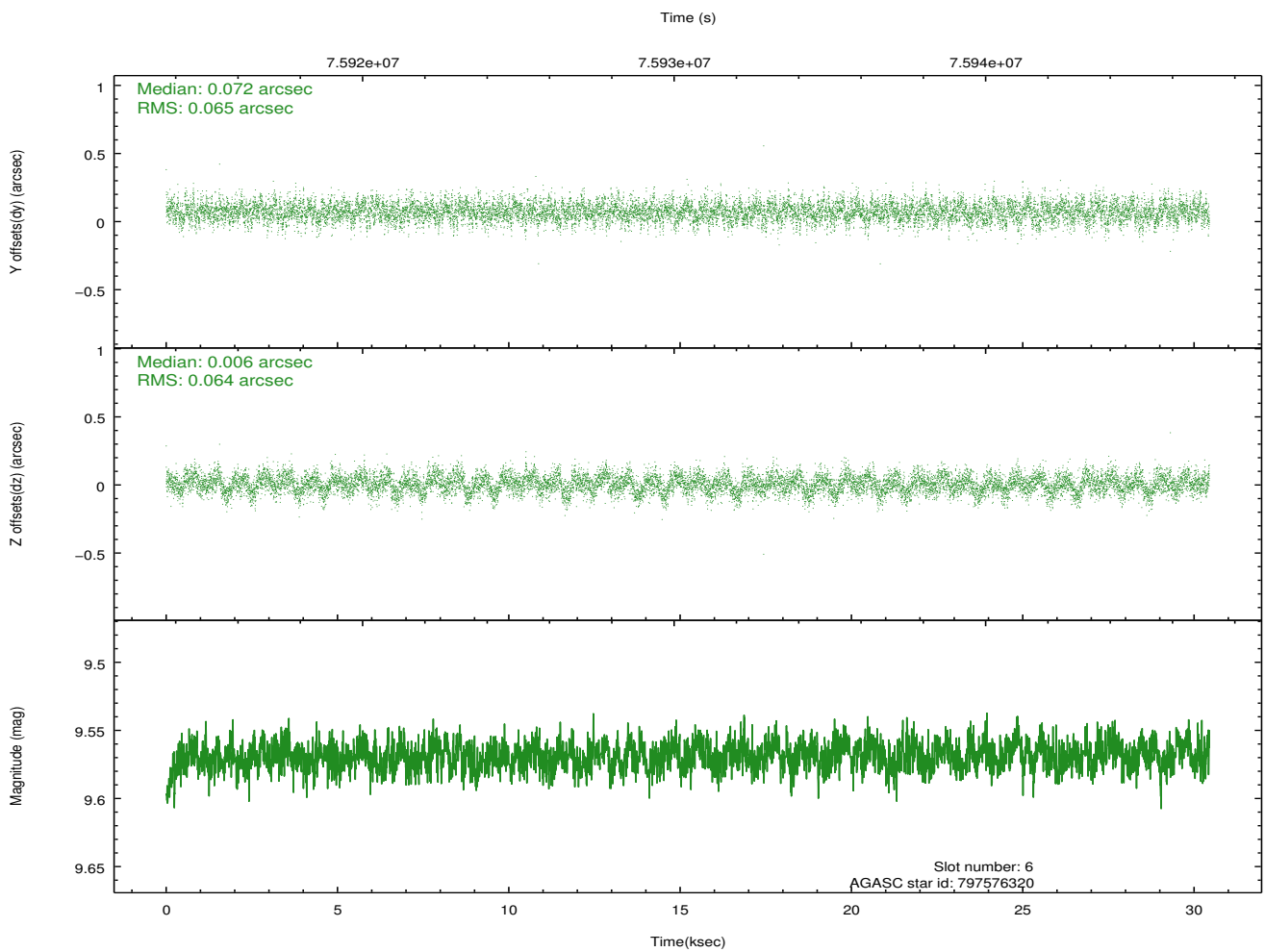
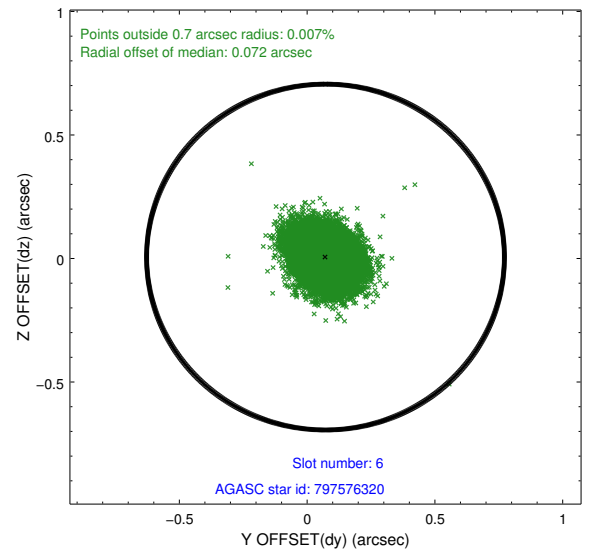
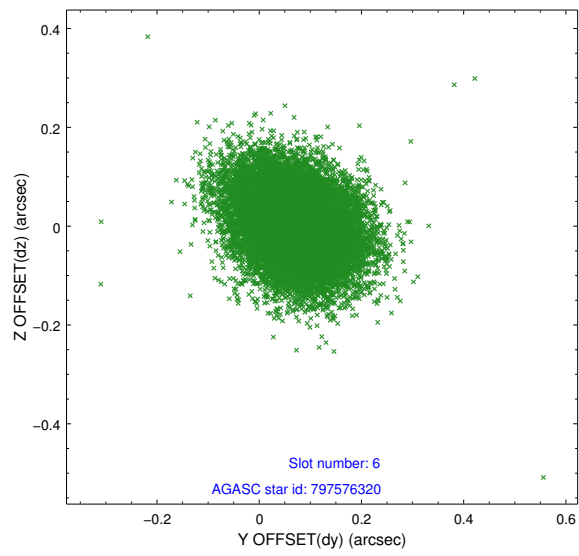
## 2.4.2 Slot 4



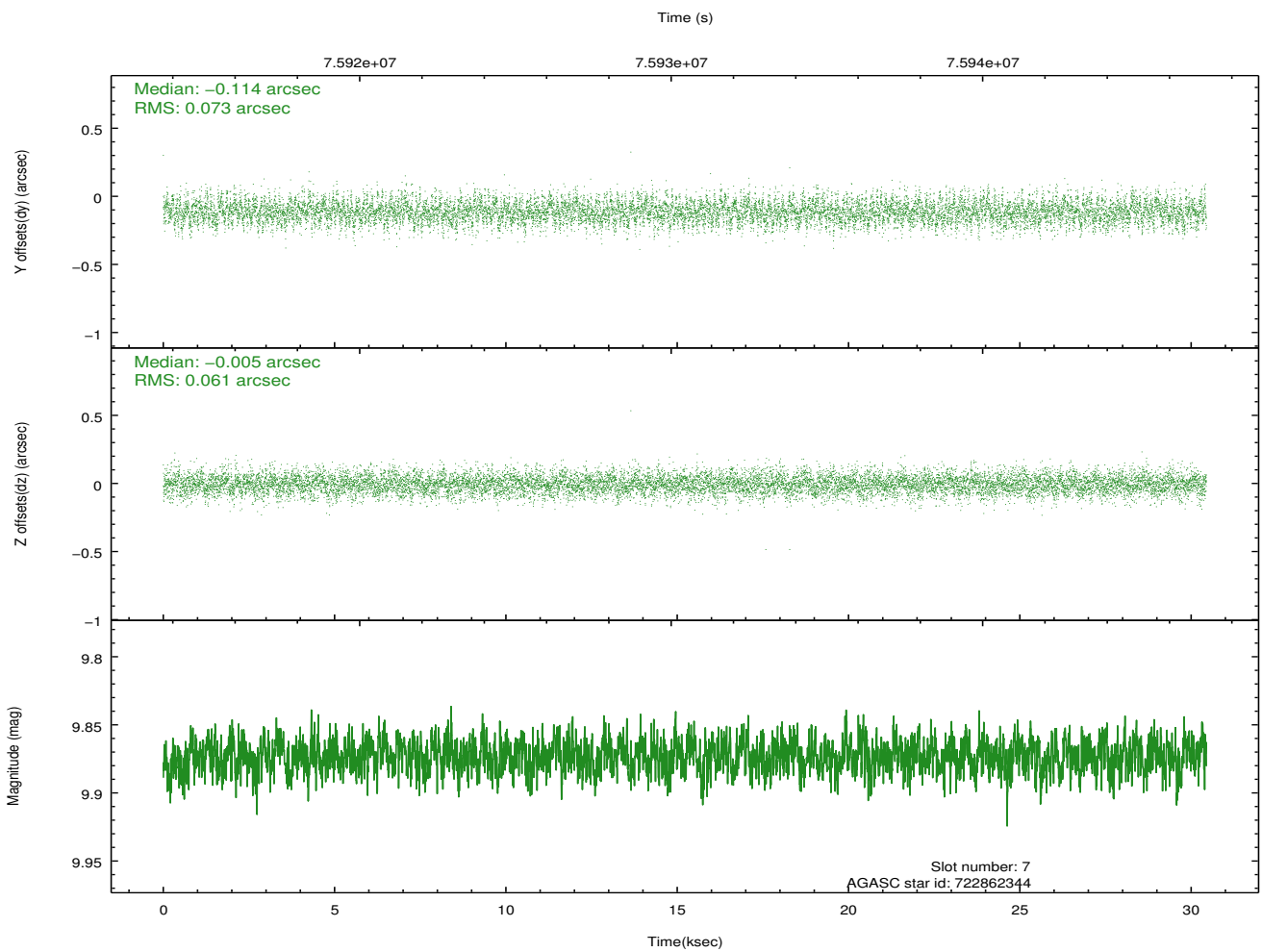
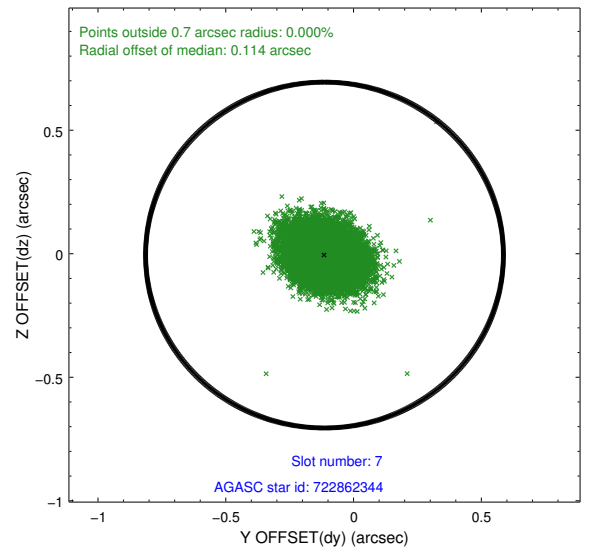
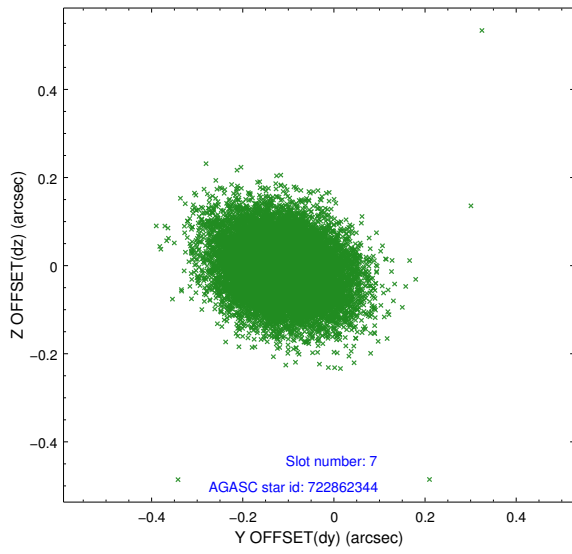
### 2.4.3 Slot 5



## 2.4.4 Slot 6

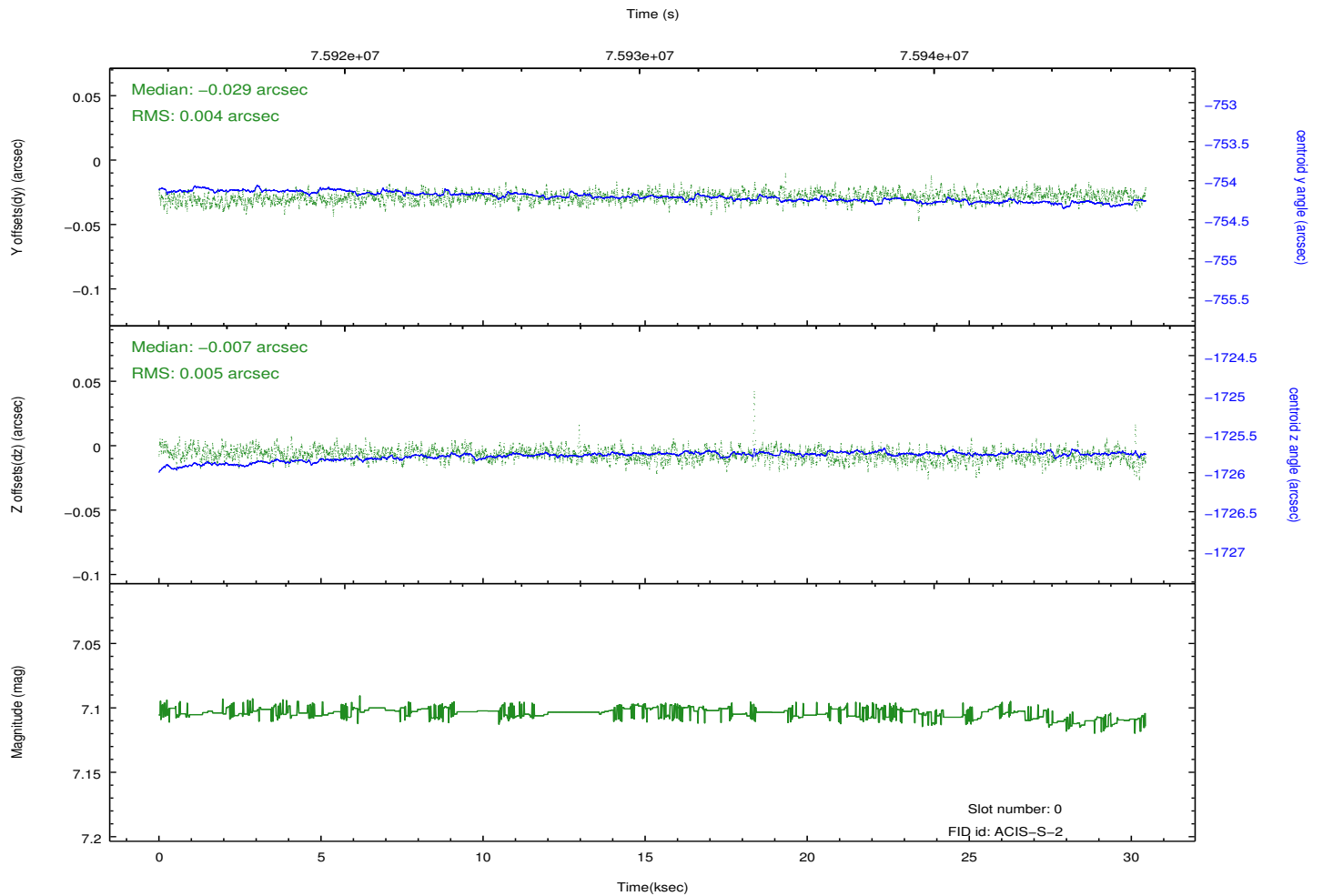
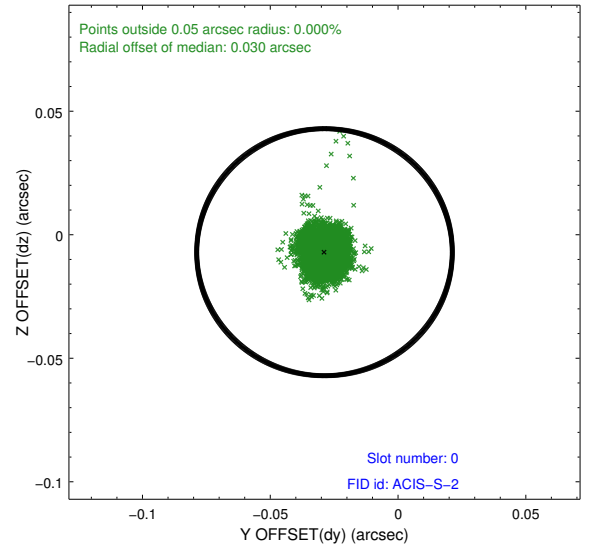
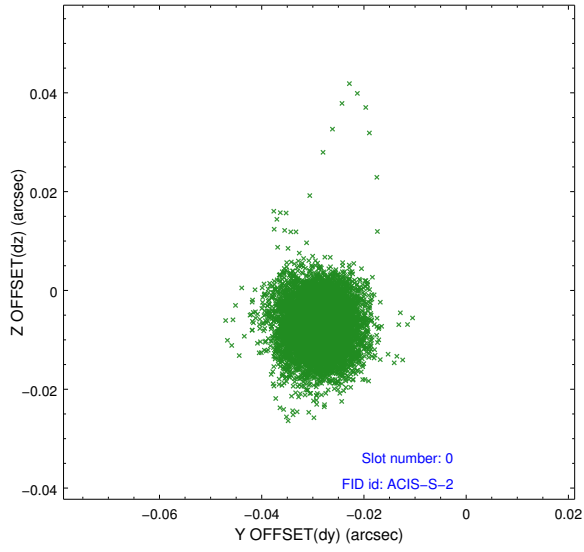


## 2.4.5 Slot 7

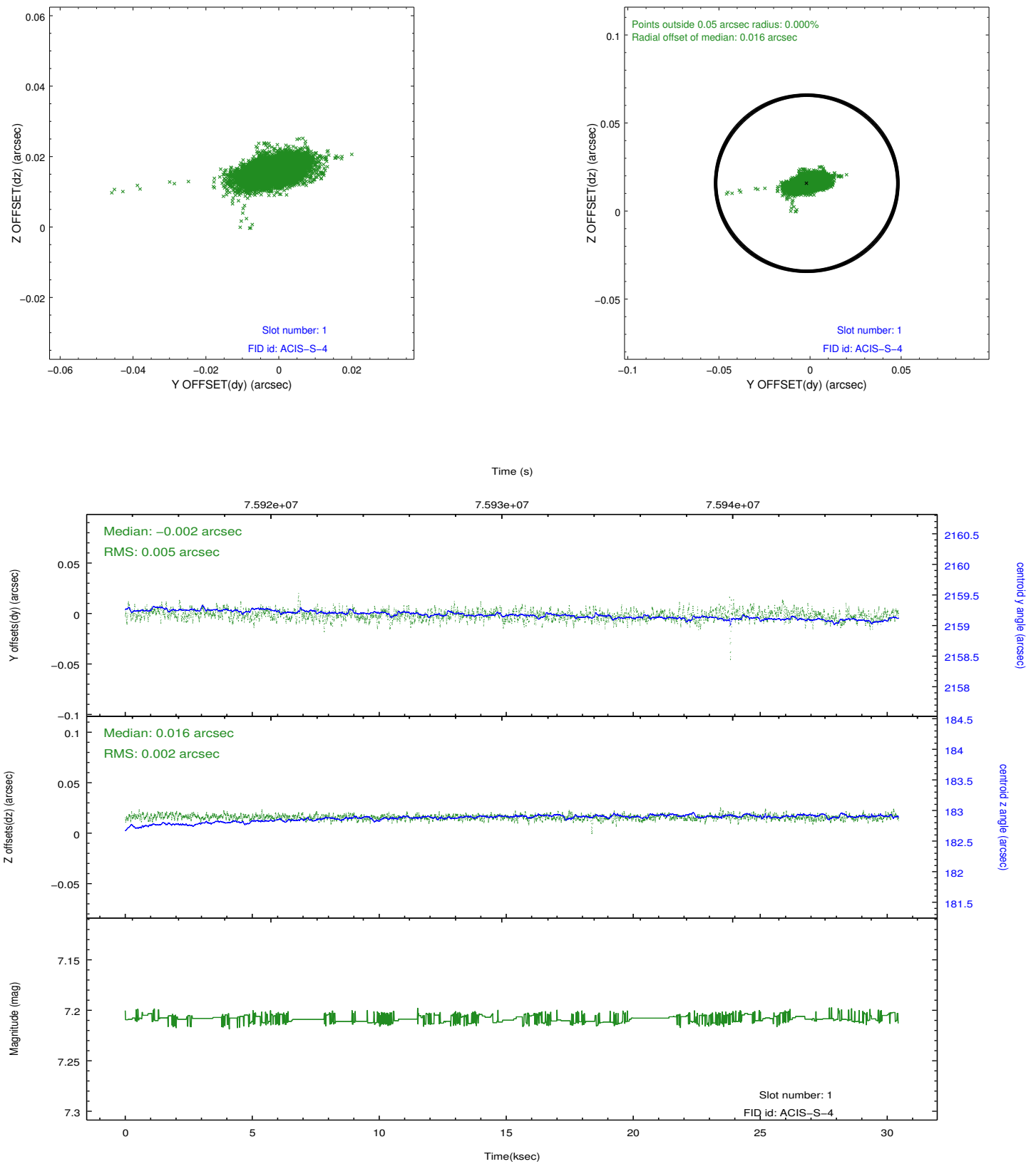


## 2.5 FID Slots

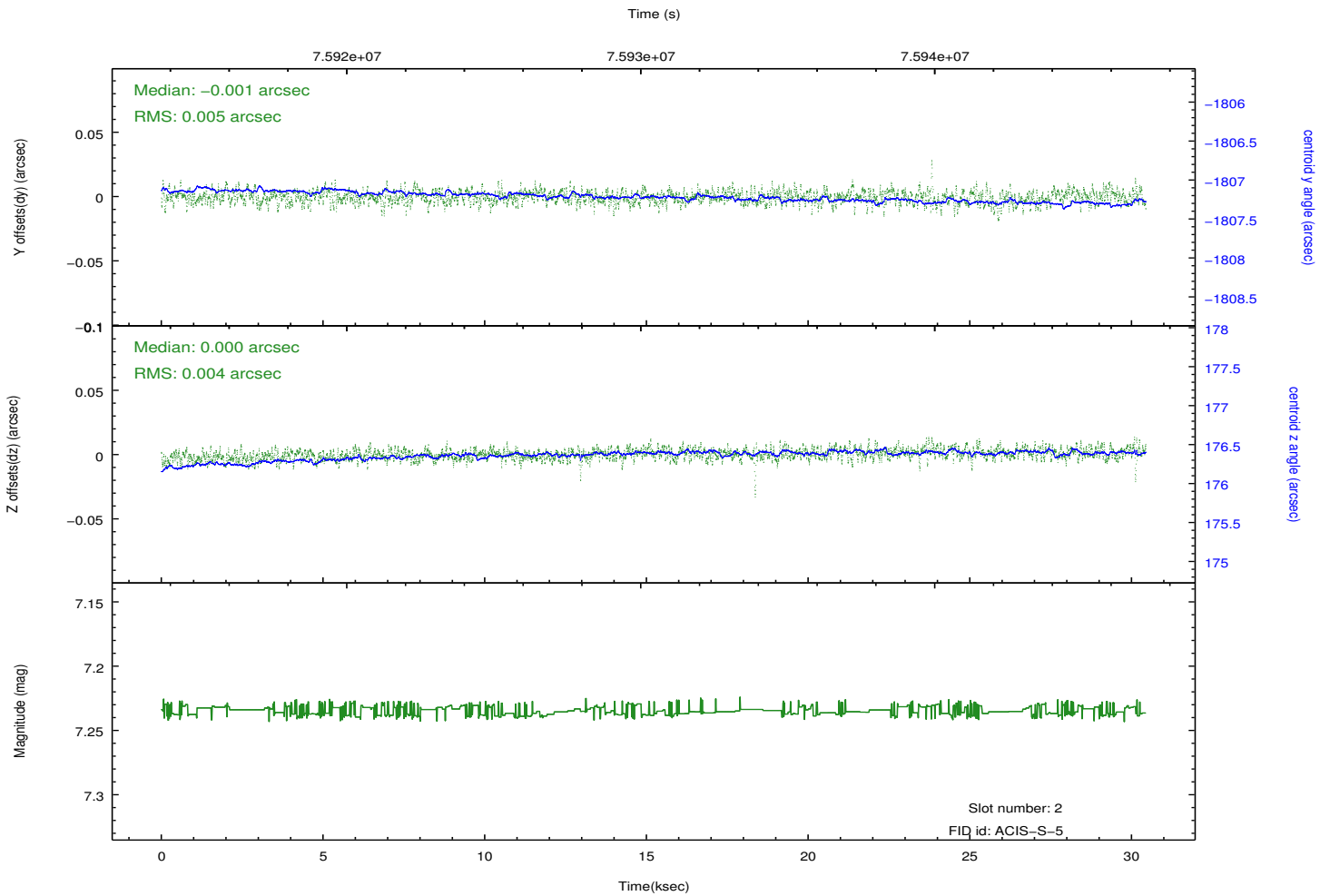
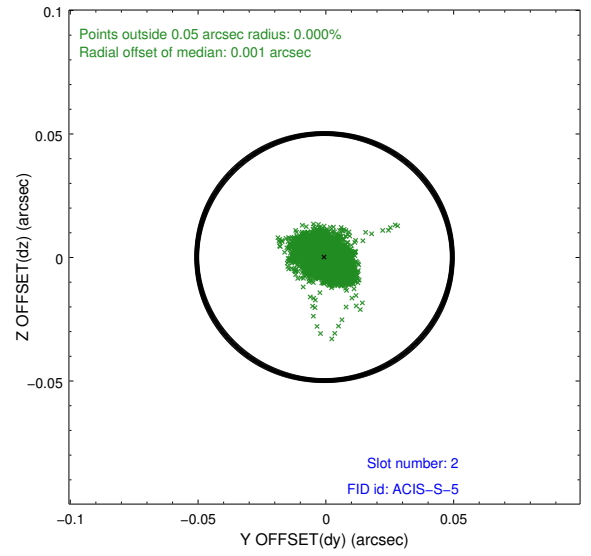
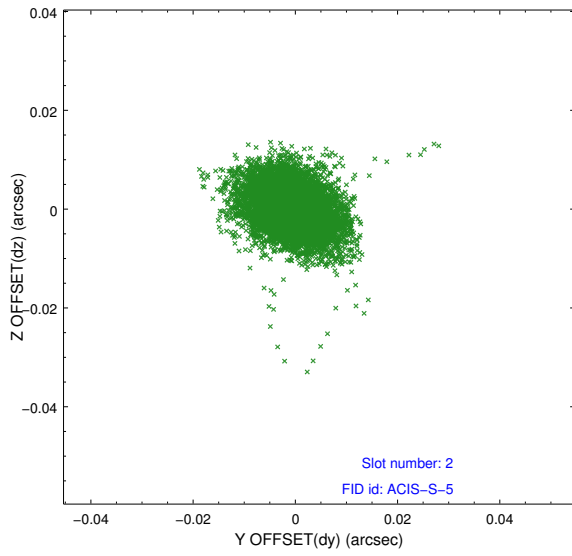
### 2.5.1 Slot 0



## 2.5.2 Slot 1



### 2.5.3 Slot 2



# A Summary

## A.1 Status

V&V Scientist	Jen Lauer
V&V Date (YYYY-MM-DD)	2012.08.30
V&V Edition	1
V&V Disposition and Status	OK
V&V Charge Time	30.165

## A.2 Comments