

V&V Reference Report

L2 ASCDS Version : 8.4.4

Observation 8966 - L2 Version 2
Chandra X-Ray Center

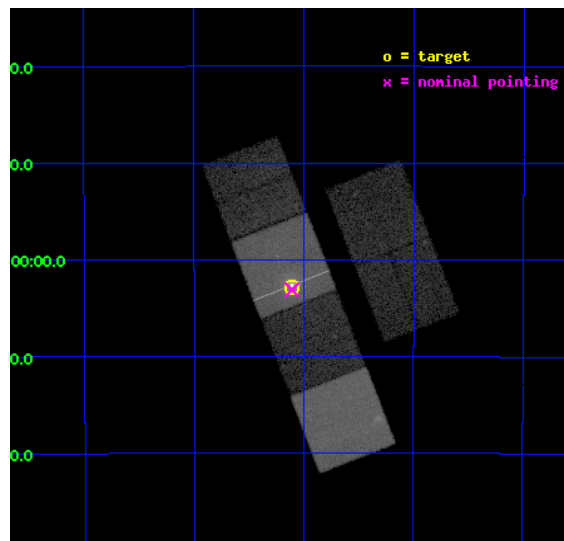
L2 Processing Date : May 12 2012

Contents

1	Front	2
2	OBI	3
2.1	OBI	3
2.1.1	Images	3
2.1.2	Bias	3
2.1.3	Parameters	4
2.1.4	Events	4
2.2	Compared Parameters	5
2.3	Aspect	6
2.4	Star Slots	9
2.4.1	Slot 3	9
2.4.2	Slot 4	10
2.4.3	Slot 5	11
2.4.4	Slot 6	12
2.4.5	Slot 7	13
2.5	FID Slots	14
2.5.1	Slot 0	14
2.5.2	Slot 1	15
2.5.3	Slot 2	16
A	Summary	17
A.1	Status	17
A.2	Comments	17

1 Front

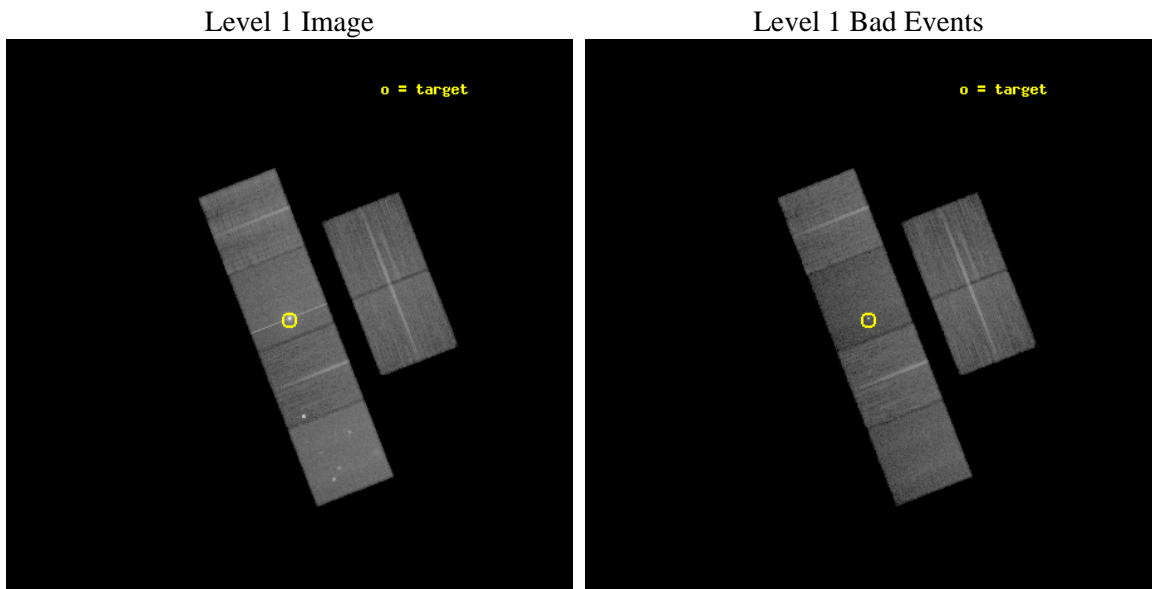
seq_num	300222	Sequence number
obs_id	8966	Observation id
title	A Chandra Legacy Survey of Dynamically Active Globular Clusters	Pr
observer	Prof. David Pooley	Principal investigator
object	NGC 1851	Source name
dtcycle	0	
cycle	P	events from which exps? Prim/Second/Both
ra_targ	78.52625	Observer's specified target RA [deg]
dec_targ	-40.047222	Observer's specified target Dec [deg]
ra_nom	78.527386445783	Nominal RA [deg]
dec_nom	-40.051998987994	Nominal Dec [deg]
roll_nom	248.6743172833	Nominal Roll [deg]
revision	2	Processing version of data
ontime	19042.196765602	Sum of GTIs [s]
livetime	18801.073004321	Livetime [s]
ontime2	19042.237805605	Sum of GTIs [s]
ontime3	19038.832665265	Sum of GTIs [s]
ontime5	19042.155725598	Sum of GTIs [s]
ontime6	19042.114685595	Sum of GTIs [s]
ontime7	19042.196765602	Sum of GTIs [s]
ontime8	19042.032605588	Sum of GTIs [s]
l2events	270019	Number of level 2 events



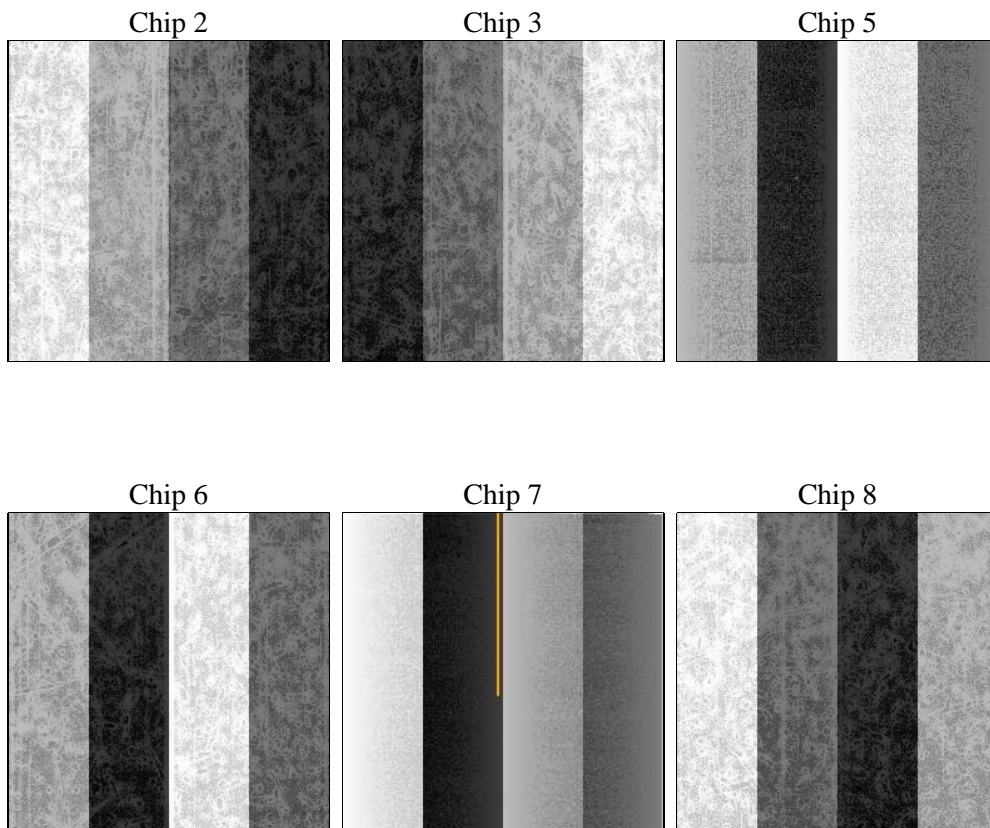
2 OBI

2.1 OBI

2.1.1 Images



2.1.2 Bias



2.1.3 Parameters

obi_num	0	Obi number	sched_exp_time	18892.420000	[s] Scheduled observation exposure time
ascdsver	8.4.4	Processing system revision	ontime	19042.196765602	Sum of GTIs [s]
caldbver	4.4.9	 	ontime2	19042.237805605	Sum of GTIs [s]
date	2012-05-12T13:45:11	Date and time of file creation	ontime3	19038.832665265	Sum of GTIs [s]
revision	2	Processing version of data	ontime5	19042.155725598	Sum of GTIs [s]
			ontime6	19042.114685595	Sum of GTIs [s]
			ontime7	19042.196765602	Sum of GTIs [s]
			ontime8	19042.032605588	Sum of GTIs [s]
			l1events	1065954	Number of level 1 events

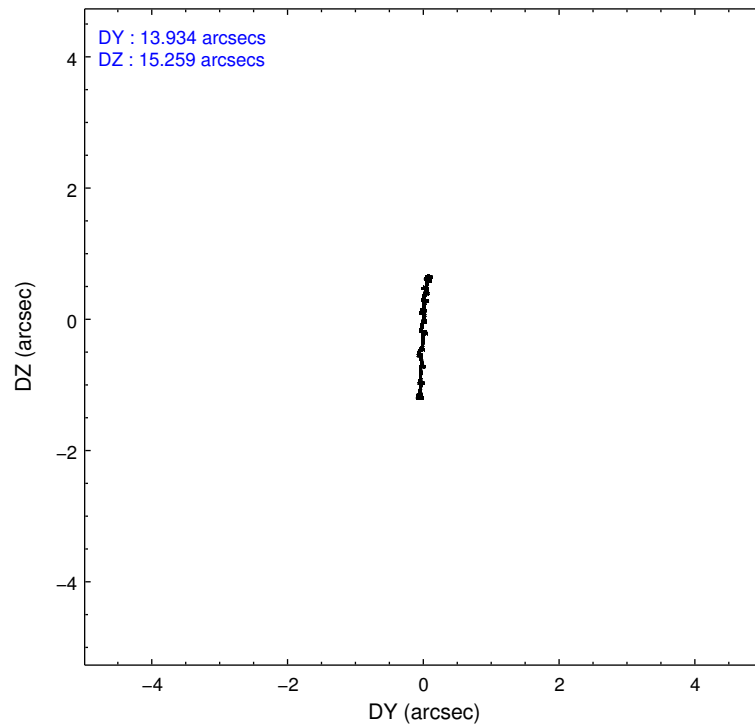
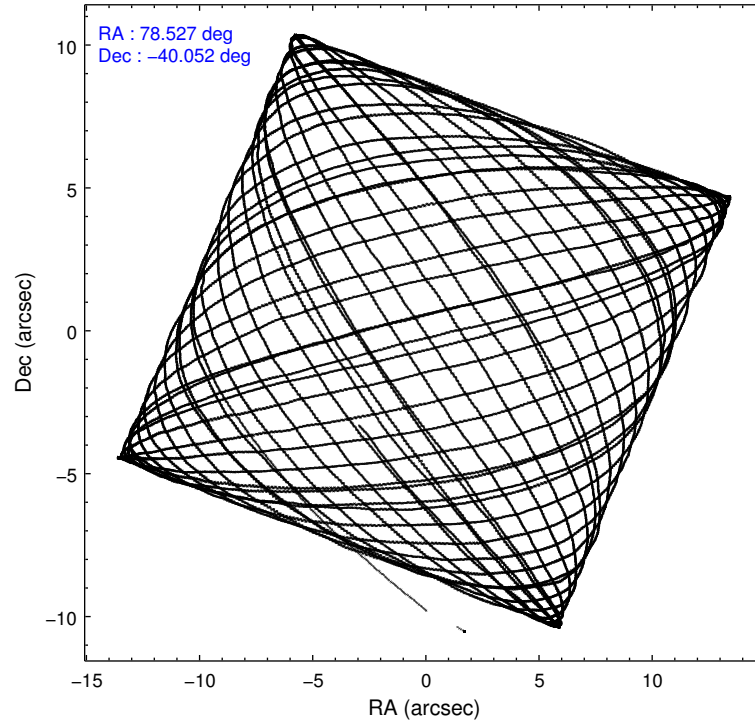
2.1.4 Events

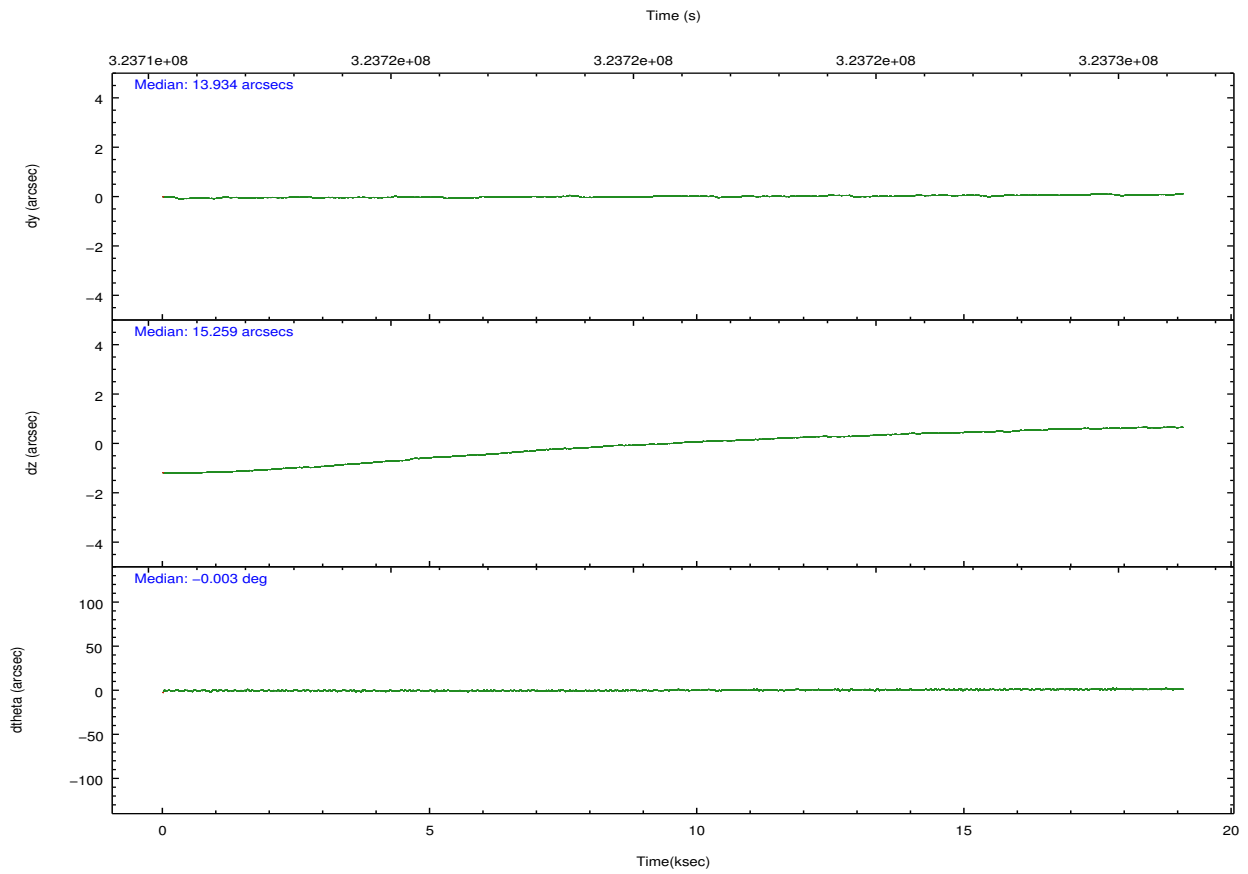
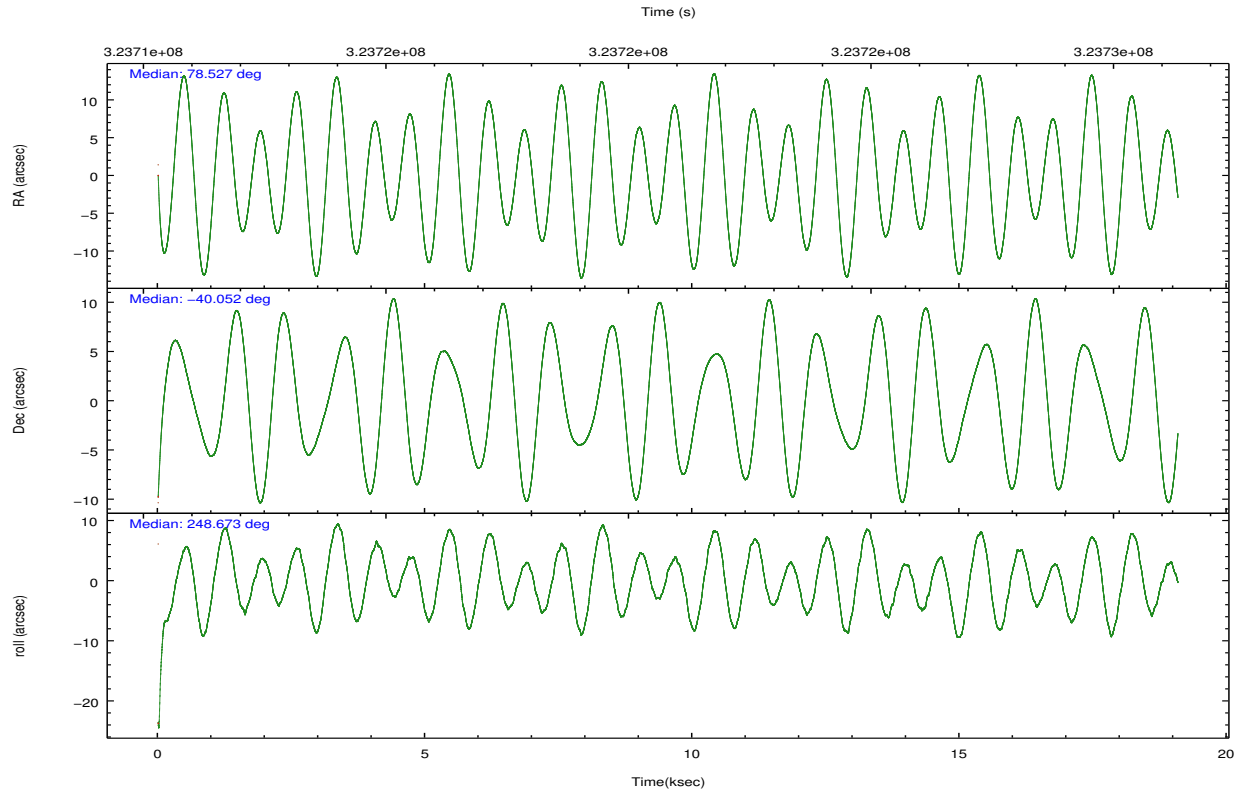
	ccd 2	ccd 3	ccd 5	ccd 6	ccd 7	ccd 8		ccd 2	ccd 3	ccd 5	ccd 6	ccd 7	ccd 8
level 1 events	157669	143641	206066	154881	213634	190063	grade 0 events	5509	5148	9948	12283	18919	13635
rejected events	142653	129533	102802	132105	93711	144153		3%	3%	4%	7%	8%	7%
rejected %	90%	90%	49%	85%	43%	75%	grade 1 events	86	110	462	112	698	178
								0%	0%	0%	0%	0%	0%
							grade 2 events	3575	3006	30783	3558	26822	10610
								2%	2%	14%	2%	12%	5%
							grade 3 events	1526	1618	4284	1720	11729	4938
								0%	1%	2%	1%	5%	2%
							grade 4 events	1639	1578	4111	1696	11597	4631
								1%	1%	1%	1%	5%	2%
							grade 5 events	5106	5852	15656	6056	18775	8632
								3%	4%	7%	3%	8%	4%
							grade 6 events	2778	2762	54183	3530	50905	12107
								1%	1%	26%	2%	23%	6%
							grade 7 events	137450	123567	86639	125926	74189	135332
								87%	86%	42%	81%	34%	71%

2.2 Compared Parameters

Parameter	Planned	Actual	Parameter	Planned	Actual
Instrument	ACIS	ACIS	Obspar format version number	7	7
Detector	ACIS-235678	ACIS-235678	Obspar file type	PREDICTED	ACTUAL
Grating	NONE	NONE	Obspar update status	NONE	UPDATED
Data mode	VFAINT	VFAINT	CCD I0 on	N	N
Observation mode	POINTING	POINTING	CCD I1 on	N	N
[deg] Pointing RA	78.521523	78.52738644578321	CCD I2 on	O1	Y
[deg] Pointing Dec	-40.025017	-40.05199898799402	CCD I3 on	O2	Y
[deg] Pointing Roll	248.513939	248.6743172832963	CCD S0 on	N	N
[mm] SIM focus pos	-0.684267	-0.6828225247311905	CCD S1 on	Y	Y
[mm] SIM defocus	0	0.001444936568705701	CCD S2 on	Y	Y
[mm] SIM translation stage pos	-190.132523	-190.1425803651734	CCD S3 on	Y	Y
[mm] SIM translation stage offset	0	0.01005778216563158	CCD S4 on	Y	Y
[s] Observation start time (MET)	323711470.184000	323710409.38739	CCD S5 on	N	N
Observation start date	2008-04-04T15:50:05	2008-04-04T15:33:29	Number of optional ACIS chips dropped	0	0
[s] Observation end time (MET)	323730363.184000	323730592.15087	On-chip summing requested	N	N
Observation end date	2008-04-04T21:04:58	2008-04-04T21:09:52	Subarray requested	NONE	NONE
Read mode	TIMED	TIMED	Alternating exposures requested	N	N
			[s] Primary exposure time	0.000000	3.2

2.3 Aspect



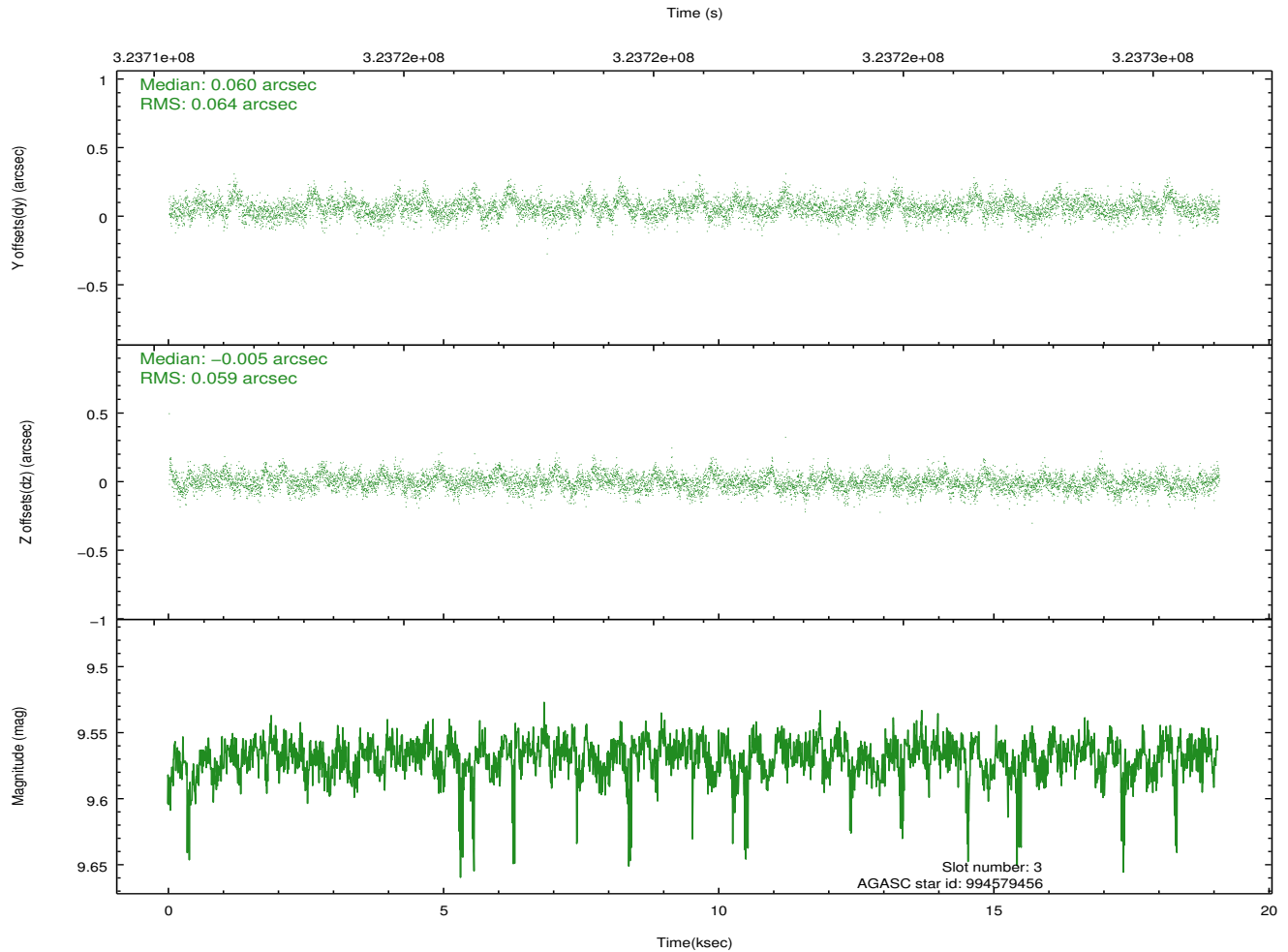
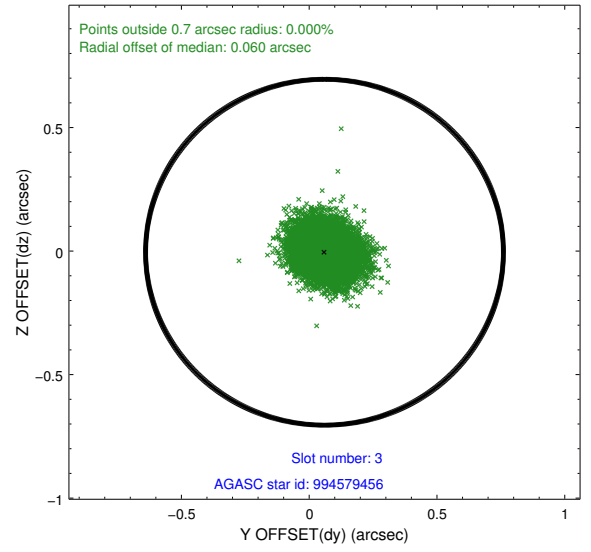
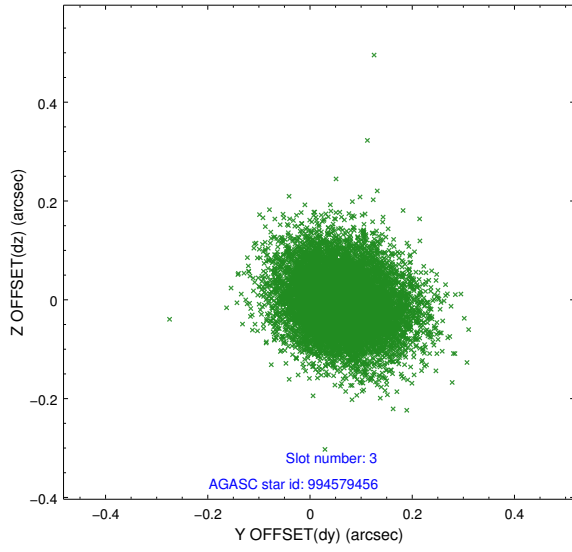


Slot Statistics

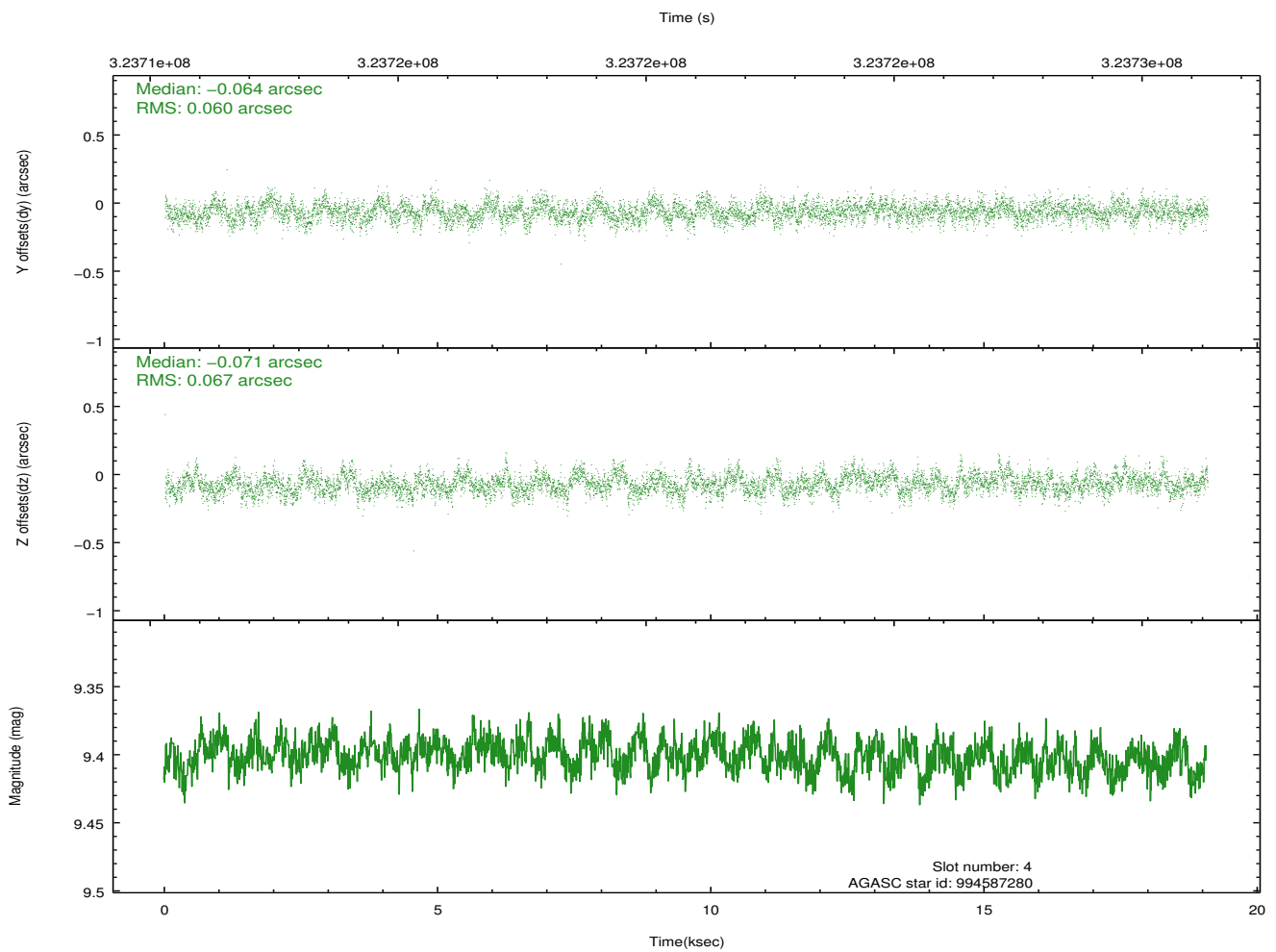
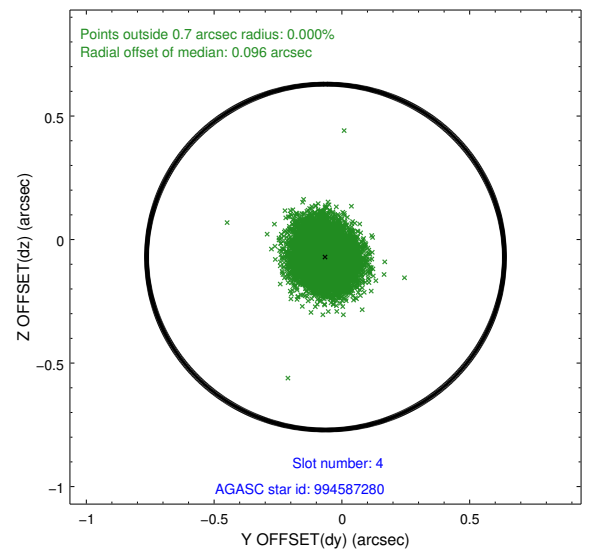
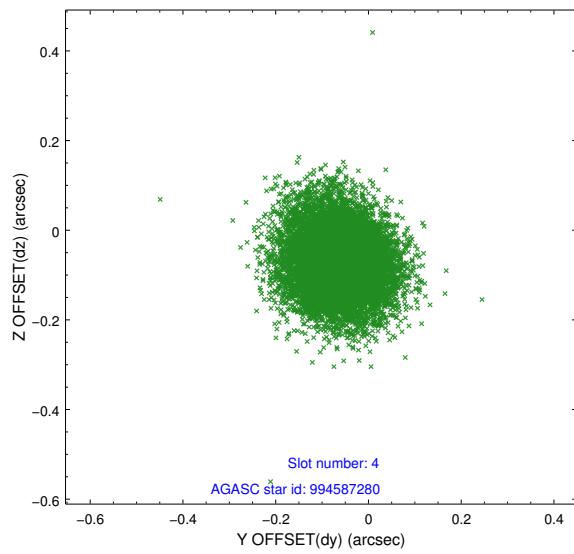
slot	status	id	mag	n_pts	med_dy	med_dz	dr1	dr2	ra	dec	mean_y	mean_z
0	FID	ACIS-S-2	7.10	4655	-0.115	-0.076	0.007	0.012	0.000000	0.000000	-767.01	-1736.53
1	FID	ACIS-S-4	7.19	4655	0.123	0.061	0.009	0.013	0.000000	0.000000	2146.43	171.84
2	FID	ACIS-S-6	7.33	4655	-0.035	0.023	0.010	0.017	0.000000	0.000000	395.34	809.45
3	GUIDE	994579456	9.57	9307	0.060	-0.005	0.092	0.152	79.112909	-39.629861	-1918.80	1006.97
4	GUIDE	994587280	9.40	9299	-0.064	-0.071	0.096	0.155	78.857559	-39.654304	-1581.38	378.80
5	GUIDE	994591280	9.46	9300	-0.181	0.036	0.107	0.173	78.571374	-39.417594	-2085.60	-671.61
6	GUIDE	994975984	9.40	9297	0.080	0.081	0.106	0.169	78.288216	-40.065810	372.99	-543.67
7	GUIDE	994979816	8.81	9295	0.103	-0.037	0.087	0.137	78.007515	-40.348161	1602.97	-884.21

2.4 Star Slots

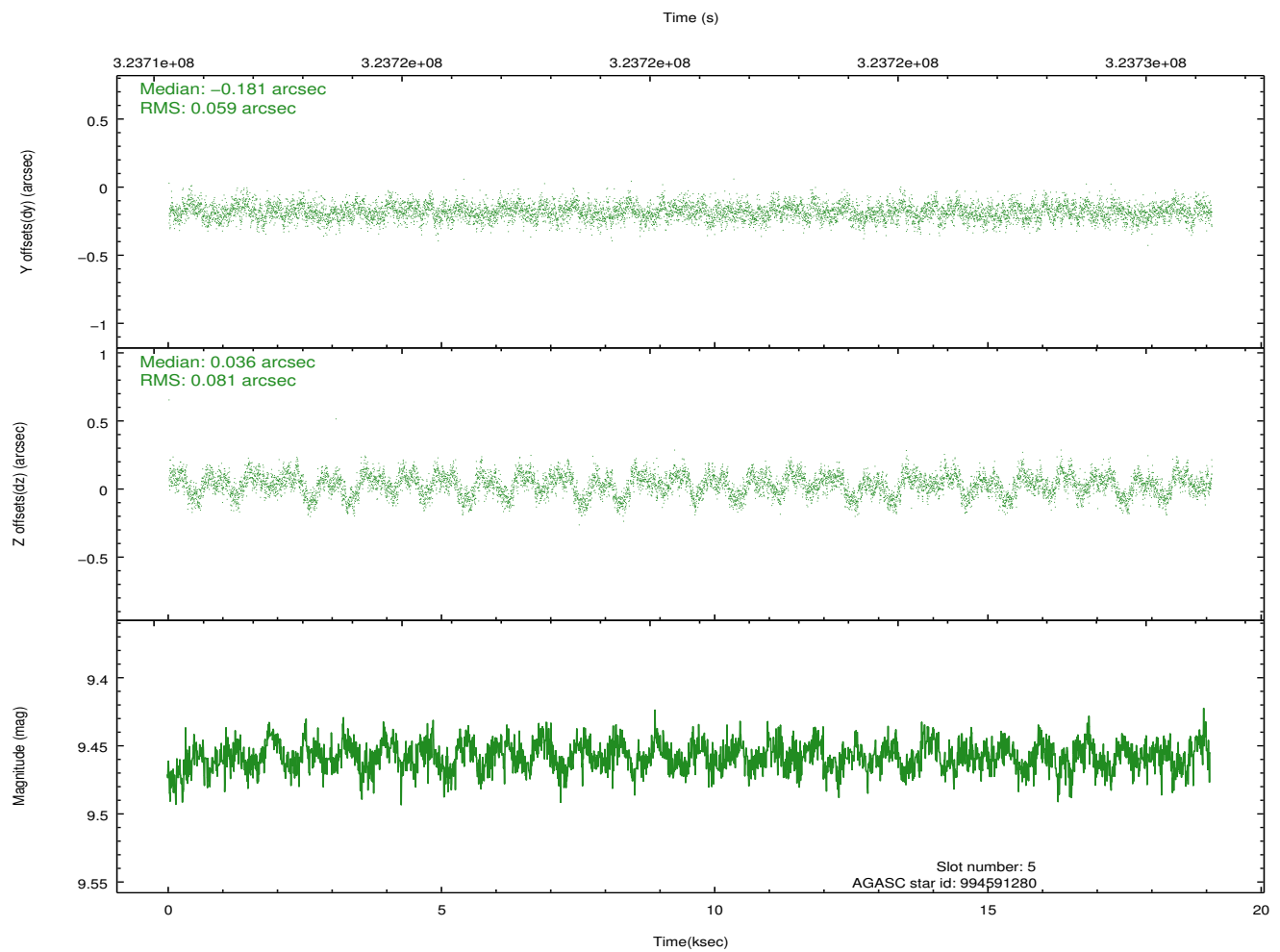
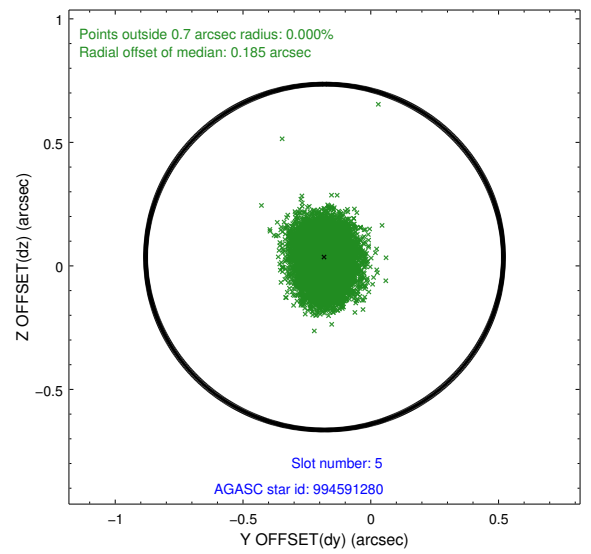
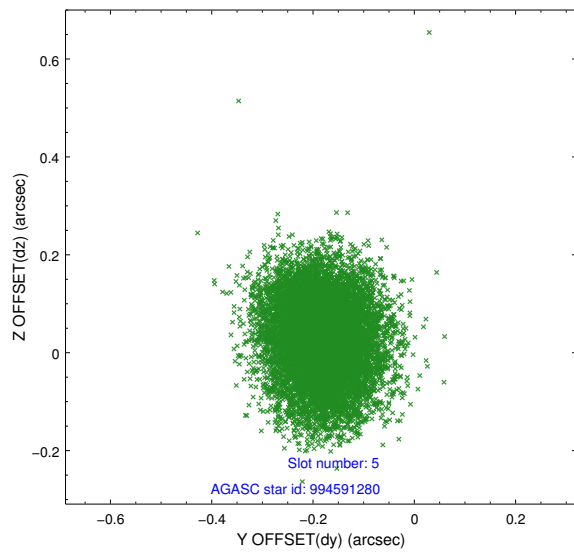
2.4.1 Slot 3



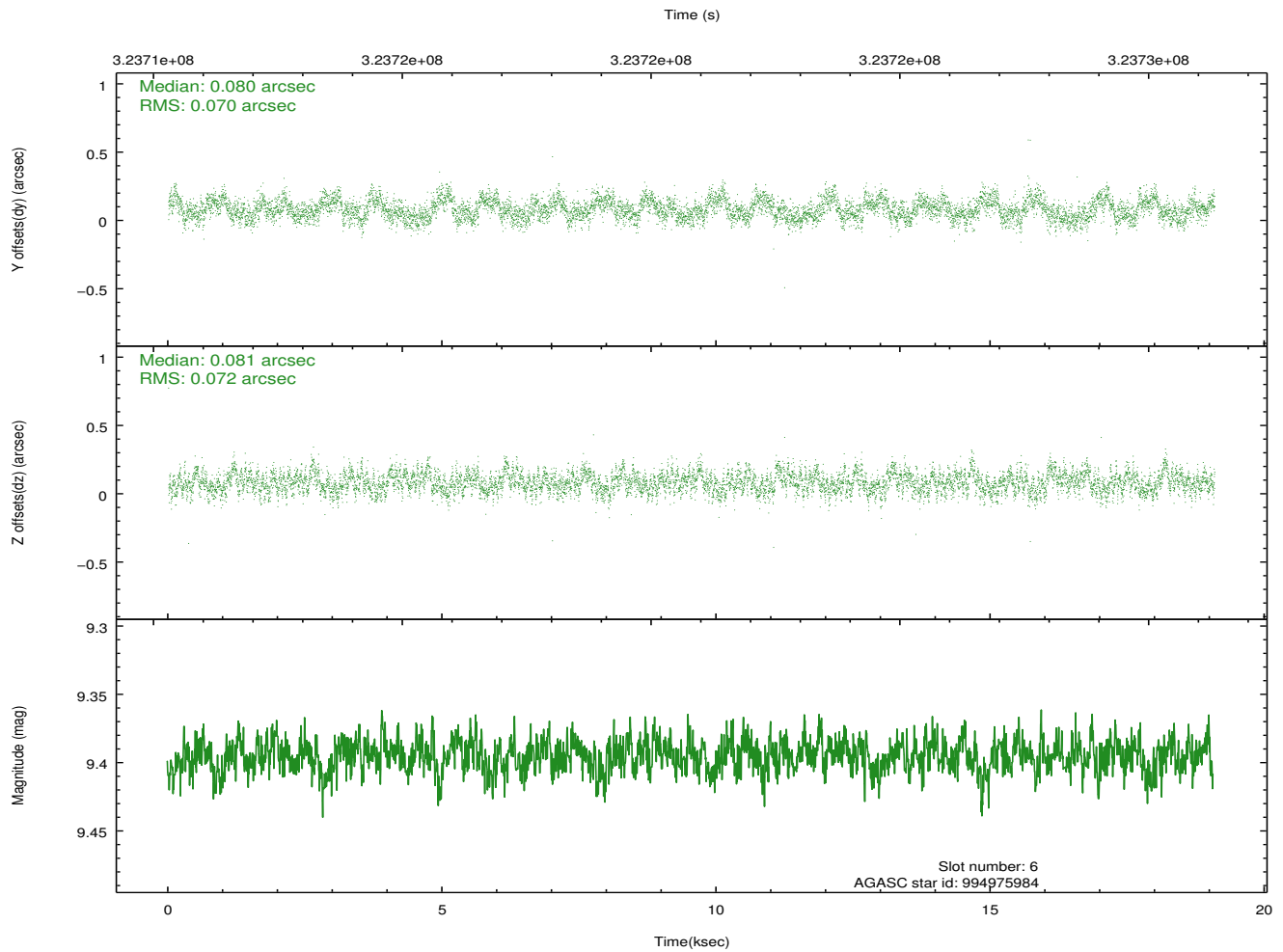
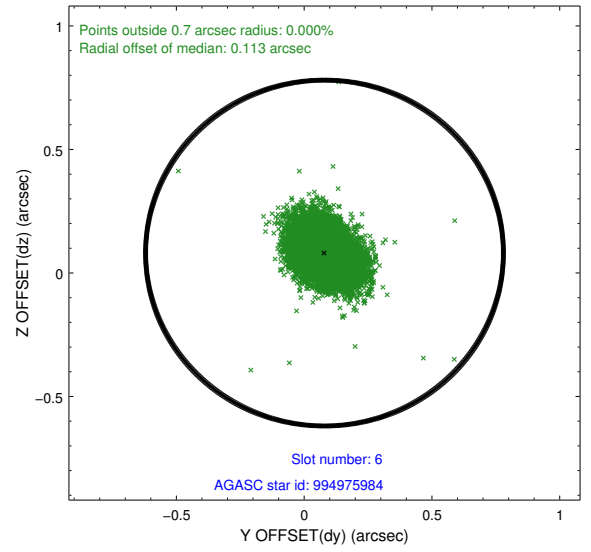
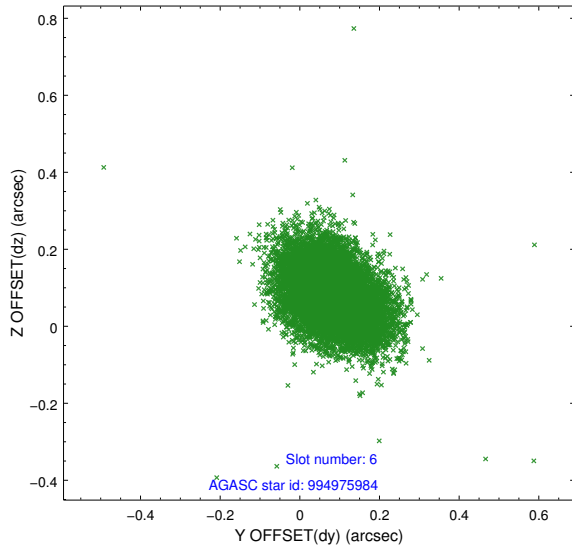
2.4.2 Slot 4



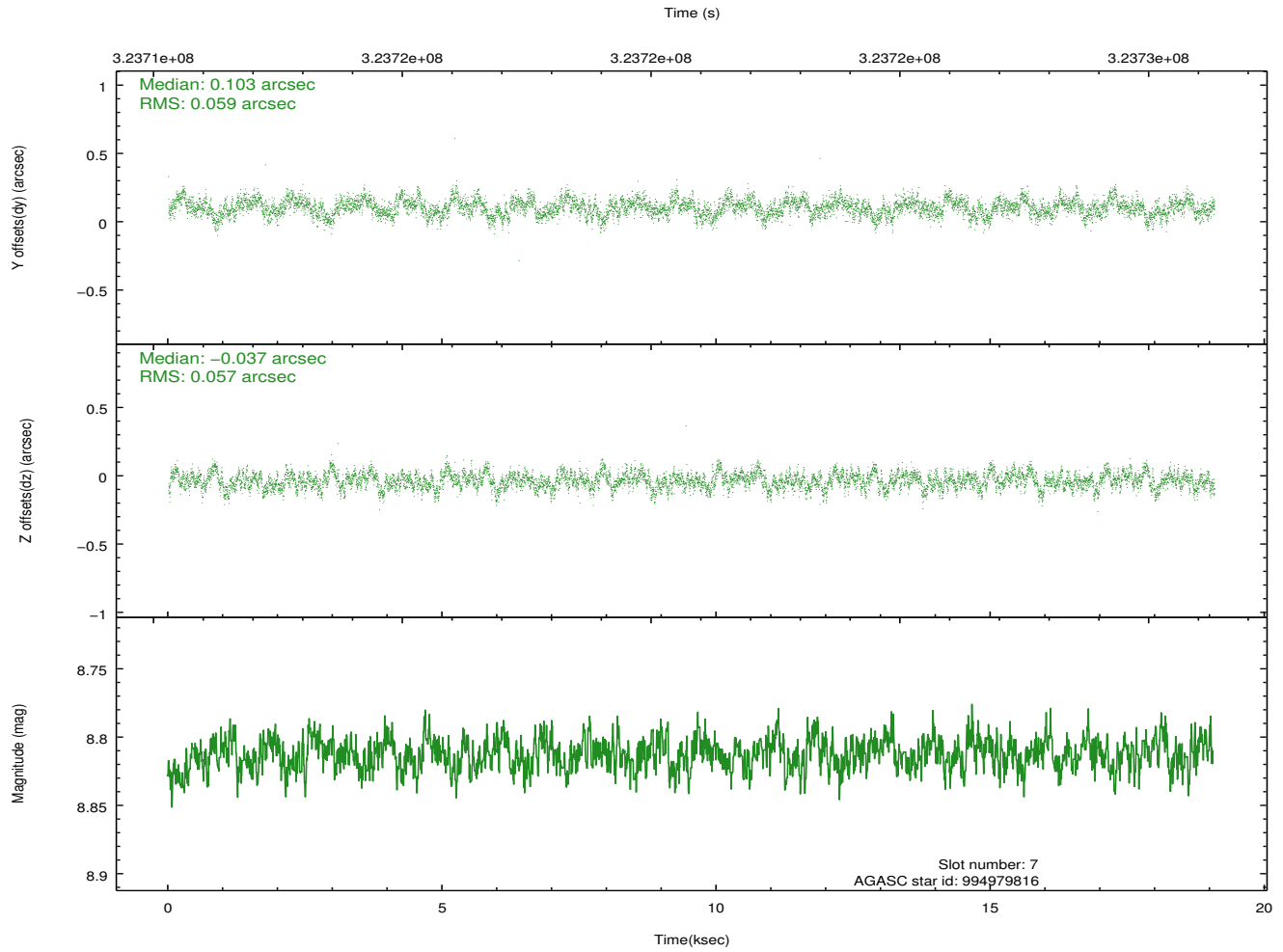
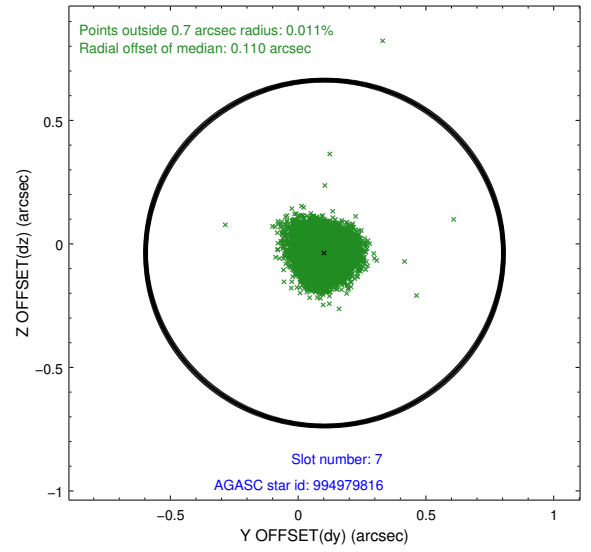
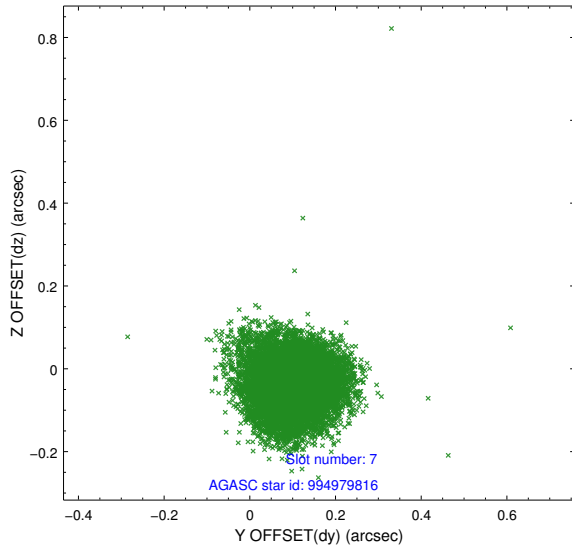
2.4.3 Slot 5



2.4.4 Slot 6

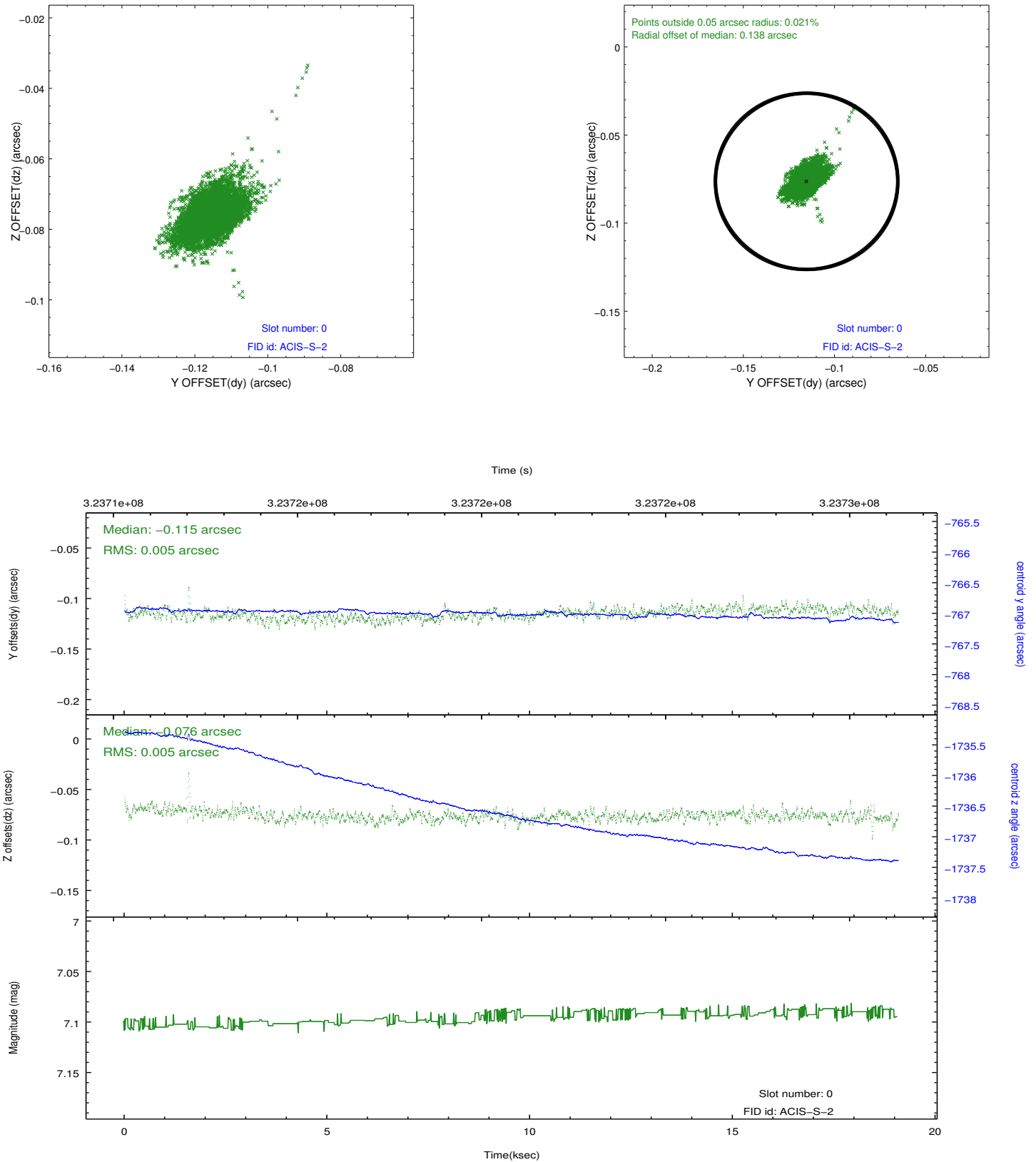


2.4.5 Slot 7

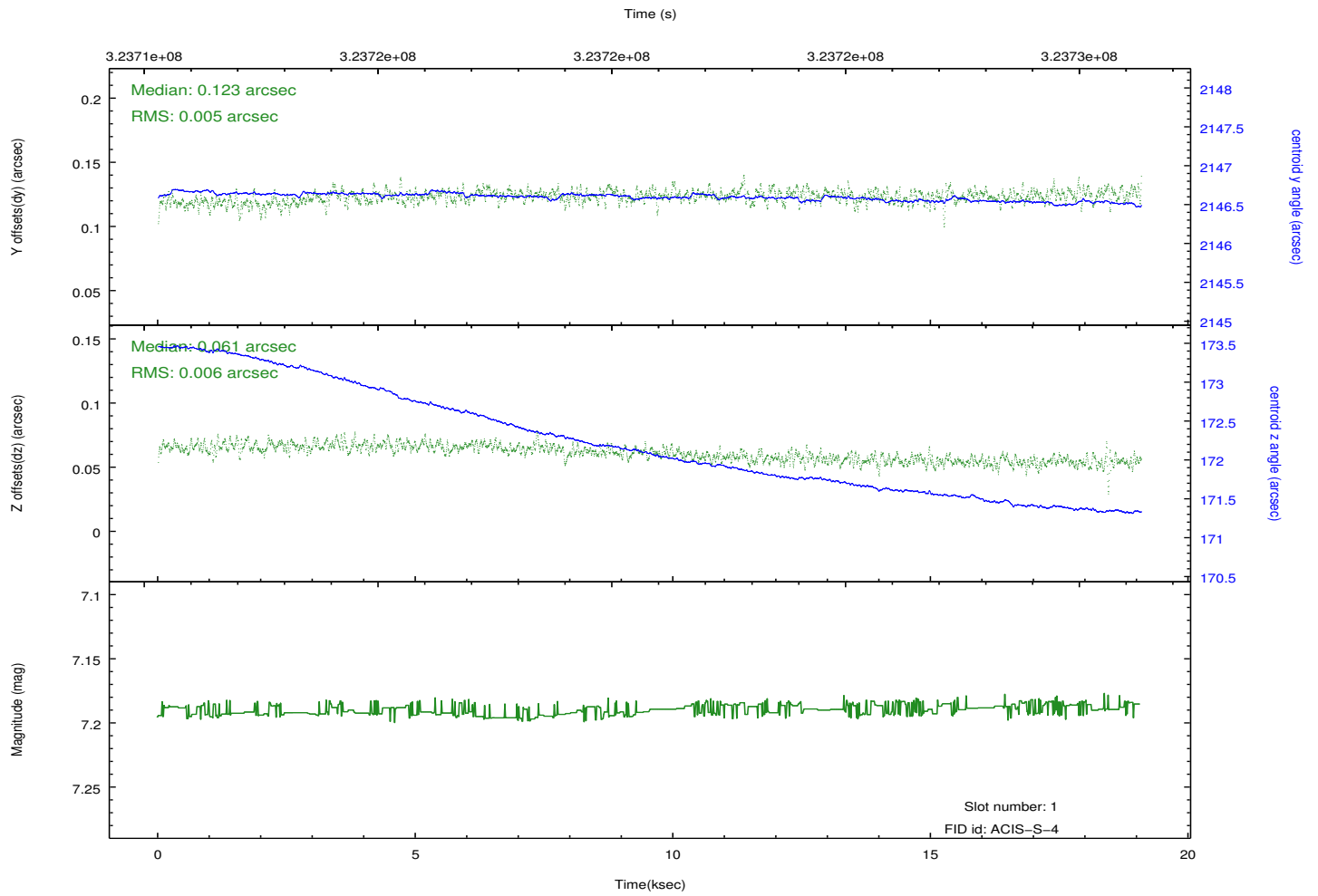
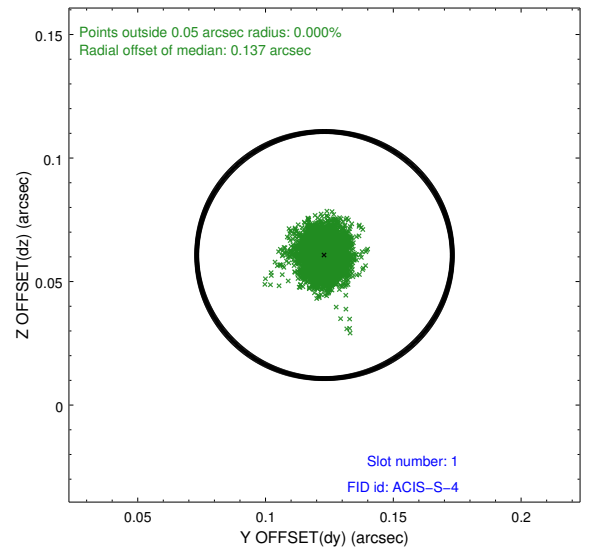
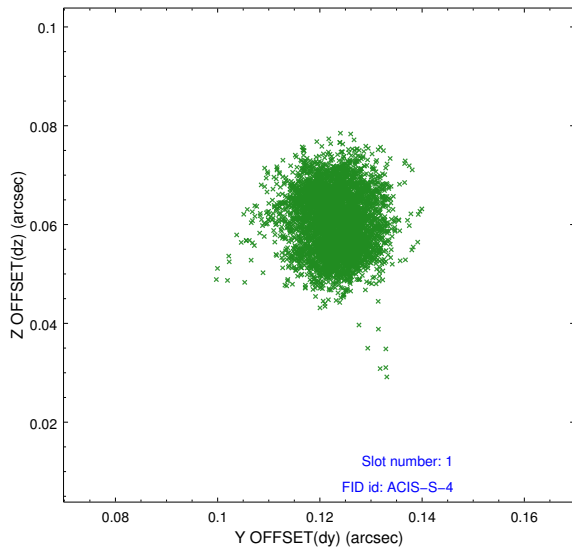


2.5 FID Slots

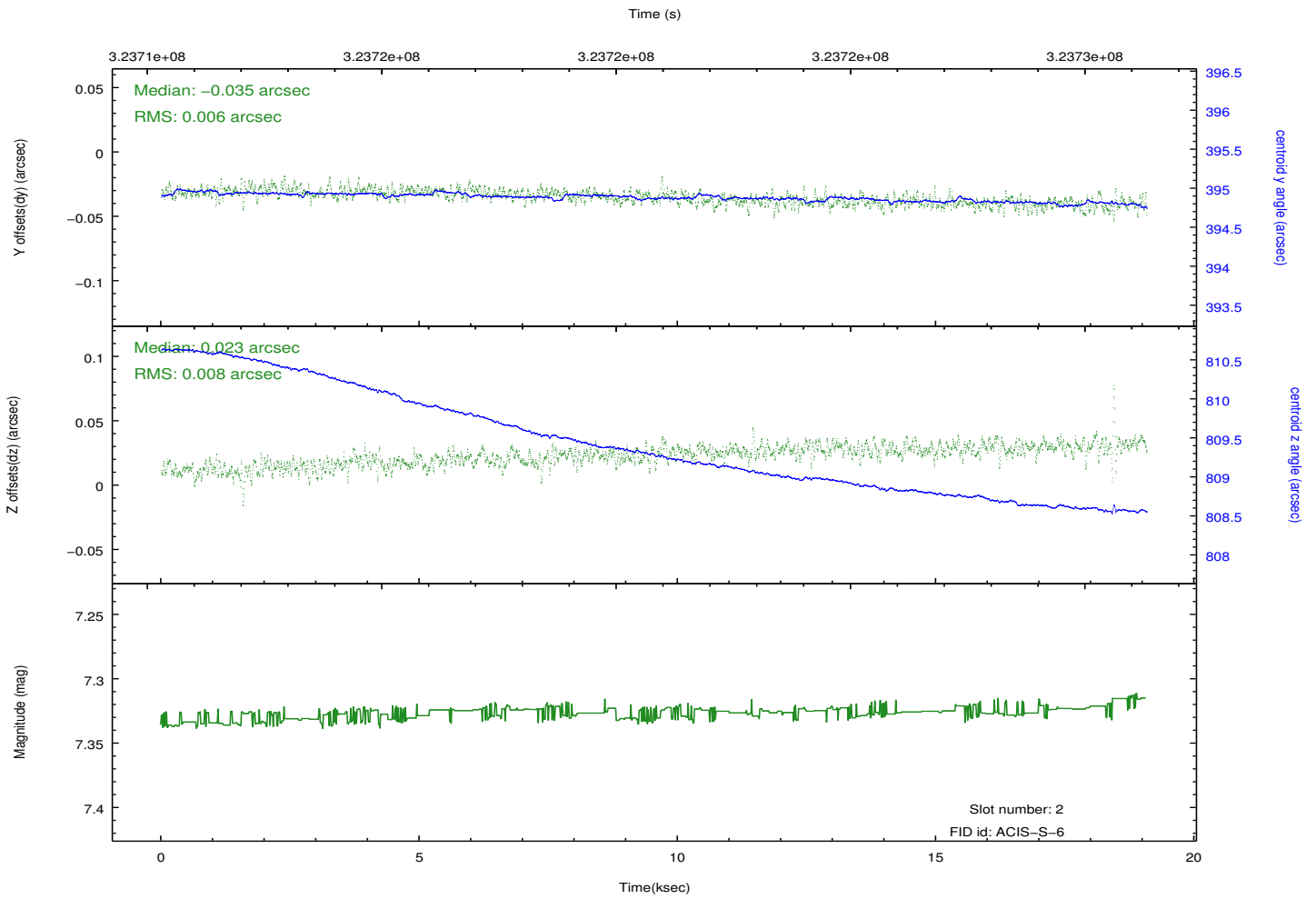
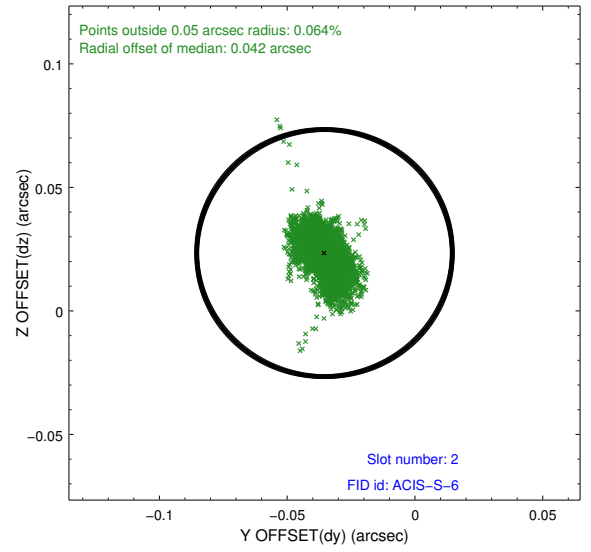
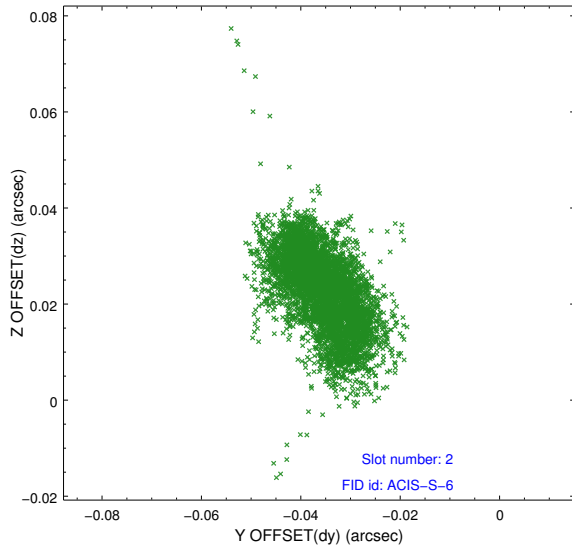
2.5.1 Slot 0



2.5.2 Slot 1



2.5.3 Slot 2



A Summary

A.1 Status

V&V Scientist	Jen Lauer
V&V Date (YYYY-MM-DD)	2012.05.15
V&V Edition	1
V&V Disposition and Status	OK
V&V Charge Time	19.0431999

A.2 Comments

Source is piled up.