

V&V Reference Report

L2 ASCDS Version : 8.4.4

Observation 9116 - L2 Version 2
Chandra X-Ray Center

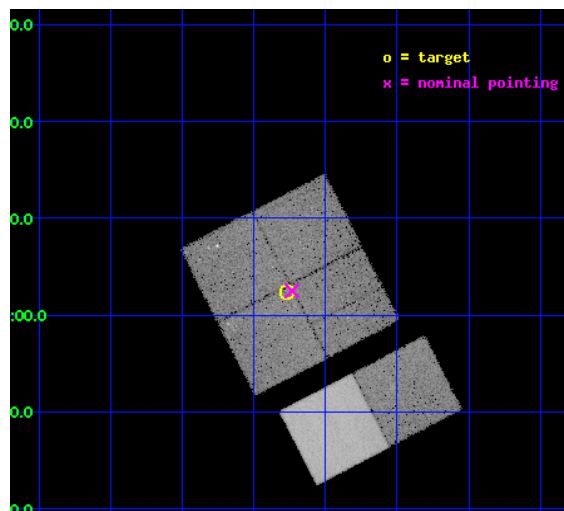
L2 Processing Date : May 17 2012

Contents

1	Front	2
2	OBI	3
2.1	OBI	3
2.1.1	Images	3
2.1.2	Bias	3
2.1.3	Parameters	4
2.1.4	Events	4
2.2	Compared Parameters	5
2.3	Aspect	6
2.4	Star Slots	9
2.4.1	Slot 3	9
2.4.2	Slot 4	10
2.4.3	Slot 5	11
2.4.4	Slot 6	12
2.4.5	Slot 7	13
2.5	FID Slots	14
2.5.1	Slot 0	14
2.5.2	Slot 1	15
2.5.3	Slot 2	16
A	Summary	17
A.1	Status	17
A.2	Comments	17

1 Front

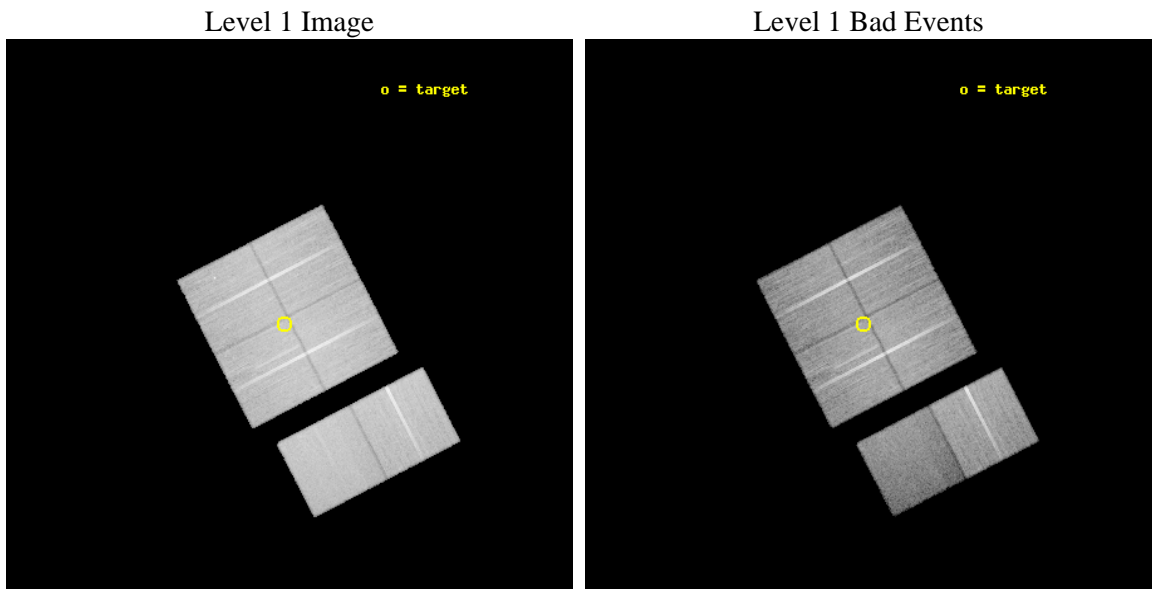
seq_num	500978	Sequence number
obs_id	9116	Observation id
title	Determining the nature of the quasi-pointlike TeV source HESS J1858+020	Proposal title
observer	Dr Regis Terrier	Principal investigator
object	HESS J1858+020	Source name
dtcycle	0	
cycle	P	events from which exps? Prim/Second/Both
ra_targ	284.566667	Observer's specified target RA [deg]
dec_targ	2.040278	Observer's specified target Dec [deg]
ra_nom	284.55871296599	Nominal RA [deg]
dec_nom	2.041686028816	Nominal Dec [deg]
roll_nom	152.66300317472	Nominal Roll [deg]
revision	2	Processing version of data
ontime	30156.758897305	Sum of GTIs [s]
livelime	29774.895857927	Livetime [s]
ontime0	30159.999887705	Sum of GTIs [s]
ontime1	30153.517867088	Sum of GTIs [s]
ontime2	30153.517877162	Sum of GTIs [s]
ontime3	30156.758897305	Sum of GTIs [s]
ontime6	30159.999887705	Sum of GTIs [s]
ontime7	30159.999887705	Sum of GTIs [s]
l2events	198164	Number of level 2 events



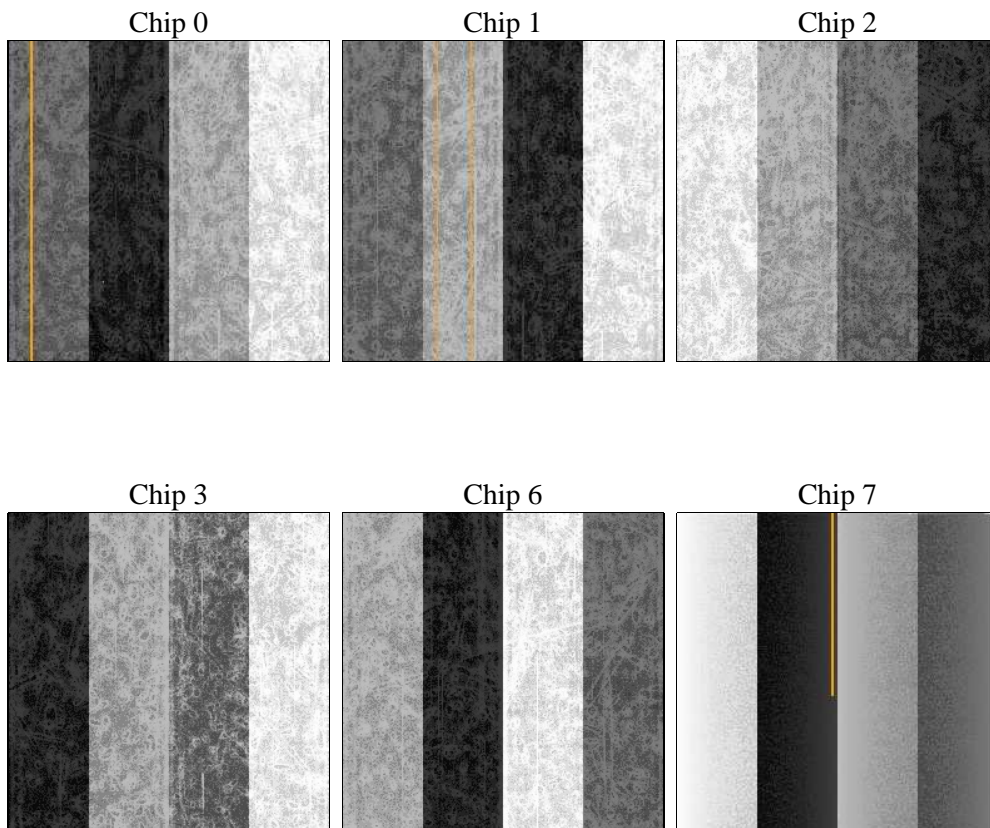
2 OBI

2.1 OBI

2.1.1 Images



2.1.2 Bias



2.1.3 Parameters

obi_num	0	Obi number	sched_exp_time	30000.000000	[s] Scheduled observation exposure time
ascdsver	8.4.4	Processing system revision	ontime	30156.758897305	Sum of GTIs [s]
caldbver	4.4.9	 	ontime0	30159.999887705	Sum of GTIs [s]
date	2012-05-17T02:59:35	Date and time of file creation	ontime1	30153.517867088	Sum of GTIs [s]
revision	2	Processing version of data	ontime2	30153.517877162	Sum of GTIs [s]
			ontime3	30156.758897305	Sum of GTIs [s]
			ontime6	30159.999887705	Sum of GTIs [s]
			ontime7	30159.999887705	Sum of GTIs [s]
			l1events	1367428	Number of level 1 events

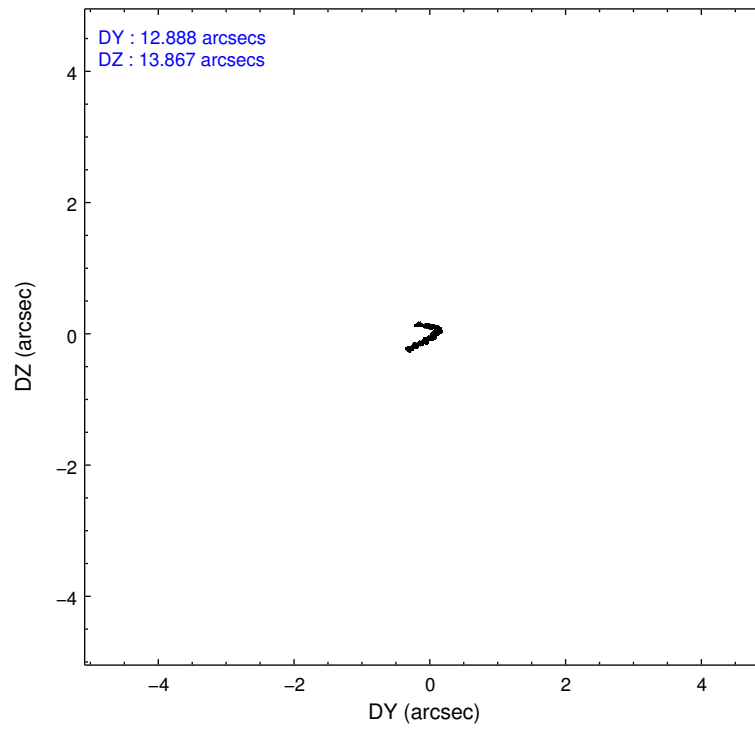
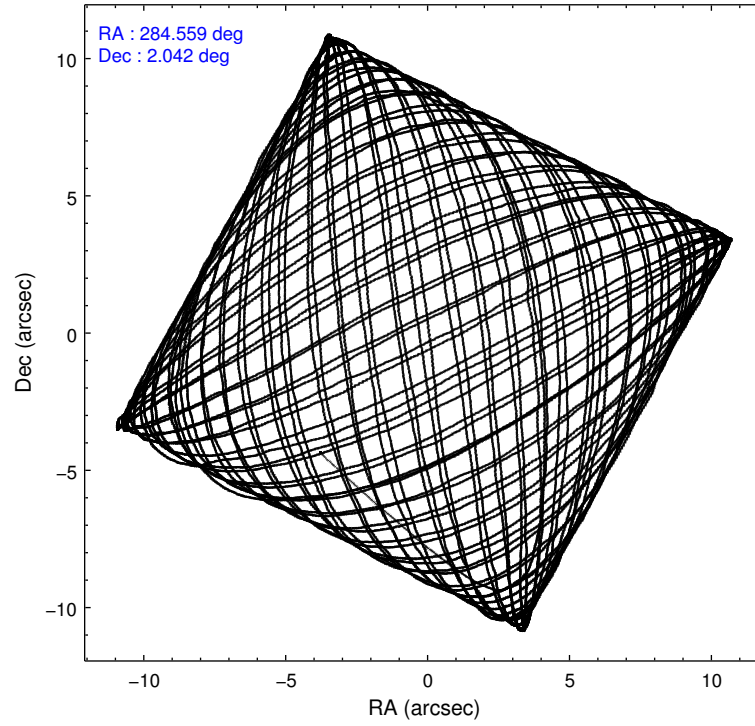
2.1.4 Events

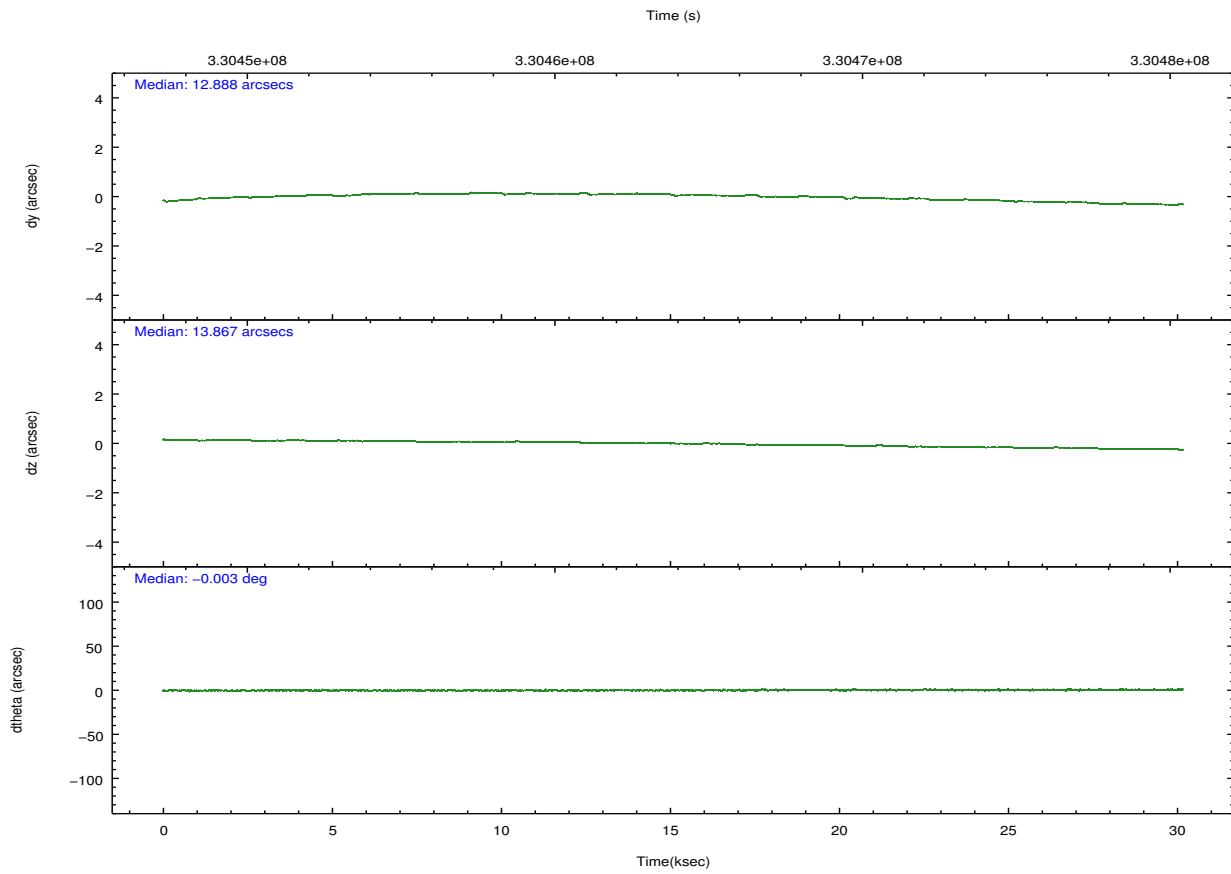
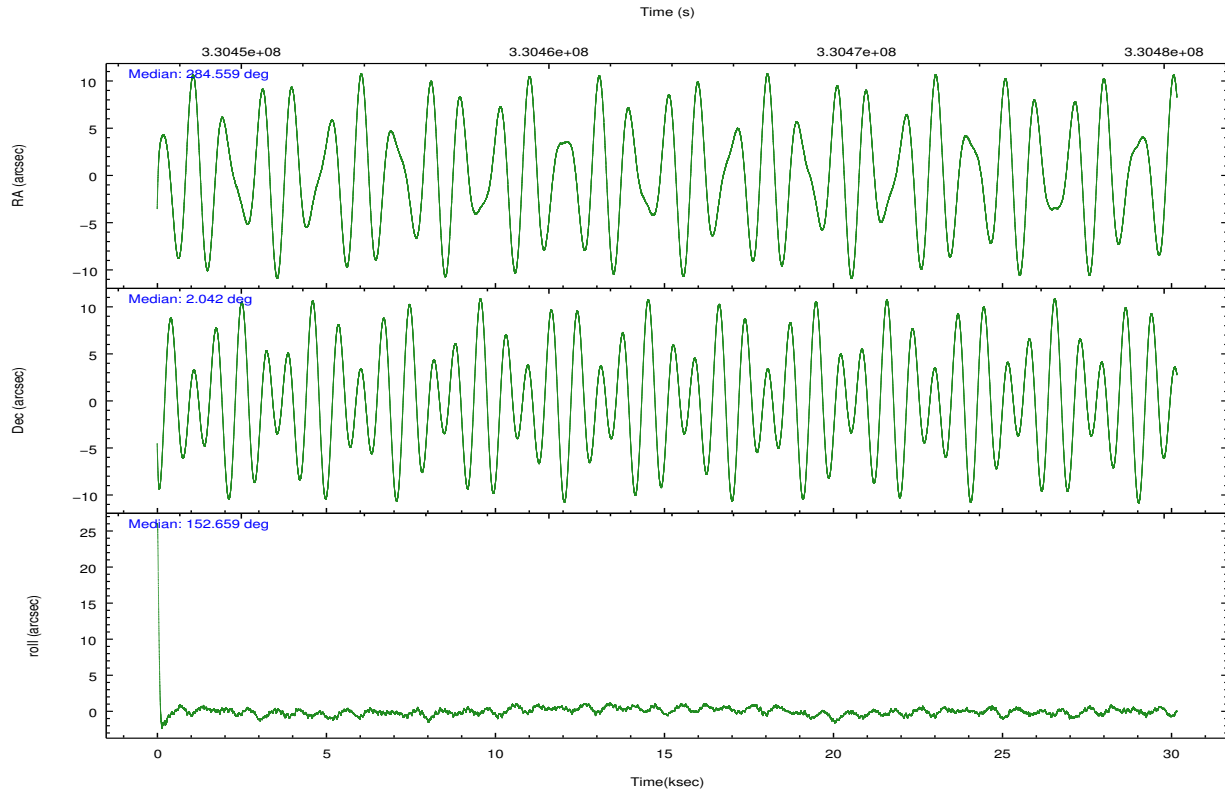
	ccd 0	ccd 1	ccd 2	ccd 3	ccd 6	ccd 7		ccd 0	ccd 1	ccd 2	ccd 3	ccd 6	ccd 7
level 1 events	215000	211831	241868	235566	237158	226005	grade 0 events	9433	9312	9078	8968	8966	11216
rejected events	191545	187772	219436	213453	213684	120075		4%	4%	3%	3%	3%	4%
rejected %	89%	88%	90%	90%	90%	53%	grade 1 events	136	139	141	126	117	342
								0%	0%	0%	0%	0%	0%
							grade 2 events	5702	5376	5597	5033	5491	23899
								2%	2%	2%	2%	2%	10%
							grade 3 events	2728	2852	2325	2401	2739	10606
								1%	1%	0%	1%	1%	4%
							grade 4 events	2393	2720	2423	2463	2585	10260
								1%	1%	1%	1%	1%	4%
							grade 5 events	7051	7595	6488	8210	8276	24435
								3%	3%	2%	3%	3%	10%
							grade 6 events	4317	4946	4022	4271	4810	55417
								2%	2%	1%	1%	2%	24%
							grade 7 events	183240	178891	211794	204094	204174	89830
								85%	84%	87%	86%	86%	39%

2.2 Compared Parameters

Parameter	Planned	Actual	Parameter	Planned	Actual
Instrument	ACIS	ACIS	Obspar format version number	7	7
Detector	ACIS-012367	ACIS-012367	Obspar file type	PREDICTED	ACTUAL
Grating	NONE	NONE	Obspar update status	NONE	UPDATED
Data mode	VFAINT	VFAINT	CCD I0 on	Y	Y
Observation mode	POINTING	POINTING	CCD I1 on	Y	Y
[deg] Pointing RA	284.586184	284.5587129659865	CCD I2 on	Y	Y
[deg] Pointing Dec	2.043075	2.041686028815983	CCD I3 on	Y	Y
[deg] Pointing Roll	152.453327	152.6630031747221	CCD S0 on	N	N
[mm] SIM focus pos	-0.782348	-0.7809083437167272	CCD S1 on	N	N
[mm] SIM defocus	0	0.001439871863259334	CCD S2 on	O1	Y
[mm] SIM translation stage pos	-233.592463	-233.5874344608287	CCD S3 on	O2	Y
[mm] SIM translation stage offset	0	-0.005018542100998502	CCD S4 on	N	N
[s] Observation start time (MET)	330448929.184000	330447146.87845	CCD S5 on	N	N
Observation start date	2008-06-21T15:21:04	2008-06-21T14:52:26	Number of optional ACIS chips dropped	0	0
[s] Observation end time (MET)	330478929.184000	330479623.49254	On-chip summing requested	N	N
Observation end date	2008-06-21T23:41:04	2008-06-21T23:53:43	Subarray requested	NONE	NONE
Read mode	TIMED	TIMED	Alternating exposures requested	N	N
			[s] Primary exposure time	0.000000	3.2

2.3 Aspect



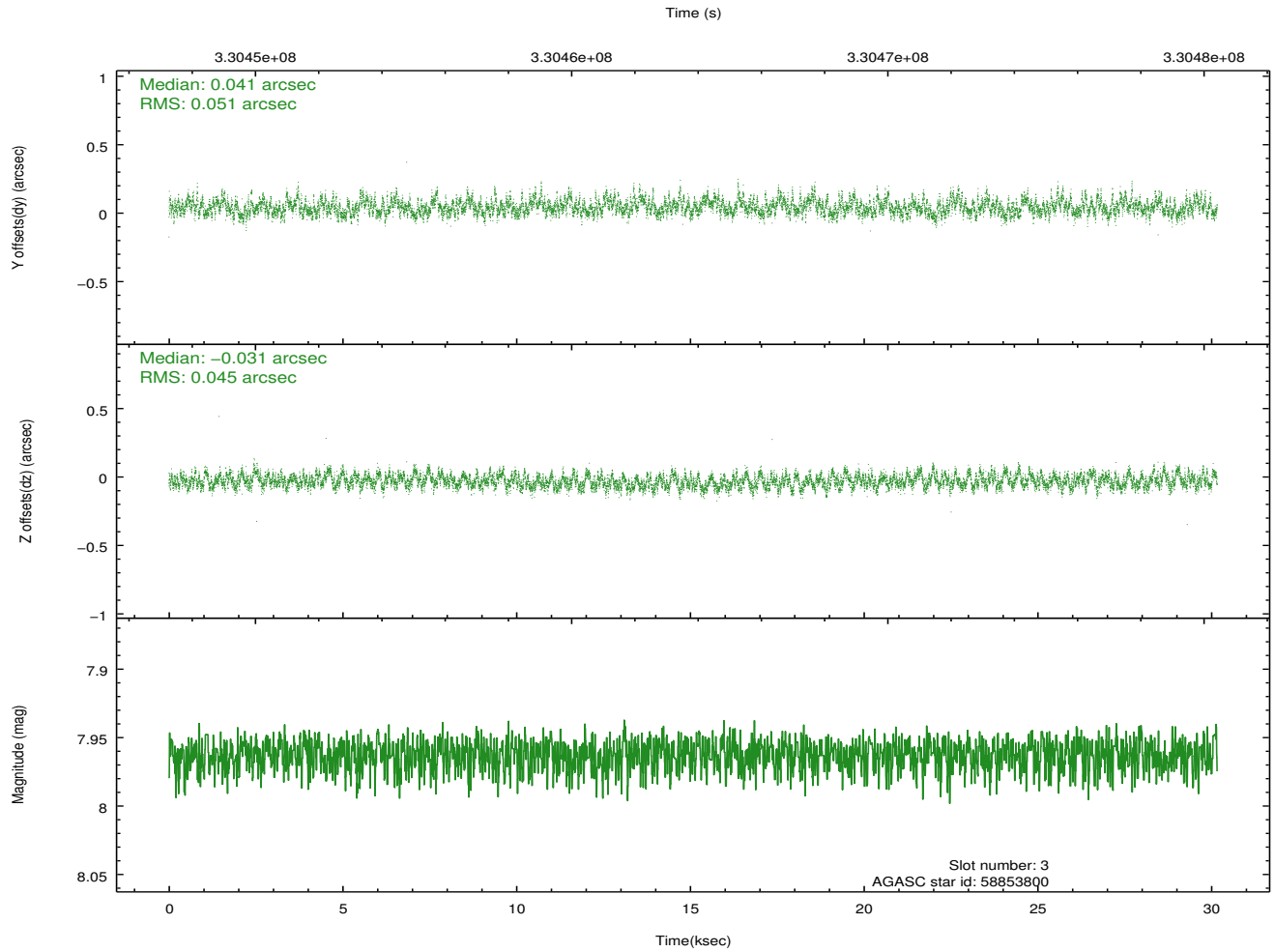
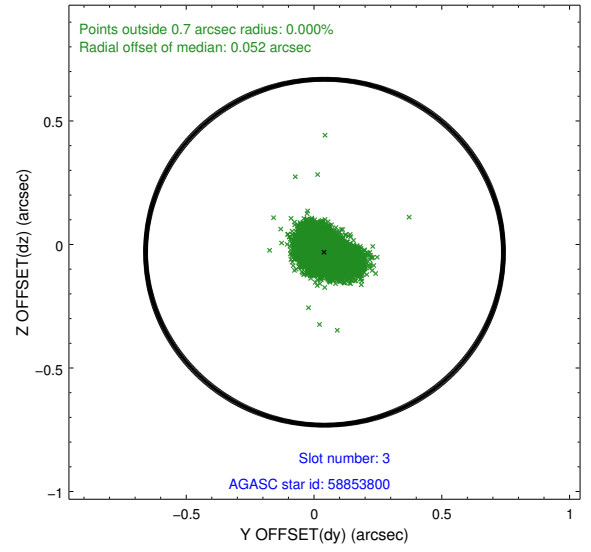
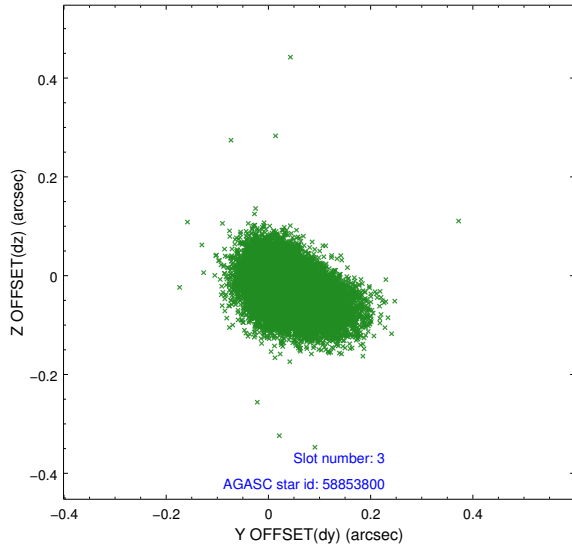


Slot Statistics

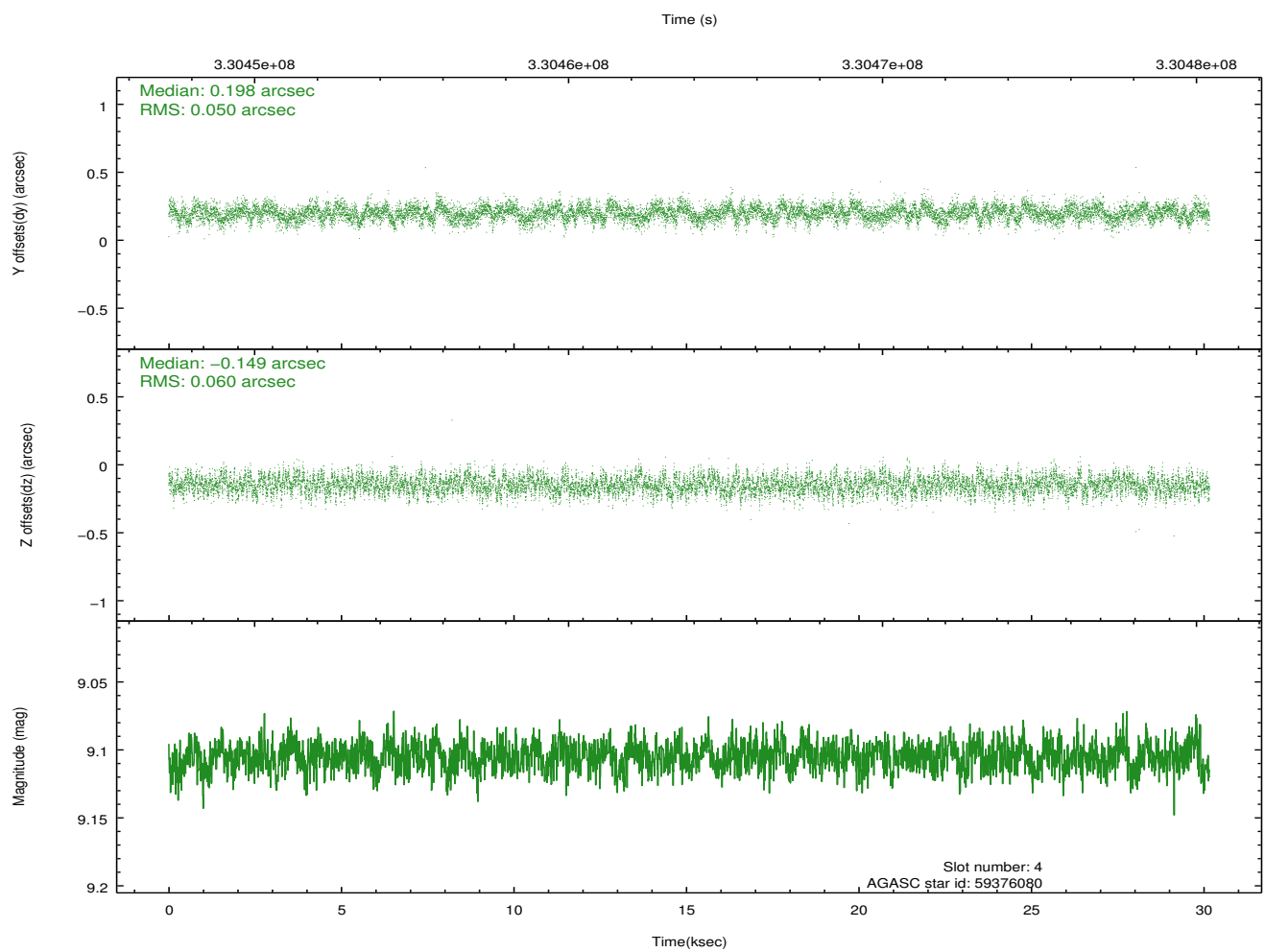
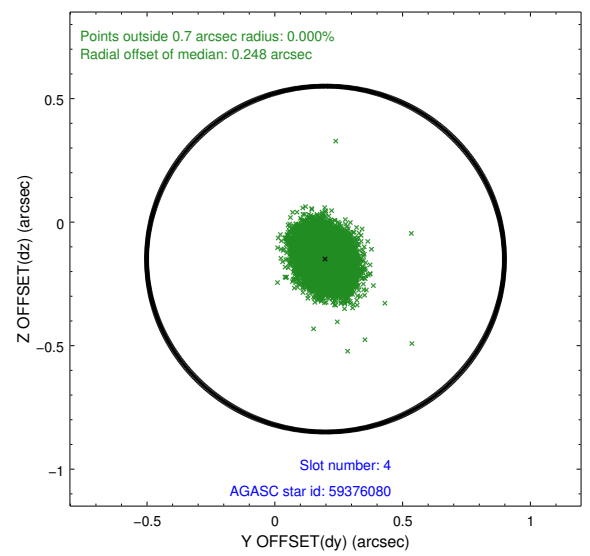
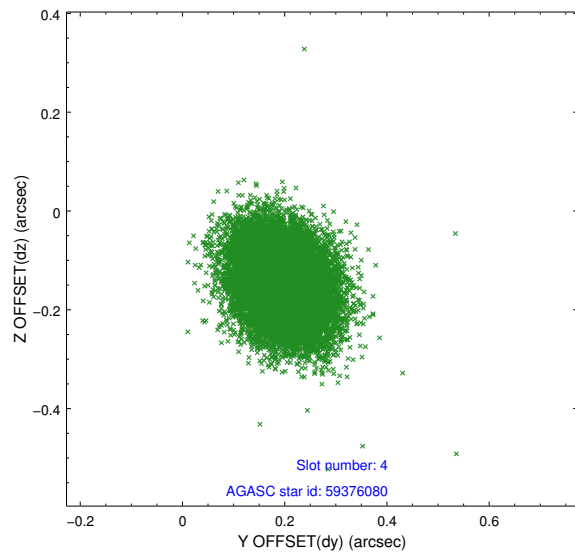
slot	status	id	mag	n_pts	med_dy	med_dz	dr1	dr2	ra	dec	mean_y	mean_z
0	FID	ACIS-I-1	7.03	7357	0.018	0.026	0.010	0.018	0.000000	0.000000	926.69	-837.37
1	FID	ACIS-I-5	7.02	7358	-0.185	0.035	0.009	0.015	0.000000	0.000000	-1821.61	1060.05
2	FID	ACIS-I-6	7.02	7358	0.076	0.008	0.009	0.014	0.000000	0.000000	392.18	1704.64
3	GUIDE	58853800	7.96	14716	0.041	-0.031	0.072	0.117	284.849220	1.406285	-1899.37	1594.88
4	GUIDE	59376080	9.11	14698	0.198	-0.149	0.083	0.135	284.651749	1.918668	-415.98	288.24
5	GUIDE	59376552	7.12	14714	-0.237	0.207	0.049	0.083	284.421699	2.701942	1621.57	-1828.87
6	GUIDE	59377976	8.73	14712	-0.066	-0.009	0.073	0.117	284.180813	2.207923	1567.76	148.37
7	GUIDE	61083696	6.84	14716	0.060	-0.020	0.056	0.091	285.305341	2.033213	-2309.60	-1165.58

2.4 Star Slots

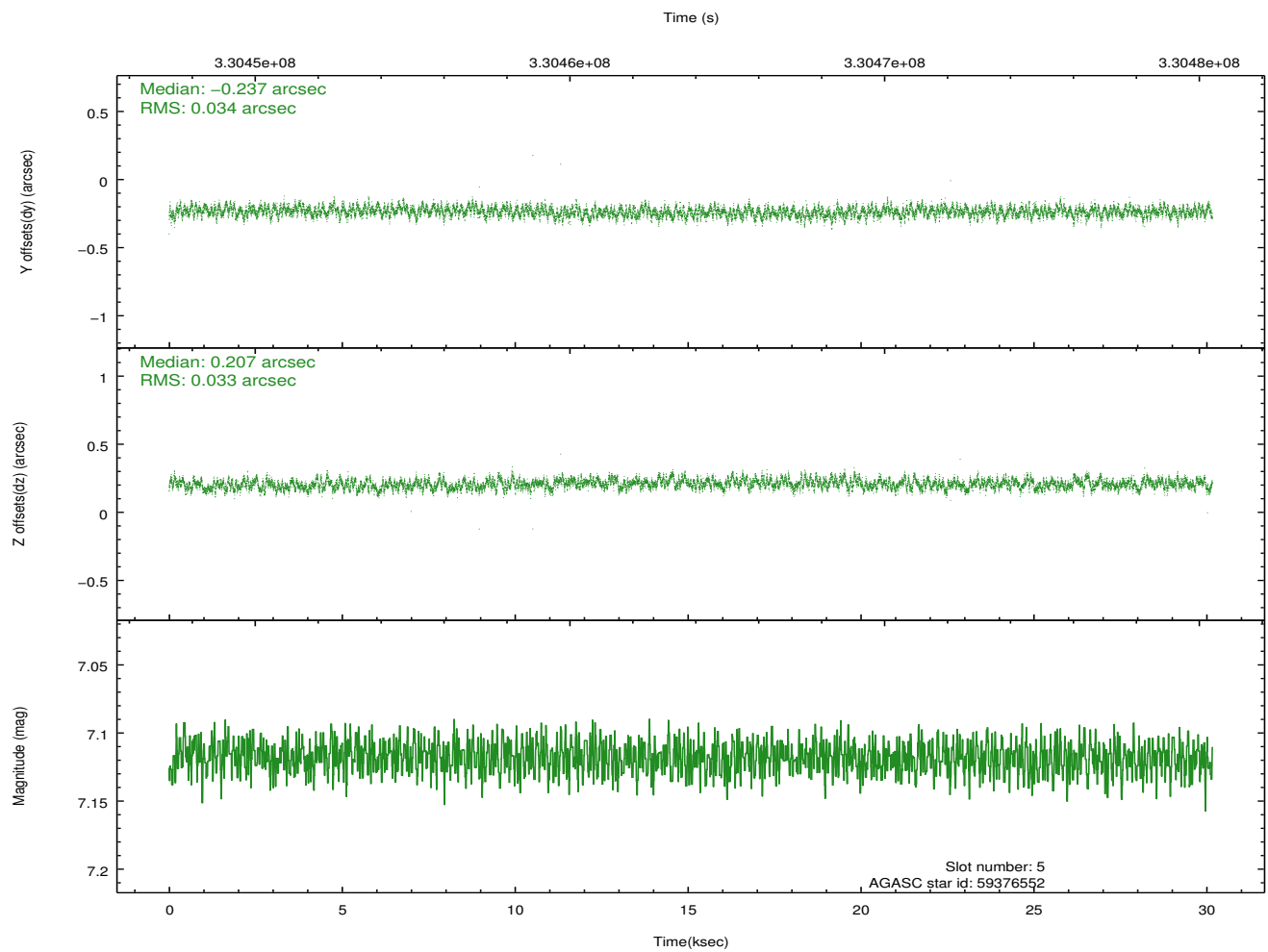
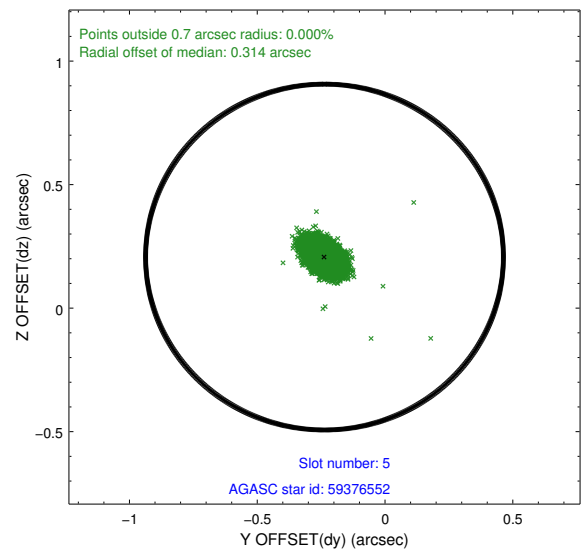
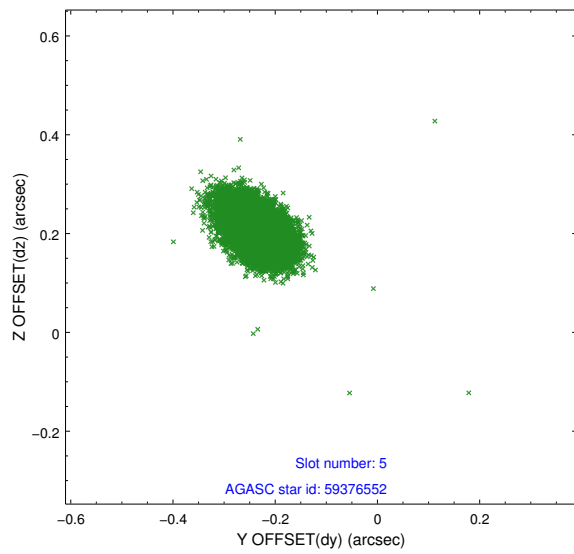
2.4.1 Slot 3



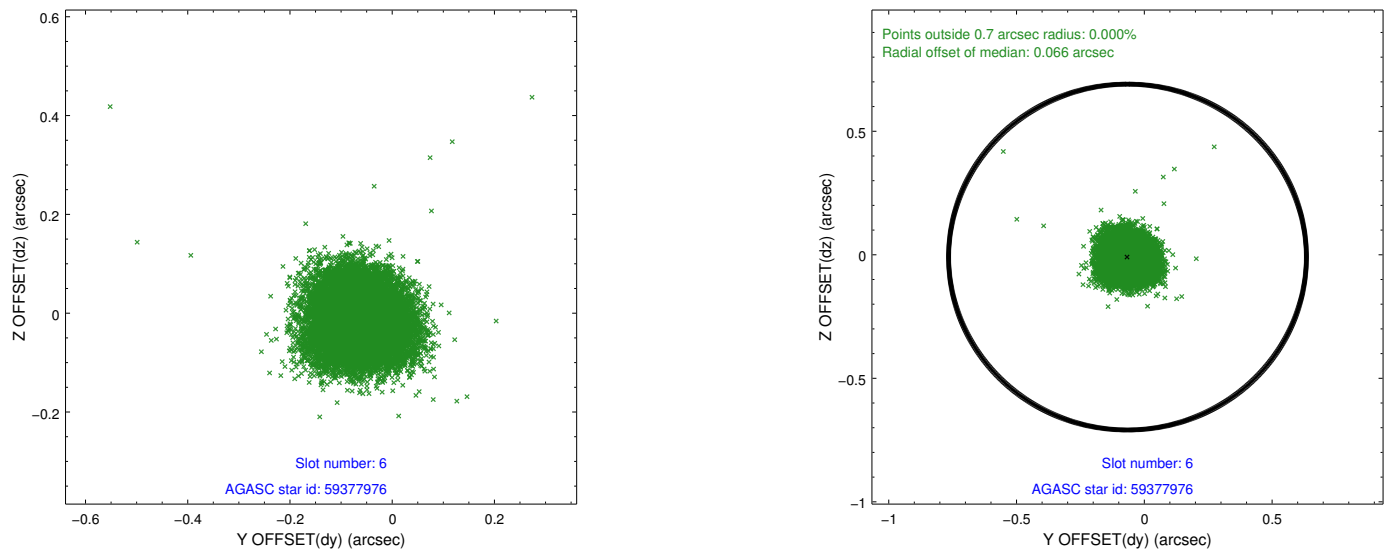
2.4.2 Slot 4



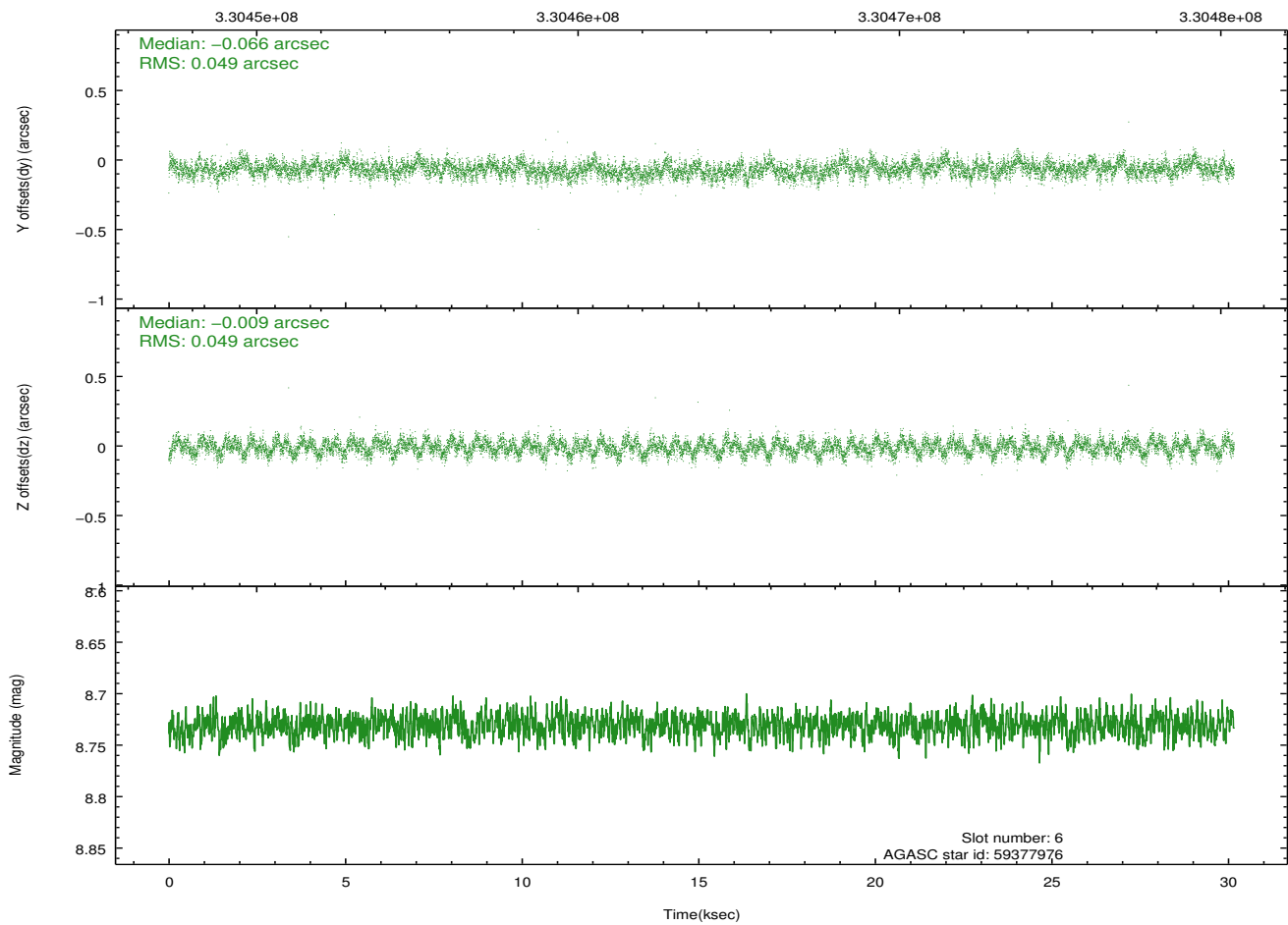
2.4.3 Slot 5



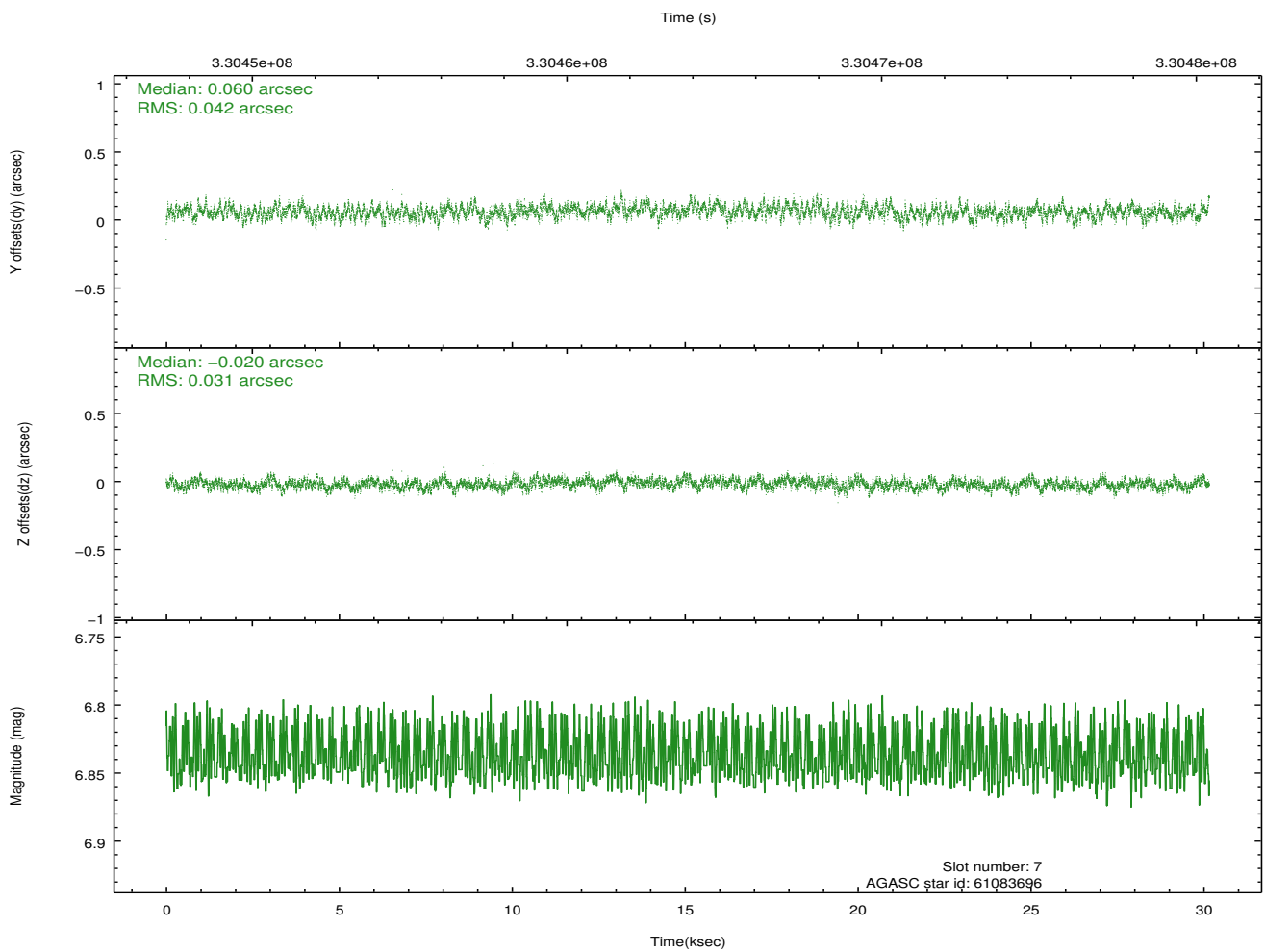
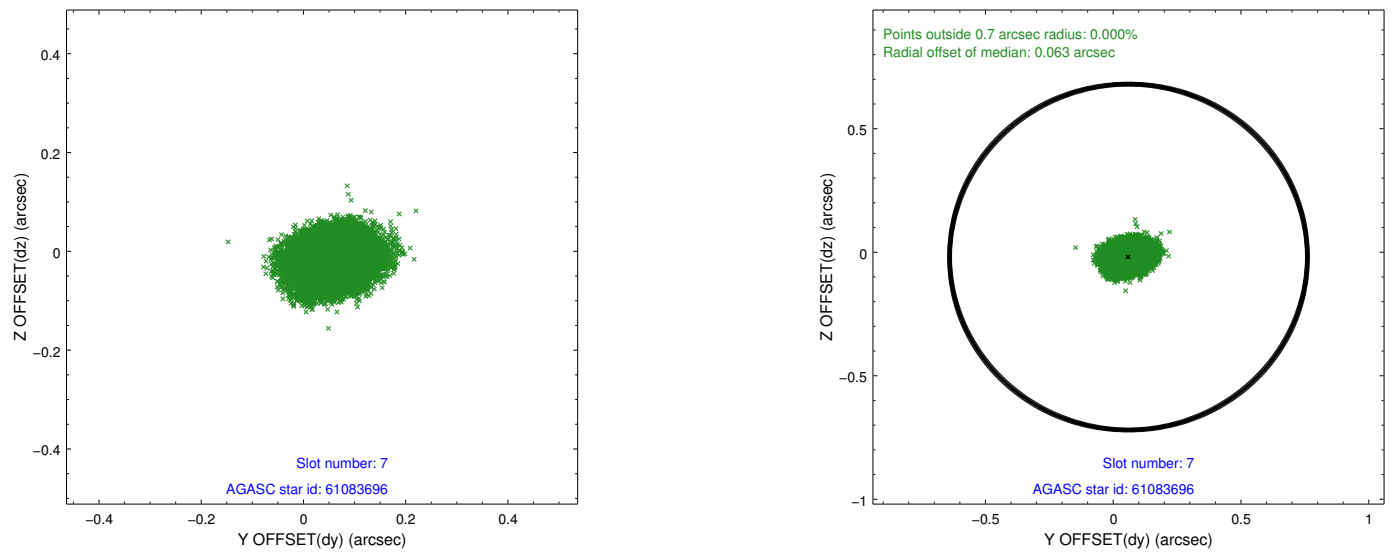
2.4.4 Slot 6



Time (s)

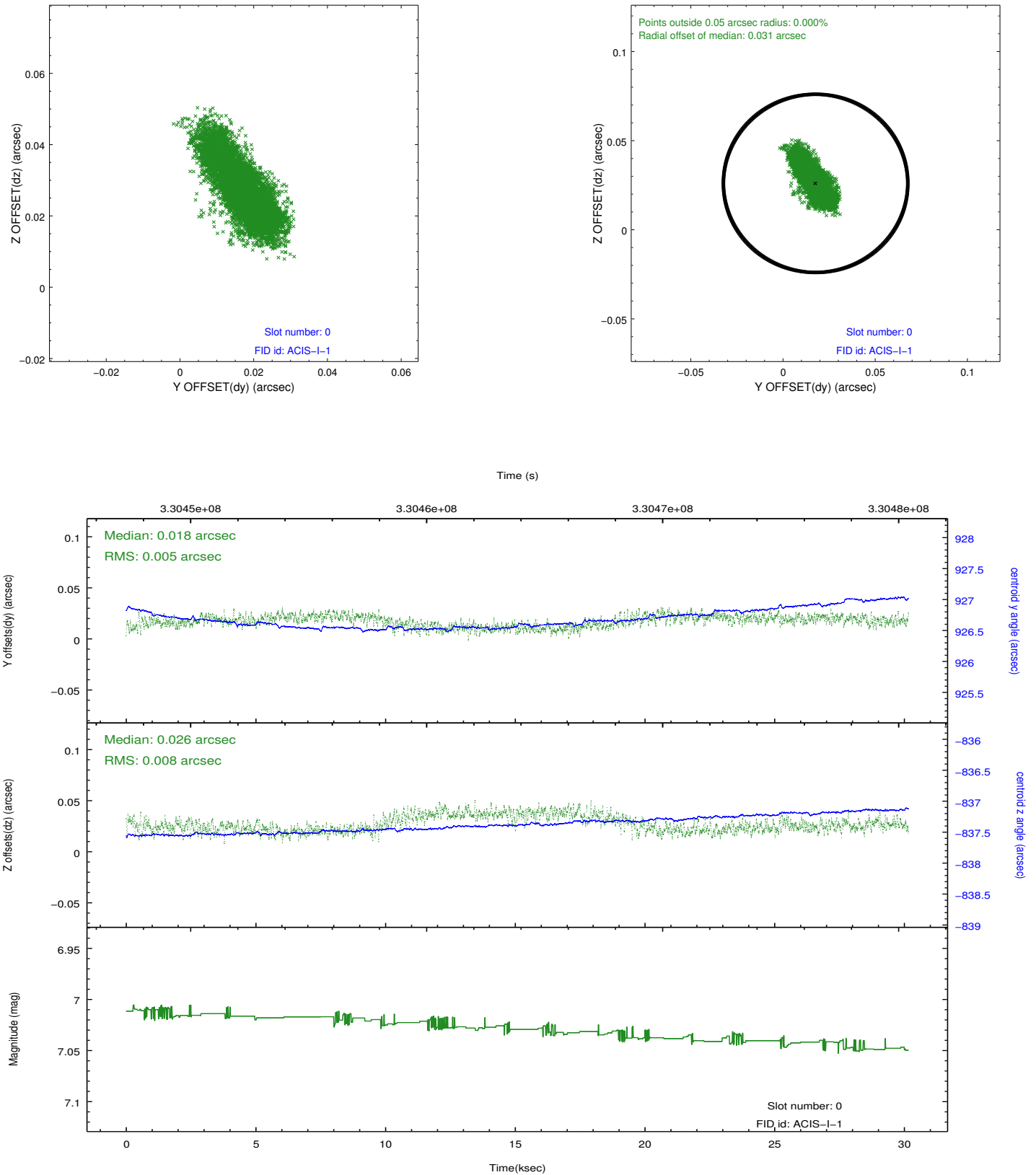


2.4.5 Slot 7

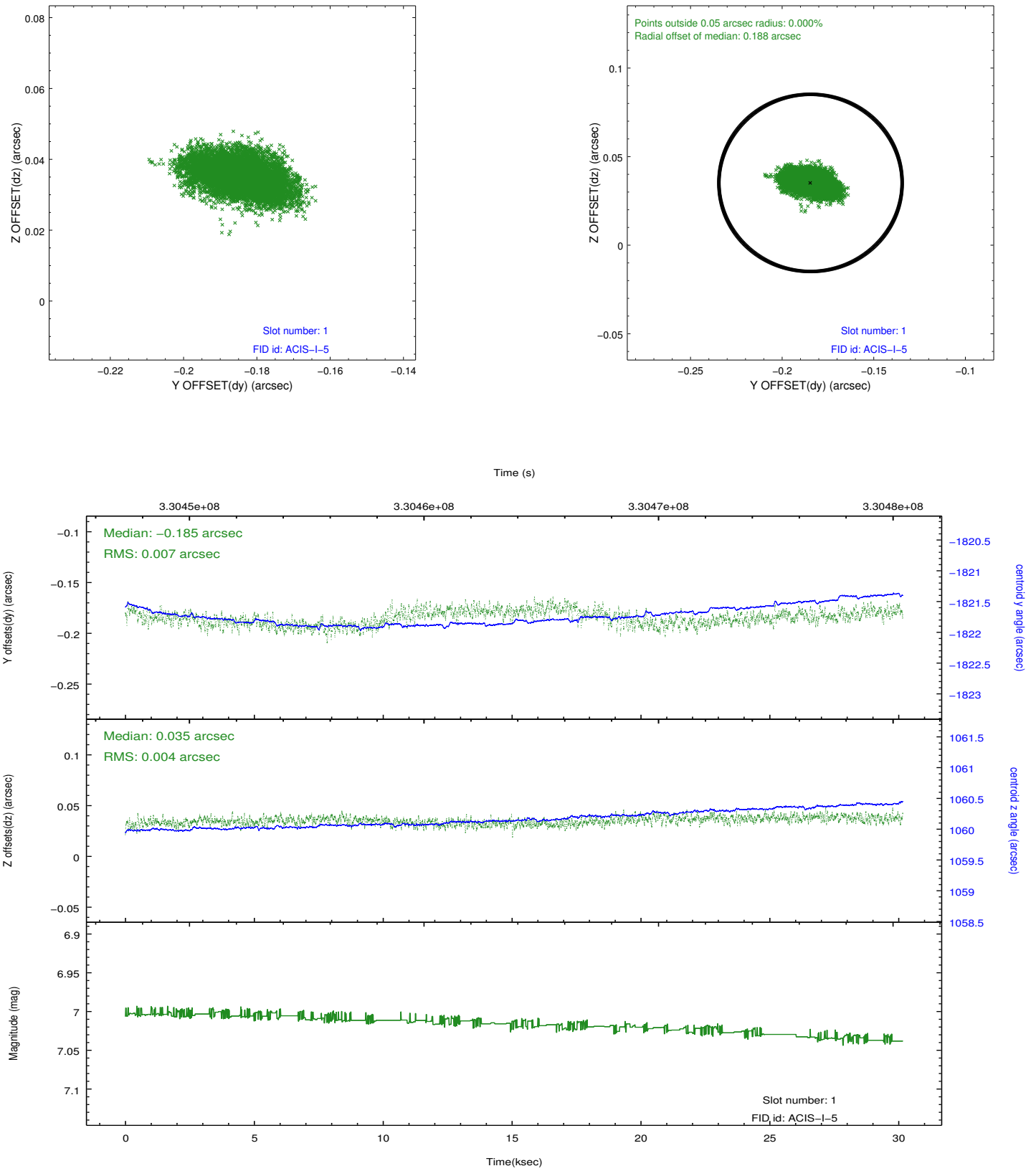


2.5 FID Slots

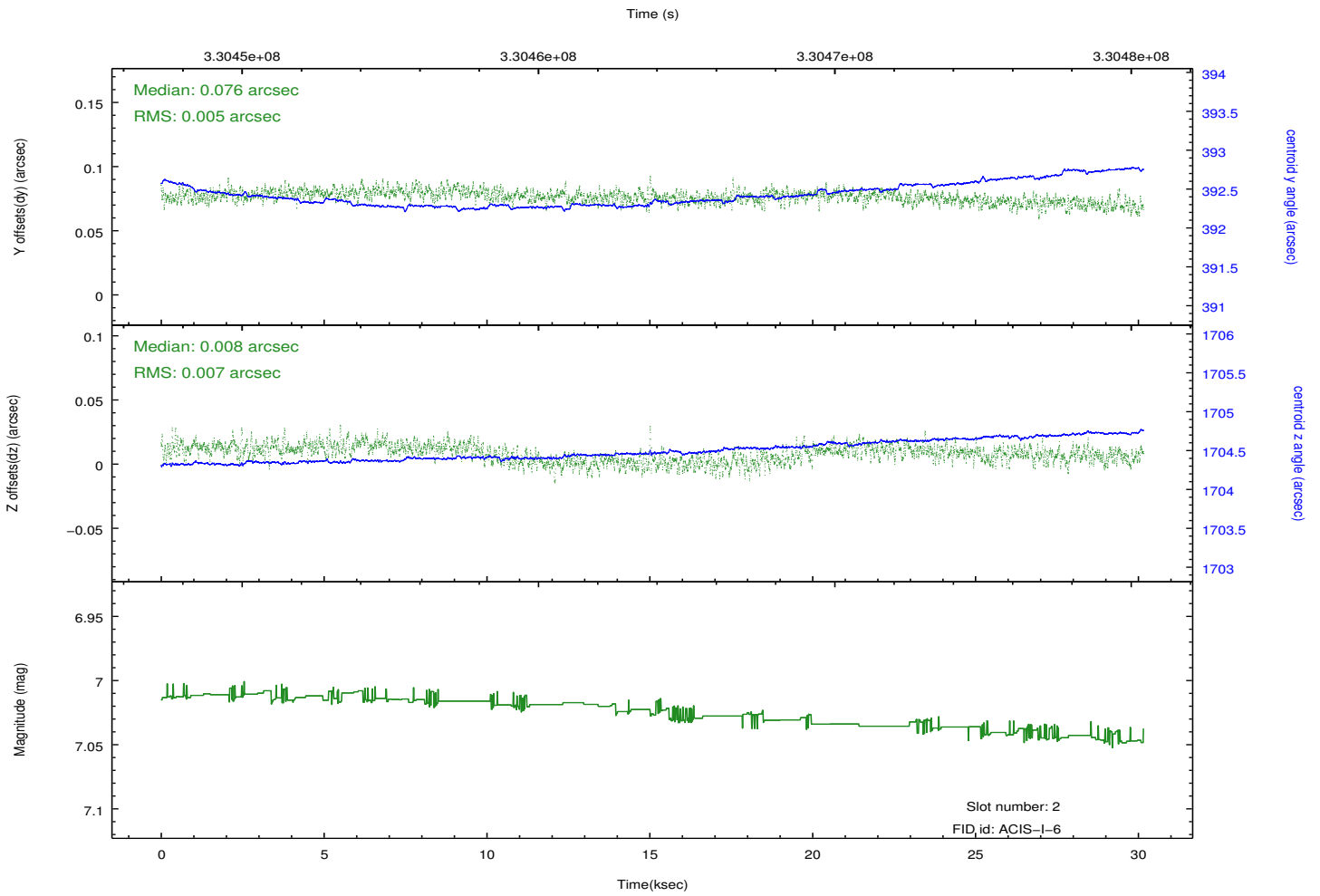
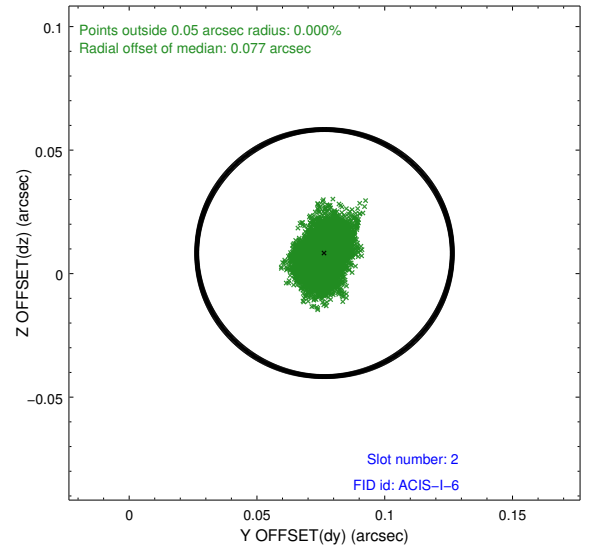
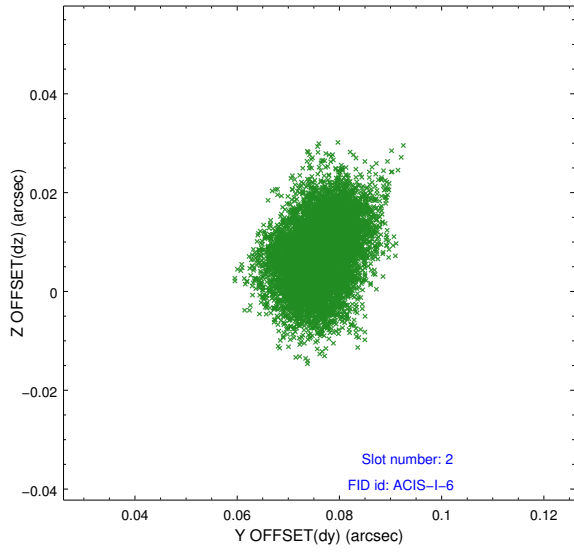
2.5.1 Slot 0



2.5.2 Slot 1



2.5.3 Slot 2



A Summary

A.1 Status

V&V Scientist	Jen Lauer
V&V Date (YYYY-MM-DD)	2012.05.22
V&V Edition	1
V&V Disposition and Status	OK
V&V Charge Time	30.1567588

A.2 Comments