

V&V Reference Report

L2 ASCDS Version : 8.4.5

Observation 926 - L2 Version 4
Chandra X-Ray Center

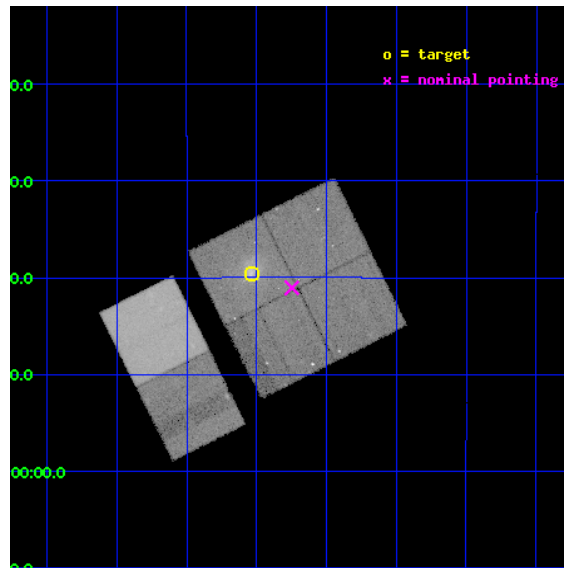
L2 Processing Date : Aug 29 2012

Contents

1	Front	2
2	OBI	3
2.1	OBI	3
2.1.1	Images	3
2.1.2	Bias	3
2.1.3	Parameters	4
2.1.4	Events	4
2.2	Compared Parameters	5
2.3	Aspect	6
2.4	Star Slots	9
2.4.1	Slot 3	9
2.4.2	Slot 4	10
2.4.3	Slot 5	11
2.4.4	Slot 6	12
2.4.5	Slot 7	13
2.5	FID Slots	14
2.5.1	Slot 0	14
2.5.2	Slot 1	15
2.5.3	Slot 2	16
A	Summary	17
A.1	Status	17
A.2	Comments	17

1 Front

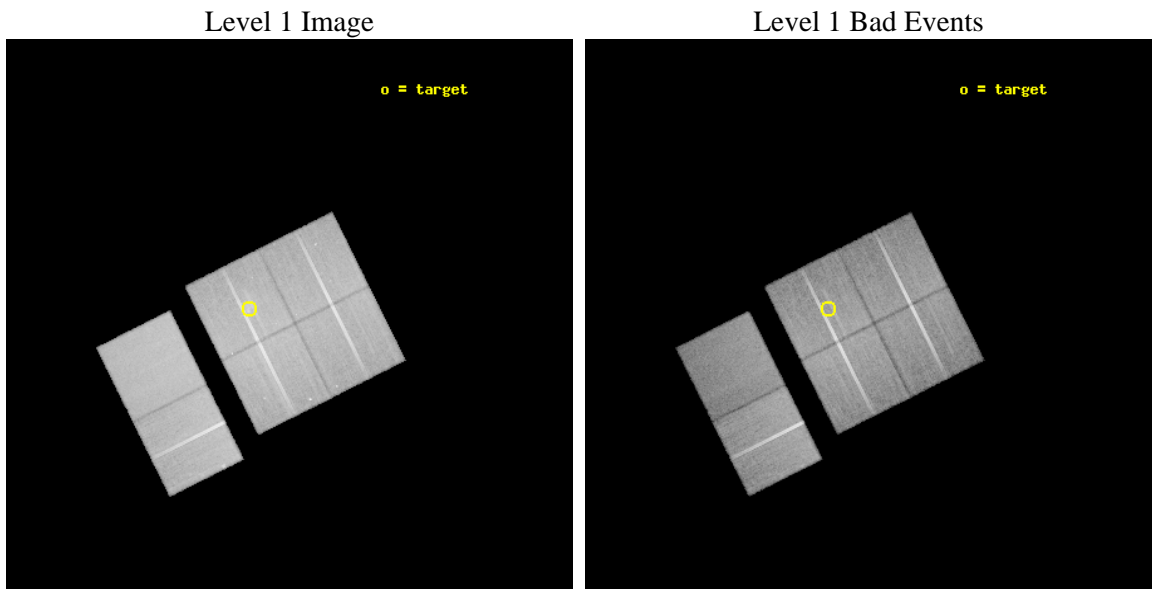
seq_num	800102	Sequence number
obs_id	926	Observation id
title	CLUSTER MASSES AT MODERATE REDSHIFTS	Proposal title
observer	Dr. Erica Ellingson	Principal investigator
object	MS 1008.1-1224	Source name
dtycycle	0	
cycle	P	events from which exps? Prim/Second/Both
ra_targ	152.63471	Observer's specified target RA [deg]
dec_targ	-12.65894	Observer's specified target Dec [deg]
ra_nom	152.5619997563	Nominal RA [deg]
dec_nom	-12.684264317809	Nominal Dec [deg]
roll_nom	243.41486864356	Nominal Roll [deg]
revision	4	Processing version of data
ontime	44799.628318265	Sum of GTIs [s]
livetime	44232.348449402	Livetime [s]
ontime0	44789.782297626	Sum of GTIs [s]
ontime1	44799.546218351	Sum of GTIs [s]
ontime2	44802.828238517	Sum of GTIs [s]
ontime3	44799.628318265	Sum of GTIs [s]
ontime6	44799.710398272	Sum of GTIs [s]
ontime7	44802.910318509	Sum of GTIs [s]
l2events	352630	Number of level 2 events



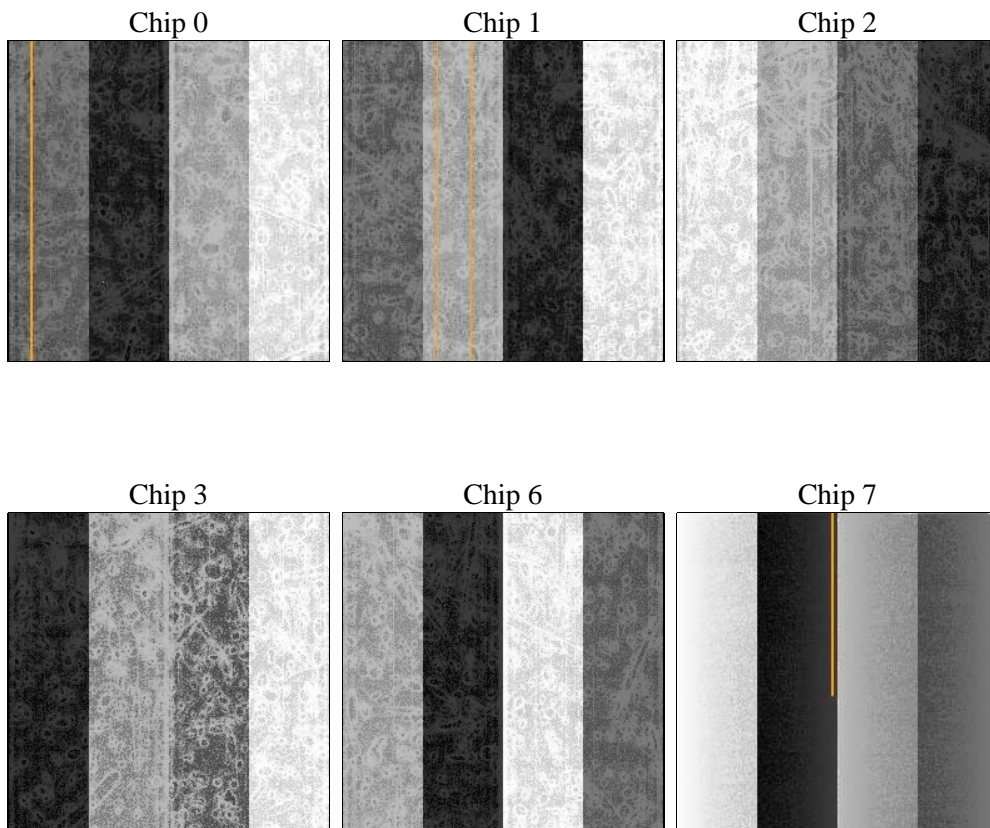
2 OBI

2.1 OBI

2.1.1 Images



2.1.2 Bias



2.1.3 Parameters

obi_num	1	Obi number	sched_exp_time	45000.000000	[s] Scheduled observation exposure time
ascdsver	8.4.5	Processing system revision	ontime	44799.628318265	Sum of GTIs [s]
caldbver	4.5.1.1	 	ontime0	44789.782297626	Sum of GTIs [s]
date	2012-08-29T06:29:31	Date and time of file creation	ontime1	44799.546218351	Sum of GTIs [s]
revision	4	Processing version of data	ontime2	44802.828238517	Sum of GTIs [s]
			ontime3	44799.628318265	Sum of GTIs [s]
			ontime6	44799.710398272	Sum of GTIs [s]
			ontime7	44802.910318509	Sum of GTIs [s]
			l1events	1868335	Number of level 1 events

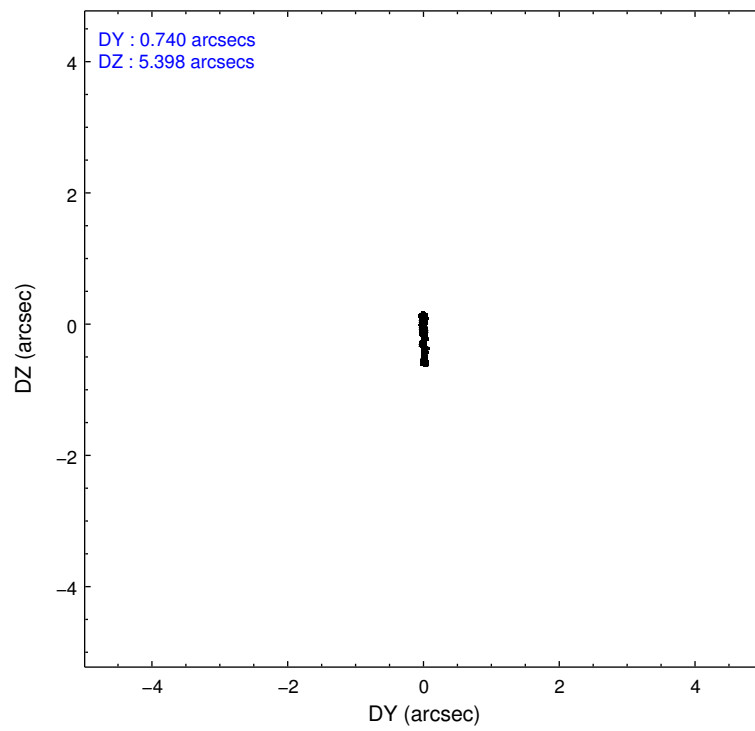
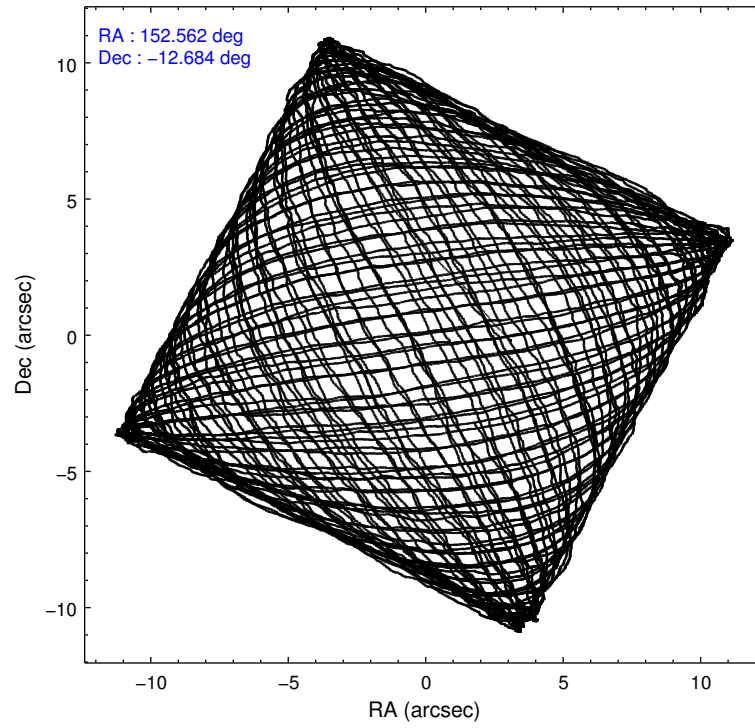
2.1.4 Events

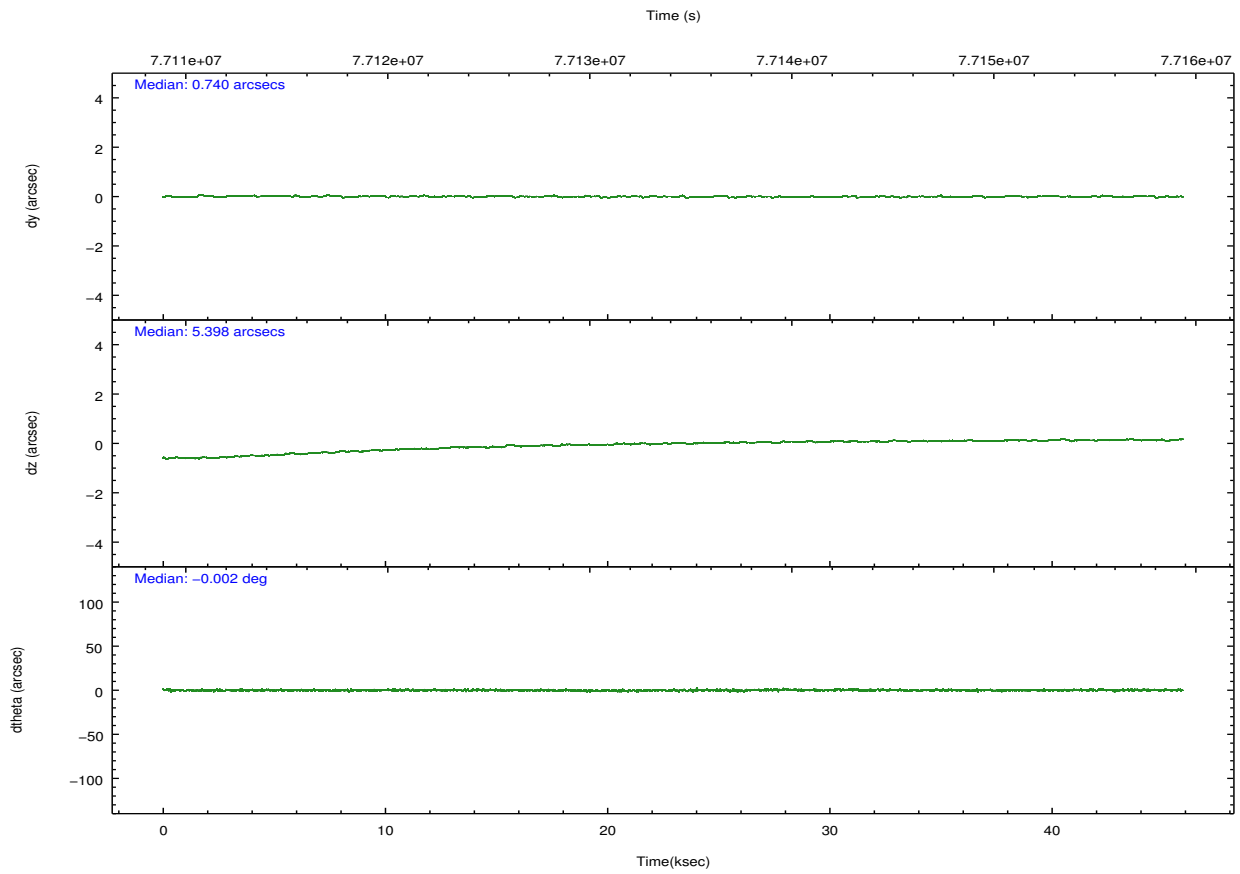
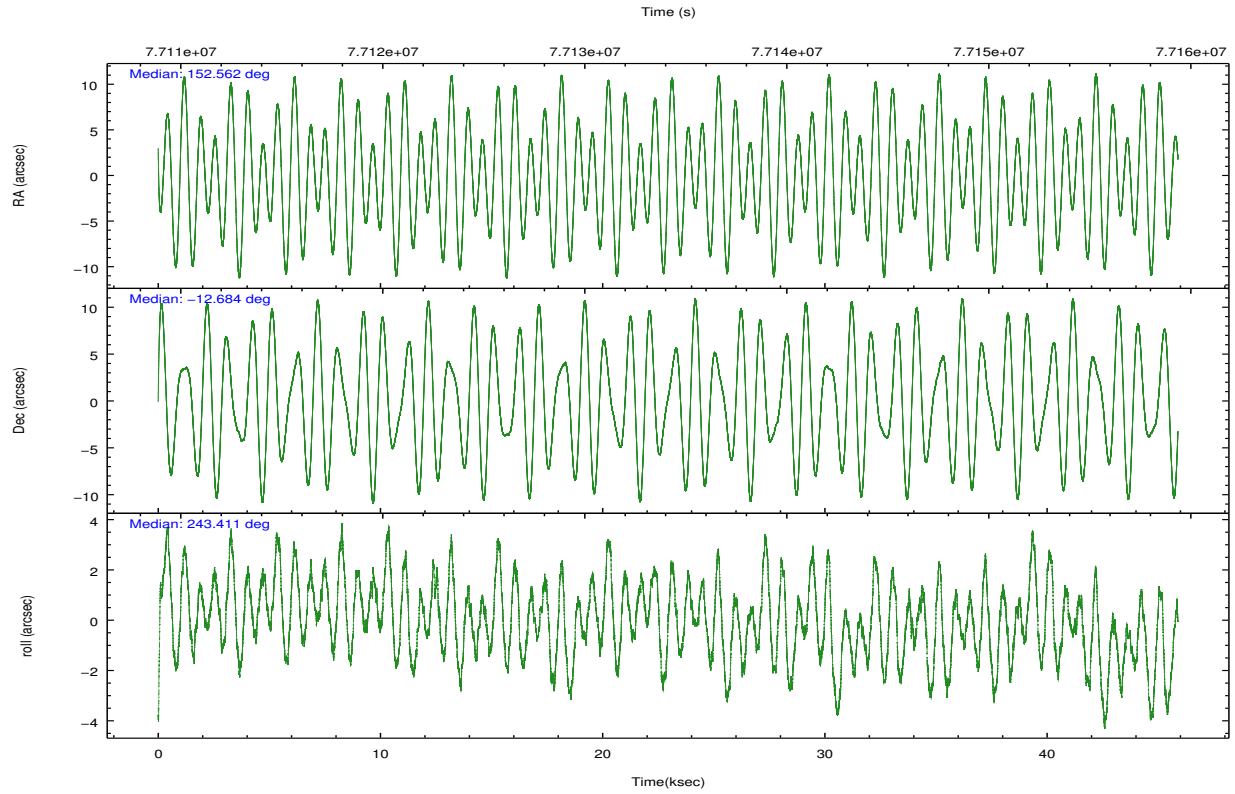
	ccd 0	ccd 1	ccd 2	ccd 3	ccd 6	ccd 7		ccd 0	ccd 1	ccd 2	ccd 3	ccd 6	ccd 7
level 1 events	276899	283433	316659	322673	325259	343412	grade 0 events	20151	18568	20751	27585	19130	17238
rejected events	230105	236947	270597	266865	279939	185985		7%	6%	6%	8%	5%	5%
rejected %	83%	83%	85%	82%	86%	54%	grade 1 events	155	116	166	163	193	381
								0%	0%	0%	0%	0%	0%
							grade 2 events	11291	11393	10475	11756	11091	32338
								4%	4%	3%	3%	3%	9%
							grade 3 events	3339	3588	2889	3434	3216	14531
								1%	1%	0%	1%	0%	4%
							grade 4 events	3266	3489	3651	3597	3237	14351
								1%	1%	1%	1%	0%	4%
							grade 5 events	8533	9082	8424	9320	10232	31168
								3%	3%	2%	2%	3%	9%
							grade 6 events	8748	9448	8297	9439	8648	78978
								3%	3%	2%	2%	2%	22%
							grade 7 events	221416	227749	262006	257379	269512	154427
								79%	80%	82%	79%	82%	44%

2.2 Compared Parameters

Parameter	Planned	Actual	Parameter	Planned	Actual
Instrument	ACIS	ACIS	Obspar format version number	7	7
Detector	ACIS-012367	ACIS-012367	Obspar file type	PREDICTED	ACTUAL
Grating	NONE	NONE	Obspar update status	NONE	UPDATED
Data mode	VFAINT	VFAINT	Number of optional ACIS chips dropped	0	0
Observation mode	POINTING	POINTING	On-chip summing requested	N	N
[deg] Pointing RA	152.560468	152.5619997563005	Subarray requested	NONE	NONE
[deg] Pointing Dec	-12.656727	-12.68426431780868	Alternating exposures requested	N	N
[deg] Pointing Roll	243.205854	243.4148686435646	[s] Primary exposure time	0.000000	3.2
[mm] SIM focus pos	-0.782348	-0.7809083437167272			
[mm] SIM defocus	0	0.001439871863259334			
[mm] SIM translation stage pos	-233.592463	-233.5874344608287			
[mm] SIM translation stage offset	0	-0.005018542100998502			
[s] Observation start time (MET)	77112022.184000	77110730.06510501			
Observation start date	2000-06-11T11:59:18	2000-06-11T11:38:50			
[s] Observation end time (MET)	77157022.184000	77157928.241843			
Observation end date	2000-06-12T00:29:18	2000-06-12T00:45:28			
Read mode	TIMED	TIMED			

2.3 Aspect



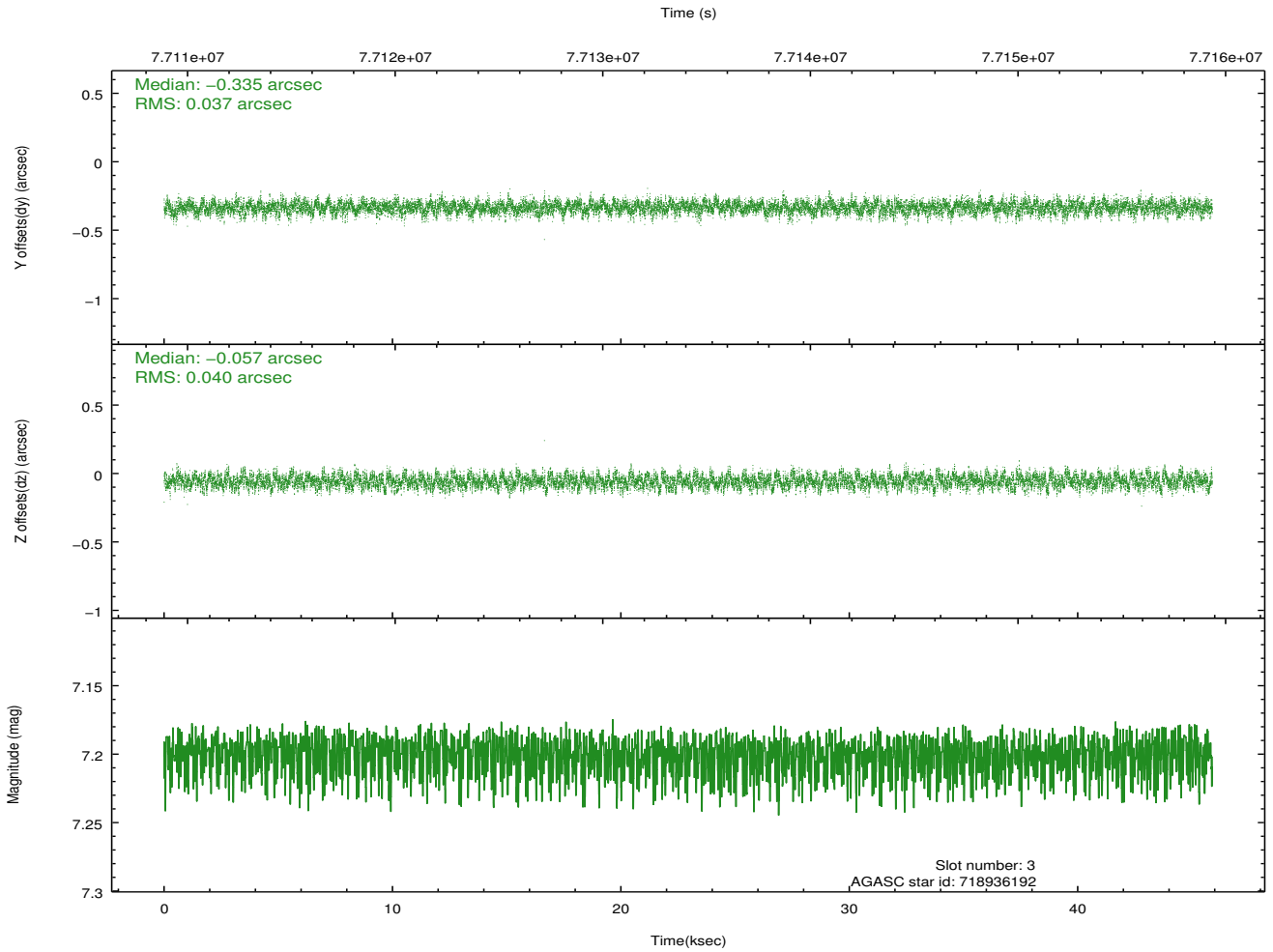
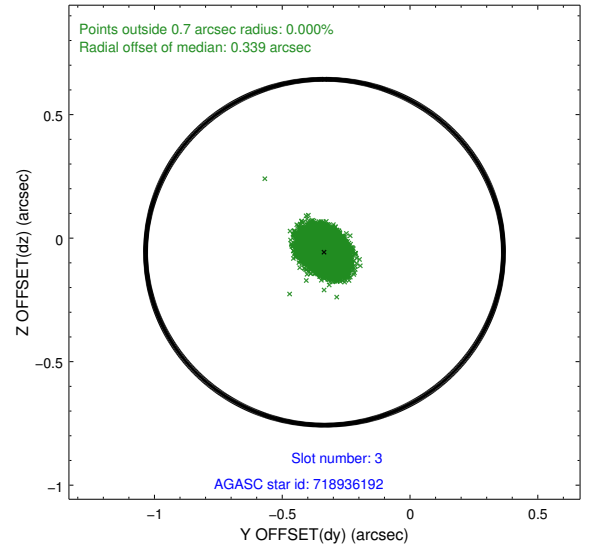
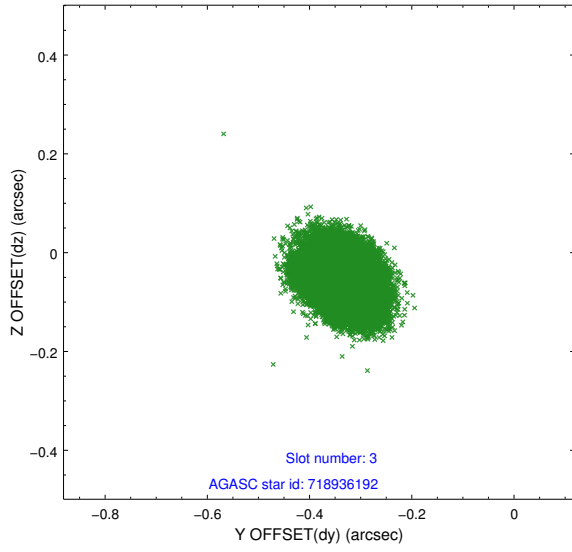


Slot Statistics

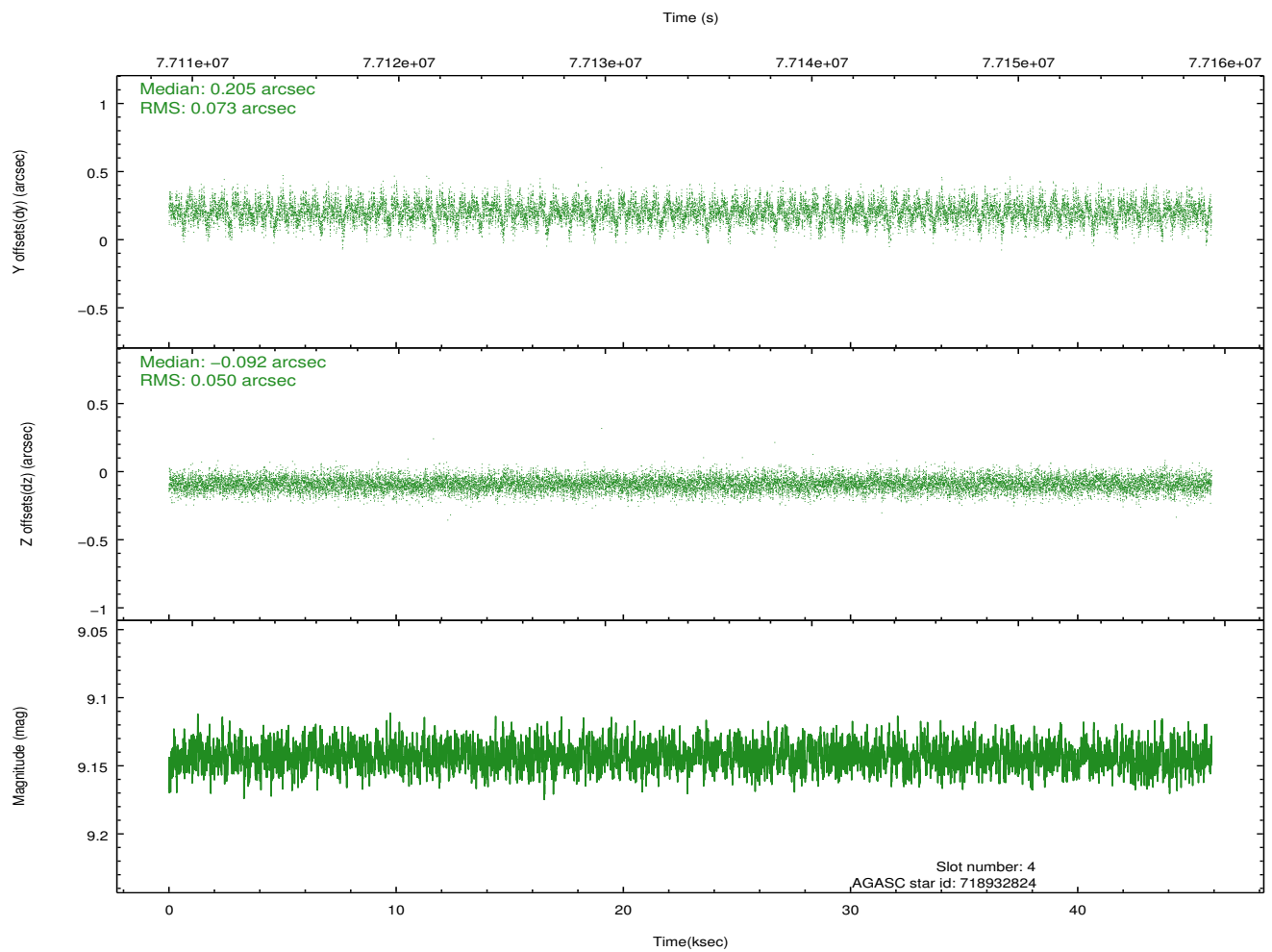
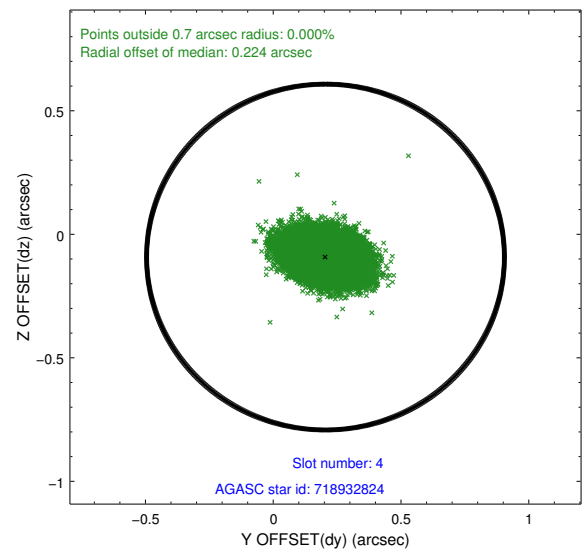
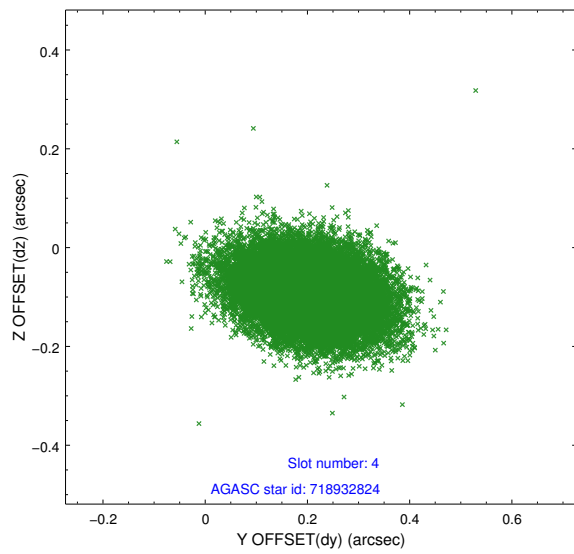
slot	status	id	mag	n_pts	med_dy	med_dz	dr1	dr2	ra	dec	mean_y	mean_z
0	FID	ACIS-I-2	7.15	11192	-0.027	-0.035	0.010	0.018	0.000000	0.000000	-755.09	-835.06
1	FID	ACIS-I-4	7.19	11190	-0.049	0.034	0.007	0.013	0.000000	0.000000	2158.96	1071.18
2	FID	ACIS-I-5	7.23	11190	-0.025	0.070	0.010	0.018	0.000000	0.000000	-1808.91	1069.07
3	GUIDE	718936192	7.20	22382	-0.335	-0.057	0.059	0.094	152.408460	-11.895216	-2205.12	-1713.80
4	GUIDE	718932824	9.14	22374	0.205	-0.092	0.093	0.156	151.733159	-12.879911	2031.17	-2227.42
5	GUIDE	718935480	9.11	22368	0.107	-0.052	0.069	0.116	152.203897	-12.616328	436.62	-1183.29
6	GUIDE	718933424	9.39	22375	0.125	0.070	0.091	0.146	152.090123	-13.050108	2009.96	-833.04
7	GUIDE	718930664	9.51	22375	-0.098	0.131	0.090	0.148	152.947671	-12.302372	-1751.10	641.26

2.4 Star Slots

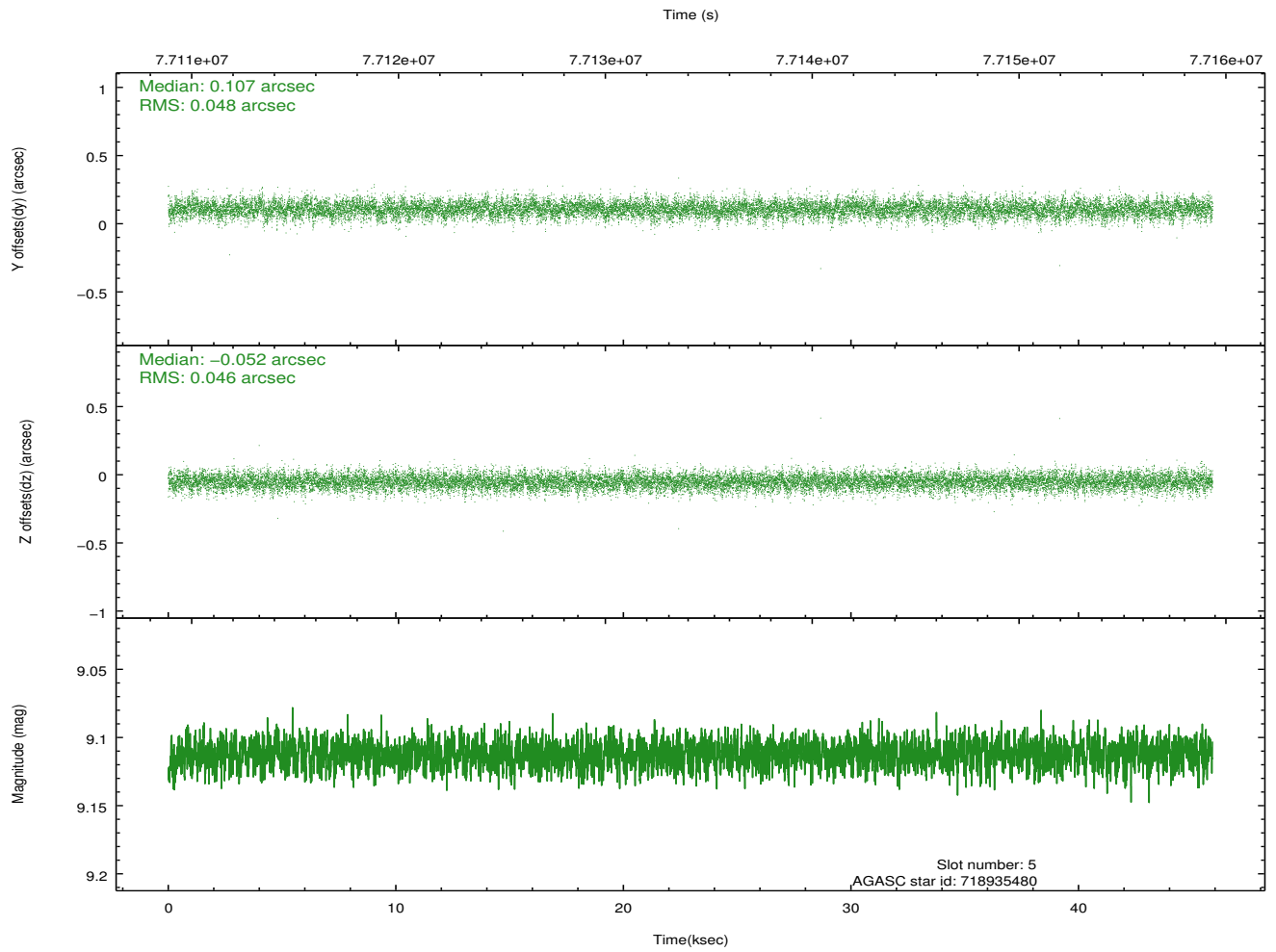
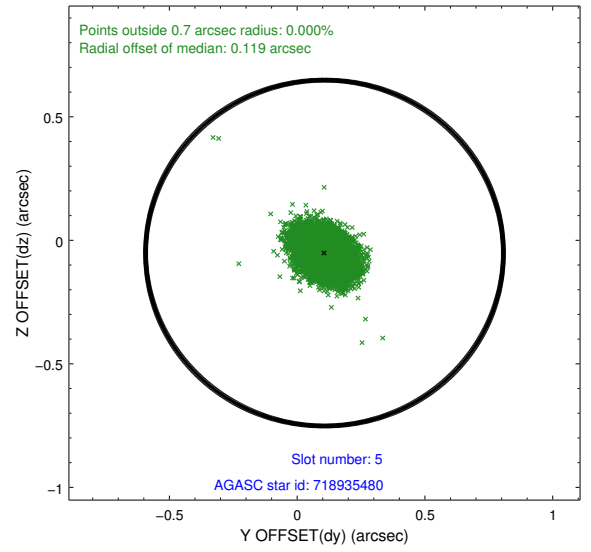
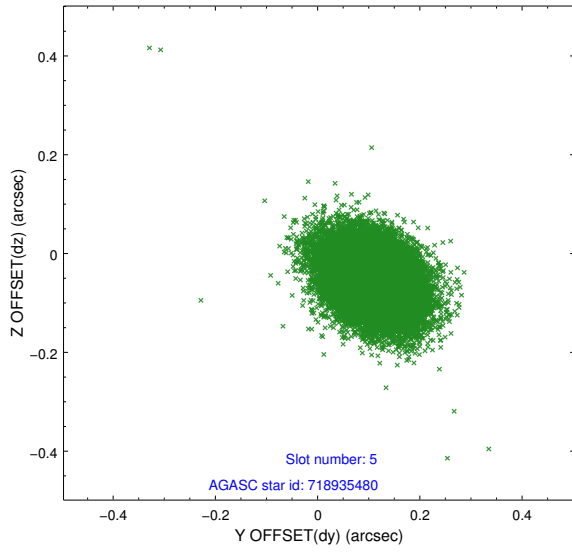
2.4.1 Slot 3



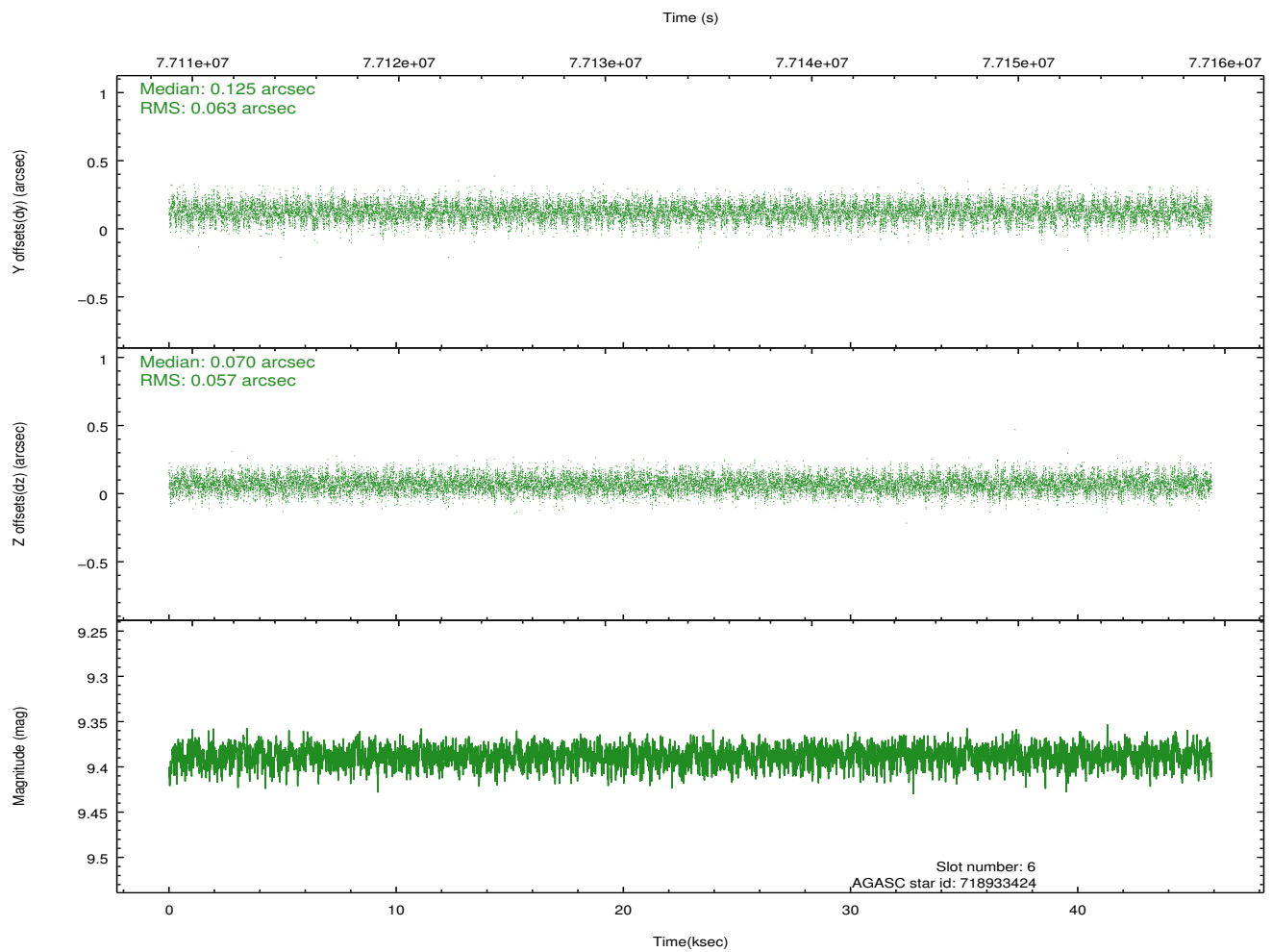
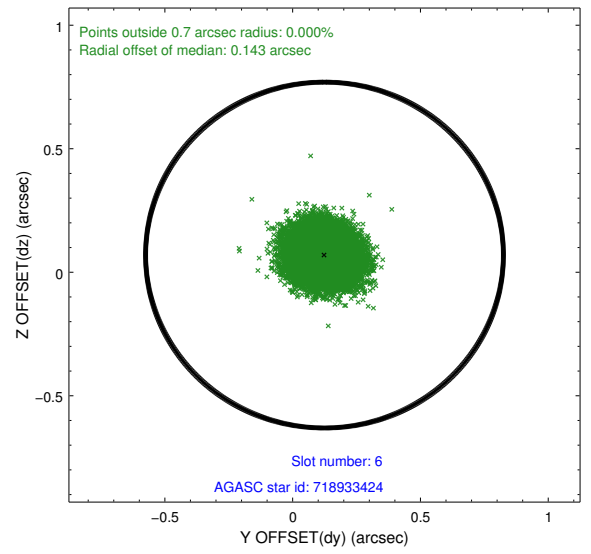
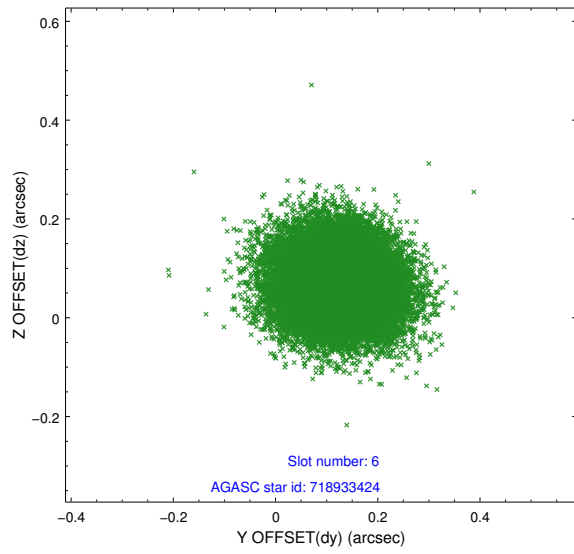
2.4.2 Slot 4



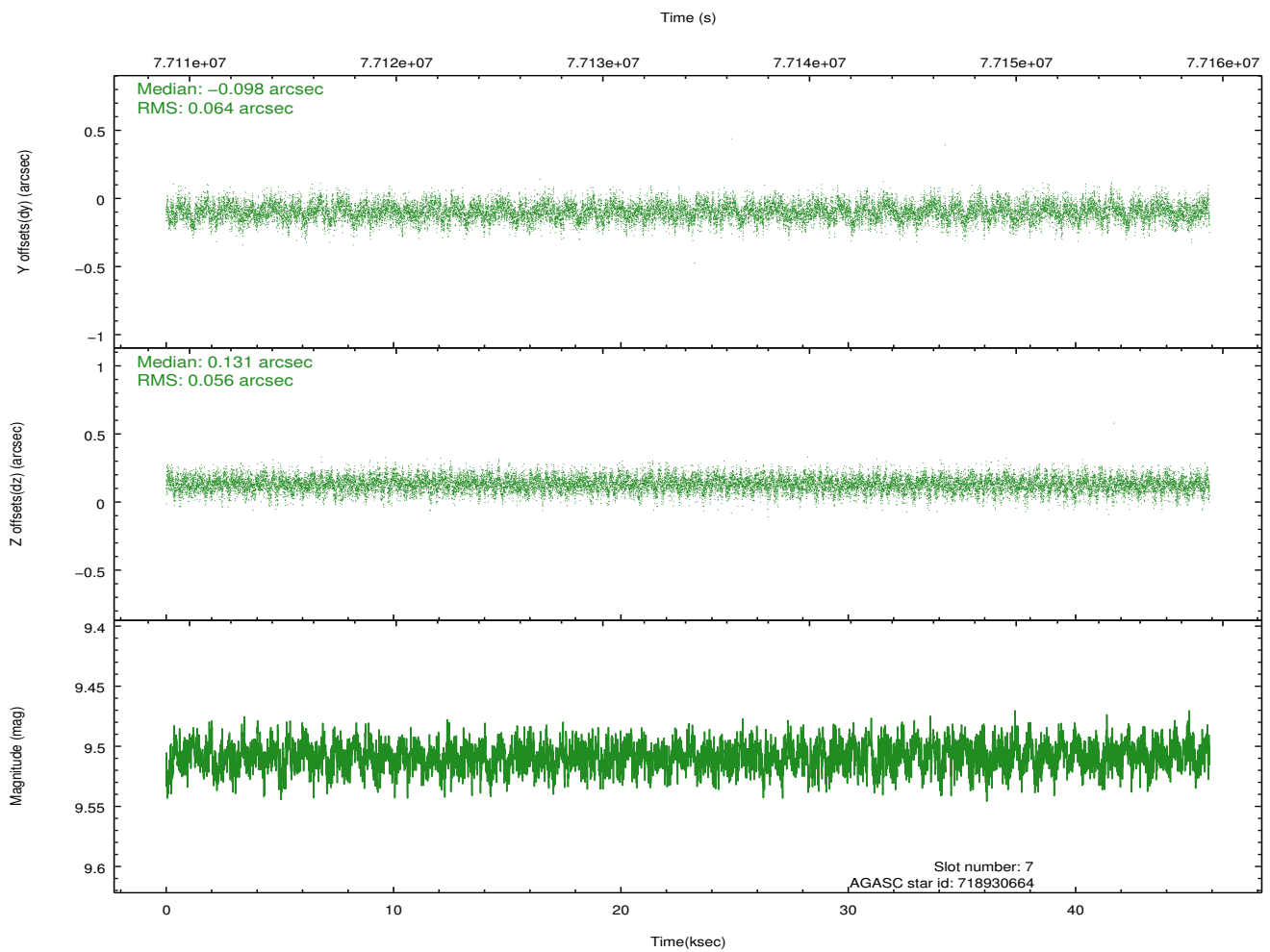
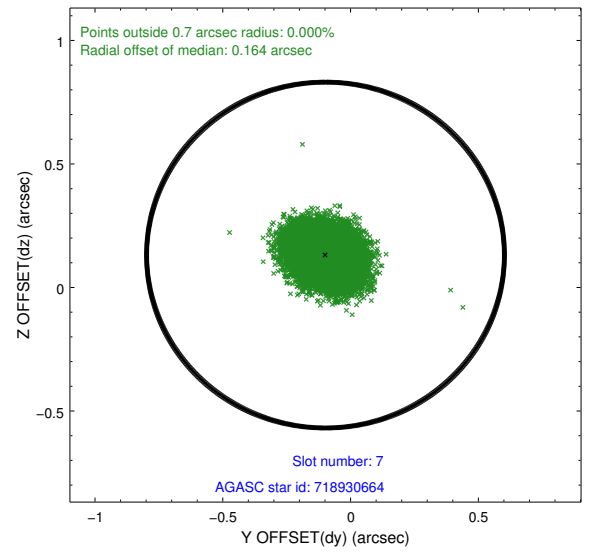
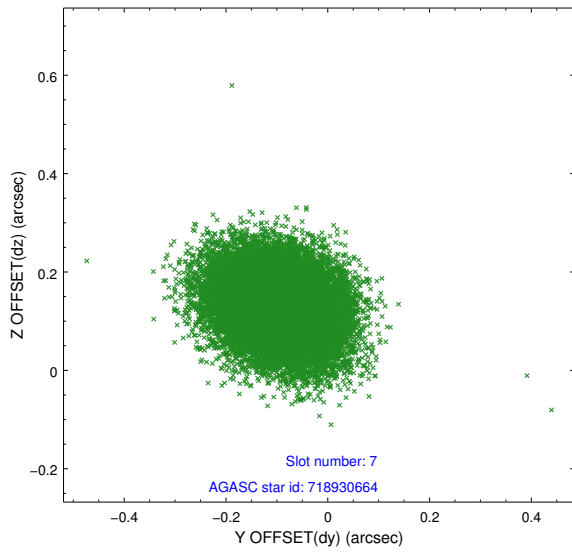
2.4.3 Slot 5



2.4.4 Slot 6

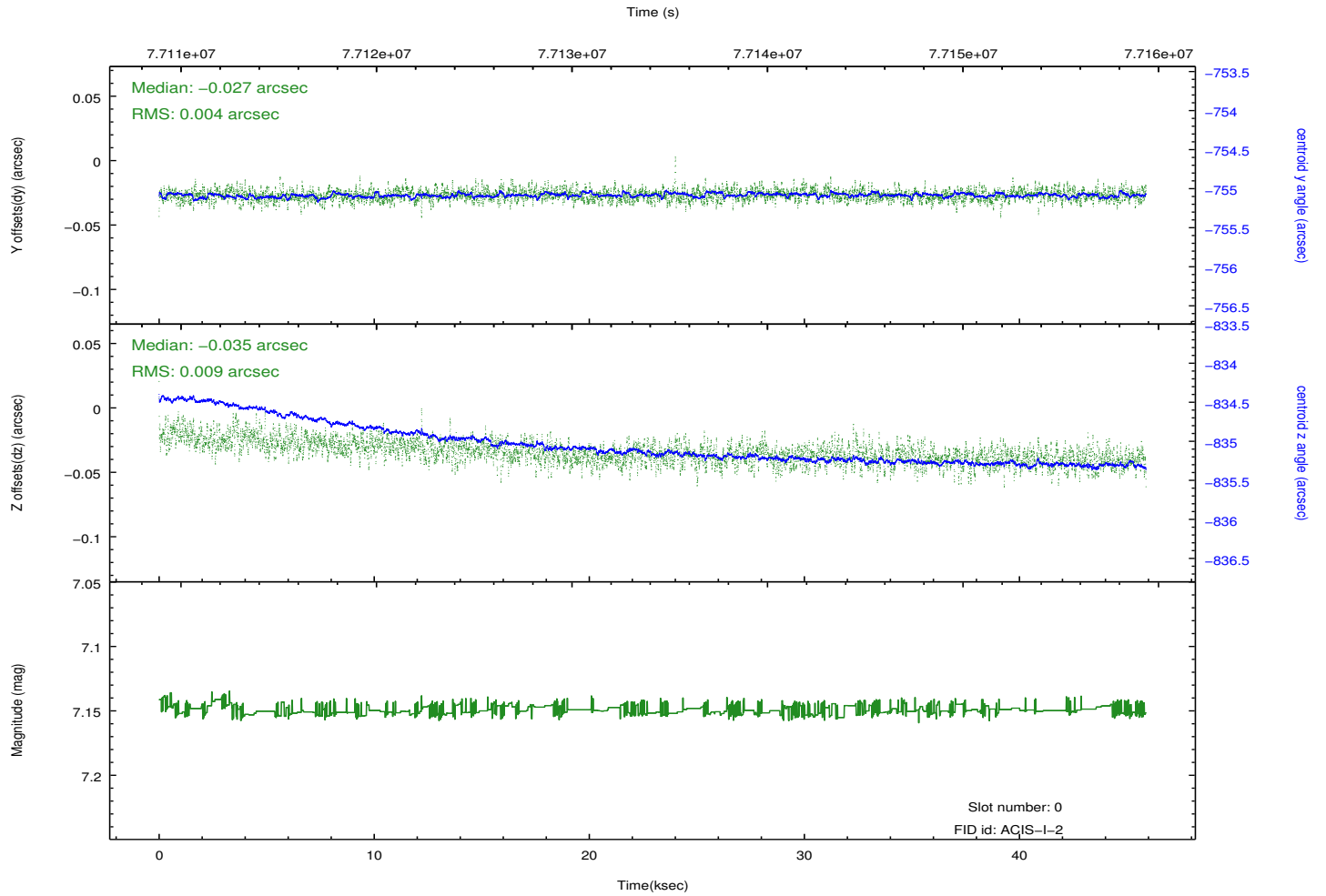
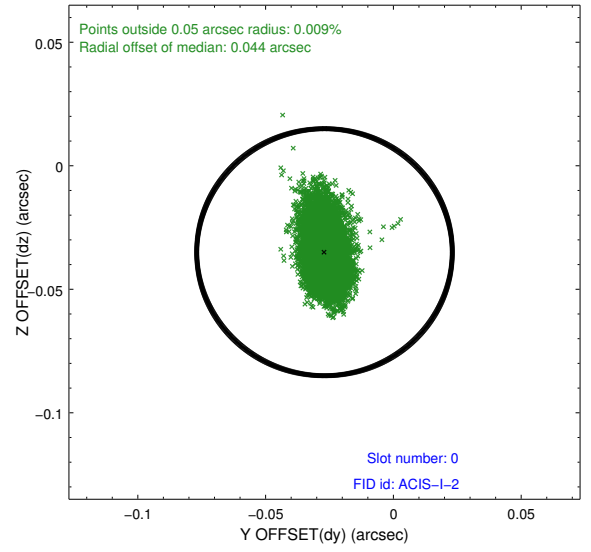
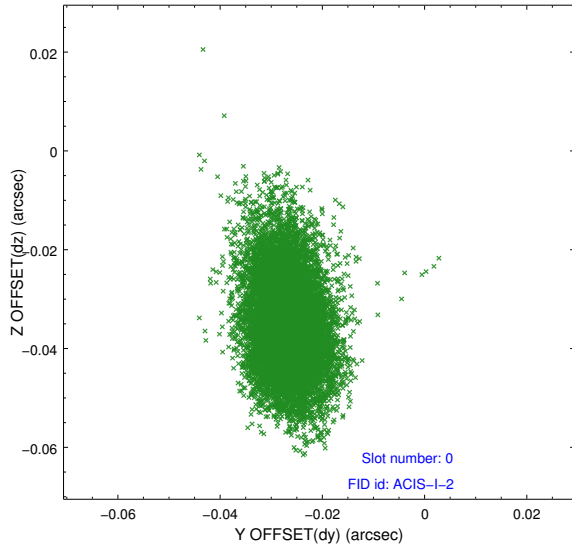


2.4.5 Slot 7

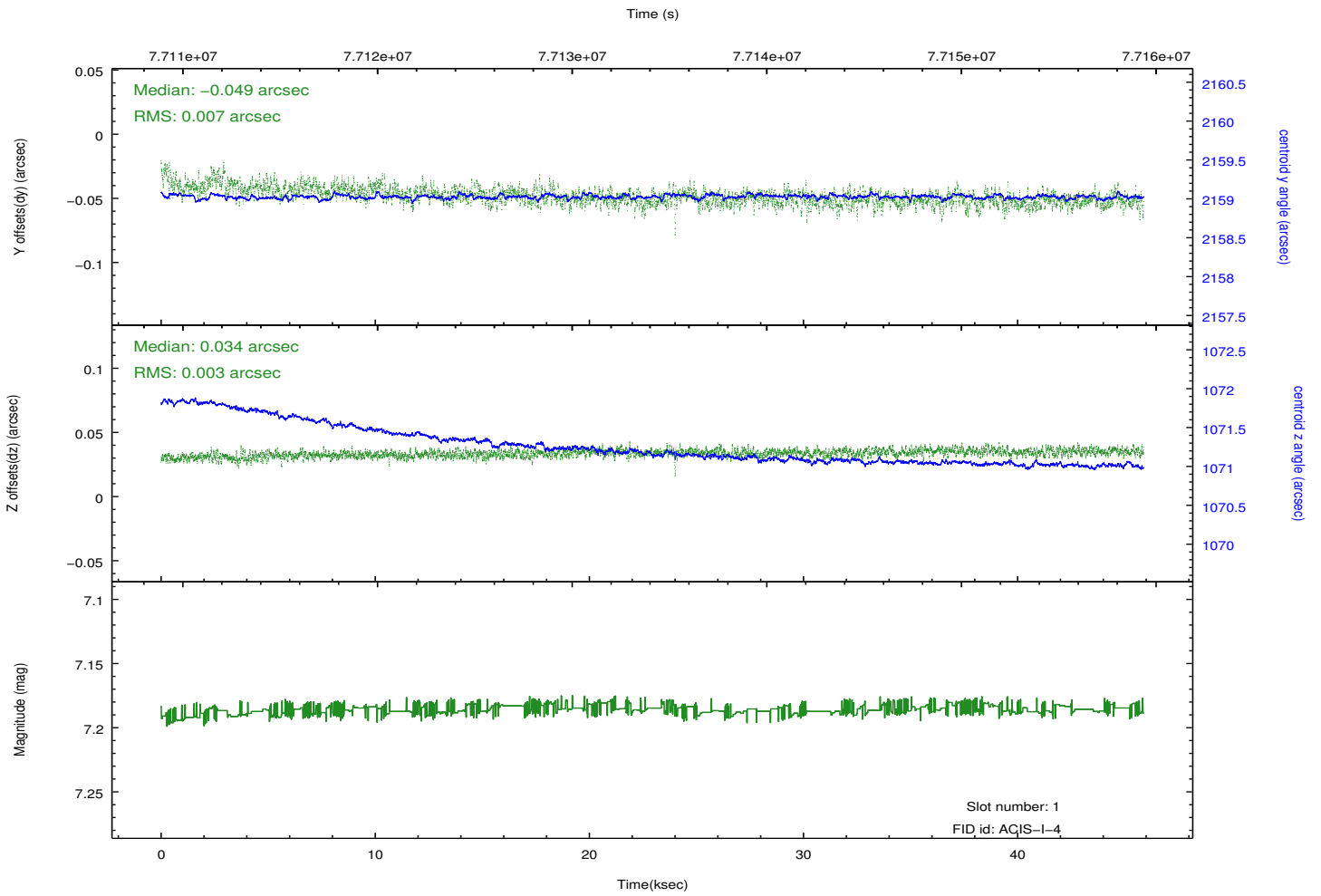
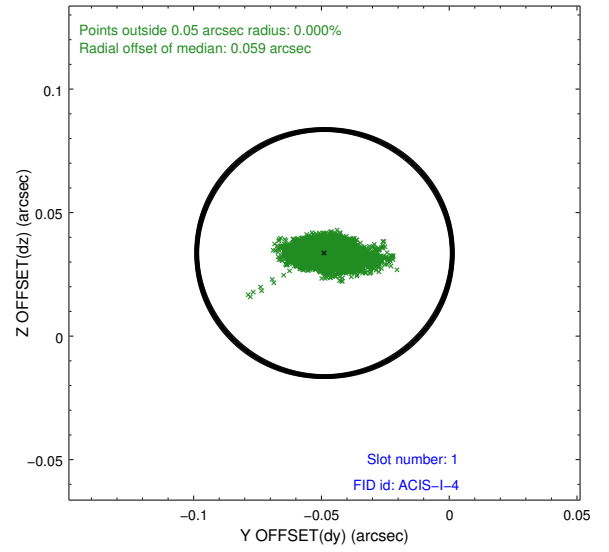
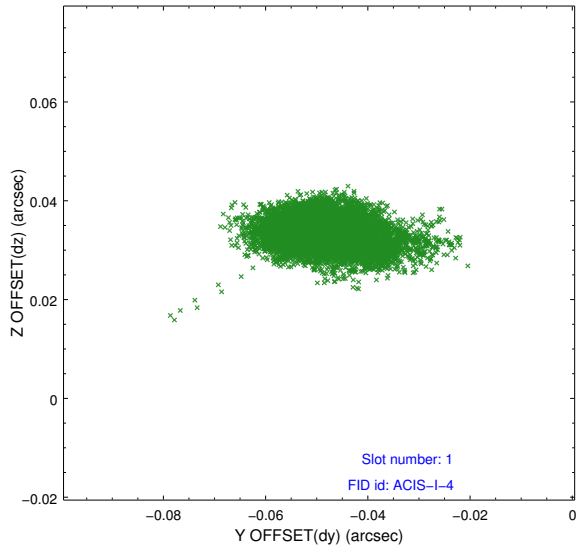


2.5 FID Slots

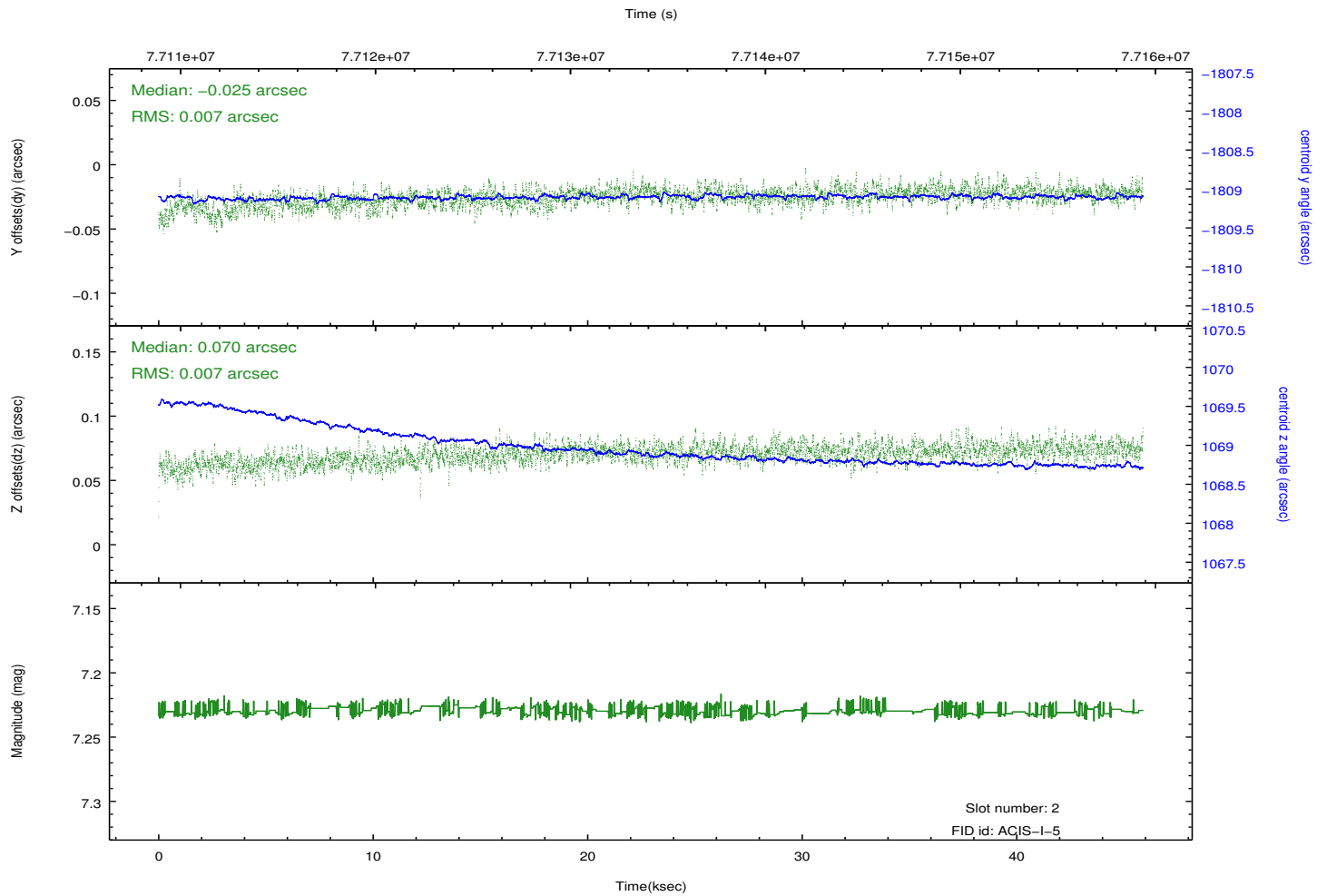
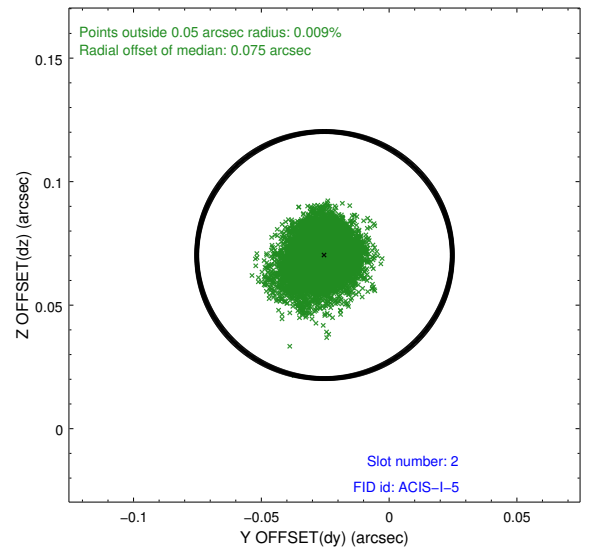
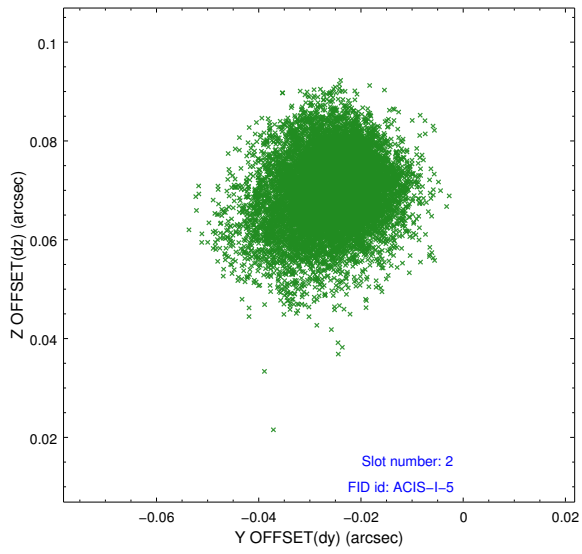
2.5.1 Slot 0



2.5.2 Slot 1



2.5.3 Slot 2



A Summary

A.1 Status

V&V Scientist	Beth Sundheim
V&V Date (YYYY-MM-DD)	2012.08.31
V&V Edition	1
V&V Disposition and Status	OK
V&V Charge Time	44.736

A.2 Comments

Charge time for this observation remains at previous value of 44.736 ksec.