

V&V Reference Report

L2 ASCDS Version : 8.4.4

Observation 9266 - L2 Version 2
Chandra X-Ray Center

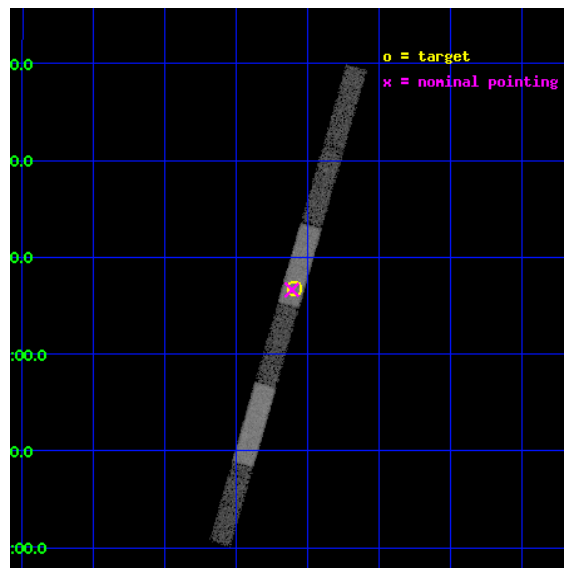
L2 Processing Date : May 9 2012

Contents

1	Front	2
2	OBI	3
2.1	OBI	3
2.1.1	Images	3
2.1.2	Bias	3
2.1.3	Parameters	4
2.1.4	Events	4
2.2	Compared Parameters	5
2.3	Aspect	6
2.4	Star Slots	9
2.4.1	Slot 3	9
2.4.2	Slot 4	10
2.4.3	Slot 5	11
2.4.4	Slot 6	12
2.4.5	Slot 7	13
2.5	FID Slots	14
2.5.1	Slot 0	14
2.5.2	Slot 1	15
2.5.3	Slot 2	16
A	Summary	17
A.1	Status	17
A.2	Comments	17

1 Front

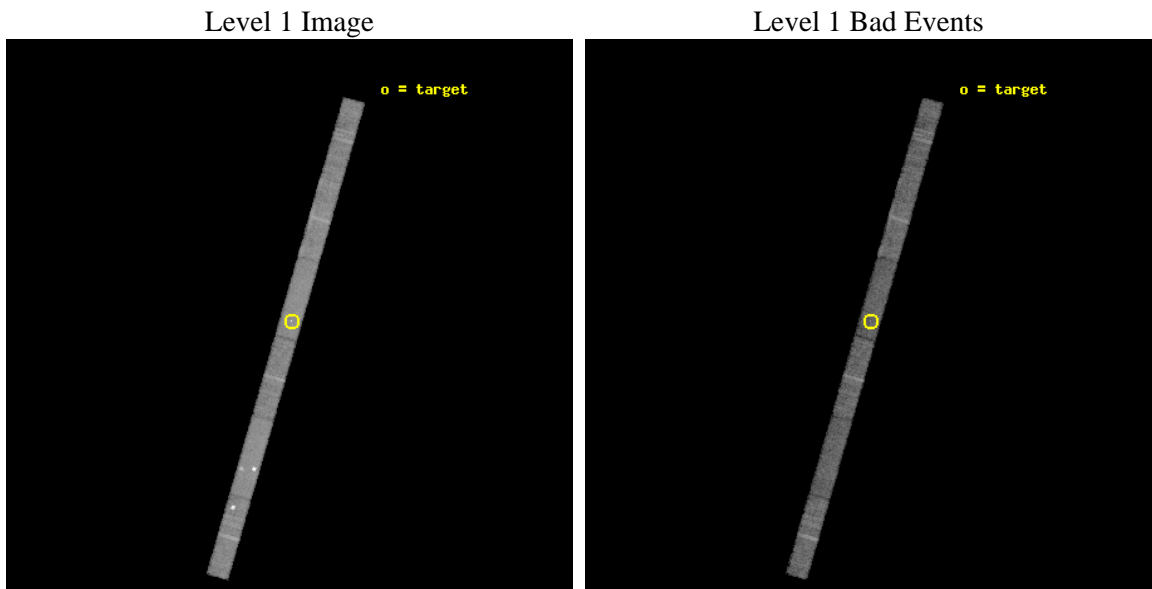
seq_num	701707	Sequence number
obs_id	9266	Observation id
title	Short-time monitoring of extreme spectral variations in Seyfert 2s	
observer	Dr Guido Risaliti	Principal investigator
object	UGC 4203	Source name
dtcycle	0	
cycle	P	events from which exps? Prim/Second/Both
ra_targ	121.024167	Observer's specified target RA [deg]
dec_targ	5.113889	Observer's specified target Dec [deg]
ra_nom	121.02777796733	Nominal RA [deg]
dec_nom	5.1106344540349	Nominal Dec [deg]
roll_nom	286.156311473	Nominal Roll [deg]
revision	2	Processing version of data
ontime	9766.9002116919	Sum of GTIs [s]
livetime	9415.6122772743	Livetime [s]
ontime4	9766.9002116919	Sum of GTIs [s]
ontime5	9766.9002116919	Sum of GTIs [s]
ontime6	9766.9002116919	Sum of GTIs [s]
ontime7	9766.9002116919	Sum of GTIs [s]
ontime8	9766.8791478872	Sum of GTIs [s]
ontime9	9766.8381078839	Sum of GTIs [s]
l2events	43742	Number of level 2 events



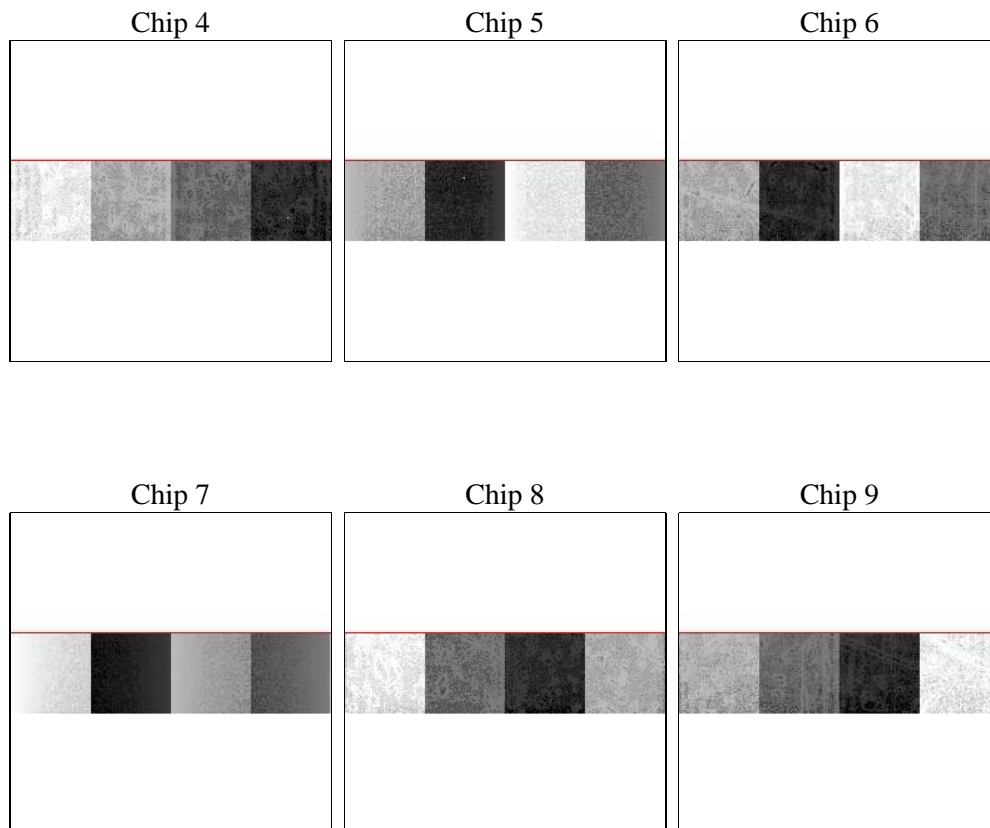
2 OBI

2.1 OBI

2.1.1 Images



2.1.2 Bias



2.1.3 Parameters

obi_num	1	Obi number	sched_exp_time	10000.000000	[s] Scheduled observation exposure time
ascdsver	8.4.4	Processing system revision	ontime	9766.9002116919	Sum of GTIs [s]
caldsver	4.4.9	 	ontime4	9766.9002116919	Sum of GTIs [s]
date	2012-05-09T18:38:50	Date and time of file creation	ontime5	9766.9002116919	Sum of GTIs [s]
revision	2	Processing version of data	ontime6	9766.9002116919	Sum of GTIs [s]
			ontime7	9766.9002116919	Sum of GTIs [s]
			ontime8	9766.8791478872	Sum of GTIs [s]
			ontime9	9766.8381078839	Sum of GTIs [s]
			l1events	211722	Number of level 1 events

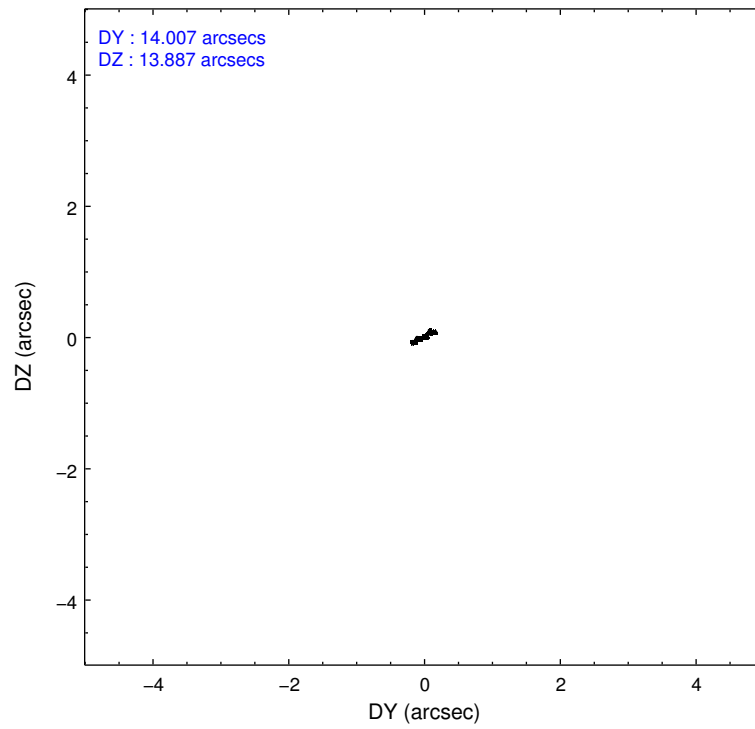
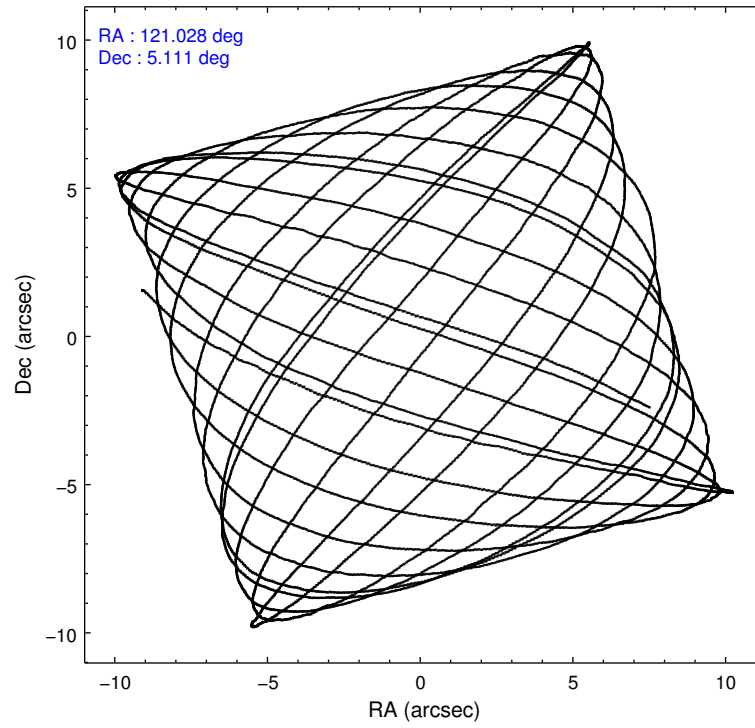
2.1.4 Events

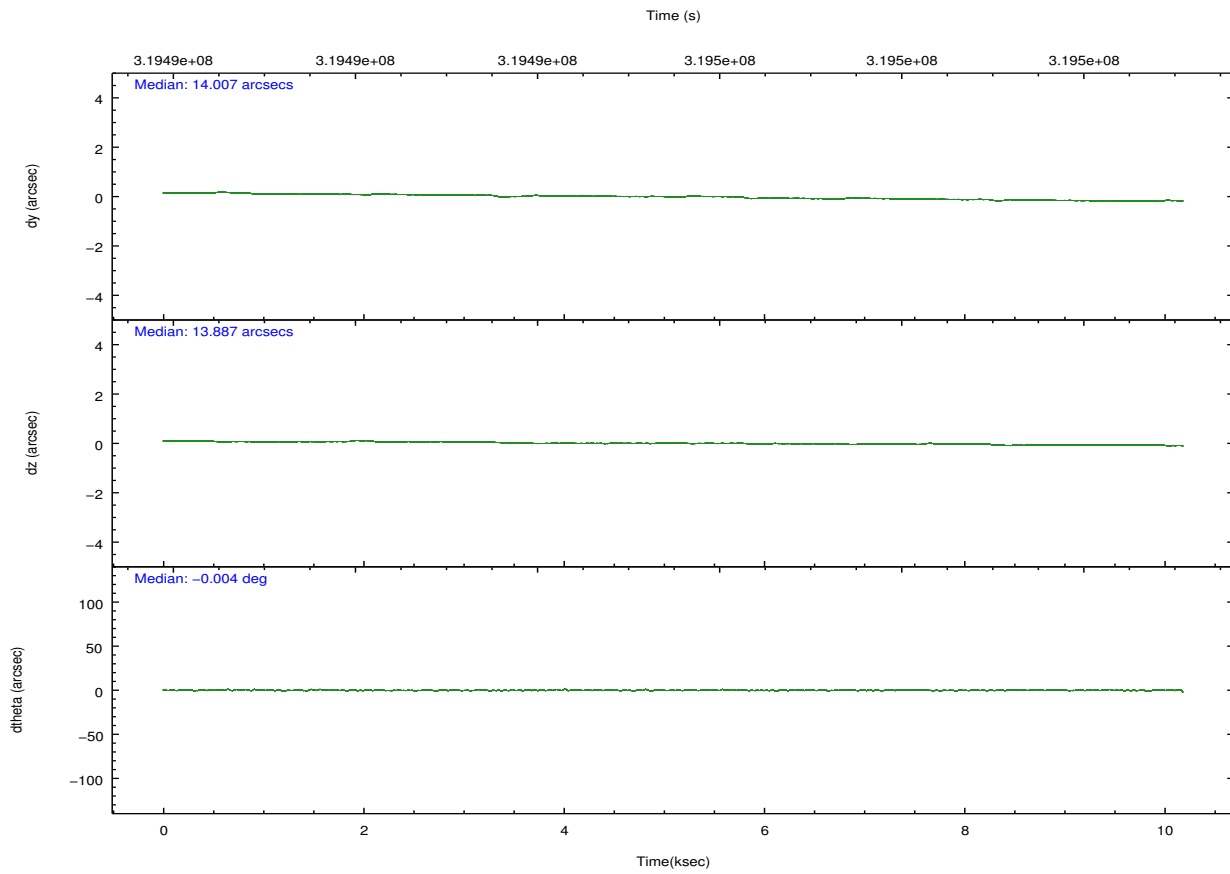
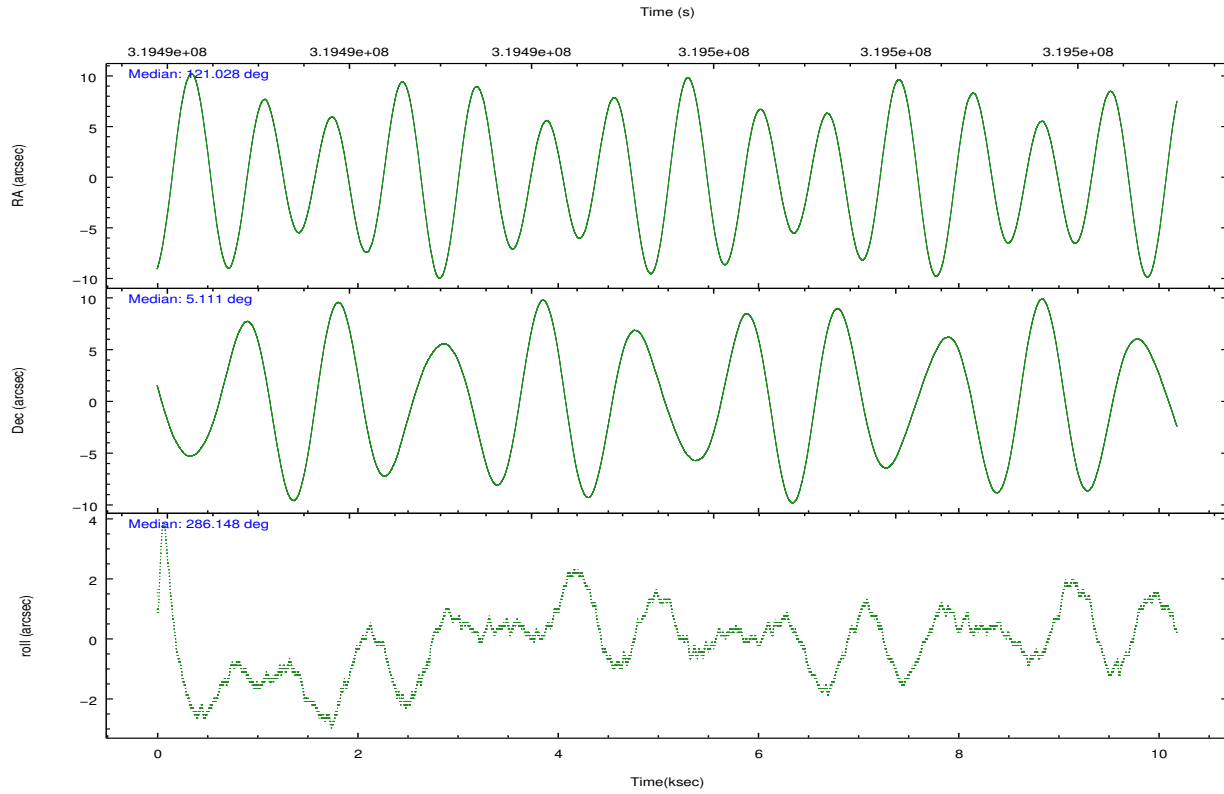
	ccd 4	ccd 5	ccd 6	ccd 7	ccd 8	ccd 9		ccd 4	ccd 5	ccd 6	ccd 7	ccd 8	ccd 9
level 1 events	37976	46460	28466	36488	35659	26673	grade 0 events	7759	10501	1141	1840	2030	1262
rejected events	28088	20308	25206	19790	28353	23412		20%	22%	4%	5%	5%	4%
rejected %	73%	43%	88%	54%	79%	87%	grade 1 events	36	64	10	51	19	10
								0%	0%	0%	0%	0%	0%
							grade 2 events	686	5234	595	3530	1630	555
								1%	11%	2%	9%	4%	2%
							grade 3 events	461	859	457	1665	767	417
								1%	1%	1%	4%	2%	1%
							grade 4 events	469	852	426	1646	717	429
								1%	1%	1%	4%	2%	1%
							grade 5 events	1141	2908	1161	3260	1536	1196
								3%	6%	4%	8%	4%	4%
							grade 6 events	513	8709	642	8019	2162	598
								1%	18%	2%	21%	6%	2%
							grade 7 events	26911	17333	24034	16477	26798	22206
								70%	37%	84%	45%	75%	83%

2.2 Compared Parameters

Parameter	Planned	Actual	Parameter	Planned	Actual
Instrument	ACIS	ACIS	Obspar format version number	7	7
Detector	ACIS-456789	ACIS-456789	Obspar file type	PREDICTED	ACTUAL
Grating	NONE	NONE	Obspar update status	NONE	UPDATED
Data mode	FAINT	FAINT	CCD I0 on	N	N
Observation mode	POINTING	POINTING	CCD I1 on	N	N
[deg] Pointing RA	121.007715	121.0277779673284	CCD I2 on	N	N
[deg] Pointing Dec	5.129310	5.110634454034933	CCD I3 on	N	N
[deg] Pointing Roll	286.001469	286.156311472997	CCD S0 on	O1	Y
[mm] SIM focus pos	-0.684267	-0.6828225247311905	CCD S1 on	Y	Y
[mm] SIM defocus	0	0.001444936568705701	CCD S2 on	Y	Y
[mm] SIM translation stage pos	-190.132523	-190.1425803651734	CCD S3 on	Y	Y
[mm] SIM translation stage offset	0	0.01005778216563158	CCD S4 on	Y	Y
[s] Observation start time (MET)	319490579.184000	319490202.81976	CCD S5 on	O2	Y
Observation start date	2008-02-15T19:21:54	2008-02-15T19:16:42	Number of optional ACIS chips dropped	0	0
[s] Observation end time (MET)	319500579.184000	319502037.98283	On-chip summing requested	N	N
Observation end date	2008-02-15T22:08:34	2008-02-15T22:33:57	Subarray requested	CUSTOM	1/4
Read mode	TIMED	TIMED	Subarray start row	385	385
			Subarray row count	256	256
			Alternating exposures requested	N	N
			[s] Primary exposure time	0.000000	1.1

2.3 Aspect





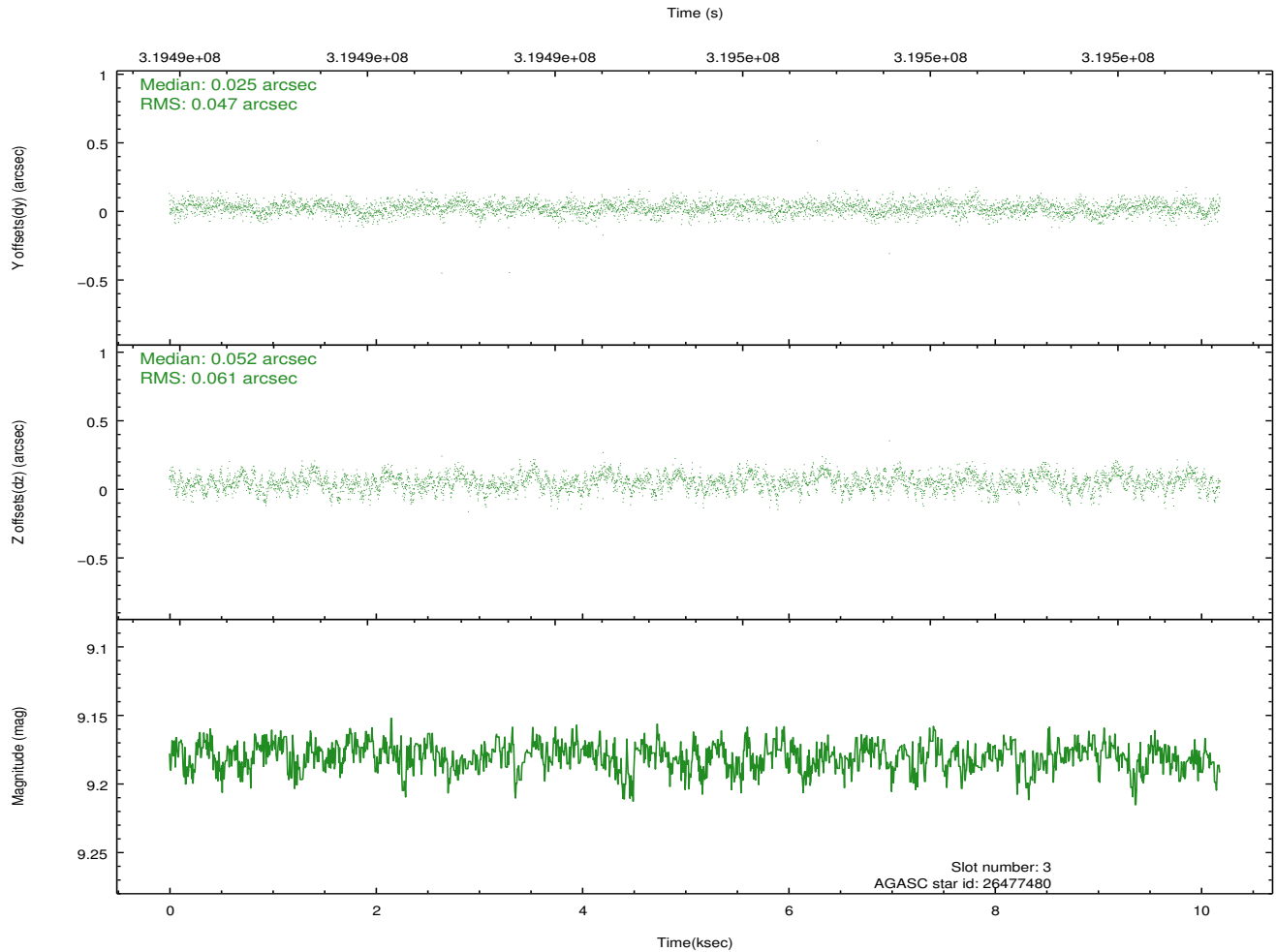
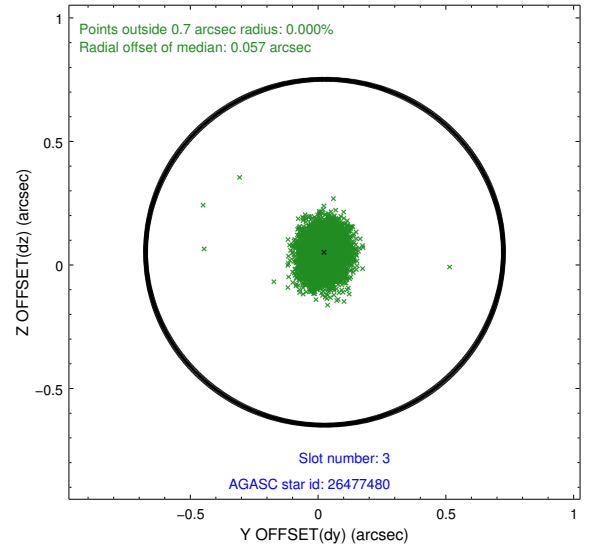
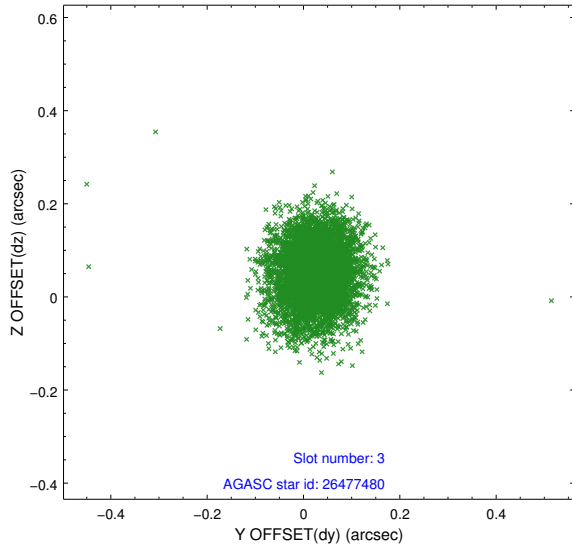
Slot Statistics

slot	status	id	mag	n_pts	med_dy	med_dz	dr1	dr2	ra	dec	mean_y	mean_z
0	FID	ACIS-S-2	7.10	2484	-0.060	-0.060	0.008	0.013	0.000000	0.000000	-766.99	-1735.25
1	FID	ACIS-S-4	7.19	2484	0.190	0.045	0.008	0.014	0.000000	0.000000	2146.30	172.80
2	FID	ACIS-S-5	7.23	2484	-0.161	0.024	0.007	0.011	0.000000	0.000000	-1819.27	167.04
3	GUIDE	26477480	9.18	4966	0.025	0.052	0.080	0.131	120.719802	5.482207	-1505.57	-641.36
4	GUIDE	26478808	7.25	4969	-0.129	-0.074	0.063	0.099	121.530150	5.559485	-973.97	2226.52
5	GUIDE	26479112	8.92	4963	-0.032	-0.008	0.076	0.123	121.440982	5.412421	-552.50	1774.44
6	GUIDE	26487192	6.90	4969	0.039	-0.139	0.065	0.102	120.481632	4.541449	1513.66	-2397.30
7	GUIDE	26487640	8.93	4963	0.093	0.165	0.084	0.134	121.326715	5.418691	-686.14	1386.10

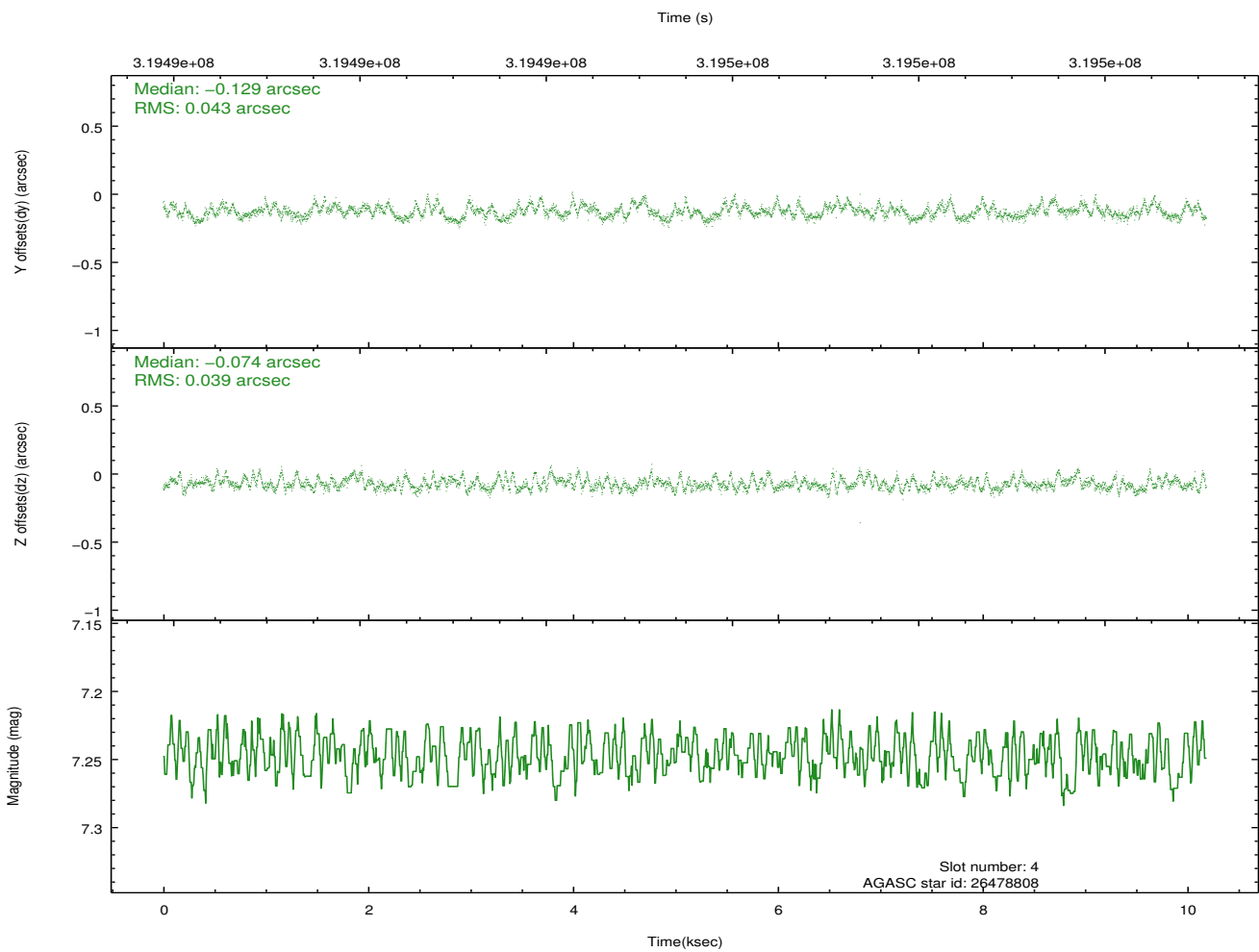
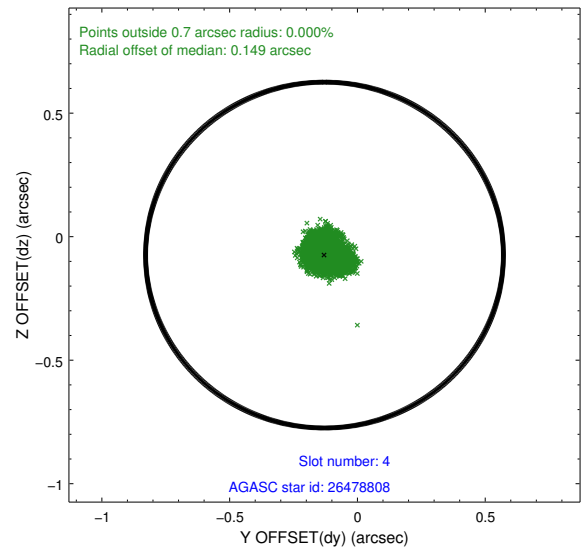
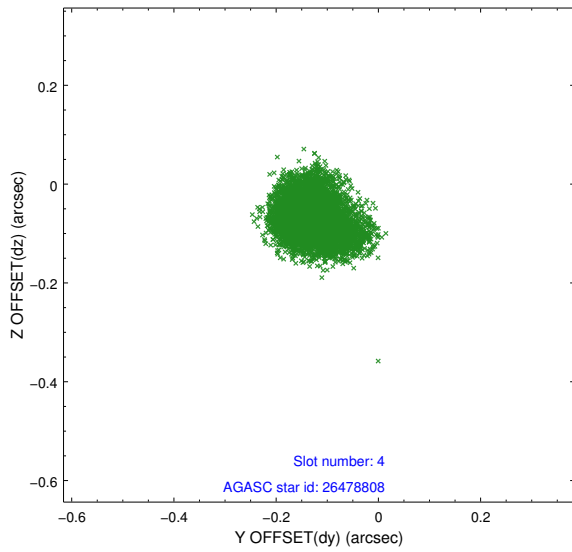
∞

2.4 Star Slots

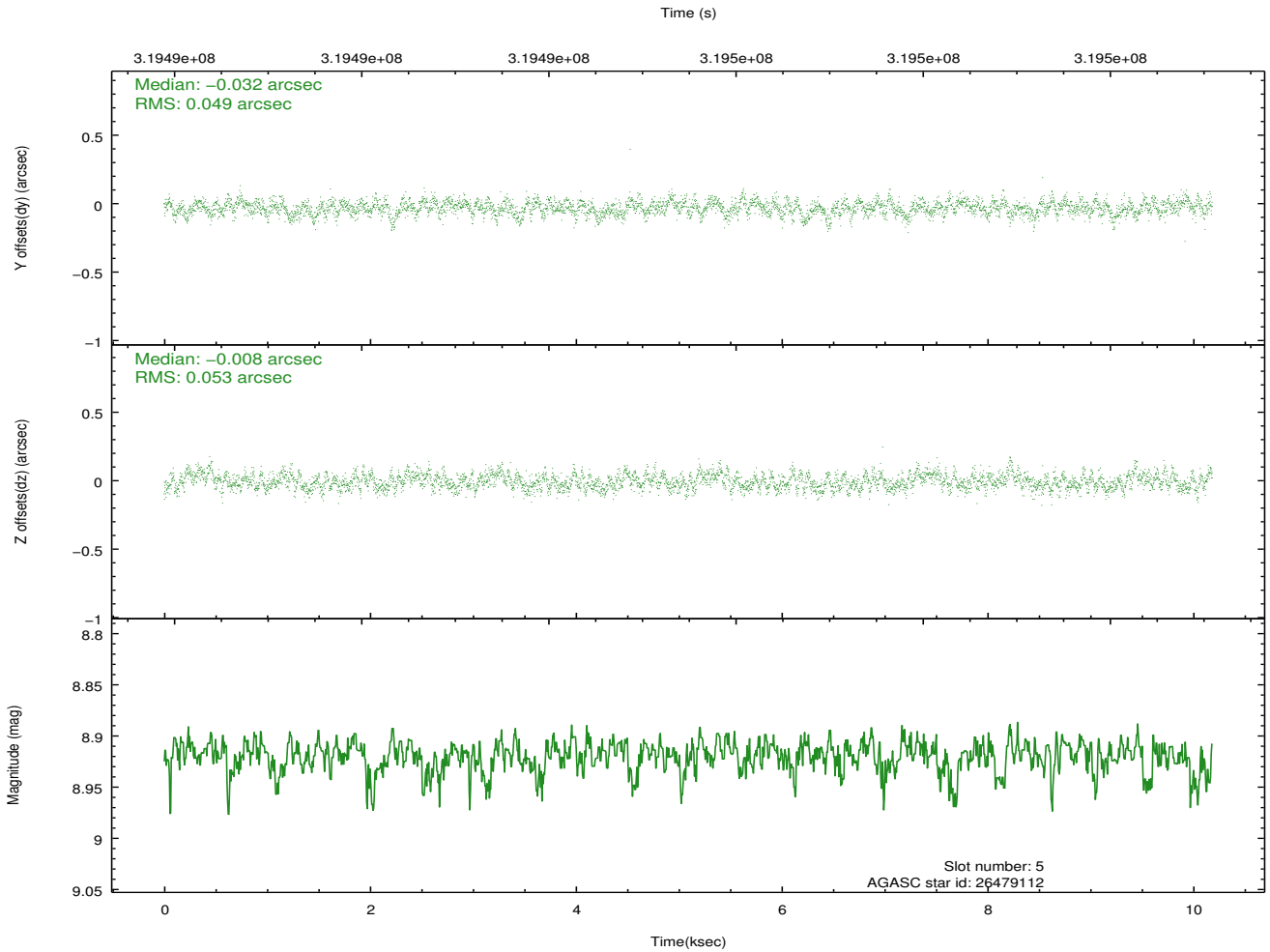
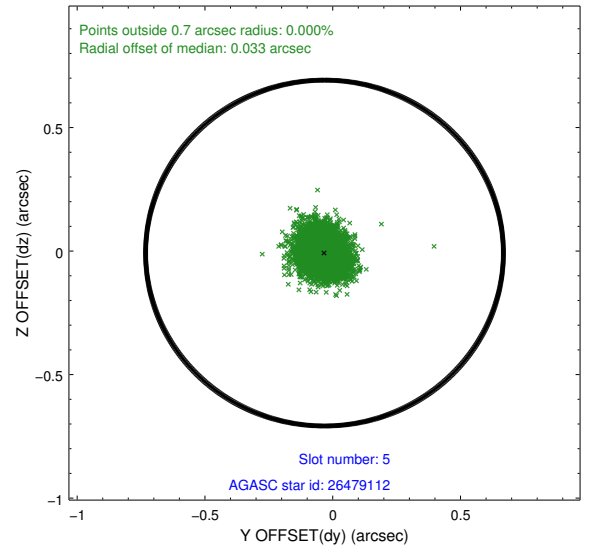
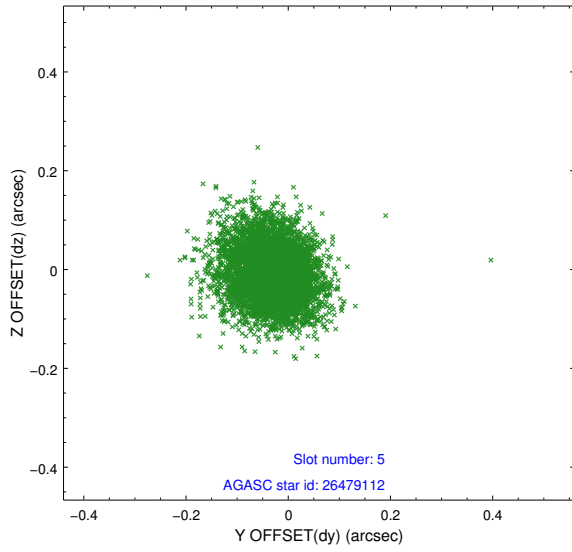
2.4.1 Slot 3



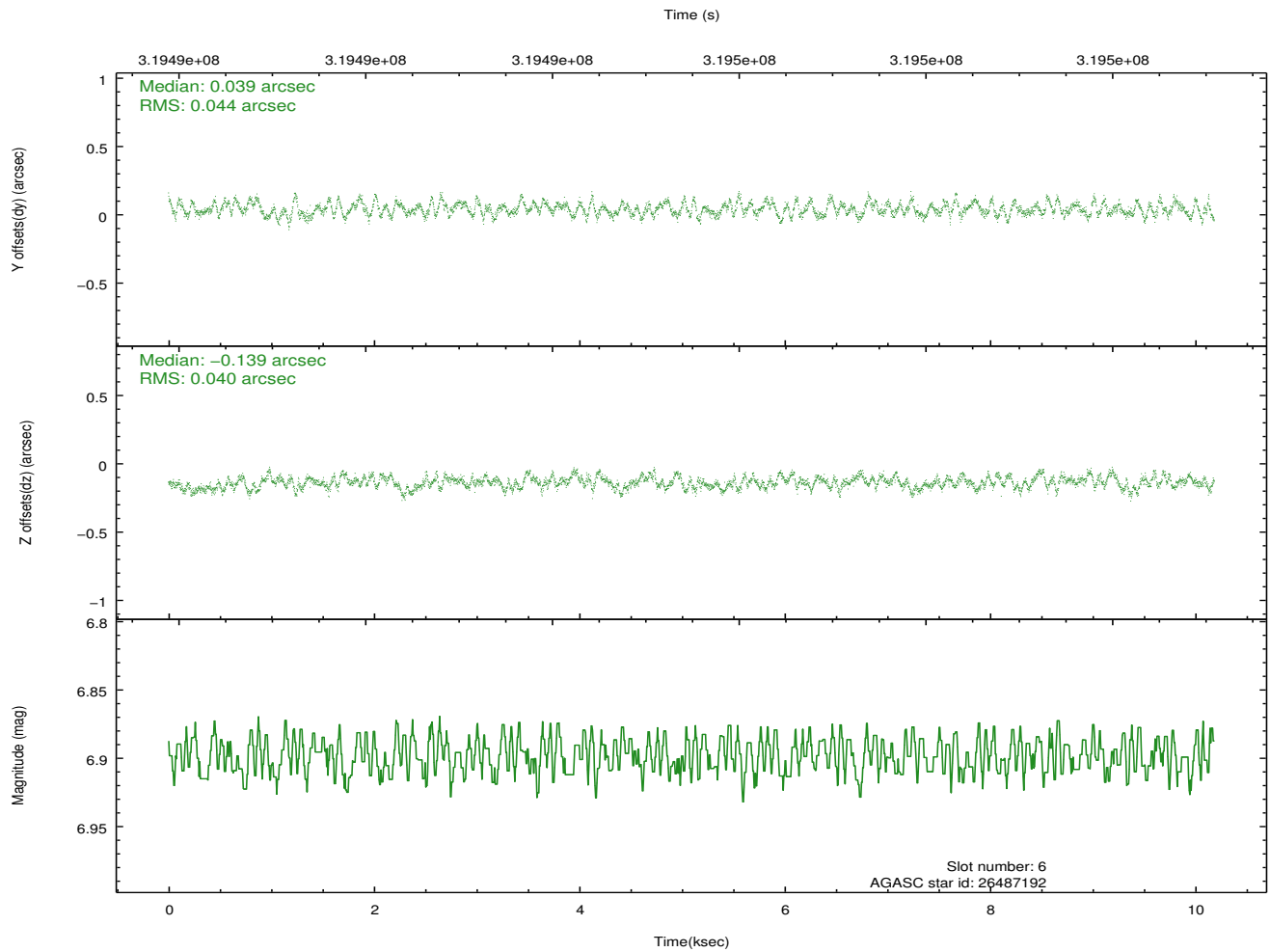
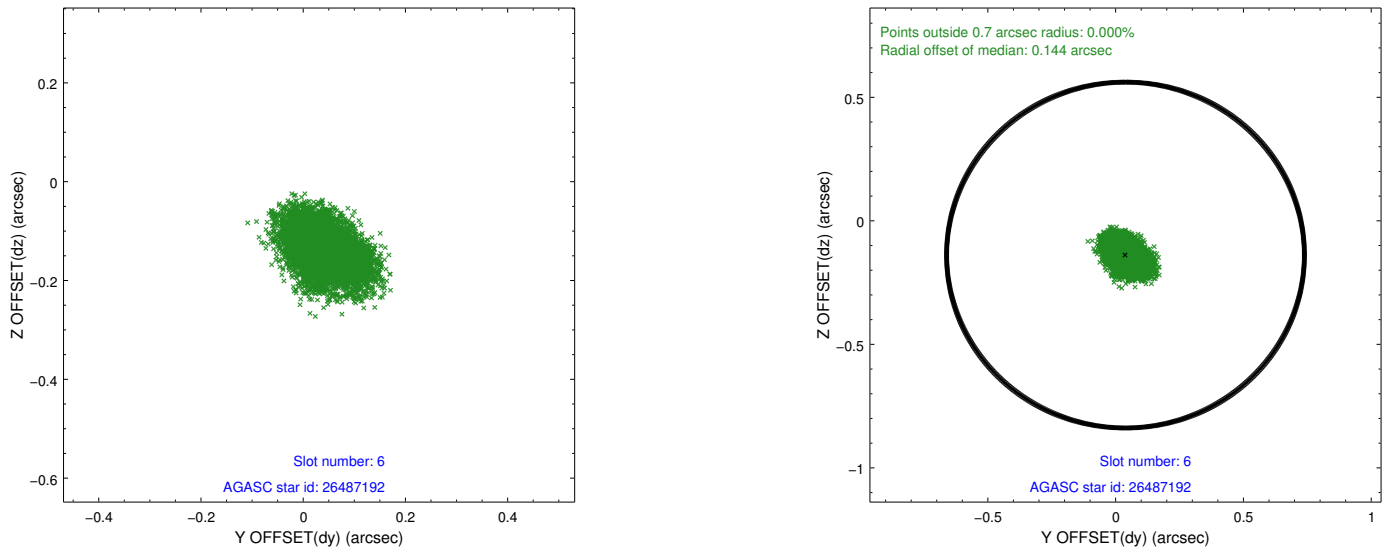
2.4.2 Slot 4



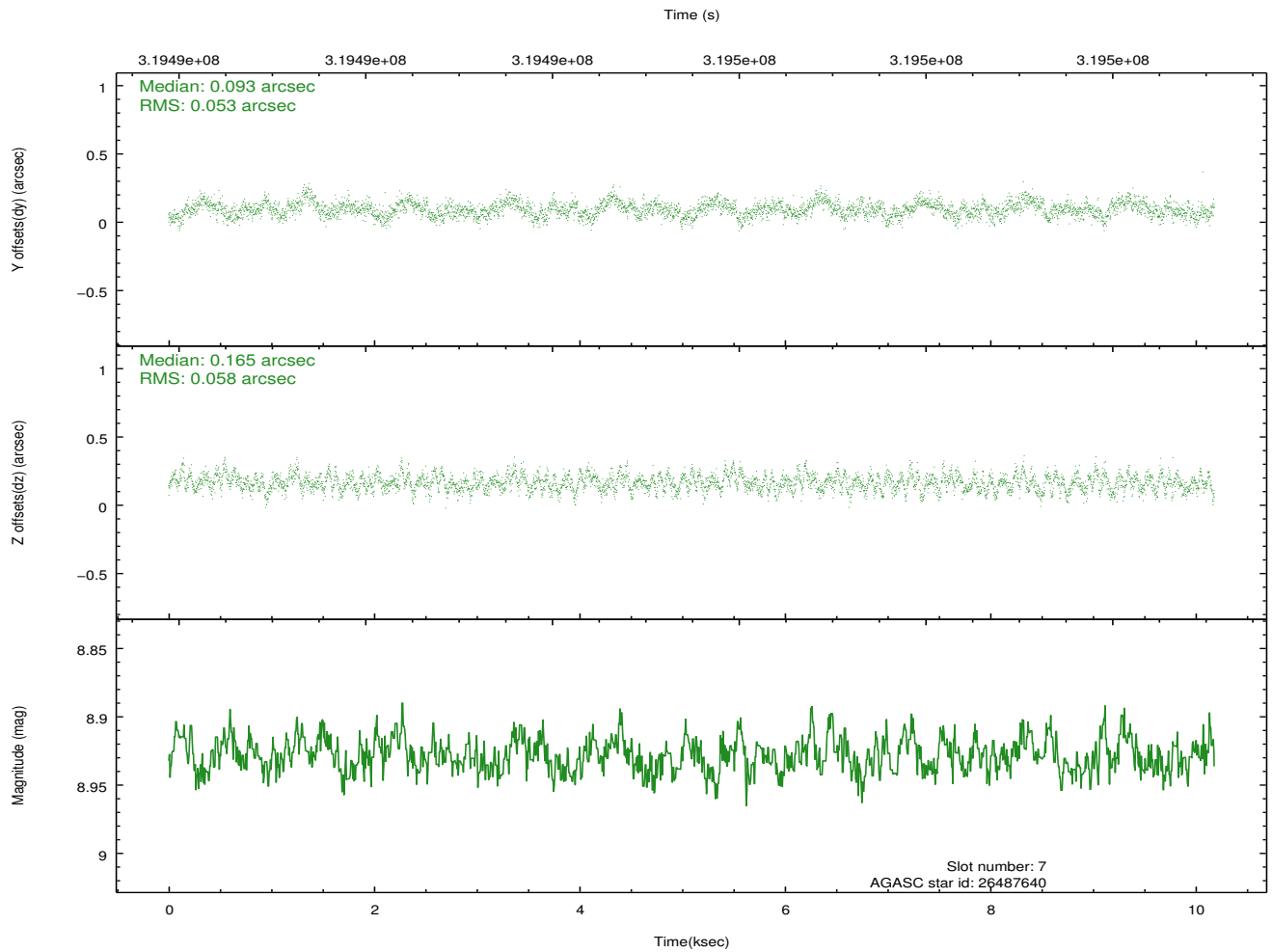
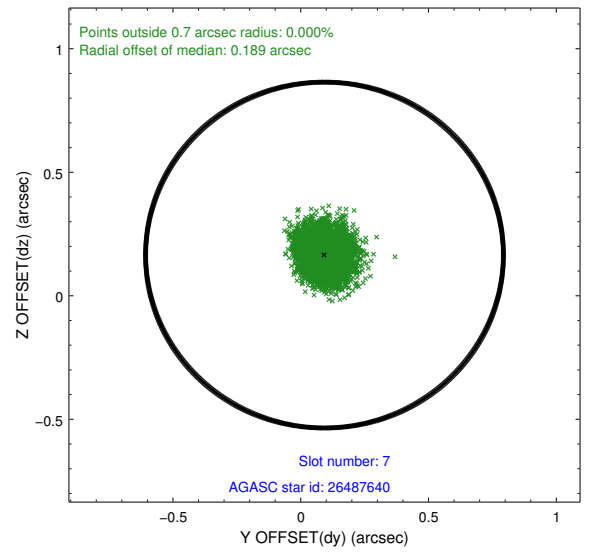
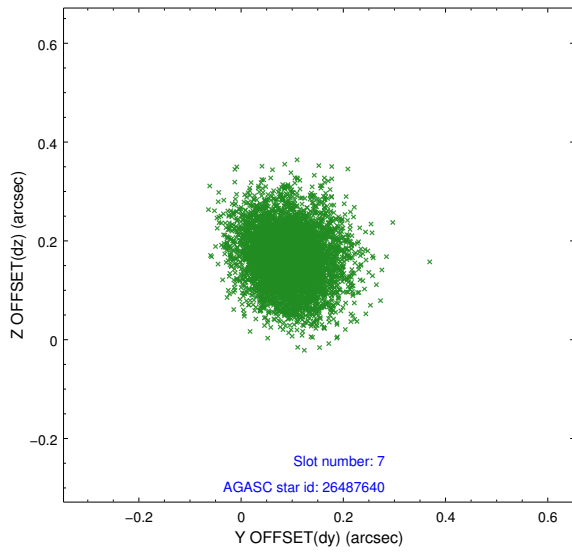
2.4.3 Slot 5



2.4.4 Slot 6

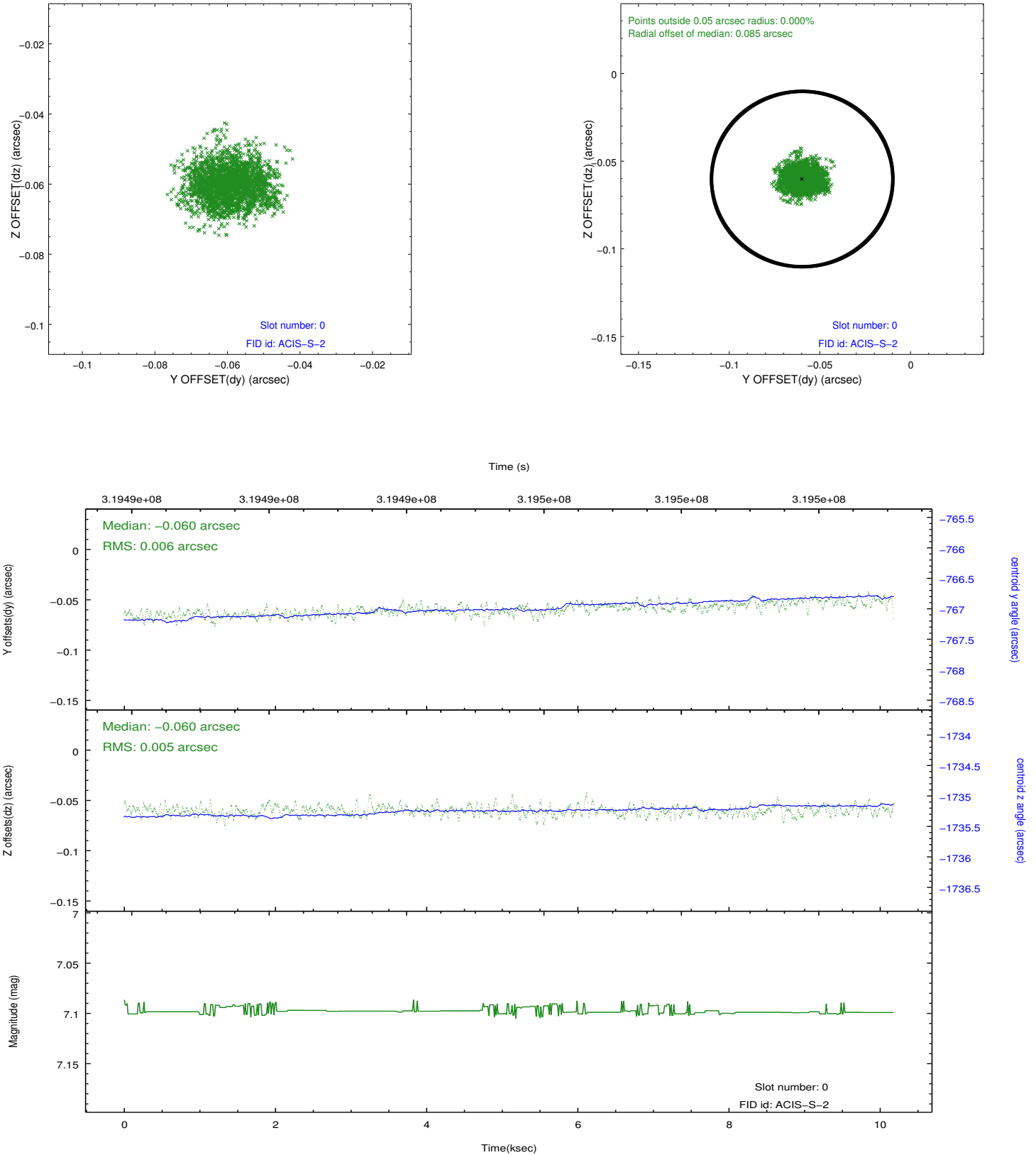


2.4.5 Slot 7

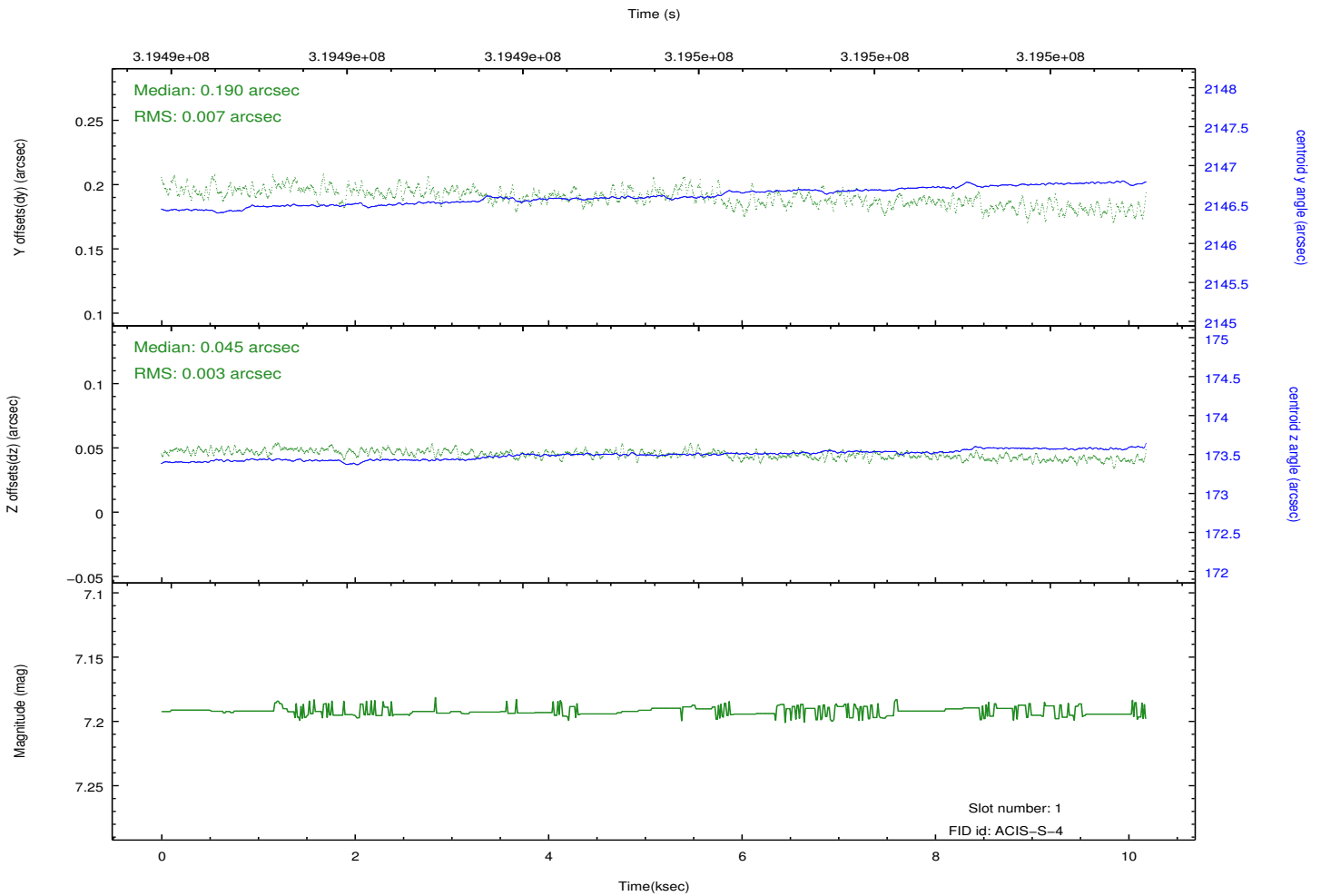
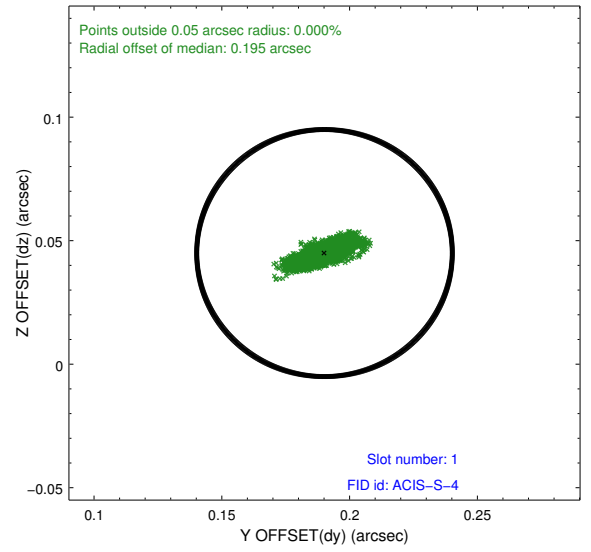
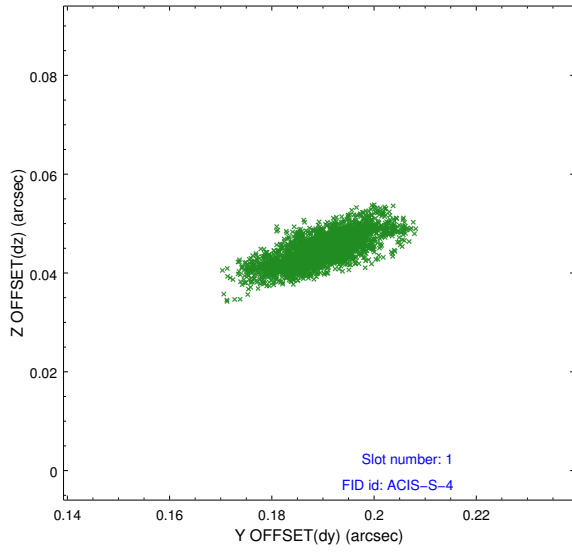


2.5 FID Slots

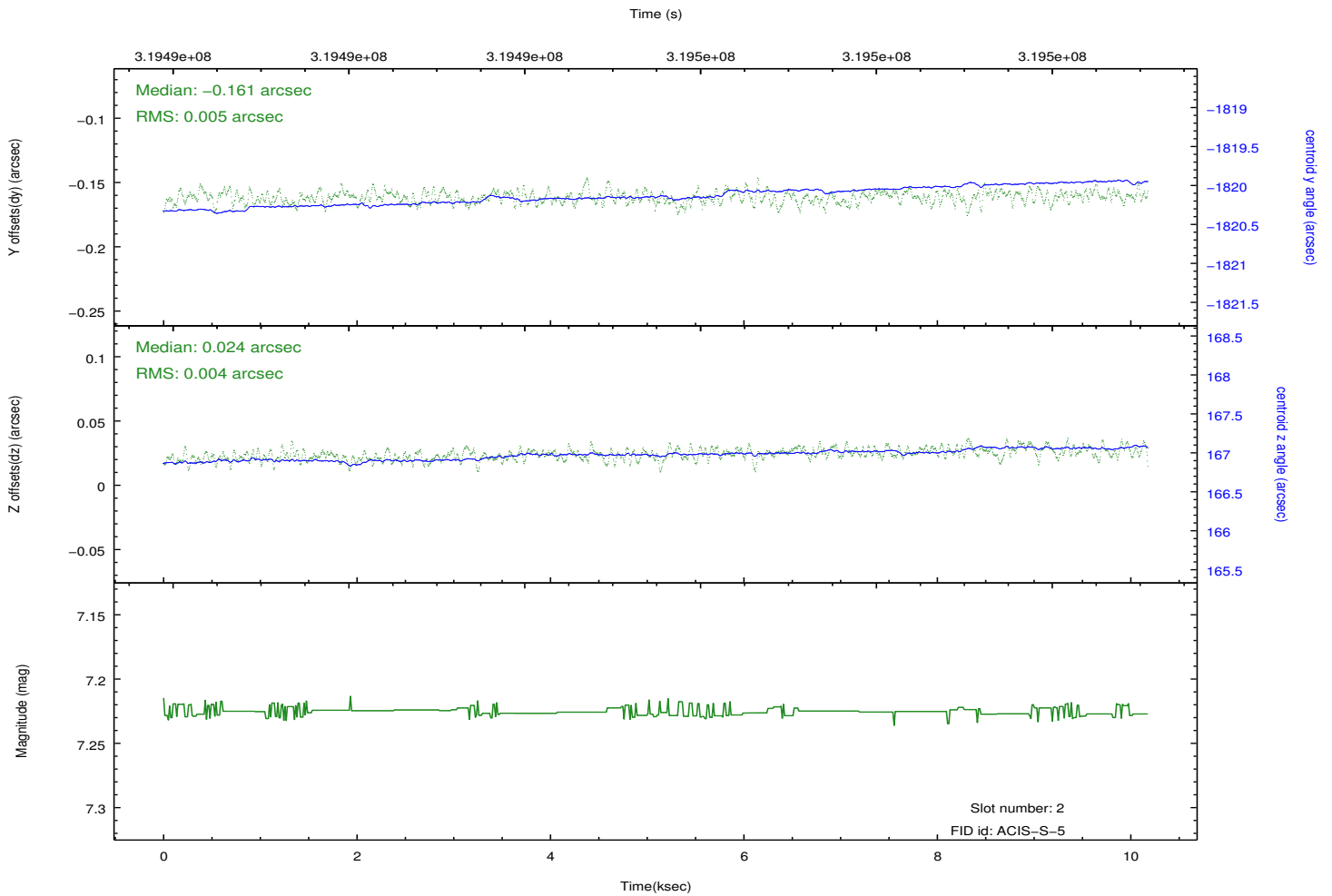
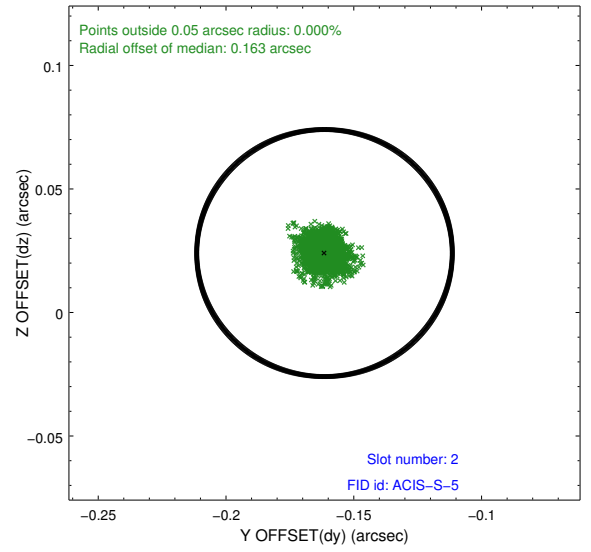
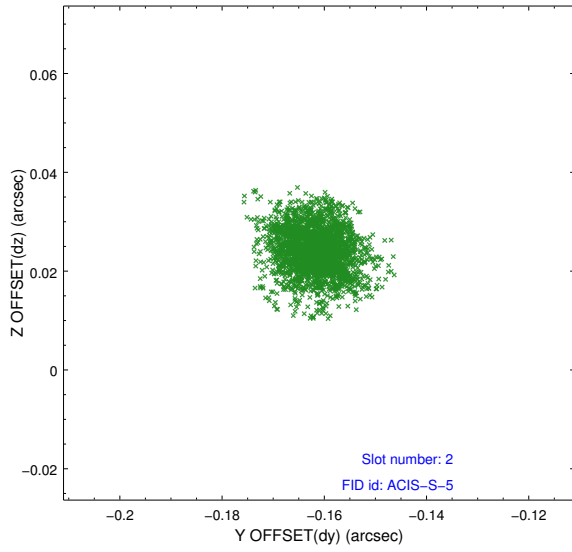
2.5.1 Slot 0



2.5.2 Slot 1



2.5.3 Slot 2



A Summary

A.1 Status

V&V Scientist	Jen Lauer
V&V Date (YYYY-MM-DD)	2012.05.11
V&V Edition	1
V&V Disposition and Status	OK
V&V Charge Time	9.76690021

A.2 Comments