

V&V Reference Report

L2 ASCDS Version : 8.4.5

Observation 946 - L2 Version 4
Chandra X-Ray Center

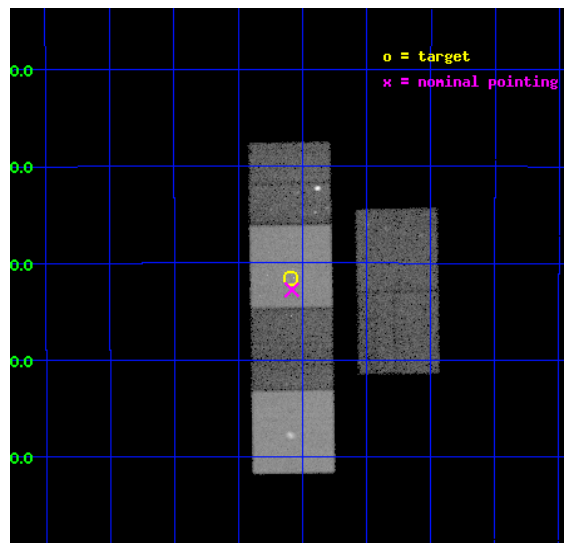
L2 Processing Date : Aug 30 2012

Contents

1	Front	2
2	OBI	3
2.1	OBI	3
2.1.1	Images	3
2.1.2	Bias	3
2.1.3	Parameters	4
2.1.4	Events	4
2.2	Compared Parameters	5
2.3	Aspect	6
2.4	Star Slots	9
2.4.1	Slot 3	9
2.4.2	Slot 4	10
2.4.3	Slot 5	11
2.4.4	Slot 6	12
2.4.5	Slot 7	13
2.5	FID Slots	14
2.5.1	Slot 0	14
2.5.2	Slot 1	15
2.5.3	Slot 2	16
A	Summary	17
A.1	Status	17
A.2	Comments	17

1 Front

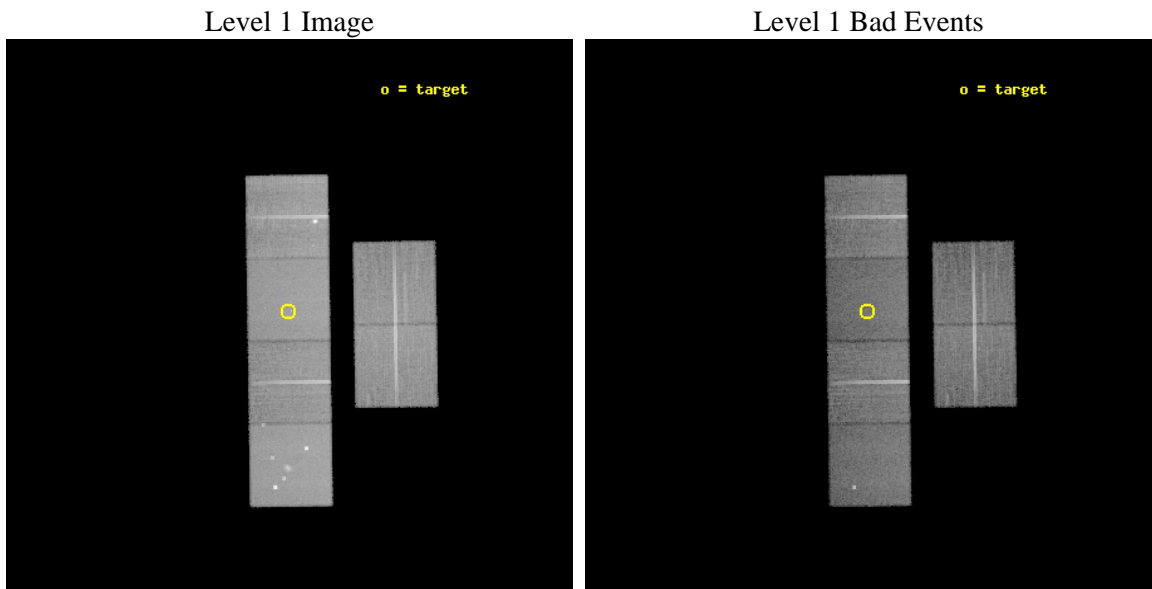
seq_num	300025	Sequence number
obs_id	946	Observation id
title	A STUDY OF THE POPULATIONS OF FAINT X-RAY SOURCES IN GLOBULAR CLUSTERS	Proposal title
observer	Prof. Walter Lewin	Principal investigator
object	NGC 6121	Source name
dtcycle	0	
cycle	P	events from which exps? Prim/Second/Both
ra_targ	245.897917	Observer's specified target RA [deg]
dec_targ	-26.525306	Observer's specified target Dec [deg]
ra_nom	245.89549684777	Nominal RA [deg]
dec_nom	-26.546242024172	Nominal Dec [deg]
roll_nom	269.14607709346	Nominal Roll [deg]
revision	4	Processing version of data
ontime	26147.200024337	Sum of GTIs [s]
livetime	25816.108433675	Livetime [s]
ontime2	26147.200024337	Sum of GTIs [s]
ontime3	26143.959064096	Sum of GTIs [s]
ontime5	26147.200024337	Sum of GTIs [s]
ontime6	26147.200024337	Sum of GTIs [s]
ontime7	26147.200024337	Sum of GTIs [s]
ontime8	26147.200024337	Sum of GTIs [s]
l2events	266739	Number of level 2 events



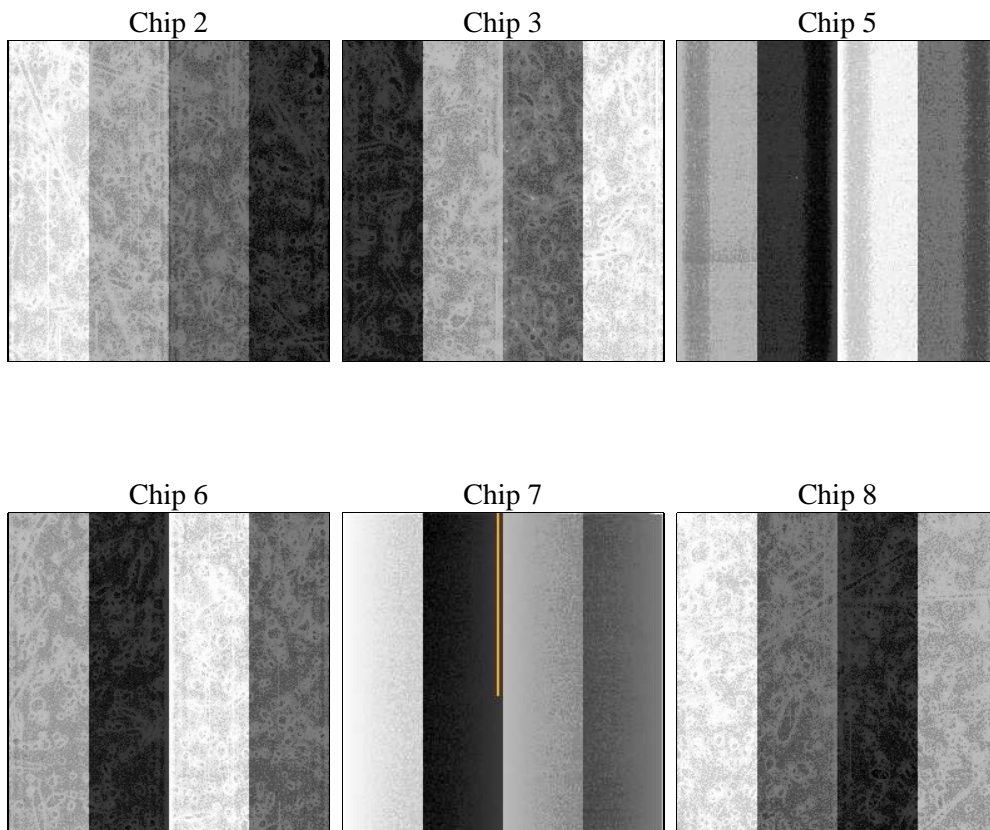
2 OBI

2.1 OBI

2.1.1 Images



2.1.2 Bias



2.1.3 Parameters

obi_num	0	Obi number	sched_exp_time	26000.000000	[s] Scheduled observation exposure time
ascdsver	8.4.5	Processing system revision	ontime	26147.200024337	Sum of GTIs [s]
caldbver	4.5.1.1	 	ontime2	26147.200024337	Sum of GTIs [s]
date	2012-08-30T01:30:39	Date and time of file creation	ontime3	26143.959064096	Sum of GTIs [s]
revision	4	Processing version of data	ontime5	26147.200024337	Sum of GTIs [s]
			ontime6	26147.200024337	Sum of GTIs [s]
			ontime7	26147.200024337	Sum of GTIs [s]
			ontime8	26147.200024337	Sum of GTIs [s]
			l1events	1207614	Number of level 1 events

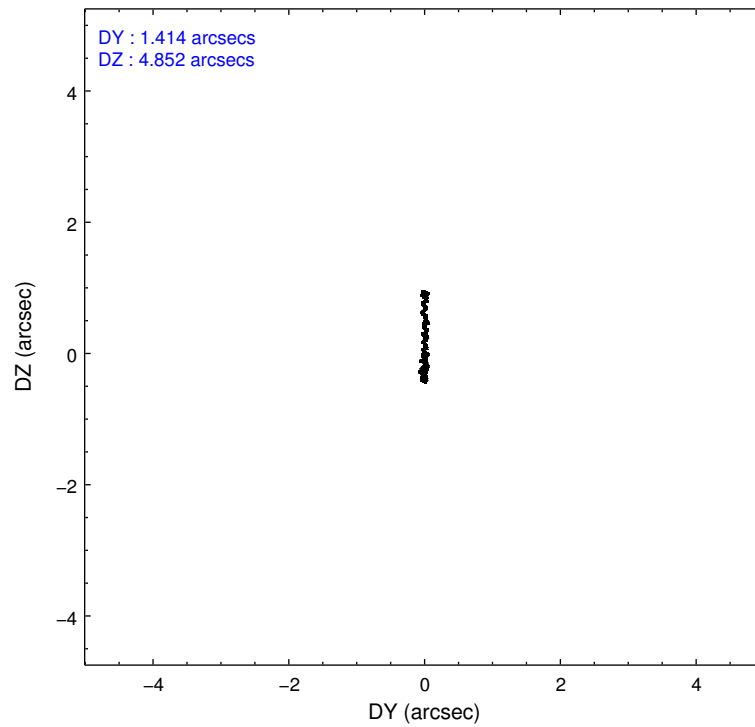
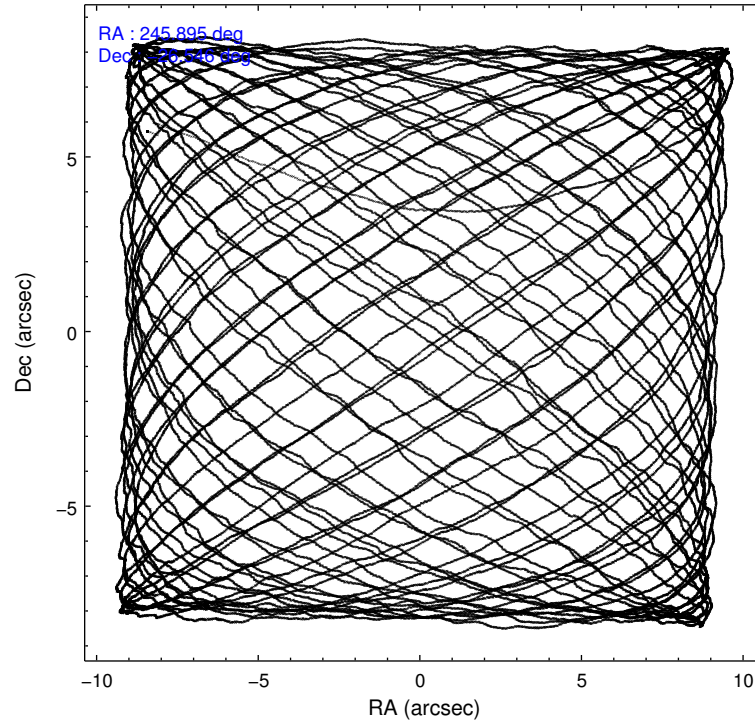
2.1.4 Events

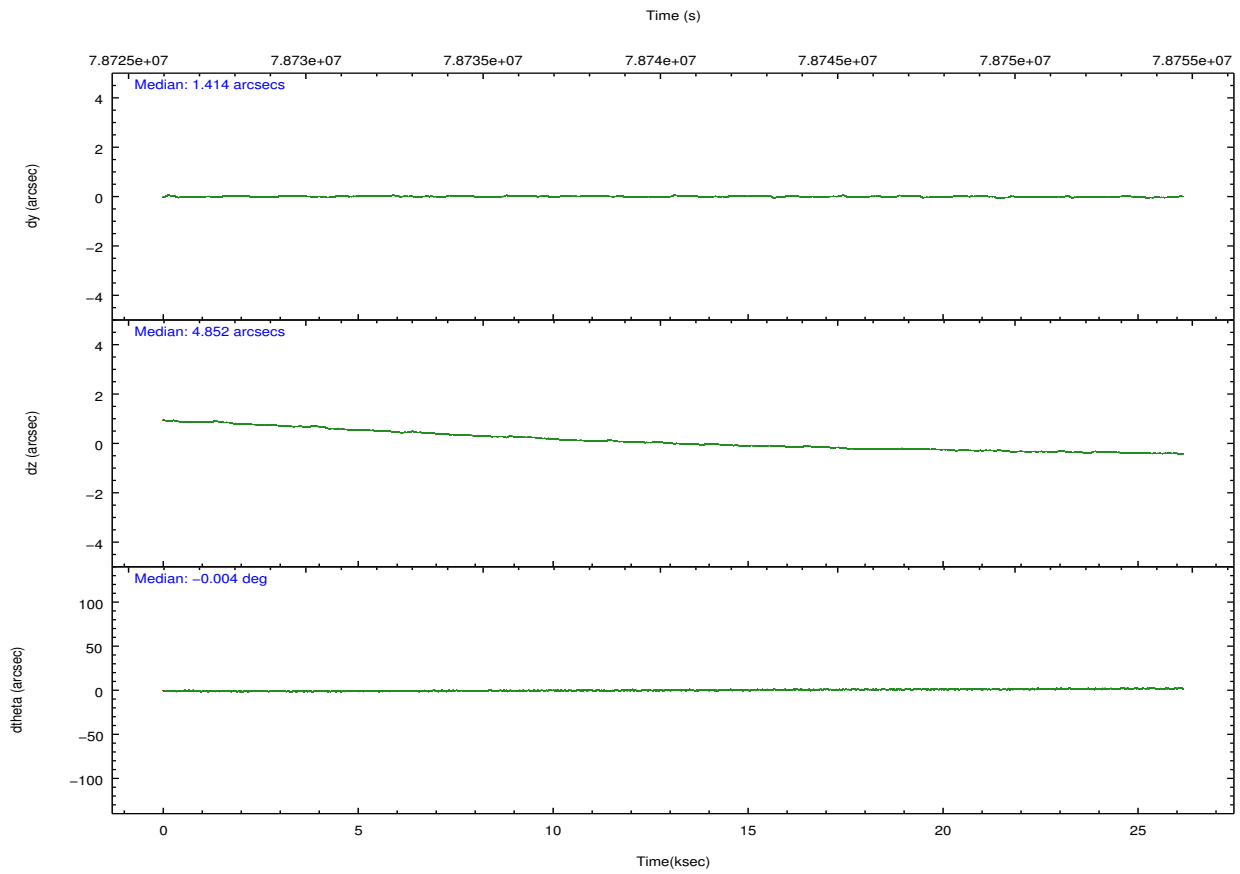
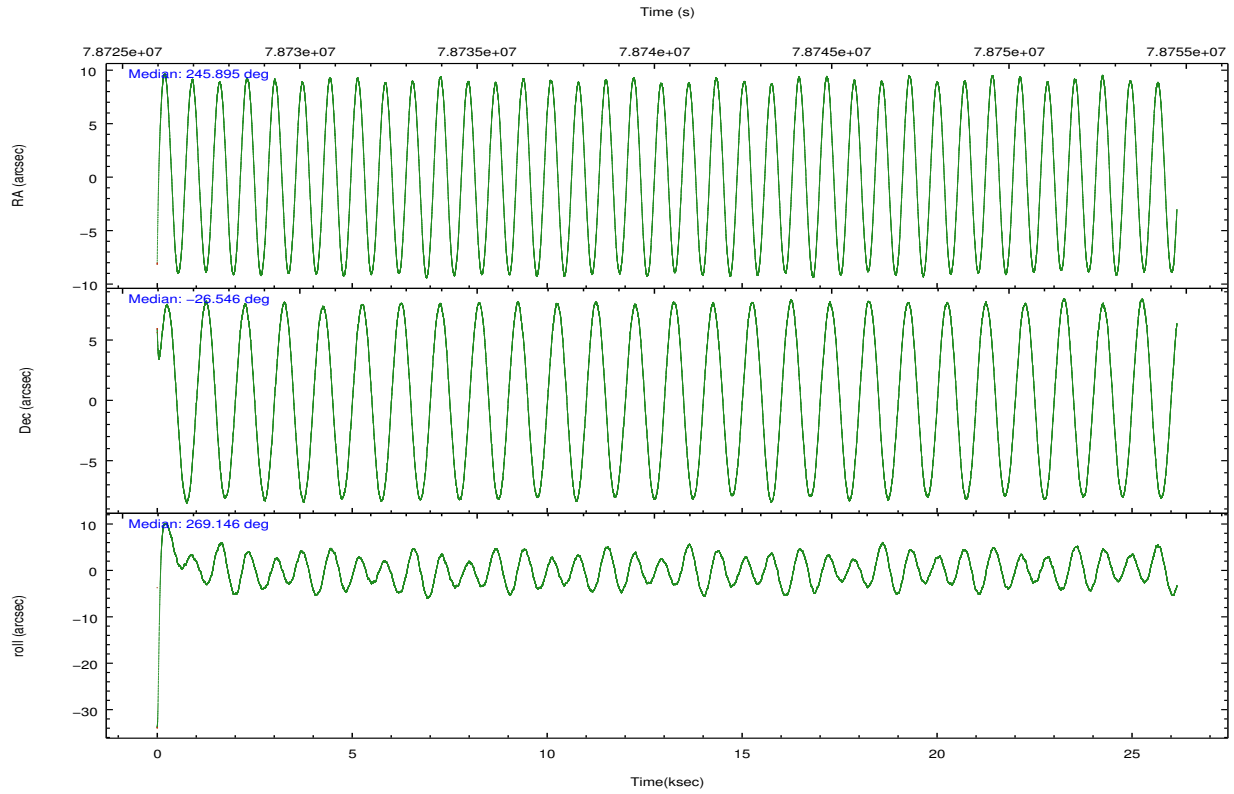
	ccd 2	ccd 3	ccd 5	ccd 6	ccd 7	ccd 8		ccd 2	ccd 3	ccd 5	ccd 6	ccd 7	ccd 8
level 1 events	183412	170263	242302	177799	207689	226149	grade 0 events	8053	8821	19463	8977	9120	21280
rejected events	164349	150909	123248	157260	118709	175840		4%	5%	8%	5%	4%	9%
rejected %	89%	88%	50%	88%	57%	77%	grade 1 events	81	76	274	76	211	166
								0%	0%	0%	0%	0%	0%
							grade 2 events	4189	3768	35140	3987	17693	9352
								2%	2%	14%	2%	8%	4%
							grade 3 events	1833	1883	5568	1928	8398	4938
								0%	1%	2%	1%	4%	2%
							grade 4 events	1829	1764	5209	1918	8434	4565
								0%	1%	2%	1%	4%	2%
							grade 5 events	5617	5920	17811	6749	19957	8340
								3%	3%	7%	3%	9%	3%
							grade 6 events	3247	3189	54128	3802	45679	10382
								1%	1%	22%	2%	21%	4%
							grade 7 events	158563	144842	104709	150362	98197	167126
								86%	85%	43%	84%	47%	73%

2.2 Compared Parameters

Parameter	Planned	Actual	Parameter	Planned	Actual
Instrument	ACIS	ACIS	Obspar format version number	7	7
Detector	ACIS-235678	ACIS-235678	Obspar file type	PREDICTED	ACTUAL
Grating	NONE	NONE	Obspar update status	NONE	UPDATED
Data mode	FAINT	FAINT	Number of optional ACIS chips dropped	0	0
Observation mode	POINTING	POINTING	On-chip summing requested	N	N
[deg] Pointing RA	245.880465	245.8954968477694	Subarray requested	NONE	NONE
[deg] Pointing Dec	-26.522361	-26.54624202417214	Alternating exposures requested	N	N
[deg] Pointing Roll	268.982743	269.1460770934566	[s] Primary exposure time	0.000000	3.2
[mm] SIM focus pos	-0.684267	-0.6828225247311905			
[mm] SIM defocus	0	0.001444936568705701			
[mm] SIM translation stage pos	-190.132523	-190.1425803651734			
[mm] SIM translation stage offset	0	0.01005778216563158			
[s] Observation start time (MET)	78727432.184000	78726326.924652			
Observation start date	2000-06-30T04:42:48	2000-06-30T04:25:26			
[s] Observation end time (MET)	78753432.184000	78753896.350668			
Observation end date	2000-06-30T11:56:08	2000-06-30T12:04:56			
Read mode	TIMED	TIMED			

2.3 Aspect



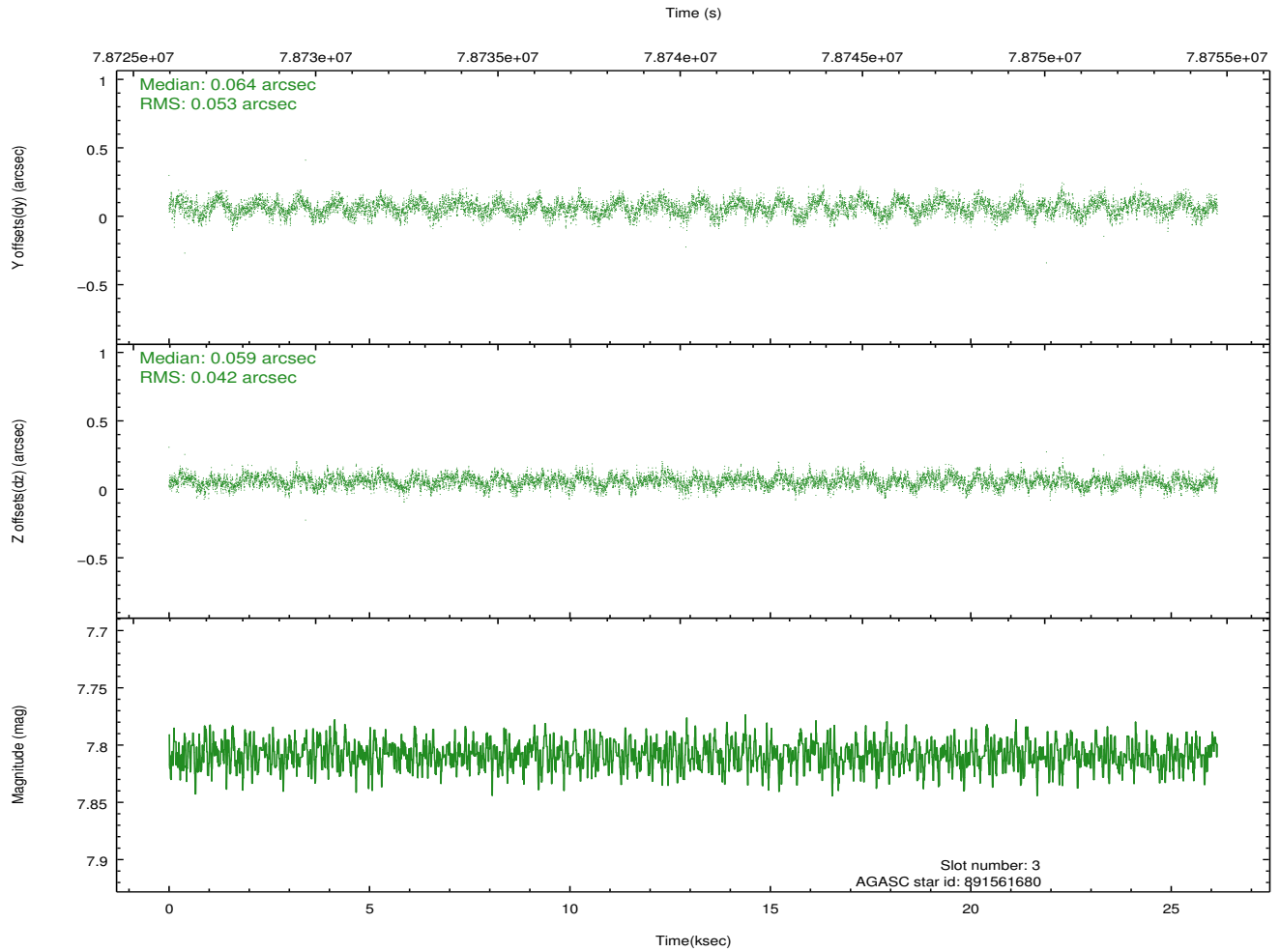
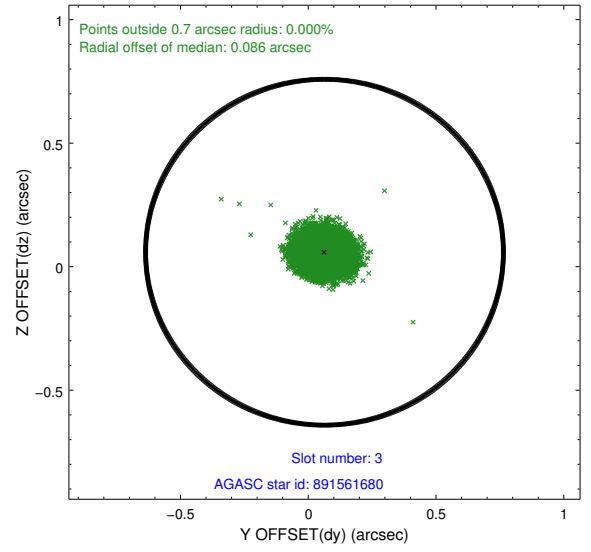
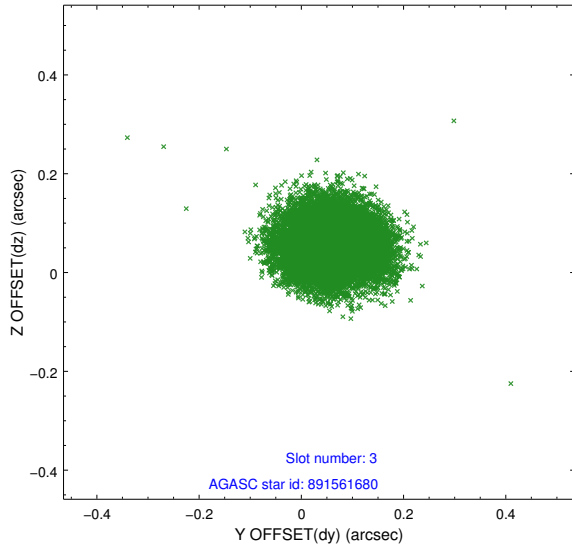


Slot Statistics

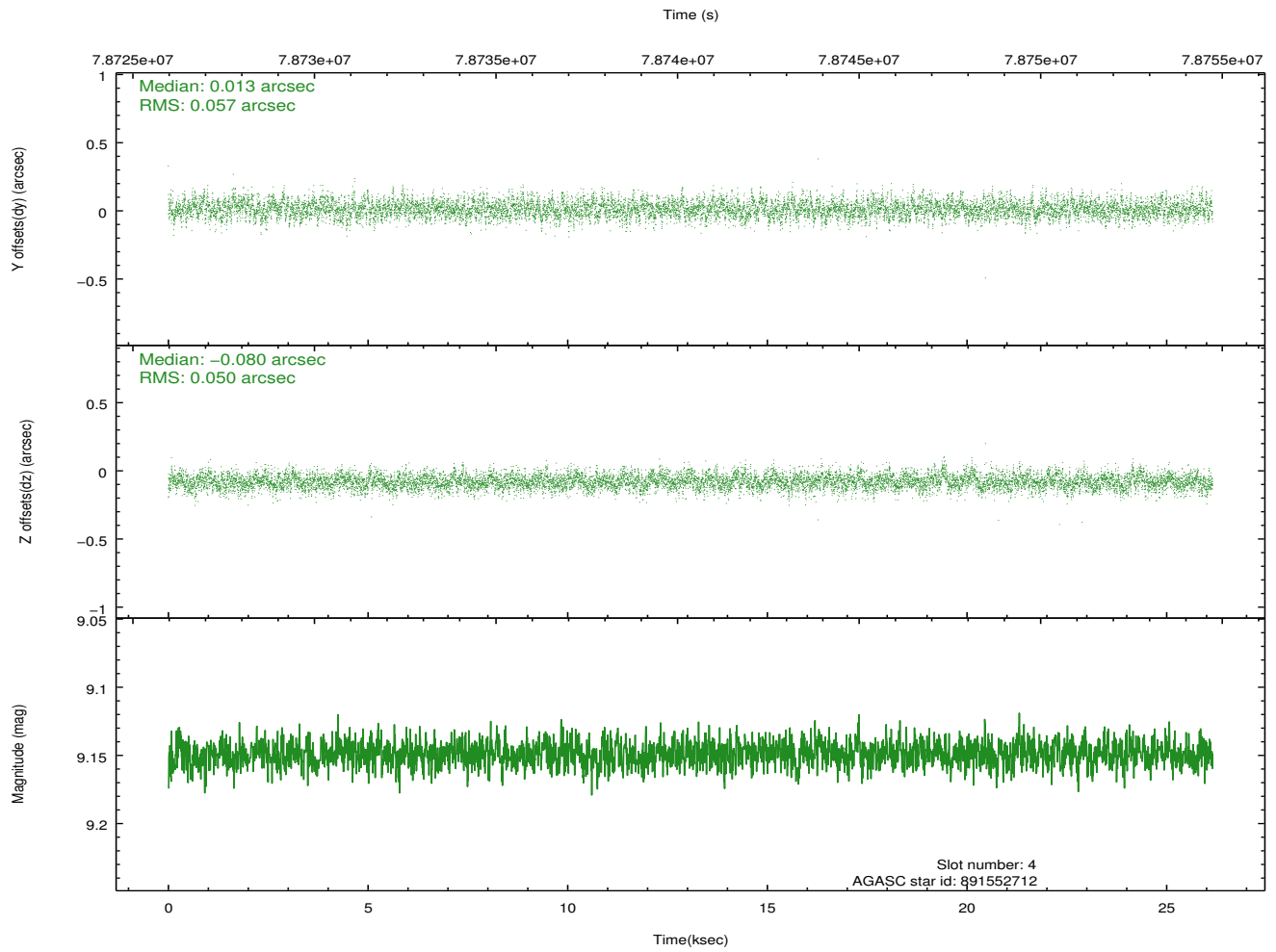
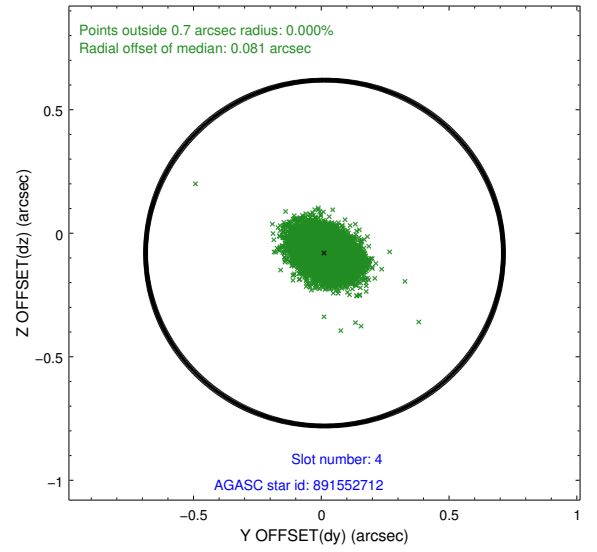
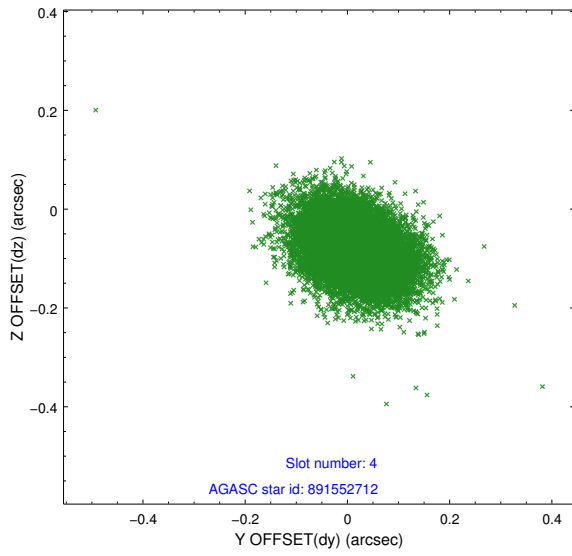
slot	status	id	mag	n_pts	med_dy	med_dz	dr1	dr2	ra	dec	mean_y	mean_z
0	FID	ACIS-S-2	7.11	6380	-0.030	-0.003	0.011	0.016	0.000000	0.000000	-754.04	-1726.02
1	FID	ACIS-S-4	7.21	6380	-0.012	0.015	0.006	0.010	0.000000	0.000000	2159.20	182.37
2	FID	ACIS-S-5	7.24	6378	0.011	-0.003	0.011	0.018	0.000000	0.000000	-1806.71	176.14
3	GUIDE	891561680	7.81	12758	0.064	0.059	0.073	0.115	246.126760	-27.151147	2250.64	829.62
4	GUIDE	891552712	9.15	12759	0.013	-0.080	0.080	0.131	245.946545	-26.271054	-907.57	197.71
5	GUIDE	891027728	9.41	12756	-0.214	-0.013	0.086	0.142	245.449689	-25.946465	-2045.61	-1430.59
6	GUIDE	891027520	9.72	12751	0.048	-0.045	0.113	0.197	246.024674	-26.131311	-1415.16	441.38
7	GUIDE	891560248	9.26	12752	0.086	0.088	0.084	0.140	246.231067	-27.113231	2108.92	1161.75

2.4 Star Slots

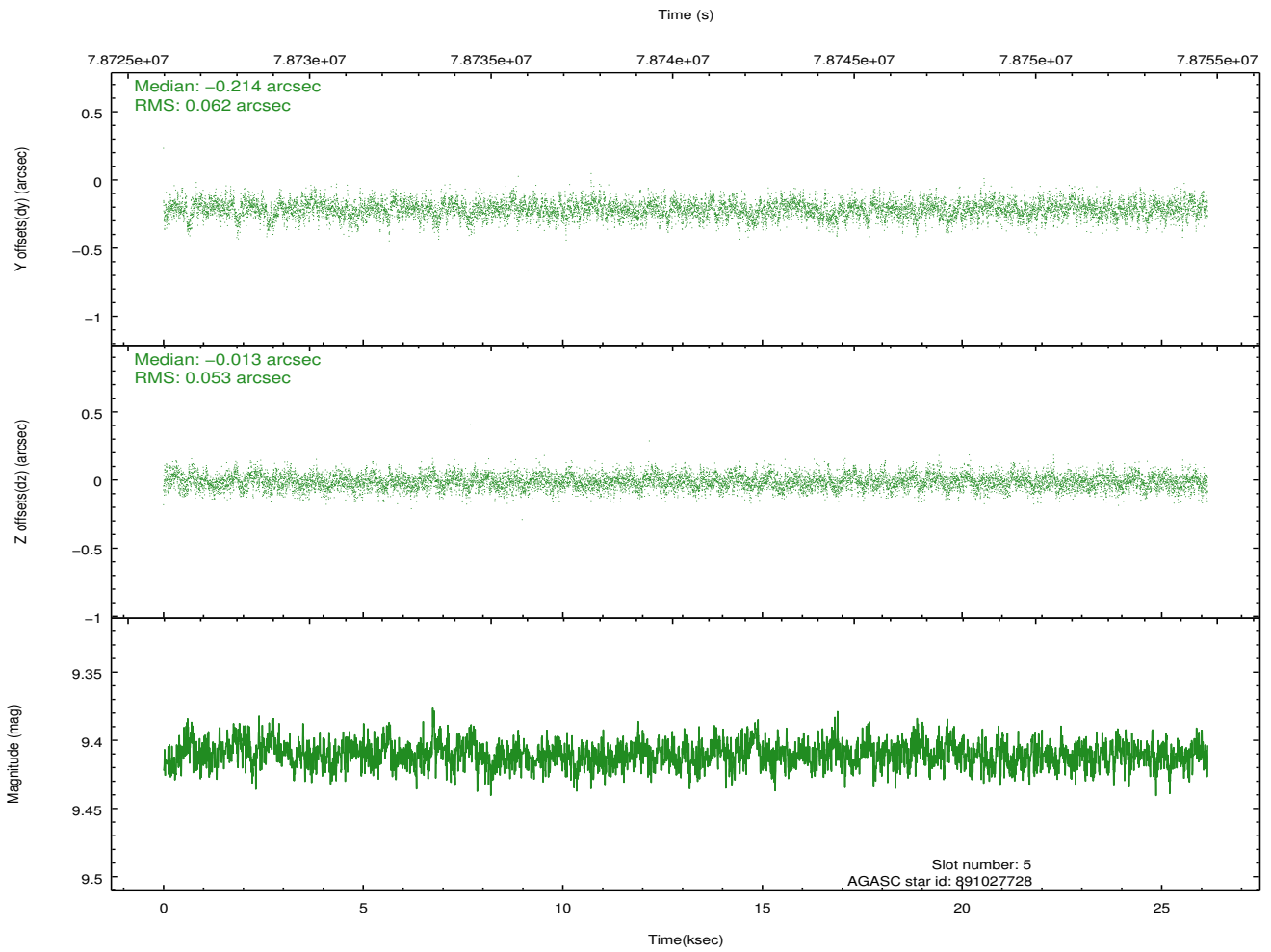
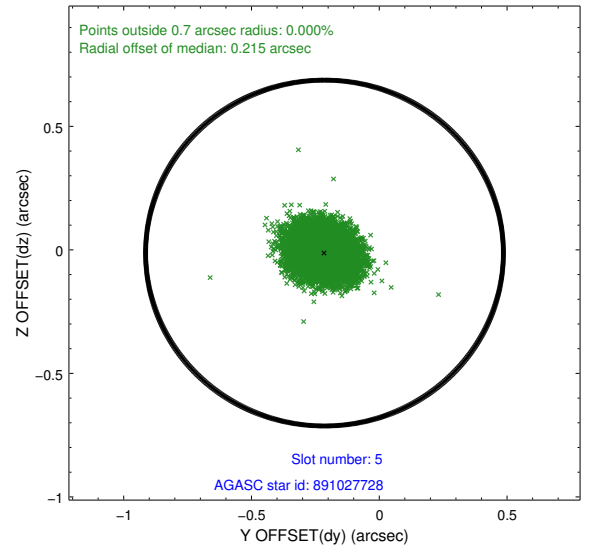
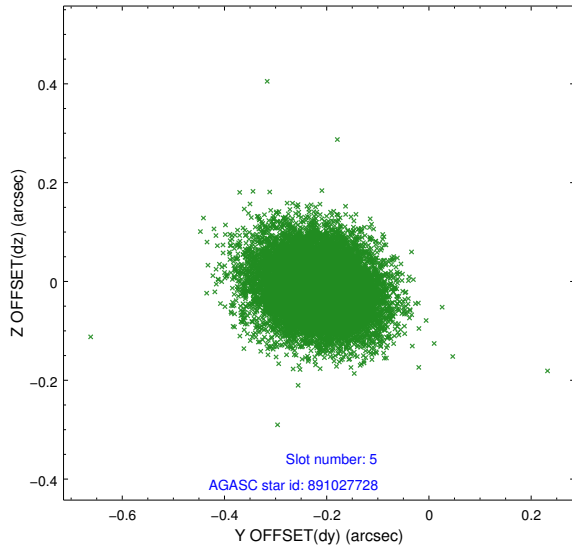
2.4.1 Slot 3



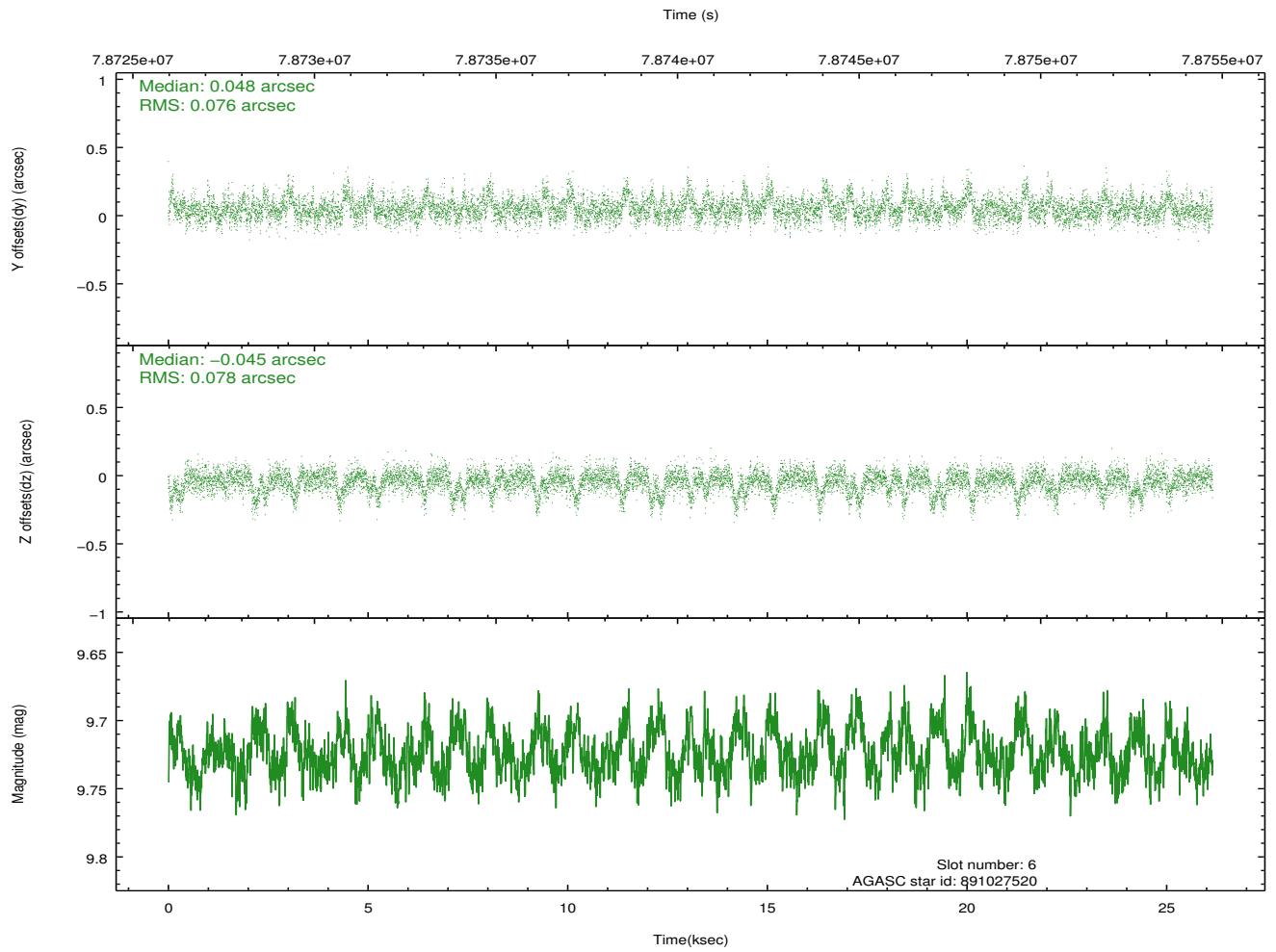
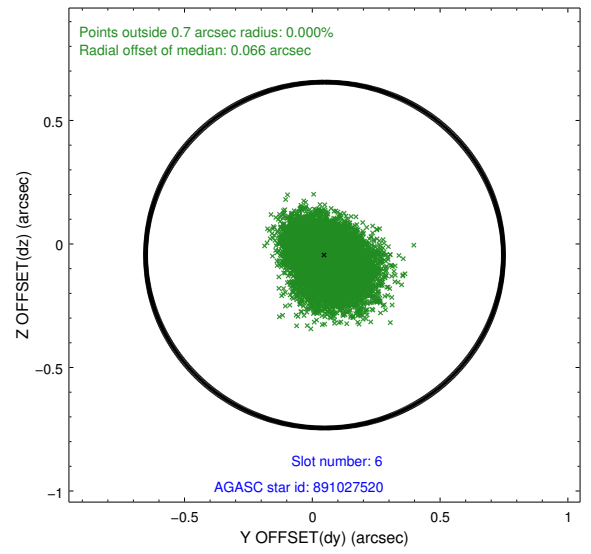
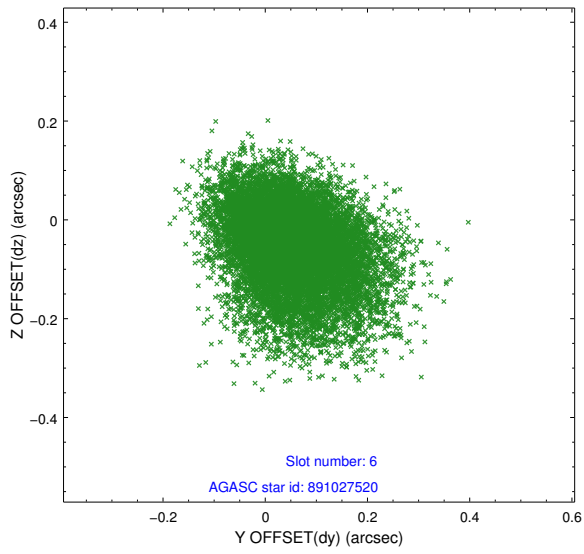
2.4.2 Slot 4



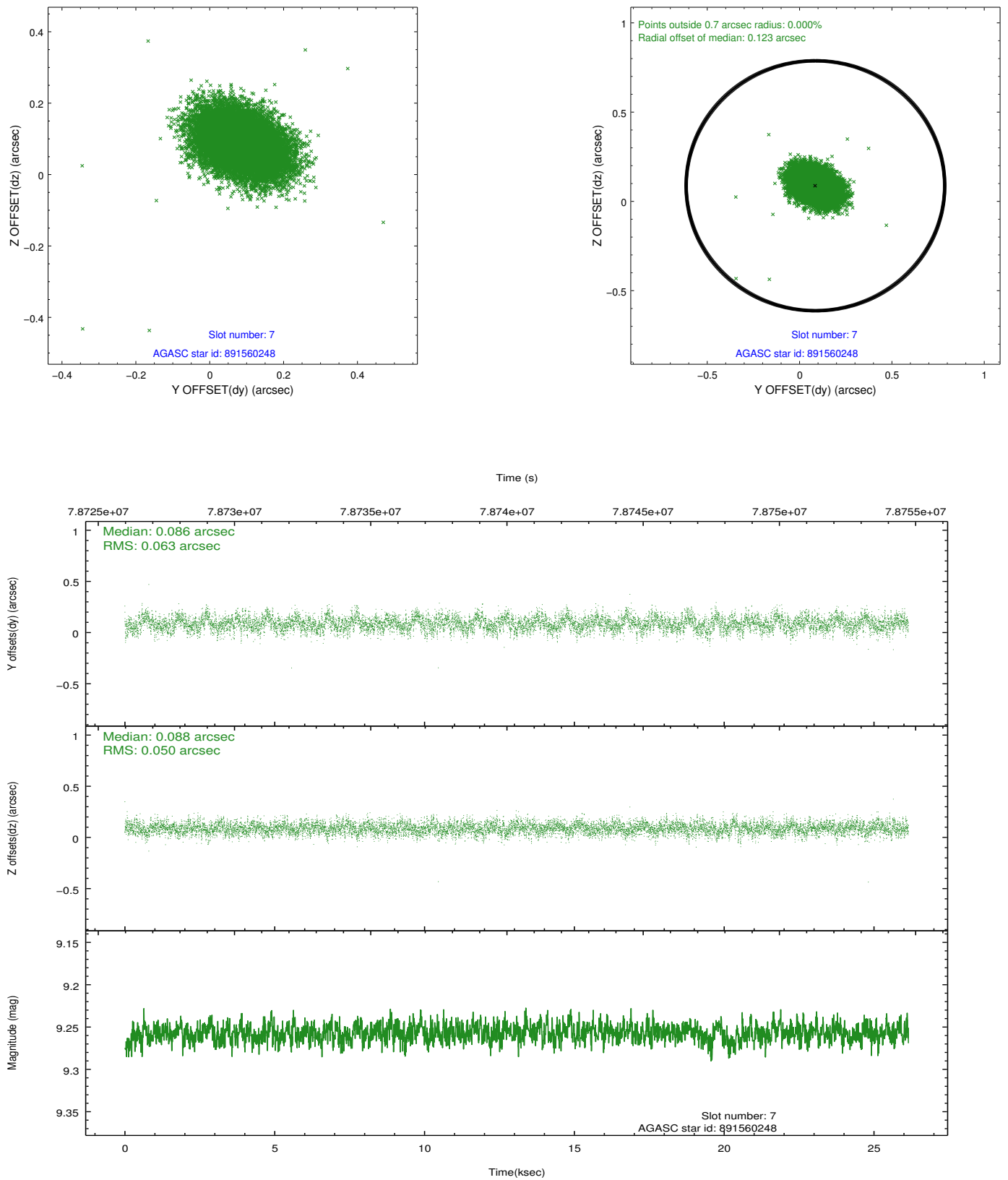
2.4.3 Slot 5



2.4.4 Slot 6

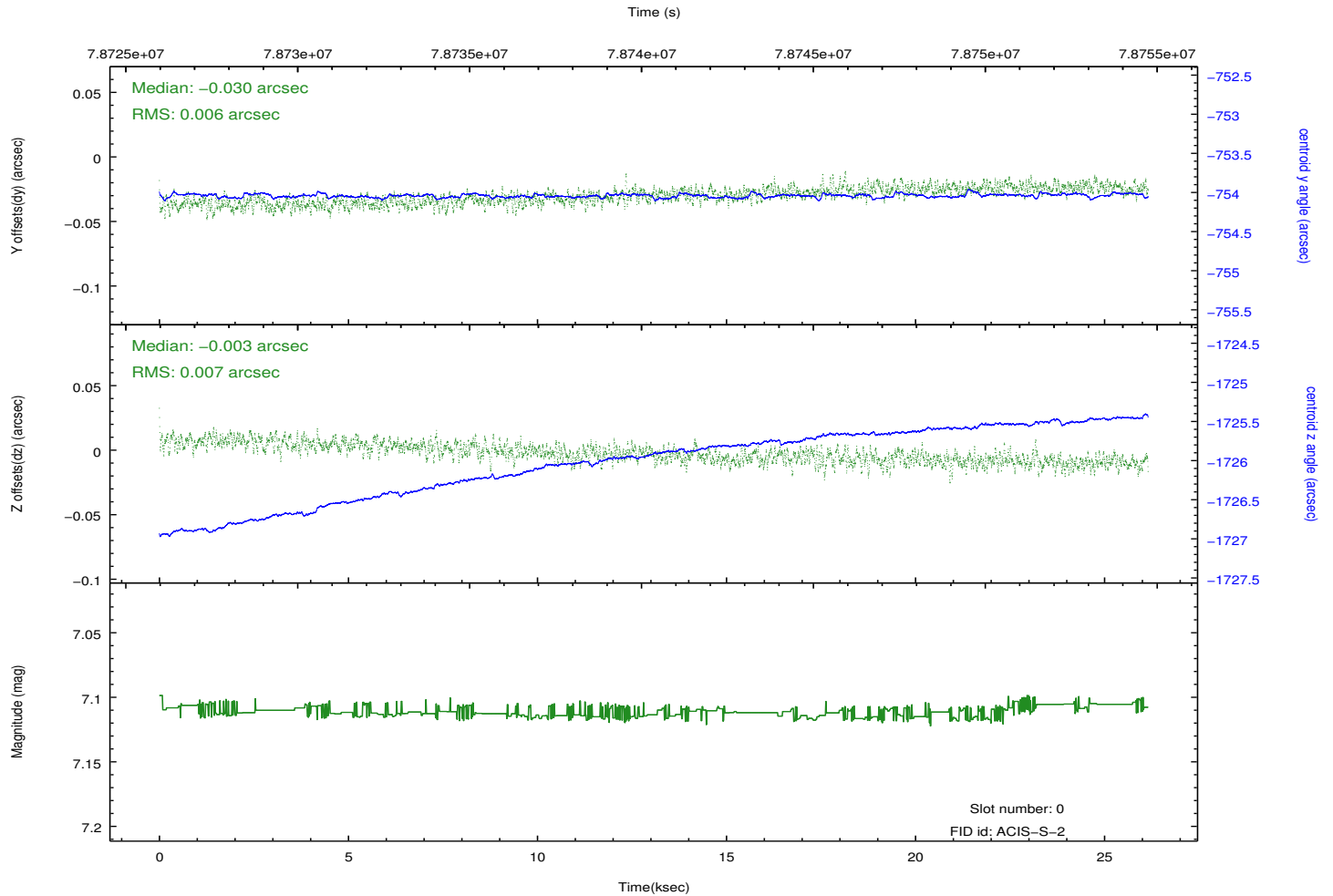
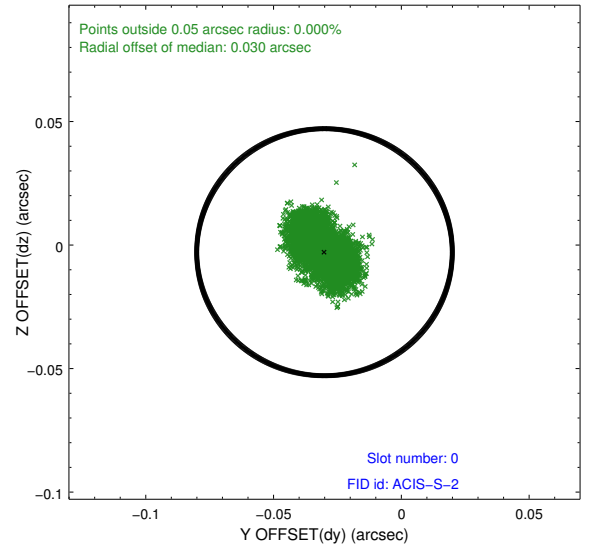
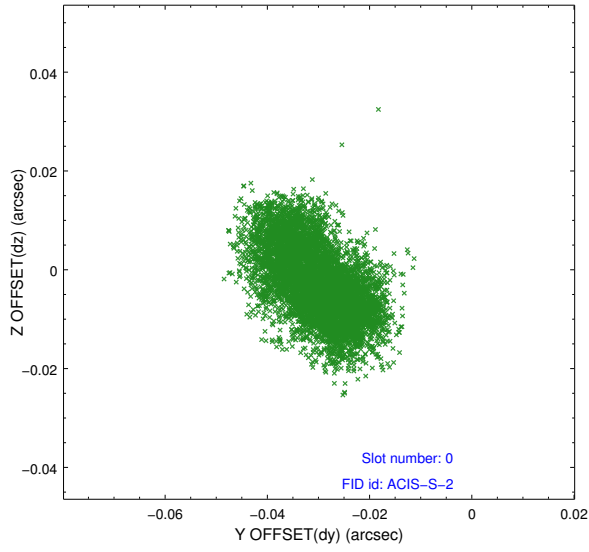


2.4.5 Slot 7

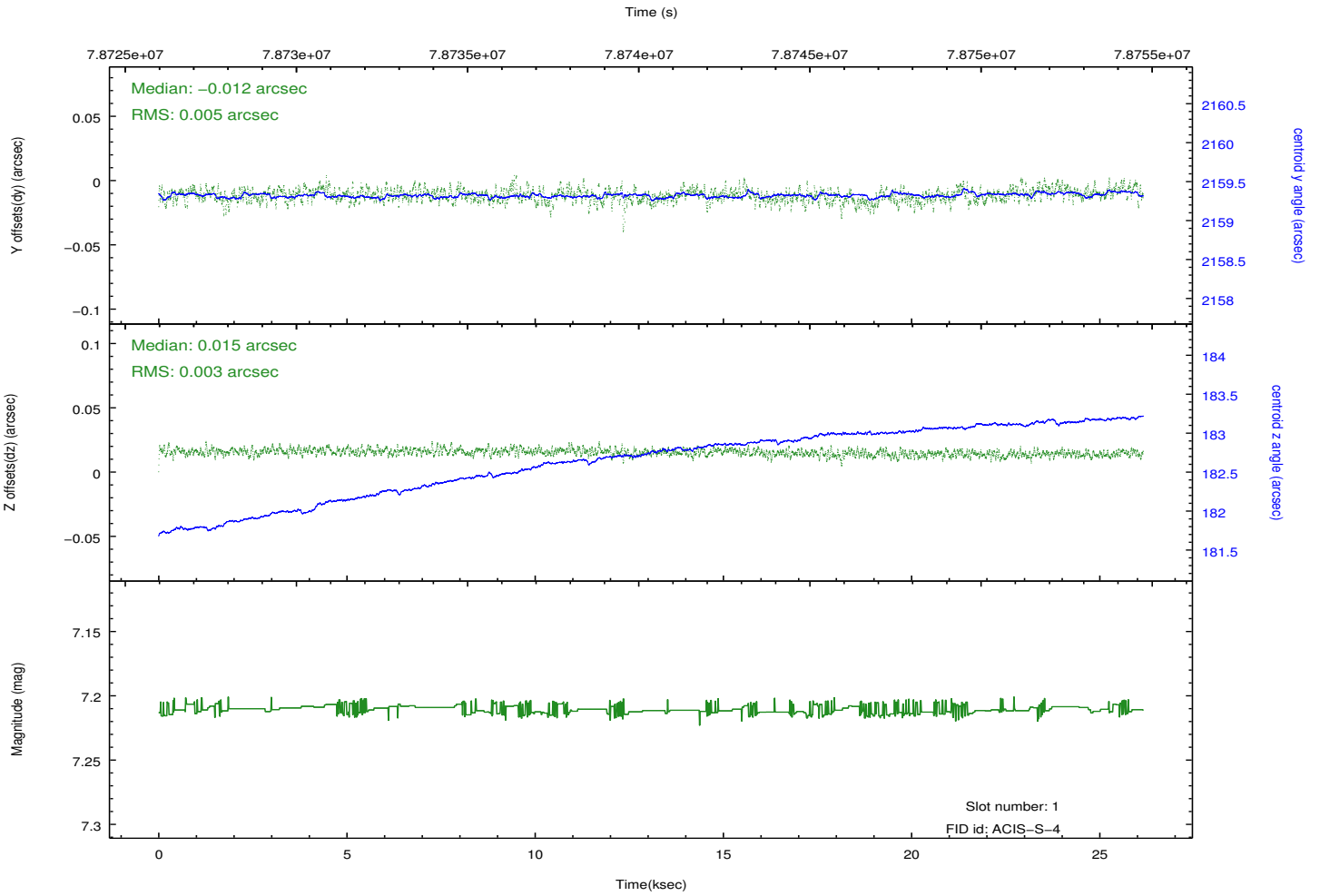
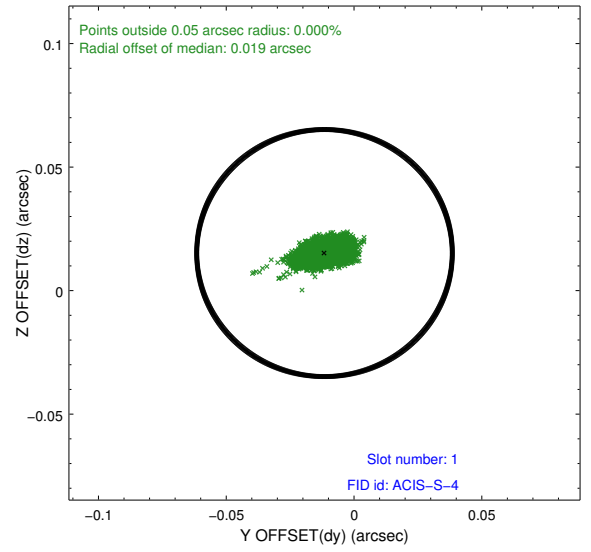
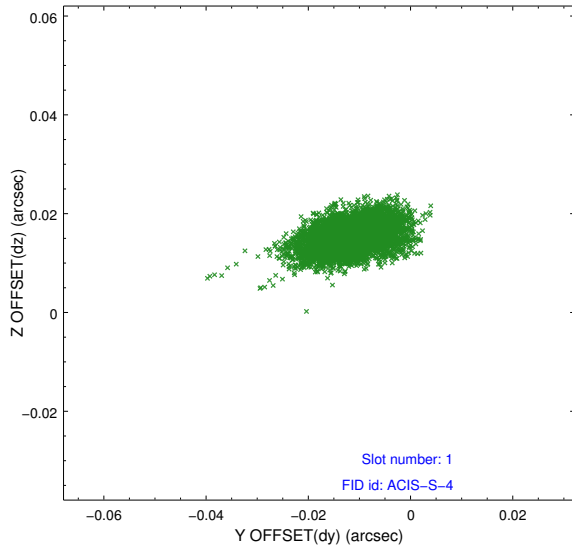


2.5 FID Slots

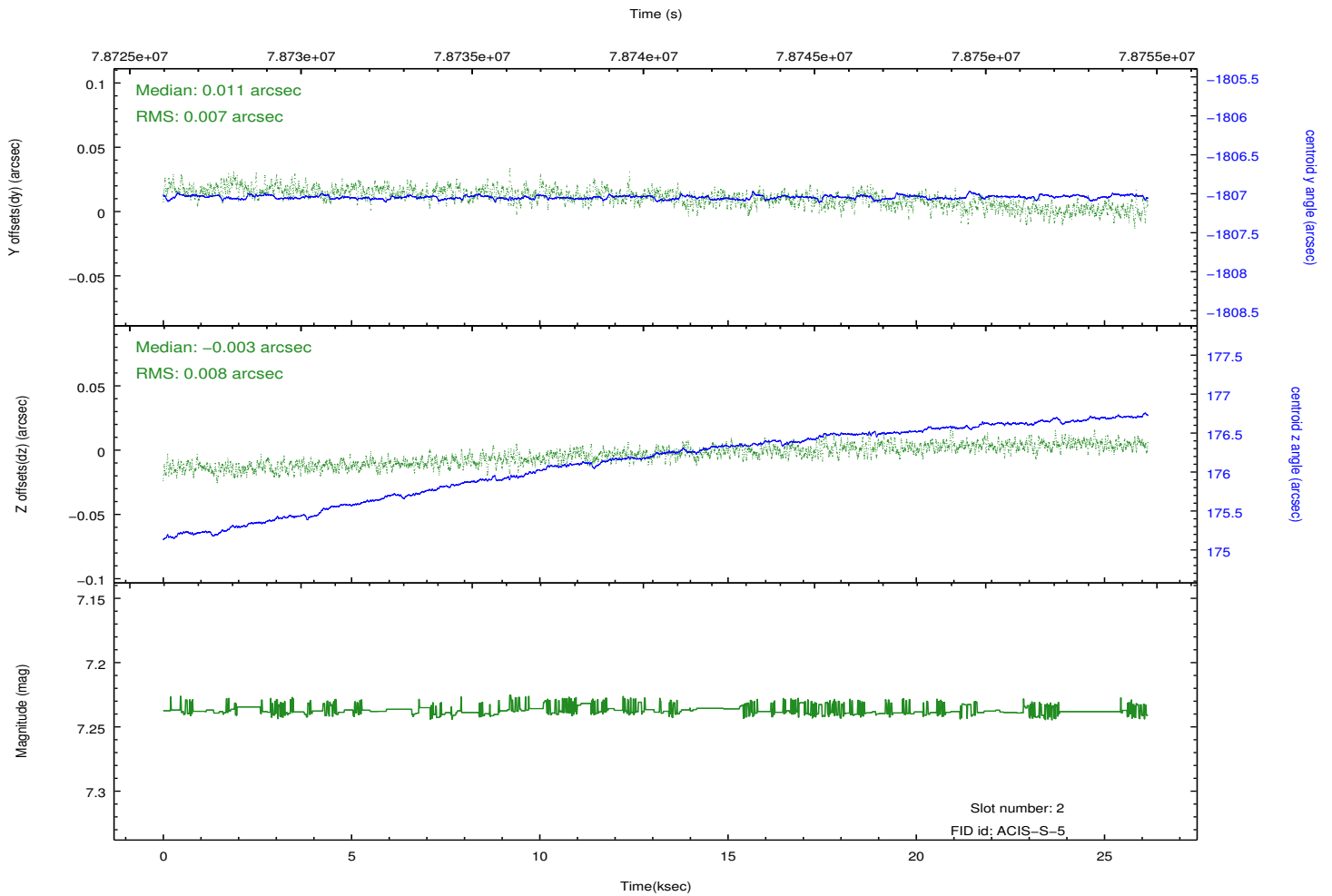
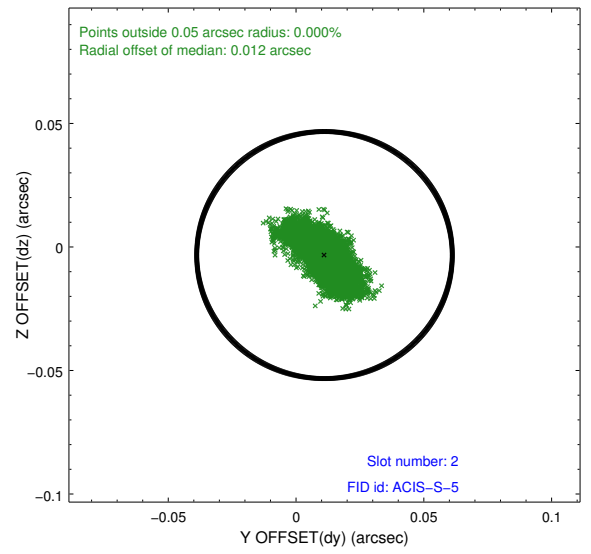
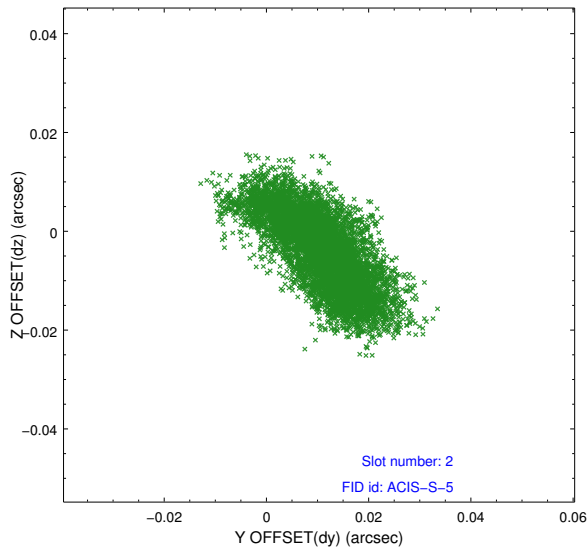
2.5.1 Slot 0



2.5.2 Slot 1



2.5.3 Slot 2



A Summary

A.1 Status

V&V Scientist	Jen Lauer
V&V Date (YYYY-MM-DD)	2012.09.04
V&V Edition	1
V&V Disposition and Status	OK
V&V Charge Time	26.147

A.2 Comments